

Anastomotic techniques for oesophagectomy for malignancy: systematic review and network meta analysis

Kamarajah, S. K.; Bundred, J. R.; Singh, P.; Pasquali, S.; Griffiths, E. A.

DOI:

[10.1002/bjs5.50298](https://doi.org/10.1002/bjs5.50298)

License:

Creative Commons: Attribution (CC BY)

Document Version

Publisher's PDF, also known as Version of record

Citation for published version (Harvard):

Kamarajah, SK, Bundred, JR, Singh, P, Pasquali, S & Griffiths, EA 2020, 'Anastomotic techniques for oesophagectomy for malignancy: systematic review and network metaanalysis', *BJS Open*, vol. 4, no. 4, pp. 563-576. <https://doi.org/10.1002/bjs5.50298>

[Link to publication on Research at Birmingham portal](#)

General rights

Unless a licence is specified above, all rights (including copyright and moral rights) in this document are retained by the authors and/or the copyright holders. The express permission of the copyright holder must be obtained for any use of this material other than for purposes permitted by law.

- Users may freely distribute the URL that is used to identify this publication.
- Users may download and/or print one copy of the publication from the University of Birmingham research portal for the purpose of private study or non-commercial research.
- User may use extracts from the document in line with the concept of 'fair dealing' under the Copyright, Designs and Patents Act 1988 (?)
- Users may not further distribute the material nor use it for the purposes of commercial gain.

Where a licence is displayed above, please note the terms and conditions of the licence govern your use of this document.

When citing, please reference the published version.

Take down policy

While the University of Birmingham exercises care and attention in making items available there are rare occasions when an item has been uploaded in error or has been deemed to be commercially or otherwise sensitive.

If you believe that this is the case for this document, please contact UBIRA@lists.bham.ac.uk providing details and we will remove access to the work immediately and investigate.

Anastomotic techniques for oesophagectomy for malignancy: systematic review and network meta-analysis

S. K. Kamarajah^{1,2}, J. R. Bundred^{3,5}, P. Singh^{5,6} , S. Pasquali⁷ and E. A. Griffiths^{4,5}

¹Department of Hepatobiliary, Pancreatic and Transplant Surgery, Freeman Hospital, Newcastle upon Tyne Hospitals NHS Foundation Trust, and ²Institute of Cellular Medicine, University of Newcastle, Newcastle upon Tyne, ³College of Medical and Dental Sciences and ⁴Institute of Cancer and Genomic Sciences, College of Medical and Dental Sciences, University of Birmingham, and ⁵Department of Upper Gastrointestinal Surgery, University Hospitals Birmingham NHS Foundation Trust, Birmingham, and ⁶Regional Oesophago-Gastric Unit, Royal Surrey NHS Foundation Trust, Guildford, UK, and ⁷Department of Surgery, Fondazione IRCCS Istituto Nazionale dei Tumori, Milan, Italy

Correspondence to: Mr E. A. Griffiths, Department of Upper Gastrointestinal Surgery, Area 6, Seventh Floor, Queen Elizabeth Hospital Birmingham, Mindelsohn Way, Birmingham B15 2WB, UK (e-mail: ewen.griffiths@uhb.nhs.uk)

Background: Current evidence on the benefits of different anastomotic techniques (hand-sewn (HS), circular stapled (CS), triangulating stapled (TS) or linear stapled/semimechanical (LSSM) techniques) after oesophagectomy is conflicting. The aim of this study was to evaluate the evidence for the techniques for oesophagogastric anastomosis and their impact on perioperative outcomes.

Methods: This was a systematic review and network meta-analysis. PubMed, EMBASE and Cochrane Library databases were searched systematically for randomized and non-randomized studies reporting techniques for the oesophagogastric anastomosis. Network meta-analysis of postoperative anastomotic leaks and strictures was performed.

Results: Of 4192 articles screened, 15 randomized and 22 non-randomized studies comprising 8618 patients were included. LSSM (odds ratio (OR) 0.50, 95 per cent c.i. 0.33 to 0.74; $P = 0.001$) and CS (OR 0.68, 0.48 to 0.95; $P = 0.027$) anastomoses were associated with lower anastomotic leak rates than HS anastomoses. LSSM anastomoses were associated with lower stricture rates than HS anastomoses (OR 0.32, 0.19 to 0.54; $P < 0.001$).

Conclusion: LSSM anastomoses after oesophagectomy are superior with regard to anastomotic leak and stricture rates.

Funding information

No funding

Paper accepted 14 April 2020

Published online in Wiley Online Library (www.bjsopen.com). DOI: 10.1002/bjs5.50298

Introduction

Despite improvements in perioperative care over recent decades, which have led to improved patient selection, reduced operative morbidity and mortality, and prolonged postoperative survival^{1,2}, anastomotic leak remains the most serious technical complication after oesophagectomy. Patients who experience anastomotic leakage suffer high morbidity, have a high postoperative mortality rate, ranging between 21 and 35 per cent, incur high hospital costs³⁻⁷. They also suffer long-term effects, such as an increased risk of anastomotic stricture and poorer long-term survival, compared with patients who recover uneventfully⁸. Many perioperative factors are thought to be responsible for anastomotic integrity after oesophagectomy, such as surgical approach,

tumour location (cervical or thoracic) and technique of oesophagogastric anastomosis⁹.

Several meta-analyses¹⁰⁻¹⁴ have compared stapled and hand-sewn anastomotic techniques. These studies have included both randomized and non-randomized trials, and have found no significant differences in anastomotic leak rates between the two anastomotic techniques. Most individual comparative studies, however, chose either to look at two types of stapled anastomosis or to group all stapled anastomoses together. There is a paucity of literature comparing all anastomotic techniques described in this study. Anastomotic techniques can include hand-sewn (HS), circular stapled (CS), linear stapled/semimechanical (LSSM)^{15,16} and triangulating stapled (TS)^{17,18}. There are encouraging reports of low anastomotic leak rates when

linear stapled techniques are employed¹⁹. The strength of performing a network meta-analysis is that it allows the evaluation of treatments that have not been compared directly (for example, comparison of B *versus* C, using data from studies comparing A *versus* B and A *versus* C). Network meta-analysis ranks multiple treatments based on their efficacy, and pools together direct and indirect evidence within mixed comparisons, improving the precision of estimates^{20,21}.

The aim of this systematic review was to evaluate current evidence and perform a network meta-analysis to identify techniques associated with superior perioperative outcomes in patients undergoing oesophagectomy for oesophageal cancer.

Methods

This was a systematic review and network meta-analysis. The study was registered with the PROSPERO database (Registration CRD42018106086) and reported according to the PRISMA guidelines²².

Search strategy

A systematic search of PubMed, EMBASE and Cochrane Library databases was conducted by two independent investigators on 22 April 2019, to include studies up to 31 March 2019. Search terms included 'oesophageal cancer' or 'esophageal cancer' or 'gastro-oesophageal cancer', and 'anastomosis' or 'hand-sewn' or 'linear stapler' or 'circular stapler' individually or in combination (*Table S1*, supporting information). The 'related articles' function was used to broaden the search, and all citations were considered for relevance. A manual search of reference lists in recent reviews was also undertaken. After excluding duplicates, two researchers independently reviewed the titles and abstracts of studies identified by the literature search. If a study was considered to be potentially relevant to the research question, the full publication was reviewed. Reference lists of all included studies were hand-searched to identify other potentially relevant studies. Any areas of disagreement between the two primary researchers were resolved through discussion with all authors.

Inclusion and exclusion criteria

Inclusion criteria included studies reporting the comparison of anastomotic technique (by any method) in patients with oesophageal cancer who underwent oesophagectomy, published in the English language. Exclusion criteria included conference abstracts, review articles, case reports

(fewer than 5 patients), and publications with mixed populations, in which the outcomes of patients with either benign disease or cancer at another site could not be separated from those of patients with oesophageal cancer.

Study outcomes

The primary outcome measures were anastomotic complications, including anastomotic leak or stricture²³. Secondary outcome measures were surgery-specific complications (pulmonary, cardiac) and death (30-day and in-hospital mortality).

Data extraction

One researcher extracted data on study characteristics (author, year of publication, country of origin, study design, patient number), patient demographics (age, sex), tumour stage (AJCC T category and AJCC stage), method and details of anastomotic technique, and reported clinical outcomes.

Definitions

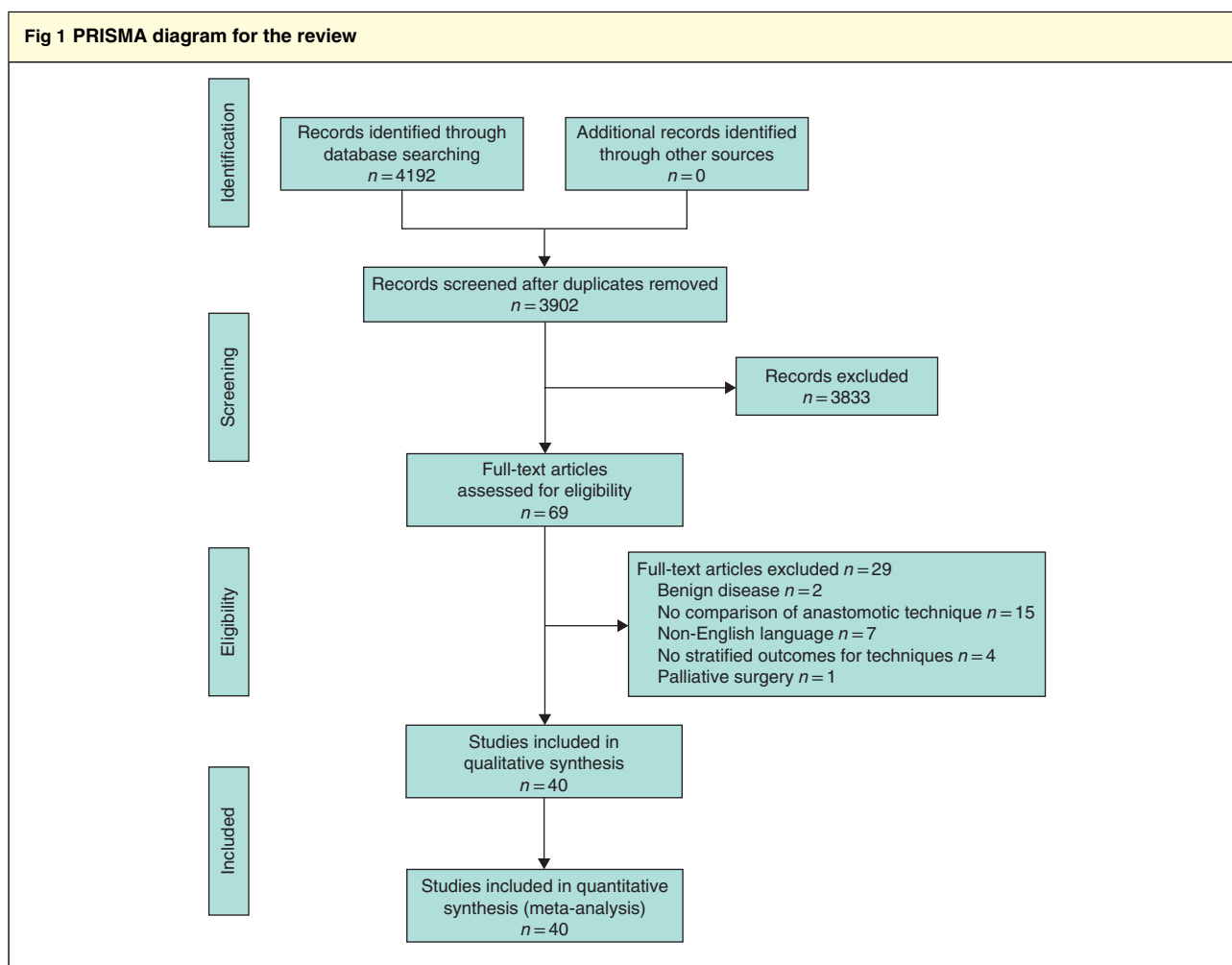
Oesophageal cancer was defined as a malignancy of any portion of the oesophagus. Anastomotic technique was defined as any method of oesophagogastric anastomosis including HS, CS, LSSM^{15,16} and TS^{17,18} anastomoses. These anastomotic techniques may be employed in either the thoracic or the cervical phase of the operation. Subtle variations of the LSSM technique were described. The nomenclature includes a (modified) Collard technique²⁴ and a side-to-side semimechanical technique, which both refer to a combination of a linear stapled and hand-sewn technique.

Assessment of methodological quality

Methodological quality and standard of outcome reporting within included studies were assessed by two independent researchers. Methodological quality was assessed formally using the Newcastle–Ottawa Scale (NOS)^{25,26} for cohort studies and the Cochrane risk-of-bias tool for RCTs.

Statistical analysis

Dichotomous outcomes were compared between anastomotic formation techniques using odds ratios (ORs), produced using random-effects DerSimonian–Laird meta-analytical models. Both randomized and non-randomized studies were pooled into a network meta-analysis comparing the above anastomotic formation



techniques. Sensitivity analyses were performed for type of study (RCTs only, RCTs and prospective cohort studies (PCSs) and all RCT and cohort studies with a NOS score of 8 or above), study year (2005–2018), and level of anastomosis (cervical *versus* thoracic). For each outcome, graphical representations of treatments (nodes) and comparisons (lines) were mapped. Network maps were then analysed for closed loops to be entered into network analyses.

Networks were then examined for the presence of inconsistency, allowing for comparisons between direct and indirect treatment effects. Initially, this was assessed by checking for overall inconsistency throughout the entire network. A further check was then performed by fitting node side-splitting models, to identify loop inconsistency, within all three-way treatment comparison loops, as described by Dias and colleagues²⁷. When *P* values were greater than 0.050, representing acceptance of the null hypothesis, consistency was assumed and networks

were entered into consistency modelling. Consistency modelling utilized a restricted maximum likelihood model, generating network forest plots. Heterogeneity was examined by calculating the value of τ^2 . Hand-sewn anastomosis was used as the common reference treatment for all comparisons. These were supplemented with interval plots of pooled effect estimates.

Anastomotic techniques were then ranked using the *P*-score provided by the *netmeta* package (RStudio® 3.2.1, Boston, Massachusetts, USA; <https://CRAN.R-project.org/package=netmeta>). The surface under the cumulative ranking areas for all outcomes assessed the probability of the superiority of each treatment^{28–30}. The probability of ranking of a treatment (that a treatment ranks as the best treatment, second best treatment, third best treatment) for each outcome of interest was calculated. A probability of ranking below 90 per cent was not considered to be high enough to be confidently reported as the correct

Table 1 Characteristics of included studies

Reference	Study design	Intervention	No. of patients	% of men	Mean age (years)	Neoadjuvant therapy (%)	Tumour location	Pathology
Perrachia <i>et al.</i> ³²	PCS	CS versus HS	214 versus 28	86	60	n.r.	n.r.	Mixed
Rostas <i>et al.</i> ³³	PCS	CS versus HS	60 versus 82	82	n.r.	48	Upper 1, middle 24, lower 117	AC 110, SCC 31, other 1
McManus <i>et al.</i> ³⁴	RCS	CS versus HS	99 versus 122	n.r.	n.r.	n.r.	n.r.	n.r.
Lee <i>et al.</i> ³⁵	RCS	CS versus HS	141 versus 211	85	63	n.r.	n.r.	SCC
Honkoop <i>et al.</i> ³⁶	RCS	CS versus HS	154 versus 114	75	61	n.r.	Any	AC 161, SCC 92
Klink <i>et al.</i> ³⁷	RCS	CS versus HS	36 versus 36	89	62	51	n.r.	AC, SCC
West of Scotland and Highland Anastomosis Study Group ³⁸	RCT	CS versus HS	27 versus 25	n.r.	64	n.r.	n.r.	n.r.
Craig <i>et al.</i> ³⁹	RCT	CS versus HS	50 versus 50	61	65	n.r.	Lower 100	AC, SCC
Valverde <i>et al.</i> ⁴⁰	RCT	CS versus HS	78 versus 74	91	50	n.r.	Middle 81, lower 71	AC, SCC
Law <i>et al.</i> ⁴¹	RCT	CS versus HS	61 versus 61	88	64	n.r.	Middle 99, lower 21, double 2	SCC
Hsu <i>et al.</i> ⁴²	RCT	CS versus HS	31 versus 32	90	62	52	Upper 16, middle 26, lower 21	SCC
Okuyama <i>et al.</i> ⁴³	RCT	CS versus HS	14 versus 18	91	64	0	Middle 23, lower 9	SCC 30, undifferentiated 2
Luechakietisak <i>et al.</i> ⁴⁴	RCT	CS versus HS	58 versus 59	84	63	n.r.	Middle 57, lower 60	SCC
Zhang <i>et al.</i> ⁴⁵	RCT	CS versus HS	272 versus 244	58	60	0	n.r.	n.r.
Cayi <i>et al.</i> ⁴⁶	RCT	CS versus HS	102 versus 125	75	58	0	Upper/middle	n.r.
Liu <i>et al.</i> ⁴⁷	RCT	CS versus HS	241 versus 237	75	62	13	Upper 82, middle 283, lower 113	n.r.
Zhu <i>et al.</i> ⁴⁸	RCS	CS versus HS versus LHS	170 versus 69 versus 1024	80	64	NR	n.r.	Mixed
Xu <i>et al.</i> ⁴⁹	PCS	CS versus LSSM versus HS	68 versus 166 versus 59	86	60	0	Upper 5, middle 198, lower 19	AC, SCC
Blackmon <i>et al.</i> ⁵⁰	RCS	CS versus LSSM versus HS	147 versus 44 versus 23	n.r.	n.r.	n.r.	n.r.	AC, SCC
Liu <i>et al.</i> ⁵¹	RCS	CS versus LSSM versus HS	233 versus 147 versus 78	81	63	52	Lower/GOJ	AC 345, SCC 105
Wang <i>et al.</i> ¹⁵	RCT	CS versus LSSM versus HS	47 versus 45 versus 52	56	60	0	Middle 81, lower 18	AC 12, SCC 131, undifferentiated 1
Price <i>et al.</i> ⁵²	PCS	CS versus LSSM versus HS versus MC*	48 versus 260 versus 57	83	64	57	n.r.	AC, SCC
Li <i>et al.</i> ¹⁷	RCS	CS versus TS	51 versus 33	81	61	10	Upper 9, middle 57, lower 18	AC, SCC
Hayata <i>et al.</i> ¹⁸	RCT	CS versus TS	49 versus 51	77	67	57	Upper 6, middle 60, lower 34	AC, SCC
Furukawa <i>et al.</i> ⁵³	PCS	CS versus TS versus HS	8 versus 11 versus 12	n.r.	n.r.	n.r.	n.r.	n.r.
Wang <i>et al.</i> ⁵⁴	RCS	CS versus TS versus HS	164 versus 34 versus 192	56	NR	7	Upper 84, middle 215, lower 91	n.r.
Zieren <i>et al.</i> ⁵⁵	RCT	OLHS versus DLHS	107†	79	58	34	n.r.	SCC
Casson <i>et al.</i> ⁵⁶	RCS	LSSM versus HS	38 versus 53	80	63	n.r.	n.r.	AC
Behzadi <i>et al.</i> ⁵⁷	RCS	LSSM versus HS	75 versus 205	84	65	n.r.	n.r.	n.r.
Ercan <i>et al.</i> ⁵⁸	RCS	LSSM versus HS	85 versus 85	90	NR	41	Upper 5, middle 4, lower 161	AC, SCC
Kondra <i>et al.</i> ⁵⁹	RCS	LSSM versus HS	79 versus 89	85	64	24	Middle 15, lower 68, GOJ 85	AC, SCC

Table 1 Continued

Reference	Study design	Intervention	No. of patients	% of men	Mean age (years)	Neoadjuvant therapy (%)	Tumour location	Pathology
Harustiak <i>et al.</i> ⁶⁰	RCS	LSSM versus HS	281 versus 134	88	60	56	n.r.	AC, SCC
Mishra <i>et al.</i> ⁶¹	RCS	LSSM versus HS	74 versus 66	56	53	0	Upper 2, middle 61, lower 62, GOJ 15	AC, SCC
Sugimura <i>et al.</i> ⁶²	RCS	LSSM versus HS	225 versus 173	80	n.r.	74	Upper 41, middle 229, lower 128	AC 13, SCC 381
Laterza <i>et al.</i> ⁶³	RCT	LSSM versus HS	20 versus 21	17	51	n.r.	Upper 10, middle 24, lower 5	AC, SCC
Walther <i>et al.</i> ⁶⁴	RCT	LSSM versus HS	42 versus 41	69	67	0	Upper 4, middle 29, lower 40	AC, SCC
Saluja <i>et al.</i> ¹⁶	RCT	LSSM versus HS	87 versus 87	66	51	61	Middle 84, lower 80, unknown 10	AC, SCC
Singh <i>et al.</i> ⁶⁵	RCS	LSSM versus TS versus HS	16 versus 43 versus 34	n.r.	n.r.	n.r.	n.r.	Mixed
Sokouti <i>et al.</i> ⁶⁶	RCS	TLHS versus OLHS	228†	59	60	n.r.	Upper 13, middle 100, lower 97	Mixed
Sun <i>et al.</i> ⁶⁷	RCS	TLHS versus DLHS	339†	61	61	n.r.	Upper 98, middle 114, lower 127	Mixed

*Combined longitudinal and transverse anastomosis. †Comparison of two hand-sewn anastomosis techniques. PCS, prospective cohort study; CS, circular stapled; HS, hand-sewn; n.r., not reported; AC, adenocarcinoma; SCC, squamous cell carcinoma; RCS, retrospective cohort study; LHS, layered hand-sewn; LSSM, linear stapled/semimechanical; GOJ, gastro-oesophageal junction; MC, modified Collard; TS, triangulating stapled; OLHS, one layer hand-sewn; DLHS, double layer hand-sewn; TLHS, triple layer hand-sewn.

ranking position of a surgical technique for that outcome of interest^{27,31}. Statistical significance was considered when $P < 0.050$. Statistical analyses were performed using R Foundation statistical software (RStudio® 3.2.1).

Results

Of 4192 studies screened, 40 studies comparing different anastomotic techniques were eligible (*Fig. 1*). Details of these studies^{15–18,32–67} are shown in *Table 1*. The majority of included studies reported on open oesophagectomy. Three studies^{55,66,67} compared different types of hand-sewn layers and were therefore excluded from meta-analysis. The remaining 37 studies comprised 8571 patients. Fifteen RCTs, five non-randomized prospective and 17 retrospective studies were included. Within the non-randomized studies, the mean NOS score was 7 (range 5–9) (*Table 2*). In RCTs, reporting of the blinding of participants and outcomes was unclear, but the risk of bias was mainly low for other domains.

The anastomotic techniques analysed most commonly were HS (35 studies) and CS (26), with these two techniques being directly compared in 24 studies. LSSM was analysed in 16 studies, of which ten included comparisons with HS, and a further five studies reported comparisons with both HS and CS. In addition, five studies analysed TS anastomoses. One study⁵² described a linear stapled

technique without the use of a hand-sewn component. A summary of technical details of anastomosis is presented in *Table S2* (supporting information).

Network meta-analysis

Network meta-analyses for the two primary outcomes, anastomotic leak and stricture, were conducted comparing all anastomotic techniques described in two or more studies including HS, TS, LSSM and CS. Initially, visual representations of the network of studies used for each outcome were generated (*Figs 2a* and *3a*). For anastomotic leak, 36 studies were included, consisting of 2623 patients with a CS anastomosis, 1876 with a LSSM anastomosis, 3922 receiving a HS anastomosis, and 197 who had a TS anastomosis. For anastomotic stricture formation, 27 studies were included, comprising 1775 patients with a CS anastomosis, 1602 with a LSSM anastomosis, 3224 with a HS anastomosis, and 197 receiving a TS anastomosis.

Anastomotic leak

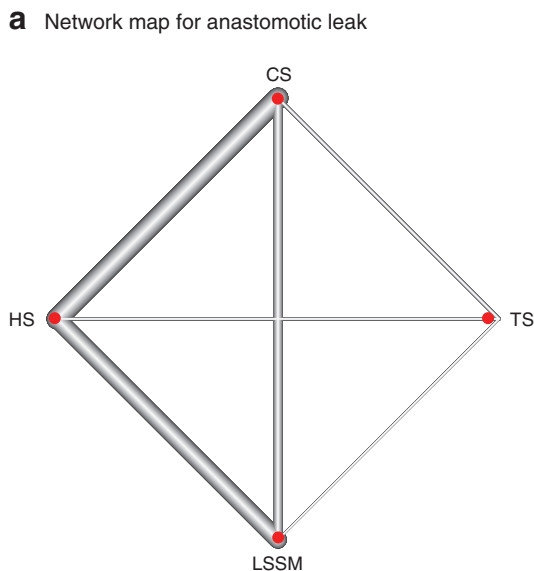
After overall inconsistency testing ($P = 0.958$) and fitting of node side-splitting models (P values: 0.565, 0.972, 0.916, 0.715, 0.743, 0.617), overall and local consistency was assumed. Upon generation of network forest and interval plots (*Fig. 2b* and *Table 3*), CS (OR 0.68; $P = 0.027$)

Table 2 Assessment of risk of bias in RCTs and cohort studies

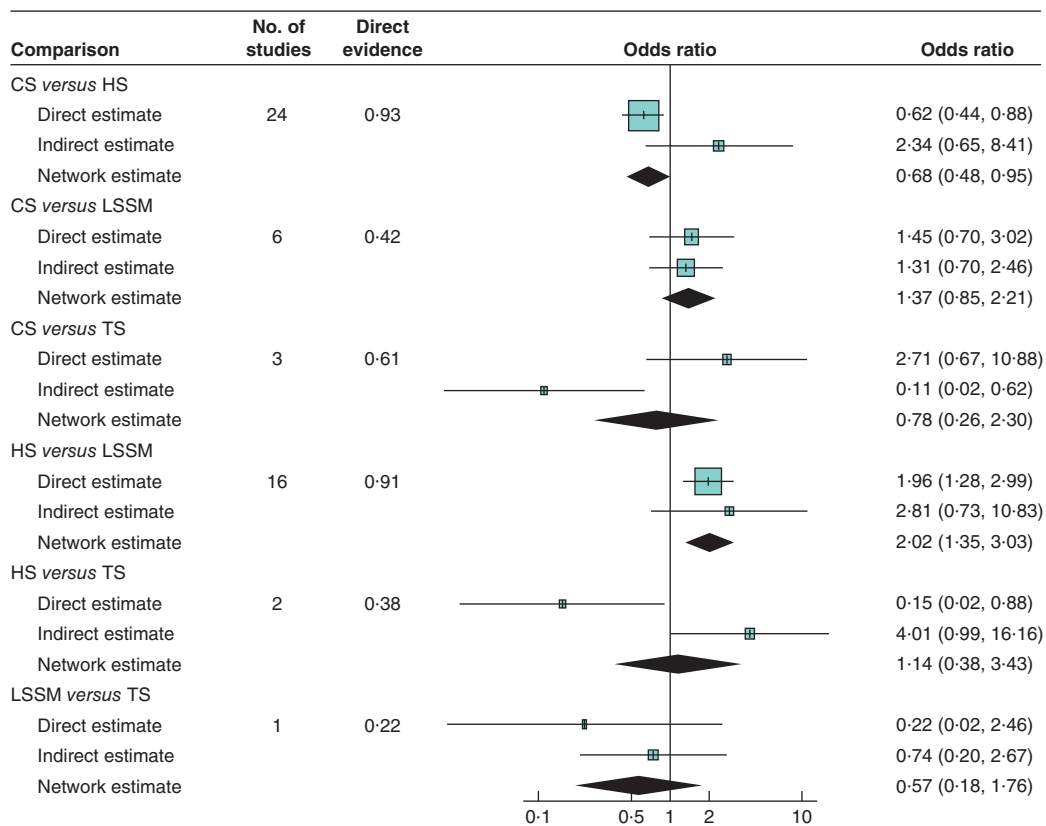
Reference	Study design	Adequate sequence generation	Allocation concealment	Blinding of participants	Blinding of outcomes	Incomplete outcome data	Selective outcome reporting	Free from other bias	NOS score
RCTs									
West of Scotland and Highland Anastomosis Study Group ³⁸	RCT	Low	Low	Unclear	Unclear	Unclear	Low	Low	–
Craig <i>et al.</i> ³⁹	RCT	High	High	Unclear	Unclear	Unclear	Low	Low	–
Valverde <i>et al.</i> ⁴⁰	RCT	Low	Unclear	Unclear	Unclear	Unclear	Low	Low	–
Law <i>et al.</i> ⁴¹	RCT	Low	Low	Unclear	Unclear	Low	Low	Low	–
Hsu <i>et al.</i> ⁴²	RCT	High	High	Unclear	Unclear	Low	Low	Low	–
Okuyama <i>et al.</i> ⁴³	RCT	Low	Unclear	Unclear	Unclear	Unclear	Low	High	–
Luechakietisak <i>et al.</i> ⁴⁴	RCT	High	High	Unclear	Unclear	Low	Low	Low	–
Zhang <i>et al.</i> ⁴⁵	RCT	High	High	Unclear	Unclear	Unclear	Low	Low	–
Cayi <i>et al.</i> ⁴⁶	RCT	Uncertain	Unclear	Unclear	Unclear	Unclear	Low	High	–
Liu <i>et al.</i> ⁴⁷	RCT	Low	Low	Unclear	Low	Unclear	Low	Low	–
Wang <i>et al.</i> ¹⁵	RCT	High	High	Unclear	Unclear	Low	Low	Low	–
Hayata <i>et al.</i> ¹⁸	RCT	Uncertain	Low	Unclear	Unclear	Low	Low	High	–
Zieren <i>et al.</i> ⁵⁵	RCT	Low	Low	Unclear	Unclear	Unclear	Unclear	Low	–
Laterza <i>et al.</i> ⁶³	RCT	Low	Unclear	Unclear	Unclear	Low	Low	Low	–
Walther <i>et al.</i> ⁶⁴	RCT	Low	Unclear	Unclear	Unclear	Low	Low	High	–
Saluja <i>et al.</i> ¹⁶	RCT	Low	Unclear	Unclear	Unclear	Low	Low	Low	–
Cohort studies									
Perrachia <i>et al.</i> ³²	PCS	–	–	–	–	–	–	–	7
Rostas <i>et al.</i> ³³	PCS	–	–	–	–	–	–	–	7
McManus <i>et al.</i> ³⁴	RCS	–	–	–	–	–	–	–	6
Lee <i>et al.</i> ³⁵	RCS	–	–	–	–	–	–	–	6
Honkoop <i>et al.</i> ³⁶	RCS	–	–	–	–	–	–	–	9
Klink <i>et al.</i> ³⁷	RCS	–	–	–	–	–	–	–	7
Zhu <i>et al.</i> ⁴⁸	RCS	–	–	–	–	–	–	–	6
Xu <i>et al.</i> ⁴⁹	PCS	–	–	–	–	–	–	–	9
Blackmon <i>et al.</i> ⁵⁰	RCS	–	–	–	–	–	–	–	7
Liu <i>et al.</i> ⁵¹	RCS	–	–	–	–	–	–	–	7
Price <i>et al.</i> ⁵²	PCS	–	–	–	–	–	–	–	8
Li <i>et al.</i> ¹⁷	RCS	–	–	–	–	–	–	–	6
Furukawa <i>et al.</i> ⁵³	PCS	–	–	–	–	–	–	–	8
Wang <i>et al.</i> ⁵⁴	RCS	–	–	–	–	–	–	–	7
Casson <i>et al.</i> ⁵⁶	RCS	–	–	–	–	–	–	–	7
Behzadi <i>et al.</i> ⁵⁷	RCS	–	–	–	–	–	–	–	6
Ercan <i>et al.</i> ⁵⁸	RCS	–	–	–	–	–	–	–	n.a.
Kondra <i>et al.</i> ⁵⁹	RCS	–	–	–	–	–	–	–	8
Harustiak <i>et al.</i> ⁶⁰	RCS	–	–	–	–	–	–	–	9
Mishra <i>et al.</i> ⁶¹	RCS	–	–	–	–	–	–	–	8
Sugimura <i>et al.</i> ⁶²	RCS	–	–	–	–	–	–	–	8
Singh <i>et al.</i> ⁶⁵	RCS	–	–	–	–	–	–	–	5
Sokouti <i>et al.</i> ⁶⁶	RCS	–	–	–	–	–	–	–	7
Sun <i>et al.</i> ⁶⁷	RCS	–	–	–	–	–	–	–	7

Level of bias was determined as: low, indicating a low risk of bias; unclear, indicating an uncertain risk of bias, and high, indicating a high risk of bias. NOS, Newcastle–Ottawa Scale; PCS, prospective cohort study; RCS, retrospective cohort study; n.a., not applicable.

Fig 2 Network map and forest plot for anastomotic leak



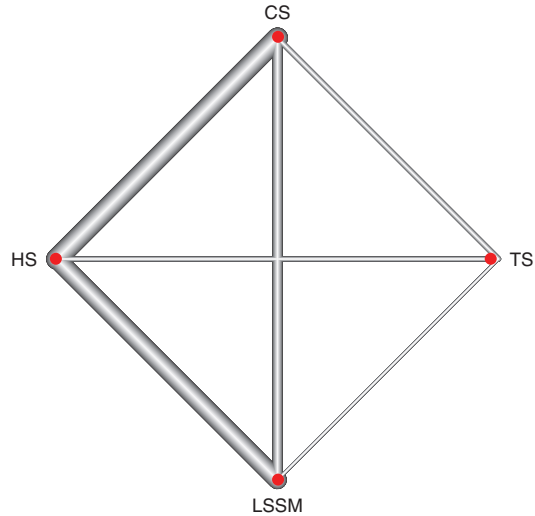
b Forest plot for anastomotic leak



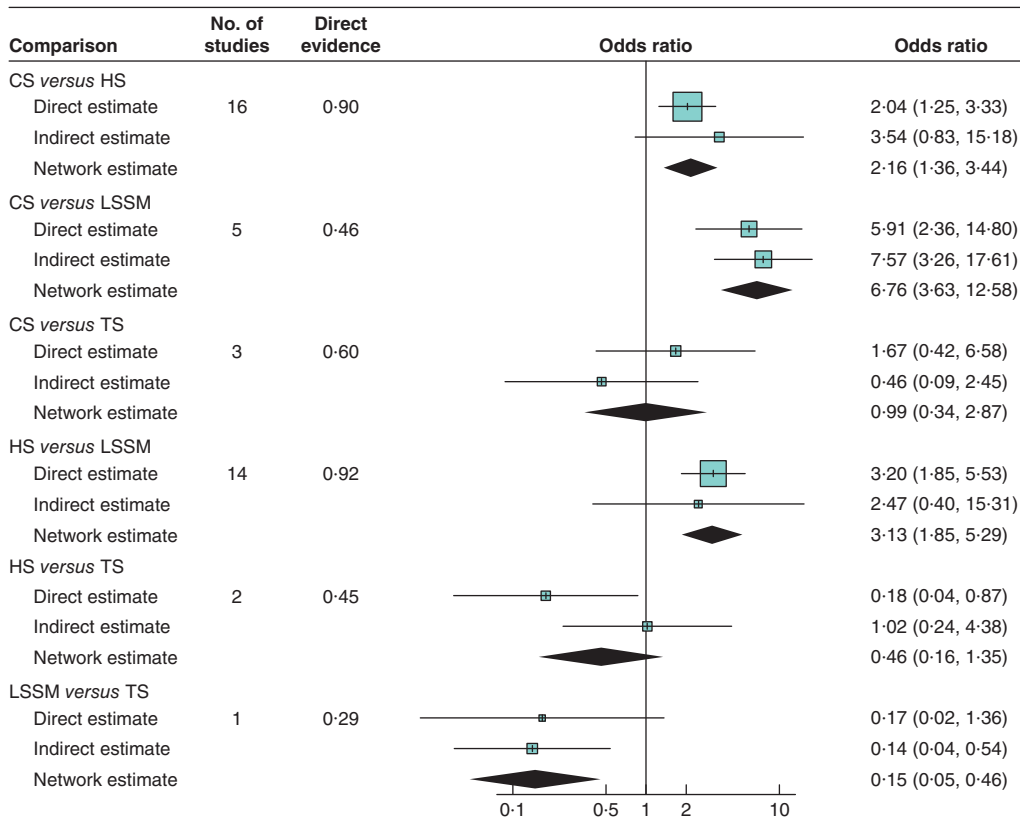
a Network map. **b** Forest plot. A DerSimonian–Laird random-effects model was used for meta-analysis. Odds ratios are shown with 95 per cent confidence intervals. CS, circular stapled; HS, hand-sewn; TS, triangulating stapled; LSSM, linear stapled/semimechanical.

Fig 3 Network map and forest plot for anastomotic stricture

a Network map for anastomotic stricture



b Forest plot for anastomotic stricture



a Network map. **b** Forest plot. A DerSimonian–Laird random-effects model was used for meta-analysis. Odds ratios are shown with 95 per cent confidence intervals. CS, circular stapled; HS, hand-sewn; TS, triangulating stapled; LSSM, linear stapled/semimechanical.

and LSSM (OR 0.50; $P=0.001$) anastomoses were associated with lower anastomotic leak rates than HS anastomosis. Anastomotic leak rates were no different for CS and LSSM anastomoses (OR 1.37; $P=0.198$). There were no significant differences in leak rates between TS and HS. Overall, LSSM was ranked the best technique regarding anastomotic leakage with high probability, followed by CS and TS (Table S3, supporting information).

Sensitivity analysis of anastomotic leak

For cervical anastomosis, no technique was superior with regard to anastomotic leakage (Table 3). For thoracic anastomosis, LSSM (OR 0.42) and CS (OR 0.56) anastomoses were superior to HS with regard to anastomotic leakage. There were no differences in anastomotic leaks between CS and LSSM (OR 1.33). In the analyses split by study type, only LSSM anastomoses (OR 0.56) had a lower anastomotic leak rate than HS in the 'RCT and cohort studies with a NOS score of 8 or above' subgroup only. In the subgroup analysis of RCTs there were no statistically significant differences. For studies published in 2005–2018, only LSSM (OR 0.50) was superior to HS anastomosis.

Anastomotic stricture

After overall inconsistency testing ($P=0.425$) and fitting of node side-splitting models (P values: 0.995, 0.124, 0.516, 0.413, 0.782), overall and local consistency was assumed. Upon generation of network forest and interval plots (Fig. 3b and Table 3), LSSM anastomosis was found to be superior to CS (OR 0.15; $P<0.001$), HS (OR 0.32; $P<0.001$) and TS (OR 0.15; $P=0.001$) anastomoses respectively. CS was inferior to HS (OR 2.16; $P=0.001$). LSSM was ranked the best technique with high probability followed by HS, TS and CS anastomoses respectively.

Sensitivity analysis in anastomotic stricture

For cervical anastomosis, LSSM had lower rates of anastomotic stricture than CS (OR 0.10; $P<0.001$), HS (OR 0.30; $P=0.002$) and TS (OR 0.12; $P=0.004$) anastomoses (Table 3). CS had higher rates of anastomotic stricture than HS (OR 2.86; $P=0.029$). For thoracic anastomosis, LSSM had lower rates of anastomotic stricture than CS anastomosis (OR 0.14; $P=0.010$). There were no significant differences in anastomotic stricture between CS and HS.

By study type, no significant differences were noted in the RCT-only sensitivity analysis. LSSM was superior to

TS, CS and HS for anastomotic strictures in the 'RCT and cohort studies with a NOS score of 8 or above' subgroup only. CS had significantly higher rates of stricture than LSSM and HS. For studies published in 2005–2018, LSSM was superior to CS (OR 0.15; $P<0.001$), HS (OR 0.26; $P<0.001$) and TS (OR 0.21; $P=0.036$) anastomoses (Table 3).

Intraoperative outcomes

Duration of surgery was reported in 16 studies. There were no differences in operating times between techniques (Table S4, supporting information). LSSM was ranked first for the entire cohort and for cervical anastomosis only. Blood loss was reported in 11 studies. LSSM had significantly lower blood loss than HS (mean difference 24 ml; $P=0.024$). LSSM was ranked first for the entire cohort and for cervical anastomosis only. There were insufficient studies in the thoracic anastomosis subgroup only for analysis.

Other postoperative complications

Cardiac complications rates were reported in ten studies (CS *versus* HS, 7 studies; LSSM *versus* HS, 2; CS *versus* TS, 1) (Table S4, supporting information). There were no significant differences in cardiac complications between the different techniques. LSSM was ranked first for the overall and cervical anastomosis only subgroup. There were not enough studies in the thoracic anastomosis only subgroup for analysis.

Pulmonary complications were reported in 12 studies (CS *versus* HS, 8 studies; LSSM *versus* HS, 2; CS *versus* TS, 2). There were no significant differences in pulmonary complications between the different techniques. TS was ranked first in the overall group. LSSM was ranked first in the cervical anastomosis only subgroup. There were not enough studies in the thoracic anastomosis only subgroup for analysis.

Thirty-day mortality was reported in 11 studies (CS *versus* HS, 7 studies; LSSM *versus* HS, 3; CS *versus* TS, 1). LSSM was associated with lower rates of 30-day mortality than HS (OR 0.33; $P=0.016$) and CS (OR 0.18; $P=0.002$) anastomoses. CS was not associated with higher mortality rates than HS anastomosis. LSSM was ranked the best technique with high probability, followed by TS. For cervical anastomosis, LSSM was ranked first. There were not enough studies in the thoracic anastomosis only subgroup for analysis.

In-hospital mortality was reported in several pairwise comparisons: CS *versus* HS, 16 studies; LSSM *versus* HS, five; CS *versus* TS, three; LSSM *versus* HS, four studies. LSSM was associated with lower rates of in-hospital

Table 3 Results of network meta-analysis of all techniques for anastomotic leak and benign anastomotic stricture formation, for overall studies and subgroup analyses

	Anastomotic leak			Anastomotic stricture		
	No. of studies	Odds ratio	P	No. of studies	Odds ratio	P
All studies						
CS versus HS	24	0.68 (0.48, 0.95)	0.027	16	2.16 (1.36, 3.44)	0.001
LSSM versus CS	6	0.73 (0.45, 1.18)	0.198	5	0.15 (0.08, 0.28)	< 0.001
CS versus TS	3	0.78 (0.26, 2.30)	0.668	3	0.99 (0.34, 2.87)	0.987
LSSM versus HS	16	0.50 (0.33, 0.74)	0.001	14	0.32 (0.19, 0.54)	< 0.001
HS versus TS	2	1.14 (0.38, 3.43)	0.827	2	0.46 (0.16, 1.35)	0.154
LSSM versus TS	1	0.57 (0.18, 1.76)	0.339	1	0.15 (0.05, 0.46)	0.001
Level of anastomosis						
Cervical						
CS versus HS	6	1.04 (0.49, 2.20)	0.925	4	2.86 (1.11, 7.37)	0.029
LSSM versus CS	1	0.50 (0.19, 1.30)	0.153	1	0.10 (0.03, 0.32)	< 0.001
CS versus TS	2	1.18 (0.29, 4.83)	0.829	2	1.19 (0.31, 4.60)	0.812
LSSM versus HS	8	0.52 (0.26, 1.02)	0.058	8	0.30 (0.13, 0.65)	0.002
HS versus TS	1	1.13 (0.27, 4.78)	0.877	1	0.42 (0.10, 1.66)	0.228
LSSM versus TS	1	0.59 (0.13, 2.64)	0.502	1	0.12 (0.03, 0.53)	0.004
Thoracic						
CS versus HS	7	0.56 (0.38, 0.83)	0.004	6	1.95 (0.66, 5.78)	0.23
LSSM versus CS	3	0.75 (0.42, 1.37)	0.353	3	0.14 (0.03, 0.63)	0.01
CS versus TS	1	0.44 (0.07, 2.73)	0.386	1	0.97 (0.06, 15.85)	0.985
LSSM versus HS	4	0.42 (0.26, 0.69)	0.001	4	0.28 (0.07, 1.12)	0.072
HS versus TS	1	0.78 (0.12, 4.93)	0.805	1	0.50 (0.03, 8.42)	0.643
LSSM versus TS	0	0.33 (0.05, 2.21)	0.254	0	0.14 (0.01, 2.99)	0.177
Study type						
RCT only						
CS versus HS	11	0.72 (0.42, 1.24)	0.237	7	1.92 (0.99, 3.72)	0.053
LSSM versus CS	1	1.52 (0.49, 4.76)	0.484	1	0.20 (0.04, 1.02)	0.053
CS versus TS	1	5.68 (0.52, 61.94)	0.155	1	0.91 (0.16, 5.04)	0.922
LSSM versus HS	4	1.09 (0.40, 2.94)	0.880	3	0.39 (0.09, 1.75)	0.224
HS versus TS	0	7.92 (0.68, 91.83)	0.098	0	0.47 (0.08, 2.97)	0.421
LSSM versus TS	0	8.59 (0.61, 120.59)	0.111	0	0.19 (0.02, 1.95)	0.156
RCT + cohort studies (NOS score ≥ 8)						
CS versus HS	15	0.68 (0.46, 1.01)	0.054	11	1.91 (1.18, 3.10)	0.009
LSSM versus CS	3	0.81 (0.48, 1.39)	0.453	3	0.14 (0.07, 0.28)	< 0.001
CS versus TS	2	1.31 (0.30, 5.70)	0.732	2	0.95 (0.26, 3.42)	0.943
LSSM versus HS	10	0.56 (0.38, 0.82)	0.003	9	0.28 (0.16, 0.48)	< 0.001
HS versus TS	1	1.92 (0.43, 8.60)	0.400	1	0.50 (0.13, 1.91)	0.317
LSSM versus TS	0	1.07 (0.23, 4.99)	0.937	0	0.14 (0.03, 0.57)	0.009
Study year (2005–2018)						
CS versus HS	15	0.70 (0.45, 1.10)	0.118	12	1.77 (1.01, 3.11)	0.046
LSSM versus CS	6	0.70 (0.41, 1.20)	0.197	5	0.15 (0.07, 0.30)	< 0.001
CS versus TS	3	1.86 (0.49, 7.02)	0.367	3	1.41 (0.36, 5.46)	0.633
LSSM versus HS	12	0.50 (0.32, 0.76)	0.002	11	0.26 (0.14, 0.47)	< 0.001
HS versus TS	1	2.65 (0.67, 10.47)	0.165	1	0.80 (0.19, 3.35)	0.773
LSSM versus TS	0	1.31 (0.32, 5.38)	0.721	0	0.21 (0.05, 0.93)	0.036

Values in parentheses are percentages. CS, circular stapled; HS, hand-sewn; LSSM, linear stapled/semimechanical; TS, triangulating stapled; NOS, Newcastle–Ottawa Scale.

mortality than HS (OR 0.32; $P < 0.001$), CS (OR 0.15; $P < 0.001$) and TS (OR 0.15; $P = 0.001$) anastomoses. CS was associated with higher in-hospital mortality rates than HS anastomosis. LSSM was ranked the best technique with high probability, followed by HS. For cervical anastomosis, HS was ranked first. There were not enough studies in the thoracic anastomosis only subgroup for analysis.

Discussion

This study demonstrates that stapled anastomoses, specifically using an LSSM technique, are associated with lower anastomotic leak rates than HS anastomoses following oesophagectomy. The LSSM technique was associated with a lower rate of anastomotic stricture than CS, TS and HS anastomoses. This effect was consistent across the majority of subgroups in sensitivity analyses. LSSM anastomoses were associated with lower rates of 30-day mortality. Overall, the results indicate superiority of the LSSM technique for oesophagogastric anastomosis following oesophagectomy.

Previous systematic reviews and meta-analyses^{10–14} have examined the impact of stapled *versus* HS anastomoses following oesophagectomy (Table S5, supporting information). These, however, did not distinguish between CS and LSSM stapling techniques. Honda and colleagues¹⁰ did not include LSSM anastomoses, looking only at the differences between HS and CS anastomoses. They reported no differences in anastomotic leak rates but an increased risk of anastomotic stricture with CS. Wang and co-workers¹³ only compared HS with CS anastomoses. All anastomoses were performed in the neck, and no significant differences were demonstrated with regard to anastomotic leak, stricture or mortality. Markar *et al.*¹⁴ compared HS with stapled oesophagogastric anastomoses, but did not separate the types of stapled anastomosis further. They did not observe significant differences in anastomotic leakage or 30-day mortality. Anastomotic stricture occurred more frequently with stapled than with HS anastomoses. Another systematic review¹¹ examined eight RCTs, all comparing HS with CS anastomoses. No meta-analysis was performed, and the authors concluded that there was insufficient evidence to recommend either technique. Liu and colleagues¹² grouped all stapled anastomoses together and compared them with HS anastomoses. Although a number of subgroup analyses were performed, the overall results demonstrated no significant differences in anastomotic leak rates or 30-day mortality between HS and stapled anastomoses.

Although the data from the present study are interesting, it is not known precisely why LSSM anastomoses may

have a reduced anastomotic leak rate. Theories include: the wider anastomosis, hence also reducing the risk of anastomotic stricture; anastomosis performed near the greater curve arcade on the best perfused part of the stomach allows for improved healing; and the side-to-side orientation reduces traction-related tension^{24,58}.

The present study has some limitations. The studies included in the review span a large time scale of over 28 years, and used slightly different definitions of anastomotic leakage. Future trials and studies in this area should adhere to the Esophagectomy Complications Consensus Group definitions of anastomotic leakage⁶⁸, which classify leaks into three types in relation to severity and treatment needs. There is only limited published evidence on the use of the LSSM anastomoses, and this tends to be from more recently conducted studies. The included studies are heterogeneous in that they included different levels of anastomosis, suture material used, stapling device types and sizes, and approaches employed for oesophagectomy (open *versus* minimal access).

In the absence of large, high-quality, randomized trial data, this network meta-analysis provides the most up-to-date evidence base for comparing HS *versus* LSSM and CS techniques. Although triangular stapling showed promising results in the overall network, the encouraging results were not consistent in the sensitivity analysis. There is limited literature on the TS method, with only two papers describing outcomes for this technique; therefore it is difficult to give recommendations. The TS technique may be better viewed as a variation of the LSSM technique. The current multicentre international Oesophago-Gastric Anastomosis Audit⁶⁹ (<https://www.ogaa.org.uk>) is collecting data on outcomes after oesophagectomy, and includes intraoperative details regarding anastomotic techniques. Data from this large database will further inform surgical teams about the benefits of different anastomotic techniques.

Acknowledgements

S.K.K. and J.R.B. contributed equally to this work.

The authors thank the staff of the Medical Library, Queen Elizabeth Hospital, Birmingham, for obtaining some of the papers used in this meta-analysis. They also thank all members of the Oesophago-Gastric Anastomotic Audit, West Midlands Research Collaborative, for discussions that helped improve this paper, including J. Hodson, Statistician, Institute of Translational Medicine, Queen Elizabeth Hospital, for checking the statistical methods.

Disclosure: The authors declare no conflict of interest.

References

- 1 Muller JM, Erasmi H, Stelzner M, Zieren U, Pichlmaier H. Surgical therapy of oesophageal carcinoma. *Br J Surg* 1990; **77**: 845–857.
- 2 Sanghera SS, Nurkin SJ, Demmy TL. Quality of life after an esophagectomy. *Surg Clin North Am* 2012; **92**: 1315–1335.
- 3 Goense L, van Dijk WA, Govaert JA, van Rossum PS, Ruurda JP, van Hillegersberg R. Hospital costs of complications after esophagectomy for cancer. *Eur J Surg Oncol* 2017; **43**: 696–702.
- 4 Rutegard M, Lagergren P, Rouvelas I, Lagergren J. Intrathoracic anastomotic leakage and mortality after esophageal cancer resection: a population-based study. *Ann Surg Oncol* 2012; **19**: 99–103.
- 5 Junemann-Ramirez M, Awan MY, Khan ZM, Rahamim JS. Anastomotic leakage post-esophagogastrectomy for esophageal carcinoma: retrospective analysis of predictive factors, management and influence on longterm survival in a high volume centre. *Eur J Cardiothorac Surg* 2005; **27**: 3–7.
- 6 Sauvanet A, Mariette C, Thomas P, Lozac'h P, Segol P, Tiret E *et al.* Mortality and morbidity after resection for adenocarcinoma of the gastroesophageal junction: predictive factors. *J Am Coll Surg* 2005; **201**: 253–262.
- 7 Griffin SM, Shaw IH, Dresner SM. Early complications after Ivor Lewis subtotal esophagectomy with two-field lymphadenectomy: risk factors and management. *J Am Coll Surg* 2002; **194**: 285–297.
- 8 Markar S, Gronnier C, Duhamel A, Mabrut JY, Bail JP, Carrere N *et al.*; FREGAT (French Eso-Gastric Tumors) working group, FRENCH (Fédération de Recherche EN Chirurgie), and AFC (Association Française de Chirurgie). The impact of severe anastomotic leak on long-term survival and cancer recurrence after surgical resection for esophageal malignancy. *Ann Surg* 2015; **262**: 972–980.
- 9 Markar SR, Arya S, Karthikesalingam A, Hanna GB. Technical factors that affect anastomotic integrity following esophagectomy: systematic review and meta-analysis. *Ann Surg Oncol* 2013; **20**: 4274–4281.
- 10 Honda M, Kuriyama A, Noma H, Nunobe S, Furukawa TA. Hand-sewn *versus* mechanical esophagogastric anastomosis after esophagectomy: a systematic review and meta-analysis. *Ann Surg* 2013; **257**: 238–248.
- 11 Kim RH, Takabe K. Methods of esophagogastric anastomoses following esophagectomy for cancer: a systematic review. *J Surg Oncol* 2010; **101**: 527–533.
- 12 Liu QX, Min JX, Deng XF, Dai JG. Is hand sewing comparable with stapling for anastomotic leakage after esophagectomy? A meta-analysis. *World J Gastroenterol* 2014; **20**: 17218–17226.
- 13 Wang Q, He XR, Shi CH, Tian JH, Jiang L, He SL *et al.* Hand-sewn *versus* stapled esophagogastric anastomosis in the neck: a systematic review and meta-analysis of randomized controlled trials. *Indian J Surg* 2015; **77**: 133–140.
- 14 Markar SR, Karthikesalingam A, Vyas S, Hashemi M, Winslet M. Hand-sewn *versus* stapled oesophago-gastric anastomosis: systematic review and meta-analysis. *J Gastrointest Surg* 2011; **15**: 876–884.
- 15 Wang WP, Gao Q, Wang KN, Shi H, Chen LQ. A prospective randomized controlled trial of semi-mechanical *versus* hand-sewn or circular stapled esophagogastrectomy for prevention of anastomotic stricture. *World J Surg* 2013; **37**: 1043–1050.
- 16 Saluja SS, Ray S, Pal S, Sanyal S, Agrawal N, Dash NR *et al.* Randomized trial comparing side-to-side stapled and hand-sewn esophagogastric anastomosis in neck. *J Gastrointest Surg* 2012; **16**: 1287–1295.
- 17 Li J, Shen Y, Tan L, Feng M, Wang H, Xi Y *et al.* Cervical triangulating stapled anastomosis: technique and initial experience. *J Thorac Dis* 2014; **6**(Suppl 3): S350–S354.
- 18 Hayata K, Nakamori M, Nakamura M, Nakamura M, Katsuda M, Hayata K *et al.* Circular stapling *versus* triangulating stapling for the cervical esophagogastric anastomosis after esophagectomy in patients with thoracic esophageal cancer: a prospective, randomized, controlled trial. *Surgery* 2017; **162**: 131–138.
- 19 Kesler KA, Ramchandani NK, Jalal SI, Stokes SM, Mankins MR, Ceppa D *et al.* Outcomes of a novel intrathoracic esophagogastric anastomotic technique. *J Thorac Cardiovasc Surg* 2018; **156**: 1739–1745.e1.
- 20 Cipriani A, Higgins JP, Geddes JR, Salanti G. Conceptual and technical challenges in network meta-analysis. *Ann Intern Med* 2013; **159**: 130–137.
- 21 Salanti G. Indirect and mixed-treatment comparison, network, or multiple-treatments meta-analysis: many names, many benefits, many concerns for the next generation evidence synthesis tool. *Res Synth Methods* 2012; **3**: 80–97.
- 22 Liberati A, Altman DG, Tetzlaff J, Mulrow C, Gøtzsche PC, Ioannidis JP *et al.* The PRISMA statement for reporting systematic reviews and meta-analyses of studies that evaluate healthcare interventions: explanation and elaboration. *BMJ* 2009; **339**: b2700.
- 23 Low DE, Kuppusamy MK, Alderson D, Ceconello I, Chang AC, Darling G *et al.* Benchmarking complications associated with esophagectomy. *Ann Surg* 2017; **269**: 291–298.
- 24 Collard JM, Romagnoli R, Goncette L, Otte JB, Kestens PJ. Terminalized semimechanical side-to-side suture technique for cervical esophagogastrectomy. *Ann Thorac Surg* 1998; **65**: 814–817.
- 25 Lo CK, Mertz D, Loeb M. Newcastle–Ottawa Scale: comparing reviewers' to authors' assessments. *BMC Med Res Methodol* 2014; **14**: 45.
- 26 Stang A. Critical evaluation of the Newcastle–Ottawa scale for the assessment of the quality of nonrandomized studies in meta-analyses. *Eur J Epidemiol* 2010; **25**: 603–605.
- 27 Dias S, Welton NJ, Caldwell DM, Ades AE. Checking consistency in mixed treatment comparison meta-analysis. *Stat Med* 2010; **29**: 932–944.
- 28 Neupane B, Richer D, Bonner AJ, Kibret T, Beyene J. Network meta-analysis using R: a review of currently available automated packages. *PLoS One* 2014; **9**: e115065.

- 29 Rucker G, Schwarzer G. Ranking treatments in frequentist network meta-analysis works without resampling methods. *BMC Med Res Methodol* 2015; **15**: 58.
- 30 Simillis C, Lal N, Thoukididou SN, Kontovounisios C, Smith JJ, Hompes R *et al*. Open *versus* laparoscopic *versus* robotic *versus* transanal mesorectal excision for rectal cancer: a systematic review and network meta-analysis. *Ann Surg* 2019; **270**: 59–68.
- 31 Dias S, Welton NJ, Sutton AJ, Caldwell DM, Lu G, Ades AE. *Inconsistency in Networks of Evidence Based on Randomised Controlled Trials*. National Institute for Health and Care Excellence: London, 2014.
- 32 Peracchia A, Bardini R, Ruol A, Asolati M, Scibetta D. Esophagovisceral anastomotic leak. A prospective statistical study of predisposing factors. *J Thorac Cardiovasc Surg* 1988; **95**: 685–691.
- 33 Rostas JW, Graffree BD, Scoggins CR, McMasters KM, Martin RCG. Long-term outcomes after hand-sewn *versus* circular-stapled (25 and 29 mm) anastomotic technique after esophagogastrectomy for esophageal cancer. *J Surg Oncol* 2018; **117**: 469–472.
- 34 McManus KG, Ritchie AJ, McGuigan J, Stevenson HM, Gibbons JR. Sutures, staplers, leaks and strictures. A review of anastomoses in oesophageal resection at Royal Victoria Hospital, Belfast 1977–1986. *Eur J Cardiothorac Surg* 1990; **4**: 97–100.
- 35 Lee Y, Fujita H, Yamana H, Kakegawa T. Factors affecting leakage following esophageal anastomosis. *Surg Today* 1994; **24**: 24–29.
- 36 Honkoop P, Siersema PD, Tilanus HW, Stassen LP, Hop WC, van Blankenstein M. Benign anastomotic strictures after transhiatal esophagectomy and cervical esophagogastrostomy: risk factors and management. *J Thorac Cardiovasc Surg* 1996; **111**: 1141–1148.
- 37 Klink CD, Binnebosel M, Otto J, Boehm G, von Trotha KT, Hilgers RD *et al*. Intrathoracic *versus* cervical anastomosis after resection of esophageal cancer: a matched pair analysis of 72 patients in a single center study. *World J Surg Oncol* 2012; **10**: 159.
- 38 West of Scotland and Highland Anastomosis Study Group. Suturing or stapling in gastrointestinal surgery: a prospective randomized study. *Br J Surg* 1991; **78**: 337–341.
- 39 Craig SR, Walker WS, Cameron EW, Wightman AJ. A prospective randomized study comparing stapled with handsewn oesophagogastric anastomoses. *J R Coll Surg Edinb* 1996; **41**: 17–19.
- 40 Valverde A, Hay JM, Fingerhut A, Elhadad A. Manual *versus* mechanical esophagogastric anastomosis after resection for carcinoma: a controlled trial. French Associations for Surgical Research. *Surgery* 1996; **120**: 476–483.
- 41 Law S, Fok M, Chu KM, Wong J. Comparison of hand-sewn and stapled esophagogastric anastomosis after esophageal resection for cancer: a prospective randomized controlled trial. *Ann Surg* 1997; **226**: 169–173.
- 42 Hsu HH, Chen JS, Huang PM, Lee JM, Lee YC. Comparison of manual and mechanical cervical esophagogastric anastomosis after esophageal resection for squamous cell carcinoma: a prospective randomized controlled trial. *Eur J Cardiothorac Surg* 2004; **25**: 1097–1101.
- 43 Okuyama M, Motoyama S, Suzuki H, Saito R, Maruyama K, Ogawa J. Hand-sewn cervical anastomosis *versus* stapled intrathoracic anastomosis after esophagectomy for middle or lower thoracic esophageal cancer: a prospective randomized controlled study. *Surg Today* 2007; **37**: 947–952.
- 44 Luechakietisak P, Kasetsunthorn S. Comparison of hand-sewn and stapled in esophagogastric anastomosis after esophageal cancer resection: a prospective randomized study. *J Med Assoc Thai* 2008; **91**: 681–685.
- 45 Zhang YS, Gao BR, Wang HJ, Su YF, Yang YZ, Zhang JH *et al*. Comparison of anastomotic leakage and stricture formation following layered and stapler oesophagogastric anastomosis for cancer: a prospective randomized controlled trial. *J Int Med Res* 2010; **38**: 227–233.
- 46 Cayi R, Li M, Xiong G, Cai K, Wang W. Comparative analysis of mechanical and manual cervical esophagogastric anastomosis following esophagectomy for esophageal cancer. *Nan Fang Yi Ke Da Xue Xue Bao* 2012; **32**: 908–909.
- 47 Liu QX, Qiu Y, Deng XF, Min JX, Dai JG. Comparison of outcomes following end-to-end hand-sewn and mechanical oesophagogastric anastomosis after oesophagectomy for carcinoma: a prospective randomized controlled trial. *Eur J Cardiothorac Surg* 2015; **47**: e118–e123.
- 48 Zhu ZJ, Zhao YF, Chen LQ, Hu Y, Liu LX, Wang Y *et al*. Clinical application of layered anastomosis during esophagogastrostomy. *World J Surg* 2008; **32**: 583–588.
- 49 Xu QR, Wang KN, Wang WP, Zhang K, Chen LQ. Linear stapled esophagogastrostomy is more effective than hand-sewn or circular stapler in prevention of anastomotic stricture: a comparative clinical study. *J Gastrointest Surg* 2011; **15**: 915–921.
- 50 Blackmon SH, Correa AM, Wynn B, Hofstetter WL, Martin LW, Mehran RJ *et al*. Propensity-matched analysis of three techniques for intrathoracic esophagogastric anastomosis. *Ann Thorac Surg* 2007; **83**: 1805–1813.
- 51 Liu YJ, Fan J, He HH, Zhu SS, Chen QL, Cao RH. Anastomotic leakage after intrathoracic *versus* cervical oesophagogastric anastomosis for oesophageal carcinoma in Chinese population: a retrospective cohort study. *BMJ Open* 2018; **8**: e021025.
- 52 Price TN, Nichols FC, Harmsen WS, Allen MS, Cassivi SD, Wigle DA *et al*. A comprehensive review of anastomotic technique in 432 esophagectomies. *Ann Thorac Surg* 2013; **95**: 1154–1161.
- 53 Furukawa Y, Hanyu N, Hirai K, Ushigome T, Kawasaki N, Toyama Y *et al*. Usefulness of automatic triangular anastomosis for esophageal cancer surgery using a linear stapler (TA-30). *Ann Thorac Cardiovasc Surg* 2005; **11**: 80–86.
- 54 Wang ZQ, Jiang YQ, Xu W, Cai HR, Zhang Z, Yin Z *et al*. A novel technique for cervical gastro-oesophageal anastomosis during minimally invasive oesophagectomy. *Int J Surg* 2018; **53**: 221–229.

- 55 Zieren HU, Muller JM, Pichlmaier H. Prospective randomized study of one- or two-layer anastomosis following oesophageal resection and cervical oesophagostomy. *Br J Surg* 1993; **80**: 608–611.
- 56 Casson AG, Porter GA, Veugelers PJ. Evolution and critical appraisal of anastomotic technique following resection of esophageal adenocarcinoma. *Dis Esophagus* 2002; **15**: 296–302.
- 57 Behzadi A, Nichols FC, Cassivi SD, Deschamps C, Allen MS, Pairolo PC. Esophagogastric anastomosis: the influence of stapled *versus* hand-sewn anastomosis on outcome. *J Gastrointest Surg* 2005; **9**: 1031–1042.
- 58 Ercan S, Rice TW, Murthy SC, Rybicki LA, Blackstone EH. Does esophagogastric anastomotic technique influence the outcome of patients with esophageal cancer? *J Thorac Cardiovasc Surg* 2015; **129**: 623–631.
- 59 Kondra J, Ong SR, Clifton J, Evans K, Finley RJ, Yee J. A change in clinical practice: a partially stapled cervical esophagogastric anastomosis reduces morbidity and improves functional outcome after esophagectomy for cancer. *Dis Esophagus* 2008; **21**: 422–429.
- 60 Harustiak T, Pazdro A, Snajdauf M, Stolz A, Lischke R. Anastomotic leak and stricture after hand-sewn *versus* linear-stapled intrathoracic oesophagogastric anastomosis: single-centre analysis of 415 oesophagectomies. *Eur J Cardiothorac Surg* 2016; **49**: 1650–1659.
- 61 Mishra PK, Shah H, Gupta N, Varshney V, Patil NS, Jain A *et al*. Stapled *versus* hand-sewn cervical esophagogastric anastomosis in patients undergoing esophagectomy: a retrospective cohort study. *Ann Med Surg (Lond)* 2016; **5**: 118–124.
- 62 Sugimura K, Miyata H, Matsunaga T, Asukai K, Yanagimoto Y, Takahashi Y *et al*. Comparison of the modified Collard and hand-sewn anastomosis for cervical esophagogastric anastomosis after esophagectomy in esophageal cancer patients: a propensity score-matched analysis. *Ann Gastroenterol Surg* 2019; **3**: 104–113.
- 63 Laterza E, de' Manzoni G, Veraldi GF, Guglielmi A, Tedesco P, Cordiano C. Manual compared with mechanical cervical oesophagogastric anastomosis: a randomised trial. *Eur J Surg* 1999; **165**: 1051–1054.
- 64 Walther B, Johansson J, Johnsson F, Von Holstein CS, Zilling T. Cervical or thoracic anastomosis after esophageal resection and gastric tube reconstruction: a prospective randomized trial comparing sutured neck anastomosis with stapled intrathoracic anastomosis. *Ann Surg* 2003; **238**: 803–814.
- 65 Singh D, Maley RH, Santucci T, Macherey RS, Bartley S, Weyant RJ *et al*. Experience and technique of stapled mechanical cervical esophagogastric anastomosis. *Ann Thorac Surg* 2001; **71**: 419–424.
- 66 Sokouti M, Golzari SE, Pezeshkian M, Farahnak MR. The role of esophagogastric anastomotic technique in decreasing benign stricture formation in the surgery of esophageal carcinoma. *J Cardiovasc Thorac Res* 2013; **5**: 11–16.
- 67 Sun HB, Li Y, Liu XB, Zhang RX, Wang ZF, Zheng Y *et al*. Embedded three-layer esophagogastric anastomosis reduces morbidity and improves short-term outcomes after esophagectomy for cancer. *Ann Thorac Surg* 2016; **101**: 1131–1138.
- 68 Low DE, Alderson D, Cecconello I, Chang AC, Darling GE, D'Journo XB *et al*. International consensus on standardization of data collection for complications associated with esophagectomy: Esophagectomy Complications Consensus Group (ECCG). *Ann Surg* 2015; **262**: 286–294.
- 69 Kamarajah SKSP, Bundred J, Siaw-Acheampong K, Jefferies B, Nepogodiev D, Evans R *et al*. International variation in surgical practices in units performing oesophagectomy for oesophageal cancer: a unit survey of the participants of the Oesophago-Gastric Anastomosis Audit (OGAA). *Meeting of the Association of Upper Gastrointestinal Surgery, Edinburgh* 2018.

Supporting information

Additional supporting information can be found online in the Supporting Information section at the end of the article.