

## Data on a Laves phase intermetallic matrix composite in situ toughened by ductile precipitates

Knowles, Alexander J.; Bhowmik, Ayan; Purkayastha, Surajit; Jones, Nicholas G.; Giuliani, Finn; Clegg, William J.; Dye, David; Stone, Howard J.

DOI:

[10.1016/j.dib.2017.08.005](https://doi.org/10.1016/j.dib.2017.08.005)

License:

Creative Commons: Attribution (CC BY)

### Document Version

Publisher's PDF, also known as Version of record

### Citation for published version (Harvard):

Knowles, AJ, Bhowmik, A, Purkayastha, S, Jones, NG, Giuliani, F, Clegg, WJ, Dye, D & Stone, HJ 2017, 'Data on a Laves phase intermetallic matrix composite in situ toughened by ductile precipitates', *Data in Brief*, vol. 14, pp. 489-493. <https://doi.org/10.1016/j.dib.2017.08.005>

[Link to publication on Research at Birmingham portal](#)

### General rights

Unless a licence is specified above, all rights (including copyright and moral rights) in this document are retained by the authors and/or the copyright holders. The express permission of the copyright holder must be obtained for any use of this material other than for purposes permitted by law.

- Users may freely distribute the URL that is used to identify this publication.
- Users may download and/or print one copy of the publication from the University of Birmingham research portal for the purpose of private study or non-commercial research.
- User may use extracts from the document in line with the concept of 'fair dealing' under the Copyright, Designs and Patents Act 1988 (?)
- Users may not further distribute the material nor use it for the purposes of commercial gain.

Where a licence is displayed above, please note the terms and conditions of the licence govern your use of this document.

When citing, please reference the published version.

### Take down policy

While the University of Birmingham exercises care and attention in making items available there are rare occasions when an item has been uploaded in error or has been deemed to be commercially or otherwise sensitive.

If you believe that this is the case for this document, please contact [UBIRA@lists.bham.ac.uk](mailto:UBIRA@lists.bham.ac.uk) providing details and we will remove access to the work immediately and investigate.



ELSEVIER

Contents lists available at ScienceDirect

## Data in Brief

journal homepage: [www.elsevier.com/locate/dib](http://www.elsevier.com/locate/dib)

## Data Article

## Data on a Laves phase intermetallic matrix composite in situ toughened by ductile precipitates



Alexander J. Knowles<sup>a,b,\*</sup>, Ayan Bhowmik<sup>b</sup>,  
 Surajit Purkayastha<sup>a</sup>, Nicholas G. Jones<sup>a</sup>, Finn Giuliani<sup>b</sup>,  
 William J. Clegg<sup>a</sup>, David Dye<sup>b</sup>, Howard J. Stone<sup>a</sup>

<sup>a</sup> Department of Materials Science and Metallurgy, University of Cambridge, Cambridge CB3 0F3, UK

<sup>b</sup> Department of Materials, Imperial College, South Kensington, London SW7 2AZ, UK

## ARTICLE INFO

## Article history:

Received 28 June 2017

Received in revised form

6 July 2017

Accepted 1 August 2017

Available online 3 August 2017

## ABSTRACT

The data presented in this article are related to the research article entitled “Laves phase intermetallic matrix composite in situ toughened by ductile precipitates” (Knowles et al.) [1]. The composite comprised a  $\text{Fe}_2(\text{Mo}, \text{Ti})$  matrix with bcc (Mo, Ti) precipitated laths produced in situ by an aging heat treatment, which was shown to confer a toughening effect (Knowles et al.) [1]. Here, details are given on a focused ion beam (FIB) slice and view experiment performed on the composite so as to determine that the 3D morphology of the bcc (Mo, Ti) precipitates were laths rather than needles. Scanning transmission electron microscopy (S(TEM)) micrographs of the microstructure as well as energy dispersive X-ray spectroscopy (EDX) maps are presented that identify the elemental partitioning between the C14 Laves matrix and the bcc laths, with Mo rejected from the matrix into laths. A TEM selected area diffraction pattern (SADP) and key is provided that was used to validate the orientation relation between the matrix and laths identified in (Knowles et al.) [1] along with details of the transformation matrix determined.

© 2017 The Authors. Published by Elsevier Inc. This is an open access article under the CC BY license (<http://creativecommons.org/licenses/by/4.0/>).

DOI of original article: <http://dx.doi.org/10.1016/j.scriptamat.2017.06.043>

\* Corresponding author at: Department of Materials, Imperial College, South Kensington, London SW7 2AZ, UK.

E-mail address: [a.knowles@ic.ac.uk](mailto:a.knowles@ic.ac.uk) (A.J. Knowles).

<http://dx.doi.org/10.1016/j.dib.2017.08.005>

2352-3409/© 2017 The Authors. Published by Elsevier Inc. This is an open access article under the CC BY license (<http://creativecommons.org/licenses/by/4.0/>).

## Specifications Table

Subject area	<i>Materials Science</i>
More specific subject area	<i>Metallurgy, Titanium Alloys</i>
Type of data	<i>Images (microscopy: FIB-SEM, STEM, STEM-EDX, TEM SADP)</i>
How data was acquired	<i>FIB-SEM FEI Helios, TEM JEOL 2100F</i>
Data format	<i>Analysed</i>
Experimental factors	<i>Arc melted Fe-30Ti-10Mo (at.%) aged at 1000 °C for 500 h</i>
Experimental features	<i>Fe<sub>2</sub>(Mo, Ti) C14 Laves matrix composite with bcc (Mo, Ti) precipitated laths</i>
Data source location	<i>Department of Materials Science and Metallurgy, University of Cambridge, Cambridge, CB3 0F3, UK Department of Materials, Imperial College, South Kensington, London SW7 2AZ, UK</i>
Data accessibility	<i>Data is with this article and [1]</i>

## Value of the data

- Determination of the 3D microstructure of a new Laves phase intermetallic matrix composite through a focused ion beam (FIB) slice and view experiment and surface reconstruction.
- STEM micrographs and STEM-EDX mapping identifying the elemental partitioning between C14 Laves matrix and bcc (Mo, Ti) precipitated laths.
- Details of the determination and validation of the orientation relation between matrix and laths identified in [1].

## 1. Data

Here we report data obtained from a Fe-30Ti-10Mo (at%) alloy [1]. This alloy was selected to explore the toughening effect of A2 (Mo, Ti) precipitates produced within a Laves phase intermetallic matrix composite during heat treatment. Here, we present the microstructure in 3D from a focused ion beam (FIB) slice and view experiment, as well as scanning transmission electron microscopy (S(TEM)) micrographs, energy dispersive X-ray spectroscopy (EDX) maps, a TEM selected area diffraction pattern (SADP) and details of the transformation matrix determination provided in [1].

## 2. Experimental design, materials and methods

Full details of the preparation of the alloy are provided in [1]. The Fe-30Ti-10Mo (at%) alloy was produced by arc melting > 99.9 at% purity elements under an argon atmosphere. Sections of the ingot were encapsulated within quartz ampoules under argon and aged at 1000 °C for 500 h, followed by water quenching.

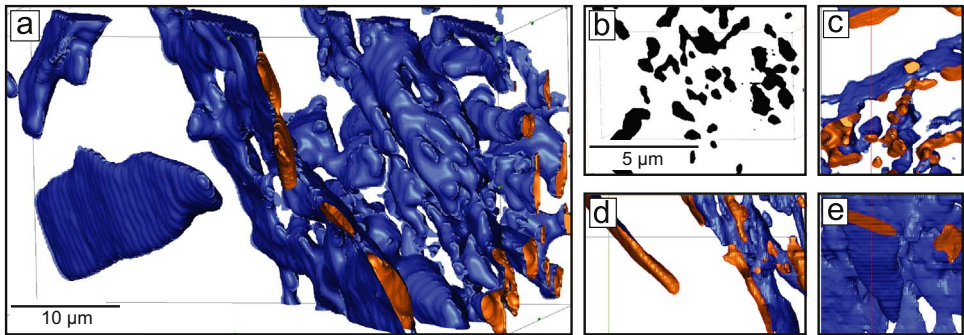
An FEI Helios NanoLab 600 dual beam FIB-scanning electron microscopy (SEM) system was used to perform a slice and view experiment through a ~15×15×15 μm volume by sequential FIB slicing followed by collection of secondary electron (SE) micrographs. The SE micrographs were then binarised and segmented using ImageJ to separate the C14 and A2 (bcc) phases, after which the images were stacked and an iso-surface produced using the Avizo software package.

Electron transparent foils for transmission electron microscopy (TEM) were produced by electro-polishing using a solution of 10 vol% perchloric acid in methanol at –30 °C and 18 V, followed by final

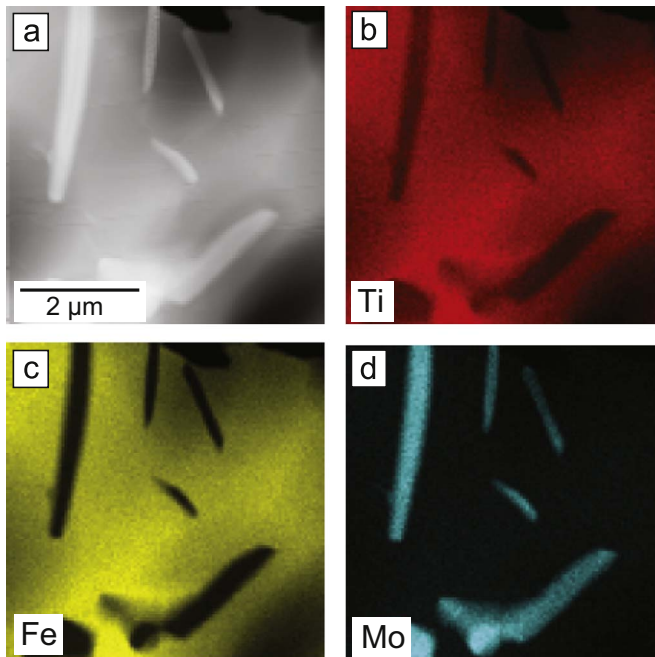
polishing using a GATAN precision ion polishing system operated at 5 kV, as in [1]. TEM and scanning TEM (STEM) were carried out using JEOL 2100F and FEI Osiris microscopes respectively.

From SEM micrographs of the aged alloy characterised in [1] uncertainty existed as to whether the precipitated A2 phase occurred as laths or as needles. In order to resolve this, a FIB slice and view experiment was performed, an example binarised SEM SE micrograph from which is shown in Fig. 1b. The 3D surface reconstruction of the laths in the Fe60Ti30Mo10 heat treated alloy can be seen in Fig. 1 along with  $x$ - $y$ ,  $x$ - $z$  and  $y$ - $z$  slices of the reconstruction. From this, it was identified that the A2 phase does occur as laths and not as needles [1].

In order to study the chemical segregation between the fine scale A2 plates and the C14 matrix STEM-EDX was employed, Fig. 2. The high-angle annular dark-field (HAADF)-STEM micrograph in Fig. 2a showed phase contrast similar to that observed in SEM imaging [1], with the C14 matrix



**Fig. 1.** Heat treated alloy FIB-SEM slice and view (a) 3D surface reconstruction of the A2 phase, (b) example binarised FIB-SEM slice, as well as slices through the A2 phase surfaces in the (c)  $x$ - $y$ , (d)  $x$ - $z$ , and (e)  $y$ - $z$  planes.



**Fig. 2.** Heat treated alloy (a) HAADF-STEM image, as well as STEM-EDX maps of (b) Ti, (c) Fe and (d) Mo.

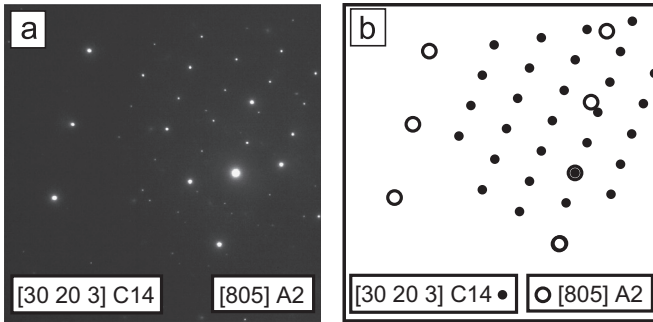


Fig. 3. Heat treated alloy (a) SADP of  $[805]_{A2}$  and  $[30\ 20\ 3]_{C14}$  and (b) corresponding key.

appearing dark and the A2 plates bright according to their relative average Z. STEM-EDX maps for Fe, Ti and Mo, Fig. 2b–d respectively, demonstrated the segregation of elements between the two phases, with the A2 laths being richer in Mo and leaner in Fe and Ti than the C14 matrix. This was consistent with point analyses of the two phases [2], where the isolated laths and those within the A2-C14 two-phase interpenetrating network were found to have similar compositions.

A TEM SADP and key of  $[805]_{A2}$  and  $[30\ 20\ 3]_{C14}$  is shown in Fig. 3 that was used to validate the orientation relation and transformation matrix between the matrix and laths identified in [1]. Further details of the determination of the transformation matrix are included in the Appendix.

## Acknowledgements

The authors wish to extend their thanks to M. Ollivier for assistance with Avizo 3D visualization. This work was supported by the Engineering and Physical Sciences Research Council under EP/N509486/1, EP/H022309/1, EP/H500375/1, EP/M005607/1 and EP/L025213/1.

## Appendix

The parallelism described by Eq. (1) in [1] can be expressed in terms of column vectors, representing crystal directions, as:

$$\begin{matrix} a_{C14} \\ a_{C14} \\ c_{C14} \end{matrix} \begin{bmatrix} 1 & 0 & 0 \\ 0 & 1 & 0 \\ 0 & 0 & 1 \end{bmatrix} \mathbf{n}_{C14} = a_{A2} \begin{bmatrix} \frac{1}{\sqrt{11}} & \frac{1}{\sqrt{11}} & \frac{3}{\sqrt{11}} \\ \frac{1}{\sqrt{3}} & \frac{1}{\sqrt{3}} & \frac{1}{\sqrt{3}} \\ \frac{1}{\sqrt{6}} & \frac{2}{\sqrt{6}} & \frac{1}{\sqrt{6}} \end{bmatrix} \mathbf{n}_{A2} \quad (\text{A1})$$

Given the orientation relationship described by Eq. (1) in [1], we can determine the transformation matrix  ${}_{A2}T_{C14}$  relating the unit vectors, in the two phases,  $\mathbf{n}_{A2}$  and  $\mathbf{n}_{C14}$ , which are the column vectors:

$$\mathbf{n}_{A2} = {}_{A2}T_{C14} \mathbf{n}_{C14} \quad (\text{A2})$$

After transposing and substituting the values of  $a_{A2}$  and  $a_{C14}$ , Eq. (A1) can be expressed in form of Eq. (A2) as follows:

$$\mathbf{n}_{A2} = \begin{bmatrix} 0.1976 & 0.3789 & 0.1644 \\ 0.1976 & -0.3789 & 0.3287 \\ 0.5936 & -0.3789 & -0.1644 \end{bmatrix} \mathbf{n}_{C14} \quad (\text{A3})$$

Converting the 3×3 matrix into an orthogonal matrix,  $A_2T_{C14}$  (Eq. (2) in [1]), the relationship can be rewritten as:

$$\mathbf{n}_{A2} = \begin{bmatrix} 0.3015 & 0.5774 & 0.4082 \\ 0.3015 & -0.5774 & 0.8164 \\ 0.9045 & -0.5774 & -0.4082 \end{bmatrix} \mathbf{n}_{C14} \quad (\text{A4})$$

### Transparency document. Supplementary material

Transparency document associated with this article can be found in the online version at <http://dx.doi.org/10.1016/j.dib.2017.08.005>.

### References

- [1] A.J. Knowles, T.S. Jun, A. Bhowmik, D.N. Johnstone, T.B. Britto, F. Guilianin, N.G. Jones, C.N. Jones, H.J. Stone, D. Dye, Laves phase intermetallic matrix composite in situ toughened by ductile precipitates, *Scr. Mater.* (2017) (in press).
- [2] A.J. Knowles, N.G. Jones, O.M.D.M. Messé, J.S. Barnard, C.N. Jones, H.J. Stone, *Int. J. Refract. Met. Hard Mater.* 60 (2016) 160–168.