

Therapeutic hypothermia after paediatric cardiac arrest

Scholefield, Barnaby R.; Silverstein, Faye S.; Telford, Russell; Holubkov, Richard; Slomine, Beth S.; Meert, Kathleen L.; Christensen, James R.; Nadkarni, Vinay M.; Dean, J. Michael; Moler, Frank W.

DOI:

[10.1016/j.resuscitation.2018.09.011](https://doi.org/10.1016/j.resuscitation.2018.09.011)

License:

Creative Commons: Attribution-NonCommercial-NoDerivs (CC BY-NC-ND)

Document Version

Peer reviewed version

Citation for published version (Harvard):

Scholefield, BR, Silverstein, FS, Telford, R, Holubkov, R, Slomine, BS, Meert, KL, Christensen, JR, Nadkarni, VM, Dean, JM & Moler, FW 2018, 'Therapeutic hypothermia after paediatric cardiac arrest: pooled randomized controlled trials', *Resuscitation*, vol. 133, pp. 101-107. <https://doi.org/10.1016/j.resuscitation.2018.09.011>

[Link to publication on Research at Birmingham portal](#)

Publisher Rights Statement:

Checked for eligibility: 14/11/2018

General rights

Unless a licence is specified above, all rights (including copyright and moral rights) in this document are retained by the authors and/or the copyright holders. The express permission of the copyright holder must be obtained for any use of this material other than for purposes permitted by law.

- Users may freely distribute the URL that is used to identify this publication.
- Users may download and/or print one copy of the publication from the University of Birmingham research portal for the purpose of private study or non-commercial research.
- User may use extracts from the document in line with the concept of 'fair dealing' under the Copyright, Designs and Patents Act 1988 (?)
- Users may not further distribute the material nor use it for the purposes of commercial gain.

Where a licence is displayed above, please note the terms and conditions of the licence govern your use of this document.

When citing, please reference the published version.

Take down policy

While the University of Birmingham exercises care and attention in making items available there are rare occasions when an item has been uploaded in error or has been deemed to be commercially or otherwise sensitive.

If you believe that this is the case for this document, please contact UBIRA@lists.bham.ac.uk providing details and we will remove access to the work immediately and investigate.

INTRODUCTION

Therapeutic hypothermia (hypothermia) as compared to therapeutic normothermia (normothermia) for treatment of comatose children resuscitated after out-of-hospital or in-hospital cardiac arrest did not confer a significant benefit in survival with favourable functional outcome in two independent, parallel trials which utilized identical study protocols(1,2). Current paediatric guidelines recommend either hypothermia or normothermia for target temperature management (TTM)(3). However, since effect sizes tested were in the range of 10 to 20 percent, uncertainty persists regarding optimal temperature management.

In the broad paediatric age range, there are multiple differences between cardiac arrests occurring in the out-of-hospital versus in-hospital setting including patient demographics, underlying pre-existing pathology, aetiology of cardiac arrest, response times and resuscitative skills of the initial responders, and survival rates (4). These differences informed a decision by the THAPCA trials investigators to enrol patients into two separate independent parallel clinical trials (ClinicalTrials.gov NCT00880087 and NCT00878644). However, a major challenge in paediatric cardiac arrest trials is recruitment of sufficiently large sample sizes to detect small clinically significant differences(5). As the underlying mechanism for potential benefit from hypothermia after a hypoxic-ischemic insult is similar in both paediatric populations, the THAPCA trial investigators proposed a secondary analysis of the comparative efficacy and safety of the two temperature interventions in the combined population of out-of-hospital and in-hospital cardiac arrest study cohorts. We report here the results of the pooled data analysis from these two trials which used identical protocols.

METHODOLOGY

Design

The two THAPCA trials were conducted in paediatric intensive care units (ICUs) at 41 enrolling children's hospitals in the United States, Canada, and United Kingdom. The rationale, study design, outcome selection process, protocol summary, 12-month pilot vanguard phase and individual trial outcomes were previously published (6-8). Funding for both trials was from the National Heart, Lung, and Blood Institute (NHLBI). The trial protocols differed only in the inclusion criteria definition of out-of-hospital and in-hospital cardiac arrest(1,2). The institutional review boards of all participating sites and the data-coordinating centre approved the protocol and informed consent documents. Site research coordinators collected all data, and statisticians at the data-coordinating centre (University of Utah) performed all analyses. Site training, data management and site monitoring were described in the Supplementary Appendix of each trial report(1,2). All site investigators vouched for their submitted data. The current pooled study was approved by the THAPCA executive committee prior to analysis of either of the THAPCA trials.

Patient Population

Children ≥ 48 hours and < 18 years old who sustained cardiac arrest, required chest compressions for \geq two minutes, and required mechanical ventilation after return of circulation, met inclusion criteria. Major exclusion criteria were scores of 5 or 6 on the Glasgow Coma Scale motor response subscale (scores range from 1 to 6, lower scores indicate worse function), inability to randomize within 6 hours of return of circulation, active and refractory severe bleeding, pre-existing illness with life expectancy less than 12 months, and lack of commitment to aggressive care. Full exclusion criteria lists were provided in the Supplementary Appendix of the two trial reports(1,2). Written informed consent from a parent or legal guardian was required.

Randomization and Intervention

Eligible patients were randomized to hypothermia or normothermia in a 1:1 ratio using permuted blocks stratified by clinical centre and age (younger than 2 years, 2 to 11 years, and 12 years or older).

31 Targeted temperature management (TTM) was actively maintained for 120 hours in both groups, as
32 previously described(1,2). Participants assigned to hypothermia were pharmacologically paralyzed, sedated
33 and cooled (or warmed if indicated) by surface cooling using a Blanketrol III cooling unit (Cincinnati
34 SubZero, Cincinnati) with mattresses applied anteriorly and posteriorly, to achieve and maintain 33°C
35 (range 32-34°C) core temperature for 48 hours. They were rewarmed over 16 hours or longer to target
36 temperature 36.8°C (range 36-37.5°C) which was actively maintained throughout the remainder of the 120
37 hour intervention period. Patients randomized to normothermia received identical care except core
38 temperature was actively maintained at 36.8°C (range 36-37.5°C) for 120 hours with the cooling unit. Dual
39 central temperature monitoring (oesophageal, rectal, or bladder) and a servo-control mode were used. For
40 patients supported with extracorporeal membrane oxygenation (ECMO) at the time of randomization or
41 later, temperature was controlled with ECMO using a single central temperature monitor. All other aspects
42 of care were determined by clinical teams.

43 **Outcomes**

44
45 The primary outcome was survival with favourable neurobehavioral outcome at 12 month follow-up,
46 defined as an age-corrected standard score ≥ 70 on the Vineland Adaptive Behaviour Scales, Second
47 Edition (VABS-II)(9). The VABS-II has an age-corrected mean score of 100 (standard deviation, 15); higher
48 scores indicate better performance. VABS-II data were collected centrally (Kennedy Krieger Institute,
49 Baltimore, MD) via telephone by a trained interviewer blinded to treatment assignment. As pre-specified in
50 the protocol, enrolled children with pre-arrest VABS-II scores below 70 (based on data from caregiver
51 questionnaire completed at each site within 24 hours of randomization) were excluded only from the
52 primary efficacy analysis. Patients with no baseline VABS-II available were considered eligible for the
53 primary analysis if their baseline Paediatric Overall Performance Category (POPC) and Paediatric Cerebral
54 Performance Category (PCPC) scores were in normal or mild disability categories(10,11). Scores on these
55 scales range from 1 to 6, with lower scores representing less disability; patients with scores of 1 or 2 on
56 both scales were eligible for the primary analysis.

57 Secondary outcomes were change in neurobehavioral function, measured as the difference from
58 pre-arrest baseline to 12 month measurement on the VABS-II (assigning deceased cases and those with

lowest possible VABS-II scores worst possible outcomes, regardless of baseline function) and survival at 12 months. Safety outcomes included the incidences of blood product use, infection, and serious arrhythmias through seven days, and 28-day mortality. The outcome assessment methodology was previously described(1,2).

Statistical Analysis

Individual patient data from both primary trial datasets were combined. Identical definitions, coding, reference units and data collection processes were used for each trial enabling combination without loss of data items. The efficacy analysis for the primary outcome was performed using a pre-specified modified intention-to-treat approach in both trials, excluding children with poor pre-arrest neurobehavioral function. Secondary efficacy outcomes were analysed among all children. Safety analyses were done by treatment received. The primary outcome and 12 month mortality were compared between assigned treatment groups using a Cochran-Mantel-Haenszel test stratified by categorized age and study. Change in VABS-II was analysed using van Elteren's modification of the Mann-Whitney test (12), stratifying by categorized age and study, treating death as the worst outcome and the lowest possible VABS-II score as the second-worst outcome. For this exploratory investigation, significance was declared at the 0.05 for all tests. The probability of survival to one year was evaluated by comparing survival curves between arms using a log-rank test stratified by age category. Univariate analysis of prognostic risk factors for survival independent of treatment group were analysed. Multivariable analysis for prognostic factors for neurobehavioral outcome have been presented previously for each trial(13,14). Analyses were performed using SAS software, version 9.4 (SAS Institute, Inc., Cary, NC).

RESULTS

Characteristics of Study Cohort

Both trials commenced on September 1, 2009 with THAPCA-OH patients enrolled through December 31, 2012 at 36 centres in USA and Canada (2 did not recruit) and THAPCA-IH patients enrolled until February 27, 2015 at 37 sites in the USA, Canada and UK (9 sites did not enrol). Forty-seven centres

in total participated in at least one of the THAPCA trials, with 6 centres not randomizing at least one case. The full CONSORT Diagram is described in Appendix Fig 1. A total of 4146 patients met inclusion criteria and were screened; 1221 had no trial exclusion criteria and were eligible for enrolment; and 624 were enrolled, 321 randomized to hypothermia and 303 to normothermia. Eight patients, who were assigned to hypothermia and three normothermia, did not receive an intervention and one normothermia patient received hypothermia therapy. Five hundred and seventeen patients had VABS-II scores ≥ 70 at baseline, prior to their cardiac arrest, and were eligible for the primary outcome assessment.

The baseline characteristics of the two temperature treatment groups were similar (Table 1). Overall median age was 1.5 years IQR [0.3, 7.1] with 63% male; 71% had one or more pre-existing medical condition most frequent being cardiac, lung or airway, and neurological conditions. Thirty percent (190/624) had a primary cardiac aetiology for their arrest, 9% (57/624) presented with a shockable rhythm (ventricular fibrillation or ventricular tachycardia); and the median estimated duration of chest compressions was 25 minutes IQR [12, 42.5]. Time from return of spontaneous circulation after cardiac arrest to target temperature following randomization for hypothermia group was Median 6.9 hours [Interquartile range (IQR) 5.6 to 8.8] and normothermia group 6.4 hours [IQR 5.3 to 8.4].

Outcomes

The proportion of survivors with the primary outcome VABS-II score ≥ 70 at 12 months was not significantly different between those treated with hypothermia (28%) compared to the normothermia intervention (26%); relative risk 1.08; 95% confidence interval [CI] 0.81 to 1.42; $p=0.61$. In patients included in the primary analysis who died or had a profound (VABS-II < 45 or lowest) or moderate to severe disability (VABS-II 45-69), there was also no significant difference in proportion of patients treated with either therapy ($p=0.4$) (Table 2). The secondary outcome of one year change in VABS-II score from baseline score did not differ between groups ($p=0.20$); nor did the proportion in whom the VABS-II score decreased by no more than 15 points (1 standard deviation) or improve differ (hypothermia 22% versus normothermia 21%) (Table 2).

Survival at 12 months for 614 patients, whose outcome status was known, did not differ between groups (hypothermia 44% vs. normothermia 38%; relative risk 1.15; 95% CI 0.95 to 1.38; $p=0.15$) (Table 2).

Survival duration was longer for patients receiving hypothermia; (Figure 1a, $p=0.045$). Sensitivity analysis revealed that this difference was due to the greater number of deaths occurring in the normothermia group between days 0 to 3 (Figure 1b, $p=0.91$; Supplemental Figure 2, $p=0.003$). Specifically, a greater number of deaths occurred on day 0 in the normothermia group (19 versus 5) and the majority (12/19) were due to cardiovascular failure/futility (Table 3). By 12 months, the proportions of deaths by individual causes were similar for patients treated with hypothermia and normothermia. The majority of deaths were attributed to brain death (24.6% versus 24.9%), withdrawal of medical support in view of poor neurological prognosis (35.8 versus 31.4%), or cardiovascular failure/futility (21.2% versus 24.9%) (Table 3).

Prognostic factors for survival and for survival at 12 months with VABS-II ≥ 70 were analysed (Table 4). A cardiac aetiology of cardiac arrest, initial rhythm of ventricular fibrillation or ventricular tachycardia, shorter duration of cardiopulmonary resuscitation, fewer epinephrine doses, and cardiac arrest occurrence during a weekday (versus weekend) and during the day (versus night) were each associated with improved survival, independent of treatment arm. Children whose cardiac arrest occurred in-hospital compared to out-of-hospital were almost twice as likely to survive (OR 1.79 [1.29, 2.49]) and three times as likely to survive with VABS-II ≥ 70 (OR 3.09, 95% CI [2.04, 4.69]) (see Supplemental Table 1).

Safety

Safety outcome data were available for 314 in the hypothermia group and 298 in the normothermia group. The incidences of blood-product use, infection, and serious arrhythmias within seven days did not differ between these groups; nor did 28 day mortality significantly differ [hypothermia, 146/314(46%) versus normothermia, 159/298(53%), $p=0.10$; (see Supplemental Table 2).

DISCUSSION

In this analysis of pooled data from two identically conducted targeted temperature management randomized clinical trials(1,2), there was no significant improvement in survival with favourable neurobehavioral outcome, defined as a VABS-II score ≥ 70 for hypothermia (28%) versus normothermia (26%) groups. Additionally, the best change from baseline outcome, defined as a VABS-II score reduction by no more than 15 points (1 SD) at one year, was similar for hypothermia (22%) and normothermia (21%) groups. Mortality at one year was not statistically different by temperature intervention, although earlier

248 deaths in the first three days of intervention were observed with normothermia. Hypothermia and
249 normothermia groups had comparable safety profiles for blood product utilization, infection, serious cardiac
250 arrhythmia and 28-day mortality.

251 We were able to perform a pooled randomized control trial (RCT) analysis, as opposed to an
252 individual patient data (IPD) meta-analysis, because the RCT protocols were identical with respect to all
253 elements including data definitions, collection and handling procedures, and primary and secondary
254 outcomes. In addition, the trials were initiated concurrently and predominantly at sites that participated in
255 both THAPCA trials, minimizing temporal and site-specific effects between trials. The justification for
256 conducting separate trials stemmed from analysis of a pre-trial planning cohort study that found differences
257 in the aetiology of arrest, initial cardiac arrest rhythm, resuscitation skills of initial responders and survival
258 outcomes between paediatric out-of-hospital and in-hospital cardiac arrest populations(4,15,16). In fact, the
259 substantial difference in proportion of favourable outcomes between the IH and OH cohorts provides
260 support for the decision to conduct separate trials in these two paediatric populations.

261 The current investigation was planned and approved by the trial executive committee prior to
262 completion of either trial. By combining the two trial datasets in the current investigation, we were able to
263 further explore the impact of hypothermia versus normothermia to ameliorate severe hypoxic-ischemic
264 injury following paediatric cardiac arrest in a sample approximately twice the size of the original trials.
265 However, in the pooled population as in the individual trials, there were no statistically significant
266 differences for the primary or two secondary outcomes. The larger sample size gained by combining the
267 two trials leads to more precise confidence intervals for treatment effect than in each individual trial, more
268 conclusively ruling out even moderate benefits of hypothermia.

270 In this study, both treatment arms received 120 hours of active temperature control, to prevent fever
271 (temperature >37.5°C), using surface temperature control devices, pharmacological sedation and
272 neuromuscular blocking medication as required. Our findings are similar to a large adult trial of targeted
273 temperature management (TTM) of 33°C versus 36°C for 36 hours(17), which found no statistically
274 significant difference in outcomes. However, neither the adult nor the paediatric trials compared active
275 TTM with no active temperature control. Recent reports of actual practice temperature management of

adult cardiac arrest describe a change in TTM from 33°C to 36°C(18-20). This practice has been accompanied by trends in less active cooling, greater exposure to fever, and worse clinical outcomes(20). The reports suggest an actual practice 'belief' that fever prevention can be achieved without protocol guided sedation, neuromuscular blockage and servo regulated cooling devices. A large ongoing adult trial of hypothermia (33°C) versus standard care avoiding early fever (>37.8°C) management after cardiac arrest may provide needed information to address this critical question (ClinicalTrials.gov Identifier: NCT02908308).

Although there was no overall difference in survival at 12 months, we found a difference in time to death between hypothermia and normothermia treatment groups (Figure 1a; p=0.045). This difference was explained by more early deaths in the normothermia group during days 0 through 3 (Figure 1c; p=0.003). There are at least two reasons for this observation. First, for day 0, increased deaths due to cardiac failure in the normothermia group was observed, although this trend largely balanced out by day 3 (Table 3). This suggests hypothermia may have been protective or provided additional inotropic effects for the myocardium in the early post arrest period. Early hypotension in the first 6 to 12 hours post cardiac arrest is associated with worse outcome in children comatose after cardiac arrest(21,22). Hypothermia has been reported to reduce inotropic or vasopressor requirement and reduce/rebalance myocardial work to oxygen demand(23). Following adult cardiac arrest, hypothermia increases systemic vascular resistance leading to reduced vasopressor use and lower oxygen consumption(24). In children, hypothermia has been reported as a useful salvage therapy for severe low cardiac output syndrome post congenital heart disease surgery(25). The second identifiable factor associated with hypothermia was lower numbers of deaths through day 3 that were attributable to brain death or to poor neurological prognosis [hypothermia 10% (31/321) versus normothermia 19% (57/303); p=0.001](Table 3). This likely reflected delays in neurological prognostic and brain death assessments in hypothermic patients until at least 24 hours after normothermia was achieved; this common practice stemmed from consideration that sedative drugs administered concurrently with hypothermia could have prolonged clearance and thereby confound clinical assessments(26).

There are limitations with the current study. As described previously, caregivers and research staff in the ICU were aware of treatment assignments of patients, although the primary outcome one year VABS-

04 All interview assessments were performed by individuals who were unaware of treatment group
05 assignment(1,2). We could not rule out the possibility of earlier death or determination by clinical teams of
06 futility in the normothermia group, as discussed above. Although planned prior to the completion of the two
07 THAPCA trials, this pooled analysis was performed after publication of the two primary trials when the
08 results were known to the investigators. A major strength of this study was that pooling of individual patient
09 data analysis was possible due to identical protocols and data definitions. The larger sample size provided
10 greater statistical power to show potential differences in neurobehavioral, mortality and safety outcomes.
11 The inclusion and exclusion criteria selected patients with identical high risk of neurological morbidity and
12 mortality. The final inclusion of 15% (624/4146) of initially screened patients may limit the generalization of
13 the study findings to all paediatric cardiac arrest patients. However, the current pooled study included a
14 more heterogeneous and generalizable population than did either individual trial. Inclusion of patients
15 stratified with less severe injury, excluding the most severe hypoxic ischemic arrests (e.g. sudden infant
16 death syndrome), or selecting a more homogeneous population (e.g. drowning) might allow more focused
17 assessment of TTM efficacy. Unanswered questions remain regarding optimal evaluation of TTM. Future
18 trials should consider different durations and depth of cooling (27-29), earlier onset of TTM, more precise
19 patient stratification based on acute brain injury biomarkers, and adjunctive neuroprotective agents.

20 In conclusion, this larger pooled cohort of patients who were comatose after paediatric cardiac
21 arrest from in-hospital or out-of-hospital locations, therapeutic hypothermia did not confer a statistically
22 significant benefit in survival with a good functional outcome compared to therapeutic normothermia. Both
23 hypothermia and normothermia active temperature interventions had similar severe adverse event profiles.

24
25
26
27
28
29
30
31
32
33
34
35
36
37
38
39
40
41
42

Acknowledgements:

PERSONNEL, SITES, FUNDING AND ACKNOWLEDGEMENTS

Lead Site - University of Michigan, Ann Arbor, Michigan

Principal Investigator (PI) (Scientific) - Frank W. Moler, MD, MS

Data Coordinating Center (DCC), University of Utah, Salt Lake City, Utah.

Principal Investigator DCC - J. Michael Dean, MD, MBA

Lead Biostatistician - Richard Holubkov, PhD

Outcome Center, Kennedy Krieger Institute, Baltimore, Maryland. Academic affiliation with Johns Hopkins University, School of Medicine

James R. Christensen, MD, Beth S. Slomine, PhD

Executive Committee

F. Moler, MD, MS,	PI (Scientific)	University of Michigan
J. M. Dean, MD, MBA	PI (DCC)	University of Utah
R. Holubkov, PhD	Biostatistician	University of Utah
K. Meert, MD	Critical Care	Wayne State University
J. Hutchison, MD	Critical Care	University of Toronto
V. Nadkarni, MD	Critical Care	University of Pennsylvania
S. Shankaran, MD	Neonatology	Wayne State University
F. Silverstein, MD	Neurology	University of Michigan
J. Christensen, MD	Rehabilitation Medicine	Kennedy-Krieger Institute
V. Pemberton, RNC, MS	NHLBI	NIH
C. Nicholson, MD, MS	NICHHD	NIH

Sites and research teams - contributors

We acknowledge the contributions of the following sites and individuals who made the THAPCA-OH and THAPCA-IH Trial possible.

Site principal investigators (PI), Sub-investigators (Sub-I), Clinical research coordinators (CRC), Neurologists (Neurologist), Psychologists (Psychologist).

The Children's Hospital of Alabama, Birmingham, AL

J. Alten (PI), S. Borasino (Sub-I), K. Hock (CRC), K. Sewell (CRC), L. Dure (Neurologist),

Phoenix Children's Hospital, Phoenix, AZ

H. J. Dalton (PI), S. Buttram (PI), K. Wai (Sub-I), A. La Bell (CRC), C. Bliss (CRC), M. Lavoie (Psychologist), V. Bordes-Edgar (Psychologist)

Diamond Children's Medical Center, Tucson, AZ

A. Theodorou (PI), K. Typpo (Sub-I), C. Wells (CRC), J. Deschenes (CRC)

Children's Hospital Los Angeles, Los Angeles, CA

C. Newth (PI), S. Rubin (Sub-I), R. Bart (Sub-I), T. Deakers (Sub-I), A. Bhalla (Sub-I), B. Markovitz (Sub-I), J. DiCarlo (Sub-I), P. Ross (Sub-I), C. Herrington (Sub-I), W. Wells (Sub-I), R. Kim (Sub-I), V. Wang (Sub-I), M. Villa (RN), F. Fajardo (CRC), J. Kwok (CRC), J. Serrano (CRC), J. Valentine (CRC), A. Yamakawa (CRC), S. Briones (CRC), S. Cauley (RN), A. Briseno (RN), C. Young (RN), M. Nyc (CRC), T. Rosser (Neurologist), J.I. Gold (Psychologist), R. Engilman (Psychometrician)

Children's Hospital of Orange County, Orange, CA

A. Schwarz (PI), J. Haykawa (Sub-I), O. Vargas-Shiraishi (CRC), A. Galion (Neurologist)

Loma Linda University Children's Hospital, Loma Linda, CA

M. Mathur (PI), J. Newcombe (CRC), A. Pinto (CRC), S. Ashwal (Neurologist), J. Pivonka-Jones (Neuropsychologist)

Mattel Children's Hospital UCLA, Los Angeles, CA

R. Harrison (PI), R. Kelly (Sub-I), A. Madikians (Sub-I), M. Federman (Sub-I), M. Morgan (Sub-I), A. Yamakawa (CRC), M. Nyc (CRC), S. Briones (CRC), M. Villa (RN), J. Kwok (CRC), J. Serrano (CRC), J. Valentine (CRC) T. Rosser (Neurologist), R. Engilman (Psychometrician), J.I. Gold (Psychologist)

University of California, San Francisco Benioff Children's Hospital, San Francisco, CA

P. McQuillen (PI), L. Haeusslein (CRC), H. Glass (Neurologist)

183 **Hospital for Sick Children, Toronto, ON, Canada**

184 J. Hutchison (PI), S. Schwartz (Sub-I), A. Guerguerian (Sub-I), K. Boutis (Sub-I), D. Clark (CRC), J. Van
185 Huyse (CRC), K. Fusco (CRC), K. McBain (CRC), A. Krancevic (CRC), L. Toller (CRC), R. Gaiteiro (CRC),
186 C. Hahn (Neurologist), R. Sananes (Psychologist)

188 **Children's Hospital Colorado, Aurora, CO**

189 E. Dobyns (PI), J. Albietz (Sub-I), T. Wilson (CRC), B. Wathen (CRC), T. Bernard (Neurologist), J. Dise-
190 Lewis (Psychologist)

192 **Children's Healthcare of Atlanta, Atlanta, GA**

193 N. Pham (PI), N. Chanani (Sub-I), K. Walson (Sub-I), J. Sturm (Sub-I), W. Mahle (Sub-I), M. Wolf (Sub-I),
194 C. Stone (CRC), A. Wellons (CRC), S. Meisner (CRC), E. Hoar (CRC), S. Gentry (CRC), L. Smitley (CRC),
195 L. McMaster (CRC), P. Holt (Neurologist), B. Weissman (Neurologist), A. Alexander (Psychologist)

197 **Riley Hospital for Children, Indianapolis, IN**

198 R. Lutfi (PI), D. Sokol (neurologist), B. McDonald (psychologist)

200 **Anne and Robert Lurie Children's Hospital of Chicago, Chicago, IL**

201 D. Goodman (PI), E. Powell (Sub-I), S. Shah (CRC),

202 **Kosair Charities Pediatric Clinical Research Unit, Department of Pediatrics, University of Louisville**
203 **and the Kosair Children's Hospital, Louisville, KY**

204 M. Porter (PI), J. Sullivan (Sub-I), M. Ruppe (Sub-I), J. Berkenbosch (Sub-I), M. Thomas (CRC), L. Sears
205 (Psychologist)

206 **Johns Hopkins Children's Center, Baltimore, MD**

207 U. Bhalala (PI), J.K. Lee (PI), S. Kudchadkar (PI), D. Shaffner (Sub-I), M. Shackelford (CRC), P. Melvin
208 (CRC), R. Felling (Neurologist), B. Slomine (Psychologist)

209 **Outcome Center, Kennedy Krieger Institute, Baltimore, MD**

210 J.R. Christensen (Site PI), B.S. Slomine (Site Co-Investigator), E. DeMatt (Telephone Interviewer), M.
211 Talley (Telephone Interviewer), C. Rodweller (Telephone Interviewer)

212 **Children's Hospital of Michigan, Detroit, MI**

213 K. Meert (PI), S. Heidemann (Sub-I), J. Clark (Sub-I), A. Pawluszka (CRC), M. Lulic (RA), L. Sivaswamy
214 (Neurologist)

124 **C.S. Mott Children’s Hospital, University of Michigan, Ann Arbor, MI**

125 F. Moler (PI), M. Gaies (Sub-I), T. Cornell (Sub-I), M. Weber (CRC), J. Reske (CRC), L. Conlin (CRC), F.
126 Silverstein (Neurologist), M. Carlson (Neurologist), S. Warschausky (Psychologist), T. Behnke (Program
127 Administrator), D. Poszywak (Procurement Subcontract Administrator)

128
129 *“Research reported in this publication was supported by the National Center for Advancing*
130 *Translational Sciences of the National Institutes of Health under Award Numbers UL1 TR 000433 and*
131 *UL1 TR 000433. The content is solely the responsibility of the authors and does not necessarily*
132 *represent the official views of the National Institutes of Health.”*

133
134 **Children’s Hospitals and Clinics of Minnesota, Minneapolis, MN**

135 J. Nowak (PI), H. Ortega (EM Sub-I), D. Milner (EM Sub-I), E. Zielinski (CRC)

136
137 **Washington University, St, Louis, MO**

138 J. Pineda (PI), M. Shoykhet (Sub-I), S. Friess (Sub-I), K. Guilliams (Sub-I), A. Gazit (Sub-I), D. Jaffe (Sub-
139 I), T. Day (CRC), T. Hicks (CRC), L. Barganier (CRC), E. Fish (CRC), L. Toennies (CRC), P. Thurst (CRC),
140 S. Blankenship (CRC), M. Noetzel (Neurologist), K. Guilliams (Neurologist), D. White (Psychologist).

141 *“Research reported in this publication was supported by the Eunice Kennedy Shriver National Institute Of*
142 *Child Health & Human Development of the National Institutes of Health under Award Number U54 HD087011*
143 *to the Intellectual and Developmental Disabilities Research Center at Washington University. The content is*
144 *solely the responsibility of the authors and does not necessarily represent the official views of the National*
145 *Institutes of Health.”*

146
147
148 **Morgan Stanley Children’s Hospital/Columbia University Medical Center New York, NY**

149 C. Schleien (PI), N. Talathoti (CRC), C. Aguilar (CRC), V. Hinton (Psychologist)

150
151
152 **University of Rochester Medical Center/Golisano Children’s Hospital, Rochester, NY**

153 E. W. van der Jagt, (PI), E. R. Taillie (CRC), E. B. Nazarian (Sub-I), L. E. Daugherty (Sub-I), C.O. Davis
154 (Sub-I), H. R. Adams (Psychologist)

155
156 **Duke Children’s Hospital, Durham, NC**

157 G. Ofori-Amanfo (PI), K. Rehder (PI), S. Wrenn (CRC), T. Uhl (CRC), C. Milleson (CRC), E. Smith
158 (Neurologist), K. Gustafson (Psychologist), S. Asbeck (Psychologist), W. Gallentine (Neurologist)

159
160 **Nationwide Children’s Hospital, Columbus, OH**

161 E. Lloyd (PI), M. Hall (Sub-I), N. Khan (Sub-I), J. Frazier (Sub-I), Daniel Cohen (Sub-I), J. Haines (CRC), K.
162 Carter (CRC), L. Bird (CRC), W. Lo (Neurologist)

163
164 **Cincinnati Children’s Hospital, Cincinnati, OH**

165 D. Wheeler (PI), G. Geis (Sub-I), E. Beckman (CRC), S. Banschbach (CRC), K. Krallman (CRC)

166 **Rainbow Babies and Children's Hospital, Cleveland, OH**

167 K. Lidsky (PI), S. Bergant (CRC), A. Browning (CRC), N. Bass (Neurologist), R. Tangen (Psychologist)

168
169
170 **Penn State Children's Hospital, Hershey, PA**

171 NJ. Thomas (PI), A. Shelly (CRC), J. Vallati (CRC), P. Carper (CRC), D. Spear (CRC), A. McMonagle
172 (CRC), J. Stokes (CRC), H. Watts (CRC), W. Trescher (Neurologist), C. Flaherty-Craig (Psychologist)

173
174 **Children's Hospital of Philadelphia, Philadelphia, PA**

175 A. Topjian (PI), R. Berg (Sub-I), V. Nadkarni (Sub-I), A. Zuppa (Sub-I), J. Fitzgerald (Sub-I), P. Meaney
176 (Sub-I), M. DiLiberto (CRC), C. Twelves (CRC), S. McGowan (CRC), M. Sisko (CRC), B. Park (CRC), K.
177 Friedman (Psychologist),

178 *The project described was supported by the National Center for Research Resources and the National*
179 *Center for Advancing Translational Sciences, National Institutes of Health, through Grant UL1TR000003.*
180 *The content is solely the responsibility of the authors and does not necessarily represent the official views*
181 *of the NIH.*

182
183
184
185 **University of Pittsburgh Medical Center, Pittsburgh, PA**

186 E. Fink (PI), R. Hickey (Sub-I), A. Abraham (CRC)

187
188
189 **University of Tennessee Health Science Center, Memphis, TN**

190 S. Shah (PI), K. Anand (Sub-I), B. Moore (CRC), A. Nico West (CRC), M. Grandberry (CRC), N. Shah
191 (Neurologist), A. DeCrow (Psychologist), O. King DeBerry (Psychometrician), A. Huling (Psychometrician)

192
193 **Children's Medical Center Dallas, University of Texas Southwestern Medical School, Dallas, TX**

194 J. Koch (PI), P. Okada (Sub-I), D. Miles (Sub-I), L. Raman (Sub-I), M. Green (Sub-I), E. Golson (CRC), A.
195 Jones (CRC), D. Kelly (CRC), T. Plumb (CRC), K. Van de Bruinhorst (CRC), M. Dowling (Neurologist), P.
196 Stavinoha (Psychologist), A. Hernandez (Psychometrician)

197
198 **University of Texas Health Sciences Center at San Antonio, San Antonio, TX**

199 T. Wu (PI), C. Bauerfeld (Sub-I), M. Rodkey (Sub-I), H. Dibrell (CRC), S. Atkinson (Neurologist), L.
200 O'Donnell (Psychologist), J. Eubanks (Psychologist)

201
202 **Data Coordinating Center (DCC), University of Utah, Salt Lake City, UT**

203 J. M. Dean (PI), R. Holubkov (Biostatistician), B. Browning (Program Director), M. Gildea (Program
204 Director), R. Kuhn (Project Manager), A. Webster (Biostatistician), K. Page (Biostatistician), R. Telford
205 (Biostatistician), L. Herrera (Data Manager), J. Yearley (Director Data Management), J. Burr (CPCCRN)

Program Director, B. Marron (Administrative Assistant)

Primary Children's Hospital, Salt Lake City, UT

K.S. Bennett (PI), J. Sweney (PI), R. Lane (Sub-I), J. Lilley (CRC), S. Bjerregaard (CRC), K. Jacobsen (CRC), A. Watson, (CRC), D. Stephens (CRC), M. Delacruz (CRC), K. Cooley (CRC), N. Kwendakwema (CRC), G. Jensen (CRC), R. Moore (CRC), M. Sweney (Neurologist), D. Morita (Neurologist), R. Burr (Psychologist), T. Bennett (Sub-I), J. Henricksen (Sub-I), E. Hirshberg (Sub-I), G. Larsen (Sub-I), M. Schober (Sub-I), R. Dixon (Sub-I), J. Workman (Sub-I)

Seattle Children's Hospital, Seattle, WA

J. Zimmerman (PI), J. McGuire (Sub-I), R. Farris (Sub-I), O. Yanay (Sub-I), J. Reid (Sub-I), L. Smith (Sub-I), S. Hamilton (CRC), C. Greeley (CRC), C. Cheng (CRC), S. Gospe (Neurologist), C. Amlie-Lefond (Neurologist), D. Breiger (Psychologist), A. Paolozzi (Psychometrist)

Children's National Medical Center, Washington, DC

J. Berger (PI), D. Wessel (Sub-I), M. Sharron (Sub-I), S. Basu (Sub-I), A. Wratney (Sub-I), N. Dean (Sub-I), J. Reardon (CRC), E. Tomanio (CRC), J. Carpenter (Neurologist), S. Swanson (Psychologist), T. Brennan (Psychologist), P. Glass (Psychologist), B. Malek (Psychologist), M. Mintz (Psychologist) *Our follow ups were conducted in the Clinical Research Center which is supported by NIH P30HD040677*

Medical College of Wisconsin, Milwaukee, WI

M. T. Meyer (PI), M. Wakeham (Sub-I), S. Hanson (Sub-I), K. Murkowski (CRC)

UK Sites

Alder Hey Children's Hospital, Liverpool, United Kingdom

P. Baines (PI), N. Shetty (Sub-I), A. Wood (CRC), S. Siner (CRC), L. Walsh (CRC)

Birmingham Children's Hospital, Birmingham, United Kingdom

B. Scholefield (Lead UK Study PI), A. Jones (Lead UK Study CRC), T. Cameron (CRC), A. Mohammed Ali (Sub-I), K. Morris (Sub-I), I. Zafurallah (Sub-I), I A. Top (Sub-I), J. Menzies (CRC)

Great Ormond Street Hospital, London, United Kingdom

S. Skellett (PI), T. Thiruchelvam (PI), A.J. Petros (Sub-I), M.J. Peters (Sub-I) D. Goodacre (CRC), A. Jones (CRC),

University Hospital Southampton, Southampton, United Kingdom

J. Pappachan (PI), R. Ensom (CRC), K. Morton (CRC)

National Heart, Lung, and Blood Institute, Bethesda, MD

49 V. Pemberton
50
51
52
53
54

55 **Funding**

56 Primary support for the conduct of the THAPCA-IH and OH Trials was funding from the National Institutes
57 of Health (NIH), National Heart, Lung, and Blood Institute, Bethesda, MD. HL094345 (FWM) and
58 HL094339 (JMD).
59
60

61 Additional support from the following federal planning grants contributed to the planning of the THAPCA
62 Trials: NIH, *Eunice Kennedy Shriver* National Institute of Child Health and Development (NICHD),
63 Bethesda, MD. HD044955 (FWM) and HD050531 (FWM).
64

65 In part support was from the participation of the following research networks: Pediatric Emergency Care
66 Applied Research Network (PECARN) from cooperative agreements U03MC00001, U03MC00003,
67 U03MC00006, U03MC00007, and U03MC00008; and the Collaborative Pediatric Critical Care Research
68 Network (CPCCRN) from cooperative agreements (U10HD050009, U10HD050096, U10HD049981,
69 U10HD049945, U10HD049983, U10HD050012 and U01HD049934).
70

71 At several centres (indicated above), clinical research support was supplemented by the following grants or
72 Cooperative Agreements: UL1TR000003, P30HD040677, P30HD062171, U07MC09174, UL1 RR 024986,
73 and UL1 TR 000433.
74

75 At several centres (indicated above), clinical research support was supplemented by the following grants or
76 Cooperative Agreements: UL1TR000003, P30HD040677, P30HD062171, U07MC09174, UL1 RR 024986,
77 UL1 TR 000433 and U54 HD087011. The National Emergency Medical Services for Children (EMSC) Data
78 Analysis Resource Center Demonstration grant U07MC09174

REFERENCES

1. Moler FW, Silverstein FS, Holubkov R, Slomine BS, Christensen JR, Nadkarni VM, et al. Therapeutic Hypothermia after Out-of-Hospital Cardiac Arrest in Children. *N Engl J Med* 2015; 372:1898-908.
2. Moler FW, Silverstein FS, Holubkov R, Slomine BS, Christensen JR, Nadkarni VM, et al. Therapeutic Hypothermia after In-Hospital Cardiac Arrest in Children. *N Engl J Med*. 2017; 376:318-329.
3. de Caen AR, Berg MD, Chameides L, Gooden CK, Hickey RW, Scott HF, et al. Part 12: Pediatric Advanced Life Support: 2015 American Heart Association Guidelines Update for Cardiopulmonary Resuscitation and Emergency Cardiovascular Care. *Circulation*. 2015; 132(18 Suppl 2):S526-42.
4. Moler FW, Meert K, Donaldson AE, Nadkarni V, Brilli RJ, Dalton HJ, et al. for the Pediatric Emergency Care Applied Research Network. In-hospital versus out-of-hospital pediatric cardiac arrest: A multicenter cohort study. *Critical Care Med* 2009; 37:2259-2267.
5. Kanthimathinathan HK, Scholefield BR. Dilemmas in undertaking research in paediatric intensive care. *Archives of disease in childhood* 2014;99:1043-9.
6. Moler FW, Silverstein FS, Meert KL, Clark AE, Holubkov R, Browning B, et al. Rationale, Timeline, Study Design and Protocol Overview of the Therapeutic Hypothermia After Pediatric Cardiac Arrest Trials. *Pediatr Critical Care Med* 2013; 14:e304-15.

- 611 7. Pemberton VL, Browning B, Webster A, Dean JM, and Moler FW. Therapeutic Hypothermia
612 after Pediatric Cardiac Arrest Trial: The Vanguard Phase Experience and Implications for
613 other Trials. *Pediatr Critical Care Med* 2013; 14:19-26.
- 614
615 8. Holubkov R, Clark AE, Moler FW, Slomine BS, Christensen JR, Silverstein FS, et al. Efficacy
616 outcome selection in the Therapeutic Hypothermia After Pediatric Cardiac Arrest (THAPCA)
617 Trials. *Pediatr Crit Care Med* 2015; 16, 1-10.
- 618
619 9. Sparrow S, Cicchetti D, Balla D: Vineland Adaptive Behavior Scales. 2nd Edition.
620
621 Minneapolis, MN: Pearson Assessment, 2005.
- 622
623 10. Fiser DH. Assessing the outcome of pediatric intensive care. *J Pediatr* 1992; 121:68-74.
624
625
626
627
628 11. Fiser DH, Long N, Roberson PK, Hefley G, Zolten K, and Brodie-Fowler M. Relationship of
629 pediatric overall performance category and pediatric cerebral performance category scores at
630 pediatric intensive care unit discharge with outcome measures collected at hospital discharge
631 and 1- and 6-month follow- up
632
- 633
634 12. van Elteren PH. On the combination of independent two sample tests of Wilcoxon. *Bulletin of*
635 *the Institute of International Statistics* 1960; 37:351–361.
636
- 637
638 13. Meert K, Telford R, Holubkov R, Slomine BS, Christensen JR, Berger J, et al. Cardiac Arrest
639 Characteristics and their Association with Survival and Neurobehavioral Outcome after
640 Pediatric Out-of-Hospital Cardiac Arrest. *Pediatr Crit Care Med*. 2016; 17(12):e543-e550.
641

- 642 14. Meert K, Telford R, Holubkov R, et al. Paediatric In-Hospital Cardiac Arrest: Factors
643 associated with Survival and Neurobehavioural Outcome One Year Later. Resuscitation.
644 2018; 124:96-105.
- 645
646
647
648
649 15. Meert KL, Donaldson A, Nadkarni V, Tieves KS, Schleien CL, Brilli RJ, et al. Multicenter
650 Cohort Study of In-Hospital Pediatric Cardiac Arrest. *Pediatr Crit Care Med* 2009; 10:544-
651 553.
- 652
653
654 16. Moler FW, Donaldson AE, Meert K, Brilli RJ, Nadkarni V, Shaffner DH, et al. for the Pediatric
655 Emergency Care Applied Research Network (PECARN). Multicenter Cohort Study of Out-of-
656 Hospital Pediatric Cardiac Arrest. *Crit Care Med* 2011; 39:141-9.
- 657
658
659 17. Nielsen N, Wetterslev J, Cronberg T, Erlinge D, Gasche Y, Hassager C, et al. Targeted
660 temperature management at 33°C versus 36°C after cardiac arrest. *N Engl J Med* 2013;
661 369:2197-206.
- 662
663
664 18. Deye N, Vincent F, Michel P, Ehrmann S, da Silva D, Piagnerelli M, et al. Changes in cardiac
665 arrest patients' temperature management after the 2013 "TTM" trial: results from an
666 international survey. *Ann Intensive Care* 2016; 6:4.
- 667
668
669 19. Nolan JP, Ferrando P, Soar J, Bengner J, Thomas M, Harrison DA, Perkins GD. Increasing
670 survival after admission to UK critical care units following cardiopulmonary resuscitation. *Crit*
671 *Care* 2016; 20:219.

- 672 20. Bray JE, Stub D, Bloom JE, Segan L, Mitra B, Smith K, et al. Changing target temperature
673 from 33 degrees C to 36 degrees C in the ICU management of out-of-hospital cardiac arrest:
674 A before and after study. *Resuscitation* 2017; 113:39-43.
- 675
676
677 21. Topjian AA, French B, Sutton RM, Conlon T, Nadkarni VM, Moler FW, et al. Association of
678 Post-Resuscitation Hypotension with Survival Outcomes following Pediatric Cardiac Arrest.
679 *Crit Care Med* 2014; 42: 1518-23.
- 680
681
682 22. Topjian AA, Telford R, Holubkov R, Nadkarni VM, Berg RA, Dean JM, Moler FW. The
683 Association of Early Post-Resuscitation Hypotension with Discharge Survival following
684 Targeted Temperature Management for Pediatric Out of Hospital Cardiac Arrest. *JAMA*
685 *Pediatr.* 2018; 172:143-153.
- 686
687
688 23. Jacobshagen C, Pelster T, Pax A, Horn W, Schmidt-Schweda S, Unsold BW, et al. Effects of
689 mild hypothermia on hemodynamics in cardiac arrest survivors and isolated failing human
690 myocardium. *Clin Res Cardiol.* 2010; 99:267-76. .
- 691
692
693 24. Zobel C, Adler C, Kranz A, Seck C, Pfister R, Hellmich M, et al. Mild therapeutic hypothermia
694 in cardiogenic shock syndrome. *Crit Care Med.* 2012; 40:1715-23.
- 695
696
697 25. Dalrymple-Hay MJ, Deakin CD, Knight H, Edwards JC, Keeton B, Salmon AP, Monro JL.
698 Induced hypothermia as salvage treatment for refractory cardiac failure following paediatric
699 cardiac surgery. *Eur J Cardiothorac Surg* 1999; 15: 515–518.
- 700
701
702 26. Anderson KB, Poloyac SM, Kochanek PM, Empey PE. Effect of Hypothermia and Targeted
Temperature Management on Drug Disposition and Response Following Cardiac Arrest: A

703 Comprehensive Review of Preclinical and Clinical Investigations. Ther Hypothermia Temp
704 Manag. 2016; 6:169-179.

705
706 27. Shankaran S, Laptook AR, Pappas A, McDonald SA, Das A, Tyson JE, et al. Effect of Depth
707 and Duration of Cooling on Death or Disability at Age 18 Months Among Neonates With
708 Hypoxic-Ischemic Encephalopathy: A Randomized Clinical Trial. JAMA. 2017 318(1):57-67
709

710
711 28. Laptook AR, Shankaran S, Tyson JE, Munoz B, Bell EF, Goldberg RN, et al. Effect of
712 Therapeutic Hypothermia Initiated After 6 Hours of Age on Death or Disability Among
713 Newborns With Hypoxic-Ischemic Encephalopathy: A Randomized Clinical Trial. JAMA.
714 2017; 318:1550-1560.
715

716
717 29. Kirkegaard H, Soreide E, de Haas I, Pettila V, Taccone FS, Arus U, et al. Targeted
718 Temperature Management for 48 vs 24 Hours and Neurologic Outcome After Out-of-
719 Hospital Cardiac Arrest: A Randomized Clinical Trial. JAMA. 2017; 25;318:341-350.

1
2
3
4
5
6
7
8
9
10
11
12
13
14
15
16
17
18
19
20
21
22
23
24
25
26
27
28
29
30
31
32
33

Therapeutic Hypothermia after Paediatric Cardiac Arrest: Pooled Randomized Controlled Trials

Barnaby R. Scholefield, M.B., B.S., Ph.D., Faye S. Silverstein, M.D., Russell Telford,
M.Stat., Richard Holubkov, Ph.D., Beth S. Slomine, Ph.D., Kathleen L. Meert, M.D.,
James R. Christensen, M.D., Vinay M. Nadkarni M.D., J. Michael Dean, M.D., M.B.A.,
and Frank W. Moler, M.D.,M.S.

From Birmingham Children’s Hospital NHS Foundation Trust, Birmingham, UK (B.R.S.);
University of Michigan, Ann Arbor, MI (F.S.S., F.W.M.); University of Utah, Salt Lake City, UT
(R.T., R.H., J.M.D.); Kennedy Krieger Institute and Johns Hopkins University, Baltimore, MD
(B.S.S., J.R.C.); Wayne State University, Detroit, MI (K.L.M.); Children’s Hospital of
Philadelphia, Philadelphia, PA (V.M.N.).

Corresponding Author:
Dr Barnaby R Scholefield MRCPCH, PhD
Consultant in Paediatric Intensive Care
Birmingham Children’s Hospital
Paediatric Intensive Care Unit
Steelhouse Lane
Birmingham B4 6NH

Manuscript Word Count 2954

ABSTRACT

34
35
36
37
38
39
40
41
42
43
44
45
46
47
48
49
50
51
52
53
54
55
56
57
58
59
60
61

Background: Separate trials to evaluate therapeutic hypothermia after paediatric cardiac arrest for out-of-hospital and in-hospital settings reported no statistically significant differences in survival with favourable neurobehavioral outcome or safety compared to therapeutic normothermia. However, larger sample sizes might detect smaller clinical effects. Our aim was to pool data from identically conducted trials to approximately double the sample size of the individual trials yielding greater statistical power to compare outcomes.

Methods: Combine individual patient data from two clinical trials set in forty-one paediatric intensive care units in USA, Canada and UK. Children aged at least 48 hours up to 18 years old, who remained comatose after resuscitation, were randomized within 6 hours of return of circulation to hypothermia or normothermia (target 33.0°C or 36.8°C). The primary outcome, survival 12 months post-arrest with Vineland Adaptive Behaviour Scales, Second Edition (VABS-II) score at least 70 (scored from 20-160, higher scores reflecting better function, population mean=100, SD=15), was evaluated among patients with pre-arrest scores ≥ 70 .

Results: 624 patients were randomized. Among 517 with pre-arrest VABS-II scores ≥ 70 , the primary outcome did not significantly differ between hypothermia and normothermia groups (28% [75/271] and 26% [63/246], respectively; relative risk, 1.08; 95% confidence interval [CI], 0.81 to 1.42; $p=0.61$). Among 602 evaluable patients, the change in VABS-II score from baseline to 12 months did not differ significantly between groups ($p=0.20$), nor did, proportion of cases with declines no more than 15 points or improvement from baseline [22% (hypothermia) and 21% (normothermia)]. One-year survival did not differ significantly between hypothermia and normothermia groups (44% [138/317] and 38% [113/ 297], respectively; relative risk, 1.15; 95% CI, 0.95 to 1.38; $p=0.15$). Incidences of blood-product use, infection, and serious cardiac arrhythmia adverse events, and 28-day mortality, did not differ between groups.

62 **Conclusions:** Analysis of combined data from two paediatric cardiac arrest targeted
63 temperature management trials including both in-hospital and out-of-hospital cases revealed that
64 hypothermia, as compared with normothermia, did not confer a significant benefit in survival
65 with favourable functional outcome at one year.

66 **Clinical Trial Registration:** THAPCA-OH ClinicalTrials.gov number, NCT00878644. THAPCA-
67 IH ClinicalTrials.gov number, NCT00880087

68
69
70
71

72
73 **Key Words**

74
75 Paediatric Cardiac Arrest;
76 Randomised Controlled Trials;
77 Targeted Temperature Management;
78 Therapeutic hypothermia;
79 Therapeutic Normothermia

INTRODUCTION

Therapeutic hypothermia (hypothermia) as compared to therapeutic normothermia (normothermia) for treatment of comatose children resuscitated after out-of-hospital or in-hospital cardiac arrest did not confer a significant benefit in survival with favourable functional outcome in two independent, parallel trials which utilized identical study protocols(1,2). Current paediatric guidelines recommend either hypothermia or normothermia for target temperature management (TTM)(3). However, since effect sizes tested were in the range of 10 to 20 percent, uncertainty persists regarding optimal temperature management.

In the broad paediatric age range, there are multiple differences between cardiac arrests occurring in the out-of-hospital versus in-hospital setting including patient demographics, underlying pre-existing pathology, aetiology of cardiac arrest, response times and resuscitative skills of the initial responders, and survival rates (4). These differences informed a decision by the THAPCA trials investigators to enrol patients into two separate independent parallel clinical trials (ClinicalTrials.gov NCT00880087 and NCT00878644). However, a major challenge in paediatric cardiac arrest trials is recruitment of sufficiently large sample sizes to detect small clinically significant differences(5). As the underlying mechanism for potential benefit from hypothermia after a hypoxic-ischemic insult is similar in both paediatric populations, the THAPCA trial investigators proposed a secondary analysis of the comparative efficacy and safety of the two temperature interventions in the combined population of out-of-hospital and in-hospital cardiac arrest study cohorts. We report here the results of the pooled data analysis from these two trials which used identical protocols.

METHODOLOGY

Design

The two THAPCA trials were conducted in paediatric intensive care units (ICUs) at 41 enrolling children's hospitals in the United States, Canada, and United Kingdom. The rationale, study design, outcome selection process, protocol summary, 12-month pilot vanguard phase and individual trial outcomes were previously published (6-8). Funding for both trials was from the National Heart, Lung, and Blood Institute (NHLBI). The trial protocols differed only in the inclusion criteria definition of out-of-hospital and in-hospital cardiac arrest(1,2). The institutional review boards of all participating sites and the data-coordinating centre approved the protocol and informed consent documents. Site research coordinators collected all data, and statisticians at the data-coordinating centre (University of Utah) performed all analyses. Site training, data management and site monitoring were described in the Supplementary Appendix of each trial report(1,2). All site investigators vouched for their submitted data. The current pooled study was approved by the THAPCA executive committee prior to analysis of either of the THAPCA trials.

Patient Population

Children ≥ 48 hours and < 18 years old who sustained cardiac arrest, required chest compressions for \geq two minutes, and required mechanical ventilation after return of circulation, met inclusion criteria. Major exclusion criteria were scores of 5 or 6 on the Glasgow Coma Scale motor response subscale (scores range from 1 to 6, lower scores indicate worse function), inability to randomize within 6 hours of return of circulation, active and refractory severe bleeding, pre-existing illness with life expectancy less than 12 months, and lack of commitment to aggressive care. Full exclusion criteria lists were provided in the Supplementary Appendix of the two trial reports(1,2). Written informed consent from a parent or legal guardian was required.

Randomization and Intervention

Eligible patients were randomized to hypothermia or normothermia in a 1:1 ratio using permuted blocks stratified by clinical centre and age (younger than 2 years, 2 to 11 years, and 12 years or older).

31 Targeted temperature management (TTM) was actively maintained for 120 hours in both groups, as
32 previously described(1,2). Participants assigned to hypothermia were pharmacologically paralyzed, sedated
33 and cooled (or warmed if indicated) by surface cooling using a Blanketrol III cooling unit (Cincinnati
34 SubZero, Cincinnati) with mattresses applied anteriorly and posteriorly, to achieve and maintain 33°C
35 (range 32-34°C) core temperature for 48 hours. They were rewarmed over 16 hours or longer to target
36 temperature 36.8°C (range 36-37.5°C) which was actively maintained throughout the remainder of the 120
37 hour intervention period. Patients randomized to normothermia received identical care except core
38 temperature was actively maintained at 36.8°C (range 36-37.5°C) for 120 hours with the cooling unit. Dual
39 central temperature monitoring (oesophageal, rectal, or bladder) and a servo-control mode were used. For
40 patients supported with extracorporeal membrane oxygenation (ECMO) at the time of randomization or
41 later, temperature was controlled with ECMO using a single central temperature monitor. All other aspects
42 of care were determined by clinical teams.

43 **Outcomes**

44
45 The primary outcome was survival with favourable neurobehavioral outcome at 12 month follow-up,
46 defined as an age-corrected standard score ≥ 70 on the Vineland Adaptive Behaviour Scales, Second
47 Edition (VABS-II)(9). The VABS-II has an age-corrected mean score of 100 (standard deviation, 15); higher
48 scores indicate better performance. VABS-II data were collected centrally (Kennedy Krieger Institute,
49 Baltimore, MD) via telephone by a trained interviewer blinded to treatment assignment. As pre-specified in
50 the protocol, enrolled children with pre-arrest VABS-II scores below 70 (based on data from caregiver
51 questionnaire completed at each site within 24 hours of randomization) were excluded only from the
52 primary efficacy analysis. Patients with no baseline VABS-II available were considered eligible for the
53 primary analysis if their baseline Paediatric Overall Performance Category (POPC) and Paediatric Cerebral
54 Performance Category (PCPC) scores were in normal or mild disability categories(10,11). Scores on these
55 scales range from 1 to 6, with lower scores representing less disability; patients with scores of 1 or 2 on
56 both scales were eligible for the primary analysis.

57 Secondary outcomes were change in neurobehavioral function, measured as the difference from
58 pre-arrest baseline to 12 month measurement on the VABS-II (assigning deceased cases and those with

lowest possible VABS-II scores worst possible outcomes, regardless of baseline function) and survival at 12 months. Safety outcomes included the incidences of blood product use, infection, and serious arrhythmias through seven days, and 28-day mortality. The outcome assessment methodology was previously described(1,2).

Statistical Analysis

Individual patient data from both primary trial datasets were combined. Identical definitions, coding, reference units and data collection processes were used for each trial enabling combination without loss of data items. The efficacy analysis for the primary outcome was performed using a pre-specified modified intention-to-treat approach in both trials, excluding children with poor pre-arrest neurobehavioral function. Secondary efficacy outcomes were analysed among all children. Safety analyses were done by treatment received. The primary outcome and 12 month mortality were compared between assigned treatment groups using a Cochran-Mantel-Haenszel test stratified by categorized age and study. Change in VABS-II was analysed using van Elteren's modification of the Mann-Whitney test (12), stratifying by categorized age and study, treating death as the worst outcome and the lowest possible VABS-II score as the second-worst outcome. For this exploratory investigation, significance was declared at the 0.05 for all tests. The probability of survival to one year was evaluated by comparing survival curves between arms using a log-rank test stratified by age category. Univariate analysis of prognostic risk factors for survival independent of treatment group were analysed. Multivariable analysis for prognostic factors for neurobehavioral outcome have been presented previously for each trial(13,14). Analyses were performed using SAS software, version 9.4 (SAS Institute, Inc., Cary, NC).

RESULTS

Characteristics of Study Cohort

Both trials commenced on September 1, 2009 with THAPCA-OH patients enrolled through December 31, 2012 at 36 centres in USA and Canada (2 did not recruit) and THAPCA-IH patients enrolled until February 27, 2015 at 37 sites in the USA, Canada and UK (9 sites did not enrol). Forty-seven centres

in total participated in at least one of the THAPCA trials, with 6 centres not randomizing at least one case. The full CONSORT Diagram is described in Appendix Fig 1. A total of 4146 patients met inclusion criteria and were screened; 1221 had no trial exclusion criteria and were eligible for enrolment; and 624 were enrolled, 321 randomized to hypothermia and 303 to normothermia. Eight patients, who were assigned to hypothermia and three normothermia, did not receive an intervention and one normothermia patient received hypothermia therapy. Five hundred and seventeen patients had VABS-II scores ≥ 70 at baseline, prior to their cardiac arrest, and were eligible for the primary outcome assessment.

The baseline characteristics of the two temperature treatment groups were similar (Table 1). Overall median age was 1.5 years IQR [0.3, 7.1] with 63% male; 71% had one or more pre-existing medical condition most frequent being cardiac, lung or airway, and neurological conditions. Thirty percent (190/624) had a primary cardiac aetiology for their arrest, 9% (57/624) presented with a shockable rhythm (ventricular fibrillation or ventricular tachycardia); and the median estimated duration of chest compressions was 25 minutes IQR [12, 42.5]. Time from return of spontaneous circulation after cardiac arrest to target temperature following randomization for hypothermia group was Median 6.9 hours [Interquartile range (IQR) 5.6 to 8.8] and normothermia group 6.4 hours [IQR 5.3 to 8.4].

Outcomes

The proportion of survivors with the primary outcome VABS-II score ≥ 70 at 12 months was not significantly different between those treated with hypothermia (28%) compared to the normothermia intervention (26%); relative risk 1.08; 95% confidence interval [CI] 0.81 to 1.42; $p=0.61$. In patients included in the primary analysis who died or had a profound (VABS-II <45 or lowest) or moderate to severe disability (VABS-II 45-69), there was also no significant difference in proportion of patients treated with either therapy ($p=0.4$) (Table 2). The secondary outcome of one year change in VABS-II score from baseline score did not differ between groups ($p=0.20$); nor did the proportion in whom the VABS-II score decreased by no more than 15 points (1 standard deviation) or improve differ (hypothermia 22% versus normothermia 21%) (Table 2).

Survival at 12 months for 614 patients, whose outcome status was known, did not differ between groups (hypothermia 44% vs. normothermia 38%; relative risk 1.15; 95% CI 0.95 to 1.38; $p=0.15$) (Table 2).

Survival duration was longer for patients receiving hypothermia; (Figure 1a, $p=0.045$). Sensitivity analysis revealed that this difference was due to the greater number of deaths occurring in the normothermia group between days 0 to 3 (Figure 1b, $p=0.91$; Supplemental Figure 2, $p=0.003$). Specifically, a greater number of deaths occurred on day 0 in the normothermia group (19 versus 5) and the majority (12/19) were due to cardiovascular failure/futility (Table 3). By 12 months, the proportions of deaths by individual causes were similar for patients treated with hypothermia and normothermia. The majority of deaths were attributed to brain death (24.6% versus 24.9%), withdrawal of medical support in view of poor neurological prognosis (35.8 versus 31.4%), or cardiovascular failure/futility (21.2% versus 24.9%) (Table 3).

Prognostic factors for survival and for survival at 12 months with VABS-II ≥ 70 were analysed (Table 4). A cardiac aetiology of cardiac arrest, initial rhythm of ventricular fibrillation or ventricular tachycardia, shorter duration of cardiopulmonary resuscitation, fewer epinephrine doses, and cardiac arrest occurrence during a weekday (versus weekend) and during the day (versus night) were each associated with improved survival, independent of treatment arm. Children whose cardiac arrest occurred in-hospital compared to out-of-hospital were almost twice as likely to survive (OR 1.79 [1.29, 2.49]) and three times as likely to survive with VABS-II ≥ 70 (OR 3.09, 95% CI [2.04, 4.69]) (see Supplemental Table 1).

Safety

Safety outcome data were available for 314 in the hypothermia group and 298 in the normothermia group. The incidences of blood-product use, infection, and serious arrhythmias within seven days did not differ between these groups; nor did 28 day mortality significantly differ [hypothermia, 146/314(46%) versus normothermia, 159/298(53%), $p=0.10$; (see Supplemental Table 2).

DISCUSSION

In this analysis of pooled data from two identically conducted targeted temperature management randomized clinical trials(1,2), there was no significant improvement in survival with favourable neurobehavioral outcome, defined as a VABS-II score ≥ 70 for hypothermia (28%) versus normothermia (26%) groups. Additionally, the best change from baseline outcome, defined as a VABS-II score reduction by no more than 15 points (1 SD) at one year, was similar for hypothermia (22%) and normothermia (21%) groups. Mortality at one year was not statistically different by temperature intervention, although earlier

248 deaths in the first three days of intervention were observed with normothermia. Hypothermia and
249 normothermia groups had comparable safety profiles for blood product utilization, infection, serious cardiac
250 arrhythmia and 28-day mortality.

251 We were able to perform a pooled randomized control trial (RCT) analysis, as opposed to an
252 individual patient data (IPD) meta-analysis, because the RCT protocols were identical with respect to all
253 elements including data definitions, collection and handling procedures, and primary and secondary
254 outcomes. In addition, the trials were initiated concurrently and predominantly at sites that participated in
255 both THAPCA trials, minimizing temporal and site-specific effects between trials. The justification for
256 conducting separate trials stemmed from analysis of a pre-trial planning cohort study that found differences
257 in the aetiology of arrest, initial cardiac arrest rhythm, resuscitation skills of initial responders and survival
258 outcomes between paediatric out-of-hospital and in-hospital cardiac arrest populations(4,15,16). In fact, the
259 substantial difference in proportion of favourable outcomes between the IH and OH cohorts provides
260 support for the decision to conduct separate trials in these two paediatric populations.

261 The current investigation was planned and approved by the trial executive committee prior to
262 completion of either trial. By combining the two trial datasets in the current investigation, we were able to
263 further explore the impact of hypothermia versus normothermia to ameliorate severe hypoxic-ischemic
264 injury following paediatric cardiac arrest in a sample approximately twice the size of the original trials.
265 However, in the pooled population as in the individual trials, there were no statistically significant
266 differences for the primary or two secondary outcomes. The larger sample size gained by combining the
267 two trials leads to more precise confidence intervals for treatment effect than in each individual trial, more
268 conclusively ruling out even moderate benefits of hypothermia.

270 In this study, both treatment arms received 120 hours of active temperature control, to prevent fever
271 (temperature >37.5°C), using surface temperature control devices, pharmacological sedation and
272 neuromuscular blocking medication as required. Our findings are similar to a large adult trial of targeted
273 temperature management (TTM) of 33°C versus 36°C for 36 hours(17), which found no statistically
274 significant difference in outcomes. However, neither the adult nor the paediatric trials compared active
275 TTM with no active temperature control. Recent reports of actual practice temperature management of

adult cardiac arrest describe a change in TTM from 33°C to 36°C(18-20). This practice has been accompanied by trends in less active cooling, greater exposure to fever, and worse clinical outcomes(20). The reports suggest an actual practice 'belief' that fever prevention can be achieved without protocol guided sedation, neuromuscular blockage and servo regulated cooling devices. A large ongoing adult trial of hypothermia (33°C) versus standard care avoiding early fever (>37.8°C) management after cardiac arrest may provide needed information to address this critical question (ClinicalTrials.gov Identifier: NCT02908308).

Although there was no overall difference in survival at 12 months, we found a difference in time to death between hypothermia and normothermia treatment groups (Figure 1a; p=0.045). This difference was explained by more early deaths in the normothermia group during days 0 through 3 (Figure 1c; p=0.003). There are at least two reasons for this observation. First, for day 0, increased deaths due to cardiac failure in the normothermia group was observed, although this trend largely balanced out by day 3 (Table 3). This suggests hypothermia may have been protective or provided additional inotropic effects for the myocardium in the early post arrest period. Early hypotension in the first 6 to 12 hours post cardiac arrest is associated with worse outcome in children comatose after cardiac arrest(21,22). Hypothermia has been reported to reduce inotropic or vasopressor requirement and reduce/rebalance myocardial work to oxygen demand(23). Following adult cardiac arrest, hypothermia increases systemic vascular resistance leading to reduced vasopressor use and lower oxygen consumption(24). In children, hypothermia has been reported as a useful salvage therapy for severe low cardiac output syndrome post congenital heart disease surgery(25). The second identifiable factor associated with hypothermia was lower numbers of deaths through day 3 that were attributable to brain death or to poor neurological prognosis [hypothermia 10% (31/321) versus normothermia 19% (57/303); p=0.001](Table 3). This likely reflected delays in neurological prognostic and brain death assessments in hypothermic patients until at least 24 hours after normothermia was achieved; this common practice stemmed from consideration that sedative drugs administered concurrently with hypothermia could have prolonged clearance and thereby confound clinical assessments(26).

There are limitations with the current study. As described previously, caregivers and research staff in the ICU were aware of treatment assignments of patients, although the primary outcome one year VABS-

04 II interview assessments were performed by individuals who were unaware of treatment group
05 assignment(1,2). We could not rule out the possibility of earlier death or determination by clinical teams of
06 futility in the normothermia group, as discussed above. Although planned prior to the completion of the two
07 THAPCA trials, this pooled analysis was performed after publication of the two primary trials when the
08 results were known to the investigators. A major strength of this study was that pooling of individual patient
09 data analysis was possible due to identical protocols and data definitions. The larger sample size provided
10 greater statistical power to show potential differences in neurobehavioral, mortality and safety outcomes.
11 The inclusion and exclusion criteria selected patients with identical high risk of neurological morbidity and
12 mortality. The final inclusion of 15% (624/4146) of initially screened patients may limit the generalization of
13 the study findings to all paediatric cardiac arrest patients. However, the current pooled study included a
14 more heterogeneous and generalizable population than did either individual trial. Inclusion of patients
15 stratified with less severe injury, excluding the most severe hypoxic ischemic arrests (e.g. sudden infant
16 death syndrome), or selecting a more homogeneous population (e.g. drowning) might allow more focused
17 assessment of TTM efficacy. Unanswered questions remain regarding optimal evaluation of TTM. Future
18 trials should consider different durations and depth of cooling (27-29), earlier onset of TTM, more precise
19 patient stratification based on acute brain injury biomarkers, and adjunctive neuroprotective agents.

20 In conclusion, this larger pooled cohort of patients who were comatose after paediatric cardiac
21 arrest from in-hospital or out-of-hospital locations, therapeutic hypothermia did not confer a statistically
22 significant benefit in survival with a good functional outcome compared to therapeutic normothermia. Both
23 hypothermia and normothermia active temperature interventions had similar severe adverse event profiles.

24
25
26
27 **Acknowledgements:**

28
29 **PERSONNEL, SITES, FUNDING AND ACKNOWLEDGEMENTS**

30
31 **Lead Site - University of Michigan, Ann Arbor, Michigan**

32 **Principal Investigator (PI) (Scientific) - Frank W. Moler, MD, MS**

33
34 **Data Coordinating Center (DCC), University of Utah, Salt Lake City, Utah.**

35 **Principal Investigator DCC - J. Michael Dean, MD, MBA**

36 **Lead Biostatistician - Richard Holubkov, PhD**

37
38 **Outcome Center, Kennedy Krieger Institute, Baltimore, Maryland. Academic affiliation with Johns**
39 **Hopkins University, School of Medicine**

40 James R. Christensen, MD, Beth S. Slomine, PhD

41
42 **Executive Committee**

F. Moler, MD, MS,	PI (Scientific)	University of Michigan
J. M. Dean, MD, MBA	PI (DCC)	University of Utah
R. Holubkov, PhD	Biostatistician	University of Utah
K. Meert, MD	Critical Care	Wayne State University
J. Hutchison, MD	Critical Care	University of Toronto
V. Nadkarni, MD	Critical Care	University of Pennsylvania
S. Shankaran, MD	Neonatology	Wayne State University
F. Silverstein, MD	Neurology	University of Michigan
J. Christensen, MD	Rehabilitation Medicine	Kennedy-Krieger Institute
V. Pemberton, RNC, MS	NHLBI	NIH
C. Nicholson, MD, MS	NICHD	NIH

Sites and research teams - contributors

We acknowledge the contributions of the following sites and individuals who made the THAPCA-OH and THAPCA-IH Trial possible.

Site principal investigators (PI), Sub-investigators (Sub-I), Clinical research coordinators (CRC), Neurologists (Neurologist), Psychologists (Psychologist).

The Children's Hospital of Alabama, Birmingham, AL

J. Alten (PI), S. Borasino (Sub-I), K. Hock (CRC), K. Sewell (CRC), L. Dure (Neurologist),

Phoenix Children's Hospital, Phoenix, AZ

H. J. Dalton (PI), S. Buttram (PI), K. Wai (Sub-I), A. La Bell (CRC), C. Bliss (CRC), M. Lavoie (Psychologist), V. Bordes-Edgar (Psychologist)

Diamond Children's Medical Center, Tucson, AZ

A. Theodorou (PI), K. Typpo (Sub-I), C. Wells (CRC), J. Deschenes (CRC)

Children's Hospital Los Angeles, Los Angeles, CA

C. Newth (PI), S. Rubin (Sub-I), R. Bart (Sub-I), T. Deakers (Sub-I), A. Bhalla (Sub-I), B. Markovitz (Sub-I), J. DiCarlo (Sub-I), P. Ross (Sub-I), C. Herrington (Sub-I), W. Wells (Sub-I), R. Kim (Sub-I), V. Wang (Sub-I), M. Villa (RN), F. Fajardo (CRC), J. Kwok (CRC), J. Serrano (CRC), J. Valentine (CRC), A. Yamakawa (CRC), S. Briones (CRC), S. Cauley (RN), A. Briseno (RN), C. Young (RN), M. Nyc (CRC), T. Rosser (Neurologist), J.I. Gold (Psychologist), R. Engilman (Psychometrician)

Children's Hospital of Orange County, Orange, CA

A. Schwarz (PI), J. Haykawa (Sub-I), O. Vargas-Shiraishi (CRC), A. Galion (Neurologist)

Loma Linda University Children's Hospital, Loma Linda, CA

M. Mathur (PI), J. Newcombe (CRC), A. Pinto (CRC), S. Ashwal (Neurologist), J. Pivonka-Jones (Neuropsychologist)

Mattel Children's Hospital UCLA, Los Angeles, CA

R. Harrison (PI), R. Kelly (Sub-I), A. Madikians (Sub-I), M. Federman (Sub-I), M. Morgan (Sub-I), A. Yamakawa (CRC), M. Nyc (CRC), S. Briones (CRC), M. Villa (RN), J. Kwok (CRC), J. Serrano (CRC), J. Valentine (CRC) T. Rosser (Neurologist), R. Engilman (Psychometrician), J.I. Gold (Psychologist)

University of California, San Francisco Benioff Children's Hospital, San Francisco, CA

P. McQuillen (PI), L. Haeusslein (CRC), H. Glass (Neurologist)

883 **Hospital for Sick Children, Toronto, ON, Canada**

884 J. Hutchison (PI), S. Schwartz (Sub-I), A. Guerguerian (Sub-I), K. Boutis (Sub-I), D. Clark (CRC), J. Van
885 Huyse (CRC), K. Fusco (CRC), K. McBain (CRC), A. Krancevic (CRC), L. Toller (CRC), R. Gaiteiro (CRC),
886 C. Hahn (Neurologist), R. Sananes (Psychologist)

887
888
889 **Children's Hospital Colorado, Aurora, CO**

890 E. Dobyns (PI), J. Albietz (Sub-I), T. Wilson (CRC), B. Wathen (CRC), T. Bernard (Neurologist), J. Dise-
891 Lewis (Psychologist)

892
893 **Children's Healthcare of Atlanta, Atlanta, GA**

894 N. Pham (PI), N. Chanani (Sub-I), K. Walson (Sub-I), J. Sturm (Sub-I), W. Mahle (Sub-I), M. Wolf (Sub-I),
895 C. Stone (CRC), A. Wellons (CRC), S. Meisner (CRC), E. Hoar (CRC), S. Gentry (CRC), L. Smitley (CRC),
896 L. McMaster (CRC), P. Holt (Neurologist), B. Weissman (Neurologist), A. Alexander (Psychologist)

897
898
899 **Riley Hospital for Children, Indianapolis, IN**

900 R. Lutfi (PI), D. Sokol (neurologist), B. McDonald (psychologist)

901
902
903 **Anne and Robert Lurie Children's Hospital of Chicago, Chicago, IL**

904 D. Goodman (PI), E. Powell (Sub-I), S. Shah (CRC),

905
906
907 **Kosair Charities Pediatric Clinical Research Unit, Department of Pediatrics, University of Louisville
908 and the Kosair Children's Hospital, Louisville, KY**

909 M. Porter (PI), J. Sullivan (Sub-I), M. Ruppe (Sub-I), J. Berkenbosch (Sub-I), M. Thomas (CRC), L. Sears
910 (Psychologist)

911
912
913 **Johns Hopkins Children's Center, Baltimore, MD**

914 U. Bhalala (PI), J.K. Lee (PI), S. Kudchadkar (PI), D. Shaffner (Sub-I), M. Shackelford (CRC), P. Melvin
915 (CRC), R. Felling (Neurologist), B. Slomine (Psychologist)

916
917 **Outcome Center, Kennedy Krieger Institute, Baltimore, MD**

918 J.R. Christensen (Site PI), B.S. Slomine (Site Co-Investigator), E. DeMatt (Telephone Interviewer), M.
919 Talley (Telephone Interviewer), C. Rodweller (Telephone Interviewer)

920
921 **Children's Hospital of Michigan, Detroit, MI**

922 K. Meert (PI), S. Heidemann (Sub-I), J. Clark (Sub-I), A. Pawluszka (CRC), M. Lulic (RA), L. Sivaswamy
923 (Neurologist)

124 **C.S. Mott Children’s Hospital, University of Michigan, Ann Arbor, MI**

125 F. Moler (PI), M. Gaies (Sub-I), T. Cornell (Sub-I), M. Weber (CRC), J. Reske (CRC), L. Conlin (CRC), F.
126 Silverstein (Neurologist), M. Carlson (Neurologist), S. Warschausky (Psychologist), T. Behnke (Program
127 Administrator), D. Poszywak (Procurement Subcontract Administrator)

128
129 *“Research reported in this publication was supported by the National Center for Advancing*
130 *Translational Sciences of the National Institutes of Health under Award Numbers UL1 TR 000433 and*
131 *UL1 TR 000433. The content is solely the responsibility of the authors and does not necessarily*
132 *represent the official views of the National Institutes of Health.”*

133
134 **Children’s Hospitals and Clinics of Minnesota, Minneapolis, MN**

135 J. Nowak (PI), H. Ortega (EM Sub-I), D. Milner (EM Sub-I), E. Zielinski (CRC)

136
137 **Washington University, St, Louis, MO**

138 J. Pineda (PI), M. Shoykhet (Sub-I), S. Friess (Sub-I), K. Guilliams (Sub-I), A. Gazit (Sub-I), D. Jaffe (Sub-
139 I), T. Day (CRC), T. Hicks (CRC), L. Barganier (CRC), E. Fish (CRC), L. Toennies (CRC), P. Thurst (CRC),
140 S. Blankenship (CRC), M. Noetzel (Neurologist), K. Guilliams (Neurologist), D. White (Psychologist).

141 *“Research reported in this publication was supported by the Eunice Kennedy Shriver National Institute Of*
142 *Child Health & Human Development of the National Institutes of Health under Award Number U54 HD087011*
143 *to the Intellectual and Developmental Disabilities Research Center at Washington University. The content is*
144 *solely the responsibility of the authors and does not necessarily represent the official views of the National*
145 *Institutes of Health.”*

146
147
148 **Morgan Stanley Children’s Hospital/Columbia University Medical Center New York, NY**

149 C. Schleien (PI), N. Talathoti (CRC), C. Aguilar (CRC), V. Hinton (Psychologist)

150
151
152 **University of Rochester Medical Center/Golisano Children’s Hospital, Rochester, NY**

153 E. W. van der Jagt, (PI), E. R. Taillie (CRC), E. B. Nazarian (Sub-I), L. E. Daugherty (Sub-I), C.O. Davis
154 (Sub-I), H. R. Adams (Psychologist)

155
156 **Duke Children’s Hospital, Durham, NC**

157 G. Ofori-Amanfo (PI), K. Rehder (PI), S. Wrenn (CRC), T. Uhl (CRC), C. Milleson (CRC), E. Smith
158 (Neurologist), K. Gustafson (Psychologist), S. Asbeck (Psychologist), W. Gallentine (Neurologist)

159
160 **Nationwide Children’s Hospital, Columbus, OH**

161 E. Lloyd (PI), M. Hall (Sub-I), N. Khan (Sub-I), J. Frazier (Sub-I), Daniel Cohen (Sub-I), J. Haines (CRC), K.
162 Carter (CRC), L. Bird (CRC), W. Lo (Neurologist)

163
164 **Cincinnati Children’s Hospital, Cincinnati, OH**

165 D. Wheeler (PI), G. Geis (Sub-I), E. Beckman (CRC), S. Banschbach (CRC), K. Krallman (CRC)

166 **Rainbow Babies and Children's Hospital, Cleveland, OH**

167 K. Lidsky (PI), S. Bergant (CRC), A. Browning (CRC), N. Bass (Neurologist), R. Tangen (Psychologist)

168
169
170 **Penn State Children's Hospital, Hershey, PA**

171 NJ. Thomas (PI), A. Shelly (CRC), J. Vallati (CRC), P. Carper (CRC), D. Spear (CRC), A. McMonagle
172 (CRC), J. Stokes (CRC), H. Watts (CRC), W. Trescher (Neurologist), C. Flaherty-Craig (Psychologist)

173
174 **Children's Hospital of Philadelphia, Philadelphia, PA**

175 A. Topjian (PI), R. Berg (Sub-I), V. Nadkarni (Sub-I), A. Zuppa (Sub-I), J. Fitzgerald (Sub-I), P. Meaney
176 (Sub-I), M. DiLiberto (CRC), C. Twelves (CRC), S. McGowan (CRC), M. Sisko (CRC), B. Park (CRC), K.
177 Friedman (Psychologist),

178 *The project described was supported by the National Center for Research Resources and the National*
179 *Center for Advancing Translational Sciences, National Institutes of Health, through Grant UL1TR000003.*
180 *The content is solely the responsibility of the authors and does not necessarily represent the official views*
181 *of the NIH.*

182
183
184
185 **University of Pittsburgh Medical Center, Pittsburgh, PA**

186 E. Fink (PI), R. Hickey (Sub-I), A. Abraham (CRC)

187
188
189 **University of Tennessee Health Science Center, Memphis, TN**

190 S. Shah (PI), K. Anand (Sub-I), B. Moore (CRC), A. Nico West (CRC), M. Grandberry (CRC), N. Shah
191 (Neurologist), A. DeCrow (Psychologist), O. King DeBerry (Psychometrician), A. Huling (Psychometrician)

192
193 **Children's Medical Center Dallas, University of Texas Southwestern Medical School, Dallas, TX**

194 J. Koch (PI), P. Okada (Sub-I), D. Miles (Sub-I), L. Raman (Sub-I), M. Green (Sub-I), E. Golson (CRC), A.
195 Jones (CRC), D. Kelly (CRC), T. Plumb (CRC), K. Van de Bruinhorst (CRC), M. Dowling (Neurologist), P.
196 Stavinoha (Psychologist), A. Hernandez (Psychometrician)

197
198 **University of Texas Health Sciences Center at San Antonio, San Antonio, TX**

199 T. Wu (PI), C. Bauerfeld (Sub-I), M. Rodkey (Sub-I), H. Dibrell (CRC), S. Atkinson (Neurologist), L.
200 O'Donnell (Psychologist), J. Eubanks (Psychologist)

201
202 **Data Coordinating Center (DCC), University of Utah, Salt Lake City, UT**

203 J. M. Dean (PI), R. Holubkov (Biostatistician), B. Browning (Program Director), M. Gildea (Program
204 Director), R. Kuhn (Project Manager), A. Webster (Biostatistician), K. Page (Biostatistician), R. Telford
205 (Biostatistician), L. Herrera (Data Manager), J. Yearley (Director Data Management), J. Burr (CPCCRN

Program Director, B. Marron (Administrative Assistant)

Primary Children's Hospital, Salt Lake City, UT

K.S. Bennett (PI), J. Sweney (PI), R. Lane (Sub-I), J. Lilley (CRC), S. Bjerregaard (CRC), K. Jacobsen (CRC), A. Watson, (CRC), D. Stephens (CRC), M. Delacruz (CRC), K. Cooley (CRC), N. Kwendakwema (CRC), G. Jensen (CRC), R. Moore (CRC), M. Sweney (Neurologist), D. Morita (Neurologist), R. Burr (Psychologist), T. Bennett (Sub-I), J. Henricksen (Sub-I), E. Hirshberg (Sub-I), G. Larsen (Sub-I), M. Schober (Sub-I), R. Dixon (Sub-I), J. Workman (Sub-I)

Seattle Children's Hospital, Seattle, WA

J. Zimmerman (PI), J. McGuire (Sub-I), R. Farris (Sub-I), O. Yanay (Sub-I), J. Reid (Sub-I), L. Smith (Sub-I), S. Hamilton (CRC), C. Greeley (CRC), C. Cheng (CRC), S. Gospe (Neurologist), C. Amlie-Lefond (Neurologist), D. Breiger (Psychologist), A. Paolozzi (Psychometrist)

Children's National Medical Center, Washington, DC

J. Berger (PI), D. Wessel (Sub-I), M. Sharron (Sub-I), S. Basu (Sub-I), A. Wratney (Sub-I), N. Dean (Sub-I), J. Reardon (CRC), E. Tomanio (CRC), J. Carpenter (Neurologist), S. Swanson (Psychologist), T. Brennan (Psychologist), P. Glass (Psychologist), B. Malek (Psychologist), M. Mintz (Psychologist) *Our follow ups were conducted in the Clinical Research Center which is supported by NIH P30HD040677*

Medical College of Wisconsin, Milwaukee, WI

M. T. Meyer (PI), M. Wakeham (Sub-I), S. Hanson (Sub-I), K. Murkowski (CRC)

UK Sites

Alder Hey Children's Hospital, Liverpool, United Kingdom

P. Baines (PI), N. Shetty (Sub-I), A. Wood (CRC), S. Siner (CRC), L. Walsh (CRC)

Birmingham Children's Hospital, Birmingham, United Kingdom

B. Scholefield (Lead UK Study PI), A. Jones (Lead UK Study CRC), T. Cameron (CRC), A. Mohammed Ali (Sub-I), K. Morris (Sub-I), I. Zafurallah (Sub-I), I A. Top (Sub-I), J. Menzies (CRC)

Great Ormond Street Hospital, London, United Kingdom

S. Skellett (PI), T. Thiruchelvam (PI), A.J. Petros (Sub-I), M.J. Peters (Sub-I) D. Goodacre (CRC), A. Jones (CRC),

University Hospital Southampton, Southampton, United Kingdom

J. Pappachan (PI), R. Ensom (CRC), K. Morton (CRC)

National Heart, Lung, and Blood Institute, Bethesda, MD

49 V. Pemberton
50
51
52
53
54

55 **Funding**

56 Primary support for the conduct of the THAPCA-IH and OH Trials was funding from the National Institutes
57 of Health (NIH), National Heart, Lung, and Blood Institute, Bethesda, MD. HL094345 (FWM) and
58 HL094339 (JMD).
59
60

61 Additional support from the following federal planning grants contributed to the planning of the THAPCA
62 Trials: NIH, *Eunice Kennedy Shriver* National Institute of Child Health and Development (NICHD),
63 Bethesda, MD. HD044955 (FWM) and HD050531 (FWM).
64

65 In part support was from the participation of the following research networks: Pediatric Emergency Care
66 Applied Research Network (PECARN) from cooperative agreements U03MC00001, U03MC00003,
67 U03MC00006, U03MC00007, and U03MC00008; and the Collaborative Pediatric Critical Care Research
68 Network (CPCCRN) from cooperative agreements (U10HD050009, U10HD050096, U10HD049981,
69 U10HD049945, U10HD049983, U10HD050012 and U01HD049934).
70

71 At several centres (indicated above), clinical research support was supplemented by the following grants or
72 Cooperative Agreements: UL1TR000003, P30HD040677, P30HD062171, U07MC09174, UL1 RR 024986,
73 and UL1 TR 000433.
74

75 At several centres (indicated above), clinical research support was supplemented by the following grants or
76 Cooperative Agreements: UL1TR000003, P30HD040677, P30HD062171, U07MC09174, UL1 RR 024986,
77 UL1 TR 000433 and U54 HD087011. The National Emergency Medical Services for Children (EMSC) Data
78 Analysis Resource Center Demonstration grant U07MC09174

REFERENCES

1. Moler FW, Silverstein FS, Holubkov R, Slomine BS, Christensen JR, Nadkarni VM, et al. Therapeutic Hypothermia after Out-of-Hospital Cardiac Arrest in Children. *N Engl J Med* 2015; 372:1898-908.
2. Moler FW, Silverstein FS, Holubkov R, Slomine BS, Christensen JR, Nadkarni VM, et al. Therapeutic Hypothermia after In-Hospital Cardiac Arrest in Children. *N Engl J Med*. 2017; 376:318-329.
3. de Caen AR, Berg MD, Chameides L, Gooden CK, Hickey RW, Scott HF, et al. Part 12: Pediatric Advanced Life Support: 2015 American Heart Association Guidelines Update for Cardiopulmonary Resuscitation and Emergency Cardiovascular Care. *Circulation*. 2015; 132(18 Suppl 2):S526-42.
4. Moler FW, Meert K, Donaldson AE, Nadkarni V, Brilli RJ, Dalton HJ, et al. for the Pediatric Emergency Care Applied Research Network. In-hospital versus out-of-hospital pediatric cardiac arrest: A multicenter cohort study. *Critical Care Med* 2009; 37:2259-2267.
5. Kanthimathinathan HK, Scholefield BR. Dilemmas in undertaking research in paediatric intensive care. *Archives of disease in childhood* 2014;99:1043-9.
6. Moler FW, Silverstein FS, Meert KL, Clark AE, Holubkov R, Browning B, et al. Rationale, Timeline, Study Design and Protocol Overview of the Therapeutic Hypothermia After Pediatric Cardiac Arrest Trials. *Pediatr Critical Care Med* 2013; 14:e304-15.

- 611 7. Pemberton VL, Browning B, Webster A, Dean JM, and Moler FW. Therapeutic Hypothermia
612 after Pediatric Cardiac Arrest Trial: The Vanguard Phase Experience and Implications for
613 other Trials. *Pediatr Critical Care Med* 2013; 14:19-26.
- 614
615 8. Holubkov R, Clark AE, Moler FW, Slomine BS, Christensen JR, Silverstein FS, et al. Efficacy
616 outcome selection in the Therapeutic Hypothermia After Pediatric Cardiac Arrest (THAPCA)
617 Trials. *Pediatr Crit Care Med* 2015; 16, 1-10.
- 618
619 9. Sparrow S, Cicchetti D, Balla D: Vineland Adaptive Behavior Scales. 2nd Edition.
620
621 Minneapolis, MN: Pearson Assessment, 2005.
- 622
623 10. Fiser DH. Assessing the outcome of pediatric intensive care. *J Pediatr* 1992; 121:68-74.
624
625
626
627
628 11. Fiser DH, Long N, Roberson PK, Hefley G, Zolten K, and Brodie-Fowler M. Relationship of
629 pediatric overall performance category and pediatric cerebral performance category scores at
630 pediatric intensive care unit discharge with outcome measures collected at hospital discharge
631 and 1- and 6-month follow- up
632
- 633
634 12. van Elteren PH. On the combination of independent two sample tests of Wilcoxon. *Bulletin of*
635 *the Institute of International Statistics* 1960; 37:351–361.
636
- 637
638 13. Meert K, Telford R, Holubkov R, Slomine BS, Christensen JR, Berger J, et al. Cardiac Arrest
639 Characteristics and their Association with Survival and Neurobehavioral Outcome after
640 Pediatric Out-of-Hospital Cardiac Arrest. *Pediatr Crit Care Med*. 2016; 17(12):e543-e550.
641

- 642 14. Meert K, Telford R, Holubkov R, et al. Paediatric In-Hospital Cardiac Arrest: Factors
643 associated with Survival and Neurobehavioural Outcome One Year Later. Resuscitation.
644 2018; 124:96-105.
- 645
646
647
648
649 15. Meert KL, Donaldson A, Nadkarni V, Tieves KS, Schleien CL, Brilli RJ, et al. Multicenter
650 Cohort Study of In-Hospital Pediatric Cardiac Arrest. *Pediatr Crit Care Med* 2009; 10:544-
651 553.
- 652
653
654 16. Moler FW, Donaldson AE, Meert K, Brilli RJ, Nadkarni V, Shaffner DH, et al. for the Pediatric
655 Emergency Care Applied Research Network (PECARN). Multicenter Cohort Study of Out-of-
656 Hospital Pediatric Cardiac Arrest. *Crit Care Med* 2011; 39:141-9.
- 657
658
659 17. Nielsen N, Wetterslev J, Cronberg T, Erlinge D, Gasche Y, Hassager C, et al. Targeted
660 temperature management at 33°C versus 36°C after cardiac arrest. *N Engl J Med* 2013;
661 369:2197-206.
- 662
663
664 18. Deye N, Vincent F, Michel P, Ehrmann S, da Silva D, Piagnerelli M, et al. Changes in cardiac
665 arrest patients' temperature management after the 2013 "TTM" trial: results from an
666 international survey. *Ann Intensive Care* 2016; 6:4.
- 667
668
669 19. Nolan JP, Ferrando P, Soar J, Bengner J, Thomas M, Harrison DA, Perkins GD. Increasing
670 survival after admission to UK critical care units following cardiopulmonary resuscitation. *Crit*
671 *Care* 2016; 20:219.

672 20. Bray JE, Stub D, Bloom JE, Segan L, Mitra B, Smith K, et al. Changing target temperature
673 from 33 degrees C to 36 degrees C in the ICU management of out-of-hospital cardiac arrest:
674 A before and after study. *Resuscitation* 2017; 113:39-43.

675
676
677 21. Topjian AA, French B, Sutton RM, Conlon T, Nadkarni VM, Moler FW, et al. Association of
678 Post-Resuscitation Hypotension with Survival Outcomes following Pediatric Cardiac Arrest.
679 *Crit Care Med* 2014; 42: 1518-23.

680
681
682 22. Topjian AA, Telford R, Holubkov R, Nadkarni VM, Berg RA, Dean JM, Moler FW. The
683 Association of Early Post-Resuscitation Hypotension with Discharge Survival following
684 Targeted Temperature Management for Pediatric Out of Hospital Cardiac Arrest. *JAMA*
685 *Pediatr.* 2018; 172:143-153.

686
687
688 23. Jacobshagen C, Pelster T, Pax A, Horn W, Schmidt-Schweda S, Unsold BW, et al. Effects of
689 mild hypothermia on hemodynamics in cardiac arrest survivors and isolated failing human
690 myocardium. *Clin Res Cardiol.* 2010; 99:267-76. .

691
692
693 24. Zobel C, Adler C, Kranz A, Seck C, Pfister R, Hellmich M, et al. Mild therapeutic hypothermia
694 in cardiogenic shock syndrome. *Crit Care Med.* 2012; 40:1715-23.

695
696
697 25. Dalrymple-Hay MJ, Deakin CD, Knight H, Edwards JC, Keeton B, Salmon AP, Monro JL.
698 Induced hypothermia as salvage treatment for refractory cardiac failure following paediatric
699 cardiac surgery. *Eur J Cardiothorac Surg* 1999; 15: 515–518.

700
701 26. Anderson KB, Poloyac SM, Kochanek PM, Empey PE. Effect of Hypothermia and Targeted
702 Temperature Management on Drug Disposition and Response Following Cardiac Arrest: A

703 Comprehensive Review of Preclinical and Clinical Investigations. Ther Hypothermia Temp
704 Manag. 2016; 6:169-179.

705
706 27. Shankaran S, Laptook AR, Pappas A, McDonald SA, Das A, Tyson JE, et al. Effect of Depth
707 and Duration of Cooling on Death or Disability at Age 18 Months Among Neonates With
708 Hypoxic-Ischemic Encephalopathy: A Randomized Clinical Trial. JAMA. 2017 318(1):57-67
709

710
711 28. Laptook AR, Shankaran S, Tyson JE, Munoz B, Bell EF, Goldberg RN, et al. Effect of
712 Therapeutic Hypothermia Initiated After 6 Hours of Age on Death or Disability Among
713 Newborns With Hypoxic-Ischemic Encephalopathy: A Randomized Clinical Trial. JAMA.
714 2017; 318:1550-1560.
715

716 29. Kirkegaard H, Soreide E, de Haas I, Pettila V, Taccone FS, Arus U, et al. Targeted
717 Temperature Management for 48 vs 24 Hours and Neurologic Outcome After Out-of-
718 Hospital Cardiac Arrest: A Randomized Clinical Trial. JAMA. 2017; 25;318:341-350.
719

Table 1 - Demographics by Treatment

	Treatment Assigned		P-value
	Hypothermia (N = 321)	Normothermia (N = 303)	
Age at Randomization (years)			0.072 ¹
N	321	303	
Median [Q1 - Q3]	1.7 [0.4 - 7.6]	1.2 [0.3 - 6.5]	
Age Group at Randomization			0.509 ²
< 2 years	173 (53.9%)	177 (58.4%)	
2-11 years	96 (29.9%)	80 (26.4%)	
>= 12 years	52 (16.2%)	46 (15.2%)	
Male	199 (62.0%)	193 (63.7%)	0.660 ²
Pre-existing Conditions			
No pre-existing condition	94 (29.3%)	88 (29.0%)	0.947 ²
Lung or airway disease	87 (27.1%)	89 (29.4%)	0.529 ²
Neurologic condition	87 (27.1%)	67 (22.1%)	0.148 ²
Gastrointestinal disorder	69 (21.5%)	72 (23.8%)	0.499 ²
Prenatal condition	59 (18.4%)	64 (21.1%)	0.389 ²
Congenital heart disease	111 (34.6%)	112 (37.0%)	0.535 ²
Other pre-existing condition	46 (14.3%)	53 (17.5%)	0.280 ²
Primary aetiology of cardiac arrest			0.663 ²
Cardiac	99 (30.8%)	91 (30.0%)	
Respiratory	156 (48.6%)	157 (51.8%)	
Other/Unknown	66 (20.6%)	55 (18.2%)	
Initial rhythm noted by EMS or hospital			0.903 ²
Asystole	99 (30.8%)	97 (32.0%)	
Bradycardia	104 (32.4%)	104 (34.3%)	
Pulseless electrical activity (PEA)	58 (18.1%)	54 (17.8%)	
Ventricular fibrillation or tachycardia	31 (9.7%)	26 (8.6%)	

Table 1 - Demographics by Treatment

	Treatment Assigned		P-value
	Hypothermia (N = 321)	Normothermia (N = 303)	
Unknown	29 (9.0%)	22 (7.3%)	
Estimated duration of chest compressions			0.133 ¹
N	312	300	
Median [Q1 - Q3]	24.5 [10.5 - 40.0]	25.5 [12.5 - 48.0]	
Time of ROSC			0.961 ²
Day	222 (69.2%)	209 (69.0%)	
Night	99 (30.8%)	94 (31.0%)	
Day of ROSC			0.698 ²
Weekday	248 (77.3%)	238 (78.5%)	
Weekend	73 (22.7%)	65 (21.5%)	
Total known adrenaline (epinephrine) doses³			0.337 ¹
N	320	302	
Median [Q1 - Q3]	3.0 [2.0 - 6.0]	4.0 [2.0 - 7.0]	
ECMO⁴	87 (27.1%)	97 (32.0%)	0.179 ²

¹ P-value is based on the Wilcoxon rank-sum test.

² Chi-squared test of no association.

³ Administered by EMS and at hospital.

⁴ Started at or before treatment and not stopped before treatment initiation.

Table 2. Primary and Secondary Outcomes.*

	Treatment Assigned		Risk Difference	Relative Risk	P Value
	Hypothermia	Normothermia			
Primary Outcome					
Survival at 12 months with VABS ≥ 70	75/271 (28%)	63/246 (26%)	2.1 (-5.6, 9.7)	1.08 (0.81, 1.42)	0.61†
One year status (detailed)					0.40‡
Death	152/271 (56%)	155/246 (63%)			
Profound disability (VABS < 45 or lowest possible)§	18/271 (7%)	11/246 (4%)			
Moderate to severe disability (VABS 45-69)¶	26/271 (10%)	17/246 (7%)			
Good functional status (VABS ≥ 70)∥	75/271 (28%)	63/246 (26%)			
Secondary Outcomes					
Survival at 12 months	138/317 (44%)	113/297 (38%)	5.5 (-2.3, 13.2)	1.15 (0.95, 1.38)	0.15†
One year change from baseline					0.20**
Death	179/315 (57%)	184/287 (64%)			
Lowest possible VABS score	7/315 (2%)	1/287 (0%)			
VABS decreased > 30 points	31/315 (10%)	23/287 (8%)			
VABS decreased 16-30 points	28/315 (9%)	18/287 (6%)			
VABS decreased no more than 15 points or improved	70/315 (22%)	61/287 (21%)			

* The primary outcome was evaluated in patients with a baseline Vineland Adaptive Behaviour Scales, Second Edition (VABS-II), score of 70 or higher at 12 months (scores on the VABS-II range from 20 to 160, with higher scores indicating

better function). The secondary outcomes were evaluated in all patients with available data. Denominators reported are for patients whose outcomes were known. CI denotes confidence interval.

† The P value was calculated by means of the Cochran-Mantel-Haenszel test, with adjustment for age category and study.

‡ The P value was calculated by means of the Mann-Whitney test on the basis of the 1-yr continuous VABS-II score, stratified according to age category and study. Deceased patients and those with the lowest possible VABS-II score were assigned ranks of -2000 and -1000, respectively (i.e., the worst possible scores).

§ Profound disability was defined as a VABS-II score of less than 45 or the lowest possible score.

¶ Moderate-to-severe disability was defined as a VABS-II score of 45 to 69.

|| Good functional status was defined as a VABS-II score of 70 or higher.

** The P value was calculated by means of the Mann-Whitney test on the basis of the continuous change in VABS-II score, stratified according to age category and study. Deceased patients and those with the lowest possible VABS-II score were assigned ranks of -2000 and -1000, respectively (i.e., the worst possible scores).

Table 3. Cause of Death by Study Day.

Hypothermia

Cause of Death	Study Day							Overall (N = 179)
	0 (N = 5)	1 (N = 30)	2 (N = 17)	3 (N = 14)	4 (N = 21)	5 (N = 9)	> 5 (N = 83)	
Cardiovascular failure/futility	4 (80.0%)	8 (26.7%)	7 (41.2%)	2 (14.3%)	1 (4.8%)	0 (0.0%)	16 (19.3%)	38 (21.2%)
Brain death declared	0 (0.0%)	3 (10.0%)	2 (11.8%)	4 (28.6%)	12 (57.1%)	6 (66.7%)	17 (20.5%)	44 (24.6%)
Withdrawal for poor neurologic prognosis	0 (0.0%)	11 (36.7%)	5 (29.4%)	6 (42.9%)	8 (38.1%)	3 (33.3%)	31 (37.3%)	64 (35.8%)
Respiratory failure/futility	0 (0.0%)	1 (3.3%)	1 (5.9%)	0 (0.0%)	0 (0.0%)	0 (0.0%)	3 (3.6%)	5 (2.8%)
Withdrawal for other system failure	1 (20.0%)	3 (10.0%)	2 (11.8%)	2 (14.3%)	0 (0.0%)	0 (0.0%)	6 (7.2%)	14 (7.8%)
Other/Unknown	0 (0.0%)	4 (13.3%)	0 (0.0%)	0 (0.0%)	0 (0.0%)	0 (0.0%)	10 (12.0%)	14 (7.8%)

Normothermia

Cause of Death	Study Day							Overall (N = 185)
	0 (N = 19)	1 (N = 29)	2 (N = 22)	3 (N = 22)	4 (N = 18)	5 (N = 10)	> 5 (N = 65)	
Cardiovascular failure/futility	12 (63.2%)	6 (20.7%)	2 (9.1%)	3 (13.6%)	1 (5.6%)	2 (20.0%)	20 (30.8%)	46 (24.9%)
Brain death declared	0 (0.0%)	11 (37.9%)	11 (50.0%)	8 (36.4%)	7 (38.9%)	5 (50.0%)	4 (6.2%)	46 (24.9%)
Withdrawal for poor neurologic prognosis	3 (15.8%)	9 (31.0%)	6 (27.3%)	9 (40.9%)	9 (50.0%)	2 (20.0%)	20 (30.8%)	58 (31.4%)
Respiratory failure/futility	0 (0.0%)	1 (3.4%)	0 (0.0%)	1 (4.5%)	0 (0.0%)	0 (0.0%)	8 (12.3%)	10 (5.4%)
Withdrawal for other system failure	2 (10.5%)	2 (6.9%)	2 (9.1%)	0 (0.0%)	0 (0.0%)	0 (0.0%)	6 (9.2%)	12 (6.5%)
Other/Unknown	2 (10.5%)	0 (0.0%)	1 (4.5%)	1 (4.5%)	1 (5.6%)	1 (10.0%)	7 (10.8%)	13 (7.0%)

Figure Legends

Figure 1a. Probability of survival to one year following cardiac arrest, according to assigned treatment.

The two lines represent Kaplan-Meier survival rates from 0 to 365 days after cardiac arrest for patients in each study arm ($p=0.045$ for a log-rank test, stratified by age category and study, comparing survival distributions between treatment arms). Numbers above the x-axis represent numbers of patients at risk (alive and followed) in each study arm at each 30-day interval.

Figure 1b. Probability of survival past day 3 to one year following cardiac arrest, according to assigned treatment.

The two lines represent Kaplan-Meier survival rates from 4 to 365 days after cardiac arrest for patients in each study arm ($p=0.912$ for a log-rank test, stratified by age category and study, comparing survival distributions between treatment arms). Numbers above the x-axis represent numbers of patients at risk (alive and followed) in each study arm at each 30-day interval.

Figure 1a. Kaplan-Meier estimates of survival probability

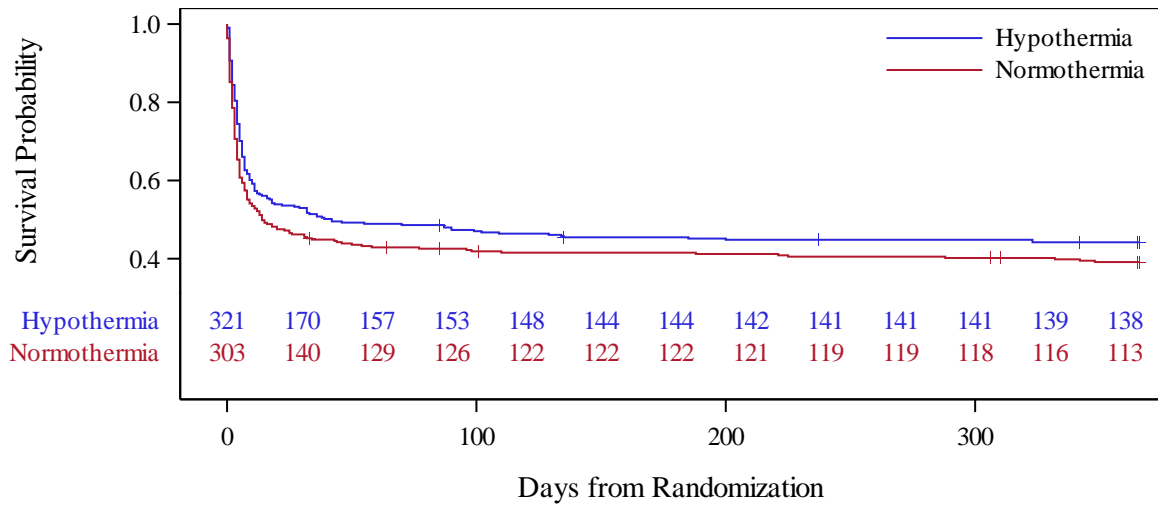
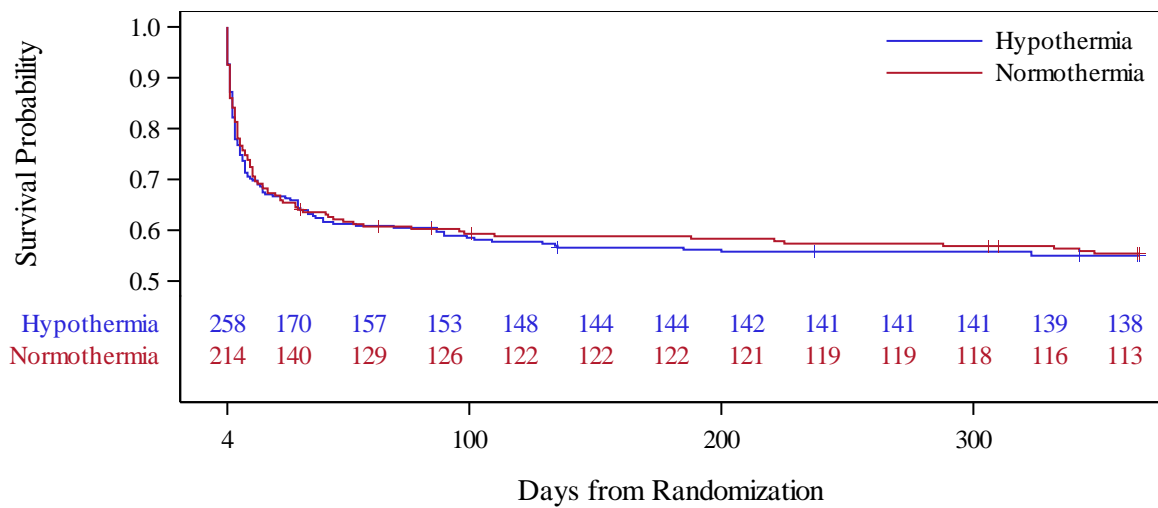


Figure 1b. Kaplan-Meier estimates of survival probability (Subjects surviving past day 3)



Supplemental files for online publication only

[Click here to download Supplemental files for online publication only: THAPCA Pooled RCT Supplemental Figures and Tables R](#)

Declaration of Conflict of Interest Statement:

Barnaby R. Scholefield receives *Relevant* and *Significant* National institute for Health Research (UK) Clinician Scientist Fellowship funding

Faye S. Silverstein, receives *Relevant* and *Significant* NIH/NHLBI funding

Russell Telford: None declared

Richard Holubkov receives *Relevant* and *Significant* NIH/NHLBI funding

Beth S. Slomine *Relevant* and *Significant* NIH/NHLBI funding

Kathleen L. Meert: None declared

James R. Christensen None declared

Vinay M. Nadkarni: None declared

J. Michael Dean, receives *Relevant* and *Significant* NIH/NHLBI funding

Frank W. Moler, receives *Relevant* and *Significant* NIH/NHLBI funding