

Stochastic Ranking Algorithm for Many-Objective Optimization Based on Multiple Indicators

Li, Bingdong ; Tang, Ke; Li, Jinlong; Yao, Xin

DOI:

[10.1109/TEVC.2016.2549267](https://doi.org/10.1109/TEVC.2016.2549267)

License:

Creative Commons: Attribution (CC BY)

Document Version

Publisher's PDF, also known as Version of record

Citation for published version (Harvard):

Li, B, Tang, K, Li, J & Yao, X 2016, 'Stochastic Ranking Algorithm for Many-Objective Optimization Based on Multiple Indicators', *IEEE Transactions on Evolutionary Computation*, vol. 20, no. 6, pp. 924 - 938.
<https://doi.org/10.1109/TEVC.2016.2549267>

[Link to publication on Research at Birmingham portal](#)

General rights

Unless a licence is specified above, all rights (including copyright and moral rights) in this document are retained by the authors and/or the copyright holders. The express permission of the copyright holder must be obtained for any use of this material other than for purposes permitted by law.

- Users may freely distribute the URL that is used to identify this publication.
- Users may download and/or print one copy of the publication from the University of Birmingham research portal for the purpose of private study or non-commercial research.
- User may use extracts from the document in line with the concept of 'fair dealing' under the Copyright, Designs and Patents Act 1988 (?)
- Users may not further distribute the material nor use it for the purposes of commercial gain.

Where a licence is displayed above, please note the terms and conditions of the licence govern your use of this document.

When citing, please reference the published version.

Take down policy

While the University of Birmingham exercises care and attention in making items available there are rare occasions when an item has been uploaded in error or has been deemed to be commercially or otherwise sensitive.

If you believe that this is the case for this document, please contact UBIRA@lists.bham.ac.uk providing details and we will remove access to the work immediately and investigate.

Stochastic Ranking Algorithm for Many-Objective Optimization Based on Multiple Indicators

Bingdong Li, *Student Member, IEEE*, Ke Tang, *Senior Member, IEEE*,
Jinlong Li, *Member, IEEE*, and Xin Yao, *Fellow, IEEE*

Abstract—Traditional multiobjective evolutionary algorithms face a great challenge when dealing with many objectives. This is due to a high proportion of nondominated solutions in the population and low selection pressure toward the Pareto front. In order to tackle this issue, a series of indicator-based algorithms have been proposed to guide the search process toward the Pareto front. However, a single indicator might be biased and lead the population to converge to a subregion of the Pareto front. In this paper, a multi-indicator-based algorithm is proposed for many-objective optimization problems. The proposed algorithm, namely stochastic ranking-based multi-indicator Algorithm (SRA), adopts the stochastic ranking technique to balance the search biases of different indicators. Empirical studies on a large number (39 in total) of problem instances from two well-defined benchmark sets with 5, 10, and 15 objectives demonstrate that SRA performs well in terms of inverted generational distance and hypervolume metrics when compared with state-of-the-art algorithms. Empirical studies also reveal that, in the case a problem requires the algorithm to have strong convergence ability, the performance of SRA can be further improved by incorporating a direction-based archive to store well-converged solutions and maintain diversity.

Index Terms—Archive method, many-objective evolutionary algorithm, multi-indicator, multiobjective optimization, stochastic ranking.

I. INTRODUCTION

THE GOAL of optimizing a multiobjective optimization problem (MOP) is to obtain an optimal tradeoff front

Manuscript received October 25, 2015; revised February 3, 2016; accepted March 17, 2016. Date of publication March 31, 2016; date of current version November 23, 2016. This work was supported in part by the National Natural Science Foundation of China under Grant 61329302, Grant 61175065, and Grant 61573328; in part by the Program for New Century Excellent Talents in University under Grant NCET-12-0512; in part by the Engineering and Physical Sciences Research Council under Grant EP/K001523/1 and Grant EP/I010297/1; and in part by the Royal Society Newton Advanced Fellowship under Grant NA150123. The work of X. Yao was supported by the Royal Society Wolfson Research Merit Award. (*Corresponding author: Ke Tang.*)

B. Li, K. Tang, and J. Li are with University of Science and Technology of China (USTC)—Birmingham Joint Research Institute in Intelligent Computation and Its Applications, School of Computer Science and Technology, USTC, Hefei 230027, China (e-mail: lbingd17@mail.ustc.edu.cn; ketang@ustc.edu.cn; jlli@ustc.edu.cn).

X. Yao is with University of Science and Technology of China (USTC)—Birmingham Joint Research Institute in Intelligent Computation and Its Applications, School of Computer Science and Technology, USTC, Hefei 230027, China, and also with the Center of Excellence for Research in Computational Intelligence and Applications, School of Computer Science, University of Birmingham, Birmingham B15 2TT, U.K. (e-mail: x.yao@cs.bham.ac.uk).

Color versions of one or more of the figures in this paper are available online at <http://ieeexplore.ieee.org>.

Digital Object Identifier 10.1109/TEVC.2016.2549267

[Pareto front (PF)] of different objectives. MOPs with more than three objectives are often called many-objective optimization problems (MaOPs) [1]. MaOPs appear in various real-world applications such as car controller optimization [2], software engineering [3], and water supply portfolio planning [4].

In recent decades, many multiobjective evolutionary algorithms (MOEAs) have been proposed. However, traditional dominance-based MOEAs, such as NSGA-II [5] and SPEA2 [6], have been shown to be inefficient when dealing with MaOPs [7], [8]. With an increasing number of objectives in the problem, the proportion of nondominated solutions is quite large and the traditional Pareto dominance loses its efficiency to push the population toward the PF. This is referred to as dominance resistance phenomenon [9]. When the dominance-based (primary) selection criterion fails to differentiate the nondominated solutions, the diversity-based (secondary) criterion plays a vital role during environmental selection. Thus, the final population may spread all over the objective space but fails to converge to the PF.

In order to overcome this obstacle, researchers have proposed various many-objective evolutionary algorithms (MaOEAs) in the literature. Based on the key ideas used, these methods can be categorized into the six classes [10].

- 1) Relaxed dominance-based algorithms try to alleviate the inefficiency of dominance by enlarging the dominated area of a solution. A series of approaches have been proposed, e.g., ϵ -dominance [11], controlling dominance area of solution [12], and L -dominance [13]. Under these relaxed definitions, a solution has a higher chance to be dominated by other solutions and thus the selection pressure toward the PF is increased. One representative relaxed dominance-based algorithm is the GrEA [14] which uses grid-based convergence and diversity measurements to compare nondominated solutions. A difficult issue of these methods is to determine the extent of relaxation of the new dominance definitions for different problems and dynamically tuning method has been studied [15].
- 2) Diversity-based methods try to improve the performance through more advanced diversity maintaining strategy. In general, by considering convergence to a certain amount, these methods aim to reduce the detrimental impact of diversity maintenance on the selection pressure. For example, diversity management mechanism DM1 [16] deactivates the diversity promotion mechanism once the

population is excessively diverse. Shift-based density estimation (SDE) strategy [17] shifts the position of solutions according to their convergence information during the density estimation and it shows competitive performance when integrated into SPEA2 [17], [18]. However, one might wonder what is the cost of these strategies with the gain of selection pressure (for example, SPEA2+SDE tends to concentrate on the central area of PF when tackling DTLZ1 problems [19]).

- 3) The aggregation-based methods use a series of scalarizing functions to decompose the MaOPs into a set of single objective subproblems. Various scalarizing functions and weight vector generation methods have been studied in [20] and [21]. MOEA/D [20] is a popular aggregation-based method. The main advantage of MOEA/D over other aggregation-based methods lies in that it incorporates the neighborhood of subproblems to improve the efficiency of both generating new solutions and selecting solutions for the next generation. However, it maintains relatively poor diversity for high-dimensional problems and more advanced solution-vector mapping method has been proposed [22]. Besides, although the contour lines of different scalarizing functions have been studied [23], [24], more in-depth studies on the scalarizing functions for different problems are still needed.
- 4) Indicator-based methods take advantage of indicator values to guide the search process when optimizing an MaOP. Various indicators have been used to design MaOEAs, such as hypervolume [25], generational distance (GD) [26], and inverted generational distance (IGD) [27], and so on. The final solution set depends mainly on the characteristics of the indicators incorporated. However, hypervolume-based algorithms (evolutionary multi-objective optimization algorithms based S metric selection [28] and HypE [29]) are usually more time-consuming compared with other algorithms. Evaluating GD and IGD values needs a reference set to serve as the PF. Since the true PF is usually unknown *a priori*, maintaining the reference set is also a nontrivial task.
- 5) Preference-based algorithms focus on the region of interest according to the user's preference information. In order to select solutions, a series of preference models have been studied in the literature such as goal specification, preference polyhedron, objective weighting, and so on [30], yet how to choose the appropriate preference model may be a problem-dependent task. An interesting algorithm, namely preference-inspired coevolutionary algorithms, model preference information as a set of solutions which coevolve along with the population [31], [32].
- 6) More recently, hybrid MaOEAs that combine two or more of the abovementioned techniques have also been proposed. Two representative algorithms are NSGA-III [21] and Two_Arch2 [33]. NSGA-III is based on Pareto and aggregation where the Pareto dominance-based nondomination sorting is used to drive the population toward the PF and a set of reference

directions are used to maintain the diversity of the population.¹ Two_Arch2 maintains two archives, i.e., the convergence archive (CA) and the diversity archive (DA), to aim at convergence and diversity, respectively. The additive indicator $I_{\epsilon+}$ is used to update CA while Pareto dominance and a L_p -norm based nearest neighbor distance is used to update DA. However, Two_Arch2 might fail to preserve the extreme points of the PF, while NSGA-III may struggle to converge to the PF on multimodal problems, as can be seen from our experimental results.

In order to tackle an MaOP, the indicator-based algorithms seem to be quite straightforward since the final solution set is evaluated according to the indicators. However, a single indicator might bias the search toward a certain subregion. For example, indicator-based evolutionary algorithm (IBEA), an algorithm based on the $I_{\epsilon+}$ indicator, struggles to maintain the diversity for solution set when dealing with many-objective problems [33]. This phenomenon indicates that the $I_{\epsilon+}$ indicator prefers convergence to diversity. Other indicators (e.g., the crowding distance [5], I_{SDE} [17], etc.) may prefer diverse solutions instead. Since indicators may have different biases, which might complement each other, using multiple indicators rather than a single one for environmental selection may result in an even better algorithm. Motivated by this, a multi-indicator algorithm is proposed in this paper. In particular, the key question to develop such an algorithm is how to carry out environmental selection based on multiple indicators that are inconsistent with each other. We employ the stochastic ranking technique, which was originally designed to balance the fitness and constraint violation in constrained optimization, to address this difficulty and show that the resultant algorithm, namely stochastic ranking-based multi-indicator algorithm (SRA), can achieve competitive performance on a large variety of test problems.

The main contributions of this paper are summarized as follows.

- 1) We introduce a new technique for balancing the influence of different indicators in a many-objective optimization algorithm. The balance is achieved through a ranking procedure based on the stochastic bubble-sort. With a tunable parameter, it enables an algorithm designer to make an appropriate tradeoff between different indicators.²
- 2) In order to deal with problems that require the algorithm to have strong convergence ability, a direction-based archive (DBA) is incorporated into SRA to store well-converged solutions and maintain diversity.
- 3) Comprehensive experimental studies covering both DTLZ and WFG problems reveal that different benchmark sets favor different algorithms and show the necessity of using both test suites to evaluate the performance of many-objective evolutionary algorithms.

¹The perpendicular distance in NSGA-III is a component of PBI and NSGA-III can be seen as a variant of MOEA/D; see the website of MOEA/D <http://dces.essex.ac.uk/staff/zhang/webofmoead.htm>.

²In this paper, we focus on algorithms based on two indicators due to space limits. Yet the ranking procedure can be easily generalized into cases with three or more indicators by specifying probability for all the indicators.

The rest of this paper is organized as follows. Section II introduces the preliminary background of many-objective optimization. Section III presents the details of the SRA. Section IV illustrates SRA with archive. Section V is devoted to experimental setup. Section VI discusses the empirical results. Section VII concludes this paper and indicates some future directions.

II. PRELIMINARY BACKGROUND

A. MultiObjective Optimization Problem

Generally, an MOP can be stated as follows [34]:

$$\begin{aligned} & \text{minimize } \mathbf{F}(\mathbf{x}) = (f_1(\mathbf{x}), f_2(\mathbf{x}), \dots, f_m(\mathbf{x}))^T \\ & \text{subject to } \mathbf{x} \in \Omega \end{aligned} \quad (1)$$

where $\mathbf{x} = (x_1, x_2, \dots, x_n)$ is the decision vector, Ω is the (nonempty) decision space, $\mathbf{F} : \Omega \rightarrow \Lambda$ is the objective function vector, Λ is the objective space. Here, we refer to MOPs as problems whose number of objectives m is larger than 1 and MaOPs as problems whose m is larger than 3.

B. Pareto Dominance

Given two solutions $\mathbf{x}, \mathbf{y} \in \Omega_f$, \mathbf{x} is said to dominate \mathbf{y} (denoted as $\mathbf{x} < \mathbf{y}$) if and only if $\forall i \in \{1, 2, \dots, m\}, f_i(\mathbf{x}) \leq f_i(\mathbf{y})$ and $\exists j \in \{1, 2, \dots, m\}, f_j(\mathbf{x}) < f_j(\mathbf{y})$ [35].

C. Pareto Optimal Solution

A solution $\mathbf{x}^* \in \Omega_f$ is said to be Pareto optimal if no other solution $\mathbf{x} \in \Omega_f$ can dominate it.

D. Pareto Set

The solution set consists of all the Pareto optimal solutions is called the Pareto Set: $\text{PS} = \{\mathbf{x} \in \Omega_f | \forall \mathbf{y} \in \Omega_f, \mathbf{y} \not< \mathbf{x}\}$.

E. Pareto Front

The corresponding objective vector set of the Pareto Set is called the PF.

F. Approximation Set

An approximation set $A \subset \Lambda$ is defined as a solution set where no member of A dominates or is equal to any other member in A [36].

The goal of optimizing an MaOP is to obtain an approximation set A considering the following two subgoals [37].

- 1) *Convergence*: A are as close as possible to the PF.
- 2) *Diversity*: A spreads as diversely as possible.

G. Quality Indicator

An k -ary quality indicator I is a function $I : \Gamma^k \rightarrow \mathbb{R}$, which assigns each vector (A_1, A_2, \dots, A_k) of k approximation sets a real value $I(A_1, A_2, \dots, A_k)$ [36]. Quality indicators quantify the goodness of a solution set in terms of convergence, diversity, or both.

Algorithm 1: Main Loop of SRA

input : an MaOP, population size N
output: an approximation set A_{out}

```

1 Randomly generate the initial population  $P_0$ 
2 Evaluate all the individuals in  $P_0$ 
3 Set  $Q_0 \leftarrow \emptyset, t \leftarrow 0$ 
4 while  $t < \text{MaxGen}$  do
5   for each  $i \in N$  do
6     Create an offspring  $q_i$  with randomly chosen  $p_1, p_2 \in P_t$ 
7     Set  $Q_t \leftarrow Q_t \cup \{q_i\}$ 
8   end
9   Evaluate the offspring population  $Q_t$ 
10  Obtain the combined population:  $U_t \leftarrow P_t \cup Q_t$ 
11  Compute the indicator values  $I_1(\mathbf{u}_i)$  and  $I_2(\mathbf{u}_i)$  for all  $\mathbf{u}_i \in U_t$ 
12  Set the probability parameter  $p_c$ 
13  Stochastic ranking based environmental selection:  $P_{t+1} \leftarrow \text{SRES}(U_t, p_c)$ 
14   $t \leftarrow t + 1$ 
15 end
16 Return the non-dominated solutions of  $A_{t+1}$  as  $A_{out}$ 

```

III. PROPOSED SRA

A. Overview

In the proposed SRA, a stochastic ranking procedure is employed to carry out environmental selection based on multiple indicators. The framework of SRA is described in Algorithm 1. First, N solutions are randomly created as the initial population. At each generation, randomly picked parent individuals are used to create offspring. After fitness evaluation, the offspring population is merged with the parent population. Then the indicator values of the merged population are computed. After that, the stochastic ranking based procedure is implemented for environmental selection. When the iterative optimization is finished, the nondominated solutions in the final population is returned as the output.

B. Indicators

Computationally, Algorithm 1 can accommodate any computable indicators (i.e., the I_1 and I_2 in line 11). However, since we expect to acquire additional benefits by involving two indicators, intuitively they should show different biases, e.g., one favors convergence and the other prefers diversity. Hence, the indicators $I_{\epsilon+}$ [38] and I_{SDE} [17] are chosen for SRA since: 1) these two indicators have been shown to be effective in terms of convergence or diversity and 2) they do not involve the nontrivial task of setting appropriate reference set/point.

The additive indicator $I_{\epsilon+}$ and the corresponding $I_1(\mathbf{x})$ for comparing solutions are defined as

$$I_{\epsilon+}(\mathbf{x}, \mathbf{y}) = \min_{\epsilon} (f_i(\mathbf{x}) - \epsilon \leq f_i(\mathbf{y}), i \in \{1, \dots, m\}) \quad (2)$$

$$I_1(\mathbf{x}) = \sum_{\mathbf{y} \in P, \mathbf{y} \neq \mathbf{x}} -e^{-I_{\epsilon+}(\mathbf{x}, \mathbf{y})/0.05} \quad (3)$$

where P is the population³ that includes \mathbf{x} and \mathbf{y} .

³Note that the population P discussed in this section corresponds to the combined population U_t in SRA.

The I_{SDE} and the corresponding $I_2(\mathbf{x})$ for comparing solutions are defined as

$$I_{SDE}(\mathbf{x}, \mathbf{y}) = \sqrt{\sum_{1 \leq i \leq m} sd(f_i(\mathbf{x}), f_i(\mathbf{y}))^2} \quad (4)$$

$$I_2(\mathbf{x}) = \min_{\mathbf{y} \in P, \mathbf{y} \text{ precedes } \mathbf{x}} \{I_{SDE}(\mathbf{x}, \mathbf{y})\} \quad (5)$$

where

$$sd(f_i(\mathbf{x}), f_i(\mathbf{y})) = \begin{cases} f_i(\mathbf{y}) - f_i(\mathbf{x}) & \text{if } f_i(\mathbf{x}) < f_i(\mathbf{y}) \\ 0 & \text{otherwise.} \end{cases} \quad (6)$$

Here, \mathbf{y} precedes \mathbf{x} means that the original index of the position of \mathbf{y} in the population P is smaller than \mathbf{x} . It should be noted that (5) is different from the original definition in [17], which computes (4) for all pairs of \mathbf{x} and \mathbf{y} . The reason is that adopting multiple indicators introducing additional computational costs, i.e., two indicators (instead of one) need to be computed. The computational overhead can be reduced by using (5) instead of the original definition. Meanwhile, this modification did not deteriorate the performance of SRA according to our preliminary experimental studies.

C. Stochastic Ranking-Based Environmental Selection

Suppose N individuals need to be selected from $2N$ individuals. Intuitively, the environmental selection can be viewed as comprising two steps. That is, the $2N$ individuals are first sorted according to a criterion, and then the best N are selected. The sorting process is trivial when only one indicator is employed, since it only takes the indicator value of each individual as the input. In case of multiple indicators, however, sorting becomes much more complicated, because different indicators might assign different ranks to the same individual. In fact, this is likely to happen especially when the indicators favor different aspect of multiobjective optimization, i.e., convergence and diversity. The sorting result in such a case should represent good balance between two indicators that produce inconsistent ranks to the same population. This scenario is similar to that commonly encountered in constrained (single objective) optimization, in which one may get quite different results by sorting the population according to fitness and constraint violation. Therefore, SRA utilizes the stochastic ranking technique [39], an approach that has been shown to be effective for the sorting problem in constrained optimization, to address the sorting problem in multiple indicator MaOEAs.

To be specific, stochastic ranking is applied once the indicator values of all individuals are obtained (line 13 in Algorithm 1). As shown in Algorithm 2, stochastic ranking is a stochastic bubble-sort algorithm. It ranks the individuals by sweeping the whole population (of size $2N$) for N times.⁴ During each sweep, all adjacent individuals are compared according to values of a randomly chosen indicator. The sweep stops if there is no change in the rank ordering. The tradeoff of different indicators is controlled by the parameter $p_c \in (0, 1)$. After the ranking procedure terminates, the top N individuals will be selected.

⁴Population size $N = |U_t|/2$.

Algorithm 2: Stochastic Ranking Based Environmental Selection

input : combined population $U_t = \{\mathbf{u}_1, \dots, \mathbf{u}_{2N}\}$,
parameter p_c

output: sorted population P_{t+1}

```

1 for sweepCounter ← 1 to |Ut|/2 do
2   for j ← 1 to |Ut| - 1 do
3     Sample  $u \in U(0, 1)$ 
4     if  $u < p_c$  then
5       if  $I_1(\mathbf{u}_j)$  is worse than  $I_1(\mathbf{u}_{j+1})$  then
6         swap( $\mathbf{u}_j, \mathbf{u}_{j+1}$ )
7       end
8     else
9       if  $I_2(\mathbf{u}_j)$  is worse than  $I_2(\mathbf{u}_{j+1})$  then
10        swap( $\mathbf{u}_j, \mathbf{u}_{j+1}$ )
11      end
12    end
13  end
14  if no swap done then
15    break;
16  end
17 end
18 Copy top |Ut|/2 solutions of  $U_t$  to  $P_{t+1}$ 

```

D. Computational Complexity Analysis

Given an MaOP with m objectives and a population size of N , the time complexity of each generation of SRA is as follows: first, the time complexity of creating a new population (lines 5–8 in Algorithm 1) is $O(N)$. Second, the fitness evaluation and population merging steps (lines 9 and 10 in Algorithm 1) need $O(mN)$ and $O(N)$, respectively. Third, the time complexity of computing $I_1(\mathbf{u}_i)$ and $I_2(\mathbf{u}_i)$ for all $\mathbf{u}_i \in U_t$ is $O(mN^2)$. Fourth, the stochastic ranking-based environmental selection procedure (line 13 in Algorithm 1) takes $O(N^2)$ time complexity. In summary, the computational complexity is $O(mN^2)$, which is at the same level as the complexity of NSGA-III and Two_Arch2 [33].

IV. SRA WITH ARCHIVE

The SRA presented in Section III randomly chooses two individuals from a population to generate an offspring. Meanwhile, some other schemes, such as maintaining an external archive have shown their advantages in a number of existing MaOEAs [33], [40]. Thus, a variant of SRA, namely SRA with Archive (SRA2) is further developed by incorporating a DBA into SRA. Here, the search directions are defined by a set of weight vectors,⁵ which are set according to the method in [21]. Given a set of weight vectors, SRA2 first generates $2N$ individuals, N of which are randomly assigned to each weight vector and are treated as the initial archive. The other N individuals are adopted as the initial population. In each generation, each member in the archive is recombined

⁵Although using the weight vector-based mechanism can obtain a perfect distribution of solutions on some MOPs, it may fail on some discontinuous MOPs, such as DTLZ7 [41].

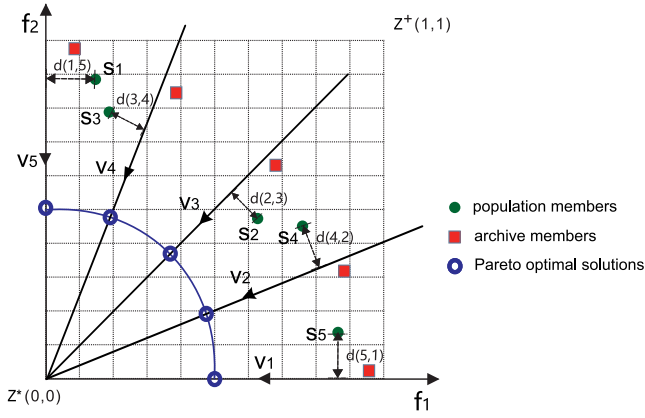


Fig. 1. Associate solutions to weight vectors (denoted as V_1, \dots, V_5). All the solutions (denoted as S_1, \dots, S_5) that survive the stochastic ranking-based multi-indicator environmental selection in the previous step are associated with the weight vector with the minimum perpendicular distance.

with an individual randomly picked from the current population to generate an offspring. Then, the archive is updated after the environmental selection step using the new population.

The pseudocode of the archive update procedure is shown in Algorithm 3. For weight vector-based methods, two key aspects are the association step and the replacement step. In SRA2, an individual is associated to the weight vector with the minimum perpendicular distance according to [21] and [22]. An illustration of the association step is shown in Fig. 1. After that, an individual can replace at most n_r archive members corresponding to the neighbors of the associated weight vector, as long as it obtains better fitness value than the archive members along the directions [20]. The penalty-based boundary intersection (PBI) [20] fitness function, defined as a weighted sum of the perpendicular distance and the projection length, is adopted in SRA2 to compare an individual with the archive member.

In terms of computational complexity, the main additional cost induced by the use of archive lies in the archive updating phase. For each of the N solutions, the complexity of associating the solution to a weight vector and of updating the archive members is $O(Nm)$ and $O(Tm)$, respectively. Since $T \ll N$, the complexity for the archive updating phase is $O(mN^2)$. In other words, SRA and SRA2 have the same computational complexity, while the latter is more time-consuming than the former in practice.

V. EXPERIMENTAL SETUP

A. Test Problems

In order to evaluate the performance of our algorithm, we have tested it on two well-defined benchmark problem sets: DTLZ [42] and WFG [43] test suites.⁶ Specifically, DTLZ1-DTLZ4 and WFG1-WFG9 with 5, 10, and 15 objectives are used for empirical studies. The parameter settings and the characteristics of the problems are listed in Table I.

⁶For DTLZ1, we use the normalized form as in [20] and the PF is the hyper-plane satisfying that $\sum_{i=1}^m f_i = 1$.

Algorithm 3: Archive Update Procedure

input : an archive $A = \{a_1, a_2, \dots, a_N\}$,
a population $P = \{s_1, s_2, \dots, s_N\}$,
a weight vector set $V = \{v_1, v_2, \dots, v_N\}$,
a neighborhood matrix $B = \{b_{i,j}\}_{N \times T}$,
max replacement number n_r

output: Updated Archive A

```

1 Normalize the archive and population
2 for each  $s_i \in P$  do
3   for each  $v_j \in V$  do
4     compute the length of the perpendicular line
       segment of  $s_i$  and  $v_j$ 
5   end
6   associate  $s_i$  with the weight vector  $v_{j^*}$  with shortest
     perpendicular distance
7   Set  $counter \leftarrow 0$ 
8   Generate a random permutation  $perm$  of  $[1, \dots, T]$ 
9   for  $t = 1; t \leq T; t \leftarrow t + 1$  do
10     $k = b_{j^*, perm[t]} \in B$ 
11    if  $fit(s_i, v_k) < fit(a_k, v_k)$  then
12      set  $a_k \leftarrow s_i$ ,  $counter \leftarrow counter + 1$ 
13    end
14    if  $counter \geq n_r$  then
15      break
16    end
17  end
18 end

```

B. Performance Metrics

In the experiment, we use two indicators, the hypervolume indicator (HV) [25] and IGD [27]. Both of them are widely used in [21] and [33].

IGD [27] is a distance-based metric, which is defined as

$$IGD(A, PF) = \frac{1}{|PF|} \left(\sum_{i=1}^{|PF|} \text{distance}(\mathbf{p}_i, A)^p \right)^{\frac{1}{p}} \quad (7)$$

where $A = \{\mathbf{a}_1, \mathbf{a}_2, \dots, \mathbf{a}_{|A|}\}$ is an approximation set of the PF, $PF' = \{\mathbf{p}_1, \mathbf{p}_2, \dots, \mathbf{p}_{|PF'|}\}$ is a subset of the true PF. The distance between a solution and a solution set is defined as the minimum distance between the solution and all solution set members. Here p is set to 1. Since the PF is known *a priori* for both DTLZ1-4 and WFG1-9 problems, we sample 500 000 points on the Pareto surface as PF' according to [33]. The IGD metric can measure the convergence and diversity of an solution set simultaneously. The smaller the IGD value is, the better the solution set is.

The HV measures the volume of solutions that is dominated by the approximation set [25], [28]. Given a reference point \mathbf{z}^\dagger and an approximation set A , $HV(\mathbf{z}^\dagger, A)$ is defined as

$$HV(\mathbf{z}^\dagger, A) = L \left(\left\{ \bigcup_{\mathbf{a} \in A} \{\mathbf{b} \in \Lambda \mid \mathbf{a} < \mathbf{b} < \mathbf{z}^\dagger\} \right\} \right) \quad (8)$$

TABLE I
PARAMETER SETTINGS AND CHARACTERISTICS OF THE TEST PROBLEMS

Problems	m	n	Parameter	Geometry	Modality	Separability
DTLZ1	5,10,15	$m + k - 1$	$k = 5$	linear	multi-modal	Nonseparable
DTLZ2	5,10,15	$m + k - 1$	$k = 10$	Concave	uni-modal	Nonseparable
DTLZ3	5,10,15	$m + k - 1$	$k = 10$	Concave	multi-modal	Nonseparable
DTLZ4	5,10,15	$m + k - 1$	$k = 10$	Concave	uni-modal	Nonseparable
WFG1	5,10,15	$k + l$	$k = 2 * (m - 1), l = 20$	Convex,Mixed	uni-modal	Separable
WFG2	5,10,15	$k + l$	$k = 2 * (m - 1), l = 20$	Convex,Disconnected	Mixed	Nonseparable
WFG3	5,10,15	$k + l$	$k = 2 * (m - 1), l = 20$	linear	uni-modal	Nonseparable
WFG4	5,10,15	$k + l$	$k = 2 * (m - 1), l = 20$	Concave	multi-modal	Separable
WFG5	5,10,15	$k + l$	$k = 2 * (m - 1), l = 20$	Concave	deceptive	Separable
WFG6	5,10,15	$k + l$	$k = 2 * (m - 1), l = 20$	Concave	uni-modal	Nonseparable
WFG7	5,10,15	$k + l$	$k = 2 * (m - 1), l = 20$	Concave	uni-modal	Separable
WFG8	5,10,15	$k + l$	$k = 2 * (m - 1), l = 20$	Concave	uni-modal	Nonseparable
WFG9	5,10,15	$k + l$	$k = 2 * (m - 1), l = 20$	Concave	multi-modal,deceptive	Nonseparable

TABLE II
POPULATION SIZE SETTINGS OF THE REPRESENTATIVE ALGORITHMS

m	No. of Vectors	NSGA-III	MOEA/D	SRA and SRA2
5	210	212	210	210
10	275	276	275	275
15	135	136	135	135

where L is the Lebesgue measure, \mathbf{z}^{\dagger} is the reference point in the objective space. It measures both convergence and diversity of an approximation set. HV is the only indicator which is Pareto-compliant [29]. A higher HV value indicates a larger volume is dominated by the approximation set, thus corresponding to better performance. In our experiments, the output population is first normalized using the $1.1 \times \mathbf{z}^{\text{nadir}}$. After that, the hypervolume is computed using $(1.0, \dots, 1.0)^T$ as the reference point. In order to estimate the true HV value, we use a method from [44] according to [45].

C. State-of-the-Art Algorithms

In order to verify the performance of the proposed algorithm, the following state-of-the-art many-objective evolutionary algorithms (implemented in the jMetal framework [46] on a 32-core 2.60 GHz Intel Xeon CPU with 64 GB RAM) are considered.

- 1) *HypE* [29]: HypE is an indicator-based many-objective algorithm. It uses Monte Carlo sampling to approximate the exact Hypervolume values. This enables the user to make a tradeoff between accuracy and computation time. Moreover, solutions are compared with the expected hypervolume loss for environmental selection as well as mating selection, aiming to maximizing the hypervolume of the solution set.
- 2) *AGE-II* [47]: AGE-II is an approximation indicator-based algorithm [48]. It adopts ϵ -dominance to store all the ϵ -nondominated solutions into an archive.⁷ During environmental selection, the solution set that approximates the archive best is kept for the next generation.

⁷Thus, it can also be categorized into the relaxed dominance-based algorithms.

TABLE III
PERFORMANCE COMPARISON OF SRA AND SRA2 IN TERMS OF THE AVERAGE IGD AND HV VALUES ON DTLZ PROBLEMS. THE BETTER AVERAGE VALUES OF THE TWO ALGORITHMS FOR EACH INSTANCE ARE HIGHLIGHTED IN GRAY

IGD	m	SRA	SRA2
DTLZ1	5	1.22e-01	1.13e-01
DTLZ1	10	2.29e-01	2.27e-01
DTLZ1	15	4.40e-01	5.15e-01
<hr/>			
DTLZ2	5	1.94e-01	1.82e-01
DTLZ2	10	4.10e-01	4.30e-01
DTLZ2	15	6.06e-01	6.14e-01
<hr/>			
DTLZ3	5	3.50e-01	2.55e-01
DTLZ3	10	5.58e-01	4.63e-01
DTLZ3	15	8.32e-01	8.18e-01
<hr/>			
DTLZ4	5	2.15e-01	1.84e-01
DTLZ4	10	4.22e-01	4.42e-01
DTLZ4	15	6.17e-01	6.18e-01
<hr/>			
HV	m	SRA	SRA2
DTLZ1	5	9.69e-01	9.74e-01
DTLZ1	10	9.97e-01	9.82e-01
DTLZ1	15	9.86e-01	8.41e-01
<hr/>			
DTLZ2	5	8.01e-01	8.05e-01
DTLZ2	10	9.25e-01	9.57e-01
DTLZ2	15	8.96e-01	9.76e-01
<hr/>			
DTLZ3	5	7.05e-01	7.65e-01
DTLZ3	10	8.80e-01	9.45e-01
DTLZ3	15	8.69e-01	6.87e-01
<hr/>			
DTLZ4	5	8.05e-01	8.08e-01
DTLZ4	10	9.56e-01	9.69e-01
DTLZ4	15	9.43e-01	9.88e-01

- 3) *NSGA-III* [21]: NSGA-III use a set of weight vectors to indicate different search directions. In order to maintain diversity, it associate solutions to weight vectors and compares niche counts of different weight vectors. The algorithm has been shown to be highly competitive according to [21] and [33].
- 4) *Two_Arch2* [33]: Two_Arch2 is a newly proposed algorithm that uses two archives to take care of convergence and diversity, respectively. The CA is updated according to the additive indicator $I_{\epsilon+}$, while the DA is updated according to the L_p -norm-based nearest neighbor distance.

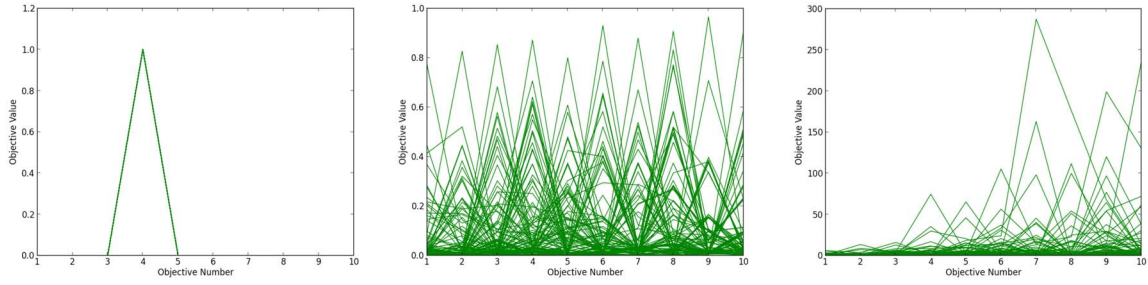


Fig. 2. Solution set obtained by three variants of stochastic ranking with the parameter p_c set to 0 (left), 0.5 (middle), and 1 (right), respectively, (corresponding to $I_{\epsilon+}$ only, $I_{\epsilon+}$ and I_{SDE} , I_{SDE} only scenarios) on 10-objective DTLZ1 problem.

TABLE IV
PERFORMANCE COMPARISON OF SRA AND SRA2 WITH STATE-OF-THE-ART ALGORITHMS IN TERMS OF THE AVERAGE IGD VALUES ON DTLZ PROBLEMS. THE BEST AND SECOND BEST AVERAGE IGD VALUES AMONG ALL THE ALGORITHMS FOR EACH INSTANCE ARE HIGHLIGHTED IN GRAY AND LIGHT GRAY

Problem	m	HypE	AGE-II	NSGA-III	Two_Arch2	SPEA2+SDE	MOEA/D	IBEA	SRA	SRA2
DTLZ1	5	$1.88e-01$	$9.54e-02$	$1.11e-01$	$1.01e-01$	$9.65e-02$	$1.09e-01$	$4.87e-01$	$1.22e-01$	$1.13e-01$
DTLZ1	10	$4.84e-01$	$2.97e-01$	$2.15e-01$	$2.48e-01$	$1.88e-01$	$1.95e-01$	$7.11e-01$	$2.29e-01$	$2.27e-01$
DTLZ1	15	$5.50e-01$	$3.68e-01$	$3.72e-01$	$3.87e-01$	$2.68e-01$	$2.93e-01$	$8.77e-01$	$4.40e-01$	$5.15e-01$
DTLZ2	5	$2.77e-01$	$1.61e-01$	$1.84e-01$	$1.81e-01$	$1.85e-01$	$1.83e-01$	$2.93e-01$	$1.94e-01$	$1.82e-01$
DTLZ2	10	$6.66e-01$	$3.88e-01$	$4.29e-01$	$4.38e-01$	$4.11e-01$	$4.15e-01$	$6.24e-01$	$4.10e-01$	$4.30e-01$
DTLZ2	15	$7.62e-01$	$6.31e-01$	$6.20e-01$	$6.67e-01$	$6.03e-01$	$6.12e-01$	$9.01e-01$	$6.06e-01$	$6.14e-01$
DTLZ3	5	$6.43e+00$	$3.15e-01$	$2.00e+00$	$2.77e-01$	$2.32e-01$	$2.27e-01$	$6.11e-01$	$3.50e-01$	$2.55e-01$
DTLZ3	10	$1.01e+01$	$5.17e-01$	$4.73e+00$	$2.05e+00$	$5.11e-01$	$4.30e-01$	$8.29e-01$	$5.58e-01$	$4.63e-01$
DTLZ3	15	$1.28e+00$	$6.37e-01$	$3.22e+00$	$1.12e+00$	$6.66e-01$	$3.17e+00$	$1.11e+00$	$8.32e-01$	$8.18e-01$
DTLZ4	5	$2.79e-01$	$1.64e-01$	$1.84e-01$	$1.68e-01$	$2.07e-01$	$1.83e-01$	$3.40e-01$	$2.15e-01$	$1.84e-01$
DTLZ4	10	$6.55e-01$	$4.07e-01$	$4.32e-01$	$5.75e-01$	$4.17e-01$	$4.24e-01$	$5.24e-01$	$4.22e-01$	$4.42e-01$
DTLZ4	15	$7.80e-01$	$6.17e-01$	$6.15e-01$	$6.84e-01$	$6.14e-01$	$6.61e-01$	$6.81e-01$	$6.17e-01$	$6.18e-01$

- 5) *SPEA2+SDE* [17]: SPEA2+SDE adopts the SDE into SPEA2 to improve the convergence of the algorithm on many-objective optimization problem. Numerical studies have demonstrated the efficiency of the algorithm.
- 6) *MOEA/D* [20]: MOEA/D is a weight vector-based algorithm that decomposes an MaOP into a set of single-objective subproblems. The convergence of the algorithm is improved by the neighborhood definition and the diversity is maintained by the search directions represented by the weight vectors.
- 7) *IBEA* [38]: IBEA is based on the $I_{\epsilon+}$ indicator. It has been shown that it may converge quickly but leads to a solution set with poor diversity, which indicates that it might cause biased search on some problems.

D. Parameter Settings

The general and algorithm-specific parameter settings are summarized as follows.

- 1) *Population Size*: The population size of representative algorithms is shown in Table II. For the other algorithms, the population size is the same with that of NSGA-III.
- 2) *Reproduction Operators*: The simulated binary crossover operator and polynomial mutation are used for reproducing offspring solutions [49]. The mutation probability is set to 0.1, the crossover probability is set to 1.0. The mutation distribution index η_m and the crossover distribution index η_c are set to $= 15.0$ [33].
- 3) The neighborhood size is set to 20 and the maximum replacement number is set to 2 for MOEA/D and SRA2.

- 4) The ϵ in AGE-II is set to 0.1 [45].
- 5) *Termination Criterion*: All algorithms are allowed for a maximum of 90 000 fitness evaluations for all the problem instances.
- 6) *Number of Runs*: For all the problems instances, all the algorithms are repeated 20 times independently.
- 7) *Statistical Test*: In order to test the difference of algorithms, the Wilcoxon rank sum test [50] (0.05 significance level) is applied for analysis.
- 8) The value of parameter p_c [p_c lies in $(0, 1)$] needs to be set for SRA and SRA2. This parameter is an inherent parameter of stochastic ranking and controls the balance between indicators. The optimal value for p_c is problem-dependent and may vary as the search progresses. To make a fair comparison, p_c was not fine-tuned for each test instance. Instead, preliminary experiment was conducted on DTLZ1 with 5, 10, and 15 objectives. The performance of SRA and SRA2 with p_c setting to 0.3 to 0.7 with step size 0.1 were compared. It was found that $p_c \in [0.4, 0.6]$ works well for both algorithms. Hence, p_c was set to a random number generated in this range at each generation of SRA and SRA2.

VI. RESULTS AND DISCUSSIONS

A. Bias of Indicators

In this experiment, we choose the ten objective DTLZ1 problem for investigation [33]. In order to show the search

TABLE V
PERFORMANCE COMPARISON OF SRA AND SRA2 WITH STATE-OF-THE-ART ALGORITHMS IN TERMS OF THE AVERAGE HV VALUES ON DTLZ PROBLEMS. THE BEST AND SECOND BEST AVERAGE HV VALUES AMONG ALL THE ALGORITHMS FOR EACH INSTANCE ARE HIGHLIGHTED IN GRAY AND LIGHT GRAY

Problem	m	HypE	AGE-II	NSGA-III	Two_Arch2	SPEA2+SDE	MOEA/D	IBEA	SRA	SRA2
DTLZ1	5	9.55e-01	7.23e-01	9.78e-01	9.62e-01	9.61e-01	9.79e-01	6.84e-01	9.69e-01	9.74e-01
DTLZ1	10	9.06e-01	5.94e-01	9.98e-01	9.48e-01	9.87e-01	9.93e-01	6.33e-01	9.97e-01	9.82e-01
DTLZ1	15	8.92e-01	7.11e-01	9.97e-01	8.58e-01	9.82e-01	9.77e-01	3.79e-01	9.86e-01	8.41e-01
DTLZ2	5	7.66e-01	7.03e-01	8.06e-01	7.94e-01	8.10e-01	8.10e-01	7.91e-01	8.01e-01	8.05e-01
DTLZ2	10	8.00e-01	7.74e-01	9.57e-01	7.60e-01	9.59e-01	9.69e-01	8.34e-01	9.25e-01	9.57e-01
DTLZ2	15	8.09e-01	2.67e-01	9.87e-01	6.50e-01	9.84e-01	9.89e-01	6.86e-01	8.96e-01	9.76e-01
DTLZ3	5	3.55e-03	6.68e-01	7.15e-02	6.43e-01	7.36e-01	7.41e-01	4.11e-01	7.05e-01	7.65e-01
DTLZ3	10	0.00e+00	8.24e-01	0.00e+00	5.76e-02	8.48e-01	9.38e-01	3.74e-01	8.80e-01	9.45e-01
DTLZ3	15	4.78e-01	8.03e-01	5.65e-02	1.71e-01	9.60e-01	7.75e-01	2.11e-01	8.69e-01	6.87e-01
DTLZ4	5	7.66e-01	7.48e-01	8.11e-01	7.81e-01	7.96e-01	8.11e-01	7.62e-01	8.05e-01	8.08e-01
DTLZ4	10	8.44e-01	9.23e-01	9.66e-01	8.51e-01	9.59e-01	9.69e-01	9.56e-01	9.56e-01	9.69e-01
DTLZ4	15	8.46e-01	3.94e-01	9.91e-01	8.00e-01	9.83e-01	9.81e-01	9.65e-01	9.43e-01	9.88e-01

TABLE VI
PERFORMANCE COMPARISON OF SRA AND SRA2 WITH STATE-OF-THE-ART ALGORITHMS IN TERMS OF THE AVERAGE IGD VALUES ON WFG PROBLEMS. THE BEST AND SECOND BEST AVERAGE IGD VALUES AMONG ALL THE ALGORITHMS FOR EACH INSTANCE ARE HIGHLIGHTED IN GRAY AND LIGHT GRAY

Problem	m	HypE	AGE-II	NSGA-III	Two_Arch2	SPEA2+SDE	MOEA/D	IBEA	SRA	SRA2
WFG1	5	7.03e-01	6.98e-01	7.24e-01	6.02e-01	6.08e-01	5.76e-01	4.87e-01	5.86e-01	5.69e-01
WFG1	10	9.79e-01	8.20e-01	8.62e-01	7.51e-01	7.21e-01	7.14e-01	6.40e-01	6.97e-01	7.01e-01
WFG1	15	1.32e+00	1.07e+00	1.02e+00	1.01e+00	1.00e+00	1.01e+00	9.41e-01	9.84e-01	9.47e-01
WFG2	5	3.66e-01	2.50e-01	1.15e-01	1.06e-01	2.21e-01	5.55e-01	9.95e-02	1.97e-01	2.92e-01
WFG2	10	7.60e-01	5.38e-01	5.53e-01	1.72e-01	3.89e-01	7.85e-01	1.59e-01	3.64e-01	5.19e-01
WFG2	15	9.53e-01	8.91e-01	5.28e-01	2.23e-01	8.66e-01	9.69e-01	4.44e-01	6.60e-01	6.68e-01
WFG3	5	1.52e-01	8.89e-02	9.21e-02	1.23e-01	8.18e-02	8.10e-02	8.10e-01	7.27e-02	7.77e-02
WFG3	10d	3.10e-01	1.52e-01	1.75e-01	2.06e-01	1.38e-01	2.97e-01	9.04e-01	1.19e-01	2.92e-01
WFG3	15d	4.39e-01	2.20e-01	2.27e-01	2.31e-01	1.97e-01	4.92e-01	9.12e-01	1.88e-01	3.44e-01
WFG4	5	1.94e-01	1.89e-01	1.77e-01	1.72e-01	1.75e-01	3.28e-01	5.23e-01	1.86e-01	1.76e-01
WFG4	10d	6.13e-01	5.33e-01	4.10e-01	4.91e-01	4.02e-01	1.07e+00	9.55e-01	3.99e-01	3.97e-01
WFG4	15d	9.78e-01	8.04e-01	5.89e-01	7.49e-01	5.85e-01	1.27e+00	1.10e+00	5.83e-01	6.26e-01
WFG5	5	1.90e-01	1.93e-01	1.73e-01	1.93e-01	1.72e-01	2.99e-01	2.26e-01	1.84e-01	1.74e-01
WFG5	10	5.04e-01	5.20e-01	4.08e-01	4.31e-01	3.93e-01	9.95e-01	1.16e+00	3.96e-01	3.99e-01
WFG5	15	9.47e-01	7.60e-01	5.79e-01	6.17e-01	6.18e-01	1.19e+00	1.24e+00	6.23e-01	5.81e-01
WFG6	5	1.97e-01	1.91e-01	1.79e-01	1.67e-01	1.83e-01	3.54e-01	2.83e-01	1.88e-01	1.79e-01
WFG6	10	4.57e-01	5.27e-01	4.13e-01	4.37e-01	4.02e-01	1.08e+00	7.89e-01	3.98e-01	4.08e-01
WFG6	15	9.14e-01	7.82e-01	5.98e-01	6.43e-01	6.49e-01	1.31e+00	1.10e+00	6.16e-01	5.85e-01
WFG7	5	1.97e-01	1.91e-01	1.77e-01	2.13e-01	1.75e-01	3.69e-01	2.50e-01	1.85e-01	1.75e-01
WFG7	10d	4.93e-01	5.20e-01	4.16e-01	4.40e-01	3.99e-01	1.06e+00	8.98e-01	3.97e-01	4.03e-01
WFG7	15d	9.73e-01	8.01e-01	5.96e-01	6.30e-01	5.85e-01	1.30e+00	1.12e+00	5.82e-01	6.06e-01
WFG8	5	2.19e-01	1.99e-01	2.03e-01	2.49e-01	1.97e-01	2.77e-01	2.67e-01	2.07e-01	1.97e-01
WFG8	10d	6.08e-01	4.56e-01	4.58e-01	5.50e-01	4.26e-01	1.12e+00	8.77e-01	4.22e-01	4.36e-01
WFG8	15d	9.91e-01	8.31e-01	6.13e-01	7.51e-01	6.01e-01	1.31e+00	1.11e+00	5.98e-01	6.53e-01
WFG9	5	1.84e-01	1.79e-01	1.70e-01	1.72e-01	1.69e-01	2.91e-01	2.11e-01	1.78e-01	1.69e-01
WFG9	10d	4.30e-01	5.03e-01	4.06e-01	4.64e-01	4.00e-01	9.31e-01	7.64e-01	3.94e-01	3.91e-01
WFG9	15d	7.83e-01	7.54e-01	5.74e-01	6.98e-01	6.06e-01	1.09e+00	1.08e+00	5.97e-01	5.71e-01

bias of indicators, we implement three variants of stochastic ranking with the parameter p_c set to 1, 0.5, and 0 (corresponding to I_{e+} only, I_{e+} and I_{SDE} , I_{SDE} only scenarios). The direction-based archive is not included in the three variants in order to keep the algorithm behavior away from the archive's impact. Fig. 2 shows a typical solution set in parallel coordinates obtained by the three algorithm variants. As can be seen from the figure, I_{e+} leads the population to convergence to a single solution in the objective space; I_{SDE} results in a diverse population yet it is unable to push the population to converge to the PF; the combination of the two

indicators with a probability of 0.5 results in a well-converged and well-spreading population.

B. Effectiveness of Archive

In order to show the effectiveness of the archive, we compared SRA and SRA2 (SRA with archive) on DTLZ1-4 problems with 5, 10, and 15 objectives. The IGD and HV results are shown in Table III. From the table, we can see that the overall performance of SRA2 is better than SRA in terms of both IGD and hypervolume, since the right column

TABLE VII
PERFORMANCE COMPARISON OF SRA AND SRA2 WITH STATE-OF-THE-ART ALGORITHMS IN TERMS OF THE AVERAGE HV VALUES ON WFG PROBLEMS. THE BEST AND SECOND BEST AVERAGE HV VALUES AMONG ALL THE ALGORITHMS FOR EACH INSTANCE ARE HIGHLIGHTED IN GRAY AND LIGHT GRAY

Problem	m	HypE	AGE-II	NSGA-III	Two_Arch2	SPEA2+SDE	MOEA/D	IBEA	SRA	SRA2
WFG1	5	4.69e-01	3.46e-01	2.68e-01	5.46e-01	4.51e-01	5.68e-01	6.04e-01	4.67e-01	5.00e-01
WFG1	10	1.88e-01	2.82e-01	2.23e-01	5.28e-01	3.96e-01	6.06e-01	5.94e-01	4.34e-01	5.82e-01
WFG1	15	8.09e-02	3.59e-01	3.00e-01	7.11e-01	4.84e-01	6.50e-01	7.65e-01	5.62e-01	7.60e-01
WFG2	5	9.81e-01	9.25e-01	9.54e-01	9.06e-01	9.52e-01	9.22e-01	8.79e-01	9.73e-01	9.65e-01
WFG2	10	9.58e-01	9.41e-01	9.59e-01	9.14e-01	9.70e-01	9.11e-01	8.51e-01	9.81e-01	9.71e-01
WFG2	15	9.41e-01	9.03e-01	9.56e-01	9.10e-01	9.59e-01	9.08e-01	5.93e-01	9.66e-01	9.39e-01
WFG3	5	6.81e-01	6.01e-01	6.24e-01	6.62e-01	5.88e-01	6.38e-01	2.38e-01	6.40e-01	6.43e-01
WFG3	10d	6.60e-01	5.54e-01	6.16e-01	6.53e-01	5.15e-01	3.31e-01	1.42e-01	5.98e-01	5.70e-01
WFG3	15d	5.38e-01	3.84e-01	5.65e-01	6.44e-01	4.07e-01	1.70e-01	1.11e-01	5.24e-01	5.42e-01
WFG4	5	7.78e-01	6.35e-01	7.16e-01	6.46e-01	6.97e-01	6.69e-01	5.33e-01	7.10e-01	7.02e-01
WFG4	10d	7.67e-01	4.47e-01	7.36e-01	5.15e-01	7.49e-01	3.33e-01	3.48e-01	7.65e-01	7.72e-01
WFG4	15d	5.77e-01	2.55e-01	8.14e-01	4.70e-01	7.45e-01	1.45e-01	3.45e-01	6.96e-01	7.86e-01
WFG5	5	7.52e-01	6.33e-01	7.00e-01	7.00e-01	7.04e-01	6.61e-01	7.45e-01	7.00e-01	6.82e-01
WFG5	10	8.20e-01	4.53e-01	6.99e-01	6.60e-01	7.29e-01	3.95e-01	7.91e-02	7.38e-01	7.10e-01
WFG5	15	5.61e-01	3.20e-01	7.40e-01	6.29e-01	7.30e-01	2.30e-01	7.90e-02	7.17e-01	7.25e-01
WFG6	5	7.49e-01	6.20e-01	6.84e-01	6.84e-01	6.76e-01	6.25e-01	7.23e-01	6.77e-01	6.65e-01
WFG6	10	8.74e-01	4.59e-01	7.54e-01	6.09e-01	7.00e-01	2.89e-01	5.70e-01	6.91e-01	6.98e-01
WFG6	15	6.32e-01	3.05e-01	8.47e-01	5.09e-01	7.30e-01	8.17e-02	3.42e-01	6.98e-01	7.26e-01
WFG7	5	7.98e-01	6.59e-01	7.46e-01	6.32e-01	7.26e-01	6.60e-01	7.88e-01	7.35e-01	7.30e-01
WFG7	10d	9.08e-01	5.42e-01	7.84e-01	5.97e-01	7.73e-01	3.73e-01	4.82e-01	7.93e-01	7.81e-01
WFG7	15d	6.11e-01	2.48e-01	9.03e-01	6.09e-01	7.54e-01	1.20e-01	3.40e-01	6.95e-01	8.26e-01
WFG8	5	6.89e-01	5.68e-01	6.26e-01	4.87e-01	6.30e-01	6.06e-01	6.33e-01	6.15e-01	6.08e-01
WFG8	10d	7.86e-01	4.70e-01	6.55e-01	4.16e-01	6.93e-01	1.30e-01	4.83e-01	6.39e-01	6.41e-01
WFG8	15d	5.81e-01	1.74e-01	7.58e-01	4.15e-01	7.47e-01	2.89e-02	3.44e-01	5.96e-01	7.12e-01
WFG9	5	6.74e-01	6.21e-01	6.50e-01	6.26e-01	6.73e-01	5.97e-01	6.38e-01	6.74e-01	6.59e-01
WFG9	10d	7.51e-01	4.58e-01	6.79e-01	5.12e-01	7.19e-01	3.42e-01	5.14e-01	7.25e-01	6.90e-01
WFG9	15d	6.48e-01	2.95e-01	6.81e-01	3.73e-01	6.73e-01	2.31e-01	3.28e-01	6.72e-01	6.60e-01

corresponding to SRA2 contains more gray items than the left one. For multimodal problems DTLZ1 and DTLZ3, SRA2 performs better than SRA in terms of IGD. The major credit goes to the direction based archive, which helps to tackle the multimodal issue and improve the convergence of the algorithm. For unimodal problems DTLZ2 and DTLZ4, the contradiction between different indicators seems to be less than that on multimodal problems. SRA2 is better than SRA in terms of hypervolume, which indicates that the archive helps to maintain diversity for the population.

C. Comparison With State-of-the-Art Algorithms

The performance comparisons of the peer algorithms on DTLZ and WFG problems in terms of IGD and HV are shown in Tables IV–VII, respectively. Table VIII presents the pair-wise comparison results according to Wilcoxon rank sum test. Based on the statistical test results, the average performance score (APS) [29] is further calculated to reveal the overall performance of the algorithms. Given a certain problem instance, the performance score of an algorithm is defined as the number of algorithms that beat the algorithm on the specific instance significantly. The smaller the performance score is, the better the algorithm performs on that instance. Here, the APS over all test instances for all these algorithms in terms of IGD and HV is summarized in Fig. 3.

From the results of Wilcoxon rank sum test and APS, it can be observed that both SRA and SRA2 achieve competitive performance since they are both among the top three algorithms in terms of the overall IGD (rank 2nd and 3rd, respectively) as well as the overall HV (rank 1st and 2nd, respectively). Moreover, one should note that the best algorithms in terms of the overall IGD and HV are two different algorithms. These results demonstrate that the proposed SRA and SRA2 are able to achieve good performance in terms of different performance metrics through adopting the stochastic ranking strategy with multiple indicators.

The performance of algorithms not only vary over performance metrics, but also vary over problem classes. From the statistical test table and Fig. 3, one can see that our algorithms generally perform better on WFG problems than on DTLZ problems. This is because that the DTLZ test suite requires an algorithm to have strong convergence abilities but does not require strong diversification properties [51]. In SRA and SRA2, on the other hand, both indicators (emphasizing convergence and diversity, respectively) are given the same importance. We can also observe that SRA2 achieves better performance than SRA on the DTLZ test suite, while this is not the case for WFG problems. The direction-based archive in SRA2 seems to be too greedy for WFG problems in terms of convergence over diversity. This also verifies the reason why SRA does not perform as well on DTLZ problems to some extent.

TABLE VIII
SUMMARY OF THE WILCOXON TEST IN TERMS OF PERFORMANCE METRICS BETWEEN DIFFERENT ALGORITHMS ON DTLZ AND WFG PROBLEMS. THE PAIRWISE WIN-TIE-LOSS COUNTS OF ROWS AGAINST COLUMNS ARE SHOWN IN THE TABLE

IGD (DTLZ)	AGE-II	NSGA-III	Two_Arch2	SPEA2+SDE	MOEA/D	IBEA	SRA	SRA2
HypE	0-0-12	1-0-11	0-1-11	0-0-12	1-0-11	6-0-6	0-0-12	0-1-11
AGE-II		8-2-2	9-1-2	6-1-5	7-0-5	12-0-0	8-2-2	7-3-2
NSGA-III			5-1-6	1-2-9	1-1-10	9-0-3	5-1-6	6-1-5
Two_Arch2				2-1-9	4-0-8	8-1-3	5-0-7	3-2-7
SPEA2+SDE					7-3-2	12-0-0	9-3-0	9-1-2
MOEA/D						11-0-1	7-1-4	8-2-2
IBEA							0-0-12	0-0-12
SRA								4-2-6
HV (DTLZ)	AGE-II	NSGA-III	Two_Arch2	SPEA2+SDE	MOEA/D	IBEA	SRA	SRA2
HypE	8-0-4	1-2-9	5-2-5	0-0-12	0-0-12	6-1-5	0-0-12	1-0-11
AGE-II		3-0-9	3-2-7	0-1-11	1-0-11	4-2-6	0-2-10	1-0-11
NSGA-III			9-0-3	7-2-3	3-5-4	9-0-3	7-2-3	4-5-3
Two_Arch2				0-1-11	0-0-12	5-2-5	0-1-11	0-1-11
SPEA2+SDE					1-4-7	11-1-0	6-2-4	4-4-4
MOEA/D						12-0-0	8-2-2	6-5-1
IBEA							1-1-10	0-0-12
SRA								3-1-8
IGD (WFG)	AGE-II	NSGA-III	Two_Arch2	SPEA2+SDE	MOEA/D	IBEA	SRA	SRA2
HypE	4-2-21	0-1-26	3-2-22	0-0-27	21-2-4	21-0-6	0-0-27	0-0-27
AGE-II		6-2-19	6-1-20	0-2-25	23-0-4	21-0-6	1-1-25	2-3-22
NSGA-III			18-1-8	6-3-18	23-0-4	21-0-6	10-1-16	8-3-16
Two_Arch2				5-4-18	23-1-3	22-1-4	6-1-20	7-0-20
SPEA2+SDE					23-3-1	21-0-6	7-8-12	13-4-10
MOEA/D						6-0-21	1-0-26	0-3-24
IBEA							6-0-21	5-1-21
SRA								12-3-12
HV (WFG)	AGE-II	NSGA-III	Two_Arch2	SPEA2+SDE	MOEA/D	IBEA	SRA	SRA2
HypE	25-0-2	15-1-11	21-1-5	15-2-10	24-0-3	24-0-3	13-4-10	15-3-9
AGE-II		3-0-24	3-5-19	2-0-25	17-3-7	10-2-15	0-0-27	0-0-27
NSGA-III			16-5-6	12-7-8	23-0-4	20-0-7	11-5-11	14-6-7
Two_Arch2				6-5-16	19-3-5	17-1-9	6-3-18	6-3-18
SPEA2+SDE					23-0-4	20-0-7	6-8-13	8-8-11
MOEA/D						9-1-17	3-2-22	2-1-24
IBEA							7-0-20	5-2-20
SRA								13-7-7
IGD (overall)	AGE-II	NSGA-III	Two_Arch2	SPEA2+SDE	MOEA/D	IBEA	SRA	SRA2
HypE	4-2-33	1-1-37	3-3-33	0-0-39	22-2-15	27-0-12	0-0-39	0-1-38
AGE-II		14-4-21	15-2-22	6-3-30	30-0-9	33-0-6	9-3-27	9-6-24
NSGA-III			23-2-14	7-5-27	24-1-14	30-0-9	15-2-22	14-4-21
Two_Arch2				7-5-27	27-1-11	30-2-7	11-1-27	10-2-27
SPEA2+SDE					30-6-3	33-0-6	16-11-12	22-5-12
MOEA/D						17-0-22	8-1-30	8-5-26
IBEA							6-0-33	5-1-33
SRA								16-5-18
HV (overall)	AGE-II	NSGA-III	Two_Arch2	SPEA2+SDE	MOEA/D	IBEA	SRA	SRA2
HypE	33-0-6	16-3-20	26-3-10	15-2-22	24-0-15	30-1-8	13-4-22	16-3-20
AGE-II		6-0-33	6-7-26	2-1-36	18-3-18	14-4-21	0-2-37	1-0-38
NSGA-III			25-5-9	19-9-11	26-5-8	29-0-10	18-7-14	18-11-10
Two_Arch2				6-6-27	19-3-17	22-3-14	6-4-29	6-4-29
SPEA2+SDE					24-4-11	31-1-7	12-10-17	12-12-15
MOEA/D						21-1-17	11-4-24	8-6-25
IBEA							8-1-30	5-2-32
SRA								16-8-15

1) *DTLZ Test Suite*: A closer look of the results in Tables IV and V can tell us that other algorithms achieve mixed performance on DTLZ problems. To be specific, according to Table IV, AGE-II and SPEA2+SDE are the best two algorithms in terms of IGD, yet the order of these two algorithms may vary with different objective numbers. Similar results are obtained for MOEA/D and NSGA-III in terms of HV on Table V. Thus, we show the parallel coordinates of the solution sets on 10-objective problems with the best IGD value among all the 20 runs in

Figs. 4–7⁸ and discuss the results on DTLZ problems in detail.

For the DTLZ1 problem, SPEA2+SDE and NSGA-III achieve the best IGD and hypervolume performance, respectively. From Fig. 4, we can see that HypE, AGE-II, and IBEA lead the population to sub-regions of the PF in different forms, which demonstrates the search bias of indicators to some

⁸The population of SRA2 is not shown in this paper due to space limitations.

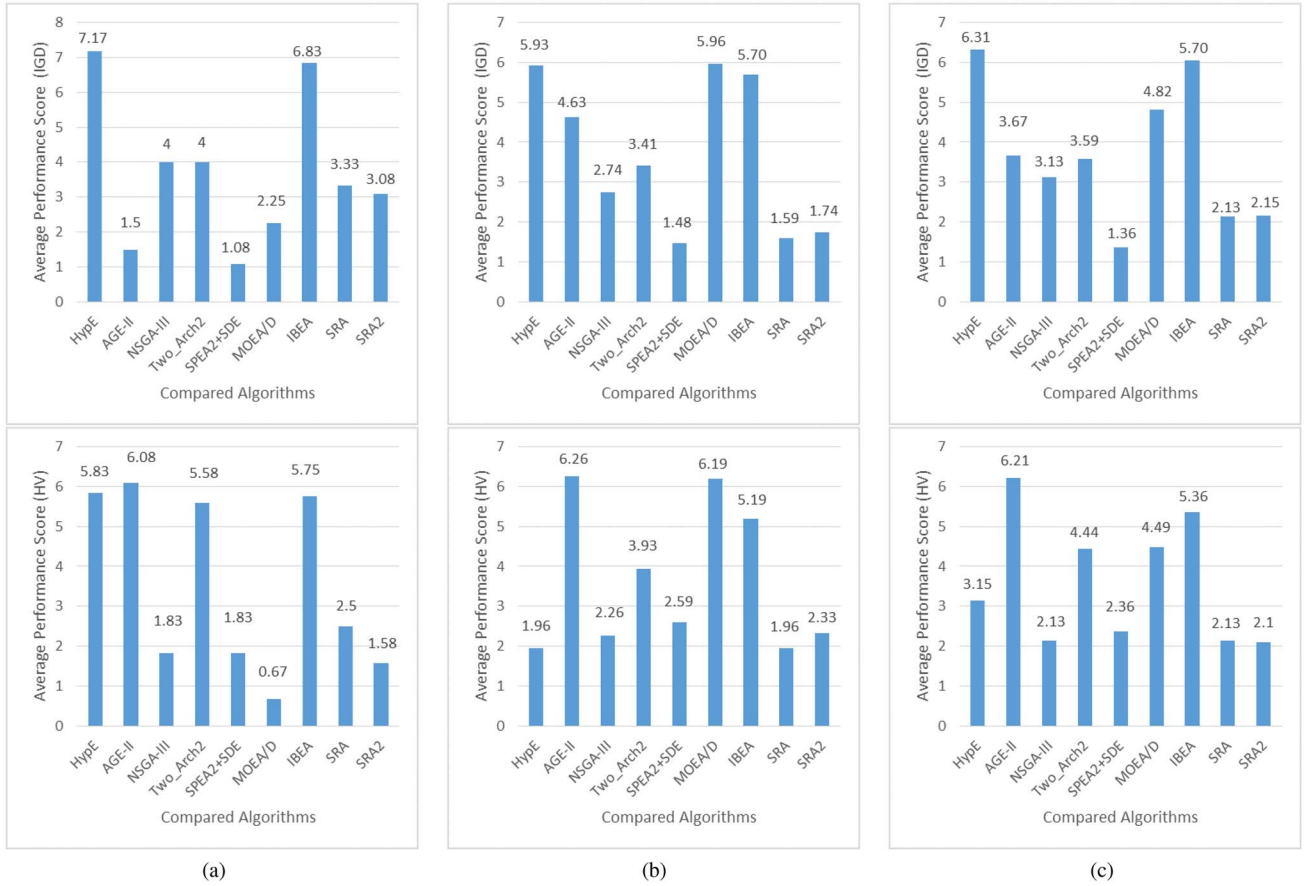


Fig. 3. APS for all the compared algorithms on the instances from (a) DTLZ (left), (b) WFG (middle), and (c) both test suites (right). The smaller the APS is, the better the algorithm performs.

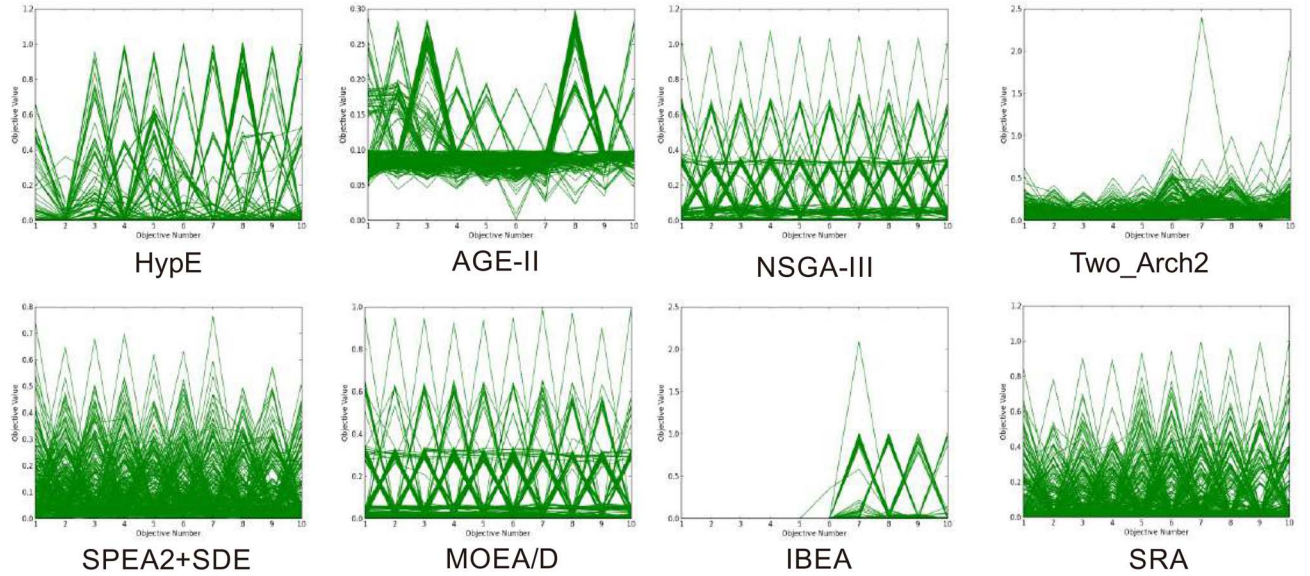


Fig. 4. Solution set corresponding to the best IGD values for all algorithms on DTLZ1 problems with ten objectives. The x-axis is the objective number, while the y-axis is the objective value.

extents. The scale of SPEA2+SDE objective values [0, 0.8] are smaller than the true PF [0, 1], which indicates that the algorithm has certain extent of preference for the solutions located in the central area. Our algorithm obtains medium performance on these instances in terms of both IGD and HV.

For the DTLZ2 problem, AGE-II has the best IGD value for the five and ten objective instance. For the 15-objective instances, MOEA/D performs best in terms of IGD, respectively. As for the hypervolume value, MOEA/D always shows the best value. From Fig. 5, one can see that, on the

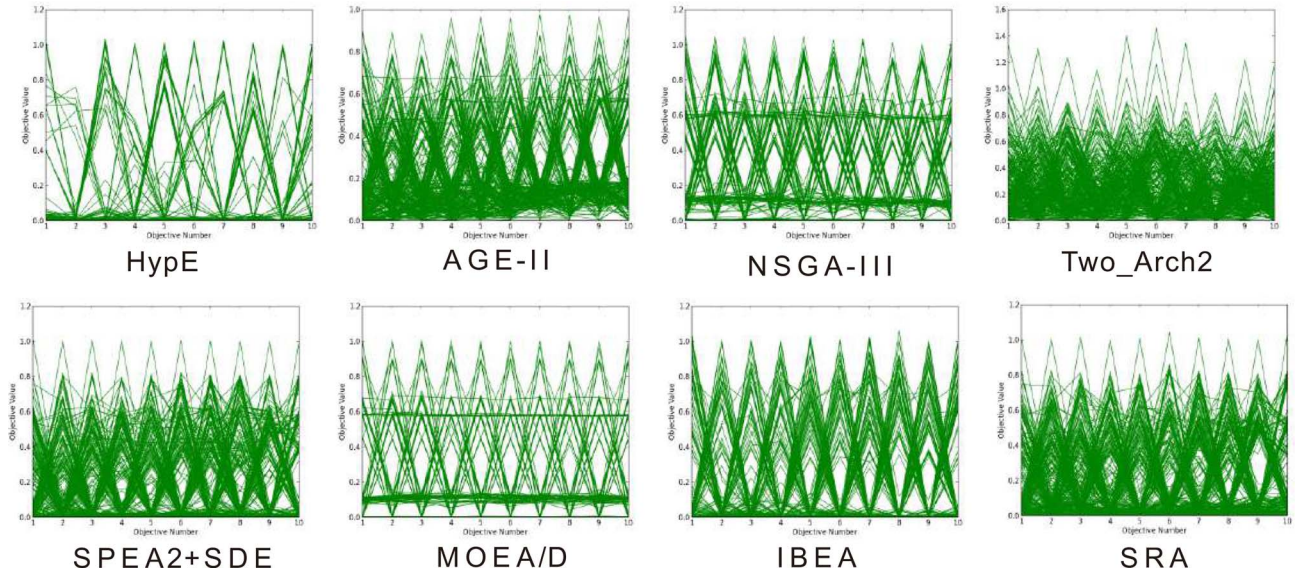


Fig. 5. Solution set corresponding to the best IGD values for all algorithms on DTLZ2 problems with ten objectives. The x -axis is the objective number, while the y -axis is the objective value.

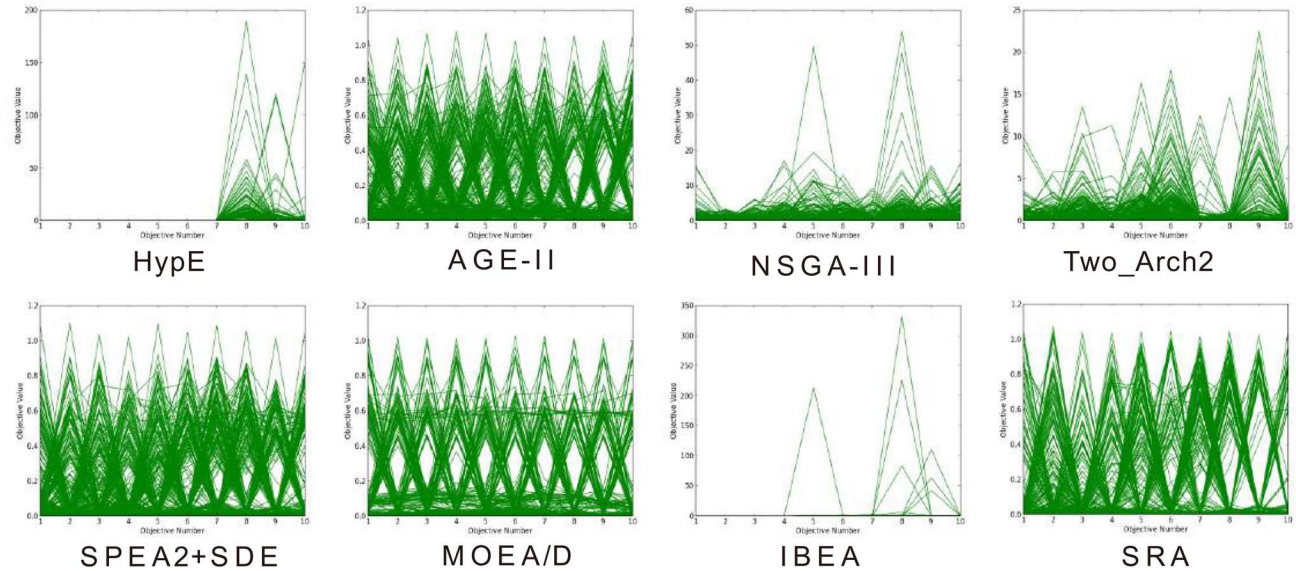


Fig. 6. Solution set corresponding to the best IGD values for all algorithms on DTLZ3 problems with ten objectives. The x -axis is the objective number, while the y -axis is the objective value.

10-objective DTLZ2 instance, HypE converges to a small number of optimal solutions, while other indicator-based algorithms (AGE-II, IBEA, SRA) provide populations with good convergence and diversity. All three weight vector-based algorithms, NSGA-III, MOEA/D, and SRA2, achieve well-organized PF approximation sets.

DTLZ3 includes a great number of local optima, and imposes a great challenge for the algorithms to push the population toward the PF. For the DTLZ3 problem, the best IGD performance is achieved by MOEA/D and AGE-II while the best hypervolume value is achieved by SRA. From Fig. 6, one can see that HypE and IBEA still have issues with maintaining diversity. Both NSGA-III and Two_Arch2 have trouble converging within the given number of fitness evaluations.

One reason for the poor convergence of NSGA-III is that the Pareto dominance-based nondomination sorting loses its efficiency in high dimensional problems. The remaining algorithms show good convergence and diversity on this test problem.

For the DTLZ4 problem, the main challenge, maintaining diversity of the population, is created by a nonuniform density of solutions. AGE-II and MOEA/D perform best in terms of IGD and HV, respectively. Since this is a unimodal problem, it does not cause much trouble for the convergence of the tested algorithms. From Fig. 7, we can see that HypE performs poorly in terms of maintaining diversity. Two_Arch2 has trouble to obtain the boundary solutions on the PF.

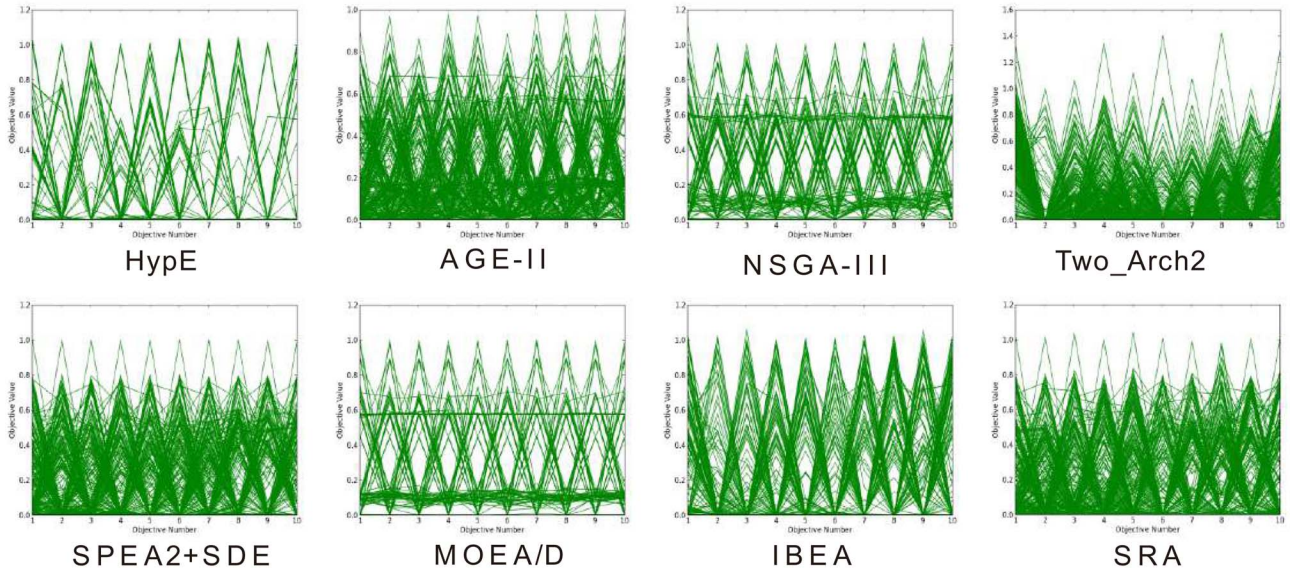


Fig. 7. Solution set corresponding to the best IGD values for all algorithms on DTLZ4 problems with ten objectives. The x -axis is the objective number, while the y -axis is the objective value.

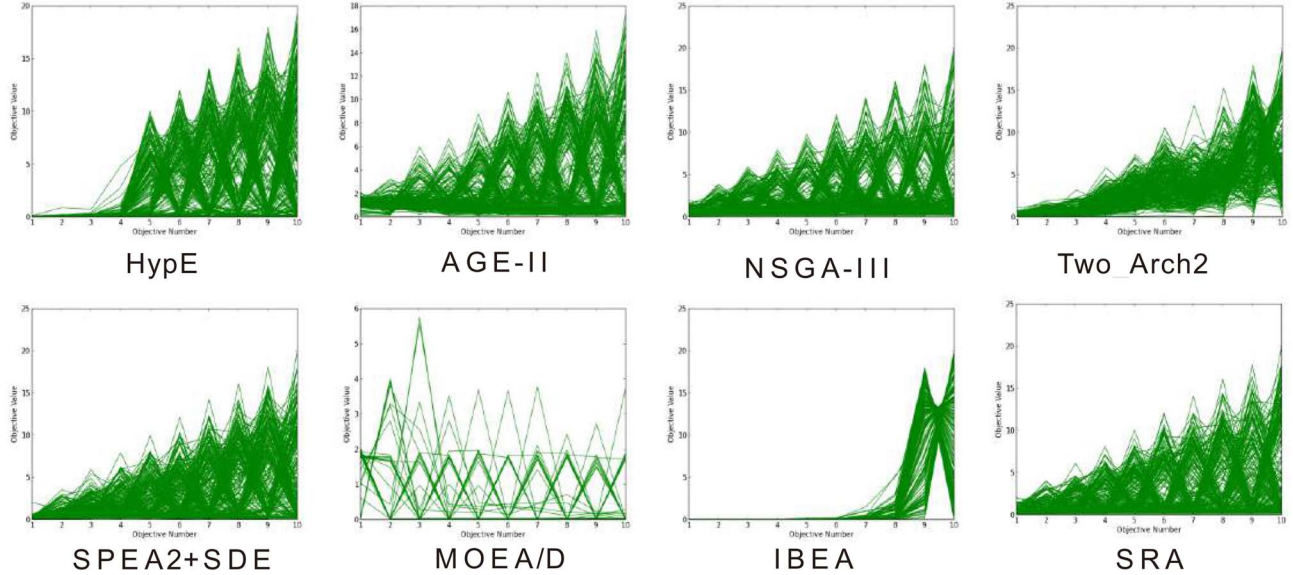


Fig. 8. Solution set corresponding to the best IGD values for all algorithms on WFG4 problems with ten objectives. The x -axis is the objective number, while the y -axis is the objective value.

2) *WFG Test Suite*: The results on WFG problems look more clear, so relatively less discussion is devoted to the WFG test suite. Our SRA and SRA2 performs well on WFG problems in terms of both IGD and HV. In fact, SRA ranks second in terms of overall IGD and first in terms of the overall hypervolume. The other algorithm which also rank 1st in terms of HV, i.e., HypE, obtains the second worst IGD. Table VIII also shows similar results of SRA and HypE, where the pairwise win-tie-loss counts of HypE against SRA in terms of IGD and HV are 0-0-27 and 13-4-10, respectively. This is another evidence that shows different indicators may have different biases. Not surprisingly, HypE performs well in terms of hypervolume since it is guided by the HV. Yet this comes with a loss in performance in terms of the IGD metric.

In order to reveal more details of the population of the algorithms, the results on the ten objective WFG4 problem is shown by parallel coordinates in Fig. 8. From the figure, one can see that the solution sets of HypE and IBEA are rather poorly distributed, while the proposed SRA provides a more evenly distributed population over different objective dimensions. This is because that emphasizing a single indicator may cause performance deterioration in terms of other indicators.

VII. CONCLUSION

In this paper, a multi-indicator-based algorithm is proposed for many-objective optimization problems. The proposed algorithm, namely SRA, employs the stochastic ranking technique

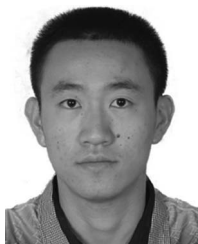
to balance the search biases of different indicators. Moreover, in the case a problem requires the algorithm to have strong convergence ability, the performance of SRA can be further improved by incorporating an direction-based archive, which preserves well-converged solutions and maintains diversity. Experimental results on 39 test instances with 5, 10, and 15 objectives from two benchmark problem suites indicate that the proposed algorithm is competitive compared with state-of-the-art algorithms in terms of both IGD and hypervolume. As a side note, we could like to encourage all researchers to carry out experimental studies on both DTLZ and WFG problems because they have very different characteristics. Using only one of them could potentially bias conclusions drawn from the experiments.

Although the overall performance of SRA is very promising, more studies need to be carried out in the future. First, a simple parameter setting scheme is adopted in the current version of SRA. Yet the effect of the parameters on SRA's performance should be thoroughly studied and some adaptive parameter strategies can be proposed accordingly. Second, only one pair of indicators is studied in this paper. It should be interesting to examine the behavior of SRA with other indicators. Third, SRA is outperformed by MOEA/D on the DTLZ test suite. The main reason for this needs to be studied. Fourth, the performance of SRA on real-world applications and combinatorial problems with more objectives needs to be tested.

REFERENCES

- [1] M. Farina and P. Amato, "On the optimal solution definition for many-criteria optimization problems," in *Proc. Annu. Meeting North Amer. Fuzzy Inf. Process. Soc. (NAFIPS)*, New Orleans, LA, USA, 2002, pp. 233–238.
- [2] K. Narukawa and T. Rodemann, "Examining the performance of evolutionary many-objective optimization algorithms on a real-world application," in *Proc. 6th Int. Conf. Genet. Evol. Comput. (ICGEC)*, Kitakushu, Japan, 2012, pp. 316–319.
- [3] K. Praditwong, M. Harman, and X. Yao, "Software module clustering as a multi-objective search problem," *IEEE Trans. Softw. Eng.*, vol. 37, no. 2, pp. 264–282, Mar./Apr. 2011.
- [4] J. R. Kasprzyk, P. M. Reed, G. W. Characklis, and B. R. Kirsch, "Many-objective de Novo water supply portfolio planning under deep uncertainty," *Environ. Model. Softw.*, vol. 34, pp. 87–104, Jun. 2012.
- [5] K. Deb, A. Pratap, S. Agarwal, and T. Meyarivan, "A fast and elitist multiobjective genetic algorithm: NSGA-II," *IEEE Trans. Evol. Comput.*, vol. 6, no. 2, pp. 182–197, Apr. 2002.
- [6] E. Zitzler, M. Laumanns, and L. Thiele, "SPEA2: Improving the strength Pareto evolutionary algorithm," *Comput. Eng. Netw. Lab., Eidgenössische Technische Hochschule Zürich (ETH), Zürich, Switzerland*, Tech. Rep. 103, May 2001.
- [7] V. Khare, X. Yao, and K. Deb, "Performance scaling of multi-objective evolutionary algorithms," in *Evolutionary Multi-Criterion Optimization*. Heidelberg, Germany: Springer, 2003, pp. 376–390.
- [8] K. Praditwong and X. Yao, "How well do multi-objective evolutionary algorithms scale to large problems," in *Proc. IEEE Congr. Evol. Comput. (CEC)*, Singapore, 2007, pp. 3959–3966.
- [9] R. C. Purshouse and P. J. Fleming, "On the evolutionary optimization of many conflicting objectives," *IEEE Trans. Evol. Comput.*, vol. 11, no. 6, pp. 770–784, Dec. 2007.
- [10] B. Li, J. Li, K. Tang, and X. Yao, "Many-objective evolutionary algorithms: A survey," *ACM Comput. Surveys (CSUR)*, vol. 48, no. 1, 2015, Art. no. 13.
- [11] M. Laumanns, L. Thiele, K. Deb, and E. Zitzler, "Combining convergence and diversity in evolutionary multiobjective optimization," *Evol. Comput.*, vol. 10, no. 3, pp. 263–282, 2002.
- [12] H. Sato, H. E. Aguirre, and K. Tanaka, "Controlling dominance area of solutions and its impact on the performance of moeas," in *Evolutionary Multi-Criterion Optimization*. Heidelberg, Germany: Springer, 2007, pp. 5–20.
- [13] X. Zou, Y. Chen, M. Liu, and L. Kang, "A new evolutionary algorithm for solving many-objective optimization problems," *IEEE Trans. Syst., Man, Cybern. B, Cybern.*, vol. 38, no. 5, pp. 1402–1412, Oct. 2008.
- [14] S. Yang, M. Li, X. Liu, and J. Zheng, "A grid-based evolutionary algorithm for many-objective optimization," *IEEE Trans. Evol. Comput.*, vol. 17, no. 5, pp. 721–736, Oct. 2013.
- [15] K. Narukawa, "Effect of dominance balance in many-objective optimization," in *Evolutionary Multi-Criterion Optimization*. Heidelberg, Germany: Springer, 2013, pp. 276–290.
- [16] S. F. Adra and P. J. Fleming, "Diversity management in evolutionary many-objective optimization," *IEEE Trans. Evol. Comput.*, vol. 15, no. 2, pp. 183–195, Apr. 2011.
- [17] M. Li, S. Yang, and X. Liu, "Shift-based density estimation for Pareto-based algorithms in many-objective optimization," *IEEE Trans. Evol. Comput.*, vol. 18, no. 3, pp. 348–365, Jun. 2014.
- [18] Y. Yuan, H. Xu, B. Wang, and X. Yao, "A new dominance relation-based evolutionary algorithm for many-objective optimization," *IEEE Trans. Evol. Comput.*, vol. 20, no. 1, pp. 16–37, Feb. 2016.
- [19] J. Cheng, G. G. Yen, and G. Zhang, "A many-objective evolutionary algorithm with enhanced mating and environmental selections," *IEEE Trans. Evol. Comput.*, vol. 19, no. 4, pp. 592–605, Aug. 2015.
- [20] Q. Zhang and H. Li, "MOEA/D: A multiobjective evolutionary algorithm based on decomposition," *IEEE Trans. Evol. Comput.*, vol. 11, no. 6, pp. 712–731, Dec. 2007.
- [21] K. Deb and H. Jain, "An evolutionary many-objective optimization algorithm using reference-point-based nondominated sorting approach, part I: Solving problems with box constraints," *IEEE Trans. Evol. Comput.*, vol. 18, no. 4, pp. 577–601, Aug. 2014.
- [22] Y. Yuan, H. Xu, B. Wang, B. Zhang, and X. Yao, "Balancing convergence and diversity in decomposition-based many-objective optimizers," *IEEE Trans. Evol. Comput.*, vol. 20, no. 2, pp. 180–198, Apr. 2016.
- [23] H. Ishibuchi, N. Akedo, and Y. Nojima, "Behavior of multiobjective evolutionary algorithms on many-objective knapsack problems," *IEEE Trans. Evol. Comput.*, vol. 19, no. 2, pp. 264–283, Apr. 2015.
- [24] R. Wang, Q. Zhang, and T. Zhang, "Decomposition based algorithms using Pareto adaptive scalarizing methods," *IEEE Trans. Evol. Comput.* [Online]. Available: <http://ieeexplore.ieee.org/xpl/articleDetails.jsp?arnumber=7390047&newsearch=true&queryText=2521175>
- [25] E. Zitzler and L. Thiele, "Multiobjective optimization using evolutionary algorithms—A comparative case study," in *Parallel Problem Solving From Nature (PPSN V)*. Heidelberg, Germany: Springer, 1998, pp. 292–301.
- [26] D. A. Van Veldhuizen and G. B. Lamont, "Evolutionary computation and convergence to a Pareto front," in *Proc. Genet. Program. Conf.*, 1998, pp. 221–228.
- [27] P. A. N. Bosman and D. Thierens, "The balance between proximity and diversity in multiobjective evolutionary algorithms," *IEEE Trans. Evol. Comput.*, vol. 7, no. 2, pp. 174–188, Apr. 2003.
- [28] M. Emmerich, N. Beume, and B. Naujoks, "An EMO algorithm using the hypervolume measure as selection criterion," in *Evolutionary Multi-Criterion Optimization*. Heidelberg, Germany: Springer, 2005, pp. 62–76.
- [29] J. Bader and E. Zitzler, "HypE: An algorithm for fast hypervolume-based many-objective optimization," *Evol. Comput.*, vol. 19, no. 1, pp. 45–76, 2011.
- [30] L. Rachmawati and D. Srinivasan, "Preference incorporation in multi-objective evolutionary algorithms: A survey," in *Proc. IEEE Congr. Evol. Comput. (CEC)*, Vancouver, BC, Canada, 2006, pp. 962–968.
- [31] R. Wang, R. C. Purshouse, and P. J. Fleming, "Preference-inspired co-evolutionary algorithm using weights for many-objective optimization," in *Proc. 15th Annu. Conf. Companion Genet. Evol. Comput.*, Amsterdam, The Netherlands, 2013, pp. 101–102.
- [32] R. Wang, R. C. Purshouse, and P. J. Fleming, "On finding well-spread Pareto optimal solutions by preference-inspired co-evolutionary algorithm," in *Proc. 15th Annu. Conf. Genet. Evol. Comput.*, Amsterdam, The Netherlands, 2013, pp. 695–702.
- [33] H. Wang, L. Jiao, and X. Yao, "Two_Arch2: An improved two-archive algorithm for many-objective optimization," *IEEE Trans. Evol. Comput.*, vol. 19, no. 4, pp. 524–541, Aug. 2015.
- [34] K. Miettinen, *Nonlinear Multiobjective Optimization*, vol. 12. New York, NY, USA: Springer, 1999.

- [35] P. L. Yu, "Cone convexity, cone extreme points, and nondominated solutions in decision problems with multiobjectives," *J. Optim. Theory Appl.*, vol. 14, no. 3, pp. 319–377, 1974.
- [36] E. Zitzler, L. Thiele, M. Laumanns, C. M. Fonseca, and V. G. da Fonseca, "Performance assessment of multiobjective optimizers: An analysis and review," *IEEE Trans. Evol. Comput.*, vol. 7, no. 2, pp. 117–132, Apr. 2003.
- [37] M. Li, S. Yang, and X. Liu, "Diversity comparison of Pareto front approximations in many-objective optimization," *IEEE Trans. Cybern.*, vol. 44, no. 12, pp. 2568–2584, Dec. 2014.
- [38] E. Zitzler and S. Künzli, "Indicator-based selection in multiobjective search," in *Parallel Problem Solving From Nature-PPSN VIII*. Heidelberg, Germany: Springer, 2004, pp. 832–842.
- [39] T. P. Runarsson and X. Yao, "Stochastic ranking for constrained evolutionary optimization," *IEEE Trans. Evol. Comput.*, vol. 4, no. 3, pp. 284–294, Sep. 2000.
- [40] K. Praditwong and X. Yao, "A new multi-objective evolutionary optimisation algorithm: The two-archive algorithm," in *Proc. Int. Conf. Comput. Intell. Security*, vol. 1. Guangzhou, China, 2006, pp. 286–291.
- [41] M. Li, S. Yang, and X. Liu, "Pareto or non-Pareto: Bi-criterion evolution in multi-objective optimization," *IEEE Trans. Evol. Comput.* [Online]. Available: <http://ieeexplore.ieee.org/xpl/articleDetails.jsp?arnumber=7347391&queryText=2504730&newsearch=true>
- [42] K. Deb, L. Thiele, M. Laumanns, and E. Zitzler, "Scalable multi-objective optimization test problems," in *Proc. IEEE Congr. Evol. Comput. (CEC)*, Honolulu, HI, USA, 2002, pp. 825–830.
- [43] S. Huband, P. Hingston, L. Barone, and L. While, "A review of multiobjective test problems and a scalable test problem toolkit," *IEEE Trans. Evol. Comput.*, vol. 10, no. 5, pp. 477–506, Oct. 2006.
- [44] K. Bringmann and T. Friedrich, "Approximating the volume of unions and intersections of high-dimensional geometric objects," in *Algorithms and Computation*. Heidelberg, Germany: Springer, 2008, pp. 436–447.
- [45] M. Wagner, K. Bringmann, T. Friedrich, and F. Neumann, "Efficient optimization of many objectives by approximation-guided evolution," *Eur. J. Oper. Res.*, vol. 243, no. 2, pp. 465–479, 2015.
- [46] J. J. Durillo and A. J. Nebro, "JMetal: A java framework for multi-objective optimization," *Adv. Eng. Softw.*, vol. 42, no. 10, pp. 760–771, 2011.
- [47] M. Wagner and F. Neumann, "A fast approximation-guided evolutionary multi-objective algorithm," in *Proc. 15th Annu. Conf. Genet. Evol. Comput. (GECCO)*, Amsterdam, The Netherlands, 2013, pp. 687–694.
- [48] K. Bringmann, T. Friedrich, F. Neumann, and M. Wagner, "Approximation-guided evolutionary multi-objective optimization," in *Proc. 22nd Int. Joint Conf. Artif. Intell.*, Barcelona, Spain, Jul. 2011, pp. 1198–1203.
- [49] K. Deb, "An efficient constraint handling method for genetic algorithms," *Comput. Methods Appl. Mech. Eng.*, vol. 186, nos. 2–4, pp. 311–338, 2000.
- [50] F. Wilcoxon, "Individual comparisons by ranking methods," *Biomet. Bull.*, vol. 1, no. 6, pp. 80–83, 1945.
- [51] H. Ishibuchi, H. Masuda, Y. Tanigaki, and Y. Nojima, "Review of coevolutionary developments of evolutionary multi-objective and many-objective algorithms and test problems," in *Proc. IEEE Symp. Comput. Intell. Multi-Criteria Decis. Making (MCDM)*, Orlando, FL, USA, 2014, pp. 178–184.



Bingdong Li (S'15) received the B.Eng. degree in computer science and technology from University of Science and Technology of China (USTC), Hefei, China, in 2011. He is currently working toward the Ph.D. degree with the USTC–Birmingham Joint Research Institute in Intelligent Computation and Its Applications, School of Computer Science and Technology.

His research interests include multiobjective evolutionary algorithms and their applications.



Ke Tang (S'05–M'07–SM'13) received the B.Eng. degree from Huazhong University of Science and Technology, Wuhan, China, in 2002 and the Ph.D. degree from Nanyang Technological University, Singapore, in 2007.

Since 2007, he has been with the School of Computer Science and Technology, University of Science and Technology of China, Hefei, China, where he is currently a Professor. He has authored/co-authored over 100 refereed publications.

His research interests include evolutionary computation, machine learning, and their real-world applications.

Dr. Tang was a recipient of the Royal Society Newton Advanced Fellowship. He is an Associate Editor of *IEEE TRANSACTIONS ON EVOLUTIONARY COMPUTATION*, *IEEE Computational Intelligence Magazine*, and *Computational Optimization and Applications* (Springer), and served as an Editorial Board Member for a few other journals. He is a member of the IEEE Computational Intelligence Society (CIS) Evolutionary Computation Technical Committee and the IEEE CIS Emergent Technologies Technical Committee.



Jinlong Li (M'14) received the B.Eng. degree in computer science and technology and the Ph.D. degree from University of Science and Technology of China (USTC), Hefei, China, in 1998 and 2003, respectively.

He is an Associate Professor with the USTC–Birmingham Joint Research Institute in Intelligent Computation and Its Applications, School of Computer Science and Technology, USTC. His research interests include evolutionary computation, machine learning, heuristic algorithms, and real-world applications.



Xin Yao (M'91–SM'96–F'03) received the B.Sc. degree from the University of Science and Technology of China (USTC), Hefei, China, in 1982; the M.Sc. degree from the North China Institute of Computing Technology, Beijing, China, in 1985; and the Ph.D. degree from USTC, in 1990.

He is a Chair (Professor) of Computer Science and the Director of the Centre of Excellence for Research in Computational Intelligence and Applications with the University of Birmingham, Birmingham, U.K.

He published 200+ refereed international journal papers. His research interests include evolutionary computation and ensemble learning.

Prof. Yao was a recipient of the 2001 IEEE Donald G. Fink Prize Paper Award, the 2010 and 2015 IEEE TRANSACTIONS ON EVOLUTIONARY COMPUTATION Outstanding Paper Awards, the 2010 BT Gordon Radley Award for Best Author of Innovation (Finalist), the 2011 IEEE TRANSACTIONS ON NEURAL NETWORKS Outstanding Paper Award, the Prestigious Royal Society Wolfson Research Merit Award in 2012, the IEEE Computational Intelligence Society (CIS) Evolutionary Computation Pioneer Award in 2013, and many other best paper awards. He was an Editor-in-Chief of *IEEE TRANSACTIONS ON EVOLUTIONARY COMPUTATION* from 2003 to 2008. He is a Past President of the IEEE CIS from 2014 to 2015.