

# Competition and constraint drove Cope's rule in the evolution of giant flying reptiles

Benson, Roger B J; Frigot, Rachel A.; Goswami, Anjali; Andres, Brian; Butler, Richard J.

DOI:

[10.1038/ncomms4567](https://doi.org/10.1038/ncomms4567)

License:

Creative Commons: Attribution (CC BY)

*Document Version*

Publisher's PDF, also known as Version of record

*Citation for published version (Harvard):*

Benson, RBJ, Frigot, RA, Goswami, A, Andres, B & Butler, RJ 2014, 'Competition and constraint drove Cope's rule in the evolution of giant flying reptiles', *Nature Communications*, vol. 5, 4567.  
<https://doi.org/10.1038/ncomms4567>

[Link to publication on Research at Birmingham portal](#)

## **Publisher Rights Statement:**

Checked for eligibility: 17/12/2015. This work is licensed under a Creative Commons Attribution 3.0 Unported License. The images or other third party material in this article are included in the article's Creative Commons license, unless indicated otherwise in the credit line; if the material is not included under the Creative Commons license, users will need to obtain permission from the license holder to reproduce the material. To view a copy of this license, visit <http://creativecommons.org/licenses/by/3.0/>

## **General rights**

Unless a licence is specified above, all rights (including copyright and moral rights) in this document are retained by the authors and/or the copyright holders. The express permission of the copyright holder must be obtained for any use of this material other than for purposes permitted by law.

- Users may freely distribute the URL that is used to identify this publication.
- Users may download and/or print one copy of the publication from the University of Birmingham research portal for the purpose of private study or non-commercial research.
- User may use extracts from the document in line with the concept of 'fair dealing' under the Copyright, Designs and Patents Act 1988 (?)
- Users may not further distribute the material nor use it for the purposes of commercial gain.

Where a licence is displayed above, please note the terms and conditions of the licence govern your use of this document.

When citing, please reference the published version.

## **Take down policy**

While the University of Birmingham exercises care and attention in making items available there are rare occasions when an item has been uploaded in error or has been deemed to be commercially or otherwise sensitive.

If you believe that this is the case for this document, please contact [UBIRA@lists.bham.ac.uk](mailto:UBIRA@lists.bham.ac.uk) providing details and we will remove access to the work immediately and investigate.

ARTICLE

Received 19 Nov 2013 | Accepted 5 Mar 2014 | Published 2 Apr 2014

DOI: 10.1038/ncomms4567

OPEN

# Competition and constraint drove Cope's rule in the evolution of giant flying reptiles

Roger B.J. Benson<sup>1</sup>, Rachel A. Frigot<sup>2</sup>, Anjali Goswami<sup>3</sup>, Brian Andres<sup>4</sup> & Richard J. Butler<sup>5</sup>

The pterosaurs, Mesozoic flying reptiles, attained wingspans of more than 10 m that greatly exceed the largest birds and challenge our understanding of size limits in flying animals. Pterosaurs have been used to illustrate Cope's rule, the influential generalization that evolutionary lineages trend to increasingly large body sizes. However, unambiguous examples of Cope's rule operating on extended timescales in large clades remain elusive, and the phylogenetic pattern and possible drivers of pterosaur gigantism are uncertain. Here we show 70 million years of highly constrained early evolution, followed by almost 80 million years of sustained, multi-lineage body size increases in pterosaurs. These results are supported by maximum-likelihood modelling of a comprehensive new pterosaur data set. The transition between these macroevolutionary regimes is coincident with the Early Cretaceous adaptive radiation of birds, supporting controversial hypotheses of bird-pterosaur competition, and suggesting that evolutionary competition can act as a macroevolutionary driver on extended geological timescales.

<sup>1</sup>Department of Earth Sciences, University of Oxford, Oxford OX1 3AN, UK. <sup>2</sup>Center for Functional Anatomy and Evolution, Johns Hopkins University, Baltimore, Maryland 21205, USA. <sup>3</sup>Department of Genetics, Evolution & Environment and Department of Earth Sciences, University College London, London WC1E 6BT, UK. <sup>4</sup>School of Geosciences, University of South Florida, Tampa, Florida 33620, USA. <sup>5</sup>School of Geography, Earth and Environmental Sciences, University of Birmingham, Birmingham B15 2TT, UK. Correspondence and requests for materials should be addressed to R.B.J.B. (email: roger.benson@earth.ox.ac.uk).

The pterosaurs, a diverse clade of Mesozoic flying reptiles, achieved body sizes unparalleled by other airborne organisms in Earth's history<sup>1</sup>. Maximum wingspans over 10 m are twice those of the largest birds, exceed many small aircraft, and have fundamentally challenged our biomechanical understanding of the limits to body size in flying animals<sup>2,3</sup>. Marked increases in pterosaur body size through their >150 million year evolutionary history have led to their frequent use as examples of Cope's rule<sup>4</sup>, the influential hypothesis that active selection generates trends of increasing body size through time<sup>5,6</sup>. However, the generality of this 'rule', its ability to persist in large clades comprising numerous, independently evolving lineages over timescales of 10<sup>7</sup>–10<sup>8</sup> years, and the existence of sustained, long-term drivers of such trends, are widely questioned<sup>7–11</sup>. Well-documented examples of Cope's rule are restricted to specialized clades (for example, herbivores and hypercarnivores) within larger radiations such as mammals<sup>5</sup> or carnivorans<sup>6</sup>. This indicates that adaptation to niches requiring large body size drives evolutionary change along individual lineages. However, it does not provide evidence that phylogenetically inclusive trends towards gigantism are common within major animal radiations.

Previous authors have suggested that Cope's rule applied to some groups of pterosaurs, and identified temporal and taxonomic variation in pterosaur body size evolution<sup>4,12,13</sup>. However, the explanatory power of these studies was limited by: (i) small data sets; (ii) failure to use detailed phylogenetic information; and (iii) methods that do not reliably distinguish active selection for body size increases along evolutionary lineages from those driven by species sorting (for example, selective extinction of smaller taxa<sup>14,15</sup>). Because of this, the evolutionary processes underlying pterosaur gigantism remain elusive.

A classic, but controversial, hypothesis posits competitive replacement of pterosaurs by birds<sup>16–18</sup>. One version of this hypothesis suggests that early birds excluded pterosaurs from small-bodied flying niches, causing selective extinction of small-bodied pterosaurs<sup>19,20</sup>, and perhaps driving pterosaur lineages to evolve larger sizes<sup>4</sup>. However, quantitative studies of limb proportion morphospace occupation and species richness led recent authors to suggest that birds did not compete with pterosaurs<sup>21,22</sup>. Indeed, although competition between species might occur on microevolutionary timescales, clear examples of competition as a macroevolutionary driver are rare<sup>23,24</sup>.

We examined phylogenetic and non-phylogenetic patterns of pterosaur body size evolution using a large phylogeny and data set of wingspan measurements and estimates. Our results indicate that pterosaurs exhibit an extremely long term, whole-clade trend to increasing body sizes during the Cretaceous, coincident with the adaptive radiation of pygostylian birds. This suggests that competition between distantly related clades (for example, birds and pterosaurs) can act as a macroevolutionary driver on extended timescales.

## Results

**Pterosaur body size through time.** For the first 70 million years of their evolutionary history, during the Triassic and Jurassic, pterosaur body sizes showed stable variance about a sub-constant mean, suggesting highly constrained body size evolution in basal (non-pterodactylid) pterosaurs (Fig. 1a). Sustained increases in maximum and minimum body size began between 150 and 130 Ma, continuing for 65–85 million years, until pterosaur extinction at the Cretaceous–Palaeogene boundary. During this second interval, body sizes show no evidence of increased variance through time (on a logarithmic scale; Fig. 1a), and so are consistent with a driven evolutionary trend<sup>25</sup>. Our results

demonstrate an abrupt upwards inflection in pterosaur wingspans some time between the latest Jurassic and Early Cretaceous, around the time of the appearance and subsequent adaptive radiation of birds<sup>26,27</sup>.

**Macroevolutionary models.** All of the best phylogenetic models suggest that pterodactylids had larger optimal body sizes than non-pterodactylids, and some suggest of them larger optimal sizes in ornithocheiroid pterodactylids compared with non-ornithocheiroid pterodactylids. AICc (Akaike's Information Criterion for finite sample sizes) weights for these clade-specific alternatives are comparable to those of a temporal regime shift occurring late in the Jurassic (Tithonian), around the origination date of birds (Fig. 2 and Table 1).

Some of the best models suggest a macroevolutionary optimum ( $\theta$ ) for non-pterodactylids ( $N=19$ ) that is different to the root node value ( $Z_0$ ) (Table 1: models D and F, both taking values  $\sim 1$  m wingspan). However, AICc weights do not distinguish this from the possibility that the non-pterodactylid optimum is equal to the root node optimization. Critically, estimation errors for both root node and non-pterodactylid optimum values are high enough that their confidence intervals overlap (Table 1). The possibility that non-pterodactylid optimum and root node values are approximately equal is consistent with stasis-like, constraint-dominated body size evolution in non-pterodactylids<sup>28–30</sup>.

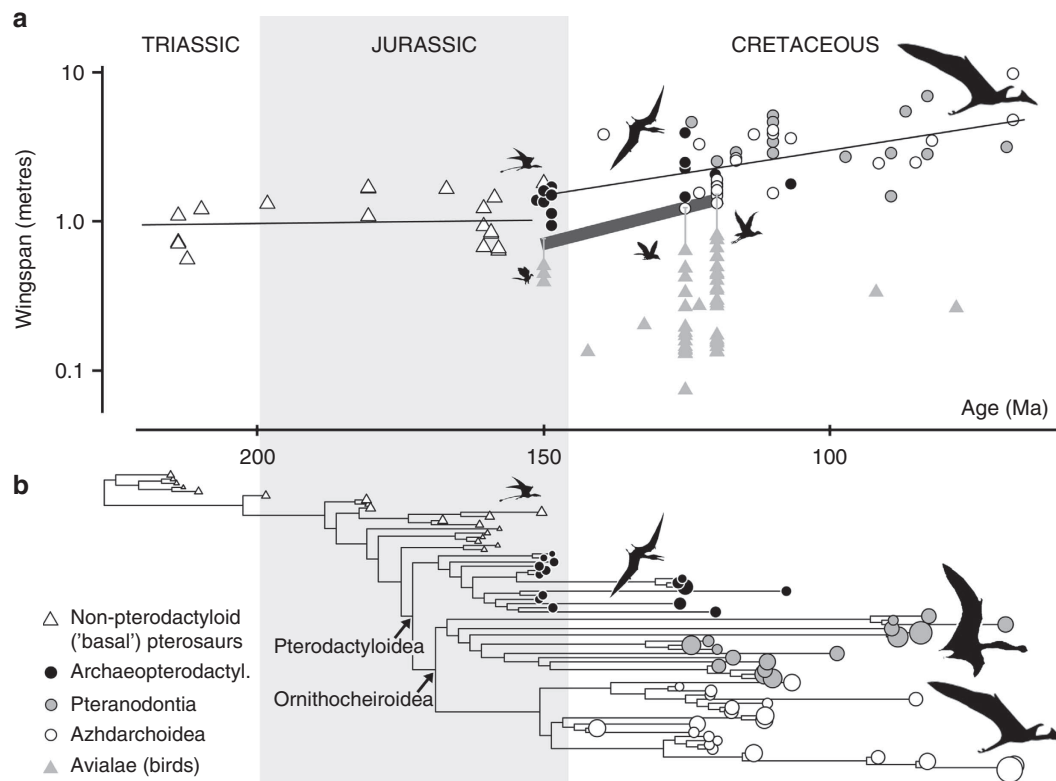
Broadly two classes of solution, which form a continuum, are recovered for pterodactylid body size optima:

In one class, macroevolutionary optima for pterodactylids as a whole (3.81 m; 0.581 log<sub>10</sub>m;  $N=53$ ), Tithonian and younger pterosaurs (including some non-pterodactylids; 4.01 m; 0.603 log<sub>10</sub>m;  $N=52$ ), or archaeopterygids (2.46 m; 0.391 log<sub>10</sub>m;  $N=15$ ) and ornithocheiroids (4.16 m; 0.619 log<sub>10</sub>m;  $N=38$ ) individually, fall within their observed range of wingspans, and attraction to optima is relatively strong ( $\alpha=0.0067$ – $0.0282$ ; Table 1: models A–C). This suggests that pterodactylids were attracted to larger body size optima than non-pterodactylids through the Cretaceous, and also that temporally successive clades might have had progressively larger body size optima.

In the other class of solutions, macroevolutionary optima of pterodactylid body size commonly exceed the range of observed values (Table 1: models D–G), but attraction to optima ( $\alpha$ ) is weak in pterosaurs ( $\alpha=0.0011$ – $0.0210$ ), and might be weaker in pterodactylids than in non-pterodactylids (Table 1: models E and G). Models with large optima, but low attraction, indicate a sustained directional trend towards larger size, because as  $\alpha$  converges on zero, the Ornstein–Uhlenbeck (OU) model reduces to Brownian motion (BM) with a constant trend coefficient  $\mu$  (ref. 28), estimated  $\sim 0.0050$ – $0.0100$  log<sub>10</sub>(m)/Ma (Table 1: model D; median results for  $\pm 2$  s.e.  $\theta$ , using  $\mu=\alpha\times\theta$ ; (ref. 28), p. 1348) or 0.0078–0.0133 (Table 1: model E; a worse model). The value of this coefficient is similar to the absolute slope of the non-phylogenetic regression line fit to Cretaceous pterosaur body size (0.0060 log<sub>10</sub>(m)/Ma), and is within (or overlaps with) its 95% confidence intervals: 0.0039–0.0082 log<sub>10</sub>(m)/Ma. This suggests that all, or almost all, of the observed pattern of Cretaceous pterosaur body size increase can be explained by directional evolution along lineages. Therefore, if this model is correct, then among-lineage factors such as selective extinction had a negligible role in determining pterosaur body size distributions at the resolution of our study<sup>14</sup>.

## Discussion

Pterosaur body sizes showed sustained evolutionary increases for the last 65–85 million years of their existence, culminating in giant



**Figure 1 | Pterosaur and bird size through time.** (a) Pterosaur adult wingspan versus geological age in millions of years (Ma). Bird datapoints represent osteological wingspans, but the likely increment to maximum wingspans from flight feathers is indicated by grey whiskers (50% in *Archaeopteryx*; 100% in Early Cretaceous birds). The thick grey line indicates maximum bird wingspans during the well-sampled Late Jurassic–Early Cretaceous interval. Thin black lines are major axis regression lines of pterosaur wingspans on geological age. The confidence interval of the Triassic–Jurassic regression line includes zero, indicating an absence of size increases ( $P = 0.396$  (regression slope);  $N = 18$ ; slope =  $-0.0004$  ( $-0.0040$  to  $0.0031$ )  $\log_{10}(\text{m})/\text{Ma}$ ; intercept =  $0.079 \log_{10}(\text{m})$  ( $= 1.20 \text{ m}$ )); the regression line for the latest Jurassic–Cretaceous indicates increasing body size through time ( $P < 0.001$  (regression slope);  $N = 54$ ; slope =  $-0.0060$  ( $-0.0082$  to  $-0.0039$ )  $\log_{10}(\text{m})/\text{Ma}$ ). (b) One representative time-calibrated cladogram of adult pterosaur specimens with tip diameters proportional to  $\log_{10}(\text{wingspan})$ . In both **a**, **b**, silhouettes are indicative of relative size only.

flying animals with wingspans of 3–10 metres. This might have been achieved by sustained directional evolution along individual lineages, or by increasingly large macroevolutionary optima in temporally successive clades. Whichever is the case, the documented pattern represents a striking example of long-term directional trend in the fossil record. The result is all the more conspicuous because earlier pterosaur body size evolution was constrained to a very limited range of relatively small adult body sizes ( $< 1.6 \text{ m}$ ) and showed no evidence of directional change through time.

This fundamental shift in the mode of body size evolution across Pterosauria suggests a long-term, phylogenetically inclusive driver. We recognize the following two major hypotheses that are not mutually exclusive<sup>19</sup>:

(1) Intrinsic features of the pterodactyloid body plan, such as modifications of the tail and limbs, which allowed improved terrestrial abilities and diversification of flight styles facilitated invasion of new, large-bodied niches<sup>3,19,31</sup>.

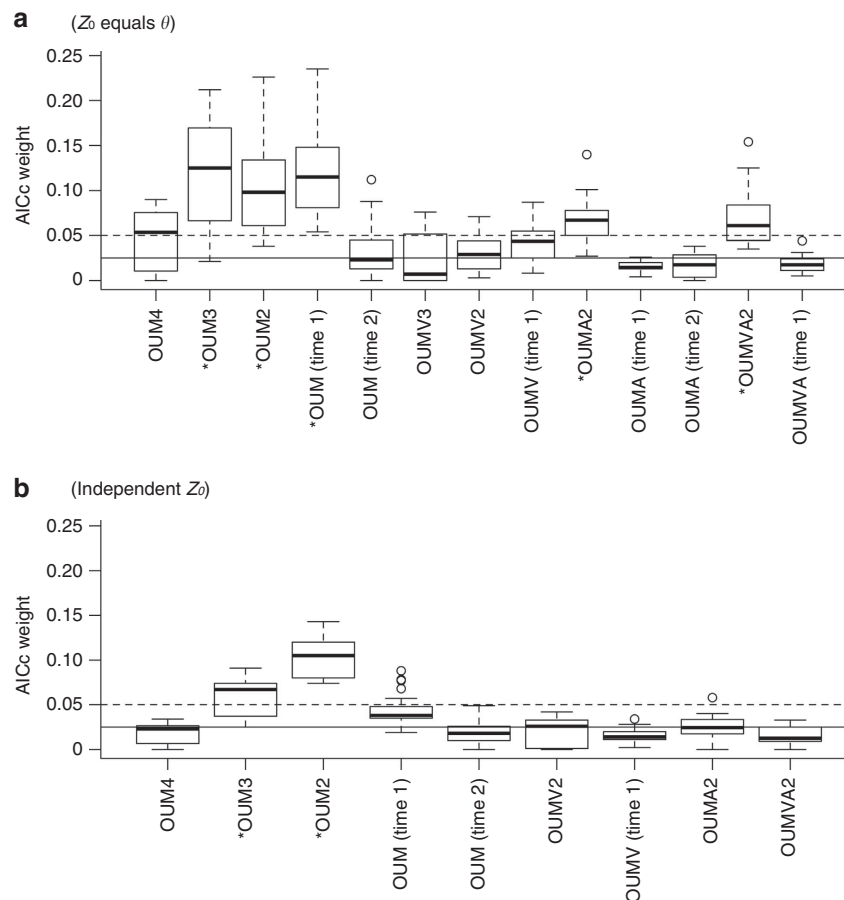
(2) Extrinsic factors such as the Late Jurassic appearance and Cretaceous diversification of birds<sup>26,27</sup> may have excluded pterosaurs from the ecological niches available to smaller flying animals, causing selective extinction of smaller pterosaurs, and also possibly causing active selection for larger body size in pterosaur evolution.

Intrinsic factors explain how pterodactyloids were able to exceed previous constraints on basal pterosaur body size, and continuously extend their maximum body size throughout the Cretaceous. However, intrinsic factors acting alone predict

expansion into a greater range of body sizes and do not explain the loss of smaller-sized pterosaurs<sup>14,25</sup>. Extrinsic forcing must therefore also have been important. Indeed, directional models of along-lineage evolution are sufficient to explain all of the observed increase in Cretaceous pterodactyloid body size at the scale of this study (for example, Table 1: model D). However, these models receive approximately equal support to models of successively higher optima in temporally younger clades (for example, Table 1: model A), which allow a partial role for selective extinction in explaining pterosaur body size trends.

Birds (Avialae) originated in the Late Jurassic, and key aspects of the avian body plan, which enabled the ecological and taxonomic diversification of birds, occurred from the Early Cretaceous<sup>26,27</sup>. Forcing by a sustained, Cretaceous adaptive radiation of birds could explain how increases in pterodactyloid minimum body size were sustained over a remarkably long-time interval, and why most or all smaller pterosaurs became abruptly extinct around the Jurassic–Cretaceous boundary (non-pterodactyloids). Although the small pterosaur *Dendrorhynchoides* was originally reported from the Cretaceous of China<sup>32</sup>, its provenance is uncertain and it might be of Jurassic age<sup>33</sup>.

Birds underwent expansion into both smaller and larger body sizes during the Early Cretaceous (Fig. 1a). Their pattern of increasing body size variance suggests an unconstrained or ‘passive’ pattern of body size diversification<sup>25</sup>, unlike the active, directional pattern seen in pterosaurs of the same time interval.



**Figure 2 | Model support for pterosaur body size evolution.** AICc weights are shown for (a) models in which the root node value ( $Z_0$ ) is equal to the macroevolutionary optimum for basal (non-pterodactyloid) pterosaurs ( $\theta$ ). (b) Models in which the root node value is estimated separately from the macroevolutionary optimum for basal pterosaurs. \*indicates models with median AICc weights above an arbitrarily-specified value of 0.05. Results from the following models are shown: OUM is an Ornstein-Uhlenbeck model with group-specific trait optima ( $\theta$ ); OUMV allows a group-specific  $\theta$  and stochastic rate parameter ( $\beta$ , Brownian variance); OUMA allows group-specific  $\theta$  and attraction parameters ( $\alpha$ ). Model name suffixes indicate the number of groups specified with distinct macroevolutionary regimes: 2, basal (non-pterodactyloids) and Pterodactyloidea; 3, basal, Archaeopterodactyloidea and Ornithocheiroidea; 4, basal, Archaeopterodactyloidea, Pteranodontoidea and Azhdarchoidea; time 1, Triassic–Kimmeridgian and Tithonian–Cretaceous; time 2, Triassic–Tithonian and Cretaceous. Thick lines indicate median values across 25 time-calibrated phylogenies, boxes indicate interquartile ranges, whiskers indicate ranges excluding outliers, and circles indicate outliers. Dashed line occurs at 0.05, non-dashed, horizontal line occurs at 0.025.

Strikingly, the maximum skeletal wingspans of birds appear to increase at approximately the same rate as minimum pterosaur wingspans during the Late Jurassic–Early Cretaceous (Fig. 1a). The rarity of bird skeletons complete enough for wingspan estimation means that this pattern cannot yet be assessed in the Late Cretaceous. However, fragmentary remains suggest body masses of 3–5 kg for some likely volant latest Cretaceous birds, which are among the largest of the Mesozoic<sup>34</sup> and demonstrate persistent increases in maximum body size. Furthermore, it is clear that Late Cretaceous birds occupied an ever increasing number of those ecological niches available to smaller or medium-sized flying animals, and continued to diversify in body size and shape<sup>26,27</sup>, raising the possibility that they exerted competitive pressure on an expanding range of ecological niches. Early Cretaceous pterosaurs took advantage of new large body-sized niches, and might have had comparable diversity and disparity to Jurassic pterosaurs<sup>35–37</sup>. However, it is clear that pterosaur species diversity<sup>35</sup> and morphological disparity<sup>36,37</sup> declined during the Late Cretaceous until their final extinction, coinciding with the culmination of their pattern of escalating body size.

When estimated feather lengths are included, the largest birds have similar wingspans to smaller contemporaneous pterosaurs in well-sampled Cretaceous time intervals. This does not appear to have been the case during the latest Jurassic (Fig. 1a). However, some latest Jurassic pterosaurs are known from subadult individuals that might have had small adult wingspans (for example, the non-pterodactyloid *Anurognathus*) but could not be included in our analyses. If smaller latest Jurassic pterosaurs existed, then the pattern of increasing pterosaur wingspans might have begun later than our results suggest, during the Early Cretaceous instead of the latest Jurassic. This possibility is consistent with the lack of ecological and taxonomic diversity among latest Jurassic birds (a single genus, *Archaeopteryx*). Competitive interactions occur on generational timescales, which cannot usually be resolved in the fossil record<sup>38</sup>. Therefore, the apparent temporal delay between the disappearance of small, Late Jurassic pterosaurs and the appearance of ecologically diverse Early Cretaceous birds with comparable wingspans to those pterosaurs is not evidence of non-competition. Instead, it might reflect the poor earliest Cretaceous record of both birds and pterosaurs (Fig. 1).

**Table 1 | Macroevolutionary model parameters for pterosaur body size evolution.**

Model	N <sub>groups</sub>	AICc weight	Group/interval	Attraction ( $\alpha$ ) and phylogenetic half-life (in square brackets)		Stochastic rate ( $\beta$ )		Optimum ( $\theta$ ) or root value ( $Z_0$ )		s.e. of $\theta$ or $Z_0$		
				Median	Range	Median	Range	Median	Range	Median	Range	
A	OUM	3	0.125	Basal	0.0158 [48.9]	(0.0106–0.0195)	0.00078	(0.00060–0.00093)	<b>–0.001</b>	<b>(–0.019 to –0.007)</b>	0.076	(0.072–0.079)
				Archaeopterodactyloidea	0.0158 [48.9]	(0.0106–0.0195)	0.00078	(0.00060–0.00093)	<b>0.391</b>	<b>(0.318–0.475)</b>	0.155	(0.136–0.181)
				Ornithocheiroidea	0.0158 [48.9]	(0.0106–0.0195)	0.00078	(0.00060–0.00093)	<b>0.619</b>	<b>(0.552–0.713)</b>	0.092	(0.085–0.106)
B	OUM	2	0.115	Triassic–Kimmeridgian	0.0206 [33.6]	(0.0150–0.0282)	0.00094	(0.00068–0.00123)	<b>0.000</b>	<b>(–0.012–0.005)</b>	0.076	(0.073–0.079)
				Tithonian–Cretaceous	0.0206 [33.6]	(0.0150–0.0282)	0.00094	(0.00068–0.00123)	<b>0.603</b>	<b>(0.527–0.684)</b>	0.069	(0.058–0.086)
C	OUM	2	0.105	Basal	0.0106 [65.4]	(0.0067–0.0148)	0.00077	(0.00061–0.00089)	<b>–0.016</b>	<b>(–0.026 to –0.013)</b>	0.080	(0.074–0.082)
				Pterodactyloidea	0.0106 [65.4]	(0.0067–0.0148)	0.00077	(0.00061–0.00089)	<b>0.581</b>	<b>(0.521–0.671)</b>	0.108	(0.090–0.125)
D	OUM	2 + root	0.098	Root	–	–	–	–	<b>–0.011</b>	<b>(–0.044 to 0.017)</b>	0.114	(0.098–0.124)
				Basal	0.0056 [124]	(0.0011–0.0120)	0.00056	(0.00038–0.00072)	<b>–0.098</b>	<b>(–0.941 to 0.097)</b>	0.511	(0.263–2.540)
				Pterodactyloidea	0.0056 [124]	(0.0011–0.0120)	0.00056	(0.00038–0.00072)	<b>1.350</b>	<b>(0.836–5.930)</b>	0.221	(0.104–1.170)
E	OUMA	2	0.067	Basal	<b>0.0242</b> <b>[28.6]</b>	<b>(0.0197–0.0345)</b>	0.00165	(0.00118–0.00265)	<b>–0.008</b>	<b>(–0.017 to –0.002)</b>	0.091	(0.085–0.095)
				Pterodactyloidea	<b>0.0112</b> <b>[61.9]</b>	<b>(0.0059–0.0203)</b>	0.00165	(0.00118–0.00265)	<b>0.939</b>	<b>(0.725–1.730)</b>	0.121	(0.063–0.249)
F	OUM	3 + root	0.067	Root	–	–	–	–	<b>–0.021</b>	<b>(–0.055 to 0.013)</b>	0.123	(0.101–0.131)
				Basal	0.0108 [64.2]	(0.0055–0.016)	0.00063	(0.00043–0.00078)	<b>0.024</b>	<b>(–0.161 to 0.113)</b>	0.286	(0.201–0.460)
				Archaeopterodactyloidea	0.0108 [64.2]	(0.0055–0.016)	0.00063	(0.00043–0.00078)	<b>0.619</b>	<b>(0.494–1.100)</b>	0.248	(0.174–0.430)
				Ornithocheiroidea	0.0108 [64.2]	(0.0055–0.016)	0.00063	(0.00043–0.00078)	<b>0.910</b>	<b>(0.741–1.500)</b>	0.130	(0.089–0.224)
G	OUMVA	2	0.061	Basal	<b>0.0352</b> <b>[19.7]</b>	<b>(0.0252–0.0638)</b>	<b>0.00112</b>	(0.00093–0.00173)	<b>0.006</b>	<b>(–0.008 to 0.023)</b>	0.070	(0.060–0.074)
				Pterodactyloidea	<b>0.0126</b> <b>[55.0]</b>	<b>(0.0066–0.0210)</b>	<b>0.00697</b>	(0.00298–0.06560)	<b>1.370</b>	<b>(0.972–3.170)</b>	0.193	(0.117–0.494)

AICc, Akaike's Information Criterion for finite sample sizes; OU, Ornstein-Uhlenbeck model. The parameters of models of adult pterosaur body size evolution with non-negligible support are shown. These results are drawn from comparisons among single- and multi-regime generalized OU models<sup>67</sup>. Median parameter values and their absolute ranges are given for analyses conducted on 25 time-calibrated phylogenies. OUM is an OU model with group-specific trait optima ( $\theta$ , in  $\log_{10}$ m); OUMV allows group-specific  $\theta$  and stochastic rate parameters ( $\beta$ , Brownian variance in  $\log_{10}$  (metres)/Ma); OUMA allows a group-specific  $\theta$  and an attraction parameter ( $\alpha$ ). The trait optimum ( $\theta$ ) for each group equals the ancestral node value ( $Z_0$ ), except in models D and F, in which separate  $\theta$  and  $Z_0$  are specified for basal (non-pterodactyloid) pterosaurs. The phylogenetic half-life ( $\ln(2)/\alpha$ ) is the time in millions of years (Ma) taken for an OU process to erase half the phylogenetic covariance between sister taxa. Parameter values varying between groups are shown in bold. Only models with ~0.5 times the median AICc weight of the best model, or better, are shown.

Our arguments generally rest on observations of similar body sizes in contemporaneous birds and pterosaurs. However, smaller birds might also have had a significant role in competing with pterosaurs. Pterosaurs and birds are separated from one another by substantial phylogenetic distance and might have had distinct energetic requirements, life history strategies and functional means of exploiting similar ecological niches. In these circumstances, strong competitive interactions can exist between animals of different sizes in modern ecosystems, including examples in which smaller taxa have the competitive advantage (for example, the invasive cyprinid fish *Pseudorasbora parva*<sup>39</sup>).

Several observations contribute to the plausibility of competitive ecological interactions between pterosaurs and birds:

(1) Both clades co-occur in the same marginal marine and continental units during the Late Jurassic<sup>40</sup> and Cretaceous<sup>41</sup>, demonstrating overlap in environmental and geographic distributions<sup>38</sup>. Interestingly, birds are substantially more abundant and diverse than pterosaurs in inland environments from the Early Cretaceous<sup>42</sup>, whereas pterosaurs remained abundant in coastal environments<sup>43</sup>. However, the Late Cretaceous decline of pterosaurs, even those living in coastal environments<sup>35–37</sup>, is coincident with a Late Cretaceous diversification of coastal birds<sup>26</sup>.

(2) Similar diets are hypothesized for many pterosaurs and birds from Early Cretaceous units, including fish, seeds,

invertebrates and hard food items in the Jehol Biota and other faunas<sup>26,44</sup>. Critically, many pterodactyloids, including most non-pterodactyloids, are characterized as eating fish<sup>19</sup>, which are included in the fossilized gut contents of Early Cretaceous birds<sup>45</sup>. These observations all demonstrate consumption of common resources by many birds and pterosaurs<sup>38</sup>. Future discoveries of Late Cretaceous birds will provide a further test of evolutionary interactions between birds and pterosaurs.

Our interpretation of pterosaur body size evolution resulting from bird diversification differs from those of previous studies asserting a lack of ecological interactions between birds and pterosaurs. For example, McGowan and Dyke<sup>21</sup> suggested that differences in the limb proportion of birds and pterosaurs demonstrated that they occupied different niches. Butler *et al.*<sup>22</sup> suggested that pterosaur diversity did not decline until the Late Cretaceous, and proposed that it was difficult to attribute these late diversity losses to competition with birds. However, given the pronounced structural differences between bird and pterosaur wings, it is not clear that differences in their limb proportions indicate substantial differences in ecological niche occupation rather than differences in flight mechanics. Furthermore, Early Cretaceous losses of small-bodied pterosaur species due to competition with birds might have been balanced by gains in pterosaur diversity at large body sizes, or by pterodactyloids exploiting new ecological niches, especially in coastal

environments<sup>19</sup>. This could have delayed the apparent decline of overall pterosaur diversity.

Pterosaurs became extinct at the end of the Cretaceous, at a time when their wingspans ranged from 3 to 10 m. Whether pterosaurs would have survived the Cretaceous–Palaeogene extinction if they had retained their earlier, smaller body size niches into the latest Cretaceous cannot be known. However, exponentially fewer niches are available for larger animals<sup>46</sup>, a well-known correlation between increasing body size and extinction risk exists for modern birds<sup>47</sup> and other groups<sup>48</sup>, and large terrestrial animals were disproportionately affected by the Cretaceous–Palaeogene extinction<sup>49,50</sup>. It seems likely that the absence of such small, late-surviving pterosaurs was a result of the ecological radiation of early birds. If so, competition with birds was responsible in part for the ultimate demise of these spectacular animals.

## Methods

All analyses were performed in R version 3.0.0 (ref. 51) using  $\log_{10}$ -transformed data. Our data set and code are archived at DRYAD (doi:10.5061/dryad.n0310).

**Data set.** We assembled the following data on the preserved skull and forelimb elements in 168 nominal pterosaur species: skull length, mandible length, pre-orbital rostrum length, humerus length, ulna length excluding olecranon process, radius length, metacarpal IV length and the lengths of phalanges 1–4 of the wing finger (digit IV) (Supplementary Data 1). Data was collected via direct specimen measurement by B.A. and from literature sources. For 34 taxa with complete forelimbs, wingspans were calculated as the summed lengths of the measured forelimb elements. Wingspans were  $\log_{10}$ -transformed before analysis because relative, not absolute, changes form the natural scale of phenotypic evolution<sup>46</sup>. Pterosaur phylogeny was based on a new taxon-rich and well-resolved cladogram including 109 species<sup>52</sup>, 92 of which had wingspans that could be measured or estimated (Fig. 1b), and temporally calibrated to geological age using paleotree version 1.8.2 (ref. 53).

The geological ages of most taxa were resolved to stage or substage level. These were converted to numerical maximum and minimum ages using the timescale of Gradstein *et al.*<sup>54</sup>

We also collected comparable osteological wingspan data for 50 Mesozoic birds<sup>27</sup> (Supplementary Data 2) so that pterosaur body size and avialan body size during the Cretaceous radiation of birds could be compared. Pterosaur and bird wings are constructed differently. In pterosaurs, the forelimb skeleton spans the entire length of the membranous wing. In contrast, bird wings include a large non-osteological portion comprised by flight feathers. Only a few Mesozoic bird fossils preserve feathers sufficiently complete to measure their proportional contribution to estimated wingspan. However, among these taxa, feathers add 50% in *Archaeopteryx*, or ~100% in Cretaceous birds, to the summed length of the forelimb bones (Supplementary Data 2). The effects of this are indicated in Fig. 1.

**Time-calibrated phylogenies.** Phylogenetic approaches were based on the strict consensus cladogram reported by Andres and Myers<sup>52</sup> that includes 109 taxa and 105 resolved nodes. The remaining nodes were resolved randomly and alternative randomizations had little effect on our results. Tip ages (that is, the ages of taxa in the tree) were drawn randomly from a uniform distribution between the maximum and minimum possible ages of each taxon. These were used to generate minimum node ages. The resulting zero-length branches of our cladogram were extended by imposing a minimum branch length of 2 Ma. All randomizations were implemented using the timePaleoPhy function of the R package paleotree version 1.8.2 (ref. 53), and analyses carried out on different versions of the time-calibrated tree yielded similar results to those reported here. We also calibrated trees using a minimum branch length of 1 Ma, and using the ‘equal’ method, which extends zero-length branches by sharing duration from the more basal non-zero-length branches. Analyses on these phylogenies yielded similar results to those reported.

**Missing data estimation—phalanx IV-4.** Twelve taxa with incomplete forelimbs were missing only the terminal wing finger phalanx (phalanx IV-4: phalanx 4 of digit IV). Therefore, we estimated the missing phalanx IV-4 lengths, resulting in a total of 47 wingspans that could be calculated directly. To determine the best estimation formula, we compared phylogenetic and non-phylogenetic generalized least squares regression models<sup>55,56</sup> using the R packages ape version 3.0–8 (ref. 57) and nlme version 3.1–109 (ref. 58) to establish which other element of the skull or forelimb best predicted the length of phalanx IV-4. We used AICc<sup>59,60</sup> to determine the level of phylogenetic signal in each regression relationship by comparing models with three different values of the phylogenetic signal parameter lambda  $\lambda$  (ref. 61): (1)  $\lambda = 0$ , equivalent to ordinary least squares regression (non-phylogenetic); (2)  $\lambda = 1$ , equivalent to regression phylogenetic independent contrasts; and (3)  $\lambda$  allowed to vary, and estimated using maximum-likelihood.

For multiple phylogenies (see below), the best predictive regression model for the length of phalanx IV-4 is phylogenetic regression ( $\lambda = 1$ ) on the length of phalanx IV-3, with an  $R^2 = 0.86$ . When  $\lambda$  is allowed to vary and estimated separately, a value of 0.96 is obtained (approximately equal to 1.0). This result supports the use of phylogenetically informed estimation methods<sup>62</sup> based on phylogenetic regression of phalanx IV-4 length on phalanx IV-3 length to predict the length of phalanx IV-4. In confirmation of this approach, the predicted values of taxa for which the length of phalanx IV-4 is known are strongly correlated with real values ( $R^2 = 0.85$ ) and become substantially stronger when *Jeholopterus*, which has an atypically short phalanx IV-4 (ref. 63), is removed from comparisons ( $R^2 = 0.92$ ). Once this is done, the mean absolute difference between predicted and known measurements is 0.058  $\log_{10}$ mm, which is negligible, compared with the mean (1.74  $\log_{10}$ mm) and s.d. (0.25  $\log_{10}$ mm) of its absolute length across our taxon sample.

**Missing data estimation—wingspan.** To establish the best regression model for estimation of unknown wingspans, we used the protocol applied above a second time. The results are shown in Table 2, excluding *Jeholopterus*, which has an unusually short skull and phalanx IV-4 (ref. 63), and is therefore an outlier in several analyses. For regression of wingspan on skull length, mandible length, rostrum length, humerus length, metacarpal IV length and the lengths of phalanges IV-1, IV-2, IV-3 and IV-4, phylogenetic regression provides the best model, and independently estimated  $\lambda$  values are approximately equal to 1.0 (range: 0.90–1.10). However, for regression of wingspan on radius or ulna length, non-phylogenetic

**Table 2 | Results of generalized least squares regression of wingspan on other skeletal measurements.**

Explanatory variable	Non-phylogenetic		Phylogenetic		$\lambda$ estimate	N	No. of estimates	Mean standard estimate error
	$R^2$	AICc	$R^2$	AICc				
Skull length	0.82	540.8	0.64	533.7*	0.92	37	35	—
Mandible length	0.87	528.7	0.71	525.2*	0.89	37	35	0.085
Rostrum length	0.71	527.0	0.52	514.9*	0.94	35	29	—
Humerus length	0.94	634.9	0.87	622.1*	0.91	46	27	0.063
Ulna length	0.95	620.7*	0.85	628.3	−0.07	46	19	0.068
Radius length	0.95	624.6*	0.84	630.7	−0.06	46	19	—
Metacarpal IV length	0.87	668.2	0.73	656.3*	0.95	46	11	—
Phalanx IV-1 length	0.97	607.7	0.92	601.1*	1.07	46	16	0.054
Phalanx IV-2 length	0.95	625.5	0.90	611.7*	0.90	46	12	0.039
Phalanx IV-3 length	0.78	689.5	0.82	643.4*	1.08	46	6	—
Phalanx IV-4 length	0.60	504.3	0.85	456.5*	1.11	35	5	—

Mean standard estimate error, the s.d. of differences between wingspans estimated from each regression model, and actual measured wingspans for taxa with known wingspans (only presented for selected, best variables); N, sample size; No. of estimates, the maximum number of additional estimates of unknown wingspans enabled by the explanatory variable. The coefficient of determination ( $R^2$ ) and Akaike's Information Criterion (AICc; the best is indicated with an asterisk\*) are given for non-phylogenetic ( $\lambda = 0$ ) and phylogenetic ( $\lambda = 1$ ) regression models. An independent, maximum-likelihood estimate of  $\lambda$  (phylogenetic signal strength) is also given ( $\lambda$  estimate). Results are shown from one representative time-calibrated tree, and exclude *Jeholopterus*.

regression provides the best model, and estimated  $\lambda$  values are approximately equal to zero (Table 2). The absence of phylogenetic signal in the relationship between wingspan and ulna/radius length implies a strong functional or developmental correlation between these measurements.

Based on  $R^2$  values, it is clear that phalanges IV-1 and IV-2 provide the best (phylogenetic) predictions of pterosaur wingspan, and ulna length might also provide good (non-phylogenetic) predictions (Table 2). But these variables only enable a few additional wingspan estimates (12–19 estimates; Table 2). Humerus length allows more additional estimates (27 estimates) but apparently has a slightly weaker relationship with wingspan (Table 2). Mandible length is the best cranial predictor of pterosaur wingspan. When known wingspans are estimated using these relationships, the mean standard errors are low (Table 2), and favour use of phalanx lengths, humerus length and mandible length to maximize the number and accuracy of estimates for pterosaurs in which wingspan was not known. In our analyses, we used wingspans from directly measured values preferentially. Where these were absent, we preferred estimated wingspans based on the length of phalanx II-4, then phalanx I-4, then the humerus and then the mandible. This resulted in 72 wingspans or wingspan estimates associated with estimates of standard error.

Because we used the skeletal proportions of specimens to estimate pterosaur wingspans, our data collection focussed only on complete individuals and not on maximum-sized or adult individuals. Therefore, our wingspans were known to be underestimates in several taxa. The wingspans of the following taxa were scaled up by the proportions of their largest individual (Supplementary Data 1): *Ardeadactylus longicollum*, *Batrachognathus volans*, *Campylognathoides liasicus*, *Darwinopterus modularis*, *Dimorphodon macronyx*, *Dorygnathus banthensis*, *Eudimorphodon rosenfeldi*, *Germanodactylus rhamphastinus*, *Noriopterus parvus*, *Pteranodon longiceps*, *Pterodactylus antiquus*, *Pterodaustro guinazui*, *Rhamphorhynchus muensteri*, *Sinopterus dongi* and *Zhejiangopterus linhaiensis*.

**Pterosaur body size through time.** In addition to phylogenetic model fitting (explained below), we also fit (non-phylogenetic) ordinary least squares regression lines to wingspan versus age separately for Triassic–Jurassic and Cretaceous pterosaurs. These lines capture the long-term trajectory of pterosaur body size distributions that emerges from interactions between along-lineage evolution (models described above) and among-lineage factors such as species sorting<sup>14</sup>.

**Macroevolutionary models.** Analyses were conducted excluding taxa known only from juveniles and subadults, identified using well-established skeletal ossification and fusion characters<sup>64,65</sup>. In total, 72 adult wingspans, or estimated wingspans with mean standard errors, were known for taxa included in our tree.

BM is a two parameter model in which  $\beta$  is the Brownian variance, a measure of evolutionary rate<sup>29,66</sup>, and  $Z_0$  is the root node value. OU is a three/four parameter model of evolution constrained around a trait optimum ( $\theta$ ) by strength of attraction  $\alpha$ <sup>28,67,68</sup>. In the OU model,  $\beta$  becomes the dominant variable when trait values are approximately equal  $\theta$ . When this occurs,  $\beta$  specifies expected trait variance about a mean value of  $\theta$ , thus mimicking macroevolutionary stasis<sup>28,29</sup>. The trait optimum of OU models can be set equal to the root node optimization ( $Z_0$ ), or for non-ultrametric trees a separate value can be estimated ( $\theta$ ), resulting in a four parameter model of attraction towards the trait optimum from a distinct root node value<sup>67</sup>.

Hypotheses of non-Brownian body size evolution on our time-calibrated trees were examined by testing the fit of numerical evolutionary models using maximum likelihood<sup>15,61,66–68</sup>, using the R packages geiger version 1.99–3 (ref. 69) for exploratory analyses, and OUwie version 1.33 (ref. 67) for the full set of final analyses. Although geiger includes some models that cannot be tested in OUwie, most of these (early burst and the ‘white’ stasis model) had poor fit to our data compared with BM or the OU model<sup>28,67</sup>, and trend (or ‘drift’) can effectively be modelled by an OU model (ref. 28, p. 1348).

Alternative macroevolutionary models were evaluated in Pterosauria and subsets of Pterosauria including non-pterodactyloid grade pterosaurs, Pterodactyloidea, the two major pterodactyloid clades Archaeopterodactyloidea and Ornithocheiroidea, the ornithocheiroid clades Pteranodontoidea and Azhdarchoidea, and between time intervals specified using the make.era.map function of phytools<sup>70</sup>. Models were compared using Akaike weights<sup>60</sup> based on AICc<sup>59</sup>.

Single regime models (that is, one set of evolutionary model parameters applied to the whole tree) were compared with multiple regime models in which stochastic rates ( $\beta$ ), body size optima ( $\theta$ ) and strength of attraction ( $\alpha$ ) to optima vary between groups<sup>67</sup>. Specifically, we tested whether modes of evolution varied among non-pterodactyloid pterosaurs, pterodactyloids and pterodactyloid subclades (Archaeopterodactyloidea, Ornithocheiroidea, Pteranodontoidea and Azhdarchoidea), and between two pairs of time intervals: (1) Triassic–Kimmeridgian and Tithonian–Cretaceous; and (2) Triassic–Tithonian and Cretaceous; note that the Tithonian stage of the latest Jurassic marks the first fossil occurrence of Avialae: *Archaeopteryx*).

Owing to the large number of parameters, and the explicit inclusion of estimation errors and stratigraphic uncertainty in our data, model optimization was not successful for all analyses. For example, sometimes, probable local optima or saddle points in the likelihood surface were recovered. The results reported here

are those from 25 time-calibrated phylogenies with successfully optimized parameters across all the candidate models. These results are representative of those recovered in other analyses.

## References

- Lawson, D. A. Pterosaur from the latest Cretaceous of West Texas: discovery of the largest flying creature. *Science* **187**, 947–948 (1975).
- Sato, K. *et al.* Scaling of soaring seabirds and implications for flight abilities of giant pterosaurs. *PLoS ONE* **4**, e5400 (2009).
- Witton, M. P. & Habib, M. B. On the size and flight diversity of giant pterosaurs, the use of birds as pterosaur analogues and comments on pterosaur flightlessness. *PLoS ONE* **5**, e13982 (2010).
- Kingsolver, J. G. & Pfennig, D. W. Patterns and power of phenotypic selection in nature. *BioScience* **57**, 561–572 (2007).
- Alroy, J. Cope’s Rule and the dynamics of body mass evolution in North American mammals. *Science* **280**, 731–734 (1998).
- Van Valkenburgh, B., Wang, X.-M. & Damuth, J. Cope’s rule, hypercarnivory, and extinction in North American canids. *Science* **306**, 101–104 (2004).
- Stanley, S. M. An explanation for Cope’s rule. *Evolution* **27**, 1–26 (1973).
- Gould, S. J. Cope’s Rule as a psychological artefact. *Nature* **385**, 199–200 (1997).
- Jablonski, D. Body-size evolution in Cretaceous molluscs and the status of Cope’s Rule. *Nature* **385**, 250–252 (1997).
- Hunt, G. The relative importance of directional change, random walks, and stasis in the evolution of fossil lineages. *Proc. Natl Acad. Sci. USA* **104**, 18404–18408 (2007).
- Sookias, R. B., Butler, R. J. & Benson, R. B. J. Rise of dinosaurs reveals major body size transitions are driven by passive processes of trait evolution. *Proc. R. Soc. B* **279**, 2180–2187 (2012).
- Chatterjee, S. & Templin, R. J. Posture, locomotion, and paleoecology of pterosaurs. *Geol. Soc. Am. Special Papers* **376**, 1–64 (2004).
- Hone, D. W. E. & Benton, M. J. Cope’s Rule in the Pterosauria, and differing perceptions of Cope’s Rule at different taxonomic levels. *J. Evol. Biol.* **20**, 1164–1170 (2007).
- Alroy, J. Understanding the dynamics of trends within evolving lineages. *Paleobiology* **26**, 319–329 (2000).
- Hunt, G. & Carrano, M. T. In *Quantitative Methods in Paleobiology* 16 (eds Alroy, J. & Hunt, G.) 245–269 (Paleontological Society Papers, 2010).
- Romer, A. S. *Vertebrate Paleontology* 3rd edn, 468 (Univ. of Chicago Press, 1966).
- Unwin, D. M. In *Extinction and Survival in the Fossil Record* (ed. Larwood, G. P.) 295–318 (Clarendon, 1988).
- Penny, D. & Phillips, M. J. The rise of birds and mammals: are microevolutionary processes sufficient for macroevolution. *Trends Ecol. Evol.* **19**, 516–522 (2004).
- Unwin, D. M. *Pterosaurs from Deep Time* 352 (Pi Press, 2005).
- Slack, K. E. *et al.* Early penguin fossils, plus mitochondrial genomes, calibrate avian evolution. *Mol. Biol. Evol.* **23**, 1144–1155 (2006).
- McGowan, A. J. & Dyke, G. J. A morphospace-based test for competitive exclusion among flying vertebrates: did bats, birds and pterosaurs get in each other’s space? *J. Evol. Biol.* **20**, 1230–1236 (2007).
- Butler, R. J., Barrett, P. M., Nowbath, S. & Upchurch, P. Estimating the effects of the rock record on pterosaur diversity patterns: implications for hypotheses of bird/pterosaur competitive replacement. *Paleobiology* **35**, 432–446 (2009).
- Gould, S. J. & Calloway, C. B. Clams and brachiopods—ships that pass in the night. *Paleobiology* **6**, 383–396 (1980).
- Benton, M. J. Testing the roles of competition and expansion in tetrapod evolution. *Proc. R. Soc. B* **263**, 641–646 (1996).
- McShea, D. W. Mechanisms of large-scale evolutionary trends. *Evolution* **48**, 1747–1763 (1994).
- O’Connor, J. K., Chiappe, L. M. & Bell, A. In *Living Dinosaurs: The Evolutionary History of Modern Birds* (eds Dyke, G. & Kaiser, G.) 39–114 (Wiley, 2011).
- Benson, R. B. J. & Choiniere, J. N. Rates of dinosaur limb evolution provide evidence for exceptional radiation in Mesozoic birds. *Proc. R. Soc. B* **280**, 20131780 (2013).
- Hansen, T. F. Selection and the comparative analysis of evolution. *Evolution* **51**, 1341–1351 (1997).
- Hunt, G. Measuring rates of phenotypic evolution and the inseparability of tempo and mode. *Paleobiology* **38**, 351–373 (2012).
- Slater, G. J. Phylogenetic evidence for a shift in the mode of mammalian body size evolution at the Cretaceous–Palaeogene boundary. *Methods Ecol. Evol.* **4**, 734–744 (2013).
- Lü, J.-C., Unwin, D. M., Jin, X.-S., Liu, Y.-Q. & Ji, Q. Evidence of modular evolution in a long-tailed pterosaur with a pterodactyloid skull. *Proc. R. Soc. B* **277**, 383–389 (2009).



32. Ji, S.-A., Ji, Q. & Padian, K. Biostratigraphy of new pterosaurs from China. *Nature* **398**, 573–574 (1998).
33. Lü, J.-C. & Hone, D. W. E. A new Chinese anurognathid pterosaur and the evolution of pterosaurian tail lengths. *Acta Palaeontol. Sinic.* **86**, 1317–1325 (2012).
34. Longrich, N. R., Tokaryk, T. & Field, D. J. Mass extinction of birds at the Cretaceous–Paleogene (K–Pg) boundary. *Proc. Natl Acad. Sci. USA* **108**, 15253–15257 (2011).
35. Butler, R. J., Benson, R. B. J. & Barrett, P. M. Pterosaur diversity: untangling the influence of sampling biases: Lagerstätten, and genuine biodiversity signals. *Palaeogeogr. Palaeoclimatol. Palaeoecol.* **372**, 78–87 (2013).
36. Butler, R. J., Brusatte, S. L., Andres, B. & Benson, R. B. J. How do geological sampling biases affect studies of morphological evolution in deep time? A case study of pterosaur (Reptilia: Archosauria) disparity. *Evolution* **66**, 147–162 (2011).
37. Prentice, K. C., Ruta, M. & Benton, M. J. Evolution of morphological disparity in pterosaurs. *J. Syst. Palaeontol.* **9**, 337–353 (2011).
38. Sepkoski, J. J. in *Competition in Evolution in Palaeobiology II* (eds Briggs, D. E. G. & Crowther, P. R.) 171–176 (Blackwell, 2001).
39. Britton, J. R., Davies, G. D., Brazier, B. & Pinder, A. C. A case study on the population ecology of a topmouth gudgeon (*Pseudoasbora parva*) population in the UK and the implications for native fish communities. *Aquatic Conserv. Mar. Freshw. Ecosyst.* **17**, 749–759 (2007).
40. Barthel, K. W., Swinburne, N. H. M. & Conway Morris, S. *Solnhofen: a Study in Mesozoic Palaeontology* 246 (Cambridge Univ. Press, 1994).
41. Zhou, Z.-H. & Wang, Y. Vertebrate diversity of the Jehol Biota as compared with other Lagerstätten. *Sci. China Earth Sci.* **53**, 1894–1907 (2010).
42. Wang, X.-L., Kellner, A. W. A., Zhou, Z.-H. & Campos, D. de A. Pterosaur diversity and faunal turnover in Cretaceous terrestrial ecosystems in China. *Nature* **437**, 875–879 (2005).
43. Kellner, A. W. A. Remarks on pterosaur taphonomy and paleoecology. *Acta Geol. Leopold.* **17**, 175–189 (1994).
44. Wang, X.-L. & Zhou, Z.-H. Pterosaur assemblages of the Jehol Biota and their implication for the Early Cretaceous pterosaur radiation. *Geol. J.* **41**, 405–418 (2006).
45. Zhou, Z.-H., Clarke, J. A. & Zhang, F.-C. *Archaeoraptor's* better half. *Nature* **420**, 285 (2002).
46. Brown, J. H. *Macroecology* 284 (Univ. of Chicago Press, 1997).
47. Owens, I. P. F. & Bennett, P. M. Ecological basis of extinction risk in birds: habitat loss versus human persecution and introduced predators. *Proc. Natl Acad. Sci. USA* **97**, 12144–12148 (2000).
48. Cardillo, M. *et al.* Multiple causes of high extinction risk in large mammal species. *Science* **309**, 1239–1241 (2005).
49. Longrich, N. R., Bhullar, B. -A. S. & Gauthier, J. A. Mass extinction of lizards and snakes at the Cretaceous–Paleogene boundary. *Proc. Natl Acad. Sci. USA* **109**, 21396–21401 (2012).
50. Wilson, G. P. Mammals across the K/Pg boundary in northeastern Montana, USA: dental morphology and body-size patterns reveal extinction selectivity and immigrant-fueled ecospace filling. *Paleobiology* **39**, 429–469 (2013).
51. Core Team., R. R: a language and environment for statistical computing. Foundation for Statistical Computing, Vienna, Austria <http://www.R-project.org> (2013).
52. Andres, B. & Myers, T. S. Lone Star pterosaurs. *T. R. Soc. Edin.-Earth* **103**, 1–16 (2013).
53. Bapst, D. W. Paleotree: an R package for paleontological and phylogenetic analyses of evolution. *Methods Ecol. Evol.* **3**, 803–807 (2012).
54. Gradstein, F. M., Ogg, J. G., Schmitz, M. D. & Ogg, G. M. *The Geologic Timescale 2012. Vol 2*, 1144 (Elsevier, 2012).
55. Grafen, A. The phylogenetic regression. *Philos. T. R. Soc. B* **326**, 119–157 (1989).
56. Martins, E. P. & Hansen, T. F. Phylogenies and the comparative method: a general approach to incorporating phylogenetic information into the analysis of interspecific data. *Am. Nat.* **149**, 646–667 (1997).
57. Paradis, E., Claude, J. & Strimmer, K. APE: analysis of phylogenetics and evolution in R language. *Bioinformatics* **20**, 289–290 (2004).
58. Pinheiro, J., Bates, D., DebRoy, S. & Sarkar, D.R Development Core Team. nlme: linear and nonlinear mixed effects models. R package version 3.1-109 (2013).
59. Sugiura, N. Further analysis of data by Akaike's information criterion and the finite corrections. *Commun. Stat. A Theor. Methods* **7**, 13–26 (1978).
60. Burnham, K. P. & Anderson, D. R. *Model Selection and Multimodel Inference* 875 (Springer, 2004).
61. Pagel, M. Inferring the historical patterns of biological evolution. *Nature* **401**, 877–884 (1999).
62. Garland, Jr. T. & Ives, A. R. Using the past to predict the present: confidence intervals for regression equations in phylogenetic comparative methods. *Am. Nat.* **155**, 346–363 (2000).
63. Wang, X.-L., Zhou, Z.-H., Zhang, F.-C. & Xu, X. A nearly complete articulated rhamphorhynchoid pterosaur with exceptionally well-preserved wing membranes and 'hairs' from Inner Mongolia, northeast China. *China Sci. Bull.* **47**, 226–230 (2002).
64. Bennett, S. C. Year-classes of pterosaurs from the Solnhofen Limestone of Germany: taxonomic and systematic implications. *J. Vert. Paleontol.* **16**, 432–444 (1996).
65. Dalla Vecchia, F. M. New morphological observations on Triassic pterosaurs. *Geol. Soc. London Spec. Pub.* **217**, 23–44 (2003).
66. Felsenstein, J. Phylogenies and the comparative method. *Am. Nat.* **125**, 1–15 (1985).
67. Beaulieu, J. M., Jhwueng, D.-C., Boettiger, C. & O'Meara, B. C. Modelling stabilizing selection: expanding the Ornstein-Uhlenbeck model of adaptive evolution. *Evolution* **66**, 2369–2383 (2012).
68. Butler, M. A. & King, A. A. Phylogenetic comparative analysis: a modelling approach for adaptive evolution. *Am. Nat.* **164**, 683–695 (2004).
69. Harmon, L. J., Weir, J. T., Brock, C. D., Glor, R. E. & Challenger, W. GEIGER: investigating evolutionary radiations. *Bioinformatics* **24**, 129–131 (2008).
70. Revell, L. J. phytools: an R package for phylogenetic comparative biology (and other things). *Methods Ecol. Evol.* **3**, 217–223 (2012).

## Acknowledgements

We thank Jeremy Beaulieu and Tony Ives for methodological advice.

## Author contributions

R.B.J.B., A.G. and R.J.B. designed the research; and R.B.J.B. performed the analyses and assembled the bird data set. All authors contributed to the pterosaur data set and to writing the manuscript.

## Additional information

**Supplementary Information** accompanies this paper at <http://www.nature.com/naturecommunications>

**Competing financial interests:** The authors declare no competing financial interests.

**Reprints and permission** information is available online at <http://npg.nature.com/reprintsandpermissions/>

**How to cite this article:** Benson, R. B. J. *et al.* Competition and constraint drove Cope's rule in the evolution of giant flying reptiles. *Nat. Commun.* 5:3567 doi: 10.1038/ncomms4567 (2014).



This work is licensed under a Creative Commons Attribution 3.0 Unported License. The images or other third party material in this article are included in the article's Creative Commons license, unless indicated otherwise in the credit line; if the material is not included under the Creative Commons license, users will need to obtain permission from the license holder to reproduce the material. To view a copy of this license, visit <http://creativecommons.org/licenses/by/3.0/>