

Primitive neuroectodermal tumor (PNET) of the lung in an adult woman

Gachechiladze, Mariam; ěkarda, Josef; Ibrahim, Maha; Tichý, Tomáě; Flodr, Patrik; Latálová, Pavla; Ehrmann, Jiěí; Trojanec, Radek; Koláě, Zdenek

DOI:

[10.1186/1477-7819-12-374](https://doi.org/10.1186/1477-7819-12-374)

License:

Creative Commons: Attribution (CC BY)

Document Version

Publisher's PDF, also known as Version of record

Citation for published version (Harvard):

Gachechiladze, M, ěkarda, J, Ibrahim, M, Tichý, T, Flodr, P, Latálová, P, Ehrmann, J, Trojanec, R & Koláě, Z 2014, 'Primitive neuroectodermal tumor (PNET) of the lung in an adult woman', *World Journal of Surgical Oncology*, vol. 12, no. 1, 374. <https://doi.org/10.1186/1477-7819-12-374>

[Link to publication on Research at Birmingham portal](#)

Publisher Rights Statement:

Eligibility for repository : checked 19/02/2015

General rights

Unless a licence is specified above, all rights (including copyright and moral rights) in this document are retained by the authors and/or the copyright holders. The express permission of the copyright holder must be obtained for any use of this material other than for purposes permitted by law.

- Users may freely distribute the URL that is used to identify this publication.
- Users may download and/or print one copy of the publication from the University of Birmingham research portal for the purpose of private study or non-commercial research.
- User may use extracts from the document in line with the concept of 'fair dealing' under the Copyright, Designs and Patents Act 1988 (?)
- Users may not further distribute the material nor use it for the purposes of commercial gain.

Where a licence is displayed above, please note the terms and conditions of the licence govern your use of this document.

When citing, please reference the published version.

Take down policy

While the University of Birmingham exercises care and attention in making items available there are rare occasions when an item has been uploaded in error or has been deemed to be commercially or otherwise sensitive.

If you believe that this is the case for this document, please contact UBIRA@lists.bham.ac.uk providing details and we will remove access to the work immediately and investigate.



CASE REPORT

Open Access

Primitive neuroectodermal tumor (PNET) of the lung in an adult woman

Mariam Gachechiladze^{1*†}, Josef Škarda^{1*†}, Maha Ibrahim², Tomáš Tichý¹, Patrik Flodr¹, Pavla Latálová¹, Jiří Ehrmann¹, Radek Trojanec¹ and Zdenek Kolář¹

Abstract

Primary primitive neuroectodermal tumors (PNETs) are extremely rare in the lung and especially in adult women. We describe a case of PNET of the lung with aggressive behavior in 31-year-old woman. Diagnosis was based on histopathological and immunohistochemical studies, and confirmed by molecular genetic analysis of chromosome rearrangements in the *EWSR1* gene region. Clinical follow-up, post-mortem findings, and differential diagnosis are also discussed.

Keywords: Primitive neuroectodermal tumor, Ewing's sarcoma, Lung, Differential diagnosis

Background

Primitive neuroectodermal tumors (PNETs) are small-blue-round-cell malignancies, predominantly arising in the soft tissues or bones in children and young adults [1]. PNETs belong to the Ewing's sarcoma family of tumors, based on shared chromosomal translocation at *EWSR1* (Ewing sarcoma breakpoint region 1). Primary PNETs of the lung are extremely rare, with fewer than 20 cases having been described in English literature to date. Most of these are adolescent or young adult patients, with a male predominance [2-13]. In this case report, we describe a PNET of lung in an adult woman, having a rapid progression of the disease and lethal outcome.

Case presentation

A 31-year-old woman presented with a 10-month history of right hemithoracic pain and persistent cough, with relative improvement during the day and relative worsening at night. She also reported a weight loss of approximately 11 kg. Computed tomography (CT) and positron emission tomography (PET) imaging of the thorax revealed non-homogeneous opacities and increased accumulation of glucose in the right pleural cavity. Right pleural deposits,

found during examination, suggested the presence of viable tumor masses. Directed transparietal biopsy, taken from the glucose accumulation sites seen on the PET scan, was performed.

Histopathological examination of the biopsy specimens revealed highly cellular neoplastic tissue. The tumor cells were discohesive, showed scant basophilic cytoplasm, and ovoid rather than polygonal nuclei, fine granular chromatin texture, and marked nucleoli. Some of the nuclei were hyperchromatic. There were no evidence of mitotic or apoptotic activity. No obvious signs of necrosis were present, and the stromal tissue adjacent to the tumor was characterized by low cellularity. In some areas, small Homer-Wright rosette-like structures were present. Overall, morphological characteristics were consistent with small-blue-round-cell neoplasm (Figure 1a, b, c).

A range of immunohistochemical markers were employed for final diagnosis (Table 1), including CD4, CD8, CD10, CD15, CD20, CD34, leukocyte common antigen (CD45), CD56, CD99, cytokeratin 7 (CK7), vimentin, thyroid transcription factor (TTF), synaptophysin, chromogranin, anti-cytokeratin cocktail, High Molecular weight cytokeratin, calretinin, h-caldesmon, smooth muscle actin (SMA) and mesothelial cell marker (antibody clone: HBME-1). Detailed characteristics and dilutions of antibodies are provided in Additional file 1: Table S1. Immunohistochemical study showed Strong positivity for CD99 (Figure 1d). The neoplastic cells were also focally positive for CD56 and weekly positive for Vimentin (Figure 1e, f). Expression

* Correspondence: marjammg@gmail.com; jojos@email.cz

†Equal contributors

¹Department of Clinical and Molecular Pathology and Institute of Molecular and Translational Medicine (IMTM), Faculty of Medicine and Dentistry, Palacky University, Hněvotínská 3, 775 15 Olomouc, Czech Republic
Full list of author information is available at the end of the article

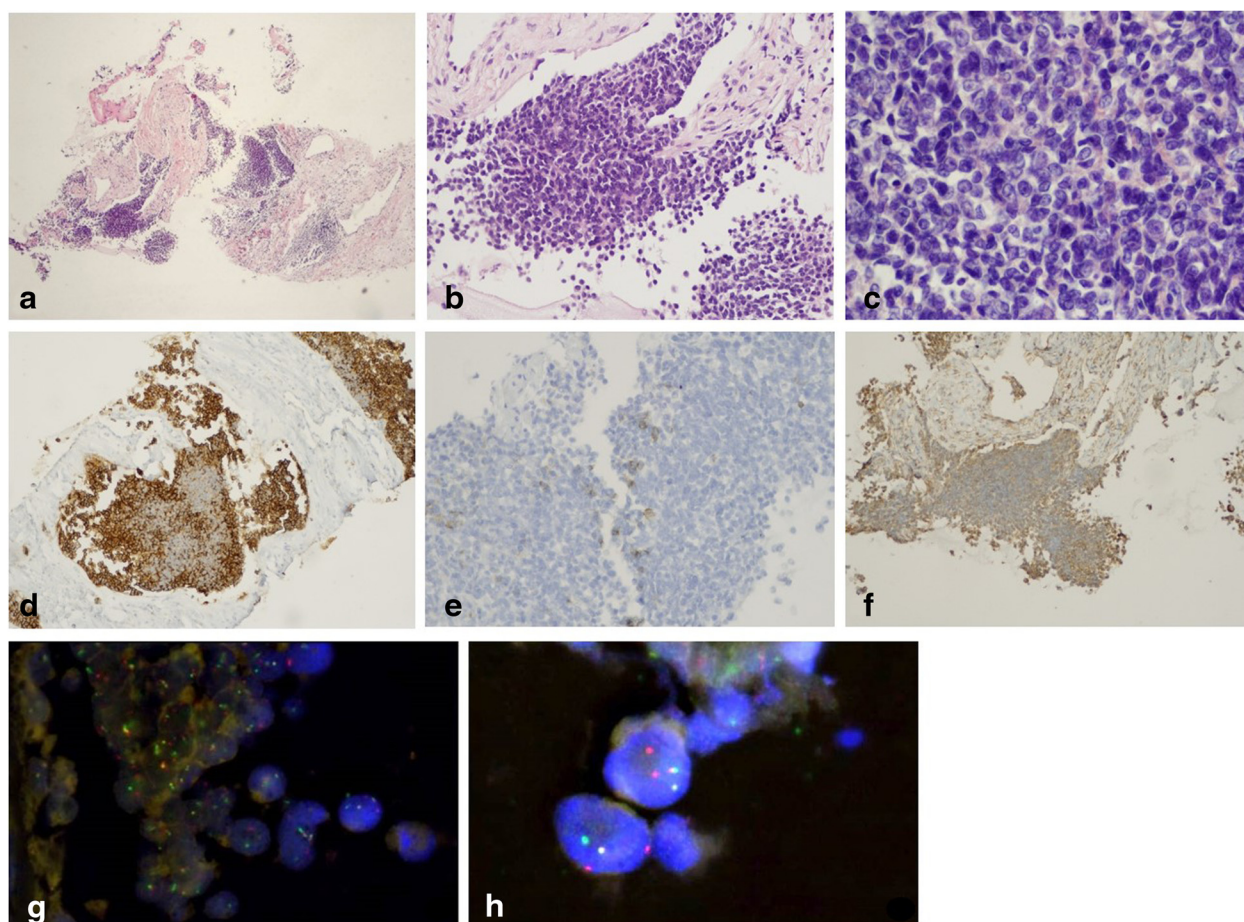


Figure 1 Biopsy specimen from primitive neuroectodermal tumor (PNET) of the lung. **(a)** Areas of highly cellular neoplastic tissue (H&E, magnification $\times 40$), **(b)** discohesive growth of small, blue, round to oval cells, characteristic of pulmonary PNET (H&E, magnification $\times 200$). **(c)** Characteristic scant, basophilic cytoplasm, ovoid or polygonal nuclei, fine granular chromatin texture and marked nucleoli. Some nuclei were hyperchromatic. H&E, magnification $\times 400$. **(d)** CD99 membranous expression, characteristic of PNET (magnification $\times 100$), and expression of **(e)** CD56 (magnification $\times 100$) and **(f)** vimentin (magnification $\times 100$). **(g, h)** Fluorescent *in situ* hybridization of *EWSR1* gene: fusion signals: yellow or red/green double spot indicates intact *EWSR1*, separate green and red signals indicate translocation. Magnification **(g)** $\times 600$, **(h)** $\times 1000$.

of TTF was extremely weak. All other markers were negative. Proliferative activity, detected by Ki-67 index, was estimated as 5 to 10%. Immunophenotype was characteristic for PNET of the lung.

Chromosome rearrangement in the *EWSR1* gene was detected by fluorescent *in situ* hybridization assay (FISH) to confirm the diagnosis. The results of FISH analysis showed translocation of *EWSR1* in 30% of the tumor cells (Figure 1g, h). More detailed description of molecular analysis is provided in Additional file 1: S2.

Diagnosis was followed by two series of chemotherapy (doxorubicin, cyclophosphamide and vincristine) for 2 days. After 1 month, secondary anemia developed. The patient was treated with hemosubstitution, but her health deteriorated and she died. Post-mortem examination revealed a tumor in the right lung, 210 \times 115 \times 60 mm in size. The cut surface of the tumor was pinkish colored and areas of hemorrhage were present. Post-mortem and subsequent

histopathological examination showed generalized PNET, (Additional file 1: Figure S1), with tumor spread to the mediastinal lymph nodes and subhepatic area. Acute catarrhal purulent bronchopneumonia was present in the left lung. The cause of death was given as cardiorespiratory failure.

Discussion

PNETs are highly aggressive, usually lethal neoplasms. Although the morphological and immunohistochemical features of pulmonary PNET are not different from its counterparts of other origin, special diagnostic considerations of other tumors with small, blue, round cell morphology and primarily small cell carcinoma of the lung is necessary. Small cell carcinomas usually present at older ages, and usually with a history of smoking, yet they and PNET may exhibit similar histological features. Some PNETs may even show reactivity for cytokeratin and

Table 1 Differential diagnostic markers of small-blue- round-cell tumors in lung

IHC markers	CD99	CD56	Vim	TTF	Syn	Chr	CD34	LCA (CD45)	CD10	CD15	CK7	AE1/AE3	CK(HMW)	Calret	h-Cal	Desmin	SMA	HBME-1
Tumor types																		
PNET	++	+/-	+	-	+/-	-	-	-	-	-	-	+/-	-	-	-	-	-	-
Desmoplastic small round cell tumor of lung	-	-	++	-	-	-	-	-	-	-	-	++	-	-	-	-	-	-
Small cell carcinoma of the lung	-	+	-	++	+	+	-	-	-	-	-	++	-	+	-	-	-	-
Lung carcinoid	-	-	-	+	++	++	-	-	-	-	-	++	-	-	-	-	-	-
Metastasis of small cell carcinomas of other origin	-	+/-	-	+	-	-	-	-	-	-	+	+	+	-	-	-	-	-
Pulmonary rhabdomyosarcoma	-	-	-	-	-	-	-	-	-	-	-	-	-	-	+	+	-	-
NHL	+/-	-	-	-	-	-	-	++	+	+	-	-	-	-	-	-	-	-

Calret, calretinin; Chr, chromogranin; CK7, cytokeratin 7; CK(HMW), high molecular weight cytokeratin; HBME-1 – mesothelial cell marker; h-Cal, h-caldesmon; IHC, immunohistochemistry; LCA, leukocyte common antigen; NHL, non-Hodgkin's lymphoma; PNET, primitive neuroectodermal tumor; SMA, smooth muscle actin; Syn, Synaphtophysin; TTF, thyroid transcription factor; Vim, vimentin.

synaptophysin [11,12]. Hence, a wider range of immunohistochemical markers, including chromogranin and TTF-1 to support a diagnosis of small cell carcinoma, and CD99, vimentin, or FLI1 for PNET should be used for the differential diagnosis. Lung carcinoids share a similar morphology to PNET and form rosettes. However, the detection of chromogranin, synaptophysin, and neuron specific enolase is necessary to confirm the diagnosis of lung carcinoid. In addition, differential diagnosis is necessary to distinguish PNET from metastasis of small cell carcinomas of other origin. Another important diagnostic consideration for both children and adult patients is pulmonary rhabdomyosarcoma, which is also a rare tumor and belongs to the group of small, blue, round-cell tumors. Muscle-specific markers such as desmin, myogenin, or myo-D1, characteristic of rhabdomyosarcoma, should be included in the immunohistochemical study [10]. Lymphoblastic lymphoma and the leukemia group of tumors are also an important diagnostic consideration, as they can be positive for CD99 and negative for epithelial markers. Precursor B-cell lymphoblastic lymphoma is an especially important mimicker of PNET. Like PNET, the malignant cells are small and uniform and have a diffusely infiltrative growth pattern, and they can even form rosette-like structures. Immunohistochemically, precursor B-cell lymphoblastic lymphoma is positive for CD99, and often nonreactive or only focally positive for conventional lymphoma markers such as LCA, CD20, and CD3. Immunopositivity for CD45, CD43, and CD79a are useful for separating lymphoblastic lymphoma/leukemia from PNET [14]. Finally, to confirm the diagnosis of PNET, it is crucial to detect pass break or amplification of *EWSR1* [15]. However, because of the rarity of primary pulmonary PNETs, it is also important to exclude the possibility of metastasis from a bone or soft tissue primary to the lung. Detailed examination by clinical and radiological means should be performed to rule out metastatic tumor from an extrapulmonary primary site.

Conclusion

Pulmonary PNET should be considered in the differential diagnosis of thoracic tumors, regardless of the age and sex of the patient. Although not specific, CD99 and vimentin are important immunohistochemical markers for diagnosis of PNET. However, a wider range of antibodies should be employed in order to exclude other diagnostic possibilities. Detection of *EWSR1* gene translocation or amplification is the most reliable marker of PNET, including those of pulmonary origin.

Consent

Oral informed consent was obtained from the responsible person for publication of this Case report and any accompanying images.

Additional file

Additional file 1: Supplementary materials.

Competing interests

The authors declare that they have no competing interests.

Authors' contributions

JS, TT, PF, PL, JE evaluated biopsy specimens, chose the panel of antibodies for immunohistochemical study, evaluated the staining and made final agreed report. JS and MG performed the post-mortem examination. MG analyzed previous published data and wrote the manuscript. MI made corrections in written manuscript and assist to write the discussion, particularly the differential diagnostic considerations of PNET. RT performed fluorescent in situ hybridization (FISH) analysis of *EWSR1*. All authors read and approved the final manuscript.

Acknowledgements

This publication was supported by grants NT/13569 from the Czech Ministry of Health and NPU I LO1304 from the Czech Ministry of Education. MG was also supported by student's grant LF_2014_003.

Author details

¹Department of Clinical and Molecular Pathology and Institute of Molecular and Translational Medicine (IMTM), Faculty of Medicine and Dentistry, Palacky University, Hněvotínská 3, 775 15 Olomouc, Czech Republic. ²School of Cancer Sciences, The University of Birmingham, Edgbaston, B15 2TT Birmingham, UK.

Received: 23 May 2014 Accepted: 6 November 2014
Published: 5 December 2014

References

- Weiss SW, Goldblum JR: **Primitive neuroectodermal tumors and related lesions.** In *Soft Tissue Tumors*. 5th edition. Edited by Weiss SW, Goldblum JR. Maryland Heights: Mosby Elsevier; 2008:945–987.
- Tsuji S, Hisaoka M, Morimitsu Y, Hashimoto H, Jimi A, Watanabe J, Eguchi H, Kaneko Y: **Peripheral primitive neuroectodermal tumour of the lung: report of two cases.** *Histopathology* 1998, **33**:369–374.
- Imamura F, Funakoshi T, Nakamura S, Mano M, Kodama K, Horai T: **Primary primitive neuroectodermal tumor of the lung: report of two cases.** *Lung Cancer* 2000, **27**:55–604.
- Baumgartner FJ, Omari BO, French SW: **Primitive neuroectodermal tumor of the pulmonary hilum in an adult.** *Ann Thorac Surg* 2001, **72**:285–287.
- Kahn AG, Avagnina A, Nazar J, Elsner B: **Primitive neuroectodermal tumor of the lung.** *Arch Pathol Lab Med* 2001, **125**:397–399.
- Mikami Y, Nakajima M, Hashimoto H, Irei I, Matsushima T, Kawabata S, Manabe T: **Primary pulmonary primitive neuroectodermal tumor (PNET). A case report.** *Pathol Res Pract* 2001, **197**:113–119.
- Takahashi D, Nagayama J, Nagatoshi Y, Inagaki J, Nishiyama K, Yokoyama R, Moriyasu Y, Okada K, Okamura J: **Primary Ewing's sarcoma family tumors of the lung: a case report and review of the literature.** *Jpn J Clin Oncol* 2007, **137**:874–877.
- Demir A, Dagoglu N, Gunluoglu MZ, Turna A, Dizdar Y, Kaynak K, Dilege S, Mandel NM, Yilmazbayhan D, Dincer SI, Gurses A: **Surgical treatment and prognosis of primitive neuroectodermal tumors of the thorax.** *J Thorac Oncol* 2009, **14**:185–192.
- Hancorn K, Sharma A, Shackcloth M: **Primary extraskeletal Ewing's sarcoma of the lung.** *Interact Cardiovasc Thorac Surg* 2010, **10**:803–804.
- Weissferdt A, Moran CA: **Primary pulmonary primitive neuroectodermal tumor (PNET): a clinicopathological and immunohistochemical study of six cases.** *Lung* 2012, **190**(6):677–683.
- Tongaonkar HB, Thyaviahally YB, Gupta S, Kurkure PA, Amare P, Muckaden MA, Desai SB: **Primitive neuroectodermal tumor of the kidney: a single institute series of 16 patients.** *Urology* 2008, **71**:292–296.
- Charney DA, Ghali VS, Charney JM, Teplitz C: **Primitive neuroectodermal tumor of the myocardium: a case report, review of the literature, immunohistochemical, and ultrastructural study.** *Hum Pathol* 1996, **27**:1365–1369.
- Askin FB, Rosai J, Sibley RK, Dehner LP, McAlister WH: **Malignant small cell tumor of the thoracopulmonary region in childhood: a distinctive**

clinicopathologic entity of uncertain histogenesis. *Cancer* 1979, **43**:2438–2451.

14. Lucas DR, Bentley G, Dan ME, Tabaczka P, Janet M, Poulik JM, Michael MP: **Ewing sarcoma vs lymphoblastic lymphoma a comparative immunohistochemical study.** *Am J Clin Pathol* 2001, **115**:11–17.
15. Gamberi G, Cocchi S, Benini S, Magagnoli G, Morandi L, Kreshak J, Gambarotti M, Picci P, Zanella L, Alberghini M: **Molecular diagnosis in Ewing family tumors.** *J Mol Diagn* 2011, **13**:3.

doi:10.1186/1477-7819-12-374

Cite this article as: Gachechiladze *et al.*: Primitive neuroectodermal tumor (PNET) of the lung in an adult woman. *World Journal of Surgical Oncology* 2014 **12**:374.

**Submit your next manuscript to BioMed Central
and take full advantage of:**

- Convenient online submission
- Thorough peer review
- No space constraints or color figure charges
- Immediate publication on acceptance
- Inclusion in PubMed, CAS, Scopus and Google Scholar
- Research which is freely available for redistribution

Submit your manuscript at
www.biomedcentral.com/submit

