

An approach to prioritization of medical devices in low-income countries: an example based on the Republic of South Sudan

Lilford, Richard J; Burn, Samantha L; Diaconu, Karin D; Lilford, Peter; Chilton, Peter J; Bion, Victoria; Cummins, Carole; Manaseki-holland, Semira

DOI:

[10.1186/s12962-014-0027-3](https://doi.org/10.1186/s12962-014-0027-3)

License:

Creative Commons: Attribution (CC BY)

Document Version

Publisher's PDF, also known as Version of record

Citation for published version (Harvard):

Lilford, RJ, Burn, SL, Diaconu, KD, Lilford, P, Chilton, PJ, Bion, V, Cummins, C & Manaseki-holland, S 2015, 'An approach to prioritization of medical devices in low-income countries: an example based on the Republic of South Sudan', *Cost Effectiveness and Resource Allocation*, vol. 13, no. 1, 2. <https://doi.org/10.1186/s12962-014-0027-3>

[Link to publication on Research at Birmingham portal](#)

Publisher Rights Statement:

Eligibility for repository : checked 30/01/2015

General rights

Unless a licence is specified above, all rights (including copyright and moral rights) in this document are retained by the authors and/or the copyright holders. The express permission of the copyright holder must be obtained for any use of this material other than for purposes permitted by law.

- Users may freely distribute the URL that is used to identify this publication.
- Users may download and/or print one copy of the publication from the University of Birmingham research portal for the purpose of private study or non-commercial research.
- User may use extracts from the document in line with the concept of 'fair dealing' under the Copyright, Designs and Patents Act 1988 (?)
- Users may not further distribute the material nor use it for the purposes of commercial gain.

Where a licence is displayed above, please note the terms and conditions of the licence govern your use of this document.

When citing, please reference the published version.

Take down policy

While the University of Birmingham exercises care and attention in making items available there are rare occasions when an item has been uploaded in error or has been deemed to be commercially or otherwise sensitive.

If you believe that this is the case for this document, please contact UBIRA@lists.bham.ac.uk providing details and we will remove access to the work immediately and investigate.

RESEARCH

Open Access

An approach to prioritization of medical devices in low-income countries: an example based on the Republic of South Sudan

Richard J Lilford^{1,2*}, Samantha L Burn¹, Karin D Diaconu¹, Peter Lilford³, Peter J Chilton¹, Victoria Bion⁴, Carole Cummins¹ and Semira Manaseki-Holland¹

Abstract

Background: Efficient and evidence-based medical device and equipment prioritization is of particular importance in low-income countries due to constraints in financing capacity, physical infrastructure and human resource capabilities.

Methods: This paper outlines a medical device prioritization method developed in first instance for the Republic of South Sudan. The simple algorithm offered here is a starting point for procurement and selection of medical devices and can be regarded as a screening test for those that require more labour intensive health economic modelling.

Conclusions: A heuristic method, such as the one presented here, is appropriate for reaching many medical device prioritization decisions in low-income settings. Further investment and purchasing decisions that cannot be reached so simply require more complex health economic modelling approaches.

Keywords: Medical devices, Equipment, Prioritization, Purchasing, Selection, Low-income country

Background

This paper originated in a prioritization task assigned to Richard Lilford (RIL) by the Procurement Agent (Frannan International) for the pre-independence government of South Sudan in 2010. At that time South Sudan had recently emerged from Africa's longest civil war. It was moving towards independence (which it achieved in 2011) and an interim government was in place. The country had some of the worst health indicators in the world with high infant and maternal mortality rates [1], endemic malaria, and a high prevalence of tuberculosis [2]. Health spending was low, amounting to US\$23 per capita (combining government and aid contributions) [3]. The interim government wished to replenish the depleted inventory of capital stock in the three major hospitals that fell under its direct control (Juba, Wau and Malakal). Each of these hospitals was connected to mains electricity supply, but this was

frequently interrupted, and while the hospitals had two generators, fuel supply and maintenance was intermittent. Supply chains for devices were unreliable and there was no capacity for on-site repairs. There was also a limited supply of skilled doctors with only 34 specialists [4] to serve a population of 10.9 million [5]. Against this background, the Department of Health commissioned a junior doctor, Jordan Lawrence, to visit each hospital and draw up a 'long list' of items nominated for procurement by clinical staff. The result was an unprioritized inventory of 258 devices, ranging from a corner cabinet to a magnetic resonance imaging (MRI) scanner (Additional file 1). This paper describes the method we developed to tackle the prioritization problem for devices. We developed a set of principles and hence a simple flow chart to help the prioritisation task and offer it here in the hope that it may be useful to others who have to adapt priorities for their specific localities.

* Correspondence: r.j.lilford@bham.ac.uk

¹Public Health, Epidemiology and Biostatistics, School of Health and Population Sciences, College of Dental and Medical Sciences, University of Birmingham, Edgbaston, West Midlands B15 2TT, UK

²Warwick Centre for Applied Health Research and Delivery, University of Warwick, Coventry CV4 7AL, UK

Full list of author information is available at the end of the article

Method development

It was immediately apparent that there was insufficient time and resource to carry out a cost-effectiveness analysis on all 258 of the requested items. In addition, it would be

difficult to prioritize basic items such as syringes and needles on the basis of a formal economic model, such as those designed to estimate Disability Adjusted Life Years (DALYs) or Quality Adjusted Life Years (QALYs). A method was needed that could identify items for procurement based on informal judgment without the need to carry out a formal and time-consuming health economic evaluation. RJL developed a first draft of the method during his six-day sojourn in Juba in 2010 in response to the problem presented to him. He and his co-authors then developed the method further as follows.

A systematic review was conducted of the literature on device prioritization. [Work in progress: Diaconu K, Burn S, Chen Y-F, Manaseki-Holland S, Cummins C, Lilford R: "Methods for medical device and equipment procurement within low- and middle-income countries: Findings of a systematic literature review"]. We found many lists of devices considered essential for health facilities [6,7] or for packages of services, for example those covering maternal health and diagnosis of tuberculosis [8,9]. With a few exceptions (discussed below) these have been developed by professional consensus rather than an explicit health economic model. We also found decision frameworks, some incorporating health economic routines, for the development of composite services [10-12]. However, we did not find a simple framework or checklist that could have been deployed in the context of the assigned prioritization task.

The method was further refined iteratively on the basis of feedback following a presentation at an expert research workshop "Methods of Health Technology Assessment and Priority Medical Devices for low- and middle-income countries" (Hilton Metropole Hotel, Birmingham, UK, October 2013) and the World Health Organization (WHO) Second Global Forum on Medical Devices (Geneva, Switzerland, November 2013).

A framework for medical device prioritization in low-income settings

A number of principles could be derived on the basis of the literature review and the expert group described above. These principles are enshrined in the steps within the framework.

The screening algorithm is comprised of five decision-gates, each based on a defensible principle. The framework is represented in Figure 1, where we give examples of devices excluded or included at different decision-gates. We illustrate our approach with respect to thirteen devices from the long list – Table 1.

First decision-gate: is the device a "bare essential"?

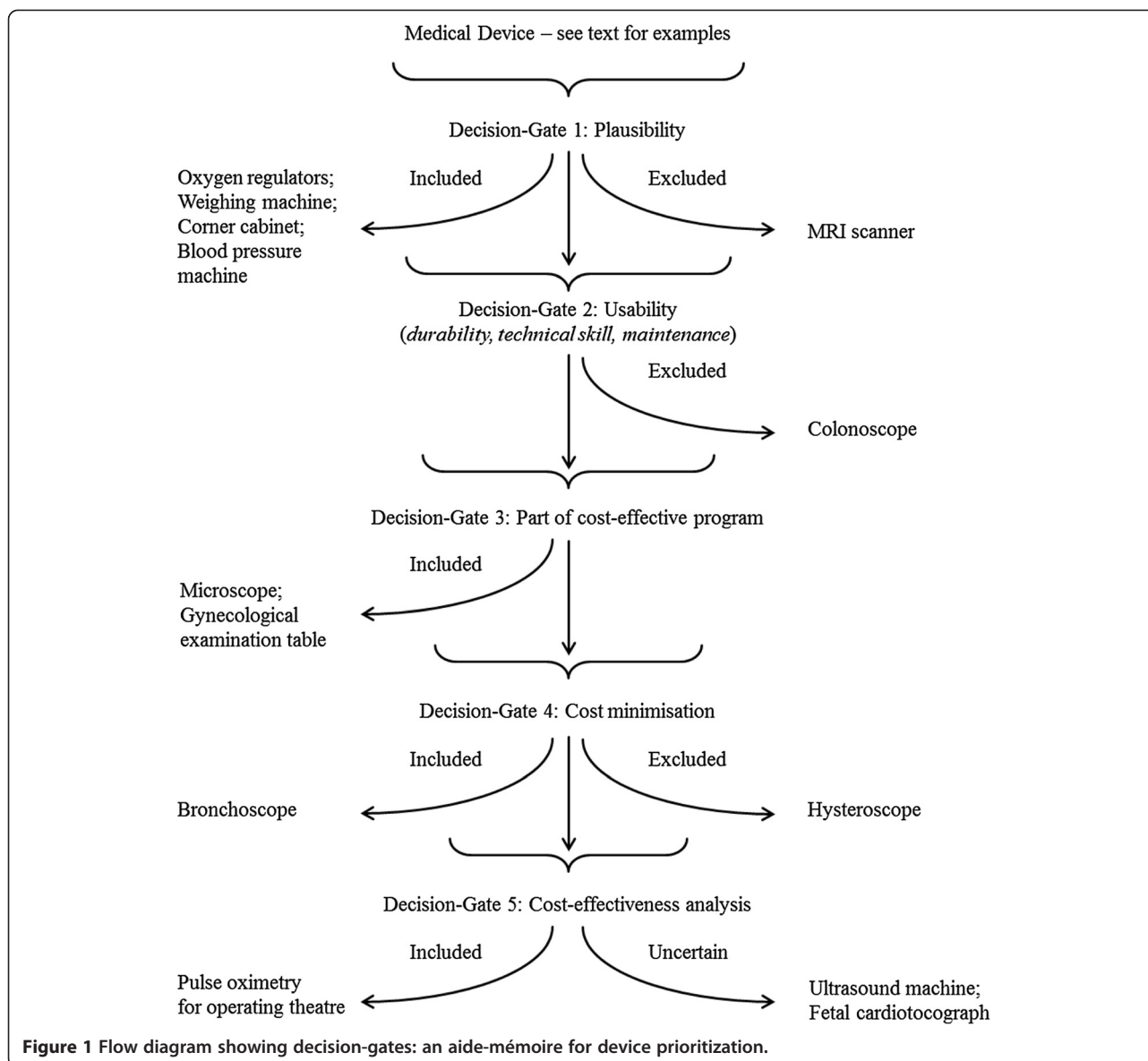
Some items can be included on the grounds that they are bare essentials. More formally, items in this category share three features. First, they are simple devices that do not require special skills and do not rely on a continuous

external power supply (factors considered in more detail with respect to the following decision-gate). Second, their cost is low relative even to other things that are purchased in the country concerned; more formally they are judged to fall under the cost-effectiveness threshold for the country concerned – a point to which we return. Third, their benefits are spread across many situations, disease classes and patient types, as in the case of surgical gloves, needles and syringes. The cost of calibrating, valuing and modelling such an array of technology applications is judged to be incommensurate with the cost of doing so; nobody uses health economic models to prioritise this type of device. The weighing machine, corner cabinet, blood pressure machine and oxygen regulator were selected on these grounds. Many items in this category are included in the WHO Core Medical Equipment list, but it is always important to customise selection for local contexts; as stated in the document "It is [...] impossible to make a list of core medical equipment which would be exhaustive and/or universally applicable" [13].

Second decision-gate: is the device usable?

Items that are not prioritised at the first decision-gate are analysed as to how they are likely to fare in the proposed environment. That is to say, based on local knowledge, can the proposed device be supported by the following:

1. The physical infrastructure currently available, or credibly attainable, by the time the technology is deployed. Such infrastructure includes electricity supply, running water, temperature control, storage space, safety factors (especially for radiology equipment) and sterilisation.
2. The human resources that are, or realistically could be, in place by the time the technology is deployed [14,15]. Staff in low-income countries may not have had an opportunity to acquire skills to use the requested equipment safely. The salient question under these circumstances is whether the expertise could be acquired within the implementation time frame. If this is unlikely or implausible, then the decision should be deferred for a future funding round, typically a year later. Use of some equipment items may involve relatively minor augmentation of existing skill-sets and hence may be rapidly acquired. In such cases the technology would not be screened out at this stage, but the cost of training – including the opportunity cost of any absence from work – should be included in the value for money consideration of the type described in a later section.
3. The supply chain and facilities to maintain equipment are additionally important since much equipment in low-income countries falls into disuse for want of the



commercial and local technical infrastructure to provide the consumables and parts needed to keep the item in use or to maintain it in serviceable condition [16,17]. This problem can sometimes be ameliorated by careful specification of equipment [18]. For example, an electrocardiogram (ECG) with a display function remains useful even if the paper supply fails. Again, if the problem can be overcome, then the technology should not be screened out at this stage, but any additional costs to circumnavigate problems in the supply chain or send items for repair abroad must be factored into the decision.

The requested colonoscope fell short of this set of criteria since staff with the requisite training or experience to rapidly acquire the necessary skills were simply not available.

Third decision-gate: is a cheaper alternative available?

In some cases it may be possible to identify an alternative device that does the job just as well, but at less cost than the device requested. One of the devices that found its way onto the list in South Sudan was a hysteroscope, with exclusion of endometrial cancer as its rationale. Examinations of existing literature reviews, [19-22] backed up by consultation with a local expert, showed that it is “dominated” by an alternative device, the Pipelle biopsy, which is equally effective (sensitive and specific) at a fraction of the cost. Not only is the Pipelle biopsy inexpensive (US\$9.35 per procedure) [23], but gynaecological and pathological expertise was available in South Sudan to both obtain and analyse samples. Since it saves on the cost of the existing method (dilation and curettage under general anaesthetic) this device is not just cost-effective,

Table 1 Approximate prices (US\$) for thirteen selected medical devices

Device	Example	Reported price	Approx. price (US\$)	Source
MRI Scanner		GBP 895,000	1,460,000	National Audit Office. Managing High Value Capital Equipment in the NHS in England. HC 822 Session 2010–2011. London: The Stationery Office. 2011*
Regulators for Oxygen Cylinders		KES 18,000	200	WHO Medical Equipment List for Typical District Hospital, Kenya, 2010**
Colonoscope			25,000	WHO Core Medical Equipment, 2011†
Hysteroscope	4 mm rigid hysteroscope Olympus Key Med	GBP 2,460	4,020	Marsh F, Kremer C, Duffy S. <i>BJOG</i> . 2004; 111: 243–8.
Fetal Cardiotocograph		EUR 14,900	19,120	Heintz E, Brodtkorb T, Nelson N, Levin L. <i>BJOG</i> . 2008;115:1676–87.
Bronchoscope			3,560	WHO Core Medical Equipment, 2011†
Pulse Oximeter for Operating Theatres	Lifebox		250	Lifebox‡
Weighing Machine (adult)		KES 9,800	110	WHO Medical Equipment List for Typical District Hospital, Kenya, 2010**
Corner Cabinet	Instrument cabinet	KES 50,000	560	WHO Medical Equipment List for Typical District Hospital, Kenya, 2010**
Ultrasound Machine			25,000	WHO Core Medical Equipment, 2011†
Blood Pressure Machine	Sphygmomanometer including cuff	EU 12.40	16	Action Medeor Price List 2014§
Microscope	ZEISS binocular with 4 objectives, 220 V	EUR 1338.6	1,720	Action Medeor Price List 2014§
Gynecological Examination Table		KES 70,000	780	WHO Medical Equipment List for Typical District Hospital, Kenya, 2010**

All non-USD prices converted using xe.com.

*<http://www.nao.org.uk/wp-content/uploads/2011/03/1011822.pdf>.

**http://www.who.int/medical_devices/survey_resources/medical_devices_by_facility_provincial_hospitals_kenya.pdf.

†http://whqlibdoc.who.int/hq/2011/WHO_HSS_EHT_DIM_11.03_eng.pdf.

‡<http://www.lifebox.org/>

§http://en.medeor.de/images/meedor-market/price-indicator/2014/09/Equipment_EN_05-09-2014.xls.

but cost-releasing. A search for alternatives may prompt innovation, such as use of mosquito net mesh for hernia repair [24]. Once a ‘dominant’ device has been identified, it should supplant the original item in the decision-making framework.

A device also minimises costs when it will result in net cost reductions as a result of savings downstream. A bronchoscope was requested in South Sudan for removal of foreign bodies in children. Since it is very difficult to leave such a foreign body in situ in the near certain knowledge that the affected child would become very ill and die, such patients are sent to Kampala for treatment. Given the documented frequency with which this occurred, it could be shown that the procurement of an in-expensive (rigid) bronchoscope was a cost-minimising solution, at least if parents’ out of pocket expenses are considered.

Fourth decision-gate: is the device a component of a multi-component service that has itself been shown to be cost-effective in low-income settings?

Devices are included if they are a necessary (and typically small) component of a broader service tackling a problem

such as tuberculosis or HIV, where the service, *as a whole*, has been shown to be cost-effective. It makes no sense to exclude an essential device where the other service components are, or shortly will be, in place. For example, the requested microscope is an essential component of strategies for tuberculosis control deemed cost-effective by WHO-CHOICE standards, [25] while a gynecological examination table is an essential component of cervical cancer screening programs that have also been shown to be cost-effective in low-income countries [26].

Fifth decision-gate: is the device cost-effective?

Devices that have not been selected or excluded at a previous decision-gate must now be selected or excluded on the basis of costs relative to benefits. If time and resources to construct a health economic model are not available, then an intuitive decision must be made. Either way, the decision is underpinned by the theory that a device is not cost-effective if it displaces a service that offers more value per unit of currency. This threshold is usually based on an external reference standard and WHO deems a ratio of 1 × GDP/capita

per DALY averted as “highly cost-effective”, while $3 \times$ GDP/capita is regarded as “cost-effective” [25].

If resources are available, then a formal cost-effectiveness analysis should be considered. The methodology for such an analysis has been explicated for high-income countries by organisations such as the National Institute for Health and Care Excellence (NICE) in England and the Canadian Agency for Drugs and Technologies in Health (CADTH) [27,28]. In addition, the WHO has produced a detailed and intellectually rigorous tool-kit for low-income settings [25,29]. Models need to be populated with data and good evidence may be hard to find in a low-income context with the result that cost-effectiveness calculations have wide margins of error. The WHO guideline recommends assuming technology is to be deployed at 80% of its capacity, but devices are often rendered unserviceable in their expected lifetimes due to a lack of maintenance services. It may therefore be appropriate to make a larger adjustment to allow for maintenance, repairs and downtime for many devices. Cost-effectiveness models can be assigned to one of two broad classes. The first class is a ‘sectoral’ analysis, whereby many interventions are compared in order to select a mix that maximises health benefit. One advantage of this approach is that it does not assume that current practice is itself cost-effective, and it is the method preferred by the WHO guide [25]. The alternative method is based on a calculation of the incremental cost-effectiveness of a particular intervention given existing practice. The result is compared with an external reference standard, as discussed above.

We used the latter method to evaluate the pulse oximeter for operating theatre use, showing that it is cost-effective under a very wide range of plausible assumptions [30]. The other devices that reached this point have not been explicitly examined; we are in the process of constructing a model for the fetal cardiotocograph, while the hospital has acquired an ultrasound machine on the basis of an implicit judgment that it was cost-effective, and the MRI machine was judged cost-ineffective on the basis that it could not clear the cost per DALY mentioned above (and the practical point that it would consume all of the available budget in a hospital where total national health expenditure was less than US\$30 per capita per year).

Discussion

The method we invoke here is based on two simple ideas, the first that applies to all treatments, and the second that is more specific to devices:

1. It is not cost-effective to do a cost-effectiveness analysis in all cases – some items, whether medicinal products or devices, can be ruled in or out on simple criteria at decision-gate one.
2. Devices are fraught with ‘usability’ problems relating to skill in use and maintenance, and decision-gate two is designed to weed out such devices. Even if the device is not actually eliminated on the basis of usability issues, ‘downtime’ should be allowed for in any model. This is recognised by the WHO who recommend that technology is assumed to operate at 80% capacity, but we argued above that this rule of thumb may be conservative, since 40% of devices in resource-poor settings fall into disuse [16]. Moreover, explicit consideration of this problem could provide a fine-tuned assessment of the proportion of time that a device may be out of commission in a local context, and this might be preferable to a ‘one size fits all’ estimate.

A third idea that may be relevant relates to the notion of ‘pro-technology bias’, where medical staff may request devices because they provide interest (humans are by nature ‘tool makers’) and confer status [31,32].

The decisions at gates one to four are not based on creating and populating models – they do not follow the step-wise process required for the calculation of expected utility. In an ideal world, all but the most uncontentious decisions could be subject to such an analysis. In the real world, most decisions are a matter of judgment informed by such evidence as the decision-maker may have gleaned. In such a world, resources for full economic models are sparse if they exist at all. Such resources need to be targeted where they will do most good – in this case where there is most doubt. The algorithm we offer is an aid to intuitive decision-making, not a defence of it.

There are a number of WHO resources that decision-makers can turn to, to aid decisions at the respective decision-gates.

1. The WHO compendium of Core Medical Equipment [13] and the WHO medical device lists by facility/clinical area [6,8] will help in selection of ‘bare essentials’ at decision-gate one. However, the WHO Core Medical Equipment document disclaims that it “has not reviewed the [...] cost-acceptability of any of the technologies referred to hereafter.”
2. The WHO Core Medical Equipment document provides an indication of physical infrastructure and human resource requirements for various classes of device [13] and can thus assist decision-makers at decision-gate two. Consideration of maintenance and spare parts may not exclude a device at decision-gate two, but may encourage purchasers to think carefully about the type of contract that will maximise the sellers’ incentive to maintain the device in use.

3. Various documents have conducted analyses of the cost-effectiveness of composite services, such as tuberculosis, vaccination and HIV services, and specify devices that are necessary, thereby assisting analysis at decision-gate 3.
4. As mentioned earlier, the WHO has produced excellent documents on methods for formal cost-utility analysis applicable at decision-gate 5.

Despite the advice given on methods for cost-effectiveness analysis, very few examples of models for specific device evaluations can be found in the published literature. Laparoscopic surgery [33] and implantable defibrillators [34] have been evaluated in middle-income countries (Thailand and Brazil respectively), while injection devices [35] and pulse oximeters for operating theatre use are the only examples specifically targeted at low-income countries of which we are aware. We should mention that methods other than cost-benefit or cost-utility analysis have been proposed for choosing between alternatives – for example, by aggregating mean preferences across different attributes (outcomes) of the decision – so called multi-criteria decision-making [36,37]. This is not the place for a critique of this method, save to say that it is also a relatively time intensive process and cannot be used to bypass the need for an intuitive screening method such as that proposed here.

In some cases, simple (“back of the envelope”) models may suffice – for example, where a device reduces mortality, it may prove very good value for money even if only lives saved are taken into account and potential quality of life improvements ignored. Such an approach may be regarded as a compromise between a purely intuitive decision on the one hand, and a fully specified health economic model on the other [38].

The current paper presents a simple flow diagram (sequential check-list) to assist medical device prioritization in a low-income country. The framework for prioritization can be easily implemented at institutional or facility level and we offer it in the expectation that the model will help mitigate pro-technology bias and reduce waste from purchase of more expensive alternatives and devices, which fall into disuse because they cannot be supported in a local environment.

Additional file

Additional file 1: List of medical equipment available at main South Sudan hospitals.

Abbreviations

CADTH: Canadian Agency for Drugs and Technologies in Health; DALY: Disability Adjusted Life Year; MRI: Magnetic Resonance Imaging; NICE: National Institute for Health and Care Excellence; QALY: Quality

Adjusted Life Year; WHO: World Health Organization; WHO-CHOICE: World Health Organization: CHOosing Interventions that are Cost-Effective.

Competing interests

The authors declare that they have no competing interests.

Authors' contributions

RJL developed the prioritization framework, conceived and participated in critical drafting of the manuscript; KD, SLB, SMH, CC, PL and VB participated in the critical drafting of the manuscript; PJC conducted background research on South Sudan and participated in the drafting of the manuscript. All authors read and approved the final manuscript.

Acknowledgements

This study was supported primarily by the EPSRC Multidisciplinary Assessment of Technology Centre for Healthcare (MATCH) programme (EPSRC Grant GR/S29874/01). The National Institute for Health Research (NIHR) Collaborations for Leadership in Applied Health Research and Care (CLAHRC) for the West Midlands, and the NIHR Senior Investigator Award granted to RJL also contributed resources. The views expressed in this work do not necessarily reflect those of the funders.

We thank Drs Philippa Lilford (Taunton NHS Hospital) Jonathan Pons (Good Shepherd Hospital, Swaziland) and Derek Barrett (previously Ngwelezane Hospital, Empangeni, Twa Zulu Natal, Swaziland) for advice about pulse oximetry in a developing country; Drs Gladji Varghese and Joyce Mareverwa (Good Shepherd Hospital, Swaziland) for advice on foreign bodies in the tracheo-bronchial tree; Dr Kambale (Good Shepherd Hospital, Swaziland) for advice on CTG monitoring; Drs Janesh Gupta and Andrew Reid (University of Birmingham) for the advice on hysteroscopy and bronchoscopy respectively; and Dr Jordan Lawrence for preliminary field-work and compiling the long-list of devices requested by clinicians in South Sudan's three main teaching hospitals.

Author details

¹Public Health, Epidemiology and Biostatistics, School of Health and Population Sciences, College of Dental and Medical Sciences, University of Birmingham, Edgbaston, West Midlands B15 2TT, UK. ²Warwick Centre for Applied Health Research and Delivery, University of Warwick, Coventry CV4 7AL, UK. ³Ministry of Finance, Government of South Sudan, Juba, South Sudan. ⁴School of Medicine, University of Southampton, Southampton SO17 1BJ, UK.

Received: 18 February 2014 Accepted: 15 December 2014

Published online: 10 January 2015

References

1. Ministry of Health, G. of S. S., Southern Sudan Commission for Census, S. and E. Southern Sudan Household Health Survey. 2006;304.
2. Ministry of Health, G. of S. S. The basic package of health and nutrition services in secondary and tertiary health care. 2006;43.
3. Ministry of Finance and Economic Planning South Sudan. Republic of South Sudan Donor Book. 2012;152.
4. Achiek M, Lado D. Mapping the specialist medical workforce for Southern Sudan: devising ways for capacity building. *South Sudan Med J.* 2010;3(2):6–9.
5. National Bureau of Statistics, S. S. South Sudan Statistical Yearbook. 2011;67.
6. World Health Organization. List of medical devices by health care facility Health Post - Outpatient. 2010.
7. World Health Organization. List of medical devices by health care facility Specialized Hospital - Diagnostic. 2010.
8. World Health Organization, John Snow Inc., World Bank, PATH, United Nations Population Fund, Population Action International. Interagency List of Essential Medical Devices for Reproductive Health. 2008.
9. World Health Organization. Guidance for countries on the specifications for managing TB laboratory equipments and supplies. 2011.
10. Musgrove P, Fox-Rushby J. Disease Control Priorities: Chapter 15 Cost-Effectiveness Analysis for Priority Setting. In *Disease Control Priorities in Developing Countries* (2nd Edition). 2006;p. 271–286.
11. Baltussen R, Floyd K, Dye C. Cost effectiveness analysis of strategies for tuberculosis control in developing countries. *BMJ (Clin Res Ed).* 2005;331(7529):1364. doi:10.1136/bmj.38645.660093.68.

12. Borras C, PAHO, WHO. Organization, Development, Quality Assurance and Radiation Protection in Radiology Services: Imaging and Radiation Therapy. 1997.
13. World Health Organization. Core Medical Equipment. 2011.
14. World Health Organization. Medical devices: Managing the Mismatch (An outcome of the Priority Medical Devices project). 2010.
15. Keller JP, ECRI. Instructions included? Materials management in Health Care. 2010;26–9.
16. Perry L, Malkin R. Effectiveness of medical equipment donations to improve health systems: how much medical equipment is broken in the developing world? *Med Biol Eng Comput*. 2011;49(7):719–22. doi:10.1007/s11517-011-0786-3.
17. World Health Organization. (n.d.). Procurement process resource guide WHO Medical device technical series. 2011.
18. Temple-Bird C, Kaur M, Lenel A, Kawohl W. How to manage series for healthcare technology: Guide 5 How to Organize the Maintenance of Your Healthcare Technology. TALC. 2005.
19. Dijkhuizen FP, Mol BW, Brölmann HA, Heintz AP. The accuracy of endometrial sampling in the diagnosis of patients with endometrial carcinoma and hyperplasia: a meta-analysis. *Cancer*. 2000;89(8):1765–72. Retrieved from <http://www.ncbi.nlm.nih.gov/pubmed/11042572>.
20. van Dongen H, de Kroon CD, Jacobi CE, Trimpos JB, Jansen FW. Diagnostic hysteroscopy in abnormal uterine bleeding: a systematic review and meta-analysis. *Int J Obstet Gynaecol*. 2007;114(6):664–75. doi:10.1111/j.1471-0528.2007.01326.x.
21. Clark TJ, Voit D, Gupta JK, Hyde C, Song F, Khan KS. Accuracy of hysteroscopy in the diagnosis of endometrial cancer and hyperplasia: a systematic quantitative review. *JAMA*. 2002;288(13):1610–21. Retrieved from <http://www.ncbi.nlm.nih.gov/pubmed/12350192>.
22. Yasmin F, Farrukh R, Kamal F. Efficacy of pipelle as a tool for endometrial biopsy. 2007;23,12–5.
23. Fakhar S, Saeed G, Khan A, Alam A. Validity of pipelle endometrial sampling in patients with abnormal uterine bleeding. *Ann Saudi Med*. 2008;28(3):188–91.
24. Shillcutt SD, Walker DG, Goodman CA, Mills AJ. Cost effectiveness in low- and middle-income countries: a review of the debates surrounding decision rules. *Pharmacoeconomics*. 2009;27(11):903–17. doi:10.2165/10899580-000000000-00000.
25. WHO CHOICE Collaboration. WHO Guide to Cost-Effectiveness Analysis: Making Choices in Health. (T. Tan-Torres, R. Baltussen, T. Adam, R. Hutubessy, A. Acharya, D. B. Evans, & C. J. L. Murray, Eds.). World Health Organization. 2003;329
26. Goldie SJ, Gaffikin L, Goldhaber-Fiebert JD, Gordillo-Tobar A, Levin C, Mahé C, et al. Cost-effectiveness of cervical-cancer screening in five developing countries. *N Engl J Med*. 2005;353(20):2158–68. doi:10.1056/NEJMsa044278.
27. National Institute for Health and Care Excellence. NICE "What We Do." Retrieved August 06, 2014, from <https://www.nice.org.uk/about/what-we-do>.
28. Canadian Agency for Drugs and Technologies in Health. CADTH "About CADTH." Retrieved August 06, 2014, from <http://www.cadth.ca/en/cadth>
29. Laxminarayan R, Chow J, Shahid-salles SA. Chapter 2 Intervention Cost-Effectiveness: Overview of Main Messages. In *Disease Control Priorities in Developing Countries* (2nd Edition). 2006;35–86.
30. Burn SL, Chilton PJ, Gawande AA, Lilford RJ. Peri-operative pulse oximetry in low-income countries: a cost – effectiveness analysis. *Bull World Health Organ*. 2014; 92(12):858-67
31. Sorenson, C., Drummond, M., & Kanavos, P. Ensuring value for money: The role of health technology assessment in the European Union. 2007;1–179.
32. World Health Organization. WHO: Medical Device Technical Series Development of medical device policies. 2011.
33. Teerawattananon Y, Mugford M. Is it worth offering a routine laparoscopic cholecystectomy in developing countries? A Thailand case study. *Cost Effectiveness Res Allocation: C/E*. 2005;3:10. doi:10.1186/1478-7547-3-10.
34. Ribeiro RA, Stella SF, Camey SA, Zimmerman LI, Pimentel M, Rohde LE, et al. Cost-effectiveness of implantable cardioverter-defibrillators in Brazil: primary prevention analysis in the public sector. *Value Health*. 2010;13(2):160–8. doi:10.1111/j.1524-4733.2009.00608.x.
35. Ekwueme DU, Weniger BG, Chen RT. Model-based estimates of risks of disease transmission and economic costs of seven injection devices in sub-Saharan Africa. *Bull World Health Organ*. 2002;80(11):859–70. Retrieved from <http://www.pubmedcentral.nih.gov/articlerender.fcgi?artid=2567682&tool=pmcentrez&rendertype=abstract>.
36. Nobre FF, Trotta LT, Gomes LF. Multi-criteria decision making—an approach to setting priorities in health care. *Stat Med*. 1999;18(23):3345–54. Retrieved from <http://www.ncbi.nlm.nih.gov/pubmed/10602156>.
37. Baltussen R, Niessen L. Priority setting of health interventions: the need for multi-criteria decision analysis. *Cost Effectiveness Res Allocation*. 2006;4:14. doi:10.1186/1478-7547-4-14.
38. Cosh E, Girling A, Lilford R, McAteer H, Young T. Investing in new medical technologies: a decision framework. *J Commer Biotechnol*. 2007;13(4):263–71. doi:10.1057/palgrave.jcb.3050062.

Submit your next manuscript to BioMed Central and take full advantage of:

- Convenient online submission
- Thorough peer review
- No space constraints or color figure charges
- Immediate publication on acceptance
- Inclusion in PubMed, CAS, Scopus and Google Scholar
- Research which is freely available for redistribution

Submit your manuscript at
www.biomedcentral.com/submit

