

## Heme induces human and mouse platelet activation through C-type-lectin-like receptor-2

Bourne, Joshua; Colicchia, Martina; Di, Ying; Martin, Eleya; Slater, Alexandre; Roumenina, Lubka T.; Dimitrov, Jordan D.; Watson, Steve; Rayes, Julie

DOI:

[10.3324/haematol.2020.246488](https://doi.org/10.3324/haematol.2020.246488)

License:

Creative Commons: Attribution-NonCommercial (CC BY-NC)

### Document Version

Publisher's PDF, also known as Version of record

### Citation for published version (Harvard):

Bourne, J, Colicchia, M, Di, Y, Martin, E, Slater, A, Roumenina, LT, Dimitrov, JD, Watson, S & Rayes, J 2021, 'Heme induces human and mouse platelet activation through C-type-lectin-like receptor-2', *Haematologica*, vol. 106, no. 2, pp. 626-629. <https://doi.org/10.3324/haematol.2020.246488>

[Link to publication on Research at Birmingham portal](#)

### General rights

Unless a licence is specified above, all rights (including copyright and moral rights) in this document are retained by the authors and/or the copyright holders. The express permission of the copyright holder must be obtained for any use of this material other than for purposes permitted by law.

- Users may freely distribute the URL that is used to identify this publication.
- Users may download and/or print one copy of the publication from the University of Birmingham research portal for the purpose of private study or non-commercial research.
- User may use extracts from the document in line with the concept of 'fair dealing' under the Copyright, Designs and Patents Act 1988 (?)
- Users may not further distribute the material nor use it for the purposes of commercial gain.

Where a licence is displayed above, please note the terms and conditions of the licence govern your use of this document.

When citing, please reference the published version.

### Take down policy

While the University of Birmingham exercises care and attention in making items available there are rare occasions when an item has been uploaded in error or has been deemed to be commercially or otherwise sensitive.

If you believe that this is the case for this document, please contact [UBIRA@lists.bham.ac.uk](mailto:UBIRA@lists.bham.ac.uk) providing details and we will remove access to the work immediately and investigate.

## Heme induces human and mouse platelet activation through C-type-lectin-like receptor-2

Intravascular hemolysis is a serious complication developed in many severe infections such as malaria, sepsis,<sup>1</sup> typical hemolytic uremic syndrome<sup>2</sup> and congenital diseases such as sickle cell disease.<sup>3</sup> Hemolysis is accompanied by thrombocytopenia, platelet activation, platelet-leukocyte aggregates, inflammation, vascular obstruction and organ damage. During hemolysis, red blood cell destruction leads to the release of molecules such as ADP, hemoglobin and heme which exert potent prothrombotic and proinflammatory actions.

Under physiological conditions, free heme is scavenged by the plasma protein hemopexin, and is subsequently catabolized by heme oxygenase-1 into carbon monoxide, biliverdin and ferrous iron ( $\text{Fe}^{2+}$ ). However, acute or/and chronic hemolysis exhausts the scavenging system leading to an increase in free heme in the blood. Upon release, reduced heme is rapidly and spontaneously oxidized in the blood into ferric ( $\text{Fe}^{3+}$ ) form, hemin, with increased levels observed in hemolytic diseases. It was recently shown that hemin induces human platelet activation and platelet death through ferroptosis, an intracellular iron-mediated cell death.<sup>4</sup> However, the mechanisms and receptors involved in platelet activation by hemin are not known.

In this study, we investigated hemin-mediated human and mouse platelet activation *in vitro*. An increase in labile (i.e., weakly bound and free) heme/hemin is detected in patients with hemolytic diseases with plasma concentrations ranging between 2  $\mu\text{M}$  and 50  $\mu\text{M}$ .<sup>5,6</sup> Similar concentrations of heme are detected in mice with chronic or acute hemolysis such as sickle cell mice or *Escherichia coli*-induced hemolysis.<sup>1,7</sup> In this study, we show that hemin (2–12  $\mu\text{M}$ ) induces rapid aggregation of human washed platelets, while aggregation is slower and reduced in magnitude at higher ( $\geq 25 \mu\text{M}$ ) concentrations (Figure 1A, B). Platelet aggregation was associated with increased P-selectin expression and GPIIb/IIIa activation as measured by flow cytometry (Figure 1C, D). High ( $\geq 25 \mu\text{M}$ ) but not lower concentrations of hemin significantly increased phosphatidylserine (PS) exposure on platelets as assessed using Annexin V staining (Figure 1E). Moreover, high concentrations of hemin induced toxicity as measured by increased levels of lactate dehydrogenase (LDH) in the supernatant of activated platelets (Figure 1F). Recent data have shown that a high concentration of hemin (25  $\mu\text{M}$ ) triggers lipid peroxidation and human platelet death through ferroptosis but not apoptosis or necroptosis.<sup>4</sup> Whether the increase in PS exposure modulates the contribution of platelets to the coagulopathies observed in hemolytic diseases requires further investigation.

Hemin is known to bind to Toll-like receptor (TLR) TLR4 on endothelial cells resulting in endothelial cell activation including secretion of Weibel-Palade bodies.<sup>3</sup> However, blocking TLR4 signaling in platelets using TAK-242 did not alter activation by hemin, suggesting a TLR-4-independent pathway of activation (Figure 1H). At low concentrations, human platelet aggregation by hemin was blocked by inhibitors of Syk (PRT-060318), Src family kinases (PP2) and Btk (Ibrutinib), and partially by GPIIb/IIIa inhibitor eptifibatid (Integrilin) (Figure 1G, H). These results suggest that hemin induces human platelet activation *via* an immunoreceptor-tyrosine-based activation-motif (ITAM) receptor-based pathway.<sup>8</sup> Indeed, low concentrations of hemin provoked phospho-

rylation of Syk and PLC $\gamma$ 2 (Figure 1I). In order to identify the receptor triggering platelet activation by hemin, we used recombinant dimeric forms of C-type-lectin-like receptor-2 (CLEC-2) and collagen receptor glycoprotein VI (GPVI) (hFc-CLEC-2 and hFc-GPVI, respectively) as a blocking strategy. Pre-incubation of hemin with hFc-CLEC-2 but not hFc-GPVI abolished platelet aggregation by hemin identifying CLEC-2 as the receptor mediating human platelet activation by hemin (Figure 1G, H). These results also suggest a direct interaction between hemin and CLEC-2. However, while we believe that the inhibition is likely the result of competition between recombinant and platelet CLEC-2, we cannot rule out that recombinant CLEC-2-hemin complex may interfere with CLEC-2 clustering thereby inhibiting platelet activation. Platelet aggregation was not altered by AYP1, 9, an antibody that blocks the interaction between CLEC-2 and podoplanin, providing indirect evidence that hemin binds to a distinct site on CLEC-2 to podoplanin (Figure 1H). Protoporphyrin IX, the precursor of heme, and cobalt hematoporphyrin were shown to bind to CLEC-2 and inhibit podoplanin-CLEC-2 interaction without inducing platelet activation.<sup>10</sup> The type of interactions by which different porphyrins selectively bind to CLEC-2 and induce platelet activation requires further investigation. Platelet aggregation mediated by low concentrations of hemin (6.25  $\mu\text{M}$ ) was not altered by cyclooxygenase (COX) (indomethacin) or P2Y<sub>12</sub> (cangrelor) inhibitors, showing that, in contrast to podoplanin, secondary mediators are not required for hemin-mediated platelet activation (Figure 1G, H). This may reflect the ability of hemin to induce higher oligomers of CLEC-2 increasing signal transduction. Platelet aggregation does not depend on oxidative stress as hemin-mediated platelet aggregation was not altered by the antioxidant N-acetyl cysteine (NAC) (Figure 1H; Online Supplementary Figure S1). At higher concentrations ( $>25 \mu\text{M}$ ), platelet aggregation was not inhibited by integrilin or inhibitors of Src, Syk and Btk, suggesting that higher concentrations of hemin induce agglutination (Online Supplementary Figure S2). Increasing the concentrations of inhibitors did not alter platelet agglutination/aggregation (*not shown*). The distinct mechanisms of platelet activation by low and high concentrations of hemin might be related to formation of hemin aggregates at high concentrations, which might exert different activities as compared to monomeric or dimeric hemin present at low concentrations.

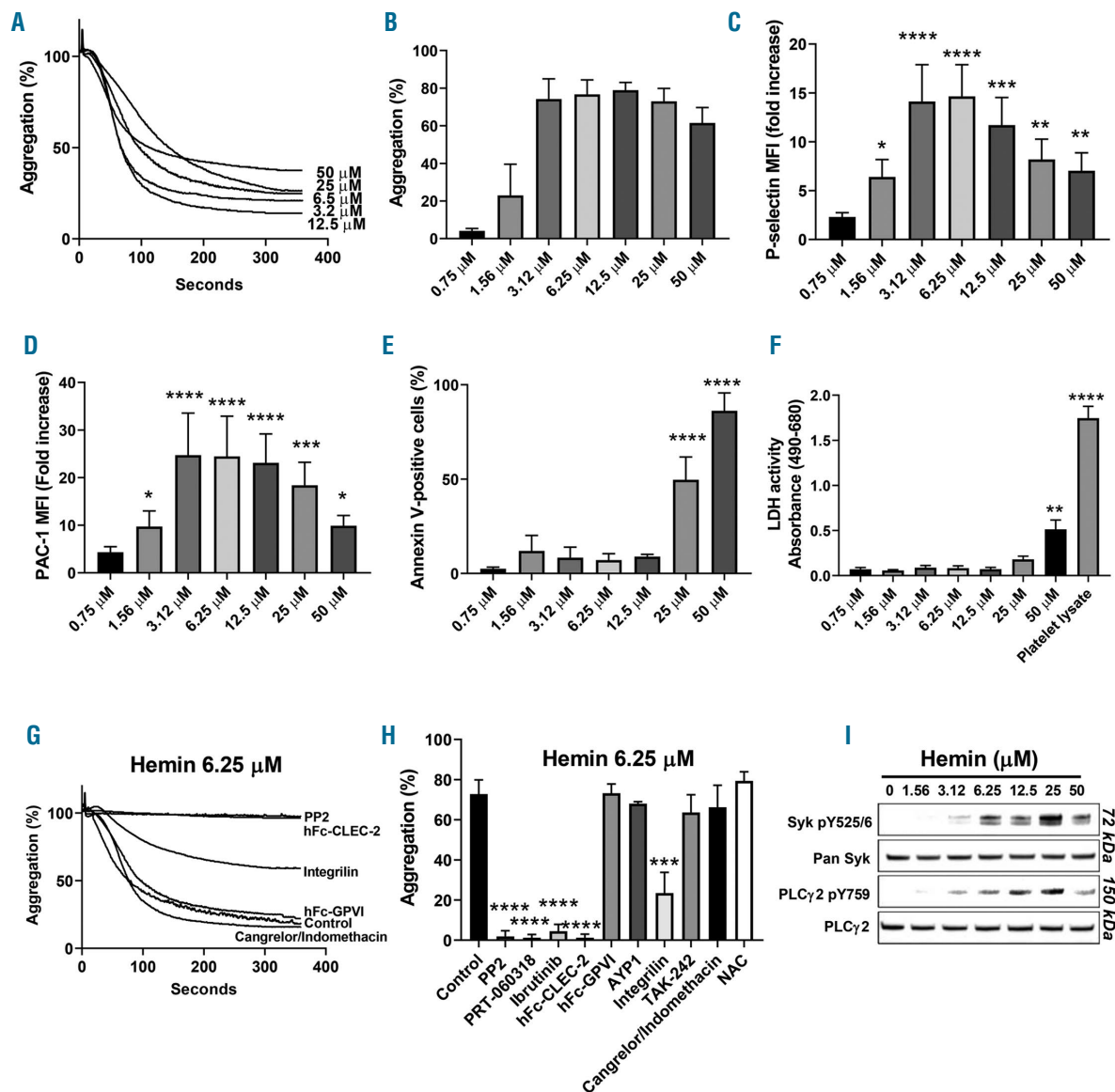
Hemin induces mouse platelet aggregation, albeit at a slightly higher concentration (Figure 2A). Similar to human platelets, aggregation by low concentrations of hemin was inhibited by inhibitors of Src, Syk and Btk tyrosine kinases, recombinant mouse Fc-mCLEC-2 and GPIIb/IIIa blockade (Figure 2B, C). In contrast, inhibitors of TLR4, COX and P2Y<sub>12</sub> had no effect on platelet aggregation by hemin (Figure 2C). Platelet aggregation by hemin was significantly reduced in CLEC-2-deficient platelets confirming a key role for CLEC-2 (Figure 2D, E). However, deletion of CLEC-2 did not inhibit platelet shape change suggesting that one or more other receptors support platelet activation by hemin in mice.

The fact that recombinant CLEC-2 inhibits hemin-mediated platelet aggregation suggests a direct interaction between hemin and CLEC-2. Using surface plasmon resonance-based technique, we demonstrated that hemin binds to both murine and human recombinant CLEC-2 with  $K_D$  values of  $\sim 200 \text{ nM}$  in both cases (Figure 3A, C). Hemin binding to mouse CLEC-2 was characterized by kinetic rate association ( $k_a$ ) and dissociation ( $k_d$ ) constants of  $k_a = 2.77 \pm 0.08 \times 10^4 \text{ mol}^{-1} \text{ s}^{-1}$  and  $k_d = 5.76 \pm 0.09 \times 10^{-3} \text{ s}^{-1}$ .

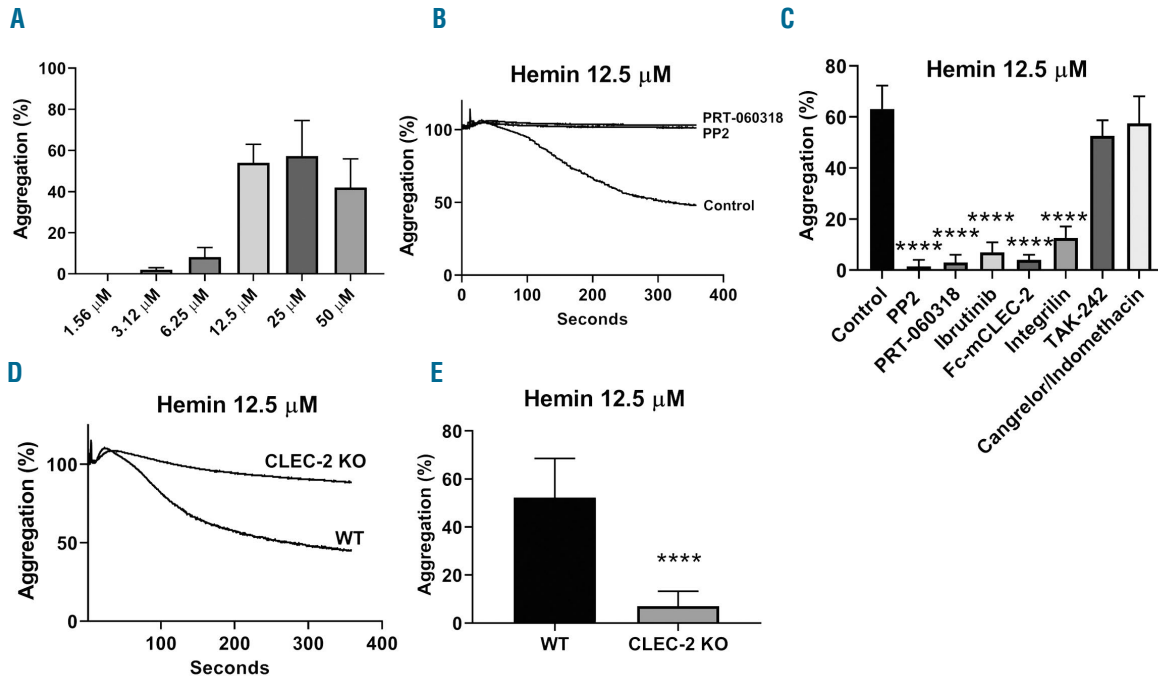
Similar values of kinetic rate constants were determined for hemin binding to human CLEC-2,  $k_a=2.65\pm 0.09\times 10^4 \text{ mol}^{-1} \text{ s}^{-1}$  and  $k_d=5.06\pm 0.05\times 10^{-3} \text{ s}^{-1}$ . The interaction of hemin with human and mouse CLEC-2 was further confirmed by UV-vis absorbance spectroscopy (Figure 3B, D). The differential absorbance spectra profiles revealed significant shifts of the spectra of hemin towards higher wavelength by human and mouse CLEC-2 demonstrating a direct binding. The differences in the spectral

changes of hemin in the presence of human and mouse CLEC-2 can be explained by distinct residues coordinating heme's iron. The blue shift in the Soret region observed with mCLEC-2 suggests the involvement of sulfur containing amino acid (cysteine)<sup>11</sup> whereas the red shift observed with human CLEC-2 suggests histidine coordination.

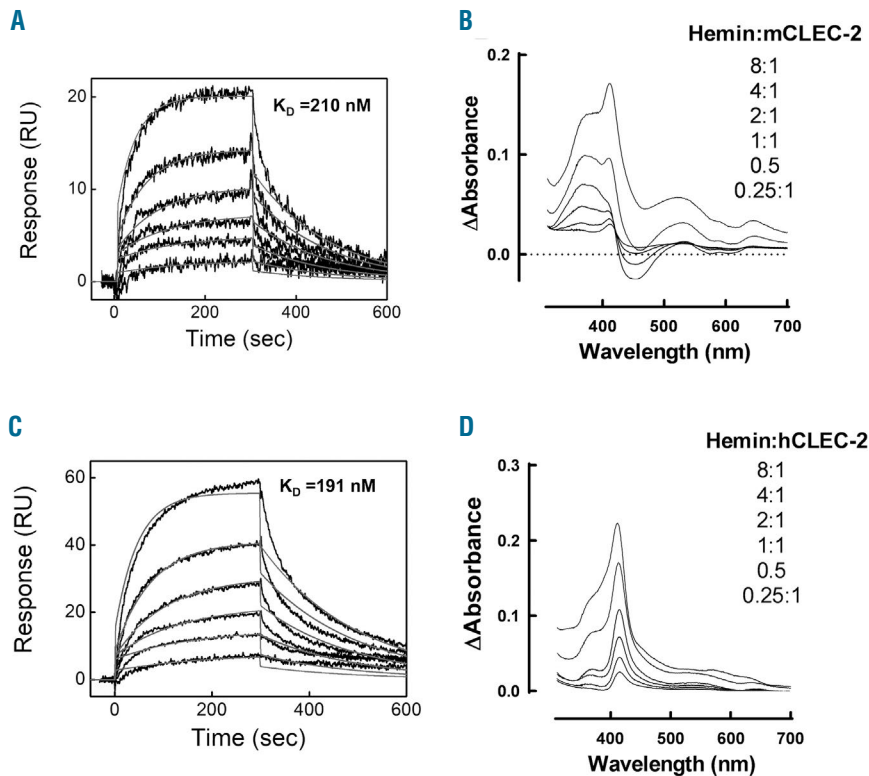
Altogether, these results show that hemin is an endogenous agonist for CLEC-2 leading to platelet activa-



**Figure 1. Hemin mediates human platelet activation through C-type-lectin-like receptor-2.** (A, B) Human washed platelets ( $2\times 10^8/\text{mL}$ ) were incubated with increasing concentrations of hemin in the presence of  $\text{Ca}^{2+}$  (2 mM). Platelet aggregation was assessed for 6 minutes (min) using light transmission aggregometry ( $n=5$ ). (C, D) For flow cytometry analysis,  $1\times 10^6$  platelets were incubated with different concentrations of hemin for 20 min at  $37^\circ\text{C}$ . Platelet activation was determined by flow cytometry using (C) anti-P-selectin and (D) GPIIb/IIIa PAC-1 antibodies ( $n=4$ ). Data is shown as fold increase of median of fluorescence (MFI) of treated platelets over control (absence of hemin). (E) Phosphatidylinositol 3-kinase exposure was assessed using Annexin V staining. (F) Lactate dehydrogenase (LDH) levels were measured in the supernatant following platelet aggregation (6 min). Platelet lysate was used to detect the total level of LDH in platelets. (G, H) Platelet aggregation by hemin was assessed using Btk inhibitor Ibrutinib (500 nM), Src family kinase inhibitor PP2 (20  $\mu\text{M}$ ), Syk inhibitor PRT-060318 (20  $\mu\text{M}$ ), TLR4 inhibitor TAK-242 (10  $\mu\text{M}$ ), P2Y<sub>12</sub> inhibitor Cangrelor (10  $\mu\text{M}$ ) or cyclooxygenase inhibitor indomethacin (10  $\mu\text{M}$ ). Platelets were pre-incubated with different inhibitors for 5 min at  $37^\circ\text{C}$  prior to the addition of hemin. Dimeric C-type-lectin-like receptor-2 (CLEC-2) (hFc-CLEC-2, 20  $\mu\text{g}/\text{mL}$ ) or dimeric collagen receptor glycoprotein VI (GPVI) (hFc-GPVI, 20  $\mu\text{g}/\text{mL}$ ) were pre-incubated with hemin for 20 min at  $37^\circ\text{C}$  prior to addition to platelets ( $n=5$ ). (H) Histogram data are shown as mean  $\pm$  standard deviation. (I) Protein levels of the phosphorylation of Syk and PLC $\gamma$ 2, and total Syk and PLC $\gamma$ 2 in platelet lysates were determined by western blotting after 6 min aggregation. Western blots are representative of five independent experiments. The statistical significance was analyzed using a one-way ANOVA with Tukey's multiple comparisons test using Prism 8 (GraphPad Software Inc, USA). Significance is shown compared to control (absence of hemin), \* $P<0.05$ , \*\* $P<0.01$ , \*\*\* $P<0.001$ , \*\*\*\* $P<0.0001$ .



**Figure 2. Hemin induces mouse platelet aggregation.** (A) Mouse washed platelets ( $2 \times 10^8$ /mL) were incubated with increasing concentrations of hemin in the presence of  $\text{Ca}^{2+}$  (2 mM). Platelet aggregation was assessed using light transmission aggregometry. (B, C) Hemin-mediated platelet aggregation (12.5  $\mu\text{M}$  hemin) was assessed in the presence of Ibrutinib (2  $\mu\text{M}$ ), PP2 (20  $\mu\text{M}$ ), PRT-060318 (20  $\mu\text{M}$ ), TAK-242 (10  $\mu\text{M}$ ), Cangrelor (10  $\mu\text{M}$ ), recombinant mouse C-type-lectin-like receptor-2 (CLEC-2) (Fc-mCLEC-2, 10  $\mu\text{g}/\text{mL}$ ) ( $n=4$ ). (D, E) Washed platelets from wild-type (WT) or Clec-2 deficient (Clec-1bfl/fl PF4cre, Clec-2 KO) were incubated with hemin (12.5  $\mu\text{M}$ ) in the presence of  $\text{Ca}^{2+}$  (2 mM) ( $n=5$ ). (E) Histogram data are shown as mean  $\pm$  standard deviation. The statistical significance was analyzed using a one-way ANOVA with Tukey's multiple comparisons test using Prism 8. Significance is shown compared to control \*\*\*\* $P < 0.0001$ .



**Figure 3. Hemin binds to mouse and human recombinant C-type-lectin-like receptor-2.** (A, C) For surface plasma resonance, real-time interaction profiles were obtained after injection of increasing concentrations of hemin (19.5–625 nM) over recombinant mouse (A) and human (C) C-type-lectin-like receptor-2 (CLEC-2) immobilized on CM5 sensor chip. The association and dissociation phases were followed for 5 minutes, each. The black lines show the experimental data, the grey lines depict the fit obtained using Langmuir global analyses model. (B, D) For UV-vis absorbance spectroscopy, differential spectra were generated after titration of (B) mouse or (D) human dimeric CLEC-2 (2  $\mu\text{M}$ ) with increasing concentrations of hemin (0.5–16  $\mu\text{M}$ ). The differential spectra were obtained after subtraction of the spectra of hemin at a given concentration from the spectra of the same concentration of hemin in the presence of the protein. The measurements were done at 25  $^\circ\text{C}$  in optical cell with 10 mm light path.



tion through activation of integrin GPIIb/IIIa at low concentrations and agglutination at high concentrations. Recombinant CLEC-2 inhibits platelet activation by both mechanisms suggesting that this may represent a novel form of therapeutic intervention to inhibit platelet activation in hemolytic disease.

Ethical approval for collecting blood from healthy volunteers was granted by Birmingham University Internal Ethical Review (ERN\_11-0175). Mice experiments were performed in accordance with UK laws (Animal [Scientific Procedures] Act 1986) with approval of the local ethical committee and UK Home Office approval (PPL P0e98D513).

Human and mouse washed platelets were prepared as previously described.<sup>12,13</sup> Platelet aggregation was assessed using light transmission aggregometry for 6 minutes (ChronoLog, Havertown, PA, USA). Fresh synthetic hemin solution was freshly prepared (Frontiers Scientific, USA) for each experiment. PP2 (Tocris/Biotechne Ltd), PRT-060318 (Caltag medsystems), indomethacin (Sigma-Aldrich), cangrelor (The Medicines Company), Ibrutinib (Stratex Scientific), N-Acetyl-L-cysteine (Sigma-Aldrich) and TAK-242 (Sigma-Aldrich) were preincubated for 5 minutes (min) at 37°C with platelets prior to addition of hemin. Human (h) and mouse (m) CLEC-2 and GPVI were produced as Fc fusion proteins (hFc-CLEC-2, hFc-GPVI, Fc-mCLEC-2) in human embryonic kidney HEK293 cells and purified using chromatography affinity. Recombinant human and mouse CLEC-2 were preincubated with hemin for 15 min at 37°C before addition to platelets. Following aggregation, platelets were centrifuged at 1,000g for 10 min and LDH was measured in the supernatant using CyQUANT™ LDH Cytotoxicity Assay (ThermoFisher Scientific). Clec-2 deficient mice (Clec-1bfl/fl PF4cre) and littermate controls were previously described.<sup>14</sup>

Platelet activation (106 platelets) by different concentrations of hemin (20 min at 37°C) was assessed by flow cytometry with antibodies against CD62P (PE/Cy5 anti-human CD62P antibody, biolegend) and activated GPIIb/IIIa (Alexa Fluor® 647 anti-human CD41/CD61 antibody PAC1, Biolegend) using BD Accuri C6 Plus flow cytometer (BD Bioscience). For western blotting, Phospho-Syk (Tyr525/526) (C87C1) Rabbit mAb (#2710), Phospho-PLCγ2 (Tyr759) antibody (#3874), Syk antibody (#2712) and PLCγ2 antibody (#3872) were used (Cell signalling). Protein phosphorylation was assessed after 6 min of aggregation as previously described.<sup>12</sup>

The binding of human and mouse dimeric CLEC-2 to hemin was performed at 25°C and assessed using surface plasma resonance and UV-spectroscopy methods.<sup>15</sup>

Joshua H. Bourne,<sup>1\*</sup> Martina Colicchia,<sup>1\*</sup> Ying Di,<sup>1</sup> Eleya Martin,<sup>1</sup> Alexander Slater,<sup>1</sup> Lubka T. Roumenina,<sup>2</sup> Jordan D. Dimitrov,<sup>2</sup> Steve P. Watson,<sup>1,3</sup> and Julie Rayes<sup>1,3</sup>

<sup>1</sup>Institute of Cardiovascular Sciences, College of Medical and Dental Sciences, University of Birmingham, Birmingham, UK; <sup>2</sup>Centre de Recherche des Cordeliers, INSERM, Sorbonne Université, USPC, Université Paris Descartes, Université Paris Diderot, Paris, France and <sup>3</sup>Center of Membrane Proteins and Receptors (COMPARE), Universities of Birmingham and Nottingham, The Midlands, UK

\*JHB and MC contributed equally as co-first authors

Correspondence:

JULIE RAYES - j.rayes@bham.ac.uk

doi:10.3324/haematol.2020.246488

Disclosures: no conflicts of interests to disclose.

Contributions: JHB, MC performed experiments and analyzed data; YD, AS, EM generated reagents; LTR contributed to data interpretation; JDD contributed to research design, performed experiments and interpreted data; SPW contributed to research and data interpretation and provided reagents; JR designed and performed research, collected data, analyzed and interpreted data and wrote the manuscript. All authors reviewed and approved the manuscript.

Acknowledgments: the authors would like to thank Dr B. Grygielska for genotyping of mice.

Funding: this work was supported by a BHF Accelerator Award (AA/18/2/34218), BHF programme grant (RG/13/18/30563), Wellcome Trust 4 year studentship (204951), Wellcome Trust Joint Investigator Award (204951/Z/16/Z) and the Centre of Membrane Proteins and Receptors. JDD hold an H2020 ERC starting grant (CoBABATI 678905). SPW holds a BHF Chair (CH/03/003).

## References

- Martins R, Maier J, Gorki AD, et al. Heme drives hemolysis-induced susceptibility to infection via disruption of phagocyte functions. *Nat Immunol.* 2016;17(12):1361-1372.
- Frimat M, Tabarin F, Dimitrov JD, et al. Complement activation by heme as a secondary hit for atypical hemolytic uremic syndrome. *Blood.* 2013;122(2):282-292.
- Belcher JD, Chen C, Nguyen J, et al. Heme triggers TLR4 signaling leading to endothelial cell activation and vaso-occlusion in murine sickle cell disease. *Blood.* 2014;123(3):377-390.
- NaveenKumar SK, SharathBabu BN, Hemshekhar M, Kemparaju K, Girish KS, Magesh G. The Role of Reactive Oxygen Species and Ferroptosis in Heme-Mediated Activation of Human Platelets. *ACS Chem Biol.* 2018;13(8):1996-2002.
- Muller-Eberhard U, Javid J, Liem HH, Hanstein A, Hanna M. Plasma concentrations of hemopexin, haptoglobin and heme in patients with various hemolytic diseases. *Blood.* 1968;32(5):811-815.
- Gouveia Z, Carlos AR, Yuan X, et al. Characterization of plasma labile heme in hemolytic conditions. *FEBS J.* 2017;284(19):3278-3301.
- Belcher JD, Chen C, Nguyen J, et al. Haptoglobin and hemopexin inhibit vaso-occlusion and inflammation in murine sickle cell disease: Role of heme oxygenase-1 induction. *PLoS One.* 2018;13(4):e0196455.
- Rayes J, Watson SP, Nieswandt B. Functional significance of the platelet immune receptors GPVI and CLEC-2. *J Clin Invest.* 2019;129(1):12-23.
- Gitz E, Pollitt AY, Gitz-Francois JJ, et al. CLEC-2 expression is maintained on activated platelets and on platelet microparticles. *Blood.* 2014;124(14):2262-2270.
- Tsukiji N, Osada M, Sasaki T, et al. Cobalt hematoporphyrin inhibits CLEC-2-podoplanin interaction, tumor metastasis, and arterial/venous thrombosis in mice. *Blood Adv.* 2018;2(17):2214-2225.
- Kuhl T, Wissbrock A, Goradia N, et al. Analysis of Fe(III) heme binding to cysteine-containing heme-regulatory motifs in proteins. *ACS Chem Biol.* 2013;8(8):1785-1793.
- Nicolson PLR, Hughes CE, Watson S, et al. Inhibition of Btk by Btk-specific concentrations of ibrutinib and acalabrutinib delays but does not block platelet aggregation mediated by glycoprotein VI. *Haematologica.* 2018;103(12):2097-2108.
- Hughes CE, Pollitt AY, Mori J, et al. CLEC-2 activates Syk through dimerization. *Blood.* 2010;115(14):2947-2955.
- Finney BA, Schweighoffer E, Navarro-Nunez L, et al. CLEC-2 and Syk in the megakaryocytic/platelet lineage are essential for development. *Blood.* 2012;119(7):1747-1756.
- Wiatr M, Merle NS, Boudhabhay I, et al. Anti-inflammatory activity of intravenous immunoglobulin through scavenging of heme. *Mol Immunol.* 2019;111:205-208.