

Flares in patients with Systemic lupus erythematosus (SLE)

McElhone, Kathleen; Abbott, Janice; Hurley, Margaret ; Burnell, Jane ; Lanyon, Peter; Rahman, Anisur; Yee, Chee-Seng; Akil, Mohammed; Bruce, Ian N; Ahmad, Yasmeen; Gordon, Caroline; Teh, Lee-Suan

DOI:

[10.1093/rheumatology/keaa777](https://doi.org/10.1093/rheumatology/keaa777)

License:

Creative Commons: Attribution (CC BY)

Document Version

Publisher's PDF, also known as Version of record

Citation for published version (Harvard):

McElhone, K, Abbott, J, Hurley, M, Burnell, J, Lanyon, P, Rahman, A, Yee, C-S, Akil, M, Bruce, IN, Ahmad, Y, Gordon, C & Teh, L-S 2020, 'Flares in patients with Systemic lupus erythematosus (SLE)', *Rheumatology*, pp. 1-6. <https://doi.org/10.1093/rheumatology/keaa777>

[Link to publication on Research at Birmingham portal](#)

General rights

Unless a licence is specified above, all rights (including copyright and moral rights) in this document are retained by the authors and/or the copyright holders. The express permission of the copyright holder must be obtained for any use of this material other than for purposes permitted by law.

- Users may freely distribute the URL that is used to identify this publication.
- Users may download and/or print one copy of the publication from the University of Birmingham research portal for the purpose of private study or non-commercial research.
- User may use extracts from the document in line with the concept of 'fair dealing' under the Copyright, Designs and Patents Act 1988 (?)
- Users may not further distribute the material nor use it for the purposes of commercial gain.

Where a licence is displayed above, please note the terms and conditions of the licence govern your use of this document.

When citing, please reference the published version.

Take down policy

While the University of Birmingham exercises care and attention in making items available there are rare occasions when an item has been uploaded in error or has been deemed to be commercially or otherwise sensitive.

If you believe that this is the case for this document, please contact UBIRA@lists.bham.ac.uk providing details and we will remove access to the work immediately and investigate.

Original Article

Flares in patients with systemic lupus erythematosus

Kathleen McElhone¹, Janice Abbott², Margaret Hurley³, Jane Burnell³, Peter Lanyon^{4,5,6}, Anisur Rahman ⁷, Chee-Seng Yee⁸, Mohammed Akil⁹, Ian N. Bruce¹⁰, Yasmeen Ahmad¹¹, Caroline Gordon^{12,13,14} and Lee-Suan Teh^{1,15}

Abstract

Objective. SLE is characterized by relapses and remissions. We aimed to describe the frequency, type and time to flare in a cohort of SLE patients.

Methods. SLE patients with one or more 'A' or 'B' BILAG-2004 systems meeting flare criteria ('new' or 'worse' items) and requiring an increase in immunosuppression were recruited from nine UK centres and assessed at baseline and monthly for 9 months. Subsequent flares were defined as: severe (any 'A' irrespective of number of 'B' flares), moderate (two or more 'B' without any 'A' flares) and mild (one 'B').

Results. Of the 100 patients, 94% were female, 61% White Caucasians, mean age (s.d.) was 40.7 years (12.7) and mean disease duration (s.d.) was 9.3 years (8.1). A total of 195 flares re-occurred in 76 patients over 781 monthly assessments (flare rate of 0.25/patient-month). There were 37 severe flares, 32 moderate flares and 126 mild flares. By 1 month, 22% had a mild/moderate/severe flare and 22% had a severe flare by 7 months. The median time to any 'A' or 'B' flare was 4 months. Severe/moderate flares tended to be in the system(s) affected at baseline, whereas mild flares could affect any system.

Conclusion. In a population with active SLE we observed an ongoing rate of flares from early in the follow-up period with moderate–severe flares being due to an inability to fully control the disease. This real-world population study demonstrates the limitations of current treatments and provides a useful reference population from which to inform future clinical trial design.

Key words: flares, disease activity, BILAG-2004 index, SLE

¹Department of Rheumatology, Royal Blackburn Hospital, Haslingden Road, Blackburn, ²School of Psychology, ³Faculty of Health and Wellbeing, University of Central Lancashire, Preston, ⁴Rheumatology, Nottingham University Hospitals NHS Trust, ⁵Epidemiology and Public Health, University of Nottingham, Nottingham, ⁶NIHR Nottingham Biomedical Research Centre, Nottingham, ⁷Centre for Rheumatology Research, University College London, The Rayne Building, 4th Floor, 5 University Street, London, ⁸Department of Rheumatology, Doncaster Royal Infirmary, Armthorpe Road, Doncaster, ⁹Department of Rheumatology, Royal Hallamshire Hospital, Glossop Road, Sheffield, ¹⁰Arthritis Research UK Centre for Epidemiology, Faculty of Biology, Medicine and Health, The University of Manchester and NIHR Manchester Biomedical Research Centre, Manchester University Hospitals NHS Foundation Trust, Manchester Academic Health Science Centre, Manchester, ¹¹Peter Maddison Rheumatology Centre, Betsi Cadwaldr University Health Board, Llandudno Hospital, Llandudno, Conwy, ¹²Rheumatology Research Group, Institute of Inflammation and Ageing, College of Medical and Dental Sciences, University of Birmingham, ¹³Rheumatology Department, City Hospital, Sandwell and West Birmingham Hospitals NHS Trust, ¹⁴NIHR/Wellcome Trust Birmingham Clinical Research Facility, University Hospitals Birmingham NHS Foundation Trust, Birmingham and ¹⁵Faculty of Clinical and Biomedical Sciences, University of Central Lancashire, Preston PR1 2HE, UK

Submitted 28 January 2020; Accepted 14 October 2020

Correspondence to: Lee-Suan Teh, Department of Rheumatology, N2222 Mezzanine Floor, Royal Blackburn Teaching Hospital, Haslingden Road, Blackburn BB2 3HH, UK. E-mail: lsteht@btinternet.com

Introduction

SLE is a major autoimmune multi-system rheumatic disease that is most common in women during the child-bearing years [1]. It can affect any organ system and the disease varies in its clinical manifestations and severity between individuals. For most patients the disease is characterized by unpredictable relapses (flares) and remissions [2]. In recent years, mortality rates have improved [3] but there is still no cure, and flares of disease, infection and damage all continue to contribute to excess morbidity and mortality [4].

Flare is defined by International Consensus as 'a measurable increase in disease activity in one or more organ systems involving new or worse clinical signs and symptoms and/or laboratory measurements. It must be considered clinically significant by the assessor and usually there would be at least consideration of change or an increase in treatment' [5]. Flares are assessed using various validated disease activity measures. However, there is no standardized definition of a measurable increase in disease activity. The three main disease activity indices currently used in clinical trials are the Safety of Estrogen in Lupus Erythematosus National

Rheumatology key messages

- In this observational study, SLE patients flare early on in the follow-up period.
- The median time to any 'A' or 'B' flare (BILAG-2004 index) was 4 months.
- This real-world population study provides a useful reference which can inform future clinical trial design.

Assessment Trial-SLEDAI (SELENA-SLEDAI) [6, 7], SLEDAI-2K [8] and the BILAG-2004 index [9]. For the SLEDAI and its derivatives, items are scored numerically and a numerical increase of at least three compared with the previous assessment constitutes a flare [5, 10, 11]. For the BILAG-2004 index, the presence of an item that is 'worse' or 'new' constitutes a flare [12–14].

Flares have been associated with more hospitalizations [15] and more organ and system damage, which in turn can lead to poorer prognosis and increased mortality [16–18]. In addition, the prolonged use of CS in the presence of persistence of disease or during flares can contribute to damage [19]. Flares, damage and prolonged use of CS can contribute to poor health-related quality of life [20–23]. Therefore, flare prevention is an important treatment goal in patient management.

Understanding the pattern of flares in SLE patients would be informative not only in the day to day management of these patients, but also in the interpretation of clinical trials of new medications where frequency and type of flares are included as outcome measures. This study describes the flare rates and types of flares in a prospective observational multicentre study of patients with active SLE after treatment of a flare.

Methods

The study was granted Multicentre Research Ethics Committee (MREC 02/5/035) approval and participants from the collaborating centres gave written informed consent. The collaborating rheumatology units were UK centres with an interest in SLE as part of the BILAG: Bangor, Birmingham (two centres), Blackburn, University College London, Nottingham, Manchester, Doncaster and Sheffield.

The inclusion and exclusion criteria of the patients recruited, and the demographic and clinical data collected have been detailed previously in the longitudinal study to determine the sensitivity to change of the LupusQoL [24]. Patients were eligible to be included in the study if they had a flare of SLE requiring specific treatment. For this study, flare was defined as a significant increase in disease activity resulting in a BILAG-2004 index 'A' or 'B' score based on manifestation(s) that are 'new' or 'worse' [9, 13, 14, 25]. In addition, the flare definition for this study required patients to have an increase in therapy defined as one or more of the following: an increase of oral prednisolone to ≥ 20 mg/day, introduction of MTX, parenteral methylprednisolone, and/or other

immunosuppressive therapy (e.g. CYC, rituximab). These patients were followed up monthly for 9 months and the BILAG-2004 disease activity index was assessed at each time point. For the purposes of this study, subsequent flares were defined as: severe ('A' flare/s irrespective of number of 'B' flares), moderate (two or more 'B' flares without any 'A' flares) and mild (one 'B' flare). We calculated the total numerical BILAG-2004 score at baseline where A = 12, B = 8, C = 1 for each system [25].

Statistical methods

Patient data were summarized using the following descriptive statistics; means (s.d.), medians (interquartile ranges) and/or frequency counts. Flare rates were expressed as the number of flares per patient-month. Time to flare was also estimated using the Kaplan–Meier method.

Results

Patient characteristics

We recruited 100 patients with a mean (s.d.) age and disease duration of 40.7 (12.7) years and 9.3 (8.1) years, respectively. The study population consisted of 94% females, 62.6% White Caucasians, 15.2% south Asians, 8.1% Black Caribbean, 4% Black Africans, 5% mixed and 1% Chinese. At baseline (initial flare), the median (range) numerical BILAG-2004 score was 14 (10–21). The baseline characteristics are summarized in [Table 1](#). [Table 2](#) show the medications the patients were on at recruitment including for the treatment of the flare.

Flare rates and types of flares

During follow-up, 195 flares occurred in 76 patients over 781 months of follow-up (0.25 flares per patient-month). [Table 3](#) summarizes the flare severity category in these patients: there were 37 severe flares in 22 patients, 32 moderate flares in 19 patients and 126 mild flares in 67 patients. Twenty-nine patients had more than one type of flare in the 9 months: 12 had severe and mild flares, 14 had moderate and mild flares and three patients had all three types of flares (severe, moderate and mild). Twenty-four (24%) patients did not experience any 'A' or 'B' flares. The median time to any 'A' or 'B' flare was 4 months.

By 1 month, 22% of all patients had a mild/moderate/severe flare; 22% of all patients had a moderate/severe flare by 3 months; and 22% of all patients had a severe flare by 7 months. [Fig. 1](#) shows the time to the first mild/

TABLE 1 Patient baseline demographic and clinical characteristics [n (%) unless stated]

Females	94 (94)
Mean (s.d.) age/disease duration (years)	40.7 (12.7)/9.3 (8.1)
Ethnic distribution (n = 99)	
White (British, Irish)	62 (63)
Black (Caribbean, African)	12 (12)
Asian (Indian, Pakistani, Bangladeshi)	14 (14)
Chinese	1 (1)
Other Asian	3 (3)
Mixed	7 (7)
Baseline clinical characteristics (ACR criteria)	
Malar rash	43 (43)
Photosensitivity rash	47 (47)
Discoid rash	12 (12)
Mouth ulcers	47 (47)
Arthritis	92 (91)
Serositis	45 (45)
Renal disease	21 (21)
CNS disease	8 (8)
Haematological disease	73 (72)
Positive ANA	96 (95)
Positive dsDNA, Sm or Antiphospholipid antibodies (APA) antibodies	80 (79)
BILAG-2004 index numerical score, median (range)	14 (10–21)

TABLE 2 Treatment at start of the study (for treatment of flares and background medications at recruitment)

Medications	n = 100 ^a
AZA	17
CYC	6
HCQ	74
LEF	1
MTX	15
MMF	25
Rituximab	11
Steroids (oral or i.v. or i.m.)	87

^aMost patients were on two medications and some were on three medications.

moderate/severe flare (Curve 1), moderate/severe flare (Curve 2) and severe flare (Curve 3).

The BILAG-2004 system(s) that had 'A' and/or 'B' flares at baseline were as follows: musculoskeletal (39.4%), mucocutaneous (21.8%), cardiorespiratory (13.5%), renal (11.8%), constitutional (7.7%), neuropsychiatric (2.4%), gastrointestinal (2.4%) and ophthalmic (1.2%). The systems affected at baseline were compared with those affected at the time of the first severe, moderate and mild flares. Severe (13.6% discordant) and moderate (5.3% discordant) flares tended to be in the same system(s) affected at baseline, whereas mild flares were more likely to affect any system (34.3% discordant) (Table 4).

Discussion

This multicentre prospective observational study captured the frequency of subsequent flare in a population

entering the study at the time of moderate or severe flare. Using the BILAG-2004 index, we have described the pattern of flares in patients with SLE who were treated for severe or moderate flares over a 9-month period. These patients were followed monthly and were treated with various medications. We found that 76% of patients had a subsequent flare and the flare rate was 0.25/patient-month, of which 19% were severe, 16% moderate and the rest were mild flares. The flares were predominantly in the original organ system, demonstrating the inadequacy of current treatment to control disease and to prevent further flares that increase the risk of future organ damage.

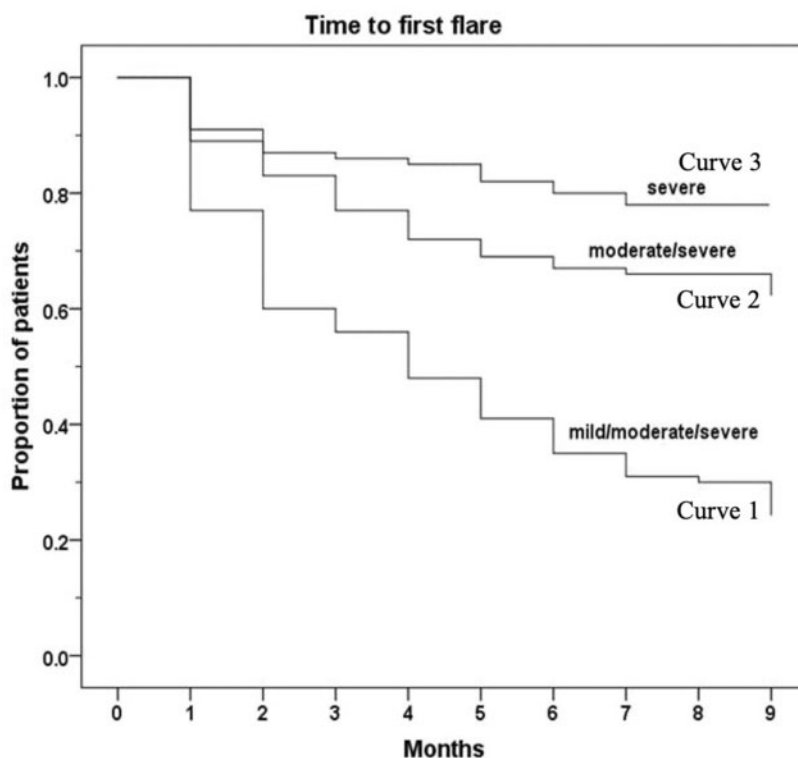
There are only a small number of studies in the literature exploring incidence of flare in SLE as an outcome. These studies are difficult to compare with our study or with each other for the following reasons; different study populations and various methodological differences including study design (observational/interventional), duration of study, outcome measures employed and flare definitions. The challenges of making cross study comparisons are illustrated in [supplementary Table S1](#), available at *Rheumatology* online, in studies that have used the BILAG index as a disease activity measure and a similar definition of flare [26–31].

Our study presents real-world data on patterns of flares and flare frequency in SLE patients in the UK after treatment of a severe or moderate flare with conventional therapy [32]. Thus, the patients included in this study are typical of those that meet the eligibility criteria (inclusion criteria of moderate–severe flares) for an interventional study. The frequency (monthly) of patient review has generated a wealth of data not only on the natural history of subsequent flares after standard treatment (flare rates), but also on the types (severity and system involvement) of

TABLE 3 Type and frequency of flares

Types of flares (using BILAG-2004 index) per patient (n = 100)	Number of patients (n)
Severe (any 'A' flares irrespective of 'B' flares)	
Any severe flare	22
Only one severe flare	15
Multiple severe flares	7
Severe flares only (without moderate/mild flares)	7
Severe and moderate flares only	0
Severe and moderate and mild flares	3
Severe and mild flares only	12
Moderate (two or more 'B' flares without any 'A' flares)	
Any moderate flare	19
Only one moderate flare	12
Multiple moderate flare	7
Moderate flares only (without severe/mild flares)	2
Moderate and severe flares only	0
Moderate and severe and mild flares	3
Moderate and mild flares only	14
Mild (one 'B' flare)	
Any mild flare	67
Only one mild flare	36
Multiple mild flares	31
Mild flares only (without severe/moderate flares)	38
Mild and severe flares only	12
Mild and severe and moderate	3
Mild and moderate flares only	14
No flares (no 'A' or 'B' scores due to items new or worse)	
Patients with no 'A' or 'B' scores	24

FIG. 1 Time to first flare with regards to type of flares (mild, moderate or severe)



Curve 1: time to first mild/moderate/severe flare. Curve 2: time to first moderate/severe flare. Curve 3: time to first severe flare.

TABLE 4 BILAG-2004 index system affected at baseline and time of flare and concordance between the two

BILAG-2004 index	At baseline (all patients) (%) ^a ; $n_{\text{pat}} = 100$, $n_{\text{flare}} = 100$, $n_{\text{system}} = 170$	Severe flare (system with 'A' flare) (%) ^a ; $n_{\text{pat}} = 22$, $n_{\text{flare}} = 37$, $n_{\text{system}} = 38$	Moderate flare (≥ 2 'B' flares) (%) ^a ; $n_{\text{pat}} = 19$, $n_{\text{flare}} = 32$, $n_{\text{system}} = 75$	Mild flare (1 'B' flare) (%) ^a ; $n_{\text{pat}} = 67$, $n_{\text{flares}} = 126$, $n_{\text{system}} = 126$
Systems affected				
Constitutional	13 (7.7)	2 (5.3)	2 (2.7)	2 (1.6)
Mucocutaneous	37 (21.8)	15 (39.5)	19 (25.3)	42 (33.3)
Neurological	4 (2.4)	2 (5.3)	7 (9.3)	8 (6.3)
Musculoskeletal	67 (39.4)	15 (39.5)	21 (28)	41 (32.5)
Cardiorespiratory	23 (13.5)	0	12 (16)	14 (11.1)
Gastrointestinal	4 (2.4)	0	5 (6.7)	1 (0.8)
Ophthalmic	2 (1.2)	2 (5.3)	0	0
Renal	20 (11.8)	2 (5.3)	9 (12)	18 (14.3)
Haematology	0	0	0	0
Concordance with baseline system/s affected at first flare per patient (% of patients)				
Complete concordance		19 (86.4)	9 (47.4)	44 (65.7)
Partial concordance		n/a	9 (47.4)	n/a
Complete discordance		3 (13.6)	1 (5.3)	23 (34.3)

n_{pat} : number of patients; n_{flare} : number of flares; n_{system} : number of times system affected with flare; %: percentage of total number of systems affected with flare; n/a: not applicable.

flares. Thus, the findings of our study may be of relevance to inform the design of interventional studies.

Acknowledgements

We would like to acknowledge the assistance of Montana Mullen with database management. I.N.B. is a National Institute for Health Research (NIHR) Senior Investigator and is supported by the NIHR Manchester Biomedical Research Centre. A.R. is supported by the NIHR University College London Hospitals Biomedical Research Centre. Part of the work was carried out at the National Institute for Health Research (NIHR)/Wellcome Trust Birmingham Clinical Research Facility. The views expressed are those of the author(s) and are not necessarily those of the National Health Service, the NIHR or the Department of Health.

Funding: We are indebted to Versus Arthritis (previously Arthritis Research UK) for financial support (Clinical Trials Grant Number 19230) for the LupusQoL sensitivity to change study, the data from which, formed the basis of this current manuscript.

Disclosure statement: The authors have declared no conflicts of interest.

Supplementary data

Supplementary data are available at *Rheumatology* online.

References

- Rees F, Doherty M, Grainge MJ, Lanyon P, Zhang W. The worldwide incidence and prevalence of systemic lupus erythematosus: a systematic review of epidemiological studies. *Rheumatology (Oxford)* 2017;56:1945–61.
- Maddison PJ. Is it SLE? *Best Pract Res Clin Rheumatol* 2002;16:167–80.
- Urowitz MB, Gladman DD, Tom BDM, Ibañez D, Farewell VT. Changing patterns in mortality and disease outcomes for patients with systemic lupus erythematosus. *J Rheumatol* 2008;35:2152–8.
- Lee YH, Choi SJ, Ji JD, Song GG. Overall and cause-specific mortality in systemic lupus erythematosus: an updated meta-analysis. *Lupus* 2016;25:727–34.
- Ruperto N, Hanrahan LM, Alarcón GS *et al.*; Lupus Foundation of America, Inc. International Flare Consensus Initiative. International consensus for a definition of disease flare in lupus. *Lupus* 2011;20:453–62.
- Petri M, Buyon J, Skovron ML, Kim M. Reliability of SELENA SLEDAI and flare as clinical trial outcome measures [abstract]. *Arthritis Rheum* 1997;40:S218.
- Petri M, Buyon J, Kim M. Classification and definition of major flares in SLE clinical trials. *Lupus* 1999;8:685–91.
- Gladman DD, Ibañez D, Urowitz MB. Systemic lupus erythematosus disease activity index 2000. *J Rheumatol* 2002;29:288–91.
- Yee C-S, Farewell V, Isenberg DA *et al.* The BILAG-2004 Index is sensitive to change for assessment of SLE disease activity. *Rheumatology (Oxford)* 2009;48:691–5.

- 10 Petri M, Kim MY, Kalunian KC *et al.* Combined oral contraceptives in women with systemic lupus erythematosus. *N Engl J Med* 2005;353:2550–8.
- 11 Petri M. Disease activity assessment in SLE: do we have the right instruments? *Ann Rheum Dis* 2007;66:iii61–4.
- 12 Gordon C, Sutcliffe N, Skan J, Stoll T, Isenberg DA. Definition and treatment of lupus flares measured by the BILAG index. *Rheumatology (Oxford)* 2003;42:1372–9.
- 13 Isenberg DA, Allen E, Farewell V *et al.* An assessment of disease flare in patients with systemic lupus erythematosus: a comparison of BILAG2004 and the flare version of SELENA. *Ann Rheum Dis* 2011;70:54–9.
- 14 Isenberg D, Sturgess J, Allen E *et al.* Study of flare assessment in systemic lupus erythematosus based on paper patients. *Arthritis Care Res (Hoboken)* 2018;70:98–103.
- 15 Edwards CJ, Lian TY, Badsha H *et al.* Hospitalization of individuals with systemic lupus erythematosus: characteristics and predictors of outcome. *Lupus* 2003;12:672–6.
- 16 Ugarte-Gil MF, Acevedo-Vásquez E, Alarcón GS *et al.*; on behalf of GLADEL. The number of flares patients experience impacts on damage accrual in systemic lupus erythematosus: data from a multiethnic Latin American cohort. *Ann Rheum Dis* 2015;74:1019–23.
- 17 Bruce IN, O’Keeffe AG, Farewell V *et al.* Factors associated with damage accrual in patients with systemic lupus erythematosus: results from the Systemic Lupus International Collaborating Clinics (SLICC) Inception Cohort. *Ann Rheum Dis* 2015;74:1706–13.
- 18 Yee CS, Su L, Toescu V *et al.* Birmingham SLE cohort: outcomes of a large inception cohort followed for up to 21 years. *Rheumatology (Oxford)* 2015;54:836–43.
- 19 Al Sawah S, Zhang X, Zhu B *et al.* Effect of corticosteroid use by dose on the risk of developing organ damage over time in systemic lupus erythematosus—the Hopkins Lupus Cohort. *Lupus Sci Med* 2015;2:e000066.
- 20 McElhone K, Abbott J, Teh L-S. A review of health related quality of life in patients with systemic lupus erythematosus. *Lupus* 2006;15:633–43.
- 21 McElhone K, Castelino M, Abbott J *et al.* The LupusQoL and association with demographic and clinical parameters in patients with systemic lupus erythematosus. *J Rheumatol* 2010;37:2273–9.
- 22 Bexelius C, Wachtmeister K, Skare P, Jönsson L, Vollenhoven R. Drivers of cost and health-related quality of life in patients with systemic lupus erythematosus (SLE): a Swedish nationwide study based on patient reports. *Lupus* 2013;22:793–801.
- 23 Etchegaray-Morales I, Méndez-Martínez S, Jiménez-Hernández C *et al.* Factors associated with health-related quality of life in Mexican lupus patients using the LupusQoL. *PLoS One* 2017;12:e0170209.
- 24 McElhone K, Abbott J, Sutton C *et al.* Sensitivity to change (responsiveness) and minimal important differences (MIDs) of the LupusQoL in patients with systemic lupus erythematosus. *Arthritis Care Res (Hoboken)* 2016;68:1505–13.
- 25 Yee CS, Cresswell L, Farewell V *et al.* Numerical scoring for the BILAG-2004 index. *Rheumatology (Oxford)* 2010;49:1665–9.
- 26 Ehrenstein MR, Conroy SE, Heath J, Latchman DS, Isenberg DA. The occurrence, nature and distribution of flares in a cohort of patients with systemic lupus erythematosus: a rheumatological view. *Br J Rheumatol* 1995;34:257–60.
- 27 Merrill JT, Burgos-Vargas R, Westhovens R *et al.* The efficacy and safety of abatacept in patients with non-life-threatening manifestations of systemic lupus erythematosus: results of a twelve-month, multicenter, exploratory, phase IIb, randomized, double-blind, placebo-controlled trial. *Arthritis Rheum* 2010;62:3077–87.
- 28 Merrill J, Buyon J, Furie R *et al.* Assessment of flares in lupus patients enrolled in a phase II/III study of rituximab (EXPLORER). *Lupus* 2011;20:709–16.
- 29 Isenberg D, Gordon C, Licu D *et al.* Efficacy and safety of ataccept for prevention of flares in patients with moderate-to-severe systemic lupus erythematosus (SLE): 52-week data (APRIL-SLE randomised trial). *Ann Rheum Dis* 2015;74:2006–15.
- 30 Merrill JT, Wallace DJ, Wax S *et al.*; on behalf of the ADDRESS II Investigators. Efficacy and safety of ataccept in patients with systemic lupus erythematosus: results of a twenty-four-week, multicenter, randomized, double-blind, placebo-controlled, parallel-arm, phase IIb study. *Arthritis Rheum* 2018;70:266–76.
- 31 Furie RA, Wallace DJ, Aranow C *et al.* Long-term safety and efficacy of belimumab in patients with systemic lupus erythematosus, a continuation of a seventy-six-week phase III parent study in the United States. *Arthritis Rheum* 2018;70:868–77.
- 32 Gordon C, Amisshah-Arthur MB, Gayed M *et al.*; for the British Society for Rheumatology Standards, Audit and Guidelines Working Group. The British Society for Rheumatology guideline for the management of systemic lupus erythematosus in adults: executive summary. *Rheumatology (Oxford)* 2018;57:14–8.