

Distinguishing between paediatric brain tumour types using multi-parametric magnetic resonance imaging and machine learning

Grist, James T.; Withey, Stephanie; Macpherson, Lesley; Oates, Adam; Powell, Stephen; Novak, Jan; Abernethy, Laurence; Pizer, Barry; Grundy, Richard; Bailey, Simon; Mitra, Dipayan; Arvanitis, Theodoros N.; Auer, Dorothee P.; Avula, Shivaram; Peet, Andrew C

DOI:

[10.1016/j.nicl.2020.102172](https://doi.org/10.1016/j.nicl.2020.102172)

[10.1016/j.nicl.2020.102172](https://doi.org/10.1016/j.nicl.2020.102172)

License:

Creative Commons: Attribution (CC BY)

Document Version

Publisher's PDF, also known as Version of record

Citation for published version (Harvard):

Grist, JT, Withey, S, Macpherson, L, Oates, A, Powell, S, Novak, J, Abernethy, L, Pizer, B, Grundy, R, Bailey, S, Mitra, D, Arvanitis, TN, Auer, DP, Avula, S & Peet, AC 2020, 'Distinguishing between paediatric brain tumour types using multi-parametric magnetic resonance imaging and machine learning: a multi-site study', *NeuroImage: Clinical*, vol. 25, 102172, pp. 1-6. <https://doi.org/10.1016/j.nicl.2020.102172>, <https://doi.org/10.1016/j.nicl.2020.102172>

[Link to publication on Research at Birmingham portal](#)

General rights

Unless a licence is specified above, all rights (including copyright and moral rights) in this document are retained by the authors and/or the copyright holders. The express permission of the copyright holder must be obtained for any use of this material other than for purposes permitted by law.

- Users may freely distribute the URL that is used to identify this publication.
- Users may download and/or print one copy of the publication from the University of Birmingham research portal for the purpose of private study or non-commercial research.
- User may use extracts from the document in line with the concept of 'fair dealing' under the Copyright, Designs and Patents Act 1988 (?)
- Users may not further distribute the material nor use it for the purposes of commercial gain.

Where a licence is displayed above, please note the terms and conditions of the licence govern your use of this document.

When citing, please reference the published version.

Take down policy

While the University of Birmingham exercises care and attention in making items available there are rare occasions when an item has been uploaded in error or has been deemed to be commercially or otherwise sensitive.

If you believe that this is the case for this document, please contact UBIRA@lists.bham.ac.uk providing details and we will remove access to the work immediately and investigate.

Download date: 17. Apr. 2024



Distinguishing between paediatric brain tumour types using multi-parametric magnetic resonance imaging and machine learning: A multi-site study

James T. Grist^a, Stephanie Withey^{a,b,c}, Lesley MacPherson^d, Adam Oates^d, Stephen Powell^a, Jan Novak^{b,e}, Laurence Abernethy^f, Barry Pizer^g, Richard Grundy^h, Simon Baileyⁱ, Dipayan Mitra^j, Theodoros N. Arvanitis^{a,b,k}, Dorothee P. Auer^{l,m}, Shivaram Avula^f, Andrew C Peet^{a,b,*}

^a Institute of Cancer and Genomic Sciences, School of Medical and Dental Sciences, University of Birmingham, Birmingham, United Kingdom

^b Oncology, Birmingham Women's and Children's NHS foundation trust, Birmingham, United Kingdom

^c RRPPS, University Hospitals Birmingham NHS foundation trust, Birmingham, United Kingdom

^d Radiology, Birmingham Women's and Children's NHS foundation trust, Birmingham, United Kingdom

^e Department of Psychology, School of Life and Health sciences, Aston University, Birmingham, United Kingdom

^f Radiology, Alder Hey Children's NHS foundation trust, Liverpool, United Kingdom

^g Institute of Translational Medicine, University of Liverpool, Liverpool, United Kingdom

^h The Children's Brain Tumour Research Centre, University of Nottingham, Nottingham, United Kingdom

ⁱ Sir James Spence Institute of Child Health, Royal Victoria Infirmary, Newcastle upon Tyne, United Kingdom

^j Neuroradiology, Royal Victoria Infirmary, Newcastle Upon Tyne, United Kingdom

^k Institute of Digital Healthcare, WMG, University of Warwick, Coventry, United Kingdom

^l Sir Peter Mansfield Imaging Centre, University of Nottingham Biomedical Research Centre, Nottingham, United Kingdom

^m NIHR Nottingham Biomedical Research Centre, Nottingham, United Kingdom

ARTICLE INFO

Keywords:

Perfusion
Diffusion
Machine learning

ABSTRACT

The imaging and subsequent accurate diagnosis of paediatric brain tumours presents a radiological challenge, with magnetic resonance imaging playing a key role in providing tumour specific imaging information. Diffusion weighted and perfusion imaging are commonly used to aid the non-invasive diagnosis of children's brain tumours, but are usually evaluated by expert qualitative review. Quantitative studies are mainly single centre and single modality.

The aim of this work was to combine multi-centre diffusion and perfusion imaging, with machine learning, to develop machine learning based classifiers to discriminate between three common paediatric tumour types.

The results show that diffusion and perfusion weighted imaging of both the tumour and whole brain provide significant features which differ between tumour types, and that combining these features gives the optimal machine learning classifier with >80% predictive precision. This work represents a step forward to aid in the non-invasive diagnosis of paediatric brain tumours, using advanced clinical imaging.

1. Introduction

Brain tumours are the most common solid tumours in children, accounting for approximately 25% of all childhood cancers. Magnetic resonance imaging (MRI) is commonly performed for children suspected of having a brain tumour at presentation. Challenges are faced

by paediatric radiologists to diagnose paediatric brain tumour type using MRI, especially in tumours which do not enhance with gadolinium contrast agent (a significant fraction in paediatric radiology) (Koob and Girard, 2014). Therefore, if a combination of imaging methods can be used to quantify tumour cellular microstructure and perfusion, it may be possible to discriminate between low and high

Data availability statement: Data are available from the CCLG functional tumours database.

* Corresponding author at: Children's Brain Tumour Research Team, 4th Floor Institute of Child Health, Birmingham Women's and Children's Hospital NHS Foundation Trust, Steelhouse Lane, Birmingham B4 6NH, United Kingdom.

E-mail address: a.peet@bham.ac.uk (A.C. Peet).

<https://doi.org/10.1016/j.nicl.2020.102172>

Received 22 October 2019; Received in revised form 4 December 2019; Accepted 10 January 2020

Available online 23 January 2020

2213-1582/ © 2020 The Authors. Published by Elsevier Inc. This is an open access article under the CC BY license (<http://creativecommons.org/licenses/by/4.0/>).

grade, as well as key tumour subtypes such as Pilocytic Astrocytoma, Ependymoma, and Medulloblastoma. Magnetic resonance spectroscopic methods have been shown to be highly predictive in discriminating between tumour types, however this technique is challenging to acquire in regions of the brain with poor magnetic field homogeneity and small lesions (Faghihi et al., 2017; Lin and Chung, 2014). Therefore, other more commonly used imaging-based methods, such as diffusion and perfusion imaging, may be favourable to discriminate between tumour types in the paediatric brain.

Diffusion weighted imaging (DWI) and dynamic susceptibility contrast imaging (DSC) are two advanced magnetic resonance imaging (MRI) techniques available to understand tissue microstructure and perfusion on a cellular and tissue level (Goo and Ra, 2017; Shah et al., 2016; Zhou et al., 2011). These techniques have been used extensively to understand the role of cellularity and microvascular perfusion, in both paediatric and adult brain tumours (Hales et al., 2019; Poussaint et al., 2016), with strong correlations with histology for the aforementioned. DWI utilises diffusion sensitising preparation gradients to remove signal from static water compartments in the brain, producing images weighted by the speed of water motion in a given voxel. With the assumption of Brownian motion, diffusion weighted images can be used to calculate an ‘apparent diffusion coefficient (ADC) map’, with each voxel value corresponding to the ADC in the voxel (mm^2s^{-1}) (Le Bihan, 2003).

DSC is used to spatially image the dynamics of a gadolinium containing contrast agent, using fast imaging techniques such as echo-planar imaging (EPI) and (PRESTO). Data are processed using non-linear fitting techniques to extract uncorrected cerebral blood volume (UCBV), leakage coefficient (K2) and corrected cerebral blood volume (CCBV) maps. CBV maps can then be analysed to quantify the perfusion in a given region of the brain (Shiroishi et al., 2015). DSC has shown to be useful in quantifying perfusion differences between low- and high-grade tumours, as well as in stroke (Moustafa and Baron, 2007; Saenger and Christenson, 2010; Sanak et al., 2009).

Supervised machine learning utilises data features (for example mean ADC or mean CBV) and classes (for example ‘high and low grade’ or tumour types) and to train mathematical algorithms (commonly based on linear algebra) to automatically assign data sets to classes. The ability of a learning algorithm to discriminate between classes can be quantitatively determined using methods such as ‘cross-validation’ (Erickson et al., 2017). Previous results have shown the ability of supervised methods to separate between tumour subtypes and high/low grade tumours using magnetic resonance spectroscopy, with 1.5T and 3T results showing 79% and 86% balanced accuracy rate (BAR), respectively (Vicente et al., 2013; Zarinabad et al., 2018).

Applications of supervised learning to oncological medical imaging have commonly utilised single measures of the tumour microenvironment (such as image texture, ADC, perfusion, or spectroscopy) to discriminate between tumour types (Fetit et al., 2018; Gill et al., 2014; Orphanidou-Vlachou et al., 2014, 2013; Zarinabad et al., 2017). However, in this study, we hypothesise that combining ADC and perfusion data from tumour Region of Interest (ROI) and the whole brain, provides an increased accuracy for discriminating between low- and high-grade tumours, as well as between tumour sub-types, in comparison to ROI or whole brain measures alone.

2. Methods

2.1. Patient recruitment

49 participants with suspected brain tumours (medulloblastoma ($N = 17$), pilocytic astrocytoma ($N = 22$), ependymoma ($N = 10$)) were recruited from 4 clinical sites in the United Kingdom (Ethics reference: 04/MRE0/41, Birmingham Children’s Hospital (BCH), Newcastle Royal Victoria Infirmary (NRVI), Queen’s Medical Centre (QMC), Liverpool Alder Hey (LAH)). Participants underwent MRI,

discussed below, before invasive biopsy to confirm diagnosis.

All Ependymoma and Medulloblastoma cases were considered high grade, and Pilocytic Astrocytoma as low grade.

2.2. Magnetic resonance imaging

The imaging protocol for all participants was performed either at 3 or 1.5T and included standard anatomical imaging (T_1 -weighted, T_2 -weighted, T_2 -FLAIR, T_1 -post contrast), as well as diffusion weighted and dynamic susceptibility contrast, covering the tumour volume (cohort and imaging sequence details are found in supplementary Table 1A and B, respectively).

2.3. Image post-processing and analysis

Apparent diffusion coefficient maps were calculated from diffusion weighted imaging, using a linear fit between the two b-value images. DSC time-course data were processed using a gamma-variate fit to form UCBV maps. A leakage correction was undertaken to produce CCBV and K2 maps (Shiroishi et al., 2015). The root mean squared error of the gamma variate fit was used to masque noise and masking any absolute CBV value greater than $3.0 \text{ mL } 100 \text{ g}^{-1} \text{ min}^{-1}$. Brain masking, including removal of background and the skull, was performed during the fitting process. CBV maps were normalised to normal appearing white matter.

T_2 - weighted, ADC, and T_1 -post contrast images were registered to the first DSC volume with SPM12 (UCL), and tumour regions of interest drawn on T_2 weighted imaging.

Image analysis, performed in Matlab, consisted of calculating the image mean, standard deviation, skewness, and kurtosis on a volume by volume basis for diffusion and perfusion imaging maps for regions of interest and the whole brain. Tumour volume (cm^3) was calculated from the T_2 ROI masks.

2.4. Statistical analysis

Imaging features were tested for normality using a Shapiro–Wilk test in R (3.6.1) with subsequent ANOVA/Kruskal–Wallace and Tukey post-hoc tests performed to assess for differences in imaging features between low- and high-grade groups, and between tumour types. Receiver Operator Curves (ROC) were defined from significant imaging components for comparison of low versus high-grade tumours, and the area under the curve (AUC) calculated. Statistical significance was determined at $p < 0.05$, with Bonferroni correction for multiple comparisons performed with all imaging features.

2.5. Machine learning

The discriminant ability of classifiers, described below, was assessed using the F-statistic (a measure of sensitivity and specificity of the learner) and the between group average precision (the average precision of the learner to correctly classify tumour types), after stratified 3-fold cross validation. Individual tumour group accuracy and F-statistics were also calculated. A flowchart demonstrating the processing pipeline is found in Fig. 1.

Tumour volume, ADC and DSC region of interest and whole brain features were processed using principal component analysis to reduce dimensionality, aiming for 95% data variance or $N-1$ components where not possible (where N is the size of the smallest group). Supervised machine learning was performed using the Orange toolbox (Orange) in Python (3.6), using a single layer Neural Network, AdaBoost (an ensemble of stumps), random forest, a support vector machine, and k nearest-neighbours ($k = \text{square root of the number of data points in the training set}$). Iterative hyperparameter optimisation was performed to optimise for overall classifier AUC on each training set. To assess the contribution of each individual imaging feature to

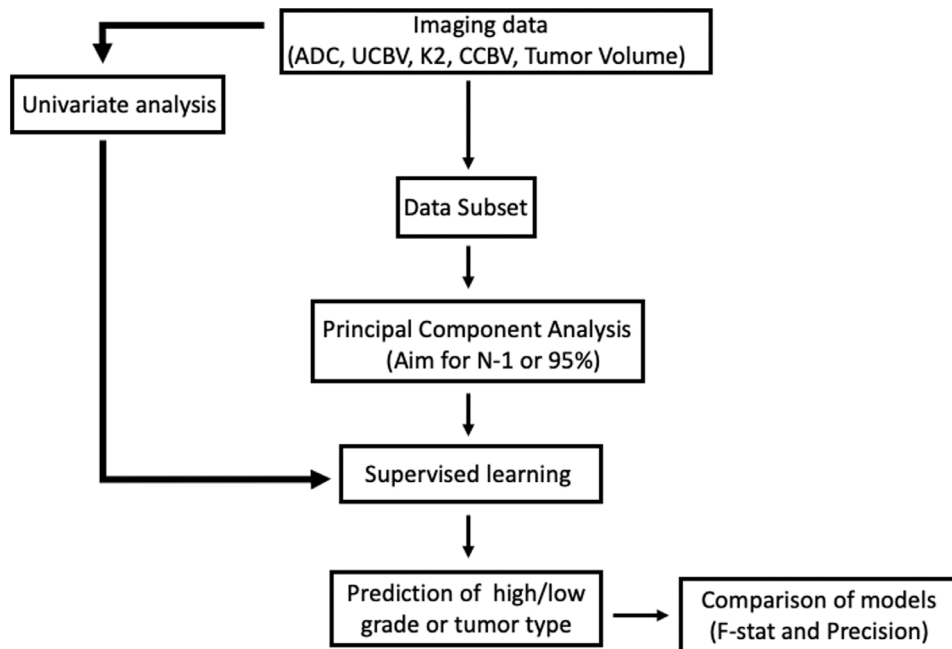


Fig. 1. Data processing pipeline used in this study.

classifier precision was performed by iteratively combining single features with ADC mean. This process was undertaken for both ROI and whole brain features and termed ‘perturbation analysis’.

Learning algorithms were initialised to first discriminate between low- and high-grade groups, and then between tumour sub-types. The Balanced Accuracy Rate (BAR), F-statistic, and individual group accuracies were calculated for each learner after stratified cross-validation.

A further approach to dimensionality reduction was undertaken by independently performing univariate statistical analysis (described above in ‘statistical analysis’ section) between each fold in the aforementioned 3-fold cross validation. The imaging features that provided the highest AUC for each training set were used in testing, on a fold-by-fold basis. This combination of features is termed here as the ‘univariate’ classifier.

2.6. Data oversampling

Two oversampling methods: data replication and SMOTE (Chawla et al., 2002; Zarinabad et al., 2018), were used to increase the ependymoma group size of training sets by 100%. The oversampled data was processed, with supervised learning, as above and results compared with no oversampling.

3. Results

Example DSC and DWI imaging is shown in Fig. 2: T₂-weighted (A), ADC(B), Uncorrected CBV (C), K2 (D), and Corrected CBV (E).

3.1. Tumour region of interest and whole brain analysis reveals features which differ between low- and high-grade tumours and some tumour types

Region of interest and whole brain features analysis revealed a number of imaging features that were significantly different between low- and high-grade tumours. With ADC mean having the highest AUC of 0.8, with a range of 0.37 to 0.78 AUC for other features.

Further to distinguishing between low- and high-grade tumours, significant differences in ADC features were observed between Pilocytic Astrocytomas and Medulloblastomas: ADC ROI mean (1.5 ± 0.3 vs

$0.9 \pm 0.2 \text{ mm}^2 \text{ s}^{-1}$, $p < 0.001$, ACU = 0.75), ADC ROI skewness (0.9 ± 1.0 vs 1.9 ± 0.9 , $p = 0.006$), and ADC ROI kurtosis (5 ± 3 vs 9 ± 5 , $p = 0.045$, ACU = 0.65). A significant difference in tumour volume between Pilocytic Astrocytomas and Ependymomas was observed (2.3 ± 3.1 vs $9.0 \pm 11.2 \text{ cm}^3$, respectively, $p = 0.02$, AUC = 0.67).

Whole brain analysis revealed a significant difference between high and low grade tumours; ADC mean (0.68 ± 0.24 vs $0.9 \pm 0.2 \text{ mm}^2 \text{ s}^{-1}$, $p = 0.001$, AUC = 0.77), and uncorrected CBV whole brain mean (0.11 ± 0.03 vs $0.13 \pm 0.02 \text{ mL } 100 \text{ g}^{-1} \text{ min}^{-1}$, $p = 0.002$, AUC = 0.62). Pilocytic Astrocytomas and Medulloblastomas also differed in the whole brain features such as corrected CBV mean (1.1 ± 0.3 vs $1.2 \pm 0.2 \text{ mL } 100 \text{ g}^{-1} \text{ min}^{-1}$, respectively, $p = 0.009$, AUC = 0.62 and ADC mean (0.9 ± 0.2 vs $0.7 \pm 0.3 \text{ mm}^2 \text{ s}^{-1}$, respectively, $p < 0.001$, AUC = 0.78). Full tumour subtype results are shown in Table 1.

3.2. Supervised learning can distinguish between low- and high-grade tumours and different tumour types with a combination of region of interest and whole brain features

To discriminate between tumour types, the univariate classifier performed the best (using an AdaBoost learner (precision = 85%, F-statistic = 0.84). Excluding ADC whole brain kurtosis from the above classifier resulted in a reduction to 79% precision F-statistic = 0.75.

Utilising PCA to reduce dimensionality did not perform as well as the univariate classifier, with BAR ranging from 66%–64% (all imaging features and all ROI features, respectively). All results including individual class precision are detailed in Tables 2A and B.

A combination of all ROI features had the highest precision to discriminate between high- and low-grade tumours with a support vector machine (86% precision, 11 principal components). All other results for high-low grade classification are shown in supplementary Table 3. Observation of misclassified cases showed that there was no obvious bias toward a single centre or field strength.

Perturbation analysis showed a number of features that, when combined with ADC mean, had a large effect in elevating classifier precision. In particular, Tumour Volume (81%) and UCBV (81%) provided the highest classifier precision (total range = 67–81%, see

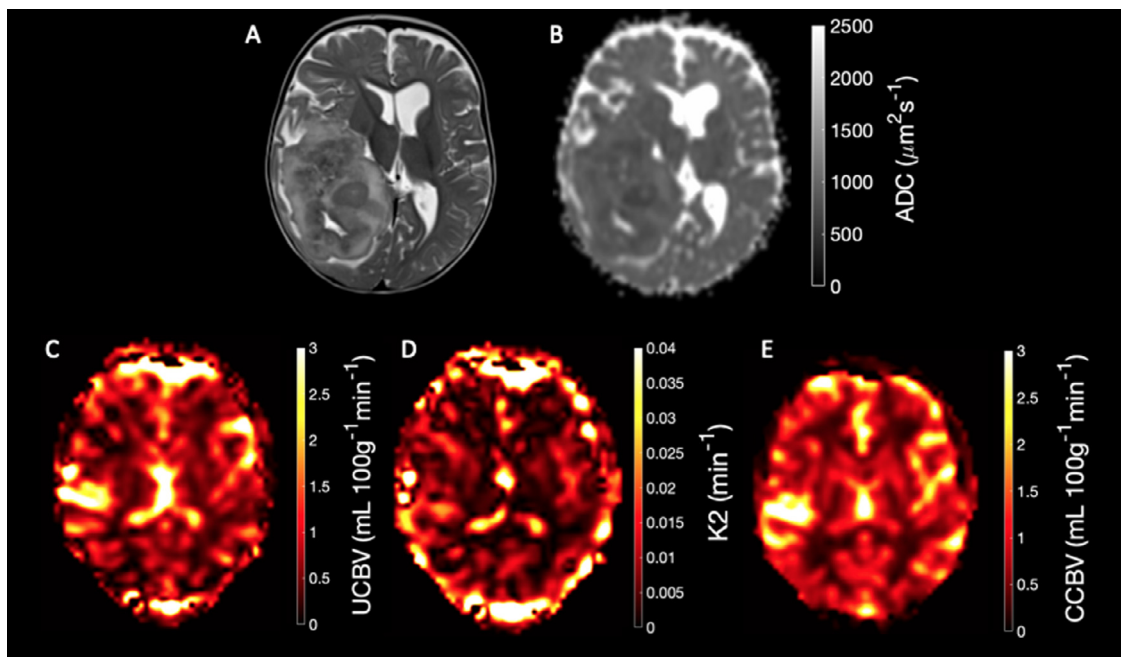


Fig. 2. Example anatomical, perfusion and diffusion maps of an Ependymoma. A) T2-weighted imaging, B) Apparent Diffusion Coefficient map, C) Uncorrected Cerebral Blood Volume map, D) K2 map, E) Corrected Cerebral Blood Volume map.

Table 1
Univariate tumour separation results.

Feature	Pilocytic astrocytoma	Ependymoma	Medulloblastoma
ADC ROI Mean (mm^2s^{-1})	1.5 ± 0.4*	1.2 ± 0.1	0.9 ± 0.2
ADC ROI Skewness	0.9 ± 1.0*	2.0 ± 1.0	1.9 ± 0.9
ADC ROI Kurtosis	5 ± 3*	8 ± 5	9 ± 5
ADC WB Mean (mm^2s^{-1})	0.9 ± 0.2*	0.7 ± 0.3	0.6 ± 0.2
ADC WB Skewness	1.2 ± 0.3*	1.5 ± 0.5	1.6 ± 0.5
ADC WB Kurtosis	5 ± 1*	6 ± 2	7 ± 2
cCBV WB Mean (ml 100 $\text{g}^{-1}\text{min}^{-1}$)	1.1 ± 0.3*	1.2 ± 0.2	1.3 ± 0.2
Tumour Volume (cm^3)	2.3 ± 3.1 **	9.0 ± 11.2	3.3 ± 2.3

A number of imaging features were found to be significant (* = Pilocytic Astrocytoma vs Medulloblastoma at $p < 0.05$, ** = Pilocytic Astrocytoma vs Ependymoma at $p < 0.05$).

supplementary Tables 4A and B).

3.3. Oversampling increases learner accuracy for some classifiers

Oversampling increased classifier precision for PCA based classifiers, as demonstrated by large increase in BAR, results shown in Table 3A, however, it did not increase BAR for the univariate classifier (85% vs 85% vs 86%, no oversampling vs data replication vs SMOTE, respectively). Indeed, using oversampling methods with the univariate classifier showed an increase in the classification accuracy for Ependymomas, but little change for medulloblastomas and a decreased accuracy for pilocytic astrocytomas. All group precision and F-statistic

Table 2A
Supervised learning results for tumour type discrimination.

Average Learner	All features (9 PCs)	ROI features (9 PCs)	Whole brain features (9 PCs)	Univariate ROI	Univariate all features
AdaBoost	62%, 0.61	70%, 0.67	66%, 0.62	76%, 0.76	85%, 0.84
Random Forest	64%, 0.64	71%, 0.72	54%, 0.55	75%, 0.72	75%, 0.73
Support Vector Machine	62%, 0.60	67%, 0.73	54%, 0.55	62%, 0.67	77%, 0.75
K Nearest Neighbors	66%, 0.58	55%, 0.55	50%, 0.46	79%, 0.75	82%, 0.72
Neural Network	56%, 0.55	68%, 0.66	50%, 0.49	60%, 0.64	75%, 0.74

results are presented in Table 3B.

4. Discussion

This study has demonstrated that a combination of multiparametric MRI, univariate analysis, and machine learning techniques can be employed to distinguish between both high- and low-grade paediatric brain tumours, as well as enabling tumour type classification with high accuracy (achieving 85% BAR).

Previous studies have commonly focused on the use of a single data type (for example ADC or DSC perfusion measures) to discriminate between high- and low-grade tumour types as well as common tumour histological diagnoses, with results in this study agreeing with previous findings (Bull et al., 2012).

Studies of diagnostic classifiers for tumours based on imaging have concentrated on using data from regions of interest drawn around the tumour or regions of abnormality on the conventional MRI. Here we have also investigated imaging features selected from the whole brain and shown that these are significantly different between the tumours. In addition we found that these features can improve the accuracy of the diagnostic classifier when included in it.

A particularly interesting result of this study showed that feature selection, informed by univariate statistics, provided a classifier that outperformed other methods. This emphasises the importance of optimising the way in which features are selected for input to the machine learning classifier. Large numbers of features cannot be used due to the risk of over-fitting and, consequently, obtaining over optimistic estimates of the accuracy of the classifier. However, methods, such as principal component analysis, which select features by how much

Table 2B

Class	All features (kNN)	ROI features (Random Forest)	Whole Brain features (AdaBoost)	Univariate (AdaBoost)
Pilocytic Astrocytoma	65%, 0.64	76%, 0.78	77%, 0.74	93%, 0.86
Medulloblastoma	50%, 0.59	75%, 0.81	50%, 0.59	72%, 0.85
Ependymoma	100%, 0.4	50%, 0.33	67%, 0.36	82%, 0.71

Results showed that a combination of significant univariate features combined with an AdaBoost learner was best to distinguish between tumour types (BAR = 85%, F-statistic = 0.84). PCs = Number of Principal Components, kNN = k Nearest Neighbors. Results presented as Precision, F-statistic. A = BAR results, B = tumour sub-type precision and F-statistic results.

Table 3A

Results containing standard, random, and SMOTE oversampling of ependymoma features.

Sampling method	All features (15 PCs)	ROI features (11 PCs)	Whole brain features (9 PCs)	Univariate
Normal	66%, 0.58 kNN	71%, 0.72 RF	66%, 0.62 AdaBoost	84%, 0.84 AdaBoost
Data replication	82%, 0.87 RF	78%, 0.78 AdaBoost	80%, 0.76 AdaBoost	84%, 0.85 RF
SMOTE	85%, 0.84 AdaBoost	82%, 0.80 AdaBoost	78%, 0.78 AdaBoost	85%, 0.85 AdaBoost

Table 3B

Class	Univariate with no oversampling	Univariate with data replication	Univariate with SMOTE oversampling
Pilocytic Astrocytoma	95%, 0.86	91%, 0.91	85%, 0.82
Medulloblastoma	74%, 0.85	75%, 0.75	86%, 0.84
Ependymoma	83%, 0.71	85%, 0.85	83%, 0.88

Balanced accuracy rate for all, ROI, whole brain, and optimized features shown in A, and group classification results from best performing classifier in B (precision (%), F-statistic).

variability exists in the data, may not select the most discriminatory features but those that vary most throughout the data set used in this study.

Previous MR spectroscopic studies at 1.5 and 3T utilising supervised machine learning have achieved similar results as demonstrated here (Vicente et al., 2013; Zarinabad et al., 2017) and it would be interesting to determine the added value of combining these modalities. Challenges are faced in the acquisition of DSC data, particularly the injection of gadolinium in a highly regulated manner in children and the use of arterial spin labelling. These may present an alternative option for utilising perfusion imaging in the future (Novak et al., 2019; Radbruch et al., 2015).

Challenges are faced in paediatric oncological studies with low recruitment rates, due to the low disease incidence in the population. Therefore, multi-centre approaches present an opportunity to both collect the data sets required to undertake machine learning approaches, as well as increasing the statistical power of the study itself. Here we have also shown that multi-parametric data from multiple centres can be combined to form powerful classifiers in the study of paediatric brain tumours. Encouragingly, misclassified cases were not biased toward a single centre – which is in line with previously published results showing that both diffusion and perfusion imaging can be studied reliably on a multi-centre basis (Grech-Sollars et al., 2015; Withey et al., 2019).

Work beyond this study could focus on the expansion to other less common brain tumour sub-types, such as genetic subtypes of Medulloblastomas, to extend the relevance and scope of this work. This, in turn, will aid in the radiological classification and diagnosis of many other tumour types beyond the main three represented in this study. Furthermore, the addition of other microstructure data, such as diffusion kurtosis and intra-voxel incoherent motion, may provide further information regarding the tumour microenvironment, and, therefore, further aid in the discrimination between tumour types.

Limitations of this study include low participant numbers in the Ependymoma group, a common challenge in paediatric imaging studies. This was mitigated, to some extent, by the use of oversampling in the machine learning classifiers, although further numbers in this group should be obtained. Overall, classifier results have shown the power of machine learning to distinguish between tumour types.

In conclusion, this study has demonstrated the power of combining advanced MRI methods with machine learning to provide a non-invasive diagnosis of paediatric tumour types.

CRediT authorship contribution statement

James T. Grist: Formal analysis, Writing - original draft, Writing - review & editing. **Stephanie Withey:** Formal analysis, Writing - review & editing. **Lesley MacPherson:** Writing - review & editing. **Adam Oates:** Writing - review & editing. **Stephen Powell:** Writing - review & editing. **Jan Novak:** Formal analysis. **Laurence Abernethy:** . **Barry Pizer:** Writing - review & editing. **Richard Grundy:** Writing - review & editing. **Simon Bailey:** Writing - review & editing. **Dipayan Mitra:** Writing - review & editing. **Theodoros N. Arvanitis:** Writing - review & editing. **Dorothee P. Auer:** Writing - review & editing. **Shivaram Avula:** Writing - review & editing. **Andrew C Peet:** Writing - review & editing.

Acknowledgments

We would like to acknowledge funding from the Cancer Research UK and EPSRC Cancer Imaging Programme at the Children's Cancer and Leukaemia Group (CCLG) in association with the MRC and Department of Health (England) (C7809/A10342), the Cancer Research UK and NIHR Experimental Cancer Medicine Centre Paediatric Network (C8232/A25261), the Medical Research Council – Health Data Research UK Substantive Site and Help Harry Help Others charity. Professor Peet is funded through an NIHR Research Professorship, NIHR-RP-R2-12-019. Stephen Powell gratefully acknowledges financial support from EPSRC through a studentship from the Physical Sciences for Health Centre for Doctoral Training (EP/L016346/1). Professor Theodoros N Arvanitis is partially supported by Health Data Research UK, which is funded by the UK Medical Research Council, Engineering and Physical Sciences Research Council, [Economic and Social Research Council](#), Department of Health and Social Care (England), Chief Scientist Office of the Scottish Government Health and Social Care Directorates, Health and Social Care Research and Development Division (Welsh Government), Public Health Agency (Northern Ireland), British Heart Foundation and Wellcome Trust. We would also like to acknowledge

the MR radiographers at Birmingham Children's Hospital, Alder Hey Children's Hospital, the Royal Victoria Infirmary in Newcastle and Nottingham Children's Hospital for scanning the patients in this study. We would also like to thank Selene Rowe at Nottingham University Hospitals NHS Trust for help with gaining MRI protocol information. Dr James Grist is funded by the Little Princess Trust (CCLGA 2017 15).

Supplementary materials

Supplementary material associated with this article can be found, in the online version, at [doi:10.1016/j.nicl.2020.102172](https://doi.org/10.1016/j.nicl.2020.102172).

References

- Bull, J.G., Saunders, D.E., Clark, C.A., 2012. Discrimination of paediatric brain tumours using apparent diffusion coefficient histograms. *Eur. Radiol.* 22, 447–457.
- Chawla, N.V., Bowyer, K.W., Hall, L.O., Kegelmeyer, P.W., 2002. SMOTE : synthetic minority over-sampling technique. *J. Artif. Intell. Res.* 16, 321–357.
- Erickson, B.J., Korfiatis, P., Akkus, Z., Kline, T.L., 2017. Machine learning for medical imaging. *Radiographics* 37 (2), 505–515.
- Faghihi, R., Zeinali-Rafsanjani, B., Mosleh-Shirazi, M.A., Saeedi-Moghadam, M., Lotfi, M., Jalli, R., Iravani, V., 2017. Magnetic resonance spectroscopy and its clinical applications: a review. *J. Med. Imaging Radiat. Sci.* 48, 233–253.
- Fetit, A.E., Novak, J., Rodríguez, D., Auer, D.P., Clark, C.A., Grundy, R.G., Peet, A.C., Arvanitis, T.N., 2018. Radiomics in paediatric neuro-oncology: a multicentre study on MRI texture analysis. *NMR Biomed.* 31, 1–13.
- Gill, S.K., Wilson, M., Davies, N.P., Macpherson, L., English, M., Arvanitis, T.N., Peet, A.C., 2014. Diagnosing relapse in children's brain tumors using metabolite profiles. *Neuro. Oncol.* 16, 156–164.
- Goo, H.W., Ra, Y.S., 2017. Advanced MRI for pediatric brain tumors with emphasis on clinical benefits. *Korean J. Radiol.* 18, 194–207.
- Grech-Sollars, M., Hales, P.W., Miyazaki, K., Raschke, F., Rodríguez, D., Wilson, M., Gill, S.K., Banks, T., Saunders, D.E., Clayden, J.D., Gwilliam, M.N., Barrick, T.R., Morgan, P.S., Davies, N.P., Rossiter, J., Auer, D.P., Grundy, R., Leach, M.O., Howe, F.A., Peet, A.C., Clark, C.A., 2015. Multi-centre reproducibility of diffusion MRI parameters for clinical sequences in the brain. *NMR Biomed.* 28, 468–485.
- Hales, P.W., d'Arco, F., Cooper, J., Pfeuffer, J., Hargrave, D., Mankad, K., Clark, C., 2019. Arterial spin labelling and diffusion-weighted imaging in paediatric brain tumours. *Neuroimage Clin.* 22, 1–11.
- Koob, M., Girard, N., 2014. Cerebral tumors: specific features in children. *Diagn. Interv. Imaging* 95, 965–983.
- Le Bihan, D., 2003. Looking into the functional architecture of the brain with diffusion MRI. *Nat. Rev. Neurosci.* 4, 469–480.
- Lin, G., Chung, Y., 2014. Current opportunities and challenges of magnetic resonance spectroscopy, positron emission tomography, and mass spectrometry imaging for mapping cancer metabolism in vivo. *Biomed. Res. Int.* 2014, 1–13.
- Moustafa, R., Baron, J.-C., 2007. Clinical review: Imaging in ischaemic stroke implications for acute management. *Crit. Care* 11, 227.
- Novak, J., Withey, S.B., Lateef, S., Macpherson, L., Pinkey, B., Peet, A.C., 2019. A comparison of pseudo-continuous arterial spin labelling and dynamic susceptibility contrast MRI with and without contrast agent leakage correction in paediatric brain tumours. *Br. J. Radiol.* 92, 1–9.
- Orphanidou-Vlachou, E., Auer, D., Brundler, M.A., Davies, N.P., Jaspán, T., MacPherson, L., Natarajan, K., Sun, Y., Arvanitis, T.N., Grundy, R.G., Peet, A.C., 2013. 1H magnetic resonance spectroscopy in the diagnosis of paediatric low grade brain tumours. *Eur. J. Radiol.* 82, e295–e301.
- Orphanidou-Vlachou, E., Vlachos, N., Davies, N.P., Arvanitis, T.N., Grundy, R.G., Peet, A.C., 2014. Texture analysis of T1- and T2-weighted MR images and use of probabilistic neural network to discriminate posterior fossa tumours in children. *NMR Biomed.* 27, 632–639.
- Poussaint, T.Y., Vajapeyam, S., Ricci, K.L., Panigrahy, A., Kocak, M., Kun, L.E., Boyett, J.M., Pollack, I.F., Fouladi, M., 2016. Apparent diffusion coefficient histogram metrics correlate with survival in diffuse intrinsic pontine glioma: a report from the pediatric brain tumor consortium. *Neuro. Oncol.* 18, 725–734.
- Radbruch, A., Weberling, L.D., Kieslich, P.J., Eidel, O., Burth, S., Kickingereider, P., Heiland, S., Wick, W., Schlemmer, H.-P., Bendszus, M., 2015. Gadolinium retention in the dentate nucleus and globus pallidus is dependent on the class of contrast agent. *Radiology* 275, 150337.
- Saenger, A.K., Christenson, R.H., 2010. Stroke biomarkers: progress and challenges for diagnosis, prognosis, differentiation, and treatment. *Clin. Chem.* 56, 21–33.
- Sanak, D., Horak, D., Herzig, R., Hlustik, P., Kanovsky, P., 2009. The role of magnetic resonance imaging for acute ischemic stroke. *Biomed. Pap.* 153, 181–187.
- Shah, N.J., Worthoff, W.A., Langen, K.J., 2016. Imaging of sodium in the brain: a brief review. *NMR Biomed.* 29, 162–174.
- Shiroishi, M.S., Castellazzi, G., Boxerman, J.L., D'Amore, F., Essig, M., Nguyen, T.B., Provenzale, J.M., Enterline, D.S., Anzalone, N., Dörfler, A., Rovira, A., Wintermark, M., Law, M., 2015. Principles of T2*-weighted dynamic susceptibility contrast MRI technique in brain tumor imaging. *J. Magn. Reson. Imaging* 41, 296–313.
- Vicente, J., Fuster-García, E., Tortajada, S., García-Gómez, J.M., Davies, N., Natarajan, K., Wilson, M., Grundy, R.G., Wesseling, P., Monleón, D., Celda, B., Robles, M., Peet, A.C., 2013. Accurate classification of childhood brain tumours by in vivo 1H MRS-a multi-centre study. *Eur. J. Cancer* 49, 658–667.
- Withey, S., Macpherson, L., Oates, A., Powell, S., Novak, J., Abernethy, L., Pizer, B., Grundy, R., Bailey, S., Mitra, D., Arvani, T., 2019. Multicentre study of perfusion magnetic resonance imaging in paediatric brain tumours. *Neuro-oncology* iv10.
- Zarinabad, N., Abernethy, L.J., Avula, S., Davies, N.P., Gutierrez, D.R., Jaspán, T., Macpherson, L., Mitra, D., Rose, H.E.L., Wilson, M., Morgan, P.S., Bailey, S., Pizer, B., Arvanitis, T.N., Grundy, R.G., Auer, D.P., Peet, A., 2018. Application of pattern recognition techniques for classification of pediatric brain tumors by in vivo 3T 1h-mr spectroscopy — a multi-center study. *Magn. Reson. Med.* 2366, 2359–2366.
- Zarinabad, N., Abernethy, L.J., Avula, S., Davies, N.P., Rodríguez Gutierrez, D., Jaspán, T., MacPherson, L., Mitra, D., Rose, H.E.L., Wilson, M., Morgan, P.S., Bailey, S., Pizer, B., Arvanitis, T.N., Grundy, R.G., Auer, D.P., Peet, A., 2017. Application of pattern recognition techniques for classification of pediatric brain tumors by in vivo 3T ¹H-MR spectroscopy-A multi-center study. *Magn. Reson. Med.* 2366, 2359–2366.
- Zhou, X.J., Magin, R., Thulborn, K., Xie, K., Stebbins, G., 2011. Reduction of artifacts arising from non-ideal gradients in fast magnetic resonance imaging.