

## Sex differences in catheter ablation of atrial fibrillation

Kloosterman, Marielle; Chua, Winnie Wei Ling; Fabritz, Larissa; Al-Khalidi, Hussein R.; Schotten, Uli; Nielsen, Jens C; Piccini, , Jonathan P; Di Biase, Luigi ; Häusler, Karl Georg; Todd, Derick; Mont, Lluís; Van Gelder, Isabelle C; Kirchhof, Paulus

DOI:

[10.1093/europace/euaa015](https://doi.org/10.1093/europace/euaa015)

License:

Other (please specify with Rights Statement)

*Document Version*

Peer reviewed version

*Citation for published version (Harvard):*

Kloosterman, M, Chua, WWL, Fabritz, L, Al-Khalidi, HR, Schotten, U, Nielsen, JC, Piccini, , JP, Di Biase, L, Häusler, KG, Todd, D, Mont, L, Van Gelder, IC & Kirchhof, P 2020, 'Sex differences in catheter ablation of atrial fibrillation: results from AXAFA-AFNET 5', *Europace*, vol. 22, no. 7, euaa015, pp. 1026-1035.  
<https://doi.org/10.1093/europace/euaa015>

[Link to publication on Research at Birmingham portal](#)

### **Publisher Rights Statement:**

This is a pre-copyedited, author-produced version of an article accepted for publication in *Europace* following peer review. The version of record Mariëlle Kloosterman, Winnie Chua, Larissa Fabritz, Hussein R Al-Khalidi, Ulrich Schotten, Jens C Nielsen, Jonathan P Piccini, Luigi Di Biase, Karl Georg Häusler, Derick Todd, Lluís Mont, Isabelle C Van Gelder, Paulus Kirchhof, for the AXAFA-AFNET 5 investigators, Sex differences in catheter ablation of atrial fibrillation: results from AXAFA-AFNET 5, *EP Europace*, , euaa015, <https://doi.org/10.1093/europace/euaa015> is available online at: <https://academic.oup.com/europace/advance-article-abstract/doi/10.1093/europace/euaa015/5788539>

### **General rights**

Unless a licence is specified above, all rights (including copyright and moral rights) in this document are retained by the authors and/or the copyright holders. The express permission of the copyright holder must be obtained for any use of this material other than for purposes permitted by law.

- Users may freely distribute the URL that is used to identify this publication.
- Users may download and/or print one copy of the publication from the University of Birmingham research portal for the purpose of private study or non-commercial research.
- User may use extracts from the document in line with the concept of 'fair dealing' under the Copyright, Designs and Patents Act 1988 (?)
- Users may not further distribute the material nor use it for the purposes of commercial gain.

Where a licence is displayed above, please note the terms and conditions of the licence govern your use of this document.

When citing, please reference the published version.

### **Take down policy**

While the University of Birmingham exercises care and attention in making items available there are rare occasions when an item has been uploaded in error or has been deemed to be commercially or otherwise sensitive.

If you believe that this is the case for this document, please contact [UBIRA@lists.bham.ac.uk](mailto:UBIRA@lists.bham.ac.uk) providing details and we will remove access to the work immediately and investigate.

## Sex Differences in Catheter Ablation of Atrial Fibrillation

### -Results from AXAFA-AFNET 5-

Brief title: Sex differences in catheter ablation

Mariëlle Kloosterman<sup>a</sup>, MD, Winnie Chua<sup>b</sup>, PhD, Larissa Fabritz<sup>b</sup>, MD, PhD, Hussein R. Al-Khalidi<sup>c</sup>,  
PhD, Uli Schotten<sup>d</sup>, MD, PhD, Jens C. Nielsen<sup>e</sup>, MD, PhD, Jonathan P. Piccini<sup>c</sup>, MD, PhD,  
Luigi Di Biase<sup>f</sup>, MD, PhD, Karl Georg Häusler<sup>g</sup>, MD, PHD, Derick Todd<sup>h</sup>, MD, PhD, Lluís Mont<sup>i</sup>,  
MD, PhD, Isabelle C. Van Gelder<sup>a</sup>, MD, PhD, Paulus Kirchhof<sup>b</sup>, MD, PhD,

for the AXAFA-AFNET 5 investigators

<sup>a</sup> University of Groningen, University Medical Center Groningen, Groningen, the Netherlands

<sup>b</sup> Institute of Cardiovascular Sciences, University of Birmingham, Birmingham, United Kingdom

<sup>c</sup> Duke University Medical Center, Durham, United States of America

<sup>d</sup> University of Maastricht, Maastricht Medical Center, Maastricht, the Netherlands

<sup>e</sup> Aarhus University Hospital, Aarhus, Denmark

<sup>f</sup> Montefiore Weiler Hospital, New York, United States of America

<sup>g</sup> Universitätsklinikum Würzburg, Würzburg, Germany

<sup>h</sup> Liverpool Heart and Chest Hospital, Liverpool, United Kingdom

<sup>i</sup> Hospital Clinic, Universitat de Barcelona, Barcelona, Spain

Total word count (incl. references and figure legends): 3216

Abstract word count: 250

Number of references: 20

Number of tables included: 6

Number of figures included: 2

### Address for correspondence

Isabelle C. Van Gelder, MD, PhD

Department of Cardiology,

University Medical Center Groningen, University of Groningen

P.O. Box 30.001, 9700 RB Groningen, The Netherlands

Telephone +31 50 3611327, Fax +31 50 3614391

E-mail: [i.c.van.gelder@umcg.nl](mailto:i.c.van.gelder@umcg.nl)

## **Abstract**

**Background:** Women seem to experience lower efficacy and safety of atrial fibrillation (AF) ablation.

**Methods:** We assessed first AF ablation outcomes on continuous anticoagulation in 633 patients (209 [33%] women and 424 [67%] men) in a pre-specified subgroup analysis of the AXAFA-AFNET 5 trial. We compared the primary outcome (death, stroke or TIA, or major bleeding) and secondary outcomes (change in quality of life (QoL) and cognitive function) 3 months after ablation.

**Results:** Women were older (66 vs. 63 years,  $P < 0.001$ ), more often symptomatic, had lower QoL and a longer history of AF. No sex differences in ablation procedure were found. Women stayed in hospital longer than men ( $2.1 \pm 2.3$  vs.  $1.6 \pm 1.3$  days,  $P = 0.004$ ). The primary outcome occurred in 19 (9.1%) women and 26 (6.1%) men,  $P = 0.19$ . Women experienced more bleeding events requiring medical attention (5.7% vs. 2.1%,  $P = 0.03$ ), while rates of tamponade (1.0% vs 1.2%) or intracranial haemorrhage (0.5% vs. 0%) did not differ. Improvement in QoL after ablation was similar between the sexes (SF-12 physical 5.1% and 5.9%,  $P = 0.26$ ; and SF-12 mental 3.7% and 1.6%,  $P = 0.17$ ). At baseline, (mild) cognitive impairment according to the Montreal Cognitive Assessment was present in 65 (32%) women and 123 (30%) men and declined to 23% for both sexes at end of follow-up.

**Conclusion:** Women and men experience similar improvement in QoL and the Montreal Cognitive Assessment after AF ablation on continuous anticoagulation. Longer hospital stay, a trend towards more nuisance bleeds, and a lower overall QoL in women were the main differences observed.

**Keywords:** sex differences, catheter ablation, safety, quality of life, cognitive function

## **Introduction**

Catheter ablation has become a routine procedure in patients with atrial fibrillation (AF) to improve symptoms and quality of life by reducing the arrhythmia burden. Since women experience more AF related symptoms than men, and report a lower quality in AF, they have potentially the most to gain from a successful ablation.(1) However, women are less likely to receive catheter ablation, and in the last ten years the proportion of women undergoing AF ablation has not increased in the similar manner as in men.(2-4) Compared to men, women who undergo AF ablation are generally 4-6 years older, seem to experience more AF recurrences, and appear to be at greater risk of having ablation related complications.(2,3,5) In several clinical scoring systems including procedural failure(6) or procedure related complications(7), female sex is one of the predictors, and in particular vascular injury or cardiac tamponade after catheter ablation seem to occur more often in women.(8) However, several other long-term observational studies found no sex difference in outcome or complications after ablation, suggesting selection bias in earlier cohorts.(9,10) Further, female sex was not found to be a predictor of AF recurrence in any of the 23 studies included in a systematic review of AF recurrence predictors after ablation.(11) Little is known about the safety of AF ablation on continuous anticoagulation with regard to sex.

There is a lack of sex-specific analyses of large, prospective, contemporary AF ablation data sets with well-structured patient-, procedure-, and outcome variables. We set out to study sex-related differences in catheter ablation procedure, outcome, quality of life, and cognitive function in a predefined substudy of all patients included in *The Anticoagulation using the direct factor Xa inhibitor apixaban during Atrial Fibrillation catheter Ablation: Comparison to vitamin K antagonist therapy* (AXAFA-AFNET 5) trial.(12)

## **Methods**

The AXAFA-AFNET 5 study was a prospective, multi-centre, 1:1 randomized, blinded outcome assessment study that compared continuous therapy of the non-vitamin K antagonist (NOAC) apixaban therapy to vitamin K antagonist (VKA) therapy in patients undergoing first AF ablation. All patients had symptomatic non-valvular AF, a clinical indication for catheter ablation on continuous anticoagulant therapy, and at least one established stroke risk factor (age  $\geq 75$  years, symptomatic heart failure, hypertension, diabetes mellitus or prior stroke or transient ischemic attack). Full inclusion and exclusion criteria of the AXAFA-AFNET 5 trial have been previously published.(12)

Patients randomized to apixaban received 5 mg twice daily, which was continued during the ablation procedure without interruption. Dose adjustment occurred if two or more of the following patient characteristics were present: age  $\geq 80$  years, weight  $\leq 60$ kg, or serum creatinine level  $\geq 1.5$ mg/dL (133  $\mu$ mol/L). Patients randomized to VKA were treated according to site specific anticoagulation therapy routine (warfarin, phenprocoumon, or acenocoumarol). Patients could undergo ablation after at least 30 days of continuous anticoagulation which was defined as having taken all but one dose, based on pill count, in the apixaban group and at least 3 INR measurements prior to ablation, with the last INR before ablation being  $\geq 1.8$ , in patients receiving VKA therapy. Ablation could be performed earlier if atrial thrombi were excluded by transoesopagheal echocardiography and patients had at least 2 adjacent apixaban doses, or an INR  $\geq 1.8$ , before ablation. The ablation procedure followed current guidelines, could be either radiofrequency ablation or cryoballoon ablation, and was conducted according to local practice. Throughout the ablation procedure an activated clotting time (ACT)  $>300$ s was targeted. Directly after ablation a mandatory echocardiogram was performed to detect pericardial effusion.

The trial was conducted in 48 sites in Europe and North America, and sponsored by AFNET ([www.kompetenznetz-vorhofflimmern.de](http://www.kompetenznetz-vorhofflimmern.de)) All adverse events were adjudicated by an independent endpoint review committee blinded to study group and INR values. The study was conducted in accordance with the declaration of Helsinki and the International Conference on Harmonization Good Clinical Practice Guidelines (ICH-GCP). The ethical review board of all study centres approved the study protocol. All patients provided written informed consent before inclusion.

#### *Study population*

The analysis population included all patients from the AXAFA trial population who were randomized and underwent catheter ablation (i.e., modified intention-to-treat [mITT] population, Figure 1).

### *Study outcomes and measures*

Primary outcome was the composite of all-cause death, stroke or TIA, or major bleeding (defined as Bleeding Academic Research Consortium score (13), developed to capture peri-interventional bleeding complications [BARC]  $\geq 2$ ) measured from randomization until the 3-month follow-up visit. Pre-specified secondary outcomes of the AXAFA-AFNET 5 trial included changes in quality of life, cognitive function, prevalence and number of MRI-detected acute brain lesions, and nights spent in hospital after the index ablation.

At baseline patient characteristics, symptoms (assessed using the modified European Heart Rhythm Association (mEHRA) score), quality of life (assessed using the 12-item Short Form Health Survey (SF-12), the Karnofsky Performance Status Scale, and Euro-QoL 5-Dimensional questionnaire (EQ-5D)) and cognitive function (assessed by the Montreal Cognitive Assessment Test (MoCA) test were collected. The SF-12 survey consists of multiple choice questions that range in a stepwise fashion from limited a lot/all the time to not limited at all/none of the time. The individual items are transformed to a physical and mental health score ranging from 0-100, with lower scores representing a lower quality of life. The Karnofsky scale (ranging from 0-100) describes global function status with scores from 0-40 implying inability to care for self; 50-70 inability to work, varying amount of assistance needed; and 80-100 ability to carry on normal activity and to work. The EQ-5D score rates mobility, self-care, usual activities, pain/discomfort and anxiety/depression on a 3-level scale ranging from no problems to severe problems. The final index score, using the UK value set ranges from 0-1, with lower scores representing a lower quality of life. The MoCA test contains items on orientation, attention, verbal memory, language, visuospatial function, and executive function. Scores range from 0 to 30, with a score of  $\geq 26$  being considered normal.(12)

Follow up visits took place at the time of ablation and after 3-months. At the 3-month visit quality of life, and MoCA scores were reassessed. Additionally, a 12 lead ECG and 24 hour Holter was performed to detect AF recurrence after the blanking period as per consensus definition. Data on hospitalizations

and nights spend in hospital after index ablation was collected. A subset of patients received a brain MRI 3-48 hours after the ablation to detect acute brain lesions. MRI sequences used were previously described.(12)

### **Statistical analyses**

Descriptive statistics for continuous and categorical variables were summarized as means (SDs) and medians (25<sup>th</sup> [q1], 75<sup>th</sup> [q3] percentiles), and counts (percentages), respectively. Comparisons between continuous variables were performed using the Wilcoxon rank-sum test or two-sample t-test depending on normality; comparisons between nominal variables were performed using the Pearson's  $\chi^2$  test or Fisher's exact test, depending on expected cell sizes. Changes in quality of life (SF-12, Karnofsky scale, and EQ-5D,) and MoCA scores from baseline to 3 months' post index ablation were assessed. Paired measurements in women and men were compared with the Wilcoxon matched pairs signed rank. The amount of quality of life change between the sexes was compared with the Wilcoxon rank-sum test. A multivariable Cox proportional hazards model, controlling for the baseline risk factors of age, weight, type of AF, CHADS<sub>2</sub>VAS<sub>2</sub>c-score, and randomization arm was conducted to assess differences in primary endpoint occurrence between the sexes. The Cox proportional hazards assumption was assessed by visually inspecting plots of Schoenfeld residuals against time, which showed no proportionality violation. Some variables had missing data; in case of incomplete data the number of patients with available data is added to the tables. All analyses were two-sided and tested at the nominal 0.05 significance level. No adjustments were made for multiple comparisons. All statistical analyses were performed with IBM SPSS Statistics version 24 (IBM Corp., Armonk, NY, USA)

### **Results**

#### *Patient characteristics and AF complaints*

From the 674 patients who were randomized in the AXAFA-AFNET 5 study, 633 patients underwent catheter ablation, forming the modified intention-to-treat (mITT) population (Figure 1). Women (n=209 [33%]) were older (66 vs. 63 years, P<0.001) and consequently had a higher CHA<sub>2</sub>DS<sub>2</sub>-VASc score (3.2±1.1 vs. 2.1±1.1, p<0.001) compared to men (n=424 [67%]) (Table 1). Other comorbidities were

well balanced between the sexes, with the exception of coronary artery disease that was more often present in men (5.3% vs. 15.6%,  $P < 0.001$ ). The average number of risk factors was  $2.9 \pm 1.1$  in women and men. Women more often had paroxysmal AF (64% vs. 55%), with a higher frequency of AF episodes, and more often experienced their first occurrence of AF symptoms  $>12$  months before ablation (75% vs. 63%). The modified EHRA score (IIb-IV) was higher in women than in men (Table 1). No relevant differences in concomitant medication use were observed.

#### *Index catheter ablation*

Median time from randomization to ablation was similar in women and men (36 and 35 days, respectively). Heart rhythm at the start of ablation, type of ablation, ablation energy source, and procedure time did also not differ between the sexes (Table 2). Women and men received comparable continuous anticoagulation. Women stayed longer in hospital after ablation than men ( $2.1 \pm 2.3$  vs.  $1.6 \pm 1.3$  days,  $P = 0.004$ ).

#### *Primary outcome*

The primary outcome (all-cause death, stroke or TIA, or BARC 2-5 bleeding) was observed in 19 (9.1%) women and 26 (6.1%) men,  $P = 0.19$  (Table 3), with an adjusted hazard ratio of 1.5 (95% CI 0.75 – 3.0;  $P = 0.25$ ) for the primary endpoint in women compared to men (Figure 2). Vascular access complications requiring therapy did not differ between sexes, but BARC 2 bleeding events occurred more often in women than in men (5.7% vs. 2.1%). Other bleeding events, including TIMI (1.0% vs. 0.5%) and ISTH (5.3% vs. 3.1%) major bleeding, cardiac tamponade (1.0% vs. 1.2%), death (0.5% vs. 0.2%) or stroke or TIA (0% vs. 0.5%) occurrence did not differ between the sexes (Table 3).

AF recurrence rate was not significantly different between women and men (34% vs. 28%,  $P = 0.09$ ). Similarly, there was no cardiovascular hospitalization difference (25.4% vs. 19.6%,  $P = 0.10$ ). Both women and men spend a median of 3 nights in hospital during follow-up (Table 3).

#### *Secondary outcomes*

##### Quality of life



Baseline quality of life was lower in women than in men (Table 4). This was true for the SF-12 physical component, the SF-12 mental component, the Karnofsky scale, and the EQ-5D score. In women and men, the SF-12 physical (5.1% vs. 5.9%) and mental (3.7% vs. 1.6%) component scores increased and the Karnofsky scale remained stable or improved (both interquartile range 0 – 12.5%) during follow-up. The amount of improvement did not differ statistically between the sexes. The EQ-5D score did not improve in women, contrary to men. At the end of follow up women continued to have a lower quality of life with lower SF-12 physical, SF-12 mental and EQ-5D scores.

#### Cognitive function and acute brain lesions

Baseline MoCA scores were similar in women and men, with a median of 27 points (Table 5). At the end of follow-up, MoCA increased by a median of 1 point (ranging from -1 to 2 points) in women and 0 (ranging from -1 to 2 points) in men,  $P=0.37$ . At least mild cognitive impairment according to the MoCA score was observed in 65 (32%) women and 123 (30%) men at baseline, this reduced to 23% for both sexes at end of follow-up. 323 patients had analysable MRIs. Acute brain lesions were detected in 30/106 (28%) of women and 54/217 (25%) of men,  $P=0.56$  (Table 6).

## **Discussion**

In this contemporary cohort of patients undergoing AF ablation on continuous anticoagulation, women were older than men, more often symptomatic, and with lower quality of life at baseline. There was no difference between women and men in primary outcomes after AF ablation with a similar rate of adverse events, with the exception of a trend towards more nuisance (BARC 2) bleedings and a longer time spent in hospital for the procedure. Quality of life and MoCA test results improved in a similar fashion in both sexes, although overall quality of life remained lower in women than in men.

### *Patient population*

Catheter ablation is a mainstay in the treatment of AF, but currently most patients receiving an ablation for AF are white men. Registry studies as well as randomized controlled trials show an underrepresentation of women, with only ~20-40% females.(2-4) This may represent under-treatment of women, who besides more AF-related symptoms are also less likely to successfully respond to pharmacological treatment and more often fail antiarrhythmic medication than men before receiving catheter ablation.(1) Women who do receive an ablation tend to be older, have a longer duration of the arrhythmia, and more comorbidities including hypertension and valvular disease.(5,10) The lower success rate of catheter ablation in women, as well as the higher complication rate, may be partially related to these high risk features.(1) Women included in AXAFA-AFNET 5 had a longer history of AF and were on average 3 years older, but had a largely similar underlying risk factor burden. In the randomized FIRE AND ICE trial, and the German Ablation Registry women were on average 5 to 7 years older, and had worse kidney function (FIRE AND ICE), and more often hypertensive heart disease (German Ablation Registry).(3,4) Both these studies describe distinct sex-related outcomes in contrast to our observations. Whether observed sex-differences are solely a reflection of older age with more risk factors in women, or dependent on sex-differences in anatomy, physiological- and pathophysiological mechanisms, remains incompletely understood.(1)

### *Catheter ablation procedure*

No significant differences were observed in index catheter ablation procedure itself. The only difference was the observation that women had a prolonged hospital stay after index ablation of ~0.5 day, an observation also reported in the FIRE AND ICE trial.(4) Reasons remain elusive, but may include more (atypical) symptoms after catheter ablation, in line with women's higher symptom burden in general, or caution of the treating physician who may expect a more complicated course of the ablation procedure in women.(1)

### *Outcomes*

BARC 2 type bleeding (bleeding events that required medical attention)(13) occurred slightly more often in women. Vascular access complications that resulted in actual prolongation of in-hospital stay or specific therapy such as surgery or supplementation of coagulant factors were extremely rare and occurred in only two women and one man. Most studies describe a higher prevalence of nonfatal access complications in women.(2,3,6) Reasons may include the older age at the time of ablation, sex-specific anatomical varieties of the groin vessels, or obesity, an associated risk factor for more complications.(1) Almost all women included in AXAFA had BMIs within the 25-30 kg/m<sup>2</sup> range, however, the same was true for the men. Bleeding events requiring invasive treatment beyond medical attention (e.g. surgery or transfusion) did not differ between the sexes. Importantly, cardiac tamponade did not occur more often in women. In AXAFA-AFNET 5 the ablation approach was similar between the sexes, i.e. women did not receive more extensive ablations with additional ablation lines. Also, per protocol, ACT was closely monitored and targeted >300 ms during the ablation, which may have contributed to improved procedural safety. Furthermore, included sites in the AXAFA-AFNET 5 study had experienced personnel. The influence of poorer outcomes in low-volume centres might have therefore been prevented.(8) Short-term AF recurrence did not differ between the sexes. Similar early success in both women and men was also observed in the FIRE AND ICE trial.(4) Long-term efficacy, which was not studied in AXAFA-AFNET 5, is often lower in women and is heavily influenced by a longer history of AF, as well as non-paroxysmal AF.(14)

### *Quality of life*

Quality of life was lower in women at baseline, and remained lower at follow-up. This lower quality of life in women was frequently observed and reflects more symptoms, a reduced capacity to carry on normal activity and work, and is associated with more concerns regarding treatment approaches.(15) However, with the exception of the EQ-5D score, the improvement in quality of life was similar, implying that benefits of ablation are largely the same in women in men, making it a more promising strategy than anti-arrhythmic drugs alone in improving patient's life.(16,17) Advancing age is associated with more concerns and anxiety regarding personal health, and a negative impact on overall health status status.(16,17) The lack of improvement in the EQ-5D score may reflect the higher median age of women in our cohort. Incorporation of health-related questionnaires may show which patients could potentially benefit the most from catheter ablation, and may be used as a means of minimizing sex-differences in management strategies.(15)

### *Cognitive function and MRI-detected acute brain lesions*

AF is associated with a ~1-3 fold increased risk of cognitive impairment and dementia.(18) Especially vascular risk factors, including diabetes mellitus and stroke, are strongly associated with cognitive impairment and a higher prevalence of dementia.(18) To our knowledge no clear sex-specific differences in the relationship between cognition and sex in patients with AF have been observed so far. In AXAFA-AFNET 5, MoCA scores were similar in women and men. The number of study patients with acute brain lesions after ablation (~25%) was in line with previous publications (19,20) and without significant differences in women and men. In light of this relatively high percentage of acute brain lesions, the observation that in both women and men the presence of at least mild cognitive dysfunction according to the MoCA test decreased in a similar manner from 32% and 30%, respectively to 23% at the end of follow up is reassuring but may be related to repetitive testing.

### *Future implications*

The current study supplies evidence that catheter ablation provides uniform benefit to women and men in terms of effectiveness in maintaining short-term sinus rhythm increase in QoL and cognitive function as assessed by the MoCA test. Importantly, no major differences regarding safety were observed. With the exception of slightly more nonfatal bleeding BARC 2 bleeding events, no differences in tamponade occurrence or vascular injury requiring transfusion were observed. Evolving ablation techniques, intracardiac echocardiography and ultrasound guidance may in the future further reduce complications and completely eliminate any difference in complication rates between women and men. Increase in quality of life is one of the key reasons to perform ablation. The fact that women can achieve similar results as men is an important reason not to withhold this therapy from women. The barriers, as well as facilitators, of catheter ablation in women deserve more attention as offering catheter ablation to more women holds an opportunity to positively affect outcomes.

### *Study limitations*

Although, this was a pre-specified analysis of AXAFA-AFNET 5, the study was not powered to detect sex differences. While patient characteristics, anticoagulation treatment, and ablation procedure did not show large differences between women and men, unmeasured confounders may be unbalanced. Prevalence of certain outcome events, including death and stroke or cardiac tamponade, was low which may have limited power to detect sex-differences. Data on incidence of esophageal thermal lesions was missing. Additionally, changes in QoL and cognitive function were analyzed at 3-months and therefore reflect short-term outcomes that prohibit making valid conclusions about the long-term effects of AF catheter ablation on these parameters.

### **Conclusion**

The current AXAFA-AFNET 5 analysis revealed no major sex-differences in terms of efficacy and safety of first-time catheter ablation under continuous anticoagulation. The increase in QoL and improvement in MoCA test score during follow up was largely similar for women and men. Therefore,

considering that hospital stay may be slightly longer in women than in men, ablation should not be withheld from women with symptomatic AF.

### **Funding**

Pfizer/BMS, and from the German Centre for Cardiovascular Research supported by the German Ministry of Education and Research (DZHK, via a grant to AFNET). This work received additional support from European Union (grant agreement No 633196 [CATCH ME]), European Union BigData@Heart (grant agreement EU IMI 116074), British Heart Foundation (FS/13/43/30324; PG/17/30/32961 to PK; AA/18/2/34218), and Leducq Foundation.

### **Declaration of Interest**

KGH reports study grants by Bayer and Sanofi-Aventis, lecture fees/advisory board fees from Sanofi-Aventis, Pfizer, Bristol-Myers-Squibb, Boehringer Ingelheim, Daiichi Sankyo, Biotronik, W. L. Gore & Associates, Edwards Lifesciences and Medtronic.

DT reports patient recruitment based funding from Bristol-Myers-Squibb-Pfizer during the conduct of the study; personal fees from Abbott UK, personal fees from Boston Scientific UK, personal fees from Medtronic UK, and personal fees from Daiichi-Sankyo, outside the submitted work.

JCN reports grants from Novo Nordisk Foundation (NNF16OC0018658) outside the submitted work.

US reports personal fees from EP Solutions, grants from Roche, outside the submitted work.

JPP reports grants from AF NET, during the conduct of the study; grants from Abbott, personal fees from Allergan, grants from Bayer, grants from Boston Scientific, grants and personal fees from Philips, personal fees from Medtronic, personal fees from Milestone, and personal fees from Sanofi, outside the submitted work.

PK receives research support for basic, translational, and clinical research projects from European Union, British Heart Foundation, Leducq Foundation, Medical Research Council (UK), and German Centre for Cardiovascular Research, from several drug and device companies active in atrial fibrillation, and has received honoraria from several such companies in the past. PK is listed as inventor on two patents held by University of Birmingham (Atrial Fibrillation Therapy WO 2015140571, Markers for Atrial Fibrillation WO 2016012783).

LM reports grants from Abbott Medical, personal fees from Abbott Medical, grants from Boston Scientific, personal fees from Boston Scientific, grants from Medtronic, personal fees from Medtronic, grants from Biotronik, grants from Johnson&Johnson, personal fees from Johnson&Johnson, personal fees from MicroPort, other from Galgo Medical, outside the submitted work.

### **Figure legends**

#### **Figure 1. Flowchart**

Flowchart of the AXAFA-AFNET 5 study. The current analysis focused on the patients who underwent ablation, the modified intention to treat (mITT) set.

**Figure 2. Cumulative Primary Outcome Occurrence**

Shows the cumulative occurrence of primary outcome events from randomization until 90 days follow up.

\*Adjusted for age, weight, type of AF, CHADS2VAS2c-score, and randomization arm.

**Table 1. Baseline characteristics ablation population**

	<b>All patients (N=633)</b>	<b>Women (N=209)</b>	<b>Men (N=424)</b>	<b>P-value</b>
<b>Clinical characteristics*</b>				
Age – years	64 (58, 70)	66 (60, 72)	63 (57, 69)	<b>&lt;0.001</b>
Height – cm	175 (168, 182)	165 (161, 170)	180 (174, 185)	<b>&lt;0.001</b>

Weight – kg	87 (77, 99)	77 (68, 90)	90 (82, 103)	<0.001
Body mass index – mg/kg <sup>2</sup>	28.3 (25.3, 31.6)	28.0 (24.9, 32.7)	28.4 (25.4, 31.2)	0.81
Systolic blood pressure – mmHg	138 (125, 150)	140 (127, 152)	137 (124, 150)	0.15
Diastolic blood pressure – mmHg	82 (76, 90)	83 (74, 90)	82 (76, 90)	0.884
CHA <sub>2</sub> DS <sub>2</sub> -VASc score	2 (2, 3)	3 (2, 4)	2 (1, 3)	<0.001
CHA <sub>2</sub> DS <sub>2</sub> -VASc score - mean (SD)	2.4 (1.2)	3.2 (1.1)	2.1 (1.1)	<0.001
Randomization – n (%)				0.45
Apixaban†	318 (50.2)	100 (47.8)	218 (51.4)	
VKA	315 (49.8)	109 (52.2)	206 (48.6)	
<b>Medical history – n (%)</b>				
Hypertension	571 (90.2)	186 (89.0)	385 (90.8)	0.48
Diabetes mellitus	76 (12.0)	22 (10.5)	54 (12.7)	0.52
Chronic obstructive lung disease	39 (6.2)	12 (5.7)	27 (6.4)	0.86
Prior stroke or TIA	47 (7.4)	16 (7.7)	31 (7.3)	0.87
Clinical history of major bleeding	13 (2.1)	4 (1.9)	9 (2.1)	0.99
Coronary artery disease (history of myocardial infarction, percutaneous coronary intervention, or coronary artery bypass graft)	77 (12.2)	11 (5.3)	66 (15.6)	<0.001
Vascular disease (coronary artery disease, peripheral artery disease or carotid disease)	83 (13.1)	13 (6.2)	70 (16.5)	<0.001
Heart failure	212 (33.5)	74 (35.4)	138 (32.5)	0.48
NYHA I	62 (9.8)	15 (7.2)	47 (11.1)	
NYHA II	126 (19.9)	50 (23.9)	76 (17.9)	
NYHA III	24 (3.8)	9 (4.3)	15 (3.5)	
NYHA IV	0	0	0	
Symptomatic (NYHA II-III)	150 (23.7)	59 (28.2)	91 (21.5)	0.07
Valvular heart disease	73 (11.5)	22 (10.5)	51 (12.0)	0.69
Mitral valve disease‡	20 (3.2)	6 (2.9)	14 (3.3)	
Aortic valve disease‡	6 (0.9)	1 (0.5)	5 (1.2)	
<i>No. of risk factors</i> <sup>°</sup>				
Median (q1, q3)	3 (2-4)	3 (2-4)	3 (2-4)	0.76
Mean (SD)	2.9 (1.1)	2.9 (1.1)	2.9 (1.1)	0.52
<b>Rhythm and complaints – n (%)</b>				
AF pattern				<b>0.03</b>
Paroxysmal	367 (58.0)	134 (64.1)	233 (55.0)	
Persistent or long-standing persist	266 (42.0)	75 (35.9)	191 (45.0)	
Frequency of AF#				<b>0.01</b>
Occasional	128/593 (21.6)	34/203 (16.7)	94/390 (24.1)	
Intermediate	307/593 (51.8)	109/203 (53.7)	198/390 (50.8)	
Frequent	158/593 (26.6)	60/203 (29.6)	98/390 (25.1)	
First occurrence of AF symptoms				<b>0.003</b>
No symptoms in the past <12 months ago	40 (6.3)	6 (2.9)	34 (8.0)	
>12 months ago	169 (26.7)	46 (22.0)	123 (29.0)	
>12 months ago	424 (67.0)	157 (75.1)	267 (63.0)	
Modified EHRA scale				<b>&lt;0.001</b>
mEHRA I	40 (6.3)	6 (2.9)	34 (8.0)	
mEHRA IIa	164 (25.9)	33 (15.8)	131 (30.9)	
mEHRA IIb	205 (32.4)	76 (36.4)	129 (30.4)	
mEHRA III	208 (32.9)	84 (40.2)	124 (29.2)	
mEHRA IV	16 (2.5)	10 (4.8)	6 (1.4)	
<b>Concomitant medications – n (%)</b>				



Class Ia/Ic antiarrhythmics: flecainide, propafenone or quinidine	143 (22.6)	48 (23.0)	95 (22.4)	0.92
Class III antiarrhythmics: amiodarone, dronedarone or sotalol	132 (20.9)	41 (19.6)	91 (21.5)	0.68
Beta blockers	451 (71.2)	144 (68.9)	307 (72.4)	0.40
ACE inhibitor or angiotensin receptor blocker	388 (61.3)	119 (56.9)	269 (63.4)	0.12
Calcium channel antagonists	147 (23.2)	43 (20.6)	104 (24.5)	0.32
Diuretics	221 (34.9)	79 (37.8)	142 (33.5)	0.29
Antianginal medication	2 (0.3)	0	2 (0.5)	0.99
Antidiabetic medications	63 (10.0)	16 (7.7)	47 (11.1)	0.21
Statins	231 (36.5)	65 (31.1)	166 (39.2)	0.053

\*Values depicted as median (q1, q3) unless stated otherwise

† One woman received 2.5 mg twice daily., all other patients received 5 mg twice daily.

‡ Defined as at least moderate (grade II through IV)

# Number of patients with available information is given since some patients had missing values

° Includes advanced age ( $\geq 65$  years), overweight or obesity (BMI  $>25$ ), vascular disease, previous stroke or TIA, hypertension, diabetes mellitus, chronic obstructive lung disease, heart failure, and at least moderate mitral insufficiency.

ACE, angiotensin converting enzyme; AF, atrial fibrillation; EHRA, European Heart Rhythm Association; NYHA, New York Heart Association; SD, standard deviation; TIA, transient ischemic attack; VKA, vitamin K antagonist

**Table 2. Index ablation procedure information**

	<b>All patients (N=633)</b>	<b>Women (N=209)</b>	<b>Men (N=424)</b>	<b>P-value</b>
Days from randomization to ablation mean (SD)	38.0 (27.3)	37.6 (29.2)	38.2 (26.4)	0.78

median (q1, q3)	35 (20, 50)	36 (14, 53)	35 (22, 50)	0.57
INR prior to ablation in patients receiving VKA - mean (SD)	2.2 (0.5)	2.1 (0.3)	2.2 (0.6)	0.28
All, or all but one, dose of apixaban before ablation in patients receiving apixaban – n (%)	307/318 (97)	98/100 (98)	209/218 (96)	0.52
TEE prior to ablation – n (%)	549 (86.7)	181 (86.6)	368 (86.8)	0.99
Abnormal blood parameters – n (%)*				
Red blood cell count	65/618 (10.5)	26/206 (12.6)	39/412 (9.5)	0.27
White blood cell count	50/622 (8.0)	15/206 (7.3)	35/416 (8.4)	0.82
Platelet count	35/625 (5.6)	8/207 (3.9)	27/418 (6.5)	0.37
ALT	75/612 (12.3)	29/202 (14.4)	46/410 (11.2)	0.54
AST	59/582 (10.1)	26/195 (13.3)	33/387 (8.5)	0.13
Bilirubin	38/595 (6.4)	6/193 (3.1)	32/402 (8.0)	<b>0.04</b>
Hb	65/618 (10.5)	26/206 (12.6)	39/412 (9.5)	0.23
Rhythm at start of ablation – n (%)				0.10
Sinus rhythm	434 (68.6)	147 (70.3)	287 (67.7)	
AF	180 (28.4)	59 (28.2)	121 (28.5)	
AFL	12 (1.9)	0	12 (2.8)	
Pacing	7 (1.1)	3 (1.4)	4 (0.9)	
Type of ablation – n (%)				0.36
PVI	571 (90.2)	192 (91.9)	379 (89.4)	
PVI plus other ablation	59 (9.3)	17 (8.1)	42 (9.9)	
Other ablation without PVI	3 (0.5)	0	3 (0.7)	
Ablation energy source – n (%)				0.46
Radiofrequency	402 (63.5)	126 (60.3)	276 (65.1)	
Cryoablation	186 (29.4)	68 (32.5)	118 (27.8)	
Other	45 (7.1)	15 (7.2)	30 (7.1)	
Procedure duration (min) – median (q1, q3)	135 (110, 175)	134 (104-165)	138 (110, 180)	0.06
Vascular access complication†	3 (0.5)	2 (1.0)	1 (0.2)	0.21
Nights spent in hospital after ablation				
Median (q1, q3)	1 (1, 2)	1 (1, 2)	1 (1, 2)	<b>0.003</b>
Mean (SD)	1.7 (1.7)	2.1 (2.3)	1.6 (1.3)	<b>0.004</b>

\*Number of patients with available information is given since some patients had missing values

†Defined as leading to prolongation of in-hospital stay or specific therapy such as surgery or supplementation of coagulant factors.

AF, atrial fibrillation; AFL, atrial flutter; PVI, pulmonary vein isolation; SD, standard deviation; TEE, transoesophageal echocardiography.

**Table 3. Outcomes**

	<b>All patients (N=633)</b>	<b>Women (N=209)</b>	<b>Men (N=424)</b>	<b>P-value</b>
<b>Primary outcome*</b>				

Primary endpoint: composite all-cause death, stroke or major bleeding	45 (7.1%)	19 (9.1%)	26 (6.1%)	0.19
Death	2 (0.3%)	1 (0.5%)	1 (0.2%)	0.61
Stroke or TIA	2 (0.3%)	0	2 (0.5%)	0.32
Major bleeding (BARC 2-5)	42 (6.6%)	19 (9.1%)	23 (5.4%)	0.09
<u>BARC 2</u> : bleeding requiring medical attention	21 (3.3%)	12 (5.7%)	9 (2.1%)	<b>0.03</b>
<u>BARC 3a</u> : haemoglobin drop of 30 to < 50 g/L or requiring transfusion	9 (1.4%)	3 (1.4%)	6 (1.4%)	0.98
<u>BARC 3b</u> : haemoglobin drop >50 g/L, or requiring surgery or iv vasoactive agents, or cardiac tamponade	11 (1.7%)	3 (1.4%)	8 (1.9%)	0.68
<u>BARC 3c</u> : intracranial haemorrhage	1 (0.2%)	1 (0.5%)	0	0.15
TIMI major bleeding (intracranial bleed, or bleeding resulting in haemoglobin drop of ≥50 g/L, or bleeding resulting in death within 7 days)	4 (0.6%)	2 (1.0%)	2 (0.5%)	0.47
ISTH major bleeding	24 (3.8%)	11 (5.3%)	13 (3.1%)	0.19
Cardiac tamponade	7 (1.1%)	2 (1.0%)	5 (1.2%)	0.80
<b>Secondary outcomes</b>				
Cardiovascular hospitalization - n (%)	136 (21.5%)	53 (25.4%)	83 (19.6%)	0.10
Nights spent in hospital during follow-up - median (q1, q3)	3 (2-6) <i>n=105</i>	3 (2-7) <i>n=39</i>	3 (1-5) <i>n=66</i>	0.16
Recurrent AF	185/619 (29.9)	71/207 (34.3)	114/412 (27.7)	0.09
One time	69 (11.1)	27 (13.0)	42 (10.2)	
Several times	87 (14.1)	35 (16.9)	52 (12.6)	
Still in AF	29 (4.7)	9 (4.4)	20 (4.9)	

\*Shown are number of patients per group. Some patients had more than one event.

Number of patients with available information is given when patients had missing values

AF, atrial fibrillation; BARC, Bleeding Academic Research Consortium; ISTH, International Society on Thrombosis and Haemostasis, TIA, transient ischemic attack; TIMI, thrombolysis in Myocardial Infarction bleeding classification.

**Table 4. Quality of life**

	All patients	Women	Men	P-value*
<b>SF-12 physical component</b>				
Baseline	44.6 (37.7, 51.4)	42.2 (36.3, 48.6)	45.5 (39.2, 52.9)	<b>&lt;0.001</b>

Follow up	<i>n</i> =597 48.6 (42.0, 54.2) <i>n</i> =564	<i>n</i> =196 45.6 (39.8, 51.3) <i>n</i> =190	<i>n</i> =401 50.8 (43.2, 55.0) <i>n</i> =374	<b>&lt;0.001</b>
<u>Change</u>				
Absolute – median (q1, q3)	2.5 (-2.1, 8.1)	2.1 (-3.5, 8.4)	2.7 (-1.3, 8.0)	0.26
Percentage – median (q1, q3)	5.6 (-4.0, 20) <i>n</i> =547	5.1 (-6.9, 20.9) <i>n</i> =184	5.9 (-3.2, 19.1) <i>n</i> =363	
P-value†	<b>&lt;0.001</b>	<b>0.001</b>	<b>&lt;0.001</b>	
<b>SF-12 mental component</b>				
Baseline	50.3 (42.7, 57.5) <i>n</i> =598	48.2 (40.6, 55.2) <i>n</i> =197	51.8 (43.6, 58.0) <i>n</i> =401	<b>&lt;0.001</b>
Follow up	54.4 (46.0, 58.6) <i>n</i> =565	52.9 (45.2, 57.5) <i>n</i> =191	54.9 (47.3, 59.7) <i>n</i> =374	<b>0.01</b>
<u>Change</u>				
Absolute – median (q1, q3)	1.2 (-3.2, 8.0)	1.8 (-3.2, 8.7)	0.4 (-3.3, 7.7)	0.17
Percentage – median (q1, q3)	2.0 (-6.6, 17.3) <i>n</i> =548	3.7 (-6.1, 19.1) <i>n</i> =185	1.6 (-6.6, 16.3) <i>n</i> =363	
P-value†	<b>&lt;0.001</b>	<b>&lt;0.001</b>	<b>0.002</b>	
<b>Karnofsky scale</b>				
Baseline	90 (80, 90) <i>n</i> =633	80 (80, 90) <i>n</i> =209	90 (80, 90) <i>n</i> =424	<b>0.04</b>
Follow up	100 (90, 100) <i>n</i> =619	100 (90, 100) <i>n</i> =207	100 (90, 100) <i>n</i> =412	0.06
<u>Change</u>				
Absolute – median (q1, q3)	10 (0, 10)	0 (0, 10)	10 (0, 10)	0.60
Percentage – median (q1, q3)	11.1 (0.0, 12.5) <i>n</i> =619	0 (0, 12.5) <i>n</i> =207	11.1 (0.0, 12.5) <i>n</i> =412	
P-value†	<b>&lt;0.001</b>	<b>&lt;0.001</b>	<b>&lt;0.001</b>	
<b>EQ-5D score</b>				
Baseline	0.80 (0.69, 1.00) <i>n</i> =598	0.76 (0.69, 0.88) <i>n</i> =198	0.80 (0.73, 1.00) <i>n</i> =400	<b>&lt;0.001</b>
Follow up	0.85 (0.73, 1.00) <i>n</i> =565	0.80 (0.69, 1.00) <i>n</i> =188	0.85 (0.76, 1.00) <i>n</i> =377	<b>&lt;0.001</b>
<u>Change</u>				
Absolute – median (q1, q3)	0.00 (-0.04, 0.14)	0.00 (-0.07, 0.12)	0.00 (0.00, 0.15)	0.09
Percentage – median (q1, q3)	0.0 (-5.0, 17.6) <i>n</i> =547	0.0 (-11.7, 17.3) <i>n</i> =183	0.0 (0.0, 17.6) <i>n</i> =364	
P-value†	<b>&lt;0.001</b>	0.27	<b>&lt;0.001</b>	

All values are depicted as median (q1, q3). In all cells the number (n) of patients with available data is shown.

\*P-value women versus men

†P-value between baseline and end of follow-up measurements

EQ-5D, Euro-QoL 5-Dimensional questionnaire; SF-12, 12-item Short Form Health Survey.

**Table 5. Cognitive function**

	All patients	Women	Men	P-value*
MoCA score				

Baseline	27 (25, 29) <i>n</i> =618	27 (24, 29) <i>n</i> =206	27 (25, 29) <i>n</i> =412	0.54
Follow up	28 (26, 29) <i>n</i> =607	28 (26, 29) <i>n</i> =204	28 (26, 29) <i>n</i> =403	0.57
<b>Change</b>				
Absolute – median (q1, q3)	1 (-1, 2)	1 (-1, 2)	0 (-1, 2)	0.37
Percentage – median (q1, q3)	3.4 (-3.4, 7.7) <i>n</i> =597	3.4 (-3.3, 8.2) <i>n</i> =201	0 (-3.4, 7.4) <i>n</i> =396	
P-value†	<b>&lt;0.001</b>	<b>&lt;0.001</b>	<b>&lt;0.001</b>	
<b>At least mild cognitive impairment (MoCA &lt;26)</b>				
Baseline	188 (30) <i>n</i> =618	65 (32) <i>n</i> =206	123 (30) <i>n</i> =412	0.71
Follow up	141 (23) <i>n</i> =607	47 (23) <i>n</i> =204	94 (23) <i>n</i> =403	0.99
P-value	<b>&lt;0.001</b>	<b>&lt;0.001</b>	<b>&lt;0.001</b>	

MoCA scores are depicted as median (q1, q3), mild cognitive impairment as number (percentage). In all cells the number (n) of patients with available data is shown.

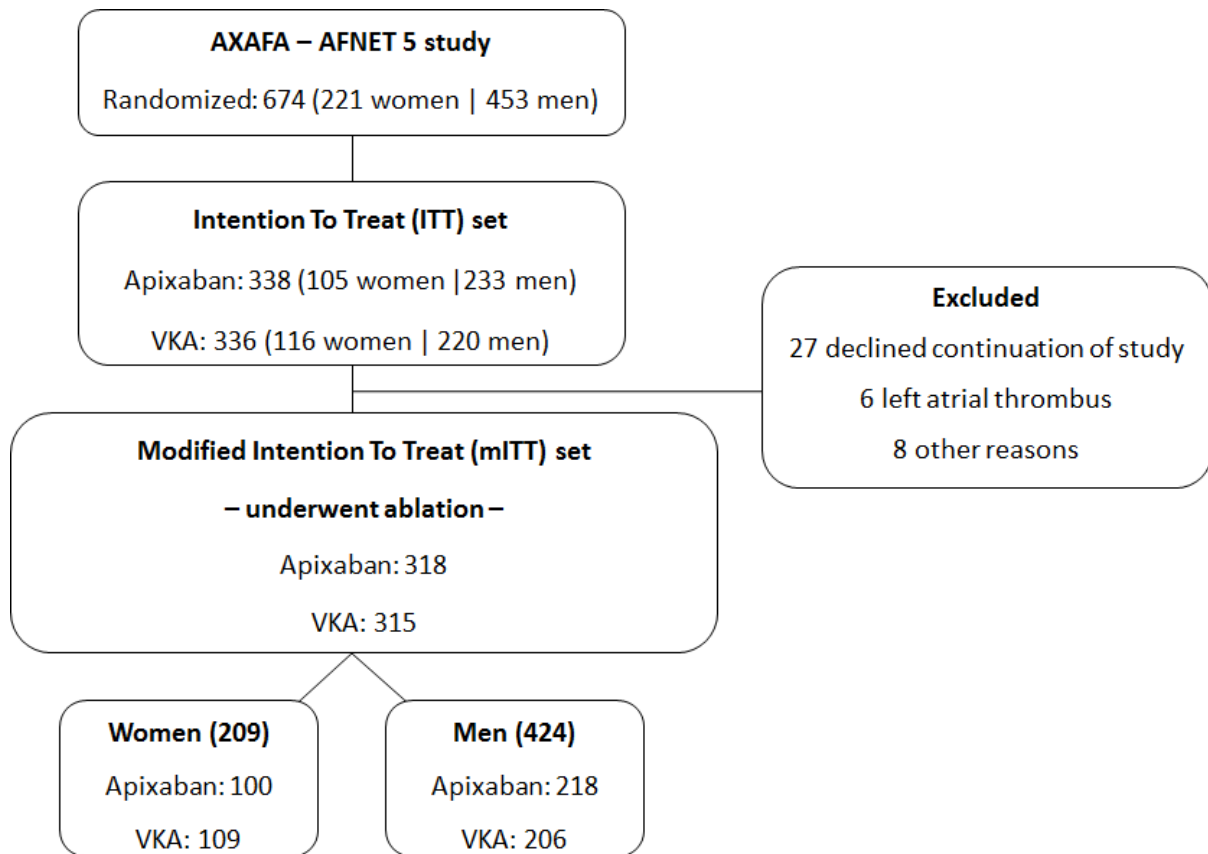
\*P-value women versus men

†P-value between baseline and end of follow-up measurements  
MoCA, the Montreal Cognitive Assessment Test.

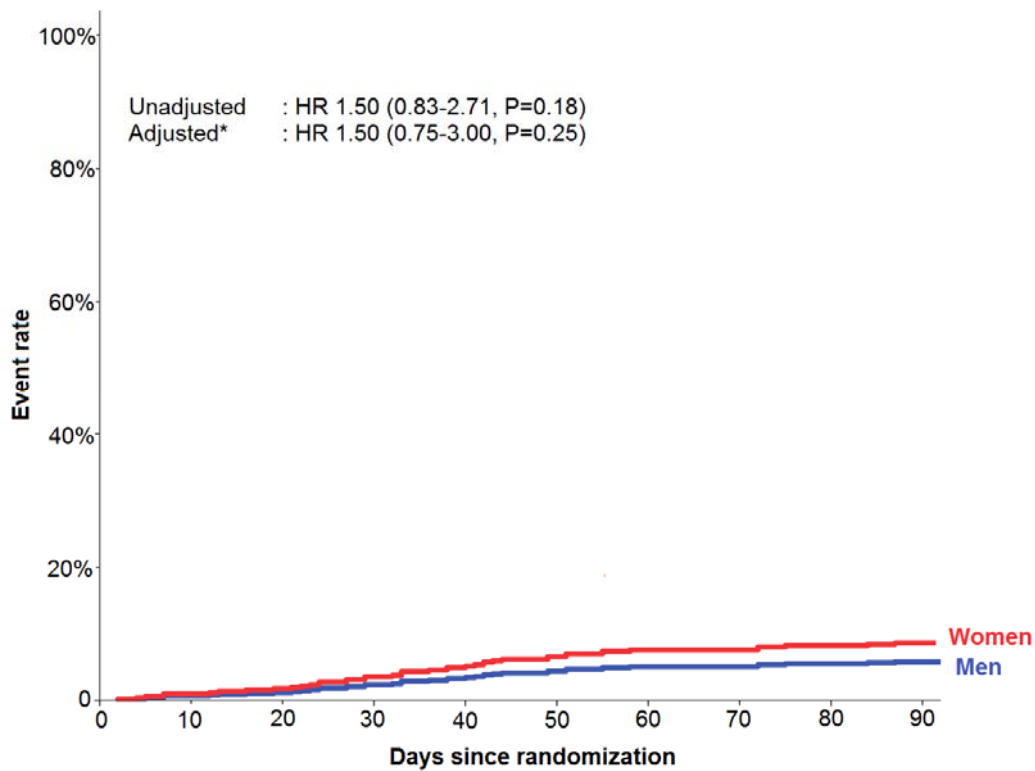
**Table 6. Acute brain lesions (MRI substudy)**

	<b>All patients (N=323)</b>	<b>Women (N=106)</b>	<b>Men (N=217)</b>	<b>P-value</b>
No. of lesions observed – n (%)				0.56
No lesion	239 (74.0)	76 (71.7)	163 (75.1)	
Exactly one lesion	46 (14.2)	14 (13.2)	32 (14.7)	
Exactly two lesions	21 (6.5)	8 (7.5)	13 (6.0)	
More than two lesions	17 (5.3)	8 (7.5)	9 (4.1)	

**Figure 1**



**Figure 2**



**References**

- (1) Linde C, Bongiorni MG, Birgersdotter-Green U, Curtis AB, Deisenhofer I, Furokawa T, et al. Sex differences in cardiac arrhythmia: a consensus document of the European Heart Rhythm Association, endorsed by the Heart Rhythm Society and Asia Pacific Heart Rhythm Society. *Europace* 2018 Oct 1;20(10):1565-1565ao.
- (2) Avgil Tsadok M, Gagnon J, Joza J, Behloul H, Verma A, Essebag V, et al. Temporal trends and sex differences in pulmonary vein isolation for patients with atrial fibrillation. *Heart Rhythm* 2015 Sep;12(9):1979-1986.
- (3) Zylla MM, Brachmann J, Lewalter T, Hoffmann E, Kuck KH, Andresen D, et al. Sex-related outcome of atrial fibrillation ablation: Insights from the German Ablation Registry. *Heart Rhythm* 2016 Sep;13(9):1837-1844.
- (4) Kuck KH, Brugada J, Furnkranz A, Chun KRJ, Metzner A, Ouyang F, et al. Impact of Female Sex on Clinical Outcomes in the FIRE AND ICE Trial of Catheter Ablation for Atrial Fibrillation. *Circ Arrhythm Electrophysiol* 2018 May;11(5):e006204.
- (5) Patel D, Mohanty P, Di Biase L, Sanchez JE, Shaheen MH, Burkhardt JD, et al. Outcomes and complications of catheter ablation for atrial fibrillation in females. *Heart Rhythm* 2010;7(2):167-172.
- (6) Winkle RA, Jarman JW, Mead RH, Engel G, Kong MH, Fleming W, et al. Predicting atrial fibrillation ablation outcome: The CAAP-AF score. *Heart Rhythm* 2016 Nov;13(11):2119-2125.
- (7) Padala SK, Gunda S, Sharma PS, Kang L, Koneru JN, Ellenbogen KA. Risk model for predicting complications in patients undergoing atrial fibrillation ablation. *Heart Rhythm* 2017 Sep;14(9):1336-1343.
- (8) Michowitz Y, Rahkovich M, Oral H, Zado ES, Tilz R, John S, et al. Effects of sex on the incidence of cardiac tamponade after catheter ablation of atrial fibrillation: results from a worldwide survey in 34 943 atrial fibrillation ablation procedures. *Circ Arrhythm Electrophysiol* 2014 Apr;7(2):274-280.
- (9) Teunissen C, Kassenberg W, van der Heijden JF, Hassink RJ, van Driel VJ, Zuithoff NP, et al. Five-year efficacy of pulmonary vein antrum isolation as a primary ablation strategy for atrial fibrillation: a single-centre cohort study. *Europace* 2016 Sep;18(9):1335-1342.
- (10) Ganesan AN, Shipp NJ, Brooks AG, Kuklik P, Lau DH, Lim HS, et al. Long-term outcomes of catheter ablation of atrial fibrillation: a systematic review and meta-analysis. *J Am Heart Assoc* 2013 Mar 18;2(2):e004549.
- (11) Balk EM, Garlitski AC, Alsheikh-Ali AA, Terasawa T, Chung M, Ip S. Predictors of atrial fibrillation recurrence after radiofrequency catheter ablation: a systematic review. *J Cardiovasc Electrophysiol* 2010 Nov;21(11):1208-1216.
- (12) Kirchhof P, Haessler KG, Blank B, De Bono J, Callans D, Elvan A, et al. Apixaban in patients at risk of stroke undergoing atrial fibrillation ablation. *Eur Heart J* 2018 Aug 21;39(32):2942-2955.
- (13) Mehran R, Rao SV, Bhatt DL, Gibson CM, Caixeta A, Eikelboom J, et al. Standardized bleeding definitions for cardiovascular clinical trials: a consensus report from the Bleeding Academic Research Consortium. *Circulation* 2011 Jun 14;123(23):2736-2747.
- (14) Kaiser DW, Fan J, Schmitt S, Than CT, Ullal AJ, Piccini JP, et al. Gender Differences in Clinical Outcomes after Catheter Ablation of Atrial Fibrillation. *JACC Clin Electrophysiol* 2016 Nov;2(6):703-710.
- (15) Piccini JP, Simon DN, Steinberg BA, Thomas L, Allen LA, Fonarow GC, et al. Differences in Clinical and Functional Outcomes of Atrial Fibrillation in Women and Men: Two-Year Results From the ORBIT-AF Registry. *JAMA Cardiol* 2016 Jun 1;1(3):282-291.
- (16) Blomstrom-Lundqvist C, Gizurarson S, Schwieler J, Jensen SM, Bergfeldt L, Kenneback G, et al. Effect of Catheter Ablation vs Antiarrhythmic Medication on Quality of Life in Patients With Atrial Fibrillation: The CAPTAF Randomized Clinical Trial. *JAMA* 2019 Mar 19;321(11):1059-1068.

(17) Mark DB, Anstrom KJ, Sheng S, Piccini JP, Baloch KN, Monahan KH, et al. Effect of Catheter Ablation vs Medical Therapy on Quality of Life Among Patients With Atrial Fibrillation: The CABANA Randomized Clinical Trial. *JAMA* 2019 Apr 2;321(13):1275-1285.

(18) Nishtala A, Piers RJ, Himali JJ, Beiser AS, Davis-Plourde KL, Saczynski JS, et al. Atrial fibrillation and cognitive decline in the Framingham Heart Study. *Heart Rhythm* 2018 Feb;15(2):166-172.

(19) Nakamura T, Okishige K, Kanazawa T, Yamashita M, Kawaguchi N, Kato N, et al. Incidence of silent cerebral infarctions after catheter ablation of atrial fibrillation utilizing the second-generation cryoballoon. *Europace* 2017 Oct 1;19(10):1681-1688.

(20) Haeusler KG, Koch L, Herm J, Kopp UA, Heuschmann PU, Endres M, et al. 3 Tesla MRI-detected brain lesions after pulmonary vein isolation for atrial fibrillation: results of the MACPAF study. *J Cardiovasc Electrophysiol* 2013 Jan;24(1):14-21.