

Cooperation in public goods games predicts behaviour in incentive-matched binary dilemmas

Mullett, Timothy; McDonald, Rebecca; Brown, Gordon

DOI:

[10.1111/ecin.12796](https://doi.org/10.1111/ecin.12796)

License:

Creative Commons: Attribution (CC BY)

Document Version

Publisher's PDF, also known as Version of record

Citation for published version (Harvard):

Mullett, T, McDonald, R & Brown, G 2020, 'Cooperation in public goods games predicts behaviour in incentive-matched binary dilemmas: evidence for stable pro-sociality', *Economic Inquiry*, vol. 58, no. 1, pp. 67-85.
<https://doi.org/10.1111/ecin.12796>

[Link to publication on Research at Birmingham portal](#)

General rights

Unless a licence is specified above, all rights (including copyright and moral rights) in this document are retained by the authors and/or the copyright holders. The express permission of the copyright holder must be obtained for any use of this material other than for purposes permitted by law.

- Users may freely distribute the URL that is used to identify this publication.
- Users may download and/or print one copy of the publication from the University of Birmingham research portal for the purpose of private study or non-commercial research.
- User may use extracts from the document in line with the concept of 'fair dealing' under the Copyright, Designs and Patents Act 1988 (?)
- Users may not further distribute the material nor use it for the purposes of commercial gain.

Where a licence is displayed above, please note the terms and conditions of the licence govern your use of this document.

When citing, please reference the published version.

Take down policy

While the University of Birmingham exercises care and attention in making items available there are rare occasions when an item has been uploaded in error or has been deemed to be commercially or otherwise sensitive.

If you believe that this is the case for this document, please contact UBIRA@lists.bham.ac.uk providing details and we will remove access to the work immediately and investigate.

COOPERATION IN PUBLIC GOODS GAMES PREDICTS BEHAVIOR IN INCENTIVE-MATCHED BINARY DILEMMAS: EVIDENCE FOR STABLE PROSOCIALITY

TIMOTHY L. MULLETT¹, REBECCA L. MCDONALD¹ and GORDON D.A. BROWN*¹

We report the results of an experiment in which subjects completed second mover public goods game tasks and second mover binary social dilemma tasks. Each task was completed under three different incentive structures which were matched across tasks. The use of nonlinear incentive structures, along with a novel categorization method, allowed us to identify behavioral subtypes that cannot be distinguished using conventional linear incentive structures. We also examined how well behavior could be predicted across tasks. Subjects' average conditional cooperation levels showed significant cross-task predictability and stability. However, almost a third of responses (28%) demonstrated unambiguous preference reversals across tasks. We argue that prosociality is best described as an individual-level trait, similar to risk aversion in choice under risk. (JEL C7, C91, H41)

I. INTRODUCTION

A key development in the study of cooperation has been the identification of behavioral subtypes. It has long been possible to categorize individuals as “cooperators” or “defectors” in terms of their performance on simple binary dilemma (BD) games such as the prisoner’s dilemma, where subjects explicitly choose between cooperation and defection within a standard game matrix. More recently, better than binary classification of individuals has been made possible by the use of public goods (PG) games which reveal the responsiveness of an individual’s contributions to the public good as a function of the contributions made by others to the same public good (Fischbacher, Gächter, and Fehr 2001).¹

*This work was supported by the Economic and Social Research Council (ES/K002201/1, ES/N018192/1) and the Leverhulme Trust (RP2012-V-022).

Mullett: Assistant Professor, Warwick Business School, University of Warwick, Coventry, CV4 7AL, UK. University of Bath, Bath, BA2 7AY, UK. Phone +44 (0)24 7652 8960, Fax +44 (0)24 7646 1606, E-mail tim.mullett@wbs.ac.uk

McDonald: Lecturer in Economics, Department of Economics, University of Birmingham, Birmingham, B15 2TT, UK. Phone +44 (0)121 414 6656, Fax +44 (0)121 414 7377, E-mail r.l.mcdonald@bham.ac.uk

Brown: Professor in Behavioural Science, Department of Psychology, University of Warwick, Coventry, CV4 7AL, UK. Phone +44 (0)7818 423560, Fax +44 (0)24 7652 4649, E-mail g.d.a.brown@warwick.ac.uk

1. For reviews, see, for example, Ledyard (1994) and Chaudhuri (2011).

Two key questions are addressed here. The first concerns whether behavioral subtyping based on responses in one task can predict behavior on different tasks (e.g., whether cooperativeness on PG games predicts cooperativeness on BD games). Is “conditional cooperativeness” akin to a personality trait, that is, a stable characteristic of an individual that governs their behavior across a wide range of contexts? Or do individuals apply such different strategies across tasks that it is not possible to use their behavioral subtype in a single task to predict their behavior in other tasks? A behavioral subtyping that does not predict performance across economic games within the laboratory is unlikely to predict behavior outside the laboratory. Furthermore, comparisons between more closely controlled tasks may help to identify why results vary so substantially between different tests of lab to field generalizability (Camerer 2011).

The second question is whether there are additional, or alternative, behavioral subtypes that are only apparent in PG games with nonlinear incentive structures. Prior investigations have largely used the linear PG game. However, this

ABBREVIATIONS

BD: Binary Dilemma
NE: Nash Equilibrium
PG: Public Goods

approach is limited in the number of strategies it can identify because quite differently motivated strategies can produce identical patterns of behavior. Specifically, “free-riders” are defined as individuals who contribute zero to the public pot regardless of the amount being contributed by other players. These individuals are often interpreted as payoff-maximizers, because the dominant strategy for a self-interested individual in the linear PG game is to contribute nothing regardless of others’ contributions.² However, zero contribution could alternatively reflect strategies of noninvestment or nonengagement with the market. Similarly, it is unclear whether conditional cooperators imitate other players or whether they base their decisions on some mix of factors such as equality of contribution, equality of outcome, and total group payout.

To address our two key questions we develop a novel within-subjects methodology in which individuals complete PG and BD tasks with the same three incentive structures being used in both tasks. Prior studies on the cross-task stability of social preferences have led to mixed conclusions. This is particularly true when comparing prosocial behavior in laboratory tasks to behavior in the real world. Some studies find significant correlations (Camerer 2011; Dai, Galeotti, and Villeval 2016; Karlan 2005; Normann, Requate, and Waichman 2014), but others report remarkably robust null effects across a wide range of tasks and measures (Carpenter and Seki 2011; Galizzi and Navarro-Martinez 2019; Stoop, Noussair, and van Soest 2012). In many studies that do report a significant relationship, the correlation is often noticeably smaller than test-retest correlations when an individual completes the same task multiple times. Overall, the results suggest that many unidentified factors affect responses and measured prosociality (Fehr and Leibbrandt 2011; Lamba and Mace 2011).

However, it is not straightforward to identify specific features of study designs that could explain why some studies show an effect while others do not. This is largely because the many differences between the tasks used in the various studies make it impossible to determine the effect of each. Consider, for example, Stoop, Noussair, and van Soest (2012) who compare behavior in cooperation tasks in an abstract lab setting to behavior in comparable field studies

at a recreational fishing pond. These authors find cooperation in the lab, but virtually none in the field, and convincingly demonstrate that this contrast is driven by task differences rather than population differences. However, identifying the mechanism underpinning the task effect is impossible, due to the many differences which could account for (or significantly contribute toward) the difference in cooperation. For example, social considerations (real or perceived) may have been more salient in the field because a subject can more immediately see who else is fishing in the pond, with potential perceived reputational costs. There are likely to be diminishing returns to catching fish, since subjects were required to take their catch home or dispose of it. Importantly for our own design, it is difficult to identify how well the incentives matched across tasks, since the utility of catching a fish is likely to vary substantially between subjects in a way that is not true for the money received in financial tasks. Stoop et al. made an impressive attempt to control for, or address, as many potential differences as possible. However, in this and other field studies, the differences in framing and incentives will be multi-faceted, and all but impossible to define comprehensively.

Although we focused on the example of Stoop, Noussair, and van Soest (2012) similar issues apply more generally across laboratory and field experiments. The potential for real or perceived social pressures and reputational effects will often differ between studies, or between tasks within a study. The immediacy or depth of social interactions will typically be different in computerized tasks compared to physical or verbal interactions in tasks in the field. Even the physical effort required to complete the tasks may differ. Undoubtedly, studies in the field generate insights that are valuable in their specific contexts, but due to the proliferation of differences discussed above, trying to identify the common causes of behavioral patterns will at best be a long and inefficient process. The potential variation in incentives, framing, and subject perceptions are simply too large. To address this, others have used entirely laboratory-based studies. Even in these studies, however, the evidence for cross-task predictability is mixed.

For example, Blanco, Engelmann, and Normann (2011) examined inequity aversion (Fehr and Schmidt 1999) using four different tasks: an ultimatum game, a PG game, a dictator game, and a sequential prisoner’s dilemma game. They found that the majority of players did not behave

2. An additional point contributed to the public pot gives a return less than that from keeping it in the private account, regardless of the other players’ contributions.

consistently across the different games in the way predicted by the inequity aversion model. There were, however, correlations across games—for example, individuals' sequential prisoner's dilemma second mover-decisions were correlated with their offers in the ultimatum game.

In a detailed analysis of the evidence for the inequity aversion model, Binmore and Shaked (2010) concluded that the cross-task predictive power of the model had not been established; that is, it is not clear that parameters estimated from behavior on one task can be used to predict behavior on another (but for discussion, see Binmore and Shaked 2010; Gintis 2010). Even if payoff structures are identical, the level of cooperativeness may differ. For example, a number of studies have found greater cooperativeness in PG games than in common pool resource games,³ despite suggestions that the games are strategically equivalent (Ledyard and Palfrey 1995). In contrast, other studies have found that overall levels of cooperation over repeated games are qualitatively similar when payoffs are equivalent across these tasks (Apestequia and Maier-Rigaud 2006), with results depending on experimental parameters (Kingsley and Liu 2014). However, such studies have not examined the strategies employed by the same subjects in different tasks. This is particularly important due to the strong evidence of large individual differences in cooperation and strong behavioral subgrouping (Fischbacher, Gächter, and Fehr 2001).

Here, we present a strategy that addresses all the issues outlined above. We present a within-subject methodology that maintains the same financial incentive structure across two different lab tasks. This allows us to examine the extent to which cooperation can be generalized across different task frames and incentive structures. By allowing such a high level of control, this paradigm also presents a starting point from which the effect of specific experimental manipulations can be unambiguously measured.

We directly assess cross-task predictability and the effect of incentive structure. Subjects completed an experiment with two sections—a PG section and a BD section, and within these sections completed first and second mover responses. We focus on the second mover responses. For the PG games we adopted the strategy game methodology (“P-game”) used in Fischbacher, Gächter, and Fehr (2001) (see also

Selten 1967). Subjects stated their conditional contribution in response to all possible integer values of the mean of others' contributions (0–20). Subsequently they provided their first mover contribution (as in a “C-game”). The PG section included three versions of the game, each with a different incentive structure. The same three incentive structures were included in the BD section, as well as a fourth incentive structure used to test for violations of dominance. The incentive structures were chosen to correspond to three common BDs: prisoner's dilemma, stag hunt, and hawk-dove. In the PG task this correspondence was achieved by transforming the group summed contributions into the shared payoff from the public good according to either a linear, convex, or concave function (see below for details). The use of quadratic functions (following Isaac and Walker 1988, Keser 1996, Sefton and Steinberg 1996, and others) also allowed us to examine whether there are subtypes of individuals that cannot be identified using only the linear structure. When responding to the BD, subjects answered both as first mover and second mover in all incentive structures. In the second mover case, subjects were told the other player(s) had chosen to cooperate. Our experiment exploits the equivalence between incentives in these second mover choices and in the PG strategy task.

Our principal findings are as follows. First, using a novel categorization method we grouped subjects into three behavioral subtypes in the PG game: 69% of subjects were conditional cooperators, 11% were payoff-maximizers, and 20% were noncontributors. Second, both payoff-maximizers and conditional cooperators were sensitive to the incentive structure of the PG game, although the effect was by definition smaller for those who were categorized as conditional cooperators. Only 9% of subjects exhibited a pure matching strategy (i.e., contributed the same amount as other players, regardless of the incentive structure). We also found evidence for cross-task stability: Cooperativeness in binary social dilemmas was significantly predicted by parameters describing an individual's behavior in the PG games. Furthermore, this predictive accuracy was independent of incentive structure, with predictive power no better within an incentive structure than between. We interpret this as evidence for prosociality as a stable trait that influences responses under all incentive structures. However, subjects also demonstrated variability across tasks. A substantial minority

3. Perhaps because of “warm glow” effects (Andreoni 1995).

of individuals exhibited preference reversals between PG and BD, even when incentive structures were held constant (e.g., an individual cooperated in a BD but contributed little or nothing in the equivalent PG).

The remainder of the paper is structured as follows. In Section I.A, we describe the incentive structures and show how they can be varied in PG games to be made equivalent to the incentive structures of prisoner's dilemma, stag hunt, and hawk-dove games, while also allowing us to distinguish between the different possible strategies being used by noninvestors and by conditional cooperators. The experimental design is described in Section II, and results are reported in Section III. Section IV concludes.

A. Incentive Structures

As set out by Ledyard (1994), any PG game environment can be described as follows. Each agent, $i = 1, \dots, N$ in the group holds an endowment, z^i . The PG is produced from contributions out of this endowment, according to some function $y = g(t)$ where t represents the part of the initial endowments that group members contribute. The rest (x^i) is retained, so that $t = \sum_{i=1}^N (z^i - x^i)$. The group's outcome is then $a = (y, x^1, \dots, x^N)$. Each individual is assumed to derive utility from the PG and from their own private good, according to some function $U^i(y, x^i)$. The total payoff for each participant is typically given by $x^i + \frac{y}{N}$.

Some of these parameters were fixed for this study. $N = 4$ in all PG games, and $z_i = 20$ for all participants in each game. The functional form taken by $g(t)$ is specified as $g(t) = (\alpha t)^\beta$ where α and β are varied to generate the linear, convex, and concave incentives. In the linear form of the PG game, $\beta = 1$ to generate linearity, and $\alpha > 1$ to provide the tension between private and social incentives.⁴ To generate convexity $\beta > 1$; and for concavity, $\beta < 1$.

These incentive structures generate different second mover best-response functions under the assumption of payoff maximization. The payoff function for an individual can be summarized as

$$(1) \quad \pi^i = 20 - t^i + \frac{1}{4} (\alpha (T^J + t^i))^\beta.$$

T^J is the sum of the other three players' contributions. Differentiating Equation (1) with respect

to t^i gives the result that contributing an additional point to the public pot increases one's own payoff as long as

$$(2) \quad 1 < \frac{\alpha\beta}{4} (\alpha (T^J + t^i))^{\beta-1}$$

where $\beta = 1$, the condition in Equation (2) simplifies to contribution whenever $1 < \frac{\alpha}{4}$, a fixed condition that, with $\alpha = 1.4$, is never satisfied. This generates the boundary solution where zero contributions are always the best response to any level of others' contribution.

In the convex case with $\beta > 1$, the benefit from contributing an additional point increases in both T^J and t^i . The more that has been contributed, the more valuable is an additional contribution. Substituting in the numbers used in this study, with $\alpha = 0.07$ and $\beta = 3$, the threshold amount in the pot for which the value of an additional contribution exceeds 1 is 62.35 points.

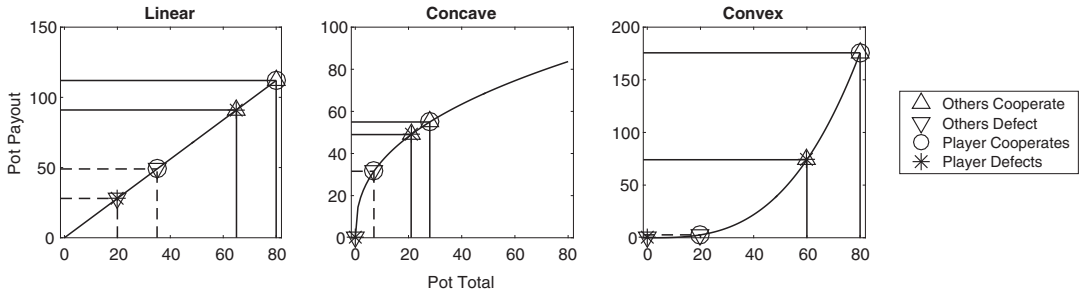
In the concave case with $\beta < 1$, the benefit from contributing an additional point decreases in both T^J and t^i . The more that has been contributed, the less valuable is an additional contribution. The concave case employed in this study uses $\alpha = 800$ and $\beta = 0.4$, and an additional point contributed to the public pot generates additional private return only when the total contributions are zero or 1 (the threshold is 1.85). Therefore, except when others contribute nothing, there is no payoff maximizing incentive to contribute to the PG in the concave case. The workings are provided in Appendix S1, Supporting Information.

So far, the focus has been on the PG incentive structures. But in order to explore the consistency of behavior across contexts, it is necessary to create scenarios that are equivalent in terms of their payoffs, but different in their framing. To do this, we make use of a little-recognized theoretical observation. Specifically, variants of the standard PG and BD tasks can be created such that the payoff structures are equivalent across the two task formats at particular levels of PG contribution (see Kolllock 1998 for a discussion along similar lines). Any strategy that relies solely on the payoffs (of the respondent and/or of the other players) will therefore lead to the same levels of cooperation across task formats.

To understand how the payoff equivalence is constructed, first consider the one-shot linear PG task ("C-game") with a total of four players. In each round, $t^i \in [0, 20]$, so the decision-maker contributes any number of points between 0 and 20, knowing that the average of others' contributions will also be between 0 and

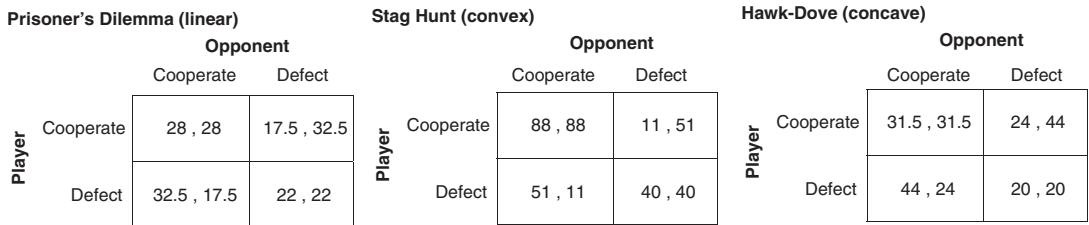
4. That is, while the dominant strategy (and therefore the NE) is to contribute no points to the PG, the Pareto Efficient outcome is for everybody to contribute all 20 points.

FIGURE 1
Three Incentive Structures in Public Goods and Binary Dilemmas



Note: The points marked on the pot payout functions show the possible combinations of cooperation and defection when the PG game is reduced to the binary dilemmas.

FIGURE 2
Payoff Matrices for All Binary Dilemmas with One Other Player



20. Consider instead a case where the decision-maker's choice set is limited to two possible contributions; for example, $t^i \in \{5, 20\}$. If all players face the same restricted choice,⁵ the PG game reduces to a BD between cooperating (by contributing 20) and defecting (by contributing 5). This is illustrated in the leftmost panel of Figure 1.⁶ The points marked on the pot payout functions show the possible combinations of cooperation and defection when the PG game is reduced to the $\{5,20\}$ BD described above. For example, the leftmost highlighted point shows the result of the Player and the Others all defecting, resulting in a pot of 20 and a pot payout of 28. The rightmost highlighted point shows the result of Player and Others all cooperating, with pot size 80 and pot payout 112. The four highlighted payoffs from these cooperate-defect choices form the prisoner's dilemma shown in the leftmost panel of Figure 2 (for a two-player

version) and Figure 3 (for a four-player version). We are not the first to notice this equivalence, which is clearly set out in Hauert and Szabo (2003) and discussed in some detail by Conybeare (1984), but we are the first to use the equivalence to test consistency of behavior within-subjects across task frames.

Similar equivalences can be constructed for stag hunt games and for hawk-dove games. In a PG game where the transformation determining the public good payoff is convex in summed contributions, the benefit from contributing an additional point to the public pot increases in the average of others' contributions. When reduced to a binary choice between cooperation (contribute all) and defection (contribute nothing), the choice is equivalent to the stag hunt dilemma in the middle panel of Figures 2 and 3. This is illustrated in the context of the PG game in the rightmost panel of Figure 1. If the payoff transformation is concave, as in the middle panel of Figure 1, the benefit of contributing an additional point to the public pot declines with the average of others' contributions. This can be reduced to the hawk-dove

5. Section II details how a group would decide.

6. The incentive structures and payoffs shown in this figure are those used in our experiment.

FIGURE 3

Payoff Matrices for Binary Dilemmas with Three Other Players

Prisoner's Dilemma (linear)			Stag Hunt (convex)			Hawk-Dove (concave)		
Player	Opponent		Player	Opponent		Player	Opponent	
	Cooperate	Defect		Cooperate	Defect		Cooperate	Defect
	Cooperate	28 , 28		12.25 , 27.5	Cooperate		44 , 44	1 , 21
Defect	37.75 , 22.75	22 , 22	Defect	28.5 , 18.5	20 , 20	Defect	32 , 25	20 , 20

TABLE 1

The Proportion of Subjects Choosing to Defect in Each Binary Dilemma, as First and Second Mover

	Facing One Other		Facing Three Others	
	First Mover (%)	Second Mover (%)	First Mover (%)	Second Mover (%)
Linear	66	54	74	63
Concave	54	64	62	67
Convex	45	10	55	14

BD shown in the rightmost panel of Figures 2 and 3, where the best response is to defect when the other player(s) cooperate, but cooperate when the other(s) defect.

One difference between the PG game and the classic BD games is the number of other players. In the BD the decision-maker typically faces just one other player instead of three others. To account for this, our design features two- and four-player versions of the BDs. Tables 1 and 2 give the payoffs for the two- and four-player BD games, respectively.

The Nash equilibria for the BDs with two players are as follows. The prisoner's dilemma has a single Nash equilibrium (NE) of {D,D} despite the efficient outcome being {C,C}. This captures the private-social tradeoff and reflects the structure of the linear PG game. The hawk-dove has two pure strategies NE, {C,D} and {D,C}. That is, one should defect if the other cooperates and vice versa. This logic is reflected in the concave PG game. There also exist two pure strategies NE for the stag hunt, {C,C} and {D,D}, reflecting the increasing returns to contributions in the convex incentive structure of the PG game.

Turning to the four-player versions, the structure is that a single player is facing a group of three others who will vote on their preferred

outcome. The NE are equivalent to those for two players for the concave and convex versions. However, it is not possible to select values in the prisoner's dilemma (linear case) with three other players that produce the incompatibility between payoff maximization and socially optimal outcomes, since the requirement that the other players divide the payoff by three precludes this. Therefore the NE for the four-player version of the prisoner's dilemma is {D,C}. The "group of others" has a dominant strategy to cooperate regardless of the single player's behavior. While this clearly changes expectations about others' behavior, relevant for the first mover choice, it does not change the fact that the single player's own dominant strategy is to defect. In our experiment we exploit the equivalence between second mover BD tasks and "second mover" responses elicited through the strategy version of the PG game.

II. METHODS

A. Overview

The experiment was divided into two sections: a PG section (including both P- and C-games) and a BD section. Each section included sets of questions implementing the three different incentive structures introduced above. Subjects answered all questions in both sections. The order of the sections and of the question sets within each section were randomized for each subject.

B. PG Game

The PG section included three sets of questions. In each set we implemented one of the three incentive structures outlined above. Subjects were informed that they were part of a group of four players. Each player was endowed with 20

TABLE 2
Proportion of Subjects Choosing to Defect in Each Binary Dilemma

	Linear		Concave		Convex	
	First Mover (%)	Second Mover (%)	First Mover (%)	Second Mover (%)	First Mover (%)	Second Mover (%)
Facing one other						
Conditional	65	51	53	58	44	8
Free-rider	85	85	77	85	62	15
Other	50	60	30	90	40	20
Facing three others						
Conditional	72	58	61	62	56	12
Free-rider	92	100	77	92	62	15
Other	80	70	70	90	50	30

Note: Subjects are categorized by the traditional Fischbacher, Gächter, and Quercia (2012) method.

points and they allocated as many of them as they wished to the public pot.⁷ Points in the public pot were transformed into the “pot payout” according to the formula in Equation (1). The pot payout was shared equally between the four group members. Each individual’s payoff was therefore the total of the points they did not contribute and their share of the pot payout. The payoff for player i is summarized in Equation (3), where π^i is the payoff for player i given a contribution of t^i , N is the total number of players, and total contributions are $\sum_{i=1}^N t^i$.

$$(3) \quad \pi^i = z^i - t^i + \frac{1}{N} \left(\alpha \sum_{i=1}^N t^i \right)^\beta.$$

As described previously, the pot payout was a linear, concave, or convex transformation of summed contributions as determined by the parameters α and β . In the linear case $\alpha = 1.4$ and $\beta = 1$; in the convex case $\alpha = 0.07$ and $\beta = 3$; and in the concave case $\alpha = 800$ and $\beta = 0.4$.⁸

To communicate the incentive structures in an intuitive way we developed an interactive computer interface in which the relationship between the groups’ contributions to the pot and the pot payout was plotted graphically, as shown in Figure 4. The subject could use a slider to change the level of summed contributions to the pot, and the program reported the corresponding pot payout, as well as the respondent’s own share of the pot payout. The amounts updated in real time as the slider was moved along. We

ensured that respondents familiarized themselves with the slider by requiring them to fill in worked examples for each of the three incentive structures. We measured whether subjects understood the task by requiring them to answer a number of example questions before progressing to the main task.

Next, subjects completed three sets of questions (one for each incentive structure). Each set included a P-game (Fischbacher, Gächter, and Quercia 2012), in which subjects were asked how many points they would contribute if they knew that the other players were going to contribute an average of X points. Responses were elicited for all possible integer values of X (0-20). These form the “second mover” responses used for the main analyses. Subjects then completed a C-game, reporting how many points they would contribute if they did not know how many the other players were going to contribute. Finally (following, e.g., Fischbacher, Gächter, and Quercia 2012), subjects were asked what they expected the other player(s)’ average first mover contribution to be.

C. Binary Games

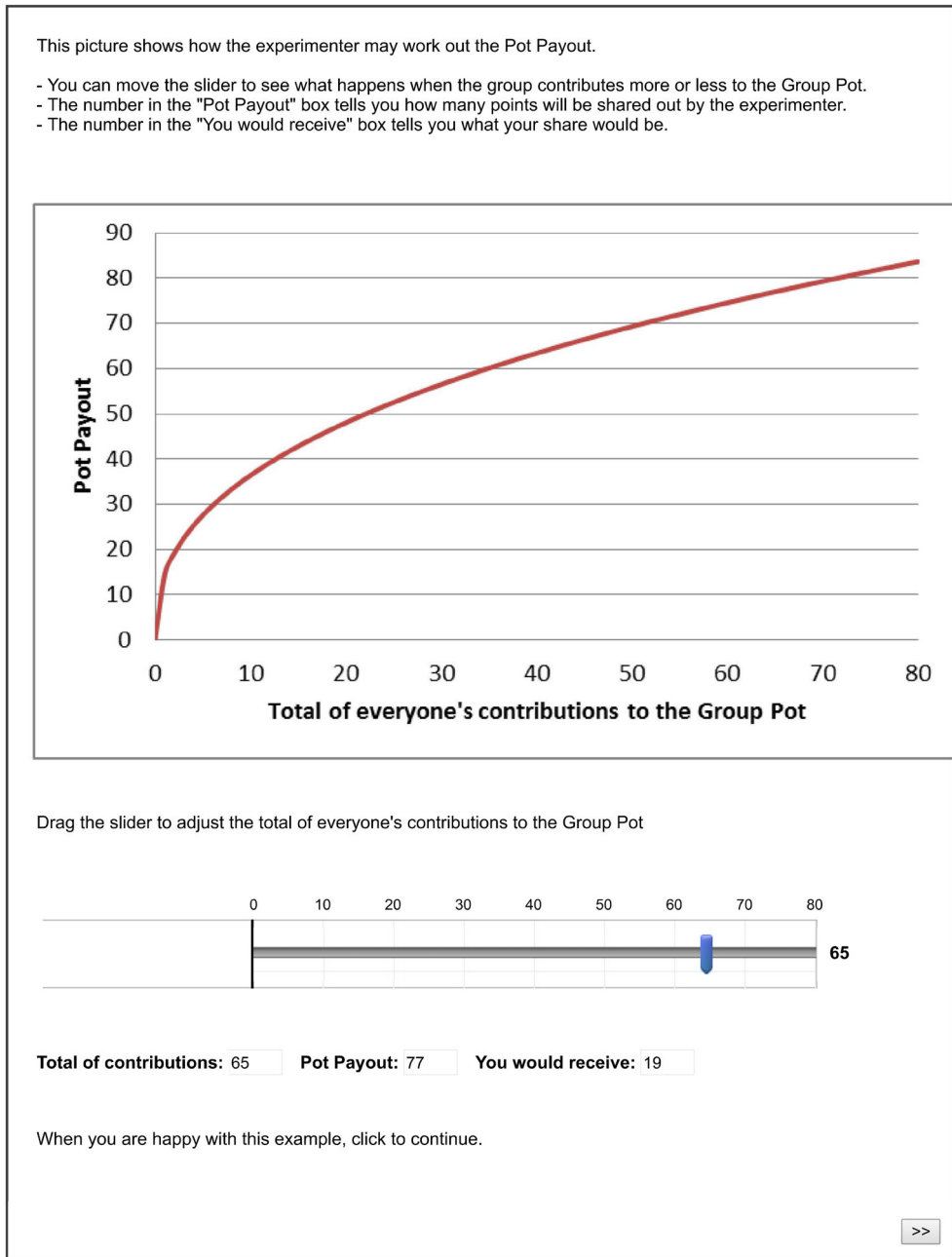
The binary games were based on four incentive structures: the three structures outlined above plus an incentive structure with transparent dominance and no conflict between individual and collective welfare. The latter was included as a check that respondents were paying attention and understood the task. For each of the four incentive structures subjects provided first mover responses against one other person (Figure 2), first mover responses against three other people (Figure 3), second mover responses against one other person and second mover responses against three other

7. Points were converted to GBP at a rate of 20 points to £1.00, for the question selected to be played out.

8. These parameters were chosen to produce the same incentive structure in the PG and BD tasks as outlined above (Figure 1).

FIGURE 4

An Example of the Experiment Interface for the PG Task with the Concave Incentive Structure Plotted Graphically



Note: Moving the slider would update the numerical values displayed underneath in real time.

people. When playing against three others, subjects were told that the three other people would all independently choose their favored response and that the majority choice would be played.

The dilemmas were presented in a grid, with different colors used to represent the payoffs for self and other(s). This presentation was supplemented by a written description of what the payoffs to the respondent and to the other player(s) would be for all four potential outcomes in that dilemma. There were two information screens: one for the choices where the subject faced one other player and one for the choices where the subject faced three other players. After each information screen, the subject made their choices (as first and second mover under each of the four incentive structures⁹). For the first mover choice, the subject chose between Top (cooperate) and Bottom (defect). The second mover choice was also presented as a decision between Top and Bottom, but this time in the knowledge that the other player(s) would choose Left. To make this clear, the irrelevant column of the table was covered with a translucent gray overlay (Figure 5). The order of blocks (1 other then 3 other or vice versa) was randomized between subjects, and the order of the four incentive structures within each of these blocks was also randomized. Each first mover question was always immediately followed by the relevant second mover question.

The task was incentivized by informing players that one question would be selected at random for each individual. This could be any of the choices from the first or second mover responses from either the PG or the BD tasks. If a PG task was selected, three other subjects were chosen at random to provide the “others” responses. If the subject’s role was as first mover, then their unconditional estimate was averaged with those of two others to generate the average contribution which was then rounded. The fourth player’s conditional contribution was used to complete the public pot. If their role in the PG task was second mover, the (rounded) average of the other three players’ unconditional contributions was used, and the subject’s relevant conditional cooperation amount was used to complete the public pot.

9. Although we refer to the choices as first and second mover, this does not imply that the choices were all sequential, with one person always choosing first then the second choosing based upon their response. These terms were never used in the task instructions or procedure. Subjects were told the two cases represented situations where no players knew what the other(s) would choose, and times where they already knew what the other player(s) would do.

FIGURE 5
Binary Choice as Displayed to Subjects
(Example, Second Mover), with “Your Points”
Displayed Using Green, and “Their Points”
Displayed Using Blue

Your Points Their Points	Other Chooses	
	Left	Right
You Choose Top	5 5	6 9
You Choose Bottom	8 8	10 1

Note: This example is from the information screen and these specific payoffs were not used in any of the real tasks.

If a BD task was selected with one other player and the role of second mover was selected there was no need to use the responses of any other player, and the subject simply received the relevant payout. If in this task, the role of first mover was selected, then another subject was chosen at random and their first mover response was used as the other player choice. If a BD task was selected with three other players, then this could not be properly incentivized using subjects from within this task, as none completed a voting task (which forms the responses of the others in the three other condition). Therefore, an auxiliary study was conducted where subjects were told they were one of three individuals voting for the BD choice.¹⁰ Three subjects from this auxiliary task were selected to provide the votes in the BD with three others.

The experiments were programmed online using Qualtrics, and JavaScript was used for the interactive displays. All 117 subjects in the main experiment, and the additional 11 subjects filling the role of the “others” in the BD section, were recruited through Prolific Academic and completed the experiment over the internet. Ethical approval was granted by the University of Warwick Humanities & Social Sciences Research Ethics Committee. Subjects in the main experiment received a fee of £6 for participating in addition to earnings based on their choices in the

10. A total of 11 new subjects were recruited from the same prolific academic subject pool as the main study. These subjects were told that at the end of the study a random number between 1 and 10 would be selected. If the number was 10 then one of the questions would be picked and played for real. No subject got a number of 10.

experiment. Points were converted into money at a rate of 5 pence (0.05 GBP) per point, and subjects' choice-dependent earnings ranged from £0 to £4.50. Payment amounts were calculated and paid as soon as all data collection was complete. The mean earnings were £7.46 in total. Subjects in the short auxiliary experiment were paid £1.50 for participating in addition to having a 1 in 10 chance of receiving a reward based on their choices.

III. RESULTS

A. Exclusions

We report the full results here using responses from all subjects who provided a response for every question (as a result, only three subjects were excluded). There are of course many reasonable criteria upon which one could exclude subjects from the analysis. We take a default approach of reporting analyses using the full set to ensure maximum openness and prevent any danger of selective exclusions driving significant results or of particular criteria potentially excluding subjects employing unusual strategies. However, for all of the reported analyses a parallel analysis has been performed upon a subset of subjects selected using deliberately conservative inclusion criteria. An individual was excluded from this subset if they chose the dominated option in any of the four BDs with the transparent dominance incentive structure, or if they began the main experiment without having answered all practice questions correctly. This resulted in 37 subjects being excluded. The qualitative result remains the same in all analyses, and quantitative differences are also small (e.g., 26% overall preference reversal, as opposed to 28% in the full sample).

B. Categorizing Individuals by “Traditional Types” in the PG Game

We begin by replicating Fischbacher, Gächter, and Quercia's (2012) categorization, which we will refer to as the “traditional type” categorization. This method relies solely upon responses in the PG game with a linear incentive structure. Individuals are categorized as free-riders if they contribute zero regardless of the average contribution of others (13 subjects, 11%). They are categorized as conditional cooperators if their contributions rise monotonically with others' contributions, or if there is a significant positive

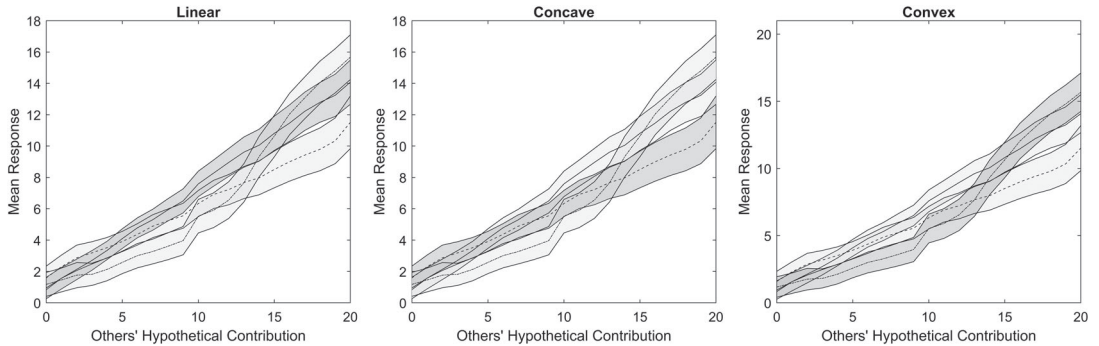
correlation between their contributions and the contributions of others (89 subjects, 78%). They are categorized as “triangle responders” if the maximum amount they contributed is not given in response to the maximum contributions by the other players and either (a) subjects' contributions rise monotonically toward their maximum contribution and decline monotonically after that or (b) there is a significant positive correlation between their contributions and those of the other players up to the maximum point and a negative correlation thereafter (10 subjects, 9%). All others are categorized as “other” (two subjects, 2%). These proportions are similar to those found in previous studies. Due to the low number of triangle and other responders, we follow the approach of several previous papers by combining them.

C. Responsiveness to Incentive Structures

We next test whether behavior differed between the incentive structures. To provide a summary view, the mean contribution and the 95% confidence intervals were calculated for each level of “others' contribution” for each incentive structure in the P-game. The results are plotted in Figure 6 which shows that, although all three patterns approximate conditional contribution, there are significant differences between the incentive structures. When “others' contributions” are low, subjects generally contribute less in the convex condition than in the concave condition. When “others' contributions” are high, subjects contribute more in the convex than in the concave incentive structure. These differences are in the direction of payoff maximization, indicating that subjects understood the incentive structures. In fact, despite the largest group being “conditional co-operators” only nine subjects (8%) exhibited pure contribution matching across all incentive structures, while only five subjects (4%) exhibited pure noninvestment. The majority of subjects (all but 14) changed their behavior in response to the incentive structure.

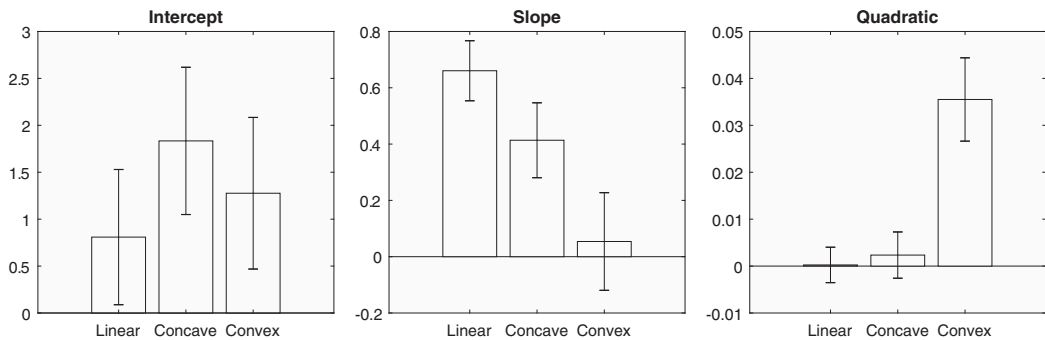
To quantify behavior within each incentive structure, polynomial fits were estimated for each individual's set of 21 responses under each incentive structure. Second-order polynomial fits were estimated. The mean coefficients and 95% confidence intervals are shown in Figure 7. The confidence intervals show that there are clear differences between incentive structures. The quadratic component is largest for responses in the convex condition, whereas the linear slope

FIGURE 6
Levels of Contribution in the PG Game under Each Incentive Structure



Note: The shaded area represents 95% confidence intervals around the mean.

FIGURE 7
Parameters of the Model Fits for PG Game Responses, by Incentive Structure, Pooling All Respondents, with 95% Confidence Intervals



component is largest for the linear structure, and smallest for the convex.

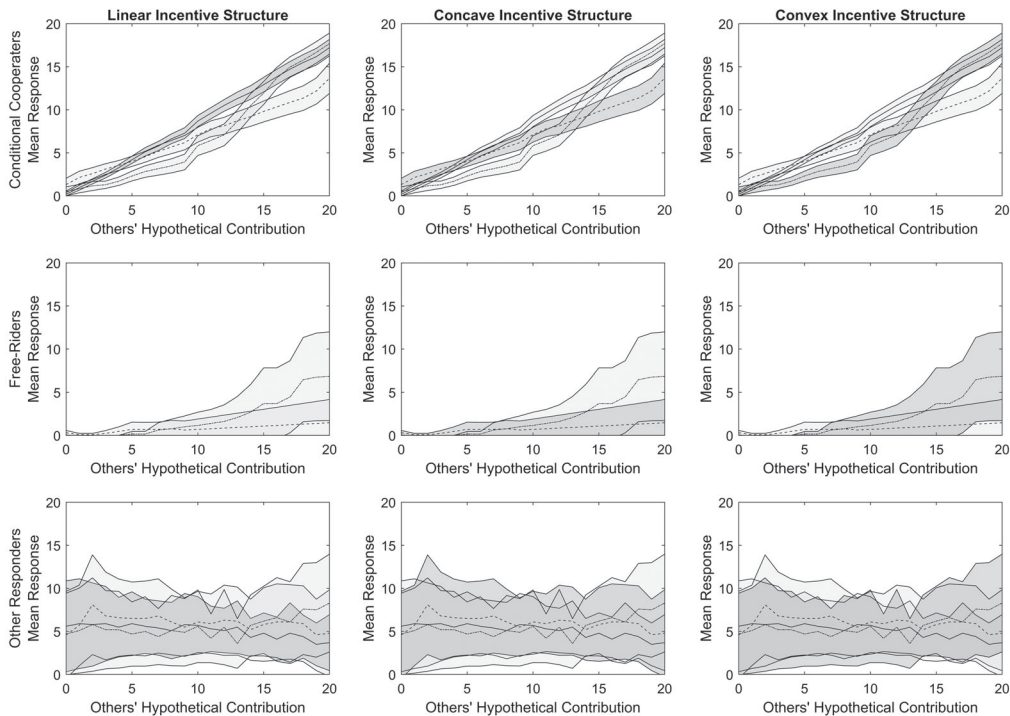
D. PG Responses by Subtypes

To examine how conditional cooperators, free-riders, and triangle/other responders behaved under each incentive structure, the mean contributions and confidence intervals were plotted separately for each subtype. Figure 8 shows clear differences between the categories. The leftmost panel shows that, despite their categorization (a strict interpretation of which would suggest they will simply match or respond to the contributions of others regardless of associated outcomes) conditional cooperators actually moderate their behavior according to the incentive structure.

The middle panel illustrates a limitation of the traditional classification. Free-riders were so classified because they contributed nothing in the linear incentive structure. However, clearly they do not all exhibit this behavior in the convex or concave incentive structures. Consider, for example, the convex structure. Inclusion of this structure allows us to distinguish between behavioral subtypes that respond identically in the linear case. Specifically, a noninvestor and a payoff maximizer would both contribute 0 (i.e., free ride in the linear condition). In the convex structure, however, a payoff maximizer would contribute 20, while a noninvestor would contribute 0 in response to the maximum possible contribution of others. The large confidence intervals around the mean in the middle row panels hide an underlying bimodal distribution.

FIGURE 8

Levels of Contribution in the PG Game in Different Incentive Conditions with Subjects Categorized by the Traditional Fischbacher, Gächter, and Quercia (2012) Methods



Note: The shaded areas represent 95% confidence intervals around the mean.

We, therefore, develop an alternative categorization technique based on responses across all incentive structures. The three categories are conditional cooperator, payoff maximizer, and noninvestor. We first create the profile of a hypothetical exemplar responder for each type. The exemplar conditional cooperator always matches the contributions of the “other players,” the exemplar payoff maximizer always makes the contribution that maximizes their own payoff, and the exemplar noninvestor always contributes zero. Subjects are categorized as the subtype whose exemplar they most closely resemble (resemblance is quantified in terms of summed squared distance between subjects’ and exemplars’ responses). As with the traditional classification method the majority of subjects were classified as conditional cooperators (79 subjects, 69%). However, our novel exemplar-based technique allowed us to classify the remaining subjects as either payoff-maximizers (12 subjects, 11%) or noninvestors (23 subjects, 20%). This

classification could not be achieved using the standard linear PG game. Figure 9 shows that the contribution patterns of these groups match the description of their behavior and strategy.

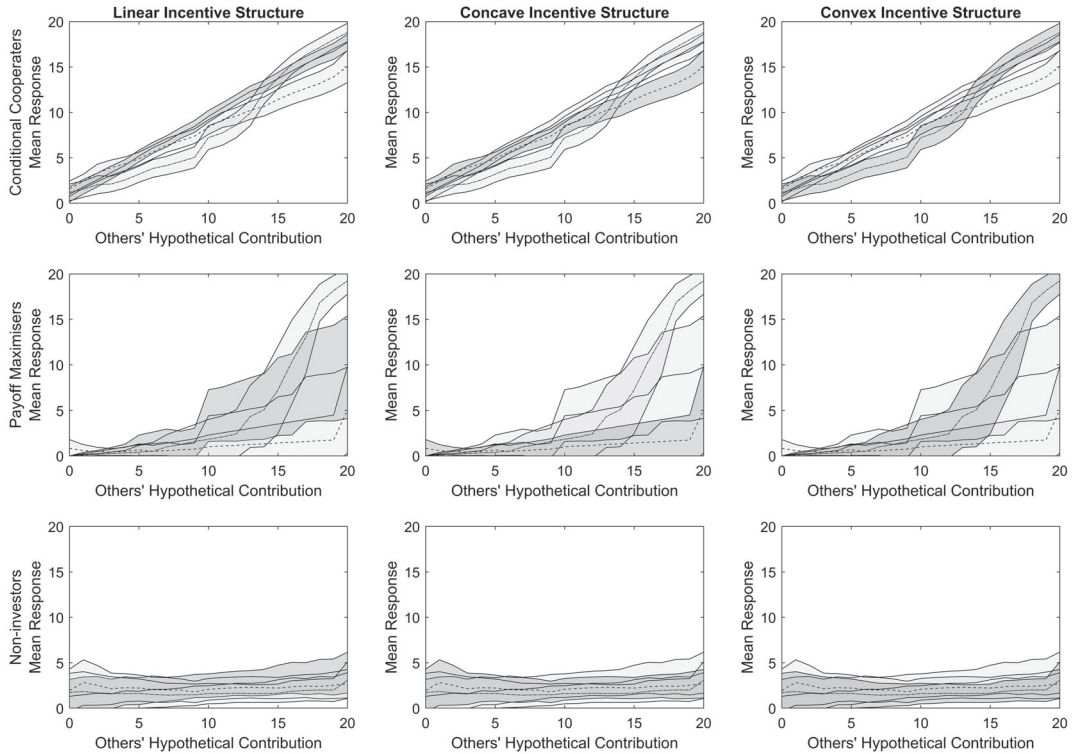
E. BDs: Variability

Next we turn to BDs. Table 1 gives the proportion of subjects defecting in each BD. Much heterogeneity is evident between subjects, with most defection rates between 45% and 74%. The exceptions are the second mover choices in the stag hunt (convex structure). The very high levels of cooperation occur because once the subject knows that others will cooperate, cooperation option dominates defection¹¹ (here

11. Note that the detected rate of defection in the second mover convex BD is the one result that shows a meaningful difference between the full and restricted sample. After excluding subjects for failure to answer attention check BDs and failing to complete understanding questions, the rates of defection fall to 1% when facing one other and 1% when facing three others.

FIGURE 9

Levels of Contribution in the PG Game in Different Incentive Conditions with Subjects Categorized by the Novel Exemplar Matching Method



Note: The shaded areas represent 95% confidence intervals around the mean.

we define dominating as both own and others' payoffs being higher). When comparing defection rates in first and second mover choices, there is a tendency for decreased defection rates in the prisoner's dilemma (linear structure) when acting as the second mover. In the hawk-dove game (concave structure), there is a slight tendency to increase defection, but these changes are small. For full statistical analysis see Appendix S2.

F. BDs and Responder Types

The overall levels of defection and cooperation may mask more homogenous patterns of behavior within groups of responders. Therefore, defection rates are shown separately for each responder subtype; first by traditional types in Table 2 and then by our exemplar based types in Table 3. If individuals' strategies are stable across tasks, then there should be less heterogeneity within subtypes than in the sample overall.

For specific subtypes there are clear predictions. For example, one would expect all free-riders and payoff maximizers to defect in all prisoner's dilemmas, and one would expect all conditional cooperators to cooperate in all second mover prisoner's dilemmas. Table 2 shows that patterns of defection rates generally match these intuitive predictions given the subtypes defined: Conditional cooperators appear generally less likely to defect than other individuals, and free-riders are generally most likely to defect. However, the effect of responder type is far from deterministic: The largest difference between types within any single question is a 48 percentage point difference in defection rates. This is the difference between the conditional cooperators and the payoff maximizers (as defined by our exemplar method) when making second mover choices in the prisoner's dilemma.

Performing statistical analyses upon defection rates is difficult due to the small number

TABLE 3
Proportion of Subjects Choosing to Defect in Each Binary Dilemma

	Linear		Concave		Convex	
	First Mover (%)	Second Mover (%)	First Mover (%)	Second Mover (%)	First Mover (%)	Second Mover (%)
Facing 1 other						
Conditional	62	44	49	58	43	8
Payoff maximizers	83	92	67	92	42	8
Noninvestors	70	70	61	70	52	17
Facing three others						
Conditional	71	57	59	62	53	14
Payoff maximizers	83	83	75	83	67	8
Noninvestors	78	74	65	74	57	17

Note: Subjects are categorized by the novel exemplar matching method.

of subjects in some groups (e.g., free-riders and other) and the lack of variation in convex choices (with almost all subjects cooperating when acting as second mover). Logistic regressions were performed for each combination of first/second mover and number of other players, separately for the traditional types and exemplar types. Full results are presented in Appendix S2 but, to summarize, the only comparison showing any significant main effect of responder type is when subjects were acting as the second mover against one other player. The traditionally defined free-riders, and the exemplar-defined payoff maximizers and noninvestors were all more likely to defect than the corresponding conditional cooperators. However, comparing the log-likelihoods of different models demonstrates that the exemplar method is more accurate at predicting second mover responses.

G. Preference Reversals

To provide a more robust test of cross-task consistency, each individual's responses in one task were compared to their responses in the equivalent incentive structure of the other task to identify preference reversals. To demonstrate how preference reversals are identified, take the linear structure as an example. The choice to defect in the BD is equivalent to contributing 5 in the PG. The choice to cooperate in the BD is equivalent to contributing 20 in the PG. Therefore, anyone who cooperates in the BD, and then contributes 5 in the PG exhibits an unambiguous reversal of preference. This is also true for anyone who cooperates and then contributes less than 5. For individuals who defect in the BD, a contribution of 20 in the PG indicates an unambiguous preference reversal. Since we are

interested in cases of unambiguous reversals, we restrict our analysis to subjects who contribute an amount in the PG equal to or greater than the amount equivalent to cooperating in the BD, and those who contribute an amount in the PG equal to or smaller than the amount equivalent to defecting in the BD.

Table 4 shows in parentheses the total number of the 114 subjects who contributed an amount greater than or less than these values, and the associated percentage indicates the proportion of those subjects who indicated the reverse preference in their BD choice. Looking across all subjects regardless of whether their level of PG contribution would make it possible to unambiguously identify preference reversals, we find that in the second mover condition with three others, 30.7% of all subjects unambiguously reversed their preference in the linear condition, 36.8% did so in the concave condition, and 15.8% in the convex condition.

H. Predictions across Tasks Using Continuous Measures

Despite the significant proportion of preference reversals, it remains possible that there is a link between behavior in the two tasks. This link is clearly not deterministic, and not well described by a subject's categorization, but an individual who exhibits "cooperative" response patterns in the PG game may be more likely to cooperate in the BDs. To examine this, we return to the individual-level polynomial regressions outlined earlier and use the estimated coefficients from the regressions upon behavior in the PG game (see Section III.C). A further, logistic regression was used to predict BD choices using these (z -scored) estimates of curve, slope, and

TABLE 4

Number of Subjects (in parentheses) Who in the PG Game Contributed at Least the Amount Equivalent to Cooperating in the BD, and Who Contributed an Amount No More than that Equivalent to Defecting in the BD

	First Mover		Second Mover	
	Cooperation Given <Min Contribution	Defection Given >Max Contribution	Cooperation Given <Min Contribution	Defection Given >Max Contribution
One other				
Linear	29% (24)	58% (60)	21% (24)	47% (60)
Concave	48% (27)	53% (53)	22% (27)	53% (53)
Convex	46% (13)	44% (77)	77% (13)	6% (77)
Three others				
Linear	21% (24)	68% (60)	13% (24)	53% (60)
Concave	37% (27)	62% (53)	30% (27)	64% (53)
Convex	38% (13)	55% (77)	85% (13)	9% (77)

Note: The associated percentages indicate the proportion of those subjects who exhibited the reverse preference in their BD choice.

intercept as independent variables. All incentive structures were included in the one model on separate rows, for example, the polynomial coefficients estimated from a subject's responses in the linear PG game were used to predict the likelihood that they would defect in the linear BD games, and those from the concave PG game were used to predict responses from the concave BD games etc.

The model intercept is -0.13 (CI = $[-0.25, 0.10]$, $p = .258$). The strongest predictor is the polynomial intercept term ($\beta = -1.33$, CI = $[-1.79, -0.87]$, $p < .001$), with smaller significant results for the polynomial linear term ($\beta = -.74$, CI = $[-1.20, -0.27]$, $p = .002$) and the polynomial quadratic term ($\beta = -.39$, CI = $[-0.68, -0.10]$, $p = .009$). All three coefficients are negative indicating that higher intercept, steeper slope, and greater curvature in an individual's PG response profile predict lower probability of defecting in BDs. The model overall shows that the polynomial coefficients are significantly predictive, with a McFadden's R -square of .102.

A similar analysis can be performed on the first mover responses. In the PG game, each first mover response is an integer between 0 and 20. This was entered into a logistic regression (along with an intercept term) to predict whether the individual then defected in the corresponding first mover choice in the BD game. The intercept term is larger than zero ($\beta = .57$, CI = $[0.35, 0.79]$, $p < .001$) indicating high baseline levels of defection. There is also a significant effect of PG first mover contribution in the predicted direction ($\beta = -.37$, CI = $[-0.61, -0.14]$, $p = .002$),

meaning that if subjects contribute more in the PG then they are less likely to defect in the BD. However, the overall accuracy of predictions (McFadden's R -square of .025) is not as good as in the case of the second mover responses. This is likely due to subjects displaying caution due to uncertainty about other players' contribution levels, and the additional variability caused by different subjects making different assumptions about the other players' likely contribution levels.

1. Generalized Individual-Level Traits or Structure-Specific Strategies?

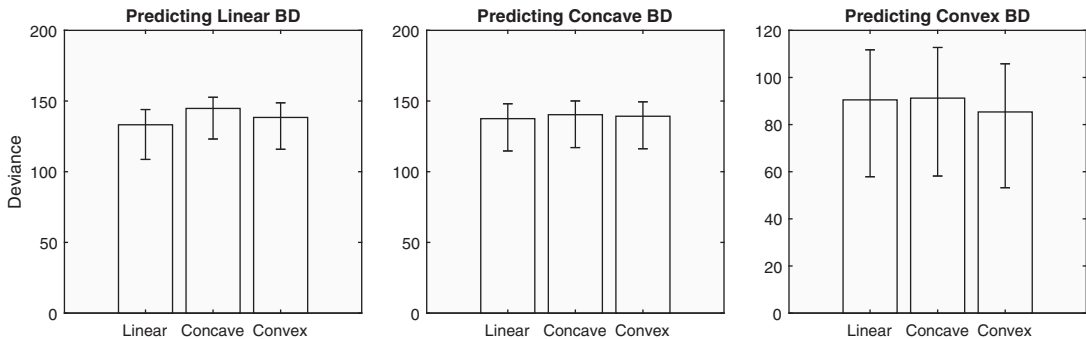
Finally, we ask whether individuals can be described as having an underlying propensity to cooperate in all situations. Such a tendency would be akin to a personality trait, which could be labeled "pro-sociality." If so, cross-task predictability should be as good across as within incentive structures. The alternative possibility is that individuals' cooperativeness is specific to incentive structures. If this is so, individuals' rates of cooperation will show greater cross-task predictability when the incentive structures are identical.

For this analysis, we return to the individual-level polynomial regressions outlined earlier and use the estimated coefficients from the regressions upon behavior in the PG game. To examine whether strategies are specific to incentive structures, a logistic regression was used to predict BD choices using these estimates of curve, slope, and intercept.

Specifically, we examined whether an individual's cooperation in the BDs under one incentive

FIGURE 10

Deviance Estimates for Each Model with 95% Confidence Intervals, Demonstrating no Improvement in Prediction within than between Incentive Structures



Note: The asymmetrical confidence intervals are a natural result of the bootstrap estimation method. For some models there is a negative skew in the deviance of the bootstrap samples.

structure is better predicted by the estimated parameters obtained from their responses in the PG game within that incentive structure than by the parameters obtained from the PG games with the other incentive structures. Therefore, nine separate regression models were estimated—one for every pairwise combination of PG incentive structure and BD incentive structure. The deviance (a goodness of fit measure) was then used to assess the predictive accuracy of each of the nine models. To provide confidence intervals, a bootstrapping approach was used. For each regression, 10,000 bootstrap samples were randomly selected with replacement from the subjects in our data set. Figure 10 shows the deviance estimates for each model and the confidence intervals around them. The deviance is very similar regardless of the incentive structure used to estimate the PG parameters, and the confidence intervals overlap substantially. Thus there is no evidence of any advantage to using incentive structure-specific estimates of cooperativeness, consistent with the idea that prosociality is a trait.

IV. DISCUSSION

The viability of predicting behavior in laboratory social dilemmas from behavior on other laboratory tasks has not been well established, despite a number of investigations (Apesteguia and Maier-Rigaud 2006; Binmore and Shaked 2010; Blanco, Engelmann, and Normann 2011; Camerer 2011; Galizzi and Navarro-Martinez 2019; Kingsley and Liu 2014). If such a link

cannot be established, claims that results in the laboratory can inform us about behavior in decision contexts outside the laboratory where the stakes, framing, and incentives all differ are premature. The results presented here established just such cross-task predictability, but also note its limitations. More specifically, we find that contribution levels in PG tasks predict choices in BD tasks, but that there is significant stochasticity and that even strictly defined responder types do not deterministically predict responses in different tasks, even when the incentives are identical.

We obtained our results from what is, to our knowledge, the first experiment that compares behavior within subjects across PG games and binary social dilemmas with identical financial incentives. Our novel paradigm allowed us to test the validity and generalizability of laboratory social dilemmas more strictly than has been previously possible, since all normatively relevant aspects of the decisions can be held constant. We addressed two key questions. First we asked what strategies were employed in the PG game when incentive structures were modified, including whether the traditionally identified categories of individuals could also characterize behavior in nonlinear incentive structures. Second we asked whether behavior in the PG games predicts behavior in BDs, and whether this predictive ability is specific to particular incentive structures or if strategies predict behavior across incentive structures as well as across tasks.

We applied the traditional categorization of individuals according to their behavior in the PG

game with a standard, linear incentive structure (Fischbacher, Gächter, and Quercia 2012), and found proportions of conditional cooperators, free-riders, and other responders that were in keeping with the existing literature. However, the standard categorization based on the linear PG game confounds own-payoff maximization and a simple strategy of noninvestment, since these produce indistinguishable behavior (i.e., noncontribution at all levels). By introducing different incentive structures and categorizing individuals by their fit with “exemplar” subtypes, we were able to distinguish payoff maximization and noninvestment. We find that many individuals who are traditionally categorized as free-riders can more accurately be described as either payoff maximizers or noncontributors. This alternative categorization better captures the contributions in the nonlinear incentive structures, suggesting that the traditional categorization method cannot be extended beyond the linear PG task.

Both the noncontributors and the payoff maximizers were sensitive to changes in the incentive structure, with their aggregate behavior adapting to changing incentives in the direction that would improve their own payoff. This behavior is an important departure from that predicted by a strict interpretation of conditional cooperation, according to which individuals match the contributions of others. Instead, this result suggests that their responses reflect a compromise between prosocial preferences for contribution or outcome equality, and payoff maximization. We see little evidence that the behavior of these individuals is the result of simple imitation strategies, with only 9% of subjects always matching the contributions of the other players.

Next we turn to the question of cross-task predictability. Subjects responded to a set of BDs as first and second mover in addition to the PG game. These BDs were designed such that the financial incentive structures matched those of the PG games at the levels of contribution equivalent to defect and cooperate choices. This property is crucial as it allows the direct assessment of cross-task consistency while the incentive structure is held constant.

We found a significant relationship between an individual’s likelihood of cooperating in the PG game and their BD choices. This relationship was weak when using PG game categorization to predict BD choices, with only one analysis showing a statistically significant increase in defection for payoff maximizers. However, by using the continuous nature of PG responses to make more

fine-grained probabilistic predictions of BD choices, accuracy was dramatically increased and the relationship was significant across tasks.

A further question was whether cross-task consistency only occurs when incentive structures are identical. If individuals applied qualitatively different strategies under different incentive structures then it might be possible to predict BD choices from PG contributions when incentive structures match (e.g., linear from linear), and yet not possible to predict BD choices from PG contributions when incentive structures differ (e.g., linear from convex). An alternative possibility is that cross-task prediction is possible but is not sensitive to incentive structure. Such a result would be consistent with the existence of an individual-level trait, such as prosociality or other-regarding preference that influences behavior in all tasks and incentive structures. The results favor the latter possibility.

Overall, there is a significant relationship between responses in the PG and BD tasks. However, this link is far from deterministic. When the rates of cooperation in the BDs were calculated separately for different PG responder types, the differences in choice proportions were in line with the intuitive expectations, but there was still much heterogeneity within responder types. If subgroups were applying a particular strategy consistently then one would expect individuals of the same type to display the same behavior. To illustrate, define “high agreement” as occurring when at least 90% of individuals within a group respond in the same way on a given choice. This level of agreement was found in only 14% of cases¹² (excluding questions involving dominance) when subjects were classified by our exemplar method, and in 17% of cases when subjects were classified using the traditional method (see Tables 2 and 3). Furthermore, in 28% of cases, individuals exhibited unambiguous preference reversals between tasks—either by cooperating in the BD and contributing less than the defect amount in the PG game, or by defecting in the BD and contributing more than the cooperate amount in the PG game. Preference reversals in the former direction are substantially more common than in the latter.

In summary we have two findings that appear hard to reconcile: There is significant cross-task predictive power, but there is also significant within-group heterogeneity with

12. A “case” here refers to a subgroup-question combination as defined in the cells of Tables 2 and 3.

even unambiguous preference reversals being relatively common. However, when considered as a whole, these results support the hypothesis that individuals have stable prosociality traits that influence their propensity to cooperate, while at the same time their strategies can also vary between tasks. Such variation could reflect framing and other structural differences. A stable trait such as this would act as a parameter on task-specific strategies. The presence of this same parameter value in different task strategies explains the cross-task correlations in behavior. However, the fact that individuals can be differentially sensitive to particular framing effects, and that different strategies can be applied by different individuals in each task explains the heterogeneity in responses. This interpretation also explains why behavior cannot be better predicted within an incentive structure, as individuals are likely to employ the same strategy within a task, regardless of the incentive structure associated with that specific question.

Our framework of stable traits and changing strategies may seem something of a departure from typical approaches in experimental economics. However, it is actually very similar to the approach taken in many other parts of the literature. As an analogue, consider how individuals respond in tasks involving risky financial gambles. Individuals respond significantly differently in choice tasks than in valuation tasks, similarly to how they behave differently in different social dilemma tasks. However, an individual who displays strong risk aversion when choosing between risky gambles is also likely to show strong risk aversion when valuing risky gambles. This risk aversion may manifest itself differently in the two tasks; nonetheless, once one has a robust model of behavior in each task, risk aversion can be estimated in one, and then used to predict responses in the other. Our results suggest that the same approach can be used in social dilemma tasks, opening a new route to understanding prosocial behavior in a variety of settings.

Why do we find consistent levels of cooperation across both tasks and incentive structures while a number of other studies have not? There are two possible reasons for the different patterns of findings. On one interpretation, studies which have failed to find cross-task or cross-incentive-level correlations may be theoretically misconceived in that their chosen tasks do not assess the same dimensions of prosociality. A second possibility is that extraneous and theoretically

irrelevant/uninteresting noise variables explain the discrepancy by in some way either overwhelming or obscuring effects of a true underlying prosociality trait. We incline toward the latter interpretation. Our study differs from earlier experiments in several ways, in particular by holding incentive structures constant across task frames. Further research will be needed to identify the specific features that determine whether evidence for a stable personality-like prosociality trait will be found in a particular study, but the results we have presented here, in providing evidence for cross-task prosociality under carefully controlled experimental conditions, may provide at least a starting-point for such an exploration.

REFERENCES

- Andreoni, J. "Cooperation in Public-Goods Experiments—Kindness or Confusion." *American Economic Review*, 85(4), 1995, 891–904.
- Apestequia, J., and F. P. Maier-Rigaud. "The Role of Rivalry—Public Goods versus Common-Pool Resources." *Journal of Conflict Resolution*, 50(5), 2006, 646–63.
- Binmore, K., and A. Shaked. "Experimental Economics: Where Next?" *Journal of Economic Behavior & Organization*, 73(1), 2010, 87–100.
- Blanco, M., D. Engelmann, and H. T. Normann. "A Within-Subject Analysis of Other-Regarding Preferences." *Games and Economic Behavior*, 72(2), 2011, 321–38.
- Camerer, C. F. "The Promise and Success of Lab-Field Generalizability in Experimental Economics: A Critical Reply to Levitt and List." SSRN Report No. 977749, 2011.
- Carpenter, J., and E. Seki. "Do Social Preferences Increase Productivity? Field Experimental Evidence from Fishermen in Toyama Bay." *Economic Inquiry*, 49(2), 2011, 612–30.
- Chaudhuri, A. "Sustaining Cooperation in Laboratory Public Goods Experiments: A Selective Survey of the Literature." *Experimental Economics*, 14(1), 2011, 47–83.
- Conybeare, J. A. C. "Public-Goods, Prisoners' Dilemmas and the International Political-Economy." *International Studies Quarterly*, 28(1), 1984, 5–22.
- Dai, Z., F. Galeotti, and M. C. Villeval. "Cheating in the Lab Predicts Fraud in the Field. An Experiment in Public Transportations." SSRN Report No. 2725911, 2016. <http://doi.org/10.2139/ssrn.2725911>
- Fehr, E., and A. Leibbrandt. "A Field Study on Cooperativeness and Impatience in the Tragedy of the Commons." *Journal of Public Economics*, 95(9–10), 2011, 1144–55.
- Fehr, E., and K. M. Schmidt. "A Theory of Fairness, Competition, and Cooperation." *Quarterly Journal of Economics*, 114(3), 1999, 817–68.
- Fischbacher, U., S. Gächter, and E. Fehr. "Are People Conditionally Cooperative? Evidence from a Public Goods Experiment." *Economics Letters*, 71(3), 2001, 397–404.
- Fischbacher, U., S. Gächter, and S. Quercia. "The Behavioral Validity of the Strategy Method in Public Good Experiments." *Journal of Economic Psychology*, 33(4), 2012, 897–913.

- Galizzi, M. M., and D. Navarro-Martinez. "On the External Validity of Social Preference Games: A Systematic Lab-Field Study." *Management Science*, 65(3), 2019, 976–1002.
- Gintis, H. "Blaming the Messenger: Notes on the Current State of Experimental Economics." *Journal of Economic Behavior & Organization*, 73(1), 2010, 109–19.
- Hauert, C., and G. Szabo. "Prisoner's Dilemma and Public Goods Games in Different Geometries: Compulsory versus Voluntary Interactions." *Complexity*, 8(4), 2003, 31–8.
- Isaac, R. M., and J. M. Walker. "Group-Size Effects in Public-Goods Provision—The Voluntary Contributions Mechanism." *Quarterly Journal of Economics*, 103(1), 1988, 179–99.
- Karlan, D. S. "Using Experimental Economics to Measure Social Capital and Predict Financial Decisions." *American Economic Review*, 95(5), 2005, 1688–99.
- Keser, C. "Voluntary Contributions to a Public Good when Partial Contribution Is a Dominant Strategy." *Economics Letters*, 50(3), 1996, 359–66.
- Kingsley, D. C., and B. Liu. "Cooperation across Payoff Equivalent Public Good and Common Pool Resource Experiments." *Journal of Behavioral and Experimental Economics*, 51, 2014, 79–84.
- Kollock, P. "Social Dilemmas: The Anatomy of Cooperation." *Annual Review of Sociology*, 24(1), 1998, 183–214.
- Lamba, S., and R. Mace. "Demography and Ecology Drive Variation in Cooperation across Human Populations." *Proceedings of the National Academy of Sciences of the United States of America*, 108(35), 2011, 14426–30.
- Ledyard, J. O. *Public Goods: A Survey of Experimental Research*. Munich, Germany: University Library of Munich, 1994.
- Ledyard, J. O., and T. R. Palfrey. "Experimental Game-Theory—Introduction." *Games and Economic Behavior*, 10(1), 1995, 1–5.
- Normann, H. T., T. Requate, and I. Waichman. "Do Short-Term Laboratory Experiments Provide Valid Descriptions of Long-Term Economic Interactions? A Study of Cournot Markets." *Experimental Economics*, 17(3), 2014, 371–90.
- Sefton, M., and R. Steinberg. "Reward Structures in Public Good Experiments." *Journal of Public Economics*, 61(2), 1996, 263–87.
- Selten, R. "Die Strategiemethode zur Erforschung des eingeschränkt rationalen Verhaltens im Rahmen eines Oligopolexperiments," in *Beiträge Zur Experimentellen Wirtschafts-Forschung*, edited by H. Sauermann. Tübingen, Germany: JCB Mohr, 1967, 136–68.
- Stoop, J., C. N. Noussair, and D. van Soest. "From the Lab to the Field: Cooperation among Fishermen." *Journal of Political Economy*, 120(6), 2012, 1027–56.

SUPPORTING INFORMATION

Additional supporting information may be found online in the Supporting Information section at the end of the article.

Appendix S1. Calculating Equilibria in PG Games with Our Incentive Structures

Appendix S2. Supplementary Regression Analyses