

Effects of antihypertensives, lipid-modifying drugs, glycaemic control drugs and sodium bicarbonate on the progression of stages 3 and 4 chronic kidney disease in adults

Taylor, Kathryn S; Mcllellan, Julie; Verbakel, Jan Y; Aronson, Jeffrey K; Lasserson, Daniel S; Pidduck, Nicola; Roberts, Nia; Fleming, Susannah; O'Callaghan, Christopher A; Bankhead, Clare R; Banerjee, Amitava; Hobbs, Fd Richard; Perera, Rafael

DOI:

[10.1136/bmjopen-2019-030596](https://doi.org/10.1136/bmjopen-2019-030596)

License:

Creative Commons: Attribution (CC BY)

Document Version

Publisher's PDF, also known as Version of record

Citation for published version (Harvard):

Taylor, KS, Mcllellan, J, Verbakel, JY, Aronson, JK, Lasserson, DS, Pidduck, N, Roberts, N, Fleming, S, O'Callaghan, CA, Bankhead, CR, Banerjee, A, Hobbs, FR & Perera, R 2019, 'Effects of antihypertensives, lipid-modifying drugs, glycaemic control drugs and sodium bicarbonate on the progression of stages 3 and 4 chronic kidney disease in adults: a systematic review and meta-analysis', *BMJ open*, vol. 9, no. 9, e030596, pp. 1-12. <https://doi.org/10.1136/bmjopen-2019-030596>

[Link to publication on Research at Birmingham portal](#)

Publisher Rights Statement:

Taylor, KS, Mcllellan, J, Verbakel, JY, Aronson, JK, Lasserson, DS, Pidduck, N, Roberts, N, Fleming, S, O'Callaghan, CA, Bankhead, CR, Banerjee, A, Hobbs, FR & Perera, R, (2019) 'Effects of antihypertensives, lipidmodifying drugs, glycaemic control drugs and sodium bicarbonate on the progression of stages 3 and 4 chronic kidney disease in adults: a systematic review and meta-analysis', *BMJ open*, vol. 9, no. 9, e030596, pp. 1-12. <https://doi.org/10.1136/bmjopen-2019-030596>

General rights

Unless a licence is specified above, all rights (including copyright and moral rights) in this document are retained by the authors and/or the copyright holders. The express permission of the copyright holder must be obtained for any use of this material other than for purposes permitted by law.

- Users may freely distribute the URL that is used to identify this publication.
- Users may download and/or print one copy of the publication from the University of Birmingham research portal for the purpose of private study or non-commercial research.
- User may use extracts from the document in line with the concept of 'fair dealing' under the Copyright, Designs and Patents Act 1988 (?)
- Users may not further distribute the material nor use it for the purposes of commercial gain.

Where a licence is displayed above, please note the terms and conditions of the licence govern your use of this document.

When citing, please reference the published version.

Take down policy

While the University of Birmingham exercises care and attention in making items available there are rare occasions when an item has been uploaded in error or has been deemed to be commercially or otherwise sensitive.

If you believe that this is the case for this document, please contact UBIRA@lists.bham.ac.uk providing details and we will remove access to the work immediately and investigate.

Download date: 23. Apr. 2024

BMJ Open Effects of antihypertensives, lipid-modifying drugs, glycaemic control drugs and sodium bicarbonate on the progression of stages 3 and 4 chronic kidney disease in adults: a systematic review and meta-analysis

Kathryn S Taylor,¹ Julie Mclellan,¹ Jan Y Verbakel,^{1,2} Jeffrey K Aronson,¹ Daniel S Lasserson,^{1,3} Nicola Pidduck,¹ Nia Roberts,⁴ Susannah Fleming,¹ Christopher A O'Callaghan,⁵ Clare R Bankhead,¹ Amitava Banerjee,⁶ FD Richard Hobbs,¹ Rafael Perera¹

To cite: Taylor KS, Mclellan J, Verbakel JY, *et al*. Effects of antihypertensives, lipid-modifying drugs, glycaemic control drugs and sodium bicarbonate on the progression of stages 3 and 4 chronic kidney disease in adults: a systematic review and meta-analysis. *BMJ Open* 2019;**9**:e030596. doi:10.1136/bmjopen-2019-030596

► Prepublication history and additional material for this paper are available online. To view these files, please visit the journal online (<http://dx.doi.org/10.1136/bmjopen-2019-030596>).

Received 21 March 2019
Revised 13 August 2019
Accepted 28 August 2019



© Author(s) (or their employer(s)) 2019. Re-use permitted under CC BY. Published by BMJ.

For numbered affiliations see end of article.

Correspondence to

Julie Mclellan;
julie.mclellan@phc.ox.ac.uk

ABSTRACT

Objective To evaluate the effects of drug interventions that may modify the progression of chronic kidney disease (CKD) in adults with CKD stages 3 and 4.

Design Systematic review and meta-analysis.

Methods Searching MEDLINE, EMBASE, Database of Abstracts of Reviews of Effects, Cochrane Central Register of Controlled Trials, Cochrane Database of Systematic Reviews, International Clinical Trials Registry Platform, Health Technology Assessment, Science Citation Index, Social Sciences Citation Index, Conference Proceedings Citation Index and Clinical Trials Register, from March 1999 to July 2018, we identified randomised controlled trials (RCTs) of drugs for hypertension, lipid modification, glycaemic control and sodium bicarbonate, compared with placebo, no drug or a drug from another class, in ≥ 40 adults with CKD stages 3 and/or 4, with at least 2 years of follow-up and reporting renal function (primary outcome), proteinuria, adverse events, maintenance dialysis, transplantation, cardiovascular events, cardiovascular mortality or all-cause mortality. Two reviewers independently screened citations and extracted data. For continuous outcomes, we used the ratio of means (ROM) at the end of the trial in random-effects meta-analyses. We assessed methodological quality with the Cochrane Risk of Bias Tool and confidence in the evidence using the Grading of Recommendations Assessment, Development and Evaluation (GRADE) framework.

Results We included 35 RCTs and over 51 000 patients. Data were limited, and heterogeneity varied. Final renal function (estimated glomerular filtration rate) was 6% higher in those taking glycaemic control drugs (ROM 1.06, 95% CI 1.02 to 1.10, $I^2=0\%$, low GRADE confidence) and 4% higher in those taking lipid-modifying drugs (ROM 1.04, 95% CI 1.00 to 1.08, $I^2=88\%$, very low GRADE confidence). For RCTs of antihypertensive drugs, there were no significant differences in renal function. Treatment with lipid-modifying drugs led to a 36% reduction in cardiovascular disease and 26% reduction in all-cause mortality.

Strengths and limitations of this study

- By focusing on patients with chronic kidney disease (CKD) stages 3 and 4, we provide a primary care perspective on the management of CKD.
- We completed an extensive and comprehensive search including common drug mis-spellings, with no restriction on language or publication type.
- Generalisability of our findings is limited by the paucity of trials, high statistical heterogeneity, high clinical heterogeneity, in terms of comorbidities and by the effect of drugs on CKD being secondary in all the studies.
- Lack of data restricted our ability to explore the baseline characteristics of studies, the effects of drugs, and the link between treatment effect and drug dose, and assess the potential for publication bias.

Conclusions Glycaemic control and lipid-modifying drugs may slow the progression of CKD, but we found no pooled evidence of benefit nor harm from antihypertensive drugs. However, given the data limitations, further research is needed to confirm these findings.

PROSPERO registration number CRD42015017501.

INTRODUCTION

Chronic kidney disease (CKD) is a long-term loss of renal function and is a global health problem, with an estimated prevalence of 11%–13%.¹ CKD is an independent risk factor for cardiovascular disease,² and people with mild-to-moderate CKD are at increased risk of mortality and progression to renal failure.³

Historically, CKD was categorised by its cause, which was predominantly diabetes,

hypertension, glomerulonephritis or polycystic kidney disease. Treatment could be recommended, but often opportunities were missed for early detection of the disease or prevention of clinical complications and further deterioration. The National Kidney Foundation addressed this challenge by developing a five-stage classification system based on the glomerular filtration rate (GFR) (online supplementary material),⁴ which was subsequently modified to take into account degrees of proteinuria (online supplementary material).⁵ A UK audit in 2012 estimated that 90% of cases of CKD are at stage 3, and of these 84% are at stage 3a (estimated GFR (eGFR) 45–59 mL/min/1.73²).⁶

Patients with CKD who are managed in primary care include those in stages 1 and 2, with an emphasis on lifestyle and diet changes. Patients in stages 3 and 4 may be managed either in primary care or shared care with specialist nephrology services, with a greater use of medication, primarily for associated long-term conditions, such as diabetes and hypertension. Both published data for Oxfordshire⁷ and unpublished national data from our group show that some patients with CKD stage 4 have their renal function monitored in primary care.

Four different classes of drugs may modify CKD progression: antihypertensives,⁸ lipid-modifying drugs,⁹ glycaemic control medications in patients with diabetes¹⁰ and sodium bicarbonate.^{11–13} Sodium bicarbonate addresses metabolic acidosis, a prevalent complication in moderate and late-stage CKD, and may offer a simple and low-cost treatment to slow CKD progression. The effects of drugs on CKD are secondary, as these drugs are primarily used to treat hypertension, hypercholesterolaemia or diabetes.

Systematic reviews have been compiled to summarise the effects of drug interventions on the rate of CKD progression.^{9 10 14–16} However, while two have reported results based on eGFR, none has reported results with reference to CKD staging. Furthermore, no systematic review has compared the effects of different drug classes.

Our objective was to carry out a systematic review and meta-analysis of randomised controlled trials (RCTs) to examine and compare the effects on the progression of CKD of the four classes of drugs, focusing on patients who can be managed in primary care or shared care with specialist nephrology services.

METHODS

Our systematic review protocol was registered with PROSPERO (International Prospective Register of Systematic Reviews) and reported in line with the recommendations from the Preferred Reporting Items for Systematic Reviews and Meta-Analyses statement.¹⁷

Search strategy

The search strategy was designed by an information specialist (NR) with advice from clinicians including nephrologists. Medical Subject Headings (MeSH) terms included terms for population, study design and

intervention drugs (randomised control trials, chronic kidney, renal, drug classes and specific drug names, including common mis-spellings). Our included drug list is shown in the online supplementary material.

Searches were conducted in Ovid MEDLINE (online supplementary material), Cochrane Central Register of Controlled Trials, Cochrane Database of Systematic Reviews, Database of Abstracts of Reviews of Effects, EMBASE, Health Technology Assessment, Science Citation Index, Social Sciences Citation Index, Conference Proceedings Citation Index, Clinical Trials Register, and the WHO International Clinical Trials Registry Platform to 6 July 2018 to identify relevant studies, regardless of their publication type. No language restriction was applied. All publications from March 1999 onwards were considered, to align with the publication of the first equation to calculate eGFR, which had led to the introduction of CKD staging.¹⁸ Reference lists were also examined.

Study selection

Two reviewers (KST, JM, NP and SF; in pairs) reviewed the title and abstract of each reference and identified potentially relevant references. Considering the full texts of these studies, two reviewers independently selected studies to be included in the review using predetermined inclusion criteria. Disagreements about study inclusion were resolved by a third reviewer.

The following were our study inclusion criteria:

1. RCTs of drugs that may modify the progression of CKD: antihypertensives, lipid-modifying drugs, glycaemic control drugs and sodium bicarbonate.
2. Control arms were either given a placebo drug, no drug intervention or a comparator drug from one of the three other classes.
3. Adult participants.
4. Patients with stage 3 and/or stage 4 CKD. Studies additionally including patients with stage 1 and/or stage 2 CKD were also included to increase the number of potential studies, but we would expect the treatment effect to be overestimated in these studies, as patients with stage 1 and 2 CKD would respond better to treatment.
5. Populations with at least 40 participants.
6. Follow-up of at least 2 years.
7. Publications reporting a quantitative summary of effect as a change from baseline, or an endpoint measure of at least one of seven prespecified outcomes.
 - i. Renal function, which could be measured by GFR, eGFR, creatinine clearance (CrCl) or estimated CrCl. This was our primary outcome of interest.
 - ii. Proteinuria, which could be measured by protein excretion rate (PER), protein creatinine ratio (PCR), albumin excretion rate (AER) or albumin creatinine ratio (ACR).
 - iii. Adverse events.
 - iv. Commencement of maintenance dialysis or kidney transplantation.
 - v. Cardiovascular events.

- vi. Cardiovascular mortality.
- vii. All-cause mortality.

We excluded trials that reported only data about populations that included people with CKD stage 5 to avoid underestimating the treatment effect, as we would expect stage 5 patients to have more comorbidities, which might lead to worse outcomes.

Data extraction and quality assessment

Data were extracted independently by two reviewers (KST, JM, NP and JYV; in pairs) using a data extraction form, which was piloted on a sample of five studies.

Extracted data included study details (setting, intervention dose and frequency, follow-up period), information on study participants (age, gender, ethnicity, smoking status, blood pressure, CKD stage, existing comorbidities) and outcome data. For one study^{19 20} we extracted endpoint eGFR data from an earlier point than the longest follow-up as the patient numbers at the longest follow-up were so small (<7% of the population). We contacted study authors to seek clarification about data and to request data that could be included in our study.

The methodological quality of studies was assessed independently by two reviewers (KST, JM, NP and JYV; in pairs) using the Cochrane Risk of Bias Tool.²¹ This tool considers the method of random sequence generation and allocation concealment (selection bias), blinding of participants, personnel and outcomes (performance and detection biases), the levels and balance of missing outcome data (attrition bias), and completeness of reporting (selective reporting bias).

Disagreements about extracted data or methodological assessments were resolved by a third reviewer.

Data synthesis and analysis

We expected high statistical heterogeneity,²² but pooled data to give an indication of the average effect. We also pooled data when there were only two or three studies, although this could be potentially misleading, in order to give an indication of potential trends had there been more study data. We carried out random-effects analyses based on the DerSimonian and Laird method,²³ assessed statistical heterogeneity using the I^2 statistic and calculated approximate 95% prediction intervals to estimate the likely effects in a clinical setting²⁴ using the methods of Higgins *et al.*²⁵

For the continuous outcomes (renal function and proteinuria), we used a ratio of means (ROM)^{26 27} effect measure, which allowed us to combine data from trials that reported different measures of renal function or proteinuria in a single analysis. Using the ROM effect measure overcomes limitations of the well-established standardised mean difference (SMD),²¹ by providing units that are more easily interpreted than SDs, and avoiding the problems associated with presenting results with SDs, which can produce misleading results by deflating treatment effects for studies of heterogeneous populations and inflating treatment effects in homogeneous

populations.²⁸ We calculated the ROM as the ratio of the final eGFR in the intervention group to the final eGFR in the comparator group, so ROM >1 favoured the intervention group for eGFR, where higher values are better than lower values. If a study of renal function reported reductions from baseline or rates of decline rather than endpoint data, we estimated the ROM of endpoints by the ratio of the reduction from baseline or rate of decline in the comparator group to that in the intervention group (the reciprocal) to ensure the direction of effect was consistent across all studies, as higher values of declining renal function are worse. ROM <1 favoured the intervention group for the proteinuria outcomes (ACR, AER, PER, PCR), where higher values are worse.

For a few studies it was necessary to make further estimates by approximating a mean using the median; estimating SD from the IQR²¹; or estimating SE of ROM by imputation using the mean value of the known SEs of the other studies.

Meta-analysis was carried out on the log-transformed ROM and its SE. For the primary analysis, eGFR measured by the Modification of Diet in Renal Disease (MDRD) equation was selected over Chronic Kidney Disease Epidemiology Collaboration (CKD-EPI) data, as MDRD is the main equation advocated in clinical guidelines and CKD-EPI was not introduced until 2009^{5 29}; eGFR was also selected over CrCl. When analysing the effects of treatments on proteinuria, we pooled data for PER, PCR, ACR and AER using a ROM effect measure. For the dichotomous outcomes, we specified the relative risk (RR) as the effect measure.

We performed separate sensitivity analyses to ensure that our estimates of the effect of treatment in studies of patients with CKD stages 3 and 4 only (our main focus) were not sensitive to our choice of model, assumptions, quality of the studies, estimations made or our choices of data.

The following were the prespecified sensitivity analyses:

- ▶ Fixed-effect analyses based on the inverse-variance method were carried out for the continuous outcomes and based on the Mantel-Haenszel method for the dichotomous outcomes.^{30 31}
- ▶ Excluding studies rated as low quality, which we defined as having a high risk of attrition bias or allocation concealment bias; studies rated as 'unclear' were not excluded.
- ▶ Excluding studies without intention-to-treat analysis. This was prespecified on the assumption that we would be dealing with primary studies of the progression of CKD, but as the studies were secondary or post-hoc this analysis was no longer relevant.

The following were further, standard set of sensitivity analyses:

- ▶ Excluding studies with estimates.
- ▶ Using more conservative estimates, considering those of the SE of ROM by imputing with the 75% percentile value of the known SEs rather than the mean value, reflecting greater uncertainty.

- ▶ Using alternative data, considering CKD-EPI data instead of MDRD data, for studies that measured eGFR using both equations.
- ▶ Excluding studies that measured PCR and PER in the analysis of proteinuria, as urine albumin is a more accurate measure of glomerular damage.
- ▶ Excluding each individual study, one by one, to see if the level of heterogeneity depended on a particular study.

The following were post-hoc sensitivity analyses:

- ▶ Using the Hartung-Knapp-Sidik-Jonkman variance correction to calculate 95% CIs reflecting the uncertainty in heterogeneity estimates.^{32–34}
- ▶ Excluding studies with non-placebo controls.

Our prespecified subgroup analyses were by age (<65 or ≥65 years), ethnicity, smoking status, intensity of intervention, high blood pressure (≥140/90 mm Hg), low blood pressure (≤90/60 mm Hg), method of eGFR measurement, degree of proteinuria in the renal function analysis, drug type within each drug class and by CKD stages 3 and 4 separately. Heterogeneity was assessed using the I^2 statistic. Publication bias was explored using funnel plot analysis with contour plots.^{21 35}

We used the Grading of Recommendations Assessment, Development and Evaluation (GRADE) framework²¹ to report the overall quality of evidence for the primary outcome (final eGFR). The certainty in the evidence for each outcome was graded as high, moderate, low or very low.

When describing the included trials, we refer to 'studies' to encompass single trials and publications that report more than one trial. When reporting analyses of the effects of the drugs, we refer to populations as some studies reported data for CKD subgroups or dose-dependent subgroups. All results of meta-analysis are displayed in forest plots and/or tabulated. Results are divided into those for studies of patients with CKD stages 3 and 4 only and studies of patients with CKD stages 3 and 4 mixed with patients with stages 1 and 2.

All analyses were carried out using STATA v.14.2,³⁶ except the risk of bias figures which were created in RevMan v.5.3.³⁷

Patient involvement

Members of a patient and public involvement group were part of the Stakeholder Group and Steering Committee of the National Institute for Health Research (NIHR) Programme Grant that inspired this study. No patients or patient representatives were involved in setting the outcome measures, nor were they directly involved in developing plans for the design or implementation of the study. Three members of this group commented on our manuscript and we thank them for their help in the Acknowledgement section. A 1-day dissemination event is planned to report the results of all the studies funded by the NIHR Programme Grant, including this study. Members of the patient and public involvement group will be invited to this event.

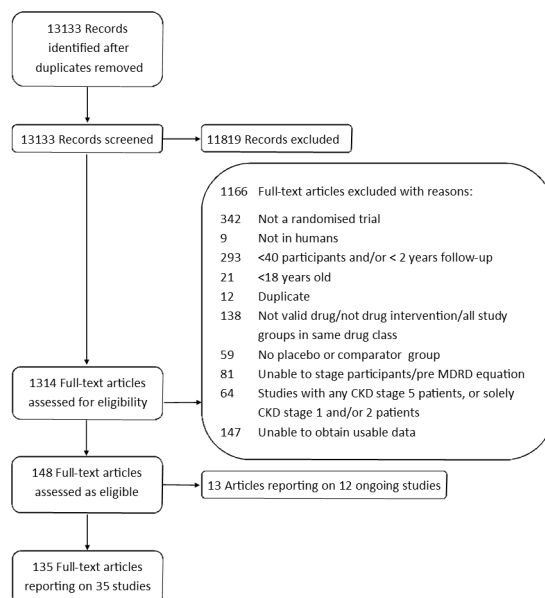


Figure 1 PRISMA diagram. PRISMA, Preferred Reporting Items for Systematic Reviews and Meta-Analyses. CKD, chronic kidney disease; MDRD, Modification of Diet in Renal Disease.

RESULTS

Search results

Through database registry and hand searches, we identified 13 133 records (figure 1), of which 35 studies (51 155 patients) satisfied our eligibility criteria.

Study characteristics

Most of the 35 studies reported data about a single trial, while 3 studies reported data about a pooled analysis of more than one trial.^{19 20 38–43} Of the 35 studies, 1 was from China,⁴⁴ 1 from Tasmania,⁴⁵ 3 from Japan,^{46–51} 6 from USA/Canada,^{52–65} 9 from Europe,^{13 66–78} either in single or multiple countries, and the other 15 studies were multinational (online supplementary material). Nineteen studies^{13 19 20 38–40 44 48–57 61–65 68–70 74 75 78–90} provided data for populations with CKD stages 3 and/or 4 only. These studies had between 108 and 3094 patients, and the mean or median follow-up was between 24 and 66 months.

One study⁶⁷ had a 2×2 factorial design involving an antihypertensive drug and a lipid-modifying drug, and this study is included in our analysis of both antihypertensive drugs and lipid-modifying drugs. Another study had a 2×2^{71 72} factorial design involving two antihypertensive drugs and a lipid-modifying drug, and this study is only included in our analysis of lipid-modifying drugs because all patients received antihypertensives. The other 33 studies were 12 studies of antihypertensives,^{16 38–40 44 46 47 52–57 66 67 79–83 91–98} 13 of lipid-modifying drugs,^{45 48–51 58–63 68–70 73–78 84–86 99–104} 6 of glycaemic control agents^{19 20 41–43 87–90 105–107} and 2 of sodium bicarbonate^{13 64 65} (online supplementary material). Four studies^{45 58–60 73 102–104} had populations with CKD and no comorbidities highlighted, 27 studies had a single comorbidity, and 4 studies had more than one

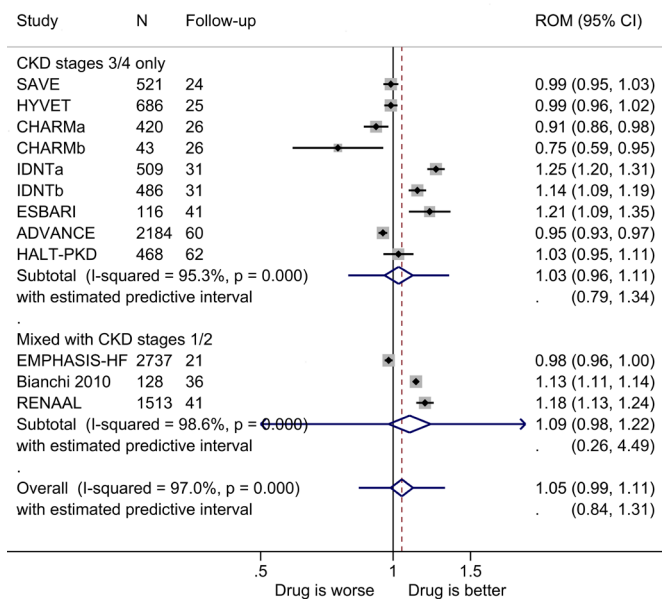


Figure 2 ROM of estimated glomerular filtration rate at the end of the trials for antihypertensives versus comparator (boxes) and pooled estimates across studies (diamonds) calculated by the random-effects DerSimonian and Laird method, split by CKD stage. CHARMa and CHARMb, CKD stages 3 and 4, respectively, with estimated glomerular filtration rate measured by the MDRD equation. IDNTa, intervention is irbesartan; IDNTb, intervention is amlodipine. CKD, chronic kidney disease; MDRD, Modification of Diet in Renal Disease; ROM, ratio of means.

comorbidity. Comorbidities were cardiovascular in 19 studies^{19 20 38–43 46–51 53 54 57 61–63 68–72 74–78 81–83 89–92 98–101}; type II diabetes in 9 studies^{19 20 41–43 53–56 79 80 87–90 93–97 105–107} (including all 6 studies of glycaemic control drugs); and a renal disorder or damage (idiopathic chronic glomerulonephritis, advanced chronic renal insufficiency without diabetes, advanced autosomal dominant polycystic kidney disease, renal impairment and metabolic acidosis) in 7 studies^{13 44 52 64–67 84–86} (online supplementary material). In 15 studies,^{13 45–47 61–67 71–73 76 77 91–99 107} the population analysed for our primary outcome was the whole trial population, and in the other 20 the population analysed was a subgroup of the trial population, reported as either a subgroup or post-hoc analysis (online supplementary material).

Baseline data were provided for the same population as that included in our analyses for 19 of the 35 studies^{13 45 49–51 58–70 73 76–80 84–88 91–98 107}; for the other 16 studies, baseline data were only provided for either a different subset of the trial population or the whole trial population (online supplementary material).

Risk of bias

We considered the methodological quality of all 35 eligible studies (online supplementary material), based on the design of the trial(s) from which data were obtained. Eight studies^{19 20 44 71–73 84–88 98 105 106} were ranked with high quality as they had ‘Low’ risk of bias across all domains, and we rated one study^{76 77} as ‘High’ risk of bias

for three domains and ‘Unclear’ across two domains. Most studies described their method of randomisation, but fewer studies were clear about how they concealed the group allocation and whether participants, personnel and outcome assessors were blinded. The risk of attrition bias was high in nearly a quarter of the studies.

We had sufficient data to consider the possibility of publication bias based on the primary outcome of renal function in those taking antihypertensive and lipid-modifying drugs. The contour-enhanced funnel plots suggested possible publication bias, as few studies were in the area of non-significance (online supplementary material).

Renal function

Most of the available data were on eGFR.

The pooled ROM of eGFR for antihypertensive drugs versus comparators at the end of the studies is shown in figure 2. There was no significant effect in studies of populations with CKD stages 3 and 4, and heterogeneity between studies was substantial at 94% (yielding a prediction interval of 0.79–1.34), and this was not attributable to a single study. Adding data from the studies of patients that included those with CKD stages 1 and/or 2 increased the benefit to the intervention group but not significantly. All except one study (Bianchi *et al*⁶⁶) had placebo controls. All the sensitivity analyses produced similar results of no significant treatment effect and heterogeneity remained substantial (online supplementary material).

The only subgroup analysis that was possible, of those prespecified, was by drug type within the antihypertensive drug class. Among studies of CKD stages 3 and 4 only, there were no significant treatment effects within the different drug types (online supplementary material), except in the case of calcium channel blockers, where the endpoint eGFR was 14% higher in the intervention group (ROM 1.14, 95% CI 1.01 to 1.27), but this was based on a single study.^{53 54}

In studies of patients with CKD stages 3 and 4, there was a marginally higher benefit to those taking the lipid-modifying drugs (figure 3), as the endpoint eGFR was 4% higher (ROM 1.04, 1.00 to 1.08, statistically significant, $I^2=88$; STATA’s metaninf command produced output that indicated that the lower confidence bound was 1.0001 to 4 decimal places) with a prediction interval of 0.91–1.18. This result was not robust as the results of sensitivity analysis were variable (online supplementary material). The high degree of heterogeneity was attributed to the Study of Heart and Renal Protection^{102–104} of the CKD stage 4 subgroup, as removing this study reduced I^2 from 88.3% to 45.3%. The intervention for this study was a higher dose of statin than in the other studies, and another lipid-modifying drug, ezetimibe, was also used. Adding data from the studies of patients including those with CKD stages 1 and/or 2 increased the benefit to the intervention group but not significantly, and there was substantial heterogeneity between studies ($I^2=98\%$). Three trials had non-placebo controls (ASUCA,⁴⁸ MEGA^{49–51} and GREACE^{76 77}).

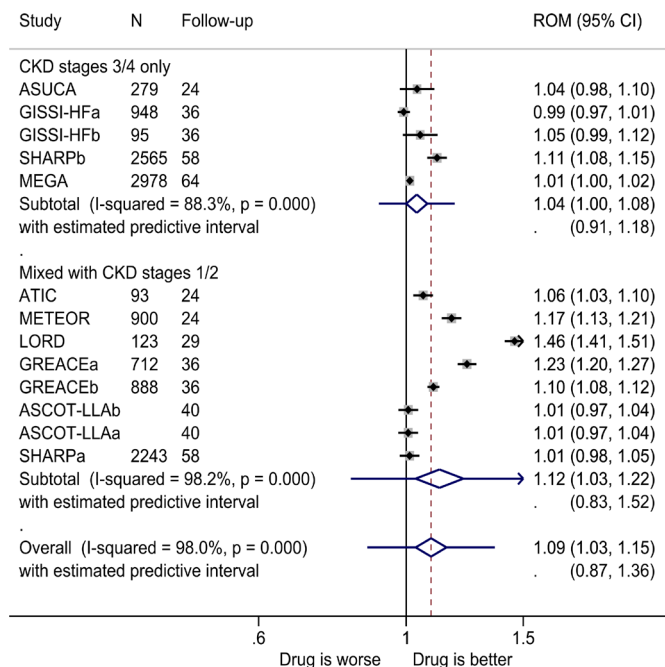


Figure 3 ROM of estimated glomerular filtration rate at the end of the trials for lipid-modifying drugs versus comparator (boxes) and pooled estimates across studies (diamonds) calculated by the random-effects DerSimonian and Laird method, split by CKD stage. ASCOT-LLAa, atorvastatin and amlodipine versus placebo and amlodipine; ASCOT-LLAb, atorvastatin and atenolol versus placebo and atenolol; GISSI-HFa, CKD stage 3; GISSI-HFb, CKD stage 4; GREACEa, atorvastatin versus usual care for the group with metabolic syndrome; GREACEb, atorvastatin versus usual care for the group without metabolic syndrome; SHARPa, CKD stages 1–3; SHARPB, CKD stage 4. CKD, chronic kidney disease; ROM, ratio of means; SHARP, Study of Heart and Renal Protection.

There was a significant benefit to those taking glycaemic controlling drugs (figure 4) as the mean eGFR at the end of the study was 6% higher in the intervention group (ROM 1.06, 1.02 to 1.10). Heterogeneity between studies was low ($I^2=0\%$), yielding a prediction interval of 1.01–1.11. Sensitivity analyses showed that this result was robust (online supplementary material). Adding the CKD stage 1–4 studies, there was no significant difference between the intervention and comparator groups, and the heterogeneity between studies was high ($I^2=85\%$). In all studies the comparator groups received placebo drugs. We assessed the outlier^{41–43} as having high attrition bias, as of the 1887 who were randomised only 487 completed the 104-day study period. After excluding this study, there was a significant benefit to the intervention group, which was similar to that for the studies of patients with CKD stages 3 and 4.

A study^{64 65} of patients with CKD stage 3 reported a 22% higher endpoint eGFR from taking sodium bicarbonate (ROM 1.22, 1.10 to 1.36). Another study¹³ of patients with CKD stage 4 reported that taking sodium bicarbonate produced no significant effect on renal function in terms of CrCl (ROM 0.94, 0.85 to 1.05). Pooling these

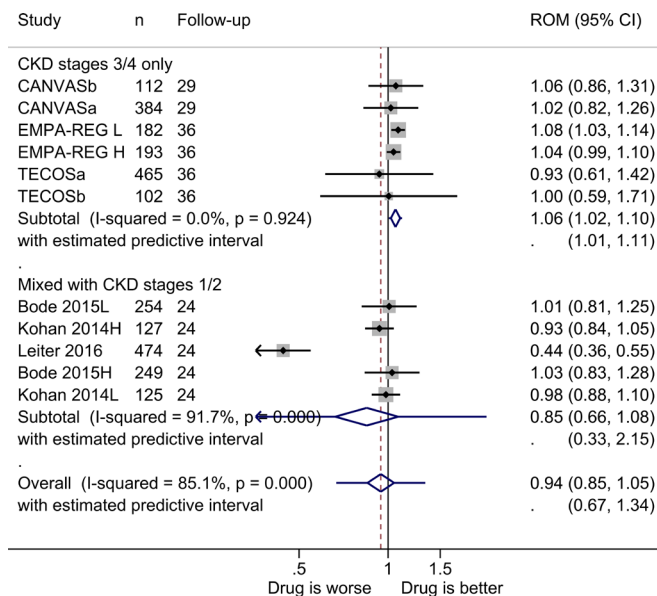


Figure 4 ROM of estimated glomerular filtration rate at the end of the trials for glycaemic control drugs versus comparator (boxes) and pooled estimates across studies (diamonds) calculated by the random-effects DerSimonian and Laird method, split by CKD stage. Bode 2015L, intervention is low-dose canagliflozin (100 mg per day); Bode 2015H, intervention is high-dose canagliflozin (300 mg per day); EMPA-REG H, intervention is high-dose empagliflozin (25 mg daily); EMPA-REG L, intervention is low-dose empagliflozin (10 mg daily); Kohan 2014L, intervention is low-dose dapagliflozin (5 mg per day); Kohan 2014H, intervention is high-dose dapagliflozin (10 mg per day); CANVASa, CKD stage 3a; CANVASb, CKD stage 3b; TECOSa, CKD stage 3a; TECOSb, CKD stage 3b. CKD, chronic kidney disease; ROM, ratio of means.

data, there was no significant treatment effect based on renal function (online supplementary material). In both studies the comparator groups received routine care.

Figure 5 summarises the effects of treatment on renal function by drug class for the four drug classes.

The GRADE confidence in these estimates was very low for our analysis of antihypertensive drugs, lipid-regulating drugs and sodium bicarbonate, and low for our analysis of glycaemic control drugs.

Proteinuria

Data pooling for proteinuria was possible only for antihypertensive drugs in five studies. For studies of CKD stages 3 and 4 and overall, there was no significant treatment effect (online supplementary material), with ROM of 0.91 (0.78 to 1.05) and low heterogeneity at 41.3%. All sensitivity analyses produced the same result of no treatment effect with low heterogeneity (online supplementary material).

Two studies of lipid-modifying drugs presented proteinuria. The ATIC study⁷³ of patients with CKD stages 2–4 reported that treatment reduced urinary albumin excretion and provided medians and ranges of the AER (77, 3–2509 mg/24 hours for the intervention group, and 107,

Drug class	Studies	Population	I ²	Summary effect (95% confidence interval)
Antihypertensive	9	5433	95.3%	1.03 (0.96, 1.11)
Lipid modification	5	6865	88.3%	1.04 (1.00, 1.08)
Glycaemic control	6	1438	0%	1.06 (1.02, 1.10)
Bicarbonates	2	180	91.1%	1.08 (0.84, 1.38)

Figure 5 Effect of treatment on estimated glomerular filtration rate by drug class: CKD stages 3 and 4 only. ROM >1 favoured the intervention group (higher values are better). 'Studies' refers to the study of different populations. Of the 35 included studies, 15 reported renal function of patients with CKD stage 3 and/or stage 4. Of these, 9 reported renal function of a single population and 6 reported results for two CKD subgroups or dose-dependent subgroups. CKD, chronic kidney disease; ROM, ratio of means.

5–3545 mg/24 hours for the comparator group). The PREVEND IT lipid study⁶⁷ of patients with CKD stages 1–3 reported that treatment slightly increased urinary albumin excretion by quoting medians and IQRs (21.8 and 11.6–41.9 mg/24 hours for the intervention group, and 20.3 and 12.5–40.5 mg/24 hours for the control group).

One glycaemic control study presented proteinuria as an outcome. The CANVAS programme^{19 20} reported that treatment significantly reduced albuminuria compared with the placebo group. ACR was expressed on the geometric mean scale, as 13% lower in the intervention group compared with the controls (95% CI 1% to 24%)

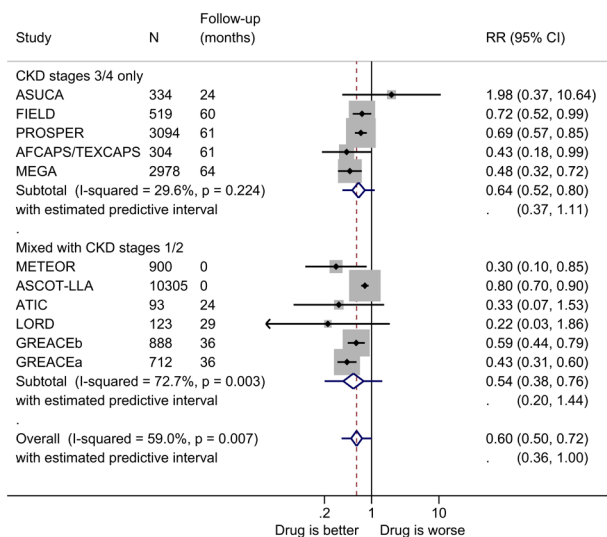


Figure 6 Relative risk (RR) of cardiovascular disease during trials of lipid-modifying drugs versus comparator (boxes) and pooled estimates across trials (diamonds) calculated by the random-effects DerSimonian and Laird method, split by CKD stage. GREACEa, atorvastatin versus usual care for the group with metabolic syndrome; GREACEb, atorvastatin versus usual care for the group without metabolic syndrome. CKD, chronic kidney disease.

in patients with CKD stage 3a, and 26% lower (95% CI 20% to 31%) in patients with CKD stages 3b and 4.

One sodium bicarbonate study^{64 65} reported that treatment lowered the ACR by quoting a median (IQR) of 257.1 (205.5–305.0 mg/g creatinine) for the intervention group and 300.3 (241.8–347.5 mg/g creatinine) for the control group.

Adverse events

There were no significant differences in the risk of adverse events in the studies of antihypertensives, lipid-modifying drugs and glycaemic control agents (online supplementary material). Neither of the bicarbonate studies reported adverse events.

Maintenance dialysis and kidney transplantation

Two studies of antihypertensive drugs reported the number of patients who deteriorated and required maintenance dialysis or kidney transplantation. The risk in the intervention group was 31% lower than in the control group in the HALT PKD study⁵² of patients with stages 3 and 4 CKD (RR 0.69, 95% CI 0.50 to 0.96). In the RENAAL study,^{93–97} which was based on patients with CKD stages 2–4, treatment with antihypertensives led to a 23% reduction in risk of deterioration to kidney failure (RR 0.77, 95% CI 0.64 to 0.93). There were no significant differences in this outcome in the studies of lipid-modifying drugs or glycaemic control drugs (online supplementary material).

Cardiovascular events

There were no significant differences between the intervention and control groups in the risk of cardiovascular events in the studies of antihypertensives, whereas treatment with lipid-modifying drugs led to a reduction in risk of 36% (RR 0.64, 95% CI 0.52 to 0.80, I²=30%) (figure 6). All the sensitivity analyses yielded similar results and heterogeneity generally remained low (online supplementary material). The reduction in risk was slightly higher when data were added from the studies of patients that included those with CKD stages 1 and/or 2, but this reduction in risk was not significant (online supplementary material).

The TECOS glycaemic control study^{89 90} reported the number of patients who experienced cardiovascular events in patients with CKD stage 3. They reported no significant differences between the intervention and control groups (online supplementary material).

Mortality

In both our analyses of the studies of antihypertensive drugs and glycaemic control drugs, we found no significant differences, between the intervention and comparator groups, in the risk of cardiovascular mortality and all-cause mortality (online supplementary material).

Two studies reported the effect of lipid-modifying drugs on the risk of cardiovascular mortality in patients with CKD stages 3 and 4. In the FIELD study,^{84–86} the risk was 47% lower in the intervention group (RR 0.53, 95% CI

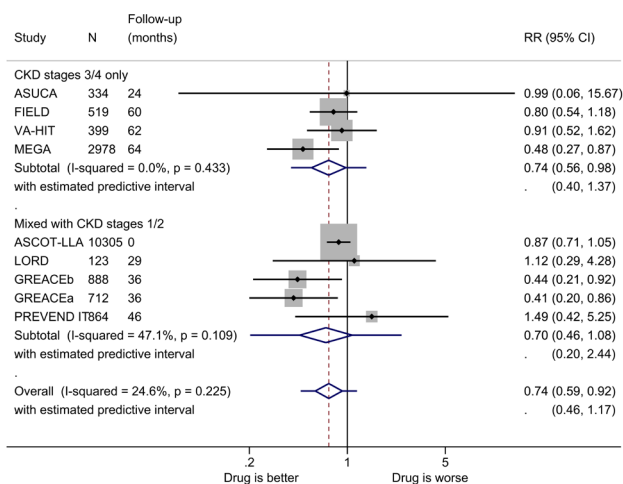


Figure 7 Relative risk (RR) of all-cause mortality during trials of lipid-modifying drugs versus comparator (boxes) and pooled estimates DerSimonian and Laird method, split by CKD stage. GREACEa, atorvastatin versus usual care for the group with metabolic syndrome; GREACEb, atorvastatin versus usual care for the group without metabolic syndrome. CKD, chronic kidney disease.

0.30 to 0.92), and in the AFCAPS/TEXCAPS study^{58–60} there was no significant difference.

In the studies of patients with CKD stages 3 and 4 only, treatment with lipid-modifying drugs reduced the risk of all-cause mortality by 26% (RR 0.74, 95% CI 0.56 to 0.98) (figure 7 and online supplementary material).

DISCUSSION

Main findings

We found limited data on the effects of antihypertensive, lipid-modifying and glycaemic control drugs and sodium bicarbonate on the progression of renal function in patients with CKD stages 3 and 4. There was heterogeneity of patient populations in the included studies. Pooling data provided no pooled evidence of benefit or impairment of renal function in these patients attributable to antihypertensive drugs. There was some suggestion of benefit to renal function from taking glycaemic control drugs and lipid-modifying drugs, and a clear reduction in cardiovascular disease and all-cause mortality by taking lipid-modifying drugs. There was insufficient evidence to draw any conclusions about sodium bicarbonate. There were only sufficient data to study the effects of antihypertensive drugs on proteinuria and we found no significant treatment effect.

Comparison with other reviews

Our review is comparable with two reviews of drug interventions in patients with CKD, as they report changes in eGFR as outcome measures. Our findings on the protective effect of lipid-modifying drugs are consistent with the findings of Sandhu *et al*,⁹ who concluded that statins

produce a small reduction in the progression of CKD in patients with cardiovascular disease. Our results are also consistent with those of Lewis *et al*,¹⁶ who reported the preliminary results of a review that considered the effect on kidney function of lowering low-density lipoprotein cholesterol with statins. Their preliminary findings suggested that for patients taking statins there was a highly significant reduction in the annual rate of CKD progression compared with control groups (based on the annual rate of change in eGFR). Both of these studies considered general populations with CKD. Our finding that lipid-modifying drugs reduce the risk of cardiovascular events and all-cause mortality also concurs with other reviews of patients with CKD.^{108–110}

Strengths and limitations

Our study is a first attempt to summarise the literature on drug treatment for patients with CKD types 3 and 4. We have identified, evaluated and compared the effects of different drug interventions on reducing the rate of CKD progression in patients with CKD stages 3 and 4. By focusing on this patient group, we took a primary care perspective on the management of CKD. Our search was extensive and comprehensive, with no restrictions on language or publication type. By using the ROM as the effect measure for continuous outcomes, we were able to pool data on different measures in a single analysis and overcome the limitations of the more established SMD. This provided an overall indication of the treatment effect, as did pooling data in cases where there were few studies or a high degree of heterogeneity. The generalisability of our findings is limited by the paucity of studies, the high degree of statistical heterogeneity, and clinical heterogeneity in terms of comorbidities and treatment interventions. We concluded that clinical heterogeneity was inevitable in studies in these patients, as most were undergoing treatment with background medications. Paucity of data restricted our ability to explore the baseline characteristics of studies and the effects of lipid-modifying drugs, glycaemic control drugs and bicarbonates, particularly on proteinuria and our other secondary outcomes. We were also restricted in our ability to investigate the link between treatment effect and drug dose and assess publication bias fully. There was a wide variation of study characteristics (in terms of population size and follow-up period) and baseline characteristics (in terms of male/female split, smoking status, ethnicity and hypertensive status). The generalisability of the findings is also limited by the effect of drugs on CKD being secondary in all the studies. For example, antihypertensives target hypertension and glycaemic control drugs target diabetes. Our ability to assess the quality of the included studies was restricted, because for nearly half the studies we could not assess allocation concealment bias, and for around a quarter of the studies we could not ascertain the risk of attrition bias or whether the participants, personnel and outcomes assessors had been blinded. Further bias may have arisen as most of the reports in our included studies

were subgroup or post-hoc analyses of trials. The balance achieved by randomising the whole trial population may not apply to subgroups of patients. However, we were unable to check this as few of these studies reported the necessary baseline characteristics, split by intervention group. Few studies reported the use of maintenance dialysis and kidney transplantation, which may be considered to be more appropriate survival outcomes for patients with CKD stages 3 and 4, compared with mortality. Limitations may also arise from the possible impact on patient management decisions following the introduction of CKD staging in 2002. Before that, patients were treated on the basis of the perceived cause of CKD rather than the CKD itself. A number of the included studies had recruitment periods that began before 2002, so their populations would be a mixture of patients managed under the old and new guidance. However, in spite of all these limitations, the results of our analyses are consistent with those of other studies.

Implications for clinical practice and future research

In populations with CKD stages 3 and 4, lipid-modifying drugs and glycaemic control drugs may improve renal function, and lipid-modifying drugs are associated with a reduction in cardiovascular events. Although antihypertensive drugs and sodium bicarbonate are presumed to reduce CKD progression,^{8 11–13} we did not find a significant treatment effect. However, the paucity of data and high heterogeneity do not allow strong recommendations for clinical practice. Therefore, future research is needed into the effects of drugs on the progression in CKD, in particular in studies that focus on CKD progression as a primary outcome.

Our finding of limited data is important given that CKD is a common progressive disease. The drugs we considered are commonly used, but studies have concentrated on cardiovascular outcomes and not CKD outcomes.

CONCLUSIONS

This review suggests that glycaemic control and lipid regulation may improve renal function in patients with moderate CKD. There was no pooled evidence of either benefit or harm from antihypertensive drugs. However, the data were limited and heterogeneity was high for many of the analyses. Therefore, our findings are tentative.

Author affiliations

¹Nuffield Department of Primary Care Health Sciences, University of Oxford, Oxford, UK

²Department of Public Health and Primary Care, KU Leuven, Leuven, Belgium

³Institute of Applied Health Research, University of Birmingham, Birmingham, UK

⁴Bodleian Health Care Libraries, University of Oxford, Oxford, UK

⁵John Radcliffe Hospital, Oxford Radcliffe Hospitals Trust, Oxford, UK

⁶Farr Institute of Health Informatics Research, University College London, London, UK

Acknowledgements We would like to thank all those who clarified our queries about their trials and/or provided additional data, including Professor Nathaniel Hawkins, Professor Fan Fan Hou, Ms Jennifer Meessen, Professor Bruce Neal,

Professor Valdo Perkovic, Dr Ruth Peters, Professor Scott D Solomon, Dr Di Xie and a number of anonymous others. We would also like to acknowledge all those who provided data and/or clarification about their trials which, unfortunately, we were unable to include in our study, including Professor Fan Fan Hou and Dr Di Xie, Mr Colin Bicknell, Professor Bob Byington, Dr Enayet Karim Chowdhury, Professor Fan Fan Hou, Dr Dipak Kotecha, Dr Javier Martinez-Martin, Professor John McMurray, Dr Robert G Nelson, Nove Nordisk, Hiromi Rakugi MD, Dr Marcello Tonelli, Professor William White, Dr Di Xie and Professor Keng Thye Woo. Thanks also to Dr Bobby Mihaylova, who helped produce the protocol for this review; Dr Richard Stevens, who provided some statistical advice; Dr Brian Shine, who provided advice on pooling different measures of CKD and proteinuria; Professor Paul Glasziou, Dr Bobby Mihaylova, and from the Patient and Public Involvement Group, Dr Elizabeth Holloway, Dr Peter Kirby and Mrs Rachael Patel, for their comments about the manuscript and helpful suggestions that have improved the text; and the Stakeholder Group and Steering Committee of our NIHR Programme Grant, for discussions that inspired this paper.

Contributors JM, RP, CRB, JYV, JKA, DSL, CAOC, KT, FDRH and AB were involved in the conception and design of the study. NR, assisted by JM and JKA, devised the search strategy. NR completed the search. JM, NP, KST, JYV and SF selected studies for inclusion, and KST, JM, JYV and NP extracted data. KST carried out the data analysis with advice from RP. KST and JM together wrote the first draft of the manuscript, and all authors contributed critically to subsequent revisions and approved the final manuscript. KST and JM had full access to all data in the study and take responsibility for the integrity and accuracy of the data analysis. KST and JM are guarantors.

Funding This article presents independent research funded by the NIHR under the Programme Grants for Applied Research (RP-PG-1210-12003). The views expressed are those of the authors and not necessarily those of the NHS, the NIHR or the Department of Health.

Competing interests KST, JM, JKA and SF receive funding from the NIHR Programme for Applied Research. JYV receives funding from the NIHR Community Healthcare MIC, Nuffield Department of Primary Care Health Sciences and University of Oxford NIHR Diagnostic Evidence Co-operative (DEC). DSL receives funding from the NIHR Community Healthcare MIC. FDRH acknowledges his part-funding from the National Institute for Health Research (NIHR) School for Primary Care Research, the NIHR Collaboration for Leadership in Health Research and Care (CLAHRC) Oxford, the NIHR Oxford Biomedical Research Centre (BRC) (UHT), and the NIHR Oxford Medtech and In Vitro Diagnostics Co-operative (MIC). RP receives funding from the NIHR Oxford Biomedical Research Centre Programme, the NIHR Programme for Applied Research, the NIHR HPRU Gastrointestinal Infections Group, and the NIHR Diagnostic Evidence Co-operative (DEC).

Patient consent for publication Not required.

Provenance and peer review Not commissioned; externally peer reviewed.

Data availability statement All data relevant to the study are included in the article or uploaded as supplementary information.

Open access This is an open access article distributed in accordance with the Creative Commons Attribution 4.0 Unported (CC BY 4.0) license, which permits others to copy, redistribute, remix, transform and build upon this work for any purpose, provided the original work is properly cited, a link to the licence is given, and indication of whether changes were made. See: <https://creativecommons.org/licenses/by/4.0/>.

REFERENCES

- Hill NR, Fatoba ST, Oke JL, *et al*. Global Prevalence of Chronic Kidney Disease - A Systematic Review and Meta-Analysis. *PLoS One* 2016;11:e0158765.
- Go AS, Chertow GM, Fan D, *et al*. Chronic kidney disease and the risks of death, cardiovascular events, and hospitalization. *N Engl J Med* 2004;351:1296–305.
- National Institute for Health and Care Excellence. *Chronic kidney disease: early identification and management of chronic kidney disease in adults in primary and secondary care (CG182*. London: National Clinical Guideline Centre, 2014.
- Levey AS, Eckardt K-U, Tsukamoto Y, *et al*. Definition and classification of chronic kidney disease: a position statement from kidney disease: improving global outcomes (KDIGO). *Kidney Int* 2005;67:2089–100.
- Levin A, Stevens PE. Summary of KDIGO 2012 CKD guideline: behind the scenes, need for guidance, and a framework for moving forward. *Kidney Int* 2014;85:49–61.

6. de Lusignan S, Tomson C, Harris K, *et al*. UK Prevalence of Chronic Kidney Disease for the Adult Population Is 6.76% Based on Two Creatinine Readings. *Nephron Clin Pract* 2012;120:107–c07.
7. Oke J, Shine B, McFadden E, *et al*. Trends in serum creatinine testing in Oxfordshire, UK, 1993-2013: a population-based cohort study. *BMJ Open* 2015;5:e009459.
8. Peterson JC, Adler S, Burkart JM, *et al*. Blood pressure control, proteinuria, and the progression of renal disease. the modification of diet in renal disease study. *Ann Intern Med* 1995;123:754–62.
9. Sandhu S, Wiebe N, Fried LF, *et al*. Statins for improving renal outcomes: a meta-analysis. *J Am Soc Nephrol* 2006;17:2006–16.
10. Wang PH, Lau J, Chalmers TC. Meta-Analysis of effects of intensive blood-glucose control on late complications of type I diabetes. *Lancet* 1993;341:1306–9.
11. Phisitkul S, Khanna A, Simoni J, *et al*. Amelioration of metabolic acidosis in patients with low GFR reduced kidney endothelin production and kidney injury, and better preserved GFR. *Kidney Int* 2010;77:617–23.
12. Mahajan A, Simoni J, Sheather SJ, *et al*. Daily oral sodium bicarbonate preserves glomerular filtration rate by slowing its decline in early hypertensive nephropathy. *Kidney Int* 2010;78:303–9.
13. de Brito-Ashurst I, Varagunam M, Raftery MJ, *et al*. Bicarbonate supplementation slows progression of CKD and improves nutritional status. *J Am Soc Nephrol* 2009;20:2075–84.
14. Lv J, Ehteshami P, Sarnak MJ, *et al*. Effects of intensive blood pressure lowering on the progression of chronic kidney disease: a systematic review and meta-analysis. *CMAJ* 2013;185:949–57.
15. Bakris GL. Slowing nephropathy progression: focus on proteinuria reduction. *Clin J Am Soc Nephrol* 2008;3(Suppl 1):S3–S10.
16. Lewis A, Emberson JR, Blackwell LJ, *et al*. Effect of lowering LDL-cholesterol on kidney function: meta-analysis of data from 120,000 participants in 21 randomized trials. Abstract supplement. *J Am Soc Nephrol* 2012;23:685A.
17. Liberati A, Altman DG, Tetzlaff J, *et al*. The PRISMA statement for reporting systematic reviews and meta-analyses of studies that evaluate healthcare interventions: explanation and elaboration. *BMJ* 2009;339:b2700.
18. Levey AS, Bosch JP, Lewis JB, *et al*. A more accurate method to estimate glomerular filtration rate from serum creatinine: a new prediction equation. Modification of diet in renal disease study group. *Ann Intern Med* 1999;130:461–70.
19. Neuen BL, Ohkuma T, Neal B, *et al*. Cardiovascular and renal outcomes with canagliflozin according to baseline kidney function. *Circulation* 2018;138:1537–50.
20. Neal B, Perkovic V, Mahaffey KW, *et al*. Canagliflozin and cardiovascular and renal events in type 2 diabetes. *N Engl J Med* 2017;377:644–57.
21. Higgins JPT, Green S. *Cochrane Handbook for systematic reviews of interventions*. New Jersey, United States: Wiley-Blackwell, 2011.
22. Higgins JPT. Commentary: heterogeneity in meta-analysis should be expected and appropriately quantified. *Int J Epidemiol* 2008;37:1158–60.
23. DerSimonian R, Laird N. Meta-analysis in clinical trials. *Control Clin Trials* 1986;7:177–88.
24. Riley RD, Higgins JPT, Deeks JJ. Interpretation of random effects meta-analyses. *BMJ* 2011;342:d549.
25. Higgins JPT, Thompson SG, Spiegelhalter DJ. A re-evaluation of random-effects meta-analysis. *J R Stat Soc Ser A Stat Soc* 2009;172:137–59.
26. Friedrich JO, Adhikari NKJ, Beyene J. The ratio of means method as an alternative to mean differences for analyzing continuous outcome variables in meta-analysis: a simulation study. *BMC Med Res Methodol* 2008;8:32.
27. Friedrich JO, Adhikari NKJ, Beyene J. Ratio of means for analyzing continuous outcomes in meta-analysis performed as well as mean difference methods. *J Clin Epidemiol* 2011;64:556–64.
28. Guyatt GH, Thorlund K, Oxman AD, *et al*. Grade guidelines: 13. preparing summary of findings tables and evidence profiles-continuous outcomes. *J Clin Epidemiol* 2013;66:173–83.
29. Levey AS, Stevens LA, Schmid CH, *et al*. A new equation to estimate glomerular filtration rate. *Ann Intern Med* 2009;150:604–12.
30. Mantel N, Haenszel W. Statistical aspects of the analysis of data from retrospective studies of disease. *J Natl Cancer Inst* 1959;22:719–48.
31. Greenland S, Robins JM. Estimation of a common effect parameter from sparse follow-up data. *Biometrics* 1985;41:55–68.
32. Cornell JE, Mulrow CD, Localio R, *et al*. Random-effects meta-analysis of inconsistent effects: a time for change. *Ann Intern Med* 2014;160:267–70.
33. Röver C, Knapp G, Friede T. Hartung-Knapp-Sidik-Jonkman approach and its modification for random-effects meta-analysis with few studies. *BMC Med Res Methodol* 2015;15:99.
34. Hartung J, Knapp G. A refined method for the meta-analysis of controlled clinical trials with binary outcome. *Stat Med* 2001;20:3875–89.
35. Peters JL, Sutton AJ, Jones DR, *et al*. Contour-enhanced meta-analysis funnel plots help distinguish publication bias from other causes of asymmetry. *J Clin Epidemiol* 2008;61:991–6.
36. StataCorp. *Stata statistical software: release 14 [program]*. College Station, TX: StataCorp LP, 2015.
37. Cochrane Community. *Review Manager (RevMan) [Computer program]*. Version 5.3. Copenhagen: The Nordic Cochrane Centre, The Cochrane Collaboration, 2014.
38. Hawkins NM, Jhund PS, Pozzi A, *et al*. Severity of renal impairment in patients with heart failure and atrial fibrillation: implications for non-vitamin K antagonist oral anticoagulant dose adjustment. *Eur J Heart Fail* 2016;18:1162–71.
39. Hillege HL, Nitsch D, Pfeffer MA, *et al*. Renal function as a predictor of outcome in a broad spectrum of patients with heart failure. *Circulation* 2006;113:671–8.
40. Pfeffer MA, Swedberg K, Granger CB, *et al*. Effects of candesartan on mortality and morbidity in patients with chronic heart failure: the CHARM-Overall programme. *Lancet* 2003;362:759–66.
41. Leiter LA, Cefalu WT, de Bruin TWA, *et al*. Long-term maintenance of efficacy of dapagliflozin in patients with type 2 diabetes mellitus and cardiovascular disease. *Diabetes Obes Metab* 2016;18:766–74.
42. Cefalu WT, Leiter LA, de Bruin TWA, *et al*. Dapagliflozin's effects on glycemia and cardiovascular risk factors in high-risk patients with type 2 diabetes: a 24-week, multicenter, randomized, double-blind, placebo-controlled study with a 28-Week extension. *Diabetes Care* 2015;38:1218–27.
43. Leiter LA, Cefalu WT, de Bruin TWA, *et al*. Dapagliflozin added to usual care in individuals with type 2 diabetes mellitus with preexisting cardiovascular disease: a 24-week, multicenter, randomized, double-blind, placebo-controlled study with a 28-week extension. *J Am Geriatr Soc* 2014;62:1252–62.
44. Hou FF, Zhang X, Zhang GH, *et al*. Efficacy and safety of benazepril for advanced chronic renal insufficiency. *N Engl J Med* 2006;354:131–40.
45. Fassett RG, Robertson IK, Ball MJ, *et al*. Effect of atorvastatin on kidney function in chronic kidney disease: a randomised double-blind placebo-controlled trial. *Atherosclerosis* 2010;213:218–24.
46. Sakata Y, Shiba N, Takahashi J, *et al*. Clinical impacts of additive use of olmesartan in hypertensive patients with chronic heart failure: the supplemental benefit of an angiotensin receptor blocker in hypertensive patients with stable heart failure using olmesartan (support) trial. *Eur Heart J* 2015;36:915–23.
47. Sakata Y, Nochioka K, Miura M, *et al*. Supplemental benefit of an angiotensin receptor blocker in hypertensive patients with stable heart failure using olmesartan (SUPPORT) trial--rationale and design. *J Cardiol* 2013;62:31–6.
48. Kimura G, Kasahara M, Ueshima K, *et al*. Effects of atorvastatin on renal function in patients with dyslipidemia and chronic kidney disease: assessment of clinical usefulness in CKD patients with atorvastatin (ASUCA) trial. *Clin Exp Nephrol* 2017;21:417–24.
49. Management of Elevated Cholesterol in the Primary Prevention Group of Adult Japanese (MEGA) Study Group. Design and baseline characteristics of a study of primary prevention of coronary events with pravastatin among Japanese with mildly elevated cholesterol levels. *Circ J* 2004;68:860–7.
50. Nakamura H, Mizuno K, Ohashi Y, *et al*. Pravastatin and cardiovascular risk in moderate chronic kidney disease. *Atherosclerosis* 2009;206:512–7.
51. Nakamura H, Arakawa K, Itakura H, *et al*. Primary prevention of cardiovascular disease with pravastatin in Japan (MEGA study): a prospective randomised controlled trial. *Lancet* 2006;368:1155–63.
52. Torres VE, Abebe KZ, Chapman AB, *et al*. Angiotensin blockade in late autosomal dominant polycystic kidney disease. *N Engl J Med* 2014;371:2267–76.
53. Lewis EJ, Hunsicker LG, Clarke WR, *et al*. Renoprotective effect of the angiotensin-receptor antagonist irbesartan in patients with nephropathy due to type 2 diabetes. *N Engl J Med* 2001;345:851–60.
54. Evans M, Bain SC, Hogan S, *et al*. Irbesartan delays progression of nephropathy as measured by estimated glomerular filtration rate: post hoc analysis of the irbesartan diabetic nephropathy trial. *Nephrol Dial Transplant* 2012;27:2255–63.
55. Berl T, Hunsicker LG, Lewis JB, *et al*. Cardiovascular outcomes in the irbesartan diabetic nephropathy trial of patients with type 2 diabetes and overt nephropathy. *Ann Intern Med* 2003;138:542–9.

56. Lambers Heerspink HJ, Weldegiorgis M, Inker LA, *et al.* Estimated GFR decline as a surrogate end point for kidney failure: a post hoc analysis from the reduction of end points in non-insulin-dependent diabetes with the angiotensin II antagonist losartan (RENAAL) study and irbesartan diabetic nephropathy trial (IDNT). *Am J Kidney Dis* 2014;63:244–50.
57. Pfeffer MA, Braunwald E, Moyé LA, *et al.* Effect of captopril on mortality and morbidity in patients with left ventricular dysfunction after myocardial infarction. Results of the survival and ventricular enlargement trial. The SAVE Investigators. *N Engl J Med* 1992;327:669–77.
58. Downs JR, Clearfield M, Weis S, *et al.* Primary prevention of acute coronary events with lovastatin in men and women with average cholesterol levels: results of AFCAPS/TexCAPS. Air Force/Texas coronary atherosclerosis prevention study. *JAMA* 1998;279:1615–22.
59. Kendrick J, Shlipak MG, Targher G, *et al.* Effect of lovastatin on primary prevention of cardiovascular events in mild CKD and kidney function loss: a post hoc analysis of the Air Force/Texas coronary atherosclerosis prevention study. *Am J Kidney Dis* 2010;55:42–9.
60. Downs JR, Beere PA, Whitney E, *et al.* Design & rationale of the Air Force/Texas Coronary Atherosclerosis Prevention Study (AFCAPS/TexCAPS). *Am J Cardiol* 1997;80:287–93.
61. Robins SJ, Collins D, Wittes JT, *et al.* Relation of gemfibrozil treatment and lipid levels with major coronary events: VA-HIT: a randomized controlled trial. *JAMA* 2001;285:1585–91.
62. Tonelli M, Collins D, Robins S, *et al.* Effect of gemfibrozil on change in renal function in men with moderate chronic renal insufficiency and coronary disease. *Am J Kidney Dis* 2004;44:832–9.
63. Rubins HB, Robins SJ, Iwane MK, *et al.* Rationale and design of the Department of Veterans Affairs high-density lipoprotein cholesterol intervention trial (HIT) for secondary prevention of coronary artery disease in men with low high-density lipoprotein cholesterol and desirable low-density lipoprotein cholesterol. *Am J Cardiol* 1993;71:45–52.
64. Goraya N, Munoz-Maldonado Y, Simoni J. Treatment of metabolic acidosis in chronic kidney disease with fruits and vegetables but not sodium bicarbonate yields fewer adverse cardiovascular events after five-years follow up. *Circulation Conference: Resuscitation Science Symposium, ReSS*, 2017.
65. Goraya N, Simoni J, Jo C-H, *et al.* Treatment of metabolic acidosis in patients with stage 3 chronic kidney disease with fruits and vegetables or oral bicarbonate reduces urine angiotensinogen and preserves glomerular filtration rate. *Kidney Int* 2014;86:1031–8.
66. Bianchi S, Bigazzi R, Campese VM. Intensive versus conventional therapy to slow the progression of idiopathic glomerular diseases. *Am J Kidney Dis* 2010;55:671–81.
67. Asselbergs FW, Diercks GFH, Hillege HL, *et al.* Effects of foscipril and pravastatin on cardiovascular events in subjects with microalbuminuria. *Circulation* 2004;110:2809–16.
68. Huskey J, Lindenfeld J, Cook T, *et al.* Effect of simvastatin on kidney function loss in patients with coronary heart disease: findings from the Scandinavian simvastatin survival study (4S). *Atherosclerosis* 2009;205:202–6.
69. Pedersen TR, Wilhelmsen L, Faergeman O, *et al.* Follow-up study of patients randomized in the Scandinavian simvastatin survival study (4S) of cholesterol lowering. *Am J Cardiol* 2000;86:257–62.
70. Design and baseline results of the Scandinavian simvastatin survival study of patients with stable angina and/or previous myocardial infarction. *Am J Cardiol* 1993;71:393–400.
71. Sever PS, Dahlöf B, Poulter NR, *et al.* Prevention of coronary and stroke events with atorvastatin in hypertensive patients who have average or lower-than-average cholesterol concentrations, in the Anglo-Scandinavian Cardiac Outcomes Trial--Lipid Lowering Arm (ASCOT-LLA): a multicentre randomised controlled trial. *Lancet* 2003;361:1149–58.
72. Gupta A, Chang CL, Collier D. 758 the relationship between statin therapy and progression of renal damage among 10305 hypertensive patients randomised in the ASCOT-LIPID-LOWERING arm (LLA). *79th European Atherosclerosis Society Congress, EAS 2011*, Gothenburg Sweden, 2011:158–9.
73. Nanayakkara PWB, van Guldeker C, ter Wee PM, *et al.* Effect of a treatment strategy consisting of pravastatin, vitamin E, and homocysteine lowering on carotid intima-media thickness, endothelial function, and renal function in patients with mild to moderate chronic kidney disease: results from the anti-oxidant therapy in chronic renal insufficiency (ATIC) study. *Arch Intern Med* 2007;167:1262–70.
74. Tavazzi L, Maggioni AP, Marchioni R, *et al.* Effect of rosuvastatin in patients with chronic heart failure (the GISSI-HF trial): a randomised, double-blind, placebo-controlled trial. *Lancet* 2008;372:1231–9.
75. Tavazzi L, Tognoni G, Franzosi MG, *et al.* Rationale and design of the GISSI heart failure trial: a large trial to assess the effects of n-3 polyunsaturated fatty acids and rosuvastatin in symptomatic congestive heart failure. *Eur J Heart Fail* 2004;6:635–41.
76. Athyros VG, Mikhailidis DP, Liberopoulos EN, *et al.* Effect of statin treatment on renal function and serum uric acid levels and their relation to vascular events in patients with coronary heart disease and metabolic syndrome: a subgroup analysis of the Greek atorvastatin and coronary heart disease evaluation (GREACE) study. *Nephrol Dial Transplant* 2007;22:118–27.
77. Athyros VG, Papageorgiou AA, Mercouris BR, *et al.* Treatment with atorvastatin to the National Cholesterol Educational Program goal versus 'usual' care in secondary coronary heart disease prevention. The GREACE Atorvastatin and Coronary-heart-disease Evaluation (GREACE) study. *Curr Med Res Opin* 2002;18:220–8.
78. Ford I, Bezlyak V, Stott DJ, *et al.* Reduced glomerular filtration rate and its association with clinical outcome in older patients at risk of vascular events: secondary analysis. *PLoS Med* 2009;6:e16.
79. Patel A, MacMahon S, Chalmers J, *et al.* Effects of a fixed combination of perindopril and indapamide on macrovascular and microvascular outcomes in patients with type 2 diabetes mellitus (the advance trial): a randomised controlled trial. *Lancet* 2007;370:829–40.
80. Heerspink HJL, Ninomiya T, Perkovic V, *et al.* Effects of a fixed combination of perindopril and indapamide in patients with type 2 diabetes and chronic kidney disease. *Eur Heart J* 2010;31:2888–96.
81. Peters R, Beckett N, Poulter R, *et al.* Kidney function in the very elderly with hypertension: data from the hypertension in the very elderly (HYVET) trial. *Age Ageing* 2013;42:253–8.
82. Beckett NS, Peters R, Fletcher AE, *et al.* Treatment of hypertension in patients 80 years of age or older. *N Engl J Med* 2008;358:1887–98.
83. Bulpitt C, Fletcher A, Beckett N, *et al.* Hypertension in the very elderly trial (HYVET): protocol for the main trial. *Drugs Aging* 2001;18:151–64.
84. Ting R-D, Keech AC, Drury PL, *et al.* Benefits and safety of long-term fenofibrate therapy in people with type 2 diabetes and renal impairment: the field study. *Diabetes Care* 2012;35:218–25.
85. FIELD Study Investigators. The need for a large-scale trial of fibrates therapy in diabetes: the rationale and design of the Fenofibrate Intervention and Event Lowering in Diabetes (FIELD) study. [SRCTN64783481]. *Cardiovasc Diabetol* 2004;3:9.
86. Keech A, Simes RJ, Barter P, *et al.* Effects of long-term fenofibrate therapy on cardiovascular events in 9795 people with type 2 diabetes mellitus (the field study): randomised controlled trial. *Lancet* 2005;366:1849–61.
87. Zinman B, Wanner C, Lachin JM, *et al.* Empagliflozin, cardiovascular outcomes, and mortality in type 2 diabetes. *N Engl J Med* 2015;373:2117–28.
88. Wanner C, Inzucchi SE, Lachin JM, *et al.* Empagliflozin and progression of kidney disease in type 2 diabetes. *N Engl J Med* 2016;375:323–34.
89. Cornel JH, Bakris GL, Stevens SR, *et al.* Effect of sitagliptin on kidney function and respective cardiovascular outcomes in type 2 diabetes: outcomes from TECOS. *Diabetes Care* 2016;39:2304–10.
90. Green JB, Bethel MA, Armstrong PW, *et al.* Effect of sitagliptin on cardiovascular outcomes in type 2 diabetes. *N Engl J Med* 2015;373:232–42.
91. Zannad F, McMurray JJV, Krum H, *et al.* Eplerenone in patients with systolic heart failure and mild symptoms. *N Engl J Med* 2011;364:11–21.
92. Rossignol P, Dobre D, McMurray JJV, *et al.* Incidence, determinants, and prognostic significance of hyperkalemia and worsening renal function in patients with heart failure receiving the mineralocorticoid receptor antagonist eplerenone or placebo in addition to optimal medical therapy: results from the eplerenone in mild patients hospitalization and survival study in heart failure (EMPHASIS-HF). *Circ Heart Fail* 2014;7:51–8.
93. Brenner BM, Cooper ME, de Zeeuw D, *et al.* Effects of losartan on renal and cardiovascular outcomes in patients with type 2 diabetes and nephropathy. *N Engl J Med* 2001;345:861–9.
94. de Zeeuw D, Remuzzi G, Parving H-H, *et al.* Proteinuria, a target for renoprotection in patients with type 2 diabetic nephropathy: lessons from RENAAL. *Kidney Int* 2004;65:2309–20.
95. Kowey PR, Dickson TZ, Zhang Z, *et al.* Losartan and end-organ protection--lessons from the RENAAL study. *Clin Cardiol* 2005;28:136–42.
96. Winkelmayr WC, Zhang Z, Shahinfar S, *et al.* Efficacy and safety of angiotensin II receptor blockade in elderly patients with diabetes. *Diabetes Care* 2006;29:2210–7.

97. Brenner BM, Cooper ME, de Zeeuw D, *et al*. The losartan renal protection study—rationale, study design and baseline characteristics of RENAAL (Reduction of Endpoints in NIDDM with the Angiotensin II Antagonist Losartan). *J Renin Angiotensin Aldosterone Syst* 2000;1:328–35.
98. Pitt B, Pfeffer MA, Assmann SF, *et al*. Spironolactone for heart failure with preserved ejection fraction. *N Engl J Med* 2014;370:1383–92.
99. Crouse JR 3rd, Raichlen JS, Riley WA, *et al*. Effect of rosuvastatin on progression of carotid intima-media thickness in low-risk individuals with subclinical atherosclerosis: the METEOR trial. *JAMA* 2007;297:1344–53.
100. Shepherd J, Blauw GJ, Murphy MB, *et al*. The design of a prospective study of pravastatin in the elderly at risk (prosper). PROSPER Study Group. prospective study of pravastatin in the elderly at risk. *Am J Cardiol* 1999;84:1192–7.
101. Shepherd J, Blauw GJ, Murphy MB, *et al*. Pravastatin in elderly individuals at risk of vascular disease (prosper): a randomised controlled trial. *Lancet* 2002;360:1623–30.
102. Baigent C, Landray MJ, Reith C, *et al*. The effects of lowering LDL cholesterol with simvastatin plus ezetimibe in patients with chronic kidney disease (study of heart and renal protection): a randomised placebo-controlled trial. *Lancet* 2011;377:2181–92.
103. Haynes R, Lewis D, Emberson J, *et al*. Effects of lowering LDL cholesterol on progression of kidney disease. *J Am Soc Nephrol* 2014;25:1825–33.
104. Sharp Collaborative Group. Study of heart and renal protection (sharp): randomized trial to assess the effects of lowering low-density lipoprotein cholesterol among 9,438 patients with chronic kidney disease. *Am Heart J* 2010;160:e10:785–94.
105. Bode B, Stenlöf K, Harris S, *et al*. Long-term efficacy and safety of canagliflozin over 104 weeks in patients aged 55–80 years with type 2 diabetes. *Diabetes Obes Metab* 2015;17:294–303.
106. Bode B, Stenlöf K, Sullivan D, *et al*. Efficacy and safety of canagliflozin treatment in older subjects with type 2 diabetes mellitus: a randomized trial. *Hosp Pract (1995)* 2013;41:72–84.
107. Kohan DE, Fioretto P, Tang W, *et al*. Long-term study of patients with type 2 diabetes and moderate renal impairment shows that dapagliflozin reduces weight and blood pressure but does not improve glycemic control. *Kidney Int* 2014;85:962–71.
108. Palmer SC, Navaneethan SD, Craig JC, *et al*. Hmg CoA reductase inhibitors (statins) for people with chronic kidney disease not requiring dialysis. *Cochrane Database Syst Rev* 2014;(5):CD007784.
109. Zhang X, Xiang C, Zhou Y-H, *et al*. Effect of statins on cardiovascular events in patients with mild to moderate chronic kidney disease: a systematic review and meta-analysis of randomized clinical trials. *BMC Cardiovasc Disord* 2014;14:19.
110. Herrington W, Emberson J, Mihaylova B, *et al*. Impact of renal function on the effects of LDL cholesterol lowering with statin-based regimens: a meta-analysis of individual participant data from 28 randomised trials. *Lancet Diabetes Endocrinol* 2016;4:829–39.