

# Hypomethylation and over-expression of the beta isoform of BLIMP1 is Induced by Epstein-Barr virus infection of B Cells; potential implications for the pathogenesis of EBV-associated lymphomas

Vrzalikova, Katerina; Leonard, Sarah; Fan, Yichao; Bell, Andrew; Vockerodt, Martina; Flodr, Patrik; Wright, Kenneth L.; Rowe, Martin; Tao, Qian; Murray, Paul

DOI:  
[10.3390/pathogens1020083](https://doi.org/10.3390/pathogens1020083)

License:  
Creative Commons: Attribution (CC BY)

*Document Version*  
Publisher's PDF, also known as Version of record

*Citation for published version (Harvard):*  
Vrzalikova, K, Leonard, S, Fan, Y, Bell, A, Vockerodt, M, Flodr, P, Wright, KL, Rowe, M, Tao, Q & Murray, P 2012, 'Hypomethylation and over-expression of the beta isoform of BLIMP1 is Induced by Epstein-Barr virus infection of B Cells; potential implications for the pathogenesis of EBV-associated lymphomas', *Pathogens*, vol. 1, no. 2, pp. 83-101. <https://doi.org/10.3390/pathogens1020083>

[Link to publication on Research at Birmingham portal](#)

## General rights

Unless a licence is specified above, all rights (including copyright and moral rights) in this document are retained by the authors and/or the copyright holders. The express permission of the copyright holder must be obtained for any use of this material other than for purposes permitted by law.

- Users may freely distribute the URL that is used to identify this publication.
- Users may download and/or print one copy of the publication from the University of Birmingham research portal for the purpose of private study or non-commercial research.
- User may use extracts from the document in line with the concept of 'fair dealing' under the Copyright, Designs and Patents Act 1988 (?)
- Users may not further distribute the material nor use it for the purposes of commercial gain.

Where a licence is displayed above, please note the terms and conditions of the licence govern your use of this document.

When citing, please reference the published version.

## Take down policy

While the University of Birmingham exercises care and attention in making items available there are rare occasions when an item has been uploaded in error or has been deemed to be commercially or otherwise sensitive.

If you believe that this is the case for this document, please contact [UBIRA@lists.bham.ac.uk](mailto:UBIRA@lists.bham.ac.uk) providing details and we will remove access to the work immediately and investigate.

Article

## Hypomethylation and Over-Expression of the Beta Isoform of BLIMP1 is Induced by Epstein-Barr Virus Infection of B Cells; Potential Implications for the Pathogenesis of EBV-Associated Lymphomas

Katerina Vrzalikova<sup>1,2,†,\*</sup>, Sarah Leonard<sup>1,†</sup>, Yichao Fan<sup>3</sup>, Andrew Bell<sup>1</sup>, Martina Vockerodt<sup>1</sup>, Patrik Flodr<sup>2</sup>, Kenneth L. Wright<sup>4</sup>, Martin Rowe<sup>1</sup>, Qian Tao<sup>3</sup> and Paul G. Murray<sup>1,2</sup>

<sup>1</sup> School of Cancer Sciences, University of Birmingham, B15 2TT, UK; E-Mails: leonarSM@adf.bham.ac.uk (S.L.); bellai@adf.bham.ac.uk (A.B.); vockerom@adf.bham.ac.uk (M.V.); rowem@adf.bham.ac.uk (M.R.); p.g.murray@bham.ac.uk (P.G.M.)

<sup>2</sup> Laboratory of Molecular Pathology, Department of Pathology, and Institute of Molecular and Translation Medicine, Faculty of Medicine and Dentistry, Palacky University, Olomouc, 779 00, Czech Republic; E-Mails: flodrpatrik@yahoo.co.uk (P.F.)

<sup>3</sup> The Cancer Epigenetics Laboratory, Sir YK Pao Center for Cancer, Department of Clinical Oncology, Hong Kong Cancer Institute and Li Ka Shing Institute of Health Sciences, The Chinese University of Hong Kong, 999077, Hong Kong; E-Mails: qtao@clo.cuhk.edu.hk (Q.T.); qtao@clo.cuhk.edu.hk (Y.F.)

<sup>4</sup> H. Lee Moffitt Cancer Center, 12902 Magnolia Drive, MRC-4 East, Tampa, FL 33612, USA; E-Mail: ken.wright@moffitt.org (K.L.W.)

† These authors contributed equally to this work.

\* Author to whom correspondence should be addressed; E-Mail: k.vrzalikova@bham.ac.uk (K.V.)  
Tel.: +44-121-414-6924; Fax: +44-121-414-4486.

Received: 15 August 2012; in revised form: 19 September 2012 / Accepted: 24 September 2012 /  
Published: 8 October 2012

---

**Abstract:** B-lymphocyte-induced maturation protein 1 (BLIMP1) exists as two major isoforms,  $\alpha$  and  $\beta$ , which arise from alternate promoters. Inactivation of the full length BLIMP1 $\alpha$  isoform is thought to contribute to B cell lymphomagenesis by blocking post-germinal centre (GC) B cell differentiation. In contrast, the shorter  $\beta$  isoform is functionally impaired and over-expressed in several haematological malignancies,

including diffuse large B cell lymphomas (DLBCL). We have studied the influence on BLIMP1 $\beta$  expression of the Epstein-Barr virus (EBV), a human herpesvirus that is implicated in the pathogenesis of several GC-derived lymphomas, including a subset of DLBCL and Hodgkin's lymphoma (HL). We show that BLIMP1 $\beta$  expression is increased following the EBV infection of normal human tonsillar GC B cells. We also show that this change in expression is accompanied by hypomethylation of the BLIMP1 $\beta$ -specific promoter. Furthermore, we confirmed previous reports that the BLIMP1 $\beta$  promoter is hypomethylated in DLBCL cell lines and show for the first time that BLIMP1 $\beta$  is hypomethylated in the Hodgkin/Reed-Sternberg (HRS) cells of HL. Our results provide evidence in support of a role for BLIMP1 $\beta$  in the pathogenesis of EBV-associated B cell lymphomas.

**Keywords:** BLIMP1; Epstein-Barr virus; hypomethylation; Hodgkin's lymphoma

---

## 1. Introduction

The PRDM1 gene encodes two major isoforms, designated BLIMP1 $\alpha$  and BLIMP1 $\beta$ , which arise from alternate promoters [1]. The full-length BLIMP1 $\alpha$  protein orchestrates plasma cell differentiation by repressing genetic programs associated with the germinal centre (GC) stages, while at the same time activating those programs associated with plasma cell functions [2,3]. In contrast, BLIMP1 $\beta$  is transcribed from a promoter and exon located upstream of exon 4 of the PRDM1 gene [1]. The BLIMP1 $\beta$  protein lacks the first 101 amino acids of BLIMP1 $\alpha$  and instead contains three amino acids fused to amino acids 102–789 of BLIMP1 $\alpha$ . BLIMP1 $\beta$ , which lacks most of the positive regulatory (PR) domain and N-terminal acidic region, has a diminished capacity to repress target genes [1]. Since BLIMP1 $\beta$  contains the DNA-binding domain but bears a disrupted regulatory domain it has been suggested that it behaves as an inhibitor of BLIMP1 $\alpha$  [1].

Other members of the PRDM family, including PRDM2 (RIZ), PRDM3 (MDS1-EVII) and PRDM16 (MEL1) can also express a full-length protein containing the PR domain as well as a truncated protein missing the PR domain [4]. The balance of expression of these different PRDM isoforms is disrupted in many cancers and results from both the over-expression of the truncated proteins as well as the loss of expression of the full-length proteins [5–12]. For example, RIZ1, the full-length product of PRDM2, is a tumour suppressor protein because it demonstrates a loss of function in many types of human cancers with genomic deletions or point mutations and because RIZ1-deficient mice have been shown to develop diffuse large B cell lymphomas (DLBCL) [5–7]. In contrast, RIZ2, which lacks the PR domain, is over-expressed in breast cancer and in acute lymphoblastic leukaemias [8,9]. The transcript of the long form of the *MDS1-EVII/PRDM3* gene is expressed at very low levels in leukaemia cells, whereas the short form of the *EVII* gene is over-expressed in murine leukaemia cells with viral integration in the *EVII* locus and in human leukaemias with chromosome 3q abnormalities [10–15]. The human *MEL1/PRDM16* also has two alternative protein forms, a long form, MEL1, and a short form, MEL1S. The latter is over-expressed in leukaemia cells carrying the t(1;3) translocation [16,17].

Inactivation of the PRDM1 gene leading to loss of BLIMP1 $\alpha$  function occurs in a subset of DLBCL of the activated B-cell type and is believed to contribute to lymphomagenesis by blocking post-GC B cell differentiation [18,19]. In contrast, the over-expression of BLIMP1 $\beta$  has been reported in multiple myeloma, DLBCL and in some T cell lymphomas [1,20–22]. BLIMP1 $\beta$  over-expression is associated with advanced Ann Arbor stage and a high-risk International Prognostic Index in T cell lymphomas and with shorter patient survival in both DLBCL and T cell lymphoma patients [21,22]. In DLBCL, the increased BLIMP1 $\beta$  mRNA levels are associated with hypomethylation of the BLIMP1 $\beta$  promoter [23]. In both B- and T-cell lymphomas, BLIMP1 $\beta$  expression might also be associated with *in vitro* resistance to chemotherapeutic agents [21,22].

The Epstein-Barr virus (EBV) is a human herpesvirus that has been shown to be involved in the pathogenesis of several GC-derived lymphomas, including classical Hodgkin's lymphoma (HL) and more recently a subset of DLBCL [24,25]. A previous study reported that EBV infection of myeloma cells decreased BLIMP1 expression, but this study was not able to differentiate between the different isoforms [26]. Recently we showed that EBV infection of GC B cells resulted in the down-regulation of the BLIMP1 $\alpha$  isoform [27]. Here we have investigated the influence of EBV on the expression and methylation status of the BLIMP1 $\beta$  isoform.

## 2. Results and Discussion

### 2.1. Induction of BLIMP1 $\beta$ Expression Following EBV Infection of Primary Human B cells

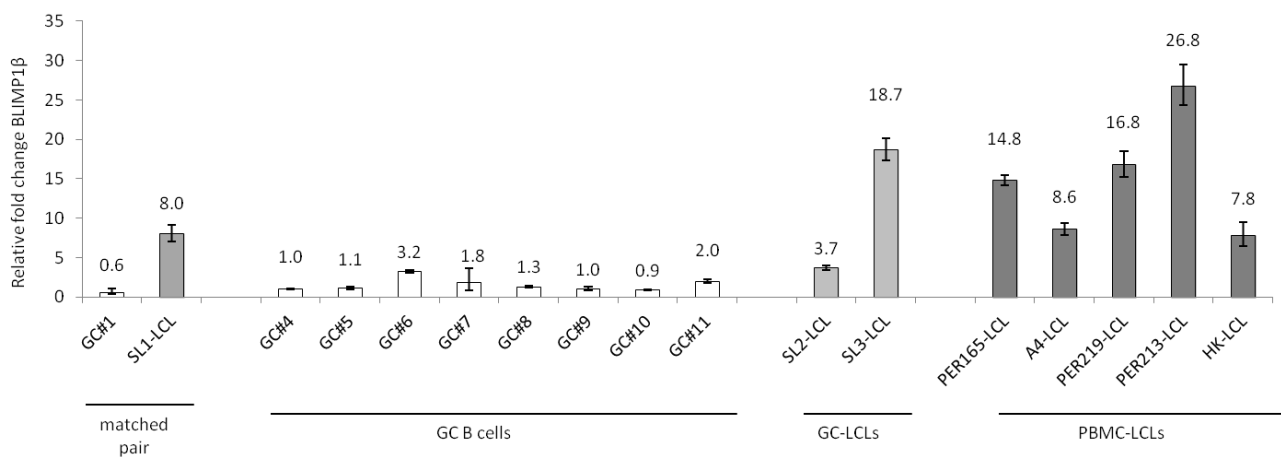
We first explored the impact of EBV infection on BLIMP1 $\beta$  expression in B cells. We studied BLIMP1 $\beta$  expression in three LCLs derived from GC B cells as well as in five LCLs established by the PBMCs of healthy donors. The generation of the GC-derived LCLs has been described previously [28]; these LCLs were examined six weeks following infection, at which time these cells were shown to be polyclonal in nature and to express the typical Latency III pattern of EBV viral genes [28]. We found that when compared to normal un-infected GC B cells, the LCLs showed increased expression of BLIMP1 $\beta$  mRNA (Figure 1A). Because we had previously shown that EBV infection of B cells was accompanied by the decreased expression of the BLIMP1 $\alpha$  isoform [27], we next compared the relative levels of each isoform in GC B cells and GC-derived LCLs. Figure 1B shows that EBV infection of GC B cells dramatically reduced the BLIMP1 $\alpha$ :BLIMP1 $\beta$  ratio. For example, in the matched pair, GC#1 and SL1-LCL, the BLIMP1 $\alpha$ :BLIMP1 $\beta$  ratio fell from 25 (1/0.04) in normal GC B cells to 1.47 (1/0.68) in EBV-transformed GC B cells.

We then used an antibody that recognizes both BLIMP1 $\alpha$  and BLIMP1 $\beta$  isoforms to study BLIMP1 $\beta$  protein expression in these samples by immunoblotting. Figure 1C shows that while normal GC B cells expressed only the BLIMP1 $\alpha$  isoform, the GC B cell-derived LCLs expressed both BLIMP1 $\alpha$  and BLIMP1 $\beta$  protein. The BLIMP1 $\beta$  protein consistently ran at a slightly higher molecular weight than in U266 cells which we used as a positive control. In U266 cells and in one LCL, we also observed a slightly heavier band running above the BLIMP1 $\alpha$  isoforms (marked with \*); this could represent the recently described sumoylated form of BLIMP1 [29,30]. Shorter exposure of these blots also revealed that whereas the BLIMP1 $\alpha$  protein separated as a single sharp band in GC B cells, it appeared as a weaker double band in the GC-derived LCLs (data not shown). A further band migrating

at approximately 88 kDa was also seen in the GC-derived LCLs and U266 cells, but not in GC B cells. This is likely to correspond to the recently reported BLIMP1 $\Delta$ 6 isoform, which migrates at this molecular weight [31,32]. We also studied BLIMP1 $\beta$  protein expression in four LCLs established from the PBMCs of healthy donors. Figure 1D shows that BLIMP1 $\beta$  was detectable in all the studied LCLs. Although BLIMP1 $\beta$  protein levels varied between these PBMCs-derived LCLs, they correlated well with the mRNA levels (shown in Figure 1A). The BLIMP1 $\beta$  protein was not detectable in normal B cells isolated from peripheral blood (data not shown).

**Figure 1.** Induction of B-lymphocyte-induced maturation protein 1 (BLIMP1 $\beta$ ) expression following Epstein-Barr virus (EBV) infection of primary human B cells.

A



B

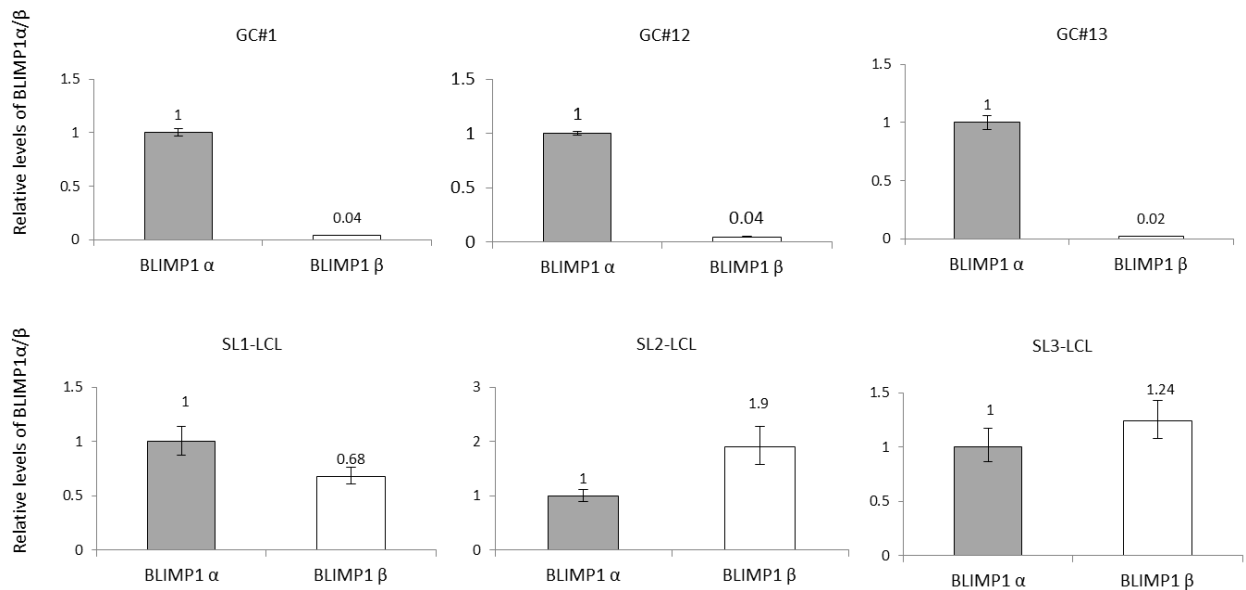
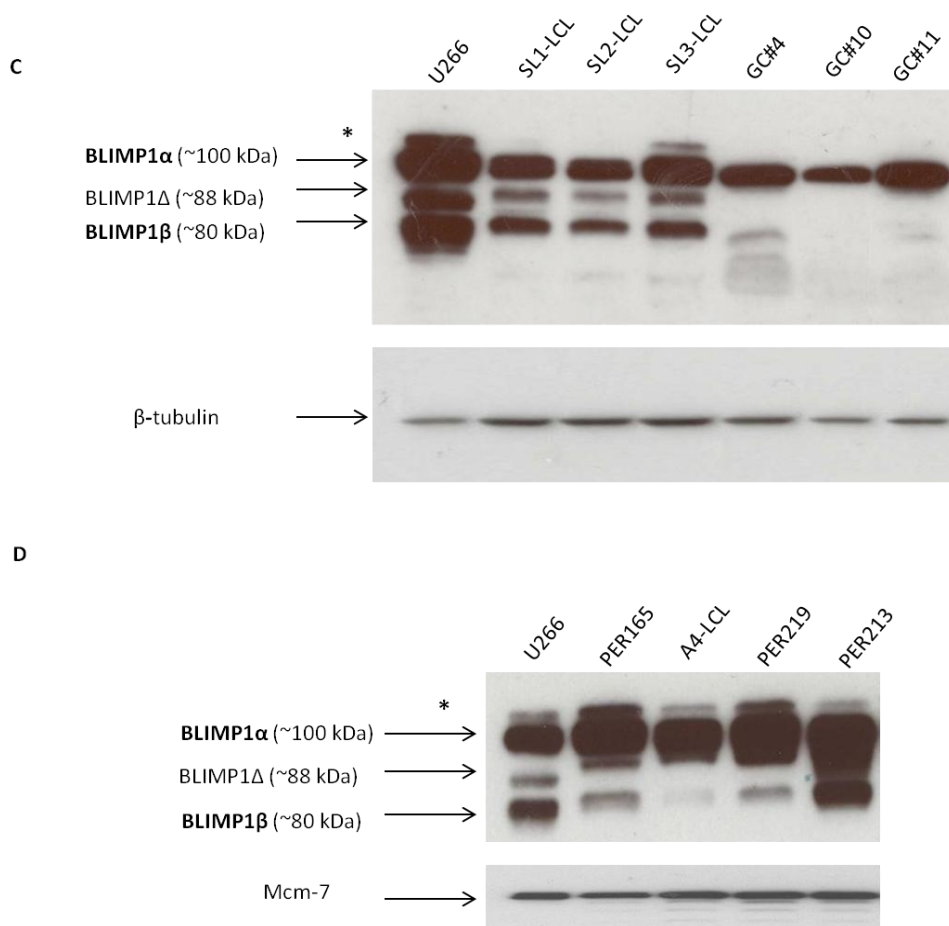


Figure 1. Cont.

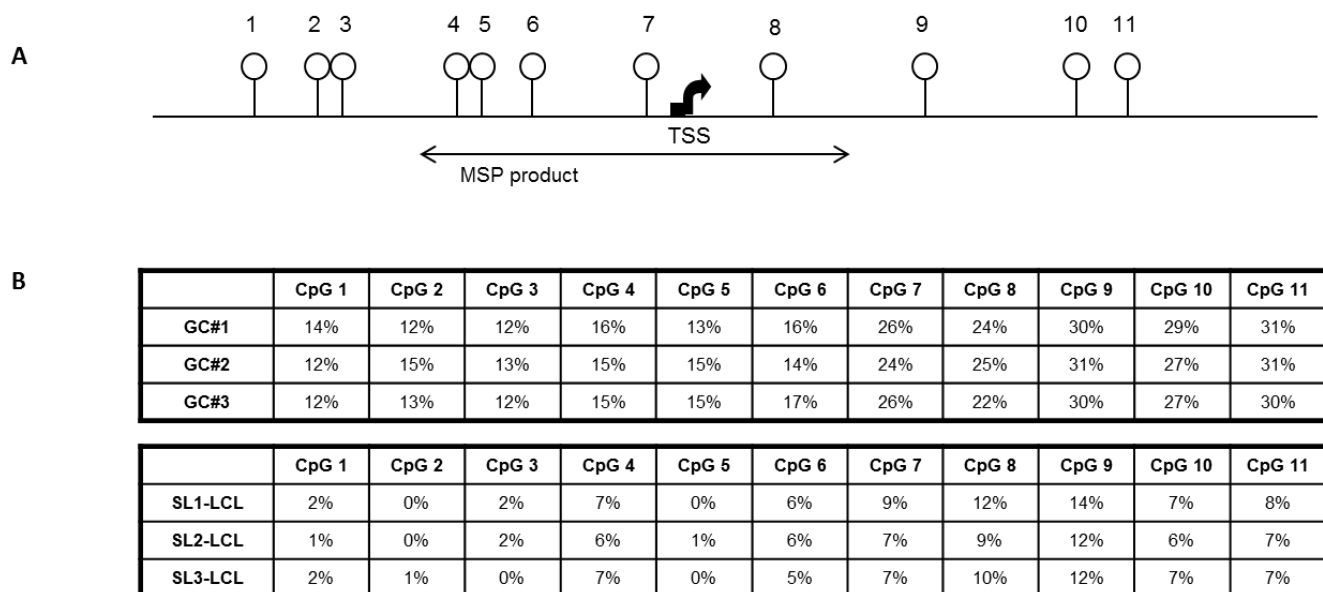


(A) Q-RT-PCR analysis shows increased expression of the BLIMP1 $\beta$  isoform in three lymphoblastoid cell lines derived from GC B cells (SL1-3-LCL) and in five LCLs established from PBMCs, compared to normal GC B cells isolated from nine donors. SL1-LCL and GC#1 are a matched pair from the same patient. (B) Relative levels of BLIMP1 $\alpha$  and BLIMP1 $\beta$  isoforms in GC B cells and GC B cell-derived LCLs; the BLIMP1 $\alpha$ :BLIMP1 $\beta$  ratio is decreased in the LCLs. (C) Immunoblotting revealed that while normal GC B cells expressed only the BLIMP1 $\alpha$  isoform, all GC B cells-derived LCLs expressed BLIMP1 $\beta$  as well as the presumed BLIMP1 $\Delta$  isoform. A slightly heavier band running above the BLIMP1 $\alpha$  isoforms was observed in U266 and SL3-LCL (marked with \*); possibly representing the recently described sumoylated form of BLIMP1 $\alpha$ . U266 cells were used as a positive control. (D) LCLs derived from PBMCs expressed variable levels of BLIMP1 $\beta$  protein.

## 2.2. The BLIMP1 $\beta$ -specific Promoter is Hypomethylated in EBV-infected Human Germinal Center B cells

Because it has recently been shown that the increased expression of BLIMP1 $\beta$  observed in DLBCL is accompanied by the hypo-methylation of the BLIMP1 $\beta$ -specific promoter [23], we used pyrosequencing to investigate the methylation status of BLIMP1 $\beta$  in EBV-infected GC B cells. Figure 2 shows that relative to normal GC B cells, all 11 CpGs within the BLIMP1 $\beta$ -specific promoter were hypomethylated in the GC-derived LCLs. We conclude that the over-expression of BLIMP1 $\beta$  in EBV-infected primary human GC B cells is accompanied by the hypomethylation of the BLIMP1 $\beta$ -specific promoter.

**Figure 2.** The BLIMP1 $\beta$ -specific promoter is hypomethylated in EBV-infected primary human germinal center B cells.



(A) Schematic of part of the BLIMP1 $\beta$ -specific promoter analysed by pyrosequencing. The transcriptional start site (TSS) is indicated with an arrow and the analysed CpG sites are numbered 1–11. The promoter region analyzed using methylation specific PCR (MSP) is indicated with an arrow which overlapped CpG 4–8. (B) Pyrosequencing reveals that compared to GC B cells, the BLIMP1 $\beta$ -specific promoter is hypomethylated in the GC-derived LCLs.

### 2.3. Hypomethylation and Increased Expression of BLIMP1 $\beta$ in Hodgkin's Lymphoma

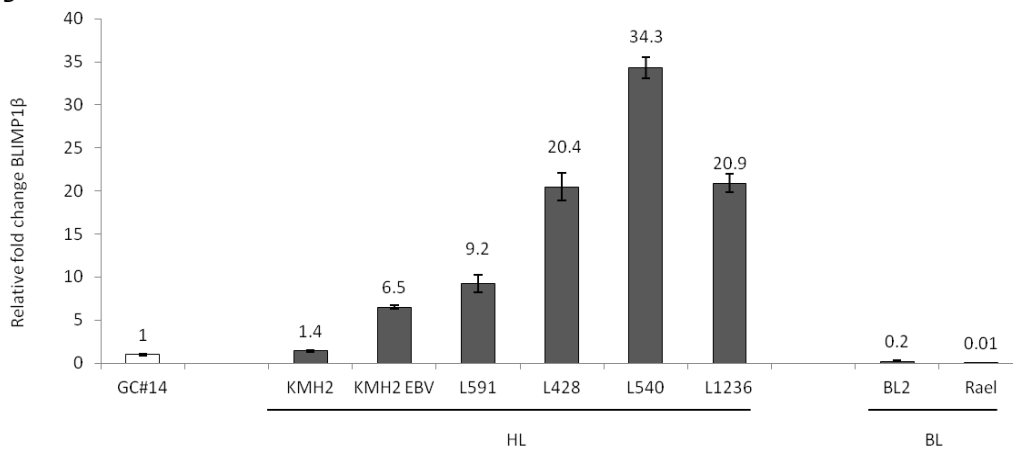
We next used pyrosequencing to investigate the methylation status of the BLIMP1 $\beta$ -specific promoter in HL-derived cell lines. Figure 3A shows that the BLIMP1 $\beta$ -specific promoter was hypomethylated in the three HL cell lines examined (L591, L428, KMH2). We used MSP to confirm loss of methylation of the BLIMP1 $\beta$ -specific promoter in these three HL cell lines as well as in a further two HL cell lines (L540 and L1236) and in several DLBCL lines and T cell lymphoma-derived lines (Supplementary Figure 1). We observed that in the HL cell lines, the hypomethylation of BLIMP1 $\beta$  was accompanied by an increase in BLIMP1 $\beta$  mRNA and in most cases by an increase in BLIMP1 $\beta$  protein (Figure 3B, 3C). Although we found hypomethylation of BLIMP1 $\beta$  in KMH2 cells, these cells showed only low levels of BLIMP1 $\beta$  mRNA and barely detectable BLIMP1 $\beta$  protein (Figure 3B and 3C), suggesting that the hypomethylation of BLIMP1 $\beta$  is alone insufficient for BLIMP1 $\beta$  protein expression in this cell line. Furthermore although EBV infection of KMH2 cells increased BLIMP1 $\beta$  mRNA levels, there was no discernible increase in BLIMP1 $\beta$  protein. We also found that the Burkitt lymphoma cell lines BL2 and Rael did not express BLIMP1 $\beta$  mRNA (Figure 3B). Consistent with this, we found the BLIMP1 $\beta$  isoform to be methylated in Rael cells (Supplementary Figure 1).

**Figure 3.** Hypomethylation of BLIMP1 $\beta$  in Hodgkin’s lymphoma.

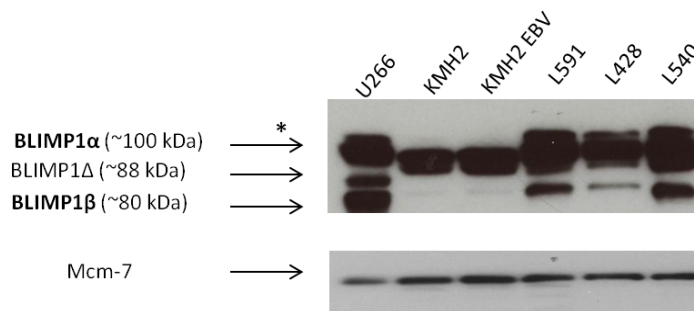
A

	CpG 1	CpG 2	CpG 3	CpG 4	CpG 5	CpG 6	CpG 7	CpG 8	CpG 9	CpG 10	CpG 11
<b>KMH2</b>	0%	0%	3%	0%	4%	0%	0%	9%	5%	4%	0%
<b>L591</b>	0%	2%	0%	5%	0%	4%	9%	2%	7%	4%	0%
<b>L428</b>	3%	0%	0%	5%	0%	5%	0%	0%	3%	3%	0%
<b>UC</b>	7%	8%	4%	10%	1%	2%	10%	7%	7%	6%	7%
<b>MC</b>	92%	98%	94%	90%	87%	91%	90%	95%	96%	99%	97%

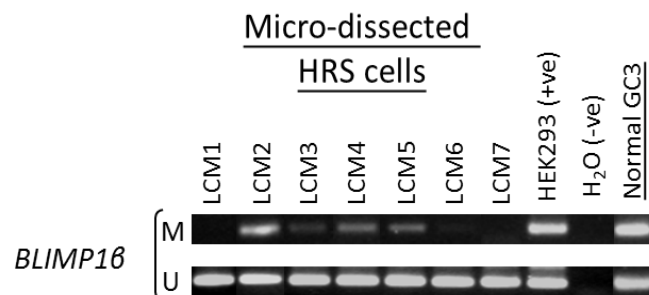
B



C



D



(A) Pyrosequencing reveals that compared to GC B cells (Figure 2B), the BLIMP1 $\beta$ -specific promoter is hypomethylated in representative HL-derived cell lines (KMH2, L591, L428). Results from un-methylated (UC) and methylated controls (MC) are included. (B) and (C) Detection of BLIMP1 $\beta$  mRNA and protein in HL cell lines. (D) Nested MSP analysis shows that the BLIMP1 $\beta$  promoter is hypo-methylated in micro-dissected HRS cells in six of seven cases. Both methylated and un-methylated bands were detected in normal GC cells (GC3) micro-dissected from lymph nodes. HEK293 cells were used as a positive control for both MSP and USP.



Finally, we examined the methylation status of the BLIMP1 $\beta$ -specific promoter in primary HRS cells which we micro-dissected from seven cases of HL. We used MSP for this analysis because conventional pyrosequencing is not sufficiently sensitive to detect methylation in small numbers of microdissected cells. Figure 3D shows that the BLIMP1 $\beta$  promoter was hypo-methylated in HRS cells in six of seven cases. Both methylated and un-methylated bands were detected in normal GC B cells micro-dissected from reactive lymph nodes. However, it should be noted that we observed that the BLIMP1 $\beta$  promoter was hypomethylated in HRS cells from both EBV-positive and EBV-negative cases of HL (Supplementary Table 3).

#### 2.4. Discussion of Results

Plasma cell differentiation is regulated by the coordinated expression of a number of transcription factors. Among these is BLIMP1, which can exist as two major isoforms, designated BLIMP1 $\alpha$  and BLIMP1 $\beta$  [1]. BLIMP1 $\alpha$  is essential for plasma cell differentiation because it extinguishes the gene-expression program of germinal center B cells, while at the same time inducing genes required for terminal differentiation [2,3]. In contrast, the truncated BLIMP1 $\beta$  protein has a functional DNA-binding domain but contains a disrupted regulatory domain [1]. In a previous study we reported that EBV could down-regulate BLIMP1 $\alpha$  expression in primary human GC B cells [27]. In the present study, we show that EBV infection of primary human GC B cells is followed by the increased expression of BLIMP1 $\beta$ . Although we previously showed that the EBV-encoded LMP1 was sufficient to down-regulate BLIMP1 $\alpha$  in GC B cells, we found that this viral gene does not up-regulate BLIMP1 $\beta$  in these cells (data not shown).

The up-regulation of BLIMP1 $\beta$  in EBV-infected B cells could be of functional importance. Other truncated PRDM family members when over-expressed can act as inhibitors of their respective full-length isoform. For example, the effects of MDS1-EV11, a PR domain containing form of the MDS1-EV11 gene, can be reversed by over-expressing EV11, the PR lacking isoform [11]. Furthermore, EV11 has been shown to repress TGF- $\beta$  signaling, through interaction with Smad3, while MDS1-EV11 augments the response to the growth inhibitory effect of TGF- $\beta$  [12–15]. Moreover, the truncated form of the PRDM2 gene (RIZ2), which lacks the PR domain, has been shown to inhibit trans-activation activity of the oestrogen receptor by RIZ1, the full length product of PRDM2 [33].

We observed that the up-regulation of BLIMP1 $\beta$  was accompanied by reduced expression of BLIMP1 $\alpha$  resulting in similar levels of expression of these two isoforms in EBV infected GC-derived cells. BLIMP1 $\beta$  has been shown to have only 20% of the transcriptional repressive activity of BLIMP1 $\alpha$  and can form hetero-dimers with BLIMP1 $\alpha$  [1]. Therefore, we suppose that BLIMP1 $\beta$  may counteract the ability of BLIMP1 $\alpha$  to drive plasma cell differentiation and in turn prevent induction of the EBV lytic cycle. This could be important for the subsequent development of EBV-associated lymphomas because viral replication usually leads to cell death, an event which is presumably incompatible with lymphomagenesis.

Apart from the up-regulation of BLIMP1 $\beta$ , additional mechanisms might contribute to the inactivation of BLIMP1 $\alpha$ . Our immunoblotting analysis revealed the presence of a slightly heavier protein running above the BLIMP1 $\alpha$  isoforms in U266 cells and in several of the LCLs. This is likely to represent the recently described sumoylated form of BLIMP1 $\alpha$ , which is rapidly degraded and could

be impaired in its ability to induce plasma cell differentiation [29,30]. We also observed an intermediate band running between BLIMP1 $\alpha$  and BLIMP1 $\beta$  which most likely corresponds to the BLIMP1 $\Delta$  isoform created by an alternative splicing of *PRDM1* exon 6 in humans or exon 7 in mice [31,32,34]. The resulting BLIMP1 $\Delta$  protein lacks the first 3 zinc fingers and is therefore predicted to be non-functional [34]. However, despite having impaired DNA binding activity, the BLIMP1 $\Delta$  form was shown to interfere with the activity of full-length BLIMP1 $\alpha$ , presumably by forming non-functional heterodimers [31].

We also observed that the increased expression of BLIMP1 $\beta$  in EBV-transformed GC B cells was accompanied by hypomethylation of the BLIMP1 $\beta$ -specific promoter. These results are consistent with a previous report showing that in DLBCL, increased BLIMP1 $\beta$  mRNA levels are associated with BLIMP1 $\beta$  promoter hypomethylation [23], and also with our previous report that EBV infection of GC B cells is followed by the widespread hypomethylation of cellular genes [28]. In the latter study we showed that EBV infection of GC B cells was followed shortly afterwards by the up-regulation of the DNA methyltransferase, DNMT3A and by the down-regulation of DNMT3B and DNMT1, a pattern of expression which was recapitulated in HL [28]. It remains to be established which, if any, of the DNMTs are involved in regulating the BLIMP1 $\beta$ -specific promoter in EBV-transformed B cells. However, we also found that in HL cell lines, BLIMP1 $\beta$  promoter hypomethylation was not always accompanied by BLIMP1 $\beta$  protein expression suggesting that in some cases promoter hypomethylation alone may not be sufficient for protein expression.

EBV is implicated in the pathogenesis of several GC-derived lymphomas, which include HL and a subset of DLBCL of the elderly and immunosuppressed [24,25]. In the present study, we not only confirmed previous reports that the BLIMP1 $\beta$  promoter is hypomethylated in DLBCL cell lines [23] but we also showed that BLIMP1 $\beta$  is frequently hypomethylated in the HRS cells of HL. Immunohistochemistry has been used previously to show that BLIMP1 protein is expressed in HRS cells in some cases of HL [35–38]. Although, it would be of interest to know which BLIMP1 isoform is expressed in primary HRS cells, an antibody, which can differentiate between the different BLIMP1 isoforms is not available at the present time.

We observed BLIMP1 $\beta$  promoter hypomethylation in HRS cells from both EBV-positive and EBV-negative cases of HL. These data suggest that the over-expression of BLIMP1 $\beta$  could be involved in the pathogenesis of both EBV-positive and EBV-negative tumours; BLIMP1 $\beta$  might be required for the arrest of terminal differentiation which is generally regarded as an important component in the pathogenesis of most, if not all, GC-derived B cell lymphomas. However, an alternative possibility is that the induction of BLIMP1 $\beta$  expression is a tumor- or cell cycle-related phenomenon and occurs independently of EBV infection in HRS cells. Further studies are required to determine if and how BLIMP1 $\beta$  contributes to B cell lymphomagenesis and also to identify the mechanisms responsible for the regulation of BLIMP1 $\beta$  hypomethylation and expression in Hodgkin's lymphoma.

### 3. Experimental Section

#### 3.1. Cells

The GC B cells were obtained from patients undergoing routine tonsillectomy. The peripheral blood mononuclear cells were obtained from healthy volunteers. LCLs were established by infecting tonsillar GC B cells isolated from three separate donors with 2089 wild type EBV [28] and are referred to throughout as SL1-LCL, SL2-LCL, and SL3-LCL. LCLs derived from peripheral blood mononuclear B cells (PBMCs) PER213-LCL, PER219-LCL, PER165-LCL, A4-LCL, HK-LCL were established using the reference EBV strain B95.8 and were a gift of Dr Heather Long and Dr Nikki Smith (University of Birmingham, United Kingdom). KMH2, L428, HDLM2, HD-My-Z, L1236, L540 are EBV-negative HL cell lines [39–44]. L591 is EBV-positive HL cell line [45]. KMH2 EBV is derived from EBV-negative KMH2 cells infected with Akata-derived recombinant virus and maintained under geneticin selection [24]. BL2, CA46 and BJAB are EBV-negative BL cell lines [46–48]. Rael, Raji, Ag876 and Namalwa are EBV-positive BL cell lines [49–52]. OCI-Ly1, 3, 7, 8, and-18 are EBV-negative DLBCL lines [53]. OCI-Ly17 and Oci-Ly13.2 are EBV-negative T cell lymphoma lines [53]. U266 are multiple myeloma cells which served as a positive control for BLIMP1 expression [54]. All cell lines were cultured at 37 °C in 5% CO<sub>2</sub> in RPMI1640 growth media supplemented with 10% foetal calf serum, 2mM L-glutamine and 1% penicillin-streptomycin solution.

#### 3.2. Reverse-Transcriptase-PCR

RNA was extracted using RNeasy Mini Kit or Micro Kit including removal of genomic DNA with RNase-Free DNase Set (QIAGEN). cDNA was generated in a reaction consisting of 400 ng of RNA, 250 ng of random primers (Promega), 10 mM dNTP Mix (Roche Diagnostics) and SuperScript® III Reverse Transcriptase (Invitrogen) following the protocol supplied by the manufacturer. If required, cDNA was purified using GenElute™ PCR Clean-Up kit (Sigma-Aldrich).

#### 3.3. Quantitative PCR

All real-time PCR assays were performed using an ABI Prism 7700 sequence detection system (Applied Biosystems). A final reaction volume of 25 µL contained 1× TaqMan universal PCR mastermix (Applied Biosystems), 2.5–25.0 pmol primers, 5 pmol probe, 1.5 µL of house-keeping assay and 5 µL cDNA (equivalent to required ng input of RNA). Thermal-cycling conditions were: 2 minutes at 50 °C, 12 minutes at 95 °C and 40–50 rounds of 15 seconds at 95 °C and 1 minute at 60 °C. All test samples were run in triplicate and template-negative reactions served as controls. The probe targeting BLIMP1β isoform was published elsewhere [20], but for our study it was re-labelled with minor groove binder (MGB™) reporter dye at the 5' end and non-fluorescent quencher (NFQ) at the 3' end and purchased from Applied Biosystems. All other real-time PCRs were performed using commercially available assays (Supplementary Table 1). The 2-Delta-Delta CT method was used to quantify expression relative to the housekeeping control. The normalized values were expressed relative to the reference sample, which was set to a relative quantity value of 1 [55].

### 3.4. Bisulphite Modification and Pyrosequencing

Genomic DNA (500 ng) was bisulphite converted using the EZ DNA methylation kit (Zymo Research). All pyrosequencing primers were designed using Biotage PSQ primer design software. Biotinylated, non-biotinylated and sequencing primers are listed in Supplementary Table 2. The PCR was performed in a total volume of 50  $\mu$ L using 25  $\mu$ L hotstart taq master mix (Thermo Scientific), 5 pmol biotinylated primer, 10 pmol non-biotinylated primer and 10  $\mu$ L bisulphite modified DNA. The pyrosequencing reactions were performed on a Pyromark ID system (Biotage) and analysed using Pyro Q-CpG software (Biotage). 100ng unmethylated control (UC) and methylated control (MC) DNA (Millipore) was bisulphite modified and run with each pyrosequencing reaction.

### 3.5. Methylation-Specific PCR (MSP)

Genomic DNA was treated with sodium meta-bisulphite (Sigma) as previously described [56], but without restriction endonuclease digestion. MSP was performed according to our previous method [57]. Methylation-specific primers were: for methylated promoter (221-bp product), PRDM1bm1 (5'-ATTTAGTTTGACGTCGTTAGTC-3') and PRDM1bm3 (5'-TTATCGTCTTTTCATATTTCG-3'); for unmethylated promoter (227-bp product), PRDM1bu1 (5'-GATTTAGTTTGATGTTGTTAGTT-3') and PRDM1bu3 (5'-CAATTTTATCATCTTTTCATATTCA-3'). The MSP primers amplified a product overlapping CpG 4–8 as indicated on Figure 2. They did not amplify any DNA without bisulphite treatment and therefore were shown to be specific. For each sample, 0.5  $\mu$ L of bisulphite-treated DNA (~25 ng measured before bisulphite treatment) was PCR amplified using 0.3125 U of AmpliTaq Gold (Perkin Elmer, Norwalk, CT) for cell line DNA (or 0.46875 U of AmpliTaq Gold for normal PBMCs, lymph node, and primary HL DNA), with 2 mmol/L MgCl<sub>2</sub>, 0.2 mmol/L dNTP and 0.6  $\mu$ mol/L each primer in a 12.5  $\mu$ L reaction volume. MSP was conducted with hotstart taq master mix at 95 °C for 10 min, then 41 cycles (94 °C, 30s; 58 °C, 30s; 72 °C, 30s) for MSP, or 40 cycles (94 °C, 30s; 58 °C, 30s; 7 °C, 30s) for USP, followed by 72 °C for 5 mins. MSP products were analyzed on 2% agarose gel. A normally methylated gene, *ANKRD30A*, was also used as a positive control for those samples in which BLIMP1 $\beta$  methylation was undetectable.

### 3.6. Methylation Analysis of Micro-dissected HRS Cells by Nested-MSP

Two hundred HRS cells were micro-dissected from CD30-stained cryosections of each HL case using the PALM Microbeam (Carl Zeiss MicroImaging GmbH). Only CD30 positive cells with HRS morphology were microdissected. DNA was extracted from these cells using the QIAamp DNA Mini kit. DNA was then bisulphite-treated and amplified. For nested-MSP detecting methylated alleles, first-round PCR was performed using methylation-specific primers PRDM1bm1 and PRDM1bm3 (95 °C for 10 min, 40 cycles (94 °C, 30 s; 58 °C, 30 s; 72 °C, 30 s), followed by 72 °C for 5 mins), using 0.3125 U of AmpliTaq Gold in a 6.25 ml reaction. 3 ml of 10x diluted PCR products were used for a nested-MSP detecting methylated product (113-bp) with PRDM1bm1 and PRDM1bm2 (5'-TACTACAATAAATAACAAATAAACG-3'), 0.625 U of AmpliTaq Gold in a 12.5  $\mu$ L reaction. PCR was performed at 95 °C for 10 min, 65 cycles (94 °C, 30 s; 53 °C, 30 s; 72 °C, 30 s), followed by 72 °C for 5 mins. For nested-MSP detecting unmethylated alleles, primers PRDM1bu1 and PRDM1bu3

were used for the first-round PCR (40 cycles, with 0.3125 U of AmpliTaq Gold in a 6.25  $\mu$ L reaction). 3 mL of 10 $\times$  diluted PCR products was used in nested-MSP (114-bp product) with unmethylation-specific primers PRDM1bu1 and PRDM1bu2 (5'-TACTACAATAAATAACAAA TAAACA-3') (65 cycles, with 0.625 U of AmpliTaq Gold in a 12.5  $\mu$ L reaction).

### 3.7. Immunoblotting

Cells lysates were prepared in RIPA buffer (10 mM Tris-HCL (pH 8.0); 140 mM NaCl; 1 mM EDTA; 1% triton, 0.1% SDS, 0.1% Sodium deoxycholate, protease inhibitors) and briefly sonicated. Protein was quantified using Bio-Rad DC Protein Assay Kit (Bio-Rad). 30  $\mu$ g of U266 lysate or 75  $\mu$ g of LCLs and GC B cells lysates were combined with 2 $\times$  Laemmli sample buffer before SDS-PAGE (8% gel) and transferred to 0.45 m nitrocellulose transfer membrane (Protan BA85 membrane). The membrane was incubated with BLIMP1 antibody (Cell Signalling, 9115, rabbit polyclonal) diluted in 5% non-fat milk powder in TBS-Tween-20 (1:1,000) at 4  $^{\circ}$ C overnight. After a PBS-Tween-20 (0.1%) wash, blots were incubated for 30 minutes with anti-rabbit HRP-conjugated secondary IgG (Dako, 1:2,000). Anti-beta Tubulin (HRP-conjugated) antibody (Abcam, ab21058, rabbit polyclonal) or anti-Mcm-7 (Sigma-Aldrich, M7931, mouse monoclonal), both diluted in 5% non-fat milk powder in TBS-Tween-20 (1:2,000) were applied at room temperature for 1 hour. After a PBS-Tween-20 (0.1%) wash, detection was performed with enhanced chemiluminescence (GE Healthcare).

## 4. Conclusions

EBV infection leads not only to the down-regulation of BLIMP1 $\alpha$  but also to the up-regulation of BLIMP1 $\beta$ . The up-regulation of BLIMP1 $\beta$  is associated with hypomethylation of the BLIMP1 $\beta$  specific promoter.

## Acknowledgments

This work was supported by the Leukaemia and Lymphoma Research Fund and in part by grants MSM 6198959216 from the Czech Ministry of Education and European Union infrastructure support CZ.1.05/2.1.00/01.0030 and CZ.1.07/2.3.00/20.0019. We are grateful to Matthew Smith for help with western blotting.

## Conflict of Interest

The authors declare no conflict of interest.

## References

1. Györy, I.; Fejér, G.; Ghosh, N.; Seto, E.; Wright, K.L. Identification of a functionally impaired positive regulatory domain I binding factor 1 transcription repressor in myeloma cell lines. *J. Immunol.* **2003**, *170*, 125–133.
2. Shapiro-Shelef, M.; Lin K.I.; McHeyzer-Williams, L.J.; Liao, J.; McHeyzer-Williams, M.G.; Calame, K. Blimp-1 is required for the formation of immunoglobulin secreting plasma cells and pre-plasma memory B cells. *Immunity* **2003**, *19*, 607–620.

3. Calame, K.L.; Lin, K.I.; Tunyaplin, C. Regulatory mechanisms that determine the development and function of plasma cells. *Annu. Rev. Immunol.* **2003**, *21*, 205–230.
4. Morishita, K. Leukemogenesis of the EVI1/MEL1 Gene Family. *Int. J. Hematol.* **2007**, *85*, 279–286.
5. Huang, S. The retinoblastoma protein-interacting zinc finger gene RIZ in 1p36-linked cancers. *Front Biosci.* **1999**, *4*, 528–532.
6. Chadwick, R.B.; Jiang, G.L.; Bennington, G.A.; Yuan, B.; Johnson, C.K.; Stevens, M.W.; Niemann, T.H.; Peltomaki, P.; Huang, S.; de la Chapelle, A. Candidate tumor suppressor RIZ is frequently involved in colorectal carcinogenesis. *Proc. Natl. Acad. Sci. USA* **2000**, *97*, 2662–2667.
7. Steele-Perkins, G.; Fang, W.; Yang, X.H.; Van Gele, M.; Carling, T.; Gu, J.; Buyse, I.M.; Fletcher, J.A.; Liu, J.; Bronson, R.; Chadwick, R.B.; de la Chapelle, A.; Zhang, X.; Speleman, F.; Huang, S. Tumor formation and inactivation of RIZ1, an Rb-binding member of a nuclear proteinmethyltransferase superfamily. *Genes Dev.* **2001**, *15*, 2250–2262.
8. Sasaki, O.; Meguro, K.; Tohmiya, Y.; Funato, T.; Shibahara, S.; Sasaki, T. Altered expression of retinoblastoma protein-interacting zinc finger gene, RIZ, in human leukaemia. *Br. J. Haematol.* **2002**, *119*, 940–948.
9. He, L.; Yu, J.X.; Liu, L.; Buyse, I.M.; Wang, M.S.; Yang, Q.C.; Nakagawara, A.; Brodeur, G.M.; Shi, Y.E.; Huang, S. RIZ1, but not the alternative RIZ2 product of the same gene, is underexpressed in breast cancer, and forced RIZ1 expression causes G2-M cell cycle arrest and/or apoptosis. *Cancer Res.* **1998**, *58*, 4238–4244.
10. Cuenco, G.M.; Nucifora, G.; Ren, R. Human AML1/MDS1/EVI1 fusion protein induces an acute myelogenous leukemia (AML) in mice: A model for human AML. *Proc. Natl. Acad. Sci. USA* **2000**, *97*, 1760–1765.
11. Soderholm, J.; Kobayashi, H.; Mathieu, C.; Rowley, J.D.; Nucifora, G. The leukemia-associated gene MDS1/EVI1 is a new type of GATA-binding transactivator. *Leukemia* **1997**, *11*, 352–358.
12. Kurokawa, M.; Mitani, K.; Imai, Y.; Ogawa, S.; Yazaki, Y.; Hirai, H. The t(3;21) fusion product, AML1/Evi-1, interacts with Smad3 and blocks transforming growth factor-beta-mediated growth inhibition of myeloid cells. *Blood* **1998**, *92*, 4003–4012.
13. Kurokawa, M.; Mitani, K.; Irie, K.; Matsuyama, T.; Takahashi, T.; Chiba, S.; Yazaki, Y.; Matsumoto, K.; Hirai, H. The oncoprotein Evi-1 represses TGF-beta signalling by inhibiting Smad3. *Nature* **1998**, *394*, 92–96.
14. Nucifora, G. The EVI1 gene in myeloid leukemia. *Leukemia* **1997**, *11*, 2022–2031.
15. Sood, R.; Talwar-Trikha, A.; Chakrabarti, S.R.; Nucifora, G. MDS1/EVI1 enhances TGF-beta1 signaling and strengthens its growth-inhibitory effect but the leukemia-associated fusion protein AML1/MDS1/EVI1, product of the t(3;21), abrogates growth inhibition in response to TGF-beta1. *Leukemia* **1999**, *13*, 348–357.
16. Barjesteh van Waalwijk van Doorn-Khosrovani, S.; Erpelinck, C.; van Putten, W.L.; Valk, P.J.; van der Poel-van de Luytgaarde, S.; Hack, R.; Slater, R.; Smit, E.M.; Beverloo, H.B.; Verhoef, G.; Verdonck, L.F.; Ossenkoppele, G.J.; Sonneveld, P.; de Greef, G.E.; Löwenberg, B.; Delwel, R. High EVI1 expression predicted poor survival in acute myeloid leukemia: A study of 319 de novo AML patients. *Blood* **2003**, *101*, 837–845.

17. Mochizuki, N.; Shimizu, S.; Nagasawa, T.; Tanaka, H.; Taniwaki, M.; Yokota, J.; Morishita, K. A novel gene, *MEL1*, mapped to 1p36.3 is highly homologous to the *MDS1/EV11* gene and is transcriptionally activated in t(1;3)(p36;q21)-positive leukemia cells. *Blood* **2000**, *96*, 3209–3214.
18. Tam, W.; Gomez, M.; Chadburn, A.; Lee, J.W.; Chan, W.C.; Knowles, D.M. Mutational analysis of PRDM1 indicates a tumor-suppressor role in diffuse large B-cell lymphomas. *Blood* **2006**, *107*, 4090–4100.
19. Pasqualucci, L.; Compagno, M.; Houldsworth, J.; Monti, S.; Grunn, A.; Nandula, S.V.; Aster, J.C.; Murty, V.V.; Shipp, M.A.; Dalla-Favera, R. Inactivation of the PRDM1/BLIMP1 gene in diffuse large B cell lymphoma. *J. Exp. Med.* **2006**, *203*, 311–317.
20. Ocana, E.; Gonzalez-Garcia, I.; Gutierrez, N.C.; Mora-Lopez, F.; Brieva, J.A.; Campos-Caro, A. The expression of PRDI-BF1 beta isoform in multiple myeloma plasma cells. *Haematologica* **2006**, *91*, 1579–1580.
21. Zhao, W.L.; Liu, Y.Y.; Zhang, Q.L.; Wang, L.; Leboeuf, C.; Zhang, Y.W.; Ma, J.; Garcia, J.F.; Song, Y.P.; Li, J.M.; Shen, Z.X.; Chen, Z.; Janin, A.; Chen, S.J. PRDM1 is involved in chemoresistance of T-cell lymphoma and down-regulated by the proteasome inhibitor. *Blood* **2008**, *111*, 3867–3871.
22. Liu, Y.Y.; Leboeuf, C.; Shi, J.Y.; Li, J.M.; Wang, L.; Shen, Y.; Garcia, J.F.; Shen, Z.X.; Chen, Z.; Janin, A.; Chen, S.J.; Zhao, W.L. Rituximab plus CHOP (R-CHOP) overcomes PRDM1-associated resistance to chemotherapy in patients with diffuse large B-cell lymphoma. *Blood* **2007**, *110*, 339–344.
23. Zhang, Y.W.; Xie, H.Q.; Chen, Y.; Jiao, B.; Shen, Z.X.; Chen, S.J.; Zhao, W.L. Loss of promoter methylation contributes to the expression of functionally impaired PRDM1 $\beta$  isoform in diffuse large B-cell lymphoma. *Int. J. Hematol.* **2010**, *92*, 439–444.
24. Baumforth, K.R.N.; Flavell, J.R.; Davies, G.; Reynolds, G.M.; Pettit, T.; Wei, W.; Kishi, Y.; Arai, H.; Morgan, S.; Stankovic, T.; Nowakova, M.; Pratt, G.; Aoki, J.; Wakelam, M.J.O.; Young, L.S.; Murray, P.G. Induction of autotaxin by Epstein-Barr virus promotes the growth and survival of Hodgkin's lymphoma cells. *Blood* **2005**, *106*, 2138–2146.
25. Oyama, T.; Yamamoto, K.; Asano, N.; Oshiro, A.; Suzuki, R.; Kagami, Y.; Morishima, Y.; Takeuchi, K.; Izumo, T.; Mori, S.; Ohshima, K.; Suzumiya, J.; Nakamura, N.; Abe, M.; Ichimura, K.; Sato, Y.; Yoshino, T.; Naoe, T.; Shimoyama, Y.; Kamiya, Y.; Kinoshita, T.; Nakamura S. Age-related EBV-associated B-cell lymphoproliferative disorders constitute a distinct clinicopathologic group: A study of 96 patients. *Clin. Cancer Res.* **2007**, *13*, 5124–5132.
26. Anastasiadou, E.; Vaeth, S.; Cuomo, L.; Boccellato, F.; Vincenti, S.; Cirone, M.; Presutti, C.; Junker, S.; Winberg, G.; Frati, L.; Wade, P.A.; Faggioni, A.; Trivedi, P. Epstein-Barr virus infection leads to partial phenotypic reversion of terminally differentiated malignant B cells. *Cancer Lett.* **2009**, *284*, 165–174.
27. Vrzalikova, K.; Vockerodt, M.; Leonard, S.; Bell, A.; Wei, W.; Schrader, A.; Wright, K.L.; Kube, D.; Rowe, M.; Woodman, C.B.; Murray, P.G. Down-regulation of BLIMP1 $\alpha$  by the EBV oncogene LMP1 disrupts the plasma cell differentiation program and prevents viral replication in B cells: Implications for the pathogenesis of EBV-associated B cell lymphomas. *Blood* **2011**, *117*, 5907–5917.

28. Leonard, S.; Wei, W.; Anderton, J.; Vockerodt, M.; Rowe, M.; Murray, P.G.; Woodman, C.B.J. An investigation of the epigenetic and transcriptional changes which follow Epstein-Barr virus infection of germinal centre B cells and their relevance to the pathogenesis of Hodgkin's lymphoma. *J. Virol.* **2011**, *85*, 9568–9577.
29. Shimshon, L.; Michaeli, A.; Hadar, R.; Nutt, S.L.; David, Y.; Navon, A.; Waisman, A.; Tirosh, B. SUMOylation of Blimp-1 promotes its proteasomal degradation. *FEBS Lett.* **2011**, *585*, 2405–2409.
30. Ying, H.Y.; Su, S.T.; Hsu, P.H.; Chang, C.C.; Lin, I.Y.; Tseng, Y.H.; Tsai, M.D.; Shih, H.M.; Lin, K.I. SUMOylation of Blimp-1 is critical for plasma cell differentiation. *EMBO Rep.* **2012**, *13*, 631–637.
31. Schmidt, D.; Nayak, A.; Schumann, J.E.; Schimpl, A.; Berberich, I.; Berberich-Siebelt, F. Blimp-1Deltaexon7: A naturally occurring Blimp-1 deletion mutant with auto-regulatory potential. *Exp. Cell Res.* **2008**, *314*, 3614–3627.
32. Smith, M.A.; Maurin, M.; Cho, H.I.; Becknell, B.; Freud, A.G.; Yu, J.; Wei, S.; Djeu, J.; Celis, E.; Caligiuri, M.A.; Wright, K.L. PRDM1/Blimp-1 controls effector cytokine production in human NK cells. *J. Immunol.* **2010**, *185*, 6058–6067.
33. Abbondanza, C.; De Rosa, C.; D'Arcangelo, A.; Pacifico, M.; Spizuoco, C.; Piluso, G.; Di Zazzo, E.; Gazzero, P.; Medici, N.; Moncharmont, B.; Puca, G.A. Identification of a functional estrogen-responsive enhancer element in the promoter 2 of PRDM2 gene in breast cancer cell lines. *J. Cell Physiol.* **2012**, *227*, 964–975.
34. Tunyaplin, C.; Shapiro, M.A.; Calame, K.L. Characterization of the B lymphocyte induced maturation protein-1 (Blimp-1) gene, mRNA isoforms and basal promoter. *Nucleic Acids Res.* **2000**, *28*, 4846–4855.
35. Buettner, M.; Greiner, A.; Avramidou, A.; Jäck, H.M.; Niedobitek, G. Evidence of abortive plasma cell differentiation in Hodgkin and Reed-Sternberg cells of classical Hodgkin lymphoma. *Hematol. Oncol.* **2005**, *23*, 127–132.
36. Cattoretti, G.; Angelin-Duclos, C.; Shaknovich, R.; Zhou, H.; Wang, D.; Alobeid, B. PRDM1/Blimp-1 is expressed in human B-lymphocytes committed to the plasma cell lineage. *J. Pathol.* **2005**, *206*, 76–86.
37. Garcia, J.F.; Roncador, G.; García, J.F.; Sández, A.I.; Maestre, L.; Lucas, E.; Montes-Moreno, S.; Fernandez Victoria, R.; Martinez-Torrecedrara, J.L.; Marafioti, T.; Mason, D.Y.; Piris, M.A. PRDM1/BLIMP-1 expression in multiple B and T-cell lymphoma. *Haematologica* **2006**, *91*, 467–474.
38. Natkunam, Y.; Hsi, E.D.; Aoun, P.; Zhao, S.; Elson, P.; Pohlman, B.; Naushad, H.; Bast, M.; Levy, R.; Lossos, I.S. Expression of the human germinal center-associated lymphoma (HGAL) protein identifies a subset of classic Hodgkin lymphoma of germinal center derivation and improved survival. *Blood* **2007**, *109*, 298–305.
39. Kamesaki, H.; Fukuhara, S.; Tatsumi, E.; Uchino, H.; Yamabe, H.; Miwa, H.; Shirakawa, S.; Hatanaka, M.; Honjo, T. Cytochemical, immunologic, chromosomal, and molecular genetic analysis of a novel cell line derived from Hodgkin's disease. *Blood* **1986**, *68*, 285–292.
40. Schaadt, M.; Diehl, V.; Stein, H.; Fonatsch, C.; Kirchner, H.H. Two neoplastic cell lines with unique features derived from Hodgkin's disease. *Int. J. Cancer* **1980**, *26*, 723–731.

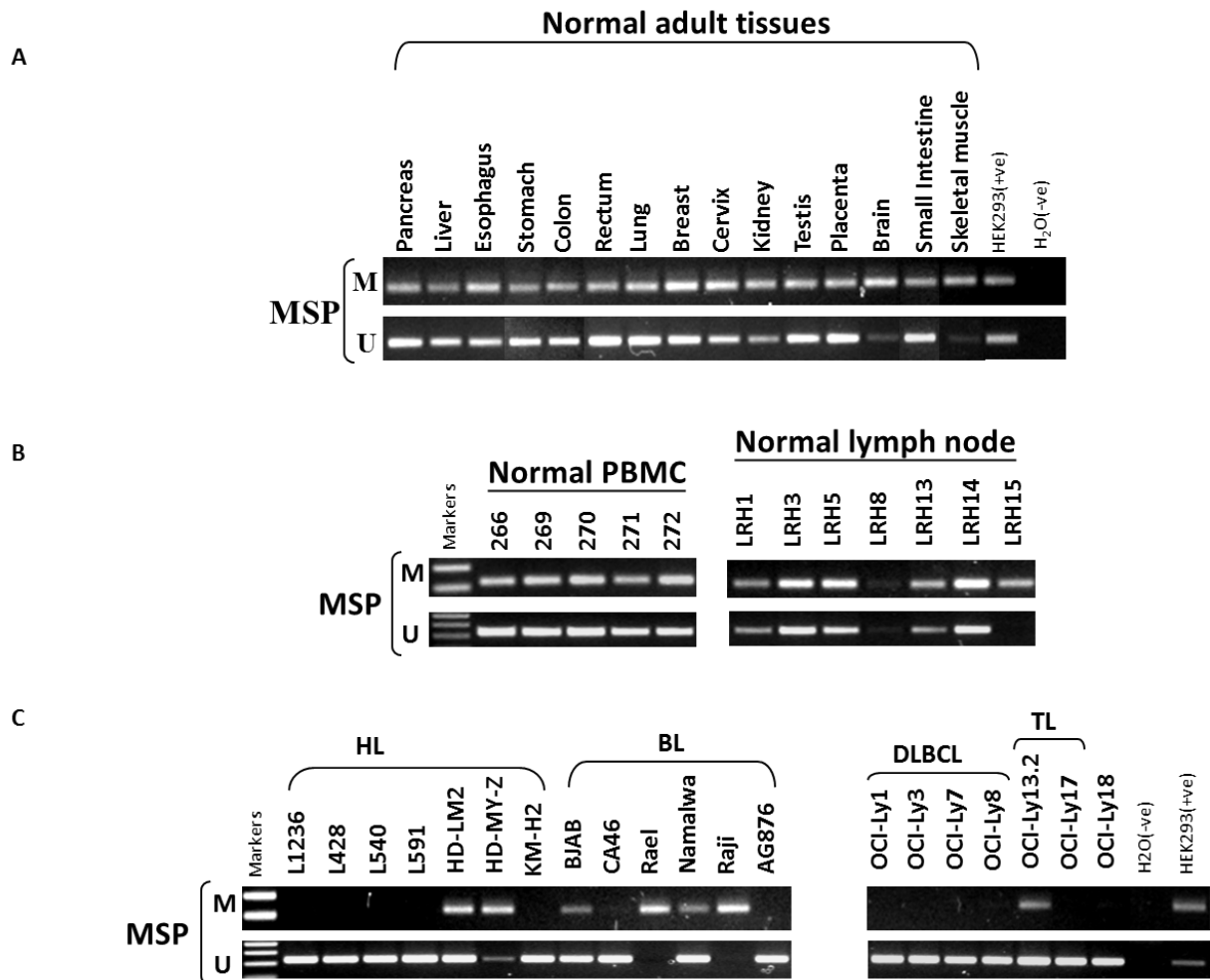


41. Drexler, H.G.; Gignac, S.M.; Hoffbrand, A.V.; Leber, B.F.; Norton, J.; Lok, M.S.; Minowada, J. Characterization of Hodgkin's disease derived cell line HDLM-2. *Recent Results Cancer Res.* **1989**, *117*, 75–82.
42. Bargou, R.C.; Mapara, M.Y.; Zugck, C.; Daniel, P.T.; Pawlita, M.; Döhner, H.; Dörken, B. Characterization of a novel Hodgkin cell line, HD-MyZ, with myelomonocytic features mimicking Hodgkin's disease in severe combined immunodeficient mice. *J. Exp. Med.* **1993**, *177*, 1257–1268.
43. Wolf, J.; Kapp, U.; Bohlen, H.; Kornacker, M.; Schoch, C.; Stahl, B.; Mucke, S.; von Kalle, C.; Fonatsch, C.; Schaefer, H.E.; Hansmann, M.L.; Diehl, V. Peripheral blood mononuclear cells of a patient with advanced Hodgkin's lymphoma give rise to permanently growing Hodgkin-Reed Sternberg cells. *Blood* **1996**, *87*, 3418–3428.
44. Drexler, H.G.; Leber, B.F.; Norton, J.; Yaxley, J.; Tatsumi, E.; Hoffbrand, A.V.; Minowada, J. Genotypes and immunophenotypes of Hodgkin's disease-derived cell lines. *Leukemia* **1988**, *2*, 371–376.
45. Diehl, V.; Kirchner, H.H.; Burcher, H.; Stein, H.; Fonatsch, C.; Gerdes, J.; Schaadt, M.; Heit, W.; Uchanska-Ziegler, B.; Ziegler, A.; Heintz, F.; Sueno, K. Characteristics of Hodgkin's disease-derived cell lines. *Canc. Treat. Rep.* **1982**, *66*, 615–632.
46. Cohen, J.H.; Revillard, J.P.; Magaud, J.P.; Lenoir, G.; Vuillaume, M.; Manel, A.M.; Vincent, C.; Bryon, P.A. B-cell maturation stages of Burkitt's lymphoma cell lines according to Epstein-Barr virus status and type of chromosome translocation. *J. Natl. Cancer Inst.* **1987**, *78*, 235–242.
47. Magrath, I.T.; Freeman, C.B.; Pizzo, P.; Gadek, J.; Jaffe, E.; Santaella, M.; Hammer, C.; Frank, M.; Reaman, G.; Novikovs, L. Characterization of lymphoma-derived cell lines: Comparison of cell lines positive and negative for Epstein-Barr virus nuclear antigen. II. Surface markers. *J. Natl. Cancer Inst.* **1980**, *64*, 477–483.
48. Klein, G.; Lindahl, T.; Jondal, M.; Leibold, W.; Menezes, J.; Nilsson, K.; Sundstrom, C. Continuous lymphoid cell lines with characteristics of B cells, lacking the EBV genome and derived from three human lymphomas. *Proc. Natl. Acad. Sci. USA* **1974**, *71*, 3283–3286.
49. Klein, G.; Dombos, L.; Gothosokar, B. Sensitivity of Epstein-Barr virus (EBV) producer and non-producer human lymphoblastoid cell lines to superinfection of with EB-virus. *Int. J. Cancer* **1972**, *10*, 44–57.
50. Epstein, M.A.; Achong, Y.M.; Barr, Y.; Zajac, B.; Henle, G.; Henle, W. Morphological and virological investigations on cultured Burkitt tumor lymphoblasts (strain Raji). *J. Natl. Cancer Inst.* **1966**, *37*, 547–559.
51. King, W.; Thomas-Poweil, A.L.; Raab-Traub, N.; Hawke, M.; Kieff, E. Epstein-Barr virus RNA. V. Viral RNA in a restringently infected, growth-transformed cell line. *J. Virol.* **1980**, *36*, 506–518.
52. Klein, G.; Dombos, L. Relationship between the sensitivity of EBV-carrying lymphoblastoid lines to superinfection and the inducibility of the resident viral genome. *Int. J. Cancer* **1973**, *11*, 327–337.
53. Tweeddale, M.E.; Lim, B.; Jamal, N.; Robinson, J.; Zalcborg, J.; Lockwood, G.; Minden, M.D.; Messner, H.A. The presence of clonogenic cells in high-grade malignant lymphoma: A prognostic factor. *Blood* **1987**, *69*, 1307–1314.

54. Nilsson, K.; Bennich, H.; Johansson, S.G.; Pontén, J. Established immunoglobulin producing myeloma (IgE) and lymphoblastoid (IgG) cell lines from an IgE myeloma patient. *Clin. Exp. Immunol.* **1970**, *7*, 477–489.
55. Bell, A.I.; Groves, K.; Kelly, G.L.; Croom-Carter, D.; Hui, E.; Chan, A.T.; Rickinson, A.B. Analysis of Epstein-Barr virus latent gene expression in endemic Burkitt's lymphoma and nasopharyngeal carcinoma tumour cells by using quantitative real-time PCR assays. *J. Gen. Virol.* **2006**, *87*, 2885–2890.
56. Murray, P.G.; Qiu, G.H.; Fu, L.; Waites, E.R.; Srivastava, G.; Heys, D.; Agathangelou, A.; Latif, F.; Grundy, R.G.; Mann, J.R.; Starczynski, J.; Crocker, J.; Parkes, S.E.; Ambinder, R.F.; Young, L.S.; Tao, Q. Frequent epigenetic inactivation of the *RASSF1A* tumor suppressor gene in Hodgkin's lymphoma. *Oncogene* **2004**, *23*, 1326–1331.
57. Murray, P.G.; Fan, Y.; Davies, G.; Ying, J.; Geng, H.; Ng, K.M.; Li, H.; Gao, Z.; Kapatai, G.; Bose, S.; Anderton, J.A.; Reynolds, G.M.; Ito, A.; Woodman, C.B.J.; Marafioti, T.; Ambinder, R.F.; Tao, Q. Epigenetic silencing of a proapoptotic cell adhesion molecule—the immunoglobulin superfamily member IGSF4 by promoter CpG methylation protects Hodgkin's lymphoma cells from apoptosis. *Am. J. Pathol.* **2010**, *177*, 1480–1490.

© 2012 by the authors; licensee MDPI, Basel, Switzerland. This article is an open access article distributed under the terms and conditions of the Creative Commons Attribution license (<http://creativecommons.org/licenses/by/3.0/>).

**Supplementary Figure 1.** Methylation-specific PCR (MSP) analysis of the BLIMP1 $\beta$ -promoter in normal tissues and lymphoma cell lines.



As expected both methylated and un-methylated forms are detectable in most normal adult tissues (A), including normal PBMCs and normal lymph nodes (B). In contrast, only un-methylated forms are detectable in the four B-cell derived HL cell lines (L1236, L428, L591 and KMH2), and in one of two T cell-derived HL cell lines (L540) (C). Only un-methylated BLIMP1 $\beta$  was detected in all five DLBCL lines (OCI-Ly1, 3, 7, 8, and-18) and in one T cell lymphoma line (OCI-Ly17).

**Supplementary Table 1.** Commercial Real-time-PCR assays.

Gene name	Applied Biosystem Gene expression assay
BLIMP1 (PRDM1) $\alpha$ isoform	Hs01068508_m1
GAPDH	4310886E
$\beta$ 2m	4310884E

**Supplementary Table 2.** Primers used in pyrosequencing.

<b>primer</b>	<b>sequence</b>
PCR forward biotinylated primer (region 1)	TAGGTTTGGTTAGTGA
PCR reverse non biotinylated primer (region 1)	CACTTTTATCTTTCCA
Sequencing primer (region 1)	TTTTATCAATTTTCC
PCR forward non biotinylated primer (region 2)	GGTGGAGGATAGTTGA
PCR reverse biotinylated primer (region 2)	AAATAAACCAAATTCC
Sequencing primer (region 2)	TGTATAGTTGTTTGGG

**Supplementary Table 3.** EBV status of primary HL cases micro-dissected for analysis of BLIMP1 $\beta$  methylation in HRS cells.

<b>LCM case No.</b>	<b>Original MD HRS case No.</b>	<b>EBV status</b>	<b>BLIMP1<math>\beta</math>methylation</b>
LCM1	4/054	–	U
LCM2	4/133	–	M
LCM3	05/452	–	W
LCM4	05/363	+	W
LCM5	05/009	–	W
LCM6	05/092	+	U
LCM7	05/494	–	U

Key: U = unmethylated; M = methylated; W = weakly methylated.