

## The first small-molecule inhibitors of members of the ribonuclease E family

Kime, Louise; Vincent, Helen A.; Gendoo, Deena; Jourdan, Stefanie S.; Fishwick, Colin W. G.; Callaghan, Anastasia J.; McDowall, Kenneth J.

DOI:

[10.1038/srep08028](https://doi.org/10.1038/srep08028)

License:

Creative Commons: Attribution (CC BY)

*Document Version*

Publisher's PDF, also known as Version of record

*Citation for published version (Harvard):*

Kime, L, Vincent, HA, Gendoo, D, Jourdan, SS, Fishwick, CWG, Callaghan, AJ & McDowall, KJ 2015, 'The first small-molecule inhibitors of members of the ribonuclease E family', *Scientific Reports*, vol. 5, 8028. <https://doi.org/10.1038/srep08028>

[Link to publication on Research at Birmingham portal](#)

### **Publisher Rights Statement:**

Kime, L. et al (2015) The first small-molecule inhibitors of members of the ribonuclease E family, *Scientific Reports*, volume 5, article no 8028, <https://doi.org/10.1038/srep08028>

### **General rights**

Unless a licence is specified above, all rights (including copyright and moral rights) in this document are retained by the authors and/or the copyright holders. The express permission of the copyright holder must be obtained for any use of this material other than for purposes permitted by law.

- Users may freely distribute the URL that is used to identify this publication.
- Users may download and/or print one copy of the publication from the University of Birmingham research portal for the purpose of private study or non-commercial research.
- User may use extracts from the document in line with the concept of 'fair dealing' under the Copyright, Designs and Patents Act 1988 (?)
- Users may not further distribute the material nor use it for the purposes of commercial gain.

Where a licence is displayed above, please note the terms and conditions of the licence govern your use of this document.

When citing, please reference the published version.

### **Take down policy**

While the University of Birmingham exercises care and attention in making items available there are rare occasions when an item has been uploaded in error or has been deemed to be commercially or otherwise sensitive.

If you believe that this is the case for this document, please contact [UBIRA@lists.bham.ac.uk](mailto:UBIRA@lists.bham.ac.uk) providing details and we will remove access to the work immediately and investigate.



## OPEN

# The First Small-Molecule Inhibitors of Members of the Ribonuclease E Family

## SUBJECT AREAS:

TARGET VALIDATION  
ANTIMICROBIALSLouise Kime<sup>1</sup>, Helen A. Vincent<sup>2</sup>, Deena M. A. Gendoo<sup>1</sup>, Stefanie S. Jourdan<sup>1</sup>, Colin W. G. Fishwick<sup>1,3</sup>, Anastasia J. Callaghan<sup>2</sup> & Kenneth J. McDowall<sup>1</sup>Received  
9 September 2014Accepted  
16 December 2014Published  
26 January 2015Correspondence and  
requests for materials  
should be addressed to  
L.K. (l.kime@leeds.ac.  
uk)<sup>1</sup>Asbury Centre for Structural Molecular Biology, University of Leeds, Leeds, LS2 9JT, UK, <sup>2</sup>School of Biological Sciences and Institute of Biomedical and Biomolecular Sciences, University of Portsmouth, Portsmouth, PO1 2DY, UK, <sup>3</sup>School of Chemistry, University of Leeds, Leeds, LS2 9JT, UK.

The *Escherichia coli* endoribonuclease RNase E is central to the processing and degradation of all types of RNA and as such is a pleotropic regulator of gene expression. It is essential for growth and was one of the first examples of an endonuclease that can recognise the 5'-monophosphorylated ends of RNA thereby increasing the efficiency of many cleavages. Homologues of RNase E can be found in many bacterial families including important pathogens, but no homologues have been identified in humans or animals. RNase E represents a potential target for the development of new antibiotics to combat the growing number of bacteria that are resistant to antibiotics in use currently. Potent small molecule inhibitors that bind the active site of essential enzymes are proving to be a source of potential drug leads and tools to dissect function through chemical genetics. Here we report the use of virtual high-throughput screening to obtain small molecules predicted to bind at sites in the N-terminal catalytic half of RNase E. We show that these compounds are able to bind with specificity and inhibit catalysis of *Escherichia coli* and *Mycobacterium tuberculosis* RNase E and also inhibit the activity of RNase G, a paralogue of RNase E.

The rapid turnover of RNA is central to the regulation of gene expression in all forms of life<sup>1</sup>. It ensures, for example, that translation closely follows programming at the level of transcription. In *Escherichia coli*, a valuable model system, it has been found that a single-strand-specific endoribonuclease called RNase E is required for rapid turnover of mRNA and in addition the processing of many RNAs including those of the translational machinery<sup>2,3</sup>. *E. coli* RNase G, a paralogue of RNase E, cooperates with RNase E in the maturation of 16S ribosomal RNA<sup>4,5</sup> and is also involved in the normal degradation of many mRNAs<sup>6,7</sup>. RNase E is a potential target for developing new antibiotics, which are increasingly needed given the rising tide of resistance emerging in bacteria of clinical importance. It is essential for the growth of *E. coli*<sup>8,9</sup> and homologues have been found in about half of the bacteria whose genomes have been sequenced, including important pathogens, such as *Salmonella* species, *Yersinia pestis*, *Mycobacterium tuberculosis*, and *Vibrio cholerae*<sup>10–13</sup>. Furthermore, no homologues of RNase E have been identified in humans or animals.

The N-terminal catalytic half (NTH) of RNase E is a tetramer, which is best described as a dimer of dimers<sup>14,15</sup>. Each dimer contributes a pair of equivalent antiparallel channels that include the sites of catalysis. Each channel binds a single-stranded RNA segment and has an adjacent pocket for binding 5' termini that are both monophosphorylated and unpaired (Fig. 1a–c)<sup>16</sup>. Such termini are found on the downstream products of cleavage and may provide a means of prolonging contact such that additional cleavages can occur<sup>17</sup>. Each single-stranded RNA-binding channel<sup>16</sup> is formed on one side by a domain that closely resembles the RNA-binding domain of S1<sup>18</sup> and on the other side by one that resembles the catalytic domain of DNase I<sup>19</sup>. The latter reveals an unexpected link in the evolution of RNA and DNA nucleases. Aspartic acid residues at 303 and 346 in the DNase I domain may act as general bases to activate the hydroxyl group of a water molecule coordinated to the magnesium to attack the scissile phosphate<sup>16</sup>. The scissile phosphodiester bond in the RNA is the point at which cleavage occurs (the bases 3' to the site of RNA cleavage are defined as +1, +2..., and those 5' are –1, –2...). The contacts between RNase E and bound RNA are described in the legend to Fig. 1a–c. Recent evidence suggests that simultaneous recognition of two or more unpaired regions may provide a sufficiently stable interaction for efficient cleavage by RNase E to occur<sup>6,20,21</sup>. However, it is also clear that the efficient cleavage of some substrates requires them to be 5' monophosphorylated<sup>17,22,23</sup>. A simple explanation for these observations is that because of structural constraints not all RNAs present a combination of unpaired regions that can cooperate in binding RNase E, but for some of these RNAs a 5'-monophosphorylated end provides an additional foothold for RNase E that allows binding and cleavage of a co-accessible unpaired region<sup>6,21</sup>.



The study of RNA processing and decay in *E. coli* has made extensive use of two mutants of RNase E that are temperature sensitive<sup>8,9,24,25</sup> and have amino acid substitutions in the S1-like domain<sup>26</sup>. However, the interpretation of whether specific steps require the endonucleolytic activity of RNase E has been complicated by reports that residual activity is retained at non-permissive temperatures *in vivo*<sup>27,28</sup> and the observation that for at least one of these mutants aggregation is associated with thermal inactivation *in vitro* (McDowall, K. J. & Stead, J. A., University of Leeds, unpubl. data). The latter has ramifications because RNase E forms the platform for the assembly of the degradosome complex, which includes other components known to play key roles in RNA processing and turnover<sup>29,30</sup>. Thus, a method of blocking RNase E activity efficiently without consequence on the structural integrity of the degradosome would be of considerable value in assigning cellular functions to RNase E. Although, for the purpose of studying RNA processing and turnover, it is desirable to be able to block RNase E activity *in vivo*, the ability to do so in cell extracts and preparations of purified components would itself be of considerable value for biochemical studies.

Small molecules that bind within the active sites of essential enzymes have proved to be a source of potent inhibitors and drug leads<sup>31</sup>. In the case of an endoribonuclease, assays can be developed to screen libraries of small molecule inhibitors, that provide a fluorescence output when cleavage of the RNA substrate releases a quencher<sup>32,33</sup>. However, when structure(s) of a target protein is available, such as for RNase E, another option is virtual high-throughput screening (VHTS)<sup>34,35</sup>. VHTS is a computer-based method that provides a score that reflects the likelihood that individual compounds in a library will be able to bind a target receptor<sup>36</sup>. Herein, we report the combined use of SPROUT<sup>37</sup> and eHiTS<sup>38</sup>, VHTS computer packages, to identify small molecules that are predicted to target the NTH of *E. coli* RNase E. We also report their activity with regard to binding, inhibition and specificity.

## Results

**Selection of small molecules targeting *E. coli* NTH-RNase E by VHTS.** The site of catalysis and the 5' monophosphate-binding pocket (Fig. 1b and c) within the single-stranded RNA-binding channel were chosen as targets for VHTS. Two high-resolution X-ray crystal structures of *E. coli* NTH-RNase E as a trapped intermediate with oligoribonucleotide substrates (2BX2 and 2C0B)<sup>16</sup> were first superimposed using SWISS-PDB Viewer<sup>39</sup>. There were no significant differences in the position of amino-acid residues within the chosen targets of the two X-ray structures (data not shown). Thus, we chose arbitrarily to use the coordinates of the 2C0B entry (3.2 Å resolution) for the 5' end-binding pocket and the 2BX2 entry (2.8 Å resolution) for the site of catalysis. Within the CAnGAROO module of SPROUT, the 5' nucleotide of the RNA was used to define a 'cavity' (*i.e.* the space available for ligand generation) for the 5' monophosphate-binding pocket, while the nucleotides immediately 5' and 3' to the phosphodiester bond that is normally cleaved were used to define a cavity for the site of catalysis. Next, amino acid residues within an envelope that extends 10 Å in radius from the segments of RNA used to derive the cavities were chosen to form the actual receptors for VHTS. 58,833 compounds in the Maybridge database were screened against the '5' monophosphate-binding pocket' and 'catalytic site' receptors using eHiTS. Compounds with an eHiTS score of  $\leq -4.0$  were then analysed further using SPROUT. Those with log p, eHiTS and SPROUT values of  $\leq 5.0$ ,  $\leq -4.0$  and  $\leq -4.9$ , respectively, were viewed - using the SDF file generated by eHiTS - to manually identify those with drug-like properties. The final selection criterion was that compounds should be predicted to form at least one hydrogen bond with RNase E. This was done using the 'Explore' function of the HIPPO module in SPROUT. This produced a list of 23 compounds against the 5'

end-binding pocket (designated 'P' compounds) and 10 compounds against the catalytic site (designated 'M' compounds). Of these only 21 and 9 could be supplied commercially to us, respectively (Supplementary Table S1). The predicted docking of small molecules, described further below, into the catalytic site and 5' sensor are provided (Fig. 1d and e, respectively). An alignment indicating the residues from *E. coli* RNase E that formed the cavities for docking of small molecules is provided (Supplementary Fig. S1).

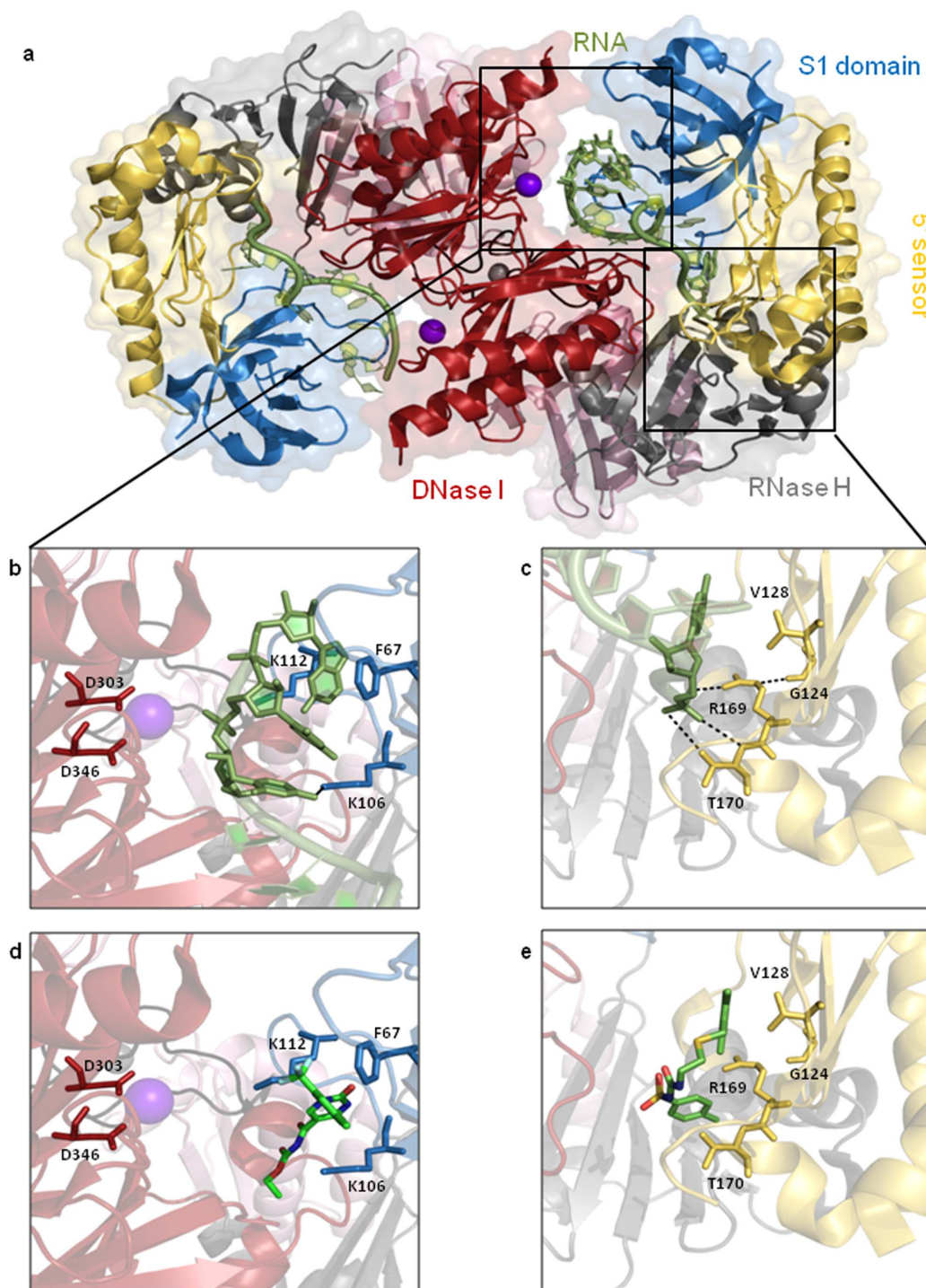
### Small molecule binding and inhibition of *E. coli* NTH-RNase E.

The ability of the compounds from VHTS to bind and inhibit a recombinant polypeptide of RNase E, used in previous structural and functional studies<sup>14-16,40,41</sup>, was assayed using Surface Plasmon Resonance (SPR) and a discontinuous cleavage assay, respectively. Eleven compounds were found to bind RNase E and are described below. Seven compounds (M3, M5, M8, M9, P6, P11, and P16) produced binding curves consistent with targeting of specific sites, *i.e.* binding began to plateau at higher concentrations. Of these seven, M5, M8, P6, and P11 clearly inhibited catalysis under the conditions used. Compound M9 also inhibited catalysis but much less efficiently. Three other compounds inhibited RNase E (P10, P14 and P21); however, P10 appeared to bind at sites other than the intended target (*i.e.* binding did not plateau and was seen to be non-specific), while assaying the binding of P14 and P21 was precluded due to their low solubility. The final compound, M2, did not inhibit RNase E under the conditions used and also appeared to bind but at sites other than the intended target. The SPR and inhibition assay results for M5 and P11, which showed the best inhibition of *E. coli* RNase E and bind with specificity, are shown along with P10, providing an example of a compound that inhibits but which appears to bind at sites other than the intended target (Fig. 2). Apparent dissociation constants estimated from the SPR experiments, along with nominal IC<sub>50</sub> values are included in Table 1.

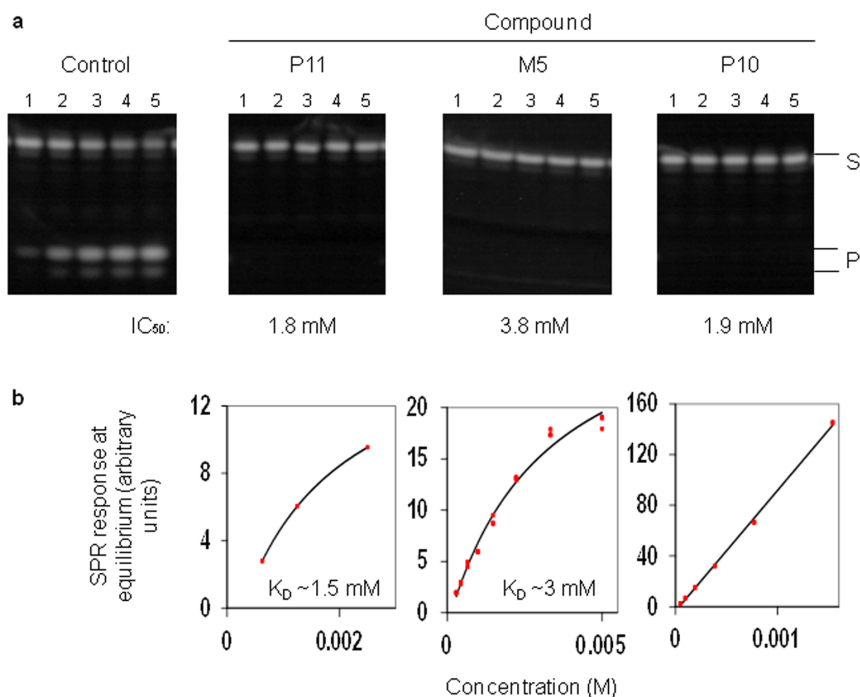
### Binding and inhibition of *Mycobacterium tuberculosis* RNase E and *E. coli* RNase G.

A sequence alignment of the catalytic domain of *E. coli* RNase E with a homologue from *M. tuberculosis* and RNase G, a paralogue of *E. coli* RNase E, show high conservation of residues (Supplementary Fig. S1). The value of compounds that inhibit RNase E, whether as leads for developing new antimicrobials or investigating RNA processing and degradation, is increased if they target homologues in other species as well as the *E. coli* enzyme. Thus, we assayed the ability of a selection of compounds to bind and inhibit RNase E from *M. tuberculosis*, a pathogenic bacterial species of significant clinical relevance<sup>42,43</sup>. As found for *E. coli* RNase E, P11 and M5 produced SPR binding curves consistent with specific targeting (data not shown). Compound P11 showed clear inhibition of *M. tuberculosis* RNase E, while M5 inhibits activity but appears to be less efficient than with the *E. coli* enzyme, but most likely reflects the different concentrations of compound used (Fig. 3a and Fig. 2a). It may also reflect subtle differences in the structure of the active site between the *M. tuberculosis* and *E. coli* enzymes and the residues used for docking (Supplementary Fig. S1).

The compounds shown to inhibit catalysis by *E. coli* RNase E (P6, P10, P11, M5 and M9) were also found to be able to inhibit the activity of RNase G with comparable IC<sub>50</sub> values (Fig. 3b and Table 1). The 'P' compounds were slightly less effective with RNase G and, as above, may reflect differences in the 5'-monophosphate binding pocket between RNase E and G and in the residues used for docking (Supplementary Fig. S1). The value of the compounds will be increased further if they can be used in conjunction to target the two different sites (5' sensor and catalytic site) simultaneously to enhance inhibition of RNase E catalysis. When compound M5 (representing targeting of the catalytic site) was incubated with P11 (targeting of the 5' sensor) at their IC<sub>50</sub> concentrations (expect to observe 50% inhibition with the single compound), enhanced inhibition of *E. coli* RNase E was observed to a level of almost



**Figure 1 | Structure of the RNase E catalytic domain and compound docking.** (a) A top elevation of a principal dimer of the N-terminal catalytic domain of *E. coli* RNase E with bound RNA (green). The dimer is shown as a surface representation with the two protomers superimposed as a cartoon diagram. Red, blue, gold and grey colouring identifies the DNase I, S1, 5' sensor and RNase H domains, respectively. The zinc and magnesium ions are shown as grey and magenta spheres, respectively. (b) The catalytic site. The DNase I side of each of the two channels presents a magnesium ion that is co-ordinated by the carboxylates of aspartic acid residues 303 and 346. The base of the nucleotide at the +2 position relative to the site of RNA cleavage is partitioned into a recess on the surface of the S1 domain. The nucleotide base is held by hydrophobic interactions with a phenylalanine at position 67 and the aliphatic portion of a lysine at position 112. The exocyclic oxygen of the base of the nucleotide immediately 5' forms a hydrogen bond with a lysine at position 106, also in the S1 domain. (c) The pocket for 5'-monophosphorylated ends contacts both the monophosphate group and the base of the terminal nucleotide. The monophosphate group is hydrogen bonded by the side-chain and peptide amide of a threonine at position 170 and the guanidino group of an arginine at 169; the latter interaction is supported by a hydrogen bond to the peptide backbone of a glycine at position 124. The aromatic ring of the base of the terminal nucleotide is contacted via hydrophobic interaction with the side chain of a valine at 128. (d) The site of catalysis, with predicted docking of compound M5. (e) The 5'-monophosphate binding pocket, with predicted docking of compound P11. The binding of compounds M5 and P11 sterically hinders binding of the RNA molecule.



**Figure 2 | Small molecule binding and inhibition of *E. coli* NTH-RNase E.** (a) Discontinuous cleavage assays using the substrate pBR13-fl were carried out as described in Methods. *E. coli* NTH-RNase E was pre-incubated in the absence (control) or presence of the compounds indicated at the top of the panel at final concentrations of 5 mM (P10 and P11) and 20 mM (M5). Lanes numbered 1–5 correspond to samples taken at 0, 2, 5, 10 and 15 min following addition of substrate, respectively. The positions of bands corresponding to substrate (S) and products (P) are indicated on the right. The nominal  $IC_{50}$  values for each compound are indicated below each gel. (b) Surface plasmon resonance was used to monitor compound binding to immobilized NTH-RNase E. The concentrations of compound used were 0–2.5 mM for P11, 0–5 mM for M5 and 0–1.5 mM for P10. PBS with 5% DMSO was used as the running buffer. The binding data for each compound concentration at equilibrium is shown (red data points). The steady state fit to the data (black line) gives a  $K_D$  of  $\sim 1.5$  mM for P11,  $\sim 3$  mM for M5 and shows non-specific binding to NTH-RNase E for P10. Compounds P11 and M5 show evidence of beginning to plateau at higher concentrations indicating specific binding, whilst P10 does not.

100% (Fig. 4). Whether this enhancement of inhibition is additive or synergistic remains to be determined, but warrants further investigation. To gauge the specificity of inhibition, we found that the compounds shown to inhibit *E. coli* RNase E catalysis did not inhibit the activity of RNase A, an unrelated ribonuclease (Fig. 5).

## Discussion

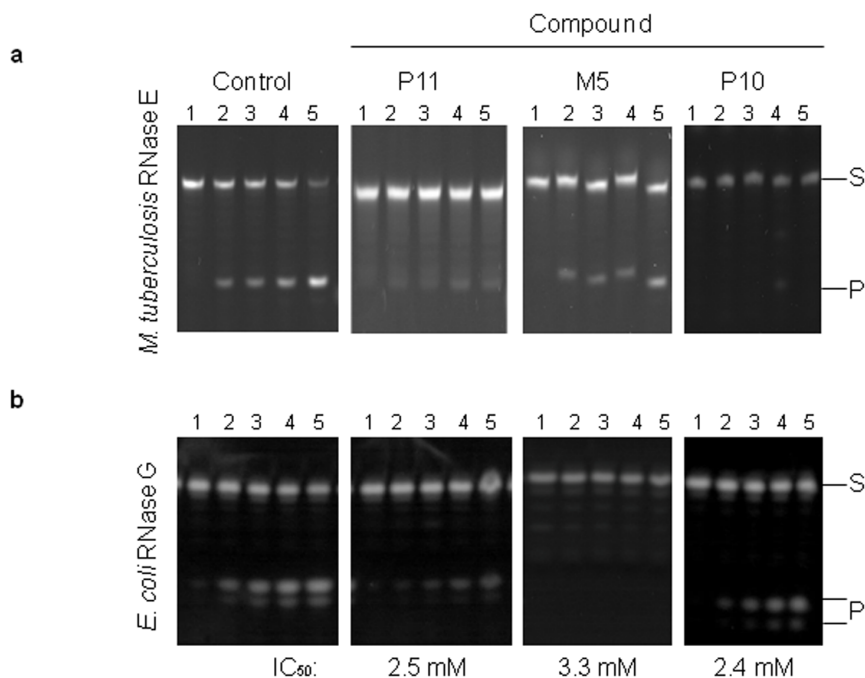
New and effective antimicrobials are needed to combat the growing number of antibiotic resistant bacteria. The essential enzyme RNase E represents a potential target for the generation of new antimicrobial leads. We have described herein, a method for the selection of small molecule inhibitors against RNase E, which is possible when the structure of the target protein is available. The 5' sensor and the site of catalysis were chosen as targets in the NTH of *E. coli* RNase E and compounds that were predicted to bind at these sites were

selected using VHTS with the combined application of eHiTS<sup>38</sup> and SPROUT<sup>37</sup>. At least some of the selected compounds were shown to specifically bind and inhibit catalysis by *E. coli* RNase E with  $K_D$  and  $IC_{50}$  values in the low millimolar range (Fig. 2 and Table 1). Furthermore, some of these same compounds can specifically bind and inhibit a homologue from *M. tuberculosis* and inhibit catalysis by *E. coli* RNase G, a paralogue of RNase E (Fig. 3), demonstrating a wider application for these compounds. In addition, inhibition of catalysis is specific for the RNase E family (Fig. 5). Although the  $K_D$  and  $IC_{50}$  values are relatively high, the approach has been validated and the compounds described here can be used as the starting material for developing better, higher affinity inhibitors. It may also be possible to use them in combination (Fig. 4). The best leads from this study for the development of specific small molecule inhibitors of RNase E would include M5, P6 and P11 (compound M8 became

**Table 1 | Apparent dissociation constants and  $IC_{50}$  values of compounds**

Compound	Steady State $K_D$ value (mM)	Nominal $IC_{50}$ RNase E (mM)	Nominal $IC_{50}$ RNase G (mM)
P6	$\sim 1.0$	$\sim 4.7$	$\sim 8.9$
P10	non-specific	$\sim 1.9$	$\sim 2.4$
P11	$\sim 1.5$	$\sim 1.8$	$\sim 2.5$
P16	$\sim 0.6$	NI	NI
M2	non-specific	NI	NI
M3	$\sim 0.6$	NI	NI
M5	$\sim 3.0$	$\sim 3.8$	$\sim 3.3$
M8	$\sim 3.5$	$\sim 3.2$	ND
M9	$\sim 2.0$	$\sim 18.0$	$\sim 24.0$

A list of the compounds referred to in the text that showed binding and/or inhibition of RNase E catalysis. The  $K_D$  values given are for binding to *E. coli* RNase E and the  $IC_{50}$  values are for inhibition of the *E. coli* enzymes.  $K_D$  and  $IC_{50}$  values were calculated as described in the Methods. ND = not determined. NI = no inhibition (up to 40 mM tested).



**Figure 3 | Inhibition of *M. tuberculosis* RNase E and *E. coli* RNase G by small molecules.** (a) Denaturing gel analysis of pBR13-fl cleavage by *M. tuberculosis* RNase E. Lanes numbered 1–5 correspond to samples taken at time 0, 2.5, 5, 10 and 30 min, respectively, in the absence of compound (control) and in the presence of 5 mM compound (indicated at the top of the panel). (b) The reaction conditions and labelling for the inhibition of RNase G are as Fig. 2a. Compounds were included in the reactions, as indicated, at final concentrations of 5 mM (P11), 20 mM (M5) and 2.5 mM (P10).

unavailable from the Maybridge catalogue during the course of this study).

The hit compounds themselves (Supplementary Table S1), although essentially used in this study as tool compounds in order to probe the ability of small molecules to modulate RNase E function, do indicate the potential ‘druggability’ of this system in terms of compliance with the Lipinski guidelines for drug likeness. Specifically, they are either sulfonamido (e.g. P6 and P11) or heterocyclic (e.g. M5), and have molecular weights under 500 (e.g. for P6, P11 and M5, molecular weight = 423, 394, and 420, respectively) with acceptable H-bond donor/acceptor patterns within their structures. The hydrophobic interactions that are usually formed between RNase E and the RNA are mimicked by the inhibitor molecules. For compound M5, the 3-chloro-5-trifluoromethyl pyridine ring is predicted to make hydrophobic interactions with F67 of RNase E and the pyrimidine-2, 4-dione ring is predicted to make hydrophobic interactions with the aliphatic part of K112 analogous to the contacts made to the RNA base immediately 3’ to the cleavage site. There is also the possibility of a hydrogen bond between the ester linkage of the acetylcarbamate and the side chain of K106 analogous to the hydrogen bond formed between the exocyclic oxygen of the base of the nucleotide 5’ to the cleavage site and K106 (Fig. 1d). The trimethylbenzene ring of compound P11 is predicted to make hydrophobic interactions with V128 analogous to the contacts made to the base of the 5’ end nucleotide. There are no obvious hydrogen bonding interactions between RNase E and the tosyl azanecarboxamide group of P11 that are analogous to those formed between T170, R169 and the RNA (Fig. 1e). Modifying this molecule to reintroduce these interactions could improve affinity and inhibition.

In addition to providing leads for new antimicrobials, the inhibitors can be used as part of chemical genetics strategies to dissect the contribution of members of the RNase E family. Finally, the approach described can be extended to identify inhibitors of other families of ribonucleases. For example, it has been recently used in work that will be reported elsewhere to select antibacterials that target 3’ to 5’ exonucleases.

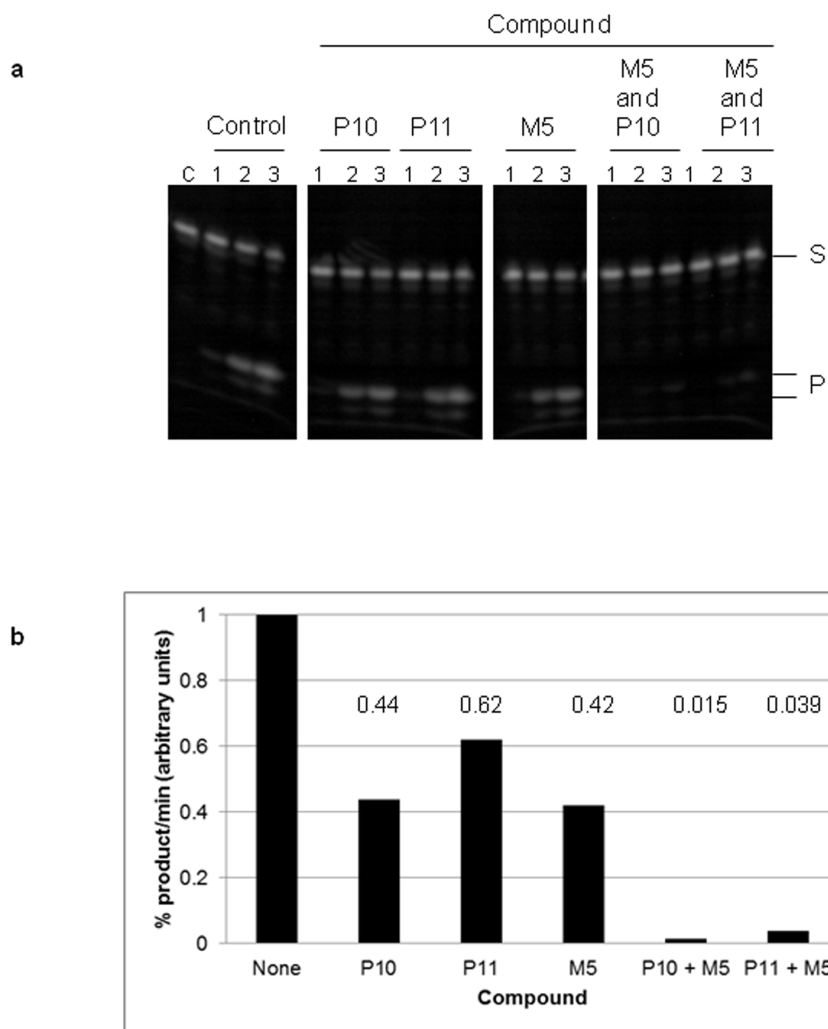
## Methods

**Compound-enzyme inhibition assays.** The NTH of *E. coli* RNase E (residues 1–529) and RNase G were purified as described previously<sup>21,40</sup>. The compounds were obtained from Maybridge and re-suspended in 100% DMSO. Discontinuous cleavage assays were done using a 3’ fluorescein-labelled, 5’-monophosphorylated version of BR13, a well-characterised substrate of RNase E, with the sequence 5’-GGGACAGU↓AUUUG<sup>44</sup>. *E. coli* NTH-RNase E was pre-incubated with and without the compounds at 37°C for 20 min before the addition of substrate in a buffer containing 25 mM Bis-Tris Propane (pH 8.3), 100 mM NaCl, 15 mM MgCl<sub>2</sub>, 0.1% Triton X-100, 1 mM DTT and 20% DMSO. The enzyme monomer and substrate concentrations at the start of the reaction were 0.5 and 62 nM, respectively. The inhibition assays with RNase G and RNase A (Sigma) were carried out as above. Reaction products were analysed by electrophoresis using a denaturing 15% polyacrylamide, sequencing-type gel. Detection was via a FLA-5100 scanner (Fuji). Substrate and product were quantified using AIDA software (Raytest Isotopenmessgerate GmbH). Initial rates of reaction at increasing compound concentrations were obtained by establishing the slope representing percentage product generated over time during the initial, linear phase of the reaction. IC<sub>50</sub> values were calculated by plotting the percentage inhibition of initial rate against compound concentration.

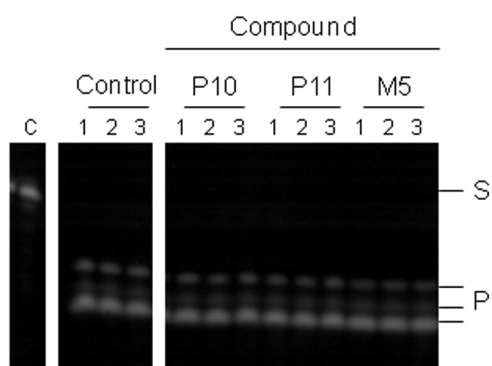
For *M. tuberculosis* RNase E (a kind gift from Prof. B. Luisi, University of Cambridge), 1 μM 3’ fluorescently-labelled, 5’ monophosphorylated BR13 was incubated with 50 nM RNase E with and without the compounds in buffer containing 25 mM Tris-HCl (pH 7.5), 100 mM NaCl, 15 mM MgCl<sub>2</sub>, 1 mM DTT and 5% DMSO at room temperature. Reactions were analysed by electrophoresis using denaturing 20% polyacrylamide gels and visualised using a UV transilluminator.

**Binding studies by SPR analysis.** *E. coli* and *M. tuberculosis* RNase E were immobilized covalently using amine coupling to the surface of a Biacore CM5 sensor chip (GE Healthcare). Immobilization levels were approximately 1500 RUs. Assessment of compound binding were conducted by injecting varying compound concentrations in PBS containing 5% DMSO at flow rates of 30–90 μl/min for ~60 s over the reference and test flow cells. A Biacore T100 instrument was used and the data collected was reference and buffer subtracted prior to steady state analysis using data fitting functions provided in the Biacore T100 Evaluation Software.

**eHiTS and SPROUT.** The eHiTS program has been described by Zsoldos *et al.*<sup>38</sup>. Briefly, eHiTS takes compounds from a library and calculates the optimal conformation each of these ligands can adopt in a cavity of a protein target. The eHiTS approach breaks each ligand into rigid fragments and flexible connecting chains and docks each rigid fragment into every possible place in the cavity. A score is calculated for each structure based upon the geometries of the ligand and the complementarity of surface points on the receptor and ligand: complementary surface points receive a positive score, while repulsive surface points receive a negative score. Other factors are also used to calculate the final score including steric clashes, depth of the cavity,



**Figure 4** | Enhanced inhibition of *E. coli* RNase E by co-incubation with compounds targeted to the 5' sensor and the catalytic site. (a) The reaction conditions and labelling are as Fig. 2a. Lanes numbered 1–3 correspond to samples taken at 0, 5 and 15 min following addition of substrate, respectively. Lane C contains substrate incubated without enzyme for 15 min. Compounds were included in the reactions at their *E. coli* RNase E IC<sub>50</sub> concentration; 1.9 mM P10, 1.8 mM P11 and 3.8 mM M5 and were included in combination at the same concentrations for M5 with P10 and M5 with P11. (b) Initial rates were obtained as described in Methods. The initial rate was then normalised to a value of 1 for the reaction containing no compound and represents the product generated in one minute during the initial phase of the reaction. The results are presented as a bar chart.



**Figure 5** | Incubation of small molecules with RNase A. Cleavage assays were performed essentially as described in Methods. RNase A was pre-incubated in the absence (control) or presence of the compounds indicated at the top of the panel at final concentrations of 5 mM (P10 and P11) and 20 mM (M5). Lanes numbered 1–3 correspond to samples taken at 0, 5 and 15 min following addition of substrate, respectively. Lane C contains substrate incubated without enzyme for 15 min. The positions of bands corresponding to substrate (S) and products (P) are indicated on the right.

solvation, intramolecular interactions in the ligand, and conformational strain energy of the ligand.

SPROUT<sup>37</sup> is a computer program that generates structures based upon a set of specified constraints. The approach firstly generates a skeleton based upon a set of primary constraints that includes definition of the target site and must satisfy steric and geometric constraints. This is followed by substitution of atoms in the skeleton to generate molecules with the required properties. The CAnGAROO module within SPROUT allows for the definition of potential binding pockets by detecting clefts, defined as a large inward facing area on the surface of the protein. The HIPPO module locates typical donor and acceptor atoms in the protein, intramolecular hydrogen bonds, hydrogen bonding atoms near to the surface of the receptor site and hydrogen bonding regions are computed with tolerances.

1. Condon, C. (ed.) *Molecular Biology of RNA Processing and Decay in Prokaryotes* 85 (Academic Press, Elsevier Inc, 2009).
2. Arraiano, C. M. *et al.* The critical role of RNA processing and degradation in the control of gene expression. *FEMS Microbiol. Rev.* **34**, 883–923 (2010).
3. Carpousis, A. J., Luisi, B. F. & McDowell, K. J. Endonucleolytic Initiation of mRNA Decay in *Escherichia coli*. *Prog Mol Biol Trans Sci.* **85**, 91–135 (2009).
4. Li, Z. W., Pandit, S. & Deutscher, M. P. RNase G (CafA protein) and RNase E are both required for the 5' maturation of 16S ribosomal RNA. *EMBO J.* **18**, 2878–2885 (1999).
5. Wachi, M., Umitsuki, G., Shimizu, M., Takada, A. & Nagai, K. *Escherichia coli* cafA gene encodes a novel RNase, designated as RNase G, involved in processing of the 5' end of 16S rRNA. *Biochem. Biophys. Res. Commun.* **259**, 483–488 (1999).



6. Clarke, J. E., Kime, L., Romero, A. D. & McDowall, K. J. Direct entry by RNase E is a major pathway for the degradation and processing of RNA in *Escherichia coli*. *Nucleic Acids Res.* **42**, 11733–11751 (2015).
7. Lee, K., Bernstein, J. A. & Cohen, S. N. RNase G complementation of *rne* null mutation identifies functional interrelationships with RNase E in *Escherichia coli*. *Mol. Microbiol.* **43**, 1445–1456 (2002).
8. Apirion, D. & Lassar, A. B. Conditional lethal mutant of *Escherichia coli* which affects processing of ribosomal RNA. *J. Biol. Chem.* **253**, 1738–1742 (1978).
9. Kuwano, M. *et al.* Gene affecting longevity of messenger RNA: Mutant of *Escherichia coli* with altered messenger RNA stability. *Mol. Gen. Genet.* **154**, 279–285 (1977).
10. Condon, C. & Putzer, H. The phylogenetic distribution of bacterial ribonucleases. *Nucleic Acids Res.* **30**, 5339–5346 (2002).
11. Danchin, A. A phylogenetic view of bacterial ribonucleases. *Molecular Biology of RNA Processing and Decay in Prokaryotes*. Condon, C. (ed.) **85**, 1–41 (Academic Press, Elsevier Inc, 2009).
12. Kaberdin, V. R., Singh, D. & Lin-Chao, S. Composition and conservation of the mRNA-degrading machinery in bacteria. *J. Biomed. Sci.* **18**, 23 (2011).
13. Khemici, V., Poljak, L., Luisi, B. F. & Carpousis, A. J. The RNase E of *Escherichia coli* is a membrane-binding protein. *Mol. Microbiol.* **70**, 799–813 (2008).
14. Callaghan, A. J. *et al.* Quaternary structure and catalytic activity of the *Escherichia coli* ribonuclease E amino-terminal catalytic domain. *Biochemistry* **42**, 13848–13855 (2003).
15. Callaghan, A. J. *et al.* “Zn-Link”: A metal-sharing interface that organizes the quaternary structure and catalytic site of the endoribonuclease, RNase E. *Biochemistry* **44**, 4667–4675 (2005).
16. Callaghan, A. J. *et al.* Structure of *Escherichia coli* RNase E catalytic domain and implications for RNA turnover. *Nature* **437**, 1187–1191 (2005).
17. Mackie, G. A. Ribonuclease E is a 5'-end-dependent endonuclease. *Nature* **395**, 720–723 (1998).
18. Subramanian, A. R. Structure and Functions of Ribosomal Protein-S1. *Prog. Nucleic Acid Res. Mol. Biol.* **28**, 101–142 (1983).
19. Suck, D. & Oefner, C. Structure of DNase I at 2.0 Å resolution suggests a mechanism for binding to and cutting DNA. *Nature* **321**, 620–625 (1986).
20. Kime, L., Jourdan, S. S., Stead, J. A., Hidalgo-Sastre, A. & McDowall, K. J. Rapid cleavage of RNA by RNase E in the absence of 5' monophosphate stimulation. *Mol. Microbiol.* **76**, 590–604 (2010).
21. Kime, L., Clarke, J. E., Romero, A. D., Grasby, J. A. & McDowall, K. J. Adjacent single-stranded regions mediate processing of tRNA precursors by RNase E direct entry. *Nucleic Acids Res.* **42**, 4577–4589 (2014).
22. Garrey, S. M. *et al.* Substrate binding and active site residues in RNases E and G: role of the 5' sensor. *J. Biol. Chem.* **284**, 31843–31850 (2009).
23. Walsh, A. P. *et al.* Cleavage of poly(A) tails on the 3' end of RNA by ribonuclease E of *Escherichia coli*. *Nucleic Acids Res.* **29**, 1864–1871 (2001).
24. Ghora, B. K. & Apirion, D. 5S ribosomal RNA is contained within a 25S ribosomal RNA that accumulates in mutants of *Escherichia coli* defective in processing of ribosomal RNA. *J. Mol. Biol.* **127**, 507–513 (1979).
25. Ono, M. & Kuwano, M. Conditional lethal mutation in an *Escherichia coli* strain with a longer chemical lifetime of messenger RNA. *J. Mol. Biol.* **129**, 343–357 (1979).
26. McDowall, K. J., Hernandez, R. G., Lin-Chao, S. & Cohen, S. N. The *ams-1* and *rne-3071* temperature-sensitive mutations in the *ams* gene are in close proximity to each other and cause substitutions within a domain that resembles a product of the *Escherichia coli* *mre* locus. *J. Bacteriol.* **175**, 4245–4249 (1993).
27. Ow, M. C. *et al.* RNase E levels in *Escherichia coli* are controlled by a complex regulatory system that involves transcription of the *rne* gene from three promoters. *Mol. Microbiol.* **43**, 159–171 (2002).
28. Mohanty, B. K. & Kushner, S. R. Rho-independent transcription terminators inhibit RNase P processing of the *secG* *leuU* and *metT* tRNA polycistronic transcripts in *Escherichia coli*. *Nucleic Acids Res.* **36**, 364–375 (2008).
29. Carpousis, A. J. The RNA degradosome of *Escherichia coli*: An mRNA-degrading machine assembled on RNase E. *Annu. Rev. Microbiol.* **61**, 71–87 (2007).
30. Marcaida, M. J., DePristo, M. A., Chandran, V., Carpousis, A. J. & Luisi, B. F. The RNA degradosome: Life in the fast lane of adaptive molecular evolution. *Trends Biochem. Sci.* **31**, 359–365 (2006).
31. Bleicher, K. H., Bohm, H. J., Muller, K. & Alanine, A. I. Hit and lead generation: Beyond high-throughput screening. *Nat. Rev. Drug. Discov.* **2**, 369–378 (2003).
32. Zelenko, O. *et al.* A novel fluorogenic substrate for ribonucleases: Synthesis and enzymatic characterization. *Nucleic Acids Res.* **22**, 2731–2739 (1994).
33. Jiang, X. Q. & Belasco, J. G. Catalytic activation of multimeric RNase E and RNase G by 5'-monophosphorylated RNA. *Proc. Natl. Acad. Sci. USA* **101**, 9211–9216 (2004).
34. Guner, O., Clement, O. & Kurogi, Y. Pharmacophore modeling and three dimensional database searching for drug design using catalyst: Recent advances. *Curr. Med. Chem.* **11**, 2991–3005 (2004).
35. Seifert, M. H. J., Kraus, J. & Kramer, B. Virtual high-throughput screening of molecular databases. *Curr. Opin. Drug Di. De.* **10**, 298–307 (2007).
36. Shoichet, B. K. Virtual screening of chemical libraries. *Nature* **432**, 862–865 (2004).
37. Gillet, V. J. *et al.* SPROUT: Recent developments in the de novo design of molecules. *J. Chem. Inf. Comput. Sci.* **34**, 207–217 (1994).
38. Zsoldos, Z., Reid, D., Simon, A., Sadjad, S. B. & Johnson, A. P. eHiTS: A new fast, exhaustive flexible ligand docking system. *J. Mol. Graphics Modell.* **26**, 198–212 (2007).
39. Guex, N. & Peitsch, M. C. SWISS-MODEL and the Swiss-PdbViewer: An environment for comparative protein modeling. *Electrophoresis* **18**, 2714–2723 (1997).
40. Jourdan, S. S. & McDowall, K. J. Sensing of 5' monophosphate by *Escherichia coli* RNase G can significantly enhance association with RNA and stimulate the decay of functional mRNA transcripts in vivo. *Mol. Microbiol.* **67**, 102–115 (2008).
41. Redko, Y. *et al.* Determination of the catalytic parameters of the N-terminal half of *Escherichia coli* ribonuclease E and the identification of critical functional groups in RNA substrates. *J. Biol. Chem.* **278**, 44001–44008 (2003).
42. Dye, C. & Williams, B. G. The population dynamics and control of tuberculosis. *Science* **328**, 856–861 (2010).
43. Koul, A., Arnoult, E., Lounis, N., Guillemont, J. & Andries, K. The challenge of new drug discovery for tuberculosis. *Nature* **469**, 483–490 (2011).
44. McDowall, K. J., Kaberdin, V. R., Wu, S. W., Cohen, S. N. & Lin-Chao, S. Site-specific RNase E cleavage of oligonucleotides and inhibition by stem-loops. *Nature* **374**, 287–290 (1995).

## Acknowledgments

We would like to thank Prof. Ben Luisi (University of Cambridge, UK) for the kind gift of purified *M. tuberculosis* RNase E, and Adam J. Roberts and Charlotte A. Henderson (University of Portsmouth) for technical assistance. This work was supported by BBSRC research grant funding [grant numbers BB/F013140/1 and BB/J016179/1 (to A.J.C.) and BB/1001751/1 (to K.J.M.)], a Royal Society research grant (to A.J.C.) and a Marie Curie Reintegration Grant from the European Commission, FP7 [grant number 249154 (to H.A.V.)].

## Author contributions

C.W.G.F. and D.M.A.G. performed the VHTS. H.A.V. and A.J.C. performed the SPR experiments and the analysis of *M. tuberculosis* RNase E. L.K., S.S.J. and D.M.A.G. performed initial inhibition analysis of *E. coli* RNase E by small molecules. L.K. performed IC<sub>50</sub> analysis and inhibition of RNase G and RNase A. L.K. and K.J.M. wrote the article with comment by others.

## Additional information

**Supplementary information** accompanies this paper at <http://www.nature.com/scientificreports>

**Competing financial interests:** The authors declare no competing financial interests.


**How to cite this article:** Kime, L. *et al.* The First Small-Molecule Inhibitors of Members of the Ribonuclease E Family. *Sci. Rep.* **5**, 8028; DOI:10.1038/srep08028 (2015).



This work is licensed under a Creative Commons Attribution 4.0 International License. The images or other third party material in this article are included in the article's Creative Commons license, unless indicated otherwise in the credit line; if the material is not included under the Creative Commons license, users will need to obtain permission from the license holder in order to reproduce the material. To view a copy of this license, visit <http://creativecommons.org/licenses/by/4.0/>



# SCIENTIFIC REPORTS



## **Erratum:** The First Small-Molecule Inhibitors of Members of the Ribonuclease E Family

Louise Kime, Helen A. Vincent, Deena M. A. Gendoo, Stefanie S. Jourdan, Colin W. G. Fishwick, Anastasia J. Callaghan & Kenneth J. McDowall

*Scientific Reports* 5:8028; doi: 10.1038/srep08028; published online 26 January 2015; updated on 13 July 2015

In the Supplementary Information file originally published with this Article, the chemical structures of P16 and P18 were truncated in Supplementary Table S1. These errors have been corrected in the Supplementary Information that now accompanies the Article.