

Organic coating on sulfate and soot particles during late Summer in the Svalbard Archipelago

Yu, Hua; Li, Weijun; Zhang, Yangmei; Tunved, Peter ; Dall'Osto, Manuel; Shen, Xiaojing; Sun, Junying; Zhang, Xiaoye; Zhang, Jianchao; Shi, Zongbo

DOI:

[10.5194/acp-19-10433-2019](https://doi.org/10.5194/acp-19-10433-2019)

License:

Creative Commons: Attribution (CC BY)

Document Version

Publisher's PDF, also known as Version of record

Citation for published version (Harvard):

Yu, H, Li, W, Zhang, Y, Tunved, P, Dall'Osto, M, Shen, X, Sun, J, Zhang, X, Zhang, J & Shi, Z 2019, 'Organic coating on sulfate and soot particles during late Summer in the Svalbard Archipelago', *Atmospheric Chemistry and Physics*, vol. 19, no. 15, pp. 10433–10446. <https://doi.org/10.5194/acp-19-10433-2019>

[Link to publication on Research at Birmingham portal](#)

Publisher Rights Statement:

Yu, H., Li, W., Zhang, Y., Tunved, P., Dall'Osto, M., Shen, X., Sun, J., Zhang, X., Zhang, J., and Shi, Z.: Organic coating on sulfate and soot particles during late summer in the Svalbard Archipelago, *Atmos. Chem. Phys.*, 19, 10433–10446, <https://doi.org/10.5194/acp-19-10433-2019>, 2019.

General rights

Unless a licence is specified above, all rights (including copyright and moral rights) in this document are retained by the authors and/or the copyright holders. The express permission of the copyright holder must be obtained for any use of this material other than for purposes permitted by law.

- Users may freely distribute the URL that is used to identify this publication.
- Users may download and/or print one copy of the publication from the University of Birmingham research portal for the purpose of private study or non-commercial research.
- User may use extracts from the document in line with the concept of 'fair dealing' under the Copyright, Designs and Patents Act 1988 (?)
- Users may not further distribute the material nor use it for the purposes of commercial gain.

Where a licence is displayed above, please note the terms and conditions of the licence govern your use of this document.

When citing, please reference the published version.

Take down policy

While the University of Birmingham exercises care and attention in making items available there are rare occasions when an item has been uploaded in error or has been deemed to be commercially or otherwise sensitive.

If you believe that this is the case for this document, please contact UBIRA@lists.bham.ac.uk providing details and we will remove access to the work immediately and investigate.



Organic coating on sulfate and soot particles during late summer in the Svalbard Archipelago

Hua Yu^{1,2}, Weijun Li², Yangmei Zhang³, Peter Tunved⁴, Manuel Dall'Osto⁵, Xiaojing Shen³, Junying Sun³, Xiaoye Zhang³, Jianchao Zhang⁶, and Zongbo Shi^{7,8}

¹Key Laboratory of Hangzhou City for Ecosystem Protection and Restoration, College of Life and Environmental Sciences, Hangzhou Normal University, 310036, Hangzhou, China

²Department of Atmospheric Sciences, School of Earth Sciences, Zhejiang University, 310027, Hangzhou, China

³Key Laboratory of Atmospheric Chemistry, Chinese Academy of Meteorological Sciences, 110016, Beijing, China

⁴Department of Environmental Science and Analytical Chemistry, Stockholm University, 10691, Stockholm, Sweden

⁵Institute of Marine Sciences, ICM-CSIC, Passeig Marítim de la Barceloneta, 37–49, 08003, Barcelona, Spain

⁶Key Laboratory of the Earth's Deep Interior, Institute of Geology and Geophysics, Chinese Academy of Sciences, 100029, Beijing, China

⁷School of Geography, Earth and Environmental Sciences, the University of Birmingham, Birmingham, UK

⁸Institute of Surface Earth System Science, Tianjin University, 300072, Tianjin, China

Correspondence: Weijun Li (liweijun@zju.edu.cn) and Zongbo Shi (z.shi@bham.ac.uk)

Received: 16 November 2018 – Discussion started: 4 February 2019

Revised: 8 July 2019 – Accepted: 22 July 2019 – Published: 15 August 2019

Abstract. Interaction of anthropogenic particles with radiation and clouds plays an important role in Arctic climate change. The mixing state of aerosols is a key parameter to influence aerosol radiation and aerosol–cloud interactions. However, little is known of this parameter in the Arctic, preventing an accurate representation of this information in global models. Here we used transmission electron microscopy with energy-dispersive X-ray spectrometry, scanning electron microscopy, nanoscale secondary ion mass spectrometry, and atomic forces microscopy to determine the size and mixing state of individual sulfate and carbonaceous particles at 100 nm to 2 μ m collected in the Svalbard Archipelago in summer. We found that 74 % by number of non-sea-salt sulfate particles were coated with organic matter (OM); 20 % of sulfate particles also had soot inclusions which only appeared in the OM coating. The OM coating is estimated to contribute 63 % of the particle volume on average. To understand how OM coating influences optical properties of sulfate particles, a Mie core–shell model was applied to calculate optical properties of individual sulfate particles. Our result shows that the absorption cross section of individual OM-coated particles significantly increased when assuming the OM coating as light-absorbing brown carbon.

Microscopic observations here suggest that OM modulates the mixing structure of fine Arctic sulfate particles, which may determine their hygroscopicity and optical properties.

1 Introduction

Surface temperatures are rising faster in the Arctic than the rest of globe (IPCC, 2013). Although increased human-induced emissions of long-lived greenhouse gases are certainly one of the driving factors, air pollutants, such as aerosols and ozone, are also important contributors to climate change in the Arctic (Law and Stohl, 2007; Shindell, 2007). Spatial and temporal variations of aerosol composition, size distribution, and sources of Arctic aerosols have been studied extensively in numerous ground-based, ship, and airborne observations and various atmospheric models (Brock et al., 2011; Burkart et al., 2017; Chang et al., 2011; Dall'Osto et al., 2017; Fu et al., 2008; Hara et al., 2003; Hegg et al., 2010; Iziomon et al., 2006; Karl et al., 2013; Latham et al., 2013; Leck and Bigg, 2008; Leck and Svensson, 2015; Moore et al., 2011; Raatikainen et al., 2015; Wöhrnschimmel et al., 2013; Winiger et al., 2017; Yang et al., 2018; Zangrando et

al., 2013). These studies show that regional pollutants and local natural aerosol production affect sea ice albedo and the heat balance of the atmosphere, especially in the summer when mid-latitude transport is not as frequent relative to that during the winter–spring Arctic Haze season (Hansen and Nazarenko, 2004; Jacob et al., 2010; Shindell, 2007).

Aerosol particles in the Arctic atmosphere are mainly composed of sea salt, sulfate, particulate organic matter (OM) with a small amount of ammonium, nitrate, black carbon (BC) (Hara et al., 2003; Quinn et al., 2007) and mineral dust particles (Dagsson-Waldhauserova et al., 2013). Sea salts, derived from the Arctic Ocean, are the dominant coarse particles ($> 1 \mu\text{m}$) in the Arctic atmosphere (Behrenfeldt et al., 2008; Chi et al., 2015). Compared to other types of aerosols, sea salt is the largest contributor to radiative forcing in remote ocean air (Wang et al., 2019). Natural sea salt particles can provide large surfaces for heterogeneous reaction with acidic gases in the Arctic air (Chi et al., 2015; Geng et al., 2010; Hara et al., 2003). Moreover, sea salt particles are an important source of cloud condensation nuclei (CCN) in the Arctic air (Abbatt et al., 2019); coarse dust particles in the Svalbard region have been observed to be occasionally influenced by local (Svalbard) and/or distant (e.g., Iceland, Greenland and Siberia) sources at high latitudes (Behrenfeldt et al., 2008). Tobo et al. (2019) showed that glacial outwash sediments in Svalbard (a proxy for glacially sourced dusts) due to the recent rapid and widespread retreat of glaciers have a remarkably high ice-nucleating ability under conditions relevant for mixed-phase cloud formation.

BC, commonly called “soot”, is derived from the combustion sources such as diesel engines, residential solid fuel, and open burning (Bond et al., 2013). Studies show BC in the Arctic absorbs solar radiation in the atmosphere and when deposited on snow (Iziomon et al., 2006; Koch and Hansen, 2005; Sand et al., 2013; Shindell, 2007). Maahn et al. (2017) found that BC concentration is enhanced below the clouds in the Arctic. This influences the mean effective radii of cloud droplets, which lead to the suppressed drizzle production and precipitation. Possible sources of BC particles in the Arctic include natural gas flaring (Qi et al., 2017), ship emissions (Browse et al., 2013; Weinbruch et al., 2012), and long-range transport from emissions of biomass burning and fossil fuels in the Northern Hemisphere (Winiger et al., 2016; Xu et al., 2017). Winiger et al. (2017) showed that most of the Arctic BC is from domestic activities (35 %) and transportation (38 %), with only minor contributions from gas flaring (6 %), power plants (9 %), and open fires (12 %).

OM is a significant component in Arctic aerosol (Quinn et al., 2007). More than 100 organic species have been detected in the Arctic aerosols and polyacids are the most abundant compound class, followed by phthalates, aromatic acids, fatty acids, fatty alcohols, sugars/sugar alcohols, and *n*-alkanes (Fu et al., 2008). Recently, certain organic aerosols, referred to as brown carbon (BrC), have been recognized as an important light-absorbing carbonaceous aerosol

in the troposphere (Alexander et al., 2008; Andreae and Gelencsér, 2006; Feng et al., 2013; Lack et al., 2012). BrC can be directly emitted from combustion sources or form in the atmosphere via photochemical aging (Jiang et al., 2019; Saleh et al., 2013; Updyke et al., 2012). Moreover, aging of secondary organic aerosols can significantly contribute to BrC during atmospheric transport (Laskin et al., 2015). Feng et al. (2013) estimated that on average, BrC accounts for 66 % of total OM mass globally and its light absorption is about 26 % of BC.

Sulfate is a dominant aerosol component in the Arctic air (Quinn et al., 2007). The Community Earth System Model simulations show that sources from East Asia have the largest contribution to the Arctic sulfate column burden, with an annual mean contribution of 27 %, followed by 11 %–13 % each from South Asia, the rest of the world (including the Arctic), and Russia–Belarus–Ukraine sources and 13 % from natural sources (Yang et al., 2018). Large amounts of secondary species including sulfate and OM not only change radiative forcing and number of CCN in Arctic atmosphere (Abbatt et al., 2019; Yang et al., 2018) but also influence optical, hygroscopic, and CCN activity of these internally mixed BC and mineral dust particles (Latham et al., 2013; Raatikainen et al., 2015; Zanatta et al., 2018).

BC and BrC are often internally mixed with other non-absorbing aerosols, such as sulfate (Lack et al., 2012; Laskin et al., 2015). Internal mixing means that a single particle simultaneously contains two or more types of aerosol components (Li et al., 2016). This internal mixing can enhance BC absorption by a factor of 2 (Bond et al., 2013) and change the activity of CCN in the Arctic atmosphere (Leck and Svensson, 2015; Martin et al., 2011). A few previous studies also looked at the mixing states of coarse aerosol particles in the Arctic troposphere (Behrenfeldt et al., 2008; Chi et al., 2015; Geng et al., 2010; Hara et al., 2003; Leck and Svensson, 2015; Moroni et al., 2017; Raatikainen et al., 2015; Sierau et al., 2014), but those of fine non-sea-salt particles, including the most important short-lived climate forcers – BC and BrC (Feng et al., 2013; Fu et al., 2008; Kirpes et al., 2018; Laskin et al., 2015; Leck and Svensson, 2015) – are poorly characterized. A poor understanding of mixing state of BC and BrC in individual particles prevents an accumulated simulation of the direct aerosol forcing and aerosol–cloud interactions in the Arctic (Browse et al., 2013; Samset et al., 2014; Zanatta et al., 2018).

In this study, individual aerosol particles were collected in Svalbard during 7–23 August 2012. We combined the data from various microscopic instruments to determine the size, composition, and mixing properties of individual particles, with a particular focus on sulfate and carbonaceous particles. Mie theory was used to test how OM coating influences the optical properties of sulfate particles in the Arctic when OM was assumed as BrC. The results are discussed in the context of aerosol radiation and aerosol–cloud interactions.

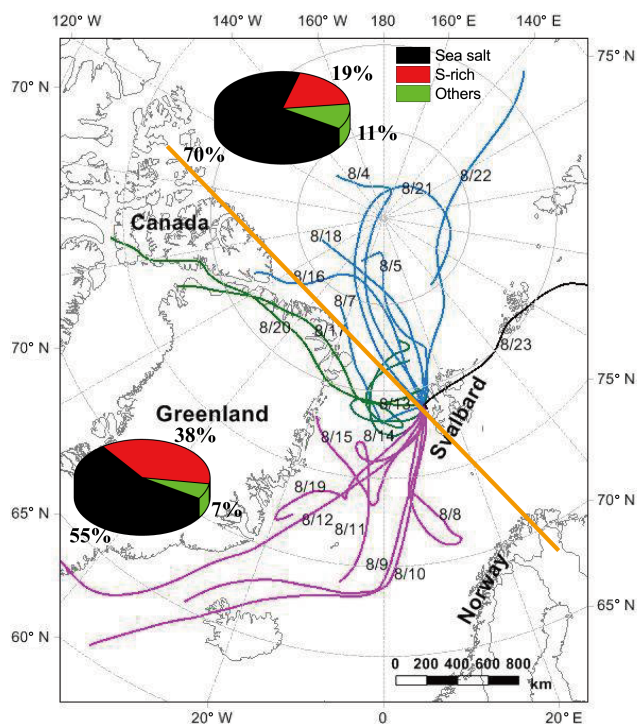


Figure 1. 72 h back trajectories of air masses at 500 m over Arctic Yellow River Station in Svalbard during 3–26 August 2012, and arriving time was set according to the sampling time. Air masses were divided into two groups by the yellow line: one group from the central Arctic Ocean and the other one from North America and Greenland. Pie charts show the number fractions of sea salt, S-rich, and other particles.

2 Experimental section

2.1 Field campaign

The Svalbard archipelago includes all landmasses between 74 and 81° north and 10 and 35° east (Fig. 1). The islands cover 63 000 km². Ny-Ålesund town is situated on the west coast of the largest island, Spitsbergen, and is 1200 km from the North Pole. It is a central platform for Arctic research.

The observation site is based at the Chinese Arctic Yellow River Station (78°55′ N, 11°56′ E) (Chi et al., 2015; Geng et al., 2010). The site is about 2 km away from the Zeppelin observatory station (78.9° N 11.88° E) run by the Ny-Ålesund Science Managers Committee. On the west coast of the island of Spitsbergen, Ny-Ålesund is a Norwegian research and monitoring infrastructure, hosting national and international research projects and programs. The Norwegian Polar Institute (NPI) runs the Sverdrup Research Station at the coast and Zeppelin Observatory at the Mountain 475 m a.s.l. (above sea level), and Sweden, Germany, France, Italy, Japan, China, England, The Netherlands, South Korea, and India are the other countries to have established long-term programs in Ny-Ålesund (<https://www.esrl.noaa.gov/>

psd/iasoa/stations/nyalesund, last access: 8 July 2019). Two to three samples were regularly collected at 09:00, 16:00, and 21:00 (local time) of each day, with a total of 46 samples during 7–23 August 2012.

A sampler containing a single-stage impactor with a 0.5 mm diameter jet nozzle (Genstar Electronic Technology, China) was used to collect individual particles by the air flow rate at 1.5 L min⁻¹. Aerosol particles were collected onto copper TEM grids coated with carbon film. This sampler has a collection efficiency of 31 % at 100 nm aerodynamic diameter and 50 % at 200 nm, assuming the density of the particles is 2 g cm⁻³. Sampling times varied from 20 min to 2 h depending on the loading of particles. After collection, each sample was placed in a sealed dry plastic tube and stored in a desiccator at 20 ± 3 % RH for analysis. Ambient laboratory conditions (17 % RH–23 % RH and 19–21 °C) are effective at preserving individual hygroscopic aerosol particles and reducing changes that would alter samples and subsequent data interpretation (Laskina et al., 2015). During the sampling period, meteorological data at the sampling site including pressure (*P*), relative humidity (RH), temperature (*T*), wind speed (WS), and wind direction (WD) were recorded every 5 min using a pocket weather meter (Kestrel 4500, Nielsen-Kellermann Inc., USA). Sample information including local sampling date and time and various meteorological conditions are listed in Table 1.

2.2 TEM measurement

Individual particle samples were examined by a JEOL JEM-2100 transmission electron microscopy operated at 200 kV with energy-dispersive X-ray spectrometry (TEM/EDS). TEM can observe the mixing structure of different aerosol components within an individual particle on the substrate because electron beams transmit through the specimen to form an image. EDS spectra are acquired for a maximum time of 30 s to minimize potential beam damage and collect particle X-ray spectra with sufficient intensity. TEM grids are made of copper (Cu) and covered by a carbon-reinforced substrate, so Cu is excluded from the quantitative analyses of the particles. Because of the substrate contribution, C content in the TEM grid coated by carbon film might be overestimated in EDS spectra of individual particles.

The distribution of aerosol particles on TEM grids was not uniform, with coarser particles occurring near the center and finer particles on the periphery. Therefore, to ensure that the analyzed particles are representative, five areas were chosen from the center to the periphery of the sampling spot on each grid. Through a labor-intensive operation, 2002 aerosol particles with diameter < 10 μm in 21 samples were analyzed by TEM/EDS (Table 1). To check the elemental composition of individual particles, EDS was manually used to obtain elemental spectra of individual particles. In the clean Arctic air, there are simple particle types including sea salt, sulfate, soot, OM, and mineral. Because soot particles have chain-

Table 1. Sampling information in Arctic area and their analysis.

Date	Local time	<i>T</i>	RH	<i>P</i>	WD	WS	TEM	EDS	SEM	AFM	NanoSIMS
7 Aug 2012	20:50–21:15	4.9	84	1009.0	296	4.1	43	10			
8 Aug 2012	08:23–08:48	4.9	81	1007.6	238	2.1	38	11			
9 Aug 2012	14:40–15:05	6.6	81	1003.9	129	6.5	146	50			12
9 Aug 2012	15:20–15:49	7.0	78	1003.5	120	7.3	130	26	20		
10 Aug 2012	00:15–00:40	7.3	80	998.6	135	8.9	121	23			
11 Aug 2012	09:10–09:35	6.2	94	997.0	303	3.3	128	50			10
11 Aug 2012	16:00–16:25	4.1	92	1002.0	327	4.6	156	55		6	
12 Aug 2012	15:25–15:50	5.7	83	1006.8	132	6.9	100	15	32		
13 Aug 2012	08:55–09:20	5.3	81	1009.6	91	1.1	113	16			
13 Aug 2012	14:15–14:40	4.5	90	1011.4	351	2.1	136	56			10
14 Aug 2012	09:50–10:20	5.0	85	1019.7	351	2.3	134	24			
14 Aug 2012	15:12–15:42	4.6	88	1020.5	117	2.6	121	26			
14 Aug 2012	21:17–21:47	4.8	84	1020.7	276	5.4	178	56		5	
15 Aug 2012	09:15–09:45	5.8	73	1019.6	135	3.7	165	60		6	
15 Aug 2012	15:00–15:33	6.8	70	1018.9	270	3.3	80	11			
17 Aug 2012	09:00–10:00	3.8	86	1017.1	116	0.3	30	15			
17 Aug 2012	14:50–15:20	3.7	85	1015.7	109	2.2	42	16			
21 Aug 2012	15:05–15:40	1.6	87	1003.7	314	6.8	46	18			
22 Aug 2012	08:55–09:30	2.8	78	999.2	331	2.8	49	19			
23 Aug 2012	09:00–09:40	3.4	64	998.0	136	6.9	21	9			
23 Aug 2012	20:35–21:08	3.8	59	1002.0	138	6.3	25	9			

like aggregation, it is not necessary to check their elemental composition. Sea salt particles display spherical or square shapes and are stable under the electron beam in TEM (Chi et al., 2015). Sulfate particles are spherical but flat on the substrate and produce unstable bubbles under the electron beam (Buseck and Posfai, 1999). TEM observations can also identify sulfate particles or sulfate with OM coating. TEM/EDS analysis is very time-consuming. Thus, we did not check the composition of every single particle analyzed. Instead, we randomly checked the elemental composition of 20–30 particles in each sample (Table 1). EDS spectra of 575 particles were manually selected and saved in the computer for elemental composition analysis. Particles examined by TEM were dry at the time of observation in the vacuum of the electron microscope. In our study, the effects of water and other semi-volatile organics were not considered as they evaporated in the vacuum.

Elemental mapping and line profiles of selected individual aerosol particles were also obtained from the EDS scanning operation mode of TEM (STEM). The STEM information clearly display elemental distribution in the targeted individual particles which cannot be provided by the above EDS analysis. Based on preliminary individual analysis, we further chose the typical samples containing abundant sulfate with OM coating for the STEM analysis. High-resolution elemental distribution in individual particles provides a detailed mixing structure of sulfate and OM in individual particles.

The iTEM software (Olympus soft imaging solutions GmbH, Germany) is an image analysis platform for electron

microscopy. In this study, it was used to manually or automatically obtain area, perimeter, and equivalent circle diameter (ECD) of individual particles. In these analyzed samples, we found there were abundant sulfate particles (~30% by number) in the 11 samples collected during 9–15 August 2012. In other samples, there are more sea salt particles with few particles. Based on the TEM observations, we selected the samples containing more sulfate particles for further microscopic analyses (see below).

2.3 NanoSIMS measurement

Because the sulfate particles in different samples collected in the Arctic had similar elemental composition and mixing state from the TEM observations, we selected three samples (Table 1) for nanoscale secondary ion mass spectrometry (NanoSIMS) analysis (CAMECA Instruments, Geneviers, France). A micro-caesium source was used to generate Cs⁺ primary ions, with an impact energy of 16 kV for sample interrogation. The primary beam was stepped across the sample to produce element-specific quantitative digital images. The Cs⁺ primary ion beam was used to obtain ¹⁶O⁻, ¹²C¹⁴N⁻, ¹⁴N¹⁶O⁻, ³²S⁻, ³⁵Cl⁻, and ¹⁶O²³Na⁻ ions in this study. The NanoSIMS analysis can perform ion mapping of particles with nanometer spatial resolution over a broad range of particle sizes (Fig. S1 in the Supplement). Because the substrate of TEM grid is carbon, CN⁻ is adopted to represent OM in individual particles (Chi et al., 2015; Ghosal et al., 2014). S⁻ is used to infer the presence of sulfates in

individual particles (Li et al., 2017). A total of 32 sulfate-containing particles were analyzed by the NanoSIMS.

2.4 SEM measurement

We used scanning electron microscopy (SEM) (Zeiss, ULTRA 55) with EDS to examine the vertical distribution of OM and sulfate in individual particles. TEM grids were mounted onto an aluminum SEM stub and directly observed in secondary electron image mode. SEM analysis was operated at 10 kv of extra high tension (EHT) and 9.7 mm of work distance. Processes such as sample moving, analysis region selection and imaging were controlled by computer. The specimen stage in SEM was tilted at the range of 0–7°, and then we vertically observed the thickness of OM coating and sulfate core on the substrate. Two typical samples that contain abundant sulfate particles were chosen for this analysis (Table 1).

2.5 AFM measurement

Atomic force microscopy (AFM) with a digital nanoscope IIIa instrument operating in the tapping mode was used to observe surface morphology of individual aerosol particles and measure particle thickness. The tapping AFM has a cantilever and conical tip of 10 nm radius. By using AFM, a general image of the particles is taken at 10 μm full scan size, which generally includes 1–2 particles depending on the exact location. In this study, we are only interested in the sulfate-containing particles. AFM provides surface information and morphology of 17 particles but no composition. Samples were firstly quickly examined by the TEM under low magnification mode to find sulfate-containing particles. Because TEM grids have coordinate letters, we can find the same particles in the AFM. This analysis provides a 3-D image of the sulfate-containing particles and their volume. After we obtained AFM images of sulfate particles, the nanoscope analysis software can automatically obtain bearing area (A) and bearing volume (V). This can then be converted into equivalent circle diameter (d , ECD) and equivalent spherical diameter (D , ESD).

$$A = \frac{4}{3}\pi r^2 = \frac{\pi d^2}{3} \rightarrow d = \sqrt{\frac{3A}{\pi}} \quad (1)$$

$$V = \frac{4}{3}\pi r^3 = \frac{4}{3} \times \frac{\pi D^3}{8} \rightarrow D = \sqrt[3]{\frac{6V}{\pi}} \quad (2)$$

ESD and ECD of sulfate-containing particles are well corrected. Using the linear correlation equation ($\text{ESD} = 0.38 \text{ECD}$), we can then correct the ESD of individual particles from TEM analysis to obtain the ECD (Chi et al., 2015).

2.6 Calculation of BrC optical properties

The refractive index used for the non-light-absorbing sulfate component was set to $m = 1.55$ at 550 nm (Seinfeld

and Pandis, 2006). The refractive index of OM (as BrC) is not known so we considered three scenarios: strongly absorbing ($1.65 - 0.03i$ at 550 nm), moderately absorbing ($1.65 - 0.003i$ at 550 nm), and non-absorbing OM (1.65 at 550 nm) (Feng et al., 2013). Here, we choose 550 nm as a case study to test how OM coating influences sulfate particles in Arctic air.

BHCOAT Mie code by Bohren and Huffman (1983) was used to calculate the optical properties, including scattering cross section (SCS), absorption cross section (ACS), and single scattering albedo (SSA), assuming a core–shell structure. We firstly calculated these parameters assuming a sulfate core and OM shell structure only (ignoring some of the particles that contain soot core). Because the Mie code can only calculate the core–shell structure or homogeneous model, we assume sulfate as a core and OM as a shell in individual particles to build the core–shell model. Based on the core–shell standard mode (Li et al., 2016), we can calculate optical properties of individual internally mixed particles.

2.7 Back trajectories of air masses and Lagrangian particle dispersion model

Three-day (72 h) back trajectories of air masses were generated using a Hybrid Single Particle Lagrangian Integrated Trajectory (HYSPPLIT) model at the Chinese Arctic Yellow River Station during August 2012. Here we selected an altitude of 500 m as the end point in each back trajectory (Fig. 1). Back trajectories for 50 and 1000 m a.s.l. are similar.

A Lagrangian particle dispersion model FLEXPART-WRF 3.1 (Brioude et al., 2013) was also used to examine the origin of particles. The FLEXPART-WRF model uses meteorological parameters from WRF dynamical simulation. The domain resolution is 5050 km with 64 vertical levels. The FLEXPART-WRF simulations were launched in a backward mode over 10 d, with the Chinese Arctic Yellow River Station as an origin. For each simulation (one per sample), 20 000 pseudo-particles were released in a small volume around the station position. Each single particle position evolution backward in time was determined by Lagrangian dispersion calculation.

Based on the TEM experiments and back trajectory of air masses (Fig. 1), we found that there were more S-rich with OM coating particles in the samples collected on 11, 12, 14, and 15 August 2012. Therefore, we further did the FLEXPART-WRF simulation of these four days (Fig. 2). The emission intensity in the Arctic area has been also shown in Fig. S2.

3 Results

3.1 Composition and source of aerosol particles

TEM/EDS analysis shows that O, Na, S, and Cl are dominant elements in individual particles (Fig. S3). On the basis

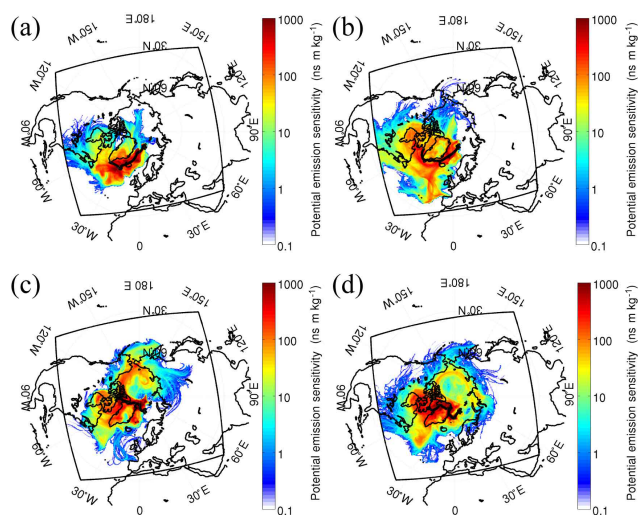


Figure 2. Simulated potential emission sensitivity (ns m kg^{-1}) from FLEXPART-WRF on 11, 12, 14, and 15 August 2012. Black square shows the WRF domain used to initiate the FLEXPART-WRF simulation.

of the composition and morphology of individual particles, we classified the particles into four major groups: Na-rich (i.e., NaCl , Na_2SO_4 , and NaNO_3), S-rich (i.e., ammonium sulfate and sulfuric acid), carbonaceous (soot and OM), and mineral dust particles. The classification criteria of different particle types and their sources have been described in a separate study (Li et al., 2016). S-rich particles representing secondary inorganic particles (e.g., SO_4^{2-} , NO_3^- , and NH_4^+) are converted from gaseous SO_2 , NO_x , and NH_3 . OM can be divided into primary organic matter (POM) and secondary organic matter (SOM). SOM is produced from the chemical oxidation of volatile organic compounds (VOCs) and often exhibits OM coating on S-rich particles (Li et al., 2016; Moffet et al., 2013; Riemer et al., 2019). Na-rich particles in the marine air are from sea spray and have typical near-cubic shape. Mineral dust particles from natural ground soil contain Si, Al, or Ca and have irregular shape. Soot particles, which contain C with minor O, appear as a chain-like aggregate of carbon-bearing spheres. Chi et al. (2015) studied the aging mechanism of sea salt particles. Here, we focused on non-sea-salt (NSS) particles including S-rich, soot, and OM particles. NSS particles and sulfate-containing particles account for $39 \pm 5\%$ and $29 \pm 7\%$ by number of all the 2002 particles analyzed (Fig. 3).

3.2 OM coating on sulfate particles

TEM observations revealed a common core-shell mixing structure in fine sulfate-containing particles (Fig. 4a). Elemental mapping of such internally mixed sulfate particles shows C signals in the coating (C map, Fig. 4b) and S and O signals in the center (S and O map, Fig. 4c, d). The elemental line profile of a sulfate particle also shows sulfate core and C

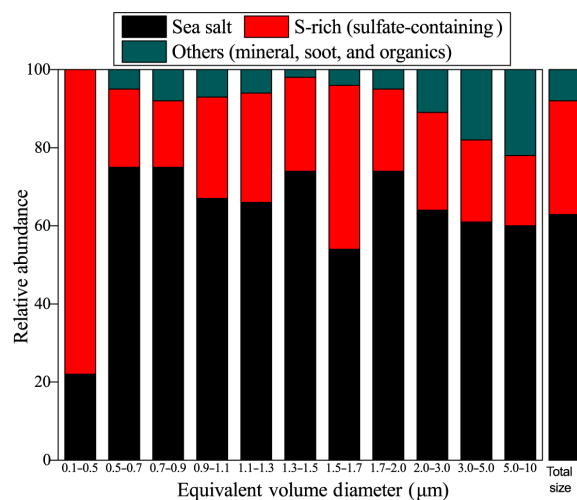


Figure 3. Relative abundances of typical individual aerosol particles in the analyzed samples. Sulfate-containing particles include all particles that are an internal mixture of sulfate and OM, with or without soot.

coating (Fig. S4). Furthermore, ion maps of individual particles from the NanoSIMS further show $^{12}\text{C}^{14}\text{N}^-$ signals in the coating (red color in Fig. 4e, f) and $^{32}\text{S}^-$ signals in the core (green color in Fig. 4e, g). These results provide strong evidence that the coating is OM and the core is sulfate.

A majority of the 781 analyzed NSS particles (74 % by particle number) have a sulfate core and OM coating (Figs. 4 and 5). Approximately 20 % of them also contain small soot inclusions but they only appeared in organic coating, rather than as the core (Fig. 5b). The mixing structure is different from our previous findings in polluted air where soot is normally mixed with sulfate instead of OM coating (Li et al., 2016). Moreover, we observed some chain-like soot aggregates (1.3 % in all analyzed particles) (Fig. S5) but they only occurred in three samples during the whole sampling period (Table 1). Considering the remoteness of the sampling site, such fresh soot particles are likely to be of local origin, for example, shipping and flaring (Gilgen et al., 2018; Peters et al., 2011).

TEM observations showed that some sulfate-containing particles had the unique morphology of a sulfate particle being surrounded by some smaller particles (Fig. 5a). They are often called “satellite” particles as they were distributed from the central particles which impacted on the substrate during sample collection. Satellite particles were observed around 16 % of the analyzed sulfate-containing particles (Fig. 5a) in the samples (Table 1) collected during 9–15 August. NanoSIMS analysis further showed that the satellite particles (Table 1) have strong $^{32}\text{S}^-$ (Fig. 6a, c) and $^{16}\text{O}^-$ signals (Fig. 6d) as well as weak $^{12}\text{C}^{14}\text{N}^-$ signals (Fig. 6a, b). Previous studies showed that the similar satellite particles are normally considered as acidic sulfate (Buseck and Posfai, 1999; Iwasaka et al., 1983). Our results show that

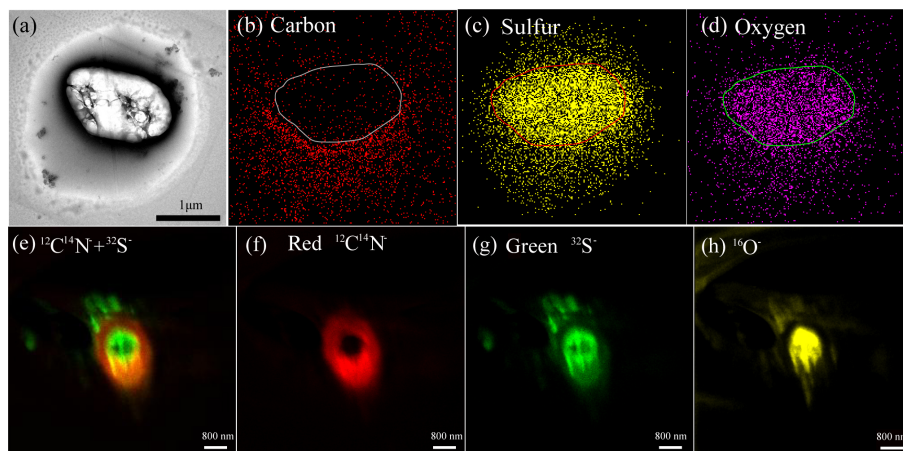


Figure 4. TEM images of a secondary particle and NanoSIMS intensity threshold maps of an aerosol particle with sulfate core and OM coating: (a) bright-field TEM image of an internally mixed particle, (b) elemental carbon, (c) sulfur and (d) oxygen maps of the internally mixed particle, (e) overlay of $^{12}\text{C}^{14}\text{N}^-$ and $^{32}\text{S}^-$ ion maps in an internally mixed particle, (f) CN^- map, (g) S^- , (h) O^- ion maps. Ion maps with a set of aerosol particles were shown in Fig. S1.

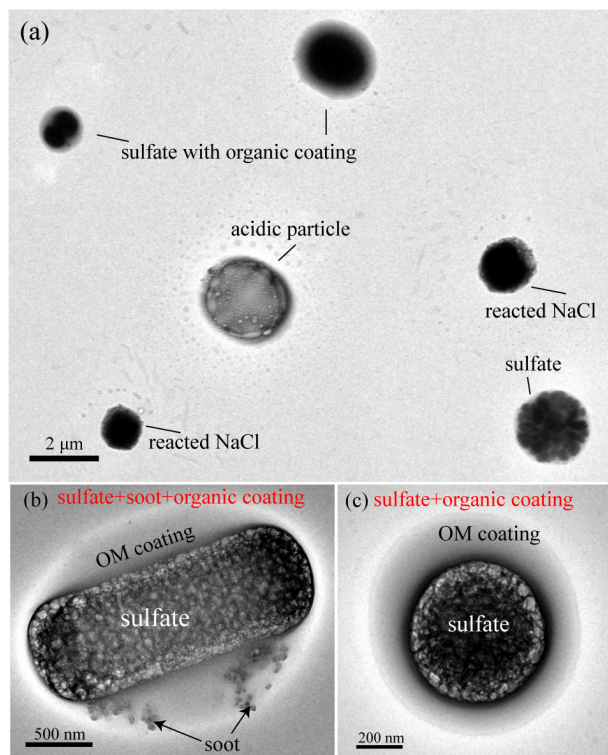


Figure 5. TEM images of individual particles containing sulfate, OM, and soot. (a) Low magnification TEM image showing sulfates, sulfate with OM coating, and reacted NaCl particles. (b) An internally mixed particle of sulfate and soot with OM coating. (c) A particle with sulfate core and OM coating.

these acidic satellites not only contain sulfuric acid but also some OM or organic acids. Indeed, Fu et al. (2008) found that polyacids are the most abundant organic compounds, followed by phthalates, aromatic acids, and fatty acids in Arctic aerosol particles. Based on the back trajectories of air masses and FLEXPART modeling, most air masses originate in the North America and Greenland during the sampling periods (Figs. 1 and 2). Figure 1 shows that these air masses brought abundant sulfate-containing particles into the sampling area in summertime.

AFM was used to obtain 3-D images of individual secondary particles impacting on the substrate. Figure 7a shows that the secondary particles normally have a smooth surface which is different from uneven surface of the Arctic fresh and aged NaCl particles (Chi et al., 2015). Furthermore, we observed particle thickness through tilting the specimen stage up to 75° in SEM. Figure 7a and b both show that the secondary particles look like thin pancake sticking on the substrate. Furthermore, the sections of two secondary particles in the AFM images show that the highest heights of particles are only 15% (green line) and 26% (red line) of the corresponding horizontal diameter (Fig. 7a). These results show that the shape of individual particles was modified when they impacted on the substrate following the airflow. Therefore, the measured ECDs of individual particles in TEM images are much larger than the real particle diameter. To calibrate the particle diameter, we obtained the volume of dry particles on the substrate and then calculated their ESD in the AFM images (Fig. 7c). ESD distribution of the secondary Arctic particles displayed a peak at 340 nm, ranging from 100 to 2000 nm (Fig. 7d). The core particles, as sulfate or soot, had a peak at 240 and 120 nm, respectively (Fig. 7d). It is estimated that OM on average accounted for $63 \pm 23\%$ of the dry-sulfate-containing particle volume. Our result shows that

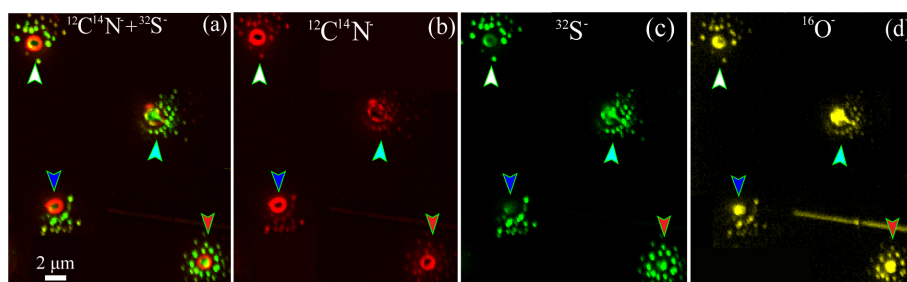


Figure 6. NanoSIMS intensity threshold maps of individual aerosol particles surrounded by satellite particles: (a) overlay of $^{12}\text{C}^{14}\text{N}^-$ and $^{32}\text{S}^-$ ion maps of individual particles, (b) CN^- , (c) S^- , and (d) O^- maps. Four particles were indicated by white, pink, blue, and red arrows.

the OM volume increases following the particle size increase (Fig. S6).

4 Discussion

4.1 Mixing mechanism of organic, soot, and sulfate

Lagrangian particle dispersion modeling using the FLEXPART-WRF 3.1 showed that air masses arriving at the sampling site during our field measurement periods likely originated from the Greenland and North America (Fig. 2). Previous studies reported that air masses from North America or Greenland during the summer contain higher concentrations of black carbon, OM, and sulfate (Burkart et al., 2017; Chang et al., 2011; Fu et al., 2008; Moore et al., 2011; Park et al., 2013). Indeed, there is strong emission intensity of OC and SO_2 around the Arctic area from the emission simulation as shown in Fig. S2. However, Weinbruch et al. (2012) observed soot particles when cruise ships were present in the area around Ny-Ålesund town. It is possible that minor soot particles are from the ship emissions and most of them are transported from outside the Arctic area in the free troposphere (Fig. S2).

The sulfate core–OM shell structure observed in the Arctic summer atmosphere is similar to those in the background or rural air in other places (Li et al., 2016; Moffet et al., 2013). Based on the images from electron microscopy, we can infer that OM coating thickness in the Arctic air was comparable with that in rural places but higher than that in urban places. During transport, organic coatings on sulfate were considered as the SOM and their masses increase following particle aging and growth (Li et al., 2016; Moffet et al., 2013; Sierau et al., 2014). Figures 1 and 2 show that most particles in the air masses are transported from North America. The sulfate or OM particles with soot inclusions are probably formed in a similar way to those found elsewhere (Li et al., 2016) – e.g., soot particles may have acted as nuclei for secondary sulfate or organic uptake during their transports (Riemer et al., 2009). Similarly, besides the OM coating in the Arctic particles, Leck and Svensson (2015) found biogenic aerosols like gel aggregate containing bacterium in ultrafine particles.

However, we did not find any gel-like particles in the samples because our sampler had very low efficiency for ultrafine particles.

TEM images show that most of the internally mixed sulfate-containing particles display sulfate core and OM coating on the substrate (Figs. 4a and 5b, c). Knowledge of the phase separation in individual particles is important to understand particle hygroscopic properties, heterogeneous reactions of reactive gases on the particle surface, and organic aging (You et al., 2012). It is possible that the thick OM coatings were consistently built up during the long-range transport of sulfate-containing particles and part of the SOM in the coating likely formed in Arctic area. Indeed, there are various sources of organic precursors during the Arctic area, such as biogenic VOCs from ice melting and open water (Dall’Osto et al., 2017) and anthropogenic VOCs from shipping emissions in summertime (Gilgen et al., 2018). The dependence of OM volume on particle size (Fig. S6) suggests that the suspended sulfate particles are initially an important surface for SOM formation. Moreover, the presence of OM coating in 74 % sulfate particles indicates that SOM on the surfaces of fine particles may govern the possible heterogeneous reactions between reactive gases and sulfate-containing particles in the Arctic air.

It should be noted that most SOM not only occurred on the surfaces of sulfate-containing particles but also its mass (mean mass at 63 ± 23 %) dominated in individual particles (Fig. 7d). The OM dominating in individual particles can influence the IN and CCN activities of secondary sulfate-containing particles (Latham et al., 2013; Martin et al., 2011). For example, some studies found that an increase in organic mass fraction in particles of a certain size would lead to a suppression of the Arctic CCN activity (Leck and Svensson, 2015; Martin et al., 2011). Moreover, OM on particle surfaces can significantly influence hygroscopicity and IN activity of sulfate-containing particles (Wang et al., 2012).

4.2 Potential impact of OM on optical properties of sulfate-containing particles

The internal mixing of soot, sulfate, and OM can change optical properties of individual particles in the atmosphere. Re-

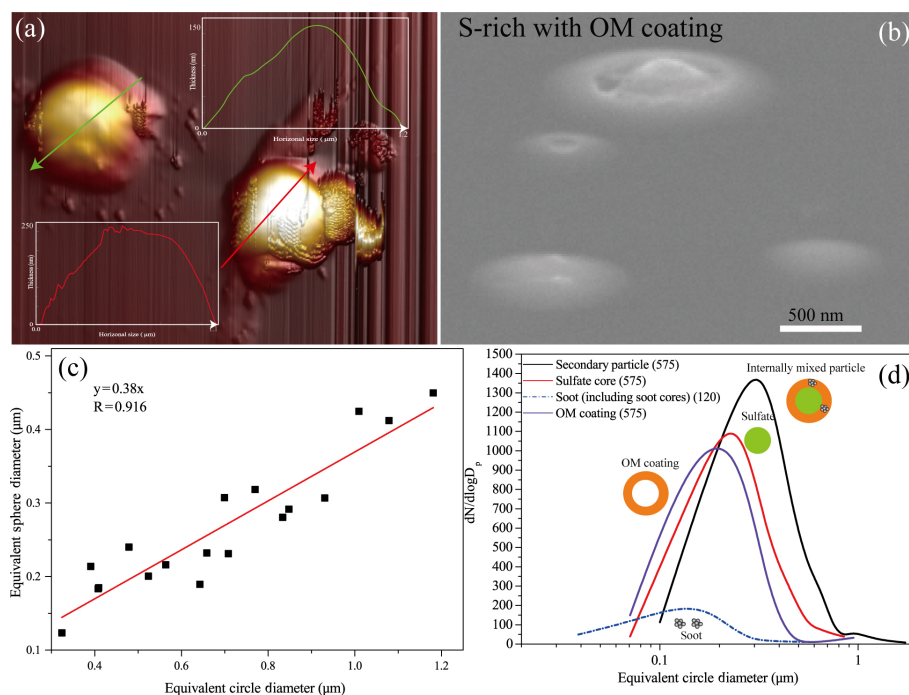


Figure 7. AFM image and calculated diameter of individual particles. **(a)** 3-D AFM image of sulfate-containing particles. The colored arrows represent the cross sections where the particle heights are measured (see inset figures). **(b)** SEM image of S-rich particles with OM coating obtained from 75° tilt of the SEM specimen stage. **(c)** The near-linear relationships between ECD and ESD based on S-rich particles with OM coating by atomic force microscopy. **(d)** Size distribution of individual particle with OM coating and sulfate core based on the estimated ESD diameter from TEM image.

cent studies showed that BrC has been detected in the OM in the polluted and clean air and even in the upper troposphere (Laskin et al., 2015; Wang et al., 2018). Feng et al. (2013) further calculated the contribution to be up to 19 % of the optical absorption of the strongly absorbing BrC in global simulations, which is second to the absorbing BC aerosols. Various colored OM (e.g., nitrated/polycyclic aromatics and phenols), referred to as BrC, were detected in the Arctic atmosphere in different seasons (Fu et al., 2008; Wöhrnschimmel et al., 2013; Zangrando et al., 2013) and in surface ice or snowpacks (Browse et al., 2013; Doherty et al., 2013; Hegg et al., 2010). We also noticed that the $^{12}\text{C}^{14}\text{N}^-$ signal occurred in all analyzed OM coating in sulfate-containing particles (Fig. 4e–f). $^{12}\text{C}^{14}\text{N}^-$ from NanoSIMS is indicative of the presence of nitrogen-containing organics in the detected materials (Herrmann et al., 2007). Figure 4 showed that the nitrogen-containing OM was more or less homogeneously distributed in the OM coating in individual particles. This suggests that some of the OM in the coating has the potential to act as BrC (Jiang et al., 2019; Laskin et al., 2015).

To understand how OM coating influences optical properties of sulfate-containing particles, we make an assumption that OM coating is strongly absorbing (case 1), moderately absorbing (case 2) or non-absorbing BrC (case 3) with a refractive index of $1.65 - 0.03i$, $1.65 - 0.003i$, and 1.65 at 550 nm, as in Feng et al. (2013). Based on the size mea-

surements shown in Fig. 7d, we can calculate the volume of sulfate and OM within each particle. We input the volume of each component and the corresponding refractive index into the Mie code and then calculated optical properties of individual sulfate-containing particles in the samples. Based on the optical data statistics of 575 particles, Fig. 8a shows that if the OM coating is strongly absorbing BrC (referred to case Abs1), the average absorption cross section (ACS) of individual particles is estimated to be $2.67 \times 10^{-14} \text{ m}^2$. This value is 8.30 times higher than the aerosol ACS ($3.22 \times 10^{-15} \text{ m}^2$) when assuming that the BrC is moderately absorbing (referred to as case Abs2, Fig. 8a). However, the scattering cross section (SCS) of individual particles only shows a small change (Fig. 8b). Figure 8c also shows that the SSAs of individual particles are 0.92, 0.99, and 1 when assuming the OM to be strongly, moderately and non-absorbing BrC (cases SSA1 to SSA3). These results suggest that whether we consider organic coating as BrC may have a significant influence on the absorption properties of individual sulfate-containing particles.

In this study, we explored the relationship between the ACS of individual particles and particle diameters. Interestingly, Fig. 8d shows that the ACS of individual fine OM-coating sulfate particles increased with particle size. This suggests that the ACS of individual particles may increase as they grow and age in the atmosphere.

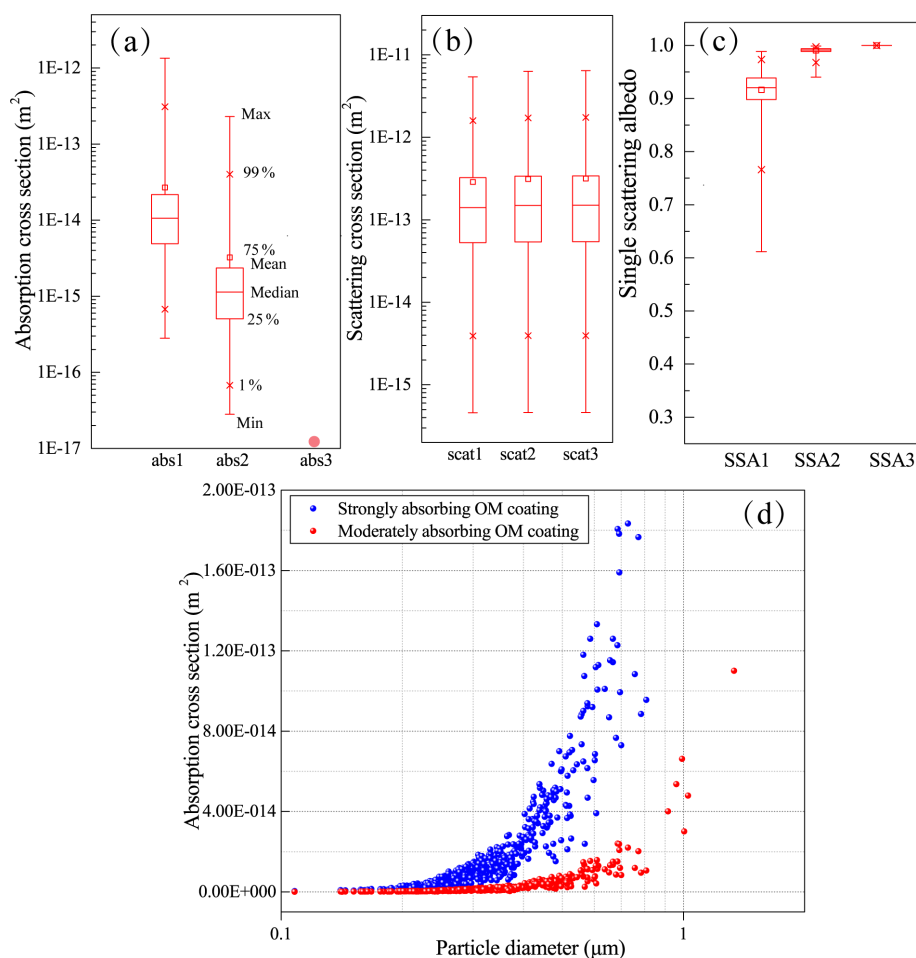


Figure 8. Optical properties of box-and-whisker plots showing optical parameters of all analyzed particles assuming sulfate core and BrC shell (not considering soot cores in the particles). **(a)** Scattering cross section. **(b)** Absorption cross section. **(c)** Single scattering albedo. Top to bottom markers in the box-and-whisker represent max, 99 %, 75 %, mean, median, 25 %, 1 %, and min values. **(d)** Absorption cross section along with particle diameter assuming strongly absorbing BrC and moderately absorbing BrC as the particle OM coating. Abs1, abs2 and abs3 represent the BrC with highly, moderately and weakly absorbing properties.

Current climate models estimated the radiative force of Arctic BC (Sand et al., 2013; Shindell, 2007; Winiger et al., 2017; Zanatta et al., 2018), but none specifically considered the optical properties of Arctic BrC. Our study revealed the OM coating on individual sulfate particles, which should be considered in aerosol radiation effect and cloud–aerosol interaction simulations in the models.

5 Summary

A range of individual particle observation techniques, such as TEM/EDS, STEM, SEM, NanoSIMS, and AFM, were applied to study S-rich, soot, and OM particles in the Arctic atmosphere in the summer of 2012. Sulfate-containing particles account for approximately $29 \pm 7\%$ by number of all analyzed particles. TEM and NanoSIMS showed that individual sulfate-containing particles have OM coating with sul-

fate as the core. The SOM on the surfaces of fine particles may affect heterogeneous reactions between reactive gases and sulfate particles in the Arctic air. Furthermore, 20 % of the sulfate-containing particles also contain small soot inclusions but they only appeared in organic coating.

Size distribution of the secondary Arctic particles displayed a peak at 340 nm, ranging from 100 to 2000 nm. The core particles, as sulfate or soot, had a peak at 240 and 120 nm, respectively. OM coating on average contributes $63 \pm 23\%$ by volume to the dry NSS particles. We also found that the OM coating may have a significant influence on the absorption properties of individual particles in the Arctic air, depending on the optical properties of the OM.

Data availability. Data are available by contacting the corresponding authors.

Supplement. The supplement related to this article is available online at: <https://doi.org/10.5194/acp-19-10433-2019-supplement>.

Author contributions. WL and ZS designed the study. YZ and XS collected aerosol particles. WL, HY, and JZ contributed laboratory experiments and data analysis. HY and WL performed optical calculation and wrote part of first draft. PT and MD provided the online measurement data of new particle formation and growth. JS and XZ coordinated the field campaign. All authors commented and edited the paper.

Competing interests. The authors declare that they have no conflict of interest.

Acknowledgements. We thank Boris Quennehen for providing data from the FLEXPART-WRF. This work was funded by the National Natural Science Foundation of China (41622504, 41575116, 31700475) and the Hundred Talents Program in Zhejiang University. Zongbo Shi acknowledges funding from NERC (NE/S00579X/1).

Financial support. This research has been supported by the National Natural Science Foundation of China (grant nos. 41575116, 41622504 and 31700475) and the NERC (grant no. NE/S00579X/1).

Review statement. This paper was edited by Hailong Wang and reviewed by two anonymous referees.

References

- Abbatt, J. P. D., Leaitch, W. R., Aliabadi, A. A., Bertram, A. K., Blanchet, J.-P., Boivin-Rioux, A., Bozem, H., Burkart, J., Chang, R. Y. W., Charette, J., Chaubey, J. P., Christensen, R. J., Cirisan, A., Collins, D. B., Croft, B., Dionne, J., Evans, G. J., Fletcher, C. G., Galí, M., Ghahremaninezhad, R., Girard, E., Gong, W., Gosselin, M., Gourdal, M., Hanna, S. J., Hayashida, H., Herber, A. B., Hesarakis, S., Hoor, P., Huang, L., Hussherr, R., Irish, V. E., Keita, S. A., Kodros, J. K., Köllner, F., Kolonjari, F., Kunkel, D., Ladino, L. A., Law, K., Lévassieur, M., Libois, Q., Liggio, J., Lizotte, M., Macdonald, K. M., Mahmood, R., Martin, R. V., Mason, R. H., Miller, L. A., Moravek, A., Mortenson, E., Mungall, E. L., Murphy, J. G., Namazi, M., Norman, A.-L., O'Neill, N. T., Pierce, J. R., Russell, L. M., Schneider, J., Schulz, H., Sharma, S., Si, M., Staebler, R. M., Steiner, N. S., Thomas, J. L., von Salzen, K., Wentzell, J. J. B., Willis, M. D., Wentworth, G. R., Xu, J.-W., and Yakobi-Hancock, J. D.: Overview paper: New insights into aerosol and climate in the Arctic, *Atmos. Chem. Phys.*, 19, 2527–2560, <https://doi.org/10.5194/acp-19-2527-2019>, 2019.
- Alexander, D. T. L., Crozier, P. A., and Anderson, J. R.: Brown Carbon Spheres in East Asian Outflow and Their Optical Properties, *Science*, 321, 833–836, 2008.
- Andreae, M. O. and Gelencsér, A.: Black carbon or brown carbon? The nature of light-absorbing carbonaceous aerosols, *Atmos. Chem. Phys.*, 6, 3131–3148, <https://doi.org/10.5194/acp-6-3131-2006>, 2006.
- Behrenfeldt, U., Krejci, R., Ström, J., and Stohl, A.: Chemical properties of Arctic aerosol particles collected at the Zeppelin station during the aerosol transition period in May and June of 2004, *Tellus B*, 60, 405–415, 2008.
- Bohren, C. F. and Huffman, D. R.: Absorption and scattering of light by small particles, John Wiley & Sons, Inc., New York, USA, 1983.
- Bond, T. C., Doherty, S. J., Fahey, D. W., Forster, P. M., Berntsen, T., DeAngelo, B. J., Flanner, M. G., Ghan, S., Kärcher, B., Koch, D., Kinne, S., Kondo, Y., Quinn, P. K., Sarofim, M. C., Schultz, M. G., Schulz, M., Venkataraman, C., Zhang, H., Zhang, S., Bellouin, N., Guttikunda, S. K., Hopke, P. K., Jacobson, M. Z., Kaiser, J. W., Klimont, Z., Lohmann, U., Schwarz, J. P., Shindell, D., Storelvmo, T., Warren, S. G., and Zender, C. S.: Bounding the role of black carbon in the climate system: A scientific assessment, *J. Geophys. Res.*, 118, 5380–5552, 2013.
- Brioude, J., Arnold, D., Stohl, A., Cassiani, M., Morton, D., Seibert, P., Angevine, W., Evan, S., Dingwell, A., Fast, J. D., Easter, R. C., Pisso, I., Burkart, J., and Wotawa, G.: The Lagrangian particle dispersion model FLEXPART-WRF version 3.1, *Geosci. Model Dev.*, 6, 1889–1904, <https://doi.org/10.5194/gmd-6-1889-2013>, 2013.
- Brock, C. A., Cozic, J., Bahreini, R., Froyd, K. D., Middlebrook, A. M., McComiskey, A., Brioude, J., Cooper, O. R., Stohl, A., Aikin, K. C., de Gouw, J. A., Fahey, D. W., Ferrare, R. A., Gao, R.-S., Gore, W., Holloway, J. S., Hübler, G., Jefferson, A., Lack, D. A., Lance, S., Moore, R. H., Murphy, D. M., Nenes, A., Novelli, P. C., Nowak, J. B., Ogren, J. A., Peischl, J., Pierce, R. B., Pilewskie, P., Quinn, P. K., Ryerson, T. B., Schmidt, K. S., Schwarz, J. P., Sodemann, H., Spackman, J. R., Stark, H., Thomson, D. S., Thornberry, T., Veres, P., Watts, L. A., Warneke, C., and Wollny, A. G.: Characteristics, sources, and transport of aerosols measured in spring 2008 during the aerosol, radiation, and cloud processes affecting Arctic Climate (ARCPAC) Project, *Atmos. Chem. Phys.*, 11, 2423–2453, <https://doi.org/10.5194/acp-11-2423-2011>, 2011.
- Browse, J., Carslaw, K. S., Schmidt, A., and Corbett, J. J.: Impact of future Arctic shipping on high-latitude black carbon deposition, *Geophys. Res. Lett.*, 40, 4459–4463, 2013.
- Burkart, J., Willis, M. D., Bozem, H., Thomas, J. L., Law, K., Hoor, P., Aliabadi, A. A., Köllner, F., Schneider, J., Herber, A., Abbatt, J. P. D., and Leaitch, W. R.: Summertime observations of elevated levels of ultrafine particles in the high Arctic marine boundary layer, *Atmos. Chem. Phys.*, 17, 5515–5535, <https://doi.org/10.5194/acp-17-5515-2017>, 2017.
- Buseck, P. R. and Posfai, M.: Airborne minerals and related aerosol particles: Effects on climate and the environment, *P. Natl. Acad. Sci. USA*, 96, 3372–3379, 1999.
- Chang, R. Y.-W., Leck, C., Graus, M., Müller, M., Paatero, J., Burkart, J. F., Stohl, A., Orr, L. H., Hayden, K., Li, S.-M., Hansel, A., Tjernström, M., Leaitch, W. R., and Abbatt, J. P. D.: Aerosol composition and sources in the central Arctic Ocean during ASCOS, *Atmos. Chem. Phys.*, 11, 10619–10636, <https://doi.org/10.5194/acp-11-10619-2011>, 2011.

- Chi, J. W., Li, W. J., Zhang, D. Z., Zhang, J. C., Lin, Y. T., Shen, X. J., Sun, J. Y., Chen, J. M., Zhang, X. Y., Zhang, Y. M., and Wang, W. X.: Sea salt aerosols as a reactive surface for inorganic and organic acidic gases in the Arctic troposphere, *Atmos. Chem. Phys.*, 15, 11341–11353, <https://doi.org/10.5194/acp-15-11341-2015>, 2015.
- Dagsson-Waldhauserova, P., Arnalds, O., and Olafsson, H.: Long-term frequency and characteristics of dust storm events in Northeast Iceland (1949–2011), *Atmos. Environ.*, 77, 117–127, 2013.
- Dall’Osto, M., Beddows, D. C. S., Tunved, P., Krejci, R., Ström, J., Hansson, H. C., Yoon, Y. J., Park, K.-T., Becagli, S., Udisti, R., Onasch, T., O’Dowd, C. D., Simó, R., and Harrison, R. M.: Arctic sea ice melt leads to atmospheric new particle formation, *Sci. Rep.-UK*, 7, 3318, <https://doi.org/10.1038/s41598-017-03328-1>, 2017.
- Doherty, S. J., Grenfell, T. C., Forsström, S., Hegg, D. L., Brandt, R. E., and Warren, S. G.: Observed vertical redistribution of black carbon and other insoluble light-absorbing particles in melting snow, *J. Geophys. Res.*, 118, 5553–5569, 2013.
- Feng, Y., Ramanathan, V., and Kotamarthi, V. R.: Brown carbon: a significant atmospheric absorber of solar radiation?, *Atmos. Chem. Phys.*, 13, 8607–8621, <https://doi.org/10.5194/acp-13-8607-2013>, 2013.
- Fu, P., Kawamura, K., and Barrie, L. A.: Photochemical and Other Sources of Organic Compounds in the Canadian High Arctic Aerosol Pollution during Winter-Spring, *Environ. Sci. Technol.*, 43, 286–292, 2008.
- Geng, H., Ryu, J., Jung, H.-J., Chung, H., Ahn, K.-H., and Ro, C.-U.: Single-Particle Characterization of Summertime Arctic Aerosols Collected at Ny-Alesund, Svalbard, *Environ. Sci. Technol.*, 44, 2348–2353, 2010.
- Ghosal, S., Weber, P. K., and Laskin, A.: Spatially resolved chemical imaging of individual atmospheric particles using nanoscale imaging mass spectrometry: insight into particle origin and chemistry, *Anal. Methods-UK*, 6, 2444–2451, 2014.
- Gilgen, A., Huang, W. T. K., Ickes, L., Neubauer, D., and Lohmann, U.: How important are future marine and shipping aerosol emissions in a warming Arctic summer and autumn?, *Atmos. Chem. Phys.*, 18, 10521–10555, <https://doi.org/10.5194/acp-18-10521-2018>, 2018.
- Hansen, J. and Nazarenko, L.: Soot climate forcing via snow and ice albedos, *P. Natl. Acad. Sci. USA*, 101, 423–428, 2004.
- Hara, K., Yamagata, S., Yamanouchi, T., Sato, K., Herber, A., Iwasaka, Y., Nagatani, M., and Nakata, H.: Mixing states of individual aerosol particles in spring Arctic troposphere during ASTAR 2000 campaign, *J. Geophys. Res.*, 108, 4209, <https://doi.org/10.1029/2002JD002513>, 2003.
- Hegg, D. A., Warren, S. G., Grenfell, T. C., Doherty, S. J., and Clarke, A. D.: Sources of light-absorbing aerosol in arctic snow and their seasonal variation, *Atmos. Chem. Phys.*, 10, 10923–10938, <https://doi.org/10.5194/acp-10-10923-2010>, 2010.
- Herrmann, A. M., Ritz, K., Nunan, N., Clode, P. L., Pett-Ridge, J., Kilburn, M. R., Murphy, D. V., O’Donnell, A. G., and Stockdale, E. A.: Nano-scale secondary ion mass spectrometry – A new analytical tool in biogeochemistry and soil ecology: A review article, *Soil Biol. Biochem.*, 39, 1835–1850, 2007.
- IPCC: Clouds and Aerosols, in: *Climate Change 2013: The Physical Science Basis. Contribution of Working Group I to the Fifth Assessment Report of the Intergovernmental Panel on Climate Change*, 571–657, Cambridge, UK and New York, NY, 2013.
- Iwasaka, Y., Minoura, H., and Nagaya, K.: The transport and spatial scale of Asian dust-storm clouds: A case study of the dust-storm event of April 1979, *Tellus B*, 35, 189–196, 1983.
- Iziomon, M. G., Lohmann, U., and Quinn, P. K.: Summertime pollution events in the Arctic and potential implications, *J. Geophys. Res.*, 111, D12206, <https://doi.org/10.1029/2005JD006223>, 2006.
- Jacob, D. J., Crawford, J. H., Maring, H., Clarke, A. D., Dibb, J. E., Emmons, L. K., Ferrare, R. A., Hostetler, C. A., Russell, P. B., Singh, H. B., Thompson, A. M., Shaw, G. E., McCauley, E., Pederson, J. R., and Fisher, J. A.: The Arctic Research of the Composition of the Troposphere from Aircraft and Satellites (ARCTAS) mission: design, execution, and first results, *Atmos. Chem. Phys.*, 10, 5191–5212, <https://doi.org/10.5194/acp-10-5191-2010>, 2010.
- Jiang, H., Frie, A. L., Lavi, A., Chen, J. Y., Zhang, H., Bahreini, R., and Lin, Y.-H.: Brown Carbon Formation from Nighttime Chemistry of Unsaturated Heterocyclic Volatile Organic Compounds, *Environ. Sci. Tech. Lett.*, 6, 184–190, <https://doi.org/10.1021/acs.estlett.9b00017>, 2019.
- Karl, M., Leck, C., Coz, E., and Heintzenberg, J.: Marine nanogels as a source of atmospheric nanoparticles in the high Arctic, *Geophys. Res. Lett.*, 40, 3738–3743, 2013.
- Kirpes, R. M., Bondy, A. L., Bonanno, D., Moffet, R. C., Wang, B., Laskin, A., Ault, A. P., and Pratt, K. A.: Secondary sulfate is internally mixed with sea spray aerosol and organic aerosol in the winter Arctic, *Atmos. Chem. Phys.*, 18, 3937–3949, <https://doi.org/10.5194/acp-18-3937-2018>, 2018.
- Koch, D. and Hansen, J.: Distant origins of Arctic black carbon: A Goddard Institute for Space Studies ModelE experiment, *J. Geophys. Res.*, 110, D04204, <https://doi.org/10.1029/2004JD005296>, 2005.
- Lack, D. A., Langridge, J. M., Bahreini, R., Cappa, C. D., Middlebrook, A. M., Schwarz, J. P.: Brown carbon and internal mixing in biomass burning particles, *P. Natl. Acad. Sci. USA*, 109, 14802–14807, 2012.
- Laskin, A., Laskin, J., and Nizkorodov, S. A.: Chemistry of Atmospheric Brown Carbon, *Chem. Rev.*, 115, 4355–4382, 2015.
- Laskina, O., Morris, H. S., Grandquist, J. R., Estillore, A. D., Stone, E. A., Grassian, V. H., and Tivanski, A. V.: Substrate-Deposited Sea Spray Aerosol Particles: Influence of Analytical Method, Substrate, and Storage Conditions on Particle Size, Phase, and Morphology, *Environ. Sci. Technol.*, 49, 13447–13453, 2015.
- Latham, T. L., Beyersdorf, A. J., Thornhill, K. L., Winstead, E. L., Cubison, M. J., Hecobian, A., Jimenez, J. L., Weber, R. J., Anderson, B. E., and Nenes, A.: Analysis of CCN activity of Arctic aerosol and Canadian biomass burning during summer 2008, *Atmos. Chem. Phys.*, 13, 2735–2756, <https://doi.org/10.5194/acp-13-2735-2013>, 2013.
- Law, K. S. and Stohl, A.: Arctic Air Pollution: Origins and Impacts, *Science*, 315, 1537–1540, 2007.
- Leck, C. and Bigg, E. K.: Comparison of sources and nature of the tropical aerosol with the summer high Arctic aerosol, *Tellus B*, 60, 118–126, 2008.
- Leck, C. and Svensson, E.: Importance of aerosol composition and mixing state for cloud droplet activation over the Arc-

- tic pack ice in summer, *Atmos. Chem. Phys.*, 15, 2545–2568, <https://doi.org/10.5194/acp-15-2545-2015>, 2015.
- Li, W., Sun, J., Xu, L., Shi, Z., Riemer, N., Sun, Y., Fu, P., Zhang, J., Lin, Y., Wang, X., Shao, L., Chen, J., Zhang, X., Wang, Z., and Wang, W.: A conceptual framework for mixing structures in individual aerosol particles, *J. Geophys. Res.*, 121, 13784–13798, 2016.
- Li, W., Xu, L., Liu, X., Zhang, J., Lin, Y., Yao, X., Gao, H., Zhang, D., Chen, J., Wang, W., Harrison, R. M., Zhang, X., Shao, L., Fu, P., Nenes, A., and Shi, Z.: Air pollution–aerosol interactions produce more bioavailable iron for ocean ecosystems, *Sci. Adv.*, 3, e1601749, <https://doi.org/10.1126/sciadv.1601749>, 2017.
- Maahn, M., de Boer, G., Creamean, J. M., Feingold, G., McFarquhar, G. M., Wu, W., and Mei, F.: The observed influence of local anthropogenic pollution on northern Alaskan cloud properties, *Atmos. Chem. Phys.*, 17, 14709–14726, <https://doi.org/10.5194/acp-17-14709-2017>, 2017.
- Martin, M., Chang, R. Y.-W., Sierau, B., Sjogren, S., Swietlicki, E., Abbatt, J. P. D., Leck, C., and Lohmann, U.: Cloud condensation nuclei closure study on summer arctic aerosol, *Atmos. Chem. Phys.*, 11, 11335–11350, <https://doi.org/10.5194/acp-11-11335-2011>, 2011.
- Moffet, R. C., Rödel, T. C., Kelly, S. T., Yu, X. Y., Carroll, G. T., Fast, J., Zaveri, R. A., Laskin, A., and Gilles, M. K.: Spectro-microscopic measurements of carbonaceous aerosol aging in Central California, *Atmos. Chem. Phys.*, 13, 10445–10459, <https://doi.org/10.5194/acp-13-10445-2013>, 2013.
- Moore, R. H., Bahreini, R., Brock, C. A., Froyd, K. D., Cozic, J., Holloway, J. S., Middlebrook, A. M., Murphy, D. M., and Nenes, A.: Hygroscopicity and composition of Alaskan Arctic CCN during April 2008, *Atmos. Chem. Phys.*, 11, 11807–11825, <https://doi.org/10.5194/acp-11-11807-2011>, 2011.
- Moroni, B., Cappelletti, D., Crocchianti, S., Becagli, S., Caiazza, L., Traversi, R., Udisti, R., Mazzola, M., Markowicz, K., Ritter, C., and Zielinski, T.: Morphochemical characteristics and mixing state of long range transported wildfire particles at Ny-Ålesund (Svalbard Islands), *Atmos. Environ.*, 156, 135–145, 2017.
- Park, K., Kim, G., Kim, J.-S., Yoon, Y.-J., Cho, H.-J., and Ström, J.: Mixing State of Size-Selected Submicrometer Particles in the Arctic in May and September 2012, *Environ. Sci. Technol.*, 48, 909–919, 2013.
- Peters, G. P., Nilssen, T. B., Lindholt, L., Eide, M. S., Glomsrød, S., Eide, L. I., and Fuglestad, J. S.: Future emissions from shipping and petroleum activities in the Arctic, *Atmos. Chem. Phys.*, 11, 5305–5320, <https://doi.org/10.5194/acp-11-5305-2011>, 2011.
- Qi, L., Li, Q., Li, Y., and He, C.: Factors controlling black carbon distribution in the Arctic, *Atmos. Chem. Phys.*, 17, 1037–1059, <https://doi.org/10.5194/acp-17-1037-2017>, 2017.
- Quinn, P. K., Shaw, G., Andrews, E., Dutton, E. G., Ruoho-Airola, T., and Gong, S. L.: Arctic haze: current trends and knowledge gaps, *Tellus B*, 59, 99–114, 2007.
- Raatikainen, T., Brus, D., Hyvärinen, A.-P., Svensson, J., Asmi, E., and Lihavainen, H.: Black carbon concentrations and mixing state in the Finnish Arctic, *Atmos. Chem. Phys.*, 15, 10057–10070, <https://doi.org/10.5194/acp-15-10057-2015>, 2015.
- Riemer, N., West, M., Zaveri, R. A., and Easter, R. C.: Simulating the evolution of soot mixing state with a particle resolved aerosol model, *J. Geophys. Res.*, 114, D09202, <https://doi.org/10.1029/2008JD011073>, 2009.
- Riemer, N., Ault, A. P., West, M., Craig, R. L., and Curtis, J. H.: Aerosol Mixing State: Measurements, Modeling, and Impacts, *Rev. Geophys.*, 57, 187–249, <https://doi.org/10.1029/2018RG000615>, 2019.
- Saleh, R., Hennigan, C. J., McMeeking, G. R., Chuang, W. K., Robinson, E. S., Coe, H., Donahue, N. M., and Robinson, A. L.: Absorptivity of brown carbon in fresh and photo-chemically aged biomass-burning emissions, *Atmos. Chem. Phys.*, 13, 7683–7693, <https://doi.org/10.5194/acp-13-7683-2013>, 2013.
- Samset, B. H., Myhre, G., Herber, A., Kondo, Y., Li, S.-M., Moteki, N., Koike, M., Oshima, N., Schwarz, J. P., Balkanski, Y., Bauer, S. E., Bellouin, N., Berntsen, T. K., Bian, H., Chin, M., Diehl, T., Easter, R. C., Ghan, S. J., Iversen, T., Kirkevåg, A., Lamarque, J.-F., Lin, G., Liu, X., Penner, J. E., Schulz, M., Seland, Ø., Skeie, R. B., Stier, P., Takemura, T., Tsigaridis, K., and Zhang, K.: Modelled black carbon radiative forcing and atmospheric lifetime in AeroCom Phase II constrained by aircraft observations, *Atmos. Chem. Phys.*, 14, 12465–12477, <https://doi.org/10.5194/acp-14-12465-2014>, 2014.
- Sand, M., Berntsen, T. K., Kay, J. E., Lamarque, J. F., Seland, Ø., and Kirkevåg, A.: The Arctic response to remote and local forcing of black carbon, *Atmos. Chem. Phys.*, 13, 211–224, <https://doi.org/10.5194/acp-13-211-2013>, 2013.
- Seinfeld, J. and Pandis, S.: *Atmospheric Chemistry and Physics: From air pollution to climate change*, 2nd Edn., 1–1203, John Wiley & Son, Inc., Hoboken, New Jersey, 2006.
- Shindell, D.: Local and remote contributions to Arctic warming, *Geophys. Res. Lett.*, 34, L14704, <https://doi.org/10.1029/2007GL030221>, 2007.
- Sierau, B., Chang, R. Y.-W., Leck, C., Paatero, J., and Lohmann, U.: Single-particle characterization of the high-Arctic summertime aerosol, *Atmos. Chem. Phys.*, 14, 7409–7430, <https://doi.org/10.5194/acp-14-7409-2014>, 2014.
- Tobo, Y., Adachi, K., DeMott, P. J., Hill, T. C. J., Hamilton, D. S., Mahowald, N. M., Nagatsuka, N., Ohata, S., Uetake, J., Kondo, Y., and Koike, M.: Glacially sourced dust as a potentially significant source of ice nucleating particles, *Nat. Geosci.*, 12, 253–258, 2019.
- Updyke, K. M., Nguyen, T. B., and Nizkorodov, S. A.: Formation of brown carbon via reactions of ammonia with secondary organic aerosols from biogenic and anthropogenic precursors, *Atmos. Environ.*, 63, 22–31, 2012.
- Wang, B., Laskin, A., Roedel, T., Gilles, M. K., Moffet, R. C., Tivanski, A. V., and Knopf, D. A.: Heterogeneous ice nucleation and water uptake by field-collected atmospheric particles below 273 K, *J. Geophys. Res.*, 117, D00V19, <https://doi.org/10.1029/2012JD017446>, 2012.
- Wang, X., Heald, C. L., Liu, J., Weber, R. J., Campuzano-Jost, P., Jimenez, J. L., Schwarz, J. P., and Perring, A. E.: Exploring the observational constraints on the simulation of brown carbon, *Atmos. Chem. Phys.*, 18, 635–653, <https://doi.org/10.5194/acp-18-635-2018>, 2018.
- Wang, Z., Bi, L., Yi, B., and Zhang, X.: How the Inhomogeneity of Wet Sea Salt Aerosols Affects Direct Radiative Forcing, *Geophys. Res. Lett.*, 46, 1805–1813, 2019.
- Weinbruch, S., Wiesemann, D., Ebert, M., Schütze, K., Kallenborn, R., and Ström, J.: Chemical composition and sources of aerosol particles at Zeppelin Mountain (Ny Ålesund, Svalbard): An electron microscopy study, *Atmos. Environ.*, 49, 142–150, 2012.

- Winiger, P., Andersson, A., Eckhardt, S., Stohl, A., and Gustafsson, Ö.: The sources of atmospheric black carbon at a European gateway to the Arctic, *Nat. Commun.*, *7*, 12776, <https://doi.org/10.1038/ncomms12776>, 2016.
- Winiger, P., Andersson, A., Eckhardt, S., Stohl, A., Semiletov, I. P., Dudarev, O. V., Charkin, A., Shakhova, N., Klimont, Z., Heyes, C., and Gustafsson, Ö.: Siberian Arctic black carbon sources constrained by model and observation, *P. Natl. Acad. Sci. USA*, *114*, E1054–E1061, 2017.
- Wöhrenschiemmel, H., MacLeod, M., and Hungerbühler, K.: Emissions, Fate and Transport of Persistent Organic Pollutants to the Arctic in a Changing Global Climate, *Environ. Sci. Technol.*, *47*, 2323–2330, 2013.
- Xu, J.-W., Martin, R. V., Morrow, A., Sharma, S., Huang, L., Leaitch, W. R., Burkart, J., Schulz, H., Zangrando, M., Willis, M. D., Henze, D. K., Lee, C. J., Herber, A. B., and Abbatt, J. P. D.: Source attribution of Arctic black carbon constrained by aircraft and surface measurements, *Atmos. Chem. Phys.*, *17*, 11971–11989, <https://doi.org/10.5194/acp-17-11971-2017>, 2017.
- Yang, Y., Wang, H., Smith, S. J., Easter, R. C., and Rasch, P. J.: Sulfate Aerosol in the Arctic: Source Attribution and Radiative Forcing, *J. Geophys. Res.*, *123*, 1899–1918, 2018.
- You, Y., Renbaum-Wolff, L., Carreras-Sospedra, M., Hanna, S. J., Hiranuma, N., Kamal, S., Smith, M. L., Zhang, X., Weber, R. J., Shilling, J. E., Dabdub, D., Martin, S. T., and Bertram, A. K.: Images reveal that atmospheric particles can undergo liquid–liquid phase separations, *P. Natl. Acad. Sci. USA*, *109*, 13188–13193, 2012.
- Zanatta, M., Laj, P., Gysel, M., Baltensperger, U., Vratolis, S., Eleftheriadis, K., Kondo, Y., Dubuisson, P., Winiarek, V., Kazadzis, S., Tunved, P., and Jacobi, H.-W.: Effects of mixing state on optical and radiative properties of black carbon in the European Arctic, *Atmos. Chem. Phys.*, *18*, 14037–14057, <https://doi.org/10.5194/acp-18-14037-2018>, 2018.
- Zangrando, R., Barbaro, E., Zennaro, P., Rossi, S., Kehrwald, N. M., Gabrieli, J., Barbante, C., and Gambaro, A.: Molecular Markers of Biomass Burning in Arctic Aerosols, *Environ. Sci. Technol.*, *47*, 8565–8574, 2013.