

# The neural dynamics of hierarchical Bayesian causal inference in multisensory perception

Rohe, Tim; Ehlis, Ann-Christine; Noppeney, Uta

DOI:

[10.1038/s41467-019-09664-2](https://doi.org/10.1038/s41467-019-09664-2)

License:

Creative Commons: Attribution (CC BY)

*Document Version*

Publisher's PDF, also known as Version of record

*Citation for published version (Harvard):*

Rohe, T, Ehlis, A-C & Noppeney, U 2019, 'The neural dynamics of hierarchical Bayesian causal inference in multisensory perception', *Nature Communications*, vol. 10, no. 1, 1907. <https://doi.org/10.1038/s41467-019-09664-2>

[Link to publication on Research at Birmingham portal](#)

## General rights

Unless a licence is specified above, all rights (including copyright and moral rights) in this document are retained by the authors and/or the copyright holders. The express permission of the copyright holder must be obtained for any use of this material other than for purposes permitted by law.

- Users may freely distribute the URL that is used to identify this publication.
- Users may download and/or print one copy of the publication from the University of Birmingham research portal for the purpose of private study or non-commercial research.
- User may use extracts from the document in line with the concept of 'fair dealing' under the Copyright, Designs and Patents Act 1988 (?)
- Users may not further distribute the material nor use it for the purposes of commercial gain.

Where a licence is displayed above, please note the terms and conditions of the licence govern your use of this document.

When citing, please reference the published version.

## Take down policy

While the University of Birmingham exercises care and attention in making items available there are rare occasions when an item has been uploaded in error or has been deemed to be commercially or otherwise sensitive.

If you believe that this is the case for this document, please contact [UBIRA@lists.bham.ac.uk](mailto:UBIRA@lists.bham.ac.uk) providing details and we will remove access to the work immediately and investigate.

ARTICLE

<https://doi.org/10.1038/s41467-019-09664-2>

OPEN

# The neural dynamics of hierarchical Bayesian causal inference in multisensory perception

Tim Rohe<sup>1</sup>, Ann-Christine Ehlis<sup>1,2</sup> & Uta Noppeney <sup>3</sup>

Transforming the barrage of sensory signals into a coherent multisensory percept relies on solving the binding problem – deciding whether signals come from a common cause and should be integrated or, instead, segregated. Human observers typically arbitrate between integration and segregation consistent with Bayesian Causal Inference, but the neural mechanisms remain poorly understood. Here, we presented people with audiovisual sequences that varied in the number of flashes and beeps, then combined Bayesian modelling and EEG representational similarity analyses. Our data suggest that the brain initially represents the number of flashes and beeps independently. Later, it computes their numbers by averaging the forced-fusion and segregation estimates weighted by the probabilities of common and independent cause models (i.e. model averaging). Crucially, prestimulus oscillatory alpha power and phase correlate with observers' prior beliefs about the world's causal structure that guide their arbitration between sensory integration and segregation.

---

<sup>1</sup>Department of Psychiatry and Psychotherapy, Calwerstr. 14, University of Tuebingen, 72076 Tuebingen, Germany. <sup>2</sup>LEAD Graduate School & Research Network, Walter-Simon-StraÙe 12, University of Tuebingen, 72074 Tuebingen, Germany. <sup>3</sup>Computational Neuroscience and Cognitive Robotics Centre, University of Birmingham, Edgbaston, Birmingham B15 2TT, UK. Correspondence and requests for materials should be addressed to T.R. (email: [Tim.Rohe@med.uni-tuebingen.de](mailto:Tim.Rohe@med.uni-tuebingen.de))

In everyday life, the brain is constantly confronted with a myriad of sensory signals. Imagine you are skipping stones on a lake. Each time the stone bounces off the water's surface, you see the impact and hear a brief splash. Should you integrate or segregate signals from vision and audition to estimate how many times the stone hits the water's surface? Hierarchical Bayesian Causal Inference provides a rational strategy to arbitrate between information integration and segregation by explicitly modelling the underlying potential causal structures, i.e. whether visual impacts and splash sounds are caused by common or independent events<sup>1,2</sup>. Under the assumption of a common cause, signals are integrated weighted by their relative precisions (or reliabilities, i.e. the reciprocal of variance) into one single 'forced-fusion' numeric estimate<sup>3,4</sup>. If, however, some splash sounds are caused by a stone hitting the water surface out of the observer's sight (e.g. another person throwing a stone), audition and vision will provide conflicting information. In this segregation case, the brain needs to estimate the number of events independently for vision and audition. Importantly, the brain cannot directly access the world's causal structure, but needs to infer it from the signals' noisy sensory representations based on correspondence cues such as temporal synchrony or spatial co-location. To account for observers' causal uncertainty, a final Bayesian Causal Inference estimate is computed by combining the 'forced-fusion' and the task-relevant unisensory segregation estimates weighted by the posterior probability of common or independent causes<sup>1</sup>. Perception thus relies crucially on inferring the hidden causal structure that generated the sensory signals.

Accumulating evidence suggests that human and animal observers arbitrate between sensory integration and segregation approximately in line with Bayesian Causal Inference<sup>1,5-7</sup>. For small intersensory conflicts, when it is likely that signals come from a common cause, observers integrate sensory signals approximately weighted by their relative precisions<sup>3,4</sup>, which leads to intersensory biases and perceptual illusions. Most prominently, in the sound-induced flash illusion, observers tend to perceive two flashes when a single flash appears together with two sounds<sup>8</sup>. For large intersensory conflicts such as temporal asynchrony, spatial disparity or numeric disparity, multisensory integration breaks down and crossmodal biases are attenuated<sup>5,9</sup>.

At the neural level, a recent fMRI study has demonstrated that the human brain performs multisensory Bayesian Causal Inference for spatial localization by encoding multiple spatial estimates across the cortical hierarchy<sup>10,11</sup>. While low-level sensory areas represented spatial estimates mainly under the assumption of separate causes, posterior parietal areas integrated sensory signals under the assumption of a common cause. Only at the top of the cortical hierarchy, in anterior parietal areas, the brain formed a Bayesian Causal Inference estimate that takes into account the observers' uncertainty about the signals' causal structure.

In summary, the brain should entertain two models of the sensory inputs, namely that the inputs are generated by common (i.e. forced-fusion model) or independent sources (i.e. segregation model). Using a decisional strategy called model averaging, hierarchical Bayesian Causal Inference accounts for the brain's uncertainty about the world's causal structure by averaging the forced-fusion and the task-relevant unisensory segregation estimates weighted by the posterior probabilities of their respective causal structures. Hence, hierarchical Bayesian Causal Inference goes beyond estimating an environmental property (e.g. numerosity, location) and involves inferring a causal model of the world (i.e. structure inference).

The hierarchical nature of Bayesian Causal Inference raises the intriguing question of how these computations evolve dynamically over time in the human brain. To assess this, we fitted the Bayesian Causal Inference model to observers' behavioral

responses and then investigated how observers' forced-fusion, the full-segregation auditory and visual estimates and the final Bayesian Causal Inference (i.e. model averaging) estimates are dynamically encoded in neural responses measured with EEG. While the brain is likely to update all estimates continuously in recurrent loops across the cortical hierarchy<sup>12-14</sup>, the neural representations of unisensory segregation and forced-fusion estimates may be more pronounced at earlier latencies than the final Bayesian Causal Inference estimate whose computation requires the posterior probabilities of the potential causal structures (i.e. common vs. independent causes). Moreover, neural activity (i.e. alpha-, beta- and gamma-oscillations<sup>15,16</sup>) prior to stimulus onset may modulate the causal prior (i.e. observers' prior belief about the world's causal structure) or precision of sensory representations (e.g. visual variance) in early visual cortices and thereby in turn influence the outcome of the Bayesian Causal Inference. We combined psychophysics, computational modelling and EEG representational similarity analyses to characterize the neural dynamics of Bayesian Causal Inference in perception of audiovisual stimulus sequences.

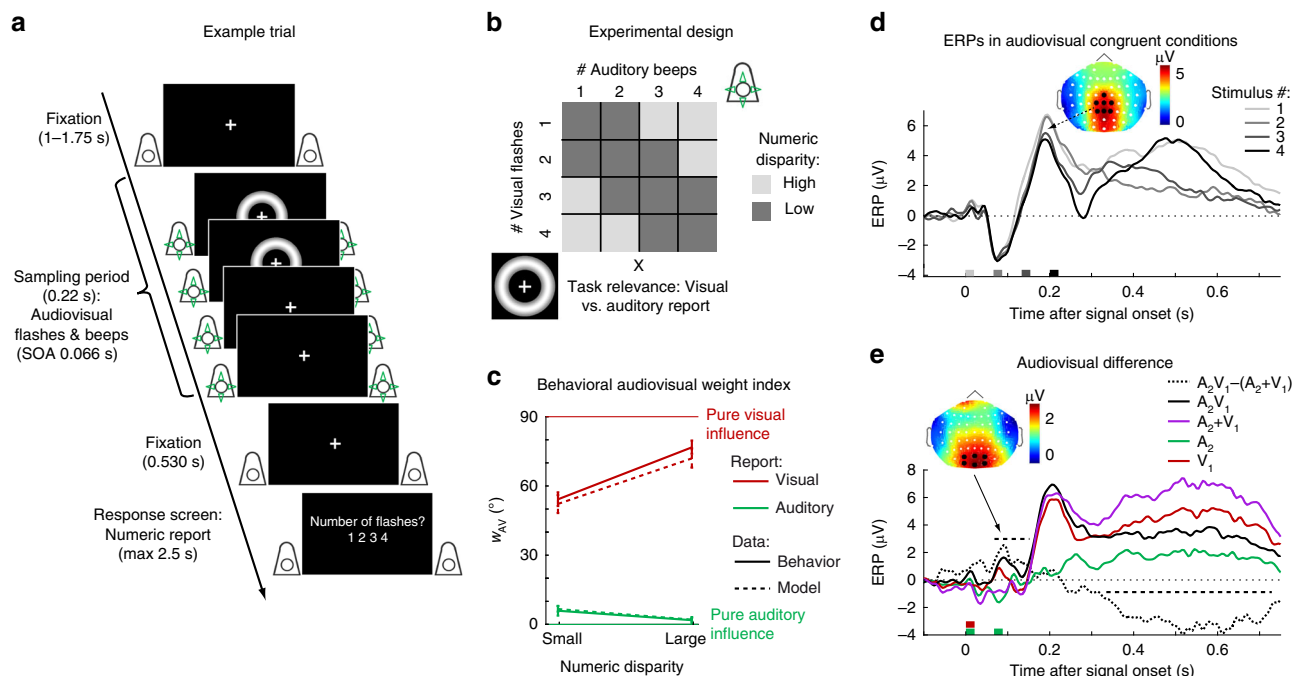
Our data suggest that the brain initially represents the number of audiovisual flashes and beeps independently. Later, it computes their numbers by averaging the forced-fusion and segregation estimates weighted by the posterior probabilities of a common and independent causes. Crucially, prestimulus oscillatory alpha and gamma power as well as alpha phase correlate with observers' causal priors. By resolving the computational operations of multisensory interactions in human neocortex in time, our study shows that the brain dynamically encodes and re-updates computational priors and multiple numeric estimates to perform hierarchical Bayesian Causal Inference.

## Results

**Experimental design and analysis.** During the EEG recording, we presented 23 human observers with sequences of auditory beeps and visual flashes in a four (1 to 4 flashes)  $\times$  four (1 to 4 beeps) factorial design (Fig. 1). Participants estimated and reported either the number of flashes or the number of beeps. We combined a general linear model (GLM) and a Bayesian modelling analysis to characterize the computations and neural mechanisms of how the brain combines information from vision and audition to estimate the number of auditory and visual stimuli.

### Behavior – Audiovisual weight index and Bayesian modelling.

Using a GLM (i.e. regression) approach, we computed a relative audiovisual weight index  $w_{AV}$  that quantifies the relative influence of the true number of beeps and flashes on participants' numeric reports. The audiovisual weight index  $w_{AV}$  was analyzed as a function of numeric disparity between beeps and flashes (i.e. small  $\leq 1$  vs. large  $\geq 2$ )  $\times$  task relevance (visual vs. auditory report). This audiovisual weight index ranges from pure visual ( $90^\circ$ ) to pure auditory ( $0^\circ$ ) influence. As shown in Figs. 1c and 2a, observers' reported number of beeps was mainly influenced by the true number of beeps and only slightly – but significantly – biased by the true number of flashes (circular mean  $w_{AV} = 3.871^\circ$ ,  $p < 0.001$ , one-sided randomization test on  $w_{AV} > 0^\circ$ ; i.e. a visual bias on auditory perception<sup>17,18</sup>). Conversely, the reported number of flashes was biased by the true number of beeps (circular mean  $w_{AV} = 65.483^\circ$ ,  $p < 0.001$ , one-sided randomization test on  $w_{AV} < 90^\circ$ ), which is consistent with the well-known 'sound-induced flash illusion'<sup>8,17,18</sup>. Yet, despite these significant biases operating from vision to audition and vice versa, observers did not fuse stimuli into one unified percept. Instead, the visual influence was stronger when the number of flashes was reported and the auditory influence was stronger when the number of



**Fig. 1** Example trial, experimental design and behavioral as well as EEG data. **a** Example trial of the flash-beep paradigm (e.g. two flashes and four beeps are shown) in which participants either report the number of flashes or beeps. **b** The experimental design factorially manipulated the number of beeps (i.e. one to four), number of flashes (i.e. one to four) and the task relevance of the sensory modality (report number of visual flashes vs. auditory beeps). To characterize the computational principles of the Bayesian Causal Inference (BCI) model, we reorganized these conditions into a two (task relevance: auditory vs. visual report) × two (numeric disparity: high vs. low) factorial design for the GLM-based analysis of the behavioral and EEG data (e.g. audiovisual weight index). **c** The behavioral audiovisual weight index  $w_{AV}$  (across-participants circular mean and bootstrapped 68% CI;  $n = 23$ ) is shown as a function of numeric disparity (small:  $\leq 1$  vs. large:  $\geq 2$ ) and task relevance (auditory vs. visual report).  $w_{AV}$  was computed for participants' numeric reports (solid) and the BCI model's predicted reports (dashed).  $w_{AV} = 90^\circ$  for purely visual and  $w_{AV} = 0^\circ$  for purely auditory influence. **d** Event-related potentials (ERPs; across-participants mean;  $n = 23$ ) elicited by one to four stimuli in audiovisual congruent conditions averaged across parietal electrodes and the ERP topography at the peak (averaged over conditions with one to four stimuli). The x axis shows the stimulus onsets. **e** Difference between ERPs elicited by two beeps and one flash and the sum of the corresponding unisensory ERPs (i.e.  $V_1A_2 - (A_2 + V_1)$ , black dotted), the unisensory auditory 'two beeps' ( $A_2$ , green), visual 'one flash' ( $V_1$ , red), audiovisual ( $A_2V_1$ , black solid) and the sum of the unisensory ( $A_2 + V_1$ , pink) averaged across occipital electrodes. A positive component was significant from 65–150 ms ( $p = 0.040$ , two-sided cluster-based corrected randomization  $t_{22}$  test; see horizontal dashed line) and a negative component was significant 335–730 ms after stimulus onset ( $p < 0.001$ ). The ERP topography at the peak of the positive component is shown. Source data are provided as a Source Data file

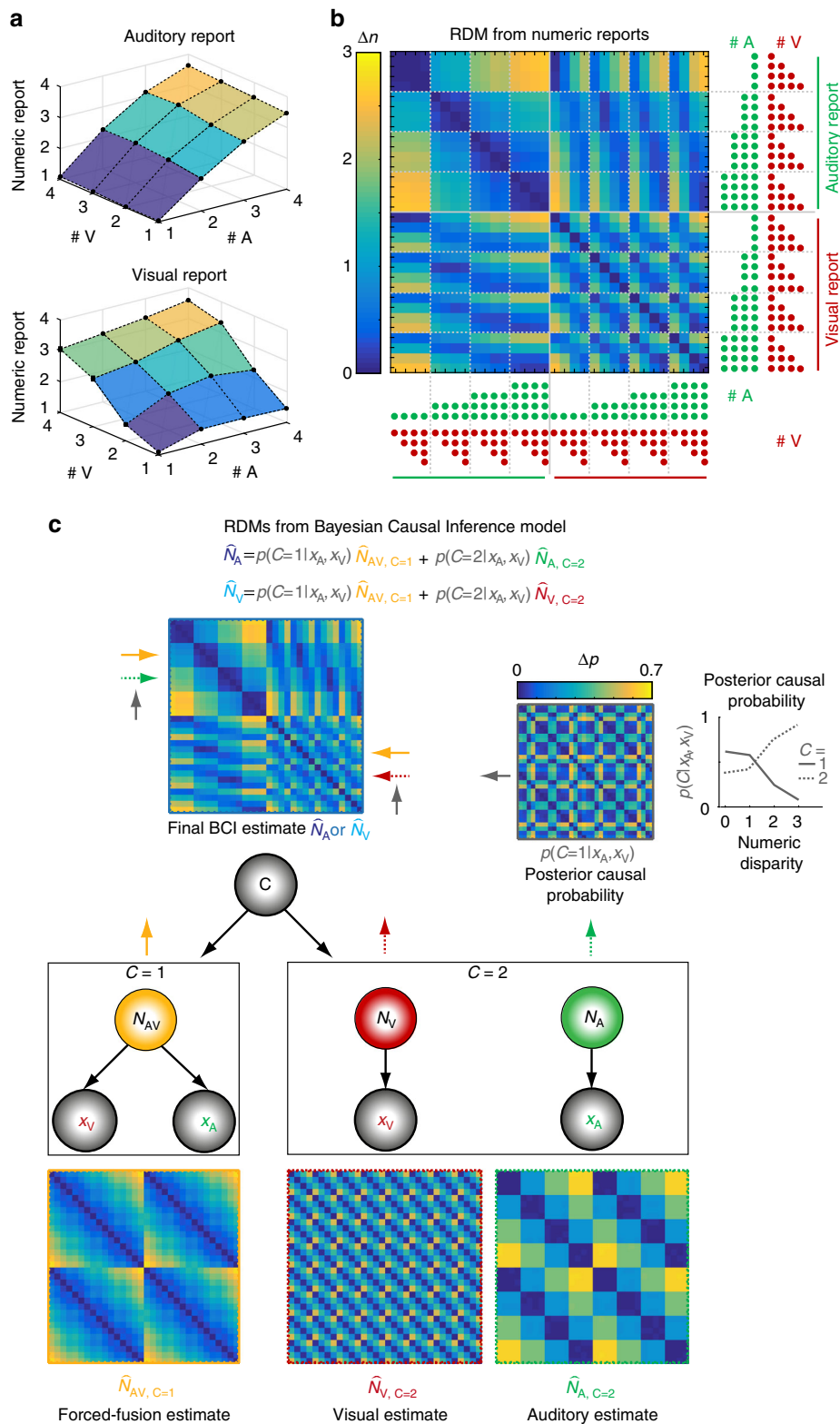
beeps was reported (effect of task on  $w_{AV}$ , LRTS = 85.620,  $p < 0.001$ , randomization test of a likelihood-ratio test statistic (LRTS); Table 1). As a result, observers reported different perceived numbers of flashes and beeps for audiovisual stimuli with a numeric disparity. Thus, participants flexibly adjusted the weights according to the task-relevant sensory modality. Crucially, this difference between auditory and visual report increased significantly for large relative to small numeric disparities. In other words, audiovisual integration broke down for large numeric disparities, when auditory and visual stimuli were more likely to be caused by independent sources (significant interaction between task relevance and numeric disparity, LRTS = 1.761,  $p < 0.001$ ; for analysis of response times, see Supplementary Notes and Supplementary Fig. 1).

Indeed, the model predictions in Fig. 1c show that this interaction between task relevance and numeric disparity is a key feature of Bayesian Causal Inference. As this behavioral profile can be accounted for neither by the classical forced-fusion model that assumes audiovisual stimuli are fused into one single estimate (i.e. common-source model) nor by the full-segregation model (i.e. independent-source model), the Bayesian Causal Inference model was the winning model for explaining the behavioral data based on formal Bayesian model comparison (Table 2). Further, the decisional function 'model averaging'

outperformed 'model selection' and 'probability matching' at the group level (see Supplementary Table 1, consistent with<sup>5</sup>, but see<sup>19</sup>). In the following, we will therefore focus selectively on Bayesian Causal Inference with model averaging.

**EEG – Conventional univariate ERP analysis.** Event-related potentials (ERPs) revealed the typical sequence of ERP components in response to audiovisual flashes and beeps (Fig. 1d), i.e. P1 (~ 50 ms), N1 (~ 100 ms), P2 (200 ms), N2 (280 ms) and P3 (>300 ms)<sup>20</sup>. In line with previous studies<sup>20,21</sup>, we observed early multisensory interactions in the classical 'sound-induced flash illusion' comparison (i.e.  $A_1V_1A_2$  vs.  $A_1A_2 + V_1$ ; Fig. 1e) over occipital electrodes starting at about ~ 70 ms (i.e. measured from the onset of the first flash-beep slot). Further, we observed a negative audiovisual-interaction component at 335–730 ms after stimulus onset. However, the current study did not focus on early multisensory interactions as evidenced in ERPs, but on the neural dynamics underlying Bayesian Causal Inference in perceptual decision-making.

**EEG – Multivariate decoding and audiovisual weight index.** To compute a neural audiovisual weight index  $w_{AV}$ , we applied multivariate pattern analysis to single-trial EEG activity patterns



(i.e. 64 electrodes) of 20 ms time intervals. We trained a support-vector regression model on EEG activity patterns independently at each time point of the audiovisual congruent conditions to establish a mapping between EEG activity patterns and number of audiovisual stimuli. We then generalized to the congruent and incongruent conditions (i.e. leave-one-run-out cross-validation). First, we ensured that we could decode the stimulus number for congruent trials significantly better than chance. Indeed, the decoder was able to discriminate between, for instance, three and

four flash-beeps nearly immediately after the presentation of the fourth flash-beep (Fig. 3a) and thus before the ERP traces, when averaged over parietal electrodes, started to diverge (Fig. 1d). Pooling over all four congruent conditions, we observed better than chance decoding accuracy from around 100 ms to 740 ms measured from the onset of the first flash-beep slot (Fig. 3b).

We applied the same analysis approach as for behavioral responses to the audiovisual decoded numeric estimates and computed the neural audiovisual weight index  $w_{AV}$  which

**Fig. 2** Representational dissimilarity matrices (RDMs) for numeric reports and estimates of the BCI model. **a** Participants' auditory and visual numeric reports (across-participants' mean;  $n = 23$ ) are plotted as a function of the true number of visual (# V) and auditory (# A) stimuli, separately for auditory (top) and visual report (bottom). The auditory reports are more strongly influenced by the true number of auditory stimuli, while the visual reports are more strongly influenced by the number of visual stimuli. Yet, crossmodal biases are also present. **b** RDM (across-participants' mean) showing the absolute differences in participants' numeric reports between all pairs of the 32 experimental conditions. The true number of beeps (green) and flashes (red) for each condition is indicated by the number of dots. **c** RDMs (across-participants' mean) computed from the numeric estimates and the estimate of the posterior probability of a common cause of the BCI model: The generative BCI model assumes that in case of a common cause ( $C = 1$ ), the "true" number of audiovisual stimuli  $N_{AV}$  is drawn from a common numeric prior distribution leading to noisy auditory ( $x_A$ ) and visual ( $x_V$ ) inputs. In case of independent causes ( $C = 2$ ), the "true" auditory ( $N_A$ ) and visual ( $N_V$ ) numbers of stimuli are drawn independently from the numeric prior distribution. To account for the causal uncertainty, the final BCI estimate of the auditory or visual stimulus number ( $\hat{N}_A$  or  $\hat{N}_V$ , depending on whether auditory or visual modality is reported) is computed by combining the forced-fusion estimate of the auditory and visual stimuli ( $\hat{N}_{AV,C=1}$ ) with the task-relevant unisensory visual ( $\hat{N}_{V,C=2}$ ) or auditory estimates ( $\hat{N}_{A,C=2}$ ), each weighted by the posterior probability of a common ( $C = 1$ ) or independent ( $C = 2$ ) causes, respectively ( $p(C|x_A, x_V)$ ). Arrows indicate the influence of component estimates on the RDM of the final BCI estimate. The probability of independent causes (dashed) increases with larger numeric disparity and vice versa for the probability of a common cause (n.b. they sum to unity). Source data are provided as a Source Data file

**Table 1** Effects of numeric disparity (D) and task relevance (T) on the behavioral and the neural audiovisual weight index  $w_{AV}$  computed from numeric estimates decoded from EEG activity patterns (i.e. significant clusters)

Behavioral $w_{AV}$			Neural $w_{AV}$		
Effect	LRTS	$p$	Cluster #	Time (ms)	$p$
T	85.620	<0.001	1	420–540	<0.001
			2	620–660	0.007
D	1.624	<0.001	1	400–480	<0.001
T X D	1.761	<0.001	1	560	0.039
			2	680–720	0.001

Note:  $p$  values are based on randomization tests using a circular log likelihood-ratio statistic (LRTS). Effects for the neural  $w_{AV}$  are cluster-based corrected for the multiple time points. Only significant (i.e.  $p < 0.05$ ) clusters are reported.  $n = 23$

quantified the relative auditory and visual influences on the decoded number of flashes and beeps across poststimulus time (i.e. from 100 ms to 740 ms). We assessed how the neural audiovisual weight index was affected by numeric disparity between beeps and flashes (i.e. small  $\leq 1$  vs. large  $\geq 2$ ) and task relevance (visual vs. auditory report) in a  $2 \times 2$  repeated-measures analysis (Fig. 3c and Table 1). We observed that the auditory influence was stronger for small relative to large numeric disparities from 400 to 480 ms poststimulus (i.e. effect of numeric disparity: 200–280 ms after the final flash-beep slot). Only when the numeric disparity was small and hence the two stimuli were likely to come from a common cause, auditory stimuli impacted the neural estimation of the number of flashes, which dominated the EEG activity patterns. Shortly later, i.e. 420–540 ms poststimulus, the influence of the auditory and visual stimuli on the decoded numeric estimate also depended on the sensory modality that needed to be reported (effect of task relevance; for additional effects see Table 1). The number of flashes influenced the decoded numeric estimates more strongly for visual report, whereas the number of beeps influenced the decoded numeric estimates for auditory report. Crucially, at 560 ms and from 680 to 720 ms poststimulus, we observed a significant interaction between task relevance and numeric disparity, which is the key profile of Bayesian Causal Inference. As predicted by Bayesian Causal Inference (cf. Fig. 1c), the audiovisual weight indices for auditory and visual report were similar (i.e. integration) for small numeric disparity, but diverged (i.e. segregation) for large numeric disparities when it is unlikely that the flash and the beep sequences were generated by a common cause.

**EEG – Representational geometry of the numeric estimates and activity patterns.** Using representational similarity analysis<sup>22</sup>, we

compared the representational geometry of the full-segregation auditory or visual, forced-fusion and the final Bayesian Causal Inference (BCI) estimates with the representational geometry of observers' numeric reports (Fig. 2) and EEG activity patterns across poststimulus time (Fig. 4). First, we estimated the representational dissimilarity matrices (RDMs) by computing the pairwise absolute distance between the BCI model's four numeric estimates, i.e. (i) the forced-fusion, the full-segregation (ii) auditory and (iii) visual and (iv) the final BCI estimates as well as the posterior causal probability across all 32 conditions. As shown in Fig. 2c, the RDM for the forced-fusion estimate ( $\hat{N}_{AV,C=1}$ ) was a weighted average of the RDMs of the full-segregation auditory ( $\hat{N}_{A,C=2}$ ) and visual ( $\hat{N}_{V,C=2}$ ) estimates. Further, because the auditory modality provides more precise temporal information (cf. Table 2) which is crucial for estimating the number of stimuli, the forced-fusion RDM is more similar to the auditory than the visual RDM. Finally, the RDM for the BCI estimate (i.e.  $\hat{N}_A$  or  $\hat{N}_V$ , depending on the sensory modality that needs to be reported) combines the forced-fusion estimate ( $\hat{N}_{AV,C=1}$ ) with the task-relevant unisensory visual ( $\hat{N}_{V,C=2}$ ) or auditory ( $\hat{N}_{A,C=2}$ ) estimates (depending on report), weighted by the posterior probability of a common or separate causes, respectively (i.e.  $p(C = 1|x_A, x_V)$  or  $p(C = 2|x_A, x_V)$ ). The probability of a common cause increased with smaller numeric disparity such that the influence of the forced-fusion estimate was greater for small numeric disparities. Figure 2b illustrates that the RDM computed from observers' behavioral numeric reports was nearly identical to the BCI RDM. This match was confirmed statistically by a high correlation between the BCI RDM (i.e.  $\hat{N}_A$  or  $\hat{N}_V$ ) and participants' behavioral RDM ( $r = 0.878 \pm 0.059$ , mean  $\pm$  SEM,  $t_{22} = 59.806$ ,  $p < 0.001$ , Cohen's  $d = 12.471$ ; one-sample  $t$ -test on Fisher's  $z$ -transformed rank correlations against zero). Of course, this match between behavioral and BCI RDM was expected because the BCI RDM was computed from the predictions of the BCI model that well fit participants' numeric reports (i.e. circular dependency; cf. Table 2).

Next, we characterized the neural dynamics of Bayesian Causal Inference by comparing the representational geometry obtained from EEG activity patterns across time with the representational geometries of (i) the forced-fusion, the full-segregation (ii) auditory and (iii) visual and (iv) the final BCI estimates. As shown in Fig. 4a, the RDMs obtained from EEG activity patterns significantly correlated with the unisensory auditory RDM ( $\hat{N}_{A,C=2}$ ; significant cluster 60–740 ms,  $p < 0.001$ , one-sided cluster-based corrected randomization  $t_{22}$  test), the unisensory visual RDM ( $\hat{N}_{V,C=2}$ ; cluster 100–720 ms,  $p < 0.001$ ), the forced-fusion RDM ( $\hat{N}_{AV,C=1}$ ; cluster 80–740 ms,  $p < 0.001$ ) and the BCI RDM ( $\hat{N}_A$  or  $\hat{N}_V$ ; significant cluster 80–740 ms,  $p < 0.001$ ). In

**Table 2 Results of the Bayesian model comparison of the Bayesian Causal Inference, the forced-fusion and the full-segregation model**

	$p_{\text{common}}$	$\mu_p$	$\sigma_p$	$\sigma_A$	$\sigma_V$	$R^2$	relBIC	pEP	% win
Causal Inference (model averaging)	0.42 ± 0.05	2.26 ± 0.20	2.34 ± 0.29	0.53 ± 0.03	1.11 ± 0.23	0.874 ± 0.012	0	1	95.7
Forced fusion	-	2.10 ± 0.22	4.38 ± 0.60	1.17 ± 0.04	1.45 ± 0.04	0.617 ± 0.016	8362.42	0	4.3
Full segregation	-	2.15 ± 0.20	2.11 ± 0.32	0.55 ± 0.03	1.01 ± 0.11	0.846 ± 0.015	920.70	0	0

Note:  $p_{\text{common}}$ , causal prior;  $\mu_p$ , mean of the numeric prior;  $\sigma_p$ , standard deviation of the numeric prior;  $\sigma_A$ , standard deviation of the auditory likelihood;  $\sigma_V$ , standard deviation of the visual likelihood;  $R^2$ , coefficient of determination; relBIC, Bayesian information criterion at the group level, i.e. participant-specific BICs summed over all participants ( $\text{BIC} = \text{LL} - 0.5 m \ln(n)$ , LL = log likelihood,  $m$  = number of parameters,  $n$  = number of data points) of a model relative to the Bayesian Causal Inference ("model averaging") model (n.b. a smaller relBIC indicates that a model provides a better explanation of our data); pEP, protected exceedance probability, i.e. the probability that a given model is more likely than any other model, beyond differences due to chance). % win, percentage of participants in which a model won the within-participant model comparison based on BIC

short, the RDMs of EEG activity patterns correlated with multiple numeric estimates simultaneously. For the posterior probability of a common cause ( $p(C = 1 | x_A, x_V)$ ), the correlation was weaker but significant in a later cluster (260–640 ms after stimulus onset,  $p < 0.001$ ). The strong and sustained correlations of EEG RDMs and the RDMs of the four numeric estimates from the BCI model were expected because the four numeric estimates were highly correlated with one another. Hence, to account for these inherent correlations between these numeric estimates, we next computed the exceedance probability (i.e. the probability that the correlation with one numeric RDM was greater than that of any other RDMs) to determine which of the four numeric estimates was most strongly represented in the EEG activity patterns at a given time point (Fig. 4b). The exceedance probabilities showed that the EEG activity patterns predominantly encoded the unisensory visual estimate from 120 ms up to around 500 ms (i.e. 300 ms after the final flash-beep slot). This visual over auditory influence on EEG activity patterns at the scalp may be surprising, because the auditory sense exerts a stronger influence on observers' reported numeric estimates (Fig. 1c) and provides more precise temporal information when estimated from observers' numeric reports (i.e.  $\sigma_A$  is smaller than  $\sigma_V$  in Table 2). Potentially, the visual neural sources elicit EEG activity patterns in sensor space that are more informative about the number of events (see methods section for caveats and critical discussion of the decoding analysis). Indeed, additional multivariate decoding analyses of the unisensory auditory and visual conditions showed that the number of visual stimuli could be more accurately decoded from visual EEG activity patterns than the number of auditory stimuli from auditory EEG activity patterns (Supplementary Fig. 2). Potentially, this advantage for visual decoding under unisensory stimulation may further increase in an audiovisual context when the visual signal is task-relevant because of additional attentional amplification.

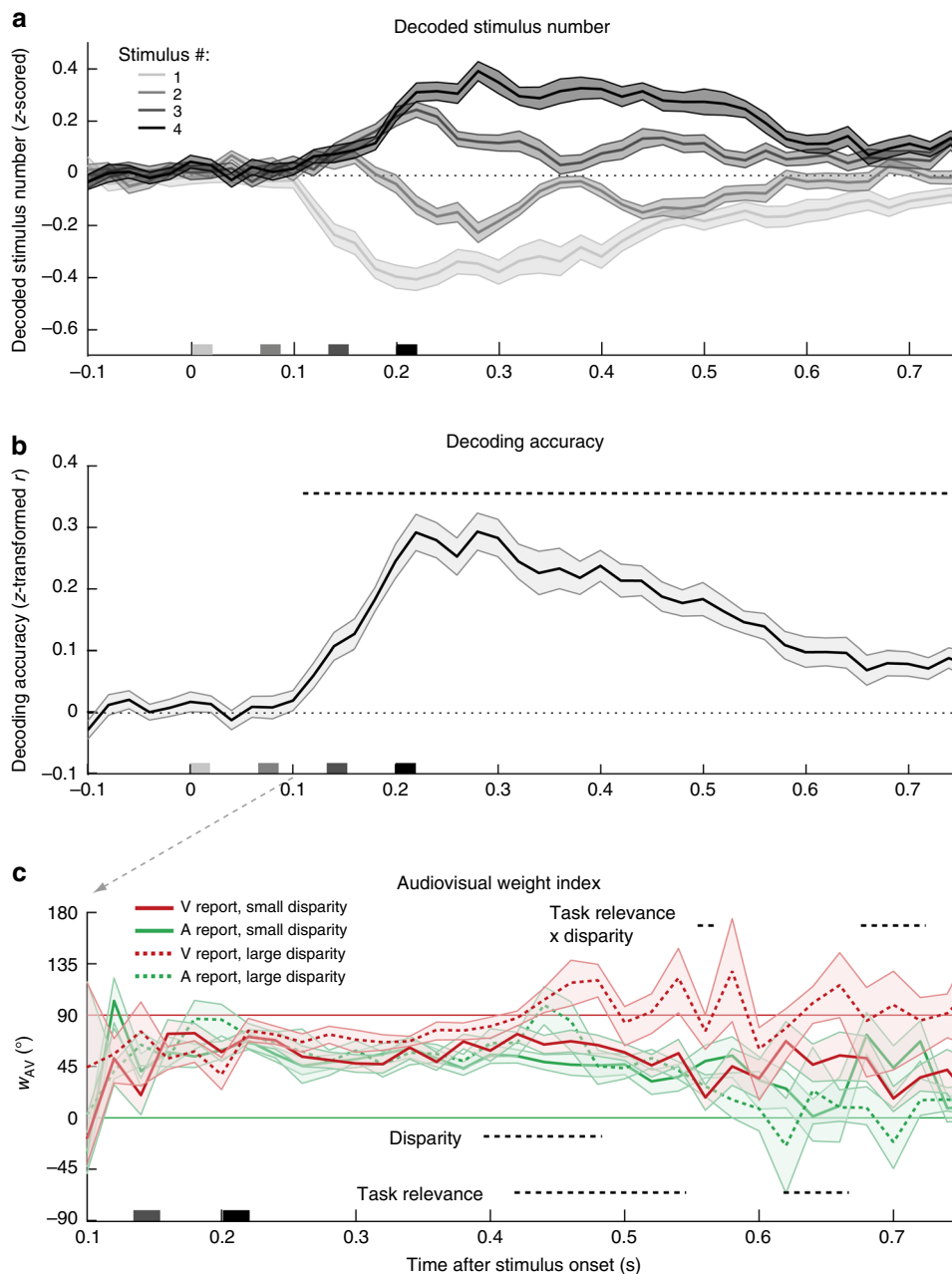
Crucially, from 450 ms poststimulus (i.e. 250 ms after the presentation of the final flash-beep; Fig. 4b), the EEG representational geometries progressively reflected the BCI estimate. Collectively, the model-based representational similarity analysis suggests that Bayesian Causal Inference evolves by dynamic encoding of multiple sensory estimates. First, the EEG activity is dominated by the numeric unisensory and forced-fusion estimates (i.e.  $\hat{N}_{V,C=2}$ ,  $\hat{N}_{A,C=2}$ , and  $\hat{N}_{AV,C=1}$ ) and later by the BCI estimate (i.e.  $\hat{N}_A$  or  $\hat{N}_V$ ) that takes into account the observers' uncertainty about the world's causal structure.

### EEG – Effect of prestimulus oscillations on the causal prior.

Previous research demonstrated that observers perceived a sound-induced flash illusion more often for low prestimulus alpha power and high beta as well as gamma power over occipital (i.e. visual) cortices<sup>15,16</sup>. Within the framework of Bayesian Causal Inference, the occurrence of a sound-induced flash illusion

may increase when visual precision is reduced or the causal prior (i.e. the probability of a common vs. independent causes, also known as binding tendency<sup>6</sup>) is enhanced. We therefore investigated whether prestimulus oscillatory power (over occipital electrodes) alters participants' multisensory perception as parameterized by the causal prior ( $p_{\text{common}}$ ) or the precision of visual representations (i.e. the reciprocal of  $\sigma_V$ ). For this, we sorted the trials into 10 deciles according to oscillatory power for each time and frequency point and re-fitted the causal prior or the precision of visual representations in the BCI model separately for each bin. Next, we computed the correlation of the causal prior or the visual precision with oscillatory power over deciles. This analysis showed that the causal prior correlated positively with gamma power ( $p = 0.036$ , two-sided cluster-based corrected randomization  $t_{22}$  test, starting at  $-220$  ms prestimulus to stimulus onset) and negatively with alpha power ( $p = 0.042$ , from  $-320$  ms to  $-100$  ms prestimulus, Fig. 5a, b). Figure 5c shows the weight index  $w_{AV}$  computed from participants' behavior for each decile and the corresponding model predictions. Both human and model behavior showed more audiovisual influences (i.e.  $w_{AV}$  indices shifted towards 0.5) for high gamma power and low alpha power. Crucially, these audiovisual biases operated from vision to audition and vice versa (i.e. a bidirectional bias which cannot be modelled by changes in visual precision). Hence, prestimulus gamma and alpha oscillations tune how the brain arbitrates between sensory integration and segregation. High gamma and low alpha power prior to stimulus presentation increase the brain's tendency to bind stimuli across the senses. For completeness, we did not observe any significant effect of oscillatory power on the visual precision (Supplementary Fig. 3A).

Given the prominent role of alpha oscillations in temporal binding<sup>23</sup> in visual and multisensory perception, we next investigated whether the prestimulus alpha phase influenced the causal prior or visual precision. Using a similar sort-and-binning approach as for prestimulus power, we computed a circular-linear correlation between alpha phase and causal prior (or visual precision) over deciles as a function of prestimulus time. While there was again no significant effect of alpha phase on visual precision (Supplementary Fig. 3B), we observed a significant cluster from  $-160$  ms to  $-80$  ms prestimulus ( $p = 0.015$ , one-sided cluster-based corrected randomization  $t_{22}$  test), where alpha phase correlated significantly with participants' causal prior (Fig. 6a): trials with a specific alpha phase led to a higher causal prior than trials with an opposing alpha phase. Importantly, the relation between alpha phase and causal prior progressed consistently over time at alpha frequency (i.e. 10 Hz; Fig. 6c). In support of this, a sinusoidal model in which the phase of an alpha oscillation modulated the causal prior outperformed a model that did not include a sinusoidal modulation from  $-280$  ms to  $-80$  ms prestimulus in 20 out of 23 participants (individual  $F_{2,107}$  tests,  $p < 0.05$ , Fig. 6b; see Supplementary Fig. 4 for individual data from four representative participants).

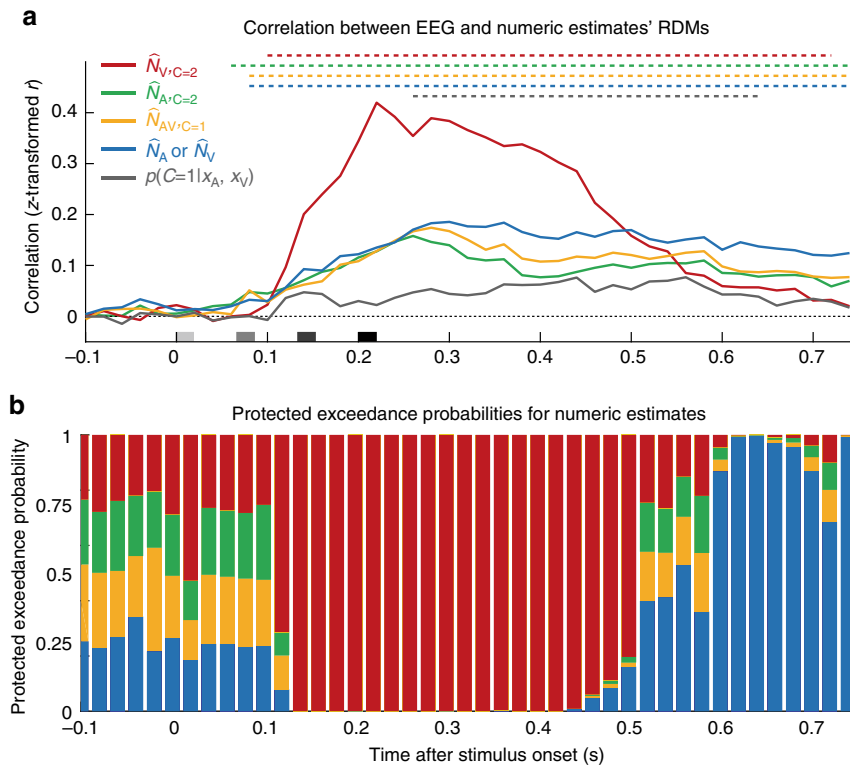


**Fig. 3** Decoded stimulus number, decoding accuracy, and relative audiovisual weight index. **a** Decoded stimulus number in audiovisual congruent conditions (across-participants mean  $\pm$  SEM;  $n = 23$ ). Note that the stimulus numbers {1, 2, 3, 4} as labels were transformed to  $\{-1, -0.33, +0.33, +1\}$  before decoding such that the decoder predicts a stimulus value of 0 in case of no information on stimulus number in EEG activity patterns and decoded stimulus number was z scored in each run. Stimulus onsets are shown on the x axis. **b** Decoding accuracy (Fisher’s z-transformed correlation; across-participants mean  $\pm$  SEM) of the decoders as a function of time. Decoding accuracy was computed as Pearson correlation coefficient between true and decoded stimulus number in audiovisual congruent conditions. Decoding accuracy was significant in a cluster from 120–740 ms ( $p < 0.001$ , one-sided cluster-based corrected randomization  $t_{22}$  test; see horizontal dashed line). **c** Neural audiovisual weight index  $w_{AV}$  (across-participants circular mean and bootstrapped 68% CI) as a function of numeric disparity (small vs. large), task relevance (visual (V) vs. auditory (A) report) and time.  $w_{AV} = 90^{\circ}$  for purely visual and  $w_{AV} = 0^{\circ}$  for purely auditory influence. Horizontal dashed lines indicate significant clusters for effects of numeric disparity, task relevance and their interaction ( $p < 0.05$ ; cluster-based corrected randomization test based on an LRTS statistic, cf. Table 1). Source data are provided as a Source Data file

However, the relation of alpha phase and causal prior was not consistent across participants ( $z_{22} = 2.486$ ,  $p = 0.082$ , Raleigh test, Fig. 6b). These differences between participants are expected and may arise from differences in cortical folding and hence orientations of the underlying neural sources. To account for these differences across participants, we therefore aligned the alpha phase individually for each participant, such that the phase

at the peak group effect at  $-160$  ms prestimulus was consistent across participants (cf. Supplementary Fig. 5 for data without phase-alignment). Figure 6c, d shows that the alpha phase modulates the causal prior across nearly three cycles which is consistent across participants. Collectively, these results demonstrate that the power and phase of prestimulus alpha oscillations influence observers’ causal prior, which formally quantifies their





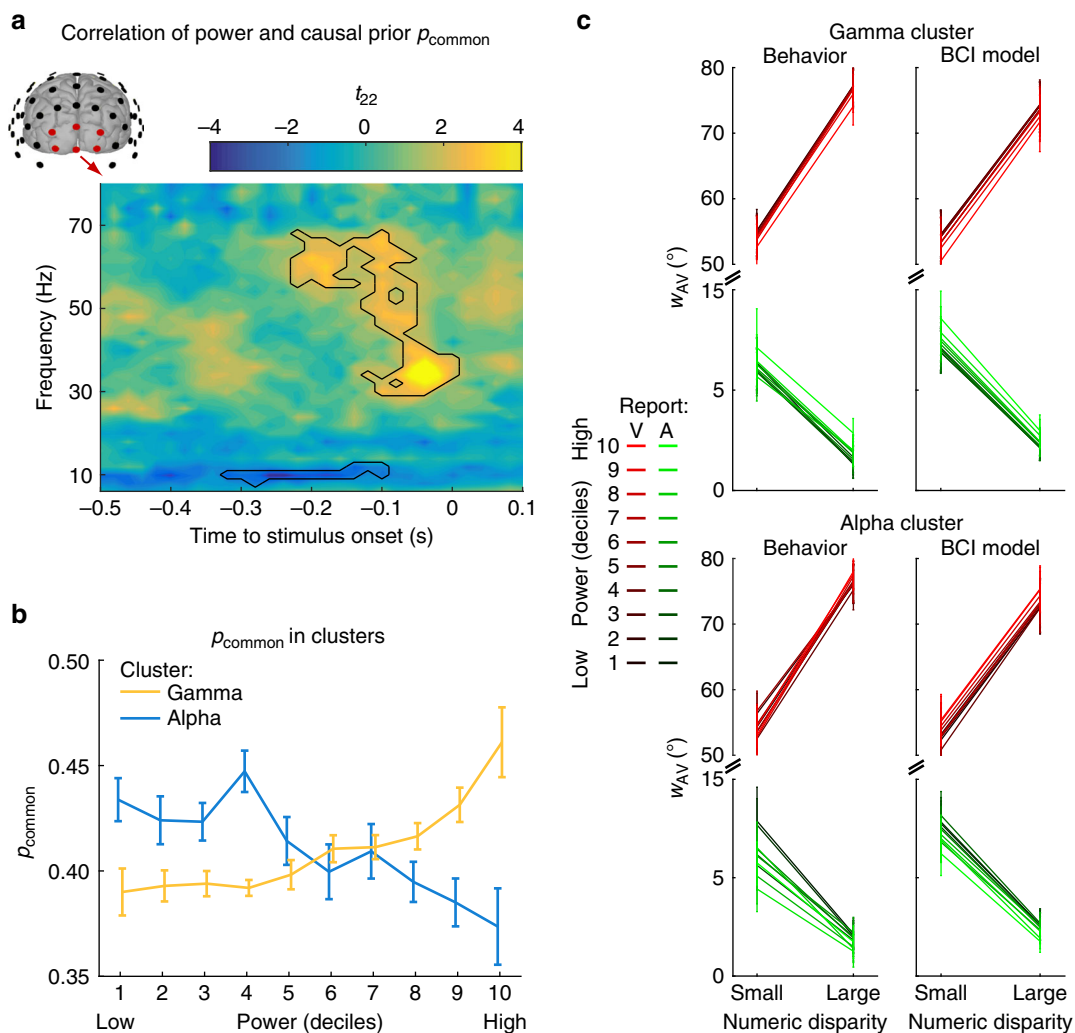
**Fig. 4** Correlation of the representational dissimilarity matrices (RDMs) of EEG activity patterns with the BCI model's estimates and their exceedance probability. **a** Spearman's rank correlation coefficients (across-participants mean of Fisher's z-transformed  $r$ ;  $n = 23$ ) as a function of time. The correlation coefficients were computed between the RDMs of EEG activity patterns of all 64 electrodes and the RDMs of the BCI model's internal estimates: i. the unisensory visual ( $\hat{N}_{V,C=2}$ , red), ii. the unisensory auditory ( $\hat{N}_{A,C=2}$ , green) estimates under the assumption of independent causes ( $C = 2$ ), iii. the forced-fusion estimate ( $\hat{N}_{AV,C=1}$ , yellow) under the assumption of a common cause ( $C = 1$ ) and iv. the final BCI estimate ( $\hat{N}_A$  or  $\hat{N}_V$ , depending on the task-relevant sensory modality, blue) that averages the task-relevant unisensory and the forced-fusion estimate by the posterior probability estimate of each causal structure ( $p(C = 1|x_A, x_V)$ ). Color-coded horizontal dashed lines indicate clusters of significant correlation coefficients ( $p < 0.05$ ; one-sided cluster-based corrected randomization  $t_{22}$  test). Stimulus onsets are shown along the x axis. **b** To identify which of the four numeric BCI estimates is most likely represented in the EEG activity patterns, we computed the protected exceedance probability (i.e. the probability that a given estimate is more likely encoded in the EEG activity patterns than any other estimate, beyond differences due to chance) for each of the four numeric BCI estimates as a function of time. The length of an estimate's bar indicates the estimate's protected exceedance probability (n.b.: the y axis indicates protected exceedance probabilities cumulated over the BCI estimates). Source data are provided as a Source Data file

apriori tendency to bind signals from audition and vision into a coherent percept.

**EEG – The relation of prior stimulus history, prestimulus alpha power and the causal prior.** Previous research has shown that prior stimulus history influences observers' binding tendency<sup>24–26</sup>. For instance, prior congruent audiovisual speech stimuli increased observers' tendency to bind incongruent audiovisual signals into illusory McGurk percepts<sup>24</sup>. Hence, we investigated whether the numeric disparity of previous flash-beep stimuli (going back in history to five trials prior to stimulus onset) influenced observers' causal prior on the current trial. Indeed, as shown in Fig. 7a, a 2 (numeric disparity: small vs. large)  $\times$  5 (stimulus order: 1, 2, 3, 4, 5 trials back) repeated-measures ANOVA revealed a significant main effect of numeric disparity ( $F_{1,21} = 6.260$ ,  $p = 0.021$ , partial  $\eta^2 = 0.230$ ) and a significant interaction between numeric disparity and stimulus order ( $F_{2,6,54.9} = 4.060$ ,  $p = 0.015$ , partial  $\eta^2 = 0.162$ ; Greenhouse-Geisser corrected  $df$ ). Post-hoc tests for the effect of numeric disparity separately for specific stimulus order showed that the effect of numeric disparity was most pronounced for the first- and second-order previous stimulus (first order:  $t_{22} = 3.731$ ,  $p = 0.001$ , Cohen's  $d = 0.778$ ; marginally significant second order:

$t_{22} = 2.042$ ,  $p = 0.053$ , Cohen's  $d = 0.426$ ; two-sided paired  $t$ -tests) and tapered off with stimulus order.

Our results so far suggest that previous stimulus history (i.e. numeric disparity of previous trials) and pre-stimulus alpha power predict observers' tendency to bind audiovisual signals (Fig. 7b). This raises the intriguing question whether alpha power mediates the effect of previous stimulus history. For instance, given the well-established role of pre-stimulus alpha oscillations in visual perception<sup>27–30</sup> and attention<sup>31</sup>, one may argue that alpha power is adjusted according to observers' causal expectations based on prior stimulus history. Contrary to this conjecture, the numeric disparity of previous stimuli did not significantly predict alpha power (Fig. 7c; all clusters  $p > 0.05$ ; Bayes factors provided substantial evidence in favor of a null effect, Supplementary Fig. 8). However, we observed a marginally significant interaction between numeric disparity of the previous trial and alpha power on observers' causal prior in two clusters from  $-340$  to  $-240$  ms, ( $p = 0.069$ ) and from  $-220$  to  $-120$  ms ( $p = 0.096$ ; two-sided cluster-based corrected randomization  $t_{22}$  test, Fig. 7d, top panel). The correlation between alpha power and the observers' causal prior was prominent when prior numeric disparity was small (cluster from  $-480$  to  $-80$  ms,  $p = 0.006$ ), but not significant when previous numeric disparity was large (i.e. all clusters  $p > 0.05$ ). In summary, alpha power did not mediate, but



**Fig. 5** Effect of prestimulus oscillatory power on the BCI model’s causal prior ( $p_{\text{common}}$ ) over occipital electrodes. **a** Time-frequency  $t$ -value map ( $n = 23$ ) for the correlation between  $p_{\text{common}}$  and the oscillatory power deciles averaged across occipital electrodes. Significant clusters ( $p < 0.05$ ; two-sided cluster-based corrected randomization  $t_{22}$  test) are demarcated by a solid line. **b**  $p_{\text{common}}$  (across-participants’ mean  $\pm$  within-participants’ SEM) as a function of power deciles averaged across the significant clusters in the gamma and alpha band shown in **a**. **c** The weighting index  $w_{AV}$  (across-participants’ mean and bootstrapped 68% CI) computed from participants’ behavior (left column) and the BCI model’s predictions (right column) for each of the 10 power deciles shown in **b**.  $w_{AV}$  is shown as a function of numeric disparity (small:  $\leq 1$  vs. large:  $\geq 2$ ) and task relevance (A: auditory vs. V: visual report), separately for the significant cluster in the gamma (top) and alpha band (bottom).  $w_{AV} = 90^\circ$  for purely visual and  $w_{AV} = 0^\circ$  for purely auditory influence. Source data are provided as a Source Data file

to some extent (i.e. only marginally significant) moderated the effect of stimulus history on observers’ causal prior, i.e. their tendency to bind audiovisual signals (Fig. 7b).

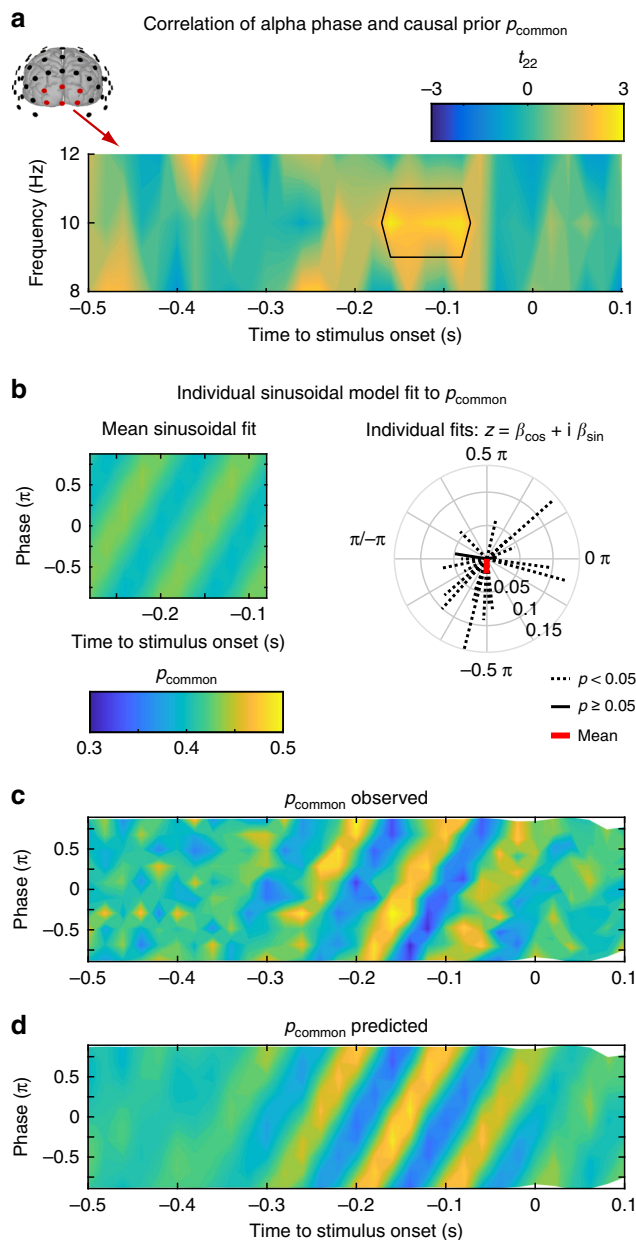
**Discussion**

To form a coherent percept of the world, the human brain needs to integrate signals arising from a common cause, but segregate signals from independent causes. Perception thus relies crucially on inferring the world’s causal structure<sup>1,2</sup>. To characterize the neural dynamics of how the brain solves this binding problem, we presented participants with sequences of beeps and flashes that varied in their numeric disparity.

Behaviorally, the number of beeps biased observers’ perceived number of flashes – a phenomenon coined sound-induced flash illusion<sup>8</sup>. Conversely, the number of flashes biased observers’ perceived number of beeps<sup>17,18</sup>, albeit only to a small degree. This asymmetry of crossmodal biases operating from vision to audition and vice versa can be attributed to the smaller precision of

vision for temporal estimation, which is consistent with forced-fusion models of reliability-weighted integration<sup>3,4</sup> (and Bayesian Causal Inference models, cf. Table 2). Crucially, as predicted by Bayesian Causal Inference, participants did not fully fuse auditory and visual stimuli into one unified percept, but they reported different numeric estimates for the flash and beep components of numerically disparate flash-beep stimuli. Moreover, audiovisual integration and crossmodal biases decreased for large numeric disparities, when the flash and beep sequences were unlikely to arise from a common cause<sup>5,9</sup>. Thus, observers flexibly arbitrated between audiovisual integration and segregation depending on the probabilities of the underlying causal structures as predicted by Bayesian Causal Inference (see Fig. 2c).

At the neural level, our univariate and multivariate EEG analyses revealed that the computations and neural processes of multisensory interactions and Bayesian Causal Inference dynamically evolve poststimulus. Initially, the univariate ERP analyses revealed an early audiovisual interaction effect starting at about 70 ms poststimulus that is related to the visual P1 component and

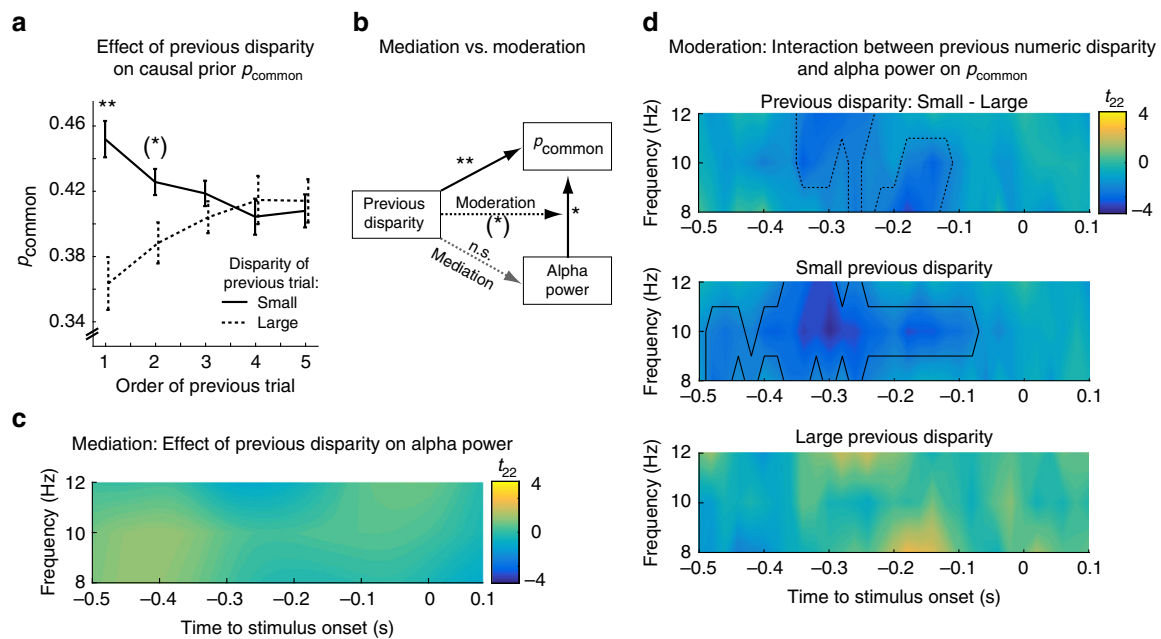


**Fig. 6** Effect of prestimulus alpha phase on the BCI model's causal prior ( $p_{\text{common}}$ ) in occipital electrodes. **a** Time-frequency  $t_{22}$  map ( $n = 23$ ) for the circular-linear correlation between  $p_{\text{common}}$  and the phase deciles of alpha oscillations for 8, 10 and 12 Hz and averaged across occipital electrodes. Significant clusters ( $p < 0.05$ ; one-sided cluster-based corrected randomization  $t_{22}$  test) are demarcated by a solid line. **b** Left: Across participants' mean predicted  $p_{\text{common}}$  (colour coded) as a function of time (x-axis) and 10 Hz alpha phase bin (y-axis, alpha phase indicated as fraction of  $\pi$ ). The predicted  $p_{\text{common}}$  is based on the constrained sinusoidal model which predicts  $p_{\text{common}}$  for a particular decile and time by a single sine and cosine of the phase at 10 Hz averaged across trials in this particular decile and time bin (see Equation (9)). Hence, this constrained sinusoidal model assumes that the modulation of  $p_{\text{common}}$  by alpha phase evolves at 10 Hz over time. Right: Individual model fits are significant ( $p < 0.05$ ; individual  $F_{2,107}$  tests, dashed lines) in 20 of 23 participants, but the sinusoidal model's phase angles (i.e.  $\Phi_{\text{participant}} = \text{angle}(z) = \text{angle}(\beta_{\text{cos}} + i\beta_{\text{sin}})$ ) do not deviate significantly from a circular uniform distribution ( $z_{22} = 2.486$ ,  $p = 0.082$ , Raleigh test) across participants. **c, d** Across-participants' mean observed (**c**) and predicted (**d**)  $p_{\text{common}}$  is shown coded in color as a function of time (x-axis) and 10 Hz alpha phase bin (y-axis, alpha phase indicated as fraction of  $\pi$ ). The phases of the observed and predicted  $p_{\text{common}}$  were aligned across participants (at the peak of the non-aligned effect with alpha phase  $= -0.29\pi$  at  $-160$  ms; see methods section and Supplementary Fig. 5B) before averaging across participants. The predicted  $p_{\text{common}}$  (**d**) is based on the sinusoidal models that predicted  $p_{\text{common}}$  by alpha phase across the deciles independently for each time point (i.e. time-specific alpha phase models) and participant (i.e. Equation (8)). Source data are provided as a Source Data file

has previously been shown to be susceptible to attention<sup>32</sup>. Potentially, these early non-specific audiovisual interactions enhance the excitability in visual cortices and the salience of the visual input and may thereby facilitate the emergence of the sound-induced flash illusion<sup>20,21</sup>. Our multivariate EEG analyses revealed that the audiovisual weight index  $w_{\text{AV}}$  was influenced by both auditory and visual inputs until 400 ms poststimulus, though with a slightly stronger influence of the visual input. This visual dominance in the multivariate pattern decoding may at least partly explain the surprisingly strong correlation between EEG activity pattern and the unisensory visual segregation estimate in the RDM analysis reaching a plateau from 200 ms to 400 ms poststimulus (see methods section for further discussion about methodological caveats). In addition, the posterior probability over causal structures is decodable from EEG activity patterns shortly after the final flash-beep slot. Likewise, the weight index  $w_{\text{AV}}$  indicated an early numeric disparity effect at about 400 ms poststimulus (i.e. 200 ms after the final stimulus slot; Fig. 3). Thus, causal inference starts immediately after stimulus

presentation based on numeric disparity and influences early audiovisual interactions and biases as quantified by the neural weight index. However, only relatively late, starting at about 200–300 ms and peaking at 400 ms after the onset of the final stimulus slot, does the brain compute numeric estimates consistent with Bayesian Causal Inference by averaging the forced-fusion estimate with the task-relevant unisensory estimate weighted by the posterior probabilities of common and independent causal structures (i.e. model averaging). The exceedance probability of the hierarchical Bayesian Causal Inference estimate steadily rises until its peak, where it outperforms all other numeric estimates in accounting for the representational geometries obtained from EEG activity patterns (i.e. exceedance probability  $\approx 1$ ). Likewise, the relative audiovisual weight index  $w_{\text{AV}}$  revealed a task-relevance by numeric-disparity interaction at similar latencies as the characteristic qualitative profile for Bayesian Causal Inference.

This dynamic evolution of neural representations dovetails nicely with a hierarchical organization of Bayesian Causal Inference that has recently been shown in fMRI research<sup>10,11</sup>: Low-level sensory areas represented sensory estimates mainly under the assumption of separate causes, whereas posterior parietal areas integrated the signals weighted by their sensory precision under the assumption of a common cause. Only at the top of the cortical hierarchy, in anterior parietal areas, did the brain form a final Bayesian Causal Inference estimate that takes into account the observers' uncertainty about the signals' causal structure. Collectively, fMRI and EEG research jointly suggest that computations involving unisensory estimates rely on lower-level regions at earlier latencies, while Bayesian Causal Inference estimates that take into account the world's causal structure arise later in higher-level cortical regions. Previous fMRI research implicated prefrontal cortices in the computations of the causal structure<sup>24,33</sup>, which may in turn inform the integration processes in parietal and temporal cortices<sup>34</sup>.



**Fig. 7** The effect of prior numeric disparity on the BCI model's causal prior ( $p_{\text{common}}$ ) and prestimulus alpha power. **a** Effect of previous numeric disparity on causal prior  $p_{\text{common}}$  (across-participants' mean  $\pm$  within-participants' SEM,  $n = 23$ ) as a function of the numeric disparity (small:  $\leq 1$  vs. large:  $\geq 2$ ) of the previous trial of order 1–5. The effect of previous numeric disparity on causal prior decays with increasing trial order. Asterisks denote statistical significance in two-sided one-sample  $t_{22}$  tests (\*\*:  $p < 0.01$ , \*:  $p < 0.05$ , (\*):  $p < 0.1$ , n.s.: not significant). **b** Mediation and moderation: Previous numeric disparity and pre-stimulus alpha power significantly predict  $p_{\text{common}}$ . However, previous numeric disparity does not predict pre-stimulus alpha power. Hence, pre-stimulus alpha power does not mediate the effect of numeric disparity on the causal prior. Instead, we observed a marginally significant interaction between previous numeric disparity and alpha power suggesting that previous numeric disparity moderates the effect of pre-stimulus alpha power on  $p_{\text{common}}$ . **c** Mediation: Effect of previous numeric disparity on alpha power: Time-frequency  $t$ -value map ( $n = 23$ , averaged over occipital electrodes) reveals no significant difference in prestimulus alpha power between small vs. large previous numeric disparity (i.e. trial order 1). All clusters  $p > 0.05$  (two-sided cluster-based corrected randomization  $t_{22}$  test). **d** Moderation: Interaction effect between previous numeric disparity and alpha power on causal prior: Time-frequency  $t$ -value maps ( $n = 23$ ) for the correlation between  $p_{\text{common}}$  and the alpha power averaged across occipital electrodes over deciles for trials with large (lower panel) or small (middle panel) numeric disparity of the previous trial and the difference in correlations between small and large disparity of the previous trial (top panel). We observed only a marginally significant interaction between previous disparity and alpha power on  $p_{\text{common}}$  ( $p < 0.1$ ; two-sided cluster-based corrected randomization  $t_{22}$  test demarcated by dashed line in top panel). Prestimulus alpha power correlated significantly with observers' causal prior only if the previous trial was of a small numeric disparity ( $p < 0.05$ ; demarcated by a solid line, middle panel). Source data are provided as a Source Data file

A recent neural network model with a feedforward architecture by Cuppini et al.<sup>35,36</sup> suggests that this explicit causal inference relies on a higher convergence layer, while the audiovisual biases in numeric estimates may be mediated via direct connectivity between auditory and visual layers and emerge from spatio-temporal receptive fields in auditory and visual processing. In contrast to such a feed-forward architecture, we generally observed a mixture of multiple representations that were concurrently expressed in EEG activity patterns, even though different numeric estimates dominated neural processing at different poststimulus latencies. Therefore, we suggest that Bayesian Causal Inference is iteratively computed via multiple feed-back loops across the cortical hierarchy whereby numeric estimates as well as causal inferences are recurrently updated as the brain accumulates knowledge about the causal structure and sources in the environment<sup>12,13</sup>.

In Bayesian inference, prior knowledge and expectations are crucial to guide the perceptual interpretation of the noisy sensory inputs<sup>37</sup>. Multisensory perception in particular relies on a so-called causal prior that quantifies observers' prior beliefs about the world's causal structure<sup>1,2</sup>. A 'high' causal prior (i.e. the belief that signals come from a common cause) influences multisensory perception by increasing observers' tendency to bind audiovisual signals irrespective of the signals' instantaneous intersensory

congruency<sup>24</sup>. In the current study, we investigated whether the neural activity before stimulus onset is related to observers' causal prior. Indeed, low prestimulus alpha power and high gamma power were associated with a high causal prior, i.e. they increased participants' tendency to integrate audiovisual stimuli. Accumulating research has shown effects of prestimulus alpha power on perceptual decisions such as detection threshold, decisional biases or perceptual awareness<sup>27,28,38</sup>. Further, low alpha power was also shown to increase the occurrence of the sound-induced flash illusion<sup>16</sup> (though see Keil et al.<sup>15</sup> for an effect in beta power). In our study, low prestimulus alpha power predicted a larger causal prior leading to stronger bidirectional interactions between audition and vision and audiovisual biases (see Fig. 5c, audiovisual weight index  $w_{AV}$ ). These enhanced audiovisual interactions might be explained by a tonic increase in cortical excitability for states of low alpha oscillatory power and associated high gamma power (though see Yuval-Greenberg et al.<sup>39</sup> for a cautionary note). Moreover, if peaks and troughs of alpha oscillatory activity are modulated asymmetrically<sup>40</sup>, low alpha power may also induce larger alpha troughs, thereby extending the temporal windows where gamma bursts and audiovisual interactions can occur<sup>41</sup>. Indeed, our results show that observers' causal prior depends not only on the tonic level of alpha power, but also on its phase. Prestimulus alpha phase may thus influence audiovisual

binding by defining the optimal time window in which neural processing can interact across auditory, visual and association areas, thereby modulating the temporal parsing of audiovisual signals into one unified percept<sup>23,42</sup>.

Next, we investigated whether the fluctuations in alpha power may enable observers to adapt dynamically to the statistical structure of the sensory inputs. Previous research has shown that prior exposure to congruent signals increases observers' tendency to integrate sensory signals, while exposure to incongruent signals enhances their tendency to process signals independently<sup>(24,25, but see<sup>26</sup>)</sup>. In the current study, we also observed that previous low numeric disparity trials predicted a greater causal prior or tendency to bind audiovisual signals into a coherent percept. Surprisingly, however, the numeric disparity of previous audiovisual stimuli did not significantly influence alpha power. It only modulated the effect of alpha power on the causal prior (i.e. a marginally significant interaction between alpha power and prior numeric disparity). More specifically, alpha power correlated with observers' causal prior mainly when previous stimuli were of low rather than large numeric disparity.

Collectively, our results show that observers' causal prior dynamically adapts to the statistical structure of the world (i.e. previous audiovisual numeric disparity), but that these adaptation processes are not mediated by fluctuations in alpha power. Instead, spontaneous (i.e. as yet unexplained by stimulus history) fluctuations in prestimulus gamma and alpha power as well as alpha phase correlated with observers' causal prior. Alpha power, phase and frequency (i.e. speed)<sup>43–45</sup> together with gamma power may thus dynamically set the functional neural system into states that facilitate or inhibit interactions across brain regions<sup>46</sup> and temporal parsing of audiovisual signals into common percepts<sup>23,41</sup>.

In conclusion, to our knowledge this is the first study that resolves the neural computations of hierarchical Bayesian Causal Inference in time (see also<sup>47,48</sup>). We show that prestimulus oscillatory alpha power and phase correlates with the brain's causal prior as a binding tendency that guides how the brain dynamically arbitrates between sensory integration and segregation (see<sup>49,50</sup> for related studies showing that top-down predictions may be furnished via alpha/beta oscillations). Initially, about 70 ms after stimulus presentation, we observed non-specific audiovisual interactions, which may increase the bottom-up salience of sensory signals. Our multivariate analyses suggested that unisensory numeric estimates initially dominated the EEG activity pattern. Only later, from about 200–400 ms after the final stimulus slot, EEG signals encoded the Bayesian Causal Inference estimates that combine the forced-fusion and task-relevant segregation estimates weighted by the probabilities of common and independent cause models (i.e. model averaging). Thus, consistent with the notion of predictive coding, the brain may accumulate evidence concurrently about i. auditory (or visual) numeric estimates and ii. the underlying causal structure (i.e. whether auditory and visual signals come from common or independent sources) over several hundred milliseconds via recurrent message passing across the cortical hierarchy to compute Bayesian Causal Inference estimates<sup>13,51</sup>. By resolving the computational operations of multisensory interactions in human neocortex in time, our study reveals the hierarchical nature of multisensory perception. It shows that the brain dynamically encodes and re-updates computational priors and multiple numeric estimates to perform hierarchical Bayesian Causal Inference.

## Methods

**Participants.** After giving written informed consent, 24 healthy volunteers participated in the EEG study based on previous calculations of statistical power. One participant did not attend the interview session and was excluded. Thus, data from

23 participants were analyzed (10 female; mean age 36.0 years, range 25–61 years). Participants were screened for current or former psychiatric disorders (as verified by the screening questions of the structured clinical interview for DSM IV axis I disorders, SCID-I, German version), cardio-vascular disorders, diabetes and neurological disorders. One participant reported an asymptomatic arteriovenous malformation. Because behavioral and EEG was inconspicuous, the participant was included. All participants had normal or corrected-to-normal vision and audition. The study was approved by the human research review committee of the Medical Faculty of the University of Tuebingen and at the University Hospital Tuebingen (approval number 728/2014BO2).

**Stimuli.** The flash-beep paradigm was an adaptation of previous “sound-induced flash illusion” paradigms<sup>7,8</sup>. The visual flash was a circle presented in the center of the screen on a black background (i.e. 100% contrast; Fig. 1a) briefly for one frame (i.e. 16.7 ms, as defined by the monitor refresh rate of 60 Hz). The maximum grayscale value (i.e. white) of the circle was at radius 4.5° with smoothed inner and outer borders by defining the grayscale values of circles of smaller and larger radius by a Gaussian of 0.9° STD visual angle. The auditory beep was a pure tone (2000 Hz; ~70 dB SPL) of 27 ms duration including a 10 ms linear on/off ramp. Multiple visual flashes and auditory beeps were presented sequentially at a fixed SOA of 66.6 ms (see below).

**Experimental design.** In the flash-beep paradigm, participants were presented with a sequence of i. one, two, three or four flashes and ii. one, two, three or four beeps (Fig. 1a). On each trial, the number of flashes and beeps were independently sampled from one to four leading to four levels of absolute numeric audiovisual disparities (i.e. zero = congruent to three = maximal level of disparity; Fig. 1b). Each flash and/or beep was presented sequentially in fixed temporal slots that started at 0, 66.7, 133, 200 ms. The temporal slots were filled up sequentially. For instance, if the number of beeps was three, they were presented at 0, 66.6, 133 and 200 ms, while the fourth slot was left empty. Hence, if the same number of flashes and beeps were presented on a particular trial, beeps and flashes were presented in synchrony. On numerically disparate trials, the ‘surplus’ beeps (or flashes) were added in the subsequent fixed time slots (e.g. in case of 2 flashes and 3 beeps: we present 2 flash-beeps at 0 and 66.6 ms in synchrony and a single beep at 133 ms).

Across experimental runs, we instructed participants to selectively report either the number of flashes or beeps and to ignore the stimuli in the task-irrelevant modality. Hence, the  $4 \times 4 \times 2$  factorial design manipulated (i) the number of visual flashes (i.e. one, two, three or four), (ii) the number of auditory beeps (i.e. one, two, three or four) and (iii) the task relevance (auditory- vs. visual-selective report) yielding 32 conditions in total (Fig. 1b). For analyses, we reorganized trials based on their absolute numeric disparity ( $|\#A - \#V| \leq 1$ : small numeric disparity;  $|\#A - \#V| \geq 2$ : large numeric disparity). Thus, we analyzed the data in a 2 (task relevance: visual vs. auditory report)  $\times$  2 (numeric disparity) factorial design. Please note that for model estimation, a dual-task design combining auditory and visual report on the same trials may have been preferable. However, the dual-task demands would render the interpretation of the neural processes ambiguous, so that in our experiment participants reported either their auditory or visual percept on each trial.

The duration of a flash-beep sequence was determined by the number of sequentially presented flash and/or beep stimuli (see above for the definition of temporal slots). Irrespective of the number of flashes and/or beeps, a response screen was presented 750 ms after the onset of the first flash and beep for a maximum duration of 2.5 s instructing participants to report their perceived number of flashes (or beeps) as accurately as possible by pushing one of four buttons. The order of buttons was counterbalanced across runs to decorrelate motor responses from numeric reports. On half of the runs, the buttons from left to right corresponded to one to four stimuli; on the other half, they corresponded to four to one. After a participant's response, the next trial started after an inter-trial interval of 1–1.75 s.

In every experimental run, each of the 16 conditions was presented 10 times. Participants completed 4 runs of auditory- and 4 runs of visual-selective report in a counterbalanced fashion (except for one participant performing 5 runs of auditory and 3 of visual report). Further, each participant completed two unisensory runs with visual or auditory stimuli only (i.e. 4 unisensory conditions presented 40 times per run) from which we computed the difference wave (see below). Before the actual experiment, participants completed 56 practice trials.

**Experimental setup.** Psychtoolbox 3.09<sup>52</sup> ([www.psychtoolbox.org](http://www.psychtoolbox.org)) running under MATLAB R2016a (MathWorks) presented audiovisual stimuli and sent trigger pulses to the EEG recording system. Auditory stimuli were presented at ~70 dB SPL via two loudspeakers (Logitech Z130) positioned on each side of the monitor. Visual stimuli were presented on an LCD screen with a 60 Hz refresh rate (EIZO FlexScan S2202W). Button presses were recorded using a standard keyboard. Participants were seated in front of the monitor and loudspeakers at a distance of 85 cm in an electrically shielded, sound-attenuated room.

**Overview of GLM and Bayesian modelling analysis for behavioral data.** To characterize how human observers arbitrate between sensory integration and

segregation, we developed a general linear model (GLM)-based and a Bayesian modelling analysis approach.

The GLM-based analysis computed a relative weight index  $w_{AV}$  which quantified the relative influence of the auditory and the visual numeric stimuli on observers' auditory and visual behavioral numeric reports. This GLM-based analysis allowed us to reveal audiovisual weight profiles in our 2 (numeric disparity)  $\times$  2 (task relevance) factorial design that are qualitatively in line with the principles of Bayesian Causal Inference (Fig. 1c).

The Bayesian modelling analysis fitted the full-segregation, the forced-fusion and the Bayesian Causal Inference (BCI) model to the behavioral numeric reports with different decision functions. We then used Bayesian model comparison to determine the model that is the best explanation for observers' behavioral data (Table 2 and Supplementary Table 1).

**Behavior - GLM-based analysis for reported number of stimuli.** We quantified the influence of the true number of auditory and visual stimuli on the reported (behavioral) auditory or visual numeric estimates using a linear regression model<sup>11</sup>. In this regression model, the reported number of stimuli was predicted by the true number of auditory and visual stimuli separately in the four conditions in the 2 (numeric disparity)  $\times$  2 (task relevance) factorial design. The auditory ( $\beta_A$ ) and visual ( $\beta_V$ ) parameter estimates quantified the influence of the experimentally defined auditory and visual stimuli on the perceived number of stimuli for a particular condition. To obtain a relative audiovisual weight index  $w_{AV}$ , we computed the four-quadrant inverse tangents of the auditory ( $\beta_A$ ) and visual ( $\beta_V$ ) parameters estimates for each of the four conditions (i.e.  $w_{AV} = \text{atan}(\beta_V, \beta_A)$ ). An audiovisual weight index  $w_{AV} = 90^\circ$  indicates purely visual and  $w_{AV} = 0^\circ$  purely auditory influence on the reported/decoded number of stimuli.

We performed the statistics on the behavioral audiovisual weight indices using a two (auditory vs. visual report)  $\times$  two (large vs. small numeric disparity) factorial design based on a likelihood-ratio test statistic (LRTS) for circular measures<sup>53</sup>. Similar to an analysis of variance for linear data, LRTS computes the difference in log-likelihood functions for the full model that allows differences in the mean locations of circular measures between conditions (i.e. main and interaction effects) and the reduced null model that does not model any mean differences between conditions. To refrain from making any parametric assumptions, we evaluated the effects of task relevance, numeric disparity and their interaction in the factorial design using randomization tests (5000 randomizations)<sup>54</sup>. To account for the within-participant repeated-measures design at the second random-effects level, randomizations were performed within each participant. For the main effects of numeric disparity and task relevance,  $w_{AV}$  values were randomized within the levels of the non-tested factor<sup>55</sup>. For tests of the numeric-disparity  $\times$  task-relevance interactions, we randomized the simple main effects (i.e. (A1B1, A2B2) and (A1B2, A2B1)) which are exchangeable under the null-hypothesis of no interaction<sup>56</sup>. To test deviations of  $w_{AV}$  from specific test angles (e.g.  $w_{AV} < 90^\circ$ ), we used one-sided one-sample randomization tests in which we flipped the sign of the individual circular distance of  $w_{AV}$  from the test angle<sup>57</sup> and used the mean circular distance as test statistic.

Unless otherwise stated, results are reported at  $p < 0.05$ . For plotting circular means of  $w_{AV}$  (Figs. 1c and 5c for behavioral  $w_{AV}$ , Fig. 3c for neural  $w_{AV}$ , see multivariate EEG analysis), we computed the means' bootstrapped confidence intervals (1000 bootstraps).

**Behavior - Full-segregation, forced-fusion and Bayesian Causal Inference models.** Next, we fitted the full-segregation, the forced-fusion and the Bayesian Causal Inference model with model averaging, model selection and probability matching as decision functions to observers' behavioral reports. Using Bayesian model comparison, we then assessed which of these models is the best explanation for observers' reported numeric estimates.

In the following, we will first describe the Bayesian Causal Inference model from which we will then derive the forced-fusion and full-segregation model as special cases. Details can be found in Kording et al. (2007)<sup>1</sup>.

Briefly, the generative model (Fig. 2c) assumes that common ( $C = 1$ ) or independent ( $C = 2$ ) causes are determined by sampling from a binomial distribution with the causal prior  $p(C = 1) = p_{\text{common}}$  (i.e. a priori binding tendency<sup>6</sup>). For a common cause, the "true" number of audiovisual stimuli  $N_{AV}$  is drawn from the numeric prior distribution  $N(\mu_p, \sigma_p)$ . For two independent causes, the "true" auditory ( $N_A$ ) and visual ( $N_V$ ) numbers of stimuli are drawn independently from this numeric prior distribution. We introduced sensory noise by drawing  $x_A$  and  $x_V$  independently from normal distributions centered on the true auditory (respectively visual) number of stimuli with parameters  $\sigma_A$  (respectively  $\sigma_V$ ). Thus, the generative model included the following free parameters: the causal prior  $p_{\text{common}}$ , the numeric prior's mean  $\mu_p$  and standard deviation  $\sigma_p$ , the auditory standard deviation  $\sigma_A$ , and the visual standard deviation  $\sigma_V$ . The posterior probability of the underlying causal structure can be inferred by combining the causal prior with the sensory evidence according to Bayes rule:

$$p(C = 1 | x_A, x_V) = \frac{p(x_A, x_V | C = 1) p_{\text{common}}}{p(x_A, x_V)} \quad (1)$$

The causal prior quantifies observers' belief or tendency to assume a common cause and integrate stimuli prior to stimulus presentation. After stimulus presentation, the disparity between the number of beeps and flashes informs the

observers' causal inference via the likelihood term (cf. Fig. 2c). In the case of a common cause ( $C = 1$ ), the optimal audiovisual numeric estimate ( $\hat{N}_{AV,C=1}$ ) is obtained under the assumption of a squared loss function, by combining the auditory and visual numeric estimates as well as the numeric prior (with a Gaussian distribution of  $N(\mu_p, \sigma_p)$ ) weighted by their relative reliabilities:

$$\hat{N}_{AV,C=1} = \frac{\frac{x_A}{\sigma_A} + \frac{x_V}{\sigma_V} + \frac{\mu_p}{\sigma_p}}{\frac{1}{\sigma_A} + \frac{1}{\sigma_V} + \frac{1}{\sigma_p}} \quad (2)$$

In the case of independent causes ( $C = 2$ ), the optimal numeric estimates of the unisensory auditory ( $\hat{N}_{A,C=2}$ ) and visual ( $\hat{N}_{V,C=2}$ ) stimuli are independent:

$$\hat{N}_{A,C=2} = \frac{\frac{x_A}{\sigma_A} + \frac{\mu_p}{\sigma_p}}{\frac{1}{\sigma_A} + \frac{1}{\sigma_p}}, \hat{N}_{V,C=2} = \frac{\frac{x_V}{\sigma_V} + \frac{\mu_p}{\sigma_p}}{\frac{1}{\sigma_V} + \frac{1}{\sigma_p}} \quad (3)$$

To provide a final estimate of the number of auditory or visual stimuli, the observer is thought to combine the estimates under the two causal structures using various decision functions such as "model averaging," "model selection," or "probability matching"<sup>19</sup>. According to "model averaging", the brain combines the audiovisual and the unisensory numeric estimates weighted in proportion to the posterior probabilities of their underlying causal structures:

$$\hat{N}_A = p(C = 1 | x_A, x_V) \hat{N}_{AV,C=1} + (1 - p(C = 1 | x_A, x_V)) \hat{N}_{A,C=2} \quad (4)$$

$$\hat{N}_V = p(C = 1 | x_A, x_V) \hat{N}_{AV,C=1} + (1 - p(C = 1 | x_A, x_V)) \hat{N}_{V,C=2} \quad (5)$$

According to the 'model selection' strategy, the brain reports the numeric estimate selectively from the more likely causal structure (Equation (6) only for  $\hat{N}_A$ ):

$$\hat{N}_A = \begin{cases} \hat{N}_{AV,C=1} & \text{if } p(C = 1 | x_A, x_V) > 0.5 \\ \hat{N}_{A,C=2} & \text{if } p(C = 1 | x_A, x_V) \leq 0.5 \end{cases} \quad (6)$$

According to 'probability matching', the brain reports the numeric estimate of one causal structure stochastically selected in proportion to its posterior probability (Equation (7) only for  $\hat{N}_A$ ):

$$\hat{N}_A = \begin{cases} \hat{N}_{AV,C=1} & \text{if } p(C = 1 | x_A, x_V) > \alpha, \alpha \sim U(0, 1) \\ \hat{N}_{A,C=2} & \text{if } p(C = 1 | x_A, x_V) \leq \alpha, \alpha \sim U(0, 1) \end{cases} \quad (7)$$

Thus, Bayesian Causal Inference formally requires three numeric estimates ( $\hat{N}_{AV,C=1}$ ,  $\hat{N}_{A,C=2}$ ,  $\hat{N}_{V,C=2}$ ) which are combined into a final estimate ( $\hat{N}_A$  or  $\hat{N}_V$ , depending on which sensory modality is task-relevant) according to one of the three decision functions.

We evaluated whether and how participants integrate auditory and visual stimuli based on their auditory and visual numeric reports by comparing (i) the full-segregation model that estimates stimulus number independently for vision and audition (i.e. formally, the BCI model with a fixed  $p_{\text{common}} = 0$ ), (ii) the forced-fusion model that integrates auditory and visual stimuli in a mandatory fashion (i.e. formally, the BCI model with a fixed  $p_{\text{common}} = 1$ ) and (iii) the BCI model (i.e. model averaging; Table 2). Because the decisional strategy of 'model averaging' outperformed the other decision functions (Equations (4)-(7)) based on Bayesian model comparison at the group level (Supplementary Table 1), the main report and analysis of the neural data focus on model averaging.

To arbitrate between the full-segregation, forced-fusion and BCI models, we fitted each model to participants' numeric reports (Table 2) based on the predicted distributions of the auditory (i.e. the marginal distributions:  $p(\hat{N}_A | N_A, N_V)$ ) and visual (i.e.  $p(\hat{N}_V | N_A, N_V)$ ) numeric estimates that were obtained by marginalizing over the internal variables  $x_A$  and  $x_V$  that are not accessible to the experimenter (for further details of the fitting procedure, see Kording et al.<sup>1</sup>). These distributions were generated by simulating  $x_A$  and  $x_V$  5000 times (i.e. continuous variables sampled from Gaussian distributions) for each of the 32 conditions and inferring  $\hat{N}_A$  and  $\hat{N}_V$  from Equations (1)-(5). To link the continuous distributions  $p(\hat{N}_A | N_A, N_V)$  and  $p(\hat{N}_V | N_A, N_V)$  to participants' categorical auditory or visual numeric reports (i.e. from {1,2,3,4}), we assumed that participants selected the button that is closest to  $\hat{N}_A$  or  $\hat{N}_V$  and binned  $\hat{N}_A$  and  $\hat{N}_V$  accordingly into a four-bin histogram. From these predicted multinomial distributions (i.e. one for each of the 32 conditions; auditory and visual numeric reports were linked to  $\hat{N}_A$  and  $\hat{N}_V$ , respectively), we computed the log likelihood of participants' numeric reports and summed the log likelihoods across conditions. To obtain maximum likelihood estimates for the five parameters of the models ( $p_{\text{common}}$ ,  $\mu_p$ ,  $\sigma_p$ ,  $\sigma_A$ ,  $\sigma_V$ ; formally, the forced-fusion and full-segregation models assume  $p_{\text{common}} = 1$  or  $= 0$ , respectively), we used a non-linear simplex optimization algorithm as implemented in Matlab's `fminsearch` function (Matlab R2015b). This optimization algorithm was initialized with 10 different parameter settings that were defined based on a prior grid-search.

We report the results (across-participants' mean and standard error) of the parameter setting with the highest log likelihood across these initializations (Table 2 and Supplementary Table 1). This fitting procedure was applied individually to each participant's data set for the Bayesian Causal Inference (with three different decision functions), the forced-fusion and the full-segregation models. The model fit was assessed by Nagelkerke's coefficient of determination<sup>58</sup>

using a null model of random guesses of stimulus number 1–4 with equal probability 0.25. To identify the optimal model for explaining participants' data, we compared the candidate models using the Bayesian Information Criterion (BIC) as an approximation to the model evidence<sup>59</sup>. The BIC depends on both model complexity and model fit. We performed Bayesian model comparison<sup>60</sup> at the random effects group level as implemented in SPM12<sup>61</sup> to obtain the protected exceedance probability (the probability that a given model is more likely than any other model, beyond differences due to chance<sup>60</sup>) for the candidate models.

To generate predictions for the audiovisual weight index based on the Bayesian Causal Inference model (with model averaging), we simulated new  $x_A$  and  $x_V$  for 10000 trials for each of the 32 conditions using the fitted BCI model parameters of each participant. For each simulated trial, we computed the BCI model's i. unisensory visual ( $\hat{N}_{V,C=2}$ ), ii. unisensory auditory ( $\hat{N}_{A,C=2}$ ) estimates, iii. forced-fusion ( $\hat{N}_{AV,C=1}$ ), iv. final BCI audiovisual numeric estimate ( $\hat{N}_A$  or  $\hat{N}_V$  depending on whether the auditory or visual modality was task-relevant) and v. posterior probability estimate of each causal structure ( $p(C = 1|x_A, x_V)$ ). Next, we used the mode of the resulting (kernel-density estimated) distributions for each condition and participant to compute the model predictions for the audiovisual weight index  $w_{AV}$  (Figs. 1c, 5c) and the RDMs (see multivariate EEG analysis, Fig. 2c).

**EEG - Data acquisition and preprocessing.** EEG signals were recorded from 64 active electrodes positioned in an extended 10–20 montage using electrode caps (actiCap, Brain Products, Gilching, Germany) and two 32 channel DC amplifiers (BrainAmp, Brain Products). Electrodes were referenced to FCz using AFz as ground during recording. Signals were digitized at 1000 Hz with a high-pass filter of 0.1 Hz. Electrode impedances were kept below 25 kOhm.

Preprocessing of EEG data was performed using Brainstorm 3.4<sup>62</sup> running on Matlab R2015b. EEG data were band-pass filtered (0.25–45 Hz for the main EEG analyses). Eye blinks were automatically detected using data from the FP1 electrode (i.e. a blink was detected if the band-pass (1.5–15 Hz) filtered EEG signal exceeded two times the STD; the minimum duration between two consecutive blinks was 800 ms). Signal-space projectors (SSPs) were created from band-pass filtered (1.5–15 Hz) 400 ms segments centered on detected blinks. The first spatial component of the SSPs was then used to correct blink artifacts in continuous EEG data. Further, all data were visually inspected for artifacts from blinks (i.e. residual blink artifacts after correction using SSPs), saccades, motion, electrode drifts or jumps and contaminated segments were discarded from further analysis (on average  $6.4 \pm 0.9\%$  SEM of all trials discarded). Finally, EEG data were re-referenced to the average of left and right mastoid electrodes and downsampled to 200 Hz. For analysis of event-related potentials (ERPs) and decoding analyses (see below), all EEG data were normalized with a 200 ms prestimulus baseline and were analyzed from 100 ms before stimulus onset up to 750 ms after stimulus onset, when the response screen was presented.

**EEG - Preprocessing for multivariate analyses.** Single-trial EEG data from the 64 electrodes were binned in time windows of 20 ms. Hence, given a sampling rate of 200 Hz, each 20 ms time window included four temporal sampling points. 64-electrode EEG activity vectors (for each time sample) were concatenated across the four sampling points within each bin resulting in a spatio-temporal EEG activity pattern of 256 features. EEG activity patterns were z scored to control for mean differences between conditions. The first sampling point in the 20 ms time window was taken as the window's time point in all analyses.

**Overview of EEG analyses.** We characterized the neural processes underlying multisensory integration by combining several analysis approaches:

1. Univariate EEG analysis: We identified multisensory integration by testing for audiovisual interactions focusing on the classical 'sound-induced flash illusion' conditions, where one flash is presented together with two beeps.
2. Multivariate EEG analysis and neural audiovisual weight index  $w_{AV}$ : We computed the audiovisual weight index  $w_{AV}$  which quantifies the relative influence of the true number of auditory and visual stimuli on the 'internal' numeric estimates decoded from EEG activity patterns using support-vector regression (see behavioral analysis above).
3. Multivariate EEG analysis and Bayesian Causal Inference model: We assessed how the numeric estimates obtained from the BCI model, i.e. the unisensory auditory and visual full-segregation, the forced-fusion and the Bayesian Causal Inference estimates (i.e. based on model averaging) are dynamically encoded in EEG activity pattern across post-stimulus time using representation dissimilarity analyses<sup>22</sup>. In supplementary analyses, we also directly decoded the numeric estimates from EEG activity patterns using support vector regression or canonical correlation analyses (Supplementary Methods and Supplementary Fig. 6).
4. Pre-stimulus EEG activity and parameters of the Bayesian Causal Inference model: We investigated whether the power or phase of brain oscillations as measured by EEG before the stimulus onset correlates with the causal prior or the visual precision parameters of the Bayesian Causal Inference model (selectively refitted to trials binned according to their oscillatory power or phase).

**EEG - Univariate analysis of audiovisual interactions.** To assess basic sensory components in ERPs and early audiovisual interactions, we averaged trial-wise EEG data time-logged to stimulus onset into ERPs for audiovisual congruent conditions. We then averaged the ERPs across centro-parietal electrodes (i.e. Cz, CP1, CPz, CP2, P1, Pz, P2; Fig. 1d) or occipital electrodes (i.e. O1, O2, Oz, PO3, POz, PO4; Fig. 1e). To analyze early audiovisual interactions as reported for the sound-induced flash illusion, we computed the difference between audiovisual and the corresponding unisensory conditions (i.e.  $A_1V_1A_2 - (A_1A_2 + V_1)$ )<sup>20,21</sup>. However, the auditory and visual trials were acquired in separate unisensory runs and may therefore differ in attentional and cognitive context. Further, our experimental design did not include null trials to account for anticipatory effects around stimulus onset and ensure a balanced audiovisual interaction contrast<sup>63</sup>. Hence, these audiovisual interactions need to be interpreted with caution. To test whether the difference wave deviated from zero at the group level, we used a non-parametric randomization test (5000 randomizations) in which we flipped the sign of the individual difference waves and computed two-sided one-sample *t* tests as a test statistic<sup>64</sup>. To correct for multiple comparisons across the sampling points, we used a cluster-based correction<sup>65</sup> with the sum of the *t* values across a cluster as cluster-level statistic and an auxiliary cluster-defining threshold of  $t = 2$  for each time point.

**EEG - Multivariate GLM-based analysis, decoding accuracy and audiovisual weight index.** For each 20 ms time window, we trained linear support-vector regression (SVR) models (libSVM 3.20<sup>66</sup>) to learn the mapping from spatio-temporal EEG activity patterns to the number of flash-beep stimuli of the audiovisually congruent conditions (including conditions of auditory and visual report) from all but one run. The SVRs' parameters (*C* and *v*) were optimized using a grid search within each cross-validation fold (i.e. nested cross-validation). Before training the SVR models, we recoded the stimulus numbers as labels to the range of  $[-1, 1]$  (i.e.  $-1 = 1$  stimulus;  $-0.33 = 2$  stimuli;  $0.33 = 3$  stimuli;  $1 = 4$  stimuli).

This learnt mapping from EEG activity patterns to external number of stimuli was then used to decode the number of stimuli from spatio-temporal EEG activity patterns of the audiovisual congruent and incongruent audiovisual conditions of the remaining run. In a leave-one-run-out cross-validation scheme, the training-test procedure was repeated for all runs. To account for SNR differences across runs, predicted stimulus numbers were z-scored within each run. The decoded stimulus numbers for the congruent and incongruent conditions were used to assess i. decoding accuracy based on congruent trials only and ii. to compute the audiovisual weight index  $w_{AV}$  in subsequent GLM-based analysis approaches (see below).

First, we computed decoding accuracy based selectively on the audiovisual congruent conditions. We decoded stimulus numbers 1–4 at all time points even though the distinctions between high flash and/or beep numbers (e.g. three vs. four) was only possible at later time points. Hence, as expected, the decoder was able to discriminate between higher stimulus numbers (e.g. three vs. four stimuli) only after about 250 ms (Fig. 3a). Next, we evaluated the decoder's accuracy in terms of the Pearson correlation between true and decoded stimulus number selectively in audiovisual congruent conditions (Fig. 3b). We tested whether individual Fisher's *z*-transformed correlation coefficients were larger than zero at the group level using a one-sided non-parametric randomization test (sign flip of correlation coefficient in 5000 randomizations) and a cluster-based correction for multiple comparisons across time intervals (as applied to difference waves, see above; cluster-level statistic: sum of the *t* values in a cluster; auxiliary cluster defining threshold  $t = 2$ ).

Second, we quantified the influence of the true number of auditory and visual stimuli on the decoded (neural) auditory or visual numeric estimates in a GLM-based analysis approach that was equivalent to our behavioral analysis. In a linear regression model<sup>11</sup>, the decoded number of stimuli was predicted by the true number of auditory and visual stimuli separately for the four conditions in the 2 (numeric disparity)  $\times$  2 (task relevance) factorial design (see behavioral analysis for further details). Statistical analysis was also equivalent to the behavioral analysis with the exception that we accounted for multiple comparisons across time using a cluster-based correction (cluster-level statistic: sum of the LRTS values in a cluster; auxiliary cluster defining threshold LRTS = 2). Unless otherwise stated, results are reported at  $p < 0.05$  corrected for multiple comparisons in EEG. For plotting circular means of  $w_{AV}$  (Fig. 3c), we computed the means' bootstrapped confidence intervals (1000 bootstraps).

**EEG - Multivariate analyses of BCI estimates.** To characterize the neural dynamics of Bayesian Causal Inference, we next investigated whether and when the four numeric estimates of the Bayesian Causal Inference (BCI) model are represented in EEG activity patterns using support-vector regression (i.e. similar to a previous fMRI study<sup>10</sup>), canonical correlation analysis and representational similarity analysis (RSA)<sup>22</sup>. Because these three analysis approaches yield comparable results, we focus in the main manuscript on the RSA (see Supplementary Methods and Supplementary Fig. 6).

To define the representational dissimilarity matrices (RDMs) for the RSA<sup>22</sup>, we computed the pairwise absolute distance between the BCI model's four numeric estimates, i.e. i. unisensory visual ( $\hat{N}_{V,C=2}$ ), ii. unisensory auditory ( $\hat{N}_{A,C=2}$ ) estimates, iii. forced-fusion ( $\hat{N}_{AV,C=1}$ ), iv. final BCI audiovisual numeric estimate

( $\hat{N}_A$  or  $\hat{N}_V$  depending on whether the auditory or visual modality were task relevant) as well as the posterior causal probability across all 32 conditions individually for each participant and then averaged those across participants (Fig. 2c). Likewise, we generated RDMs for the behavioral numeric reports by computing the pairwise absolute distance between the mean numeric reports across all 32 conditions for each participant and then averaged the individual RDMs across participants.

To resolve the evolution of the full-segregation auditory, full-segregation visual, forced-fusion and the BCI estimates in time, we correlated their RDMs with the EEG RDMs. The EEG RDMs were computed as the Mahalanobis distance between single-trial spatiotemporal EEG activity patterns for 20 ms time windows over conditions (c.f. decoding analysis above)<sup>67</sup>. More specifically, we computed the Mahalanobis distance from the activity patterns' variance-covariance matrix using the pattern-component modeling toolbox<sup>68</sup>. We quantified the similarity of the RDMs of the numeric estimates of the BCI model (Fig. 2c) with the EEG RDM at each 20 ms time interval using Spearman's rank correlation  $r$  (Fig. 4a; i.e. correlation of the RDMs' the upper triangular part). The Fisher's  $z$ -transformed correlation coefficients were tested against zero using a one-sided randomization test (sign flip of correlation coefficient in 5000 randomizations) and a cluster-based correction for multiple comparisons across time intervals (as applied to decoding accuracy, see above).

From the explained variance of the RDMs' correlation (i.e.  $r^2$ ), we computed the Bayesian Information Criterion as an approximation to the model evidence for each estimate and time point<sup>59</sup> ( $BIC = n * \log(1-r^2) + 1 * \log(n)$ ;  $n$  = number of EEG activity patterns). We entered these participant-specific model evidences in a random-effects group analysis to compute the protected exceedance probability (SPM12) that one numeric estimate was more likely encoded than any of the other estimates separately for each time interval (Fig. 4b; see above).

**EEG –The effect of prestimulus oscillations on the causal prior and the visual precision parameters.** We investigated whether prestimulus oscillatory power or phase over occipital electrodes (i.e. O1, O2, Oz, PO3, POz, PO4)<sup>15,16</sup> is related to the brain's prior binding tendency as quantified by the causal prior (i.e.  $p_{\text{common}}$ ) or the precision of the visual representation (i.e.  $1/\sigma_V^2$ ) as estimated in the BCI model. We band-pass filtered the continuous EEG data to 0.25–100 Hz with a notch filter at 50 Hz and re-epoched it into trials of  $-1.5$  to  $1$  s. Using complex Morlet wavelets (as implemented in Brainstorm<sup>62</sup>), we extracted the spectral power and phase of single-trial EEG data from  $-0.5$  s to  $+0.1$  s from 6 to 80 Hz in 2 Hz steps with the cycles increasing linearly from 5 to 13 cycles across frequencies<sup>69</sup>. We down-sampled the time-frequency representation to 50 Hz (i.e. 38 frequencies  $\times$  25 time points). First, based on previous research pointing towards a role of alpha, beta and gamma oscillations in the sound-induced illusion<sup>15,16</sup>, we investigated whether the oscillatory power in these bands prior to stimulus onset was correlated with  $p_{\text{common}}$  or  $\sigma_V$ . For each point in time-frequency space, we sorted and binned the trials according to their oscillatory power (or phase for alpha frequency) into 10 deciles separately for each of the 32 conditions to control for any condition-specific effects (cf. Fig. 1b)<sup>30</sup>. Using maximum likelihood estimation, we refitted selectively the  $p_{\text{common}}$  (resp.  $\sigma_V$ ) parameter of the BCI model to the multinomial distribution of observers' numeric reports over the 32 conditions separately for each decile (i.e. based on  $\sim 120$  trials), while fixing the remaining four BCI parameters to the parameters obtained from the estimation based on the complete data set (i.e. pooled over the 10 deciles). For each point in time-frequency space, we then computed the correlation between the oscillatory power (averaged across trials within a decile) and the BCI parameter (i.e.  $p_{\text{common}}$ ,  $\sigma_V$ ) over the 10 deciles for each participant. At the group level, we tested whether the Fisher's  $z$ -transformed correlation coefficients were significantly different from zero using a randomization test (i.e. sign flip of correlation coefficients in 5000 randomizations; test statistic: two-sided  $t$ -tests) and a cluster-based correction for multiple comparisons<sup>65</sup> separately for the alpha (8–12 Hz), beta (14–28 Hz) and gamma (30–80 Hz) bands (Fig. 5a; cluster-level statistic: sum of the  $t$  values in a cluster; auxiliary cluster threshold  $t = 2$ ). Note that initially, prior to the sort-and-bin approach, all five BCI parameters were re-fitted to the whole data set with valid EEG data. This additional refit was required because additional trials (i.e.  $2.9 \pm 0.4\%$  (mean  $\pm$  SEM) of trials) were rejected due to EEG artefacts in the longer epochs from  $-1.5$  s to  $1$  s. For illustrational purposes, we also computed the relative weight index  $w_{AV}$  for each decile both for the BCI model's predictions and the participants' numeric reports averaged across the significant clusters (Fig. 5c).

Second, based on previous research implicating prestimulus alpha phase in temporal binding<sup>23</sup>, we investigated whether the circular mean phase (i.e. averaged across trials within a decile) of alpha oscillations (8–12 Hz) was correlated with the BCI parameters (i.e.  $p_{\text{common}}$  or  $\sigma_V$ ) over alpha phase deciles using linear-circular correlation<sup>57</sup>. To enable an unbiased group-level statistic, we first randomized the assignment between mean circular phase and BCI parameters across the deciles (5000 randomizations) within each participant. Next, we computed the percentile of a participant's true circular-linear correlation in relation to this participant's null-distribution of circular-linear correlations. At the group level, we then tested whether the across-participants' mean percentile was significantly greater than 50% (i.e. the mean percentile under the null hypothesis) using a randomization test (i.e. sign flip of deviation of percentile from 50% in 5000 randomizations; test statistic: one-sided  $t$ -tests) and cluster-based correction for

multiple comparisons (Fig. 6a; cluster-level statistic: sum of the  $t$  values in a cluster; cluster threshold  $t = 2$ ).

To characterize the modulation of  $p_{\text{common}}$  by alpha phase, we first fitted a sine and cosine to  $p_{\text{common},dec}$  over alpha phase deciles  $\Phi_{dec}$  at 10 Hz individually to each participant's data, separately for each time point (Equation (8)). Thus, we computed the average phase  $\Phi_{dec}$  at 10 Hz across trials for each decile at a particular time point. We then used this average phase  $\Phi_{dec}$  in each decile at 10 Hz to predict  $p_{\text{common},dec}$  for this particular time point over deciles based on a sinusoidal model:

$$p_{\text{common},dec} = \beta_{\text{sin}} \sin(\Phi_{dec}) + \beta_{\text{cos}} \cos(\Phi_{dec}) + C + \varepsilon_{dec} \quad (8)$$

with  $p_{\text{common},dec}$  = causal prior estimated based on trials in a particular decile;  $\Phi_{dec}$  = across-trials average phase in a particular decile;  $C$  = constant

Crucially, this regression model (i.e. Equation (8)) estimates  $\beta_{\text{sin}}$  and  $\beta_{\text{cos}}$  independently for each time point. Thus, Equation (8) characterizes the relationship between alpha phase and  $p_{\text{common}}$  over deciles for a particular time point, so that the phase of this modulation can in principle vary across time (Fig. 6d).

Second, we fitted a more constrained regression model with one single sine and cosine at  $F = 10$  Hz that uses the  $\Phi_{dec,t}$  averaged over trials within a particular decile =  $dec$  at a time point =  $t$  to predict  $p_{\text{common},dec,t}$ . Hence, this model assumes that the modulation of  $p_{\text{common},dec,t}$  by alpha phase for each time point (i.e. a column in Fig. 6b) evolves slowly over time according to a 10 Hz alpha oscillatory rhythm:

$$p_{\text{common},dec,t} = \beta_{\text{sin}} \sin(2\pi Ft - \Phi_{dec,t}) + \beta_{\text{cos}} \cos(2\pi Ft - \Phi_{dec,t}) + C + \varepsilon_{dec,t} \quad (9)$$

$p_{\text{common},dec,t}$  = causal prior estimated over trials in a particular decile  $dec$  for time  $t$ ,  $\Phi_{dec,t}$  = across-trials average phase in a particular decile  $dec$  at time =  $t$ ;  $C$  = constant

The statistical significance of this model was assessed for the time window of  $-280$  up to  $-80$  ms encompassing the significant cluster (i.e. to include two alpha cycles; Fig. 6a) in each participant with an  $F$  test on the residual sum of squares against a reduced model that included only the constant  $C$  as a regressor (i.e.  $df1 = 2$ ;  $df2 = 107$ ; see Fig. 6b). Next, we assessed whether the phase angle of the alpha oscillation (i.e.  $\Phi_{\text{participant}} = \text{angle}(\beta_{\text{cos}} + i\beta_{\text{sin}})$  from equation (9)) was consistent across participants and hence deviated significantly from a circular uniform distribution using a Rayleigh test<sup>57</sup>. The distribution of phase angles over participants was not significantly different from uniformity, which can be explained by participant-specific cortical folding leading to differences in the orientation of the underlying neural sources. We therefore identified the peak in predicted  $p_{\text{common},dec}$  at  $t = -160$  ms in each participant (based on Equation (8)), computed the difference in deciles between the participant's peak decile and the group peak decile (Supplementary Fig. 5B) and then circularly shifted the predicted and observed  $p_{\text{common},dec}$  in each participant by this difference across all time points. As a consequence, the adjusted participant's peak is aligned with the predicted group peak  $p_{\text{common},dec}$  at  $t = -160$  ms and  $\Phi = -0.29\pi = 52^\circ$  (Supplementary Fig. 5A, B)<sup>29</sup>. Then we averaged the observed and predicted (cf. Equation (8))  $p_{\text{common}}$  across participants for illustrational purposes (Fig. 6c, d).

**EEG – The relation of prior stimulus history, prestimulus alpha power and the causal prior.** To investigate whether the numeric disparity of prior stimuli influences observers' causal prior, we sorted current trials according to whether previous trials up to the order of five were of small ( $\leq 1$ ) or large ( $\geq 2$ ) numeric disparity. We selectively refitted the causal prior (holding all other parameters fixed) separately depending on whether the 'previous trial of a specific order' was of small or large numeric disparity. We compared the causal prior for small vs. large numeric disparity conditions across participants using a 2 (numeric disparity: small vs. large)  $\times$  5 (stimulus order: 1, 2, 3, 4, 5 trials back) repeated-measures ANOVA. Post-hoc two-sided paired  $t$  tests were used to determine up to which trial order previous small numeric disparity led to a larger causal prior as expected.

To investigate whether alpha power (i.e. 8–12 Hz) mediates the effect of prior numeric disparity on the causal prior, we compared alpha power for previous large vs. small numeric disparity (i.e. selectively for order one, which had the greatest impact on causal prior) using a randomization test (i.e. a sign flip of power difference between previous large- vs. small-disparity trials in 5000 randomizations; test statistic: two-sided  $t$ -tests) and a cluster-based correction for multiple comparisons<sup>65</sup> (cluster-level statistic: sum of the  $t$  values in a cluster; auxiliary cluster threshold  $t = 2$ ).

Finally, we investigated whether the effect of previous numeric disparity interacts with the correlation between alpha power and the causal prior (i.e. moderation). For this, we first sorted trials according to whether the previous trial (i.e. only order one) was of small or large numeric disparity. We then sorted and binned the trials according to their oscillatory power into 10 deciles separately for previous small vs. large numeric disparity. We selectively recomputed the causal prior for each decile and assessed the influence of alpha power on the causal prior in terms of correlation coefficients separately for previous small and large numeric disparity exactly as in the our initial main analysis on alpha power (see above). Finally, we compared the Fisher's  $z$ -transformed correlation coefficients of alpha power with the causal prior for previous low and high numeric disparity trials in a randomization test (i.e. sign flip of  $z$ -transformed correlation differences in 5000



randomizations; test statistic: two-sided *t*-tests) and cluster-based correction for multiple comparisons (as described above).

**Assumptions and caveats of multisensory analysis approaches.** This study combined several complementary approaches to characterize the neural processes underlying multisensory integration<sup>70</sup>.

Univariate analyses and multisensory interactions: Consistent with previous research<sup>20,21,32</sup>, we identified multisensory integration in terms of audiovisual interactions, i.e. response non-linearities. As discussed in detail in Noppeney (2012)<sup>70</sup>, this approach is limited because single neuron recordings in neurophysiological research have demonstrated that sensory signals are also combined linearly. Linear multisensory integration processes would thus evade interaction analyses. Moreover, interactions computed as AV vs. A + V can result if processes are involved for each stimulus component such that the sum of the two unisensory and the multisensory conditions are not matched. For instance, if observers perform a task, decision- and response-preparation-related processes will be counted twice for the sum of the unisensory conditions (i.e. A + V), but be involved only once for the multisensory condition (i.e. AV). Likewise, early putative audiovisual interactions in EEG have been suggested to emerge because of anticipatory ERP effects that precede all stimulus presentations and are therefore counted twice for A + V, but only once for AV (see<sup>63</sup>). Therefore, multisensory interactions should optimally be computed including 'null events' to account for non-specific expectation effects (i.e. AV + Null vs. A + V). Further, in our study unisensory and multisensory conditions may differ in attentional context, because auditory and visual conditions were performed in separate experimental runs where either auditory or visual information were task-relevant. Collectively, these factors need to be taken into account when interpreting audiovisual interactions in EEG (or fMRI) responses in our and other studies.

Multivariate decoding: The EEG activity patterns measured across 64 scalp electrodes represent a superposition of activity generated by potentially multiple neural sources located for instance in auditory, visual or higher-order association areas. The extent to which auditory or visual information can be decoded from EEG activity pattern therefore depends inherently not only on how information is neurally encoded by the 'neural generators' in source space, but also on how these neural activities are expressed and superposed in sensor space (i.e. as measured by scalp electrodes). For example, the number of auditory beeps is perceptually more precisely represented than the number of flashes (based on observers' behavioral reports, Table 2), suggesting that the brain encodes the timing and number of events with a greater precision in audition than vision. Nevertheless, supplementary decoding analyses in sensor space revealed that the number of unisensory flashes can be more accurately decoded from EEG activity patterns than the number of unisensory beeps (Supplementary Fig. 2). These discrepancies between precision (or accuracy) measured at the behavioral/perceptual level and EEG decoding accuracy at the sensor level may result from differences in neural encoding in source space or how these neural activities are expressed in sensor space (e.g. source orientation, superposition etc.). Potentially, the greater decodability of visual numeric information may contribute to the visual bias we observed for the audiovisual weight index  $w_{AV}$  (i.e.,  $w_{AV} > 45^\circ$ ; Fig. 3c) and the dominance of the visual numeric estimates in our decoding analysis based on the estimates of the Bayesian Causal Inference model (Fig. 4a).

In the analysis of the audiovisual weight index  $w_{AV}$ , we trained the support-vector regression model on the audiovisual congruent conditions pooled over task relevance to ensure that the decoder was based on activity patterns generated by sources related to auditory, visual and audiovisual integration processes. Moreover, this approach ensures that the effects of task relevance on the audiovisual weight index  $w_{AV}$  cannot be attributed to differences in the decoding model (see<sup>71</sup> for a related discussion). In a supplementary analysis, we also trained the support-vector regression models separately for visual and auditory report and obtained comparable results (Supplementary Fig. 7) suggesting that our results are immune to this particular choice of the decoding approach. While the univariate interaction analysis (see above) cannot identify linear response combinations, this multivariate decoding analysis cannot exclude the possibility that auditory and visual stimuli jointly influence EEG activity pattern even though auditory and visual signals are not integrated at the single neuron level.

In our second multivariate analysis approach, we decoded (directly: support-vector regression, canonical correlation analysis; or indirectly: representational similarity analysis) the numeric estimates of the Bayesian Causal Inference model from EEG activity patterns and then computed the exceedance probability that one numeric estimate was more likely encoded than any other one. The decoding approaches using support-vector regression, canonical correlation analysis and representational similarity analysis provided comparable results indicating that our results are robust to the specific decoding approach (Fig. 4 and Supplementary Fig. 6). However, given the caveats discussed above (e.g. superposition of EEG activity patterns) and the high correlation between the different numeric estimates in the BCI model, it seems likely that multiple numeric estimates are concurrently represented in the brain even if the exceedance probability is high for only one particular numeric estimate.

**Reporting Summary.** Further information on experimental design is available in the Nature Research Reporting Summary linked to this article.

## Data availability statement

The raw behavioral and EEG datasets generated and analyzed in the current study are available in a G-Node repository<sup>72</sup>, [<https://doi.org/10.1038/s41467-019-09664-2>]. The source data underlying Figs. 1–7, Tables 1–2 and Supplementary Figs. 1–8 and Supplementary Table 1 are provided as a Source Data file in the same G-Node repository.

## Code availability

The Matlab code to fit the Bayesian Causal Inference model<sup>1</sup> to the behavioral data is available in a G-Node repository<sup>72</sup>, [<https://doi.org/10.1038/s41467-019-09664-2>]. Custom Matlab code for the analyses of EEG data are available from the corresponding author on reasonable request.

Received: 31 July 2018 Accepted: 14 March 2019

Published online: 23 April 2019

## References

- Kording, K. P. et al. Causal inference in multisensory perception. *PLoS ONE* **2**, pone.0000943 (2007).
- Shams, L. & Beierholm, U. R. Causal inference in perception. *Trends Cogn. Sci.* **14**, 425–432 (2010).
- Alais, D. & Burr, D. The ventriloquist effect results from near-optimal bimodal integration. *Curr. Biol.* **14**, 257–262 (2004).
- Ernst, M. O. & Banks, M. S. Humans integrate visual and haptic information in a statistically optimal fashion. *Nature* **415**, 429–433 (2002).
- Rohe, T. & Noppeney, U. Sensory reliability shapes perceptual inference via two mechanisms. *J. Vis.* **15**, 1–16 (2015).
- Odegaard, B. & Shams, L. The brain's tendency to bind audiovisual signals is stable but not general. *Psychol. Sci.* **27**, 583–591 (2016).
- Shams, L., Ma, W. J. & Beierholm, U. Sound-induced flash illusion as an optimal percept. *Neuroreport* **16**, 1923–1927 (2005).
- Shams, L., Kamitani, Y. & Shimojo, S. What you see is what you hear. *Nature* **408**, 788 (2000).
- Wallace, M. T. et al. Unifying multisensory signals across time and space. *Exp. Brain Res.* **158**, 252 (2004).
- Rohe, T. & Noppeney, U. Cortical hierarchies perform Bayesian causal inference in multisensory perception. *PLoS Biol.* **13**, pbio.1002073 (2015).
- Rohe, T. & Noppeney, U. Distinct computational principles govern multisensory integration in primary sensory and association cortices. *Curr. Biol.* **26**, 509–514 (2016).
- Friston, K. The free-energy principle: a unified brain theory? *Nat. Rev. Neurosci.* **11**, 127 (2010).
- Bastos, A. M. et al. Canonical microcircuits for predictive coding. *Neuron* **76**, 695–711 (2012).
- Lee, H. & Noppeney, U. Temporal prediction errors in visual and auditory cortices. *Curr. Biol.* **24**, R309–R310 (2014).
- Keil, J., Müller, N., Hartmann, T. & Weisz, N. Prestimulus beta power and phase synchrony influence the sound-induced flash illusion. *Cereb. Cortex* **24**, 1278–1288 (2013).
- Lange, J., Oostenveld, R. & Fries, P. Reduced occipital alpha power indexes enhanced excitability rather than improved visual perception. *J. Neurosci.* **33**, 3212–3220 (2013).
- Andersen, T. S., Tiippana, K. & Sams, M. Factors influencing audiovisual fission and fusion illusions. *Brain Res. Cogn. Brain Res.* **21**, 301–308 (2004).
- Wozny, D. R., Beierholm, U. R. & Shams, L. Human trimodal perception follows optimal statistical inference. *J. Vis.* **8**, 24–24 (2008).
- Wozny, D. R., Beierholm, U. R. & Shams, L. Probability matching as a computational strategy used in perception. *PLoS Comput. Biol.* **6**, <https://doi.org/10.1371/journal.pcbi.1000871> (2010).
- Mishra, J., Martinez, A., Sejnowski, T. J. & Hillyard, S. A. Early cross-modal interactions in auditory and visual cortex underlie a sound-induced visual illusion. *J. Neurosci.* **27**, 4120–4131 (2007).
- Shams, L., Iwaki, S., Chawla, A. & Bhattacharya, J. Early modulation of visual cortex by sound: an MEG study. *Neurosci. Lett.* **378**, 76–81 (2005).
- Kriegeskorte, N., Mur, M. & Bandettini, P. A. Representational similarity analysis-connecting the branches of systems neuroscience. *Front. Syst. Neurosci.* **2**, 4 (2008).
- VanRullen, R. Perceptual cycles. *Trends Cogn. Sci.* **20**, 723–735 (2016).
- Gau, R. & Noppeney, U. How prior expectations shape multisensory perception. *Neuroimage* **124**, 876–886 (2016).
- Nahorna, O., Berthommier, F. & Schwartz, J.-L. Audio-visual speech scene analysis: characterization of the dynamics of unbinding and rebinding the McGurk effect. *J. Acoust. Soc. Am.* **137**, 362–377 (2015).

26. Odegaard, B., Wozny, D. R. & Shams, L. A simple and efficient method to enhance audiovisual binding tendencies. *PeerJ* **5**, e3143 (2017).
27. Iemi, L., Chaumon, M., Crouzet, S. M. & Busch, N. A. Spontaneous neural oscillations bias perception by modulating baseline excitability. *J. Neurosci.* **37**, 807–819 (2017).
28. Wyart, V. & Tallon-Baudry, C. How ongoing fluctuations in human visual cortex predict perceptual awareness: baseline shift versus decision bias. *J. Neurosci.* **29**, 8715–8725 (2009).
29. Busch, N. A., Dubois, J. & VanRullen, R. The phase of ongoing EEG oscillations predicts visual perception. *J. Neurosci.* **29**, 7869–7876 (2009).
30. Hanslmayr, S. et al. Prestimulus oscillations predict visual perception performance between and within subjects. *Neuroimage* **37**, 1465–1473 (2007).
31. Busch, N. A. & VanRullen, R. Spontaneous EEG oscillations reveal periodic sampling of visual attention. *Proc. Natl Acad. Sci. USA* **107**, 16048–16053 (2010).
32. Mishra, J., Martínez, A. & Hillyard, S. A. Effect of attention on early cortical processes associated with the sound-induced extra flash illusion. *J. Cogn. Neurosci.* **22**, 1714–1729 (2010).
33. Tomov, M. S., Dorfman, H. M. & Gershman, S. J. Neural computations underlying causal structure learning. *J. Neurosci.* **38**, 7143–7157 (2018).
34. Rohe, T. & Noppeney, U. Reliability-Weighted Integration of Audiovisual Signals Can Be Modulated by Top-down Attention. *eNeuro* **5**, <https://doi.org/10.1523/eneuro.0315-17.2018> (2018).
35. Cuppini, C., Magosso, E., Bolognini, N., Vallar, G. & Ursino, M. A neurocomputational analysis of the sound-induced flash illusion. *Neuroimage* **92**, 248–266 (2014).
36. Cuppini, C., Shams, L., Magosso, E. & Ursino, M. A biologically inspired neurocomputational model for audiovisual integration and causal inference. *Eur. J. Neurosci.* **46**, 2481–2498 (2017).
37. Knill, D. C. & Pouget, A. The Bayesian brain: the role of uncertainty in neural coding and computation. *Trends Neurosci.* **27**, 712–719 (2004).
38. Sherman, M. T., Kanai, R., Seth, A. K. & VanRullen, R. Rhythmic influence of top-down perceptual priors in the phase of prestimulus occipital alpha oscillations. *J. Cogn. Neurosci.* **28**, 1318–1330 (2016).
39. Yuval-Greenberg, S., Tomer, O., Keren, A. S., Nelken, I. & Deouell, L. Y. Transient induced gamma-band response in EEG as a manifestation of miniature saccades. *Neuron* **58**, 429–441 (2008).
40. Mazaheri, A. & Jensen, O. Asymmetric amplitude modulations of brain oscillations generate slow evoked responses. *J. Neurosci.* **28**, 7781–7787 (2008).
41. Jensen, O., Gips, B., Bergmann, T. O. & Bonnefond, M. Temporal coding organized by coupled alpha and gamma oscillations prioritize visual processing. *Trends Neurosci.* **37**, 357–369 (2014).
42. Milton, A. & Pleydell-Pearce, C. W. The phase of pre-stimulus alpha oscillations influences the visual perception of stimulus timing. *Neuroimage* **133**, 53–61 (2016).
43. Samaha, J. & Postle, B. R. The speed of alpha-band oscillations predicts the temporal resolution of visual perception. *Curr. Biol.* **25**, 2985–2990 (2015).
44. Wutz, A., Melcher, D. & Samaha, J. Frequency modulation of neural oscillations according to visual task demands. *Proc. Natl Acad. Sci. USA* **115**, 1346–1351 (2018).
45. Cecere, R., Rees, G. & Romei, V. Individual differences in alpha frequency drive crossmodal illusory perception. *Curr. Biol.* **25**, 231–235 (2015).
46. Jensen, O. & Mazaheri, A. Shaping functional architecture by oscillatory alpha activity: gating by inhibition. *Front. Hum. Neurosci.* **4**, 186 (2010).
47. Cao, Y., Summerfield, C., Park, H., Giordano, B. L. & Kayser, C. Causal inference in the multisensory brain. Preprint at <https://www.biorxiv.org/content/10.1101/500413v1>. (2018).
48. Aller, M. & Noppeney, U. To integrate or not to integrate: Temporal dynamics of Bayesian Causal Inference. *PLoS Biol.* **17**, pbio.3000210 (2019).
49. Bastos, A. M. et al. Visual areas exert feedforward and feedback influences through distinct frequency channels. *Neuron* **85**, 390–401 (2015).
50. Bauer, M., Stenner, M. P., Friston, K. J. & Dolan, R. J. Attentional modulation of alpha/beta and gamma oscillations reflect functionally distinct processes. *J. Neurosci.* **34**, 16117–16125 (2014).
51. Arnal, L. H. & Giraud, A.-L. Cortical oscillations and sensory predictions. *Trends Cogn. Sci.* **16**, 390–398 (2012).
52. Brainard, D. H. The psychophysics toolbox. *Spat. Vis.* **10**, 433–436 (1997).
53. Anderson, C. M. & Wu, C. F. J. Measuring location effects from factorial experiments with a directional response. *Int. Stat. Rev.* **63**, 345–363 (1995).
54. Anderson, M. & Braak, C. T. Permutation tests for multi-factorial analysis of variance. *J. Stat. Comput. Simul.* **73**, 85–113 (2003).
55. Anderson, M. J. Permutation tests for univariate or multivariate analysis of variance and regression. *Can. J. Fish. Aquat. Sci.* **58**, 626–639 (2001).
56. Edgington, E. & Onghena, P. Randomization tests. (CRC Press, 2007).
57. Berens, P. CircStat: A MATLAB toolbox for circular statistics. *J. Stat. Softw.* **31**, 1–21 (2009).
58. Nagelkerke, N. J. A note on a general definition of the coefficient of determination. *Biometrika* **78**, 691–692 (1991).
59. Raftery, A. E. Bayesian model selection in social research. *Sociol. Methodol.* **25**, 111–163 (1995).
60. Rigoux, L., Stephan, K. E., Friston, K. J. & Daunizeau, J. Bayesian model selection for group studies—revisited. *Neuroimage* **84**, 971–985 (2014).
61. Friston, K. J. et al. Statistical parametric maps in functional imaging: a general linear approach. *Hum. Brain. Mapp.* **2**, 189–210 (1994).
62. Tadel, F., Baillet, S., Mosher, J. C., Pantazis, D. & Leahy, R. M. Brainstorm: a user-friendly application for MEG/EEG analysis. *Comput. Intell. Neurosci.* **2011**, 8 (2011).
63. Teder-Salejarvi, W. A., McDonald, J. J., Di Russo, F. & Hillyard, S. A. An analysis of audio-visual crossmodal integration by means of event-related potential (ERP) recordings. *Brain. Res. Cogn. Brain. Res.* **14**, 106–114 (2002).
64. Nichols, T. E. & Holmes, A. P. Nonparametric permutation tests for functional neuroimaging: a primer with examples. *Hum. Brain. Mapp.* **15**, 1–25 (2002).
65. Maris, E. & Oostenveld, R. Nonparametric statistical testing of EEG- and MEG-data. *J. Neurosci. Methods* **164**, 177–190 (2007).
66. Chang, C. C. & Lin, C. J. LIBSVM: a library for support vector machines. *ACM Trans. Intell. Syst. Technol.* **2**, 27 (2011).
67. Nili, H. et al. A toolbox for representational similarity analysis. *PLoS Comp. Biol.* **10**, <https://doi.org/10.1371/journal.pcbi.1003553> (2014).
68. Diedrichsen, J., Yokoi, A. & Arbuckle, S. A. Pattern component modeling: a flexible approach for understanding the representational structure of brain activity patterns. *Neuroimage* **180**(Pt A), 119–133 (2017).
69. Cohen, M. X. Analyzing neural time series data: theory and practice. (MIT Press, 2014).
70. Noppeney, U. In *The Neural Bases of Multisensory Processes* (eds M. M. Murray & M. T. Wallace) (CRC Press/Taylor & FrancisLlc., 2012).
71. Fetsch, C. R., Pouget, A., DeAngelis, G. C. & Angelaki, D. E. Neural correlates of reliability-based cue weighting during multisensory integration. *Nat. Neurosci.* **15**, 146 (2012).
72. Rohe, T., Ehlis, A.-C. & Noppeney, U. The neural dynamics of hierarchical Bayesian causal inference in multisensory perception. *G-Node* [https://doi.org/10.1007/978-3-319-94971-7\\_1](https://doi.org/10.1007/978-3-319-94971-7_1) (2019).

## Acknowledgements

This study was funded by the University of Tuebingen (Fortüne grant numbers 2292–0–0 and 2454–0–0), the Deutsche Forschungsgemeinschaft (DFG; grant number RO 5587/1–1) and the ERC (ERC-multisens, 309349). We thank Ramona Täglic and Larissa Metzler for help with the data collection.

## Author contributions

T.R., A.C.E. and U.N. analyzed the data. T.R. and U.N. wrote the manuscript. T.R. conceived the experiment and collected the data.

## Additional information

**Supplementary Information** accompanies this paper at <https://doi.org/10.1038/s41467-019-09664-2>.

**Competing interests:** The authors declare no competing interests.

**Reprints and permission** information is available online at <http://npg.nature.com/reprintsandpermissions/>

**Journal peer review information:** *Nature Communications* thanks Karl Friston, Sophie Molholm, and other anonymous reviewer(s) for their contribution to the peer review of this work.

**Publisher's note:** Springer Nature remains neutral with regard to jurisdictional claims in published maps and institutional affiliations.



**Open Access** This article is licensed under a Creative Commons Attribution 4.0 International License, which permits use, sharing, adaptation, distribution and reproduction in any medium or format, as long as you give appropriate credit to the original author(s) and the source, provide a link to the Creative Commons license, and indicate if changes were made. The images or other third party material in this article are included in the article's Creative Commons license, unless indicated otherwise in a credit line to the material. If material is not included in the article's Creative Commons license and your intended use is not permitted by statutory regulation or exceeds the permitted use, you will need to obtain permission directly from the copyright holder. To view a copy of this license, visit <http://creativecommons.org/licenses/by/4.0/>.

© The Author(s) 2019