

## Traffic exposures, air pollution and outcomes in pulmonary arterial hypertension

Sofianopoulou, E; Kaptoge, S; Graf, S; Hadinnapola, C; Treacy, CM; Church, C; Coghlan, G; Gibbs, JSR; Haimel, M; Howard, L; Johnson, M; Kiely, DG; Lawrie, A; Lordan, J; MacKenzie Ross, RV; Martin, JM; Moledina, S; Newnham, Michael; Peacock, AJ; Price, L

DOI:

[10.1183/13993003.01429-2018](https://doi.org/10.1183/13993003.01429-2018)

License:

Other (please specify with Rights Statement)

*Document Version*

Peer reviewed version

*Citation for published version (Harvard):*

Sofianopoulou, E, Kaptoge, S, Graf, S, Hadinnapola, C, Treacy, CM, Church, C, Coghlan, G, Gibbs, JSR, Haimel, M, Howard, L, Johnson, M, Kiely, DG, Lawrie, A, Lordan, J, MacKenzie Ross, RV, Martin, JM, Moledina, S, Newnham, M, Peacock, AJ, Price, L, Rhodes, CJ, Suntharalingam, J, Swietlik, EM, Toshner, MR, Wharton, J, Wilkins, MR, Wort, SJ, Pepke-Zaba, J, Condliffe, R, Corris, PA, Di Angelantonio, E, Provencher, S & Morrell, NW 2019, 'Traffic exposures, air pollution and outcomes in pulmonary arterial hypertension: a UK cohort study analysis', *The European respiratory journal*, vol. 53, no. 5, 1801429. <https://doi.org/10.1183/13993003.01429-2018>

[Link to publication on Research at Birmingham portal](#)

**Publisher Rights Statement:**

Checked for eligibility: 09/05/2019

This is an author-submitted, peer-reviewed version of a manuscript that has been accepted for publication in the European Respiratory Journal, prior to copy-editing, formatting and typesetting. This version of the manuscript may not be duplicated or reproduced without prior permission from the copyright owner, the European Respiratory Society. The publisher is not responsible or liable for any errors or omissions in this version of the manuscript or in any version derived from it by any other parties. The final, copy-edited, published article, which is the version of record, is available without a subscription 18 months after the date of issue publication.

<https://doi.org/10.1183/13993003.01429-2018>

**General rights**

Unless a licence is specified above, all rights (including copyright and moral rights) in this document are retained by the authors and/or the copyright holders. The express permission of the copyright holder must be obtained for any use of this material other than for purposes permitted by law.

- Users may freely distribute the URL that is used to identify this publication.
- Users may download and/or print one copy of the publication from the University of Birmingham research portal for the purpose of private study or non-commercial research.
- User may use extracts from the document in line with the concept of 'fair dealing' under the Copyright, Designs and Patents Act 1988 (?)
- Users may not further distribute the material nor use it for the purposes of commercial gain.

Where a licence is displayed above, please note the terms and conditions of the licence govern your use of this document.

When citing, please reference the published version.

**Take down policy**

While the University of Birmingham exercises care and attention in making items available there are rare occasions when an item has been uploaded in error or has been deemed to be commercially or otherwise sensitive.

If you believe that this is the case for this document, please contact [UBIRA@lists.bham.ac.uk](mailto:UBIRA@lists.bham.ac.uk) providing details and we will remove access to the work immediately and investigate.

# TRAFFIC EXPOSURES, AIR POLLUTION AND OUTCOMES IN PULMONARY ARTERIAL HYPERTENSION: A UNITED KINGDOM COHORT STUDY ANALYSIS

Eleni Sofianopoulou<sup>1</sup>, Stephen Kaptoge<sup>1</sup>, Stefan Gräf<sup>2,3,4</sup>, Charaka Hadinnapola<sup>2</sup>, Carmen M. Treacy<sup>2,6</sup>, Colin Church<sup>17</sup>, Gerry Coghlan<sup>12</sup>, J. Simon R. Gibbs<sup>11</sup>, Matthias Haimel<sup>2</sup>, Luke Howard<sup>10</sup>, Martin Johnson<sup>17</sup>, David G. Kiely<sup>8</sup>, Allan Lawrie<sup>9</sup>, James Lordan<sup>7</sup>, Robert V. MacKenzie Ross<sup>18</sup>, Jennifer M. Martin<sup>2,3,4</sup>, Shahin Moledina<sup>13</sup>, Michael Newnham<sup>2</sup>, Andrew J. Peacock<sup>17</sup>, Laura Price<sup>14</sup>, Christopher J. Rhodes<sup>10</sup>, Jay Suntharalingam<sup>18</sup>, Emilia M. Swietlik<sup>2</sup>, Mark R. Toshner<sup>2</sup>, John Wharton<sup>10</sup>, Martin R. Wilkins<sup>10</sup>, Stephen J. Wort<sup>14,10</sup>, Joanna Pepke-Zaba<sup>6</sup>, Robin Condliffe<sup>8</sup>, Paul A. Corris<sup>7</sup>, Emanuele Di Angelantonio<sup>1</sup>, Steeve Provencher<sup>22</sup>, Nicholas W. Morrell<sup>2,4</sup>

1. Department of Public Health and Primary Care, Cardiovascular Epidemiology Unit, University of Cambridge, Cambridge, CB1 8RN, United Kingdom
2. Department of Medicine, University of Cambridge, Cambridge, CB2 0QQ, United Kingdom
3. Department of Haematology, University of Cambridge, Cambridge, CB2 0PT, United Kingdom
4. NIHR BioResource - Rare Diseases, Cambridge, CB2 0PT, United Kingdom
5. Addenbrooke's Hospital, Cambridge, CB2 0QQ, United Kingdom
6. Royal Papworth Hospital, Papworth, CB23 3RE, United Kingdom
7. University of Newcastle, Newcastle, NE1 7RU, United Kingdom
8. Sheffield Pulmonary Vascular Disease Unit, Royal Hallamshire Hospital, Sheffield, S10 2JF, United Kingdom
9. Department of Infection, Immunity & Cardiovascular Disease, University of Sheffield, Sheffield, S10 2RX, United Kingdom
10. Imperial College London, London, SW7 2AZ, United Kingdom
11. National Heart & Lung Institute, Imperial College London, London, SW3 6LY, United Kingdom
12. Royal Free Hospital, London, NW3 2QG, United Kingdom
13. Great Ormond Street Hospital, London, WC1N 3JH, United Kingdom
14. Royal Brompton Hospital, London, SW3 6NP, United Kingdom
15. Division of Genetics & Molecular Medicine, King's College London, London, WC2R 2LS, United Kingdom
16. Institute of Medical and Biomedical Education, St George's University of London, London, SW17 0RE, United Kingdom
17. Golden Jubilee National Hospital, Glasgow, G81 4DY, United Kingdom
18. Royal United Hospitals Bath NHS Foundation Trust, Bath, BA1 3NG, United Kingdom
19. Wellcome Trust Sanger Institute, Hinxton, CB10 1SA, United Kingdom
20. Molecular and Clinical Sciences Research Institute, St George's, University of London, London, SW17 0RE, United Kingdom
21. Blizard Institute, Queen Mary University of London, London, E1 2AT, United Kingdom
22. Pulmonary Hypertension Research Group, Institut universitaire de cardiologie et de pneumologie de Québec Research Center, Laval University, Québec, G1V 4G5, Canada

Abstract word count: 208

Manuscript word count: 3469

Number of tables: 3

Number of figures: 4

Number of references: 44

**Take home message: 253-characters**

In idiopathic pulmonary arterial hypertension, exposure to indirect measures of traffic-related air pollution was associated with hemodynamic severity and ERS/ESC risk score at baseline, whereas exposure to PM<sub>2.5</sub> was associated with long-term prognosis.

## ABSTRACT

While traffic and air pollution exposure is associated with increased mortality in numerous diseases, its association with disease severity and outcomes in pulmonary arterial hypertension (PAH) remains unknown.

Exposure to particulate matter  $\leq 2.5\mu\text{m}^3$  (PM<sub>2.5</sub>), nitrogen dioxide (NO<sub>2</sub>) and indirect measures of traffic-related air pollution (distance to main road and length of roads within buffer zones surrounding residential addresses) were estimated for 301 patients with idiopathic/heritable PAH recruited in the UK PAH national Cohort study. Associations with transplant-free survival and pulmonary hemodynamic severity at baseline were assessed, adjusting for confounding variables defined a priori.

Higher estimated exposure to PM<sub>2.5</sub> was associated with higher risk of death or lung transplant (Unadjusted hazard ratio (HR) 2.68;95%CI 1.11-6.47 per  $3\mu\text{g}/\text{m}^3$ ,  $p=0.028$ ). This association remained similar when adjusted for potential confounding variables (HR 4.38;95%CI 1.44-13.36 per  $3\mu\text{g}/\text{m}^3$ ,  $p=0.009$ ). No associations were found between NO<sub>2</sub> exposure or other traffic pollution indicators and *transplant-free survival*. Conversely, indirect measures of exposure to traffic-related air pollution within the 500-1000m buffer zones correlated with the ERS/ESC risk categories as well as pulmonary hemodynamics at baseline. This association was strongest for pulmonary vascular resistance.

In idiopathic/heritable PAH, indirect measures of exposure to traffic-related air pollution were associated with disease severity at baseline, whereas higher PM<sub>2.5</sub> exposure may independently predict shorter transplant-free survival.

**Keywords:** pulmonary hypertension, pulmonary arterial hypertension, air pollution, traffic pollution, prognosis, pulmonary vascular resistance.

## INTRODUCTION

Air pollution is an important contributor to premature deaths with over 7 million deaths per year being attributable to traffic and air pollution exposure worldwide [1]. Enhanced exposure to multiple air pollutants, including nitrogen dioxide (NO<sub>2</sub>), sulfur dioxide (SO<sub>2</sub>) and fine particulate matter with an aerodynamic diameter of <2.5 μm (PM<sub>2.5</sub>) have been described as independent risk factors for mortality and hospitalisations in the general population [2, 3]. This has also been observed in specific chronic health conditions, including chronic obstructive pulmonary disease [4, 5], pulmonary fibrosis [6-9] and cardiovascular diseases [10]. Of all of these pollutants, PM<sub>2.5</sub> has the greatest effect on human health [2, 11]. Over two thirds of premature deaths attributable to ambient PM<sub>2.5</sub> air pollution are due to cardiovascular disease [3, 12]. Both acute and chronic exposure to PM<sub>2.5</sub> increases the risk of cardiovascular death [2, 13], although long-term effects of PM<sub>2.5</sub> appear to have a greater impact on cardiovascular mortality [10, 14]. Amongst cardiovascular events, the occurrence of heart failure exhibited the strongest association with PM<sub>2.5</sub> exposure [13, 15].

Limited data are available regarding the association between air pollution and outcomes in pulmonary arterial hypertension (PAH), a disease characterised by vasoconstriction and obliterative changes in the small pulmonary arteries, leading to right ventricular (RV) failure and death. As for other respiratory diseases, the close relationship between the pulmonary vascular bed and alveolar ventilation makes it highly plausible that air pollution directly affects the pulmonary circulation. Not surprisingly, preclinical studies have suggested that prolonged exposure to particulate and soluble antigens can induce changes in pulmonary arteries [16] and that diesel exhaust exposure induces pulmonary hypertension in mice [17]. Imaging studies also found an association between air pollution and changes in RV mass and function within the general population [18, 19]. Since RV function has been repeatedly shown to represent a major determinant of prognosis in PAH [20], we hypothesized that exposure to air pollution is associated with disease severity and outcomes in PAH.

## **METHODS**

### **Study population and socioeconomic status**

Patients were recruited prospectively from the United Kingdom (UK) national Cohort study of idiopathic and heritable PAH ([www.ipahcohort.com](http://www.ipahcohort.com)), a multicentre prospective study investigating the genetic and environmental causes of PAH (*see online supplement for details*). Consecutive patients with idiopathic and heritable PAH were then invited to complete a comprehensive epidemiological questionnaire. They were considered eligible if they maintained the same address since diagnosis to minimize the risk of exposure misclassification. Potential confounding due to socioeconomic status [21] was addressed by assigning an area-level deprivation to their residential address for each patient using time-weighted Townsend deprivation quantiles that are available for the UK (<https://data.mendeley.com/datasets/389scndjy/1>). Moreover, household income data were collected via questionnaire, taking into account household size and composition [22]. We also accounted for the level of education collected via the epidemiological questionnaire using nine International Standard Classification of Education (ISCED) codes that were collapsed to three categories (Primary & Lower Secondary, Upper & Post-Secondary and Tertiary) as a measure of socioeconomic status. The Regional Ethics Committee approved this study (REC 13/EE/0203) and participants provided written informed consent. Area-level and individual-level deprivation indicators were used in all statistical analyses, given the recognised confounding between deprivation and exposure to air pollution.

### **Air pollution exposure measures**

Each participant's residential address was assigned a geographic coordinate using QGIS v2.18 software (<https://qgis.org>) in conjunction with the UK geocoding database (<http://dx.doi.org/10.5257/census/geoconvert-1>). The geocoded patients' residential addresses were linked to average levels of PM<sub>2.5</sub> and NO<sub>2</sub> annual means using existing 2010 UK-wide maps (**Figure S1**), which were based on routine air pollution monitoring data incorporating satellite-derived and

chemical transport model estimates plus road and land use data [23]. We assessed associations between mortality as well as disease severity with exposure to increases of 3  $\mu\text{g}/\text{m}^3$  for  $\text{PM}_{2.5}$  and 10  $\mu\text{g}/\text{m}^3$  for  $\text{NO}_2$  that correspond to observed interquartile ranges rounded to the nearest integer. We also acquired air pollution monitoring data from the Automatic Urban and Rural Network for the period 01/01/1999–31/12/2017. We obtained hourly data for  $\text{PM}_{2.5}$  and  $\text{NO}_2$  from 59 and 73 monitors, respectively, and computed daily averages (**Figure S2**). To link monitoring data to each residential postal code, we identified the nearest monitoring site within 50 km of the postal code (based on centroid point) and assigned air pollutant measurements to that postal code. If there were no monitoring sites within the 50 km zones, we treated the monitored exposure level as missing and excluded that postal code from the analysis. We estimated cumulative air pollution concentrations at lags of 0, 3, 7 and 14 days to assess short-term effects of air pollution concentrations on pulmonary haemodynamics at the time of diagnosis. Finally, residential proximity to motorways and A-roads, which form the major road network in the country, as well as total length of roads within different buffers (100, 200, 500 and 1000 meters) around patients' home addresses were estimated as indicators of traffic related air pollution (**Figure S3**).

### **Health outcome measures**

The primary outcome measure was transplant-free survival from time of diagnosis. We also assessed whether markers of air pollution correlated with disease severity, using baseline pulmonary hemodynamic data, namely pulmonary vascular resistance (PVR), mean pulmonary arterial pressure (PAP), cardiac index (CI) and right atrial pressure (RAP). We finally assessed whether markers of air pollution are associated with the abbreviated 2015 European Society of Cardiology (ESC)/European Respiratory Society (ERS) risk stratification strategy, as previously described (**Table S1**) [24].

## Statistical analysis

Associations of air pollution exposure estimates with risk of death or lung transplantation were assessed based on hazard ratios (HR) from Cox proportional hazards regression models. In the crude model, we stratified by centre, allowing baseline hazards to be unique for each stratum. In the primary adjustment model, we further adjusted for age, sex and World Health Organisation (WHO) functional class. We fitted a further-adjusted model accounting for additional confounders including area and individual-level deprivation, smoking status at diagnosis (current/former/never), season, body mass index, bone morphogenetic protein receptor type II (BMP2) gene mutation and whether the patient was incident (diagnosed for <6 months at study entry) or prevalent. The latter adjustment controlled for any potential survivor bias introduced by the inclusion of prevalent cases in the survival analysis. The covariates were chosen a priori on the basis of potential confounding when assessing health effects of air pollution exposures in PAH. The same covariates were also used in models for disease severity associations.

In survival analysis, we added the ERS/ESC risk category and emphysema as covariables, due to their known effect on mortality as well as data completeness. Given the relatively small number of deaths, we consider the crude and primary adjustment models as reasonable, but caution over interpretation of results from the further adjusted model due to overfitting. To minimize the scope for potential survivor bias due to inclusion of prevalent patients, Cox proportional hazards regression models and survival curves were fitted allowing for left truncation arising from the interval between diagnosis and enrolment. Prevalent patients were only included in the risk set from the time of study entry and were excluded if they entered the study more than 10 years after diagnosis.

Linear mixed-effects regression was used to characterise the relationships between air pollution measures and pulmonary haemodynamics, grouping observations by centre. As the haemodynamic outcome variables were natural log-transformed, the estimated regression coefficients (“ $\beta$  - coefficients”) were exponentiated (i.e.  $e^{\beta}$ ) and more naturally interpreted as the expected relative (or



percentage) change in outcome. The interpretation of results with outcomes modelled on the logarithmic scale is presented in the online supplement. The relationship between air pollution measures and ERS/ESC clinical risk prediction tool (low, intermediate or high-risk categories) was similarly evaluated, using multinomial logistic regression. We excluded the functional class variable from the further-adjusted model, as it is required for the estimation of ERS/ESC risk score at baseline.

In order to make the survival analysis models (crude, primary and further-adjusted) as comparable as possible, we used a complete-case dataset (N=286) with no missing data of all the variables used for adjustment. We further limited this dataset to a complete-case dataset for haemodynamic variables (N=243) for the disease severity analyses. It was considered unreasonable to conduct multiple imputation analysis as haemodynamics were the health outcomes. The variables of the “nearest monitor” exposure analysis were exempted from the complete-case datasets, due to large numbers of missing records on the air pollution time series around the patients’ diagnosis dates.

When assessing associations with length of road, we accounted for the absence of a major road within the 500-1000m buffer zones around residences by adding a binary (yes/no) variable on the respective models. We did not model the effect of length of road within the 100-200m buffer zones as only few participants had a major road within these zones. The traffic exposure indicators were log transformed. Therefore log-log regression models were fitted when assessing their association to haemodynamic measures. The exponentiated association estimates were naturally interpreted as expected relative (or percentage) change in haemodynamic outcome for a percent increase in the traffic exposure indicators. Further information on the interpretation of these models is presented in the *online supplement*. Methods used to assess the validity of the models and the robustness of the final results are also presented in the *online supplement*. Data were presented as means  $\pm$  standard deviation or median [interquartile range] according to data distribution. Analyses were performed using R software, version 3.4.1 (R Project for Statistical Computing), and STATA

software, version 14 (StataCorp, College Station, TX, USA). P values <0.05 were considered as statistically significant.

## RESULTS

Of 537 patients recruited in the UK PAH Cohort from Jan 2014 to February 2018, 406 patients were offered and accepted to complete the questionnaire. One hundred of them were excluded as they moved since diagnosis, and 5 were excluded as coordinates/addresses were missing, leaving 301 patients for analysis (**Figure 1**). These patients were recruited in 7 UK PAH expert centres (**Table S2**). The non-eligible participants were older and more likely to be incident cases (**Table S3**). Characteristics of the study participants are described in **Table 1**, and were comparable to complete-case datasets used for modelling (**Tables S4**). **Table 2** provides summaries of ambient and traffic-related air pollution indicators.

During a mean follow-up of 3.5 years (4.5 years for prevalent cases), 35 (13%) participants died and 5 (2%) were transplanted, resulting in a 1, 3 and 5-year transplant-free survival estimates of 97%, 85% and 67% for incident patients, and 100%, 100% and 88% for prevalent patients, respectively. The distribution of PM<sub>2.5</sub> exposure, among those participants who died compared to those who did not, is presented in **Figure S4**. Exposure to higher PM<sub>2.5</sub> annual (2010) mean concentrations was associated with higher risk of death or lung transplant (Unadjusted HR (2.68;95%CI 1.11-6.47 per 3µg/m<sup>3</sup>,p=0.028) (**Table 3**). Similar estimates were observed when adjusting for potential confounding variables (HR 4.38;95%CI 1.44-13.36 per 3µg/m<sup>3</sup>,p=0.009). Conversely, no associations were found between recent exposure to PM<sub>2.5</sub> at the time of baseline catheterization (nearest monitoring sites), exposure to NO<sub>2</sub> or traffic-related pollution indicators and mortality. However, increases in the sum of the length of main roads within the 500m-buffer zone were associated with more severe PAH at

baseline, increasing the likelihood of being diagnosed within the ESC/ERS high-risk clinical prediction category (**Figure 2**).

Baseline hemodynamic severity correlated with distance to main road and the length of road surrounding the residential addresses for both the crude (**Figure S5**) and the further-adjusted (**Figure 3**) models. The strongest evidence for this association was found between pulmonary vascular resistance and distance to road indicator, with ratio of 0.95 (95%CI 0.93-0.98,  $p=0.001$ ) for a 200m increase, with similar results observed for the crude (0.96, 95%CI 0.93-0.99,  $p=0.006$ ) and primary (0.96, 95%CI 0.94-0.99,  $p=0.012$ ) models. Surprisingly, increased exposure to PM<sub>2.5</sub> (2010 map) was associated with a lower pulmonary vascular resistance (**Figure 4**). No consistent association was found between pulmonary haemodynamics and NO<sub>2</sub> (**Figure S7-8**).

## DISCUSSION

The main findings of this multicentre UK PAH Cohort are that direct and indirect measures of exposure to air pollution were associated with more severe disease at baseline and poorer transplant-free survival amongst patients with idiopathic and heritable PAH. While estimated exposure to PM<sub>2.5</sub> was independently associated with the risk of death or transplantation, traffic air pollution indicators at the time of diagnosis correlated with the ESC/ERS risk stratification and baseline hemodynamic severity. These associations should however be interpreted with caution given the limited sample size and the indirect measures used as proxy for air pollution exposure.

Increased air pollution exposure has been documented as an independent risk factor for mortality and hospitalisations in the general population [2, 3], and in several chronic health conditions [4-9, 15]. Evidence suggests that these effects are stronger for cardiovascular mortality than for other causes of mortality [25, 26]. Moreover, PM<sub>2.5</sub> emissions have been consistently found to have more detrimental health effects compared to gaseous emissions (e.g. NO<sub>2</sub>), with cardiovascular events exhibiting the strongest association with exposure to PM<sub>2.5</sub> [13, 15]. Particles generated by diesel exhaust are

considered particularly toxic since they carry a much larger fraction of toxic compounds [10, 27]. Particulate matter is a mixture of solid particles and liquid droplets suspended in the air. Contrary to larger particles, PM<sub>2.5</sub> have a diameter that enables particles to penetrate deep into the lungs and permeate the alveolar-capillary epithelium [25]. The size of particles is thus directly linked to their impact to influence human health. Numerous biological mechanisms have been hypothesized to explain the association between PM<sub>2.5</sub> exposure and cardiovascular diseases. These include the possible direct actions of pollutants reaching the lung and the systemic circulation contributing to oxidative stress, autonomic imbalance [10, 14], epigenetic dysregulation [28], immunomodulation [29] and vascular inflammation [30].

In the Multi-Ethnic Study of Atherosclerosis and Air Pollution (MESA Air) long-term ambient PM<sub>2.5</sub> concentrations were shown to be associated with the progression of intima–media thickness on ultrasound examination [31] and that ambient air pollution was associated with a greater peripheral total pulmonary vascular volume [32]. Interestingly, experimental studies have documented that prolonged exposure to particulate and soluble antigens induces changes in pulmonary arteries [16] and that diesel exhaust exposure induces pulmonary hypertension in mice [17]. Moreover, an echocardiographic study on 81 children living in Mexico also found that outdoor exposure levels of PM<sub>2.5</sub> were associated with increased pulmonary arterial pressure and with elevated plasma endothelin-1 levels [33], while a chamber study on 18 healthy volunteers showed that diesel exhaust exposure increases pulmonary vascular resistance at high cardiac output [34]. In view of the small numbers of subjects involved in these studies and the limited preclinical experiments on the pulmonary circulation physiology in response to pollutants exposure, the mechanisms underlying the association between indirect measures of air traffic pollution and hemodynamic severity at baseline in the present study remain elusive. Nonetheless, we can speculate that air pollution could contribute to enhanced inflammation, oxidative stress, and endothelial dysfunction that have been involved in PAH development and progression.

Contrary to the scant evidence on the association between pulmonary vascular dysfunction and air pollution in humans, multiple studies confirmed the association between air pollution exposure and heart structure and function. The Multi-Ethnic Study of Atherosclerosis (MESA) confirmed that people living in proximity to roadways had greater left ventricular mass [35]. More recently, the MESA study also confirmed that exposure to higher concentrations of NO<sub>2</sub>[36], PM<sub>2.5</sub> [37] and PM<sub>2.5-10</sub> [19] was associated with greater RV mass and RV end-diastolic volume. The association between chronic past exposure to traffic-related pollutants and RV and left ventricular mass and function were also recently replicated within the UK Biobank Population Imaging Study [18]. Even acute increases in PM<sub>2.5</sub> exposure were recently shown to induce endothelial dysfunction and influence cardiac function [38]. Since the prognosis of PAH is mostly influenced by the consequences of the increased afterload on the right heart function, the present association between air pollution exposure and PAH outcomes is therefore not unexpected.

To the best of our knowledge, this is the first study that aimed at investigating the association between traffic-related and air pollution exposure and hemodynamic severity and outcomes in PAH. We found strong evidence for the association between pulmonary vascular resistance and distance to the nearest main road. Importantly, despite being exposed at PM<sub>2.5</sub> concentrations below current air quality standards, PM<sub>2.5</sub> exposure was associated with increases in the relative risk of mortality. Moreover, this association was robust using different model specifications. Whether this finding is related to influences of pollutant exposure on RV function, PAH progression, comorbidities or a coincidental finding remains to be investigated. It is noteworthy that the magnitude of this association was higher than reported in most observational studies from the general population in which relative increases in mortality were most commonly in the range of 4-15% per 10µg/m<sup>3</sup> of PM<sub>2.5</sub> concentrations [2, 3]. Subgroups of the general population can be particularly susceptible though to air pollution. In a group of postmenopausal women a 76% increase in the risk of death from cardiovascular disease was observed per 10µg/m<sup>3</sup> of PM<sub>2.5</sub> concentrations [39]. Although the present study's estimate was imprecise, with wide confidence interval, it remains nonetheless consistent with

the increased risk of death observed in more vulnerable populations [39-41] as with disease-specific mortality [3]. The present results are observed for air pollution levels that meet the current air quality standards, which is also the case with other studies in USA and Europe [2, 42]. These observations thus support current efforts to improve outdoor air quality and meet the WHO reference level for the PM<sub>2.5</sub> annual mean concentrations (10 µg/m<sup>3</sup>). Intriguingly, previous studies suggested that air pollution exposure correlates not only with pulmonary fibrosis severity, but also its incidence [9]. While low disease awareness was proposed to explain the higher prevalence of PAH in urban regions of France in previous registry data [43], the impact of air pollution cannot be fully excluded.

The present study has several limitations that should be acknowledged. Since evidence suggests that mean PM<sub>2.5</sub> and NO<sub>2</sub> concentrations minimally fluctuate over the years [15], we estimated individual exposure to air pollution using the 2010 annual average air pollution maps of ambient PM<sub>2.5</sub> and NO<sub>2</sub> concentrations. We also linked each study participant's residence to the location of the monitoring stations. However, the use of the nearest monitor represents a coarse exposure approach as it does not account for spatial heterogeneity due to land use (i.e. roads) or prevailing winds. Thus, 50km can capture large rural areas as well as urban areas. Moreover, people who live in industrialized countries spend around 90% of their time indoors [44]. Similarly, even if PAH patients are expected to spend more time at home than the general population, many people may spend much of their time at their workplace, which may be far from their home. In addition, smoking and individual level deprivation data only partly captured indoor air quality. Thus, available maps are likely to have led to exposure misclassification for many patients of the present cohort. Intriguingly, enhanced PM<sub>2.5</sub> exposure using 2010 air pollution maps was associated with poorer survival but lower pulmonary vascular resistance at baseline. The mechanisms underlying these associations remain elusive. It is noteworthy, however, that such discrepancy between specific pollutant exposures and outcomes has been repeatedly observed in other conditions, including chronic obstructive pulmonary disease [4, 5] and pulmonary fibrosis [7-9]. Additionally, in order to minimize exposure misclassification, a significant proportion of patients were ineligible as they did not maintain the same address since diagnosis. Since moving may

not occur randomly, this may have led to selection bias, questioning the external validity of our findings. Moreover, the traffic-related air pollutant exposure has been associated with outcomes in small cohorts of patients with specific cardiorespiratory diseases [7, 8]. However, the present cohort had a smaller sample size than most observational studies evaluating the association between traffic road or air pollutant exposure and outcomes [2, 42]. Whether the observed associations result from sampling error or reflect the vulnerable nature of patients with PAH remains to be determined. The potential for a false positive finding also cannot be excluded, since multiple comparisons increase the possibility for type 1 error in statistical analyses. Finally, as PM<sub>2.5</sub> is a heterogeneous mixture of solid and liquid particles emitted from a variety of sources and traffic-related air pollution indicators are indirect measures of air pollution, the available data precluded the estimation of the specific constituents and sources of the particles. Given these limitations, the current data should be interpreted with caution until larger studies are available.

In conclusion, traffic-related air pollution and PM<sub>2.5</sub> exposure may be associated with disease severity and outcomes in PAH. However, our findings require validation and replication in a larger cohort to increase confidence in the reliability of these estimates. The present study thus encourages further investigations on air pollution exposure as a potentially removable risk factor influencing PAH incidence, severity and outcomes.

## REFERENCES

1. Mathers C, Stevens G, M M. Global Health Risks: Mortality and burden of disease attributable to selected major risks. 2009 December 20 2017 [cited June 27 2018]; Available from: [http://www.who.int/healthinfo/global\\_burden\\_disease/GlobalHealthRisks\\_report\\_full.pdf](http://www.who.int/healthinfo/global_burden_disease/GlobalHealthRisks_report_full.pdf)
2. Di Q, Wang Y, Zanobetti A, Wang Y, Koutrakis P, Choirat C, Dominici F, Schwartz JD. Air Pollution and Mortality in the Medicare Population. *N Engl J Med* 2017; 376(26): 2513-2522.
3. Beelen R, Raaschou-Nielsen O, Stafoggia M, Andersen ZJ, Weinmayr G, Hoffmann B, Wolf K, Samoli E, Fischer P, Nieuwenhuijsen M, Vineis P, Xun WW, Katsouyanni K, Dimakopoulou K, Oudin A, Forsberg B, Modig L, Havulinna AS, Lanki T, Turunen A, Oftedal B, Nystad W, Nafstad P, De Faire U, Pedersen NL, Ostenson CG, Fratiglioni L, Penell J, Korek M, Pershagen G, Eriksen KT, Overvad K, Ellermann T, Eeftens M, Peeters PH, Meliefste K, Wang M, Bueno-de-Mesquita B, Sugiri D, Kramer U, Heinrich J, de Hoogh K, Key T, Peters A, Hampel R, Concin H, Nagel G, Ineichen A, Schaffner E, Probst-Hensch N, Kunzli N, Schindler C, Schikowski T, Adam M, Phuleria H, Vilier A, Clavel-Chapelon F, Declercq C, Grioni S, Krogh V, Tsai MY, Ricceri F, Sacerdote C, Galassi C, Migliore E, Ranzi A, Cesaroni G, Badaloni C, Forastiere F, Tamayo I, Amiano P, Dorronsoro M, Katsoulis M, Trichopoulou A, Brunekreef B, Hoek G. Effects of long-term exposure to air pollution on natural-cause mortality: an analysis of 22 European cohorts within the multicentre ESCAPE project. *Lancet* 2014; 383(9919): 785-795.
4. DeVries R, Kriebel D, Sama S. Outdoor Air Pollution and COPD-Related Emergency Department Visits, Hospital Admissions, and Mortality: A Meta-Analysis. *COPD* 2017; 14(1): 113-121.
5. Gan WQ, FitzGerald JM, Carlsten C, Sadatsafavi M, Brauer M. Associations of ambient air pollution with chronic obstructive pulmonary disease hospitalization and mortality. *Am J Respir Crit Care Med* 2013; 187(7): 721-727.
6. Johannson KA, Vittinghoff E, Lee K, Balmes JR, Ji W, Kaplan GG, Kim DS, Collard HR. Acute exacerbation of idiopathic pulmonary fibrosis associated with air pollution exposure. *Eur Respir J* 2014; 43(4): 1124-1131.
7. Johannson KA, Vittinghoff E, Morisset J, Wolters PJ, Noth EM, Balmes JR, Collard HR. Air Pollution Exposure Is Associated With Lower Lung Function, but Not Changes in Lung Function, in Patients With Idiopathic Pulmonary Fibrosis. *Chest* 2018 (in press).
8. Sese L, Nunes H, Cottin V, Sanyal S, Didier M, Carton Z, Israel-Biet D, Crestani B, Cadranet J, Wallaert B, Tazi A, Maitre B, Prevot G, Marchand-Adam S, Guillot-Dudoret S, Nardi A, Dury S, Giraud V, Gondouin A, Juvin K, Borie R, Wislez M, Valeyre D, Annesi-Maesano I. Role of atmospheric pollution on the natural history of idiopathic pulmonary fibrosis. *Thorax* 2018; 73(2): 145-150.
9. Conti S, Harari S, Caminati A, Zanobetti A, Schwartz JD, Bertazzi PA, Cesana G, Madotto F. The association between air pollution and the incidence of idiopathic pulmonary fibrosis in Northern Italy. *Eur Respir J* 2018 (in press).
10. Newby DE, Mannucci PM, Tell GS, Baccarelli AA, Brook RD, Donaldson K, Forastiere F, Franchini M, Franco OH, Graham I, Hoek G, Hoffmann B, Hoylaerts MF, Künzli N, Mills N, Pekkanen J, Peters A, Piepoli MF, Rajagopalan S, Storey RF. Expert position paper on air pollution and cardiovascular disease. *European Heart Journal* 2015; 36(2): 83-93.
11. Cesaroni G, Forastiere F, Stafoggia M, Andersen ZJ, Badaloni C, Beelen R, Caracciolo B, de Faire U, Erbel R, Eriksen KT, Fratiglioni L, Galassi C, Hampel R, Heier M, Hennig F, Hilding A, Hoffmann B, Houthuijs D, Jockel KH, Korek M, Lanki T, Leander K, Magnusson PK, Migliore E, Ostenson CG, Overvad K, Pedersen NL, J JP, Penell J, Pershagen G, Pyko A, Raaschou-Nielsen O, Ranzi A, Ricceri F, Sacerdote C, Salomaa V, Swart W, Turunen AW, Vineis P, Weinmayr G, Wolf K, de Hoogh K, Hoek G, Brunekreef B, Peters A. Long term exposure to ambient air pollution and incidence of acute coronary events: prospective cohort study and meta-analysis in 11 European cohorts from the ESCAPE Project. *BMJ* 2014; 348: f7412.
12. Cohen AJ, Brauer M, Burnett R, Anderson HR, Frostad J, Estep K, Balakrishnan K, Brunekreef B, Dandona L, Dandona R, Feigin V, Freedman G, Hubbell B, Jobling A, Kan H, Knibbs L, Liu Y, Martin R,



- Morawska L, Pope CA, 3rd, Shin H, Straif K, Shaddick G, Thomas M, van Dingenen R, van Donkelaar A, Vos T, Murray CJL, Forouzanfar MH. Estimates and 25-year trends of the global burden of disease attributable to ambient air pollution: an analysis of data from the Global Burden of Diseases Study 2015. *Lancet* 2017; 389(10082): 1907-1918.
13. Shah AS, Langrish JP, Nair H, McAllister DA, Hunter AL, Donaldson K, Newby DE, Mills NL. Global association of air pollution and heart failure: a systematic review and meta-analysis. *Lancet* 2013; 382(9897): 1039-1048.
  14. Brook RD, Rajagopalan S, Pope CA, 3rd, Brook JR, Bhatnagar A, Diez-Roux AV, Holguin F, Hong Y, Luepker RV, Mittleman MA, Peters A, Siscovick D, Smith SC, Jr., Whitsel L, Kaufman JD. Particulate matter air pollution and cardiovascular disease: An update to the scientific statement from the American Heart Association. *Circulation* 2010; 121(21): 2331-2378.
  15. Kim H, Kim J, Kim S, Kang SH, Kim HJ, Kim H, Heo J, Yi SM, Kim K, Youn TJ, Chae IH. Cardiovascular Effects of Long-Term Exposure to Air Pollution: A Population-Based Study With 900 845 Person-Years of Follow-up. *Journal of the American Heart Association* 2017; 6(11).
  16. Park SH, Chen WC, Durmus N, Bleck B, Reibman J, Riemekasten G, Grunig G. The Effects of Antigen-Specific IgG1 Antibody for the Pulmonary-Hypertension-Phenotype and B Cells for Inflammation in Mice Exposed to Antigen and Fine Particles from Air Pollution. *PLoS one* 2015; 10(6): e0129910.
  17. Liu J, Ye X, Ji D, Zhou X, Qiu C, Liu W, Yu L. Diesel exhaust inhalation exposure induces pulmonary arterial hypertension in mice. *Environmental pollution (Barking, Essex : 1987)* 2018; 237: 747-755.
  18. Aung N, Sanghvi MM, Zemrak F, Lee AM, Cooper JA, Paiva JM, Thomson RJ, Fung K, Khanji MY, Lukaschuk E, Carapella V, Kim YJ, Munroe PB, Piechnik SK, Neubauer S, Petersen SE. Association Between Ambient Air Pollution and Cardiac Morpho-Functional Phenotypes. *Circulation* 2018; 138(20): 2175-2186.
  19. D'Souza JC, Kawut SM, Elkayam LR, Sheppard L, Thorne PS, Jacobs DR, Jr., Bluemke DA, Lima JAC, Kaufman JD, Larson TV, Adar SD. Ambient Coarse Particulate Matter and the Right Ventricle: The Multi-Ethnic Study of Atherosclerosis. *Environmental health perspectives* 2017; 125(7): 077019.
  20. Galie N, Humbert M, Vachiery JL, Gibbs S, Lang I, Torbicki A, Simonneau G, Peacock A, Vonk Noordegraaf A, Beghetti M, Ghofrani A, Gomez Sanchez MA, Hansmann G, Klepetko W, Lancellotti P, Matucci M, McDonagh T, Pierard LA, Trindade PT, Zompatori M, Hoeper M. 2015 ESC/ERS Guidelines for the diagnosis and treatment of pulmonary hypertension: The Joint Task Force for the Diagnosis and Treatment of Pulmonary Hypertension of the European Society of Cardiology (ESC) and the European Respiratory Society (ERS): Endorsed by: Association for European Paediatric and Congenital Cardiology (AEPC), International Society for Heart and Lung Transplantation (ISHLT). *Eur Respir J* 2015; 46(4): 903-975.
  21. Ho HC, Wong MS, Yang L, Chan TC, Bilal M. Influences of socioeconomic vulnerability and intra-urban air pollution exposure on short-term mortality during extreme dust events. *Environmental pollution (Barking, Essex : 1987)* 2018; 235: 155-162.
  22. Hagenaars A, de Vos K, Zaidi MA. Poverty Statistics in the Late 1980s: Research Based on Micro-data, Luxembourg, 1994.
  23. de Hoogh K, Gulliver J, Donkelaar Av, Martin RV, Marshall JD, Bechle MJ, Cesaroni G, Pradas MC, Dedele A, Eeftens M, Forsberg B, Galassi C, Heinrich J, Hoffmann B, Jacquemin B, Katsouyanni K, Korek M, Künzli N, Lindley SJ, Lepeule J, Meleux F, de Nazelle A, Nieuwenhuijsen M, Nystad W, Raaschou-Nielsen O, Peters A, Peuch V-H, Rouil L, Udvardy O, Slama R, Stempfelet M, Stephanou EG, Tsai MY, Yli-Tuomi T, Weinmayr G, Brunekreef B, Vienneau D, Hoek G. Development of West-European PM2.5 and NO2 land use regression models incorporating satellite-derived and chemical transport modelling data. *Environmental research* 2016; 151: 1-10.
  24. Hoeper MM, Kramer T, Pan Z, Eichstaedt CA, Spiesshoefer J, Benjamin N, Olsson KM, Meyer K, Vizza CD, Vonk-Noordegraaf A, Distler O, Opitz C, Gibbs JSR, Delcroix M, Ghofrani HA, Huscher D, Pittrow D, Rosenkranz S, Grunig E. Mortality in pulmonary arterial hypertension: prediction by the

2015 European pulmonary hypertension guidelines risk stratification model. *Eur Respir J* 2017 (in press).

25. Pope CA, 3rd, Burnett RT, Thun MJ, Calle EE, Krewski D, Ito K, Thurston GD. Lung cancer, cardiopulmonary mortality, and long-term exposure to fine particulate air pollution. *JAMA* 2002; 287(9): 1132-1141.

26. Dockery DW, Stone PH. Cardiovascular risks from fine particulate air pollution. *N Engl J Med* 2007; 356(5): 511-513.

27. Sydbom A, Blomberg A, Parnia S, Stenfors N, Sandstrom T, Dahlen SE. Health effects of diesel exhaust emissions. *Eur Respir J* 2001; 17(4): 733-746.

28. Barouki R, Melen E, Herceg Z, Beckers J, Chen J, Karagas M, Puga A, Xia Y, Chadwick L, Yan W, Audouze K, Slama R, Heindel J, Grandjean P, Kawamoto T, Nohara K. Epigenetics as a mechanism linking developmental exposures to long-term toxicity. *Environment international* 2018; 114: 77-86.

29. Wei T, Tang M. Biological effects of airborne fine particulate matter (PM<sub>2.5</sub>) exposure on pulmonary immune system. *Environmental toxicology and pharmacology* 2018; 60: 195-201.

30. Nemmar A, Hoylaerts MF, Nemery B. Effects of particulate air pollution on hemostasis. *Clinics in occupational and environmental medicine* 2006; 5(4): 865-881.

31. Adar SD, Sheppard L, Vedal S, Polak JF, Sampson PD, Diez Roux AV, Budoff M, Jacobs DR, Jr., Barr RG, Watson K, Kaufman JD. Fine particulate air pollution and the progression of carotid intima-medial thickness: a prospective cohort study from the multi-ethnic study of atherosclerosis and air pollution. *PLoS Med* 2013; 10(4): e1001430.

32. Aaron CP, Hoffman EA, KD HS. Ambient Air Pollution and Pulmonary Vascular Structure: The MESA Lung and Air Pollution Studies. *Am J Respir Crit Care Med* 2017;195:A1746 2017.

33. Calderon-Garciduenas L, Vincent R, Mora-Tiscareno A, Franco-Lira M, Henriquez-Roldan C, Barragan-Mejia G, Garrido-Garcia L, Camacho-Reyes L, Valencia-Salazar G, Paredes R, Romero L, Osnaya H, Villarreal-Calderon R, Torres-Jardon R, Hazucha MJ, Reed W. Elevated plasma endothelin-1 and pulmonary arterial pressure in children exposed to air pollution. *Environmental health perspectives* 2007; 115(8): 1248-1253.

34. Wauters A, Vicenzi M, De Becker B, Riga J-P, Esmaeilzadeh F, Faoro V, Vachiéry J-L, van de Borne P, Argacha J-F. At high cardiac output, diesel exhaust exposure increases pulmonary vascular resistance and decreases distensibility of pulmonary resistive vessels. *American Journal of Physiology - Heart and Circulatory Physiology* 2015; 309(12): H2137-H2144.

35. Van Hee VC, Adar SD, Szpiro AA, Barr RG, Bluemke DA, Diez Roux AV, Gill EA, Sheppard L, Kaufman JD. Exposure to traffic and left ventricular mass and function: the Multi-Ethnic Study of Atherosclerosis. *American journal of respiratory and critical care medicine* 2009; 179(9): 827-834.

36. Leary PJ, Kaufman JD, Barr RG, Bluemke DA, Curl CL, Hough CL, Lima JA, Szpiro AA, Van Hee VC, Kawut SM. Traffic-related Air Pollution and the Right Ventricle. The Multi-ethnic Study of Atherosclerosis. *American journal of respiratory and critical care medicine* 2014; 189(9): 1093-1100.

37. Aaron CP, Chervona Y, Kawut SM, Diez Roux AV, Shen M, Bluemke DA, Van Hee VC, Kaufman JD, Barr RG. Particulate Matter Exposure and Cardiopulmonary Differences in the Multi-Ethnic Study of Atherosclerosis. *Environmental health perspectives* 2016; 124(8): 1166-1173.

38. Vieira JL, Guimaraes GV, de Andre PA, Cruz FD, Saldiva PH, Bocchi EA. Respiratory Filter Reduces the Cardiovascular Effects Associated With Diesel Exhaust Exposure: A Randomized, Prospective, Double-Blind, Controlled Study of Heart Failure: The FILTER-HF Trial. *JACC Heart Fail* 2016; 4(1): 55-64.

39. Miller KA, Siscovick DS, Sheppard L, Shepherd K, Sullivan JH, Anderson GL, Kaufman JD. Long-Term Exposure to Air Pollution and Incidence of Cardiovascular Events in Women. *New England Journal of Medicine* 2007; 356(5): 447-458.

40. Di Q, Dai L, Wang Y, Zanobetti A, Choirat C, Schwartz JD, Dominici F. Association of Short-term Exposure to Air Pollution With Mortality in Older Adults. *Jama* 2017; 318(24): 2446-2456.

41. Ruttens D, Verleden SE, Bijnen EM, Winckelmans E, Gottlieb J, Warnecke G, Meloni F, Morosini M, Van Der Bij W, Verschuuren EA, Sommerwerck U, Weinreich G, Kamler M, Roman A,

Gomez-Olles S, Berastegui C, Benden C, Holm AM, Iversen M, Schultz HH, Luijk B, Oudijk E-J, Kwakkel-van Erp JM, Jaksch P, Klepetko W, Kneidinger N, Neurohr C, Corris P, Fisher AJ, Lordan J, Meachery G, Piloni D, Vandermeulen E, Bellon H, Hoffmann B, Vienneau D, Hoek G, de Hoogh K, Nemery B, Verleden GM, Vos R, Nawrot TS, Vanaudenaerde BM. An association of particulate air pollution and traffic exposure with mortality after lung transplantation in Europe. *European Respiratory Journal* 2017: 49(1).

42. Cromar KR, Gladson LA, Ghazipura M, Ewart G. Estimated Excess Morbidity and Mortality Associated with Air Pollution above American Thoracic Society-recommended Standards, 2013-2015. American Thoracic Society and Marron Institute Report. *Ann Am Thorac Soc* 2018; 15(5): 542-551.

43. Humbert M, Sitbon O, Chaouat A, Bertocchi M, Habib G, Gressin V, Yaici A, Weitzenblum E, Cordier JF, Chabot F, Dromer C, Pison C, Reynaud-Gaubert M, Haloun A, Laurent M, Hachulla E, Simonneau G. Pulmonary arterial hypertension in France: results from a national registry. *Am J Respir Crit Care Med* 2006; 173(9): 1023-1030.

44. Lunden MM, Thatcher TL, Hering SV, Brown NJ. Use of time- and chemically resolved particulate data to characterize the infiltration of outdoor PM<sub>2.5</sub> into a residence in the San Joaquin Valley. *Environmental science & technology* 2003; 37(20): 4724-4732.

**TABLE 1. CHARACTERISTICS OF THE STUDY PARTICIPANTS AT DIAGNOSIS**

	<b>N=301</b>
<b>Age at Diagnosis, years</b>	51 ± 15
<b>Female sex</b>	199 (66)
<b>PAH subgroup</b>	
Idiopathic	261 (87)
Heritable	40 (13)
<b>WHO functional class</b>	
I-II	44 (15)
III	219 (73)
IV	38 (13)
<b>Body Mass Index (BMI), kg/m<sup>2</sup></b>	30 ± 7
<b>Presence of emphysema on CT scan**</b>	7 (2)
<b>Pulmonary hemodynamics</b>	
Right Atrial Pressure (RAP), mmHg	9 [7]
Mean pulmonary arterial pressure (PAP), mmHg	53 [18]
Cardiac Index (CI), L/min per m <sup>2</sup>	2 [1]
Cardiac Output (CO), L/min	4 [2]
Pulmonary Vascular Resistance (PVR), Wood units	11 [8]
Pulmonary capillary wedge pressure (PCWP), mmHg	9 ± 3
Mixed venous oxygen saturation (SvO <sub>2</sub> ), %	64 ± 8
<b>Six-minute walk distance (SMWT), meters</b>	310 [203]
<b>Pulmonary function tests</b>	
Forced expiratory volume in 1 sec (FEV <sub>1</sub> ), %predicted	84 ± 19
Transfer coefficient (KCO), %predicted	74 ± 24
<b>Area-level Deprivation</b>	
q1 (most deprived)	95 (32)
q2	68 (23)
q3	61 (21)
q4	52 (18)
q5	19 (6)
q6 missing category	6 (2)
<b>Household Income</b>	
q1	41 (14)
q2	40 (13)
q3	40 (13)
q4	50 (17)
q5 (most deprived)	28 (9)
q6 missing category	102 (34)
<b>Education</b>	
Primary and Low-Secondary	62 (21)
Upper and Post-Secondary	124 (41)
Tertiary	90 (30)
Missing category	25 (8)
<b>Smoking at diagnosis, n (%)</b>	

Current smoker	22 (7)
Former smoker	92 (31)
Never smoker	46 (15)
Missing category	141 (47)
<b>Ethnicity</b>	
British	258 (86)
Other White	11 (4)
Other	31 (10)
Missing	1(0.3)

Data are presented as mean±standard deviation, n(%) or median [interquartile range].

\* The percentages may not add up to 100% due to rounding.

\*\* The presence of emphysema was based on baseline chest computed tomography at the time of diagnosis.

†Data were complete for all variables except where indicated by a missing category and further missing data on the continuous variables: BMI 9; RAP, CI 16; PAP 5; CO 10; PVR, PCWP 35; SvO2 27; SMWT 92; FEV1 23; and KCO 46.

PAH: pulmonary arterial hypertension; WHO: World Health Organization.

**TABLE 2. SUMMARY OF AIR POLLUTION INDICATORS**

<b>Traffic-related air pollution</b>	
Distance to road (km)	0.4 [0.5]
Road length (km) - within 1km buffer zone	2.1 [2.1]
Road length (km) - within 500m buffer zone	0.8 [1]
<b>Ambient Air Pollution</b>	
<i>Mean annual concentrations for PM<sub>2.5</sub> and NO<sub>2</sub></i>	
Particulate matter 2.5, µg/m <sup>3</sup>	13.7 [2.8]
Nitrogen Dioxide, µg/m <sup>3</sup>	26 [10.1]
<i>Nearest monitor (&lt;50km) approach for PM<sub>2.5</sub> and NO<sub>2</sub> at the time of baseline right heart catheterization</i>	
Particulate matter 2.5, µg/m <sup>3</sup>	
Lag 0 days *	9.4 [7.9]
Lag 3 days *	9.3 [7.5]
Lag 7 days *	10.2 [7.1]
Lag 14 days *	10.6 [8]
Nitrogen Dioxide, µg/m <sup>3</sup>	
Lag 0 days *	29.3 [30.2]
Lag 3 days *	27.3 [28]
Lag 7 days *	28.3 [30.2]
Lag 14 days *	29.2 [27.4]

Data are presented as median [interquartile range].

\*Cumulative air pollution concentrations at lags 0, 3, 7 and 14 days preceding the date of diagnosis.

**TABLE 3. COX PROPORTIONAL REGRESSION ANALYSIS FOR THE ASSOCIATION BETWEEN ANNUAL (2010) MEAN CONCENTRATIONS OF PARTICULATE MATTER 2.5 EXPOSURE AND RISK OF MORTALITY OR TRANSPLANTATION.**

Complete Dataset for survival analysis (N=268, 40 events) †		
	Hazard Ratio (95% CI)	P value
<b>Models</b>		
Crude model*	2.68 (1.11-6.47)	0.028
Primary adjusted model **	2.74 (1.06-7.05)	0.037
Further adjusted model ***	4.38 (1.44-13.36)	0.009

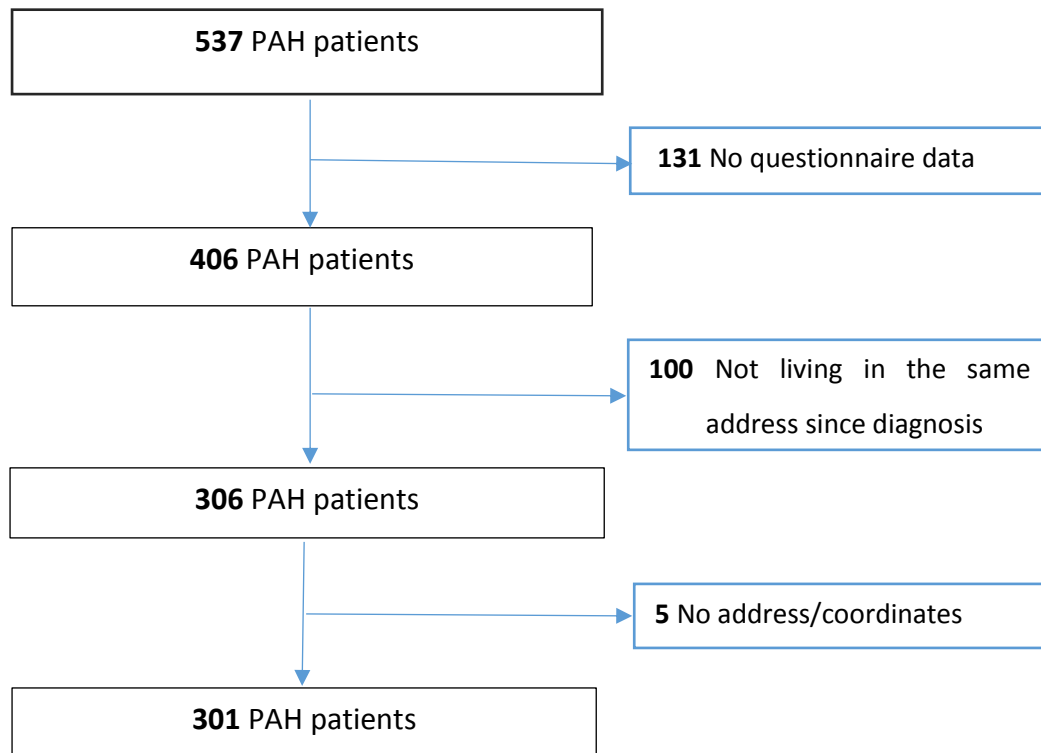
Hazard ratios per 3µg/m<sup>3</sup> increase of PM2.5 exposure.

\* Model is stratified by centre.

\*\* Model adjusted for age, gender, World Health Organisation functional class, stratified by centre.

\*\*\* Model adjusted for centre, age, gender, deprivation, income, education, smoking, incident/prevalent, emphysema, European Respiratory Society/European Society of Cardiology risk category and bone morphogenetic protein receptor type II gene mutation, stratified by centre.

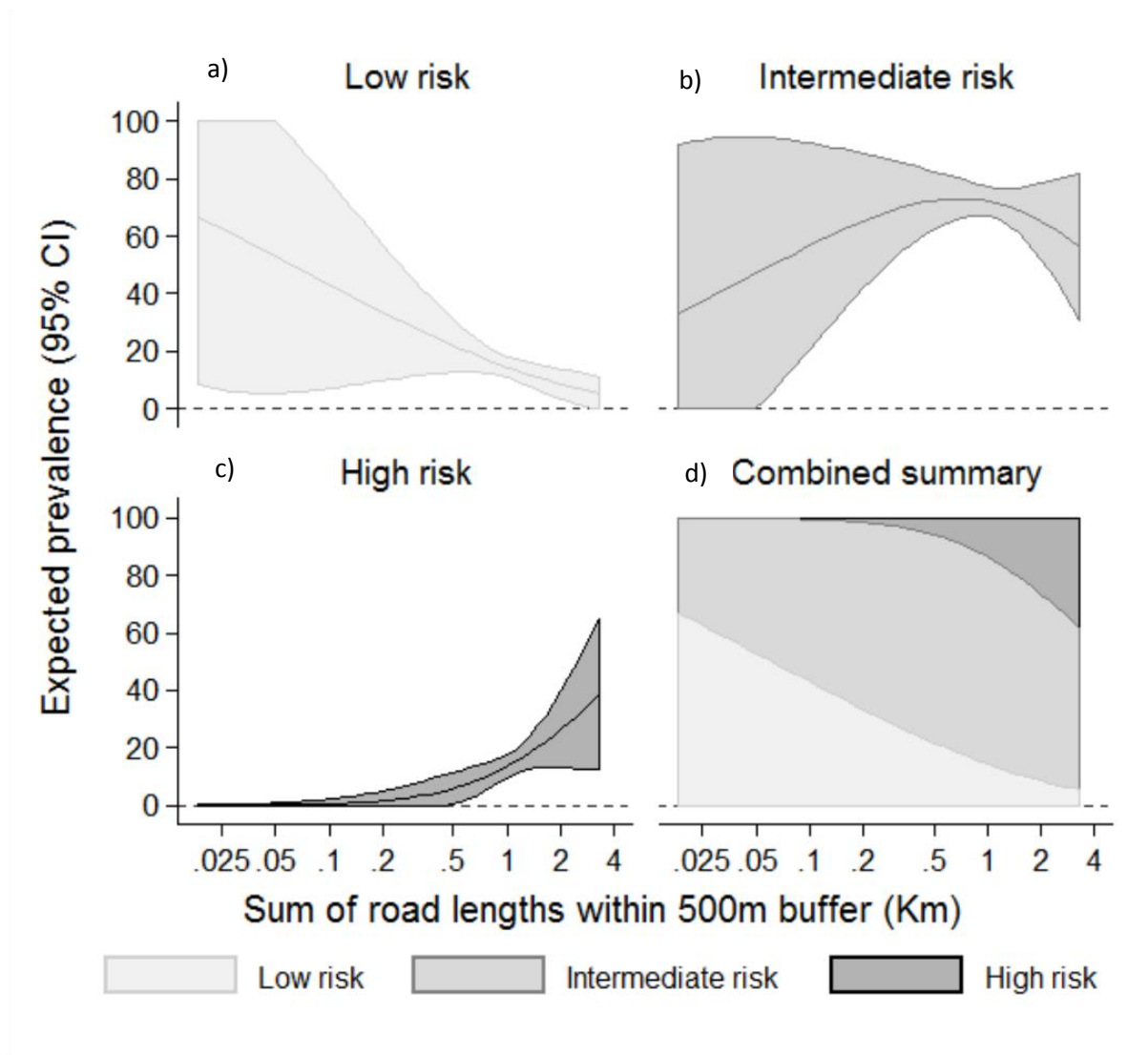
†Complete dataset with no missing data for the variables we adjusted for in the main (survival analysis) models (N=286). Due to exclusion criteria related to survival analysis [i.e. prevalent patients who were diagnosed more than 10 years before study entry (n=16) and cases who left before the study initiation (n=2)] the final models comprised of 268 (40 deaths) cases.



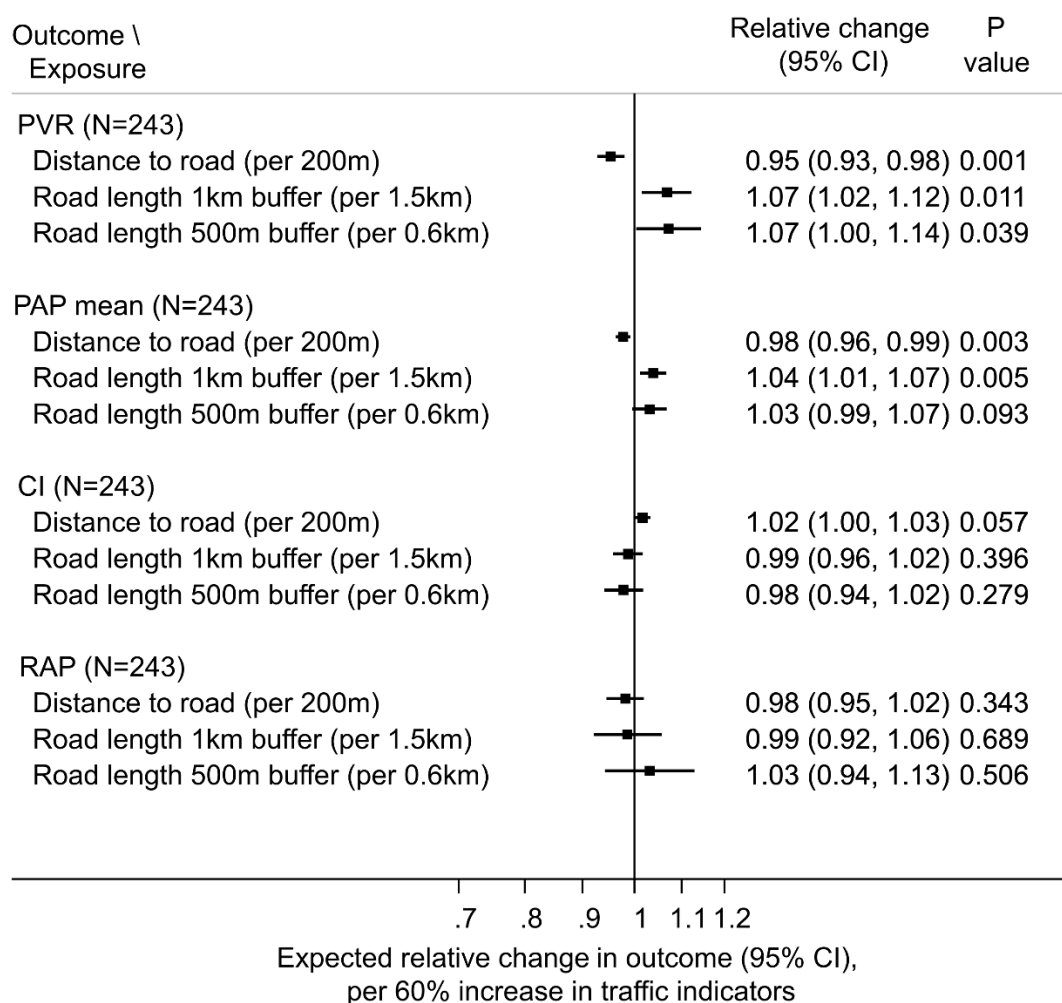
**FIGURE 1. FLOW CHART OF THE PATIENT SELECTION**

During the recruitment period (from January 1, 2014 to February 28, 2018), 138 incident and 163 prevalent cases were recruited by the UK PAH Cohort study.





**FIGURE 2. MULTINOMIAL LOGISTIC REGRESSION ESTIMATING THE ASSOCIATIONS BETWEEN PULMONARY ARTERIAL HYPERTENSION RISK PROFILE AND LENGTH OF MAIN ROADS WITHIN THE 500M-BUFFER ZONE.** First three panels (a, b, c) show the expected risk (and 95%CI) of being diagnosed in low, intermediate and high-risk profile according to the abbreviated ESC/ERS risk score. An increase in length of road was associated with increased probability of having a high-risk score at baseline. Last panel (d) summarises the association between the sum of road lengths within the 500m-buffer zone and the risk of being within the low, medium and high-risk ESC/ERS risk category at diagnosis.

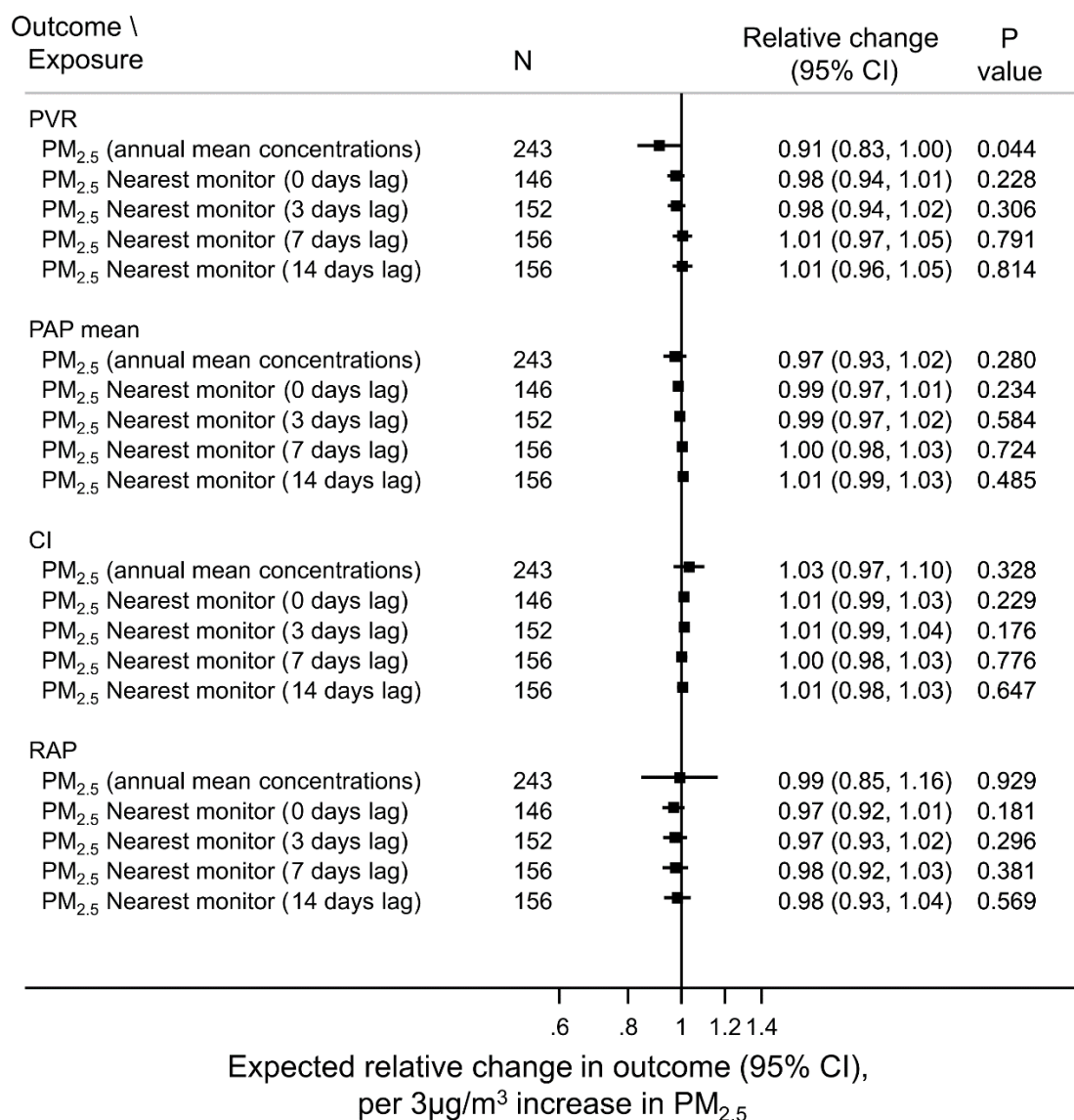


**FIGURE 3. MULTIVARIABLE LINEAR REGRESSION ESTIMATING THE ASSOCIATIONS BETWEEN PULMONARY HAEMODYNAMICS AND TRAFFIC AIR POLLUTION**

The fully adjusted models was adjusted for: age, sex, functional class, smoking status at diagnosis, season, deprivation, income, education, body mass index, prevalent/incident cases, presence of Bmpr2 gene mutation and centre. Complete-case dataset with no missing data for the haemodynamics and the variables we adjusted for (N=243).

Both exposure and haemodynamic variables were log-transformed. Therefore, the relative changes represent percentage change of the haemodynamics for a 60% increase in the traffic exposure indicators. A 60% increase in the geometric mean of traffic exposure indicators approximates to 200m increases for distance to road, 0.6km increases for road length (500m buffer zone) and 1.5km increases for road length (1km buffer zone).

N: number of observations in each model, PVR: pulmonary vascular resistance (Wood Units), PAP mean: mean pulmonary arterial pressure, mm Hg (SD), CI: cardiac index, L/min per m<sup>2</sup>, RAP: right atrial pressure, mm Hg, Bmpr2: bone morphogenetic protein receptor type II.



**Figure 4. Multivariable Linear Regression Estimating the Associations between Pulmonary Haemodynamics and Particulate Matter  $\leq 2.5\mu\text{m}$  (PM<sub>2.5</sub>) concentrations.**

The model was fully adjusted for age, sex, functional class, smoking status at diagnosis, season, deprivation, income, education, body mass index, prevalent/incident cases, presence of BMRP2 gene mutation and centre.

Only haemodynamic variables were log-transformed. Therefore, the relative changes represent percentage change in haemodynamics per 3µg/m<sup>3</sup> (interquartile range rounded to the nearest integer) increase in PM<sub>2.5</sub> exposure.

N: number of observations in each model, PVR: pulmonary vascular resistance (Wood Units), PAP mean: mean pulmonary arterial pressure, mm Hg (SD), CI: cardiac index, L/min per m<sup>2</sup>, RAP: right atrial pressure, mm Hg, BMRP2: bone morphogenetic protein receptor type II.