

The influence of processing parameters on strut diameter and internal porosity in Ti6Al4V cellular structure

Salem, H.; Carter, L. N.; Attallah, M. M.; Salem, H. G.

DOI:

[10.7449/2018/MST_2018_71_77](https://doi.org/10.7449/2018/MST_2018_71_77)

License:

None: All rights reserved

Document Version

Peer reviewed version

Citation for published version (Harvard):

Salem, H, Carter, LN, Attallah, MM & Salem, HG 2019, The influence of processing parameters on strut diameter and internal porosity in Ti6Al4V cellular structure. in *Materials Science and Technology 2018, MS and T 2018*. Association for Iron and Steel Technology, AISTECH, pp. 71-77, Materials Science and Technology 2018, MS and T 2018, Columbus, United States, 14/10/18. https://doi.org/10.7449/2018/MST_2018_71_77

[Link to publication on Research at Birmingham portal](#)

Publisher Rights Statement:

Checked for eligibility: 27/03/2019

General rights

Unless a licence is specified above, all rights (including copyright and moral rights) in this document are retained by the authors and/or the copyright holders. The express permission of the copyright holder must be obtained for any use of this material other than for purposes permitted by law.

- Users may freely distribute the URL that is used to identify this publication.
- Users may download and/or print one copy of the publication from the University of Birmingham research portal for the purpose of private study or non-commercial research.
- User may use extracts from the document in line with the concept of 'fair dealing' under the Copyright, Designs and Patents Act 1988 (?)
- Users may not further distribute the material nor use it for the purposes of commercial gain.

Where a licence is displayed above, please note the terms and conditions of the licence govern your use of this document.

When citing, please reference the published version.

Take down policy

While the University of Birmingham exercises care and attention in making items available there are rare occasions when an item has been uploaded in error or has been deemed to be commercially or otherwise sensitive.

If you believe that this is the case for this document, please contact UBIRA@lists.bham.ac.uk providing details and we will remove access to the work immediately and investigate.

THE INFLUENCE OF PROCESSING PARAMETERS ON STRUT DIAMETER AND INTERNAL POROSITY IN Ti6Al4V CELLULAR STRUCTURE

H.Salem¹, L. N. Carter², M. M. Attallah³ and H. G. Salem⁴

¹Nanotechnology program, American University in Cairo

²School of Metallurgy and Materials, University of Birmingham, UK

³The Advanced Materials Processing Lab. (AMPLAB), IRC in Materials Processing School of Metallurgy & Materials, University of Birmingham, UK

⁴Mechanical Engineering Department, American University in Cairo

Abstract

Ti6Al4V cellular structures were fabricated by selective laser melting using a wide range of processing parameters. Optical and scanning electron microscopy were employed to analyze the influence of laser power and scan speed on the strut diameter and the internal porosity. Strut diameter was found to be dependent on the input energy. It increased with increasing the input energy density. As for the internal porosity, at low laser power and high scan speed discontinuity within the struts and defects with entrapped non molten powder particles were observed. While at intermediate laser power and scan speed irregular defects caused by lack of diffusion were formed. At high laser power and low scan speed large pores were about 70µm were formed.

Key Words

Selective laser melting, lattice structure, processing parameters, porosity

Introduction

Porous structures possess unique properties in terms of thermal, electrical and mechanical properties due to their architecture and low density, which makes them desirable in many different applications such as filtering, automotive, aerospace and medical applications[1]. Ti6Al4V lattice structures are widely investigated for medical implant applications since Titanium and its alloys are known for their low density, high strength, corrosion resistance and most important of all is their high biocompatibility[2]. Furthermore, the nature of the lattice structures allow the bone ingrowth within the pores which enhances the implant fixation[3].

Lattice structures are considered a type of porous structures, which are composed of interconnected solid struts forming a unit cell that is the building unit of a lattice structure[4]. Porous structures are traditionally fabricated using casting methods[5,6], foaming[7] and stack and bond process[7,8]. However, fabricating porous structures with complex geometries with these traditional processes was a difficult task. Hence, introducing the additive laser manufacturing (ALM) technology made it is possible to produce cellular structure with complex architecture[1].

Selective laser melting (SLM) is one of the additive laser manufacturing (ALM) processes. Starting with preparing the STL file with the required design which is cut to slices with predetermined thickness. Afterwards a layer of powder particles spread with defined thickness, the laser beam starts scanning over the powder material based on the CAD model to melt and rapidly solidify to create a consolidated layer. Subsequently, another layer of powder is

deposited over the previously solidified layer and same process takes place until the final product is produced[9,10].

Despite the previously mentioned advantages of SLM processing over the conventional ones, using non optimized fabrication conditions in SLM results in a mismatch between the design and fabricated structure, in addition to internal defects that influences the porous structure performance[10]. Previous studies have widely investigated the influence of SLM processing parameters on the porosity level and morphology for bulk structures hence, process maps were developed for the defect formation mechanisms[11-14]. For example, Dilip et al[1]. studied the influence of SLM processing parameters on porosity evolution in an optimized process window of (150W, 750mm/s) and (195W, 1000mm/s), which was selected to give a nearly fully dense part. However, for cellular structures studies focused on the influence of the processing parameters on the mechanical properties and the morphology of fabricated structures[10,15-18]. Sing et al.[19] Investigated the influence of the processing parameters for pure titanium cellular structure on the strut diameter and thickness of powder adhesion. As for strut diameter, decrease in strut diameter was observed at all studied condition when compared to designed model. Regarding the thickness of adhesion powders, it decreases upon increasing the laser input energy. Accordingly, this study aims at deriving valuable correlation between the SLM processing parameters and the morphology of the built cellular structure in terms of the strut size and the internal porosity, which are directly influencing the produced mechanical properties.

Experimental Procedures

Materials and Processing

Gas atomized Ti6Al4V powder supplied by TLS Technik, Germany with a size range of the 20-50 μm was used for building the BCC cellular structures as show in Figure 1. A Concept Laser M2 Cusing SLM system of maximum laser power capability of 400 W, scan speed up to 4000 mm/s was used for fabricating the cellular structure. The fabrication process was performed in Argon atmosphere.

BCC cellular structure composed of connected struts with 200 μm diameter build in the form of cylindrical specimens were fabricated with dimensions of 25x30mm. In order to study the influence of the SLM processing parameters on the strut diameter and internal porosity, a set of lattice structures were built with constant layer thickness of 30 μm using a contour scanning strategy at different scan speeds and laser power that are listed in the next section.

Evaluation of the Fabricated Structure

Before characterization, all lattice structures where cleaned in acetone for 3 minutes to ensure the removal of any dirt or trapped loose powder. Field emission scanning electron microscope (FEG-SEM) Leo Supra 55—Zeiss Inc, with accelerating voltage up to 30 KV was used for investigating the morphology of the lattice struts. As for the strut diameter measurements, lattice structures were sectioned through the x-z direction (z-represents the cylinder height) mounted, ground and polished. Polished samples were examined under optical microscope (Leica DM

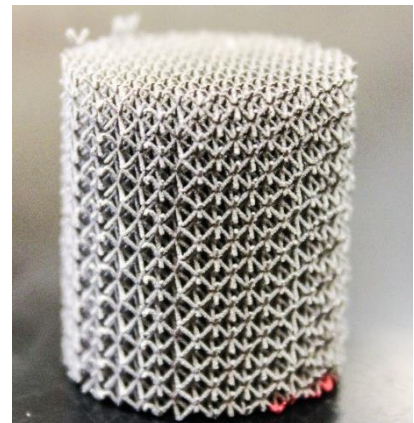


Figure 1. Lattice structure fabricated using SLM

IRM) for studying the internal porosity in the lattice structures. Sectioned lattice structures were investigated using optical microscopy, while ImageJ 40 was employed to evaluate the different strut diameters as a function of the SLM processing parameters.

To determine the suitable processing parameters for producing a dense lattice structure with high geometrical accuracy compared to the initial CAD model, a set of structures were built with laser power ranging from 100W to 300W and scan speed ranging 8000 mm/s to 4000 mm/s. All the structures were characterized and only three conditions are presented in this manuscript. The selected conditions represents different levels of input energy density. The lattice structures have been evaluated based on two different aspects, which are the influence of input energy on the strut diameter and the porosity level.

Results and Discussion

Influence of Input Energy on Strut Diameter

Table I. Processing parameters and strut diameter

Laser power (w)	Scan speed (mm/s)	Strut diameter (μm)
100	4000	163
200	2400	220
300	800	267

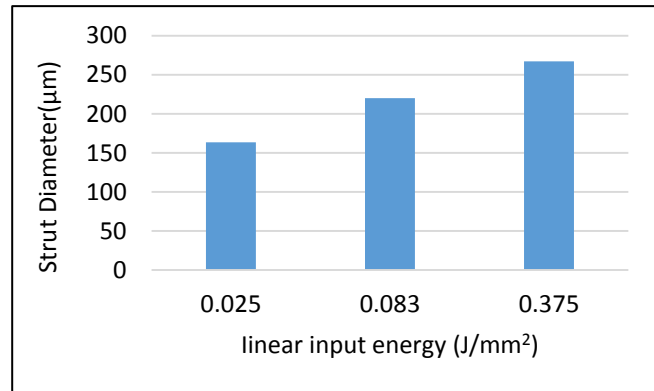


Figure 2. A diagram showing the variation of Strut diameter as a function of increasing linear input energy diameter

The fabricating conditions listed in table I directly influenced the strut diameter of the fabricated lattice structure. As shown in Figure 2, the strut diameter increased with increasing the input energy. This relation is attributed to the fact that inclined struts were built partially on loose powder, which resulted in adhesion of free powder (partially melted powder particles) to the surfaces of the struts. At high input energy condition, the energy transferred to attach powder particles was high enough to result in full melting of the attached powders and hence became part of the fabricated strut[19]. SEM images at the same magnification that are presented in Figure 3 show evidence for the measurements made and displayed in Figure 2.

The Aforementioned Observation agrees with the findings of Mullen et al.[20] In a study that evaluated the influence of laser beam energy and strut orientation on strut diameter of fabricated samples and it was concluded that strut diameter increase with increasing the laser energy and building angle of the strut. The fabrication technique of the inclined struts has a direct influence on the surface roughness and waviness induced to the struts “staircase effect”; this technique contributes in the gap between the actual and designed strut diameter[18].

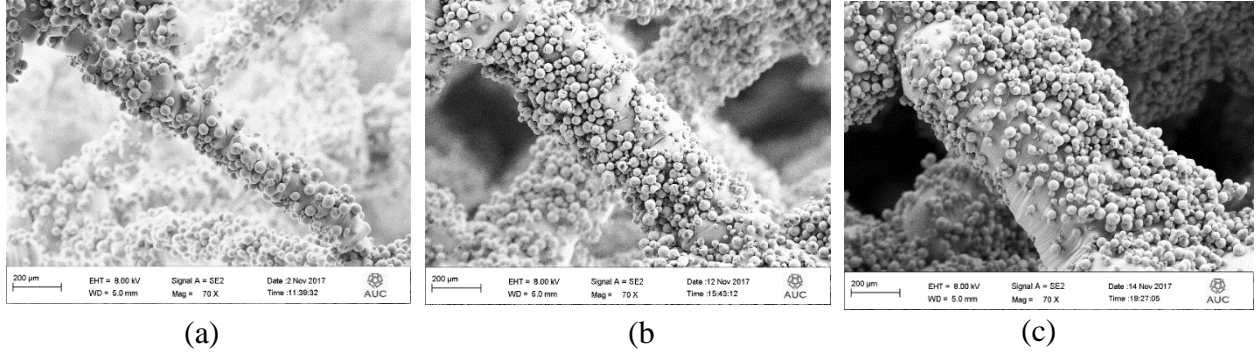


Figure 3. SEM images for struts at different fabrication conditions (a) 100W & 4000mm/s (b) 200W & 2400mm/s (c) 300W & 800mm/s

Influence of Input Energy on Internal Porosity

Investigation of the sliced sections along the x-z plane of the struts as a function of the three selected processing parameters is shown in Figure 4. Different zones were formed as a result of using different processing parameters. Those zones depend on the input energy during the SLM process. Accordingly, correlation between the input energy at the selected SLM processing conditions with the developed internal porosity of the lattice can be presented as follows:

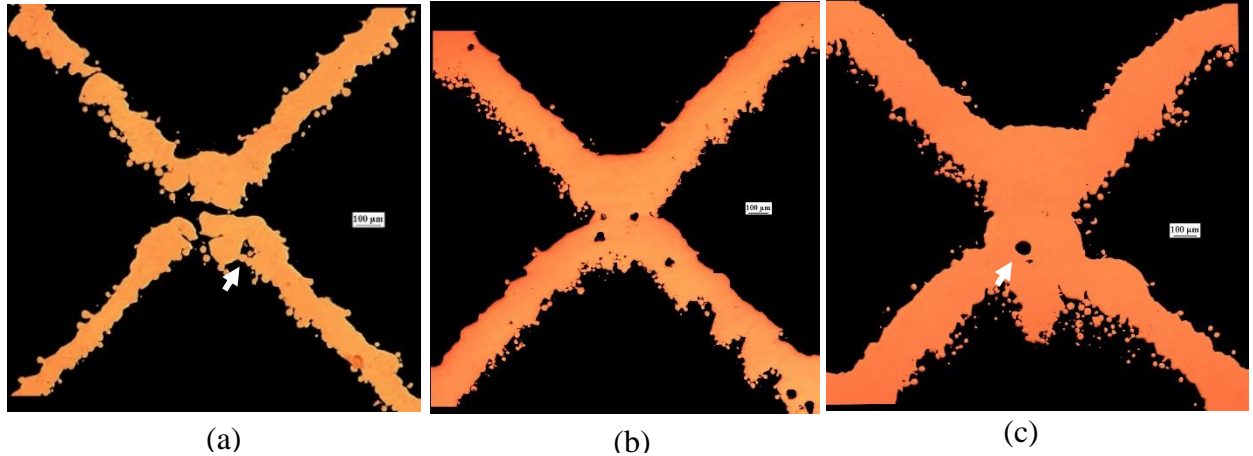


Figure 4. OM micrographs for internal porosity at different conditions (a) 100W & 4000mm/s (b) 200W & 2400mm/s (c) 300W & 800mm/s

Zone I: Low input energy: this zone is created as a result of combining low laser power with high scan speed. Such combinations resulted in the partial melting of the powder, creating an insufficient liquid phase[21]. The relatively low associated heat input led to the discontinuity within the strut due to the lack of diffusion between the melt pools. In addition, lack of diffusion defects were also manifested by the enclosed non molten powders, as indicated by the arrow in Figure 4a[12]. Moreover, a balling effect could be spotted in this zone, which is one of the well-known defects generated during SLM processes. This phenomena occurs at high speed conditions, due to poor wettability with the preceding layer leading to spheroidization of the melt-pool[22,23]. This balling effect had an adverse effect on the lattice integrity because it resulted in the detachment of the struts.

Zone II: Intermediate input energy zone: this zone is the resultant of intermediate laser power and scan speed. Irregular defects are formed as shown in Figure 4b due to the lack of diffusion between melt pools[12]. Irregularity in the struts thickness could be observed due to the fabrication technique of the inclined struts, which induces this type of waviness to the strut[18].

Zone III: High input energy zone: this zone was developed due to the combination of high laser power and low scan speed. This zone was associated with high temperatures resulting in sufficient molten material that mitigated the previously formed lack of diffusion defects. Spherical pores were also observed as shown in Figure 4c. Those defect could be attributed to the evaporation of alloying elements at such high input energy gained by the powder[11]. It was observed that those spherical pores are only formed at the node while the struts are free from defects. This could be attributed to the several thermal cycles at the node for being the intersection of four struts.

Conclusion

SLM processing parameters investigated in the current research shows that the input energy density has a significant influence on the strut diameter and porosity morphology within the fabricated struts. Different zones were developed based on changing the input energy. Additionally, it was observed that strut diameter size for Ti6Al4V lattice structure increased with increasing the input energy density.

References

- [1] J. J. S. Dilip, S. Zhang, C. Teng, K. Zeng, C. Robinson, D. Pal, and B. Stucker, "Influence of processing parameters on the evolution of melt pool, porosity, and microstructures in Ti-6Al-4V alloy parts fabricated by selective laser melting," *Prog. Addit. Manuf.*, vol. 2, no. 3, pp. 157–167, 2017.
- [2] L.-C. Zhang, H. Attar, M. Calin, and J. Eckert, "Review on manufacture by selective laser melting and properties of titanium based materials for biomedical applications," *Mater. Technol.*, vol. 31, no. 2, pp. 66–76, 2016.
- [3] X. Wang, S. Xu, S. Zhou, W. Xu, M. Leary, P. Choong, M. Qian, M. Brandt, and Y. Min, "Biomaterials Topological design and additive manufacturing of porous metals for bone scaffolds and orthopaedic implants : A review," *Biomaterials*, vol. 83, pp. 127–141, 2016.
- [4] B. Van Hooreweder, Y. Apers, K. Lietaert, and J. P. Kruth, "Improving the fatigue performance of porous metallic biomaterials produced by Selective Laser Melting," *Acta Biomater.*, vol. 47, pp. 193–202, 2017.
- [5] J. Wang, A. G. Evans, K. Dharmasena, and H. N. G. Wadley, "On the performance of truss panels with Kagomé cores," *Int. J. Solids Struct.*, vol. 40, no. 25, pp. 6981–6988, 2003.
- [6] Q. Xu, B. Gabbitas, S. Matthews, and D. Zhang, "The Effect of Binder and Plasticizer on Porous Titanium Compacts Prepared by Slip Casting," *Procedia Mater. Sci.*, vol. 4, no. December 2014, pp. 81–84, 2014.
- [7] I. J. Lorna, J. Gibson, and M. F. Ashby, *[Lorna_J._Gibson,_Michael_F._Ashby]_Cellular_Solid(BookZZ.org).pdf*, Second edi.

Cambridge, United Kingdom: the press syndicate of the university of cambridge, 1997.

- [8] H. N. . Wadley, "Multifunctional periodic cellular metals," *Philos. Trans. R. Soc. A Math. Phys. Eng. Sci.*, vol. 364, no. 1838, pp. 31–68, 2006.
- [9] S. M. Ahmadi, R. Hedayati, R. K. Ashok Kumar Jain, Y. Li, S. Leeftang, and A. A. Zadpoor, "Effects of laser processing parameters on the mechanical properties, topology, and microstructure of additively manufactured porous metallic biomaterials: A vector-based approach," *Mater. Des.*, vol. 134, pp. 234–243, 2017.
- [10] E. Sallica-Leva, A. L. Jardini, and J. B. Fogagnolo, "Microstructure and mechanical behavior of porous Ti-6Al-4V parts obtained by selective laser melting," *J. Mech. Behav. Biomed. Mater.*, vol. 26, pp. 98–108, 2013.
- [11] G. Kasperovich, J. Haubrich, J. Gussone, and G. Requena, "Correlation between porosity and processing parameters in TiAl6V4 produced by selective laser melting," *Mater. Des.*, vol. 105, pp. 160–170, 2016.
- [12] B. Zhang, Y. Li, and Q. Bai, "Defect Formation Mechanisms in Selective Laser Melting: A Review," *Chinese J. Mech. Eng.*, vol. 30, no. 3, pp. 515–527, 2017.
- [13] B. Song, S. Dong, B. Zhang, H. Liao, and C. Coddet, "Effects of processing parameters on microstructure and mechanical property of selective laser melted Ti6Al4V," *Mater. Des.*, vol. 35, pp. 120–125, 2012.
- [14] H. Gong, K. Rafi, T. Starr, and B. Stucker, "The Effects of Processing Parameters on Defect Regularity in Ti-6Al-4V Parts Fabricated By Selective Laser Melting and Electron Beam Melting," *24th Annu. Solid Free. Fabr. Symp.*, no. August 2016, pp. 424–439, 2013.
- [15] S. Van Bael, G. Kerckhofs, M. Moesen, G. Pyka, J. Schrooten, and J. P. Kruth, "Micro-CT-based improvement of geometrical and mechanical controllability of selective laser melted Ti6Al4V porous structures," *Mater. Sci. Eng. A*, vol. 528, no. 24, pp. 7423–7431, 2011.
- [16] C. Yan, L. Hao, A. Hussein, and D. Raymont, "Evaluations of cellular lattice structures manufactured using selective laser melting," *Int. J. Mach. Tools Manuf.*, vol. 62, pp. 32–38, 2012.
- [17] D. Gu and Y. Shen, "Processing conditions and microstructural features of porous 316L stainless steel components by DMLS," *Appl. Surf. Sci.*, vol. 255, no. 5 PART 1, pp. 1880–1887, 2008.
- [18] G. Pyka, G. Kerckhofs, I. Papantoniou, M. Speirs, J. Schrooten, and M. Wevers, "Surface roughness and morphology customization of additive manufactured open porous Ti6Al4V structures," *Materials (Basel)*, vol. 6, no. 10, pp. 4737–4757, 2013.
- [19] S. L. Sing, W. Y. Yeong, F. E. Wiria, and B. Y. Tay, "Characterization of Titanium Lattice Structures Fabricated by Selective Laser Melting Using an Adapted Compressive Test Method," *Exp. Mech.*, vol. 56, no. 5, pp. 735–748, 2016.
- [20] L. Mullen, R. C. Stamp, W. K. Brooks, E. Jones, and C. J. Sutcliffe, "Selective laser melting: A regular unit cell approach for the manufacture of porous, titanium, bone in-growth constructs, suitable for orthopedic applications," *J. Biomed. Mater. Res. - Part B Appl. Biomater.*, vol. 89, no. 2, pp. 325–334, 2009.

- [21] V. Manakari, G. Parande, and M. Gupta, *Selective Laser Melting of Magnesium and Magnesium Alloy Powders: A Review*, vol. 7, no. 1. 2016.
- [22] B. Song, S. Dong, S. Deng, H. Liao, and C. Coddet, "Microstructure and tensile properties of iron parts fabricated by selective laser melting," *Opt. Laser Technol.*, vol. 56, pp. 451–460, 2014.
- [23] V. Gunenthiram, P. Peyre, M. Schneider, M. Dal, F. Coste, and R. Fabbro, "Analysis of laser–melt pool–powder bed interaction during the selective laser melting of a stainless steel," *J. Laser Appl.*, vol. 29, no. 2, p. 022303, 2017.