

How do home and clinic blood pressure readings compare in pregnancy? A systematic review and individual patient data meta-analysis

Tucker, Katherine L; Bankhead, Clare ; Hodgkinson, James; Roberts, Nia; Stevens, Richard; Heneghan, Carl; Rey, Évelyne ; Lo, Chern ; Chandiramani, Manju; Taylor, Rennae S ; North, Robyn A; Khalil, Asma; Marko, Kathryn ; Waugh, Jason ; Brown, Mark ; Crawford, Carole ; Taylor, Kathryn S.; Mackillop, Lucy; McManus, Richard J

DOI:

[10.1161/HYPERTENSIONAHA.118.10917](https://doi.org/10.1161/HYPERTENSIONAHA.118.10917)

License:

Creative Commons: Attribution-NonCommercial-NoDerivs (CC BY-NC-ND)

Document Version

Publisher's PDF, also known as Version of record

Citation for published version (Harvard):

Tucker, KL, Bankhead, C, Hodgkinson, J, Roberts, N, Stevens, R, Heneghan, C, Rey, É, Lo, C, Chandiramani, M, Taylor, RS, North, RA, Khalil, A, Marko, K, Waugh, J, Brown, M, Crawford, C, Taylor, KS, Mackillop, L & McManus, RJ 2018, 'How do home and clinic blood pressure readings compare in pregnancy? A systematic review and individual patient data meta-analysis', *Hypertension*, vol. 72, no. 3, pp. 686-694. <https://doi.org/10.1161/HYPERTENSIONAHA.118.10917>

[Link to publication on Research at Birmingham portal](#)

General rights

Unless a licence is specified above, all rights (including copyright and moral rights) in this document are retained by the authors and/or the copyright holders. The express permission of the copyright holder must be obtained for any use of this material other than for purposes permitted by law.

- Users may freely distribute the URL that is used to identify this publication.
- Users may download and/or print one copy of the publication from the University of Birmingham research portal for the purpose of private study or non-commercial research.
- User may use extracts from the document in line with the concept of 'fair dealing' under the Copyright, Designs and Patents Act 1988 (?)
- Users may not further distribute the material nor use it for the purposes of commercial gain.

Where a licence is displayed above, please note the terms and conditions of the licence govern your use of this document.

When citing, please reference the published version.

Take down policy

While the University of Birmingham exercises care and attention in making items available there are rare occasions when an item has been uploaded in error or has been deemed to be commercially or otherwise sensitive.

If you believe that this is the case for this document, please contact UBIRA@lists.bham.ac.uk providing details and we will remove access to the work immediately and investigate.

Download date: 18. Apr. 2024

Preeclampsia, Pregnancy, and Hypertension

OPEN

How Do Home and Clinic Blood Pressure Readings Compare in Pregnancy?

A Systematic Review and Individual Patient Data Meta-Analysis

Katherine L. Tucker, Clare Bankhead, James Hodgkinson, Nia Roberts, Richard Stevens, Carl Heneghan, Évelyne Rey, Chern Lo, Manju Chandiramani, Rennae S. Taylor, Robyn A. North, Asma Khalil, Kathryn Marko, Jason Waugh, Mark Brown, Carole Crawford, Kathryn S. Taylor, Lucy Mackillop, Richard J. McManus

Abstract—Hypertensive disorders during pregnancy result in substantial maternal morbidity and are a leading cause of maternal deaths worldwide. Self-monitoring of blood pressure (BP) might improve the detection and management of hypertensive disorders of pregnancy, but few data are available, including regarding appropriate thresholds. This systematic review and individual patient data analysis aimed to assess the current evidence on differences between clinic and self-monitored BP through pregnancy. MEDLINE and 10 other electronic databases were searched for articles published up to and including July 2016 using a strategy designed to capture all the literature on self-monitoring of BP during pregnancy. Investigators of included studies were contacted requesting individual patient data: self-monitored and clinic BP and demographic data. Twenty-one studies that utilized self-monitoring of BP during pregnancy were identified. Individual patient data from self-monitored and clinic readings were available from 7 plus 1 unpublished articles (8 studies; $n=758$) and 2 further studies published summary data. Analysis revealed a mean self-monitoring clinic difference of ≤ 1.2 mmHg systolic BP throughout pregnancy although there was significant heterogeneity (difference in means, $I^2 > 80\%$ throughout pregnancy). Although the overall population difference was small, levels of white coat hypertension were high, particularly toward the end of pregnancy. The available literature includes no evidence of a systematic difference between self and clinic readings, suggesting that appropriate treatment and diagnostic thresholds for self-monitoring during pregnancy would be equivalent to standard clinic thresholds. (*Hypertension*. 2018;72:686-694. DOI: 10.1161/HYPERTENSIONAHA.118.10917.) • [Online Data Supplement](#)

Key Words: blood pressure ■ hypertension ■ pre-eclampsia ■ pregnancy ■ white coat hypertension

Worldwide, $\approx 10\%$ of women have high blood pressure (BP) during pregnancy.¹ Hypertensive disorders in pregnancy (HDP), including preeclampsia, are one of the commonest causes of maternal mortality^{2,3} and are a leading cause of direct maternal deaths in the United Kingdom.^{4,5}

Hypertension is commonly defined as systolic BP of ≥ 140 mmHg or diastolic BP ≥ 90 mmHg. If hypertension presents after 20 weeks gestation, it is known as gestational hypertension,

and when combined with the presence of maternal organ dysfunction, uteroplacental dysfunction, or significant proteinuria (>300 mg proteinuria/24 hours or >30 mg/mmol creatinine [protein-creatinine ratio]), it is known as preeclampsia.⁶⁻¹¹ Preeclampsia complicates 2% to 8% of all pregnancies and up to 25% of pregnancies in women with chronic hypertension.¹²

Current guidelines identify risk factors for preeclampsia based on medical and family histories.^{6,13} The UK guidelines

Received February 13, 2018; first decision February 26, 2018; revision accepted June 22, 2018.

From the Nuffield Department of Primary Care Health Sciences (K.L.T., C.B., R.S., C.H., C.C., K.S.T., R.J.M.) and Bodleian Health Care Libraries (N.R.), University of Oxford, United Kingdom; Institute of Applied Health Research, University of Birmingham, United Kingdom (J.H.); Obstetric, Medicine Division, Department of Obstetrics and Gynecology, CHU Ste-Justine, Montreal, Quebec, Canada (É.R.); Omnicare Women's Health Centre, Auckland, New Zealand (C.L.); Guy's and St Thomas' NHS Foundation Trust, Department of Women's Health, St Thomas' Hospital, London, United Kingdom (M.C.); Department of Obstetrics and Gynaecology, Faculty of Medical and Health Sciences, The University of Auckland, New Zealand (R.S.T., J.W.); Auckland City Hospital, New Zealand (R.A.N.); Fetal Medicine Unit, St George's University Hospitals NHS Foundation Trust, London, United Kingdom (A.K.); Molecular and Clinical Sciences Research Institute, St George's University of London, United Kingdom (A.K.); Vascular Biology Research Centre, Molecular and Clinical Sciences Research Institute, St George's University of London, United Kingdom (A.K.); Department of Obstetrics and Gynecology, The George Washington University School of Medicine and Health Sciences, DC (K.M.); Royal Victoria Infirmary, Newcastle upon Tyne, United Kingdom (J.W.); Department of Obstetrics and Gynecology, Faculty of Medical and Health Sciences, University of Auckland, New Zealand (J.W.); Department of Renal Medicine; St. George Hospital and University of NSW, Sydney, Australia (M.B.); and Oxford University Hospitals NHS Foundation Trust, Women's Centre, John Radcliffe Hospital, Oxford, United Kingdom (L.M.).

The online-only Data Supplement is available with this article at <https://www.ahajournals.org/doi/suppl/10.1161/HYPERTENSIONAHA.118.10917>.

Correspondence to Richard J. McManus, Nuffield Department of Primary Care Health Sciences, Radcliffe Observatory Quarter, Woodstock Rd, University of Oxford, OX2 6GG, United Kingdom. Email richard.mcmanus@phc.ox.ac.uk

© 2018 The Authors. *Hypertension* is published on behalf of the American Heart Association, Inc., by Wolters Kluwer Health, Inc. This is an open access article under the terms of the [Creative Commons Attribution Non-Commercial-NoDerivs](#) License, which permits use, distribution, and reproduction in any medium, provided that the original work is properly cited, the use is noncommercial, and no modifications or adaptations are made.

Hypertension is available at <https://www.ahajournals.org/journal/hyp>

DOI: 10.1161/HYPERTENSIONAHA.118.10917

recommend BP monitoring with increased frequency in those at higher risk of preeclampsia.⁶ Despite this, women still develop preeclampsia in the interval between antenatal visits, and a significant proportion of subsequent deaths occur after HDP, which developed after apparently normal antenatal visits.¹⁴ Reliance on intermittent clinic measurements may lead to both false-positive (white coat hypertension [WCH]) and -negative (masked hypertension) interpretations. Enhanced identification of developing hypertension among higher risk women could improve outcomes.

Self-monitoring of BP (SMBP), where individuals measure their own BP in a home setting, allows multiple measurements for several days with little disturbance of lifestyle and is now commonplace in adults with hypertension.^{15–17} Regular SMBP might improve detection of hypertension in the pregnant population while reducing the time, money, and inconvenience of frequent appointments, without compromising the ability to detect and monitor a potentially serious disease. Potential advantages of SMBP include more frequent BP monitoring, improved accuracy, and increased acceptability to pregnant women.^{18,19}

The importance and potential of self-monitored BP measurement has been noted in both a joint statement from the American Heart Association, American Society of Hypertension, and Preventive Cardiovascular Nurses Association and the recent European Society of Hypertension guidelines.²⁰ Consequently, in some countries, SMBP during pregnancy is becoming common: a Canadian pilot survey found >60% of women diagnosed with nonproteinuric hypertension in pregnancy were already SMBP.²¹ A subsequent survey, of Canadian obstetricians and primary care physicians, found that most used SMBP to check for WCH (where BP is higher in clinic than at home) rather than ambulatory BP monitoring.²²

Thresholds for SMBP in the hypertensive nonpregnant population are generally lower than when using clinic monitoring, but the clinic–home difference varies dependent on the population,^{23,24} and general populations have been shown to have minimal differences between home and clinic readings.^{25,26} Recent guidelines from the society of Obstetrician and Gynaecologists of Canada suggest a self-monitoring threshold of 135/85 mm Hg.²⁷ However, there are limited data on SMBP monitoring during pregnancy to guide such recommendations. This study aimed to systematically review the available evidence for differences between self-monitored and clinic BP during pregnancy and investigate this using individual patient data (IPD) where available.

Methods

Data Availability

Data were obtained from third parties for this project. Several of the participating studies required specific data sharing agreements from their host institution. Current agreements are for the purposes of this analysis alone, and as such new approval would be required. Requests for Data Sharing should be directed to information.guardian@phc.ox.ac.uk. Such requests will be considered by all data holders involved in this collaboration. There were no specific study materials.

Search Strategy for Identification of Studies

The searches were run from database inception to July 2016, using a combination of title/abstract keywords and subject headings for

self-measurement, BP, and pregnancy (Figure S1 in the [online-only Data Supplement](#)). No date or publication date limits were applied. We searched the Cochrane Database of Systematic Reviews, Database of Abstracts of Reviews of Effectiveness, Cochrane Central Register of Controlled Trials (The Cochrane Library, Wiley), Medline (OvidSP; 1946–present), Embase (OvidSP; 1974–present), CINAHL (EbscoHOST; 1980–present), PsycINFO (OvidSP; 1967–present), Science Citation Index Expanded, Social Sciences Citation Index, Conference Proceedings Citation Index-Science & Conference Proceedings Citation Index-Social Science & Humanities (Web of Knowledge; 1945–present).

Inclusion Criteria

All primary studies of any study design that included SMBP during pregnancy in a sample of multiple women were included. Each corresponding author was contacted requesting IPD or summary data for self-monitored and clinic BP. Studies that provided clinic and self-monitored data or published sufficient data to allow comparison were included in the analysis. This study was registered on Prospero: CRD42016050528.

Data Extraction

Two reviewers (K.T. and J.H.) independently reviewed the titles and abstracts of identified articles and, after assessment of the full text of potentially relevant papers, extracted data (Figure S2). Data extraction included a methodological quality assessment adapted from the Quality Assessment of Diagnostic Accuracy Studies checklist²⁸—clear selection criteria for participants, response rate, validation of sphygmomanometer, validation of self-monitored readings, and blinding of those performing clinic measurements. Data extractions were performed in duplicate and disagreements resolved by consensus.

Individual Patient Data

Authors from all eligible studies were approached to provide anonymized IPD. The data were considered at 4 time periods (5–14, 15–22, 23–32, and 33–42 weeks' gestation), and these were chosen to enable the inclusion and analysis of relevant comparative data from included studies throughout pregnancy. A trimester-based comparison would have resulted in loss of data or inappropriate comparisons.

Data Analysis and Statistical Methods

The absolute differences in BP between clinic and self-measurements were calculated (means and SDs) across all studies and in subgroups according to gestational stage. These differences were calculated using the nearest (closest in time, within 3 days either side) clinic and self-monitored readings for each woman in each comparison period, including only one comparison per women per stage (5–14, 15–22, 23–32, and 33–42 weeks) to avoid bias toward women who completed more readings than others.

Meta-analysis was undertaken in Stata 13 (StataCorp, LP) to create forest plots, and the I^2 statistic was used to estimate statistical heterogeneity for each outcome. IPD data were used to calculate the means of differences. A subgroup analysis of normotensive and hypertensive participants (based on clinic BP $\geq 140/90$) was completed to examine differences between the groups. To compare with aggregate data, the difference in means was also calculated. Where substantial heterogeneity was detected, the direction of effect was assessed, and potential reasons for heterogeneity were considered. A random-effects analysis was used, and differences between self-monitored and clinic readings were assessed using scatter and Bland-Altman plots.

Definitions

There was no evidence before this work to guide the definitions of hypertension on the basis of home readings. In general unselected populations, there is little difference between home and clinic readings.^{25,26} The results from the review, which included mixed populations of both normotensive and hypertensive women, suggested little overall difference between home and clinic readings. Current UK and international guidelines use a clinic threshold of 140/90 mm Hg for diagnosing hypertension during pregnancy. For the purposes of this

work, true hypertension was considered present when self-monitored and clinic readings both had systolic BP ≥ 140 and diastolic BP ≥ 90 mmHg in the comparison period. Masked hypertension was defined as normotensive clinic BP $< 140/90$ mmHg with self-monitored readings of systolic BP ≥ 140 or diastolic BP ≥ 90 mmHg. Finally, WCH was defined as clinic systolic BP ≥ 140 mmHg and diastolic BP ≥ 90 mmHg with normotensive self-monitored readings ($< 140/90$ mmHg). Recognizing that home monitoring thresholds for hypertension suggested for the nonpregnant hypertensive population are lower (135/85 mmHg), a sensitivity analysis was performed using a home threshold for hypertension of 135/85 mmHg.

Results

Findings From the Systematic Review

From 2654 journal articles identified, 121 were assessed in full. Twenty-one articles included SMBP during pregnancy in a sample of multiple women. Corresponding authors were contacted requesting IPD or summary data for self-monitored and clinic BP: there was no reply from 4 and a further 10 were unable to provide IPD, leaving 7 studies (6 authors) where investigators provided BP data from both self-monitoring and clinic BP during pregnancy ($n=596$; Figure 1).^{29–34} One further study undertaken by our group and not published in full at the time was included ($n=162$; total 758).³⁵ Of the 10 studies unable to provide data, 2 had published summary data of self-monitored-clinic comparison (Table 1).^{36,37}

Characteristics of Studies Included in the IPD Analysis

Included studies were performed between 2002 and 2017 on a range of populations, including women with a healthy pregnancy,^{31,38} women with suspected hypertension,^{29,30} and those with known gestational hypertension or preeclampsia.^{31,32,34} Considerable variation was seen in both monitoring schedules

and the gestation period when the readings were taken. Only 2 studies used a monitor that had passed validation testing in pregnancy (Table 2).^{34,35}

Difference Between Self-Monitored and Clinic Readings Throughout Pregnancy

IPD from the 8 included studies ($n=758$),^{29–35,38} contained BP readings throughout pregnancy (Figure 2). The overall mean differences between home and clinic readings appeared small throughout pregnancy (Table 3), with mean of differences between 1.5 to 2.2 mmHg systolic (Figure 2) and 0.7 to 1.5 mmHg diastolic BP (Figure S3). However, there was significant heterogeneity between studies ($I^2 > 80$ at all gestational stages for systolic BP), which was only slightly improved by removal of single studies.

Subgroup analysis of normotensive and hypertensive groups showed that normotensive pregnant women have little differences between home and clinic readings with mean differences between -0.6 and 1.2 mmHg systolic (Figures S9 and S10) and -0.6 and 0.7 mmHg diastolic. Hypertensive women, however, had much larger differences between home and clinic (Figures S7 and S8). The heterogeneity remained high, and the number of hypertensive participants included at the early stages of pregnancy was low.

Differences in means (office and home) were plotted for both the IPD data and summary data from other studies where possible (Figures S4 and S5).^{36,37} Reported differences in means were higher from studies for which IPD data were not available (4.06 mmHg at 15–22/40 and 2.9 mmHg at 23–32/40).^{36,37}

Influence of Absolute BP on Mean Difference Between Self-Monitored and Clinic Readings

Bland-Altman and scatter plots show good agreement between self-monitored and clinic BP across the range of both systolic and diastolic pressures (Figure 3; Figure S6). At later gestation, the number of readings above the limits of agreement were higher than in early pregnancy (Figure 3).

Prevalence of True and WCH by Gestation

As gestation increased, mean clinic BP initially remained low, and then began to rise from 33 weeks gestation. Using a threshold of $\geq 140/90$ mmHg for hypertension for both clinic and self-monitored BP, the prevalence of true hypertension and WCH increased with gestation. At 33 to 42 weeks, the prevalence of WCH and true hypertension was similar, indicating women with hypertension on clinic measurements were as likely to have normal BP when self-monitoring as they were to have true hypertension (Table 3). A sensitivity analysis of a self-monitored 135/85 mmHg threshold is shown in Table S1.

Discussion

This systematic literature review identified 21 studies that included SMBP during pregnancy. IPD were available for both self-monitored and clinic BP readings from 8 studies (758 patients).^{29–35,38} Comparison of self-monitored and clinic readings revealed no clinically relevant difference throughout pregnancy, with significant heterogeneity between studies that may be accounted for by the varying populations.

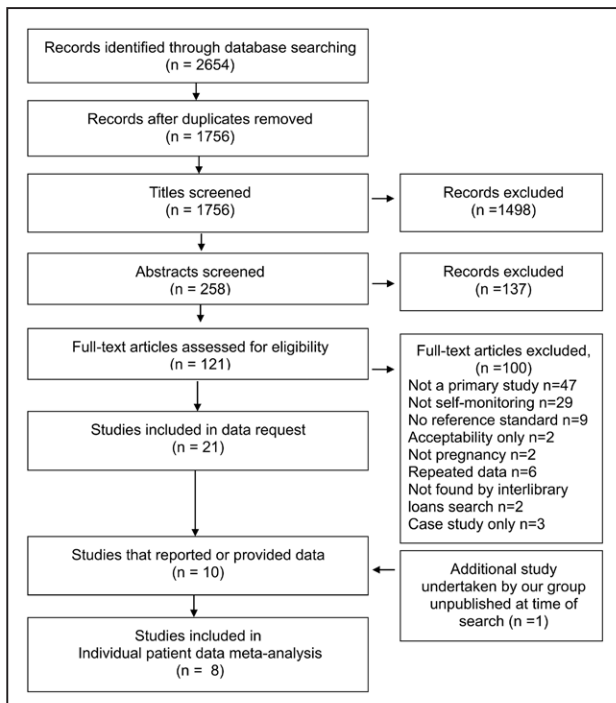


Figure 1. Flow diagram of the systematic review. Studies included in the analysis of clinic and self-monitored blood pressure during pregnancy.

Table 1. Studies Included in Analysis

Author (Year) Country	Population	No. of Participants	Gestation
IPD			
Brown (2004) Australia	Suspected hypertension	66	Average of 23 wk
Chandiramani (2006) United Kingdom	Suspected hypertension	100	Throughout pregnancy
Lo (2002) New Zealand	1) Healthy pregnancy at booking	101	Throughout pregnancy >38 wk
	2) Women with preeclampsia	45*	
Rey (2007) Canada	1) Hypertensive	100	Throughout pregnancy
	2) Normotensive high risk of preeclampsia	20	
Rey (2009) Canada	1) Chronic hypertension	111	Third trimester (28–38 wk gestation)
	2) Preeclampsia	41	
	3) Isolated office hypertension (WCH)	7*	
Sheehan (2016) United Kingdom	Hypertensive pregnancy	93*	Throughout pregnancy (12–40 wk)
Marko (2016) United States	first-trimester low risk	100 (50 randomized to intervention*)	Through pregnancy
Tucker (2017) United Kingdom	Higher risk pregnancy	201*	Throughout pregnancy (12–6 wk post-partum)
Summary data only			
Mooney (1991) United Kingdom	Any pregnancy	35	30 wk
Ishikuro (2013) Japan	Healthy singleton pregnancy with no history of hypertension	575	20 wk till 4 wk post-partum

Table of the 10 studies with BP data for analysis. Eight studies were able to provide IPD and 2 further studies provided summary data. BP indicates blood pressure; IPD, individual patient data; and WCH, white coat hypertension.

*Data for both clinic and self-monitored readings were available as follows: Lo et al³¹ provided data for 102/146 participants, Rey et al^{32,33} provided data for 202 participants from combined studies (presented together), Sheehan et al³⁴ provided data for 78 of 93 participants, Marko et al³⁸ provided data from 47 of 50 participants, and Tucker et al³⁵ provided data from 162 of 201 participants. Data were available from 758 participants (81% of the total participants in the studies included in the IPD).

Interestingly, although overall differences between self-monitored and clinic pressure were small, the prevalence of WCH increased reaching 13% toward the end of pregnancy (33–42 weeks gestation). By this stage, WCH was as prevalent as true hypertension.

Strengths and Weaknesses

This study's strengths include the systematic capture of all of the current literature and the inclusion of IPD data from 8 studies and >750 women. To our knowledge, this is the first comparison of self-monitored and office readings using data drawn from multiple studies, settings, and countries. Weaknesses include that 11 of the 21 studies may have had additional data on self-monitored and clinic readings but did not publish or provide it.^{18,39–48} In addition, IPD from the largest study to date were not available.³⁷

All studies had some degree of methodological flaw (or lack of clarity), and only 2 studies used a self-monitoring device validated in the pregnant population. The validation of monitors in pregnancy and preeclampsia is important as pregnancy causes changes to the vasculature meaning that many generally validated monitors are inaccurate.⁴⁹ Furthermore, the development of preeclampsia leads to significant and widespread hemodynamic disturbances, which have been shown to affect the accuracy of some BP monitors that are accurate in normal pregnancy.^{50–52} Only 5 monitors have been validated for home use in pregnancy.^{41,53–56}

The selection of participants by contributing studies was generally clear although details of pregnancy stage were sometimes lacking and only 1 study was randomized. Attrition reporting was not always clear, and checking of self-monitored readings was not reported in any of the studies. Reporting of results was generally adequate (Table 2).

Studies were statistically and clinically heterogeneous reflecting diverse populations (health state, gestation of pregnancy) and clinical contexts (date and country of study). Many included studies were relatively small and published for a long time period (1991–2017), during which time there have been advances in BP monitoring technology. Most studies included in this review used monitors that have not been validated in pregnancy. The monitor used by both Brown et al,²⁹ and Lo et al³¹ subsequently failed validation in the preeclamptic population. However, removing these studies from our analysis did not remove the observed heterogeneity. It is clear that further validation of BP monitors in the pregnant population is needed including individuals with preeclampsia and obesity.

A further potential cause of the observed heterogeneity could be differences in the populations studied. For example, both Lo et al³¹ and Ishikuro et al³⁷ (Figures S4 and S5) observed normotensive healthy pregnant populations, and both Brown et al²⁹ and Chandiramani et al³⁰ (Figure 2; Figures S3–S5) selected women who had suspected hypertension; however, the clinic–self monitored differences in these study groups were opposing (Figure 2; Figures S3–S5). It may be

Table 2. Methodological Details of the Included Studies

First Author	Type of Study	Clear Selection Criteria	Response Rate	Clinic Monitor	Same Ref Standard Across Sample	Self/Home Monitor	Validated for Use in Pregnancy	Adequate Checking of Home Readings	Regime Self-Monitoring	Time Between Comparisons	Blinding to Home Values
IPD											
Brown et al ²⁹	Observational	Y	NC	Routine mercury sphyg (phase V)	Y	Omron HEM 705CP	N	N	6× a day	Next day	NC
Chandiramani et al ³⁰	Observational	Y	NC	Microlife 3BT10	Y	Microlife 3BT10	N	N	Not clear	Not clear	NC
Lo et al ³¹	Observational	Y	NC	Omron HEM-705 and Mercury	N	Omron HEM-705CP	N	N	4 readings within 24 h	3 readings 24 h before home readings	Y
Rey et al ³³	Observational	Y	NC	Aneroid	Y	Aneroid	N	N	3×–7× a week	Same antenatal period	Y
Rey et al ³²	Observational	Y	NC	Aneroid	Y	Aneroid	N	N	3×–7× a week	Average of all self-monitored readings in the week preceding.	Y
Sheehan et al ³⁴	Observational	Y	NC	Routine	Y	Microlife WatchBPHome	Y	NC	Twice a day	Closest clinic reading*	N
Marko et al ³⁸	Controlled study	Y	First 100 women in clinic	Routine		NC	NC	Y	NC	Closest clinic reading*	N
Tucker et al ³⁵	Observational	Y	NC	Routine	Y	Microlife WatchBPHome	Y	Monitor memory	3 d a week	Closest clinic reading*	N
Summary data only											
Ishikuro et al ³⁷	Observational	Y	34%	Not clear	NC	Omron HEM747IC HEM708IC	N	NC	Every morning	Clinic BP every 4 wk	Y
Mooney et al ³⁶	Observational	Y	NC	Not clear	NC	Not Clear	Not known	NC	Not clear	Not clear	Y

Table showing the methodological details of the included studies. N indicates no; NC, not clear; and Y, yes.

*The nearest in time was considered the nearest in the 7 days around the first clinic reading (ie, in the 3 days before and 3 days after).

that the monitor used, schedule of monitoring, or some other factor was more influential.

Overall, the data were representative of populations that may use home monitoring, either to detect hypertension in pregnancy (normotensive pregnancies^{31,35}), differentiate between true and WCH (suspected but not confirmed hypertension^{29,30}), or manage hypertension (women with gestational hypertension or preeclampsia^{30–32}).

Comparison With the Previous Literature

Clear SMBP thresholds for hypertension in pregnancy have not been established in the United Kingdom.²³ Canadian guidelines recommend a self-monitored threshold of 135/85 mm Hg although it is unclear on what this is based, presumably the nonpregnant population.^{17,27} A sensitivity analysis using a threshold for hypertension of 135/85 mm Hg for home monitoring showed a slightly higher level of discordance with diagnosis based on clinic readings. However, subgroup analysis of

women with hypertension (defined by clinic readings) showed that this group had a much larger home-office difference, suggesting that this group was selecting for a larger white coat effect and therefore lower thresholds may be appropriate.

Previous reports have suggested that the prevalence of WCH in pregnancy may be considerable.^{43,57} In the general population, the amount of white coat effect is higher in hypertensive groups compared with normotensive groups.²⁴ This is thought to be because the higher average BP is more likely to result in variations above threshold and because this population may be more anxious about clinic results. This increase in white coat effect in hypertensive groups seems also to be true in pregnancy as several studies show high prevalence of WCH in hypertensive pregnancy.^{33,37,43,57} Some data suggest that women with WCH are at low risk of complications, but others that WCH reflects increased variability and hence risk.³⁸ Further work is required to understand the true prognosis of WCH in pregnancy.

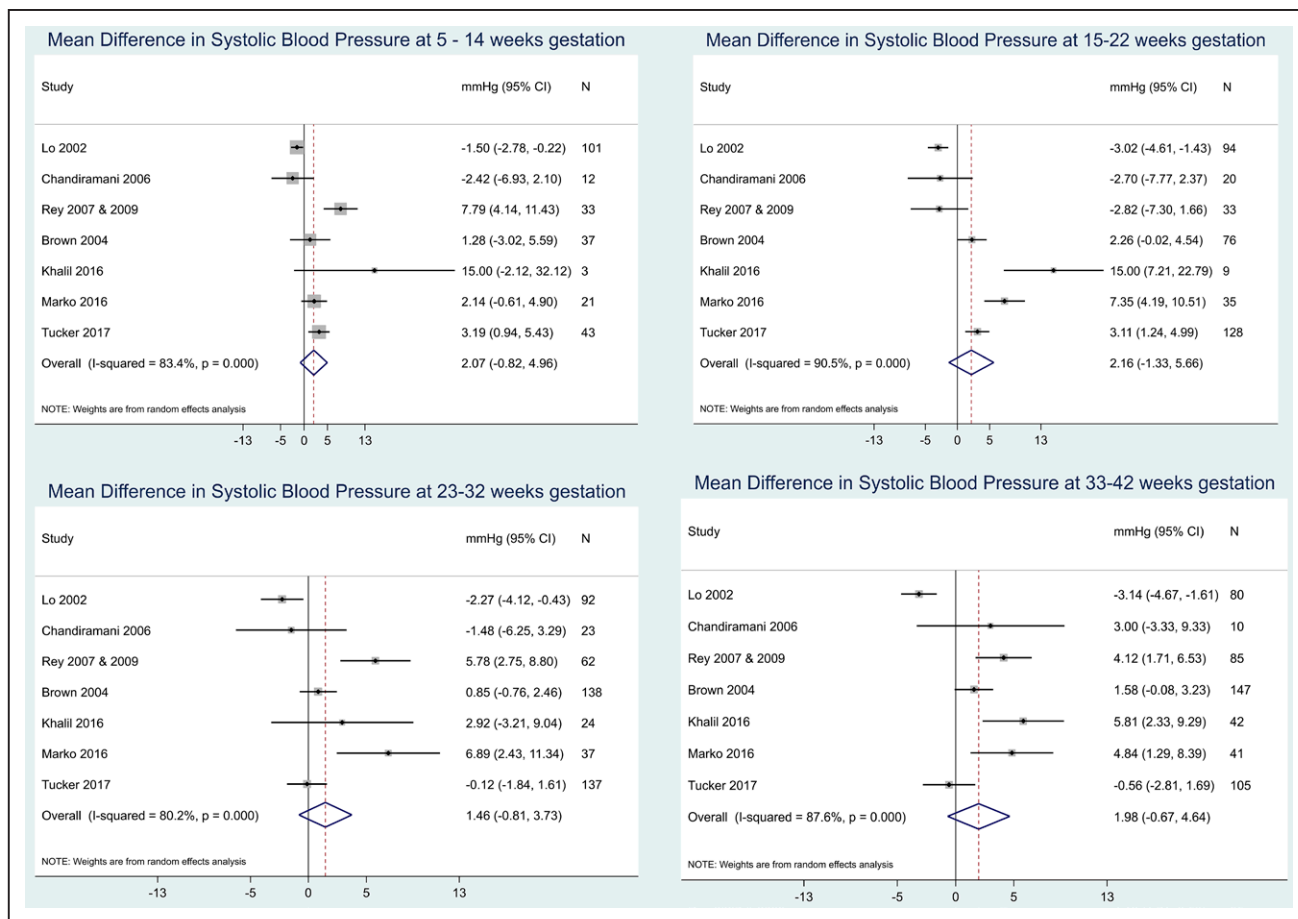


Figure 2. Comparison of clinic and self-monitored systolic blood pressure (BP). Forest plots were constructed to examine the difference in mean BP (clinic-home) by the type of monitoring and study group. Data were analyzed as continuous variables and presented here in mmHg, plotted by gestational stage. CI indicates confidence interval.

Perspectives

Current UK guidelines recommend more frequent BP measurements should be considered in those at higher risk of preeclampsia.⁶ It is for these women that SMBP is likely to be most effective in terms of diagnosing higher BP in pregnancy. SMBP could also be beneficial to identify WCH in those presenting with high clinic pressures and to improve

the monitoring of women with true chronic or gestational hypertension.⁴³

If SMBP were to become commonplace in antenatal care, reference thresholds for self-monitored readings would be needed. Previous studies have examined the normal range of out-of-office BP during healthy pregnancy (predominantly using ambulatory BP monitoring) with varying

Table 3. Overall Blood Pressure by Gestation Plus Prevalence of True, Masked, and White Coat Hypertension

Gestation, wk	5-14	15-22	23-32	33-42
No. of participants	250	431	519	512
Overall mean clinic BP (SD), mm Hg	117 (14)/72 (11)	118 (14)/72 (10)	120 (15)/74 (12)	126 (16)/80 (12)
Overall mean home BP (SD), mm Hg	118 (14)/73 (10)	117 (13)/72 (9)	120 (13)/74 (10)	125 (13)/79 (9)
Prevalence true normotensive, n (%)	211 (84.4%)	384 (89.1%)	421 (81.1%)	343 (67%)
Prevalence white coat hypertension, n (%)	21 (8.4%)	26 (6.0%)	48 (9.3%)	66 (12.9%)
Prevalence masked hypertension, n (%)	8 (3.2%)	7 (1.6%)	15 (2.9%)	29 (5.7%)
Prevalence true hypertension, n (%)	10 (4%)	14 (3.3)	35 (6.7%)	74 (14.5%)

A threshold of 140/90 mm Hg for both clinic and self-monitored readings was used to determine participants with true normotension (when both clinic and self-monitored readings were <140/90 mm Hg) and true hypertension (when both clinic and self-monitored readings were ≥140 mm Hg systolic or 90 mm Hg diastolic BP). Masked hypertension was defined as clinic BP <140/90 mm Hg and self-monitored readings ≥140 mm Hg systolic or 90 mm Hg diastolic. Finally, WCH was defined as clinic systolic BP ≥140 mm Hg or diastolic BP ≥90 mm Hg with normotensive self-monitored readings (<140/90 mm Hg). Data were analyzed from the combined IPD set. BP indicates blood pressure; IPD, individual patient data; and WCH, white coat hypertension.

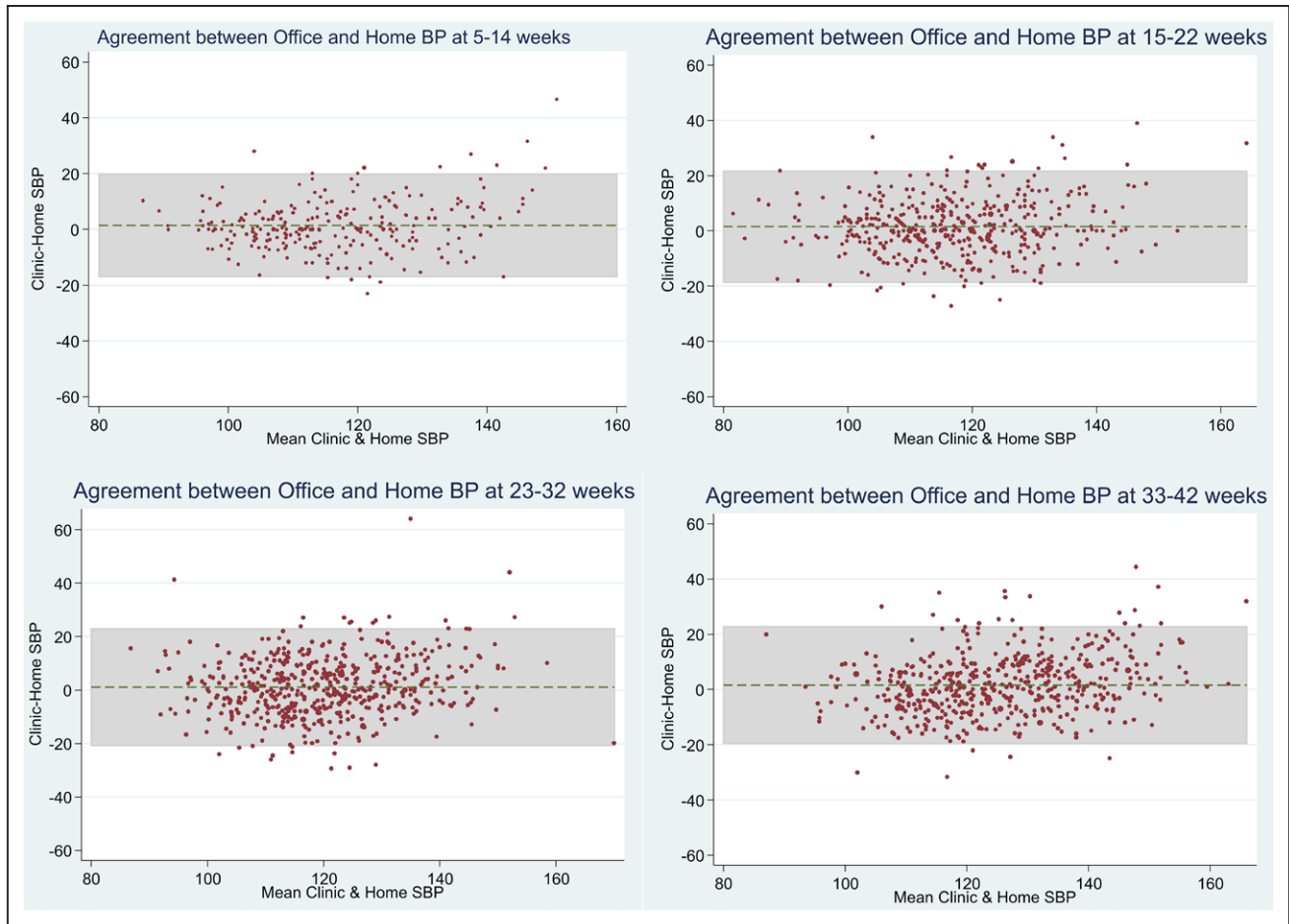


Figure 3. Agreement between clinic and self-monitored blood pressure (BP) readings during pregnancy. Bland-Altman plots were used to examine the influence of mean BP on the clinic–self difference. The mean clinic and self-monitored readings were plotted against clinic–self monitored readings (complete cases). At 5 to 14 wk, there was a mean difference of 1.403, 6.8% (17 of 250) readings were outside limits of agreement, and 95% limits of agreement were -16.943 , 19.750 . At 15 to 22 wk, a mean difference of 1.550 was observed, 6.26% (27 of 431) readings were outside limits of agreement, and the 95% limits of agreement were -18.576 , 21.677 . At 23 to 32 wk gestation, there was a mean difference of 1.067, 4.82% (25 of 519) readings were outside limits of agreement, and the 95% limits of agreement were -20.736 , 22.871 . At 33 to 42 wk gestation, there was a mean difference of 1.494, 4.66% (22 of 472) readings were outside limits of agreement, and 95% limits of agreement were -19.429 , 22.417 . Diastolic plots are shown in Figure S6.

conclusions.^{42,58} This is the first study to compare self-monitored and office readings across multiple studies. We found that self-monitored and clinic readings had little overall difference, suggesting that a self-monitored threshold equivalent to clinic threshold (currently 140/90 mmHg) would be appropriate during pregnancy for normotensive women. Confirmation of this would require a study relating home BP to outcome. In addition, although we found little variation in mean differences, some women had clinically important differences between home and clinic readings, and therefore the prognostic significance of WCH and masked hypertension in pregnancy should also be considered. Subgroup analysis revealed that hypertensive pregnant women tended to have much larger home–office difference than normotensive pregnant women.

The clinical context of home monitoring is an important consideration. Whether the self-monitoring was additional to standard antenatal clinic visits, or being used as a replacement is relevant, as would which group of women are involved; those at risk of HDP, or those with HDP (ie, is the monitoring for diagnosis or management of hypertension?). For both groups, it would be reasonable to suggest that women with

home readings of 140/90 mmHg should be seen in clinic for safety. As current guidelines suggest starting medication for hypertension at 150/100 mmHg, additional appointments in clinic may not be justified if clinic readings are likely to be $<140/90$ mmHg. Hypertensive pregnant women defined on clinic pressures, however, may require a threshold similar to the hypertensive population outside pregnancy (135/85 mmHg); previous studies have reported a high prevalence of WCH, and our subgroup analysis would support this.

Conclusions

This IPD analysis provides the best evidence to date on suitable thresholds for the diagnosis of HDP. Although showing heterogeneity between studies, overall there seems to be little difference between self-monitored and clinic readings. This evidence needs to be tempered by the knowledge that most monitors used in included studies were not validated and that monitoring schedules varied between studies. However, a finding of broad equivalence of clinic and home BP is in line with general population studies outside of pregnancy, unlike those with participants included on the basis of raised BP in

the clinic. In turn, it suggests that home BP thresholds used for decision making in an unselected population in pregnancy should be equivalent to those currently used in clinic. SMBP, therefore, seems to have a role in ruling out WCH in those presenting with high clinic pressures. Understanding the true place of self-monitored BP in pregnancy will require further studies with validated monitors to confirm the equivalence of thresholds, including careful linkage to outcomes for women and their offspring. In addition, outcome studies are needed to better understand the prognosis of both WCH and masked hypertension in pregnancy.

Acknowledgments

We thank Dr Thierry Denolle, Dr Paul Mooney, Prof Kevin Dalton, Dr Ross-McGill, Prof William Rayburn, Dr Zuspan, Prof Jim Thornton, and Dr Janet Hirst who have provided advice and support and Carla Betts for administration support.

Sources of Funding

This article represents independent research commissioned by the National Institute for Health Research (NIHR) School of Primary Care Research (SPCR; SPCR project no. 171). The views expressed in this publication are those of the authors and not necessarily those of the National Health Service, the NIHR, or the Department of Health. R.J. McManus received support from an NIHR Professorship (NIHR-RP-02-12-015) and the NIHR Oxford Collaboration for Leadership in Applied Health Research and Care. C. Bankhead is supported by the NIHR Biomedical Research Centre, Oxford. The study was conceived by R.J. McManus who in collaboration with K.L. Tucker, C. Heneghan, J. Hodgkinson, and L. Mackillop gained the funding. The protocol was developed by K.L. Tucker, R.J. McManus, J. Hodgkinson, C. Bankhead, and R. Stevens with the advice and support of all authors. Literature searches were performed by N. Roberts, and review process completed by J. Hodgkinson and K.L. Tucker. Data were provided by E. Rey, C. Lo, K.S. Taylor, R.A. North, M. Chandiramani, R.S. Taylor, M. Brown, A. Khalil, K. Marko, and J. Waugh. Data cleaning was performed by K.L. Tucker, C. Bankhead, and K.S. Taylor, and statistical analysis was performed by K.L. Tucker and C. Bankhead with advice from R. Stevens. The first draft of the article was written by K.L. Tucker with R.J. McManus and subsequently edited and approved by all coauthors. All authors have read and approved the final manuscript.

Disclosures

The authors declare the following conflicts of interest: A. Khalil has the Copyright for An App and Software that enables pregnant women to monitor blood pressure at home. This was developed as part of an Innovation Grant funded by the Health Foundation. L. Mackillop receives consultancy fees from Drayson Technologies. The other authors report no conflicts.

References

- Duley L. The global impact of pre-eclampsia and eclampsia. *Semin Perinatol.* 2009;33:130–137. doi: 10.1053/j.semperi.2009.02.010.
- Say L, Chou D, Gemmill A, Tunçalp Ö, Moller AB, Daniels J, Gülmezoglu AM, Temmerman M, Alkema L. Global causes of maternal death: a WHO systematic analysis. *Lancet Glob Health.* 2014;2:e323–e333. doi: 10.1016/S2214-109X(14)70227-X.
- Khan KS, Wojdyla D, Say L, Gülmezoglu AM, Van Look PF. WHO analysis of causes of maternal death: a systematic review. *Lancet.* 2006;367:1066–1074. doi: 10.1016/S0140-6736(06)68397-9.
- Knight M KS, Brocklehurst P, Neilson J, Shakespeare J, Kurinczuk JJ, eds; on Behalf of MBRRACEUK. *Saving Lives, Improving Mothers' Care Lessons Learned to Inform Future Maternity Care From the UK and Ireland Confidential Enquiries into Maternal Deaths and Morbidity 2009–2012. Maternal, Newborn and Infant Clinical Outcome Review Programme.* Oxford, UK: National Perinatal Epidemiology Unit, University of Oxford; 2014.
- Cantwell R, Clutton-Brock T, Cooper G, et al. Saving Mothers' Lives: reviewing maternal deaths to make motherhood safer: 2006–2008. The Eighth Report of the Confidential Enquiries into Maternal Deaths in the United Kingdom. *BJOG.* 2011;118(suppl 1):1–203. doi: 10.1111/j.1471-0528.2010.02847.x.
- NICE. NICE Clinical Guideline 62. Antenatal Care. Published: March 2008; updated Jan 2017. <https://www.nice.org.uk/guidance/cg62/resources/antenatal-care-for-uncomplicated-pregnancies-pdf-975564597445>.
- Milne F, Redman C, Walker J, Baker P, Black R, Blincoe J, Cooper C, Fletcher G, Jokinen M, Moran PA, Nelson-Piercy C, Robson S, Shennan A, Tuffnell A, Waugh J; PRECOG II Group. Assessing the onset of pre-eclampsia in the hospital day unit: summary of the pre-eclampsia guideline (PRECOG II). *BMJ.* 2009;339:b3129.
- National Collaborating Centre for Women's and Children's Health (UK). *Hypertension in pregnancy: the management of hypertensive disorders during pregnancy.* NICE Clinical Guideline 107. London, UK: RCOG Press; 2011.
- World Health Organization. *WHO Recommendations for Prevention and Treatment of Pre-Eclampsia and Eclampsia.* Geneva, Switzerland: World Health Organization; 2011.
- Lindheimer MD, Taler SJ, Cunningham FG. Hypertension in pregnancy. *J Am Soc Hypertens.* 2008;2:484–494. doi: 10.1016/j.jash.2008.10.001.
- Regitz-Zagrosek V, Blomstrom Lundqvist C, Borghi C, et al. ESC guidelines on the management of cardiovascular diseases during pregnancy: the task force on the management of cardiovascular diseases during pregnancy of the European Society of Cardiology (ESC). *Eur Heart J.* 2011;32:3147–3197.
- Creasy RK, Robert R, Iams J, Lockwood C, Moore T, eds. *Creasy and Resnik's Maternal-Fetal Medicine: Principles and Practice.* 6th ed. Philadelphia, PA: Saunders Elsevier; 2009.
- American College of Obstetricians and Gynecologists. Task Force on Hypertension in Pregnancy. Hypertension in Pregnancy. ACOG Guidelines. 2013. <https://www.acog.org/Clinical-Guidance-and-Publications/Task-Force-and-Work-Group-Reports/Hypertension-in-Pregnancy>.
- Department of Health, Welsh Office, Scottish Home and Health Department, and Department of Health and Social Services, Northern Ireland. *Report on Confidential Enquiries into Maternal Deaths in the United Kingdom 1991–1993.* London, UK: HMSO; 1996.
- Baral-Grant S, Haque MS, Nouwen A, Greenfield SM, McManus RJ. Self-monitoring of blood pressure in hypertension: a UK primary care survey. *Int J Hypertens.* 2012;2012:582068. doi: 10.1155/2012/582068.
- Bray EP, Holder R, Mant J, McManus RJ. Does self-monitoring reduce blood pressure? Meta-analysis with meta-regression of randomized controlled trials. *Ann Med.* 2010;42:371–386. doi: 10.3109/07853890.2010.489567.
- National Clinical Guideline Centre (UK). *The Clinical Management of Primary Hypertension in Adults.* NICE Clinical Guidelines, No. 127. London, UK: Royal College of Physicians (UK); 2011.
- Naef RW III, Perry KG Jr, Magann EF, McLaughlin BN, Chauhan SP, Morrison JC. Home blood pressure monitoring for pregnant patients with hypertension. *J Perinatol.* 1998;18:226–229.
- Taylor RS, Freeman L, North RA. Evaluation of ambulatory and self-initiated blood pressure monitors by pregnant and postpartum women. *Hypertens Pregnancy.* 2001;20:25–33. doi: 10.3109/10641950109152639.
- Pickering TG, Miller NH, Ogedegbe G, Krakoff LR, Artinian NT, Goff D; American Heart Association; American Society of Hypertension; Preventive Cardiovascular Nurses Association. Call to action on use and reimbursement for home blood pressure monitoring: a joint scientific statement from the American Heart Association, American Society of Hypertension, and Preventive Cardiovascular Nurses Association. *Hypertension.* 2008;52:10–29. doi: 10.1161/HYPERTENSIONAHA.107.189010.
- Magee LA, von Dadelszen P, Chan S, et al. Women's views of their experiences in the CHIPS (Control of Hypertension in Pregnancy Study) Pilot Trial. *Hypertens Pregnancy.* 2007;26:371–387. doi: 10.1080/10641950701547549.
- Dehaeck U, Thurston J, Gibson P, Stephanson K, Ross S. Blood pressure measurement for hypertension in pregnancy. *J Obstet Gynaecol Can.* 2010;32:328–334. doi: 10.1016/S1701-2163(16)34476-0.
- National Clinical Guideline Centre (UK). *Hypertension: Clinical Management of Primary Hypertension in Adults.* NICE Clinical Guidelines, No. 127. London, UK: Royal College of Physicians (UK); 2011.
- Staessen JA, O'Brien ET, Amery AK, Atkins N, Baumgart P, De Cort P, DeGaut JP, Dolenc P, De Gaudemaris R, Enström I. Ambulatory blood pressure in normotensive and hypertensive subjects: results from an international database. *J Hypertens Suppl.* 1994;12:S1–S12.

25. Stergiou GS, Zourbaki AS, Skeva II, Mountokalakis TD. White coat effect detected using self-monitoring of blood pressure at home: comparison with ambulatory blood pressure. *Am J Hypertens*. 1998;11:820–827.
26. Schwartz JE, Burg MM, Shimbo D, Broderick JE, Stone AA, Ishikawa J, Sloan R, Yurgel T, Grossman S, Pickering TG. Clinic blood pressure underestimates ambulatory blood pressure in an untreated employer-based US population: results from the Masked Hypertension Study. *Circulation*. 2016;134:1794–1807. doi: 10.1161/CIRCULATIONAHA.116.023404.
27. Magee LA, Pelsa A, Helewa M, Rey E, von Dadelszen P; SOGCHypertension Guideline Committee. Diagnosis, evaluation, and management of the hypertensive disorders of pregnancy: executive summary. *J Obstet Gynaecol Can*. 2014;36:575–576. doi: 10.1016/S1701-2163(15)30533-8.
28. Whiting P RA, Reitsma JB, Bossuyt PM, Kleijnen J. The development of QUADAS: a tool for the quality assessment of studies of diagnostic accuracy included in systematic reviews. *BMC Med Res Methodol*. 2003;3:25.
29. Brown MA, McHugh L, Mangos G, Davis G. Automated self-initiated blood pressure or 24-hour ambulatory blood pressure monitoring in pregnancy? *BJOG*. 2004;111:38–41.
30. Chandiramani M, Boyce T, Waugh JJS. Is self blood pressure monitoring equivalent to clinic blood pressure monitoring in the hypertensive pregnant population?. *Hypertens Pregnancy*. 2006;25:167–167.
31. Lo C, Taylor RS, Gamble G, McCowan L, North RA. Use of automated home blood pressure monitoring in pregnancy: is it safe? *Am J Obstet Gynecol*. 2002;187:1321–1328.
32. Rey E, Morin F, Boudreault J, Pilon F, Vincent D, Ouellet D. Blood pressure assessments in different subtypes of hypertensive pregnant women: office versus home patient- or nurse-measured blood pressure. *Hypertens Pregnancy*. 2009;28:168–177. doi: 10.1080/10641950802233072.
33. Rey E, Pilon F, Boudreault J. Home blood pressure levels in pregnant women with chronic hypertension. *Hypertens Pregnancy*. 2007;26:403–414. doi: 10.1080/10641950701548000.
34. Sheehan E, Thilaganathan B, Bhide A, Khalil A. Evaluation of home monitoring of hypertension in pregnancy. *BJOG*. 2016;123(suppl 1):29–30.
35. Tucker KL, Taylor KS, Crawford C, et al. Blood pressure self-monitoring in pregnancy: examining feasibility in a prospective cohort study. *BMC Pregnancy Childbirth*. 2017;17:442. doi: 10.1186/s12884-017-1605-0.
36. Mooney P, Jaspar A, Cartwright W, Swindells HE, Dalton KJ. No difference between home and clinic blood pressure measurements in pregnancy: a computerized telemetric study. *J Perinat Med*. 1991;19:133–139.
37. Ishikuro M, Obara T, Metoki H, Ohkubo T, Yamamoto M, Akutsu K, Sakurai K, Iwama N, Katagiri M, Yagihashi K, Yaegashi N, Mori S, Suzuki M, Kuriyama S, Imai Y. Blood pressure measured in the clinic and at home during pregnancy among nulliparous and multiparous women: the BOSHI study. *Am J Hypertens*. 2013;26:141–148. doi: 10.1093/ajh/hps002.
38. Marko KI, Ganju N, Brown J, Benham J, Gaba ND. Remote prenatal care monitoring with digital health tools can reduce visit frequency while improving satisfaction. *Obstet Gynecol*. 2016;127(suppl 1). doi: 10.1097/01.AOG.0000483620.40988.df.
39. Aberg A. Diagnostic methods for pregnancy hypertension. Significance of standardized conditions. *Int J Technol Assess Health Care*. 1992;8(suppl 1):72–74.
40. Cartwright W, Dalton KJ, Swindells H, Rushant S, Mooney P. Objective measurement of anxiety in hypertensive pregnant women managed in hospital and in the community. *Br J Obstet Gynaecol*. 1992;99:182–185.
41. Chung Y, de Greeff A, Shennan A. Validation and compliance of a home monitoring device in pregnancy: microlife WatchBP home. *Hypertens Pregnancy*. 2009;28:348–359. doi: 10.1080/10641950802601286.
42. Denolle T, Daniel JC, Calvez C, Ottavio JN, Esnault V, Herpin D. Home blood pressure during normal pregnancy. *Am J Hypertens*. 2005;18(9 pt 1):1178–1180. doi: 10.1016/j.amjhyper.2005.03.736.
43. Denolle T, Weber JL, Calvez C, Getin Y, Daniel JC, Lurton O, Cheve MT, Marechaud M, Bessec P, Carbonne B, Razafintsalana T. Diagnosis of white coat hypertension in pregnant women with teletransmitted home blood pressure. *Hypertens Pregnancy*. 2008;27:305–313. doi: 10.1080/10641950802000950.
44. Hon EH, Fukushima T, Berumen M, Vargas N. Apparatus for home monitoring of pregnant hypertensive patients. *J Matern Fetal Med*. 1996;5:45–49. doi: 10.1002/(SICI)1520-6661(199601/02)5:1<45::AID-MFM11>3.0.CO;2-M.
45. Dalton KJ, Manning K, Roberts PJ, Dripps JH, Currie JR. Computerized home telemetry of maternal blood pressure in hypertensive pregnancy. *Int J Biomed Comput*. 1987;21:175–187.
46. Rayburn WF, Zuspan FP, Piehl EJ. Self-monitoring of blood pressure during pregnancy. *Am J Obstet Gynecol*. 1984;148:159–162.
47. Ross-McGill H, Hewison J, Hirst J, Dowswell T, Holt A, Brunskill P, Thornton JG. Antenatal home blood pressure monitoring: a pilot randomised controlled trial. *BJOG*. 2000;107:217–221.
48. Waugh J, Bosio P, Habiba M, Boyce T, Shennan A, Halligan A. Home monitoring of blood pressure in pregnancy at high risk of pre-eclampsia. *Eur J Obstet Gynecol Reprod Biol*. 2001;99:109–111.
49. Hodgkinson JA, Tucker KL, Crawford C, Greenfield SM, Heneghan C, Hinton L, Khan K, Locock L, Mackillop L, McCourt C, Selwood M, McManus RJ. Is self monitoring of blood pressure in pregnancy safe and effective? *BMJ*. 2014;349:g6616.
50. Ganzevoort W, Rep A, Bonsel GJ, de Vries JI, Wolf H. Plasma volume and blood pressure regulation in hypertensive pregnancy. *J Hypertens*. 2004;22:1235–1242.
51. Reinders A, Cuckson AC, Jones CR, Poet R, O'Sullivan G, Shennan AH. Validation of the Welch Allyn 'Vital Signs' blood pressure measurement device in pregnancy and pre-eclampsia. *BJOG*. 2003;110:134–138.
52. Natarajan P, Shennan AH, Penny J, Halligan AW, de Swiet M, Anthony J. Comparison of auscultatory and oscillometric automated blood pressure monitors in the setting of preeclampsia. *Am J Obstet Gynecol*. 1999;181(5 pt 1):1203–1210.
53. de Greeff A, Beg Z, Gangji Z, Dorney E, Shennan AH. Accuracy of inflationary versus deflationary oscillometry in pregnancy and preeclampsia: OMRON-MIT versus OMRON-M7. *Blood Press Monit*. 2009;14:37–40. doi: 10.1097/MBP.0b013e32831e305d.
54. De Greeff A, Reggiori F, Anthony J, Shennan AH. A validated algorithm for blood pressure measurement in pregnancy and pre-eclampsia: Microlife 3BTO-A vs microlife 3AC1. *Hypertens Pregnancy*. 2006;25:163.
55. Golará M, Benedict A, Jones C, Randhawa M, Poston L, Shennan AH. Inflationary oscillometry provides accurate measurement of blood pressure in pre-eclampsia. *BJOG*. 2002;109:1143–1147.
56. Reinders A, Cuckson AC, Lee JT, Shennan AH. An accurate automated blood pressure device for use in pregnancy and pre-eclampsia: the Microlife 3BTO-A. *BJOG*. 2005;112:915–920. doi: 10.1111/j.1471-0528.2005.00617.x.
57. Homuth V, Jüpnér A, Busjahn A, Rückert E, Reichert M, Faulhaber HD, Luft FC. [Clinical aspects and differential therapy of mild hypertension in pregnancy]. *Zentralbl Gynakol*. 1994;116:267–270.
58. Churchill D, Bevers DG. Differences between office and 24-hour ambulatory blood pressure measurement during pregnancy. *Obstet Gynecol*. 1996;88:455–461. doi: 10.1016/0029-7844(96)00192-5.

Novelty and Significance

What Is New?

- This study combined the currently available evidence on clinic and self-monitored blood pressure during pregnancy to consider thresholds for home monitoring.

What Is Relevant?

- There was little overall difference between self-monitored and clinic blood pressure readings, suggesting that appropriate thresholds for self-monitoring would be equivalent to clinic thresholds.

- White coat hypertension may be common toward the end of pregnancy, and more research is needed to assess the impact of this.
- More studies using monitors validated in pregnancy are needed.

Summary

Data from >750 pregnant women showed that there was little overall difference between self-monitored and clinic blood pressure readings. However, there were high levels of white coat hypertension toward the end of pregnancy.