

Liver sinusoidal endothelial cells - gatekeepers of hepatic immunity

Shetty, Shishir; Lalor, Patricia F; Adams, David H

DOI:

[10.1038/s41575-018-0020-y](https://doi.org/10.1038/s41575-018-0020-y)

License:

None: All rights reserved

Document Version

Peer reviewed version

Citation for published version (Harvard):

Shetty, S, Lalor, PF & Adams, DH 2018, 'Liver sinusoidal endothelial cells - gatekeepers of hepatic immunity', *Nature Reviews. Gastroenterology & Hepatology*. <https://doi.org/10.1038/s41575-018-0020-y>

[Link to publication on Research at Birmingham portal](#)

General rights

Unless a licence is specified above, all rights (including copyright and moral rights) in this document are retained by the authors and/or the copyright holders. The express permission of the copyright holder must be obtained for any use of this material other than for purposes permitted by law.

- Users may freely distribute the URL that is used to identify this publication.
- Users may download and/or print one copy of the publication from the University of Birmingham research portal for the purpose of private study or non-commercial research.
- User may use extracts from the document in line with the concept of 'fair dealing' under the Copyright, Designs and Patents Act 1988 (?)
- Users may not further distribute the material nor use it for the purposes of commercial gain.

Where a licence is displayed above, please note the terms and conditions of the licence govern your use of this document.

When citing, please reference the published version.

Take down policy

While the University of Birmingham exercises care and attention in making items available there are rare occasions when an item has been uploaded in error or has been deemed to be commercially or otherwise sensitive.

If you believe that this is the case for this document, please contact UBIRA@lists.bham.ac.uk providing details and we will remove access to the work immediately and investigate.

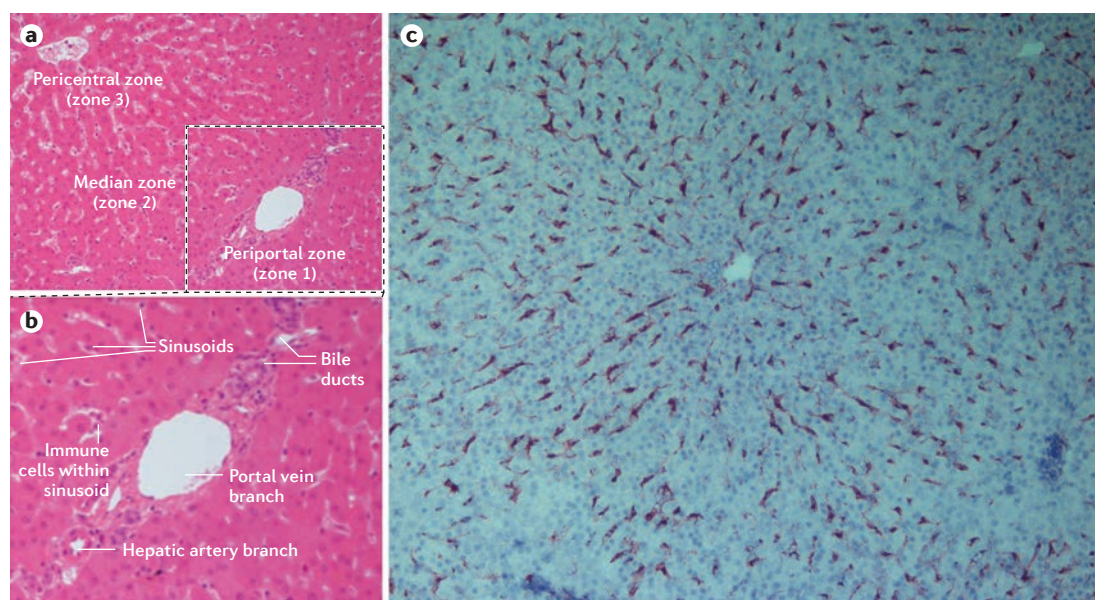
Author notes

Please check these figures carefully and return any comments/amendments that you might have to me as soon as possible. In particular, we would like you to check the following:

- Do the figures convey the intended message?
- Are all the labels accurate and in the right place?
- Are all the arrows in the right place?
- Are any chemical structures correct?
- Have shapes and colours been used consistently and accurately throughout the figures?
- Have any of the figures been previously published, or have they been supplied by a colleague(s) who is not a named author on the article?

To mark up any corrections, please use the commenting tools in the PDF, or print and draw by hand, rather than directly editing the PDFs.

Fig 1



d

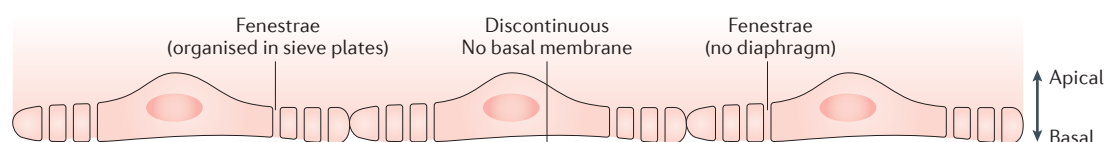
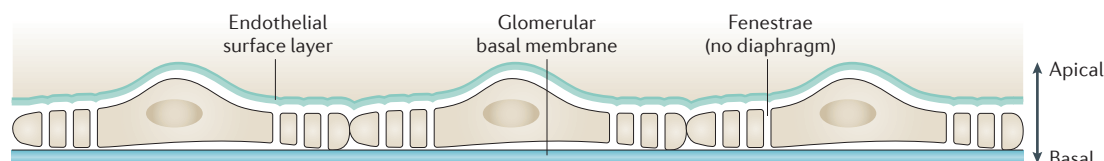
Fenestrated liver sinusoidal endothelial cells**Fenestrated glomerular endothelial cells**

Fig 2

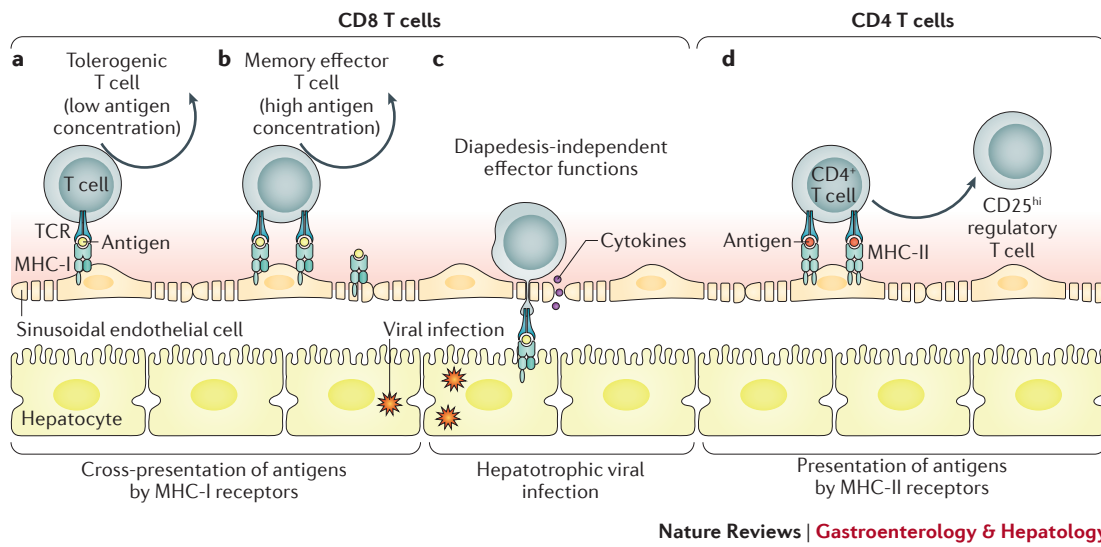


Fig 3

