

The influence of shot peening on the fatigue response of Ti-6Al-4V surfaces subject to different machining processes

Xu, Zhengkai; Dunleavy, J.; Antar, M.; Hood, R.; Soo, S.I.; Kucukturk, G.; Hyde, C. J.; Clare, A.T.

DOI:

[10.1016/j.ijfatigue.2018.02.022](https://doi.org/10.1016/j.ijfatigue.2018.02.022)

License:

Creative Commons: Attribution-NonCommercial-NoDerivs (CC BY-NC-ND)

Document Version

Peer reviewed version

Citation for published version (Harvard):

Xu, Z, Dunleavy, J, Antar, M, Hood, R, Soo, SL, Kucukturk, G, Hyde, CJ & Clare, AT 2018, 'The influence of shot peening on the fatigue response of Ti-6Al-4V surfaces subject to different machining processes', *International Journal of Fatigue*, pp. 196-207. <https://doi.org/10.1016/j.ijfatigue.2018.02.022>

[Link to publication on Research at Birmingham portal](#)

General rights

Unless a licence is specified above, all rights (including copyright and moral rights) in this document are retained by the authors and/or the copyright holders. The express permission of the copyright holder must be obtained for any use of this material other than for purposes permitted by law.

- Users may freely distribute the URL that is used to identify this publication.
- Users may download and/or print one copy of the publication from the University of Birmingham research portal for the purpose of private study or non-commercial research.
- User may use extracts from the document in line with the concept of 'fair dealing' under the Copyright, Designs and Patents Act 1988 (?)
- Users may not further distribute the material nor use it for the purposes of commercial gain.

Where a licence is displayed above, please note the terms and conditions of the licence govern your use of this document.

When citing, please reference the published version.

Take down policy

While the University of Birmingham exercises care and attention in making items available there are rare occasions when an item has been uploaded in error or has been deemed to be commercially or otherwise sensitive.

If you believe that this is the case for this document, please contact UBIRA@lists.bham.ac.uk providing details and we will remove access to the work immediately and investigate.

Accepted Manuscript

The influence of shot peening on the fatigue response of Ti-6Al-4V surfaces subject to different machining processes

Zhengkai Xu, J. Dunleavy, M. Antar, R. Hood, S.L. Soo, G. Kucukturk, C.J. Hyde, A.T. Clare

PII: S0142-1123(18)30064-1

DOI: <https://doi.org/10.1016/j.ijfatigue.2018.02.022>

Reference: JIJF 4587

To appear in: *International Journal of Fatigue*

Received Date: 18 December 2017

Revised Date: 12 February 2018

Accepted Date: 13 February 2018

Please cite this article as: Xu, Z., Dunleavy, J., Antar, M., Hood, R., Soo, S.L., Kucukturk, G., Hyde, C.J., Clare, A.T., The influence of shot peening on the fatigue response of Ti-6Al-4V surfaces subject to different machining processes, *International Journal of Fatigue* (2018), doi: <https://doi.org/10.1016/j.ijfatigue.2018.02.022>

This is a PDF file of an unedited manuscript that has been accepted for publication. As a service to our customers we are providing this early version of the manuscript. The manuscript will undergo copyediting, typesetting, and review of the resulting proof before it is published in its final form. Please note that during the production process errors may be discovered which could affect the content, and all legal disclaimers that apply to the journal pertain.



The influence of shot peening on the fatigue response of Ti-6Al-4V surfaces subject to different machining processes

Zhengkai Xu^a, J. Dunleavy^b, M. Antar^b, R. Hood^c, S.L. Soo^c, G. Kucukturk^{c,d}, C.J. Hyde^{a*}, A.T. Clare^a

^a Advanced Component Engineering Laboratory (ACEL), University of Nottingham, University Park, NG9 2SH, UK

^b Manufacturing Technology Centre, Pilot Way, Ansty Business Park, Coventry, CV7 9JU, UK

^c Machining Research Group, Department of Mechanical Engineering, School of Engineering, University of Birmingham, Edgbaston, Birmingham, B15 2TT, UK

^d Department of Mechanical Engineering, Faculty of Engineering, Gazi University, Maltepe, Ankara, Turkey

*Corresponding author: Christopher.Hyde@nottingham.ac.uk

Abstract

Machining processes are known to drastically impact the performance and lifetime of a component subjected to fatigue in service. Therefore, understanding the effect of manufacturing processes on surface integrity is vital to determine their suitability for any given application. As part of a wider study investigating multiple production operations, results are presented here which characterise the fatigue performance and failure mechanisms of Ti-6Al-4V specimens subject to conventional (end milling, surface grinding) and non-conventional machining processes (abrasive waterjet machining, wire electrical discharge machining, large area electron beam melting). Post process shot peening was then applied on each of the 5 different surfaces generated and the resulting fatigue response similarly evaluated. The abrasive waterjet machined specimens generally exhibited the longest fatigue life, particularly at higher applied stress (≥ 700 MPa) irrespective of surface condition. Despite the difference in process mechanisms, fatigue results for the milled and wire electrical discharge machined surfaces were comparable. Examination of the fatigue specimen fracture surfaces however, revealed that the locations of crack initiation were inconsistent for the different processes and conditions assessed. In general, post process shot peening increased the fatigue strength / life of all the evaluated specimens, regardless of the base machining operation.

Keywords: *titanium alloys, non-conventional machining, surface integrity, fatigue life, shot peening*

1. Introduction

Machining strategy can significantly influence the resulting workpiece surface condition/integrity, which has a direct bearing on component fatigue properties and therefore the viability of the material/component in service. Achieving appropriate surface integrity (SI) is imperative particularly for high-value or safety critical parts such as those in the aerospace industry, which have extremely stringent tolerance and quality requirements. Field et al. [1] were the first to introduce an approach for assessing workpiece surface integrity by correlating the effect of surface changes/alterations produced after machining against a range of mechanical properties and metallurgical characteristics (e.g. surface finish, micro hardness, microstructure, residual stress, fatigue performance), which were classified into 3 levels of 'data sets'. While this provided a useful guideline for the academic research community, aerospace companies tend to employ internal/proprietary surface integrity criteria tailored specifically to their individual acceptance standards [2]. Considerable research has been carried out on assessing the influence of machining operations on workpiece SI of aerospace materials, some of which have been summarised in a recent review publication [3] as well as in several CIRP keynotes focussed on conventional cutting [4] and abrasive machining/grinding [5] processes. However, there are comparatively limited numbers of contributions that consider more complex SI parameters such as fatigue performance (as the trials are generally costly and time-consuming to perform), which is a critical concern to the aerospace industry. According to Bhaumik et al. [6], approximately 60% of the total in-service failures in aerospace components are caused by fatigue.

Non-conventional machining methods involving energy beams (such as laser and electron beams) or plasma sources where the mechanism of material removal is not based on mechanical shearing have attracted increasing interest from the aerospace industry in recent years as alternatives to traditional techniques for machining high strength aerospace materials. However, their deployment is still somewhat limited due largely to the thermal nature of such processes which are known to induce adverse workpiece integrity effects such as recast layer formation and heat affected zones, thereby impacting on performance in service [7]. Therefore, in the context of aerospace part manufacture, it is necessary to better study and compare the effects of different machining processes on component fatigue performance as such data is not currently evident in the literature.

Milling and grinding are two of the most established conventional machining operations utilised in the fabrication of aero-engine components as they are mechanical deformation based processes that typically induce compressive residual stress regimes in the workpiece material and hence more likely to produce favourable

fatigue performance. In a study by Yao et al. [8], the influence of milling on fatigue performance of a TB6 titanium alloy was investigated. Reducing workpiece surface roughness (R_a) from 1.64 μm to 0.67 μm was shown to improve the specimen's fatigue life by 43.22%. In a similar study by Moussaoui et al. [9] involving milling of Ti-6Al-4V specimens, surface roughness (R_a) however was not found to have a significant influence on fatigue life, as the residual stress generated was the dominant factor in determining fatigue performance (as the residual stress varied from a neutral condition to -264 MPa, the number of cycles to failure increased by 2.5 times). Rangaswamy et al. [10] studied the grinding of Ti-5Al-2.5Sn alloy in both dry and wet conditions. The dry ground (without lubricants) workpieces exhibited lower fatigue strength than the un-machined materials, with fatigue life decreasing with the increase of cutting speed. In contrast, wet grinding (with lubricants) increased the materials' fatigue performance when compared with non-ground materials. In conventional machining processes, a 'white layer' is occasionally observed when inappropriate machining conditions are applied, which can appear white and featureless under an optical microscope after etching of the workpiece specimen cross section with an appropriate chemical reagent. Guo et al. [11] reported that the presence of a white layer following hard turning and surface grinding of AISI 52100 steel led to a 7.6 fold reduction in fatigue life due to detrimental tensile residual stresses of up to ~2000 MPa generated within the white layer.

In addition to standard cutting operations, an abrasive waterjet (AWJ) can be applied as a surface treatment technique [12] where the process erodes and deforms the near surface of the workpiece, subsequently introducing compressive residual stresses in the subsurface as a result of the associated peening effect. Thus, similar to the condition found in the study by Moussaoui et al. [9], an enhancement of fatigue resistance can be expected. In work by Arola et al. [13], AWJ peened AISI 304 stainless steel and Ti-6Al-4V titanium alloy workpieces demonstrated considerable improvement in fatigue resistance compared to non-surface treated specimens, with 10% and 25% increase in endurance strength respectively.

In large area electron beam melting (LAEBM), the kinetic energy of an incident electron beam is applied to achieve fine polishing of metal surfaces [14]. Previously, several similar processes were studied to enhance workpiece surface integrity. Proskurovsky et al. [15] applied pulsed electron-beam to modify the surfaces of several popular materials, which include titanium alloys (BT8M and BT18Y) as well as aluminium alloys (Al2024 and Al6061). In all cases, resultant workpiece microhardness, wear and corrosion resistance together with fatigue strength were significantly improved. Particularly, the fatigue resistance of the EB-treated titanium alloy was almost doubled when compared against corresponding untreated specimens. Okada et al. [16] applied

LAEB irradiation as a final surface finishing process of Ti-6Al-4V specimens and found that surface roughness (R_a) was reduced from 20 μm to 3 μm . Furthermore, both hardness and corrosion resistance were improved after the finishing treatment. According to Farayibi et al. [17], the surface enhancement function of pulsed electron beam irradiation is also applicable for the surface preparation of laser additive manufactured structures.

Wire electrical discharge machining (WEDM) applies discrete electrical discharges which are generated between a current carrying wire (tool electrode) and workpiece across a dielectric medium. This causes the material in close proximity of the wire to melt and vaporise. A principal advantage of WEDM is that its performance is not constrained by the workpiece material's hardness, mechanical strength or toughness [18]. The effects of EDM on workpiece surface integrity have been widely studied. A review by Kumar et al. [19] highlighted that almost all of the process parameters applied in EDM can have a marked difference in the thickness of the damaged surface layers. Gökler and Ozanözgü [20] studied the effects of cutting parameters on surface roughness in the WEDM process of three different ferrous alloys (1040, 2379 and 2738 steel), where a method to determine the proper parameter combinations for the desired roughness was demonstrated. Mower [21] reported a 15% to 30% decrease in the fatigue life of WEDM machined Ti-6Al-4V specimens compared to conventionally milled surfaces, which was attributed to the presence of a recast layer in the former. Developments in EDM generator technology over the past decade involving control of ultrahigh frequency (> 1 MHz) and short duration pulses have enabled significant improvement in WEDM process capability, particularly with respect to minimising/eliminating adverse recast layer formation and related surface/subsurface damage.

Aspinwall et al. [22] evaluated the performance of modern 'minimum damage' WEDM systems when machining 10 mm thick Inconel 718 nickel based superalloy and Ti-6Al-4V titanium alloy by utilising a multiple cut strategy comprising a series of roughing and finishing/trim passes. Initial recast layer thickness of 6–11 μm following the roughing operation was found to decrease essentially to zero on both materials after 4 successive trim passes. Furthermore, variation in workpiece microhardness was marginal with no discernible heat affected zones, suggesting that any residual thermal damage was minimal. Similar trials were undertaken by Antar et al. [23] on alternative nickel (Udimet 720) and titanium (Ti-6Al-2Sn-4Zr-6Mo/Ti6246) alloy workpieces. Average recast layer thickness was < 2 μm after the 4th trim cut, although minor reductions in subsurface microhardness ($\sim 10\%$ below bulk value) extending to a depth of ~ 30 μm was recorded in both materials. Subsequent modification of the discharge pulse profile and associated electrical parameters produced

equivalent low levels of damage but which was achieved with only 2 trim cuts (after the roughing pass), together with near neutral surface residual stress and surface roughness not exceeding $0.6 \mu\text{m Ra}$ [24]. Additionally, high cycle fatigue performance of both the Udimet 720 [25] and Ti6246 [26] workpieces machined using the updated WEDM parameters were found to be within $\sim 10\%$ of corresponding high speed milled specimens. Alias et al. [27] analysed the effects of machine feed rate when WEDM of Ti-6Al-4V using brass wire. The results showed that the kerf width decreased with increasing feed rate while conversely, both material removal rate and resulting R_a (surface roughness) understandably exhibited rising trends. In research reported by Klocke et al. [28], the differences in fatigue strength and other surface conditions caused by grinding and WEDM were considered. The results showed that although ground specimens had lower surface roughness, the WEDM workpieces possessed better fatigue strength.

In order to improve workpiece surface integrity following machining operations, shot peening has been evaluated by a number of researchers as a post-processing method to increase fatigue resistance by introducing compressive residual stresses in the surface layer [29]. Work by Jiang et al. [30] and Takahashi and Sato [31] demonstrated that shot peened Ti-6Al-4V surfaces possessed superior fatigue resistance compared to specimens without post-processing treatment. In the former study, shot peening was performed at both room and elevated temperatures (150°C) with resulting fatigue limits of the treated specimens found to increase by 9% and 10% respectively, compared to the untreated specimens. Applying a second series of shot peening (re-shot peening) after completing 50% of the estimated fatigue loading cycles was revealed to be a potential method to further augment fatigue life [30]. Similarly, the investigation by Takahashi and Sato [31] indicated that the specimens' fatigue limits increased by 25% following shot peening as opposed to the non-treated test pieces.

The present paper aims to compare the fatigue performance of Ti-6Al-4V surfaces produced using various conventional and non-conventional machining processes. The influence of post process shot peening was also investigated together with an analysis of workpiece fractography.

2. Experimental test methodology

2.1. *Overview*

The experimental strategy employed is shown in Fig. 1. Five subtractive (end milling, surface grinding, AWJ, WEDM, LAEBM) based surface preparation methods were evaluated and applied to produce the test specimens used in this study. Half of the specimens were subsequently subjected to post-process shot peening, which was

carried out by Sandwell UK. The Almen strip test procedure, as defined by SAE standard J442 [32], was used to ascertain the peening intensity while the coverage was determined by the exposure time. The intensity describes the induced curvature of a flat standardised strip (the Almen strip) when the peening process is performed on it. The shot peening operation involved two stages, each utilising a defined media and peening intensity as shown in Table 1. Both sets of specimens (with and without post-processing) were then fatigue tested and the results analysed.

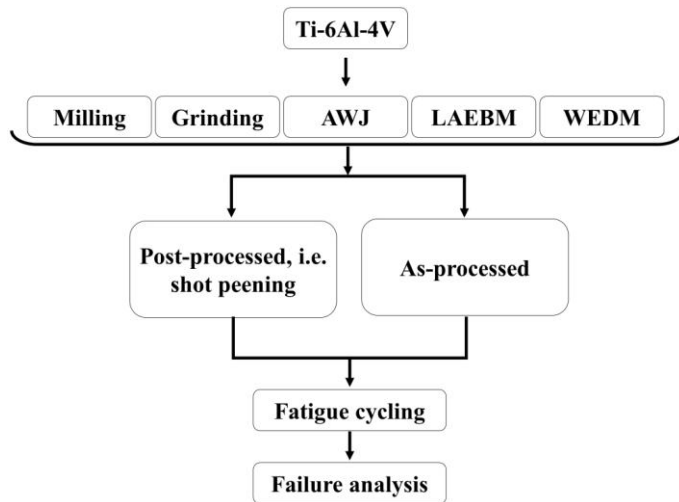


Fig. 1 Experimental strategy

Table 1 Shot-peening strategy

	Media: ASH110 (0.011") cast steel shot
Stage 1	Intensity: 0.0075" Almen A. Coverage: 100%
	Media: 75-150 μm glass bead
Stage 2	Intensity: 0.005" Almen N Coverage: 100%

2.2. Specimen preparation

The fatigue test specimens for the machining processes were made from Ti-6Al-4V supplied by All Metal Services Ltd. and prepared in line with the route described in Fig. 2. Rectangular blanks were initially cut from a

larger block of material and the faces ground down to the dimensions as shown in Fig. 2(a). The test surface of the specimens was then produced by reducing the height of the blanks from 13 to 10 mm as shown in Fig. 2(b), using each of the individual machining processes according to the corresponding parameters detailed in Table 2. The selected parameter levels are representative of finishing conditions for the respective processes. The sharp longitudinal edges/corners bordering the primary evaluation surface were then machined using a special 1 mm radius milling tool to negate any edge concentration effects during fatigue testing, see Fig. 2(c). The parameters utilised for the radiusing operation was a cutting speed of 80 m/min, feed rate of 0.1 mm/rev and depth of cut of 0.1 mm.

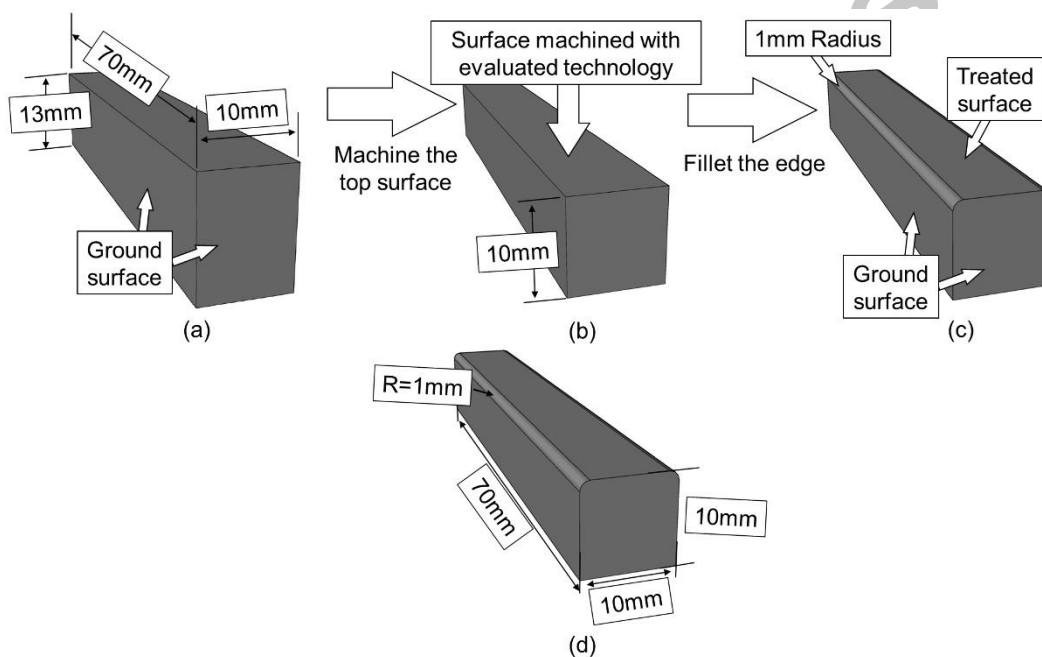


Fig. 2 Preparation route of machined fatigue test specimens, (a) rectangular blanks, (b) machining of the test surface, (c) radiusing of specimen edges and (d) the exact dimensions of the specimens.

Table 2 Operating parameters employed for the machining processes evaluated

Machining process	Machining process parameters
Milling	Cutting speed = 80 m/min
	Feed-rate = 0.1 mm/rev
	Depth of cut = 0.1 mm
	Tool: 10 mm diameter end mill (4 fluted)
	Cutting environment = Water based emulsion (15 bar)
Surface grinding	Grinding speed = 30 m/s
	Feed-rate = 400 mm/min
	Depth of cut = 6 μ m per pass
	Wheel rotational speed = 3750 rpm
	Wheel abrasive = SiC
	Cutting environment = Flood coolant
AWJ	Pressure = 1000 bar
	Stand-off = 100 mm
	Relative grit feed = 4/9
	Speed = 4000 mm/min
	Abrasive particles = Garnet
LAEBM	Cathode voltage = 40 kV
	No. of shots = 20
WEDM	Voltage = 80 V
	Ignition current = 5 A
	Pulse off-time = 8 μ s
	Pulse on-time = 0.7 μ s
	Dielectric = Deionised water

2.3. *Fatigue testing procedure*

The areal surface roughness (S_a) of all specimens was measured with an Alicona Infinite Focus microscope prior to test commencement. The three-point flexure fatigue test was carried out using an RUMUL Testronic machine. All tests were undertaken at room temperature ($20 \pm 2^\circ\text{C}$). Specimens were tested using a three-point bending arrangement, as shown in Fig. 3, with a loading frequency of between 80-82 Hz. Several preliminary trials were carried out to determine the appropriate mass (inertia) for the oscillating components of the test machine in order to ensure that the correct load frequency (~ 80 Hz) is consistently applied during the fatigue experiments.

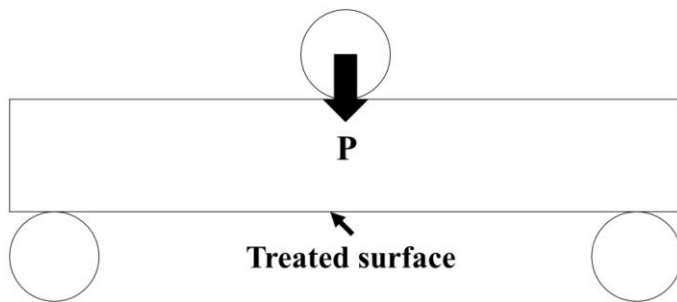


Fig. 3 Three-point flexure fatigue testing arrangement schematic

Stresses induced were calculated using the bending relationship outlined in Equation 1 [33]:

$$\sigma_{max} = \frac{3 \cdot P_{max} \cdot L}{2 \cdot b \cdot t^2}$$

Equation 1

where σ_{max} is the maximum stress level, P_{max} is the maximum applied load, L is the distance between supports, b is the specimen width and t is specimen thickness. As the results presented are a ranking/comparison of the as-received samples to the shot peened samples, no correction factor has been applied to this equation. All samples were tested under the sample conditions (geometry, load, etc.).

The stress ratio (R), which is defined as the minimum stress applied divided by the maximum applied stress was set to 0.1 based on a study conducted to examine the effect of load ratio on stress intensity in Ti-6Al-4V [34] and to enable comparison of the current work with other similar investigations. Fatigue testing parameters employed are shown in Table 3. For each stress level, 3 tests were carried out.

Table 3 Fatigue testing parameters (R=0.1)

No.	Maximum stress /MPa	Mean stress /MPa	Minimum stress /MPa	Amplitude /MPa
1	900	495	90	405
2	800	440	80	360
3	700	385	70	315
4	600	330	60	270
5	475	261.25	47.5	213.75

A Nikon ECLIPSE LV100ND microscope was applied to check the as-processed and post-processed surfaces. A Hitachi SEM TM3030 and Nikon Stereo Microscope was used to image the shot peened and fractured specimen surfaces. All of the micrographs presented in the following sections were from tests undertaken at 800 MPa.

3. Results

The specimens, upon testing, deformed towards one fixed direction as shown in Fig. 4. There exists a neutral axis along which the stress is zero. The compressive and tensile stress zones are located next to the neutral axis as shown in Fig. 4. The stress distribution in tested specimens is explained in Fig. 5. The stress changed from tensile gradually to compressive, with the largest stress magnitude at the midpoint of treated surface. This is therefore expected to be the origin of fracture [33]. Apart from the treated surface, all the other faces were ground and should possess similar fatigue resistance.

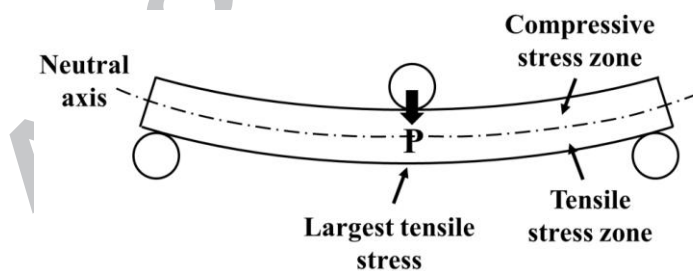


Fig. 4 The specimen's profile during fatigue testing

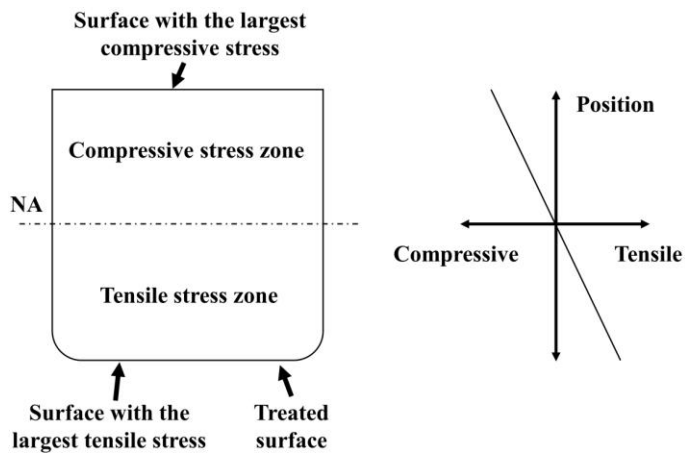


Fig. 5 Stress distribution in the cross section of tested specimen

The basic surface response of the treated specimens before (as-processed) and after (post-processed) shot peening is shown in Fig. 6. In general, post-processing significantly affected the surface appearance in all cases. The distinct surface features/topography produced by the different machining techniques were partially or totally eliminated by shot peening. Table 4 lists the typical surface roughness results due to each process and following shot peening.

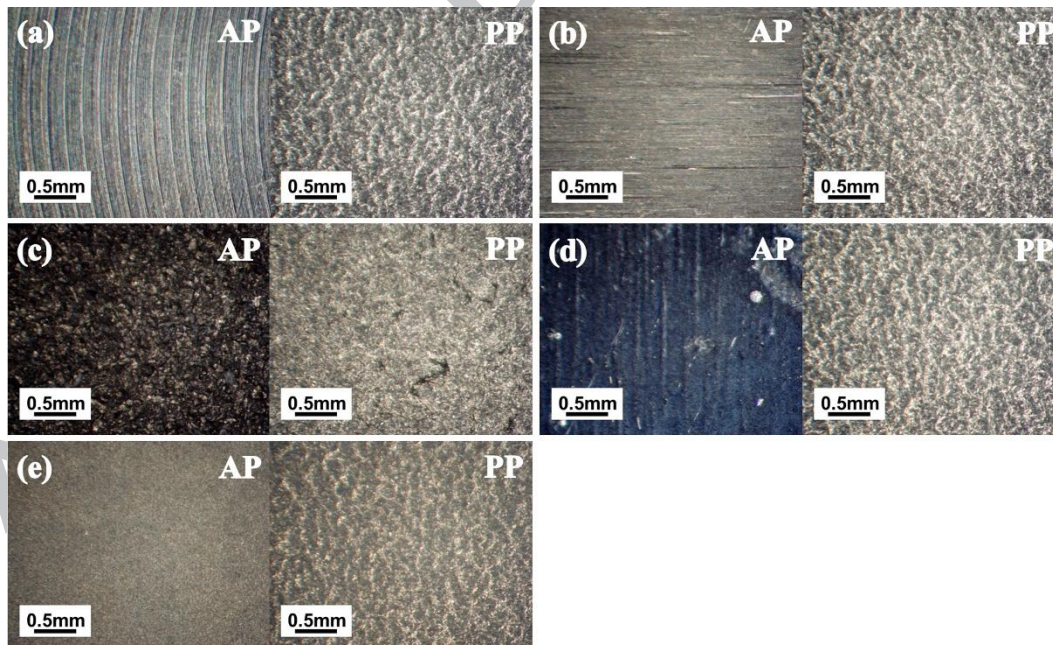


Fig. 6 The basic surface response of (a) milled, (b) ground, (c) AWJ, (d) LAEBM and (e) WEDM specimens, in which AP stands for as-processed, PP indicates post-processed

Table 4 Surface roughness (Sa) of the as-processed and post-processed specimens

Sa (μm)	Milling	Grinding	AWJ	LAEBM	WEDM
AP	1.23	1.38	10.93	1.88	0.47
PP	1.74	1.72	6.13	1.87	1.53

Fig. 7 shows the fracture surfaces of treated specimens after fatigue testing. Crack progression marks can be clearly seen in all of the specimens. The distance between the fracture initiation sites and the treated surface are listed in Table 5.

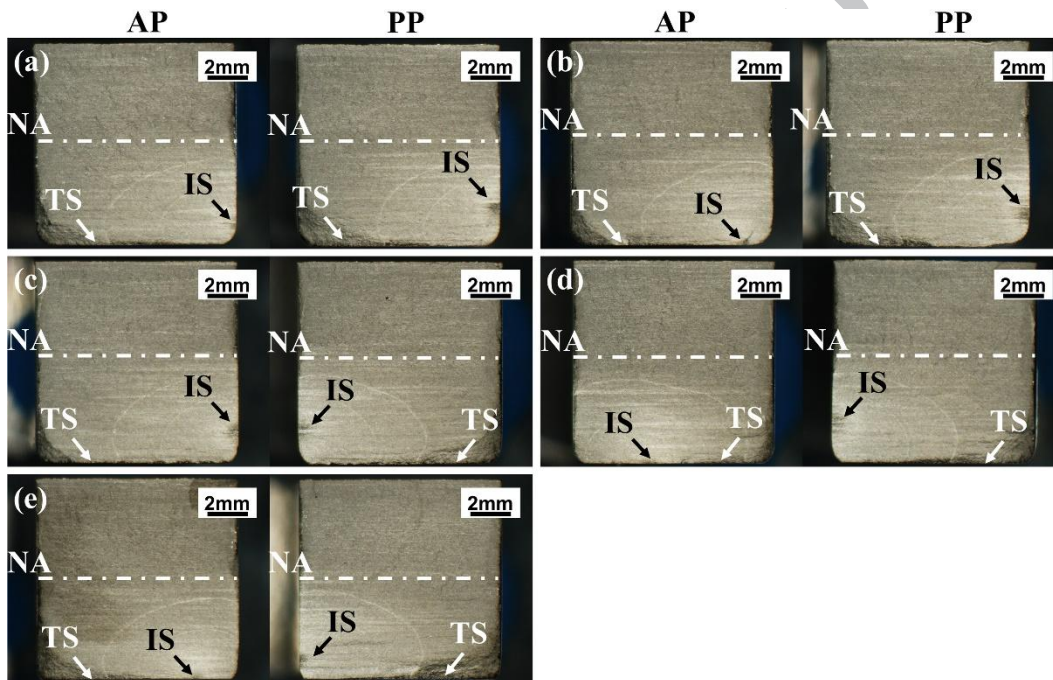


Fig. 7 Fracture surfaces of fatigue tested (a) milled, (b) ground, (c) AWJ, (d) LAEBM and (e) WEDM specimens, where IS indicates fracture initiation site, TS indicates treated surface

The results shown in Fig. 7 indicate that the fracture initiation site is not consistently on the treated surface but sometimes closer to the neutral axis on the side face of the specimens. This is an indication of the enhancement in mechanical properties (fatigue strength of the material) due to the surface treatment, particularly in the case of the milled and AWJ workpieces. Therefore, despite being at a position of lower applied stress, failure initiated on the untreated side edge of the material instead of the treated surface (where the stress was higher).

Furthermore, this behaviour was evident in all of the post process shot peened specimens, irrespective of the initial machining operation.

Table 5 Location of fracture initiation sites in the evaluated specimens (as shown in Fig. 7) and the distance between the treated surface and the initiation sites position on the side surface

Specimens	AP	PP
Milled	Side surface: ~870 μ m	Side surface:~1800 μ m
Ground	Treated surface	Side surface:~1300 μ m
AWJ	Side surface:~1530 μ m	Side surface:~1670 μ m
LAEBM	Treated surface	Side surface:~2100 μ m
WEDM	Treated surface	Side surface:~1000 μ m

3.1. *S-N curves*

Fig. 8 shows the S-N curves of all tested specimens. Apart from the main (primary) logarithmic axis, a secondary Y-axis has been included to show the absolute stress value equivalent to the values shown on the primary axis. Results from regression analysis (BS 2864, 1976 and ASTM E-739-91, 2004) were also incorporated to offer insight into the quality of the perceived linear relationship. These graphs can be used to predict performance at other stress levels within the linear region and are thus useful to design engineers. Fatigue run-out was set at 1,000,000 cycles to shorten the overall experimental time. The run-out data showed in Fig. 8 were excluded from the regression computations, as the trend lines were only intended to describe the S-N region between low-cycle fatigue and eventual run-out. A description of the run-out tests in each category are given in Table 6. Included in Fig. 8 are the respective equation of linear regression and the associated coefficient of determination (R^2), which indicates the relative strength of the linear relationship between the variables. As a negative correlation is expected for such relationships, only the absolute values are displayed on the graphs. Correlations (R^2) greater than 0.8 in value are generally considered strong, whereas values less than 0.5 are deemed to be weak. Equations and coefficients of determination for the as-processed groups are listed on the bottom left of the graphs, while the post-processed equivalents can be found on the top right corners. As shown in Fig. 8, an obvious improvement in fatigue performance can generally be observed due to post-processing. The LAEBM specimens, however, demonstrated a more notable rise in fatigue resistance since there doesn't appear

to be any significant overlap between the data of the as-processed and post-processed conditions, whereas the benefit of post-processing on milled and AWJ specimens in particular was less pronounced.

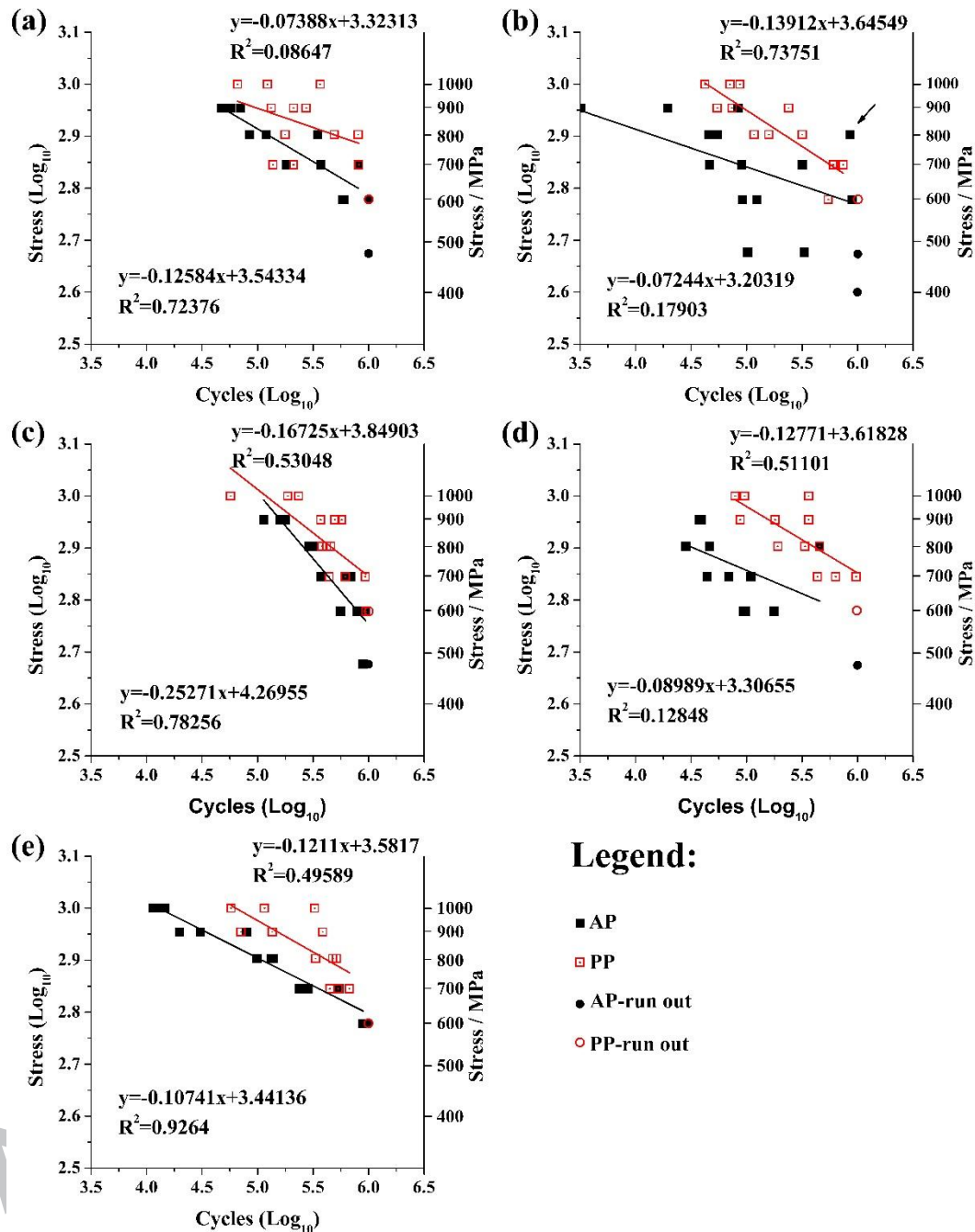


Fig. 8 Log-scale S-N curves following fatigue testing of (a) milled, (b) ground, (c) AWJ, (d) LAEBM and (e) WEDM specimens

There are some data points within, for example, the as-processed data at 800MPa shown in Fig. 8(b), which are suspect due to their deviation from the data set. However, according to Chauvenet's Criterion [35], used for

assessing suspect results, these data points are within a reasonable range. A particularly suspect example, highlighted in Fig. 8(b), has been evaluated as follows:

The three measurements (in Log_{10} form) of cycles to failure at 800MPa are 4.659, 4.733 and 5.933. The value of 5.933, highlighted in Fig. 8(b), is much larger than the other two and is therefore a suspect measurement (x_{sus}). The mean (\bar{x}) and standard deviation (σ_x) of these measurements are 5.109 and 0.715, respectively. Based on the calculation process provided by Chauvenet's Criterion [35], the measure of difference (t_{sus}) between the suspect value 5.933 and the mean value of 5.109 is:

$$t_{sus} = \frac{|x_{sus} - \bar{x}|}{\sigma_x} = \frac{|5.933 - 5.109|}{0.715} = 1.15$$

Equation 2

Referring to the Normal Error Integral table [35], in this case, the probability ($Prob(\text{outside } t_{sus}\sigma)$) that a measurement will differ from \bar{x} by $t_{sus}\sigma_x$ or more is:

$$Prob(\text{outside } 1.15\sigma) = 1 - prob(\text{within } 1.15\sigma) = 1 - 0.7499 = 0.25$$

Equation 3

Therefore, for the 3 measurements at this stress level, the expected number (n) of measurements which will be as deviance as 5.933 is:

$$n = 3 \times Prob(\text{outside } 1.15\sigma) = 3 \times 0.25 = 0.75$$

Equation 4

Since 0.75 is bigger than 0.5 set by Chauvenet's Criterion [35], which indicates three-fourth of a measurement will be as deviance as the suspect value 5.933, it is reasonable.

Table 6 Descriptions of the run-out tests in each category

	AP	PP
Milled	3 tests at 475 MPa, 1 tests at 600 MPa	3 tests at 600 MPa
Ground	3 tests at 400 MPa, 1 tests at 475 MPa	3 tests at 600 MPa
AWJ	3 tests at 475 MPa	2 tests at 600 MPa

LAEBM	3 tests at 475 MPa	3 tests at 600 MPa
WEDM	2 tests at 600 MPa	3 tests at 600 MPa

The comparison of fatigue strength due to the different machining processes prior to and following shot-peening is detailed in Fig. 9. A considerable spread in fatigue performance was evident between the different production methods in the as-processed condition, with the number of cycles to failure ranging between ~18,000 and ~280,000 at a maximum applied stress of 800 MPa, see Fig. 9(a). The variability in fatigue life amongst the different processing techniques, however, was significantly reduced following shot peening as shown in Fig. 9(b), coupled with an enhancement of fatigue strength in all cases. The AWJ machined specimens possessed the best fatigue resistance particularly at high applied stress levels (≥ 700 MPa). A further observation was that the as-processed milled and WEDM specimens generally displayed similar fatigue response characteristics, with superior run-out levels compared to the other processes. While with the decreasing of applied stress, the failure cycles of all specimens become similar.

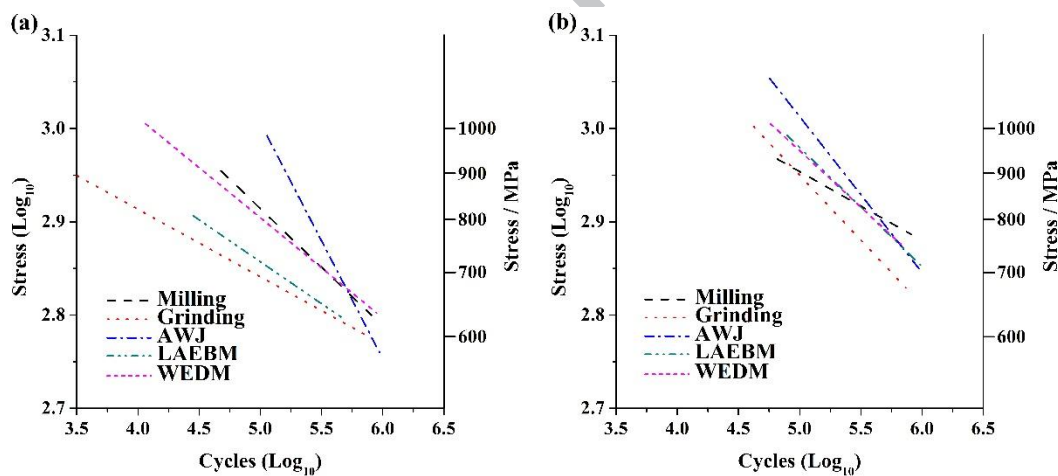


Fig. 9 S-N curve sections for all (a) as-processed and (b) post-processed specimens

3.2. *Fractography*

Fig. 10 shows SEM images of the fracture surfaces in the milled specimens. Initiation sites originated at the side face in both the as-processed and post-processed specimens. Failure in the as-processed specimen occurred near the interface of the radiused corner and side face of the specimen, see Fig. 10(a), while the corresponding location of crack initiation in the post-processed specimen was approximately 1 mm further away from the

treated surface as depicted in Fig. 10(b). Faint progression marks were visible, which suggests variation in the rate of fatigue crack growth. Fig. 11 shows high magnification SEM micrographs of fracture initiation sites in the milled specimens. Large secondary cracks (longer than $50\ \mu\text{m}$) were seen in the as-processed specimen, while those present in the post-processed specimen were considerably smaller / shorter (less than $20\ \mu\text{m}$). This suggests that shot peening served to reduce the development of cracks. Fatigue striations were also evident in the high magnification images, which indicate the fracture propagation within these specimens.

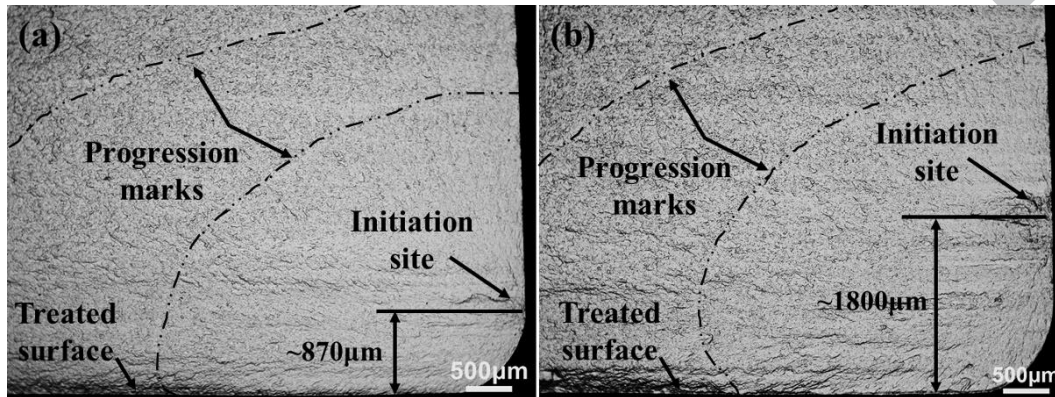


Fig. 10 Fracture surfaces in the milled (a) as-processed and (b) post-processed specimens

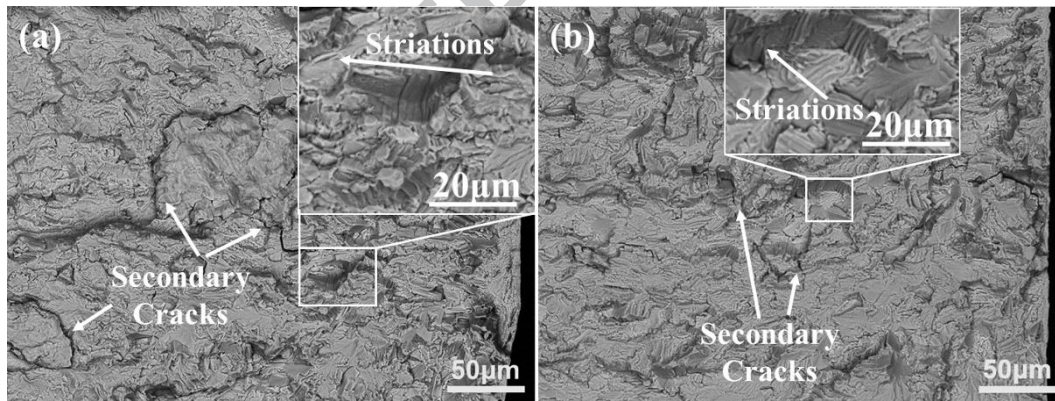


Fig. 11 High magnification SEM images of fracture initiation sites in the milled (a) as-processed and (b) post-processed specimens

Fig. 12 shows the fracture initiation sites in the AWJ specimens. In both as-processed and post-processed conditions, the cracks initiated at the side faces of the fatigue specimens at a distance of about 1.6 mm from the AWJ treated surfaces. Progression marks were similarly observed in these specimens. More detailed SEM images of the fracture initiation sites are shown in Fig. 13, which indicate comparable fracture conditions between the as-processed and post-processed AWJ specimens. As with the milled specimens, striations were

seen in the fractured surfaces denoting the directions of damage propagation. No other signs of flaws were detected in either of the AWJ specimens other than the appearance of several small cracks. This was possibly due to the effects of compressive residual stresses most likely imposed by the AWJ operation are more effective compare to that of shot peening.

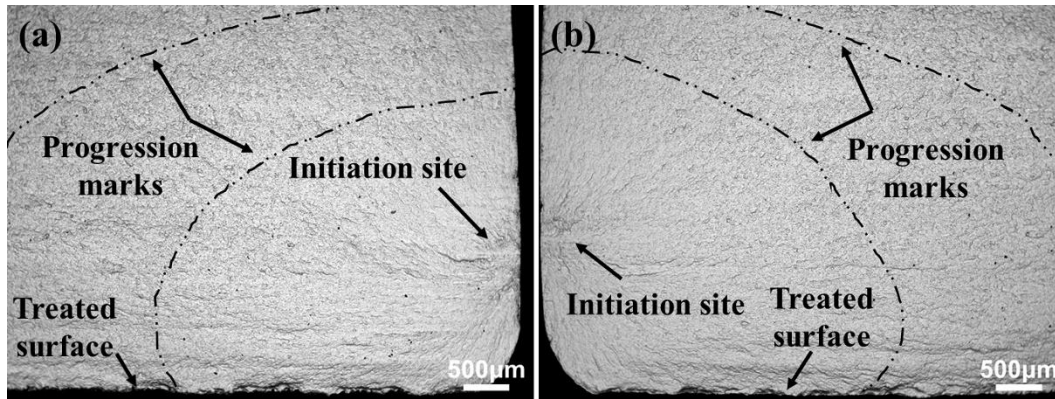


Fig. 12 Fracture surfaces of AWJ (a) as-processed and (b) post-processed specimens

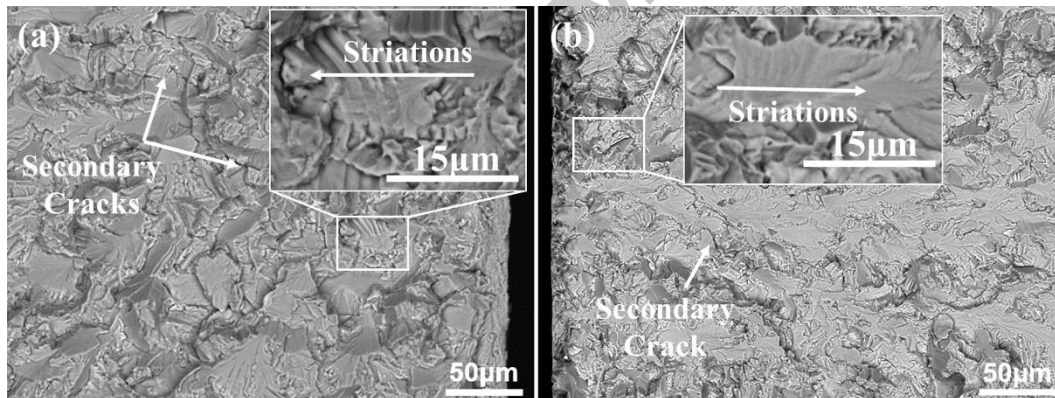


Fig. 13 High magnification SEM images of fracture initiation sites in the AWJ (a) as-processed and (b) post-processed specimens

Fig. 14 details the fracture surfaces of the ground, LAEBM and WEDM processed specimens. All 3 as-processed specimens showed failure initiating on the machined surfaces, see Fig. 14(a), (c) and (e), while the corresponding shot-peened specimens in Fig. 14(b), (d) and (f) showed fracture commencing from the side faces. In the high-resolution SEM images, small secondary cracks can be seen in the as-processed specimens as shown in Fig. 15(a) and (c), while fewer cracks appeared in Fig. 15(e). Conversely in the post-processed specimens, several large cracks appeared in the WEDM processed specimen as shown in Fig. 15(f). All fracture initiation sites are again moving opposite to the treated surfaces and possess fracture patterns similar to those

found in the milled specimens (Fig. 11(b)). The fatigue striations highlighted in Fig. 15 indicate the direction of fracture propagation in these specimens.

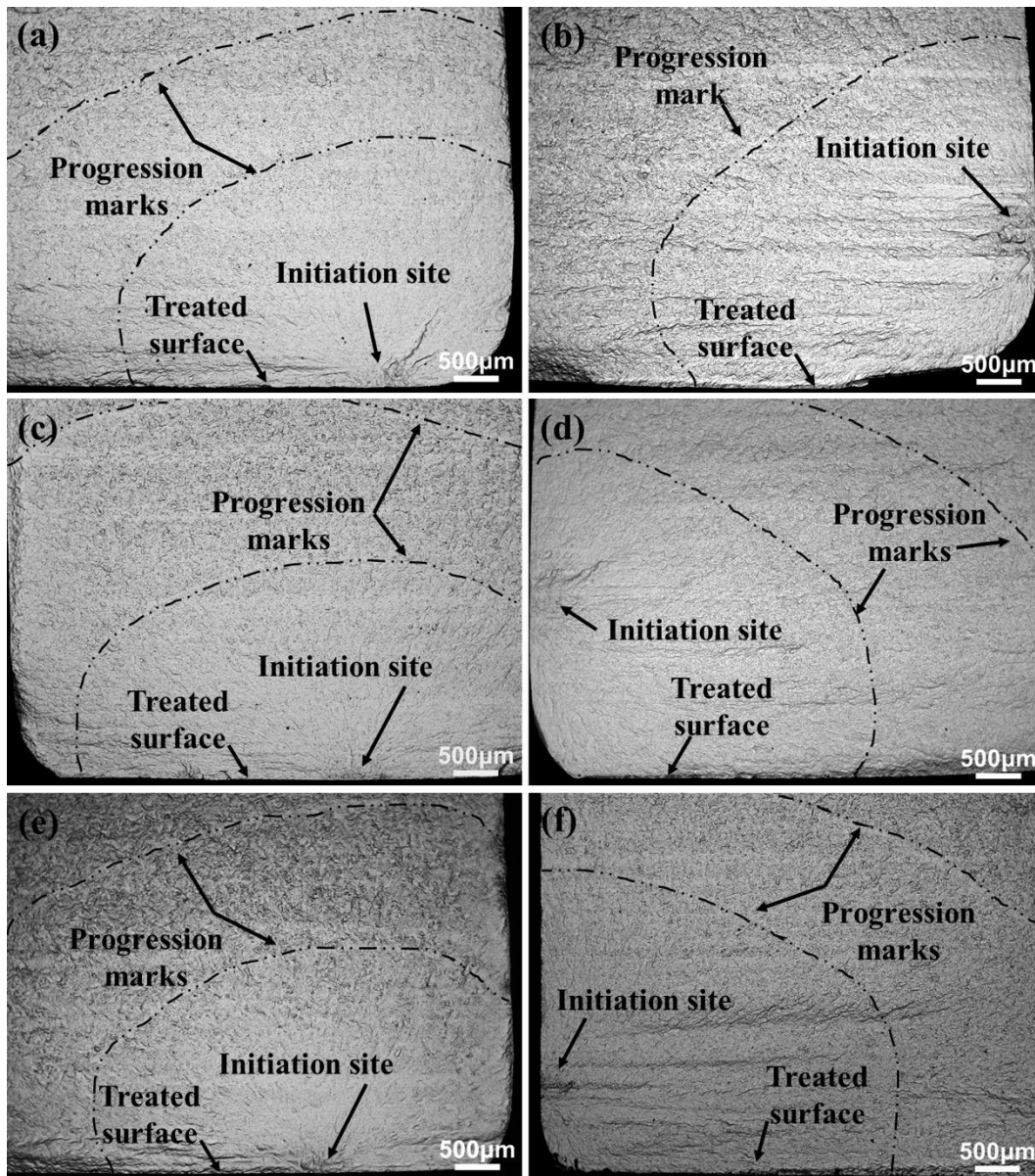


Fig. 14 The fracture surfaces in the as-processed and post-processed (a) (b) ground, (c) (d) LAEBM and (e) (f) WEDM specimens

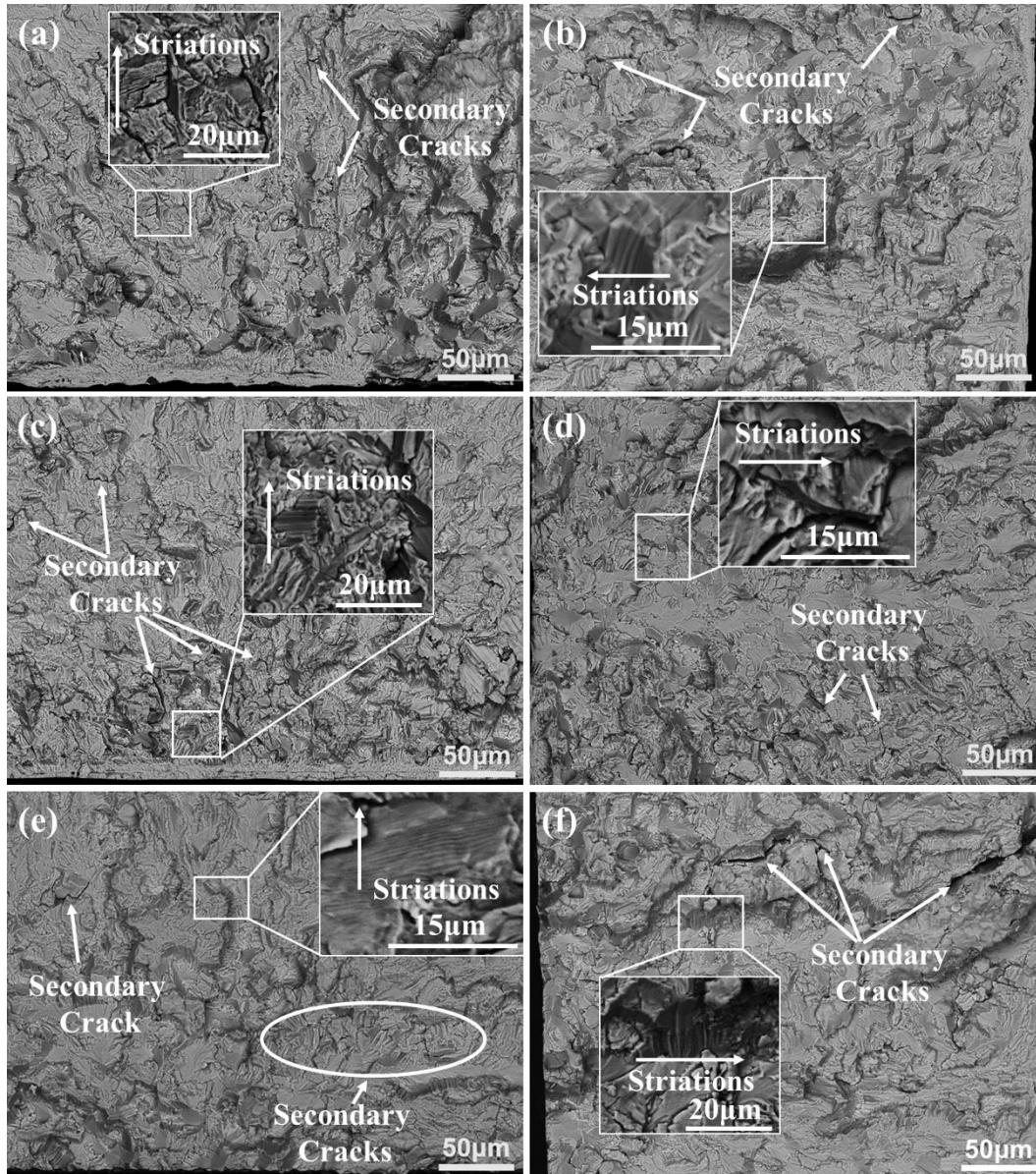


Fig. 15 High magnification SEM images of fracture initiation sites in the as-processed and post-processed (a) (b) ground, (c) (d) LAEBM and (e) (f) WEDM specimens

Closer inspection of the as-processed LAEBM surfaces revealed another possible subsurface fatigue initiation site as shown in Fig. 16, which was potentially caused by the surface defect. This was deduced from the appearance of ratchet marks [36] highlighted in the SEM images.

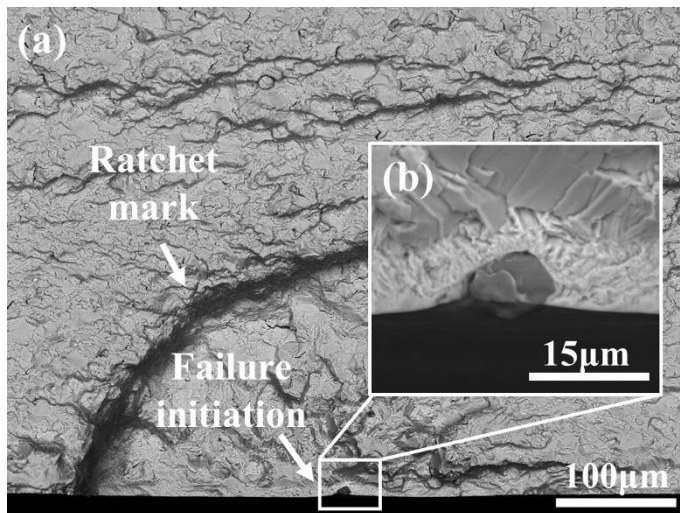


Fig. 16 (a) Subsurface fracture initiation site on the as-processed LAEBM specimen caused by surface defect and (b) the higher magnification SEM photo of the defect

4. Discussion

4.1. *The influence of machining process and shot-peening on fatigue performance*

Based on the surface roughness results detailed in Table 4, shot peening led to an increase in roughness of the milled, ground and WEDM specimens while the LAEBM specimen remained approximately the same. Conversely, a reduction in roughness was obtained in the AWJ surfaces, most likely due to ‘smoothing’ of the high peaks inherent with such processes. The effects of surface roughness on the fatigue performance are not clear in this case since the residual stress generated during the manufacturing processes is another critical factor. Moussaoui et al. [37] obtained similar results, i.e. no obvious evidence showing that surface roughness can significantly affect the fatigue life of a specimens, while higher compressive residual stresses were found to increase the fatigue life of a specimen.

The S-N curves in Fig. 9 show a trend of improved fatigue performance in all post-processed specimens with higher run-out stress levels observed in most cases (also can be told from Table 6). Post-processing significantly lowered the differences of fatigue performance in specimens machined with the various techniques. This may be due to the fact that shot peening homogenised the features [38] of the machined/built surfaces (as shown in Fig. 6) and also applies enhanced local stress conditions [39]. The only exception was with WEDM, as shown in Fig. 8(e), which exhibited equivalent run-out stresses in the as-processed and post-processed state (600 MPa).

The as-processed milled and WEDM specimens were found to have approximately equivalent fatigue performance in the range of 650-750 MPa, which is in agreement with results reported by Antar et al. [25] and Soo et al. [26] but contradicts the data published by Mower [21]. This may be the result of differences in the WEDM parameters and fatigue testing conditions utilised. Mower [21] carried out testing at a frequency of 10 Hz, while the current work entailed a substantially higher loading rate ranging between 80-82 Hz with the specimens machined using minimum damage EDM generator technology. The post-processed milled specimens as shown in Fig. 8(a) however displayed erratic fatigue performance with a large spread of values where for example, the number of cycles to failure at 700 MPa varied between 110,000 and 1,000,000. Results for the as-processed specimens were more uniform and they usually failed after a longer number of loading cycles. The S-N curves for both conditions were similar, but the large scatter of data points indicates a greater magnitude of error.

The surface ground specimens showed inferior fatigue performance relative to the other machining processes evaluated, possibly due to the relatively mild parameters employed (6 μm depth of cut per pass) and hence likely lack of any major compressive residual stresses. The results for the as-processed specimens again varied greatly, with a wide distribution of cycles to failure recorded at almost every stress level, see Fig. 8(b). Conversely, post-processed surface ground specimens were consistent.

Amongst the as-processed specimen groups, those machined by AWJ generally possess the best fatigue performance. This can be attributed to the compressive residual stresses generated on the treated surface, which serve to impede crack formation and growth during fatigue testing [40]. In terms of the post-processed specimens, the AWJ machined specimen still possessed the best fatigue performance in the high-stress range. The benefits of shot peening were only discernible at higher applied stress levels, for applied maximum stresses up to 800 MPa, results for the as-processed and post-processed AWJ specimens, as detailed in Fig. 8(c) were similar. As outlined by Arola et al. [13], the AWJ treated Ti-6Al-4V specimens showed a rise of 25% in endurance strength, which is broadly consistent with results reported here.

A marked improvement in fatigue performance was prevalent in the post-processed LAEBM specimens, with the cycles to failure close to an order of magnitude higher than corresponding as-processed test pieces at most applied stress levels; see Fig. 8(d). Though the fatigue performance of the as-processed LAEBM specimens was poor compared to the WEDM ones, the fatigue performance was almost the same after post-processing. Fatigue life was typically great in post-processed WEDM specimens, especially at higher applied stresses.

4.2. *Fractography*

Of the 5 as-processed specimens, 2 had fracture initiation sites on the side surface. All specimens had their fracture initiation sites moved further away from the treated surface after post-processing (as shown in Table 5), this can be explained as a result of the strengthening mechanism of shot peening. The treated surface and adjacent bulk material were strengthened by the compressive residual stress generated during shot peening, so that they can withstand the highest tensile stress, whilst fracture initiated from somewhere with lower fatigue strength in the specimen. The non-treated side faces have lower fatigue strength compared to the strengthened face, meaning that these sites act as fracture initiation sites after undergoing more cycles than the as-processed specimens, since the stress magnitudes applied on the side surfaces are lower. Similar fracture initiation sites movement, i.e. from strengthened area to less strengthened area, were found in the studies by Hitoshi et al. [41] and Hiroshi et al. [42]. The stress at the side faces is smaller than that in the treated surface, thus specimens normally exhibit a longer fatigue life.

As shown in Fig. 11, the as-processed milled specimen has much larger cracks on the fracture initiation site than the post-processed specimen, which mainly due to the applied stress becoming smaller with the increase in distance between the fracture initiation site and the treated surface (as shown in Fig. 5). This also explains the reason for the fracture initiation sites of as-processed and post-processed AWJ specimens having similar features. In the as-processed ground, LAEBM and WEDM specimens, the fracture initiation sites were all located within the residual stress affected zone. Grinding [43] can normally lead to compressive residual stress below specimen's surface with the assistance of vibration, which is able to neutralise part of the external tensile stress, while LAEBM [44] and WEDM [24] normally results in tensile residual stresses which will boost the detrimental effects of external tensile stress. Thus, a greater number of large sized cracks can be observed in the as-processed LAEBM and WEDM specimens (as shown in Fig. 15(c) and (e)). Since the fracture initiation sites in post-processed specimens were some distance away from the treated surface and with the effects (i.e. residual stress generated during the process) of shot peening on Ti-6Al-4V normally limited to a depth of around 200 μm [30], the features of the fracture initiation sites in these locations are mainly dependent on the properties of the bulk material.

5. Conclusions

In this study, the influence of different machining operations on the fatigue performance of Ti-6Al-4V was initially compared. The response following shot peening of the respective processed surfaces was also considered. The milled, AWJ and WEDM machined surfaces showed better fatigue strength than the corresponding surface ground and LAEBM specimens although the discrepancy in performance was substantially reduced post shot-peening.

Within the as-processed specimen group, the AWJ surfaces demonstrated the best fatigue performance, especially in the high applied stress zone where the number of cycles to failure was around ~500,000 at 700 MPa. This was likely caused by a compound peening effect from both the AWJ and conventional shot-peening operations. The milled and WEDM specimens were observed to have a similar fatigue life, which was comparable to AWJ at the lower-stress range below 700 MPa.

In general, the fatigue strength of shot-peened specimens was superior to those in the as-processed state, which is attributed the induced compressive residual stresses on the test face under maximum tension during testing regardless of the base surface processing method. However, results from SEM imaging of the fracture surfaces revealed that a large majority of specimens showed cracks initiating close to the treated surface of the specimens, either on the processed or side face. In any case, all shot peened fatigue specimens had cracks originating from the side faces, instead of treated surfaces.

Acknowledgements

The authors would like to acknowledge the support of EPSRC EP/L017121/1 “EPSRC High Value Manufacturing Catapult Fellowship Centre” which provided support for A. Clare’s engagement with the Catapults. Funding provided by the Scientific and Technological Research Council of Turkey (TUBITAK) for G. Kucukturk through the International Researchers Fellowship programme is also gratefully acknowledged. Thanks are also due to A.M. Abdelhafeez and J. Ashman for their assistance with the milling and grinding fatigue specimen preparation.

References

[1] M. Field, J.F. Kahles, J.T. Canmett. A review of measuring methods for surface integrity. *Annals of the CIRP* 1972; 21: 219-238.

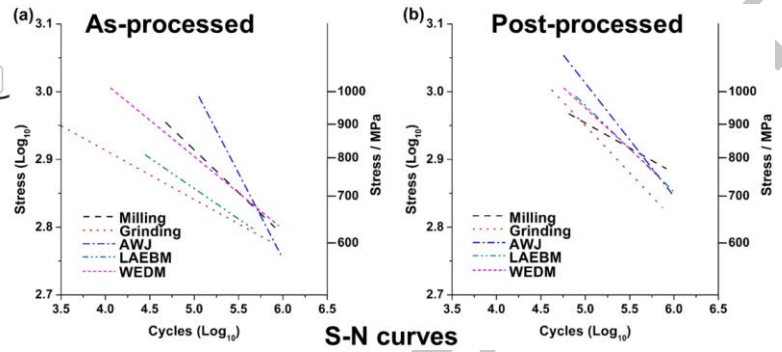
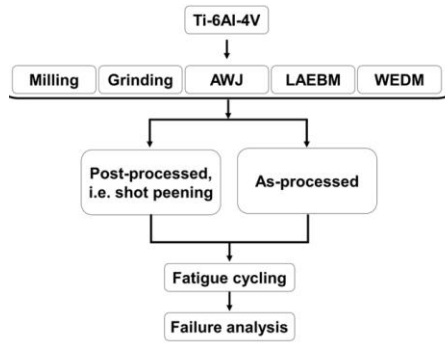
- [2] I.S. Jawahir, E. Brinksmeier, R. M'Saoubi, D.K. Aspinwall, J.C. Outeiro, D. Meyer, et al. Surface integrity in material removal processes: Recent advances. *CIRP Annals - Manufacturing Technology* 2011; 60 (2): 603-626.
- [3] A. Thakur, S. Gangopadhyay. State-of-the-art in surface integrity in machining of nickel-based super alloys. *International Journal of Machine Tools and Manufacture* 2016; 100: 25-54.
- [4] R. M'Saoubi, D. Axinte, S.L. Soo, C. Nobel, H. Attia, G. Kappmeyer, et al. High performance cutting of advanced aerospace alloys and composite materials. *CIRP Annals - Manufacturing Technology* 2015; 64 (2): 557-580.
- [5] F. Klocke, S.L. Soo, B. Karpuschewski, J.A. Webster, D. Novovic, A. Elfizy, et al. Abrasive machining of advanced aerospace alloys and composites. *CIRP Annals - Manufacturing Technology* 2015; 64 (2): 581-604.
- [6] S.K. Bhaumik, M. Sujata, M.A. Venkataswamy. Fatigue failure of aircraft components. *Engineering Failure Analysis* 2008; 15 (6): 675-694.
- [7] F. Klocke, A. Klink, D. Veselovac, D.K. Aspinwall, S.L. Soo, M. Schmidt, et al. Turbomachinery component manufacture by application of electrochemical, electro-physical and photonic processes. *CIRP Annals - Manufacturing Technology* 2014; 63 (2): 703-726.
- [8] C. Yao, D. Wu, Q. Jin, X. Huang, J. Ren, D. Zhang. Influence of high-speed milling parameter on 3D surface topography and fatigue behavior of TB6 titanium alloy. *Transactions of Nonferrous Metals Society of China* 2013; 23 (3): 650-660.
- [9] K. Moussaoui, M. Mousseigne, J. Senatore, R. Chieragatti, P. Lamesle. Influence of Milling on the Fatigue Lifetime of a Ti6Al4V Titanium Alloy. *Metals* 2015; 5 (3): 1148-1162.
- [10] P. Rangaswamy, H. Terutung, S. Jeelani. Effect of grinding conditions on the fatigue life of titanium 5Al-2.5Sn alloy. *Journal of Materials Science* 1991; 26 (10): 2701-2706.
- [11] Y.B. Guo, A.W. Warren, F. Hashimoto. The basic relationships between residual stress, white layer, and fatigue life of hard turned and ground surfaces in rolling contact. *CIRP Journal of Manufacturing Science and Technology* 2010; 2 (2): 129-134.
- [12] D.D. Arola, M.L. McCain. Abrasive waterjet peening: a new method of surface preparation for metal orthopedic implants. *Journal of biomedical materials research* 2000; 53 (5): 536-546.
- [13] D. Arola, A.E. Alade, W. Weber. Improving fatigue strength of metals using abrasive waterjet peening. *Machining Science and Technology* 2006; 10 (2): 197-218.

- [14] J.W. Murray, P.K. Kinnell, A.H. Cannon, B. Bailey, A.T. Clare. Surface finishing of intricate metal mould structures by large-area electron beam irradiation. *Precision Engineering* 2013; 37 (2): 443-450.
- [15] D.I. Proskurovsky, V.P. Rotshtein, G.E. Ozur, A.B. Markov, D.S. Nazarov, V.A. Shulov, et al. Pulsed electron-beam technology for surface modification of metallic materials. *Journal of Vacuum Science & Technology A* 1998; 16 (4): 2480-2488.
- [16] A. Okada, Y. Uno, N. Yabushita, K. Uemura, P. Raharjo. High efficient surface finishing of bio-titanium alloy by large-area electron beam irradiation. *Journal of Materials Processing Technology* 2004; 149 (1-3): 506-511.
- [17] P.K. Farayibi, T.E. Abioye, J.W. Murray, P.K. Kinnell, A.T. Clare. Surface improvement of laser clad Ti-6Al-4V using plain waterjet and pulsed electron beam irradiation. *Journal of Materials Processing Technology* 2015; 218: 1-11.
- [18] K.H. Ho, S.T. Newman, S. Rahimifard, R.D. Allen. State of the art in wire electrical discharge machining (WEDM). *International Journal of Machine Tools and Manufacture* 2004; 44 (12-13): 1247-1259.
- [19] S. Kumar, R. Singh, T.P. Singh, B.L. Sethi. Surface modification by electrical discharge machining: A review. *Journal of Materials Processing Technology* 2009; 209 (8): 3675-3687.
- [20] M.İ. Gökler, A.M. Ozanözgü. Experimental investigation of effects of cutting parameters on surface roughness in the WEDM process. *International Journal of Machine Tools and Manufacture* 2000; 40 (13): 1831-1848.
- [21] T.M. Mower. Degradation of titanium 6Al-4V fatigue strength due to electrical discharge machining. *International Journal of Fatigue* 2014; 64: 84-96.
- [22] D.K. Aspinwall, S.L. Soo, A.E. Berrisford, G. Walder. Workpiece surface roughness and integrity after WEDM of Ti-6Al-4V and Inconel 718 using minimum damage generator technology. *CIRP Annals - Manufacturing Technology* 2008; 57 (1): 187-190.
- [23] M.T. Antar, S.L. Soo, D.K. Aspinwall, M. Cuttall, R. Perez, A.J. Winn. WEDM of aerospace alloys using 'Clean Cut' generator technology. in: the 16th International Symposium on Electro-Machining (ISEM XVI), Shanghai, China; 2010, p. 285 – 290.
- [24] M.T. Antar, S.L. Soo, D.K. Aspinwall, D. Jones, R. Perez. Productivity and Workpiece Surface Integrity When WEDM Aerospace Alloys Using Coated Wires. *Procedia Engineering* 2011; 19: 3-8.
- [25] M.T. Antar, S.L. Soo, D.K. Aspinwall, C. Sage, M. Cuttall, R. Perez, et al. Fatigue response of Udimet 720 following minimum damage wire electrical discharge machining. *Materials & Design* 2012; 42: 295-300.

- [26] S.L. Soo, M.T. Antar, D.K. Aspinwall, C. Sage, M. Cuttall, R. Perez, et al. The Effect of Wire Electrical Discharge Machining on the Fatigue Life of Ti-6Al-2Sn-4Zr-6Mo Aerospace Alloy. *Procedia CIRP* 2013; 6: 215-219.
- [27] A. Alias, B. Abdullah, N.M. Abbas. Influence of Machine Feed Rate in WEDM of Titanium Ti-6Al-4V with Constant Current (6A) Using Brass Wire. *Procedia Engineering* 2012; 41: 1806-1811.
- [28] F. Klocke, D. Welling, J. Dieckmann. Comparison of Grinding and Wire EDM Concerning Fatigue Strength and Surface Integrity of Machined Ti6Al4V Components. *Procedia Engineering* 2011; 19: 184-189.
- [29] P.D. Rufe. *Fundamentals of Manufacturing*. 3rd ed. Dearborn, Michigan: Society of Manufacturing Engineers (SME); 2013.
- [30] X.P. Jiang, C.S. Man, M.J. Shepard, T. Zhai. Effects of shot-peening and re-shot-peening on four-point bend fatigue behavior of Ti-6Al-4V. *Materials Science and Engineering: A* 2007; 468-470: 137-143.
- [31] K. Takahashi, E. Sato. Influence of Surface Treatments on Fatigue Strength of Ti6Al4V Alloy. *Materials Transactions* 2010; 51 (4): 694-698.
- [32] SAE International. J442-Test Strip, Holder, and Gage for Shot Peening, http://standards.sae.org/j442_201708/; 2013 [accessed 25 August 2017].
- [33] ASTM. D790-17 Standard Test Methods for Flexural Properties of Unreinforced and Reinforced Plastics and Electrical Insulating Materials, <https://doi.org/10.1520/D0790-17>; 2017 [accessed 25 August 2017].
- [34] B.L. Boyce, R.O. Ritchie. Effect of load ratio and maximum stress intensity on the fatigue threshold in Ti-6Al-4V. *Engineering Fracture Mechanics* 2001; 68 (2): 129-147.
- [35] J.R. Taylor. *An introduction to error analysis*. 2nd ed. Sausalito, California: University Science Books; 1997.
- [36] N.W. Sachs. Understanding the surface features of fatigue fractures: How they describe the failure cause and the failure history. *Journal of Failure Analysis and Prevention* 2005; 5 (2): 11-15.
- [37] K. Moussaoui, M. Mousseigne, J. Senatore, R. Chieragatti. The effect of roughness and residual stresses on fatigue life time of an alloy of titanium. *Int J Adv Manuf Technol* 2015; 78 (1): 557-563.
- [38] OSK. Surface finish, superficial structure and surface topography after shot peening, http://osk-kiefer.de/wp-content/uploads/10-shot_peening_and_surface_finish.pdf; 2017 [accessed 25 August 2017].

- [39] C. Yao, X. Dou, D. Wu, Z. Zhou, J. Zhang. Surface integrity and fatigue analysis of shot-peening for 7055 aluminum alloy under different high-speed milling conditions. *Advances in Mechanical Engineering* 2016; 8 (10): 1-10.
- [40] M. Lieblich, S. Barriuso, J. Ibáñez, L. Ruiz-de-Lara, M. Díaz, J.L. Ocaña, et al. On the fatigue behavior of medical Ti6Al4V roughened by grit blasting and abrasiveless waterjet peening. *Journal of the Mechanical Behavior of Biomedical Materials* 2016; 63: 390-398.
- [41] H. Soyama, K. Saito, M. Saka. Improvement of Fatigue Strength of Aluminum Alloy by Cavitation Shotless Peening. *Journal of Engineering Materials and Technology* 2002; 124 (2): 135-139.
- [42] H. Nakamura, M. Takanashi, Y. Itabashi, H. Kuroki, Y. Ueda. Shot Peening Effect on Low Cycle Fatigue Properties of Ti-6Al-4V and Inconel 718. 2011; (54648): 791-797.
- [43] N.k. Maroju, X. Jin. Effects of Vibration Assistance on Surface Residual Stress in Grinding of Ti6Al4V Alloy. *Procedia Manufacturing* 2017; 10: 171-182.
- [44] K.M. Zhang, J.X. Zou, B. Bolle, T. Grosdidier. Evolution of residual stress states in surface layers of an AISI D2 steel treated by low energy high current pulsed electron beam. *Vacuum* 2013; 87: 60-68.

Graphical abstract



Highlights

- The fatigue performance and failure mechanisms of Ti-6Al-4V specimens subject to end milling, surface grinding, abrasive waterjet machining, wire electrical discharge machining, and large area electron beam melting are characterised and compared.
- The effects of shot peening, which applied as post processing technique, were evaluated.
- Machining processes which contribute to better fatigue performance were identified.

ACCEPTED MANUSCRIPT