

## Lee Silverman Voice Treatment versus standard speech and language therapy versus control in Parkinson's disease:

Sackley, Catherine M.; Smith, Christina H.; Rick, Caroline; Brady, Marian C.; Ives, Natalie; Patel, Smitaa; Woolley, Rebecca; Dowling, Francis; Patel, Ramilla; Roberts, Helen; Jowett, Sue; Wheatley, Keith; Kelly, Debbie; Sands, Gina; Clarke, Carl E; PD COMM Pilot Collaborative Group

DOI:

[10.1186/s40814-017-0222-z](https://doi.org/10.1186/s40814-017-0222-z)

License:

Creative Commons: Attribution (CC BY)

*Document Version*

Publisher's PDF, also known as Version of record

*Citation for published version (Harvard):*

Sackley, CM, Smith, CH, Rick, C, Brady, MC, Ives, N, Patel, S, Woolley, R, Dowling, F, Patel, R, Roberts, H, Jowett, S, Wheatley, K, Kelly, D, Sands, G, Clarke, CE & PD COMM Pilot Collaborative Group 2018, 'Lee Silverman Voice Treatment versus standard speech and language therapy versus control in Parkinson's disease: a pilot randomised controlled trial (PD COMM pilot)', *Pilot and Feasibility Studies*, vol. 4, no. 30. <https://doi.org/10.1186/s40814-017-0222-z>

[Link to publication on Research at Birmingham portal](#)

### General rights

Unless a licence is specified above, all rights (including copyright and moral rights) in this document are retained by the authors and/or the copyright holders. The express permission of the copyright holder must be obtained for any use of this material other than for purposes permitted by law.

- Users may freely distribute the URL that is used to identify this publication.
- Users may download and/or print one copy of the publication from the University of Birmingham research portal for the purpose of private study or non-commercial research.
- User may use extracts from the document in line with the concept of 'fair dealing' under the Copyright, Designs and Patents Act 1988 (?)
- Users may not further distribute the material nor use it for the purposes of commercial gain.

Where a licence is displayed above, please note the terms and conditions of the licence govern your use of this document.

When citing, please reference the published version.

### Take down policy

While the University of Birmingham exercises care and attention in making items available there are rare occasions when an item has been uploaded in error or has been deemed to be commercially or otherwise sensitive.


If you believe that this is the case for this document, please contact [UBIRA@lists.bham.ac.uk](mailto:UBIRA@lists.bham.ac.uk) providing details and we will remove access to the work immediately and investigate.

RESEARCH

Open Access



# Lee Silverman Voice Treatment versus standard speech and language therapy versus control in Parkinson's disease: a pilot randomised controlled trial (PD COMM pilot)

Catherine M. Sackley<sup>1</sup>, Christina H. Smith<sup>2</sup>, Caroline E. Rick<sup>3</sup>, Marian C. Brady<sup>4</sup>, Natalie Ives<sup>3</sup>, Smitaa Patel<sup>3</sup>, Rebecca Woolley<sup>3</sup>, Francis Dowling<sup>3</sup>, Ramilla Patel<sup>5</sup>, Helen Roberts<sup>6</sup>, Sue Jowett<sup>7</sup>, Keith Wheatley<sup>8</sup>, Debbie Kelly<sup>9</sup>, Gina Sands<sup>11</sup>, Carl E. Clarke<sup>7,10\*</sup>  and on behalf of the PD COMM Pilot Collaborative Group

## Abstract

**Background:** Speech-related problems are common in Parkinson's disease (PD), but there is little evidence for the effectiveness of standard speech and language therapy (SLT) or Lee Silverman Voice Treatment (LSVT LOUD®).

**Methods:** The PD COMM pilot was a three-arm, assessor-blinded, randomised controlled trial (RCT) of LSVT LOUD®, SLT and no intervention (1:1:1 ratio) to assess the feasibility and to inform the design of a full-scale RCT. Non-demented patients with idiopathic PD and speech problems and no SLT for speech problems in the past 2 years were eligible. LSVT LOUD® is a standardised regime (16 sessions over 4 weeks). SLT comprised individualised content per local practice (typically weekly sessions for 6–8 weeks). Outcomes included recruitment and retention, treatment adherence, and data completeness. Outcome data collected at baseline, 3, 6, and 12 months included patient-reported voice and quality of life measures, resource use, and assessor-rated speech recordings.

**Results:** Eighty-nine patients were randomised with 90% in the therapy groups and 100% in the control group completing the trial. The response rate for Voice Handicap Index (VHI) in each arm was  $\geq 90\%$  at all time-points. VHI was highly correlated with the other speech-related outcome measures. There was a trend to improvement in VHI with LSVT LOUD® (difference at 3 months compared with control:  $-12.5$  points; 95% CI  $-26.2, 1.2$ ) and SLT (difference at 3 months compared with control:  $-9.8$  points; 95% CI  $-23.2, 3.7$ ) which needs to be confirmed in an adequately powered trial.

**Conclusion:** Randomisation to a three-arm trial of speech therapy including a no intervention control is feasible and acceptable. Compliance with both interventions was good. VHI and other patient-reported outcomes were relevant measures and provided data to inform the sample size for a substantive trial.

**Trial registration:** International Standard Randomised Controlled Trial Number Register: ISRCTN75223808. registered 22 March 2012.

**Keywords:** Parkinson's disease, Pilot randomised controlled trial, Speech and language therapy

\* Correspondence: carlclarke@nhs.net

<sup>7</sup>Institute for Applied Health Research, University of Birmingham, Birmingham, UK

<sup>10</sup>Department of Neurology, Clinical Neurology City Hospital, Sandwell and West Birmingham Hospitals NHS Trust, Dudley Road, Birmingham B18 7QH, UK

Full list of author information is available at the end of the article



© The Author(s). 2018 **Open Access** This article is distributed under the terms of the Creative Commons Attribution 4.0 International License (<http://creativecommons.org/licenses/by/4.0/>), which permits unrestricted use, distribution, and reproduction in any medium, provided you give appropriate credit to the original author(s) and the source, provide a link to the Creative Commons license, and indicate if changes were made. The Creative Commons Public Domain Dedication waiver (<http://creativecommons.org/publicdomain/zero/1.0/>) applies to the data made available in this article, unless otherwise stated.

## Background

Speech problems affect 51–74% of patients with Parkinson's disease (PD). [1–3] Speech changes can occur in the early stages of the disease and difficulty in communication can lead to social isolation. In a UK survey of 125 people with mainly early PD, Miller and colleagues [4] found only 4.2% reported no changes to their speech or voice and 82% were dissatisfied with how they spoke. For 10%, speech was their main concern amongst all the changes experienced due to PD and 38% placed speech in their top four concerns.

Drug therapy has only modest effects on prosodic aspects of parkinsonian speech, so other therapeutic measures such as speech and language therapy (SLT) could play a role in treatment. [5] Conventional SLT is tailored to individual patients' needs and may include: diaphragmatic breathing, pacing/rate control, word-finding strategies, and voice/articulation exercises. [6] One technique that has been used in PD is attention to effort, where the speaker is asked to produce a loud voice and focus their effort on attaining, monitoring, and maintaining this. This technique was formalised in an evidence-based commercially available programme provided by the Lee Silverman Voice Treatment (LSVT LOUD®) organisation from the late 1980s. [7] Several studies [8–11] showed promising results of LSVT LOUD® producing, not only louder voice, but also gains in articulatory parameters which were sustained at follow-up. Cochrane reviews have summarised the evidence for the efficacy of various forms of SLT in PD, but concluded that there was insufficient evidence to support the use of one form of SLT over another and recommended a large, methodologically sound randomised controlled trial (RCT), with follow-up of at least 6 months and meaningful outcome measures. [12, 13]

The PD COMM pilot trial assessed the feasibility and acceptability of a large-scale RCT to assess the clinical and cost effectiveness of LSVT LOUD® versus standard SLT versus no intervention in dysarthria associated with PD. In accordance with guidance of the Medical Research Council (MRC) for trials of complex interventions [14] the following parameters were assessed: (1) feasibility and acceptability of randomising PD patients with problems of speech or voice to LSVT LOUD®, traditional SLT interventions or no intervention control; (2) patient eligibility, recruitment, and retention rates; (3) numbers of sites and patients that need to be screened; (4) time required to undertake a full-scale trial; (5) acceptability and adherence with LSVT LOUD®; (6) dose and content of traditional SLT; (7) data completeness and suitability of data collection methods; (8) assessment of the most suitable primary outcome measure for the full-scale trial and to obtain initial estimates to inform the sample size calculation; and (9) pilot bespoke and standard health economic evaluation questionnaires.

## Methods

### Study design

The PD COMM pilot trial protocol has been published. [15] The trial was designed as a multicentre three-arm parallel group randomised controlled pilot trial with blinded assessor. It was sponsored by the University of Birmingham, received ethical approval from the West Midlands, Coventry and Warwick NHS Research Ethics Committee (11/WM/0343), and local NHS R&D approval at each site prior to the start of recruitment. The trial was managed by the University of Birmingham Clinical Trials Unit (BCTU). Due to the nature of the intervention, therapists and patients were not blinded to treatment allocation; however, assessors of the vocal assessment outcome data were all blinded to treatment allocation for the duration of the trial.

### Patients

Eligibility criteria were idiopathic PD defined by the UK Parkinson's Disease Society Brain Bank Criteria; [16] and presence of patient or carer-reported problems with speech. [1] Exclusion criteria were dementia as defined clinically by the physician; evidence of laryngeal pathology including vocal nodules, a history of vocal strain, or previous laryngeal surgery as LSVT LOUD® is not appropriate for all of this group; [9] received SLT for PD speech-related problems in the past 2 years; and the investigator thought that the patient did not definitely require SLT in the short term.

### Consent and randomisation

Potential patients who met the eligibility criteria were approached in their normal outpatient appointments. If interested, they were given a patient information sheet and time to consider the trial and discuss it with friends and family. Following consent, patients completed baseline assessments prior to randomisation. For practical reasons, baseline vocal assessments were allowed to be performed after randomisation, but had to be completed prior to the start of therapy.

After completing the baseline questionnaires, patients were randomised in a 1:1:1 ratio to the three groups via the trials unit telephone randomisation service. This secure central randomisation service was available from 9 am to 5 pm weekdays and ensured the concealment of treatment allocation. A computer-generated randomisation list was used. Patients and therapists were informed of the treatment allocation, but assessors of the vocal assessments remained blind to treatment allocation. If allocated to an intervention arm, referral to the appropriate speech and language therapist occurred immediately following randomisation. All personal information obtained for the study was held securely and treated as strictly confidential.

## Interventions

Both SLT and LSVT LOUD® were delivered either in community-based healthcare places or in outpatient neurology units in the UK.

LSVT LOUD® was administered in four sessions per week for 4 weeks (i.e. 16 sessions in total) by state registered speech and language therapists with certification in Lee Silverman Voice Therapy and appropriate refresher courses working within the NHS. Each session lasted 50–60 min. In addition, patients were asked to complete 5–10 min of home practise on treatment days and up to 30 min of home practise on non-treatment days. LSVT LOUD® comprises maximum effort non-speech and speech drills. The non-speech drills include production of sustained ‘ah’ phonation at a single pitch and pitch glides (moving from modal pitch to high pitch and modal pitch and going down on production of sustained ‘ah’). These exercises are for improving vocal effort and loudness for translation into functional speech. The speech drills utilise a hierarchy of speech tasks moving from single words through phrases and onto conversational speech. Each step in this hierarchy puts increased demands on the speaker and challenges the speaker to maintain maximal speech production. It is important to note the intervention incorporates retraining the sensory system to improve loudness.

SLT was administered as per local practice by state-registered speech and language therapists and was expected to typically involve one session of 45 min per week for 6–8 weeks of varying content as determined by patient need. Treatments could include exercises targeting respiration, phonation, articulation [17, 18], behavioural strategies to reduce prosodic abnormality [19], and the use of augmentative and alternative communication (AAC) strategies and therapeutic devices to improve functional communication [20].

Those individuals allocated to the control group continued with their standard PD care. They were excluded from receiving SLT input for at least 6 months post-randomisation, unless their clinician deemed it to be medically necessary. After 6 months, people in the control arm were eligible to be referred for therapy if required.

Training on trial processes was provided for trial therapists by the clinical trial team to ensure uniformity of trial procedures. Therapists providing the interventions completed intervention record forms at each session, as used in previous complex intervention trials, [21] to allow monitoring of intervention delivery.

## Sample size

As this was a pilot study, no formal sample size calculation was performed. The study aimed to recruit at least 20 patients in each group, a total of at least 60 patients.

## Outcomes

Data on various outcome measures were collected to assess appropriate outcome measures to be used in a large-scale trial: patient-reported measures-Voice Handicap Index (VHI) [22], Parkinson’s Disease Questionnaire-39 (PDQ-39) [23], voice-related quality of life scale (V-RQoL) [24], Living with Dysarthria questionnaire (LwD) [25], EuroQol (EQ-5D) [26, 27], ICECAP capability measure for older people (ICECAP-O) [28], and resource usage; therapist measures-vocal loudness, comprehension assessments, and Assessment of Intelligibility of Dysarthric Speech (AIDS) [29]; carer-reported quality of life (Parkinson’s Disease Questionnaire–Carer, PDQ–Carer [30]); and adverse events. The questionnaires used were all validated and widely used tools. Data were collected before randomisation and 3, 6, and 12 months after randomisation. The bespoke resource usage questionnaire was assessed at 3, 6, and 12 months for suitability in a definitive trial. This included questions on health and social care resource use, employment and time off work, and out of pocket costs incurred by patients.

Following a risk assessment, it was agreed that this was a low risk trial and that only vocal strain or abuse were likely to be related to the interventions. Therefore, targeted treatment-related adverse events and serious adverse events such as vocal strain or abuse were collected.

## Data analyses

As this was a feasibility study, definitive comparisons of the interventions were not undertaken. Feasibility measures and outcome data were therefore summarised descriptively. Details on patient screening, recruitment and retention, withdrawals and those lost to follow-up, along with reasons for non-completion, and adherence were summarised using a CONSORT diagram (objectives 1–5). Adherence with LSVT LOUD was assessed as the proportion of patients who completed the intervention as per the protocol (objective 5). Information on the interventions including the median number and mean duration of sessions was summarised descriptively (objectives 5 and 6). The percentage of forms returned and level of data completeness at each time point was tabulated (objective 7). Assessment of the most suitable primary outcome measure for the full-scale trial and which outcomes to retain in a substantive trial included (1) an assessment of data completeness and (2) correlation methods to identify which outcome measures were closely correlated (objective 8). To help inform the sample size calculation, the mean and standard deviation for each outcome was summarised at each time point and an exploratory analysis of differences between the arms (LSVT LOUD® versus no intervention, SLT versus no

intervention, and LSVT LOUD® versus SLT) was performed, calculating the mean difference at each time point and the mean change from baseline to 3, 6, and 12 months alongside 95% confidence intervals (CI) (objective 8). Missing values in PDQ-39 domain scores were imputed using an expectation maximisation algorithm.[31, 32] As is standard for phase III clinical trials, the pilot outcome data were analysed using intention-to-treat methods with patients analysed in the treatment group to which they were randomised regardless of adherence to the intervention or protocol. Statistical analysis was performed using SAS version 9.4 software.

## Results

### Patient acceptability, screening, recruitment, and retention (objectives 1–4)

Sites reported screening 2223 patients, with 89 patients randomised into the PD COMM pilot trial from 12 centres between May 2012 and March 2014. Data on the potential participants screened showed variations in recruitment methods: some centres screened PD clinic populations sequentially, whereas others recruited patients from therapist services. The reasons patients were not entered into the trial were no problems with speech or voice ( $n = 1406$ ), had SLT or likely to ( $n = 177$ ), dementia ( $n = 176$ ), too unwell ( $n = 119$ ), already in a trial ( $n = 92$ ), very little English ( $n = 21$ ), and declined ( $n = 143$ ). Therefore, the main reason for non-entry into the trial was that the patient was not eligible (79%). Only 6% of screened participants declined the trial which suggests that the study was acceptable to patients.

Thirty patients were randomised to LSVT LOUD®, 30 to SLT, and 29 to the control group, with 27 (90%), 27 (90%), and 29 (100%) completing the trial, respectively (Fig. 1).

### Treatment fidelity, adherence, and content (objectives 5 and 6)

In the LSVT LOUD® group, 26 of 30 patients started LSVT, with 22 (73%) completing LSVT as per protocol (Fig. 1). Seven patients randomised to LSVT LOUD® either did not start ( $n = 3$ ) or stopped therapy early (i.e. did not complete 16 sessions;  $n = 4$ ). The four patients that stopped therapy received 1–3 sessions. Three of these seven patients withdrew from the trial citing the intensity and time commitment of LSVT LOUD® as the reason for withdrawal (Fig. 1). One patient randomised to SLT did not start therapy for family reasons and then withdrew from the trial.

In the LSVT LOUD® group, 47% of patients had their initial interview within 4 weeks of randomisation compared to 57% in the standard SLT group. Delivery of the intervention was good, with 96% in the LSVT LOUD® arm and 97% in the SLT arm starting treatment within

3 months, and 86% in the LSVT LOUD® arm and 73% in the SLT arm completing treatment within 3 months. In the LSVT LOUD® group, patients had a median of 16 sessions lasting on average 61 min over 4.7 weeks. In the SLT group, patients had a median of 6 sessions lasting on average 54 min over 9.6 weeks.

### Form return rates and data completeness (objective 7)

Data return rates were very good ( $> 90\%$ ). The combined response rates for VHI was 99, 93, 95, and 94% at baseline, 3, 6, and 12 months follow-up, respectively, and the return rates were balanced across the arms. Completion of the VHI forms was close to the planned time points, and data completeness was good. Similar return rates and levels of data completeness were seen across all the other outcome measures. In the V-RQoL, one question was not answered reliably (“I have trouble doing my job or practising my profession”), so this questionnaire has been dropped in the main trial.

### Patient characteristics at randomisation

Patients entering the trial had a mean age of 67 years (male 78%; body mass index 27 kg/m<sup>2</sup>). Mean disease duration was 5.5 years with a baseline Hoehn and Yahr stage  $\leq 2.0$  in 66%. The mean baseline levodopa dose equivalent was 580 mg/day (Table 1). [33] Thirty-five patients had a regular carer of which 29 (83%) consented to enter the trial and complete the PDQ-Carer questionnaire (13 LSVT, 11 NHS, 5 control). Most carers were female and spouses.

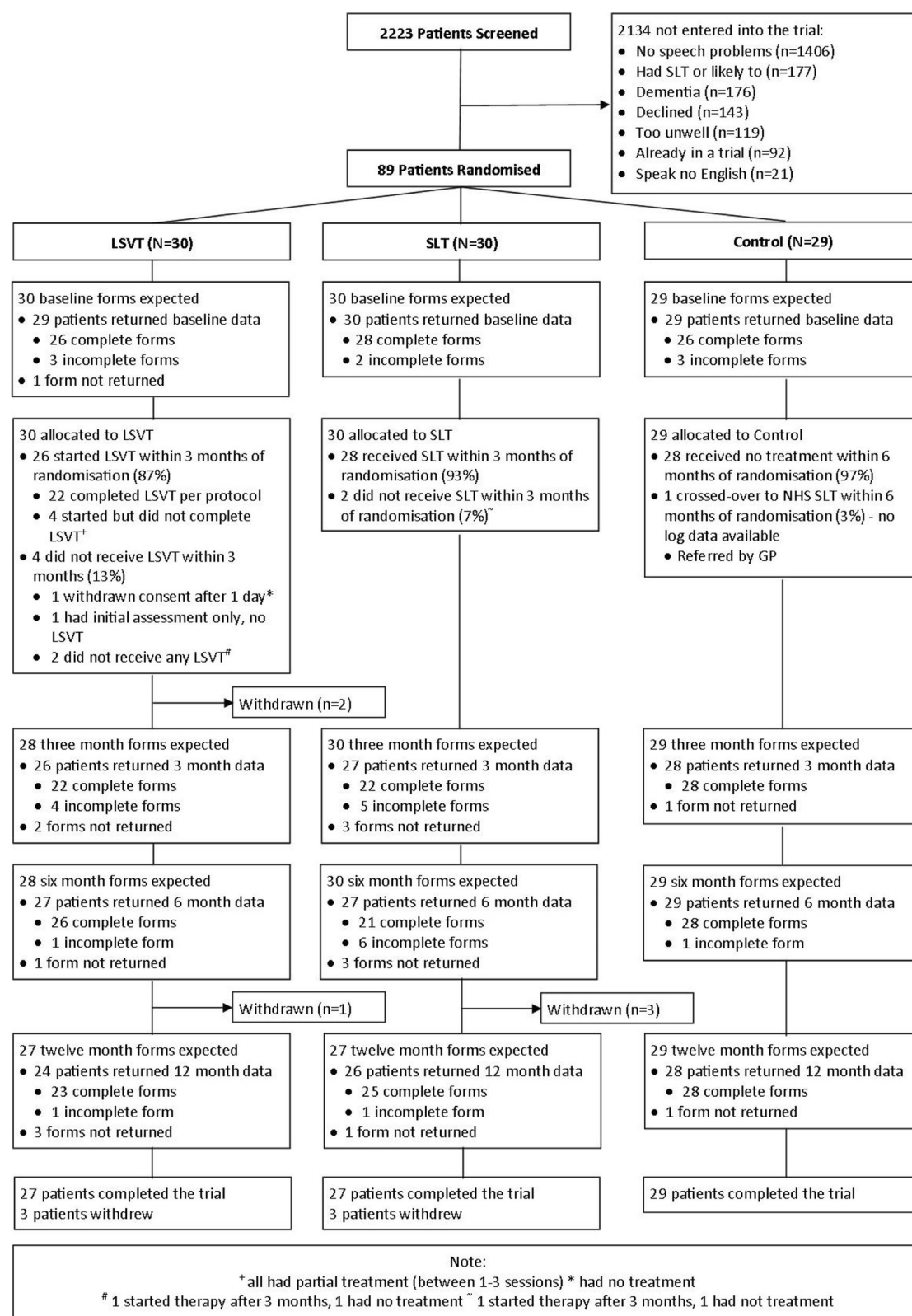
### Assessment of outcome measures for the full-scale trial (objective 8)

Correlations between the patient and therapist-assessed outcomes were varied (Table 2; range  $-0.58$  to  $0.02$ ), but patient-reported outcomes correlated well with each other ( $r > 0.7$ ). Interestingly, vocal loudness did not correlate well with the patient-reported measures ( $r < 0.2$ ).

In a survey of patients with PD from our Patient and Public Involvement Group, we asked patients what was more important to them: vocal loudness or ability to communicate. The results showed that although vocal loudness was important, it was only one aspect of a complex problem which was also influenced by environmental factors (e.g. dry mouth, stress levels), and that patients preferred a more generic overall assessment of voice problems.

Since VHI correlated best with therapist-assessed outcomes and the PDQ-39 is a well-validated questionnaire used in PD research, we investigated both the VHI total score and PDQ-39 communication domain further as possible primary outcome measures for the main trial.



**Fig. 1** Flow of patients through the trial

**Table 1** Patient characteristics at randomisation

		LSVT	SLT	Control
Number of patients randomised		30	30	29
Age (years)	Mean (SD)	67 (8.4)	68 (10.3)	65 (7.5)
Gender	Male (N, %)	23 (77%)	23 (77%)	23 (79%)
Body Mass Index (kg/m <sup>2</sup> )	Mean (SD)	27.4 (4.3)	27.6 (4.8)	27.3 (4.2)
Duration of PD (years)	Mean (SD)	6.1 (3.7)	5.6 (4.2)	4.9 (3.4)
Hoehn and Yahr stage	≤ 2.0	20 (67%)	16 (55%)	20 (77%)
	2.5	5 (17%)	2 (7%)	5 (19%)
	3.0	4 (13%)	9 (31%)	1 (4%)
	≥ 4.0	1 (3%)	2 (7%)	0 (–)
Levodopa equivalent dose (mg/day) <sup>a</sup>	Mean (SD)	695 (466.4)	533 (328.5)	502 (451.6)

<sup>a</sup>Levodopa equivalency formula from reference [33]

#### Data to inform the sample size calculation (objective 8)

There was a –12.5-point difference (95% CI –26.2, 1.2) in the VHI total score at 3 months between LSVT LOUD® and control group, and a difference of –9.8 points (95% CI –23.2, 3.7) in the VHI total score at 3 months between SLT and control group. For the PDQ-39 communication score, at 3 months, there was a 7.5-point difference (95% CI –20.3, 5.2) between the LSVT LOUD® and control group (Table 3), and a 5.0-point difference (95% CI –16.7 to 6.8) between the SLT and control groups. The VHI total score and PDQ-39 communication domain data at baseline, and 3, 6, and 12 months are shown in Figs. 2 and 3.

The minimum clinically important change (MCIC) for the communication domain of the PDQ-39 is 4.2 points [34]. The mean baseline score was 33.8, assuming no deterioration in the control arm, the MCIC corresponds to detecting a conservative 12% difference and a small effect size of 0.17 SD. The differences between LSVT

LOUD® and SLT versus control at 3 months were 7.5 and 5.0 points, respectively. Although these differences are greater than the MCIC (4.2 points), they are close enough to the MCIC to make it difficult to justify powering a definitive study on a larger difference than the MCIC. If we used the PDQ-39 communication as our primary outcome, at 80% power and using  $\alpha = 0.025$  (to adjust for multiple comparisons), we would need to recruit 2028 patients to detect a difference of 4.2 points (the MCIC), which is unfeasible. The MCIC for VHI has not been established for this cohort of patients. The differences in VHI total score at 3 months between LSVT LOUD® and SLT versus control were 12.5 and 9.8 points, respectively. Assuming a difference of 10 points between therapy groups and control, along with the upper standard deviation of 26.3, the effect size is moderate at 0.38 SD. Due to the nature and cost of the interventions, and the trial primarily comparing intervention versus control, this justifies investigating a moderate effect size. The VHI is also a questionnaire that specifically asks an

**Table 2** Pearson correlation coefficients of participant and therapist-rated outcomes

	Baseline				3 months			
	VHI-total score	PDQ-39 communication	V-RQoL	LwD	VHI	PDQ-39 communication	V-RQoL	LwD
Participant-rated								
VHI-total score	1.00	–	–	–	1.00	–	–	–
PDQ-39 communication	0.73	1.00	–	–	0.74	1.00	–	–
V-RQoL	0.86	0.76	1.00	–	0.90	0.77	1.00	–
LwD	0.77	0.73	0.78	1.00	0.78	0.75	0.79	1.00
Therapist-rated								
AIDS words	–0.64	–0.45	–0.46	–0.33	–0.53	–0.30	–0.31	–0.38
AIDS sentences	–0.65	–0.43	–0.45	–0.35	–0.58	–0.34	–0.36	–0.35
Rainbow passage	0.17	0.15	0.16	0.08	–0.11	0.02	–0.15	–0.12
Cookie theft	–0.10	0.03	0.03	–0.14	–0.14	–0.02	–0.12	–0.18
Vocal loudness	–0.09	–0.15	–0.06	–0.12	–0.16	–0.10	–0.12	–0.18

VHI Voice Handicap Index, PDQ-39 Parkinson's Disease Questionnaire-39, V-RQoL voice-related quality of life score, LwD Living with Dysarthria score

**Table 3** Results of participant-rated and carer-rated outcomes

	Baseline			3 Months			LSVT vs. control	NHS vs. control
	LSVT	NHS	Control	LSVT	NHS	Control		
VHI total score	N = 26 42 (20.2)	N = 28 42 (25.5)	N = 26 42 (21.0)	N = 22 33 (22.4)	N = 22 36 (21.2)	N = 28 46 (25.1)	– 12.5 (– 26.2 to 1.2)	– 9.8 (– 23.2 to 3.7)
PDQ-39 communication domain	N = 29 35 (23.3)	N = 30 33 (21.5)	N = 29 33 (19.5)	N = 26 27 (22.9)	N = 27 30 (19.4)	N = 29 35 (24.0)	– 7.5 (– 20.3 to 5.2)	– 5.0 (– 16.7 to 6.8)
PDQ-39 summary index	N = 29 32 (15.5)	N = 30 28 (13.8)	N = 29 26 (14.1)	N = 26 29 (17.5)	N = 27 27 (13.8)	N = 29 29 (16.3)	– 0.2 (– 9.3 to 9.0)	– 2.1 (– 10.2 to 6.0)
V-RQoL	N = 27 20 (8.9)	N = 25 20 (8.3)	N = 25 21 (7.1)	N = 21 18 (7.8)	N = 24 19 (5.6)	N = 28 22 (8.0)	– 3.5 (– 8.1 to 1.1)	– 3.2 (– 7.1 to 0.7)
LwD	N = 27 28 (16.2)	N = 27 32 (21.9)	N = 26 27 (20.7)	N = 25 24 (21.6)	N = 24 28 (17.1)	N = 25 29 (20.4)	– 5.6 (– 17.6 to 6.3)	– 1.9 (– 12.8 to 8.9)
EQ-5D QoL score	N = 29 0.59 (0.30)	N = 30 0.64 (0.23)	N = 29 0.72 (0.18)	N = 26 0.60 (0.27)	N = 27 0.70 (0.20)	N = 28 0.60 (0.29)	0.004 (– 0.15 to 0.16)	0.11 (– 0.03 to 0.25)
PDQ-Carer summary index	N = 11 27 (19.7)	N = 11 26 (20.9)	N = 3 15 (18.2)	N = 11 32 (22.9)	N = 7 21 (13.4)	N = 4 18 (17.8)	15.8 (– 15.7 to 47.3)	5.9 (– 19.1 to 30.9)

Mean difference (95% CI) for comparisons

VHI ranges from 0 to 120; PDQ-39 ranges from 0 to 100; V-RQoL ranges from 10 to 50; LwD ranges from 0 to 90; PDQ-Carer ranges from 0 to 100, where low score is good. Negative difference favours treatment

EQ-5D ranges from – 0.59 to 1, where high score is good. Positive difference favours treatment

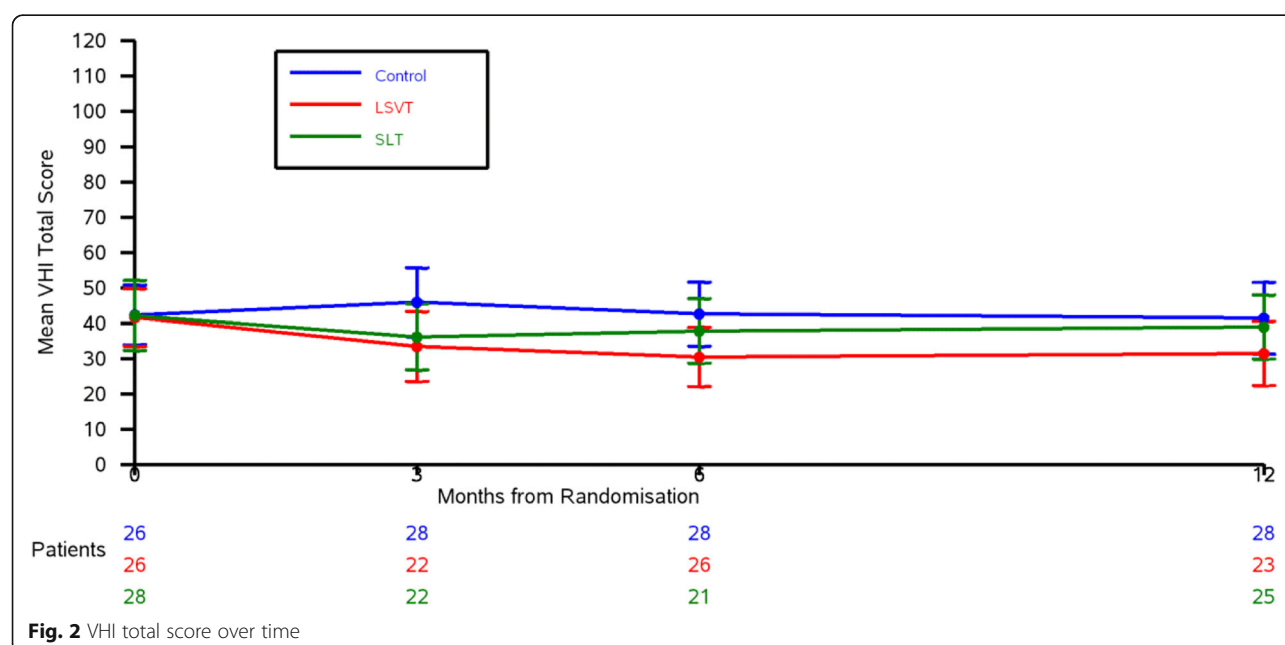
individual to describe their voice and the effects of their voice on their life. We therefore chose the VHI total score as the primary outcome measure for the substantive trial. To detect a 10-point difference in VHI total score at 3 months (upper SD 26.3; 80% power;  $\alpha = 0.025$ ) requires 399 patients (133 per group).

### Safety

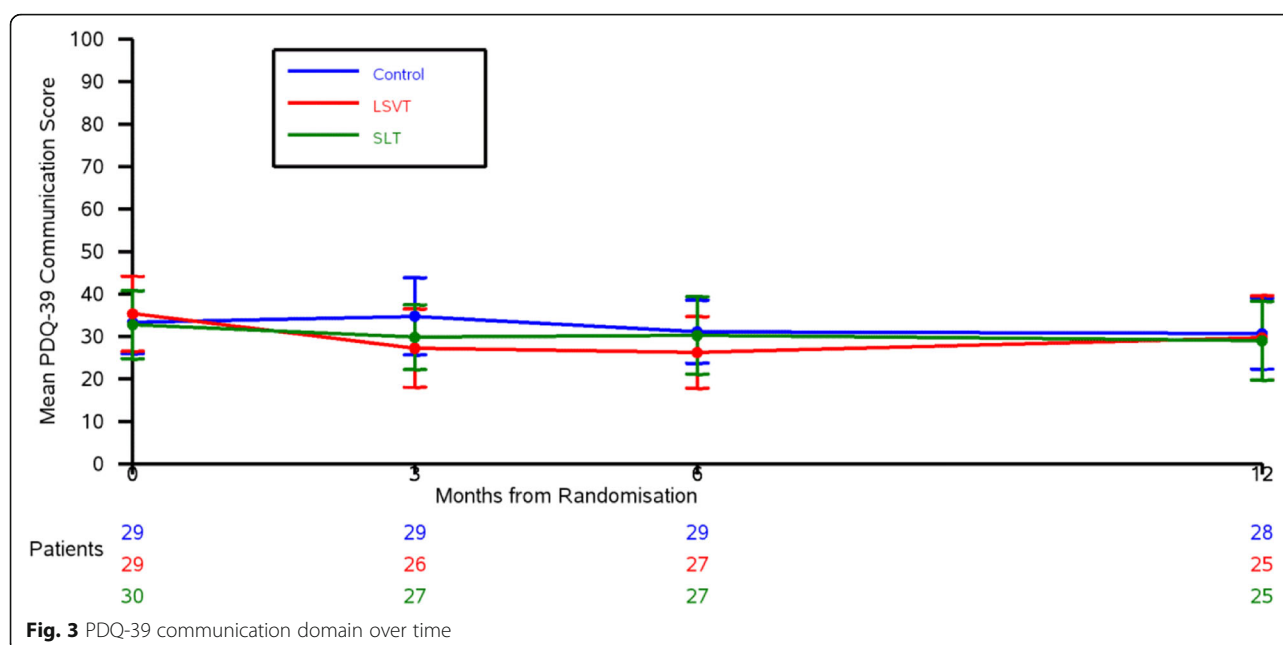
There were no adverse events or serious adverse events reported in the trial.

### Pilot health economic evaluation questionnaires (objective 9)

A substantive trial should also contain a full economic evaluation to estimate the incremental cost-effectiveness of the LSVT LOUD® intervention versus SLT and no intervention. Piloting the bespoke resource use questionnaire demonstrated that it was suitable, as the completion rate was good. The EQ-5D and the ICECAP-O were confirmed to be suitable economic outcome measures, to measure both health-related quality of life and broader aspects of capability.







## Discussion

The results of the PD COMM pilot study have shown that a large-scale trial to evaluate the efficacy and cost-effectiveness of Lee Silverman Voice Treatment versus standard NHS speech and language therapy versus control for communication problems in PD is both acceptable and feasible. The UK Medical Research Council advises that in feasibility trials of complex interventions a number of parameters should be assessed which we discuss in the following paragraphs. [14]

We originally aimed to recruit 60 patients from four centres over 18 months, but expanded to 12 centres because of slow recruitment, eventually recruiting 89 patients over 23 months.

The main reasons potential participants did not take part in the study were lack of speech problems (66%), dementia (8%), and declined consent (7%). The discrepancy between the estimates of prevalence of problems and those in the recruiting NHS clinics is interesting and important for planning the full trial, however, it is unexplained at present.

Randomisation to a no treatment arm was acceptable to patients and clinicians, and retention rates during the whole trial were high at around 90%. There was a concern that the high intensity of LSVT LOUD® might lead to a high withdrawal rate. A number of patients decided not to enter the trial because of the intensity of LSVT LOUD® which did affect recruitment rates. Of those who entered the trial, seven in the LSVT LOUD® arm either did not start therapy or stopped LSVT LOUD® early, with three of these patients withdrawing from the trial.

This compares with only one patient in the SLT arm who did not start therapy.

Our study has demonstrated the ability to successfully deliver two distinct complex SLT interventions for dysarthria associated with PD which differed in session length, time to intervention, overall dose of therapy, and intervention duration. High intensity SLT therapy is not tolerated by all patients, and the results for trials employing such approaches amongst other patient groups have been confounded by significantly higher dropout rates (than seen in our study) from the high intensity groups [35]. Intervention delivery will be a challenging issue during the substantive trial, particularly given the difficult financial situation within the National Health Service. However, delivery of the intervention in the pilot was good, with most patients starting and completing the intervention within 3 months of randomisation. It was noted that there was a slight difference in the number of patients completing treatment by 3 months (86% in the LSVT LOUD® group compared with 73% in the SLT group); we will monitor this closely within the main trial.

A battery of patient and carer reported assessments were employed in the study to evaluate the feasibility, acceptability, sensitivity, and correlation of outcome measures. Data return and completeness for all outcome measures at each time point was excellent. Correlations between the patient and therapist-assessed outcomes were varied, but patient-reported outcomes correlated well with each other ( $r > 0.7$ ). Vocal loudness did not correlate well with patient-reported measures ( $r < 0.2$ ). Previous trials have used vocal loudness as the primary

outcome measure, but it is not clear whether this captures what is important to patients in terms of communication. Our survey of a number of patients with PD showed that patients preferred and wanted a more generic overall assessment of voice problems.

Since the VHI correlated best with the therapist-assessed outcomes and the PDQ-39 is a well-validated questionnaire used in PD research, we investigated both the VHI total score and PDQ-39 communication domain as possible primary outcome measures for the main trial. The sample sizes for a full-scale trial using these outcomes (with 80% power,  $\alpha = 0.025$  (to adjust for multiple comparisons)) were 2028 patients with the PDQ-39 communication domain and 399 patients with the VHI total score. A 2000 patient trial was not feasible, and based on the VHI asking an individual to describe their voice and the effects of their voice on their life, which came out as important from our patient survey, the VHI total score was chosen as the primary outcome. To detect a 10-point difference in VHI total score at 3 months (upper SD 26.3; 80% power;  $\alpha = 0.025$ ) will require 399 patients (133 per arm). To allow for 10% drop out, a total of 450 patients (150 per arm) will be recruited. From the feasibility study, six patients can be recruited per site per year, so with 40 sites, 450 patients can be recruited in just under 2 years.

## Conclusions

PD COMM pilot is the largest trial to date of SLT in PD. The three trials in the Cochrane review included a total of only 63 patients [13] and the most recent trial of LSVT LOUD® LOUD and ARTIC versus no therapy included only 64 patients. [36] The PD COMM pilot trial demonstrated that both LSVT LOUD® and SLT may be effective in improving communication in PD, although this needs to be confirmed in an adequately powered trial. Our study established that such a substantive trial is both feasible and acceptable to PD patients and therapists treating their communication problems. A large-scale trial (PD COMM) is now underway in the United Kingdom.

## Abbreviations

AAC: Augmentative and alternative communication strategies; AIDS: Assessment of Intelligibility of Dysarthric Speech; BCTU: University of Birmingham Clinical Trials Unit; CI: Confidence intervals; EQ-5D: EuroQoL; ICECAP-O: ICECAP capability measure for older people; LSVT LOUD®: Lee Silverman Voice Treatment; LwD: Living with Dysarthria questionnaire; MCIC: Minimum clinically important change; MRC: Medical Research Council; PD: Parkinson's disease; PDQ-39: Parkinson's Disease Questionnaire-39; PDQ-Carer: Parkinson's Disease Questionnaire-Carer; RCT: Randomised controlled trial; SLT: Standard speech and language therapy; VHI: Voice Handicap Index; V-RQoL: Voice-related quality of life scale

## Acknowledgements

Site collaborators: Central Middlesex Hospital (10): Dr. Sophie Molloy\*, Ms. Cheryl Pavel, Ms. Clare Rowbottom, Ms. Elizabeth Tweedie; City Hospital Birmingham (7): Professor Carl Clarke\*, Dr. David Nicholl, Dr. Fouad Siddiqui,

Dr. Chandana Kanakaratna, Ms. Ruth Bennett, Mrs. Karen Blachford, Ms. Alison Boughey, Ms. Tracey Harrison, Ms. Marcina Novitzky Basso, Mrs. Jan Pooler, Ms. Julie Round, Ms. Alison Smith, Ms. Caroline Waszkiewicz; Fairfield General Hospital (16): Dr. Jason Raw\*, Dr. Joseph Vassallo, Dr. Aamir Ansari, Ms. Kelly Birtwell, Ms. Judith Brooke, Ms. Kristy Finnigan, Ms. Natasha Gillan, Mrs. Elizabeth Johnson, Ms. Heather Jowitt, Adam Kennedy; Harrogate District Hospital (3): Dr. Rosaria Buccoliero\*, Ms. Catherine Isles, Ms. Sue Meredith, Ms. Clare Stemp, Ms. Laura Ware; Musgrove Park Hospital (8): Dr. Simon Cooper\*, Ms. Sarah Appleton, Ms. Helen Durman, Ms. Dawn Grey, Ms. Jane (Elizabeth) Homan, Ms. Helen Meikle, Ms. Denise Sharratt, Ms. Deborah Woolven; Norfolk and Norwich University Hospital (9): Kate Richardson\*, Dr. Simon Shields, Dr. Paul Worth, Ms. Amelia Hursey, Ms. Stephanie Cooper; Poole General Hospital (6): Dr. Ralph Gregory\*, Ms. Lynette Every, Alice Grogan, Clare Hookem, Rachael Middle, Alison Bush; Royal Devon and Exeter Hospital (Wonford) (3): Dr. Raymond Sheridan\*, Dr. Gill Fenwick, Dr. Sarah Jackson, Dr. Tim Malone, Dr. Vaughan Pearce, Mr. Robert James, Ms. Nicola Harding, Mrs. Lisa Roberts, Ms. Sarah Hayes; Scarborough General Hospital (6): Ms. Louise Brown\*, Lynne Brown, Mrs. Kerry Deighton, Mr. Simon Dyer, Ms. Kirsty Haunch, Emma Temlett; Southern General Hospital (20): Dr. Donald Grosset\*, Ms. Gillian Beaton, Dr. Jennifer Burns, Dr. Anne Louise Cunningham, Dr. Graeme MacPhee, Ms. Aileen McEntee, Ms. Carol Nelson, Ms. Geraldine Ralph, Ms. Arlene Ritchie, Ms. Lindsay Shields, Ms. Bridget St George, Dr. David Stewart, Ms. Joanna Wallace, Ms. Karina Wyburn; St James' Hospital (1): Kim Brown\*, Dawn Carlyle, Sandra Jury, Chantel Ostler. University of Birmingham Clinical Trials Unit (in alphabetical order): Pui Au, Francis Dowling, Lauren Genders, David Hingley, Natalie Ives, Ryan Ottridge, Oliver Palin, Smitaa Patel, Caroline Rick, Keith Wheatley, Rebecca Woolley. University of Birmingham: Sue Jowett. PD COMM Pilot Independent Oversight Committee: Professor Nick Miller (chair), Dr. Katherine Deane, Dr. Louise Hiller, Dr. Simon Horton.

## Funding

The Dunhill Medical Trust. Grant: R192/0511.

## Availability of data and materials

The dataset analysed during the current study is available from the corresponding author on reasonable request.

## Authors' contributions

CS (chief investigator), CEC (co-chief investigator), CHS, CER, MCB, NI, SP, RW, FD, SJ, and KW designed and ran the trial. CEC recruited patients. NI, SP, and RW analysed the data. CMS, CEC, CHS, CER, MCB, NI, SP, RW, FD, SJ, and KW interpreted the data and wrote the paper. RP and HR were co-applicants and supported the trial. DK and GS supported therapy aspects of the trial.

## Ethics approval and consent to participate

West Midlands, Coventry and Warwick NHS Research Ethics Committee (11/WM/0343), and local NHS R&D approval at each site.

## Consent for publication

Patients consented to participate in the trial and the publication of anonymised data.

## Competing interests

CEC received honoraria for lectures, travel expenses for conferences, and unrestricted educational grants from AbbVie, BIAL, Britannia, Teva/Lundbeck, and UCB.

## Publisher's Note

Springer Nature remains neutral with regard to jurisdictional claims in published maps and institutional affiliations.

## Author details

<sup>1</sup>Faculty of Life Sciences and Medicine, King's College London, London, UK. <sup>2</sup>Division of Psychology and Language Science, Faculty of Brain Sciences, University College London, London, UK. <sup>3</sup>Birmingham Clinical Trials Unit (BCTU), University of Birmingham, Birmingham, UK. <sup>4</sup>Nursing, Midwifery and Allied Health Professions Research Unit, Glasgow Caledonian University, Glasgow, UK. <sup>5</sup>Parkinson's UK West Midlands Regional Branch, London, UK. <sup>6</sup>Faculty of Medicine, University of Southampton, London, UK. <sup>7</sup>Institute for Applied Health Research, University of Birmingham, Birmingham, UK. <sup>8</sup>Cancer Research UK Clinical Trials Unit (CRCTU), University of Birmingham,

Birmingham, UK. <sup>9</sup>School of Rehabilitation Sciences, University of East Anglia, Norwich, UK. <sup>10</sup>Department of Neurology, Clinical Neurology City Hospital, Sandwell and West Birmingham Hospitals NHS Trust, Dudley Road, Birmingham B18 7QH, UK. <sup>11</sup>School of Health Sciences, University of Nottingham, Nottingham, UK.

Received: 6 January 2017 Accepted: 15 December 2017

Published online: 10 January 2018

## References

- Perez-Lloret S, Negre-Pages L, Ojero-Senard A, Damier P, Destee A, Tison F, Merello M, Rascol O. Oro-buccal symptoms (dysphagia, dysarthria, and sialorrhea) in patients with Parkinson's disease: preliminary analysis from the French COPARK cohort. *Eur J Neurol*. 2012;19(1):28–37.
- Hartelius L, Svensson P. Speech and swallowing symptoms associated with Parkinson's disease and multiple sclerosis: a survey. *Folia Phoniatr. Logop*. 1994;46(1):9–17.
- Ho AK, Iansek R, Marigliani C, Bradshaw JL, Gates S. Speech impairment in a large sample of patients with Parkinson's disease. *Behav Neurol*. 1998;11(3): 131–7.
- Miller N, Allcock L, Jones D, Noble E, Hildreth AJ, Burn DJ. Prevalence and pattern of perceived intelligibility changes in Parkinson's disease. *J Neurol Neurosurg Psychiatry*. 2007;78(11):1188–90.
- Azevedo LL, Souza IS, Oliveira PM, Cardoso F. Effect of speech therapy and pharmacological treatment in prosody of parkinsonians. *Arq Neuropsiquiatr*. 2015;73(1):30–5.
- Miller N, Deane KH, Jones D, Noble E, Gibb C. National survey of speech and language therapy provision for people with Parkinson's disease in the United Kingdom: therapists' practices. *Int J Lang Commun Disord*. 2011; 46(2):189–201.
- Wight S, Miller N. Lee Silverman voice treatment for people with Parkinson's: audit of outcomes in a routine clinic. *Int J Lang Commun Disord*. 2015;50(2):215–25.
- Ramig LO, Countryman S, O'Brien C, Hoehn M, Thompson L. Intensive speech treatment for patients with Parkinson's disease: short-and long-term comparison of two techniques. *Neurology*. 1996;47(6):1496–504.
- Ramig LO, Countryman S, Thompson LL, Horii Y. Comparison of two forms of intensive speech treatment for Parkinson disease. *J Speech Hear Res*. 1995;38(6):1232–51.
- Ramig LO, Sapir S, Countryman S, Pawlas AA, O'Brien C, Hoehn M, Thompson LL. Intensive voice treatment (LSVT) for patients with Parkinson's disease: a 2 year follow up. *J Neurol Neurosurg Psychiatry*. 2001;71(4):493–8.
- Sapir S, Pawlas AA, Ramig LO, Countryman S, O'Brien C, Hoehn M, Thompson L. voice and speech abnormalities in parkinson disease: relation to severity of motor impairment, duration of disease, medication, depression, gender and age. *J Med Speech Lang Pathol*. 2001;9:213–26.
- Herd CP, Tomlinson CL, Deane KH, Brady MC, Smith CH, Sackley CM, Clarke CE. Comparison of speech and language therapy techniques for speech problems in Parkinson's disease. *Cochrane Database Syst Rev*. 2012;8: CD002814.
- Herd CP, Tomlinson CL, Deane KH, Brady MC, Smith CH, Sackley CM, Clarke CE. Speech and language therapy versus placebo or no intervention for speech problems in Parkinson's disease. *Cochrane Database Syst Rev*. 2012; 8:CD002812.
- Craig P, Dieppe P, Macintyre S, Michie S, Nazareth I, Petticrew M. Developing and evaluating complex interventions - new guidance. UK: Medical Research Council; 2008. p. 39.
- Sackley CM, Smith CH, Rick C, Brady MC, Ives N, Patel R, Roberts H, Dowling F, Jowett S, Wheatley K, et al. Lee Silverman voice treatment versus standard NHS speech and language therapy versus control in Parkinson's disease (PD COMM pilot): study protocol for a randomized controlled trial. *Trials*. 2014;15:213.
- Gibb WR, Lees AJ. The relevance of the Lewy body to the pathogenesis of idiopathic Parkinson's disease. *J Neurol Neurosurg Psychiatry*. 1988;51(6): 745–52.
- Robertson SJ, Thomson F. Speech therapy in Parkinson's disease: a study of the efficacy and long term effects of intensive treatment. *Br. J. Disord. Commun*. 1984;19(3):213–24.
- Johnson JA, Pring TR. Speech therapy and Parkinson's disease: a review and further data. *Br. J. Disord. Commun*. 1990;25(2):183–94.
- Scott S, Caird FI. Speech therapy for Parkinson's disease. *J Neurol Neurosurg Psychiatry*. 1983;46(2):140–4.
- Schulz GM, Grant MK. Effects of speech therapy and pharmacologic and surgical treatments on voice and speech in Parkinson's disease: a review of the literature. *J Commun Disord*. 2000;33(1):59–88.
- Sackley CM, Walker MF, Burton CR, Watkins CL, Mant J, Roalfe AK, Wheatley K, Sheehan B, Sharp L, Stant KE, et al. An occupational therapy intervention for residents with stroke related disabilities in UK care homes (OTCH): cluster randomised controlled trial. *BMJ*. 2015;350:h468.
- Jacobson BH. The voice handicap index (VHI): development and validation. *Am. J. Speech Lang. Pathol*. 1997;6:66–70.
- Peto V, Jenkinson C, Fitzpatrick R. PDQ-39: a review of the development, validation and application of a Parkinson's disease quality of life questionnaire and its associated measures. *J Neurol*. 1998; 245(Suppl 1):S10–4.
- Hogikyan ND, Sethuraman G. Validation of an instrument to measure voice-related quality of life (VRQOL). *J Voice*. 1999;13:557–69.
- Hartelius L, Elmqvist M, Holm R, Lovberg AS, Nikolaidis S. Living with dysarthria: evaluation of a self-report questionnaire. *Folia Phoniatr Logop*. 2008;60(1):11–9.
- Herdman M, Gudex C, Lloyd A, Janssen MF, Kind P, Parkin D, et al. Development and preliminary testing of the new five-level version of EQ-5D (EQ-5D-5L). *Qual Life Res*. 2011;20(10):1727–36.
- EuroQol Group. EuroQol—a new facility for the measurement of health-related quality of life. *Health Policy*. 1990;16(3):199–208.
- Coast J, Flynn T, Sposton K, Lewis J. Valuing the ICECAP capability index for older people. *Soc Sci Med*. 2008;67(5):847–82.
- Yorkston KM, Beukelman DR. 1981, Assessment of intelligibility of Dysarthric speech (Tigard, ORCC Publ.).
- Jenkinson C, et al. Developing a measure of Parkinson's carer quality of life (PDQ Carer). *Eur. J. Neurol*. 2011;18:644.
- Schafer J. analysis of incomplete multi-variate data. London: Chapman & Hall; 1999.
- Jenkinson C, Heffernan C, Doll H, Fitzpatrick R. The Parkinson's disease questionnaire (PDQ-39): evidence for a method of imputing missing data. *Age Ageing*. 2006;35(5):497–502.
- Tomlinson CL, Stowe R, Patel S, Rick C, Gray R, Clarke CE. Systematic review of levodopa dose equivalency reporting in Parkinson's disease. *Mov Disord*. 2010;25(15):2649–53.
- Peto V, Jenkinson C, Fitzpatrick R. Determining minimally important differences for the PDQ-39 Parkinson's disease questionnaire. *Age Ageing*. 2001;30:299–302. <https://doi.org/10.1093/ageing/30.4.299>
- Brady MC, Kelly H, Godwin J, Enderby P, Campbell P. Speech and language therapy for aphasia following stroke. *Cochrane Database Syst Rev*. 2016;6: CD000425.
- Halpern A, Ramig L, Freeman K, Spielman J: Parkinson patient reported outcomes of voice and communication pre, post and 6 months following LSVT LOUD LOUD® and LSVT LOUD ARTIC [abstract]. *Mov Disord*. 2016; 31(Suppl 2):S633–S644.

Submit your next manuscript to BioMed Central and we will help you at every step:

- We accept pre-submission inquiries
- Our selector tool helps you to find the most relevant journal
- We provide round the clock customer support
- Convenient online submission
- Thorough peer review
- Inclusion in PubMed and all major indexing services
- Maximum visibility for your research

Submit your manuscript at  
[www.biomedcentral.com/submit](http://www.biomedcentral.com/submit)

