

Barriers and facilitators of physical activity in knee and hip osteoarthritis:

Kanavaki, Archontissa; Rushton, Alison; Efstathiou, Nikolaos; Alrushud, Asma; Klocke, Rainer; Abhishek, Abhishek; Duda, Joan

DOI:

[10.1136/bmjopen-2017-017042](https://doi.org/10.1136/bmjopen-2017-017042)

License:

Creative Commons: Attribution (CC BY)

Document Version

Publisher's PDF, also known as Version of record

Citation for published version (Harvard):

Kanavaki, A, Rushton, A, Efstathiou, N, Alrushud, A, Klocke, R, Abhishek, A & Duda, J 2017, 'Barriers and facilitators of physical activity in knee and hip osteoarthritis: a systematic review of qualitative evidence', *BMJ open*, vol. 7, no. 12, e017042. <https://doi.org/10.1136/bmjopen-2017-017042>

[Link to publication on Research at Birmingham portal](#)

General rights

Unless a licence is specified above, all rights (including copyright and moral rights) in this document are retained by the authors and/or the copyright holders. The express permission of the copyright holder must be obtained for any use of this material other than for purposes permitted by law.

- Users may freely distribute the URL that is used to identify this publication.
- Users may download and/or print one copy of the publication from the University of Birmingham research portal for the purpose of private study or non-commercial research.
- User may use extracts from the document in line with the concept of 'fair dealing' under the Copyright, Designs and Patents Act 1988 (?)
- Users may not further distribute the material nor use it for the purposes of commercial gain.

Where a licence is displayed above, please note the terms and conditions of the licence govern your use of this document.

When citing, please reference the published version.

Take down policy

While the University of Birmingham exercises care and attention in making items available there are rare occasions when an item has been uploaded in error or has been deemed to be commercially or otherwise sensitive.

If you believe that this is the case for this document, please contact UBIRA@lists.bham.ac.uk providing details and we will remove access to the work immediately and investigate.

BMJ Open Barriers and facilitators of physical activity in knee and hip osteoarthritis: a systematic review of qualitative evidence

Archontissa M Kanavaki,^{1,2} Alison Rushton,^{1,2,3} Nikolaos Efstathiou,^{4,8} Asma Alrushud,^{1,5} Rainer Klocke,⁶ Abhishek Abhishek,⁷ Joan L Duda^{1,2}

To cite: Kanavaki AM, Rushton A, Efstathiou N, *et al*. Barriers and facilitators of physical activity in knee and hip osteoarthritis: a systematic review of qualitative evidence. *BMJ Open* 2017;**7**:e017042. doi:10.1136/bmjopen-2017-017042

► Prepublication history and additional material for this paper are available online. To view these files, please visit the journal (<http://dx.doi.org/10.1136/bmjopen-2017-017042>).

Received 28 March 2017
Revised 12 July 2017
Accepted 31 July 2017

ABSTRACT

Physical activity (PA), including engagement in structured exercise, has a key role in the management of hip and knee osteoarthritis (OA). However, maintaining a physically active lifestyle is a challenge for people with OA. PA determinants in this population need to be understood better so that they can be optimised by public health or healthcare interventions and social policy changes.

Objectives The primary aim of this study is to conduct a systematic review of the existing qualitative evidence on barriers and facilitators of PA for patients with hip or knee OA. Secondary objective is to explore differences in barriers and facilitators between (1) lifestyle PA and exercise and (2) PA uptake and maintenance.

Methods Medline, Embase, Web of Science, Cumulative Index to Nursing and Allied Health Literature, SPORTDiscus, Scopus, Grey literature and qualitative journals were searched. Critical Appraisal Skills Programme—Qualitative checklist and Lincoln and Guba's criteria were used for quality appraisal. Thematic synthesis was applied.

Findings Ten studies were included, seven focusing on exercise regimes, three on overall PA. The findings showed a good fit with the biopsychosocial model of health. Aiming at symptom relief and mobility, positive exercise experiences and beliefs, knowledge, a 'keep going' attitude, adjusting and prioritising PA, having healthcare professionals' and social support emerged as PA facilitators. Pain and physical limitations; non-positive PA experiences, beliefs and information; OA-related distress; a resigned attitude; lack of motivation, behavioural regulation, professional support and negative social comparison with coexercisers were PA barriers. All themes were supported by high and medium quality studies. Paucity of data did not allow for the secondary objectives to be explored.

Conclusion Our findings reveal a complex interplay among physical, personal including psychological and social-environmental factors corresponding to the facilitation and hindrance of PA, particularly exercise, engagement. Further research on the efficacy of individualised patient education, psychological interventions or social policy change to promote exercise engagement and lifestyle PA in individuals with lower limb OA is required.

Trial registration number CRD42016030024.

Strengths and limitations of this study

- This systematic review is the first to identify, appraise and synthesise the existing qualitative research on barriers and facilitators to physical activity (PA) in knee and hip osteoarthritis.
- Rigorous methods have been applied, informed by the Centre for Reviews and Dissemination and Cochrane Qualitative Research Methods Group guidelines and reported according to the Preferred Reporting Items for Systematic Reviews and Meta-Analyses and Enhancing Transparency in Reporting the Synthesis of Qualitative Research statements.
- The majority of the included studies (7/10) focused on exercise barriers and facilitators; therefore, barriers and facilitators of more general lifestyle PA might not be fully captured.
- Papers written in English-language only were included.

Osteoarthritis (OA) is the the most common joint disease and main cause of disability in older adults.¹ OA management focuses on analgesia and non-pharmacological modalities such as exercise and weight loss.² Exercise, that is, structured and purposeful physical activity (PA),³ reduces pain and improves function in people with knee or hip OA.^{4–9} However, despite the positive effects on symptoms, exercise interventions do not promote sustained behaviour change.^{10–11} Just like exercise, PA associates with better physical function^{12–14} and even modest increase in PA (from sedentary to light intensity PA) improves arthritis pain.¹⁵ At the population level, it is simpler to promote PA in people with painful OA for example, via radio and television, than promoting exercise as that will require a greater behaviour change and may need continued support of trained physiotherapists. However, existing evidence suggests that people with lower limb OA have such low PA levels that they



CrossMark

For numbered affiliations see end of article.

Correspondence to

Archontissa M Kanavaki;
amk377@bham.ac.uk



gain no health benefits from it.^{16–18} Thus, there is a need to understand the determinants of reduced PA in people with symptomatic OA so that these can be optimised to promote PA.

The disease-specific determinants of PA in those with lower limb OA, for example, symptom severity and physical function^{19–23} are relatively well understood, but the psychological, social and environmental determinants of PA in OA have not been adequately examined.^{21 22} Understanding these factors is of great importance as pain makes PA an aversive experience leading to activity avoidance^{24–27} and pain is influenced by psychological and environmental factors.^{18 25 28 29} A recent scoping review identified several psychological and environmental barriers and facilitators of exercise in people with hip or knee OA.²³ However, scoping reviews lack the methodological rigour of systematic reviews (SRs).³⁰ A SR of qualitative data holds promise for a thorough and in-depth understanding of the modifiable psychosocial factors predicting PA behaviour.

The objectives of this study were to: identify, appraise and synthesise the existing qualitative evidence on barriers and facilitators to PA in hip or knee OA; explore differences in barriers and facilitators between lifestyle PA accrued in daily activities and those reported in regard to structured exercise programme specifically and between PA uptake and maintenance.

METHODS

This SR was registered with the International Prospective Register of SRs (CRD42016030024) and its protocol reported previously.³¹ The reporting follows the Preferred Reporting Items for SRs and Meta-Analyses and the Enhancing Transparency in Reporting the Synthesis of Qualitative Research statements (see online supplementary file 1).

Population, Intervention, Comparators, Outcomes were adapted to inform eligibility

Population

Study participants were adults with physician diagnosed or radiographic (Kellgren and Lawrence grade ≥ 2) hip or knee OA or met classification criteria for OA at these joints.³² If a study included people with other arthritis, for example, rheumatoid arthritis, they were included if people with knee or hip OA were the largest proportion. Studies with participants awaiting total joint replacement were excluded.

Outcomes

The perceptions of barriers and facilitators that influence uptake or maintenance of PA were the study outcomes. Studies were included if they explored the factors/barriers/facilitators/motivation to engagement in PA or addressed the experience of people with hip or knee OA regarding PA or exercise.

Study designs

Qualitative or mixed methods studies.

Language

Published in English.

Information sources

Medline (Ovid Medline(R) in-process and other non-indexed citations and Ovid Medline(R) 1946 to present, Ovid), Embase (1974 onwards, Ovid interface), PsychINFO (1967 onwards, OVID), Web of Science, Cumulative Index to Nursing and Allied Health Literature, SPORTDiscus and Scopus were searched up to 31 of December 2015. Grey literature sources were explored, that is, OpenGrey, National Health Service evidence. The search strategy was complemented by hand search of qualitative-research-centred journals screening of references of included articles and contacting researchers active in the field.

Search

The search strategy contained exhaustive keyword combinations for each of the four concepts of interest, that is, knee or hip OA; PA/exercise; facilitators, barriers, motivation, uptake, maintenance; qualitative studies (see online supplementary file 2).

Study selection

The search and study selection was conducted by two researchers independently (AMK and AsA). Endnote V.X7 was used for data management. Citations and abstracts were imported and duplicates removed. After title/abstract screening, full text of potentially relevant studies were assessed and additional information was sought from authors where necessary. If consensus was not reached between the two researchers, a third reviewer was consulted (AR).

Data collection and appraisal

All text under the sections of 'results' and 'findings' of the selected studies was considered as data items. Where findings and discussion were presented together, the whole section was considered for analysis. Data items were entered into and managed with NVivo V.11 qualitative data analysis software (QSR International).

Quality appraisal aimed to assess the reporting, methodological rigour and conceptual consistency of the included studies³³ and to identify and discard low-quality studies. Two approaches were used, which complement each other³¹: (a) the Critical Appraisal Skills Programme Qualitative Checklist.³⁴ Studies were rated as high, medium and low quality if they met ≥ 8 , 5–7 and 4 or fewer criteria, respectively; (b) the evaluative criteria of credibility, transferability, dependability and confirmability that assess the trustworthiness of the study. Studies were rated high, medium, and low quality if they met ≥ 3 , 2, or one and less criteria.³⁵ Two reviewers independently appraised the selected studies (AK and NE).



The phenomenon of interest was the description and interpretation of OA patients' perceptions and experiences regarding what facilitates, motivates or hinders them from engaging in PA. In addition, observed differences in facilitators and barriers to uptake and maintenance of PA (exercise and lifestyle PA) were also included.

Synthesis of results

Data were analysed by thematic synthesis.³⁶ First, authors' interpretations and informants' quotes were coded separately, line by line. Codes of original themes, subthemes and codes clearly referring to other types of arthritis where excluded from the synthesis. Next, descriptive themes were formed through code merging and grouping in a highly iterative process, creating a hierarchical tree. To form the analytical themes, a data-driven analysis was initially conducted to allow an inductive interpretation. A group (AMK, NE, AR, JLD) review meeting was held and the fit of this synthesis within theoretical models of behaviour change, motivation, human development and health was examined. The findings showed good fit with the biopsychosocial model of health,³⁷ which was chosen to facilitate a more comprehensive and meaningful interpretation of the data and reporting of the findings. The descriptive themes were then re-examined and refined. At this point, the research question was introduced to help infer the barriers and facilitators under the three domains of the biopsychosocial model. To enhance the credibility of the findings, the synthesis was conducted by AMK and checked independently by NE.

Additional analysis

The descriptive study characteristics were examined in relation to the secondary research objectives. Due to insufficient evidence, no further analysis was conducted.

RESULTS

Study selection

Five thousand four hundred and forty-nine studies were identified, and after removing duplicates, 2657 titles or/and abstracts were screened and 51 full-text papers were assessed. Seven authors were contacted for further information. Information was not provided for two studies, which were excluded. Ten studies were included^{38–47} (figure 1).

Study characteristics

There were 173 participants, mainly middle aged to older, and female. Nine of 10 studies reported qualitative methodologies (table 1).

Appraisal of studies

All selected studies were of medium or high quality (table 2). The research design and data analysis were not clear or well described in half of the studies and very few studies had clearly identified the relationship between the researcher and participants. Credibility,

transferability and confirmability were met by almost all studies, although dependability only by two.

Synthesis of results

Barriers and facilitators are presented under the three conceptual domains, that is, physical health, intrapersonal factors and social-environmental factors. Barriers and facilitators that appeared in at least three studies are reported to keep a balance between richness and applicability of the findings (table 3; see online supplementary file 3 for supporting references). When comparing exercise and PA focused studies, the themes were similar in context and equally represented in most cases. Where there are differences, these are reported.

Physical health

Barriers

Physical barriers and limitations. Pain is aversive, stressful and inherent to living with OA.^{38–46} It was mentioned as part of daily experience^{44 45} or in relation to particular types of activities.^{39–41 43 45 46} Along with fatigue and stiffness,^{43–45} these symptoms hindered the ability to engage in PA. There was a vicious cycle between symptoms and lack of exercise.^{40 41} At an advanced stage of OA, PA was inhibited.⁴¹ OA symptoms were aggravated by obesity and made PA more difficult.^{38 41 44} Participants also discussed their sense of limited physical capacities and that one's body cannot manage PA requirements, resulting in loss of previous activity patterns.^{41–45} For example, some talked about the need to choose between activities because of limited energy.⁴³ Old age and lack of physical fitness were also reported as perceived PA barriers.^{41 44}

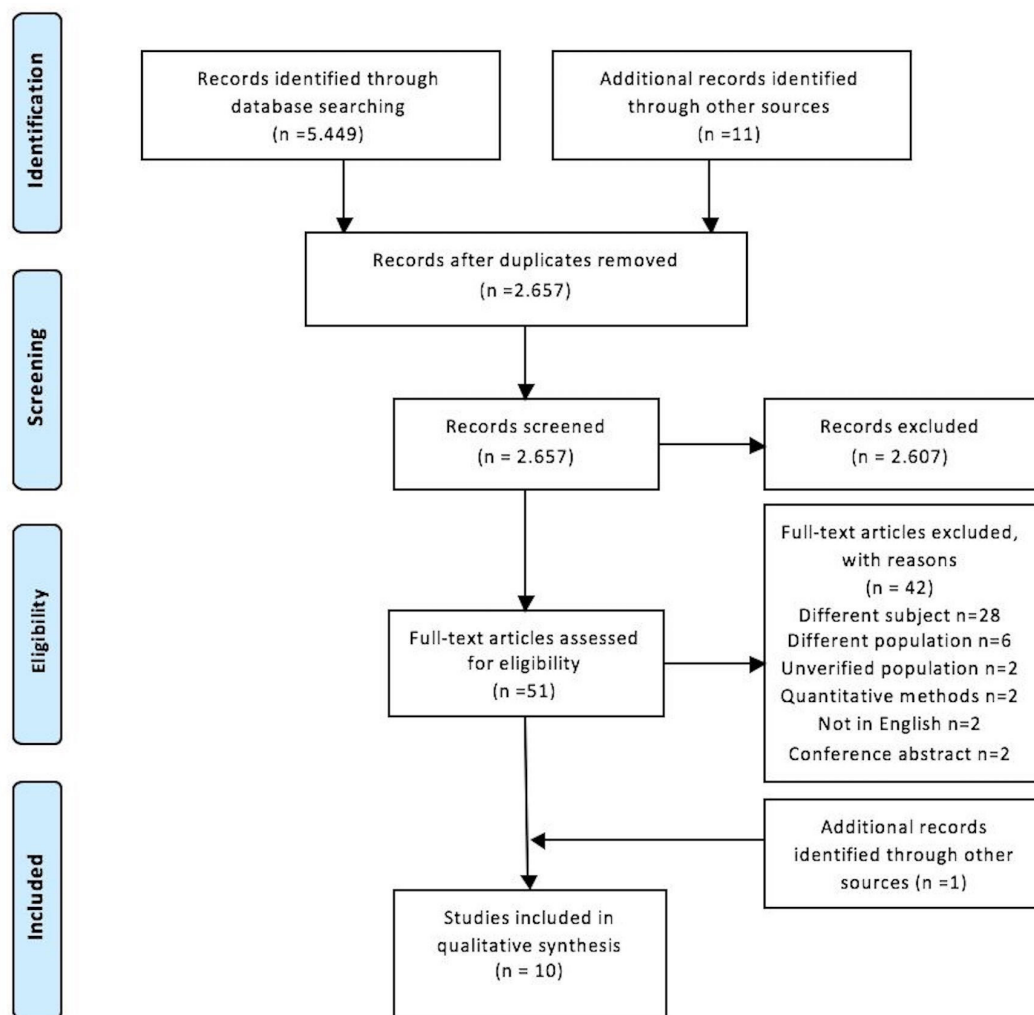
Facilitators: PA for mobility, symptom relief and health

Among those who held a physically active lifestyle maintaining or regaining their mobility was a strong motive for PA.^{38 40 44 45 47} In most cases, the aim was to keep functioning,^{38 41 43 46} in some it was so specific as to prevent joint surgery.^{40 47} Pain relief is another strong motive for being physically active and active individuals were more likely those who had experienced pain reduction.^{38 40 44 45 47} A few informants presented a 'no pain, no maintenance' pattern, where pain cessation was followed by dropping exercise.^{38 47} Improvements in other symptoms, such as stiffness and joint stability, were sufficient reasons for being active, even when pain remained.^{38 44} Maintaining good general health and physical condition were also reasons for being physically active.^{40 41 43 44 46} This facilitator was closely linked to a positive, beneficial PA experience and subsequent positive attitude towards PA, which is a crucial facilitator discussed below.

Intrapersonal/psychological factors

Experience and beliefs about exercise

Facilitators. Exercise as beneficial. Experiencing benefits from exercise participation, which in most of the studies was related to engagement in an exercise intervention, helped shaping positive beliefs and motivated individuals towards continuing exercise.^{38–41 44 46 47} A sense of



From: Moher D, Liberati A, Tetzlaff J, Altman DG, The PRISMA Group (2009). Preferred Reporting Items for Systematic Reviews and Meta-Analyses: The PRISMA Statement. *PLoS Med* 6(7): e1000097. doi:10.1371/journal.pmed.1000097

For more information, visit www.prisma-statement.org.

Figure 1 Study selection Preferred Reporting Items for Systematic Reviews and Meta-Analyses flow diagram.

psychosomatic well-being was an important component of this theme.^{39–41 44 46} Improvement in coping with OA⁴⁶ and sleep⁴⁴ were mentioned.

Knowledge about exercise in OA. Accurate knowledge of the importance of exercise in OA, acquired through healthcare, physiotherapy and exercise interventions, was an important facilitator.^{40 44–46} It led to awareness regarding exercise benefits and helped in making correct interpretations of exercise experiences.

Both the above themes emerged from exercise-focused studies only.

Barriers. PA as non-effective, harmful or of doubtful effectiveness. The belief that PA does not help or might further deteriorate their condition hindered people from being active.^{38 40 41 43 45 46} Experiencing activity-related pain in the joint, for example, was often interpreted as PA exacerbating OA, which stemmed from the understanding

of OA as a ‘wear and tear’ condition.^{41 43 46} Not experiencing the anticipated beneficial effects during exercise interventions was a reason for distrust in PA as an effective means of treatment.^{38 40 41 46} Also, early negative experiences with sports resulted in exercise avoidance.⁴⁴

OA beliefs. Beliefs that nothing can be done regarding the condition^{41 44 46} and that overuse was the cause of OA^{38 41 43} were linked to less inclination towards being physically active. In one study, the relationship between PA and OA was discussed as bidirectional.⁴³ These beliefs were mostly reported in exercise-focused studies (four exercise studies with one PA-focused study also revealing such beliefs).

Daily activities as PA. This theme revolved around beliefs about non-leisure PA.^{41 43 44 46} However, there were no consistent patterns across studies to be clearly classified as barriers or facilitators. For example, non-leisure activities

Table 1 Study characteristics

Study	Objectives	Country	Participants (number; diagnosis/OA site; characteristics; sampling)	Methods (data collection and analysis)	Findings	Relevance to secondary objectives (exercise vs lifestyle PA; uptake vs maintenance)
Campbell <i>et al</i> ³⁸	Compliance with a physiotherapy intervention.	UK	20 participants; Knee OA 14 female, age >45; Maximum variation sampling	Interviews; constant comparative method	Factors related to compliance: moral obligation towards the physiotherapist (initial compliance); viewing exercise as beneficial, fitting exercises in daily life, perceived symptom severity, arthritis and comorbidity attitudes, exercise and OA experiences (continued compliance)	Exercise regime Both initial and continued compliance explored
Fisken <i>et al</i> ³⁹	Reasons for ceasing participation in aqua-based exercise	New Zealand	11 participants; various OA sites, 10 hip or knee; female; age >60; purposeful sampling	Focus groups; general inductive thematic approach	Main barriers: lack of appropriate classes and knowledgeable instructors, increase in pain, cold water and facilities	Exercise regime No uptake-maintenance distinction
Hammer <i>et al</i> ⁴⁰	Self-efficacy in relation to PA maintenance among maintainers and non-maintainers postintervention	Denmark	15 participants; hip OA; 8 female, age 65–74; Criterion-based purposeful sampling	Semistructured interviews; directed content analysis	Themes: mastery experiences, vicarious experiences, verbal persuasion, physiological and emotional states, altruism	Exercise regimes No uptake-maintenance distinction
Hendry <i>et al</i> ⁴¹	Views towards exercise, determinants of acceptability and motivation barriers	UK	22 participants; knee OA; 16 female, age 52–86; purposeful sampling (inclusion/exclusion criteria)	Interviews and focus group; principles of framework method of qualitative analysis	Exercise participation determinants: perception of physical capacity, beliefs about exercise, motivational factors	Exercise (broad definition) No uptake maintenance distinction
Kabel <i>et al</i> ⁴²	Pain, social pressure and embarrassment in activity-related decision-making.	USA	10 participants; knee OA; seven female, mean age 60; sampling method not clearly reported	Interviews; grounded theory or constant comparative method	Four PA-related patterns: Risk pain and embarrassment; risk pain, avoid embarrassment; avoid pain, risk embarrassment; avoid pain and embarrassment	PA (living with OA), No uptake maintenance distinction
Kaptein <i>et al</i> ⁴³	PA perception in the context of managing arthritis and multiple roles	Canada	40 participants; 17 hip/knee OA, 16 RA, four both OA and RA, three other OA sites; 24 female, ages 29–72; purposeful sampling	Focus groups; qualitative content analysis	Positive PA perceptions, complex relationship between PA, arthritis and life roles (PA as potential cause of arthritis, reciprocal relationship, harms and benefits, perceived choices)	PA No uptake maintenance distinction
Petursdottir <i>et al</i> ⁴⁴	Exercise experience. What determines whether people exercise	Iceland	12 participants; various OA sites, 10 hip or knee; 9 female, mean age 67 (50–81); purposeful sampling	Interviews; phenomenology (Vancouver School)	Barriers/facilitators: internal (individual attributes and exercise experiences) and external (social and physical environment)	Exercise No uptake maintenance distinction
Stone and Baker ⁴⁵	Facilitators and barriers to regular PA	Canada	15 participants, hip or/and knee OA; 9 female, age 30–85; snowball sampling.	Semistructured interview; interpretational analysis	Facilitators: pain relief, clear communication from healthcare professionals, social support. Barriers: pain, psychological distress, lack of support from healthcare professionals	PA No uptake maintenance distinction
Thorstensson <i>et al</i> ⁴⁶	Underlying processes leading to response or non-response to exercise as treatment	Sweden	16 participants, knee OA; 6 female, age 39–64; purposeful sampling	Interviews; phenomenography	Themes: to gain health, to become motivated, to experience the need for support, to experience resistance	Exercise No uptake-maintenance distinction
Veenhof <i>et al</i> ⁴⁷	Factors that explain differences between patients who integrated activities in their daily lives or not	The Netherlands	12 participants; hip or knee OA; 8 female, ages 51–80; deliberate sampling for heterogeneity	Interviews; grounded theory	Long-term goals and active involvement in the intervention related to greater adherence	Exercise No uptake maintenance distinction

OA, osteoarthritis; PA, physical activity; RA, rheumatoid arthritis.

**Table 2** Appraisal of studies

CASP Qualitative Checklist	Campbell et al ³⁸	Fisken et al ³⁹	Hammer et al ⁴⁰	Hendry et al ⁴¹	Kabel et al ⁴²	Kaptein et al ⁴³	Petursdottir et al ⁴⁴	Stone & Baker ⁴⁵	Thorstensson et al ⁴⁶	Veenhof et al ⁴⁷
1. Was there a clear statement of the aims of the research?	6/10	6/10	6/10	9/10	6/10	7/10	9/10	9/10	7/10	6/10
2. Is a qualitative methodology appropriate?	✓	✓	✓	✓	✓	✓	✓	✓	✓	✓
3. Was the research design appropriate to address the aims of the research?	?	✓	✓	✓	?	x	✓	✓	?	?
4. Was the recruitment strategy appropriate to the aims of the research?	✓	?	✓	✓	✓	✓	✓	✓	?	✓
5. Was the data collected in a way that addressed the research issue?	✓	?	x	✓	?	✓	✓	✓	?	✓
6. Has the relationship between researcher and participants been adequately considered?	?	?	x	✓	?	x	✓	?	✓	?
7. Have ethical issues been taken into consideration?	?	✓	✓	?	✓	✓	?	✓	✓	✓
8. Was the data analysis sufficiently rigorous?	?	?	?	✓	?	?	✓	✓	✓	✓
9. Is there a clear statement of findings?	✓	✓	?	✓	✓	✓	✓	✓	✓	✓
10. How valuable is the research?	✓	✓	✓	✓	✓	✓	✓	✓	✓	?
Trustworthiness	✓	✓	✓	✓	✓	✓	✓	✓	✓	✓
Transferability	✓	✓	✓	✓	✓	✓	✓	✓	✓	✓
Dependability	✓	✓	✓	✓	✓	✓	✓	✓	✓	✓
Confirmability	✓	✓	✓	✓	✓	✓	✓	✓	✓	✓

✓, yes; x, no; ?, uncertain; CASP, Critical Appraisal Skills Programme.

**Table 3** Barriers and facilitators: themes, subthemes and number of supporting references

Domain	Major themes	Barriers	No of studies	No of references	Facilitators	No of studies	No of references
Physical health		Physical barriers and limitations (pain and other symptoms; perceived functional limitations)	9	94	PA for mobility, symptom relief and health (PA to maintain mobility; PA for symptom relief; PA for health)	9	34
Intrapersonal/psychological factors	Experience and beliefs about PA and OA	PA as non-effective, harmful or of doubtful effectiveness	6	36	Exercise as beneficial	7	60
		OA beliefs	5	17	Knowledge about exercise	3	8
	Behavioural regulation and attitude	Resigned to OA	5	10	Keep going despite OA	7	18
		Lack of motivation	6	14	Adjustments, prioritisation and personal effort (adjusting PAs; prioritising PA; personal responsibility and effort in being physically active)	9	41
		Lacking behavioural regulation	4	23			
	Emotions	OA-related distress	6	23	Enjoyment	4	22
Social environment	Health professionals	Lack of advice and encouragement from health professionals	5	22	Support from health professionals	8	50
	Social support	Social comparison as demotivating	5	15	Social support facilitating PA	7	43
		Lack of social support	4	8			

OA, osteoarthritis; PA, physical activity.

were viewed as a sufficient amount of PA by some^{41 44 46} and as insufficient by others.⁴¹

Behavioural regulation and attitude

Facilitators. Keep going despite OA. Authors' interpretations related to this concept varied, for example, determination to take control of arthritis,⁴¹ perseverance,⁴⁶ personality traits of adaptability and initiative,⁴⁴ belief that there are 'things patients can do' about their OA³⁸ and motivation towards long-term goals.⁴⁷ The importance of keeping a positive attitude was also discussed.^{43 44} In two studies, the relevant participant quotes were presented under the themes 'risking embarrassment'⁴² and 'bidirectional impact between PA and arthritis'.⁴³

Adjustments, prioritisation and personal effort. Physically active individuals described how they were making short or long-term modifications to their PA,³⁹⁻⁴⁴ such as finding a type of exercise that was suitable for their physical abilities,^{39-41 44} adjusting PA intensity to their current condition,^{40 42 44} even changing their job.⁴³ This task of continuously adjusting PAs was quite demanding.⁴⁴ Prioritising PA and fitting it into a routine was mentioned by a

number of physically active participants and reflected the importance they assigned to PA.^{38 41 46 47} Active participants also acknowledged they were the main agents in managing their condition and they were consciously making efforts to stay active.^{38 41 43 46}

Barriers. Lack of motivation. Participants in different studies referred to a lack of motivation or goal, laziness and boredom towards exercise.^{38 40 41 44 46 47} These type of barriers were reported in the exercise-focused studies only and were not further explored.

Lacking behavioural regulation. In the face of the demands of other life roles and a busy schedule, especially family related, inactive participants were not prioritising PAs.^{38 41 43 46} In two studies, informants referred to not finding a PA suitable for their current condition.^{39 41} In one study, low self-regulation was the reason given for not exercising regularly.⁴¹

Resigned to OA. In half of the studies, informants expressed a resigned attitude towards making an effort to be active.^{38 41 44-46} Reflecting fatalistic beliefs about OA and feelings of helplessness, this attitude was linked to attenuated motivation for being physically active.

Emotions

Facilitators. Enjoyment. Enjoying exercise in general or a particular type of exercise facilitated its continuation.^{39 41 44} This facilitator of engagement emerged in the exercise-focused studies only.

Barriers. OA-related distress. Living with OA means adjusting to a reality of decreased physical functioning and in several cases, participants talked about this experience of giving up activities, being unable to meet life roles and daily demands as distressing or embarrassing.^{38 40 42–45} Mental stress,⁴⁰ extreme unhappiness and paralysing fatigue,⁴⁴ feeling broken and mentally depressed,⁴⁵ weakness⁴³ were used.

Social environment

Health professionals

Facilitators. Support from health professionals. Physiotherapists exerted great influence on the patients' PA/exercise habits.^{38 40 41 44 45 47} Providing instructions, education, encouragement and rapport with the patient were means of facilitating exercise. Advice and prescription by doctors was another facilitator.^{41 44} Supervision during exercise was valued.^{38–41 46 47} Good supervision gave participants the reassurance that what they were doing was appropriate and good for their body,⁴¹ which they needed,⁴⁵ and motivated them to exercise.^{38 40 46 47} Support from health professionals was reported in four exercise studies and one PA focused.

Barriers. Lack of support from health professionals. Ambiguous, no or conflicting information from doctors regarding PA was a barrier.^{38 41 44 45} In one study, the instructor not having specialised OA training was the reason that led participants to discontinue their exercise.³⁹

Social support

Facilitators. Social support facilitating PA. Social support as a facilitator was mainly discussed in the context of exercising in a group, as well as support from family and friends. Feeling comfortable and motivated, even inspired when exercising with people of similar physical abilities and age emerged as an advantage of PA programmes.^{38–41 43 45} This was of particular importance when someone was first introduced to PA.⁴⁰ Opportunities to socialise were also an advantage of group PA.^{39 41} In addition, psychological and instrumental support from family and friends emerged as an asset of physically active participants, taking the form of active encouragement, expression of interest and understanding, an exercise buddy or role model.^{40 43–45} Community-based support was mentioned as PA promoting.⁴⁵ This theme stemmed equally from exercise and PA-centred studies, although the focus of the former was on group exercise and the latter on important others' support for an active lifestyle.

Barriers. Social comparison as demotivating. Although this concept did not explicitly appear as an authors' interpretation, it emerged from informants' quotes. Being unable to keep up with others when participating in PA was a PA barrier as it provoked feelings of embarrassment

and distress.^{38–42} This barrier was reported in four exercise studies and one PA focused.

Lack of social support. The lack of social support from peers and family as a barrier was discussed in relation to lack of understanding and encouragement from the person's family and social^{38 43 44} and work environment.⁴³

Physical environment

Barriers. The cost of exercise classes,^{39 43 44} limited accessibility^{44 46} and lack of availability of appropriate modes,^{44 45} as well as cold weather and issues regarding safety³⁹ were the reported environmental barriers to PA.

DISCUSSION

This SR is the first to synthesise the existing qualitative research on barriers and facilitators to PA in knee and hip OA. Pain and physical limitations, absence of positive PA experiences and beliefs, resigned attitude and distress due to OA, lack of behavioural regulation, lack of support from health professionals and negative social comparisons when exercising in a group were important PA barriers. Symptom relief and mobility, positive exercise experiences and beliefs, knowledge, enjoying exercise, a 'keep going' attitude, adjusting and prioritising PA and having professional and social support were important PA facilitators. Overall, the findings are consistent with known PA correlates in exercise psychology,⁴⁸ theories of behavioural change⁴⁹ and results emanating from existing SRs in general (ie, non-OA specific) populations that share common characteristics with OA patients.^{50–52} Present findings also outline a unique profile of PA barriers and facilitators in lower limb OA.

Factors related to physical health, specifically pain and physical function, were the most consistently reported. This indicates that OA has a central role and impact in people's lives and experiences, which is in line with previous qualitative findings that pain discussions by people with OA differ in frequency and quality in comparison to healthy individuals.⁵³ Importantly, physical barriers are reported both by active and inactive people. Therefore, physical barriers alone cannot explain PA behaviour with the exception of patients at very advanced stages of OA.⁵⁴ Intrapersonal and social variables are crucial in PA behaviours reported earlier.⁵²

The identified barriers and facilitators are not stand-alone and independent entities but manifest a complex interplay. Personal experience, knowledge and beliefs about PA, exercise and OA were interwoven concepts and formed the basis of PA behaviour. Experiencing benefits from participation in an exercise programme, which was the case in most of the included studies, shapes a positive attitude towards PA.^{50 51 55–57} Accurate knowledge regarding PA, exercise and OA bolstered a positive interpretation of and predisposition towards PA experience. Viewing pain as manageable versus inevitable elicited different behaviors^{58 59} and, not surprisingly, patient education is a core component of healthcare and



OA management.⁶⁰ Support from health professionals becomes crucial as they can provide rationale and motivation for PA⁵⁵ and shape the patients' health experience.⁵³ The above factors and available social support are not independent from, but influence motivation, attitude and behavioural regulation.

Most of the PA barriers and facilitators emerged under the psychological/intrapersonal domain and were mostly OA related. The data analysis allowed for new insights into the original studies, such as the emerging theme of OA-related distress and two distinct patterns in attitude, beliefs, motivation and behavioural regulation—one facilitating and the other hindering PA. Pain and its multifaceted impact is a source of distress in OA.²⁴ In turn, anxiety and depressive symptoms, which are more prevalent in people with arthritis,⁶¹ are predictors of poorer function^{62 63} and pain.^{28 64–66} Still cognitive processes underlying the distinct patterns are missing, for example, what distinguishes those who, for a given level of structural disease-severity and OA-related pain, exhibit a positive attitude and behavioural regulation from those who are resigned, cope ineffectively with OA stress and lack self-regulation? Explanations involving distinguishing processes and participant characteristics might lie in theoretical frameworks of behaviour change and health, which are absent in the included studies, with one exception.⁴⁰ For example, self-efficacy, self-determination and need satisfaction are precursors of behaviour in theories which have been applied to predicting and promoting PA,^{67 68} whereas sense of control is a common concept in the stress and coping literature.⁶⁹ Future research should make use of theoretical knowledge and approaches to enable targeted and more effective research and interventions.⁷⁰

All the findings reported were grounded in the three studies that scored 'high' at both sets of quality criteria,^{41 44 45} along with the seven medium quality studies, which confirms their trustworthiness. However, aspects of methodology were poorly reported or explored in the selected studies, particularly those of medium quality. A consideration of the researcher–participant relationship and employing an external auditor for the decision trail (dependability) should be used to increase confidence in the findings.

The SR findings hold implications for clinical practice. All healthcare professionals who manage people with lower limb OA have a key role in facilitating PA through their advice, attitude towards OA and decision to seek multi-disciplinary input for example, from physiotherapy. Even without directed advice to increase PA, health and condition-related advice and a supportive stance from healthcare professionals can influence decisions related to PA engagement.⁷¹ In the absence of education, people with OA tend to draw from lay and often fatalistic beliefs of PA and exercise in OA. An individual assessment of the experienced impact of pain and disability, personal attitudes and circumstances, educating about the role of PA in OA management, offering feasible yet specific PA prescription and encouragement can have an impact on the persons' PA and exercise behaviour. Pain and stress-related coping

strategies, guidance through exercise prescription and effective communication are the main components of established arthritis self-management programmes.⁷² Increasing the time designated to each patient within the healthcare system could allow for such practices to take place. Counselling referral and online educational tools could also affect PA behaviour.

Based on the available qualitative evidence, it was not possible to adequately explore the secondary SR questions, an issue which has been previously reported.^{52 73} Only three studies focused on lifestyle PA, which is surprising considering the paradigm shift in the health literature from exercise promotion to a combination of PA promotion and sedentary time reduction.⁷⁴ Also, only one study made the distinction between PA uptake and maintenance, despite the recognition that these two stages entail different determinants.^{67 75 76} In the case of people living with OA, the factors and processes leading to uptake and maintenance of overall PA need to be further explored and understood.

This SR has applied rigorous methods and provides an in-depth and meaningful understanding of the phenomenon of interest based on the accumulated existing qualitative evidence, thus moving one step forward from existing SRs.^{21 22} Gaps in the existing literature were also identified. With regards to data synthesis, coding participants' quotes and authors' interpretations separately allowed aspects of the phenomenon not captured by the original studies to come to light. During data synthesis, peer review by a multi-disciplinary team took place to enhance credibility. The main reviewer's background is clinical psychology, which might be reflected in the emphasis on the 'psychological' component of PA barriers and facilitators.

There are certain limitations to this study. The majority of the included studies were exercise focused, therefore might not accurately or fully represent barriers and facilitators to lifestyle PA (of which engaging in structured exercise programme is type or form). Due to resource limitations, studies not written in English were excluded. Two relevant studies were also excluded because they were in a conference abstract form and additional data were not available.^{77 78} Lastly, due to the nature of the evidence, directions of the relationships and interactions among the identified factors cannot be drawn.

In summary, there is a complex interplay among the physical, intrapersonal, psychological and socio environmental barriers and facilitators of exercise and PA that bears similarities with other chronic diseases, but also includes characteristics specific to OA. Personal experiences, beliefs, attitudes and emotions, as well as the social environment, that is, healthcare and social support, are dynamic factors shaping PA behaviour. Considering that OA becomes more prevalent with age, it is important and challenging to make sustained lifestyle changes that will have a positive impact on an individual as well as at a healthcare system level. With the aim of identifying effective practices to help people with OA become more active, future research should involve behavioural intervention studies to address the factors identified above.

AMENDMENTS TO THE PROTOCOL

Confidence in the synthesised findings was not used due to ambiguities in the suggested process (ConQual⁷⁹), that is, regarding transparency and satisfactory justification of the assessment outcome. However, the studies-sources of each finding were checked. The three studies scoring 'high' quality at both sets of criteria informed all themes, along with the medium quality studies.

Kappa statistic was not measured. The two researchers run the searches independently for all databases following the Medline search strategy. Because of differences in operators and options at different search engines, the number of studies differed at the stages preceding study selection. Each reviewer's full text selection stage was updated by the other researcher's findings. At this stage agreement was met for all included studies.

Author affiliations

¹School of Sport, Exercise and Rehabilitation Sciences, College of Life and Environmental Sciences, University of Birmingham, Birmingham, UK

²MRC-Arthritis Research UK Centre for Musculoskeletal Ageing Research, University of Birmingham, Birmingham, UK

³Centre of Precision Rehabilitation for Spinal Pain (CPR Spine), University of Birmingham, Birmingham, UK

⁴Nursing, Institute of Clinical Sciences, Medical School, University of Birmingham, Birmingham, UK

⁵Department of Health Rehabilitation Sciences, King Saud University, Riyadh, Saudi Arabia

⁶Department of Rheumatology, Dudley Group NHS Foundation Trust, Dudley, UK

⁷Academic Rheumatology Unit, School of Medicine, University of Nottingham, Nottingham, UK

⁸School of Nursing, University of Ottawa, Ottawa, Canada

Contributors Study concept and design: JLD, AR, AMK, RK, AbA, NE. Searches: AMK, AsA. Study appraisal: AMK, NE. Data analysis: AMK, checked by NE. Data interpretation: AMK, checked by JLD, AR, NE. Manuscript draft: AMK. Manuscript review and input: JLD, AR, AbA, NE, RK. All authors provided feedback and approved the final draft.

Funding This review comprises part of the research requirements of a PhD to be completed by AMK, funded by the MRC-Arthritis Research UK Centre for Musculoskeletal Ageing Research.

Competing interests None declared.

Provenance and peer review Not commissioned; externally peer reviewed.

Data sharing statement Qualitative synthesis level electronic data (NVivo V.11) are available upon request from the corresponding author.

Open Access This is an Open Access article distributed in accordance with the terms of the Creative Commons Attribution (CC BY 4.0) license, which permits others to distribute, remix, adapt and build upon this work, for commercial use, provided the original work is properly cited. See: <http://creativecommons.org/licenses/by/4.0/>

© Article author(s) (or their employer(s) unless otherwise stated in the text of the article) 2017. All rights reserved. No commercial use is permitted unless otherwise expressly granted.

REFERENCES

- NICE. Osteoarthritis care and management in adults. *NICE clinical guideline* 2014;177.
- McAlindon TE, Bannuru RR, Sullivan MC, *et al.* OARSI guidelines for the non-surgical management of knee osteoarthritis. *Osteoarthritis Cartilage* 2014;22:363–88.
- Caspersen CJ, Powell KE, Christenson GM. Physical activity, exercise, and physical fitness: definitions and distinctions for health-related research. *Public Health Rep* 1985;100:126–31.
- Fransen M, McConnell S, Harmer AR, *et al.* Exercise for osteoarthritis of the knee: a Cochrane systematic review. *Br J Sports Med* 2015;49:1554–7.
- Fransen M, McConnell S, Hernandez-Molina G, *et al.* Exercise for osteoarthritis of the hip. *Cochrane Database Syst Rev* 2014;2014.
- Anwer S, Alghadir A, Brismée JM. Effect of home exercise program in patients with knee osteoarthritis: a systematic review and meta-analysis. *J Geriatr Phys Ther* 2016;39:38–48.
- Juhl C, Christensen R, Roos EM, *et al.* Impact of exercise type and dose on pain and disability in knee osteoarthritis: a systematic review and meta-regression analysis of randomized controlled trials. *Arthritis Rheumatol* 2014;66:622–36.
- Boesen MI, Boesen A, Koenig MJ, *et al.* Ultrasonographic investigation of the Achilles tendon in elite badminton players using color Doppler. *Am J Sports Med* 2006;34:2013–21.
- Uthman OA, van der Windt DA, Jordan JL, *et al.* Exercise for lower limb osteoarthritis: systematic review incorporating trial sequential analysis and network meta-analysis. [Reprint of BMJ. 2013;347:f5555; PMID: 24055922]. *Br J Sports Med* 2014;48:1579.
- Pisters MF, Veenhof C, van Meeteren NL, *et al.* Long-term effectiveness of exercise therapy in patients with osteoarthritis of the hip or knee: a systematic review. *Arthritis Rheum* 2007;57:1245–53.
- Pisters MF, Veenhof C, de Bakker DH, *et al.* Behavioural graded activity results in better exercise adherence and more physical activity than usual care in people with osteoarthritis: a cluster-randomised trial. *J Physiother* 2010;56:41–7.
- Batsis JA, Germain CM, Vásquez E, *et al.* Physical activity predicts higher physical function in older adults: the osteoarthritis initiative. *J Phys Act Health* 2016;13:6–16.
- Chmelo E, Nicklas B, Davis C, *et al.* Physical activity and physical function in older adults with knee osteoarthritis. *J Phys Act Health* 2013;10:777–83.
- Lin W, Alizai H, Joseph GB, *et al.* Physical activity in relation to knee cartilage T2 progression measured with 3 T MRI over a period of 4 years: data from the Osteoarthritis Initiative. *Osteoarthritis Cartilage* 2013;21:1558–66.
- Loprinzi PD, Sheffield J, Tyo BM, *et al.* Accelerometer-determined physical activity, mobility disability, and health. *Disabil Health J* 2014;7:419–25.
- Austin S, Qu H, Shewchuk RM. Association between adherence to physical activity guidelines and health-related quality of life among individuals with physician-diagnosed arthritis. *Qual Life Res* 2012;21:1347–57.
- Austin J, Williams WR, Hutchison S. Multidisciplinary management of elderly patients with chronic heart failure: five year outcome measures in death and survivor groups. *Eur J Cardiovasc Nurs* 2009;8:34–9.
- Herbolsheimer F, Schaap LA, Edwards MH, *et al.* Physical activity patterns among older adults with and without knee osteoarthritis in six European countries. *Arthritis Care Res* 2016;68:228–36.
- Marks R. Knee osteoarthritis and exercise adherence: a review. *Curr Aging Sci* 2012;5:72–83.
- Marks R, Allegrante JP. Chronic osteoarthritis and adherence to exercise: a review of the literature. *J Aging Phys Act* 2005;13:434–60.
- Stubbs B, Hurlley M, Smith T. What are the factors that influence physical activity participation in adults with knee and hip osteoarthritis? A systematic review of physical activity correlates. *Clin Rehabil* 2015;29:80–94.
- Veenhof C, Huisman PA, Barten JA, *et al.* Factors associated with physical activity in patients with osteoarthritis of the hip or knee: a systematic review. *Osteoarthritis Cartilage* 2012;20:6–12.
- Dobson F, Bennell KL, French SD, *et al.* Barriers and facilitators to exercise participation in people with hip and/or knee osteoarthritis: synthesis of the literature using behavior change theory. *Am J Phys Med Rehabil* 2016;95:372–89.
- Hawker GA, Stewart L, French MR, *et al.* Understanding the pain experience in hip and knee osteoarthritis—an OARSI/OMERACT initiative. *Osteoarthritis Cartilage* 2008;16:415–22.
- Sánchez-Herán Á, Agudo-Carmona D, Ferrer-Peña R, *et al.* Postural Stability in Osteoarthritis of the Knee and Hip: Analysis of Association With Pain Catastrophizing and Fear-Avoidance Beliefs. *Pm R* 2016;8:618–28.
- Holla JF, van der Leeden M, Knol DL, *et al.* Predictors and outcome of pain-related avoidance of activities in persons with early symptomatic knee osteoarthritis: a five-year followup study. *Arthritis Care Res* 2015;67:48–57.
- Holla JF, Sanchez-Ramirez DC, van der Leeden M, *et al.* The avoidance model in knee and hip osteoarthritis: a systematic review of the evidence. *J Behav Med* 2014;37:1226–41.



28. Somers TJ, Keefe FJ, Godiwala N, *et al.* Psychosocial factors and the pain experience of osteoarthritis patients: new findings and their directions. *Curr Opin Rheumatol* 2009;21:501–6.
29. Wideman TH, Finan PH, Edwards RR, *et al.* Increased sensitivity to physical activity among individuals with knee osteoarthritis: relation to pain outcomes, psychological factors, and responses to quantitative sensory testing. *Pain* 2014;155:703–11.
30. Arksey H, O'Malley L. Scoping studies: towards a methodological framework. *Int J Soc Res Methodol* 2005;8:19–32.
31. Kanavaki AM, Rushton A, Klocke R, *et al.* Barriers and facilitators to physical activity in people with hip or knee osteoarthritis: protocol for a systematic review of qualitative evidence. *BMJ Open* 2016;6:e012049.
32. Altman RD. Criteria for classification of clinical osteoarthritis. *J Rheumatol Suppl* 1991;27:10–12.
33. H K. *et al.* Critical appraisal of qualitative research. In: Noyes JBA, Hannes K, Harden A, ; eds. *Supplementary Guidance for Inclusion of Qualitative Research in Cochrane Systematic Reviews of Interventions Version 1 (updated August 2011): Cochrane Collaboration Qualitative Methods Group*, 2011.
34. Critical Appraisal Skills Programme (CASP). *CASP Checklists*. Oxford: CASP, 2014 <http://www.casp-uk.net/> - /!checklists/cb36
35. Creswell JW. *Qualitative Inquiry and Research Design*. Thousand Oaks, California: SAGE Publications Inc, 2007.
36. Barnett-Page E, Thomas J. Methods for the synthesis of qualitative research: a critical review. *BMC Med Res Methodol* 2009;9:59.
37. Engel GL. The clinical application of the biopsychosocial model. *Am J Psychiatry* 1980;137:535–44.
38. Campbell R, Evans M, Tucker M, *et al.* Why don't patients do their exercises? Understanding non-compliance with physiotherapy in patients with osteoarthritis of the knee. *J Epidemiol Community Health* 2001;55:132–8.
39. Fiske AL, Waters DL, Hing WA, *et al.* Perceptions towards aqua-based exercise among older adults with osteoarthritis who have discontinued participation in this exercise mode. *Australas J Ageing* 2016;35.
40. Hammer NM, Bieler T, Beyer N, *et al.* The impact of self-efficacy on physical activity maintenance in patients with hip osteoarthritis – a mixed methods study. *Disability and Rehabilitation* 2015;1–14.
41. Hendry M, Williams NH, Markland D, *et al.* Why should we exercise when our knees hurt? A qualitative study of primary care patients with osteoarthritis of the knee. *Fam Pract* 2006;23:558–67.
42. Kabel A, Dannecker EA, Shaffer VA, *et al.* Osteoarthritis and social embarrassment: Risk, Pain, And avoidance. *SAGE Open* 2014;4.
43. Kaptein SA, Backman CL, Badley EM, *et al.* Choosing where to put your energy: a qualitative analysis of the role of physical activity in the lives of working adults with arthritis. *Arthritis Care Res* 2013;65:1070–6.
44. Petursdottir U, Arnadottir SA, Halldorsdottir S. Facilitators and barriers to exercising among people with osteoarthritis: a phenomenological study. *Phys Ther* 2010;90:1014–25.
45. Stone RC, Baker J. Painful choices: a qualitative exploration of facilitators and barriers to active lifestyles among adults with osteoarthritis. *J Appl Gerontol* 2015.
46. Thorstensson CA, Roos EM, Petersson IF, *et al.* How do middle-aged patients conceive exercise as a form of treatment for knee osteoarthritis? *Disabil Rehabil* 2006;28:51–9.
47. Veenhof C, van Hasselt TJ, Koke AJ, *et al.* Active involvement and long-term goals influence long-term adherence to behavioural graded activity in patients with osteoarthritis: a qualitative study. *Aust J Physiother* 2006;52:273–8.
48. Biddle SJH, Mutrie N. *Psychology of physical activity. Determinants, well-being & interventions*. 2nd ed. New York: Routledge, 2008:33–160.
49. Kwasnicka D, Dombrowski SU, White M, *et al.* Theoretical explanations for maintenance of behaviour change: a systematic review of behaviour theories. *Health Psychol Rev* 2016;10:277–96.
50. Franco MR, Tong A, Howard K, *et al.* Older people's perspectives on participation in physical activity: a systematic review and thematic synthesis of qualitative literature. *Br J Sports Med* 2015;49:1268–76.
51. Morgan F, Battersby A, Weightman AL, *et al.* Adherence to exercise referral schemes by participants – what do providers and commissioners need to know? A systematic review of barriers and facilitators. *BMC Public Health* 2016;16:227.
52. Rhodes RE, Quinlan A. Predictors of physical activity change among adults using observational designs. *Sports Med* 2015;45:423–41.
53. Gignac MA, Davis AM, Hawker G, *et al.* "What do you expect? You're just getting older": a comparison of perceived osteoarthritis-related and aging-related health experiences in middle- and older-age adults. *Arthritis Rheum* 2006;55:905–12.
54. Liu SH, Driban JB, Eaton CB, *et al.* Objectively measured physical activity and symptoms change in knee osteoarthritis. *Am J Med* 2016;129:497–505.
55. Horne M, Tierney S. What are the barriers and facilitators to exercise and physical activity uptake and adherence among South Asian older adults: a systematic review of qualitative studies. *Prev Med* 2012;55:276–84.
56. Wilcox S, Der Ananian C, Abbott J, *et al.* Perceived exercise barriers, enablers, and benefits among exercising and nonexercising adults with arthritis: results from a qualitative study. *Arthritis Rheum* 2006;55:616–27.
57. Peeters GM, Brown WJ, Burton NW. Psychosocial factors associated with increased physical activity in insufficiently active adults with arthritis. *J Sci Med Sport* 2015;18:558–64.
58. Main CJ, Williams AC. Musculoskeletal pain. *BMJ* 2002;325:534–7.
59. Ross MM, Carswell A, Hing M, *et al.* Seniors' decision making about pain management. *J Adv Nurs* 2001;35:442–51.
60. Larmer PJ, Reay ND, Aubert ER, *et al.* Systematic review of guidelines for the physical management of osteoarthritis. *Arch Phys Med Rehabil* 2014;95:375–89.
61. He Y, Zhang M, Lin EH, *et al.* Mental disorders among persons with arthritis: results from the World Mental Health Surveys. *Psychol Med* 2008;38:1639–50.
62. Dekker J, Boot B, van der Woude LH, *et al.* Pain and disability in osteoarthritis: a review of biobehavioral mechanisms. *J Behav Med* 1992;15:189–214.
63. Sharma L, Cahue S, Song J, *et al.* Physical functioning over three years in knee osteoarthritis: role of psychosocial, local mechanical, and neuromuscular factors. *Arthritis Rheum* 2003;48:3359–70.
64. Edwards RR, Dworkin RH, Sullivan MD, *et al.* The role of psychosocial processes in the development and maintenance of chronic pain. *J Pain* 2016;17(9 Suppl):T70–T92.
65. de Rooij M, van der Leeden M, Avezaat E, *et al.* Development of comorbidity-adapted exercise protocols for patients with knee osteoarthritis. *Clin Interv Aging* 2014;9:829–42.
66. Volders S, Boddez Y, De Peuter S, *et al.* Avoidance behavior in chronic pain research: a cold case revisited. *Behav Res Ther* 2015;64:31–7.
67. Deci EL, Ryan RM. Self-determination theory: A macrotheory of human motivation, development, and health. *Canadian Psychology/ Psychologie canadienne* 2008;49:182–5.
68. Bandura A. Self-efficacy: toward a unifying theory of behavioral change. *Psychol Rev* 1977;84:191–215.
69. Jensen MP, Turner JA, Romano JM, *et al.* Coping with chronic pain: a critical review of the literature. *Pain* 1991;47:249–83.
70. Michie S. Designing and implementing behaviour change interventions to improve population health. *J Health Serv Res Policy* 2008;13(Suppl 3):64–9.
71. Horne M, Skelton D, Speed S, *et al.* The influence of primary health care professionals in encouraging exercise and physical activity uptake among White and South Asian older adults: experiences of young older adults. *Patient Educ Couns* 2010;78:97–103.
72. Lorig KR, Mazonson PD, Holman HR. Evidence suggesting that health education for self-management in patients with chronic arthritis has sustained health benefits while reducing health care costs. *Arthritis Rheum* 1993;36:439–46.
73. Koenen MA, Verheijden MW, Chinapaw MJ, *et al.* Determinants of physical activity and exercise in healthy older adults: a systematic review. *Int J Behav Nutr Phys Act* 2011;8:142.
74. Katzmarzyk PT. Physical activity, sedentary behavior, and health: paradigm paralysis or paradigm shift? *Diabetes* 2010;59:2717–25.
75. Prochaska JO, DiClemente CC. Stages and processes of self-change of smoking: toward an integrative model of change. *J Consult Clin Psychol* 1983;51:390–5.
76. Kinnafick FE, Thøgersen-Ntoumani C, Duda JL. Physical activity adoption to adherence, lapse, and dropout: a self-determination theory perspective. *Qual Health Res* 2014;24:706–18.
77. C Eb G, Levyckij C, Chabaud A, *et al.* Facilitators and Barriers in physical activity engagement for knee osteoarthritis patients. 30th Annual Congress of the French Society of Physical and Rehabilitation Medicine. *Ann Phys Rehabil Med* 2015.
78. Jinks C, Moore A, Holden MA, *et al.* Uptake and maintenance of physiotherapy-led exercise and general physical activity in older adults with knee pain: The beep longitudinal qualitative study. *Rheumatology* 2015;54:36.
79. Munn Z, Porritt K, Lockwood C, *et al.* Establishing confidence in the output of qualitative research synthesis: the ConQual approach. *BMC Med Res Methodol* 2014;14:1–7.

BMJ Open

Barriers and facilitators of physical activity in knee and hip osteoarthritis: a systematic review of qualitative evidence

Archontissa M Kanavaki, Alison Rushton, Nikolaos Efstathiou, Asma Alrushud, Rainer Klocke, Abhishek Abhishek and Joan L Duda

BMJ Open 2017; 7:

doi: [10.1136/bmjopen-2017-017042](https://doi.org/10.1136/bmjopen-2017-017042)

Updated information and services can be found at:
<http://bmjopen.bmj.com/content/7/12/e017042>

These include:

References

This article cites 68 articles, 7 of which you can access for free at:
<http://bmjopen.bmj.com/content/7/12/e017042#ref-list-1>

Open Access

This is an Open Access article distributed in accordance with the terms of the Creative Commons Attribution (CC BY 4.0) license, which permits others to distribute, remix, adapt and build upon this work, for commercial use, provided the original work is properly cited. See:
<http://creativecommons.org/licenses/by/4.0/>

Email alerting service

Receive free email alerts when new articles cite this article. Sign up in the box at the top right corner of the online article.

Topic Collections

Articles on similar topics can be found in the following collections

[Sports and exercise medicine](#) (227)

Notes

To request permissions go to:

<http://group.bmj.com/group/rights-licensing/permissions>

To order reprints go to:

<http://journals.bmj.com/cgi/reprintform>

To subscribe to BMJ go to:

<http://group.bmj.com/subscribe/>