

Blood pressure self-monitoring in pregnancy:

Tucker, Katherine L.; Taylor, Kathryn S.; Crawford, Carole ; Hodgkinson, James; Bankhead, Clare ; Carver, Tricia ; Ewers, Elizabeth ; Glogowska, Margaret; Greenfield, Sheila; Ingram, Lucy ; Hinton, Lisa ; Khan, Khalid S.; Locock, Louise ; Mackillop, Lucy; McCourt, Christine; Pirie, Alexander; Stevens, Richard; McManus, Richard J

DOI:

[10.1186/s12884-017-1605-0](https://doi.org/10.1186/s12884-017-1605-0)

License:

Creative Commons: Attribution (CC BY)

Document Version

Publisher's PDF, also known as Version of record

Citation for published version (Harvard):

Tucker, KL, Taylor, KS, Crawford, C, Hodgkinson, J, Bankhead, C, Carver, T, Ewers, E, Glogowska, M, Greenfield, S, Ingram, L, Hinton, L, Khan, KS, Locock, L, Mackillop, L, McCourt, C, Pirie, A, Stevens, R & McManus, RJ 2017, 'Blood pressure self-monitoring in pregnancy: examining feasibility in a prospective cohort study', *BMC pregnancy and childbirth*, vol. 17, no. 442. <https://doi.org/10.1186/s12884-017-1605-0>

[Link to publication on Research at Birmingham portal](#)

General rights

Unless a licence is specified above, all rights (including copyright and moral rights) in this document are retained by the authors and/or the copyright holders. The express permission of the copyright holder must be obtained for any use of this material other than for purposes permitted by law.

- Users may freely distribute the URL that is used to identify this publication.
- Users may download and/or print one copy of the publication from the University of Birmingham research portal for the purpose of private study or non-commercial research.
- User may use extracts from the document in line with the concept of 'fair dealing' under the Copyright, Designs and Patents Act 1988 (?)
- Users may not further distribute the material nor use it for the purposes of commercial gain.

Where a licence is displayed above, please note the terms and conditions of the licence govern your use of this document.

When citing, please reference the published version.

Take down policy

While the University of Birmingham exercises care and attention in making items available there are rare occasions when an item has been uploaded in error or has been deemed to be commercially or otherwise sensitive.

If you believe that this is the case for this document, please contact UBIRA@lists.bham.ac.uk providing details and we will remove access to the work immediately and investigate.

RESEARCH ARTICLE

Open Access



Blood pressure self-monitoring in pregnancy: examining feasibility in a prospective cohort study

Katherine L. Tucker¹, Kathryn S. Taylor¹, Carole Crawford¹, James A. Hodgkinson², Clare Bankhead¹, Tricia Carver¹, Elizabeth Ewers³, Margaret Glogowska¹, Sheila M. Greenfield², Lucy Ingram³, Lisa Hinton¹, Khalid S. Khan⁴, Louise Locock⁵, Lucy Mackillop⁶, Christine McCourt⁷, Alexander M. Pirie³, Richard Stevens¹ and Richard J. McManus^{1*}

Abstract

Background: Raised blood pressure (BP) affects approximately 10% of pregnancies worldwide, and a high proportion of affected women develop pre-eclampsia. This study aimed to evaluate the feasibility of self-monitoring of BP in pregnancy in women at higher risk of pre-eclampsia.

Methods: This prospective cohort study of self-monitoring BP in pregnancy was carried out in two hospital trusts in Birmingham and Oxford and thirteen primary care practices in Oxfordshire. Eligible women were those defined by the UK National Institute for Health and Care Excellence (NICE) guidelines as at higher risk of pre-eclampsia. A total of 201 participants were recruited between 12 and 16 weeks of pregnancy and were asked to take two BP readings twice daily three times a week through their pregnancy. Primary outcomes were recruitment, retention and persistence of self-monitoring. Study recruitment and retention were analysed with descriptive statistics. Survival analysis was used to evaluate the persistence of self-monitoring and the performance of self-monitoring in the early detection of gestational hypertension, compared to clinic BP monitoring. Secondary outcomes were the mean clinic and self-monitored BP readings and the performance of self-monitoring in the detection of gestational hypertension and pre-eclampsia compared to clinic BP.

Results: Of 201 women recruited, 161 (80%) remained in the study at 36 weeks or to the end of their pregnancy, 162 (81%) provided any home readings suitable for analysis, 148 (74%) continued to self-monitor at 20 weeks and 107 (66%) at 36 weeks. Self-monitored readings were similar in value to contemporaneous matched clinic readings for both systolic and diastolic BP. Of the 23 who developed gestational hypertension or pre-eclampsia and self-monitored, 9 (39%) had a raised home BP prior to a raised clinic BP.

Conclusions: Self-monitoring of BP in pregnancy is feasible and has potential to be useful in the early detection of gestational hypertensive disorders but maintaining self-monitoring throughout pregnancy requires support and probably enhanced training.

Keywords: Hypertension, Self-monitoring, Pregnancy, Pre-eclampsia

* Correspondence: richard.mcmanus@phc.ox.ac.uk

¹Nuffield Department of Primary Care Health Sciences, University of Oxford, Oxford OX2 6GG, UK

Full list of author information is available at the end of the article

Background

Hypertension in pregnancy, (defined as blood pressure (BP) $\geq 140/90$ mmHg), and pre-eclampsia (where there is proteinuria ≥ 300 mg/24 h additionally after 20 weeks, gestation) results in substantial maternal morbidity and mortality worldwide [1, 2]. Furthermore, hypertension during pregnancy has been linked to the development of chronic hypertension and an increase in lifetime cardiovascular risk [3]. Raised BP in pregnancy also carries a risk for the baby: pre-eclampsia is associated with fetal growth restriction, low birth weight, preterm delivery, respiratory distress syndrome, and admission to neonatal intensive care [4–6].

Pre-eclampsia causes widespread vascular endothelial dysfunction in the mother that can cause significant increases in BP [7, 8]. Raised BP in the absence of proteinuria is a risk factor for pre-eclampsia. Most cases of pre-eclampsia are asymptomatic in the early stages. Early hypertensive treatment and timely delivery can prevent morbidity and potentially mortality, hence improving detection is important [9].

Inadequate management of raised blood pressure, in particular systolic hypertension, was a key finding requiring action in the 2005–2008 UK Confidential Enquiry into Maternal Deaths [10]. While the maternal death rate from pre-eclampsia and eclampsia has since fallen in the UK, it remains a leading cause of preventable maternal death [9]. The current UK National Institute for Health and Care Excellence (NICE) guideline recommends BP monitoring at routine antenatal visits with increased frequency for those at higher risk of pre-eclampsia, but without defining the testing interval [11]. A large number of women develop pre-eclampsia between antenatal visits, [12] with potentially serious consequences [13]. BP self-monitoring could improve detection of hypertensive disorders [14–16]. However, there is no consensus regarding monitoring protocols or home diagnostic thresholds.

The Blood Pressure Self-Monitoring in Pregnancy (BuMP) study was a prospective cohort study which aimed to evaluate the feasibility and acceptability of a patient controlled intervention to detect hypertension in pregnancy through self-monitoring, in higher risk women. A qualitative study of women's experiences of self-monitoring will be reported separately.

Methods

A protocol was developed and registered for a feasibility study of self-monitoring of BP in pregnancy utilising experience from previous trials of self-monitoring in hypertension [17–19]. (National Institute for Health Research (NIHR) Central Research Network (CRN) Portfolio number: 14,151).

Study participants

Eligible pregnant women were those able and willing to self-monitor BP and defined by the NICE as at higher risk of pre-eclampsia on the basis of any of the following risk factors; aged 40 years or older; nulliparity (first pregnancy); pregnancy interval of more than 10 years; family history of pre-eclampsia; previous history of pre-eclampsia; history of hypertension in pregnancy, body mass index of 30 kg/m^2 or above at booking; pre-existing vascular disease such as hypertension; pre-existing renal disease; or multiple pregnancy [11]. Potentially eligible women were identified and provided with information about the study at routine antenatal appointments. Recruitment took place in two hospital trusts (in Oxford and Birmingham) and 13 primary care practices across Oxfordshire by midwives, general practitioners and medical staff.

Potential participants attended a study appointment between 12 and 16 weeks of pregnancy, in addition to their usual antenatal appointment, at which informed consent was gained, baseline history and measurements taken, a questionnaire completed regarding lifestyle and demographics and training regarding self-monitoring was delivered. Follow-up occurred at the time of routine antenatal appointments at 16, 28 and 36 weeks of pregnancy. Women requiring admission to hospital or additional clinic BP monitoring were asked to continue to self-monitor if they felt able. A participant flowchart is given in Additional file 1: Figure S1.

Blood pressure self-monitoring

Participants self-monitored BP using an automated electronic sphygmomanometer validated for use in pregnancy and pre-eclampsia (Microlife WatchBP home) and were asked to self-monitor taking two measurements both morning and evening, following 5 min at rest, three days a week (Monday, Wednesday and Friday) [15, 20]. Participants were provided with a simple colour coded guideline including recommendations to contact relevant health professionals in the case of high or low BP readings (Additional file 2: Figure S2). Little is known about self-monitored BP thresholds in pregnancy. Whilst self-monitoring to monitor essential hypertension typically uses lower thresholds at home compared to clinic, data from population studies suggests that out-of-office measurement is much closer to clinic BP levels in the absence of selection on the basis of raised clinic BP (typical in hypertensive populations) [21, 22]. Furthermore, setting lower home thresholds in this observational study might have led to inappropriate contact with maternity services and anxiety. Therefore, in the guideline given to the women, BP thresholds were set at the same level as clinic thresholds.

Self-monitored BP readings were automatically recorded by the monitors, additionally participating women were

asked to note readings in a diary and could optionally text their results via 'Florence,' an NHS telemonitoring service (<http://www.getflorence.co.uk/>) which provided feedback if any action was required. Health care professionals were not blinded to the self-monitored readings.

For analysis, the BP readings downloaded from the monitor were used in preference to diary readings. Minimum criteria for mean self-monitored BP were defined using standard criteria as: at least 12 readings over at least 4 days, plausible levels (systolic BP 70–250 mmHg and diastolic BP 40–150 mmHg), and without an implausible drop between readings (>50% decrease in successive readings) (Additional file 3: Figure S3) [23]. Clinic readings taken as part of usual care were recorded directly from the maternity notes.

Outcome measures

The primary outcomes were numbers recruited and retained, and persistence of self-monitoring. Retention was defined as the proportion of women recruited who remained in the study until miscarriage or delivery or final follow-up at 36 weeks, whichever was longer. Persistence was defined as the proportion of women who self-monitored until miscarriage or delivery or final follow-up at 36 weeks, whichever was longer.

Secondary outcomes, included the difference between mean self-monitored and clinic BP (systolic and diastolic); and the performance of self-monitored BP in the detection of gestational hypertension compared to the reference of clinic BP.

Final diagnostic verdicts were provided by an obstetric medicine consultant (LM) or an obstetrician (AP), who reviewed the antenatal notes from usual care. These diagnoses were independently reviewed by RM and where more than one diagnosis was recorded, the final diagnosis for that pregnancy was taken (for example gestational hypertension that developed subsequently into pre-eclampsia was defined as the latter). Birthweight centiles of the babies born in the study were calculated using the customised weight centiles GROW (Gestation Related Optimal Weight) [24].

Sample size calculation

Feasibility studies do not require a formal sample size calculation but a sample of 200 women was considered sufficient to both allow experience with self-monitoring and to include women who developed pregnancy induced hypertension subsequently [25].

Statistical analysis

Persistence

A Kaplan-Meier (KM) survival curve was plotted to describe the persistence of self-monitoring, based on the dates of participants' final home readings. The plot was constructed on participants from 20 weeks gestation

onwards to allow for the fact that women started monitoring at different times between 10 and 18 weeks. Women were censored at delivery or dropout.

Mean differences

Self-monitored and clinic BP readings were plotted between weeks 12 and 38 weeks for participants who had both self-monitored and clinic BP data in the same week of pregnancy. Data on clinic BP readings were extracted from the participants' standard antenatal records. Home BP readings were averaged across the same week as a particular clinic reading.

Time to first raised reading

Further KM survival curves were produced from 12 to 40 weeks to present the time to the first raised BP, separately for home and clinic BP readings in women who had both types of readings. Rather than using average BP for home and clinic, this analysis used raised BP readings on a single occasion. A raised clinic BP was defined as a reading recorded in the clinical record $\geq 140/90$ mmHg. The self-monitoring instructions advised women to measure their own BP at least twice per session and to act on the second reading. The first reading was therefore dropped from the base case analysis. Because home readings were repeated if raised, a raised home reading was defined as the final reading of any monitoring "session" $\geq 140/90$ mmHg. Session length was defined as 15 min for high readings (defined as $\geq 150/100$ mmHg) and 5 h for raised readings (140–149/90–99 mmHg), in order to capture data collected in accordance with the participants' instructions. [Additional file 2: Figure S2]. The survival curves were compared using a log-rank test.

Diagnostic accuracy statistics

Women were classed as having hypertension based on home readings if they had at least one episode of raised home BP (Additional file 4: Table S1). Another classification was based on clinic BP readings (Additional file 4: Table S1). These classifications were compared with the final clinical diagnosis of hypertension, the gold standard. Sensitivity, specificity, positive and negative predictive values were produced for both home and clinic BP monitoring.

Sensitivity analyses

For time to first raised reading, considered the alternative strategies of including the first home reading of each session, and using a lower threshold for raised home readings of 135/85 mmHg (retaining 140/90 mmHg for clinic).

All analyses were carried out using STATA 12SE (StataCorp, LP).

Ethical approval

A favourable ethical review for this study was obtained from South Central – Oxford Research Ethics Committee B (reference; 12 SC 0625, 12/12/2012).

Results

Participant recruitment

Two hundred one participants were recruited between April 2013 and January 2014, mostly through secondary care ($n = 162$, 81%) with a further 39 (19%) recruited via 13 general practice sites. Women were recruited at between 10 and 18 weeks of pregnancy and followed thereafter. At baseline, they had a mean age of 31.4 (SD 5.5), a BMI of 28.1 (SD 6.6), and a mean clinic BP of $117 \pm 10/71 \pm 9$ mmHg (Table 1). Few women had self-monitored BP previously (4.8%). Participants showed similar levels of anxiety to normative data from working adult women in the age range (STAI: 33.7 [BuMP] vs 35.0 [working adult women aged 24–35]) [26]. Half (50%) reported having professional qualifications or a degree (vs 43% of women aged 25–34 with a degree level qualification or above nationally) [27].

Babies born in the study had a mean GROW birthweight centile of 45.7 (SD 29.2, $n = 166$).

Retention in the study and persistence with self-monitoring

Of the 201 women who entered the study, 168 (84%) continued until final follow-up at 36 weeks (or delivery/miscarriage if earlier) of whom 161 (80%) were in the study at 36/40 gestation (Fig. 1). The average gestation at delivery was 38.2 weeks (SD 2.2).

One hundred sixty-two (81%) women provided any suitable self-monitored BP data for the analysis, a total of 16,940 home readings (Fig. S3) [23]. Of these 162 women, 139 (86%) continued to self-monitor up to 28 weeks or delivery/miscarriage, if sooner, and 107 (66%) continued to 36 weeks or delivery if sooner. Persistence with self-monitoring is shown in Fig. 2.

Self-monitored and clinic blood pressure readings

Self-monitored and clinic BP measurements from week 12 to week 38 of pregnancy are shown in Fig. 3. Most systolic and all diastolic point estimates for home and clinic readings were within 5 mmHg and the 95% confidence intervals overlapped for both systolic and diastolic BP other than systolic BP at 20 weeks. However, although this work was not powered to detect such differences, the point estimates for systolic clinic BP tended to be higher than home readings whereas diastolic were if anything reversed.

Detection of raised blood pressure in women with confirmed gestational hypertension and pre-eclampsia

Final diagnostic verdicts were completed on 157/201 women, including two women who withdrew with

Table 1 Baseline characteristics

	Number of participants	Mean(SD) or %
Demographics		
Age (years)	201	31 (6)
BMI ^d	198	28 (7)
Ethnicity		
White	157	78
Mixed	8	4
Asian or Asian British	18	9
Black or Black British	8	4
Chinese or other	6	3
Unknown/not disclosed	4	2
Eligibility ^a		
Age ≥ 40	18	9
BMI ≥ 30	61	31
Multiple pregnancy	35	17
First pregnancy	87	43
Diagnosed with high BP pre-pregnancy	18	9
High BP in previous pregnancy	42	21
Pre-eclampsia in previous pregnancy	24	12
Family history of pre-eclampsia	39	20
Pregnancy interval > 10 yrs	6	3
Renal disease	6	3
Clinic BP at baseline ^{b,d}		
Systolic	200	118 (10)
Diastolic	200	71 (9)
Education (highest)		
Professional qualifications or degree	101	50
School qualifications only	74	37
No formal qualifications	7	4
Unknown	19	9
Other baseline characteristics		
Converted STAI score ^c	179	34 (11)
Measured BP at home previously	9	25

^aParticipants required one or more eligibility criteria

^bClinic BP at baseline included readings up to 18 weeks pregnancy

^cSix-item version of the State-Trait Anxiety Inventory (STAI-6) was converted pro-rata to range 20–80.

^dThere was missing baseline information from one participant and 2 further participants did not wish to provide BMI data

permission for notes review (eight sets of notes could not be located or were incomplete and 36 participants withdrew without providing permission for notes review). Overall 28/157 (18%) women developed pregnancy induced hypertension. This can be broken down as follows: considering women developing new hypertension following 20 weeks of pregnancy, 20 (13%) developed gestational hypertension, of whom 5 (3%) went on to develop pre-

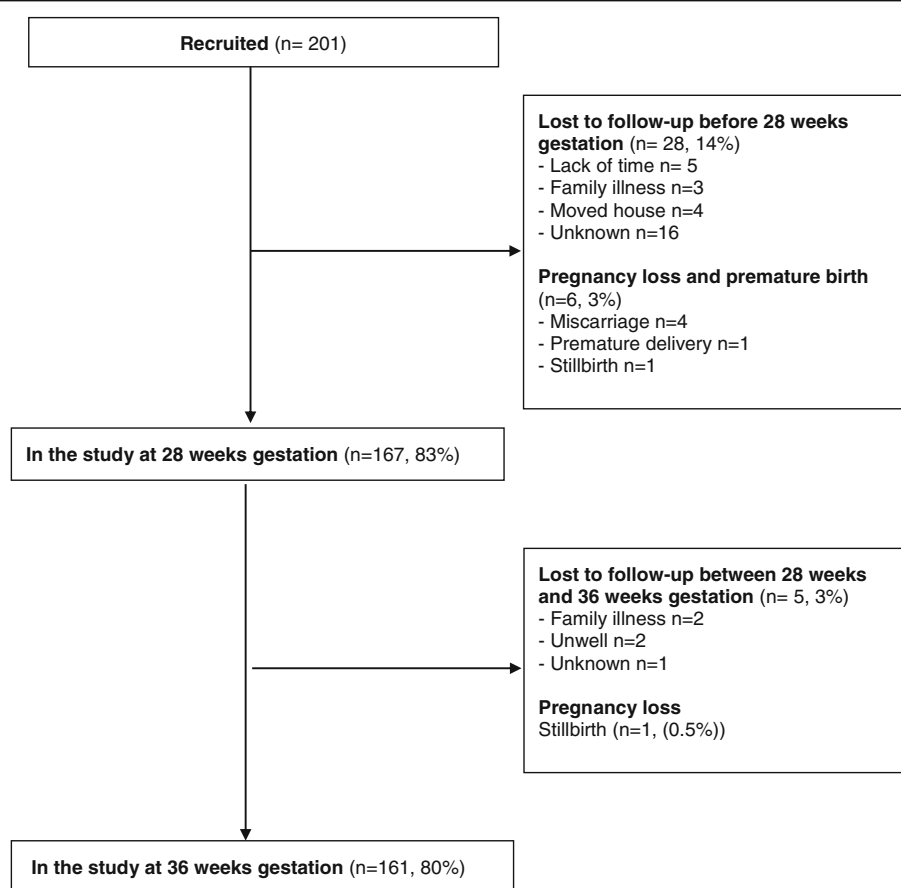


Fig. 1 Participant flow through the study. Note: Women attending clinic for follow up did not necessarily provide useable home BP data

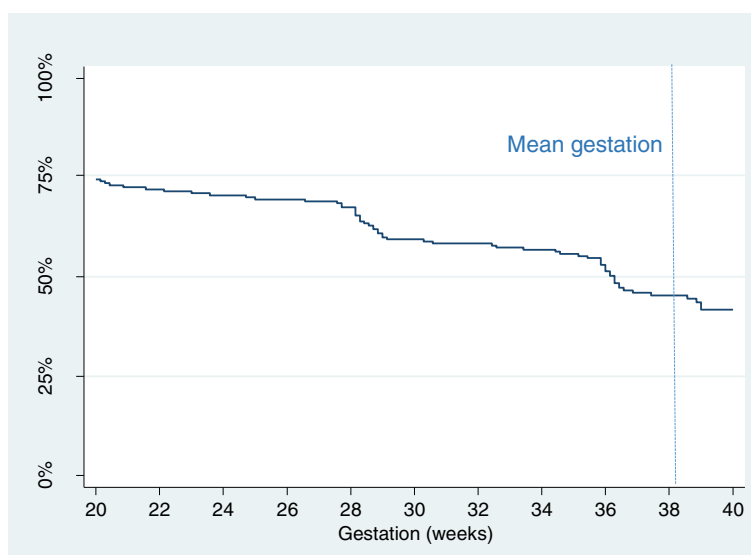
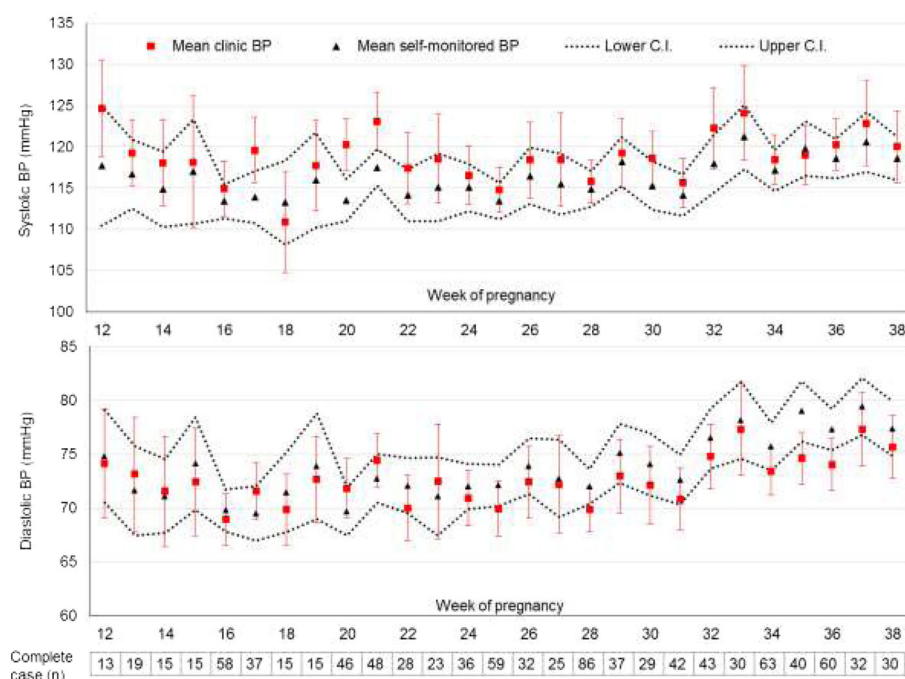


Fig. 2 Persistence of self-monitoring. Of 162 who self-monitored, 160 started before 20 weeks gestation and, of these, 12 stopped at or before 20 weeks. The graph presents the remaining 148 patients (74% of the 201 total population, and 91% of the 162 who self-monitored). Mean gestation at delivery is indicated by the dotted line (38.2 weeks)



Clinic and self-monitored BP readings were plotted for complete cases i.e. those with *both* a clinic BP at a particular time point and who had self-monitored in the same week. Data shown are mean with 95% CI. Clinic readings were not necessarily completed on the same monitor as the monitor provided to women. Dotted intervals are the confidence intervals for the self-monitored data.

Note very little data after 38 weeks

Fig. 3 Clinic and home blood pressure readings through pregnancy.

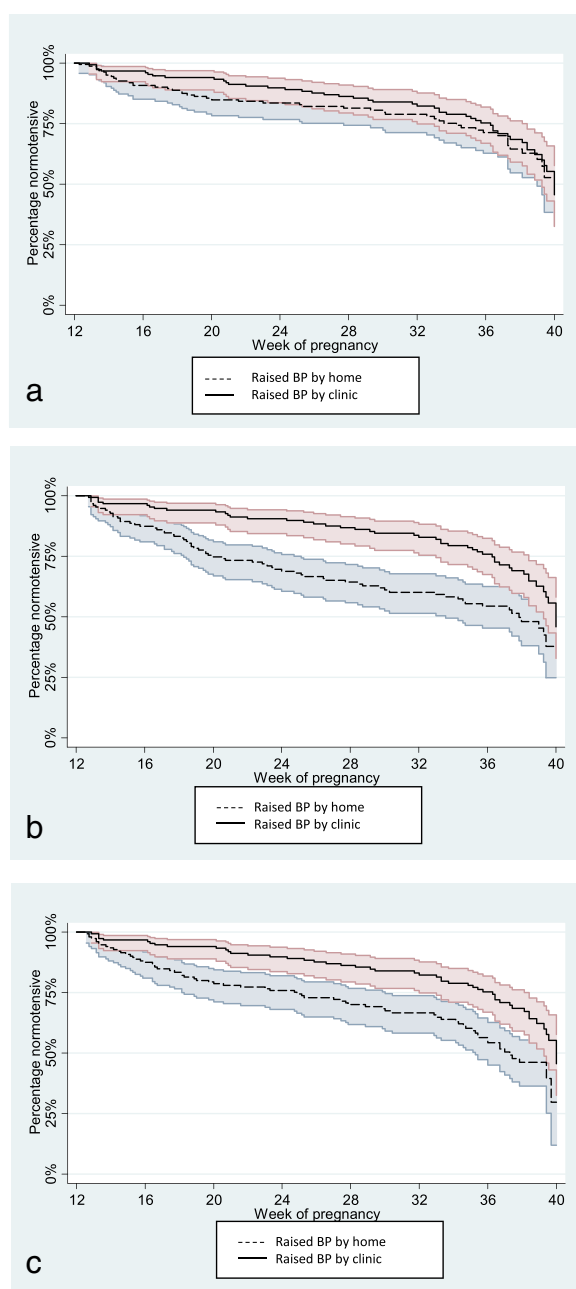
eclampsia. Of the further 13 (8%) women with chronic hypertension, 5 (3%) developed pre-eclampsia and 3 (2%) had worsening hypertension but not proteinuria.

Of the 28 (18%) women with a final diagnosis of pregnancy-induced hypertension, 5 (18%) had stopped self-monitoring by diagnosis. Using a common threshold for raised BP of 140/90 mmHg for both clinic and home BP, of the remaining 23 women, 9 (39%) had a raised home BP prior to raised clinic BP, 5 (22%) had a raised home BP on the same date or after the raised clinic reading, and 9 (39%) only had a raised clinic BP (Additional file 4: Table S1). Considering the 129 (82%) of those with diagnostic verdicts but no final diagnosis of gestational hypertension and/or pre-eclampsia, 25 (19%) had at least one episode of raised home BP and 33 (26%) had at least one episode of raised clinic BP. Of the 152 who did not have a raised clinic BP and/or a raised home BP prior to 12 weeks, the times to detection of first raised BP for clinic and home BPs were not significantly different (Fig. 4a, $p=0.9$).

In detecting hypertension, home monitoring achieved a sensitivity of 61%, specificity of 81%, a positive predictive value of 36% and a negative predictive value of 92%

(Additional file 4: Table S2). Additional appointments due to raised home blood pressure were apparently infrequent but this should be treated cautiously as there may have been under reporting.

In sensitivity analyses, two changes in the diagnostic criteria were assessed, including a) the first BP measured at home (Fig. 4b) and b) reducing the self-monitored threshold for raised BP to 135/85 mmHg (retaining 140/90 mmHg for clinic) (Fig. 4c and Additional file 4: Table S1). Both changes increased sensitivity but reduced specificity: both increased the number of women with hypertension initially detected at home from 9 (39%) to 14 (61%) and made the time to detection significantly shorter than detection based on clinic BP readings ($P<0.01$) (Additional file 1: Tables 2 and 3). However, the inclusion of the first BP measured at each session increased the number of normotensive women with at least one episode of raised home BP from 25 (19%) to 49 (38%). Changing the threshold for raised BP at home to 135/85 mmHg, increased the number of normotensive women with at least one episode of raised home BP from 25 (19%) to 45 (35%).



Time to the first raised blood pressure: The event is the first raised BP between 12 weeks and 40 weeks using data from women who provided both self-monitored and clinic BP readings. Based on those of the 162 women who self-monitored and did not have a raised clinic BP and/or a raised home BP at or before 12 weeks.

* The baseline analysis excluded the first reading in any monitoring session because the women were told to ignore the first reading and act on the second. This assumption was testing in sensitivity analysis (B).

Fig. 4 Time to the first raised blood pressure. **a** Time to first raised blood pressure excluding the first home reading taken in any monitoring session and using thresholds for hypertension of 140/90mmHg for home and clinic. $n=152^*$, 50 (33%) had a raised clinic BP reading, 43 (28%) has a raised home BP reading. **b** Sensitivity analysis 1: Time to first raised blood pressure including the first home reading taken in any monitoring session and using thresholds for hypertension of 140/90mmHg for home and clinic. $n=151$, 49 (32%) has a raised clinic BP reading, 69 (46%) has a raised home BP reading. **c** Sensitivity analysis 2: Time to first raised blood pressure excluding the first reading taken in any monitoring session and using thresholds for hypertension of 135/85mmHg for home and 140/90mmHg for clinic. $n=152^*$, 50 (33%) has a raised clinic BP reading, 69 (45%) had a raised home BP reading

Discussion

Main findings

This study has shown that a range of women with different risk factors for hypertension in pregnancy were willing to take part in a study of self-monitoring of BP. Recruitment took place from a variety of settings, including both primary and secondary care, with the largest numbers of women recruited from hospital sites. Most participants (85%) were successfully trained to self-monitor and, whilst retention in the study was adequate (80%), persistence with self-monitoring to 36 weeks was less so (66%).

In this observational study, clinic readings were used to determine a final diagnosis of hypertension. As expected clinic BP monitoring alone had a sensitivity of 100%, with home monitoring achieving a sensitivity of 61%, specificity was higher with home monitoring (81% vs 74% for clinic monitoring). Home monitoring had a similar positive and negative predictive value to clinic monitoring suggesting that home monitoring is an appropriate intervention to trial formally.

Is this the correct population to consider for self-monitoring?

This study recruited women at higher risk of pre-eclampsia of which, 18% developed pregnancy-induced hypertension and 6% pre-eclampsia, around double that expected in the overall pregnant population [28]. A population with more than a 1:6 chance of developing a hypertensive disorder of pregnancy would seem appropriate to formally test effectiveness and cost-effectiveness of a self-monitoring intervention. Earlier diagnosis could have a significant impact on pregnancy health care of women, improving the management of hypertension and therefore potentially reducing the number of adverse outcomes relating to gestational hypertension and pre-eclampsia.

Which are the correct thresholds to use?

Self-monitored readings were similar in value to contemporaneous matched clinic readings for both systolic and diastolic BP in terms of overlapping confidence intervals with point estimates largely within 5 mmHg. Outside of pregnancy, home readings are generally

considered to be lower than clinic pressures however this is largely due to selection for a white coat effect inherent in a diagnosis of hypertension on the basis of clinic readings [29]. This study used identical thresholds for action for home and clinic readings, resulting in 39% (albeit of only 23 individuals) detecting definitively raised BP at home prior to the clinic. The sensitivity analysis suggested that earlier diagnosis of hypertension was possible in over 60% with the use of lower home thresholds. This was at the expense of a significant number of false positives. Considering pharmacological intervention does not currently happen until a threshold of 150/100 mmHg in the clinic [28] a regime of increased monitoring at a threshold of 135/85 mmHg at home, with referral to clinic for those with persistently raised home BP of 140/90 mmHg may be an appropriate compromise. Understanding whether this is an appropriate intervention to justify home monitoring on a wide scale to detect pregnancy induced hypertension requires a properly powered trial.

Strengths and limitations

Considering the availability and uptake of self-monitoring equipment in adults with hypertension, there are remarkably few data concerning its use in pregnancy [30, 31]. This study recruited over 200 participants from diverse settings including inner-city and more rural sites, both teaching and district general hospitals, several GP practices and 20% from minority ethnic groups. The monitor provided to participants was one of the few validated for use in both pregnancy and pre-eclampsia hence the results from self-monitoring should be robust [20]. Almost 20% of women provided no or insufficient self-monitored readings and this may reflect a need for better training in order to maximise retention. 25% of those who were successfully trained to self-monitor did not persist with it, anecdotally for a range of reasons including lack of time, family illness or moving away. Education, training and methods of improving motivation for self-monitoring throughout pregnancy should be considered in future work.

Clinic BP was not systematically measured with identical equipment in each case and so the comparisons with home BP may be flawed. Such between centre differences are inevitable in a pragmatic observational study such as this and reflect the need for stratification by centre in future randomised work.

In this study self-monitoring did not always detect raised readings before clinic readings; this may represent white coat hypertension in these instances and warrants further study [32].

Comparison with other literature

Self-monitoring of BP will increase women's involvement with their antenatal care. Previous work has shown that pregnant women are happy to undertake the additional

monitoring [33] and find home monitoring more acceptable than more frequent clinic visits [34] or ambulatory monitoring [32, 35]. This was confirmed in our linked qualitative work which will be reported separately [36].

The only randomised trial of self-monitoring of BP in pregnancy to date showed that even a weekly schedule of self-monitoring increased the likelihood of BP monitoring in any given week and therefore increased the likelihood of detection of raised BP [37].

Previous studies that have assessed both clinic and home BP during pregnancy present conflicting results regarding differences in absolute levels, with some finding that home readings were lower on average than clinic readings while others reported the reverse [15, 16, 38–41]. None of these studies used a validated monitor, making comparisons difficult. The largest of these studies found a stable home-clinic difference throughout, similar to that seen here (within 5 mmHg) [40]. Further data regarding relative thresholds for self-monitoring are currently being analysed in an individual patient data meta-analysis [22].

Other work to improve the prediction or early detection of gestational hypertension and pre-eclampsia has focused on risk factors and circulating biomarkers. Biomarkers with promise include factors involved in endothelial and immune response, cardiovascular markers and metabolic factors [42, 43]. The large range of biomarkers under investigation reflects the fact that pre-eclampsia is a multifactorial and multisystem disease [44]. Detection of raised BP by self-monitoring could be complementary to these emerging screening strategies.

Conclusion

Taken together, these results suggest that women at risk of hypertension in pregnancy are able to self-monitor BP and that this strategy has the potential to detect gestational hypertension prior to clinic readings. However a larger trial, which will require superior training and retention approaches, is required to understand the true effectiveness and cost-effectiveness of self-monitoring of BP in the detection of hypertension in pregnancy.

Additional files

Additional file 1: Figure S1. Study Procedures. (DOCX 20 kb)

Additional file 2: Figure S2. Participant Interpretation Chart. (DOCX 13 kb)

Additional file 3: Figure S3. Exclusions of home data. (DOCX 21 kb)

Additional file 4: Supplementary Tables. Table S1. Table S2. Table S3. (DOCX 15 kb)

Abbreviations

BP: blood pressure; BuMP study: Blood Pressure Self-Monitoring in Pregnancy study; CRN: Central Research Network; NICE: National Institute for Health and Care Excellence; NIHR: National Institute for Health Research

Acknowledgements

We also wish to acknowledge the invaluable contribution of Paula Cole and Ursula Saunders, patient representatives, Mary Selwood a research midwife, Carl Heneghan, Professor of Evidence Based Medicine, and Carla Betts who provided administrative support to the study. This work would not have been possible without the help of the Clinical Research Networks at Birmingham Women's Hospital and in Oxford and Banbury, and most importantly relied on the women who participated.

Funding

This article represents independent research commissioned by the National Institute for Health Research (NIHR) School of Primary Care Research (SPCR) (SPCR project No. 171). The views expressed in this publication are those of the authors and not necessarily those of the NHS, the NIHR or the Department of Health. RM receives support from NIHR Professorship (NIHR-RP-02-12-015) and the NIHR Oxford Collaboration for Leadership in Applied Health Research and Care. SG is part funded by the National Institute for Health Research (NIHR) Collaboration for Leadership in Applied Health Research and Care West Midlands. During the period of the research LL was employed at the Nuffield Department of Primary Care Health Sciences and supported by the NIHR Oxford Biomedical Research Centre.

Availability of data and materials

The datasets generated and analysed during the current study are available via information.guardian@phc.ox.ac.uk on reasonable request.

Authors' contributions

RM conceived the study and in collaboration with SG, RS, KK, KLT, JH, LL gained the funding. The protocol was developed by KLT, RM, RS, LM with the advice and support of all authors. Data was recorded by CC, EE, LI, LM, AP and KLT. Statistical analysis was carried out by KST with RS. The first draft of the paper was written by KLT with RM and subsequently edited and approved by all co-authors. All authors have read, provided critical revision and approved the final version of the manuscript (KLT, KST, CC, JH, CB, TC, EE, MG, SG, LI, LH, KK, LL, LM, CM, AP, RS, RM). RM will act as guarantor.

Ethics approval and consent to participate

A favourable ethical review for this study was obtained from South Central – Oxford Research Ethics Committee B (reference; 12 SC 0625, 12/12/2012). Written informed consent was gained from individuals who agreed to take part.

Consent for publication

Not applicable, as this manuscript does not contain identifiable data from any individual person.

Competing interests

We have read and understood the BMC policy on declaration of interests and declare the following interests: RM has received BP monitoring equipment for research studies from Omron and Lloyds Pharmacy. The monitors used in this study were purchased commercially. No author other than those identified has anything to declare.

Publisher's Note

Springer Nature remains neutral with regard to jurisdictional claims in published maps and institutional affiliations.

Author details

¹Nuffield Department of Primary Care Health Sciences, University of Oxford, Oxford OX2 6GG, UK. ²Institute of Applied Health Research, University of Birmingham, Edgbaston, Birmingham B15 2TT, UK. ³Obstetrics & Maternal Medicine, Birmingham Women's Hospital, Edgbaston, Birmingham B15 2TG, UK. ⁴Barts and the London School of Medicine and Dentistry, Queen Mary University of London, London E1 2AD, UK. ⁵Health Services Research Unit, University of Aberdeen, Aberdeen, UK. ⁶Oxford University Hospitals NHS Trust, Women's Centre, John Radcliffe Hospital, Oxford OX3 9DU, UK. ⁷City University London, Northampton Square, London EC1V 0HB, UK.

Received: 10 February 2017 Accepted: 29 November 2017

Published online: 28 December 2017

References

- Khan KS, Wojdyla D, Say L, Gulmezoglu AM, Van Look PF. WHO analysis of causes of maternal death: a systematic review. *Lancet*. 2006;367(9516):1066–74.

- Why mothers die 2000–2002. National Institute for Clinical Excellence, Scottish Executive Health Department, Department of Health, Social Services and Public Safety, Northern Ireland The sixth report of the confidential enquiries into maternal deaths in the United Kingdom 2004, London: RCOG Press.
- National Collaborating Centre for Women's and Children's Health (UK): Hypertension in pregnancy: the management of hypertensive disorders during pregnancy. In. Published by the Royal College of Obstetricians and Gynaecologists; 2010.
- Altman D, Carroli G, Duley L, Farrell B, Moodley J, Neilson J, Smith D. Do women with pre-eclampsia, and their babies, benefit from magnesium sulphate? The magpie trial: a randomised placebo-controlled trial. *Lancet*. 2002;359(9321):1877–90.
- Slattery MM, Geary M, Morrison JJ. Obstetric antecedents for preterm delivery. *J Perinat Med*. 2008;36(4):306–9.
- Rasmussen S, Irgens LM. The effects of smoking and hypertensive disorders on fetal growth. *BMC pregnancy and childbirth*. 2006;6:16.
- Powe CE, Levine RJ, Karumanchi SA. Preeclampsia, a disease of the maternal endothelium: the role of antiangiogenic factors and implications for later cardiovascular disease. *Circulation*. 2011;123(24):2856–69.
- Gilbert JS, Ryan MJ, LaMarca BB, Sedeek M, Murphy SR, Granger JP. Pathophysiology of hypertension during preeclampsia: linking placental ischemia with endothelial dysfunction. *Am J Phys Heart Circ Phys*. 2008;294(2):H541–50.
- Knight M KS, Brocklehurst P, Neilson J, Shakespeare J, Kurinczuk JJ (Eds.) on behalf of MBRRACEUK: Saving Lives, Improving Mothers' Care Lessons learned to inform future maternity care from the UK and Ireland Confidential Enquiries into Maternal Deaths and Morbidity 2009–2012. Maternal, Newborn and Infant Clinical Outcome Review Programme. Oxford: National Perinatal Epidemiology; 2014.
- Cantwell R, Clutton-Brock T, Cooper G, Dawson A, Drife J, Garrod D, Harper A, Hulbert D, Lucas S, McClure J, et al. Saving Mothers' Lives: Reviewing maternal deaths to make motherhood safer: 2006–2008. The Eighth Report of the Confidential Enquiries into Maternal Deaths in the United Kingdom. *BJOG*. 2011;118(Suppl 1):1–203.
- NICE: NICE clinical guideline 62. Antenatal care. In.; 2008 (updated 2014).
- Douglas KA, Redman CW. Eclampsia in the United Kingdom. *BMJ*. 1994;309(6966):1395–400.
- Report on Confidential Enquiries into Maternal deaths in the United Kingdom 1991–1993. HMSO, London. 1996.
- Denolle T, Daniel JC, Calvez C, Ottaviani JN, Esnault V, Herpin D. Home blood pressure during normal pregnancy. *Am J Hypertens*. 2005;18(9 Pt 1):1178–80.
- Rey E, Pilon F, Boudreault J. Home blood pressure levels in pregnant women with chronic hypertension. *Hypertens Pregnancy*. 2007;26(4):403–14.
- Lo C, Taylor RS, Gamble G, McCowan L, North RA. Use of automated home blood pressure monitoring in pregnancy: is it safe? *Am J Obstet Gynecol*. 2002;187(5):1321–8.
- McManus RJ, Mant J, Bray EP, Holder R, Jones MI, Greenfield S, Kaambwa B, Banting M, Bryan S, Little P, et al. Telemonitoring and self-management in the control of hypertension (TASMINH2): a randomised controlled trial. *Lancet*. 2010;376(9736):163–72.
- McManus RJ, Mant J, Haque MS, Bray EP, Bryan S, Greenfield SM, Jones MI, Jowett S, Little P, Penalzoza C, et al. Effect of self-monitoring and medication self-titration on systolic blood pressure in hypertensive patients at high risk of cardiovascular disease: the TASMIN-SR randomized clinical trial. *JAMA*. 2014;312(8):799–808.
- McManus RJ, Mant J, Roalfe A, Oakes RA, Bryan S, Pattison HM, Hobbs FD. Targets and self monitoring in hypertension: randomised controlled trial and cost effectiveness analysis. *BMJ*. 2005;331(7515):493.
- Chung Y, de Greeff A, Shennan A. Validation and compliance of a home monitoring device in pregnancy: microlife WatchBP home. *Hypertens Pregnancy*. 2009;28(3):348–59.
- Staessen JA, Fagard R, Lijnen P, Thijs L, van Hulle S, Vyncke G, Amery A. Ambulatory blood pressure and blood pressure measured at home: progress report on a population study. *J Cardiovasc Pharmacol*. 1994; 23(Suppl 5):S5–11.
- Tucker KL, Bankhead C, Hodgkinson JA, Roberts N, Stevens R, Heneghan C, Rey E, Lo C, Chandiramani M, Taylor RS, et al. Could self-monitoring of blood pressure in pregnancy be used to improve detection of gestational hypertension? An individual patient data meta-analysis. 2017 In preparation.

23. Stergiou GS, Skeva II, Zourbaki AS, Mountokalakis TD. Self-monitoring of blood pressure at home: how many measurements are needed? *J Hypertens*. 1998;16(6):725–31.
24. Gardosi J, Chang A, Kalyan B, Sahota D, Symonds EM. Customised antenatal growth charts. *Lancet*. 1992;339(8788):283–7.
25. Teare MD, Dimairo M, Shephard N, Hayman A, Whitehead A, Walters SJ. Sample size requirements to estimate key design parameters from external pilot randomised controlled trials: a simulation study. *Trials*. 2014;15:264.
26. Spielberger CD, Gorsuch RL, Lushene R, Vagg PR, G.A. J: State-Trait Anxiety Inventory for Adults Form Y. In: Review Set 1690 Woodside road suit 202, Redwood city CA 94061 USA (650) 261-3500: Mind garden, Inc; 1983.
27. Office for National Statistics: Local Area Analysis of Qualifications Across England and Wales, Degree Level or Above Qualification by Age and Gender. ONS London. 2014.
28. NICE: Clinical Guideline 107 Hypertension in pregnancy: The management of hypertensive disorders during pregnancy. NICE, London 2010 (updated in 2011).
29. Stergiou GS, Zourbaki AS, Skeva II, Mountokalakis TD. White coat effect detected using self-monitoring of blood pressure at home: comparison with ambulatory blood pressure. *Am J Hypertens*. 1998;11(7):820–7.
30. Hodgkinson JA, Tucker KL, Crawford C, Greenfield SM, Heneghan C, Hinton L, Khan K, Locock L, Mackillop L, McCourt C, et al. Is self monitoring of blood pressure in pregnancy safe and effective? *BMJ*. 2014;349:g6616.
31. Baral-Grant S, Haque MS, Nouwen A, Greenfield SM, McManus RJ. Self-monitoring of blood pressure in hypertension: a UK primary care survey. *Int J Hypertens*. 2012;2012:582068.
32. Denolle T, Weber J-L, Calvez C, Getin Y, Daniel J-C, Lurton O, Cheve M-T, Marechaud M, Bessec P, Carbonne B, et al. Diagnosis of white coat hypertension in pregnant women with teletransmitted home blood pressure. *Hypertens Pregnancy*. 2008;27(3):305–13.
33. Magee LA, von Dadelszen P, Chan S, Gafni A, Gruslin A, Helewa M, Hewson S, Kavuma E, Lee SK, Logan AG, et al. Women's views of their experiences in the CHIPS (control of hypertension in pregnancy study) pilot trial. *Hypertens Pregnancy*. 2007;26(4):371–87.
34. Naef RW 3rd, Perry KG Jr, Magann EF, McLaughlin BN, Chauhan SP, Morrison JC. Home blood pressure monitoring for pregnant patients with hypertension. *J Perinatol*. 1998;18(3):226–9.
35. Cartwright W, Dalton KJ, Swindells H, Rushant S, Mooney P. Objective measurement of anxiety in hypertensive pregnant women managed in hospital and in the community. *Br J Obstet Gynaecol*. 1992;99(3):182–5.
36. Hinton LT, Greenfield K, Hodgkinson S, Mackillop J, McCourt L, Carver C, Crawford T, Glogowska C, Heneghan M, Khan C, Locock K, Selwood L, Taylor M, McManus KRJ. Blood pressure monitoring in pregnancy (BuMP) feasibility study; a qualitative study of women's experiences of self-monitoring. *BMC Pregnancy and Childbirth*. 2017. In Press.
37. Ross-McGill H, Hewison J, Hirst J, Dowswell T, Holt A, Brunskill P, Thornton JG. Antenatal home blood pressure monitoring: a pilot randomised controlled trial. *BJOG Int J Obstet Gynaecol*. 2000;107(2):217–21.
38. Brown MA, McHugh L, Mangos G, Davis G. Automated self-initiated blood pressure or 24-hour ambulatory blood pressure monitoring in pregnancy? *BJOG Int J Obstet Gynaecol* 2004, 111(1):38–41.
39. Chandiramani M, Boyce T, Waugh JJS. Is self blood pressure monitoring equivalent to clinic blood pressure monitoring in the hypertensive pregnant population. *Hypertens Pregnancy*. 2006;25:167–7.
40. Ishikuro M, Obara T, Metoki H, Ohkubo T, Yamamoto M, Akutsu K, Sakurai K, Iwama N, Katagiri M, Yagihashi K, et al. Blood pressure measured in the clinic and at home during pregnancy among nulliparous and multiparous women: the BOSH study. *Am J Hypertens*. 2013;26(1):141–8.
41. Rey E, Morin F, Boudreault J, Pilon F, Vincent D, Ouellet D. Blood pressure assessments in different subtypes of hypertensive pregnant women: office versus home patient- or nurse-measured blood pressure. *Hypertens Pregnancy*. 2009;28(2):168–77.
42. Wu P, van den Berg C, Alfirevic Z, O'Brien S, Rothlisberger M, Baker PN, Kenny LC, Kublickiene K, Duvekot JJ. Early pregnancy biomarkers in pre-eclampsia: a systematic review and meta-analysis. *Int J Mol Sci*. 2015;16(9):23035–56.
43. Chappell LC, Bramham K, Shennan AH. Short-term prediction of preeclampsia: how close are we? *Biomark Med*. 2014;8(4):455–8.
44. Redman C. Pre-eclampsia: a complex and variable disease. *Pregnancy Hypertens*. 2014;4(3):241–2.

Submit your next manuscript to BioMed Central and we will help you at every step:

- We accept pre-submission inquiries
- Our selector tool helps you to find the most relevant journal
- We provide round the clock customer support
- Convenient online submission
- Thorough peer review
- Inclusion in PubMed and all major indexing services
- Maximum visibility for your research

Submit your manuscript at
www.biomedcentral.com/submit

