

## Telemonitoring and/or self-monitoring of blood pressure in hypertension (TASMINH4)

Franssen, Marloes; Farmer, Andrew; Grant, Sabrina; Greenfield, Sheila; Hodgkinson, James; Jowett, Sue; Martin, Una; Milner, Siobhan; Monahan, Mark; Ogburn, Emma; Perera-Salazar, Rafael; Schwartz, Claire; Yu, Ly-Mee; McManus, Richard

DOI:

[10.1186/s12872-017-0494-5](https://doi.org/10.1186/s12872-017-0494-5)

License:

Creative Commons: Attribution (CC BY)

*Document Version*

Publisher's PDF, also known as Version of record

*Citation for published version (Harvard):*

Franssen, M, Farmer, A, Grant, S, Greenfield, S, Hodgkinson, J, Jowett, S, Martin, U, Milner, S, Monahan, M, Ogburn, E, Perera-Salazar, R, Schwartz, C, Yu, L-M & McManus, R 2017, 'Telemonitoring and/or self-monitoring of blood pressure in hypertension (TASMINH4): protocol for a randomised controlled trial', *BMC Cardiovascular Disorders*, vol. 17, 58. <https://doi.org/10.1186/s12872-017-0494-5>

[Link to publication on Research at Birmingham portal](#)

### General rights

Unless a licence is specified above, all rights (including copyright and moral rights) in this document are retained by the authors and/or the copyright holders. The express permission of the copyright holder must be obtained for any use of this material other than for purposes permitted by law.

- Users may freely distribute the URL that is used to identify this publication.
- Users may download and/or print one copy of the publication from the University of Birmingham research portal for the purpose of private study or non-commercial research.
- User may use extracts from the document in line with the concept of 'fair dealing' under the Copyright, Designs and Patents Act 1988 (?)
- Users may not further distribute the material nor use it for the purposes of commercial gain.

Where a licence is displayed above, please note the terms and conditions of the licence govern your use of this document.

When citing, please reference the published version.

### Take down policy

While the University of Birmingham exercises care and attention in making items available there are rare occasions when an item has been uploaded in error or has been deemed to be commercially or otherwise sensitive.

If you believe that this is the case for this document, please contact [UBIRA@lists.bham.ac.uk](mailto:UBIRA@lists.bham.ac.uk) providing details and we will remove access to the work immediately and investigate.

STUDY PROTOCOL

Open Access



# Telemonitoring and/or self-monitoring of blood pressure in hypertension (TASMINH4): protocol for a randomised controlled trial

Marloes Franssen<sup>1</sup>, Andrew Farmer<sup>1</sup>, Sabrina Grant<sup>2</sup>, Sheila Greenfield<sup>2</sup>, Carl Heneghan<sup>1</sup>, Richard Hobbs<sup>1</sup>, James Hodgkinson<sup>2</sup>, Susan Jowett<sup>2</sup>, Jonathan Mant<sup>3</sup>, Una Martin<sup>2</sup>, Siobhan Milner<sup>2</sup>, Mark Monahan<sup>2</sup>, Emma Ogburn<sup>1</sup>, Rafael Perera-Salazar<sup>1</sup>, Claire Schwartz<sup>1</sup>, Ly-Mee Yu<sup>1</sup> and Richard J. McManus<sup>1\*</sup>

## Abstract

**Background:** Self-monitoring of hypertension is associated with lower systolic blood pressure (SBP). However, evidence for the use of self-monitoring to titrate antihypertensive medication by physicians is equivocal. Furthermore, there is some evidence for the efficacy of telemonitoring in the management of hypertension but it is not clear what this adds over and above self-monitoring. This trial aims to evaluate whether GP led antihypertensive titration using self-monitoring results in lower SBP compared to usual care and whether telemonitoring adds anything to self-monitoring alone.

**Methods/Design:** This will be a pragmatic primary care based, unblinded, randomised controlled trial of self-monitoring of BP with or without telemonitoring compared to usual care. Eligible patients will have poorly controlled hypertension (>140/90 mmHg) and will be recruited from primary care. Participants will be individually randomised to either usual care, self-monitoring alone, or self-monitoring with telemonitoring. The primary outcome of the trial will be difference in clinic SBP between intervention and control groups at 12 months adjusted for baseline SBP, gender, BP target and practice. At least 1110 patients will be sufficient to detect a difference in SBP between self-monitoring with or without telemonitoring and usual care of 5 mmHg with 90% power with an adjusted alpha of 0.017 (2-sided) to adjust for all three pairwise comparisons. Other outcomes will include adherence of anti-hypertensive medication, lifestyle behaviours, health-related quality of life, and adverse events. An economic analysis will consider both within trial costs and a model extrapolating the results thereafter. A qualitative sub study will gain insights into the views, experiences and decision making processes of patients and health care professionals focusing on the acceptability of self-monitoring and telemonitoring in the routine management of hypertension.

**Discussion:** The results of the trial will be directly applicable to primary care in the UK. If successful, self-monitoring of BP in people with hypertension would be applicable to hundreds of thousands of individuals in the UK.

**Trial registration:** ISRCTN 83571366. Registered 17 July 2014

**Keywords:** Hypertension, Self-monitoring, Telemonitoring, Primary care

\* Correspondence: richard.mcmanus@phc.ox.ac.uk

<sup>1</sup>Nuffield Department of Primary Care, Oxford University, Oxford, UK  
Full list of author information is available at the end of the article



## Background

Blood pressure (BP) is a key risk factor for cardiovascular disease, the largest cause of morbidity and mortality worldwide [1, 2]. A 10 mmHg reduction in BP is estimated to lead to a 41% reduction in stroke and a 22% reduction in coronary heart disease [3]. National and international surveys suggest that, despite significant improvements in recent years, BP control within the population remains sub-optimal [4–7]. Self-monitoring as an intervention has been shown to reduce BP [8, 9], improve adherence to antihypertensive medication [10], and reduce primary care consultation rates at no additional cost [11]. Telemonitoring is associated with reduced BP but there are limited data relevant to a UK context, particularly with longer than 6 months follow-up [12, 13]. Furthermore, the evidence concerning the use of self-monitoring to guide GPs to titrate antihypertensives is equivocal with one systematic review finding the effect of self-monitoring on BP reduction becomes non-significant when a medication titration protocol is used [14].

The current (2004, updated 2006 & 2011) National Institute for Health and Care Excellence (NICE) guideline states: “the value of routinely using ... home (BP) monitoring devices has not been established: their appropriate use in primary care remains an issue for further research” [15]. This trial aims to evaluate whether GP led antihypertensive titration using self-monitoring results in lower systolic BP (SBP) compared to usual care and whether telemonitoring reduces BP over and above self-monitoring alone.

## Methods and design

### Study aims, research questions and outcomes

The primary aim of TASMING4 is to compare the management of hypertension in primary care using self-monitored BP to make treatment decisions, with or without telemonitoring, with usual care.

The trial has four main research questions:

1. Does self-monitoring guided titration of antihypertensive medication, with or without telemonitoring, lead to better BP control in people with hypertension in primary care?
2. Does self-monitoring guided titration of antihypertensive medication with telemonitoring lead to better BP control than self-monitoring guided titration using paper-based recording of BP?
3. Is the management of hypertension through self-monitoring cost-effective?
4. What are the views of patients and their clinicians regarding self-monitoring guided titration of antihypertensive medication, with or without telemonitoring?

The primary outcome of the trial will be the difference in SBP (mean of 2<sup>nd</sup>/3<sup>rd</sup> readings, mmHg) at 12 month follow-up between intervention and control adjusted for baseline BP, gender, BP target, CVD history and practice.

Secondary outcomes (see Table 1, in each case also adjusted for baseline values and co-variables) will include:

#### Blood Pressure Outcomes

- Difference in SBP at 6 months follow up between intervention and control
- Difference in diastolic BP at six and 12 months follow up between intervention and control
- All BP comparisons using mean of 2<sup>nd</sup>-6<sup>th</sup> readings (BP-Tru automated blood pressure monitor, (BP TRU BPM 200; BP TRU Medical Devices, Coquitlam, BC, Canada) [16].

**Table 1** Data collection throughout the trial

Baseline only:

1. Demographic questions: including age, race, marital status, occupation, and education
2. Duration of hypertension [from notes]
3. Past medical history [from notes and corroborated by patients]
4. Contraindications to anti-hypertensives
5. Short orientation memory test [22]
6. Height

Baseline and follow-up:

1. New medical history (in last 6/12 months)
2. Blood pressure (sitting plus standing)
3. Current anti-hypertensive medications including complementary herbal or dietary supplements for BP lowering
4. Weight and waist circumference
5. Symptoms part plus short form of Illness Perception Questionnaire [23]
6. Short-form of the State-Trait Anxiety Inventory [24]
7. EQ-5D 5L [25]
8. BP measurement preference [26] [Baseline and 12 m follow up only]
9. Medication Adherence Rating Scale (MARS) Questionnaire [27] [Baseline and 12 m follow up only]
10. Beliefs about Medicines Questionnaire [28] [Baseline and 12 m follow up only]
11. Stanford Expectations of Treatment Scale (SETS) Items 1–6 [29] [Baseline and 12 m follow up only]
12. Lifestyle questions: alcohol (Audit-C [30]), diet (Short Food Frequency Questionnaire [31]), exercise (Godin Leisure-Time Exercise Questionnaire [32]), smoking (Smoking tool kit [33]) [Baseline and 12 m follow up only]

**Tertiary Outcomes****Adverse events**

- Clinical Events: admissions, cardiovascular events, deaths
- Anxiety
- Side effects of medication

**Medication Outcomes**

- Medication prescription: both number and defined daily dose
- Adherence to medication
- Beliefs about medicines, expectations of treatment, illness perceptions

**Fidelity to intervention**

- GP fidelity to medication titration protocol
- Patient fidelity to monitoring regime

**Lifestyle**

- Alcohol, diet, smoking, exercise

**Quality of Life**

- EQ-5D-5L

**Economic Outcomes:**

- Resource use and costs
- Within trial effectiveness will be assessed in terms of cost per 1 mmHg blood pressure reduction. Long term cost effectiveness will be assessed by linking differences in blood pressure observed in the trial to cardiovascular events with a lifetime horizon.

**Qualitative Analysis:**

The views of patients and clinicians will be assessed through depth interviews in the qualitative sub study (see below for further details).

**Study design and setting**

TASMINH4 is a pragmatic unblinded individual patient randomised controlled trial with automated ascertainment of outcome and embedded economic and qualitative analyses.

**Study population**

The study population will comprise people with poorly controlled hypertension managed in primary care. Eligibility criteria will be: age over 35 years, on the hypertension register, not already taking more than 3

anti-hypertensive agents, BP above 140/90 mmHg at the baseline clinic, and on a stable dose of current antihypertensive medication for at least 4 weeks prior to trial entry. Exclusion criteria will be orthostatic hypotension (20 mmHg or more systolic drop after standing for one minute, in order to avoid adverse events), BP not managed by their GP (limited possibility of antihypertensive titration), diagnosed atrial fibrillation (automated monitors not validated), unwilling to self-monitor, dementia or score over 10 on the short orientation memory concentration test (inability to undertake self-monitoring), female participant who is pregnant, lactating or planning pregnancy during the trial (management of essential hypertension in pregnancy is different), the partner or spouse of an individual already randomised in the trial (to avoid clustering within families), Chronic Kidney Disease (CKD) grade four or worse, any grade of CKD with proteinuria (both may have different BP targets), participants who have participated in another research trial involving antihypertensive medication in the past 4 weeks.

Potentially eligible patients will be identified from general practices via the UK Clinical Research Network (CRN). GP surgery staff supported by the research team/CRN will conduct a practice-based computer search to identify patients that fulfil the eligibility criteria. GPs will be asked to check these computer generated lists and to remove people who are known to have terminal illnesses, those not managed by the GP and those thought to be unsuitable for the study in the opinion of the GP. The remainder will receive a postal invitation with a reminder after two weeks. Those wishing to decline participation may voluntarily return a form detailing basic demographic details as well as their reasons for declining.

**Baseline clinics**

Patients will attend an initial baseline clinic where the study will be explained, informed consent gained, clinical measurements (height, weight, and BP) taken, demographics, past medical history, and key health behavioural and attitudinal related data collected (Table 1) by a trained researcher (either a research nurse, trained practice nurse, or member of the research team). Measurement of BP will use a validated automated electronic sphygmomanometer (BP TRU BPM 200). After five minutes of rest, six seated BP readings will be taken at 1-min intervals, of which the mean of the 2<sup>nd</sup> and 3<sup>rd</sup> reading will comprise the primary outcome. Randomisation will take place at the end of the baseline clinic.

**Randomisation**

Patients will be randomised into one of three groups: self-monitoring alone, self-monitoring and telemonitoring, or

usual care (1:1:1), using a fully-validated internet based randomisation system with manual telephone-based back up. Randomisation will be stratified by practice and minimisation, with a non-deterministic algorithm, will be used to ensure balance in baseline BP, gender and BP target (standard, older person or diabetic) across the groups.

### Intervention and control groups

**Usual care** will consist of the participant's BP being measured by their GP and/ or nurse at their practice, and adjustment of medication based on these measurements at the discretion of the health care professional.

The participants in the **self-monitoring** groups (self-monitoring alone and self-monitoring with telemonitoring) will be trained to monitor their BP using an automated electronic sphygmomanometer (Omron M10-IT) [17]. Patients will self-monitor BP daily for the first week of each month of the study. They will take their BP twice in the morning and evening (i.e. four times in all per day) [15]. Participant training will include instructions as to what to do in the presence of a high or low reading, using a guideline that contains simple colour-coded instructions. Very high or very low readings that persist when a third reading is taken five minutes after the second reading will trigger the patient to contact their practice for further advice.

### Medication reviews

All participants will be asked to book an appointment approximately one week later with the GP or practice nurse for a medication review. For the patients in the usual care arm, the GP will review the medication based on BP measurements taken in the clinic. The patients in the self-monitoring arms will monitor their BP for a week and bring the readings to their appointment. The GP will base the medication review on the readings done by the patient at home. After the medication review the GP/ nurse will register the patients in the telemonitoring arm on the text system and will train the patient in using the system.

### Communication of home readings

#### **Self-monitoring group**

Participants in the self-monitoring group will complete a simple two-part carbon copy form each month to record their daily BP readings, one copy to be kept by the patient, and one posted to the practice in a reply-paid envelope. The GP/ nurse will be asked to review these BP readings each month to determine whether a change in medication is required and the GP/ nurse will contact the patient if a medication change is required. At follow-up (6 and 12 months), data from participants' BP machines will be uploaded and sent to the research team.

#### **Telemonitoring group**

Participants will be trained in the use of the telemonitoring equipment before commencing. Participants in the telemonitoring group will send their readings to a secure centralised database using a free SMS text message with web-based data entry back up. They will receive a reminder the day before their week of measurements, and two additional reminders in the week if no measurements are received by the system. Mean BP will be calculated automatically. High or low readings will trigger text alerts to the patient to contact their surgery for a BP check. The GP/ nurse will review the readings on a monthly basis via a web-based interface to determine whether a change in medication is required and the GP/ nurse will contact the patient if a medication change is required. At follow-up (6 and 12 months), data from participants' BP machines will be uploaded and sent to the research team.

#### **Target blood pressure**

Target BP will be based on the NICE hypertension guideline with adjustment downwards by 5/5 mmHg for home as compared to office readings [18]. Thus people without diabetes under 80 years will have a home target of  $\leq 135/85$  mmHg; people over 80 years will have a home target of  $\leq 145/85$  mmHg; finally, people with diabetes will have a home target of  $\leq 135/75$  mmHg [15]. People requiring lower than standard targets will be excluded (hence the exclusions for CKD4 and proteinuria) (see Table 2).

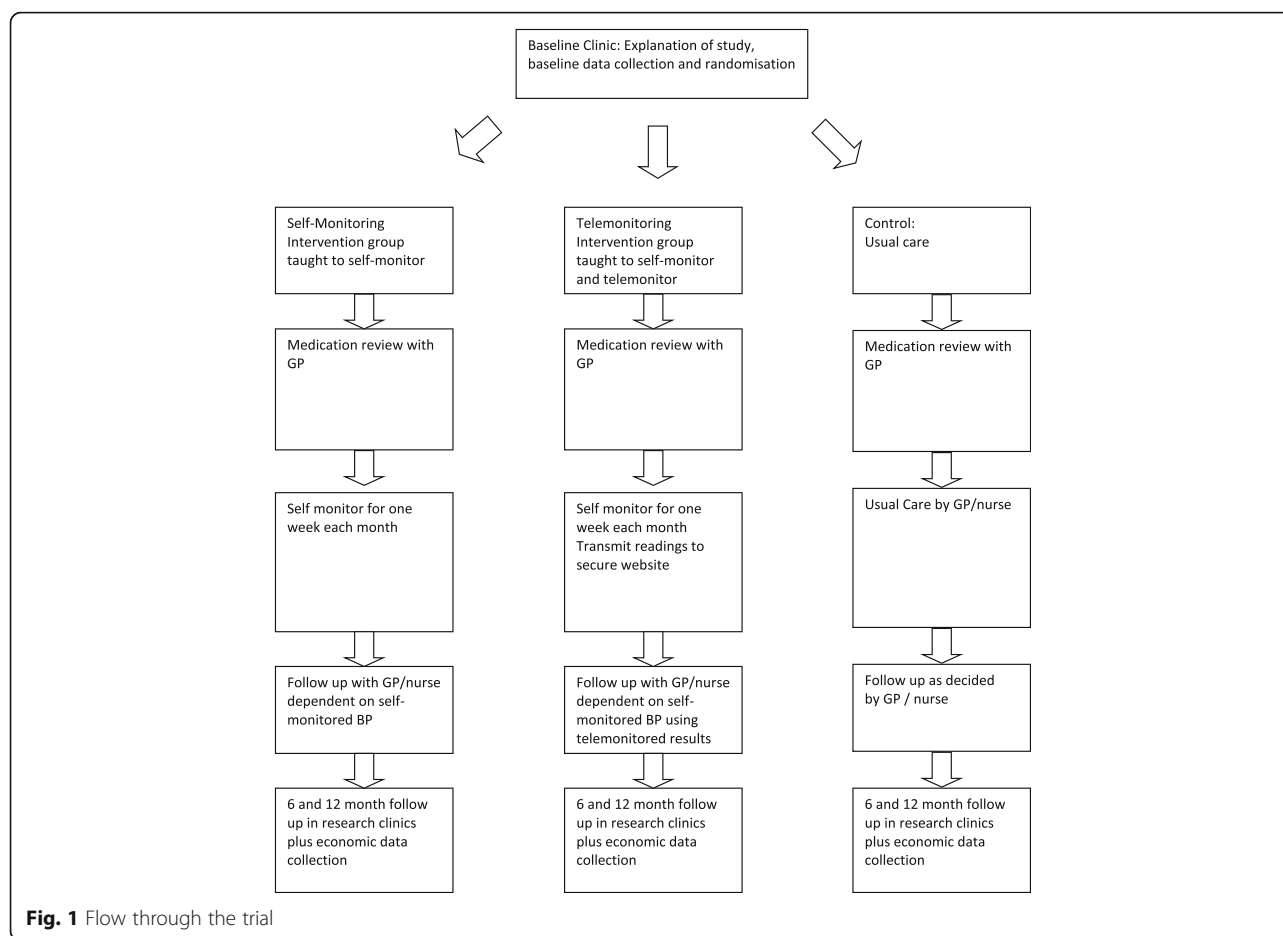
#### **Follow-up**

All patients will be asked to attend two follow-up clinics; 1 at 6 months and 1 at 12 months. Each clinic will be timetabled for no more than an hour, during which patients will have their BP and weight measured by the research team and will be asked to complete a questionnaire similar to the one completed at baseline. Participant flow through the trial is shown in Fig. 1. All data is collected on a case report form especially designed for the study.

Patients who withdraw will not be replaced, but asked if they are prepared to attend follow-up clinics.

**Table 2** Blood Pressure targets for the different groups for home readings and for readings taken in clinic

Readings	BP target (mmHg)	
	Taken at home	Taken in clinic
<80 years	$\leq 135/85$	$\leq 140/90$
>80 years	$\leq 145/85$	$\leq 150/90$
Diabetic	$\leq 135/75$	$\leq 140/80$



### Sample size considerations

The study requires a total sample of 1110 patients to be recruited with 370 patients in each arm. This is based on an assumption of a common standard deviation of 17 mmHg and a three way pairwise comparison. At least 367 participants per group (allowing for 15% attrition) would allow detection of a 5 mmHg difference between the groups (i.e. standardised effect size = 0.3) with 90% power and an adjusted alpha of 0.017 (2-sided) to account for all three pairwise comparisons. We estimate that around 120–150 practices will be required to recruit this size of sample, assuming an average list size of 7000, with a prevalence of hypertension of 13%, of whom 16% will respond to a trial invitation and 40% of these will be eligible. This corresponds to around 7–10 patients per practice of 7000 patients.

### Statistical analysis

Analysis will be on an intention-to-treat basis. A mixed model will analyse the primary outcome utilising data collected at 6 and 12 months from randomisation, adjusting for baseline BP measure and minimisation variables. An advantage of the mixed model is that it implicitly accounts

for data missing at random. The model will include a random intercept for each participant to account for the repeated measures on the same participant. Time and randomised group will be fitted as fixed effects, with minimisation variables, region and history of CVD fitted as covariates. An interaction term between time and randomisation group will be included so that possible differences of treatment effect can be assessed at each time point. Similar methods will be used for other continuous outcomes. The two self-monitoring groups will first be compared to the usual care group. If both treatments are found to be more effective than usual care, they will be compared to each other.

Sensitivity analyses will be carried out to examine the robustness of the results with different assumptions about departures from randomisation policies and handling of missing data. A detailed statistical analysis plan will be prepared before any analyses are undertaken and before the trial database is locked.

### Data management

Double data entry will be employed for all trial paperwork. The second data entry person will resolve

differences between first and second pass (differences will be identified at point of submission by the data entry module within OpenClinica).

#### **Potential risks**

It is anticipated that the potential risks of this study are low and similar to those attributable to usual care. A particular issue is the possibility of increased anxiety where a patient finds an excessively high or low reading. The patient guideline will advise contact with the supervising physician or nurse in the case of excessively high or low readings. Training of participants will cover repeated measurements in the case of unusually high or low readings and a study “Freephone” helpline will be available in the guideline. Data on adverse events will be collected.

#### **Economic sub-study**

The economic evaluation will comprise both a within-trial analysis and model-based analysis to extrapolate beyond the trial results.

##### *a) Trial-based analysis*

NHS costs will be determined for health care resource use over the 12 month follow-up period of the trial. Resource use will include primary care consultations (GP and practice nurse visits), secondary care referrals, hospital inpatient stays and antihypertensive medications. Data on trial-specific resources such as consultations, equipment for self-monitoring and telemonitoring and training will also be collected. Unit costs will be derived from published sources.

The cost-effectiveness analysis will consider the cost per additional 1 mmHg reduction in Systolic BP from baseline to 12 months. A cost-utility analysis will determine the cost per Quality-Adjusted Life Year (QALY) gained over the same period, using patient responses to the EQ-5D 5L. The results for both outcomes will be expressed in terms of Incremental Cost-Effectiveness Ratios (ICERs). The base case economic evaluation will adopt an NHS perspective. The analysis will also consider all three arms of the trial, comparing self-monitoring with and without telemonitoring to usual care.

Sensitivity analysis will test the robustness of the results. Key parameters will be varied to determine the impact of changes on results. Non-parametric bootstrapping and probabilistic sensitivity analysis will be undertaken to explore uncertainty in the confidence to be placed on the results of the economic analysis and cost effectiveness acceptability curves presented.

##### *b) Model-based analysis*

A Markov model-based analysis with patient level simulation will consider long-term cost effectiveness by linking intermediate outcomes (i.e. change in BP) to cardiovascular events, and will consider the BP monitoring options within the trial and usual care. The model will determine the cost per additional QALY gained for alternative monitoring scenarios.

Data from the trial and literature will inform the probability of these events occurring and the risk reduction afforded by the alternative strategies. Attached to each health state will be associated health state utility values in order that QALYs can be calculated. Quality of life on each treatment strategy will be obtained from the trial data on EQ-5D 5L, and previous studies will inform utility values for cardiovascular disease health states. Costs of monitoring and the therapies prescribed in each strategy and acute and long term costs of cardiovascular events will be obtained within the trial and from the literature.

The base-case will be conducted from a health and personal social services perspective. The model will be run over patient lifetime, with costs and benefits discounted at a rate of 3.5% [19]. In order to explore uncertainties in the analyses, deterministic sensitivity analysis will test the robustness of the model when varying key model parameters and structural assumptions, including assumptions around side effects of treatment and adherence to medication. Probabilistic sensitivity analysis will be undertaken to incorporate the uncertainty around parameter values and quantify the overall decision uncertainty, and inform whether further research is required.

#### **Qualitative sub-study**

The qualitative component of the trial will gain insights into the views, experiences and decision-making processes of patients and health care professionals regarding self-monitoring and telemonitoring in the routine management of hypertension.

It is anticipated that up to 30 patients and up to 30 clinicians who have taken part in the trial will be interviewed. Where carers were involved in the process of hypertension care, they will be invited to join the patient interviews. Participants will be selected purposively from participating practices to ensure a maximum variety sample reflecting the range of professional and participant characteristics [20]. Interviews will take place when participants have had a minimum of 6 months trial participation to ensure current relevance to study.

Consent will be sought from all patients, informal carers/relatives and health care professionals taking part, including for the use of anonymised quotes.

The interviews will focus on identifying perceived barriers and facilitators to implementing either the telemonitoring or paper-based system in routine practice. Decisional processes and information sharing between patient, practitioner and practice staff relating to implementation will be further explored. Interviews will be recorded and transcribed verbatim.

Interviews will be analysed thematically to bring out both ‘articulated’ data (direct responses to questions on the areas described above) as well as ‘emergent’ data (new information which emerges from comparison of themes) [21].

## Discussion

This article describes the protocol for the TASMINH4 study, a randomised controlled trial assessing whether GP led antihypertensive titration using self-monitoring results in lower SBP compared to usual care and whether telemonitoring reduces BP over and above self-monitoring alone.

The results will provide data on the effects of self-monitoring with or without telemonitoring as a means of titrating blood pressure in UK primary care. Secondary outcomes will include a process evaluation and information about potential harms. Linked qualitative and economic work will aid understanding of how these interventions have worked in practice and cost effectiveness.

The results of the trial will be directly applicable to primary care in the UK. If antihypertensive drug titration in primary care using self-monitoring of BP is found to be successful in the management of hypertension, then it would be applicable to many hundreds of thousands of individuals in the UK. Importantly the trial will also inform the use (or not) of telemonitoring alongside self-monitoring of BP, feeding into guidelines in the UK and beyond.

## Abbreviations

BP: Blood pressure; CKD: Chronic kidney disease; CVD: Cardiovascular disease; EQ-5D-5L: European Questionnaire 5 Dimensions; GP: General practitioner; ICERs: Incremental cost-effectiveness ratios; mmHg: Millimetre of mercury; NHS: National Health Service; NICE: National Institute for Health and Care Excellence; QALY: Quality-adjusted life year; SBP: Systolic blood pressure; UK-CRN: United Kingdom clinical research network

## Acknowledgements

The authors acknowledge the support of the Primary Care Clinical Trials Unit, Birmingham and the Black Country CRN staff, NIHR Primary Care CRN staff, Carla Betts, Rebecca Brice, Maureen Dawson and Bethany Dunbabin for administrative support. David Yeomans and Derek Shaw have served as patient representatives for the trial management and steering groups. Additional members of the trial steering group are Prof Mike Moore (chair), Prof Pip Logan and Dr Chris Clark. Members of the data monitoring committee are Dr Martyn Lewis (chair), Dr Emma Bray, and Prof Sarah Purdy. The sponsor and funder had no role in the study design, writing of the paper; or the decision to submit this protocol for publication, which was made jointly by the authors who have all approved the final manuscript.

Finally this work would not be possible without the support of the participating practices and patients.

## Funding

The trial is funded by an NIHR Programme grant, and by an NIHR Professorship awarded to Prof RJ McManus, the Chief Investigator. Omron have provided the blood pressure self-monitoring equipment via an unrestricted grant. Service support costs are administered through the NIHR Clinical Research Network: West Midlands. Professors Hobbs and Professor Farmer are NIHR Senior Investigators.

This article presents independent research commissioned by the National Institute for Health Research (NIHR) under a Programme Grant for Applied Research (RP-PG-1209-10051). The views expressed in this publication are those of the authors and not necessarily those of the NHS, the NIHR or the Department of Health. Sponsor: Oxford University (crtg@admin.ox.ac.uk).

## Availability of data and materials

Not applicable as this is a study protocol and does not contain data or results.

## Authors' contributions

RJM had the original idea with JH, SG, SM, SJ, UM, SG, RP, LY, CH, CS, AF, RH and JM and gained the funding. MF and RJM wrote the first draft, LMY provided the statistical section. SJ and MM provided the health economic section, SG, JH and SG provided the qualitative section. All authors subsequently critically edited the manuscript. RJM will be guarantor for the manuscript. All authors read and approved the final manuscript.

## Competing interests

Prof McManus has received research support in terms of equipment from Lloyds Pharmacies and Omron. He has received honoraria and travel expenses for speaking at the Japanese Society of Hypertension and American Society of Nephrology. Prof Farmer has received funding from the NIHR Oxford Biomedical Research Centre and is a NIHR Senior Investigator. Prof Hobbs is supported by NIHR Oxford CLAHRC and Harris Manchester College and has received limited research support from Microlife and Omron for BP monitoring equipment. The authors declare that they have no competing interests.

## Consent for publication

Not applicable.

## Ethics approval and consent to participate

Ethical approval has been obtained from South Central – Oxford B ethics committee (reference: 14/SC/0218). Changes will be communicated to the ethics committee. Site specific approval has been obtained from the West Midlands as a whole, and locally from all relevant Primary Care Organisations. A trial steering group will monitor study progress. A data monitoring committee, independent of the sponsor, will review the study. Participants provided written informed consent prior to enrolment.

## Author details

<sup>1</sup>Nuffield Department of Primary Care, Oxford University, Oxford, UK. <sup>2</sup>Primary Care Clinical Sciences, University of Birmingham, Birmingham, UK. <sup>3</sup>Department of Public Health and Primary Care, University of Cambridge, Cambridge, UK.

Received: 10 December 2016 Accepted: 7 February 2017

Published online: 13 February 2017

## References

- Kearney PM, Whelton M, Reynolds K, Muntner P, Whelton PK, He J. Global burden of hypertension: analysis of worldwide data. *Lancet*. 2005;365(9455):217–23.
- Lozano R, Naghavi M, Foreman K, Lim S, Shibuya K, Aboyans V, Abraham J, Adair T, Aggarwal R, Ahn SY, et al. Global and regional mortality from 235 causes of death for 20 age groups in 1990 and 2010: a systematic analysis for the Global Burden of Disease Study 2010. *Lancet*. 2012;380(9859):2095–128.
- Law MR, Morris JK, Wald NJ. Use of blood pressure lowering drugs in the prevention of cardiovascular disease: meta-analysis of 147 randomised trials in the context of expectations from prospective epidemiological studies. *BMJ*. 2009;338:b1665.



4. Wolf-Maier K, Cooper RS, Kramer H, Banegas JR, Giampaoli S, Joffres MR, Poulter N, Primatesta P, Stegmayr B, Thamm M. Hypertension treatment and control in five European countries, Canada, and the United States. *Hypertension*. 2004;43(1):10–7.
5. Falaschetti E, Chaudhury M, Mindell J, Poulter N. Continued improvement in hypertension management in England: results from the Health Survey for England 2006. *Hypertension*. 2009;53(3):480–6.
6. Falaschetti E, Mindell J, Knott C, Poulter N. Hypertension management in England: a serial cross-sectional study from 1994 to 2011. *Lancet*. 2014; 383(9932):1912–9.
7. The Information Centre for Health and Social Care. In: Health DoEaP, editor. *Health survey for England*, vol. 1. London: Health and Social Care Information Centre; 2011.
8. Uhlig K, Patel K, Ip S, Kitsios GD, Balk EM. Self-measured blood pressure monitoring in the management of hypertension: a systematic review and meta-analysis. *Ann Intern Med*. 2013;159(3):185–94.
9. Fletcher BR, Hartmann-Boyce J, Hinton L, McManus RJ. The effect of self-monitoring of blood pressure on medication adherence and lifestyle factors: a systematic review and meta-analysis. *Am J Hypertens*. 2015; 28(10):1209–21.
10. Ogedegbe G, Schoenthaler A. A systematic review of the effects of home blood pressure monitoring on medication adherence. *J Clin Hypertens (Greenwich)*. 2006;8(3):174–80.
11. McManus RJ, Mant J, Roalfe A, Oakes RA, Bryan S, Pattison HM, Hobbs FD. Targets and self monitoring in hypertension: randomised controlled trial and cost effectiveness analysis. *BMJ*. 2005;331(7515):493.
12. McKinstry B, Hanley J, Wild S, Pagliari C, Paterson M, Lewis S, Sheikh A, Krishan A, Stoddart A, Padfield P. Telemonitoring based service redesign for the management of uncontrolled hypertension: multicentre randomised controlled trial. *BMJ*. 2013;346:f3030.
13. Omboni S, Gazzola T, Carabelli G, Parati G. Clinical usefulness and cost effectiveness of home blood pressure telemonitoring: meta-analysis of randomized controlled studies. *J Hypertens*. 2013;31(3):455–67. discussion 467–458.
14. Agarwal R, Bills JE, Hecht TJ, Light RP. Role of home blood pressure monitoring in overcoming therapeutic inertia and improving hypertension control: a systematic review and meta-analysis. *Hypertension*. 2011;57(1):29–38.
15. Hypertension: Clinical management of primary hypertension in adults. [<http://www.nice.org.uk/guidance/cg127/chapter/1-recommendations#measuring-blood-pressure>]. Accessed 1 July 2015
16. Mattu GS, Heran BS, Wright JM. Overall accuracy of the BpTRU—an automated electronic blood pressure device. *Blood Press Monit*. 2004;9(1): 47–52.
17. Belghazi J, El Feghali RN, Moussalem T, Rejdych M, Asmar RG. Validation of four automatic devices for self-measurement of blood pressure according to the International Protocol of the European Society of Hypertension. *Vasc Health Risk Manag*. 2007;3(4):389–400.
18. Krause T, Lovibond K, Caulfield M, McCormack T, Williams B, Guideline Development G. Management of hypertension: summary of NICE guidance. *BMJ*. 2011;343:d4891.
19. Guide to methods of technology appraisal. [<https://www.nice.org.uk/article/pmg9/>]. Accessed 10 Feb 2016.
20. Patton MQ. *Qualitative evaluation and research methods*. 2nd ed. Newbury Park: Sage; 1990.
21. Massey OT. A proposed model for the analysis and interpretation of focus groups in evaluation research. *Eval Program Plann*. 2011;34(1):21–8.
22. Katzman R, Brown T, Fuld P, Peck A, Schechter R, Schimmel H. Validation of a short Orientation-Memory-Concentration Test of cognitive impairment. *Am J Psychiatry*. 1983;140(6):734–9.
23. Moss-Morris R, Weinman J, Petrie KJ, Horne R, Cameron L, Buick D. The revised illness and perception questionnaire (IPQ-R). *Psychol Health*. 2002;17(1):1–16.
24. Marteau TM, Bekker H. The development of a six-item short-form of the state scale of the Spielberger State-Trait Anxiety Inventory (STAI). *Br J Clin Psychol*. 1992;31(Pt 3):301–6.
25. Herdman M, Gudex C, Lloyd A, Janssen M, Kind P, Parkin D, Bonsel G, Badia X. Development and preliminary testing of the new five-level version of EQ-5D (EQ-5D-5L). *Qual Life Res*. 2011;20(10):1727–36.
26. Little P, Barnett J, Barnsley L, Marjoram J, Fitzgerald-Barron A, Mant D. Comparison of acceptability of and preferences for different methods of measuring blood pressure in primary care. *BMJ*. 2002;325(7358):258–9.
27. Horne R, Weinman J. Patients' beliefs about prescribed medicines and their role in adherence to treatment in chronic physical illness. *J Psychosom Res*. 1999;47(6):555–67.
28. Horne R, Weinman J, Hankins M. The beliefs about medicines questionnaire: The development and evaluation of a new method for assessing the cognitive representation of medication. *Psychol Health*. 1999;14(1):1–24.
29. Younger J, Gandhi V, Hubbard E, Mackey S. Development of the Stanford Expectations of Treatment Scale (SETS): a tool for measuring patient outcome expectancy in clinical trials. *Clin Trials*. 2012;9(6):767–76.
30. Alcohol Use Disorders Identification Test Consumption (AUDIT-C). [<http://www.alcohollearningcentre.org.uk/Topics/Browse/BriefAdvice/?parent=4444&child=4898>]. Accessed 10 Feb 2016.
31. Crozier SR, Inskip HM, Barker ME, Lawrence WT, Cooper C, Robinson SM, Group SWSS. Development of a 20-item food frequency questionnaire to assess a 'prudent' dietary pattern among young women in Southampton. *Eur J Clin Nutr*. 2010;64(1):99–104.
32. Godin G, Shepard RJ. Godin leisure-time exercise questionnaire. *Med Sci Sports Exerc*. 1997;29(6):S36–8.
33. Smoking toolkit study: protocol and methods. [<http://www.smokinginengland.info/sts-documents/>]. Accessed 10 Feb 2016.

Submit your next manuscript to BioMed Central and we will help you at every step:

- We accept pre-submission inquiries
- Our selector tool helps you to find the most relevant journal
- We provide round the clock customer support
- Convenient online submission
- Thorough peer review
- Inclusion in PubMed and all major indexing services
- Maximum visibility for your research

Submit your manuscript at  
[www.biomedcentral.com/submit](http://www.biomedcentral.com/submit)

