

# Environmental predictors of diversity in recent planktonic foraminifera as recorded in marine sediments

Fenton, Isabel; Pearson, Paul; Dunkley Jones, Tom; Purvis, Andy

DOI:

[10.1371/journal.pone.0165522](https://doi.org/10.1371/journal.pone.0165522)

License:

Creative Commons: Attribution (CC BY)

*Document Version*

Publisher's PDF, also known as Version of record

*Citation for published version (Harvard):*

Fenton, I, Pearson, P, Dunkley Jones, T & Purvis, A 2016, 'Environmental predictors of diversity in recent planktonic foraminifera as recorded in marine sediments', *PLoS ONE*.

<https://doi.org/10.1371/journal.pone.0165522>

[Link to publication on Research at Birmingham portal](#)

## **Publisher Rights Statement:**

Checked for eligibility: 31/01/2017

## **General rights**

Unless a licence is specified above, all rights (including copyright and moral rights) in this document are retained by the authors and/or the copyright holders. The express permission of the copyright holder must be obtained for any use of this material other than for purposes permitted by law.

- Users may freely distribute the URL that is used to identify this publication.
- Users may download and/or print one copy of the publication from the University of Birmingham research portal for the purpose of private study or non-commercial research.
- User may use extracts from the document in line with the concept of 'fair dealing' under the Copyright, Designs and Patents Act 1988 (?)
- Users may not further distribute the material nor use it for the purposes of commercial gain.

Where a licence is displayed above, please note the terms and conditions of the licence govern your use of this document.

When citing, please reference the published version.

## **Take down policy**

While the University of Birmingham exercises care and attention in making items available there are rare occasions when an item has been uploaded in error or has been deemed to be commercially or otherwise sensitive.

If you believe that this is the case for this document, please contact [UBIRA@lists.bham.ac.uk](mailto:UBIRA@lists.bham.ac.uk) providing details and we will remove access to the work immediately and investigate.

RESEARCH ARTICLE

# Environmental Predictors of Diversity in Recent Planktonic Foraminifera as Recorded in Marine Sediments

Isabel S. Fenton<sup>1,2\*</sup>, Paul N. Pearson<sup>3</sup>, Tom Dunkley Jones<sup>4</sup>, Andy Purvis<sup>1,2</sup>

**1** Department of Life Sciences, Natural History Museum, Cromwell Road, London SW7 5BD, United Kingdom, **2** Department of Life Sciences, Imperial College London, Silwood Park Campus, Ascot SL5 7PY, United Kingdom, **3** School of Earth and Ocean Sciences, Cardiff University, Cardiff CF10 3AT, United Kingdom, **4** School of Geography, Earth and Environmental Sciences, University of Birmingham, Edgbaston, Birmingham B15 2TT, United Kingdom

\* [isabel.fenton@cantab.net](mailto:isabel.fenton@cantab.net)



## OPEN ACCESS

**Citation:** Fenton IS, Pearson PN, Dunkley Jones T, Purvis A (2016) Environmental Predictors of Diversity in Recent Planktonic Foraminifera as Recorded in Marine Sediments. PLoS ONE 11(11): e0165522. doi:10.1371/journal.pone.0165522

**Editor:** David P. Gillikin, Union College, UNITED STATES

**Received:** September 2, 2015

**Accepted:** October 13, 2016

**Published:** November 16, 2016

**Copyright:** © 2016 Fenton et al. This is an open access article distributed under the terms of the [Creative Commons Attribution License](https://creativecommons.org/licenses/by/4.0/), which permits unrestricted use, distribution, and reproduction in any medium, provided the original author and source are credited.

**Data Availability Statement:** The original diversity data was obtained from the MARGO database (Kučera, M., Rosell-Mele, A., Schneider, R., Waelbroeck, C. & Weinelt, M. (2005) Multiproxy Approach for the Reconstruction of the Glacial Ocean surface (MARGO)). The data and the diversity metrics, as well as the code used to produce this analysis are available from the NHM data portal: <http://dx.doi.org/10.5519/0008953>.

**Funding:** This work was funded by the Natural Environment Research Council UK ("Descent into the Icehouse" project), <http://www.nerc.ac.uk/>, (NERC grant NE/I005595/1), as part of ISF's PhD.

## Abstract

Global diversity patterns are thought to result from a combination of environmental and historical factors. This study tests the set of ecological and evolutionary hypotheses proposed to explain the global variation in present-day coretop diversity in the macroperforate planktonic foraminifera, a clade with an exceptional fossil record. Within this group, marine surface sediment assemblages are thought to represent an accurate, although centennial to millennial time-averaged, representation of recent diversity patterns. Environmental variables chosen to capture ocean temperature, structure, productivity and seasonality were used to model a range of diversity measures across the world's oceans. Spatial autoregressive models showed that the same broad suite of environmental variables were important in shaping each of the four largely independent diversity measures (rarefied species richness, Simpson's evenness, functional richness and mean evolutionary age). Sea-surface temperature explains the largest portion of diversity in all four diversity measures, but not in the way predicted by the metabolic theory of ecology. Vertical structure could be linked to increased diversity through the strength of stratification, but not through the depth of the mixed layer. There is limited evidence that seasonal turnover explains diversity patterns. There is evidence for functional redundancy in the low-latitude sites. The evolutionary mechanism of deep-time stability finds mixed support whilst there is relatively little evidence for an out-of-the-tropics model. These results suggest the diversity patterns of planktonic foraminifera cannot be explained by any one environmental variable or proposed mechanism, but instead reflect multiple processes acting in concert.

## Introduction

Present-day macroecological patterns result from a combination of current environmental and longer-term historical factors acting on clades (e.g. [1, 2]). Typically, past and present causes

The funders had no role in study design, data collection and analysis, decision to publish, or preparation of the manuscript.

**Competing Interests:** The authors have declared that no competing interests exist.

are considered separately: macroecologists usually relate spatial patterns in Recent diversity to current environments [3, 4], whereas palaeobiologists seek historical causes for spatial and temporal patterns in fossil diversity [5, 6]. The disconnect between these two approaches has hampered development of an integrated understanding of these macroecological patterns [7], exacerbated by a discipline-specific focus on different groups. Most neo-macroecological studies concentrate on charismatic terrestrial groups with good distribution records, such as birds (e.g. [4]); unfortunately these groups often have relatively poor fossil records. Conversely, groups with excellent fossil records are usually marine and are less well-known in modern environments [8].

As a step towards bridging this divide between neo- and palaeo-macroecology, we present a new global analysis of Recent site-level diversity of macroperforate planktonic foraminifera—the group with the best species-level fossil record currently known [9]. We go beyond previous macroecological work on this clade (e.g. [10–13]) by considering multiple diversity measures, including functional diversity and mean evolutionary age, to help tease apart different ecological and evolutionary hypotheses.

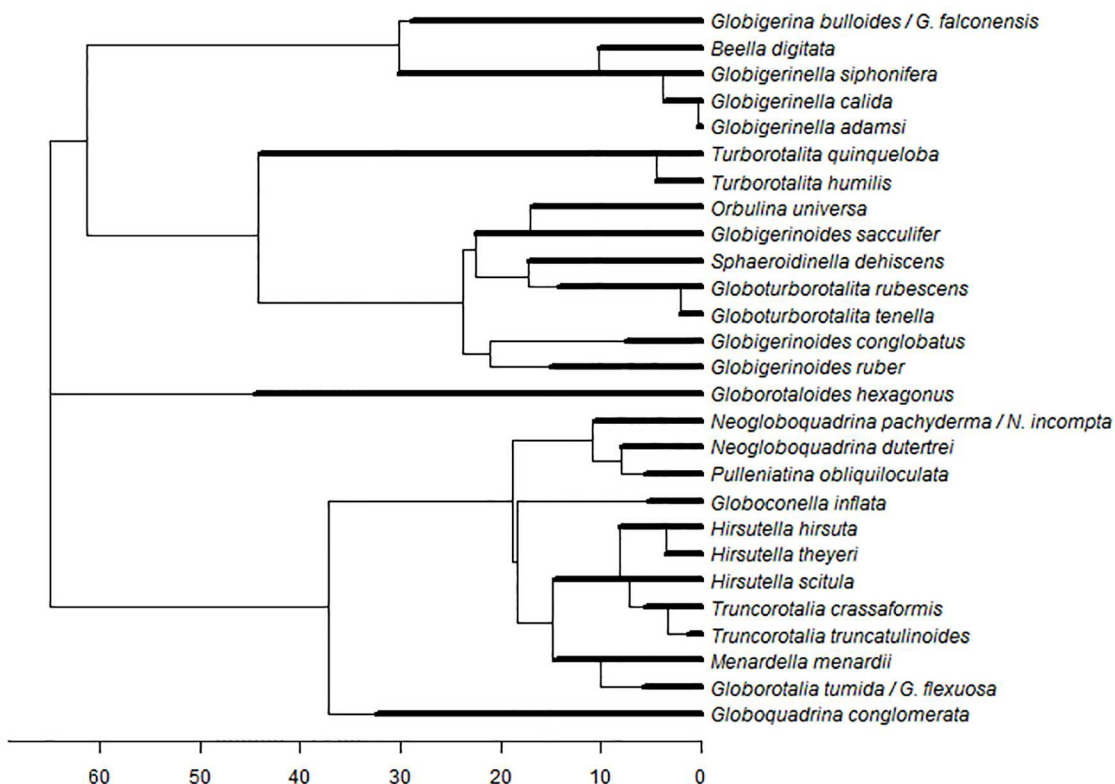
## Planktonic foraminifera as a model system

Planktonic foraminifera are unicellular zooplankton, with a test or ‘shell’ made of calcium carbonate [14]. Upon death, these tests accumulate on the sea floor and are buried as a biogenic component of marine sediments, building up a continuous record of foraminiferal assemblages through geological time. Wide sampling of these sediments, both in the Recent (coretops) and through deep time (by the International Ocean Discovery Program and its predecessors), has produced rich data on species composition and relative abundance. Sediment samples are inevitably time-averaged, on the order of hundreds to a few thousand years [15]. Time-averaging limits temporal resolution but has the dual benefits of averaging away short-term (e.g. seasonal) fluctuations and de-emphasising recent human impacts, which can otherwise confound macroecological studies (e.g. [16]). A meta-analysis comparing life and death assemblages in shallow marine environments found that rank abundance is preserved [16], though species with shorter generations are likely to be disproportionately abundant in the sediment.

Species-level identification of planktonic foraminifera, whether extant or extinct, is based on test morphology, making modern and fossil data directly comparable. This study focuses on the macroperforate clade, whose tests are less susceptible to dissolution than those of microperforate species [14] and are easier to identify to morphospecies from the size fraction of the samples in this analysis. Thirty evolutionarily distinct extant macroperforate species can be identified from test morphology [9], although many of them harbour distinct genotypes that might be biological species [17]. These genetic lineages are mostly geographically separated [18], so will influence alpha diversity estimates much less than global diversity. Aze et al. [9] published a complete phylogeny of the clade for the Cenozoic (last 66 Ma) tracing fossil relationships based solely on morphology.

## Facets of diversity

The most widely-used and easily interpreted measure of assemblage-level diversity is species richness. However, no single number can adequately reflect all facets of assemblage diversity [19], so we consider three additional measures: evenness, functional diversity and mean evolutionary age. Evenness quantifies the relative abundance of species, showing how the available resources are apportioned [20]. Functional diversity reflects the value and range of functional traits of the organisms present in a given ecosystem [21]. Mean evolutionary age (MEA) is the (abundance-weighted) average age of the species lineages present in an assemblage. The



**Fig 1. Lineage phylogeny of the macroperforate planktonic foraminifera based on Aze et al. [9].** This phylogeny contains all the lineages present in this study scaled by age. The axis shows the node age in million years (Ma). The thicker lines represent the lineage ages. The lineage ages do not always map directly onto the phylogeny. The phylogeny plots each speciation event as the origination of two new species; however some lineages persist through speciation events, so some of the age lines extend beyond the node. Some ages are also shorter than the branch; this is the result of speciation events that produced species that are now extinct. Some morphological species are part of the same evolutionary lineage.

doi:10.1371/journal.pone.0165522.g001

exceptional fossil record of this clade [9] means ages can be estimated much more meaningfully than is possible from molecular phylogenies, where the usual measure—terminal branch length—is influenced by the longevity of other species and does not consider persistence of a lineage through speciation [22]. Species' ages could be taken to be the first occurrence of the Recent morphospecies. However, because many morphospecies apparently arise from pseudospeciation events, i.e. through anagenetic rather than cladogenetic changes [9, 23], we instead use the ages of evolutionary species (from [9]) in our estimation of MEA (Fig 1). A younger MEA implies that the species in that assemblage have arisen more recently, whereas an older age implies the species have persisted for longer. Note that a community's MEA does not imply that it has existed for that length of time, or that any speciation occurred *in situ*.

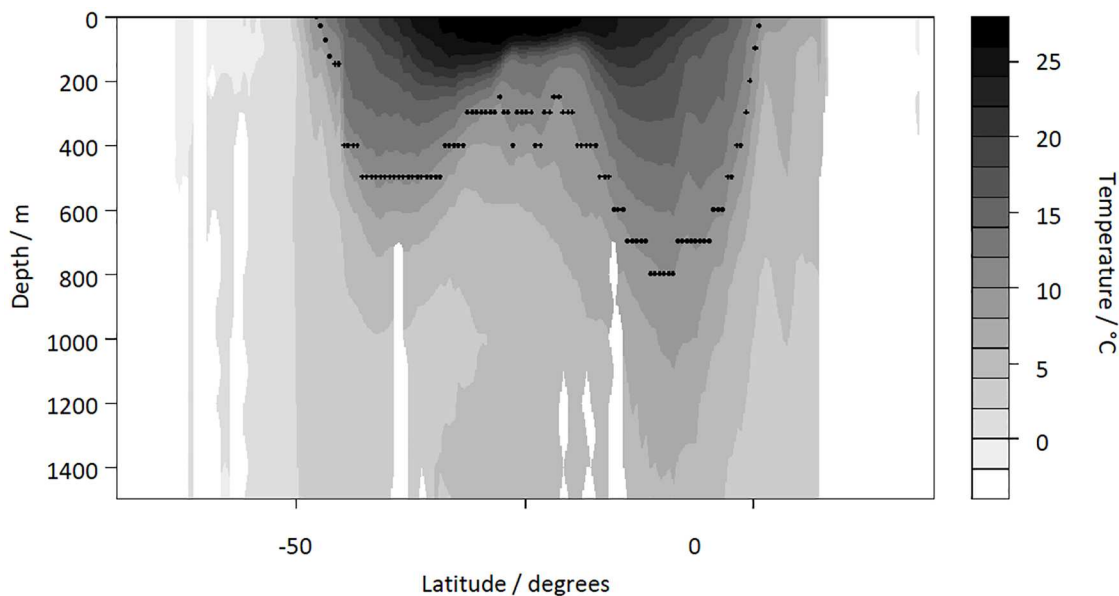
## Diversity in planktonic foraminifera

Previous diversity analyses in this group have only considered species richness (SR), limiting their ability to discriminate among competing hypotheses, many of which also make predictions about other aspects of diversity. Most previous analyses also focussed on the Atlantic, whose oceanography produces strong correlations among environmental variables, hampering efforts to statistically separate their effects. These correlations are weaker in the Indian and Pacific Oceans [24].

Rutherford et al. [10] reported that coretop planktonic foraminifera species richness peaks at latitudes around  $\pm 20^\circ$ , and that a single measure of present-day environment—sea surface temperature (SST)—explains 90% of the variation in richness in the Atlantic. They suggested SST influences diversity by controlling the vertical partitioning of the water column, with warmer surface water providing more distinct niches, but did not test this idea. Brayard et al. [11] explained the shape of the Atlantic planktonic foraminiferal latitudinal diversity gradient (LDG) as a mid-domain effect (MDE: [25]) acting on the latitudinal gradient in SST (for an explanation of the MDE see the section below). More recent simulations used pseudospecies with given temperature tolerances to investigate how an MDE could interact with the SST [26]. Morey et al. [13] correlated a range of environmental variables with the observed planktonic foraminiferal community composition. Their analysis tested foraminiferal assemblages as proxies for past environmental conditions, and did not consider theoretical explanations for these correlations. Tittensor et al. [12] considered drivers of species richness in a range of marine taxa including the planktonic foraminifera. They identified SST as the main driver of diversity, with oxygen stress also being important.

Here we use site-level data on species richness, species evenness, mean evolutionary age and functional diversity to test the hypotheses suggested in previous planktonic foraminiferal richness studies [10–13, 26–29]. These hypotheses can be split into four broad categories (e.g. [30]) in an attempt to understand the mechanisms driving the observed correlations:

1. **Ecological limits.** The observed diversity in each site could result from having reached a fundamental ecological limit [12]. The vertical structure of communities and any seasonal variation in these are collapsed in each site, so variation in diversity could be driven by superposition of multiple assemblages (a/b). Alternatively it could result from higher diversity within given communities (c-e).
  - a. **Vertical temperature structure.** Rutherford et al. [10] found the most significant correlate of richness was temperature, which they linked to the creation of vertical niches. The shape of the temperature gradient (Fig 2) determines the potential for the water column to support multiple vertically-stacked communities [31]. Sites with a greater vertical temperature gradient can have multiple communities superposed, permitting higher richness and higher functional diversity. This superposition would also increase evenness, other things being equal [32].
  - b. **Seasonal assemblages.** Seasonally-varying environmental conditions (e.g. temperature, salinity; see below for discussion of productivity) present challenges to non-motile species to which there are two responses: either different communities occupy the same ocean region in different seasons [13, 33], or communities are dominated by eurytopic species. Seasonal communities yield the same predictions as vertical temperature structure (i.e. higher richness and functional diversity, and more even assemblages). Eurytopic species have broad environmental tolerances; if they dominate, communities should have low richness and evenness, and be less functionally diverse [34].
  - c. **Sea Surface Temperature.** If the richness-temperature association results from an MDE acting on the SST gradient [11, 26], then highest richness is expected at mid temperatures, while functional diversity and evenness are not expected to show any richness-independent variation. Brayard et al.'s [11] model fits best if the clade originated in mid to low latitudes (see hypothesis 2b, Out of the Tropics, below).
  - d. **Productivity** has been identified as important in many studies (e.g. [35]). Typically, highly productivity regions would have higher population densities, and therefore higher



**Fig 2. Vertical thermal structure of the ocean.** A section through the Atlantic (at 33.5° longitude) showing how the thermal structure changes with latitude, measured in °C. The points highlight the 10°C depth contour.

doi:10.1371/journal.pone.0165522.g002

richness and functional diversity. Also, Hoffmann and Hercus [36] suggested productivity increases diversification, which should give a younger MEA. However, high ocean productivity mostly results from seasonal upwelling of nutrient-rich water [24], creating large annual fluctuations. **Seasonality of production** acts in the same way as seasonal assemblages (1b), either increasing or decreasing diversity.

- e. **Stress.** Species living outside their optimum conditions will experience stress. For some environmental conditions, e.g. temperature, stress levels will depend on species-specific adaptations. Macroperforate planktonic foraminifera are mostly intolerant of low **oxygen** levels and very high or low **salinity** [12, 17], so we use these variables as indicators of environmental stress. Regions of high stress are predicted to have lower richness and functional diversity. Evenness would be low if a small number of species dominates. Stress has also been linked to increased diversification [36], suggesting younger MEA.
2. **Evolutionary dynamics.** These hypotheses suggest the system is not currently at equilibrium, with diversity patterns reflecting variation in immigration, extinction and speciation.
  - a. **Stability in deep time** predicts geologically older environments harbour more diversity as their communities have had longer to assemble [6], a relationship observed in terrestrial and coastal systems (tropical niche conservatism: [6, 37]). As planktonic foraminifera are able to disperse rapidly [38, 39] this hypothesis would only hold if species are less able to establish in new environments (i.e. phylogenetic niche conservatism). This scenario is consistent with the diversity-dependent dynamics seen within planktonic foraminifera [40, 41] and predicts lower richness and younger MEA in younger environments.
  - b. **The Out-of-the-tropics model** suggests that taxa preferentially originate in the tropics before expanding their ranges outwards [42]. Many other studies have identified higher tropical speciation rates as important [27, 28]. This hypothesis predicts higher richness and younger MEA in the tropics, as younger species have not had sufficient time to expand to higher latitudes [43].



- c. The **metabolic theory of ecology** (MTE) links higher temperature to higher speciation rates. This model aims to explain many ecological phenomena using simple principles [44, 45]. It predicts the temperature-dependence of richness has a slope of -0.65 when log (richness) is regressed on  $1/kT$ , where  $k$  is the Boltzmann constant ( $eV K^{-1}$ ) and  $T$  is the SST (K) [46]. Marine bacteria show this expected relationship [47].
3. **Statistical.** The Mid Domain Effect (MDE) arises if species are randomly placed in space in which case, statistically, species are more likely to be placed in the centre of a domain than at the edges [25]. Diversity is therefore predicted to peak towards the centre of ocean basins, in both latitude and longitude. If the domain consists of one hemisphere then a richness gradient with a peak in temperate latitudes is expected [48]. This hypothesis predicts that the patterns of richness will be basically identical across the Atlantic and Pacific oceans but differ in the Indian, as the latter does not extend far into the northern hemisphere.
4. **Dissolution** of calcite increases with depth in the water-column. Susceptibility to dissolution after death varies among planktonic foraminiferal species [49], with significant dissolution biasing the recorded core top diversity to lower values [49].

Environmental variables were chosen to reflect these hypotheses, and incorporated into global spatial analyses of multiple diversity measures.

## Methods

### Materials

**Planktonic foraminiferal data.** The MARGO database [50] contains species abundance data from the 150 $\mu$ m size fraction of 3773 sediment coretops across the world's oceans. Each record has counts of intact specimens of all planktonic foraminiferal morphospecies, as well as the coordinates of the sample site. Roughly 300–500 intact specimens were counted at each site (min: 275, median: 419, max: 2664 in this dataset). Although previous studies have shown that using the 150 $\mu$ m size fraction tends to slightly underestimate polar and equatorial richness [31], data for the more optimal sieve-size of 125 $\mu$ m are much more limited. The underestimation is reduced by our focus on macroperforate species, rather than on the (typically smaller) microperforates. For a full list of the species used in this analysis see S1 Table. Sites where *Globorotalia menardii* and *G. tumida* have been merged were excluded from the analysis, as were sites where *Truncorotalia crassula*, an extinct species, has been recorded. *Globigerinoides ruber* has not been split into pink and white forms to avoid a paraphyletic lineage, as the MARGO database does not separate *G. elongatus* from *G. ruber* (white) [51]. Lineage ages were obtained from the phylogeny of Aze et al. [9], where some morphological species have been grouped into evolutionary lineages. Although some aspects of this taxonomy may not be ideally resolved, we considered it more important to use a methodologically uniform and internally consistent data source.

We used specimen-based rarefaction [52, 53] to produce sample-size-independent estimates of site-level species richness (SR). Hurlbert's [52] formula was used to calculate rarefaction estimates based on 275 individuals; approximately 200 sites with fewer individuals were excluded from the analysis. The 285 sites with no count of the total individuals were excluded only from the dataset used for the richness model. The species evenness measure we used divides Simpson's diversity by the observed richness [54], so is independent of richness [55]. Higher values indicate more equal abundances among species. As evenness measures are unbiased by sample size, rarefaction is unnecessary. As mentioned above, the MEA was calculated as the

**Table 1. A summary of the traits used to calculate functional richness.**

Trait	Description	Source
Spinose	Presence or absence of spines on the test	Aze et al. [9]
Structure	Grouping based on the test wall ultrastructure (Cancellate, coarsely cancellate, irregularly cancellate, cancellate with smooth cortex, hispid, smooth)	Aze et al. [9]
Dissolution	Susceptibility of the test to dissolution—another characteristic of shell structure	Berger [49]
Area	The square-root of test area taken from photographs	Veal [57]
Morphogroup	Classification based on distinctive test morphology (Spinose: flat, globular, globular with supplementary apertures, spherical, clavate, planispiral. Non-spinose: globular, globorotaliform keeled, globorotaliform anguloconical.)	Aze et al. [9]
Ecogroup	Classification based on ecological characteristics derived from isotopic data (open ocean mixed-layer tropical/subtropical with symbionts, open ocean mixed-layer tropical/subtropical without symbionts, open ocean thermocline, open ocean sub-thermocline, high latitude)	Aze et al. [9]
Symbionts	Presence or absence of symbionts	Bé et al. [58]; Hemleben et al. [14]; Sen Gupta [59]; Feldman [60]; Kučera [17]; Coxall et al. [61]; Kasemann et al. [62]; Birch et al. [63]; Kučera et al. [64]; Ezard et al. [65]
Depth	Depth habitat which the species occupies (surface, surface-subsurface, subsurface, subsurface-deep, deep)	Bé et al. [58]; Hemleben et al. [14]; Sen Gupta [59]; Feldmann [60]; Kučera [17]; Coxall et al. [61]; Kasemann et al. [62]; Birch et al. [63]; Kučera et al. [64]; Ezard et al. [65]

doi:10.1371/journal.pone.0165522.t001

abundance-weighted mean age of species at a site. To estimate functional diversity we use Villéger et al.'s [56] measure, FRic, which calculates the amount of functional trait space occupied by the assemblage. The traits used relate to both morphological and ecological characteristics of the species (see Table 1).

**Environmental data.** Site-specific values of environmental variables were obtained from the sources listed in Table 2. The mixed-layer depth (i.e. the depth to which turbulence mixes the water effectively, and within which the temperature gradient is minimal) and the depth of the 10°C isotherm (Fig 2) were used to capture the vertical temperature structure. The mean annual Brunt-Väisälä frequency has been suggested as an alternative measure of vertical structure, which focusses more on the strength of the thermal gradient rather than the thickness of the mixed layer [66]. This metric was calculated for the top 300m of the water column from World Ocean Atlas Data [67, 68] using the Ocean Data View software [69]. However it was found to be strongly correlated with the sea-surface temperature (results not shown), so was not included in the analysis. Salinity levels in the ocean vary between 31 and 38 PSU [68]. The mean optimum salinity for planktonic foraminifera is estimated as 35.1 PSU [33], based on 20 macroperforate species. As the detrimental impact of salinity is expected to increase away from this optimum we use the absolute difference of the salinity at a site from this optimum to quantify salinity stress. Productivity was the only variable that was strongly skewed; we therefore log-transformed that variable to reduce the influence of high values.

Dissolution of carbonate occurs in water that is undersaturated in carbonate ions. We therefore use  $\Delta\text{CO}_3^{2-}$ , a relative measure of carbonate saturation state at the sea floor [71], to quantify the risk of dissolution. If  $\Delta\text{CO}_3^{2-} > 0$ , the ocean floor is saturated with respect to carbonate and there is no risk of dissolution; we therefore set all positive values to zero before modelling. We excluded all sites with  $\Delta\text{CO}_3^{2-} < -10.9$ , the average value at the depth cut-offs used in previous studies to avoid dissolution bias (e.g. [12] excluded sites below 3500m in the Atlantic and below 4500m in the Pacific/Indian). Within the range 0 to -10.9,  $\Delta\text{CO}_3^{2-}$  therefore quantifies



**Table 2. The environmental variables included in this analysis.** Maps showing the variation in these variables are included in the supporting information (S1 File), along with information on the mean and range of the values across the sites. All variables are measured at 1 degree resolution; higher resolutions are available for some variables, but the data was too sparse to make it worthwhile including them.

Category	Variable	Description	Resolution	Source
Sea surface temperature	Mean SST	The annual mean sea-surface temperature	1 degree	World Ocean Atlas 09 [67]
Vertical temperature structure	Mixed-layer depth	The annual average depth to the base of the mixed layer, defined as a temperature change of 0.2°C from the surface temperature [70]	2 degree	IFREMER/LOS Mixed Layer Depth Climatology website ( <a href="http://www.ifremer.fr/cerweb/deboyer/mld">www.ifremer.fr/cerweb/deboyer/mld</a> )
	10°C depth	The annual average depth to the 10°C isotherm (see Fig 2)	1 degree	Calculated from World Ocean Atlas 09 [67]
Seasonal assemblages	SD SST	The standard deviation in monthly sea-surface temperature	1 degree	World Ocean Atlas 09 [67]
	SD Salinity	The standard deviation in monthly salinity	1 degree	World Ocean Atlas 09 [68]
Productivity	Mean log Productivity	The annual mean of the logged net primary productivity [71]	1/6 degree, averaged to 1 degree	Ocean productivity ( <a href="http://www.science.oregonstate.edu/ocean.productivity/index.php">http://www.science.oregonstate.edu/ocean.productivity/index.php</a> )
Stress	Mean Salinity	The annual mean salinity	1 degree	World Ocean Atlas 09 [68]
	Oxygen stress	The proportion of the year that a given location is at <2ml, measured at 100m depth	1 degree	World Ocean Atlas 09 [72]
Other	Ocean	The ocean in which the site is located	-	Kučera et al. [50]
	Dissolution	The bottom-water delta carbonate ion value, calculated using a spherical kriging model with the known relationship between $\Delta\text{CO}_3^{2-}$ and water depth	1 degree	Archer [71]

doi:10.1371/journal.pone.0165522.t002

the undersaturation of carbonate. Alternative  $\Delta\text{CO}_3^{2-}$  values of -5 and -15 were tested, to determine the impact of this cut-off. The choice of value had relatively little impact (S1 Fig), although dissolution was a slightly more significant predictor of richness and lineage age when a more negative cut-off value was used.

The collinearity of variables was tested using the variance inflation factor (VIF). This metric regresses two variables against each other to identify collinearity. Where collinearity was detected ( $\text{VIF} > 5$ : [73]) the subordinate variable (that which explained less variance) was removed. Productivity and seasonality of production were highly collinear, meaning their importance cannot be separated. Sea-surface temperature was collinear with mean dissolved oxygen. For this reason, Tittensor et al. [12] instead measured oxygen stress in each of their 880km grid cells as the proportion of the cell with < 2ml per litre  $\text{O}_2$ , a cut-off often taken to mark a significant impact on ocean life [74]. As our study's spatial resolution is 1 degree, the same as the oxygen data, this exact measure would be binary; instead, we therefore measured oxygen stress as the proportion of the year spent below the 2ml per litre  $\text{O}_2$  threshold. No strong correlations were found between other variables for the full model.

In the few cases where environmental data were unavailable for a given grid cell (roughly 50 sites) the value for that variable was recorded as the mean of the values in the 8 surrounding cells. Sites where the surrounding cells were also missing data were excluded from the dataset. The dissolution measure is not available for the Mediterranean, which was therefore excluded from the analysis.

The environmental variables have a 1 degree resolution with the exception of mixed-layer depth, which is only available at 2 degree resolution. We therefore averaged the response data to the same 1 degree resolution as multiple points with the same explanatory variables would qualify as pseudoreplication, and increase the significance of the variables [75]. To test the impact of averaging, models were re-run 100 times, each time randomly sampling one site from each cell.

## Statistical methods

Bjørnstad and Falck's [76] bootstrapping method showed significant spatial autocorrelation in the residuals of ordinary least-squares models (results not shown), as expected in global analyses [77]. This autocorrelation was not adequately removed by generalised additive models with smooth terms for latitude and longitude [78], even with a high basis dimension for the smooth terms (results not shown), so we used simultaneous autoregressive models (SARs: [79, 80]). These are standard linear models with an added weights matrix to account for the spatial autocorrelation, which depends on the neighbourhood distances (distance over which the spatial autocorrelation acts) and the coding method (weighting given to neighbours). There are several types of SAR; Kissling and Carl [79] report that SAR<sub>error</sub>, which assumes the autoregressive process is in the error term, is the best method for ecological data such as ours.

We fitted a complete SAR<sub>error</sub> model for all explanatory variables (see Table 2) and their two-way interactions for each of the response variables (SR, evenness, MEA and functional richness) globally. Dissolution was excluded from the interaction term, as the relationship between dissolution and diversity should be the same irrespective of the other environmental conditions. We selected the coding method (following [79]) and the optimal neighbourhood distance (between 500km and the distance where autocorrelation becomes non-significant, following [81]) using Akaike Information Criterion (AIC) comparisons for each model (see the results for full details of the parameters used).

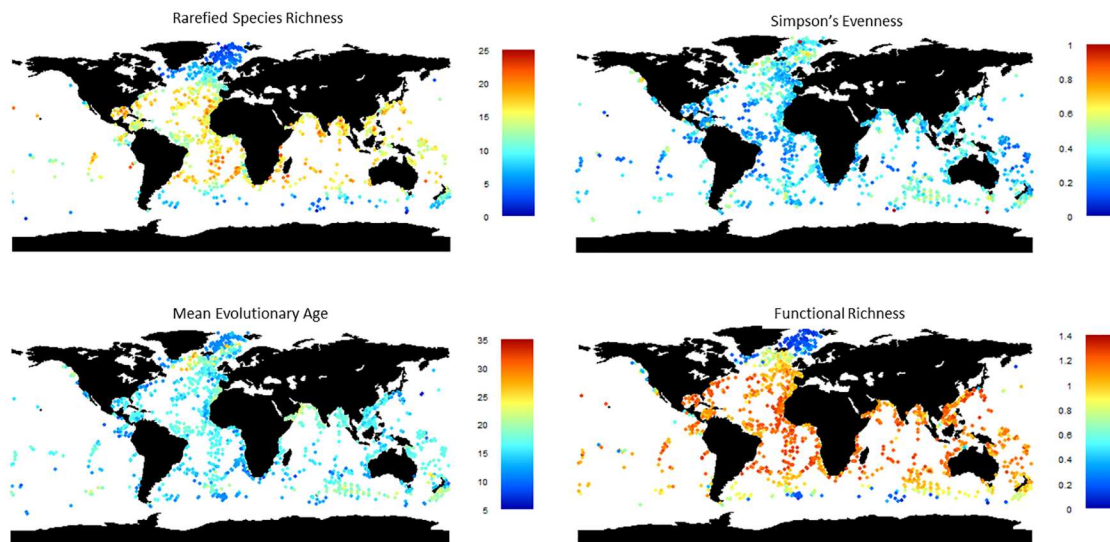
To investigate the richness relationship in more detail, we further modelled each ocean separately. The full global model was too parameter-rich (seventy-five parameters) to fit robustly within each separate ocean. Stepwise model simplification of the full SR model, with a threshold p-value of 0.05 [82], was used to remove non-significant terms. Ocean terms were also removed. For each ocean, to ensure important interactions had not been missed, each interaction term was added back in turn with any significant terms retained in the model. Collinearity in the explanatory variables was tested for at each stage (S2 Fig shows log likelihood ratios for the full and simplified models). To compare the impact of more complete sampling, the Atlantic and Pacific were randomly subsampled, 100 times, to contain the same number of sites as the Indian Ocean.

As  $R^2$  is not calculated by SAR, Pseudo- $R^2$ , the squared Pearson correlation between the predicted and the observed values [79] was calculated using Nagelkerke's [83] formula to measure model fit. The root mean squared error (RMSE), the average absolute departure of points from the fitted values, was also fitted.

Log-likelihood ratio tests were used to determine the contribution of each variable. Where subsampling had been used (i.e. for averaged sites in the main models, and to equalise sample sizes in the ocean models), variation in the estimates of the likelihood ratios was calculated for each variable (expressed on the subsequent plots as standard deviation).

Global diversity in the absence of dissolution ( $\Delta\text{CO}_3^{2-} = 0$ ) was predicted using the final model coefficients applied to global layers of the environmental variables (see S1 File). Predictions were only made within the sampled ranges of the other environmental variables. Interpretation based on coefficients is challenging due to the interactions between the variables. Therefore, to investigate the shape of the relationships, each variable in turn was excluded from the models. The relative impact of its exclusion on model predictions was then investigated. Graphs showing how the diversity metric responded across the range of that variable were plotted.

Lastly, the MTE predictions for the relationship of SR and SST were tested by fitting a spatial autoregressive model with only SST (as a third-order polynomial) and ocean identity as explanatory variables, and with the same neighbourhood size and coding method as the global SR model.



**Fig 3. Diversity maps with the four different measures, showing the global spread of the data.**

doi:10.1371/journal.pone.0165522.g003

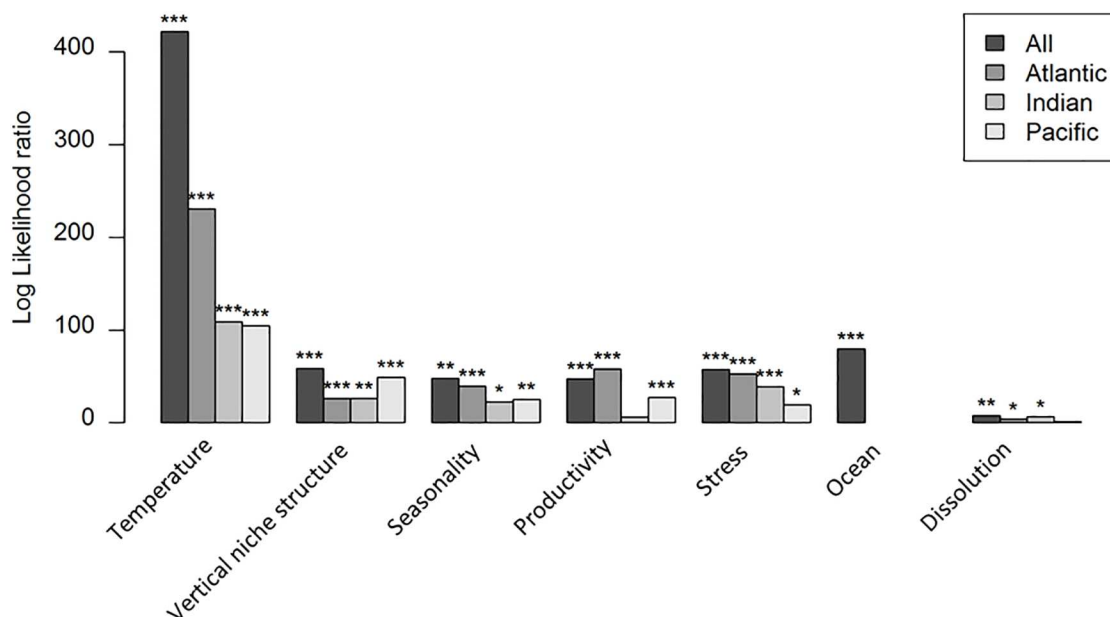
All analyses were done in the statistical environment R v. 3.0.3 [84]. Kriging was performed using the 'gstat' library [85]. SAR<sub>error</sub> models were produced using the 'spdep' package [86].

## Results

Fig 3 shows the observed diversity. SR peaks at 20° latitude, with a slight drop at the equator (as observed by [10]) and a steeper drop towards the poles. All three oceans are similar, although the limited data in the eastern Pacific makes it challenging to ascertain if there is an equatorial dip in SR in that region. Evenness is lower in tropical than in temperate or polar regions. MEA is lowest in polar regions and the Atlantic upwelling zones, and highest in sub-polar regions and the Indian upwelling zone. Functional richness has low polar and high tropical values, with a gradient much steeper than for SR and without an equatorial dip. With low SR, as in the high Atlantic sites, evolutionary age is heavily influenced by whether the dominant species is old (e.g. *Turborotalita quinqueloba*) or young (e.g. *Neogloboquadrina pachyderma*) (see Fig 1).

The full SAR<sub>error</sub> model of SR had a pseudo- $R^2$  of 0.89 and an RMSE of 1.74 species. The full model had an AIC of 4253 (for coefficients see S2 File), indicating a significantly better fit than the corresponding ordinary least squares model (AIC = 4313). This SAR<sub>error</sub> model used row-standardised weighting and a neighbourhood distance of 507 km. For SR, temperature is the most important variable, followed by ocean, stress and vertical niche structure (Fig 4). The simplified model of SR (pseudo- $R^2$  = 0.89, RMSE = 1.77, AIC = 4216), ascribes similar importance to the variable groups (Fig 4); differences probably result from the step-wise simplification. For these separate ocean models, explanatory power ranges from 92% (Atlantic) to 77% (Pacific). Temperature is highly significant for SR in all three oceans, especially the Atlantic (Fig 4). Productivity is the most different in effect between oceans: it is unimportant in the Indian but the second most important variable in the Atlantic. Caution is needed when interpreting these results as the number of data points widely varies between oceans. When sample size is standardised (S3 Fig), the variables become much less explanatory in the Atlantic, although the relative contributions of each variable remain similar for all three oceans.

The SAR<sub>error</sub> models for the other variables were less explanatory (pseudo- $R^2$  = 0.46 for evenness, 0.54 for average age, 0.85 for functional richness; RMSE = 0.096 for evenness, 2.35



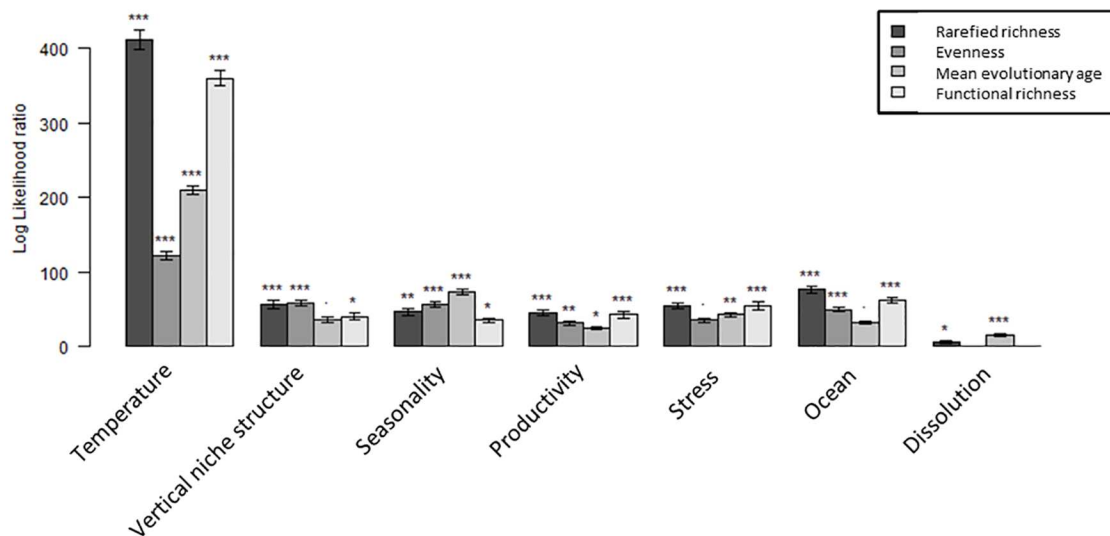
**Fig 4. Log likelihood ratios for the species richness  $SAR_{error}$  model in each ocean.** A comparison of the explanatory power of the groups of variables globally and in each ocean for the species richness model. Stars indicate the significance of excluding that variable group (\*\*\* < 0.001, 0.001 < \*\* < 0.01, 0.01 < \* < 0.05, 0.05 < . < 0.1). If relationships had the same functional form within each ocean, the total height of the bars for the three oceans would equal that of the global bar. The Atlantic model, with 670 data points, had a pseudo- $R^2$  of 0.92, an RMSE of 1.59 and an AIC of 2510. The Indian model, with 155 data points, had a pseudo- $R^2$  of 0.91, an RMSE of 1.38 and an AIC of 608. The Pacific model, with 235 data points, had a pseudo- $R^2$  of 0.77 an RMSE of 1.82 and an AIC of 1024. All models used row-standardised weighting and a neighbourhood distance of 507km.

doi:10.1371/journal.pone.0165522.g004

million years for average age, 0.15 for functional richness). The relative importance of the variables in these models is shown in Fig 5. Functional richness has a model similar to that for SR although temperature is less important and dissolution is not significant; vertical niche structure is also less significant. Lineage age is mainly driven by temperature and seasonality, with no difference among oceans. Most variables are important for evenness, with temperature only slightly more important than the others, but stress and dissolution contribute little. The model residuals show no clear spatial patterns (S4 Fig).

S5 Fig shows the marginal effects of the different explanatory variables. Higher SR is associated with higher temperatures and moderate mixed-layer depths, particularly in the Indian Ocean. Interestingly the humped relationship of temperature with marginal SR found in the Atlantic is less clear in the other oceans. More seasonal waters have lower marginal SR. Temperature's relationship with evenness is quite variable between the oceans. Higher values of salinity stress (i.e. further from the optimum) lead to more even assemblages in the Atlantic and Pacific, as do more productive and more seasonal environments. MEA is closely tied to SST, with the youngest ages at the lowest temperatures, followed by a peak of older communities at about 10°C and then a slight drop in evolutionary age. Age tends to increase with mixed-layer depth and increased variability. Functional richness shows much the same relationships as species richness, with the exception that increased seasonality is linked to higher functional richness but lower species richness. The relationship with salinity is also more clearly defined, with lower salinity stress being associated with the most functionally diverse communities.

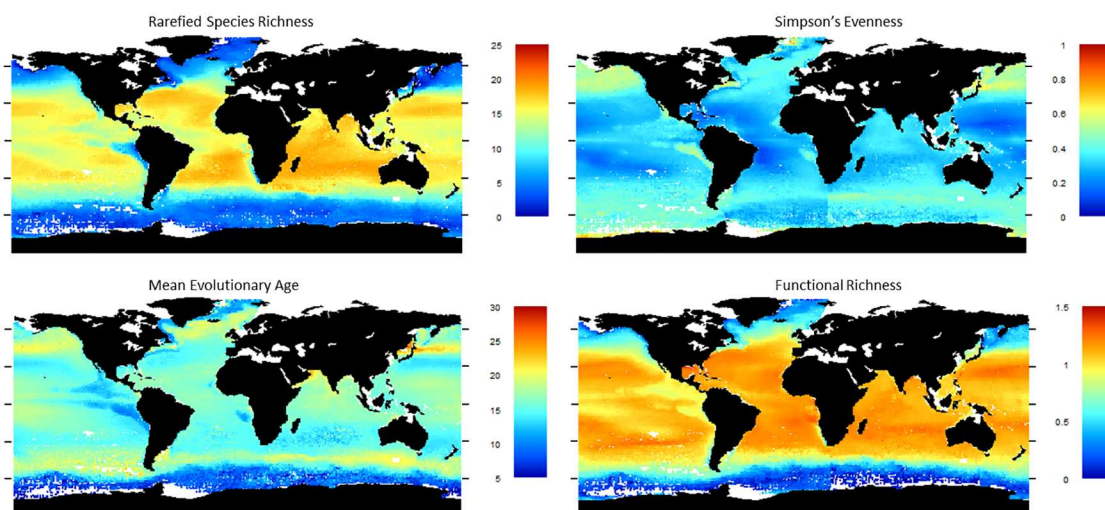
Strong latitudinal patterns are seen in the fitted values of all the diversity measures (Fig 6). Longitudinal patterns also occur, such as in the eastern and the western Atlantic and either



**Fig 5. Log likelihood ratios for the SAR<sub>error</sub> models of each diversity measure.** The log likelihood ratios show the relative explanatory power of the groups of explanatory variables. This ratio is plotted for each variable group across the models of the four response variables. Error bars show 1sd and represent the variation associated with removing the replication within each 1 degree square.

doi:10.1371/journal.pone.0165522.g005

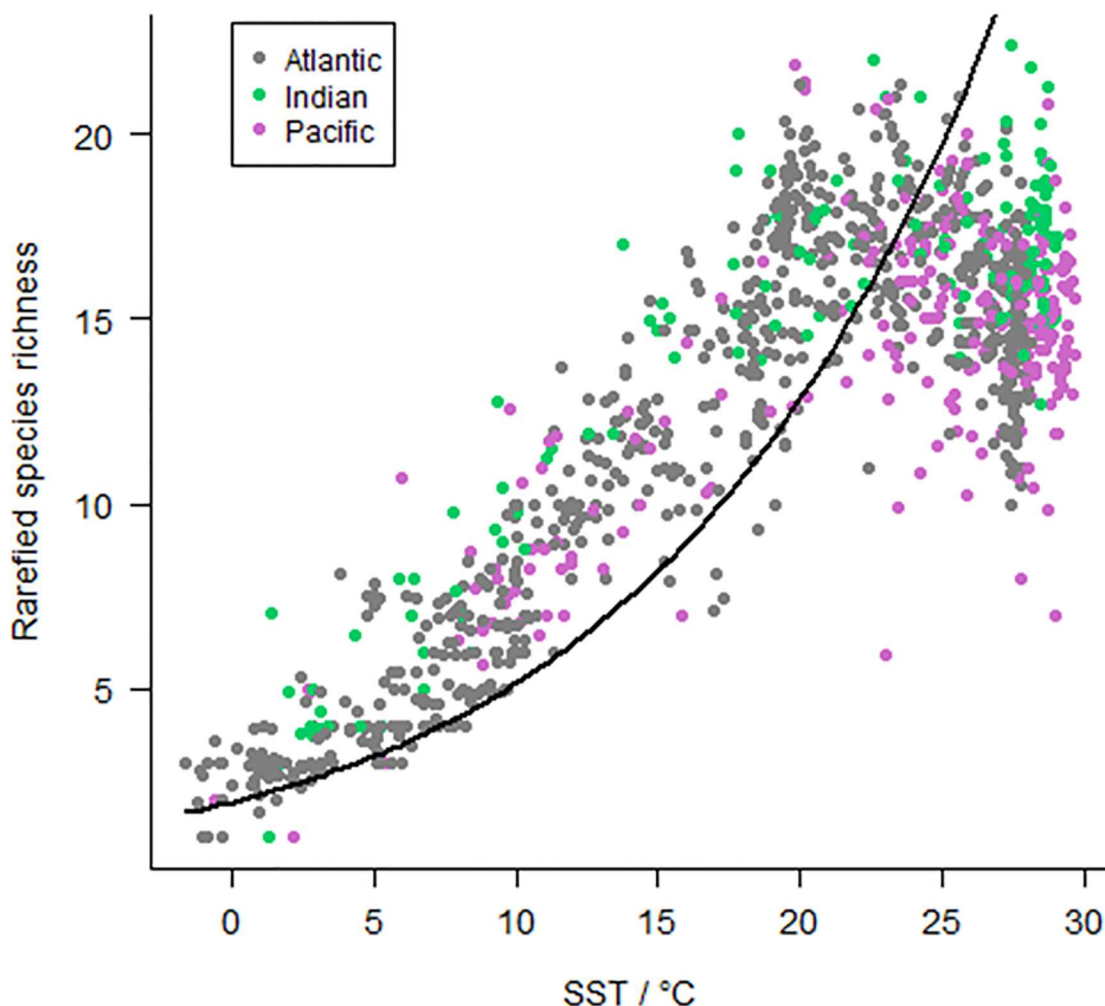
side of India. The more species rich assemblages in temperate regions are younger, while equatorial and sub-polar species-poor assemblages are typically older. Upwelling regions are modelled as having lower SR and functional diversity, as well as slightly younger assemblages than other sites at similar latitudes. The exception is the Indian upwelling region which has older species. The limitations of these predictions should be borne in mind. Pacific high-latitude predictions are supported by few data, as are the coastal regions, which tend to have different combinations of environmental variables from the open ocean. In models where the three oceans are considered separately, there are differences where the oceans meet; this difference is particularly noticeable for evenness.



**Fig 6. Predicted values of the diversity measures across the oceans.**

doi:10.1371/journal.pone.0165522.g006





**Fig 7. The relationship between rarefied species richness and SST (sea surface temperature) by ocean.** The line shows the relationship predicted under the metabolic theory of ecology (MTE).

doi:10.1371/journal.pone.0165522.g007

The relationship between SR and SST does not match the predictions of MTE: it varies significantly among oceans ( $p = 0.04$ ) and does not have the predicted form in any ocean or overall (Fig 7).

## Discussion

Our results show many environmental factors independently explain significant geographic variation in coretop diversity in macroperforate planktonic foraminifera. Whereas previous analyses of Atlantic sites [10] found only sea surface temperature (SST) to be significant in multiple regression models, the structure of the Atlantic—with the high correlations among environmental variables—may have hampered a fuller exploration of the controls on diversity. When correlations between other variables and SST are weakened by including other oceans and multiple facets of diversity are investigated with a larger dataset, a more complex picture emerges. We consider the merits of the four sets of explanatory hypotheses outlined in the Introduction.



## Ecological limits

Ecological limits are argued to impose a limit on the diversity that can be sustained in a site. Such a limit could be imposed in a number of ways. If the oceanic niches are largely divided by depth, and each niche can only hold a limited number of species, more vertically-structured waters should have higher SR, functional richness and evenness. SR and functional richness do increase with vertical structure, but only up to a certain depth (S5 Fig), and evenness decreases if anything. So, either some other factor is influencing evenness, or the depth of the mixed layer is not a major driving force of the species richness patterns. However that does not completely rule out the importance of vertical temperature structure for diversity [10]. As mentioned above, our measures of vertical structure do not capture the strength of the stratification, as that is found to be strongly correlated with the SST. Given the significance of SST, these results imply stronger thermal gradients could increase diversity with niches being more strongly separated, but having a greater depth of the same conditions (i.e. a thicker mixed layer) does not increase the diversity.

Tittensor et al. [12] suggested that the off-equator peak in diversity could result from superposition of multiple assemblages due to seasonal fluctuations in ocean current boundaries. Alternatively seasonality could cause a reduction in specialist species. The highest SR sites (in the temperate regions) have relatively uneven assemblages while the equatorial sites have lower SR but also low evenness. Functional richness is equally high in both tropical and temperate regions, implying functional redundancy in warmer communities, particularly in the Indian and Pacific (Fig 6). If evenness reflects superposition of multiple assemblages [13], the relatively low evenness observed in the low to mid latitudes (Fig 6) imply seasonal turnover of diversity is not driving the diversity there. However the low richness observed in the more seasonally variable high latitudes is linked to more even assemblages, implying the communities that dominate these sites could vary through the year. Results from Žarić et al. [87], who studied seasonal variation in foraminiferal communities, provide some support for this theory, although species in mid-latitude communities mostly vary in abundance rather than disappearing entirely.

The other very seasonal sites are the highly productive coastal upwelling regions, which have low SR and evenness. This result suggests the superposition of seasonal communities does not dominate coastal upwelling assemblage composition (c.f. [32]); instead, such sites are likely to be dominated by generalists. This theory is supported by the high abundance of opportunistic species such as *Globigerina bulloides* in upwelling regions [88]. The Pacific and Atlantic upwelling assemblages are typically dominated by one of the two major groups within the clade, the omnivorous non-spinose globorotaliids. However the Indian upwelling contains a more equal mixture of spinose and non-spinose species (highlighted by the difference in MEA).

Neither oxygen stress nor salinity cause much change in SR across the range of values seen in our data, but there is a tendency towards more even communities at higher stress levels. There is a decrease in functional richness with both salinity and oxygen stress, suggesting certain functional groups are less able to cope with more extreme conditions. Planktonic foraminifera can tolerate the variations in salinity experienced in the oceans [89], but the more extreme conditions found in some ocean regions could slightly reduce survivorship or fecundity. Planktonic foraminifera may be particularly susceptible to slight reductions in fitness because, from what is known about their life history, Allee effects (a positive relationship between individual fitness and the density of conspecifics: [90]) could be very strong. It appears that species are semelparous, obligately sexual mass spawners, meaning that falls in local population size could greatly reduce reproductive success. Alternatively variations in salinity could

be associated with other, unmodelled, environmental variables [24]. The interplay of these different conditions could make stress relationships harder to interpret.

Although SST is the most significant explanatory variable, it is measured more precisely than some of the others, which could elevate its relative importance over correlated variables in a multiple regression [91]. Thus, the inferred importance of the other explanatory variables may be underestimated.

## Evolutionary dynamics

The deep-time stability hypothesis receives support from the peaks in species richness within the subtropical gyres, perhaps the most stable environment on earth [92]. However, even though a global analysis of this clade's macroevolution showed that environmental change has promoted extinction and high standing diversity has inhibited speciation [40], these gyre assemblages are not dominated by particularly old species. Environmental stability has not led to evolutionary stasis [93].

The youngest assemblages are those at very high latitudes dominated by *Neoglobobulimina pachyderma*; combined with their very low richness, these assemblages support the deep-time stability hypothesis. The oldest assemblages are in subpolar waters, which is where some of the older species reach their highest relative abundance (e.g. *Turborotalita quinqueloba*, *Globigerina bulloides*). This combination of moderately low richness, low functional diversity and old species does not fit either the deep-time stability or the out-of-the-tropics hypotheses. High mean species age implies phylogenetic overdispersion, perhaps suggesting a role for competitive interactions in structuring these subpolar assemblages [94], and perhaps also suggesting that the older species possess an incumbency advantage [95, 96] over newcomers. The four dominant morphospecies in these subpolar assemblages have speciated at much the same rate as other extant morphospecies (six speciation events in 98.7 Ma of lineage, giving a rate of 0.061/Ma, compared with an overall rate of 0.073/Ma for all Recent species), arguing against evolutionary source-sink dynamics [97] as the explanation for the region's old assemblages (although this ignores any cryptic diversity).

Although the deep-time stability model receives only qualified support from our models, it may have been important for the gradual assembly of the gyre communities without leaving a strong signature on MEA, if species are still joining the community. The out-of-the-tropics model also receives little direct support from our models. However, fully resolving the importance of these hypotheses would require a spatiotemporal analysis of diversity dynamics, identifying where each species originated and mapping patterns in species persistence. Because many species in the clade's history attained their global distribution very rapidly after formation, such resolution must await more precise dating [98].

The upwelling regions found along the eastern coasts and at the equator are highly seasonal, often highly productive, environments. Although these regions have persisted for a long time they tend to be species-poor: deep-time stability is not by itself sufficient to provide high richness. The Pacific and Atlantic upwelling regions are dominated by younger species, perhaps implying a rapid turnover with higher levels of extinction and speciation. However the Indian upwelling region contains relatively old species. This region differs from the Atlantic or Pacific as the upwelled water has a short residence time before it is dispersed, and upwelling ceases between the monsoonal periods [24]. The older community found in this environment could reflect an incumbency advantage of the species adapted to this more seasonal environment.

The metabolic theory of ecology (MTE) predicts the relationship between temperature and richness should be consistent in the three oceans; however our results show the oceans differ significantly in this relationship. There is also no evidence that speciation rates are higher at

higher temperature for morphospecies (see above). The MTE predicts an exponential relationship between SST and richness, which is not observed (Fig 6), although the superposition of multiple communities in the sediment could mask that shape. Our results suggest that MTE does not underpin diversity patterns in this clade (though it may do so in bacteria: [47]).

## Alternative explanations and limitations

The statistical MDE predicts a peak in diversity at the centre of each ocean basin. Due to the different geographical ranges of these basins, there could be differences in results between oceans that are consistent with the MDE [25]. Although the pattern in richness is dominated by a latitudinal gradient, there is also marked longitudinal variation, which differs between ocean basins (Fig 6)—variation that purely spatial MDE models struggle to replicate [11, 26]. Alternatively an MDE has also been suggested to act on a temperature gradient to produce the observed mid-temperature diversity peak [26]. However although SR decreases clearly above 23°C in the Atlantic, this decrease is much less pronounced in the other oceans (S5 Fig), making it unlikely that diversity patterns result purely from an MDE acting on the temperature. Having removed sites based on the selected cut-off, dissolution explained little of the variation among the remaining sites.

Although an excellent study system in many ways, planktonic foraminifera present a number of challenges. The rapid attainment of wide distributions by new species makes pinpointing areas of origination difficult. Working with death assemblages conflates life span with instantaneous abundance, as well as inevitably superimposing assemblages from different depths and seasons. Correlations with productivity could be driven by either its mean or its seasonality, because the two are collinear in the marine realm. Nonetheless, planktonic foraminifera offer global sampling and a unique fossil record, giving a rare opportunity to consider the global macroecology of open-ocean plankton at the species level and to include evolutionary age among the facets of diversity considered. That same fossil record also provides a unique opportunity to test how well present-day macroecological correlates transfer to past environments—an obvious avenue for future research.

## Conclusions

We have tested a wide range of environmental factors that have been hypothesised to influence local coretop assemblage diversity in macroperforate planktonic foraminifera, using four different diversity measures (rarefied richness, Simpson's evenness, functional richness and lineage age) to provide as complete an analysis as possible. Most of the ecological and evolutionary mechanisms that have been proposed to influence diversity received at least some support, but none fits all of the data. Sea-surface temperature is the strongest predictor of diversity; this metric is correlated with the strength of stratification in the water column. However the thickness of the mixed layer is not a strongly significant factor, suggesting the strength but not the depth of the water column structure contributes to diversity. Evenness suggests seasonal turnover could contribute to diversity at high latitudes, but there is little evidence for it in low to mid-latitudes. The seasonally variable upwelling regions in these latitudes show little turnover, instead relying on opportunistic species. Regions with less optimal environmental conditions tend to have lower functional diversity. The geologically stable gyres have high diversity, but the communities found there are relatively young implying there is little evolutionary stasis there. The oldest communities occur in the sub-polar regions, possibly suggesting competition, or an incumbency advantage, have contributed to their structure. The mechanisms that make the most precise predictions—MDE and MTE—are rejected as the sole explanations for the diversity patterns in this clade. Our results instead suggest that, as proposed by Gaston [99],

observed diversity patterns are best explained by multiple factors and mechanisms acting in concert, and that the environmental correlations observed today have developed over geological timescales.

## Supporting Information

**S1 Fig. Log likelihood ratios for sites with different dissolution cut-offs.** -10.9 was the cut-off used in this study.

(TIF)

**S2 Fig. Log likelihood ratios for the full SAR<sub>error</sub> model, compared to the simplified model of rarefied species richness.** The simplified version was produced to allow ocean level calculations of diversity.

(TIF)

**S3 Fig. Implications of reducing sampling to equal numbers of sites in the three oceans.**

The error bars are 1sd. For the full model, these error bars represent the variation associated with removing the replication within each 1 degree square. For the individual ocean models (Atlantic and Pacific), the error bars represent the variation associated with sampling the data-set to contain the same number of data points as the Indian. Consequently there are no error bars for the Indian.

(TIF)

**S4 Fig. Residuals from the full SAR<sub>error</sub> models for the four response variables.**

(TIF)

**S5 Fig. Marginal effect of the explanatory variables on the diversity measure.** The colours represent the three oceans: Black—Atlantic, Red—Indian, Blue—Pacific.

(TIF)

**S1 File. Maps of the explanatory variables used in the analysis.** The environmental variables used in the analysis, and their ranges in the associated data.

(PDF)

**S2 File. Values of the coefficients and the likelihood ratios from the spatial autoregressive models.** Coefficient summary for the full model of rarefied species richness. Coefficient summary for the full model of Simpson's evenness. Coefficient summary for the full model of mean evolutionary age. Coefficient summary for the full model of Functional richness. Likelihood ratios and their significance for the different diversity models.

(PDF)

**S1 Table. Species list used in the analysis.** Columns indicate the names in the MARGO dataset, the species used in this analysis and comments justifying the reasons. Coloured rows indicate definitions which were grouped.

(PDF)

## Acknowledgments

We would like to thank Michal Kučera, Brian Huber and an anonymous reviewer for their thoughtful comments; these have significantly improved the manuscript. We are very grateful to researchers in the Purvis lab and in the NERC funded "Descent into the Icehouse" project for the support they have provided during the writing of this paper.

## Author Contributions

**Conceptualization:** ISF AP.

**Data curation:** ISF.

**Formal analysis:** ISF.

**Funding acquisition:** AP TDJ PP.

**Investigation:** ISF.

**Methodology:** ISF AP.

**Project administration:** AP.

**Software:** ISF.

**Supervision:** AP TDJ PP.

**Validation:** ISF.

**Visualization:** ISF.

**Writing – original draft:** ISF AP TDJ PP.

**Writing – review & editing:** ISF AP TDJ PP.

## References

1. Kreft H, Jetz W. Global patterns and determinants of vascular plant diversity. *Proceedings of the National Academy of Sciences*. 2007; 104(14):5925–30. <http://dx.doi.org/10.1073/pnas.0608361104>.
2. Jetz W, Fine PVA. Global gradients in vertebrate diversity predicted by historical area-productivity dynamics and contemporary environment. *PLoS Biol*. 2012; 10(3):e1001292. <http://dx.doi.org/10.1371/journal.pbio.1001292>. doi: 10.1371/journal.pbio.1001292 PMID: 22479151
3. Roy K, Jablonski D, Valentine JW. Dissecting latitudinal diversity gradients: functional groups and clades of marine bivalves. *Proceedings of the Royal Society B: Biological Sciences*. 2000; 267(1440):293–9. <http://dx.doi.org/10.1098/rspb.2000.0999>. doi: 10.1098/rspb.2000.0999 PMID: 10714884
4. Orme CDL, Davies RG, Burgess M, Eigenbrod F, Pickup N, Olson VA, et al. Global hotspots of species richness are not congruent with endemism or threat. *Nature*. 2005; 436(7053):1016–9. <http://dx.doi.org/10.1038/nature03850>. doi: 10.1038/nature03850 PMID: 16107848
5. Clarke A, Crame JA. The importance of historical processes in global patterns of diversity. In: Blackburn TM, Gaston KJ, editors. *Macroecology: Concepts and Consequences*. Blackwell Publishing; 2003. p. 130–51.
6. Jablonski D, Belanger CL, Berke SK, Huang S, Krug AZ, Roy K, et al. Out of the tropics, but how? Fossils, bridge species, and thermal ranges in the dynamics of the marine latitudinal diversity gradient. *Proceedings of the National Academy of Sciences*. 2013; 110(26):10487–94. <http://dx.doi.org/10.1073/pnas.1308997110>.
7. Fritz SA, Schnitzler J, Eronen JT, Hof C, Böhning-Gaese K, Graham CH. Diversity in time and space: wanted dead and alive. *Trends in Ecology & Evolution*. 2013; 28(9):509–16. <http://dx.doi.org/10.1016/j.tree.2013.05.004>.
8. Jablonski D, Roy K, Valentine JW. Evolutionary macroecology and the fossil record. In: Blackburn TM, Gaston KJ, editors. *Macroecology: Concepts and Consequences*. Blackwell Science Ltd; 2003. p. 368–90.
9. Aze T, Ezard THG, Purvis A, Coxall HK, Stewart DRM, Wade BS, et al. A phylogeny of Cenozoic macroperforate planktonic foraminifera from fossil data. *Biol Rev*. 2011; 86(4):900–27. <http://dx.doi.org/10.1111/j.1469-185X.2011.00178.x>. doi: 10.1111/j.1469-185X.2011.00178.x PMID: 21492379
10. Rutherford S, D'Hondt S, Prell W. Environmental controls on the geographic distribution of zooplankton diversity. *Nature*. 1999; 400(6746):749–53. <http://dx.doi.org/10.1038/23449>.

11. Brayard A, Escarguel G, Bucher H. Latitudinal gradient of taxonomic richness: combined outcome of temperature and geographic mid-domains effects? *J Zool Syst Evol Res*. 2005; 43(3):178–88. <http://dx.doi.org/10.1111/j.1439-0469.2005.00311.x>.
12. Tittensor D, Mora C, Jetz W, Lotze H, Ricard D, Berghe E, et al. Global patterns and predictors of marine biodiversity across taxa. *Nature*. 2010; 466(7310):1098–101. <http://dx.doi.org/10.1038/nature09329>. doi: 10.1038/nature09329 PMID: 20668450
13. Morey AE, Mix AC, Pisias NG. Planktonic foraminiferal assemblages preserved in surface sediments correspond to multiple environment variables. *Quaternary Science Reviews*. 2005; 24(7–9):925–50. <http://dx.doi.org/10.1016/j.quascirev.2003.09.011>.
14. Hemleben C, Spindler M, Anderson OR. *Modern Planktonic Foraminifera*: Springer-Verlag; 1989. 363 p.
15. Martin RE. Taphonomy and temporal resolution of foraminiferal assemblages. In: Sen-Gupta BK, editor. *Modern Foraminifera*: Kluwer Academic Publishers; 2002. p. 281–98.
16. Kidwell SM. Time-averaging and fidelity of modern death assemblages: building a taphonomic foundation for conservation palaeobiology. *Palaeontology*. 2013; 56(3):487–522. <http://dx.doi.org/10.1111/pala.12042>.
17. Kučera M. Planktonic foraminifera as tracers of past oceanic environments. In: Hillaire-Marcel C, de Vernal A, editors. *Proxies in Late Cenozoic Paleoclimatology*. Developments in Marine Geology. Volume 1: Elsevier; 2007. p. 213–62.
18. Darling KF, Wade CM. The genetic diversity of planktic foraminifera and the global distribution of ribosomal RNA genotypes. *Marine Micropaleontology*. 2008; 67(3–4):216–38. <http://dx.doi.org/10.1016/j.marmicro.2008.01.009>.
19. Purvis A, Hector A. Getting the measure of biodiversity. *Nature*. 2000; 405(6783):212–9. <http://dx.doi.org/10.1038/35012221>. doi: 10.1038/35012221 PMID: 10821281
20. Magurran AE. *Measuring Biological Diversity*: Blackwell Publishing Ltd; 2004. 256 p.
21. Díaz S, Cabido M. Vive la différence: plant functional diversity matters to ecosystem processes. *Trends in Ecology & Evolution*. 2001; 16(11):646–55. [http://dx.doi.org/10.1016/S0169-5347\(01\)02283-2](http://dx.doi.org/10.1016/S0169-5347(01)02283-2).
22. Pigot AL, Owens IPF, Orme CDL. Speciation and extinction drive the appearance of directional range size evolution in phylogenies and the fossil record. *PLoS Biol*. 2012; 10(2):e1001260. <http://dx.doi.org/10.1371/journal.pbio.1001260>. doi: 10.1371/journal.pbio.1001260 PMID: 22371689
23. Ezard THG, Pearson PN, Aze T, Purvis A. The meaning of birth and death (in macroevolutionary birth-death models). *Biology letters*. 2012; 8(1):139–42. <http://dx.doi.org/10.1098/rsbl.2011.0699>. doi: 10.1098/rsbl.2011.0699 PMID: 21900313
24. Longhurst AR. *Ecological Geography of the Sea*. 2nd ed: Academic Press; 2007. 542 p.
25. Colwell RK, Lees DC. The mid-domain effect: geometric constraints on the geography of species richness. *Trends in Ecology & Evolution*. 2000; 15(2):70–6. [http://dx.doi.org/10.1016/S0169-5347\(99\)01767-X](http://dx.doi.org/10.1016/S0169-5347(99)01767-X).
26. Beaugrand G, Rombouts I, Kirby RR. Towards an understanding of the pattern of biodiversity in the oceans. *Global Ecology and Biogeography*. 2013; 22(4):440–9. <http://dx.doi.org/10.1111/geb.12009>.
27. Hillebrand H. Strength, slope and variability of marine latitudinal gradients. *Marine Ecology Progress Series*. 2004; 273:251–67. <http://dx.doi.org/10.3354/meps273251>.
28. Allen AP, Gillooly JF. Assessing latitudinal gradients in speciation rates and biodiversity at the global scale. *Ecol Lett*. 2006; 9(8):947–54. <http://dx.doi.org/10.1111/j.1461-0248.2006.00946.x>. doi: 10.1111/j.1461-0248.2006.00946.x PMID: 16913938
29. Powell MG, Beresford VP, Colaianni BA. The latitudinal position of peak marine diversity in living and fossil biotas. *Journal of Biogeography*. 2012; 39(9):1687–94. <http://dx.doi.org/10.1111/j.1365-2699.2012.02719.x>.
30. Mittelbach GG, Schemske DW, Cornell HV, Allen AP, Brown JM, Bush MB, et al. Evolution and the latitudinal diversity gradient: speciation, extinction and biogeography. *Ecol Lett*. 2007; 10(4):315–31. <http://dx.doi.org/10.1111/j.1461-0248.2007.01020.x>. doi: 10.1111/j.1461-0248.2007.01020.x PMID: 17355570
31. Al-Sabouni N, Kučera M, Schmidt DN. Vertical niche separation control of diversity and size disparity in planktonic foraminifera. *Marine Micropaleontology*. 2007; 63(1–2):75–90. <http://dx.doi.org/10.1016/j.marmicro.2006.11.002>.
32. Powell MG, Kowalewski M. Increase in evenness and sampled alpha diversity through the Phanerozoic: comparison of early Paleozoic and Cenozoic marine fossil assemblages. *Geology*. 2002; 30(4):331–4. [http://dx.doi.org/10.1130/0091-7613\(2002\)030<0331:ieasa>2.0.co;2](http://dx.doi.org/10.1130/0091-7613(2002)030<0331:ieasa>2.0.co;2).



33. Bé AWH, Hutson WH. Ecology of planktonic foraminifera and biogeographic patterns of life and fossil assemblages in the Indian Ocean. *Micropaleontology*. 1977; 23(4):369–414. <http://dx.doi.org/10.2307/1485406>.
34. Sanders HL. Marine benthic diversity: a comparative study. *The American Naturalist*. 1968; 102(925):243–82. <http://dx.doi.org/10.1086/282541>.
35. Rombouts I, Beaugrand G, Ibañez F, Gasparini S, Chiba S, Legendre L. Global latitudinal variations in marine copepod diversity and environmental factors. *Proceedings of the Royal Society B: Biological Sciences*. 2009; 276(1670):3053–62. <http://dx.doi.org/10.1098/rspb.2009.0742>. doi: 10.1098/rspb.2009.0742 PMID: 19515670
36. Hoffmann AA, Hercus MJ. Environmental stress as an evolutionary force. *BioScience*. 2000; 50(3):217–26. [http://dx.doi.org/10.1641/0006-3568\(2000\)050\[0217:esaaef\]2.3.co;2](http://dx.doi.org/10.1641/0006-3568(2000)050[0217:esaaef]2.3.co;2).
37. Wiens JJ, Donoghue MJ. Historical biogeography, ecology and species richness. *Trends in Ecology & Evolution*. 2004; 19(12):639–44. <http://dx.doi.org/10.1016/j.tree.2004.09.011>.
38. Weiner AKM, Weinkauff MFG, Kurasawa A, Darling KF, Kučera M, Grimm GW. Phylogeography of the tropical planktonic foraminifera lineage *Globigerinella* reveals isolation inconsistent with passive dispersal by ocean currents. *PLoS ONE*. 2014; 9(3):e92148. <http://dx.doi.org/10.1371/journal.pone.0092148>. doi: 10.1371/journal.pone.0092148 PMID: 24663038
39. Darling KF, Wade CM, Stewart IA, Kroon D, Dingle R, Brown AJL. Molecular evidence for genetic mixing of Arctic and Antarctic subpolar populations of planktonic foraminifers. *Nature*. 2000; 405(6782):43–7. <http://dx.doi.org/10.1038/35011002>. doi: 10.1038/35011002 PMID: 10811211
40. Ezard THG, Aze T, Pearson PN, Purvis A. Interplay between changing climate and species' ecology drives macroevolutionary dynamics. *Science*. 2011; 332(6027):349–51. <http://dx.doi.org/10.1126/science.1203060>. doi: 10.1126/science.1203060 PMID: 21493859
41. Peters SE, Kelly DC, Fraass AJ. Oceanographic controls on the diversity and extinction of planktonic foraminifera. *Nature*. 2013; 493:398–401. <http://dx.doi.org/10.1038/nature11815>. doi: 10.1038/nature11815 PMID: 23302802
42. Jablonski D, Roy K, Valentine JW. Out of the tropics: evolutionary dynamics of the latitudinal diversity gradient. *Science*. 2006; 314(5796):102–6. <http://dx.doi.org/10.1126/science.1130880>. doi: 10.1126/science.1130880 PMID: 17023653
43. Valentine JW, Jablonski D, Krug AZ, Roy K. Incumbency, diversity, and latitudinal gradients. *Paleobiology*. 2008; 34(2):169–78. [http://dx.doi.org/10.1666/0094-8373\(2008\)034\[0169:IDALG\]2.0.CO;2](http://dx.doi.org/10.1666/0094-8373(2008)034[0169:IDALG]2.0.CO;2).
44. Brown JH, Gillooly JF, Allen AP, Savage VM, West GB. Toward a metabolic theory of ecology. *Ecology*. 2004; 85(7):1771–89. <http://dx.doi.org/10.1890/03-9000>.
45. Allen AP, Gillooly JF, Savage VM, Brown JH. Kinetic effects of temperature on rates of genetic divergence and speciation. *Proceedings of the National Academy of Sciences*. 2006; 103(24):9130–5. <http://dx.doi.org/10.1073/pnas.0603587103>.
46. Hawkins BA, Albuquerque FS, Araújo MB, Beck J, Bini LM, Cabrero-Sañudo FJ, et al. A global evaluation of metabolic theory as an explanation for terrestrial species richness gradients. *Ecology*. 2007; 88(8):1877–88. <http://dx.doi.org/10.1890/06-1444.1>. PMID: 17824415
47. Fuhrman JA, Steele JA, Hewson I, Schwalbach MS, Brown MV, Green JL, et al. A latitudinal diversity gradient in planktonic marine bacteria. *Proceedings of the National Academy of Sciences*. 2008; 105(22):7774–8. <http://dx.doi.org/10.1073/pnas.0803070105>.
48. Crame JA. The nature and origin of taxonomic diversity gradients in marine bivalves. *Geological Society, London, Special Publications*. 2000; 177(1):347–60. <http://dx.doi.org/10.1144/gsl.sp.2000.177.01.23>.
49. Berger WH. Planktonic foraminifera: selective solution and the lysocline. *Marine Geology*. 1970; 8(2):111–38. [http://dx.doi.org/10.1016/0025-3227\(70\)90001-0](http://dx.doi.org/10.1016/0025-3227(70)90001-0).
50. Kučera M, Rosell-Mele A, Schneider R, Waelbroeck C, Weinelt M. Multiproxy Approach for the Reconstruction of the Glacial Ocean surface (MARGO). *Quaternary Science Reviews*. 2005; 24(7–9):813–9. <http://dx.doi.org/10.1016/j.quascirev.2004.07.017>.
51. Aurahs R, Treis Y, Darling KF, Kučera M. A revised taxonomic and phylogenetic concept for the planktonic foraminifer species *Globigerinoides ruber* based on molecular and morphometric evidence. *Marine Micropaleontology*. 2011; 79(1–2):1–14. <http://dx.doi.org/10.1016/j.marmicro.2010.12.001>.
52. Hurlbert SH. The nonconcept of species diversity: a critique and alternative parameters. *Ecology*. 1971; 52(4):577–86. <http://dx.doi.org/10.2307/1934145>.
53. Colwell RK, Chao A, Gotelli NJ, Lin S-Y, Mao CX, Chazdon RL, et al. Models and estimators linking individual-based and sample-based rarefaction, extrapolation and comparison of assemblages. *Journal of Plant Ecology*. 2012; 5(1):3–21. <http://dx.doi.org/10.1093/jpe/rtr044>.
54. Simpson EH. Measurement of diversity. *Nature*. 1949; 163:688. <http://dx.doi.org/10.1038/163688a0>.

55. Smith B, Wilson JB. A consumer's guide to evenness indices. *Oikos*. 1996;70–82. <http://dx.doi.org/10.2307/3545749>.
56. Villéger S, Mason NWH, Mouillot D. New multidimensional functional diversity indices for a multifaceted framework in functional ecology. *Ecology*. 2008; 89(8):2290–301. <http://dx.doi.org/10.1890/07-1206.1>. PMID: 18724739
57. Veal A. Cope's rule in Cenozoic macroperforate planktonic foraminifera: Imperial College London; 2010.
58. Bé AWH, Bishop JKB, Sverdløve MS, Gardner WD. Standing stock, vertical distribution and flux of planktonic foraminifera in the Panama Basin. *Marine Micropaleontology*. 1985; 9(4):307–33. [http://dx.doi.org/10.1016/0377-8398\(85\)90002-7](http://dx.doi.org/10.1016/0377-8398(85)90002-7).
59. Sen-Gupta BK. *Modern Foraminifera*: Kluwer Academic Publishers; 2002. 371 p.
60. Feldman AH. The evolutionary origin and development of the Neogene planktonic foraminiferal *Globorotalia* (*Truncorotalia*) Subgenus: the mode and tempo of speciation and the origin of coiling direction reversals and dominance: Florida State University; 2003.
61. Coxall HK, Wilson PA, Pearson PN, Sexton PF. Iterative evolution of digitate planktonic foraminifera. *Paleobiology*. 2007; 33(4):495–516. <http://dx.doi.org/10.1666/06034.1>.
62. Kasemann SA, Schmidt DN, Pearson PN, Hawkesworth CJ. Biological and ecological insights into Ca isotopes in planktic foraminifers as a palaeotemperature proxy. *Earth and Planetary Science Letters*. 2008; 271(1–4):292–302. <http://dx.doi.org/10.1016/j.epsl.2008.04.007>.
63. Birch H, Coxall HK, Pearson PN, Kroon D, O'Regan M. Planktonic foraminifera stable isotopes and water column structure: disentangling ecological signals. *Marine Micropaleontology*. 2013; 101:127–45. <http://dx.doi.org/10.1016/j.marmicro.2013.02.002>.
64. Kučera M, Morard R, Siccha M, Weiner A, Weinkauff MFG. Cruise report of RV Sonne Cruise SO226-3. DipFIP—The extent and structure of cryptic diversity in morphospecies of planktonic foraminifera of the Indopacific Warm Pool. Wellington—Kaohsiung, 04.03.2013–28.03.2013. 2013.
65. Ezard THG, Edgar KM, Hull PM. Environmental and biological controls on size-specific  $\delta^{13}\text{C}$  and  $\delta^{18}\text{O}$  in recent planktonic foraminifera. *Paleoceanography*. 2015; 30(3):151–73. <http://dx.doi.org/10.1002/2014PA002735>.
66. Siccha M, Trommer G, Schulz H, Hemleben C, Kucera M. Factors controlling the distribution of planktonic foraminifera in the Red Sea and implications for the development of transfer functions. *Marine Micropaleontology*. 2009; 72(3–4):146–56. <http://dx.doi.org/10.1016/j.marmicro.2009.04.002>.
67. Locarnini RA, Mishonov AV, Antonov JL, Boyer TP, Garcia HE, Baranova OK, et al. *World Ocean Atlas 2009, Volume 1: Temperature*. Levitus S, editor. NESDIS 68, U.S. Government Printing Office, Washington, D.C.2010. 184 p.
68. Antonov JL, Seidov D, Boyer TP, Locarnini RA, Mishonov AV, Garcia HE, et al. *World Ocean Atlas 2009, Volume 2: Salinity*. Levitus S, editor. NESDIS 68, U.S. Government Printing Office, Washington, D.C.2010. 184 p.
69. Schlitzer R. *Ocean Data View*. 2016.
70. de Boyer Montégut C, Mignot J, Lazar A, Cravatte S. Control of salinity on the mixed layer depth in the world ocean: 1. General description. *Journal of Geophysical Research: Oceans*. 2007; 112(C6):C06011. <http://dx.doi.org/10.1029/2006JC003953>.
71. Archer DE. An atlas of the distribution of calcium carbonate in sediments of the deep sea. *Global Biogeochemical Cycles*. 1996; 10(1):159–74. <http://dx.doi.org/10.1029/95GB03016>.
72. Garcia HE, Locarnini RA, Boyer TP, Antonov JL, Zweng MM, Baranova OK, et al. *World Ocean Atlas 2009, Volume 3: Dissolved Oxygen, Apparent Oxygen Utilization, and Oxygen Saturation*. Levitus S, editor. NESDIS 68, U.S. Government Printing Office, Washington, D.C.2010. 344 p.
73. Heiberger RM, Holland B. *Statistical Analysis and Data Display: An Intermediate Course With Examples in S-Plus, R, and SAS*: Springer; 2004. 756 p.
74. Vaquer-Sunyer R, Duarte CM. Thresholds of hypoxia for marine biodiversity. *Proceedings of the National Academy of Sciences*. 2008; 105(40):15452–7. <http://dx.doi.org/10.1073/pnas.0803833105>.
75. Hurlbert SH. Pseudoreplication and the design of ecological field experiments. *Ecological Monographs*. 1984; 54(2):187–211. <http://dx.doi.org/10.2307/1942661>.
76. Bjørnstad ON, Falck W. Nonparametric spatial covariance functions: estimation and testing. *Environmental and Ecological Statistics*. 2001; 8(1):53–70. <http://dx.doi.org/10.1023/A:1009601932481>.
77. Schabenberger O, Gotway CA. *Statistical Methods for Spatial Data Analysis*: CRC Press; 2004. 488 p.
78. Wood SN. *Generalized Additive Models: An Introduction with R*: Chapman & Hall/CRC; 2006. 392 p.

79. Kissling WD, Carl G. Spatial autocorrelation and the selection of simultaneous autoregressive models. *Global Ecology and Biogeography*. 2008; 17(1):59–71. <http://dx.doi.org/10.1111/j.1466-8238.2007.00334.x>.
80. Beale CM, Lennon JJ, Yearsley JM, Brewer MJ, Elston DA. Regression analysis of spatial data. *Ecol Lett*. 2010; 13(2):246–64. <http://dx.doi.org/10.1111/j.1461-0248.2009.01422.x> PMID: 20102373
81. Cooper N, Purvis A. Body size evolution in mammals: complexity in tempo and mode. *The American Naturalist*. 2010; 175(6):727–38. <http://dx.doi.org/10.1086/652466>. doi: 10.1086/652466 PMID: 20394498
82. Crawley MJ. *The R book*: John Wiley & Sons; 2007. 942 p.
83. Nagelkerke NJD. A note on a general definition of the coefficient of determination. *Biometrika*. 1991; 78(3):691–2. <http://dx.doi.org/10.1093/biomet/78.3.691>.
84. R Core Team. *R: A language and environment for statistical computing*. R Foundation for Statistical Computing; 2014.
85. Pebesma EJ. Multivariable geostatistics in S: the gstat package. *Computers & Geosciences*. 2004; 30(7):683–91. <http://dx.doi.org/10.1016/j.cageo.2004.03.012>.
86. Bivand R. *spdep: Spatial dependence: weighting schemes, statistics and models*. R package version 0.5–74; 2014.
87. Žarić S, Donner B, Fischer G, Mulitza S, Wefer G. Sensitivity of planktic foraminifera to sea surface temperature and export production as derived from sediment trap data. *Marine Micropaleontology*. 2005; 55(1–2):75–105. <http://dx.doi.org/10.1016/j.marmicro.2005.01.002>.
88. Schiebel R, Hemleben C. Modern planktic foraminifera. *Paläontol Z*. 2005; 79(1):135–48. <http://dx.doi.org/10.1007/BF03021758>.
89. Bijma J, Faber WW, Hemleben C. Temperature and salinity limits for growth and survival of some planktonic foraminifera in laboratory cultures. *The Journal of Foraminiferal Research*. 1990; 20(2):95–116. <http://dx.doi.org/10.2113/gsjfr.20.2.95>.
90. Stephens PA, Sutherland WJ, Freckleton RP. What is the allee effect? *Oikos*. 1999; 87(1):185–90. <http://dx.doi.org/10.2307/3547011>.
91. Economos AC. Brain-life span conjecture: a reevaluation of the evidence. *Gerontology*. 1980; 26(2):82–9. <http://dx.doi.org/10.1159/000212399>. PMID: 7351310
92. Moore TC, Hutson WH, Kipp N, Hays JD, Prell W, Thompson P, et al. The biological record of the ice-age ocean. *Palaeogeography, Palaeoclimatology, Palaeoecology*. 1981; 35(0):357–70. [http://dx.doi.org/10.1016/0031-0182\(81\)90102-4](http://dx.doi.org/10.1016/0031-0182(81)90102-4).
93. Stenseth NC, Smith JM. Coevolution in ecosystems: red queen evolution or stasis? *Evolution*. 1984; 38(4):870–80. <http://dx.doi.org/10.2307/2408397>.
94. Webb CO, Ackerly DD, McPeck MA, Donoghue MJ. Phylogenies and community ecology. *Annual Review of Ecology, Evolution and Systematics*. 2002; 33:475–505. <http://dx.doi.org/10.1146/annurev.ecolsys.33.010802.150448>.
95. McKinney ML. Biodiversity dynamics: niche preemption and saturation in diversity equilibria. In: McKinney ML, Drake JA, editors. *Biodiversity Dynamics: Turnover of Populations, Taxa and Communities*: Columbia University Press; 1998. p. 1–16.
96. Purvis A, Fritz SA, Rodríguez J, Harvey PH, Grenyer R. The shape of mammalian phylogeny: patterns, processes and scales. *Philosophical Transactions of the Royal Society B: Biological Sciences*. 2011; 366(1577):2462–77. <http://dx.doi.org/10.1098/rstb.2011.0025>.
97. Jablonski D. The tropics as a source of evolutionary novelty through geological time. *Nature*. 1993; 364(6433):142–4. <http://dx.doi.org/10.1038/364142a0>.
98. Wade BS, Pearson PN, Berggren WA, Pälike H. Review and revision of Cenozoic tropical planktonic foraminiferal biostratigraphy and calibration to the geomagnetic polarity and astronomical time scale. *Earth-Science Reviews*. 2011; 104(1–3):111–42. <http://dx.doi.org/10.1016/j.earscirev.2010.09.003>.
99. Gaston KJ. Global patterns in biodiversity. *Nature*. 2000; 405(6783):220–7. <http://dx.doi.org/10.1038/35012228>. doi: 10.1038/35012228 PMID: 10821282