

Cytomegalovirus infection does not impact on survival or time to first treatment in patients with Chronic Lymphocytic Leukaemia

Parry, Helen; Damery, Sarah; Hudson, Christopher ; Maurer, Matthew; Cerhan, James; Pachnio, Annette; Begum, Jusnara; Slager, Susan; Fegan, Christopher; Man, Stephen ; Pepper, Christopher ; Shanafelt, Tait; Pratt, Guy; Moss, Paul

DOI:
[10.1002/ajh.24403](https://doi.org/10.1002/ajh.24403)

License:
Creative Commons: Attribution (CC BY)

Document Version
Publisher's PDF, also known as Version of record

Citation for published version (Harvard):
Parry, H, Damery, S, Hudson, C, Maurer, M, Cerhan, J, Pachnio, A, Begum, J, Slager, S, Fegan, C, Man, S, Pepper, C, Shanafelt, T, Pratt, G & Moss, P 2016, 'Cytomegalovirus infection does not impact on survival or time to first treatment in patients with Chronic Lymphocytic Leukaemia', *American Journal of Haematology*, vol. 91, no. 8, pp. 776–781. <https://doi.org/10.1002/ajh.24403>

[Link to publication on Research at Birmingham portal](#)

General rights

Unless a licence is specified above, all rights (including copyright and moral rights) in this document are retained by the authors and/or the copyright holders. The express permission of the copyright holder must be obtained for any use of this material other than for purposes permitted by law.

- Users may freely distribute the URL that is used to identify this publication.
- Users may download and/or print one copy of the publication from the University of Birmingham research portal for the purpose of private study or non-commercial research.
- User may use extracts from the document in line with the concept of 'fair dealing' under the Copyright, Designs and Patents Act 1988 (?)
- Users may not further distribute the material nor use it for the purposes of commercial gain.

Where a licence is displayed above, please note the terms and conditions of the licence govern your use of this document.

When citing, please reference the published version.

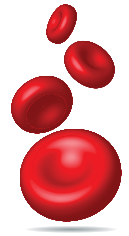
Take down policy

While the University of Birmingham exercises care and attention in making items available there are rare occasions when an item has been uploaded in error or has been deemed to be commercially or otherwise sensitive.

If you believe that this is the case for this document, please contact UBIRA@lists.bham.ac.uk providing details and we will remove access to the work immediately and investigate.

Cytomegalovirus infection does not impact on survival or time to first treatment in patients with chronic lymphocytic leukemia

Helen Marie Parry,^{1*} Sarah Damery,² Christopher Hudson,³ Matthew J. Maurer,⁴ James R. Cerhan,⁴ Annette Pachnio,¹ Jusnara Begum,¹ Susan L. Slager,⁴ Christopher Fegan,⁵ Stephen Man,⁵ Christopher Pepper,⁵ Tait D. Shanafelt,⁶ Guy Pratt,¹ and Paul A. H. Moss¹



Human cytomegalovirus (HCMV) is a widely prevalent herpes virus which establishes a state of chronic infection. The establishment of CMV-specific immunity controls viral reactivation and leads to the accumulation of very large numbers of virus-specific T cells which come to dominate the immune repertoire. There is concern that this may reduce the immune response to heterologous infections and HCMV infection has been associated with reduced survival in elderly people. Patients with chronic lymphocytic leukemia (B-CLL) suffer from a state of immune suppression but have a paradoxical increase in the magnitude of the CMV-specific T cell and humoral immune response. As such, there is now considerable interest in how CMV infection impacts on the clinical outcome of patients with B-CLL. Utilizing a large prospective cohort of patients with B-CLL ($n = 347$) we evaluated the relationship between HCMV seropositivity and patient outcome. HCMV seropositive patients had significantly worse overall survival than HCMV negative patients in univariate analysis (HR = 2.28, 95% CI: 1.34–3.88; $P = 0.002$). However, CMV seropositive patients were 4 years older than seronegative donors and this survival difference was lost in multivariate modeling adjusted for age and other validated prognostic markers ($P = 0.34$). No significant difference was found in multivariate modeling between HCMV positive and negative patients in relation to the time to first treatment (HR = 1.12, 95% CI: 0.68–1.84; $P = 0.65$). These findings in a second independent cohort of 236 B-CLL patients were validated. In conclusion no evidence that HCMV impacts on the clinical outcome of patients with B-CLL was found.

Am. J. Hematol. 00:000–000, 2016. © 2016 The Authors. American Journal of Hematology Published by Wiley Periodicals, Inc.

■ Introduction

Human Cytomegalovirus (HCMV) is a prevalent beta-herpes virus that is usually asymptomatic upon primary infection. HCMV maintains life-long latency within cells of the myeloid lineage and its prevalence increases with age [1,2]. The age-adjusted prevalence in the United States is 50.4% by the age of 50 years [3] and continues to increase with each decade of life [4].

In health, a significant proportion of both CD4+ and CD8+ T cells are required to maintain viral latency and prevent HCMV viral reactivation [5,6]. This extreme expansion of HCMV-specific T cells, which is most marked in the CD8+ T cell repertoire, contributes to a reduction in the number of naïve T cells and leads to an inversion of the CD4:CD8 T cell ratio [7]. There is increasing concern that the burden of CMV infection can lead to health problems, particularly in older people, and CMV seropositivity has been associated with impaired responses to vaccination [8], increasing levels of inflammatory cytokines [9] and an increase in overall morbidity and mortality in several studies [10,11].

Chronic lymphocytic leukemia (B-CLL) is characterized by the proliferation of mature B lymphocytes and has a median age at diagnosis of 71 years (<https://www.hmrn.org/statistics/incidence>; cited 1/6/15). The development of B-CLL leads to a state of immune suppression and patients exhibit an increased susceptibility to infection from an early stage of disease [12]. The mechanisms that underlie the reduction in immune competence are multifactorial but include hypogammaglobulinemia and T cell dysfunction [13]. In addition, the burden of chronic infection and changes in the T cell repertoire are also important for overall prognosis in B-CLL, and an inverted CD4:CD8 T cell ratio is associated with disease progression [14]. The CD4:CD8 ratio is markedly lower in CMV seropositive individuals compared with those who remain uninfected, and this effect is particularly profound in patients with CLL. Indeed, one of the paradoxes of CMV infection in patients with CLL is that the magnitude of the virus-specific immune response is actually higher than in healthy individuals, despite the state of immune suppression, in a mechanism that is

¹Institute of Immunology and Immunotherapy, University of Birmingham, Birmingham, B15 2TT, United Kingdom; ²Institute of Applied Health Research, University of Birmingham, Birmingham, B15 2TT, United Kingdom; ³Faculty of Medicine & Health Sciences, University of Nottingham, Leicestershire, LE12 5RD, United Kingdom; ⁴Department of Health Sciences Research, Mayo Clinic, Rochester, Minnesota; ⁵Division of Cancer & Genetics, Heath Park, Cardiff, CF14 4XN, United Kingdom; ⁶Department of Medicine, Mayo Clinic, Rochester, Minnesota

This is an open access article under the terms of the Creative Commons Attribution License, which permits use, distribution and reproduction in any medium, provided the original work is properly cited.

Conflict of interest: Nothing to report

*Correspondence to: Helen M. Parry; Institute of Immunology and Immunotherapy, University of Birmingham. Birmingham, B15 2TT, United Kingdom. E-mail: H.m.parry@bham.ac.uk

Contract grant sponsor: Wellcome Fellowship grant and also a Mayo partnership grant with the University of Birmingham.

Received for publication: 5 March 2016; Revised: 22 April 2016; Accepted: 25 April 2016

Am. J. Hematol. 00:00–00, 2016.

Published online: 00 Month 2016 in Wiley Online Library (wileyonlinelibrary.com).

DOI: 10.1002/ajh.24403

TABLE I. Patient Characteristics of the Discovery and Confirmatory Cohorts

	Discovery cohort (n = 347)	Confirmatory cohort (n = 236)
Median age at diagnosis (years)	62 (37.0–91)	65.1 (24–99)
Follow up time (years + IQR)	2.98 (2.41–4.17)	7 (4–10.2)
Male sex	237 (68%)	150 (64%)
Binet stage A	180 (52%)	182 (77%)
Binet stage B	155 (45%)	25 (11%)
Binet stage C	11 (3%)	27 (11%)
Missing	1	2
CD38 positive	82 (24%)	99 (42%)
CD38 negative	218 (63%)	117 (50%)
CD38 missing	47	20
Zap70 positive	93 (27%)	82 (35%)
Zap 70 negative	203 (59%)	134 (57%)
Zap 70 missing	51	20
IGHV mutated	176 (51%)	125 (53%)
IGHV unmutated	104 (30%)	40 (12%)
IGHV missing	67	71
CD49d positive	64 (18%)	102 (43.2%)
Cd49d negative	131 (38%)	69 (29.2%)
Cd49d missing	152	65
FISH		
Normal	76(22%)	61(26%)
13q–	120(35%)	37(16%)
12+	50(14%)	6(3%)
11q–	22(6%)	15(6%)
17p–	11(3%)	5(2%)
Other	5(1%)	2(0.8%)
Missing	63	110

believed to be a response to increased levels of subclinical viral reactivation [15,16]. As such there is now considerable interest in how chronic CMV infection may influence the clinical profile of patients with B-CLL [17]. Indeed, if the infection was shown to accelerate the progression of disease then there may be a potential role for the use of anti-viral medication in disease management [18].

We utilized two large independent prospective cohorts of newly diagnosed patients (the “discovery” and “confirmation” cohorts) to evaluate the relationship between HCMV seropositivity and disease outcome in patients with B-CLL. In particular we examined the relationship between CMV serostatus and time to treatment (TTT) and overall survival (OS) and show that infection status does not impact significantly on these variables.

Methods

Patients in the discovery cohort ($n = 347$) were participants in the ongoing prospective cohort study of NHL patients from the Molecular Epidemiology Resource of the University of Iowa/Mayo Clinic Lymphoma Specialized Program of Research Excellence (SPORE). This study was reviewed and approved by the Human Subjects Institutional Review Board at the Mayo Clinic and the University of Iowa, and written informed consent was obtained from all participants in accordance with the Declaration of Helsinki. Since September 2002, enrollment was offered to consecutive newly diagnosed patients with B-CLL, evaluated at Mayo Clinic Rochester or the University of Iowa within 9 months of diagnosis [19]. All patients were US residents aged 18 years and older. Exclusion criteria included known HIV infection and unwillingness or inability to provide written informed consent. Patients fulfilled IWCLL criteria and/or fulfilled the World Health Organization criteria for the small lymphocytic lymphoma variant (SLL) variant of B-CLL. Baseline clinical, laboratory, and treatment data were abstracted from medical records and participants provided peripheral blood serum samples. All participants were then followed every 6 months for the first 3 years, and then annually thereafter; disease progression and deaths were verified through medical record review.

For the confirmation cohort, newly diagnosed patients with B-CLL were enrolled from clinics at the University Hospital of Wales and Llandough Hospital. Patients were diagnosed by an experienced hematologist and met the IWCLL criteria for B-CLL. Informed consent was taken in accordance with ethical approval obtained from the South East Wales Research ethics committee. Samples were taken within 12 months of diagnosis and prior to any treatment. Data for disease pro-

gression and mortality was collected on an annual basis and verified through medical records.

Prognostic parameters. Prognostic testing, including immunoglobulin heavy chain variable [IGHV] region gene mutation analysis, ZAP-70 status, CD38 status, CD49d status, and cytogenetic abnormalities assessed by interphase FISH testing, were all performed as part of clinical or research studies using methods previously described [20–22]. Adverse FISH results were defined by the presence of 17p deletion or 11q deletion. Serum immunoglobulin measurement was only available at the time of sample collection in the discovery cohort.

CMV ELISA. HCMV seropositivity and HCMV IgG titer were determined using the previously described CMV enzyme-linked immunosorbent assay (ELISA) [23]. Briefly, mock and viral-infected lysate was coated onto ELISA plates and incubated overnight. Patient plasma samples and a series dilution of standards (derived from three known HCMV-positive plasma donors) were added to the plate for 1 hr. The plate was washed three times. An anti-human IgG-horseradish peroxidase secondary antibody was then added to the plate for 1 hr. After further washing, TMB (3,3',5,5'-tetramethylbenzidine) substrate was added and the plate kept in the dark for 10 minutes before the addition of 1 M HCl. The sample was assessed using an ELISA reader at 450 nm. To determine HCMV titers, mock values were first subtracted from lysate values and titers then calculated against the standard curve. Values greater than 10 were considered to be seropositive. To ensure accuracy, all samples were tested in duplicate.

Statistical analysis. Chi-square testing (and Fisher's exact test where appropriate) was used to assess the association between HCMV seropositivity and demographic, clinical and prognostic factors in B-CLL patients, and both the discovery and confirmation cohorts were characterized using descriptive statistics. For compatibility between datasets, Rai staging for the discovery cohort was converted to Binet staging. Rai 0/1 representing Binet A, Rai stage II representing Binet B, and Rai stage III/IV representing Binet stage C. TTT was defined as the time from diagnosis to disease progression requiring treatment. OS was defined as the time from diagnosis to death due to any cause. Patients without an event or death were censored at time of last known follow-up. Kaplan-Meier survival curves and Cox proportional hazards regression models were used to assess the association between HCMV positivity and the outcomes of interest. Cox models were adjusted for demographic and B-CLL prognostic factors which were found to impact significantly on survival and TTT in univariate analysis. An analysis of the continuously distributed CMV IgG ELISA values was also performed. HCMV titer was transformed to the base 2 log and entered as a covariate into cox regression analysis. Analyses were performed using SPSS Version 21 (Armonk NY: IBM Corp), and the threshold for statistical significance was set at $P = 0.05$. CMV ELISA results were analyzed using GraphPad Prism Version 5.03 (GraphPad Software, San Diego, CA), and CMV titers were calculated with reference to the standard curve.

Results

Patient cohorts

The discovery cohort consisted of 390 patients, of which 347 patients were identified as having serum available for CMV testing and were used to explore the relationship between CMV and clinical outcome in B-CLL. Serum samples were collected a median of 2.9 months following diagnosis (range 0–73).

The confirmatory cohort consisted of 236 patients. All patients had serum drawn within 12 months of diagnosis, median 5.8 months (range 0.5–11.75). The clinical characteristics for these two prospective observational cohorts are shown in Table I.

CMV status and clinical outcome

Discovery cohort. The median follow up time for this cohort was 3 years (IQR 2.4–4.2) and at the point of last data collection 68 participants [20% (68/347)] had died. Of the 347 participants, 198 (57%) were HCMV seropositive and 149 (43%) were HCMV seronegative. HCMV positive patients were significantly older at the time of diagnosis with a median age of 64 years (range 37–87) compared with 60 years in uninfected individuals (range 37–91); $P < 0.0001$. There was no association between HCMV seropositivity and any other demographic or clinical characteristic (Binet stage, sex, ECOG performance score or absolute lymphocyte count) or prognostic markers (ZAP-70, CD38, IGHV, CD49d, FISH) (Table II). About 49 deaths (25%) were recorded for the HCMV positive group and 19 deaths (13%) were noted in the HCMV negative group. Of the 68 deaths, 33 were unrelated to CLL and 29 were documented as a CLL-specific cause of

TABLE II. Association of CMV with Selected Characteristics of the Discovery Cohort

	CMV negative (n = 149) (43%)	CMV positive (n = 198) (57%)	P value
Age Median (range)	60 (37.0–91.0)	64 (37.0–87.0)	$P < 0.0001$
Gender			
Female	43 (28.9)	67 (66.2)	$P = 0.32$
Male	106 (71.1)	131 (33.8)	
Binet stage			
A	71 (47.7)	109 (55.3)	$P = 0.32$
B	72 (48.4)	83 (42.1)	
C	6 (4.0)	5 (2.5)	
Missing	0	1	
CD38			
Positive	34 (25.8)	48 (28.6)	$P = 0.59$
Negative	98 (74.2)	120 (71.4)	
Missing	17	30	
ZAP70			
Positive	42 (32.8)	51 (30.4)	$P = 0.65$
Negative	86 (67.2)	117 (69.6)	
Missing	21	30	
IGHV			
Mutated	81 (35.2)	95 (61.3)	$P = 0.55$
Unmutated	44 (64.8)	60 (38.7)	
Missing	24	43	
CD49d			
Positive	23 (27.7)	41 (36.6)	$P = 0.19$
Negative	60 (72.3)	71 (63.4)	
Missing	66	86	
FISH			
Normal	30 (24.4)	46 (28.6)	$P = 0.21$
13q	50 (40.7)	70 (43.5)	
Trisomy 12	25 (20.3)	25 (15.5)	
11q	13 (10.6)	9 (5.6)	
17p	2 (1.6)	9 (5.6)	
Other	3 (2.4)	2 (1.2)	
Missing	26	37	
Serum IgG			
N	95	95	$P = 0.63$
Mean (SD)	818.3 (281.3)	854.4 (316.0)	
Median	820	806	
Range	190.0–1750.0	189.0–2220.0	
Missing	54	61	

death (7 due to secondary malignancies, 3 due to infection, and 19 from refractory disease). The cause of death was not available for 6 patients.

In univariate analysis HCMV positive patients had significantly inferior overall survival, with the risk of death at any time point more than twice that observed in HCMV negative patients (HR 2.28, 95% CI: 1.34–3.88; $P = 0.0024$) (Fig. 1a). CLL-specific cause of death was also investigated in relation to CMV serostatus, HCMV positive patients again had a significantly higher risk of dying from CLL-related causes at any point than HCMV negative patients (HR 3.41, 95% CI: 1.37–8.47, $P = 0.008$).

However, after adjusting for age, Stage, ZAP-70, FISH, IGHV, CD38, and CD49d in a multivariate survival model, this risk was attenuated, with only age (HR 1.12; 95% CI: 1.06–1.19; $P < 0.0001$) and unmutated IGHV (HR 2.78; 95% CI: 1.07–7.23; $P = 0.036$) remaining significant as independent risk factors for OS. No difference in survival was seen between HCMV positive and negative participants in the multivariate model (HR = 0.61, 95% CI: 0.22–1.69; $P = 0.34$).

We next went on to investigate the relationship between CMV infection and the time to treatment, and this information was available on 322 of the original 349 patients in the cohort. The median time to first treatment was 7.4 years and at the last follow up 115 of the 322 patients (36%) were confirmed to have received treatment for B-CLL. A log rank test for differences between HCMV positive and

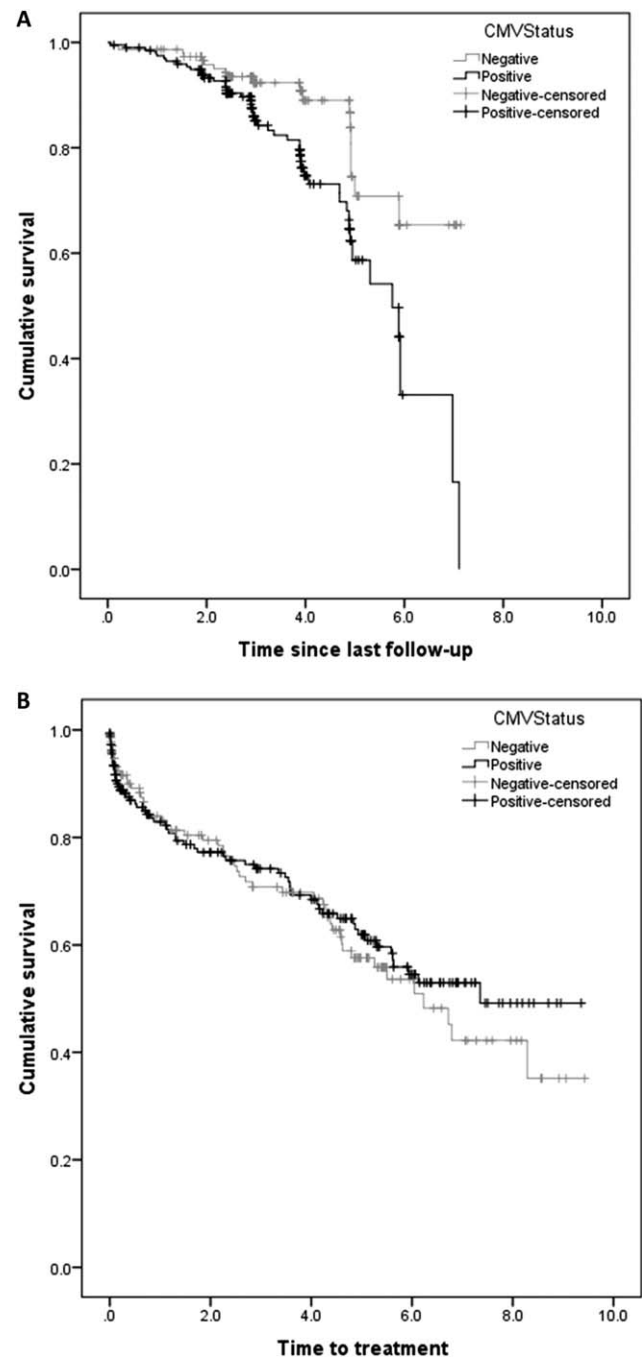


Figure 1. (A) Kaplan-Meier curve for overall survival by CMV status in the discovery cohort is shown. Univariate analysis showed CMV positive patients had significantly inferior overall survival, with a hazards ratio of 2.28 ($P = 0.0024$) However, this significance was lost on multivariate analysis (HR = 0.61, 95% CI: 0.22–1.69; $P = 0.34$) (B) demonstrates the time to first treatment by CMV status in the discovery cohort. No significant difference in time to first treatment was observed on multivariate analysis (HR = 1.12, 95% CI: 0.68–1.84; $P = 0.651$).

negative participants demonstrated no difference in time to first treatment in either a univariate model (HR = 0.90, 95% CI: 0.62–1.30; $P = 0.560$) or a multivariate model adjusted for age, Rai Stage, and prognostic variables (HR = 1.12, 95% CI: 0.68–1.84; $P = 0.651$). Binet stage C compared with stage A (HR = 0.33, 95% CI: 0.01–0.09; $P < 0.0001$) and stage B (HR = 0.11, 95% CI: 0.04–0.28; $P < 0.0001$), as well as expression of CD49d (HR 2.05, 95% CI: 1.16–3.62; $P = 0.013$) remained significant predictors of time to treatment after adjusting for other variables in the multivariate model (Fig. 1b).

TABLE III. Impact of CMV IgG Titer on Overall Survival and Time to First Treatment

OVERALL SURVIVAL	Median IgG titer (inter-quartile range) ^a all patients	Median IgG titer (inter-quartile range) alive patients	Median IgG titer (inter-quartile range) deceased patients	Number of deaths in CMV positive individuals (%)	Hazards ratio (95% CI)	P value
Discovery cohort	227.1 (113.8–503.4)	234.7 (114.6–556.1)	213.0 (105.2–440.7)	49/198 (25%)	0.95 (0.82–1.09)	0.46
Confirmatory cohort	202.1 (103.9–357.1)	196.9 (110.5–342.2)	209.5 (93.2–404.9)	75/179 (42%)	1.02 (0.88–1.19)	0.79
Combined cohorts	211.9 (106.8–434.6)	211.9 (114.6–448.8)	210.1 (98.3–433.1)	124/377 (33%)	1.01 (0.91–1.13)	0.80
TIME TO TREATMENT	Median IgG titer (inter-quartile range) ^a all patients	Median IgG titer (inter-quartile range) treated patients	Median IgG titer (inter-quartile range) untreated patients	Number of patients treated in CMV positive individuals (%)	Hazards ratio (95% CI)	P value
Discovery cohort	227.8 (118.5–506.5)	234.7 (123.2–455.0)	227.1 (107.0–522.7)	63/185 (34%)	0.99 (0.87–1.13)	0.93
Confirmatory cohort	202.1 (103.9–357.1)	204.0 (95.5–357.4)	185.7 (105.7–363.0)	86/179 (48%)	1.02 (0.89–1.17)	0.78
Combined cohorts	211.9 (107.1–445.6)	213.0 (115.0–418.6)	211.9 (107.1–445.6)	149/364 (41%)	1.00 (0.91–1.10)	0.97

^a Titer is the base 2 log, to take account of the non-linearity of the untransformed variable.

Confirmation cohort. In order to validate the results found in the discovery cohort, a further large cohort with a longer follow up time was assessed for the same outcome data. The median follow up time of the confirmation cohort was 7 years (IQR: 4–10.2 years). Of 236 patients in this cohort, 109 (46%) had required treatment at the point of last follow up and 93 had died (39%). 179 (76%) of the patients were found to be HCMV seropositive and CMV serostatus was not found to be associated with age at diagnosis within this cohort. No association between HCMV seropositivity and any of the other demographic, clinical, or prognostic markers was found in the confirmation cohort. Of the 93 deaths, 10 were unrelated to CLL and 83 were documented as a CLL-specific cause of death (3 due to secondary malignancies, 40 due to infection, and 40 from refractory disease).

As noted in the discovery cohort, a shorter median overall survival of 10.6 years was noted in HCMV positive participants (95% CI: 8.4–12.5) compared with 15.9 years (95% CI: 6.9–25.0) in HCMV negative participants although this did not reach statistical significance on either univariate (HR 1.45, 95% CI: 0.86–2.43; $P = 0.158$) or multivariate analysis (HR 0.96, 95% CI: 0.57–1.63; $P = 0.882$). Analysing CLL-specific cause of death also failed to reveal any significant difference between HCMV positive and negative patients 1.60 (0.91–2.81, $P = 0.100$).

When investigating the influence of CMV infection on TTT in this confirmation cohort, Binet stage, CD38, CD49d, ZAP-70, IGVH, and adverse FISH status were all found to impact significantly on TTT in univariate testing. Data was complete for prognostic factors in only 68 patients, of which 44 participants required treatment. No association between HCMV status and TTT was found once these prognostic variables were adjusted for in multivariate modeling (HR 1.13, 95% CI: 0.50–2.55; $P = 0.766$). Only Binet stage C compared with stage A (HR 0.43, 95% CI: 0.12–0.14; $P < 0.0001$) and stage B (HR: 0.29 (0.09–0.93); $P = 0.037$) were significant independent predictors of time to treatment.

CMV titer and clinical outcome

High titers of CMV-specific antibody have been associated with reduced overall survival in healthy elderly individuals and may represent a response to increased levels of subclinical viral load [24]. We investigated this in our cohorts by calculating hazard ratios for the association between patients with B-CLL and Log₂ HCMV titer as a continuous variable for both overall survival and time to treatment. Data were available on 198 HCMV seropositive B-CLL patients within the discovery cohort. About 49 deaths had occurred within this cohort and although a trend was observed between increasing antibody titer and reduced survival, this did not reach statistical significance (HR 0.95, 95% CI: 0.82–1.09; $P = 0.460$). Similarly, in the

confirmation cohort, 75 deaths occurred amongst 179 HCMV positive participants, but no relationship was seen between HCMV titer and OS (HR 1.02, 95% CI: 0.88–1.19; $P = 0.793$). Therefore, no significant relationship was found between level of CMV-specific antibody and overall survival in CMV positive patients.

Similarly, no significant associations were seen in either cohort between HCMV titer and TTT (Table III). Given the similar outcome data for HCMV seropositivity on OS and TTT in both cohorts, and in an attempt to increase the number of HCMV positive individuals available for statistical analysis, the datasets were pooled and used to assess whether the titer of HCMV IgG as a continuous variable impacts on overall survival or TTT. Data from 337 HCMV positive individuals were analyzed, of which 124 deaths were recorded during follow up, but again no relationship was found between HCMV titer and overall survival (HR 1.01, 95% CI: 0.91–1.13; $P = 0.800$) or time to treatment (HR 1.00, 95% CI: 0.91–1.10; $P = 0.972$).

Discussion

CMV is recognized as an important pathogen in patients who are immune suppressed and viral reactivation is a common occurrence in patients with B-CLL who undergo treatment with alemtuzumab. However, there is now interest in the potential health associations of chronic viral carriage in a range of clinical settings, particularly in patients with B-CLL in whom the CMV-specific T cell immune response can expand to a remarkably high frequency [15,16]. Despite this, no published epidemiological data exists investigating the relationship between CMV and B-CLL prognosis. This work, reports the prevalence of HCMV within the two cohorts was approximately 60%–70%, which is comparable with studies of viral seroprevalence in healthy people at a similar median age of 64 years [23]. As such we find no evidence that CMV infection is associated with the development of B-CLL. In this regard it is noteworthy that chronic viral infection has been suggested as a potential antigenic stimulus to account for the finding of shared immunoglobulin genes sequences in tumors from different patients. Indeed, the recurrent IGHV1-69 sequence that is common in B-CLL has been shown to react with the pUL32 phosphoprotein from CMV [25].

In the discovery cohort HCMV seropositivity was associated with a twofold increased risk of death on univariate analysis. However, this association was lost in multivariable analysis after adjusting for other prognostic variables, the most notable of which was age, as HCMV positive patients were on average 4 years older than the CMV seronegative patients. All other variables tested for within this cohort were not statistically different between CMV positive and negative patients. The prevalence of CMV is known to rise with increasing age and as such it may not be surprising that CMV seropositive

patients were somewhat older [24,26]. However, samples were tested at the point of diagnosis, which then raised an alternative possibility that CMV infection could potentially serve to delay the diagnosis of B-CLL. To address this question it would be important to obtain information on CMV serostatus on a healthy cohort from the same geographical area taken during the same time period but no appropriate cohort was available for comparison. Moreover, no difference was found between age and CMV serostatus in the confirmation cohort, which suggests that a potential protective effect of CMV infection on the diagnosis of B-CLL is unlikely. This discrepancy between the two cohorts in relation to age and CMV serostatus is likely to reflect the different geographical locations of the two cohorts, as the timing of primary exposure to CMV is known to vary dramatically depending on geographical and socio-economic factors [27].

The lack of an association between survival and CMV infection in B-CLL patients contrasts with studies which have investigated the impact of CMV status in healthy elderly individuals. This may be due partly to the younger age of the patients with B-CLL compared with studies of healthy elderly people, which have focused predominantly on those between 70 and 100 years of age [11,28,29]. In addition, the detrimental impact of chronic HCMV on the health of older people has been linked with elevated levels of inflammatory markers, including IL-6 [23,30,31], which are often already increased in patients with B-CLL and may therefore confound any impact of HCMV on further health outcomes [32,33]. It may also suggest that any negative effect of HCMV infection in the elderly is outweighed by a diagnosis of B-CLL. Another possibility that should not be discounted is that CMV infection may actually play a potential beneficial role on immune function in patients with B-CLL. The virus stimulates a strong Th1 immune response and leads to accumulation of large numbers of cytotoxic cells, including NK and $\gamma\delta$ T cells. CMV infection has been associated with a reduction in disease relapse after stem cell transplantation and may therefore potentially play a role in the setting of other hemopoietic malignancies [34,35].

In healthy elderly populations a low CD4:CD8 ratio and a high CMV-specific T cell response both predict for poor survival [36] and it has previously been suggested that CMV seropositivity may impact

on poorer survival in B-CLL, albeit using a small sample size ($n = 57$) and based on univariate analysis only [16]. Our current study suggests that HCMV does not impact on survival negatively and although HCMV status was determined around the time of diagnosis in this work, it is unlikely many (if any) patients who were CMV negative at diagnosis would later seroconvert [37]. As age can act as a confounding factor for HCMV seropositivity in survival analysis, a larger patient cohort with longer follow up time may be needed to identify if these factors act independently.

In addition, high HCMV-specific antibody titers have been correlated with poor clinical outcome in elderly donors [28] but we were unable to demonstrate this in patients with B-CLL. The development of hypogammaglobulinemia is a feature of progressive CLL but unlike other herpes viruses such as VZV and EBV, HCMV-specific IgG titers have been shown to increase with disease progression and progressive hypogammaglobulinemia. Indeed, in a large cohort of patients with CLL, almost 50% demonstrated an increase in their CMV-specific IgG titer 4.6 years later and all CMV positive patients were still found to have detectable CMV IgG [37]. As such it is unlikely that any patients with hypogammaglobulinemia were incorrectly identified as seronegative for latent CMV. The increase in CMV IgG observed over time may suggest episodes of reactivation are occurring. However, patients with B-CLL rarely suffer from overt clinical episodes of HCMV reactivation, except after treatment with alemtuzumab or following allogeneic transplantation, suggesting that CMV-specific T cell function is adequate to prevent clinical viral replication. Indeed, the function of CD8+ HCMV specific T cells is not obviously impaired in patients with CLL [38,39].

In conclusion, our data provide no evidence that CMV infection can predispose toward the development of B-CLL. In addition, established infection and HCMV-specific antibody titer do not appear to have an impact on time to first treatment or overall survival in newly diagnosed patients with B-CLL.

Acknowledgments

The authors thank the Mayo Clinic and Cardiff trial coordinators for their efforts in patient follow-up and data collection.

References

- Slobedman B, Mocarski ES. Quantitative analysis of latent human cytomegalovirus. *J Virol* 1999;73:4806–4812.
- Lopo S, Vinagre E, Palminha P, et al. Seroprevalence to cytomegalovirus in the Portuguese population, 2002-2003. *Euro Surveill* 2011;16:pii.
- Bate SL, Dollard SC, Cannon MJ. Cytomegalovirus seroprevalence in the United States: The national health and nutrition examination surveys, 1988-2004. *Clin Infect Dis* 2010;50:1439–1447.
- Vyse AJ, Hesketh LM, Pebody RG. The burden of infection with cytomegalovirus in England and Wales: How many women are infected in pregnancy? *Epidemiol Infect* 2009;137:526–533.
- Chidrawar S, Khan N, Wei W, et al. Cytomegalovirus-seropositivity has a profound influence on the magnitude of major lymphoid subsets within healthy individuals. *Clin Exp Immunol* 2009;155:423–432.
- Derhovanessian E, Maier AB, Hahnel K, et al. Infection with cytomegalovirus but not herpes simplex virus induces the accumulation of late-differentiated CD4+ and CD8+ T-cells in humans. *J Gen Virol* 2011;92:2746–2756.
- Olsson J, Wikby A, Johansson B, et al. Age-related change in peripheral blood T-lymphocyte subpopulations and cytomegalovirus infection in the very old: The Swedish longitudinal OCTO immune study. *Mech Ageing Dev* 2000;121:187–201.
- Trzonkowski P, Mysliwska J, Szmit E, et al. Association between cytomegalovirus infection, enhanced proinflammatory response and low level of anti-hemagglutinins during the anti-influenza vaccination—an impact of immunosenescence. *Vaccine* 2003;21:3826–3836.
- Weaver JD, Huang MH, Albert M, et al. Interleukin-6 and risk of cognitive decline: MacArthur studies of successful aging. *Neurology* 2002;59:371–378.
- Strandberg TE, Pitkala KH, Tilvis RS. Cytomegalovirus antibody level and mortality among community-dwelling older adults with stable cardiovascular disease. *Jama* 2009;301:380–382.
- Savva GM, Pachnio A, Kaul B, et al. Cytomegalovirus infection is associated with increased mortality in the older population. *Aging Cell* 2013;12:381–387.
- Parry HM, Birtwistle J, Whitelegg A, et al. Poor functional antibody responses are present in nearly all patients with chronic lymphocytic leukaemia, irrespective of total IgG concentration, and are associated with increased risk of infection. *Br J Haematol* 2015;171:887–890.
- Forconi F, Moss P. Perturbation of the normal immune system in patients with CLL. *Blood* 2015;126:573–581.
- Nunes CT, Wong R, Mason M, et al. Expansion of a CD8+PD-1+ replicative senescence phenotype in early stage CLL patients is associated with inverted CD4:CD8 ratios and disease progression. *Clin Cancer Res* 2011;18:678–687.
- Mackus WJM, Frakking FJ, Grummels A, et al. Expansion of CMV-specific CD8+CD45RA+CD27- T cells in B-cell chronic lymphocytic leukemia. *Blood* 2003;102:1057–1063.
- Pourghesari B, Bruton R, Parry H, et al. The number of cytomegalovirus-specific CD4+ T cells is markedly expanded in patients with B-cell chronic lymphocytic leukemia and determines the total CD4+ T-cell repertoire. *Blood* 2010;116:2968–2974.
- Katrinakis G, Kyriakou D, Alexandrakis M, et al. Evidence for involvement of activated CD8+/HLA-DR+ cells in the pathogenesis of neutropenia in patients with B-cell chronic lymphocytic leukaemia. *Eur J Haematol* 1995;55:33–41.
- Pachnio A, Begum J, Fox A, et al. Acyclovir therapy reduces the cd4+ t cell response against the immunodominant pp65 protein from cytomegalovirus in immune competent individuals. *PLoS One* 2015;10:e0125287.
- Shanfelt TD, Drake MT, Maurer MJ, et al. Vitamin D insufficiency and prognosis in chronic lymphocytic leukemia. *Blood* 2011;117:1492–1498.
- Dewald GW, Brockman SR, Paternoster SF, et al. Chromosome anomalies detected by interphase fluorescence in situ hybridization: Correlation with significant biological features of B-cell chronic lymphocytic leukaemia. *Br J Haematol* 2003;121:287–295.
- Jelinek DF, Tschumper RC, Geyer SM, et al. Analysis of clonal B-cell CD38 and immunoglobulin variable region sequence status in relation to clinical outcome for B-chronic

- lymphocytic leukaemia. *Br J Haematol* 2001;115:854–861.
22. Shanafelt TD, Geyer SM, Bone ND, et al. CD49d expression is an independent predictor of overall survival in patients with chronic lymphocytic leukaemia: A prognostic parameter with therapeutic potential. *Br J Haematol* 2008;140:537–546.
 23. Kilgour AH, Firth C, Harrison R, et al. Seropositivity for CMV and IL-6 levels are associated with grip strength and muscle size in the elderly. *Immun Ageing* 2013;10:33.
 24. Dollard SC, Staras SAS, Amin MM, et al. National prevalence estimates for cytomegalovirus igm and igg avidity and association between high igm antibody titer and low igg avidity. *Clin Vaccine Immunol* 2011;18:1895–1899.
 25. Steininger C, Widhopf GF, Ghia EM, et al. Recombinant antibodies encoded by IGHV1-69 react with pUL32, a phosphoprotein of cytomegalovirus and B-cell superantigen. *Blood* 2012;119:2293–2301.
 26. Hecker M, Qiu D, Marquardt K, et al. Continuous cytomegalovirus seroconversion in a large group of healthy blood donors. *Vox Sang* 2004;86:41–44.
 27. Cannon MJ, Schmid DS, Hyde TB. Review of cytomegalovirus seroprevalence and demographic characteristics associated with infection. *Rev Med Virol* 2010;20:202–213.
 28. Roberts ET, Haan MN, Dowd JB, et al. Cytomegalovirus antibody levels, inflammation, and mortality among elderly Latinos over 9 years of follow-up. *Am J Epidemiol* 2010;172:363–371.
 29. Hadrup SR, Strindhall J, Kollgaard T, et al. Longitudinal studies of clonally expanded CD8 T cells reveal a repertoire shrinkage predicting mortality and an increased number of dysfunctional cytomegalovirus-specific T cells in the very elderly. *J Immunol* 2006;176:2645–2653.
 30. Wikby A, Nilsson B-O, Forsey R, et al. The immune risk phenotype is associated with IL-6 in the terminal decline stage: Findings from the Swedish NONA immune longitudinal study of very late life functioning. *Mech Ageing Dev* 2006;127:695–704.
 31. Trzonkowski P, Mysliwska J, Godlewska B, et al. Immune consequences of the spontaneous pro-inflammatory status in depressed elderly patients. *Brain Behav Immun* 2004;18:135–148.
 32. Adami F, Guarini A, Pini M, et al. Serum levels of tumour necrosis factor-alpha in patients with B-cell chronic lymphocytic leukaemia. *Eur J Cancer* 1994;30A:1259–1263.
 33. Callea V, Morabito F, Luise F, et al. Clinical significance of sIL2R, sCD23, sICAM-1, IL6 and sCD 14 serum levels in B-cell chronic lymphocytic leukemia. *Haematologica* 1996;81:310–315.
 34. Ito S, Pophali P, Co W, et al. CMV reactivation is associated with a lower incidence of relapse after allo-SCT for CML. *Bone Marrow Transplant* 2013;48:1313–1316.
 35. Elmaagacli AH, Steckel NK, Koldehoff M, et al. Early human cytomegalovirus replication after transplantation is associated with a decreased relapse risk: Evidence for a putative virus-versus-leukemia effect in acute myeloid leukemia patients. *Blood* 2011;118:1402–1412.
 36. Wikby A, Johansson B, Olsson J, et al. Expansions of peripheral blood CD8 T-lymphocyte subpopulations and an association with cytomegalovirus seropositivity in the elderly: The Swedish NONA immune study. *Exp Gerontol* 2002;37:445–453.
 37. Vanura K, Rieder F, Kastner MT, et al. Chronic lymphocytic leukemia patients have a preserved cytomegalovirus-specific antibody response despite progressive hypogammaglobulinemia. *PLoS One* 2013;8:e78925.
 38. te Raa GD, Pascutti MF, Garcia-Vallejo JJ, et al. CMV-specific CD8+ T-cell function is not impaired in chronic lymphocytic leukemia. *Blood* 2014;123:717–724.
 39. Riches JC, Davies JK, McClanahan F, et al. T cells from CLL patients exhibit features of T-cell exhaustion but retain capacity for cytokine production. *Blood* 2013;121:1612–1621.

