

## Letter

Kotecha, Dipak

DOI:

[10.1016/j.ijcard.2016.03.107](https://doi.org/10.1016/j.ijcard.2016.03.107)

License:

Creative Commons: Attribution-NonCommercial-NoDerivs (CC BY-NC-ND)

*Document Version*

Peer reviewed version

*Citation for published version (Harvard):*

Kotecha, D 2016, 'Letter: Conflicting and unresolved issue of the prognostic value of atrial fibrillation for chronic heart failure patients - Response', *International Journal of Cardiology*, vol. 214, pp. 516-517.  
<https://doi.org/10.1016/j.ijcard.2016.03.107>

[Link to publication on Research at Birmingham portal](#)

**Publisher Rights Statement:**

Checked for eligibility: 15/04/2016

**General rights**

Unless a licence is specified above, all rights (including copyright and moral rights) in this document are retained by the authors and/or the copyright holders. The express permission of the copyright holder must be obtained for any use of this material other than for purposes permitted by law.

- Users may freely distribute the URL that is used to identify this publication.
- Users may download and/or print one copy of the publication from the University of Birmingham research portal for the purpose of private study or non-commercial research.
- User may use extracts from the document in line with the concept of 'fair dealing' under the Copyright, Designs and Patents Act 1988 (?)
- Users may not further distribute the material nor use it for the purposes of commercial gain.

Where a licence is displayed above, please note the terms and conditions of the licence govern your use of this document.

When citing, please reference the published version.

**Take down policy**

While the University of Birmingham exercises care and attention in making items available there are rare occasions when an item has been uploaded in error or has been deemed to be commercially or otherwise sensitive.

If you believe that this is the case for this document, please contact [UBIRA@lists.bham.ac.uk](mailto:UBIRA@lists.bham.ac.uk) providing details and we will remove access to the work immediately and investigate.

## Accepted Manuscript

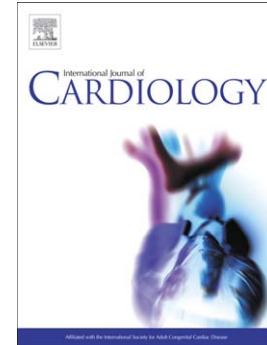
Letter: Conflicting and unresolved issue of the prognostic value of atrial fibrillation for chronic heart failure patients — Response

Dipak Kotecha

PII: S0167-5273(16)30529-0  
DOI: doi: [10.1016/j.ijcard.2016.03.107](https://doi.org/10.1016/j.ijcard.2016.03.107)  
Reference: IJCA 22236

To appear in: *International Journal of Cardiology*

Received date: 11 February 2016  
Accepted date: 19 March 2016



Please cite this article as: Kotecha Dipak, Letter: Conflicting and unresolved issue of the prognostic value of atrial fibrillation for chronic heart failure patients — Response, *International Journal of Cardiology* (2016), doi: [10.1016/j.ijcard.2016.03.107](https://doi.org/10.1016/j.ijcard.2016.03.107)

This is a PDF file of an unedited manuscript that has been accepted for publication. As a service to our customers we are providing this early version of the manuscript. The manuscript will undergo copyediting, typesetting, and review of the resulting proof before it is published in its final form. Please note that during the production process errors may be discovered which could affect the content, and all legal disclaimers that apply to the journal pertain.

**Letter: Conflicting and unresolved issue of the prognostic value of atrial fibrillation for chronic heart failure patients – response**

Dipak Kotecha MBChB PhD MRCP FESC FHEA

University of Birmingham Institute for Cardiovascular Sciences, The Medical School,  
Birmingham, B15 2TT, UK

d.kotecha@bham.ac.uk

We would like to thank Bosseau and Donal for their interest in our paper, and agree with them about the increasing clinical importance of patients with concomitant atrial fibrillation (AF) and heart failure, regardless of ejection fraction (1). Indeed, our analysis confirms poor prognosis in patients suffering from AF and heart failure with preserved ejection fraction (HFpEF) *and* heart failure with reduced ejection fraction (HFrEF). Although we identified higher crude rates of all-cause mortality with AF-HFrEF, incident stroke and heart failure admissions were similar to AF-HFpEF (2).

Clearly these are different patient groups, as we confirmed in our article. Patients with AF-HFpEF were older, with more women and non-ischaemic cardiomyopathy, and this should be taken into account when considering outcomes in each group. We also discussed the issues around adjusted mortality rates, particularly in light of these marked differences in characteristics. As Bosseau and Donal note, if individual patient data were available and pooled for all studies, it is likely this would have reinforced the higher mortality in AF-HFrEF. Unfortunately, cause of death was not consistently reported in the contributing studies.

The point regarding study type is well-taken and further registry data are welcomed.

However, we did perform a sensitivity analysis which showed that the excess mortality in AF-HFrEF compared to AF-HFpEF was also seen in cohort studies (risk ratio 1.21, 95% CI 1.14-1.27), and this result was consistent across all subgroups (see Figure). We believe that our findings are compatible with clinical experience and do not lessen the importance of HFpEF in AF. In contrast, they highlight different treatment priorities compared to patients with concomitant HFrEF. The impact of AF in heart failure patients (and vice-versa) has already been made clear from numerous published reports (3-8). Our aim was rather to clearly define the differences in HFrEF and HFpEF in these patients, ensure better reporting in future studies and focus the mind of clinicians on the considerable impact that AF and heart failure have on quality of life and patient wellbeing (9,10).

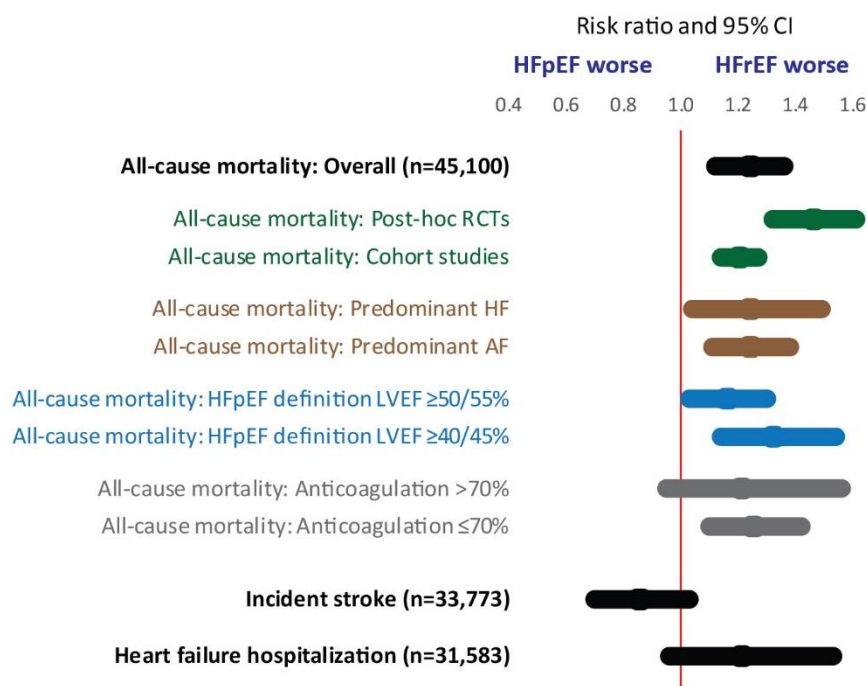


Figure: Summary of meta-analysis results; adapted from Kotecha *et al.* (2)

**The author reports no relationships that could be construed as a conflict of interest.**

**References**

1. Kotecha D, Piccini JP. Atrial fibrillation in heart failure: what should we do? *Eur Heart J* 2015;36:3250-7.
2. Kotecha D, Chudasama R, Lane DA, Kirchhof P, Lip GY. Atrial fibrillation and heart failure due to reduced versus preserved ejection fraction: A systematic review and meta-analysis of death and adverse outcomes. *Int J Cardiol* 2016;203:660-6.
3. Santhanakrishnan R, Wang N, Larson MG et al. Atrial fibrillation begets heart failure and vice versa: Temporal associations and differences in preserved vs. Reduced ejection fraction. *Circulation* 2016;10.1161/CIRCULATIONAHA.115.018614.
4. Vermond RA, Geelhoed B, Verweij N et al. Incidence of Atrial Fibrillation and Relationship With Cardiovascular Events, Heart Failure, and Mortality: A Community-Based Study From the Netherlands. *J Am Coll Cardiol* 2015;66:1000-7.
5. Oluleye OW, Rector TS, Win S et al. History of atrial fibrillation as a risk factor in patients with heart failure and preserved ejection fraction. *Circ Heart Fail* 2014;7:960-6.
6. Kotecha D, Holmes J, Krum H et al. Efficacy of beta blockers in patients with heart failure plus atrial fibrillation: an individual-patient data meta-analysis. *Lancet* 2014;384:2235-43.
7. Zakeri R, Chamberlain AM, Roger VL, Redfield MM. Temporal relationship and prognostic significance of atrial fibrillation in heart failure patients with preserved ejection fraction: a community-based study. *Circulation* 2013;128:1085-93.
8. Olsson LG, Swedberg K, Ducharme A et al. Atrial fibrillation and risk of clinical events in chronic heart failure with and without left ventricular systolic dysfunction: results from the Candesartan in Heart failure-Assessment of Reduction in Mortality and morbidity (CHARM) program. *J Am Coll Cardiol* 2006;47:1997-2004.
9. Fung JW, Sanderson JE, Yip GW, Zhang Q, Yu CM. Impact of atrial fibrillation in heart failure with normal ejection fraction: a clinical and echocardiographic study. *J Card Fail* 2007;13:649-55.
10. Suman-Horduna I, Roy D, Frasure-Smith N et al. Quality of life and functional capacity in patients with atrial fibrillation and congestive heart failure. *J Am Coll Cardiol* 2013;61:455-60.