

Behind closed doors:

Radcliffe, Caroline

DOI:

[10.1177/1748372715619162](https://doi.org/10.1177/1748372715619162)

License:

Other (please specify with Rights Statement)

Document Version

Peer reviewed version

Citation for published version (Harvard):

Radcliffe, C 2015, 'Behind closed doors: the theatrical uncanny and the panoptical viewer in the dramas of Wilkie Collins', *Nineteenth Century Theatre and Film*, vol. 42, no. 1, pp. 80-98.

<https://doi.org/10.1177/1748372715619162>

[Link to publication on Research at Birmingham portal](#)

Publisher Rights Statement:

Behind Closed Doors: The Theatrical Uncanny and the Panoptical Viewer in the Dramas of Wilkie Collins. Caroline Radcliffe. *Nineteenth Century Theatre and Film*. Vol 42, Issue 1, pp. 80 – 98. First published date: May-01-2015. DOI: 10.1177/1748372715619162

General rights

Unless a licence is specified above, all rights (including copyright and moral rights) in this document are retained by the authors and/or the copyright holders. The express permission of the copyright holder must be obtained for any use of this material other than for purposes permitted by law.

- Users may freely distribute the URL that is used to identify this publication.
- Users may download and/or print one copy of the publication from the University of Birmingham research portal for the purpose of private study or non-commercial research.
- User may use extracts from the document in line with the concept of 'fair dealing' under the Copyright, Designs and Patents Act 1988 (?)
- Users may not further distribute the material nor use it for the purposes of commercial gain.

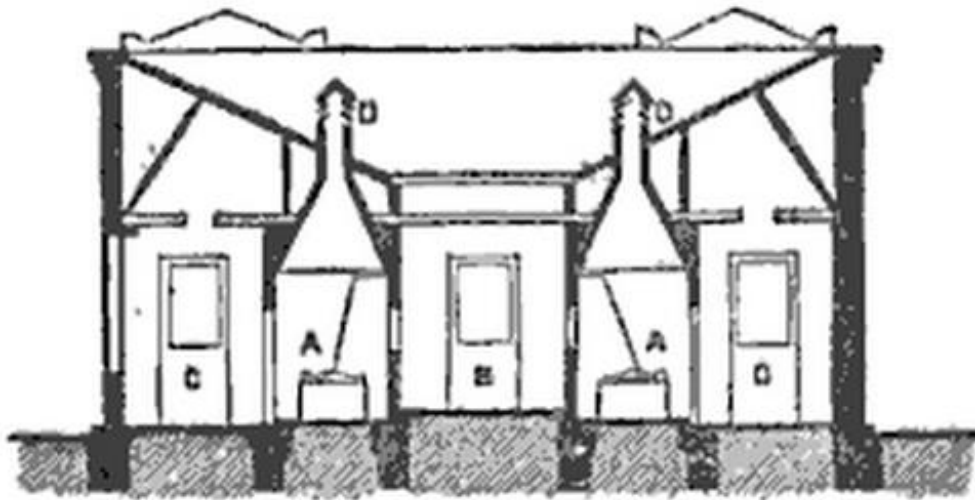
Where a licence is displayed above, please note the terms and conditions of the licence govern your use of this document.

When citing, please reference the published version.

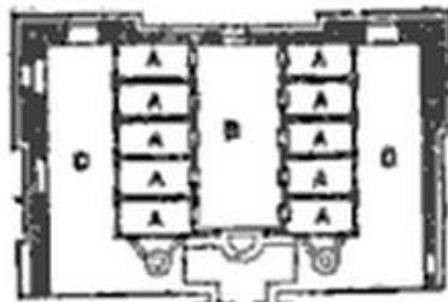
Take down policy

While the University of Birmingham exercises care and attention in making items available there are rare occasions when an item has been uploaded in error or has been deemed to be commercially or otherwise sensitive.

If you believe that this is the case for this document, please contact UBIRA@lists.bham.ac.uk providing details and we will remove access to the work immediately and investigate.



SECTION



PLAN

FIG. 2.—Deadhouse, Frankfort Cemetery.

Plate 1: 'Plan of the Deadhouse, Franfort Cemetery', from Thomas Spencer Baynes, *The Encyclopædia Britannica, A Dictionary of Arts, Sciences and General Literature*, Ninth Edition, Popular-Reprint, (New York: Henry G. Allen and Co. 1888), p. 331.