

# Automatic detection of absence seizures with compressive sensing EEG

Zeng, Ke; Yan, Jiaqing; Wang, Yinghua; Sik, Attila; Ouyang, Gaoxiang; Li, Xiaoli

DOI:

[10.1016/j.neucom.2015.06.076](https://doi.org/10.1016/j.neucom.2015.06.076)

License:

Creative Commons: Attribution-NonCommercial-NoDerivs (CC BY-NC-ND)

*Document Version*

Peer reviewed version

*Citation for published version (Harvard):*

Zeng, K, Yan, J, Wang, Y, Sik, A, Ouyang, G & Li, X 2016, 'Automatic detection of absence seizures with compressive sensing EEG', *Neurocomputing*, vol. 171, pp. 497-502.  
<https://doi.org/10.1016/j.neucom.2015.06.076>

[Link to publication on Research at Birmingham portal](#)

## **Publisher Rights Statement:**

After an embargo period this document is subject to the terms of a Creative Commons Attribution Non-Commercial No Derivatives license

Checked Jan 2016

## **General rights**

Unless a licence is specified above, all rights (including copyright and moral rights) in this document are retained by the authors and/or the copyright holders. The express permission of the copyright holder must be obtained for any use of this material other than for purposes permitted by law.

- Users may freely distribute the URL that is used to identify this publication.
- Users may download and/or print one copy of the publication from the University of Birmingham research portal for the purpose of private study or non-commercial research.
- User may use extracts from the document in line with the concept of 'fair dealing' under the Copyright, Designs and Patents Act 1988 (?)
- Users may not further distribute the material nor use it for the purposes of commercial gain.

Where a licence is displayed above, please note the terms and conditions of the licence govern your use of this document.

When citing, please reference the published version.

## **Take down policy**

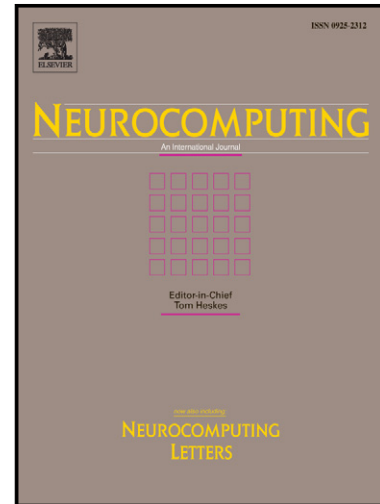
While the University of Birmingham exercises care and attention in making items available there are rare occasions when an item has been uploaded in error or has been deemed to be commercially or otherwise sensitive.

If you believe that this is the case for this document, please contact [UBIRA@lists.bham.ac.uk](mailto:UBIRA@lists.bham.ac.uk) providing details and we will remove access to the work immediately and investigate.

# Author's Accepted Manuscript

Automatic detection of absence seizures with compressive sensing EEG

Ke Zeng, Jiaqing Yan, Yinghua Wang, Attila Sik, Gaoxiang Ouyang, Xiaoli Li



[www.elsevier.com/locate/neucom](http://www.elsevier.com/locate/neucom)

PII: S0925-2312(15)00999-6  
DOI: <http://dx.doi.org/10.1016/j.neucom.2015.06.076>  
Reference: NEUCOM15775

To appear in: *Neurocomputing*

Received date: 21 October 2014  
Revised date: 27 April 2015  
Accepted date: 27 June 2015

Cite this article as: Ke Zeng, Jiaqing Yan, Yinghua Wang, Attila Sik, Gaoxiang Ouyang, Xiaoli Li, Automatic detection of absence seizures with compressive sensing EEG, *Neurocomputing*, <http://dx.doi.org/10.1016/j.neucom.2015.06.076>

This is a PDF file of an unedited manuscript that has been accepted for publication. As a service to our customers we are providing this early version of the manuscript. The manuscript will undergo copyediting, typesetting, and review of the resulting galley proof before it is published in its final citable form. Please note that during the production process errors may be discovered which could affect the content, and all legal disclaimers that apply to the journal pertain.

## Automatic detection of absence seizures with compressive sensing EEG

Ke Zeng<sup>1,2</sup>, Jiaqing Yan<sup>3</sup>, Yinghua Wang<sup>1,2</sup>, Attila Sik<sup>4</sup>, Gaoxiang Ouyang<sup>1,2,\*</sup>, Xiaoli Li<sup>1,2</sup>

<sup>1</sup>State Key Laboratory of Cognitive Neuroscience and Learning & IDG/McGovern Institute for Brain Research, Beijing Normal University, Beijing 100875, China

<sup>2</sup>Center for Collaboration and Innovation in Brain and Learning Sciences, Beijing Normal University, Beijing 100875, China

<sup>3</sup>Institute of Electrical Engineering, Yanshan University, Qinhuangdao 066004, China

<sup>4</sup>College of Medical and Dental Sciences, University of Birmingham, Vincent Drive, Birmingham, B15 2TT, UK

\*Corresponding author

E-mail: ouyang@bnu.edu.cn Tel: 0086-10-58802032

### Abstract

Absence epilepsy, a neurological disorder, is characterized by the recurrence of seizures, which have serious impact on the sufferers' daily life. The seizure detection has a great importance in the diagnosis and therapy of epileptic patients. Visual inspection of the electroencephalogram (EEG) signals for detection of interictal, pre-ictal and ictal activities is a strenuous and time-consuming task due to the huge volumes of EEG segments that have to be studied. In this study, we proposed a novel automatic detection method based on the altered compressibility of EEG during the three states with compressive sensing. To evaluate the proposed method, segments of interictal, pre-ictal and ictal EEG segments (100 segments in each state) were used. Two entropies, namely the Sample Entropy (SE) and the permutation Entropy (PE), and Hurst Index (HI) were extracted respectively from the segments to compare with the proposed method. Significant features were selected using the ANOVA test. After evaluating the performance of the selected features by four classifiers (Decision Tree, K-Nearest Neighbor, Discriminant Analysis, Support Vector Machine) respectively, the results show that the proposed method can achieve the highest accuracy of 76.7%, which is higher than HI (55.3%), sample entropy (71%), and permutation entropy (73%). Hence, the altered compressibility of EEG with CS can act as a good biomarker for distinguish seizure-free, per-seizure and seizure state. In addition, compressive sensing requires less energy but has competitive compression ratio compared to traditional compression techniques, which enables our method to tele-monitoring of epilepsy patients using wireless body-area networks in personalized medicine.

### Keywords:

EEG; Absence Seizure; Compressive Sensing; Permutation Entropy; Classification

## Introduction

Absence epilepsy is a common form of epilepsy, accounting for 10-17% of all cases of epilepsy diagnosed in school-aged children [1, 2]. Absence seizures are short in duration from few seconds to around a minute of impaired consciousness without major motor symptoms and may recur over 100 times a day, which would have significant impact on the educational development of sufferers [3]. Therefore, novel therapeutic approaches are urgently being sought to prevent seizure occurrence. Nowadays, surgery and stimulation methods have recently gained greater prominence and detection of absence seizures is the basis for these methods. Thus it is critical to find biomarkers which can be used to discriminate seizure-free, pre-seizure and seizure state for the patients with epilepsy.

EEG as a non-invasive recording of electrical activity from the scalp has become one of the most useful tools for studying the cognitive processes and the physiology/pathology of the brain, especially the processes involved in absence seizures [4-7]. Epileptic seizure detection techniques for finding the modification of EEG-based indexes can be divided into four categories: time domain, frequency domain, time-frequency domain, and nonlinear methods [8-11]. The time domain method searches for periodic, rhythmic patterns in EEG for the seizure state and provides a measure for rhythmicity [12]. In the frequency domain, seizure detection relies on the differences in the frequency domain characteristics of EEG [13], such as the 3–4 Hz spike-and-wave discharges (SWD) in EEG during the seizure state. Wavelet transform as a typical time-frequency method has also been used to capture and localize transient features like the epileptic spikes [14]. Nonlinear measures, such as sample entropy (SE) [15] and permutation entropy (PE) [16], can quantify the complexity of a time series and be used to track transient dynamics of EEG recordings.

In clinical application, portable EEG systems based on wireless sensors can be used for long term remote monitoring the patients provided they can solve technological problems (miniaturization and energy efficiency) [17]. In order to reduce airtime energy-hungry wireless links, data compression methods are used to compress EEG signal and then transmit. In this paper, the compression problem is viewed from a different perspective: the compressive systems not only reduce the throughput data but also discriminate seizure-free, pre-seizure and seizure state for the patients with epilepsy. A similar study has been applied to distinguish among patients with Alzheimer disease (AD), mild cognitive impaired (MCI) subjects and normal healthy elderly [18, 19]. And their result first showed that the compressibility

can be a good marker to differentiate AD EEG from both MCI and healthy controls.

In this paper, we take full advantage of the altered compressibility of EEG in the transition of brain activities towards an absence seizure with compressive sensing (CS) [20] to discriminate seizure-free, pre-seizure and seizure state. The EEG in the seizure state exhibits three characteristics that make them reliable to be compressed: lower frequency (increase of relative power of delta and theta) [21], decreased complexity (increase of regularity/predictability) [22, 23], and stronger synchronization among multi-channel EEG recordings [24]. The CS adopted here, as an emerging data compression methodology, has superior performance to other conventional data compression methods such as wavelet compression in compressing non-sparse EEG signals [25]. Besides, compared to wavelet compression, CS can reduce energy consumption while achieving competitive data compression ratio [26], which enables our method for tele-monitoring patients with epilepsy through wireless body-area networks in personalized medicines.

The rest of the paper is organized as follows. Section II briefly introduces the CS methodology. Section III presents the experiments and results. The last section discusses the results and concludes the paper.

## Methods

Compressive sensing (also known as compressed sensing) [20] is a signal processing technique for efficiently acquiring and reconstructing a signal. This method takes advantage of the signal's sparseness or compressibility in some domain, allowing the signal to be represented by relatively few measurements in that domain. This section mainly discusses the key theoretical concepts of CS method.

### *Signal sparsity*

Using  $N \times N$  basis matrix (also known as dictionary matrix)  $\Psi = [\psi_1 | \psi_2 \dots | \psi_N]$  with the vectors  $\{\psi_i\}$  as columns, a one-dimensional discrete-time signal  $\mathbf{x}$  of length  $N$  (viewed as an  $N \times 1$  column vector) can be expressed as

$$\mathbf{x} = \Psi \mathbf{s} = \sum_{i=1}^N s_i \psi_i$$

where  $s$  is the  $N \times 1$  column vector of weighting coefficients. Clearly,  $x$  and  $s$  are equivalent representations of the signal, with  $x$  in the time and  $s$  in the  $\Psi$  domain.

The signal  $x$  is  $K$ -sparse if it is a linear combination of only  $K$  basis vectors, which means that only  $K$  of the  $s_i$  coefficients in (1) are nonzero and  $(N-K)$  are zero. In the practical application, signal  $x$  is compressible if  $s$  in the formula (1) has just a few large coefficients and many small coefficients.

### Signal compression and reconstruction

The compressive sensing employs non-adaptive linear projections that preserve the structure of the signal, and the signal is then reconstructed from these projections using an optimization process [20].

In the compression system, a signal of length  $N$ , denoted by  $x \in \mathbb{R}^{N \times 1}$ , is compressed by CS with a full row-rank matrix, denoted by  $\Phi \in \mathbb{R}^{M \times N}$  ( $M \ll N$ ,  $\text{Rank}(\Phi) = M$ ) as follows:

$$y = \Phi x$$

where  $y$  is the compressed data, and  $\Phi$  is called the measurement matrix, which is set in advance. CS algorithms use the compressed signal  $y$  and the sensing matrix  $\Phi$  to reconstruct the original signal. The accuracy of the reconstructed signal directly relies on the key assumption that the original signal is  $K$ -sparse ( $K \ll N$ ). When this assumption does not hold, such as EEG, we can seek a dictionary matrix, denoted by  $\Psi \in \mathbb{R}^{N \times N}$ , so that  $x$  is  $K$ -sparse ( $K \ll N$ ) in this  $\Psi$  domain. Then the CS model can be re-written as

$$y = \Phi \Psi s = \Theta s$$

where  $\Theta = \Phi \Psi \in \mathbb{R}^{M \times N}$ .

In the reconstruction system, CS algorithms can firstly recover  $s$  using  $y$  and  $\Theta$ , and then recover the original signal  $x$  by  $x = \Psi s$ . While the compression system is largely

underdetermined ( $M \ll N$  in (2) and (3)), there is an infinite number of  $\mathbf{x}$  for a given  $\mathbf{y}$ . However, since the signal  $\mathbf{x}$  we wish to reconstruct is  $K$ -sparse, CS algorithms thus aim to find the sparsest solution. This corresponds to solve the following  $\ell_0$  optimization problem [27]:

$$\min_s s_0 \text{ subject to } \mathbf{y} = \Theta \mathbf{s} \quad (4)$$

where the  $\ell_0$  norm  $s_0$  counts the number of non-zero entries in  $\mathbf{s}$ .

#### *Incoherent Measurement matrix*

The minimum acceptable  $M$  that allows perfect reconstruction of signal  $\mathbf{x}$  is not only related to the sparsity  $K$  of  $\mathbf{x}$  in the dictionary matrix  $\Psi$ , but also to the coherence  $\mu$  between  $\Phi$  and  $\Psi$ . The coherence measures the largest correlation between any two elements of  $\Phi$  and  $\Psi$ , which is defined as follows:

$$\mu(\Phi, \Psi) = \sqrt{N} \max_{1 \leq i, j \leq N} |\phi_i, \phi_j| \quad (5)$$

And if

$$M \geq C^2 \mu^2(\Phi, \Psi)^2 K^2 \log N$$

for some positive constant  $C$ , the solution to (6) is exact with overwhelming probability. Therefore, the smaller the coherence, the smaller the value of  $M$  can be.

In order to construct an ideal measurement matrix  $\Phi$ , one should have a hard search based on the dictionary matrix  $\Psi$ . Fortunately, incoherence can be guaranteed with high probability by selecting  $\Phi$  as a random matrix [20]. In practical application, the random matrix  $\Phi$  is often generated by independent and identically distributed Gaussian random variables or by Bernoulli random variables [28].

## Experiments and Results

### *EEG recordings*

EEG recordings were obtained from nine patients (five males and four females) aged from 8 to 21 years old with absence epilepsy. The study protocol had taken consent from the ethics committee of Peking University People's Hospital and the patients had signed informed consent that their clinical data might be used and published for research purposes. The EEG data were recorded according to the sites defined by the standard 10-20 international system at a sampling rate of 256 Hz by the Neurofile NT digital video EEG system. Nineteen electrodes were used and the impedance levels were set at less than 5 k $\Omega$  and they were filtered with a frequency band of 0.5 and 35 Hz which include the relevant bands of absence EEG recordings.

For the investigation in present work, interictal, pre-ictal, and ictal EEG epochs were selected and dissected from seizure-free, pre-seizure and seizure states respectively. The timing of onset and offset in spike-wave discharges (SWDs) was identified by an epilepsy neurologist, and these SWDs were defined as large-amplitude rhythmic 3-4 Hz discharges with typical spike-wave morphology lasting  $>1.0$  s [29]. Just 2 seconds of EEG recordings were dissected for our study because 1) it is clinically difficult to obtain long EEG recordings during absence seizures; and 2) the duration of the pre-seizure state is only about a few seconds as determined from the rat model [30]. The artifact EEG epochs were rejected by the epilepsy neurologist and only the artifact-free epochs were used to analyze. At last, each state contains 100 EEG epochs of 2s duration.

### *Characteristics of Absence EEG*

This section mainly investigates the characteristics of inter-ictal, pre-ictal and ictal EEG and pays the way for distinguishing three states by our proposed method.

#### (1) Slow effect of absence EEG

To investigate the spectral power distribution of EEG in these three seizure states, relative spectral power is computed by for four frequency bands: delta (1-4 Hz), theta (4-8 Hz), alpha (8-12 Hz), and beta (12-30 Hz). For a time course  $x(t)$ , power spectral density is obtain by the Fast Fourier Transform and the spectral power ( $P_{band}$ ) in each frequency band can be calculated by integrating the power in the



corresponding band from the power spectral density. The relative band spectral power can be calculated as  $P_{band}/P_{all}$ , where  $P_{all}$  is the spectral power in the band of 1-30 Hz.

The relative spectral power in four frequency bands for inter-ictal, pre-ictal and ictal EEG were the average result of all channels across all subjects and showed in Fig.1 (A). As illustration in the Fig.1 (A), the delta relative power in the ictal EEG occupying about 78% of the total power is the overwhelmingly dominant in the frequency band of 1-30 Hz, which is obviously higher than the delta relative power in both interictal (38%) and pre-ictal (43%) EEG. On the contrary, relative powers of ictal EEG in other band are obvious lower than both pre-ictal and interictal EEG. The one-way ANOVA tests also show that the pre-ictal EEG has significant higher delta ( $F(1,198) = 22.6, p < 0.05$ ) and theta ( $F(1,198) = 18.9, p < 0.05$ ) relative power than interictal EEG. And the beta relative power in the pre-ictal EEG is significant lower than interictal EEG ( $F(1,198) = 163, p < 0.05$ ). In other words, a 'global' spectral power shifts to lower frequencies from interictal to pre-ictal and to the ictal state in turn.

## (2) Enhanced sparsity of absence EEG

Continuous wavelet transform is adopted to analyze the time-frequency feature of the inter-ictal, pre-ictal and ictal EEG. The db4 is used here and the time-frequency distributions of the wavelet coefficients for representative channel EEG in three states are illustrated in the central plot of Fig. 1 (B), (C) (D) respectively. All the representative EEG segments are selected from channel C3 for illustration as this channel has shown significant different among the three states in our pervious study [23]. Time evolution of the original EEG is showed below the time-frequency plot. The box-plots on the left of time-frequency plots are the power spectral density (PSD) of the original signal.

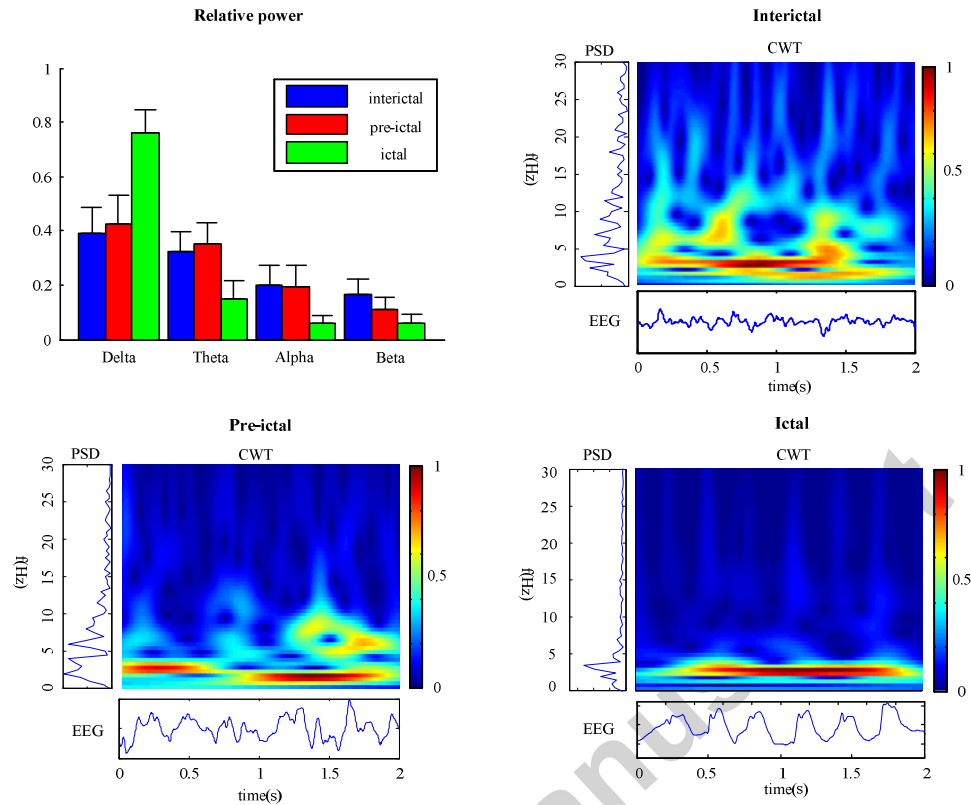


Fig.1. Characteristics of interictal, pre-ictal and ictal EEG. (A) The relative power of four frequency bands for the three states. (B), (C) and (D) are the time-frequency plots for three EEGs in the three seizure states respectively.

From the time-frequency plots in Fig. 1, it is easily seen that most of the power in pre-ictal and ictal EEG is concentrated in low-frequency bands and time-frequency plots of these two states are highlighted in the presence of characteristic “bumps” [31]. Therefore, the number of significant wavelet coefficients reduces in both pre-ictal and ictal EEG, which also means that the sparsity of these two states based on wavelet enhances relative to the interictal EEG. To quantify the sparsity of three states of EEG, a thresholding-based DWT compression algorithm is adopted [32], which just retains the significant wavelet coefficients above some presetting threshold to reconstruct the original signal. When the normal mean square error between the original signal and the reconstructed signal is 0.1, the number of wavelet coefficients of interictal, pre-ictal and ictal EEG to be retained are  $(45.72 \pm 3.42)\%$ ,  $(38.9 \pm 5.55)\%$  and  $(29.0 \pm 4.40)\%$  respectively. Thus, the sparsity of EEG largely varies among those three states as hypothesized (ANOVA test,  $p < 0.05$ ).

### *Compressibility of Absence EEG with CS*

Compressive sensing is applied to analyzing the compressibility of interictal, pre-ictal and ictal EEG. We choose the Gabor wavelet dictionary (Gaussian envelope sinusoids) as the dictionary matrix [33] and the sparse binary matrix generated by Bernoulli random variables as the measurement matrix [34]. Block Sparse Bayesian Learning (BSBL) algorithm [17] is adopted to reconstruct the original signal, which has been shown good performance for the non-sparse EEG. We adopt two performance metrics to quantify the compressibility (recovery quality) of the EEG during different states. The first one is the Normalized Mean Square Error (NMSE), defined as  $\frac{\|x - \hat{x}\|_2^2}{\|x\|_2^2}$ , where  $\hat{x}$  is the reconstruction of original signal  $x$ . And the second one is the Structure SIMilarity (SSIM) [35], which may be a better performance metric than the NMSE to measures the similarity between structured signals (such as EEG). The range of SSIM metric is between -1 and 1, and higher SSIM means better reconstruction quality.

To effectively investigate the compressibility of EEG in three states, the compression ratio ( $cr$ ) is set in the range from 2 to 10, and the recovery quality of interictal, pre-ictal and ictal EEG measured by NMSE and SSIM with the increase of compression ratio is illustrated in the Fig.2. As we can see, the compression loss of interictal EEG increases at the fastest rate with the increase of compression ratio, and the slowest is the ictal EEG, and the pre-ictal EEG is always in the middle. In other words, both the NMSE and SSIM metrics show that the ictal EEG is the most compressible, followed by the pre-ictal EEG and then the inter-ictal EEG. Hence, there exists altered compressibility of EEG in the transition of brain activities towards an absence seizure with compressive sensing.

Then, in order to investigate whether these observed differences are significant, the one-way ANOVA test is performed for EEG compressibility distributions over the three states in the compression ratio range from 2 to 10. The statistical test shows that all the compressibility distributions over the three states are significantly different at the level of  $p < 0.01$  and the most significant is at the compression ratio 7 for both NMSE ( $F(2, 297) = 298, p < 0.001$ ) and SSIM ( $F(2, 297) = 332, p < 0.001$ ). In addition, the ANOVA test to all pairwise comparisons between the compressibility of the three states for each compression ratio suggests that the average compressibility for the pre-ictal EEG is significantly lower than ictal EEG, but significantly higher than interictal EEG.

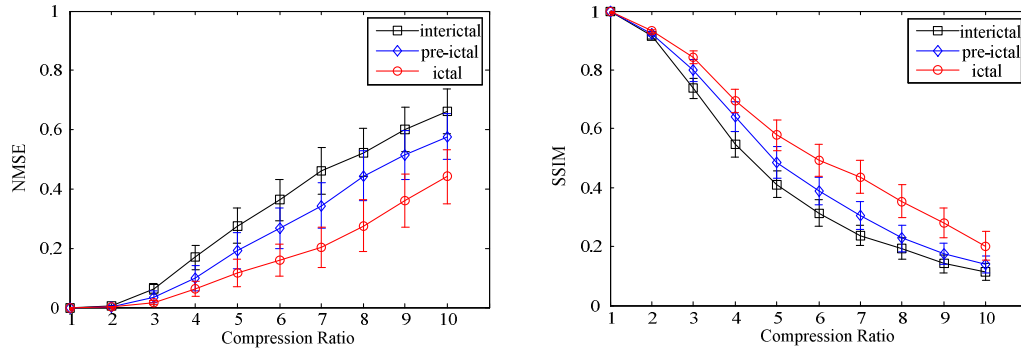


Fig. 2. Compressibility of interictal, pre-ictal and ictal EEG measured by NMSE and SSIM with the increase of compression ratio.

#### *Classification of Absence EEG*

As the compressibility is significantly different among the interictal, pre-ictal and ictal EEG, we can choose a proper compression ratio to compress the EEG data and distinguish the corresponding state based on their different compressibility. From the section of the above, we can find that the difference among the compressibility of the three kinds of EEG reaches the most significantly state at compression rate 7 for both NMSE and SSIM measures. So the compression ratio 7 is chosen as the best candidate for compressive sensing to distinguish the three kinds of EEG. We defined here the compressibility of EEG measured by NMSE and SSIM with compressive sensing as CS-NMSE and CS-SSIM respectively.

To evaluate the distinguish ability of the altered EEG compressibility for the three states, we test our proposed features against other dominant features, including hurst index (HI) [36], sample entropy (SE) [15] and permutation entropy (PE) [16], in terms of seizures detection. To classify the EEG of three states with these features, we use four classifiers namely decision tree (DT) [37], K-nearest neighbor (KNN) [38], discriminant analysis (DA) [39], and support vector machine (SVM) [40]. The value of K in KNN is 5. The type of DA is quadratic. And the SVM type is nu-support vector classification (nu-SVC). In order to develop robust classifiers, we choose the ten-fold cross validation data resampling technique for training and testing the classifiers. The classification accuracy is used as a metric for evaluating the performance of these approaches.

Table 1 shows the results of accuracy recorded by the four classifiers using all the 5 features. Our results show that both CS-NMSE and CS-SSIM have competitive distinguish ability, which are remarkable superior to hurst index and outperform the sample entropy and the permutation entropy. In addition, we also can find that the discriminant analysis classifier performs better than the other classifiers by registering accuracy 74.3% for CS-NMSE and 76.7% for CS-SSIM, both of which are higher than HI (55.3%), sample entropy (71%), and permutation entropy (73%).

Table 1. The accuracy value recorded by four classifiers using all five features for training and testing.

	HI	SE	PE	CS-NMSE	CS-SSIM
<b>DT</b>	(51±5.0)%	(67±3.7)%	(69.3±3.1)%	(70.5±3.0)%	(71.8±2.8)%
<b>KNN</b>	(50.7±4.1)%	(68.7±3.6)%	(70.3±2.5)%	(71.7±2.7)%	(72.1±2.3)%
<b>DA</b>	(55.3±3.3)%	(71±2.8)%	(73±2.1)%	(74.3±2.6)%	(76.7±2.3)%
<b>SVM</b>	(51.6±4.7)%	(65.5±3.4)%	(71.3±2.2)%	(72.2±2.9)%	(74.3±2.5)%

## Discussion and conclusion

The EEG signal is a measure of the summed activities of approximately 1—100 million neurons lying in the vicinity of the recording electrode. Since it may provide insight into the dynamics of the brain [41], various methods have been proposed to understand the mechanisms of absence seizure with EEG recordings. In this work, the spectral power distributions of EEG show that a ‘global’ spectral power shifts to lower frequencies from interictal to pre-ictal and to the ictal state in turn, which is in agreement with earlier studies that slow effect occurs in both before and during the ictal states [42]. And the investigation of compressibility of EEG exhibits enhanced compressibility characteristics from interictal to pre-ictal and to ictal EEG. Combined with sparsity analysis EEG with wavelet, we can find that the compressibility of EEG are significantly correlated with low frequency relative power (delta and theta) and inversely correlated with high-frequency relative power (beta). Our previous analysis about dynamic changes of absence EEG by PE has demonstrated that pre-ictal EEG exhibit lower complexity than interictal EEG, but higher than that in ictal EEG [22, 23]. The reduction of complexity from the seizure-free state to seizure state is also the result of the well-known slowing effect of EEG [43]. Therefore, there is also a significant correlation between the complexity modification and altered compressibility in the EEG signal when the brain switches from normal to absence seizure state.

The altered EEG compressibility was then used as feature to classify EEG in the three states. To evaluate the distinguish ability of EEG compressibility, we compared it with other dominant features, including hurst index, sample entropy and permutation entropy, in terms of seizures detection. Four classifiers namely decision tree, K-nearest neighbor, discriminant analysis, and support vector machine were used to classify the three states with these features. All the results of four classifiers consistently show that both CS-NMSE and CS-SSIM have competitive distinguish ability, which are remarkable superior to hurst index and outperform sample entropy and permutation entropy. Hence, we can conclude that the altered compressibility of EEG with CS would act as a good biomarker for distinguish seizure-free, per-seizure and seizure state.

In addition, compressive sensing requires less energy but has competitive compression ratio compared to traditional compression techniques [17], which enables our method to tele-monitoring of epilepsy patients using wireless body-area networks in personalized medicine. Of course, the results here described are limited to the available database and it is the intent of future studies to test our method with a larger database and cross-validate its performance with multiple independent databases. In future works, in order to assess the robust of the proposed method, we will investigate the effect of artifact on our method for detecting the absence seizures. And compressive sensing based on multivariate technique [44] will also be used to optimize our method, which can recover multichannel signals with both the temporal correlation within each channel signal and inter-channel correlation among different channel signals.

## Acknowledgements

The authors would like to thank the Comprehensive Epilepsy Center (Peking University People's Hospital, China) for kindly providing database which we used to test and compare the performance of current methods. We would like to thank Dr. Xianzeng Liu (Service of Comprehensive Epilepsy Center, Peking University People's Hospital) for assistance with data management and valuable clinical discussions.

This work was supported by The National Natural Science Foundation of China (grant Nos. 61025019, 61105027 and 61311130139), Beijing Natural Science Foundation (4143063), the Fundamental Research Funds for the Central Universities, and Medical Research Council (G1001235).

## Conflict of Interest Statement

None Declared.

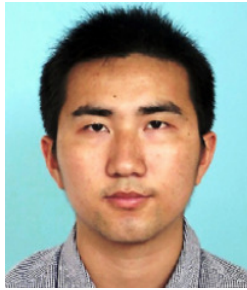
## References

- [1] A.T. Berg, S. Shinnar, S.R. Levy, F.M. Testa, S. Smith-Rapaport, B. Beckerman, How Well Can Epilepsy Syndromes Be Identified at Diagnosis? A Reassessment 2 Years After Initial Diagnosis, *Epilepsia*, 41 (2000) 1269-1275.
- [2] P. Jallon, P. Loiseau, J. Loiseau, G.C.C.A. Re, Newly diagnosed unprovoked epileptic seizures: Presentation at diagnosis in CAROLE study, *Epilepsia*, 42 (2001) 464-475.
- [3] B.D. Killory, X. Bai, M. Negishi, C. Vega, M.N. Spann, M. Vestal, J. Guo, R. Berman, N. Danielson, J. Trejo, D. Shisler, E.J. Novotny, R.T. Constable, H. Blumenfeld, Impaired attention and network connectivity in childhood absence epilepsy, *Neuroimage*, 56 (2011) 2209-2217.
- [4] T.G. Selvaraj, B. Ramasamy, S.J. Jeyaraj, E.S. Suvishamuthu, EEG Database of Seizure Disorders for Experts and Application Developers, *Clinical EEG and neuroscience*, 45 (2014) 304-309.
- [5] Y.Q. Kuang, B. Kong, T. Yang, L. Cheng, J.W. Gu, H.T. Zhou, M. Lu, C.M. Ran, L.L. Jiang, J.M. Cheng, Y. Ma, S.H. Dang, Epileptiform Discharges and Frontal Paroxysmal EEG Abnormality Act as Predictive Marker for Subsequent Epilepsy in Children with Complex Febrile Seizures, *Clinical EEG and neuroscience*, 45 (2014) 299-303.
- [6] X.W. Wang, D. Nie, B.L. Lu, Emotional state classification from EEG data using machine learning approach, *Neurocomputing*, 129 (2014) 94-106.
- [7] L. He, Y. Hu, Y. Li, D. Li, Channel selection by Rayleigh coefficient maximization based genetic algorithm for classifying single-trial motor imagery EEG, *Neurocomputing*, 121 (2013) 423-433.
- [8] P. Sharma, Y.U. Khan, O. Farooq, M. Tripathi, H. Adeli, A Wavelet-Statistical Features Approach for Nonconvulsive Seizure Detection, *Clinical EEG and neuroscience*, 45 (2014) 274-284.
- [9] M.Z. Parvez, M. Paul, Epileptic seizure detection by analyzing EEG signals using different transformation techniques, *Neurocomputing*, 145 (2014) 190-200.
- [10] Y. Kumar, M.L. Dewal, R.S. Anand, Epileptic seizure detection using DWT based fuzzy approximate entropy and support vector machine, *Neurocomputing*, 133 (2014) 271-279.
- [11] J. Zhang, J. Zou, M. Wang, L. Chen, C. Wang, G. Wang, Automatic detection of interictal epileptiform discharges based on time-series sequence merging method, *Neurocomputing*, 110 (2013) 35-43.
- [12] A. Liu, J.S. Hahn, G.P. Heldt, R.W. Coen, Detection of Neonatal Seizures through Computerized EEG Analysis, *Electroen Clin Neuro*, 82 (1992) 30-37.
- [13] J. Gotman, D. Flanagan, J. Zhang, B. Rosenblatt, Automatic seizure detection in the newborn: methods and initial evaluation, *Electroen Clin Neuro*, 103 (1997) 356-362.
- [14] H. Adeli, Z. Zhou, N. Dadmehr, Analysis of EEG records in an epileptic patient using wavelet transform, *J Neurosci Meth*, 123 (2003) 69-87.
- [15] U.R. Acharya, F. Molinari, S.V. Sree, S. Chattopadhyay, K.H. Ng, J.S. Suri, Automated diagnosis of epileptic EEG using entropies, *Biomedical Signal Processing and Control*, 7 (2012) 401-408.

- [16] G.X. Ouyang, C.Y. Dang, X.L. Li, Multiscale Entropy Analysis of Eeg Recordings in Epileptic Rats, *Biomed Eng-App Bas C*, 21 (2009) 169-176.
- [17] Z. Zhang, T.P. Jung, S. Makeig, B.D. Rao, Compressed Sensing of EEG for Wireless Telemonitoring With Low Energy Consumption and Inexpensive Hardware, *IEEE Transactions on Biomedical Engineering*, 60 (2013) 221-224.
- [18] D. Labate, F. La Foresta, I. Palamara, G. Morabito, A. Bramanti, Z. Zhang, F.C. Morabito, EEG Complexity Modifications and Altered Compressibility in Mild Cognitive Impairment and Alzheimer's Disease, 23rd Italian Workshop on Neural Networks (WIRN 2013), Salerno, Italy, May 23-25, 2013).
- [19] F.C. Morabito, D. Labate, A. Bramanti, F. La Foresta, G. Morabito, I. Palamara, H.Szu, Enhanced Compressibility of EEG Signal in Alzheimer's Disease Patients, *IEEE Sens J*, 13 (2013) 3255-3262.
- [20] E.J. Candes, M.B. Wakin, An introduction to compressive sampling, *IEEE Signal Processing Magazine*, 25 (2008) 21-30.
- [21] H. Blumenfeld, M. Rivera, K.A. McNally, K. Davis, D.D. Spencer, S.S. Spencer, Ictal neocortical slowing in temporal lobe epilepsy, *Neurology*, 63 (2004) 1015-1021.
- [22] X.L. Li, G.X. Ouyang, D.A. Richards, Predictability analysis of absence seizures with permutation entropy, *Epilepsy Res*, 77 (2007) 70-74.
- [23] G.X. Ouyang, J. Li, X.Z. Liu, X.L. Li, Dynamic characteristics of absence EEG recordings with multiscale permutation entropy analysis, *Epilepsy Res*, 104 (2013) 246-252.
- [24] X.L. Li, D. Cui, P. Jiruska, J.E. Fox, X. Yao, J.G.R. Jefferys, Synchronization measurement of multiple neuronal populations, *J Neurophysiol*, 98 (2007) 3341-3348.
- [25] Z. Zhang, B.D. Rao, Extension of SBL Algorithms for the Recovery of Block Sparse Signals With Intra-Block Correlation, *IEEE Transactions on Signal Processing*, 61 (2013) 2009-2015.
- [26] S. Fauvel, R.K. Ward, An Energy Efficient Compressed Sensing Framework for the Compression of Electroencephalogram Signals, *Sensors-Basel*, 14 (2014) 1474-1496.
- [27] D.L. Donoho, Compressed Sensing, *IEEE Transactions on Information Theory* 52 (2006) 1289-1306.
- [28] E.J. Candes, T. Tao, Decoding by linear programming, *IEEE Transactions on Information Theory*, 51 (2005) 4203-4215.
- [29] V. Crunelli, N. Leresche, Childhood absence epilepsy: Genes, channels, neurons and networks, *Nat Rev Neurosci*, 3 (2002) 371-382.
- [30] G.X. Ouyang, X.L. Li, C.Y. Dang, D.A. Richards, Using recurrence plot for determinism analysis of EEG recordings in genetic absence epilepsy rats, *Clin Neurophysiol*, 119 (2008) 1747-1755.
- [31] F.B. Vialatte, J. Sole-Casals, J. Dauwels, M. Maurice, A. Cichocki, Bump time-frequency toolbox: a toolbox for time-frequency oscillatory bursts extraction in electrophysiological signals, *Bmc Neurosci*, 10 (2009).
- [32] K. Srinivasan, J. Dauwels, M.R. Reddy, Multichannel EEG Compression: Wavelet-Based Image and Volumetric Coding Approach, *Ieee J Biomed Health*, 17 (2013) 113-120.
- [33] M. Mohsina, A. Majumdar, Gabor based analysis prior formulation for EEG signal reconstruction, *Biomedical Signal Processing and Control*, 8 (2013) 951-955.
- [34] H. Mamaghanian, N. Khaled, D. Atienza, P. Vandergheynst, Compressed Sensing for Real-Time Energy-Efficient ECG Compression on Wireless Body Sensor Nodes, *IEEE Transactions on Biomedical Engineering*, 58 (2011) 2456-2466.
- [35] Z. Wang, A.C. Bovik, Mean Squared Error: Love It or Leave It? A new look at signal fidelity measures, *IEEE Signal Processing Magazine*, 26 (2009) 98-117.



- [36] H.E. Hurst, Long-Term Storage Capacity of Reservoirs, *T Am Soc Civ Eng*, 116 (1951) 770-799.
- [37] D.K. Wedding, Discovering knowledge in data: an introduction to data mining, *Inform Process Manag*, 41 (2005) 1307-1309.
- [38] N.S. Altman, An Introduction to Kernel and Nearest-Neighbor Nonparametric Regression, *Am Stat*, 46 (1992) 175-185.
- [39] T. Sapatinas, Discriminant analysis and statistical pattern recognition, *J R Stat Soc a Stat*, 168 (2005) 635-636.
- [40] C.C. Chang, C.J. Lin, LIBSVM: A Library for Support Vector Machines, *Acm T Intel Syst Tec*, 2 (2011) 27.
- [41] M. Mehta, Rhythms of the brain, *Nature*, 446 (2007) 27-27.
- [42] B. Clemens, G. Szigeti, Z. Barta, EEG frequency profiles of idiopathic generalised epilepsy syndromes, *Epilepsy Res*, 42 (2000) 105-115.
- [43] J. Dauwels, K. Srinivasan, M.R. Reddy, T. Musha, F.B. Vialatte, C. Latchoumane, J. Jeong, A. Cichocki, Slowing and loss of complexity in Alzheimer's EEG: Two sides of the same coin?, *International Journal of Alzheimer's Disease*, 2011 (2011) 539621.
- [44] Z. Zhang, T.P. Jung, S. Makeig, Z. Pi, B.D. Rao, Spatiotemporal Sparse Bayesian Learning with Applications to Compressed Sensing of Multichannel Physiological Signals, *IEEE Transactions on Neural Systems and Rehabilitation Engineering*, 22 (2014) 1186-1197 .



**Ke Zeng** received the B.Sc. degree and the M.S. degree in computer science from the China University of Geosciences, China, in 2011 and 2013 respectively. He is currently a Ph.D. candidate with the School of Brain and Cognitive Sciences, Beijing Normal University, Beijing, China. His research interests include neuroinformatics and signal processing.



**Jiaqing Yan** received the B.S. degree and the M.S. degree in automation from Yanshan University,

Qinhuangdao, China. He is currently a Ph.D. candidate with the Institute of Electrical Engineering, Yanshan University. His research interests include neural engineering and signal processing.



**Yinghua Wang** received the B.S degree in automation and M.S. degree in control theory and control engineering from the Institute of Electrical Engineering, Yanshan University, Qinhuangdao, Hebei, China. He is currently a Ph.D. candidate with the School of Brain and Cognitive Sciences, Beijing Normal University, Beijing, China. His research interests include neural engineering, signal processing and anaesthesia.



**Attila Sik** received the M.S. in Biology and Chemistry from the Kossuth University and Ph.D. degree in Neuroscience from Semmelweis Medical School with summa cum laude, Hungary, in 1991 and 1997 respectively. He is currently a professor of Cellular Neuroscience with the School of Clinical and Experimental Medicine, College of Medical and Dental Sciences, University of Birmingham, UK. He had worked with the Hungarian Academy of Sciences, Rutgers University, Laval University and McGill University. He uses numerous classical and innovative techniques to unveil how neurons are connected and function together. His main interest is in the hippocampus and epilepsy but also published several articles and still studies other brain regions which are involved in diverse neurological disease for example Parkinson's disease or schizophrenia.



**Gaoxiang Ouyang** received the B.S. in automation and the M.S. in control theory and control engineering both from Yanshan University, China, in 2002 and 2004 respectively, and the Ph.D. degree at the Department of Manufacturing Engineering, City University of Hong Kong in 2010. Dr. Ouyang is an associate professor in the School of Brain and Cognitive Sciences at Beijing Normal University, Beijing, China. His research interests are bio-signal analysis, neural engineering, and dynamics system. He has published numerous refereed international journals and conference papers.



**Xiaoli Li** received the B.S. degree and the M.S. degree from the Kunming University of Science and Technology, and the Ph.D. degree from the Harbin Institute of Technology, China, all in mechanical engineering. He is currently a professor and vice director with the National Key Laboratory of Cognitive Neuroscience and Learning, Beijing Normal University, China. He had worked with the City University of Hong Kong, Hannover University, Germany, Chinese University of Hong Kong, University of Birmingham, and Yanshan University, China. His research interests include neural engineering, computational intelligence, signal processing and data analysis, monitoring system, manufacturing system.