

A survey of dynamical complexity in a mean-field nonlinear model of human EEG

Frascoli, Federico; van Veen, Lennaert; Bojak, Ingo; Dafilis, Mathew; Liley, David T J

DOI:

[10.1186/1471-2202-10-S1-P285](https://doi.org/10.1186/1471-2202-10-S1-P285)

License:

Creative Commons: Attribution (CC BY)

Document Version

Publisher's PDF, also known as Version of record

Citation for published version (Harvard):

Frascoli, F, van Veen, L, Bojak, I, Dafilis, M & Liley, DTJ 2009, A survey of dynamical complexity in a mean-field nonlinear model of human EEG. in *BMC Neuroscience: Eighteenth Annual Computational Neuroscience Meeting: CNS*2009*. vol. 10 (Suppl 1), P285, Eighteenth Annual Computational Neuroscience Meeting, Berlin, Germany, 18/07/09. <https://doi.org/10.1186/1471-2202-10-S1-P285>

[Link to publication on Research at Birmingham portal](#)

General rights

Unless a licence is specified above, all rights (including copyright and moral rights) in this document are retained by the authors and/or the copyright holders. The express permission of the copyright holder must be obtained for any use of this material other than for purposes permitted by law.

- Users may freely distribute the URL that is used to identify this publication.
- Users may download and/or print one copy of the publication from the University of Birmingham research portal for the purpose of private study or non-commercial research.
- User may use extracts from the document in line with the concept of 'fair dealing' under the Copyright, Designs and Patents Act 1988 (?)
- Users may not further distribute the material nor use it for the purposes of commercial gain.

Where a licence is displayed above, please note the terms and conditions of the licence govern your use of this document.

When citing, please reference the published version.

Take down policy

While the University of Birmingham exercises care and attention in making items available there are rare occasions when an item has been uploaded in error or has been deemed to be commercially or otherwise sensitive.

If you believe that this is the case for this document, please contact UBIRA@lists.bham.ac.uk providing details and we will remove access to the work immediately and investigate.

Poster presentation

Open Access

A survey of dynamical complexity in a mean-field nonlinear model of human EEG

Federico Frascoli*¹, Lennaert Van Veen², Ingo Bojak³, Mathew P Dafilis¹ and David TJ Liley

Address: ¹Brain Sciences Institute (BSI), Swinburne University of Technology, P.O. Box 218, Victoria 3122, Australia, ²Department of Mathematics and Statistics, Faculty of Arts and Sciences, Concordia University, 1455 de Maisonneuve Blvd. W., H3G 1M8 Montreal, Quebec, Canada and ³Donders Institute for Brain, Cognition and Behaviour, Centre for Neuroscience, Radboud University Nijmegen (Medical Centre), P.O. Box 9101/126, 6500 HB Nijmegen, The Netherlands

Email: David TJ Liley - dliley@swin.edu.au

* Corresponding author

from Eighteenth Annual Computational Neuroscience Meeting: CNS*2009
Berlin, Germany. 18–23 July 2009

Published: 13 July 2009

BMC Neuroscience 2009, **10**(Suppl 1):P285 doi:10.1186/1471-2202-10-S1-P285

This abstract is available from: <http://www.biomedcentral.com/1471-2202/10/S1/P285>

© 2009 Frascoli et al; licensee BioMed Central Ltd.

A recently proposed mean-field mesoscopic theory of mammalian cortex dynamics describes the salient features of rhythmic electrical activity in the cerebral macrocolumn, with the use of inhibitory and excitatory neuronal populations [1]. This model is capable of producing a range of important human EEG (electroencephalogram) features such as the alpha rhythm, the 40 Hz activity thought to be associated with conscious awareness [2] and the changes in EEG spectral power associated with general anesthetic effect (e.g. the so-called "biphasic" response) [3]. From the point of view of nonlinear dynamics, the model entails a vast parameter space within which multistability, pseudoperiodic regimes, different routes to chaos, fat fractals and resonances occur for a range of physiologically relevant parameter values, giving rise to a multitude of rich and elaborate bifurcation scenarios. Examples of these are the Shilnikov saddle-node bifurcation (see Figure 1 and [4]), the homoclinic doubling cascade and different kinds of resonances. The origin and the character of these complex behaviors and their relevance for EEG activity are illustrated.

References

1. Liley DTJ, Cadusch PJ, Dafilis MP: **A spatially continuous mean field theory of electrocortical activity.** *Network: Comput Neural Syst* 2002, **13**:67-113.
2. Bojak I, Liley DTJ: **Self-organized 40 Hz synchronization in a physiological theory of EEG.** *Neurocomp* 2007, **70**:2085-2090.

3. Bojak I, Liley DTJ: **Modeling the effects of anesthesia on the electroencephalogram.** *Phys Rev E* 2005, **71**: 041902(1–22)
4. van Veen L, Liley DTJ: **Chaos via Shilnikov's saddle-node bifurcation in a theory of the electroencephalogram.** *Phys Rev Lett* 2006, **97**: 208101(1–4)

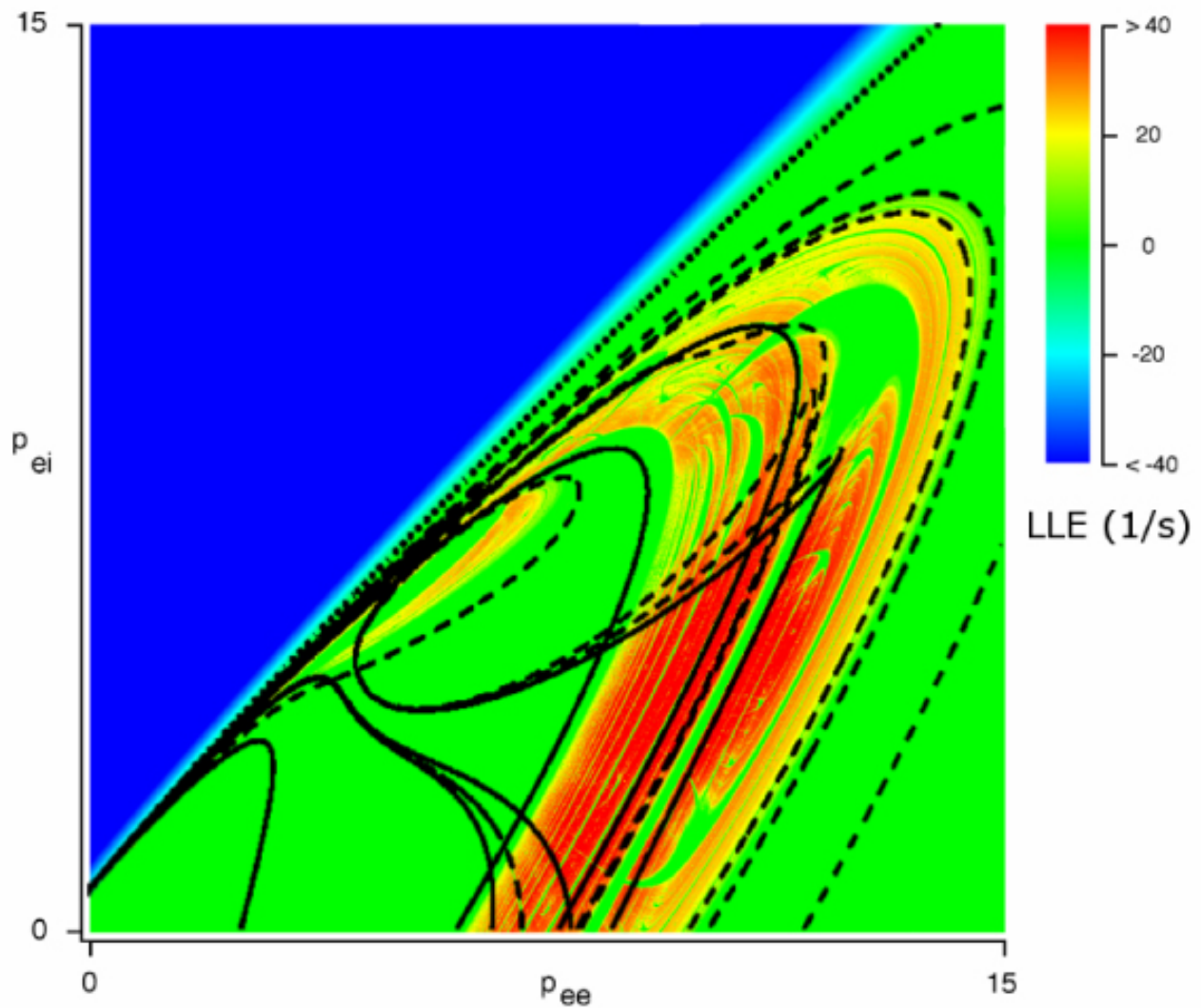


Figure 1
The largest Lyapunov exponent in color reproduced from [4], with superimposed two-parameter continuation of saddle-node and period-doubling bifurcations for periodic orbits of a mesoscopic mean field EEG model. The leftmost wedge of chaos terminates for negative values of the exterior forcings p_{ee} and p_{ei} .

Publish with **BioMed Central** and every scientist can read your work free of charge

"BioMed Central will be the most significant development for disseminating the results of biomedical research in our lifetime."

Sir Paul Nurse, Cancer Research UK

Your research papers will be:

- available free of charge to the entire biomedical community
- peer reviewed and published immediately upon acceptance
- cited in PubMed and archived on PubMed Central
- yours — you keep the copyright

Submit your manuscript here:
http://www.biomedcentral.com/info/publishing_adv.asp

