

Realistic mean field forward predictions for the integration of co-registered EEG/fMRI

Bojak, Ingo; Oostendorp, Thom F; Reid, Andrew T; Kötter, Rolf

DOI:

[10.1186/1471-2202-10-S1-L2](https://doi.org/10.1186/1471-2202-10-S1-L2)

License:

Creative Commons: Attribution (CC BY)

Document Version

Publisher's PDF, also known as Version of record

Citation for published version (Harvard):

Bojak, I, Oostendorp, TF, Reid, AT & Kötter, R 2009, Realistic mean field forward predictions for the integration of co-registered EEG/fMRI. in *BMC Neuroscience: Eighteenth Annual Computational Neuroscience Meeting: CNS*2009*. vol. 10 (Suppl 1), BMC Neuroscience, no. Suppl 1, vol. 10, Springer, Eighteenth Annual Computational Neuroscience Meeting, Berlin, Germany, 18/07/09. <https://doi.org/10.1186/1471-2202-10-S1-L2>

[Link to publication on Research at Birmingham portal](#)

General rights

Unless a licence is specified above, all rights (including copyright and moral rights) in this document are retained by the authors and/or the copyright holders. The express permission of the copyright holder must be obtained for any use of this material other than for purposes permitted by law.

- Users may freely distribute the URL that is used to identify this publication.
- Users may download and/or print one copy of the publication from the University of Birmingham research portal for the purpose of private study or non-commercial research.
- User may use extracts from the document in line with the concept of 'fair dealing' under the Copyright, Designs and Patents Act 1988 (?)
- Users may not further distribute the material nor use it for the purposes of commercial gain.

Where a licence is displayed above, please note the terms and conditions of the licence govern your use of this document.

When citing, please reference the published version.

Take down policy

While the University of Birmingham exercises care and attention in making items available there are rare occasions when an item has been uploaded in error or has been deemed to be commercially or otherwise sensitive.

If you believe that this is the case for this document, please contact UBIRA@lists.bham.ac.uk providing details and we will remove access to the work immediately and investigate.

Lecture presentation

Open Access

Realistic mean field forward predictions for the integration of co-registered EEG/fMRI

Ingo Bojak*, Thom F Oostendorp, Andrew T Reid and Rolf Kötter

Address: Donders Institute, Centre for Neuroscience, Radboud University Medical Centre, Nijmegen, Netherlands

Email: Ingo Bojak* - i.bojak@donders.ru.nl

* Corresponding author

from Eighteenth Annual Computational Neuroscience Meeting: CNS*2009
Berlin, Germany. 18–23 July 2009

Published: 13 July 2009

BMC Neuroscience 2009, 10(Suppl 1):L2 doi:10.1186/1471-2202-10-S1-L2

This abstract is available from: <http://www.biomedcentral.com/1471-2202/10/S1/L2>

© 2009 Bojak et al; licensee BioMed Central Ltd.

Brain activity can be measured non-invasively with functional imaging techniques. Each pixel in such an image represents a neural mass of about 10^5 to 10^7 neurons. Mean field models (MFMs) approximate their activity by averaging out neural variability while retaining salient underlying features, like neurotransmitter kinetics. However, MFMs incorporating the regional variability, realistic geometry and connectivity of cortex have so far appeared intractable. This lack of biological realism has led to a focus on gross temporal features of the EEG. We address these impediments and showcase a "proof of principle" forward prediction of co-registered EEG/fMRI for a full-size human cortex in a realistic head model with anatomical connectivity, see figure 1.

MFMs usually assume homogeneous neural masses, isotropic long-range connectivity and simplistic signal expression to allow rapid computation with partial differential equations. But these approximations are insufficient in particular for the high spatial resolution obtained with fMRI, since different cortical areas vary in their architectonic and dynamical properties, have complex connectivity, and can contribute non-trivially to the measured signal. Our code instead supports the local variation of model parameters and freely chosen connectivity for many thousand triangulation nodes spanning a cortical surface extracted from structural MRI. This allows the introduction of realistic anatomical and physiological parameters for cortical areas and their connectivity,

including both intra- and inter-area connections. Proper cortical folding and conduction through a realistic head model is then added to obtain accurate signal expression for a comparison to experimental data. To showcase the synergy of these computational developments, we predict simultaneously EEG and fMRI BOLD responses by adding an established model for neurovascular coupling and convolving "Balloon-Windkessel" hemodynamics. We also incorporate regional connectivity extracted from the CoCoMac database [1].

Importantly, these extensions can be easily adapted according to future insights and data. Furthermore, while our own simulation is based on one specific MFM [2], the computational framework is general and can be applied to models favored by the user. Finally, we provide a brief outlook on improving the integration of multi-modal imaging data through iterative fits of a single underlying MFM in this realistic simulation framework.

References

1. Kötter R, Wanke E: **Mapping brains without coordinates.** *Phil Trans R Soc B* 2005, **360**:751-766.
2. Bojak I, Liley DTJ: **Modeling the effects of anesthesia on the EEG.** *Phys Rev E* 2005, **71**:041902.

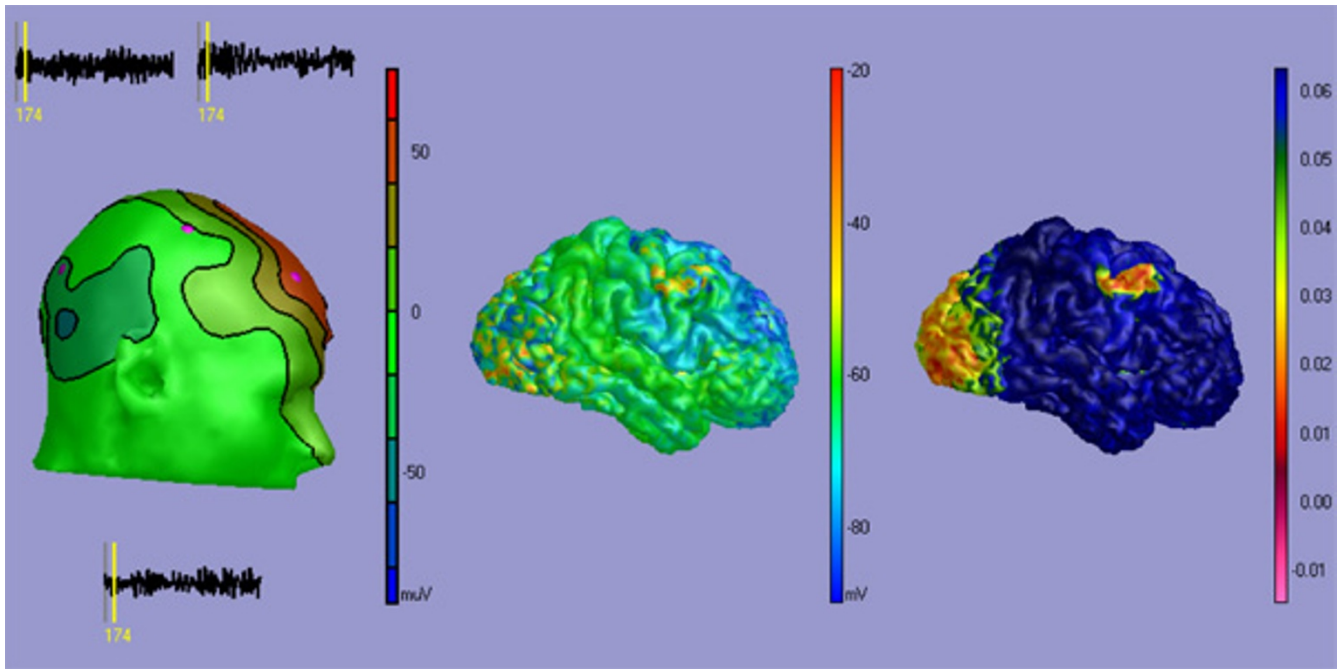


Figure 1
MFM prediction of simultaneous EEG and fMRI with local, contralateral and visual connectivity. *Left:* EEG scalp potentials. *Middle:* MFM excitatory soma membrane potential h_e . *Right:* fMRI BOLD response.

Publish with **BioMed Central** and every scientist can read your work free of charge

"BioMed Central will be the most significant development for disseminating the results of biomedical research in our lifetime."

Sir Paul Nurse, Cancer Research UK

Your research papers will be:

- available free of charge to the entire biomedical community
- peer reviewed and published immediately upon acceptance
- cited in PubMed and archived on PubMed Central
- yours — you keep the copyright

Submit your manuscript here:
http://www.biomedcentral.com/info/publishing_adv.asp

