

From Thin to Thick Representation

Wahman, Michael; Frantzeskakis, Nikolaos; Yildirim, Tevfik Murat

DOI:

[10.1017/S000305542100006X](https://doi.org/10.1017/S000305542100006X)

License:

Creative Commons: Attribution (CC BY)

Document Version

Publisher's PDF, also known as Version of record

Citation for published version (Harvard):

Wahman, M, Frantzeskakis, N & Yildirim, TM 2021, 'From Thin to Thick Representation: How a Female President Shapes Female Parliamentary Behavior', *American Political Science Review*, vol. 115, no. 2, pp. 360-378. <https://doi.org/10.1017/S000305542100006X>

[Link to publication on Research at Birmingham portal](#)

General rights

Unless a licence is specified above, all rights (including copyright and moral rights) in this document are retained by the authors and/or the copyright holders. The express permission of the copyright holder must be obtained for any use of this material other than for purposes permitted by law.

- Users may freely distribute the URL that is used to identify this publication.
- Users may download and/or print one copy of the publication from the University of Birmingham research portal for the purpose of private study or non-commercial research.
- User may use extracts from the document in line with the concept of 'fair dealing' under the Copyright, Designs and Patents Act 1988 (?)
- Users may not further distribute the material nor use it for the purposes of commercial gain.

Where a licence is displayed above, please note the terms and conditions of the licence govern your use of this document.

When citing, please reference the published version.

Take down policy

While the University of Birmingham exercises care and attention in making items available there are rare occasions when an item has been uploaded in error or has been deemed to be commercially or otherwise sensitive.

If you believe that this is the case for this document, please contact UBIRA@lists.bham.ac.uk providing details and we will remove access to the work immediately and investigate.

From Thin to Thick Representation: How a Female President Shapes Female Parliamentary Behavior

MICHAEL WAHMAN *Michigan State University*

NIKOLAOS FRANTZESKAKIS *Michigan State University*

TEVFIK MURAT YILDIRIM *University of Stavanger*

How does the symbolic power of a female president affect female parliamentary behavior? Whereas female descriptive representation has increased around the world, women parliamentarians still face significant discrimination and stereotyping, inhibiting their ability to have a real voice and offer “thick” representation to women voters. We leverage the case of Malawi, a case where the presidency changed hands from a man to a woman through a truly exogenous shock, to study the effect of a female president on female parliamentary behavior. Drawing on unique parliamentary transcripts data, we argue and show that women MPs under a female president become empowered and less confined to stereotypical gendered issue-ownership patterns, leading to a significant increase in female MP speech making. Our results directly address theories of symbolic representation by focusing particularly on intraelite role-model effects.

“There’s a proverb in Malawi that says, ‘a female cow does not pull the cart, the female cow is kept for milking’”
—Joyce Banda, Malawi’s first female president

“My sisters, my daughters, everywhere, find your voices!”
—Ellen Johnson Sirleaf, Liberia’s first female president


Across the globe, female heads of government remain rare (Jalalzai 2008; Lawless 2015; O’Brien et al. 2015; Thames and Williams 2013).¹ Lack of female presidents and prime ministers is a symptom of wider gender inequalities—both social and economic (Stockemer and Byrne 2011). But, as the literature on symbolic representation reminds us, a dearth of female political leadership may in itself perpetuate an image of appropriate female roles in public life (Alexander and Jalalzai 2020; Simien 2015; Wolbrecht and Campbell 2007).


Building on the work by Franceschet, Krook, and Piscopo (2012), Bauer (2016, 224) defines symbolic representation as: “altering gendered ideas about the role of women and men in politics, raising awareness of what women can do as political actors and legitimizing them as political actors, or encourage women to become involved themselves in politics as voters,


activists, candidates and leaders.” Whereas most research on symbolic representation has concentrated on the way in which female political role models may shape attitudes and behaviors at the mass level (e.g., Barnes and Taylor-Robinson 2017; Liu 2018; Liu and Banaszak 2017; Morgan and Bruise 2013; Zetterberg 2009), this paper focuses on the symbolic effect of a female president at the elite level. More precisely, we study how a female president may empower female members of parliament (MPs) to assert more parliamentary leadership and change their parliamentary behavior.

Women have gained increasing numerical parliamentary representation around the world (e.g., Krook 2010; Stockemer 2011). Still, some authors have questioned the extent to which increased female parliamentary representation has led to real female parliamentary leadership (Beckwith and Cowell-Meyers 2007; Childs and Krook 2008; Weldon 2002). Hassim (2006, 173), writing about the role of women in African parliaments, notes that female MPs remain marginalized in parliamentary affairs through the subtle (or sometimes not so subtle) gendered hierarchies that still persist within political institutions. She argues that analysis should distinguish between “thin” and “thick” representation. Whereas thin representation relates to the mere presence of women in parliament, thick representation refers to a form of representation where women are granted real voice and power in legislative assemblies.

We argue that the presence of a female president has an important intraelite symbolic effect and enhances female thick parliamentary representation. Specifically, we argue that the presence of a female president serves to normalize female political power, redefine gendered norms about appropriate female political behavior and competences, and create momentum for more assertiveness among female MPs. In turn, these

Michael Wahman , Assistant Professor, Department of Political Science, Michigan State University, wahmanmi@msu.edu.

Nikolaos Frantzeskakis , PhD Candidate, Department of Political Science, Michigan State University, frantze4@msu.edu.

Tevfik Murat Yildirim , Associate Professor, Department of Media and Social Sciences, University of Stavanger, murat.yildirim@uis.no.

Received: September 24, 2020; revised: December 13, 2020; accepted: January 24, 2021. First published online: February 24, 2021.

¹ According to the Thames and Williams (2013) data, only about 3% of the world’s executives during the period 1945–2006 were women.

mechanisms will lead to increased thick female representation.

Empirically, we focus on the effect of Malawi's first female president, Joyce Banda, on female thick representation. Malawi presents a unique opportunity to study how symbolic representation of a female president affects female parliamentary behavior. The most serious challenge to studying the effects of symbolic representation is that women's election into office is commonly endogenous to the social and political context that simultaneously shape gendered perceptions of female leadership. For instance, Thames and Williams (2013) find that cross-nationally the probability of having a female executive is highly correlated with female legislative representation and greater history of female political participation. However, Joyce Banda was never elected to become president; she came to power by the exogenous event of her predecessor's natural death. Moreover, her weak political position when taking office makes Malawi a suitable case for generalizations, even to cases with politically stronger female executives.

Following recent research on parliamentary behavior (Bäck, Debus, and Müller 2014; Bäck and Debus 2019; Blumenau 2019; Clayton, Josefsson, and Wang 2014; Wang 2014), we proxy thick representation by measuring gender differences in the frequency of parliamentary speech making. We make use of an original dataset of Malawi parliamentary speeches during the period 1999–2014 (covering close to 110,000 speeches) created by using innovative machine learning techniques. In our analysis, we model how the same set of parliamentarians changed their legislative behavior from the period before Malawi's first female president (2009–2012) to the period after Malawi's first female president (2012–2014).

In accordance with our theory, our analysis shows that women MPs speak significantly more after the inauguration of Malawi's first female president. Moreover, we separately analyze women's participation in debates concerning the economy. The economy is perceived as the most important issue for Malawian voters (Afrobarometer 2014) but has been stereotypically perceived as a "male" topic (Bäck, Debus, and Müller 2014; Krook and O'Brien 2012). Due to the electoral salience of the economy, female presidents have worked actively to redefine gendered notions of women's inability to lead on this issue. Our analysis shows that women MPs participated significantly more often in debates on the economy after a woman became president. Finally, to assess other potential alternative explanations, we collect and analyze additional data from earlier Malawian parliamentary sessions. However, none of the alternative explanations receive any empirical support.

The paper contributes to the literature on gender and politics in several ways. First, while most research on symbolic representation has focused on symbolic effects at the mass level, we theorize intraelite consequences of symbolic representation. Second, the paper mitigates the somewhat gloomy conclusions about the limited influence that female heads of government may

have in otherwise fundamentally patriarchal societies (e.g., Chikapa 2016; O'Brien et al. 2015; Verge and Pastor 2018). Third, the paper joins a growing literature (e.g., Clayton 2015; Wang 2014) that uses new data and innovative research methods to place cases from new democracies within mainstream research on women in politics. All in all, our study shows that a singular focus on enhancing the descriptive representation of women in parliament is inadequate (Childs and Krook 2009) and that more emphasis is needed on women's exclusion from positions at the very top of the political hierarchy (Jalalzai 2013; Liu and Banaszak 2017).

BEYOND THIN PARLIAMENTARY REPRESENTATION

Research on women and legislative politics has virtually exploded in the last few decades. Whereas most of the early literature studied the role of women in local and national legislatures in advanced democracies (e.g., Dolan and Ford 1997; Lawless 2015; Lovenduski 2005; Thomas 1994), newer research has increasingly focused on the prospects for increased equality in political representation in less established democracies in regions such as Southeast Asia (Liu 2018), Sub-Saharan Africa (Bauer and Britton 2006; Tripp 2015), the Middle East (Shalaby and Elimam 2020), and Latin America (Schwindt-Bayer 2010). Most research on women in legislative politics falls into two broader categories: women's descriptive or substantive representation (Wängnerud 2009). The literature on descriptive representation has highlighted the prevailing numeric underrepresentation of women in legislatures globally, but it has also particularly focused on how certain institutional solutions, such as gender quotas, may enhance the number of women in representative institutions (Tripp and Kang 2008). The literature on substantive representation, on the other hand, has focused more on how the interests of women citizens are advanced by increased female political representation (Chiweza 2016; Clayton et al. 2019; Mansbridge 1999; Nwankwor 2019).

However, as Hassim reminds us, enhanced female parliamentary representation may do little to promote women's political interests if they remain marginalized within representative institutions. Despite increased descriptive representation, she concludes that women have had severe difficulties in being "taken seriously within institutions that are historically and culturally male" (2006, 173). While women may offer substantive representation and speak more on the issues of crucial importance to women citizens, their voices may still be quelled within the patriarchal culture of national legislatures.

Several accounts from around the globe have illustrated the marginalization of women within parliaments, all pointing toward the lack of thick female representation. For instance, several studies of parliamentary cultures in cases as diverse as the United Kingdom, Sweden, and Namibia have attested to frequent harassment and discrimination against women

(Bauer 2006; Erikson and Josefsson 2019; Lovenduski 2005). Others have focused on women MPs' slow career advancement and their absence in cabinets and high-prestige committees (Heath, Schwindt-Bayer, and Taylor-Robinson 2005; Krook and O'Brien 2012; Reynolds 1999; Shalaby and Elimam 2020).

An area in which the lack of thick representation has been particularly apparent is parliamentary debates. Whereas a number of studies from around the world have highlighted how female MPs have suffered harassment and ridicule when taking to the floor (e.g., Tøraasen 2019), quantitative research has illustrated that women tend to speak significantly less than men do in parliament (Bäck and Debus 2019; Blumenau 2019).

Much of the earlier research on women in parliament has done the important work of descriptively documenting the lack of thick female representation. Still, we know little about the ways in which women's voices within legislative assemblies can be amplified. One existing, compelling argument in the literature relates the lack of thick representation to the general lack of descriptive representation. According to the often-cited critical mass theory, women are inhibited in their roles as legislators by their minority status. Only when female representation grows numerically can women collectively advance their position to demand greater space in the legislative process (Dahlerup 1988). While there is research to support that increased female representation within parliaments or specific party groups may result in women taking to the floor more frequently (Bäck and Debus 2019; Yoon 2011), fostering thick representation by enhancing descriptive representation is, at best, an incomplete strategy. Research from countries like Sweden, where women are represented in parliament at almost the same rate as men (but where a woman has still never been prime minister), has shown that women MPs still speak significantly less in parliamentary debates than men (Bäck, Debus, and Müller 2014).

FOSTERING THICK REPRESENTATION THROUGH SYMBOLIC REPRESENTATION

Placing the critical-mass theory aside, this paper investigates intralite symbolic representation as an alternative pathway toward enhanced thick representation. Bauer (2019) has argued that symbolic representation is the least explored, but potentially most powerful path toward enhanced female political representation. Most existing research on symbolic representation has not focused on intralite effects but instead on the effect of female political representation on mass-level public opinion and political engagement. Research has suggested several consequences of increased female parliamentary representation, such as increased female political engagement (Atkeson 2003; Barnes and Burchard 2013; Wolbrecht and Campbell 2007), increased likelihood in women running for office (Gilardi 2015), enhanced public support for female leadership, (Burnet 2011), and generally greater satisfaction with democracy (Schwindt-Bayer 2010). Liu and Banaszak (2017) and Alexander and Jalazai

(2020) have argued that the symbolic effects of women's political leadership should be particularly pronounced when women take up highly visible leadership positions.

These studies on mass-level effects of symbolic representation prompt the question as to whether symbolic effects may also exist at the intralite level. We argue that role-model effects would be particularly pronounced among women of similar social status. As argued by Liu (2018), when asymmetries are large between the power obtained by women in political institutions and the power obtained by ordinary women in social structures, role-model effects may be limited. However, even in highly patriarchal societies, women within political elites are likely to identify strongly with each other and model the behavior of more successful women within the same political hierarchies. When one of their fellow elite women manages to break the ultimate glass ceiling to become the head of government, this would have a particularly strong symbolic effect for parliamentary women.² We argue that the installation of a female president has several important intralite symbolic effects that will promote women's assertiveness and shape female MPs' propensity to speak in parliament.

First, a female president has the ability to normalize the presence of women in political power. Women remain highly restricted in their political activities; women MPs are often perceived as representatives of their gender and advocates for female "special interests" (Gilardi 2015). However, the presidency represents the very embodiment of male political power. When a woman takes up a position of such magnitude, it challenges the traditional understandings of female leadership being a remarkable deviation from the norm. This reduced salience of gender for female political elites should transfer from the president to other female elites, such as parliamentarians. For instance, writing about the early years of Angela Merkel's leadership in Germany, Ferree (2006, 106) notes: "She is inevitably going to contribute to changing the symbolic association of gender and politics. ... Paradoxically, one of the most powerful evidences that such a change has happened already is the extent to which her gender had become unremarkable as she goes about the work of exercising political authority."

Second, a female president can alter stereotypes about appropriate behavior for male and female MPs and challenge gendered preconceptions about suitable leadership qualities. Past scholarship has shown that men and women in leadership positions are often held to different standards when competence and leadership are evaluated. The traits that make women in leadership positions "unlikable" are the same characteristics

² We might expect that the symbolic effect of a female president is larger than that of a female prime minister. According to Jalazai (2013, 3), women are more inhibited by gender stereotypes in presidential than in parliamentary regimes: "Perceptions of women's negotiation and collaboration skills limit them less than their supposed inability to act unilaterally, aggressively and decisively—all necessary presidential traits."

that are often deemed necessary for leadership competence (Heilman and Okimoto 2007). This is an important dilemma. As Amanatullah and Tinsley (2013, 110) succinctly put it, “those who act agentically are seen as competent but unlikable; those who act communally are viewed as likable but incompetent.” However, the presence of a female president may challenge narrow preconceptions of gender-appropriate behavior. Such changes would encourage women to participate more frequently in parliamentary debates. Furthermore, showcasing women in leadership can alter the sort of personal qualities that are associated with competence. In extension, female perspectives may be perceived as more valuable in democratic deliberation. Women in power have often drawn on maternal or matriarchic imagery to legitimize their leadership (Franceschet, Piscopo, and Thomas 2016). Such strategies were apparent in Joyce Banda’s rhetoric, stating for instance: “where I come from it is the woman who shoulders the biggest responsibility of supporting the family, through her contributions of labor, time, emotions and energy” (Banda 2013).

Third, the promotion of a female president signifies a general momentum for women in politics, allowing female MPs the opportunity to advance their positions and assert leadership. Such effects have been noted in the general literature on symbolic representation, arguing that the historic marginalization of women has made women and men alike susceptible to the view that women are inferior in governing (Alexander 2012; Fox and Lawless 2004). After Joyce Banda became the president, several MPs used the installation of a female president as a declaration of victory, a call for more respect, and a demand for further advancement. For instance, Jean Kalilani, an MP of Malawi’s Dowa Central constituency (Malawi Parliamentary Hansard 2012), declared: “The question is no longer whether a woman can be president of a country or not, but rather what she can deliver. Malawi must get more and more women in decision making positions.” It should, however, be noted that women’s political momentum may be a double-edged sword. On one hand, it will embolden female MPs. On the other hand, it may also inspire backlash among male MPs, who increasingly regard women as a threat to their political careers (Krook 2015). We still, on balance, expect that the presence of a female president will lead to women taking more assertive leadership roles, but we will refer back to this possible backlash effect in the empirical section. Based on this discussion, we formulate the following hypothesis:³

³ A possible objection to our hypothesis is that a female president would empower not only female MPs but also their male colleagues. At the mass level, Schwandt-Bayer (2010) showed that higher female representation in Latin American parliaments was related to increased satisfaction with democracy among women as well as men. A woman president could increase the sense of inclusion among MPs of both genders. However, speaking time in parliament is finite. Although speaking time is not a complete zero-sum game, where an increase in women’s speech frequency will result in the

Frequency hypothesis: When a woman becomes head of government, female MPs will speak more frequently in parliament than before.

A female president may affect not only the frequency with which women MPs speak but also the topics on which women parliamentarians access leadership. Earlier research has shown that female MPs tend to be particularly marginalized on issues that have traditionally been perceived as “masculine” or “hard” and have been foregone for appointments to cabinet and committees relating to such topics (e.g., Krook and O’Brien 2012; Reynolds 1999; Shalaby and Elimam 2020). Similarly, Bäck, Debus, and Müller (2014) show that women in the Swedish parliament are more likely to speak on issues that the authors characterize as “soft,” and less likely to speak on those issues that can be considered “hard.”

Above all, one traditional “masculine” topic that stands out is the economy. Previous research has found women to be conspicuously absent on issues related to the national economy (Bäck, Debus, and Müller 2014). This is vital for two reasons. First, voters tend to rank the economy consistently as one of the most important political issues. This is particularly true in developing economies. For instance, Clayton et al. (2019) showed that African voters, men and women alike, rank the economy as far more important than any other issue. Women’s particularly thin representation on issues that have been considered “masculine” can be a consequence of both choice and legislative marginalization. Women may prioritize other issues than do men, particularly those that tend to overwhelmingly affect the livelihood of fellow women (Wängnerud 2009). However, given the weight that women voters assign to the economy, we cannot explain women MPs’ relative absence on this issue as a reflection on women voters’ preferences. Secondly, given the electoral importance of this issue, women’s absence in economic debates are likely to severely hurt women MPs’ career advancement.

Research from a variety of contexts has suggested that gender stereotypes have led voters to perceive male political candidates as more competent on economic issues (e.g., Hayes and Lawless 2015). Aware of such negative stereotypes, female executives have often actively challenged them, trying to redefine the economic issue in more feminine terms. Most famously, Margaret Thatcher in the United Kingdom made the comparison between the national economy and a household budget to underscore her competence to deal with a struggling economy (Ponton 2010, 207). In other cases, particularly in the developing world, women leaders such as Joyce Banda and Ellen Johnson

corresponding decline in men’s speech frequency, men and women cannot increase their number of speeches indefinitely (due to limitations in time and sessions). It is likely that women MPs will be more affected by the mechanisms proposed above than are their male colleagues. For this reason, our hypothesis relates to female MPs specifically.

Sirleaf have actively pushed a more inclusive economic agenda, where female economic empowerment was placed at the core of the national development mission (Spiker 2019, chap. 2). Broad economic leadership from a female president and her active attempt to redefine gender stereotypes should also empower women MPs to take more active leadership on the economic issues. We, thus formulate the following hypothesis:

The economy hypothesis: When a woman becomes head of government, female MPs will speak more frequently in parliament on the economy than before.

CASE SELECTION AND RESEARCH DESIGN

Empirically, we leverage the case of Malawi to study the symbolic effect of a female president on thick female parliamentary representation. Joyce Banda became Malawi's first and Africa's second female president (after Liberia's Ellen Johnson Sirleaf) when she entered office in April 2012. Banda was, however, never elected to the presidency. She had been the vice president since 2009, but assumed office after her predecessor, Bingu Mutharika, died in office. At the time Banda took office, she had already fallen out with the late president and had broken away from the governing Democratic Progressive Party (DPP) to start her own opposition party, the Peoples' Party (PP). The rift between Banda and the DPP was so wide that top officials within the DPP, centering around the late president's brother Peter Mutharika, unconstitutionally tried to prevent Banda from assuming office (Patel and Wahman 2015).

Figure 1 positions Malawi in a global and African comparison on two vital variables: the V-Dem Female Political Empowerment Index⁴ and female parliamentary representation (Coppedge et al. 2020).

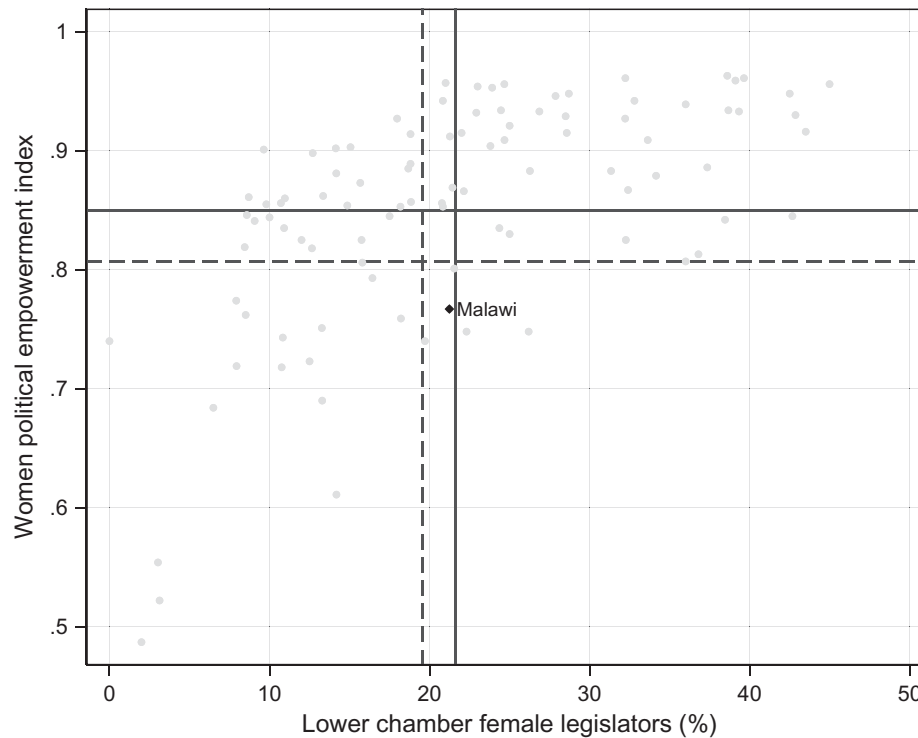
Malawi scores below both the African and global averages on the political empowerment index. This is not to say that women have been completely sidelined economically, culturally, and politically in Malawi. Indeed, much of the literature on cultural gender norms in Malawi has emphasized the importance of the country's mostly matrilineal culture for granting political and economic access for women both contemporarily and historically in a way that has not been the case in many other African countries (Muriaas et al. 2019; Robinson and Gottlieb 2021). In terms of female political representation, Malawi in 2012 is slightly above the African and slightly below the global average. From democratization in 1994 to the 2009 election, female parliamentary representation increased significantly from 7% to 22% (see Table 1). The Malawian public had also become increasingly aware of gender disparities in political representation through the 50:50

campaign, a campaign launched in the 2009 election to enhance female political representation (Kayuni and Muriaas 2014). Nevertheless, despite acknowledging progress, Amundsen and Kayuni (2016, 1) conclude, "Much of the traditional role of women still prevail in Malawi. She is the caretaker; her role is largely limited to the private domain, and much social and cultural prejudice against her participation in politics persists."

It is not clear whether a country with relatively high or relatively low levels of gender equality could be expected to experience the largest symbolic effect of a female president on thick parliamentary representation. On one hand, one might argue that the largest effect would be observed in the most gender-unequal societies (often found in the developing world) where a female president would break the strongest with traditional gender roles. On the other hand, it might be that political gender roles would be more amendable in otherwise relatively gender-equal societies (often found within OECD countries). Findings from studies on symbolic representation in various settings do not provide clear priors.⁵ Although we remain agnostic on whether more or less gender-equal cases would make for a least-likely case, we believe that the Malawian case has one critical benefit in terms of empirical generalization. While much of the literature on female executives has focused on politically strong women with considerable electoral mandates, strong political parties, and significant political clout, such as Angela Merkel, Michelle Bachelet, or Ellen Johnson Sirleaf (e.g., Ferree 2006; Thomas and Adams 2010), Banda was politically weak, her political future was unpredictable, and her party was unorganized. She also suffered from the sort of misogynistic public attacks that women in leadership positions across the world have often endured (Chikaipa 2019; Lora-Kayambazinthu and Shame 2016). For instance, when first becoming president, former first lady Callista Mutharika, questioned her ability to rule, dismissing her as a "simple market woman." Banda's popularity also vanished during her term in office due to a serious economic crisis, inherited from her predecessor, and the revelation of a systemic corruption scandal, popularly referred to as "Cashgate" (Dulani and Chunga 2015). Although the corruption scandal involved both the Banda and the Mutharika regimes, and although Banda was never proven to be personally implicated, voters placed the Cashgate scandal squarely at the feet of Banda (Zimmerman 2015). Thus, it is possible that sexism directed toward Banda and her vanishing popularity may have reduced the positive symbolic effect and led to backlash against female MPs (Krook 2015). We argue that if a politically relatively weak president

⁴ The index ranges from 0 to 1 and is obtained by averaging three different V-dem indices: the women's civil liberties index, women's civil society participation index, and women's political participation index.

⁵ For examples of studies showing positive symbolic effects in advanced industrialized countries see, e.g., Wolbrecht and Campbell (2007) and Karp and Banducci (2008); showing positive symbolic effects in developing countries, see Beaman et al. (2009) and Barnes and Burchard (2013); for research showing no symbolic effects in advanced industrialized countries, see Dolan (2006) and Wolak (2020); for research showing no symbolic effects in developing countries, see Clayton (2015), Liu (2018), and Zetterberg (2009).

FIGURE 1. Female Political Empowerment and Female Parliamentary Representation

Note: Source: The data are from 2012. The figure only includes countries classified as electoral democracies or liberal democracies by the V-Dem Regimes of the World Index. Dashed lines represent African averages and solid lines represent global averages.

TABLE 1. Female Parliamentary Representation in Malawi 1994–2014

Parliamentary term	President	Female representation
1994–1999	Bakili Muluzi (Male)	6.6%
1999–2004	Bakili Muluzi	8.8%
2004–2009	Bingu Mutharika (Male)	14.0%
2009–2014	Bingu Mutharika, 2009–2012 Joyce Banda (Female), 2012–2014	22.0%

Note: Source: Chimunthu Banda (2017:176).

like Banda could change the behavior of female parliamentarians, we would expect the same effect in cases with politically stronger executives.

The Malawi case also offers a unique opportunity in terms of internal validity. The unusual circumstances surrounding President Banda's rise to power make Banda's presidency exogenous to changes in perceptions concerning women's leadership. Indeed, the endogenous nature of female political representation represents one of the greatest challenges for causal analysis of symbolic representation. Moreover, since there was no parliamentary election during this period, the same MPs were in parliament throughout the period June 2009–April 2012 (under President

Mutharika) and April 2012–April 2014 (under President Banda) and there was no change in the number of female MPs.

One possible limitation of our research design is that although Banda's appointment was exogenous, we cannot rule out the possibility that other political events happening after Mutharika's death shaped the legislative behavior of men and women differently. However, to mitigate this risk, our analysis will also study other alternative explanations that could account for changes in female legislative behavior, using data from additional parliamentary terms.

DATA AND METHODS

To study the legislative behavior of MPs, we rely on parliamentary transcripts, an underused resource in the African context. With the notable exception of the innovative work by Clayton, Josefsson, and Wang (Clayton, Josefsson, and Wang 2014; 2017; Wang 2014) from the Ugandan parliament, most quantitative content analyses that are based on parliamentary transcripts come from the North American or European context (e.g., Fernandes, Leston-Bandeira, and Schwemmer 2018; Proksch and Slapin 2012).

We introduce a new dataset on speeches in the Malawian parliament for the period 1999–2014. These transcripts had not previously been made readily available to

the public but were obtained through intense fieldwork and direct communication with the librarian of the parliament in Lilongwe.⁶ Our collection of transcripts covers 32 parliamentary sessions. Each session represents one legislative sitting in parliament and varies in length. In total, the transcripts cover almost 110,000 speeches held by the 463 MPs in our dataset.

Given the large volume of speeches, we relied on machine learning to code their content. Machine learning has proven to be a valuable tool for social scientists, particularly for text analysis (Lucas et al. 2015) and text classification (Clayton, Josefsson, and Wang 2017; Hopkins and King 2007). Specifically, we used a supervised learning approach. We employed transfer learning on the pretrained network BERT (Devlin et al. 2018) and trained it to code the speeches based on the widely used coding scheme of the Comparative Agendas Project (Baumgartner, Green-Pedersen, and Jones 2006). The training set consisted of 2,500 hand-coded speeches from original transcripts selected at random. We discuss our approach in more detail in the online appendix.

In our analysis, we use two dependent variables: the *number of speeches* made by an MP and the *speeches on the economy*. To create the second dependent variable, we recoded as *speeches on the economy* all speeches that, based on the CAP scheme, were coded as domestic macroeconomics; labor and employment; foreign trade; or banking, finance, and domestic commerce.

INDEPENDENT VARIABLES

Our main independent variable is the gender of the MP. We obtain the gender of each MP from Ott and Kanyongolo (2010, 412ff.) and code whether an MP is *female*. We are primarily interested in the interactive effect of gender and whether a speech was held during the *Banda term*. Our data contains eleven parliamentary sessions for the period June 2009–April 2014; sessions 1–7 occur before the Banda presidency and sessions 8–11 during the Banda term.

We also include a number of control variables. Malawi is known for having high MP turnover, particularly for female MPs (Wahman and Brooks 2021). Since we may expect that experienced MPs are more engaged in debates than less experienced MPs, we control for whether an MP is a *newcomer*. We code this variable by scanning electoral results from previous elections. We also control for important offices held by MPs. Specifically, if an MP was serving as minister, deputy minister, committee chairperson, or as part of their party's legislative leadership,⁷ they are coded as *Senior MPs*. We expect that women would be less likely to have *ministerial portfolios* (Arriola and Johnson 2014) and that MPs holding such offices are more likely

⁶ We are hugely grateful for the expertise and assistance provided by the Chief Parliamentarian Librarian in Lilongwe, Mr. Maxwell Banda.

⁷ Legislative leadership roles include being Leader of the House, Government Chief Whip, Deputy Government Chief Whip, Leader of the Opposition, Party Whip, and Party Deputy Whip.

TABLE 2. Descriptive Statistics

	Min	Max	Mean	Standard deviation
Dependent variables				
Total number of speeches	0	688	9.74	26.04
Speeches on the economy	0	204	1.41	6.20
Independent variables				
Banda	0	1	0.31	0.46
Female	0	1	0.21	0.41
Senior MP	0	1	0.19	0.39
Newcomer	0	1	0.74	0.44
Finance committee	0	1	0.09	0.29
DPP	0	1	0.61	0.49
PP	0	1	0.05	0.22
MCP	0	1	0.15	0.35
Independent	0	1	0.05	0.21
Month	0	19	7.79	5.61

to appear in parliament. In models measuring the number of speeches on the economy, we control for membership in the *Budget and Finance Committee*. In addition, we control for whether an MP belongs to either of the two ruling parties, *DPP* (in the Mutharika period) and *PP* (in the Banda period), the main opposition party *MCP*, or no party if they were *independent*.⁸ Finally, to account for time trends, we include a time variable for the number of *months* the government has been in office as well as its squared term. Descriptive statistics for all variables are provided in Table 2.

MODEL ESTIMATION

For our main analyses, we use MP-month as our unit of analysis and counts of speeches as our dependent variable. Looking at the distribution of our dependent variables, we find that the standard deviation is much larger than the mean and for a large percentage of the observations the dependent variable takes the value 0. Taking into consideration the data distribution, with a large number of structural 0s, we conduct our analysis using a zero-inflated negative binomial model with standard errors clustered on the individual MP (to account for heteroscedasticity across MPs) to compare women's and men's speech counts during the Mutharika period and the Banda period. A possible alternative to the model-based approach we opt for here would be a difference-in-difference design; however, the structure of the data would make such an approach problematic.⁹

⁸ Using information from the transcripts.

⁹ The benefit of a difference-in-differences design is maximized when the model used is linear. Even if standard difference-in-differences assumptions hold in a nonlinear model (including the parallel trends

During the Banda period, we expect that female MPs are “treated” by the fact that the president is a fellow woman. On the other hand, we do not expect this “treatment” to affect male MPs. We thus focus on the change in the number of speeches made by female MPs in the two periods and on how they compare with the number of speeches made by male MPs during the same two periods. In order to investigate these relationships, we include an interaction term between the variables *Female*, denoting the gender of the MP, and *Banda*, denoting under which government the speech took place. Our main model is specified as follows with *i* denoting the individual and *t* denoting time:

$$\begin{aligned} \text{Number of Speeches}_{i,t} = & b_0 + b_1 * \text{Banda}_{i,t} \\ & + b_2 * \text{Female}_{i,t} \\ & + b_3 * (\text{Banda}_{i,t} * \text{Female}_{i,t}) \\ & + b_4 * \text{SeniorMP}_{i,t} \\ & + b_5 * \text{Newcomer}_{i,t} \\ & + b_6 * \text{DPP}_{i,t} \\ & + b_7 * \text{PP}_{i,t} \\ & + b_8 * \text{MCP}_{i,t} \\ & + b_9 * \text{Independent}_{i,t} \\ & + b_{10} * \text{Month}_{i,t} \\ & + b_{11} * \text{Month}_{i,t}^2 + e_{i,t}. \end{aligned}$$

ANALYSIS

Research on parliamentary behavior around the world has found that women speak less in parliament than their male colleagues (Bäck and Debus 2019). This is also true in Malawi. Looking at the 2009–2014 parliament, we find that the average female MP spoke only 69% as often as the average male MP. We also find the sort of gendered differences in speech topics, observed from other countries. Figure A1 in the appendix shows speech frequency by gender broken down by speech topic. Gender differences are particularly noteworthy on economic issues. In the 2009–2014 parliament, the average female MP only made 49% as many economy speeches as the average male MP.

The noteworthy discrepancy in speech making between the genders is troubling. Not only is parliament dominated by men descriptively; female MPs are also less active in parliamentary debates. Low female activity in parliamentary debates combined with low descriptive representation means that out of the 51,981 parliamentary speeches that were made in the Malawian parliament during the period 2009–2014, 84.3% were made by male MPs.

assumption), nonlinear models cannot exploit them and often violate them (Lechner 2010). Given that our dependent variable is a count variable with high overdispersion and a large number of structural zeros, the use of a linear model would not be appropriate. Instead, we use a count model and follow the advice by Ai and Norton (2003) on estimating effects from nonlinear models, using simulations that keep confounding variables at substantively meaningful values.

However, the gendered patterns among the MPs with modal characteristics¹⁰ seem to change when Malawi gets its first female president, Joyce Banda. In Figure 2 we plot a kernel-weighted local polynomial of the female-to-male MP speech ratio on the months that the parliament was in session. This preliminary analysis shows a clear break between the Mutharika presidency, where female MPs spoke about 60% as often as male MPs, and the Banda presidency, where they spoke about 85% as often as their male counterparts. Figure 2 also fills a second important function in observing general time trends, independent of the break offered by the Banda presidency. This is important to rule out the possibility that the “Banda effect” is simply due to a generally positive time trend. The 2009 election was a breakthrough for female parliamentary representation in Malawi (Kayuni and Wang 2014). Furthermore, members of the women’s caucus in parliament were offered various training opportunities to become more effective legislators (Adams and Wiley 2020; Chiweza, Wang, and Maganga 2016). These factors could have resulted in gradual and increased activity of women during the entire parliamentary term. However, Figure 2 shows no general positive time trend in the data. The female to male MP speech ratio is relatively consistent within the Mutharika and Banda periods, respectively.

To further explore the potential intraelite effect of symbolic representation on thick female representation, we present a number of zero-inflated negative binomial regression models. We report our findings using simulations for our two main hypotheses: the *frequency hypothesis* and the *economy hypothesis*. In linear-additive regression models, the effect and statistical significance of independent variables can be interpreted directly from the table of results based on a single coefficient. However, this is not true for multiplicative interaction models like the one we present here. The most important basis for statistical inference is not the *p*-value of the interaction effect itself, substantive effects are better assessed through substantively meaningful simulations (Ai and Norton 2003; Brambor, Clark, and Golder 2006). As we are mostly interested in the behavior of the typical MP, we set all variables at their mode. As a result, our estimates describe newcomer, party-affiliated (not independent), male and female MPs that do not hold ministerial office or are a part of parliamentary leadership. The estimates for the *frequency hypothesis* are presented in the top row of graphs in Figure 3.¹¹

The top left panel of Figure 3 shows the expected number of speeches by male and female MPs during the Mutharika and Banda periods, respectively. Before we move on to interpret these results, it is worth reiterating that our hypothesis states that women will speak significantly more in the Banda term. However, if we see

¹⁰ Newcomer, party-affiliated (not independent), male and female MPs that do not hold ministerial office or are a part of parliamentary leadership.

¹¹ Full results table in Table A1 (appendix).

FIGURE 2. Female to Male MP Speech Ratio over Time

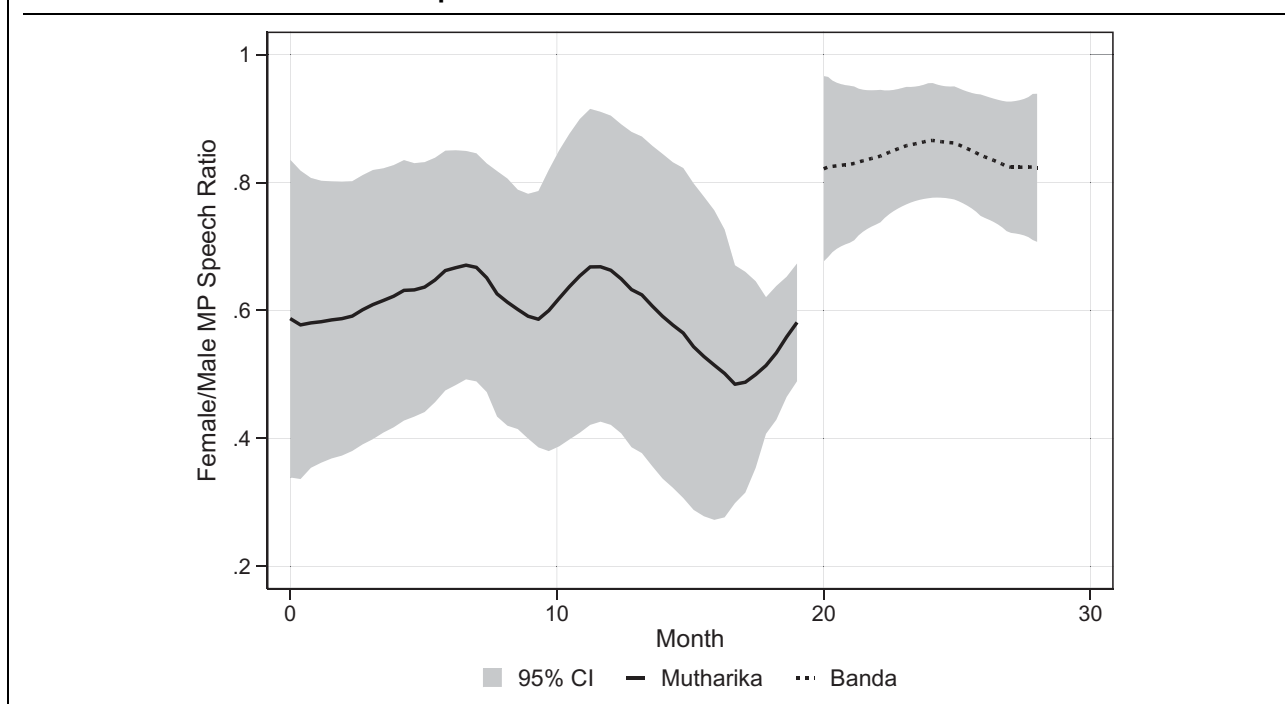
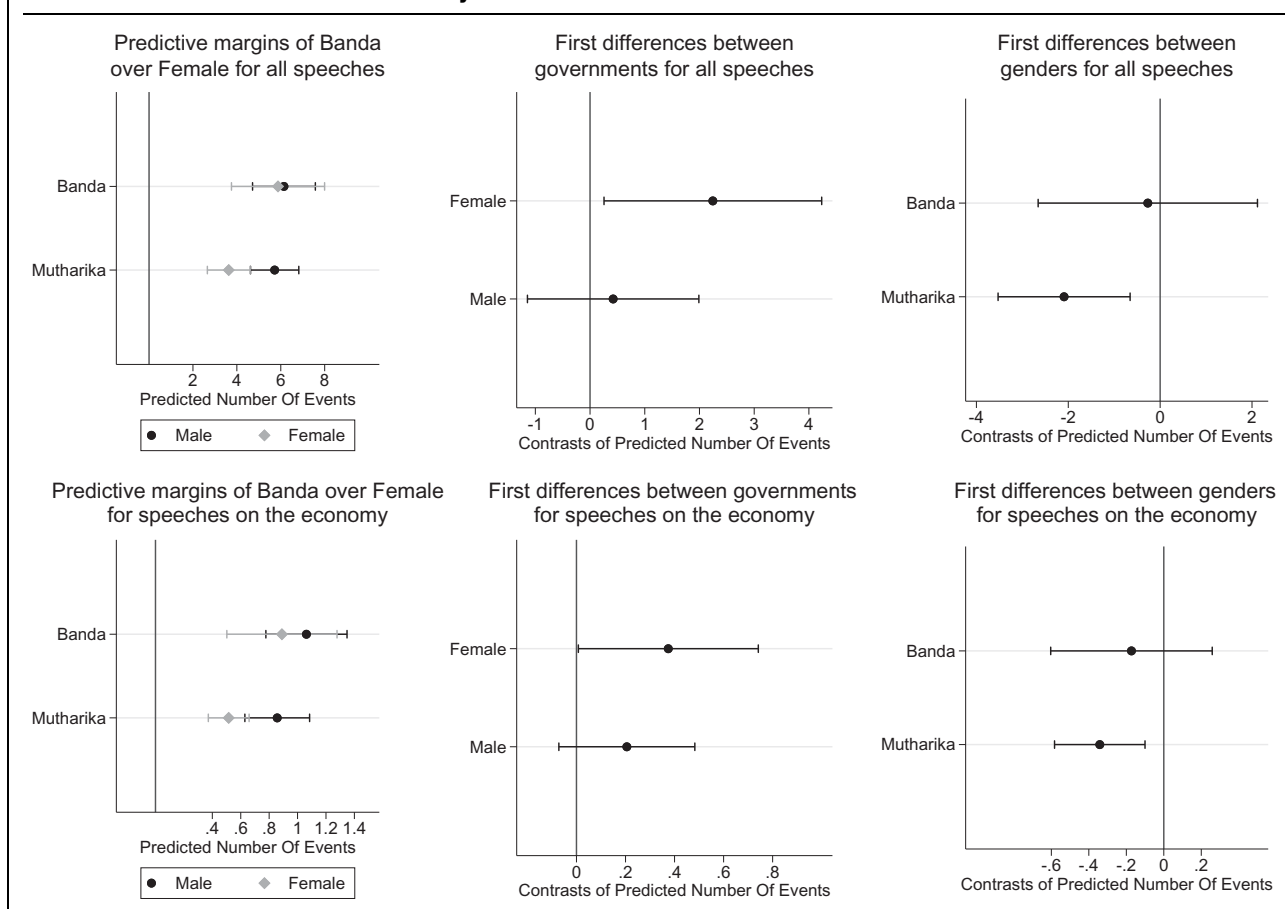


FIGURE 3. Simulations Main Analysis



Note: The 95% confidence intervals are included

the same kind of increase for men, this would suggest other possible substantive explanations, not directly related to gender. It could also suggest that a woman president empowers both men and women to speak more frequently in parliament. We did not explicitly hypothesize that the gender gap between men and women would disappear (although this could potentially be the case), nor did we hypothesize that women will speak significantly more than men will during the Banda period.

During the Mutharika period, male MPs are projected to speak 5.7 times/month, while female MPs are only expected to speak 3.6 times. On the other hand, during the Banda period, male MPs were expected to speak 6.1 times and female MPs 5.9 times/month. In the middle top-row panel, we show how the expected number of speeches for men and women changes in the Banda period, compared with the Mutharika period. We find that the increase of 2.2 speeches/month for women under Banda (observed in Figure 3) is statistically significant ($p = 0.027$). On the other hand, men do not speak significantly more in the Banda period than during the Mutharika period. Finally, in the top right panel, we contrast the expected number of speeches made by male and female MPs over the two periods. We find that women spoke significantly less than men did during the Mutharika period but not during the Banda period. Taken together, these graphs provide sound support for our *frequency hypothesis*. Our main models use the number of speeches to operationalize thick representation. In the appendix, we also rerun the analysis using the number of words as our dependent variable (Figure A2). This robustness test does not yield substantially different results.

ECONOMY HYPOTHESIS

The bottom left panel of Figure 3 shows the expected number of speeches on the economy by male and female MPs during the Mutharika and Banda periods, respectively. During both periods, male MPs are projected to speak more often on the economy than female MPs. During the Mutharika period, the expected number of speeches per month on the economy was 0.86 for men, compared with 0.52 for women. During the Banda period, however, the gender gap is reduced, where the expected number of speeches per month on the economy was 1.06 and 0.89 for men and women, respectively.

To directly test our hypothesis, the middle graph of the bottom row contrasts the predicted number of economy speeches/month for each gender, comparing the Banda period with the Mutharika period. We find that while women increase their number of economy speeches significantly ($p = 0.045$) during the Banda period, there is no statistically significant difference in the number of economy speeches for men between the Mutharika and Banda periods.

Finally, the bottom right panel of Figure 3 contrasts the expected number of speeches on the economy

made by male and female MPs over the two periods. We find that women spoke significantly less than men did on the economy during the Mutharika period but not during the Banda period. As a result, the analysis provides strong support for our *economy hypothesis* and lends further support to the theory on the symbolic importance of a female head of government. The results are not substantially different if we measure our dependent variable with number of words rather than number of speeches (Figure A2).

To further investigate changes in gendered patterns on various issues, Figures A3–A5 in the appendix replicate the same analysis for the six other topics that are most frequently discussed in the Malawi parliament. This additional analysis shows that the economy is a topic where female participation is substantially increased due to the intraelite symbolic representation effect. However, we do also find interesting variations between the Mutharika and Banda periods on two other topics that have traditionally been perceived as “male” topics: government operations and crime. We show that women spoke significantly more about government operations under Banda, we also show that there is no longer a statistically significant difference between male and female MPs in their expected number of speeches on crime during the Banda period.

Alternative Explanations

Our empirical strategy offers many advantages, but there are still limitations. Specifically, some of the effects found in the main analysis could have been related to idiosyncratic factors in the Mutharika period or other possible factors affecting women and men differently after the installation of Banda. To assess the most important alternative explanations, we collected and coded additional transcripts for the period 1999–2009 and engaged in further analysis.¹²

A Mutharika Effect Rather than a Banda Effect?

First, we evaluate the possibility that the observed effect was associated particularly with the Mutharika presidency rather than the female presidency. The 2009 parliament was Mutharika’s second term after reelection in the 2009 presidential election. To evaluate whether Mutharika is an exceptional male president, we compare male and female parliamentary behavior during Mutharika’s first term in office (2004–2009) with male and female parliamentary behavior during the last term of Mutharika’s male predecessor, Bakili Muluzi. If it turns out that women spoke more under Muluzi than they did under Mutharika, the observed increase in female speech under Banda could be more a consequence of Mutharika losing office than Banda gaining it.

¹² This represents all transcripts available through the Parliamentary Library in Lilongwe.

FIGURE 4. Difference between the Muluzi and Mutharika Periods

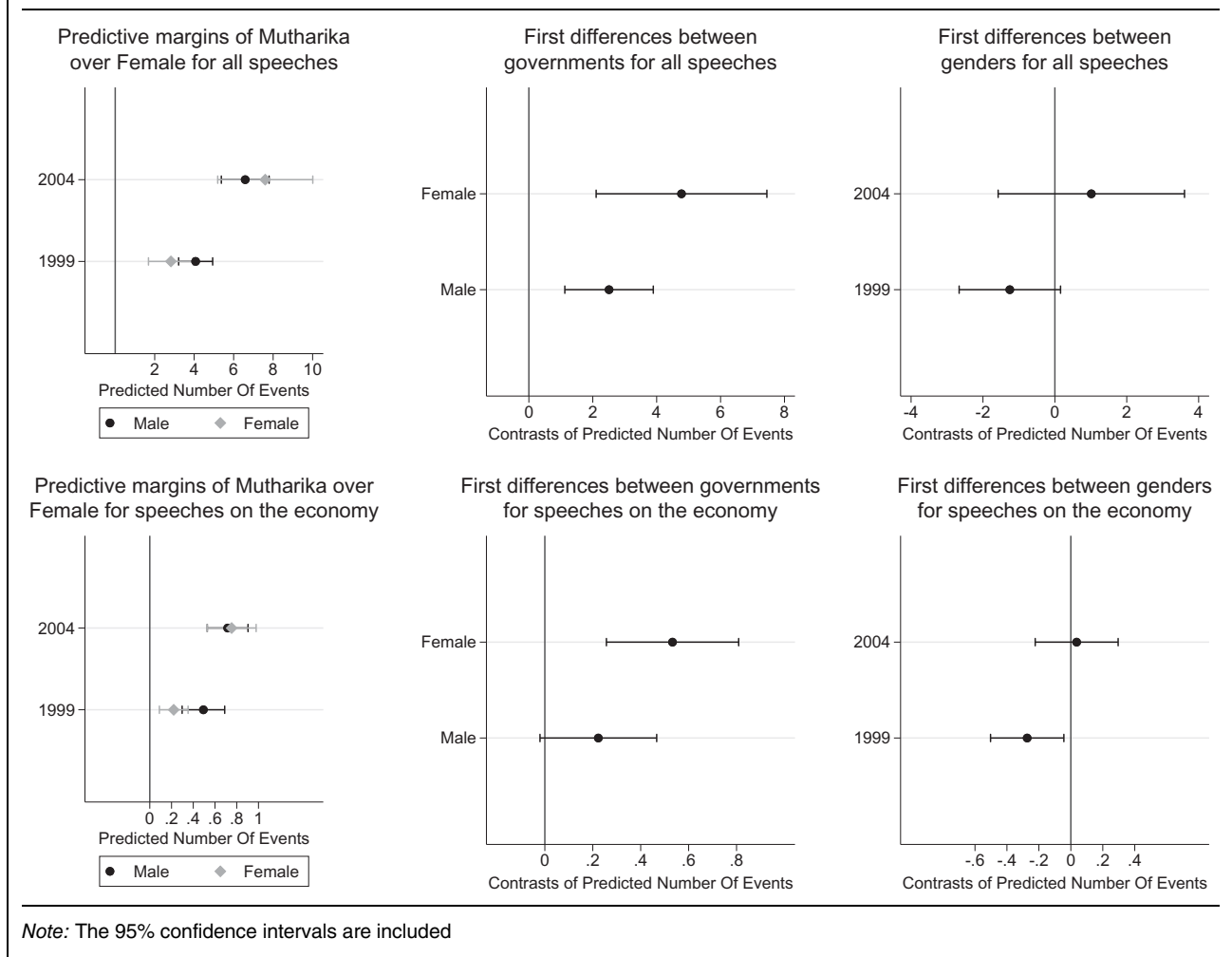


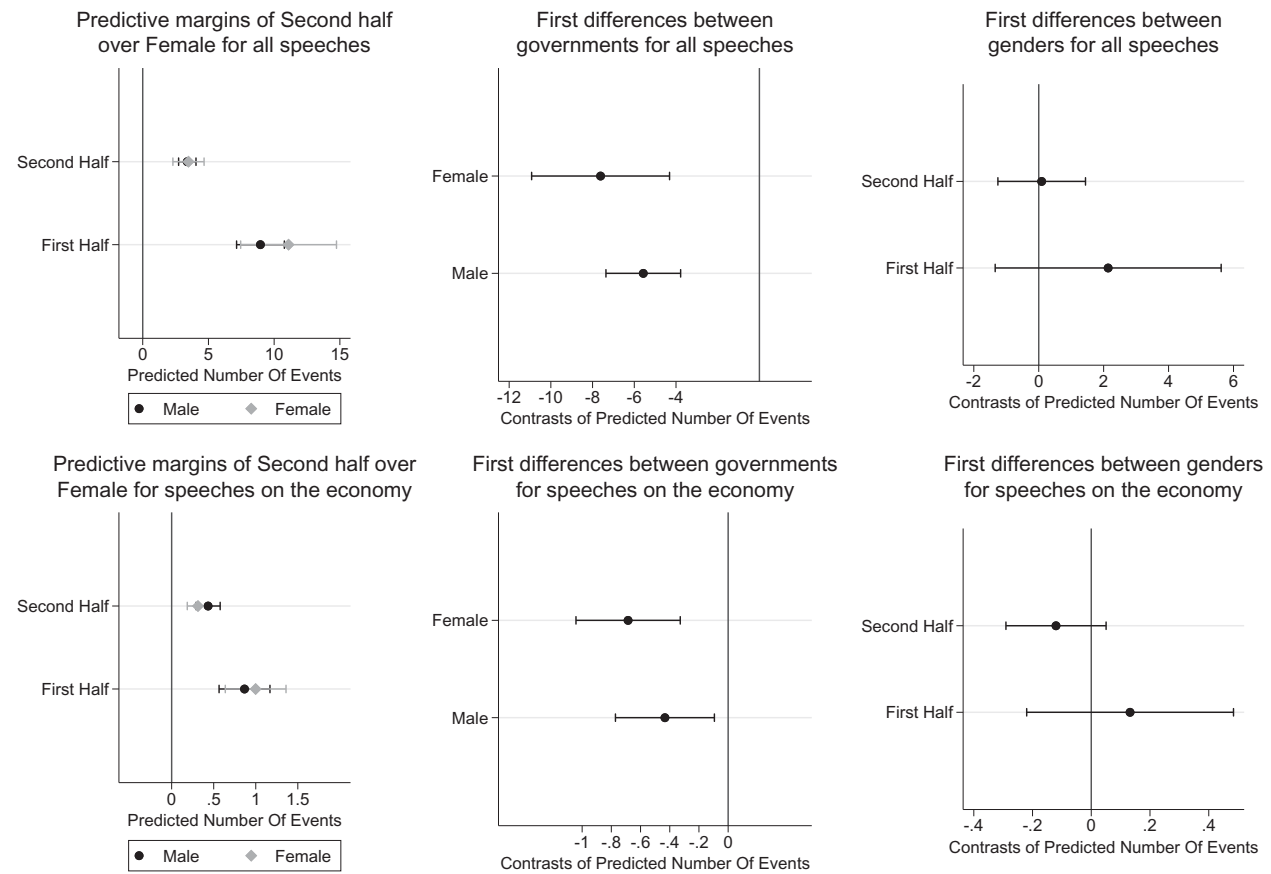
Figure 4 shows the results of our simulations, using the same model specification as in our main models (full results in Table A3 in the appendix). In support of our hypothesis and contrary to the alternative explanation, it does not seem like the Mutharika regime was particularly hostile toward women parliamentarians. On the contrary, the middle panel on the top row of Figure 4 shows that women spoke significantly more under Mutharika than they did under Muluzi. Furthermore, the middle panel on the bottom row shows that women spoke significantly more on the economy under Mutharika than they did under Muluzi.

Do Women Generally Speak More Frequently Later in the Parliamentary Term?

One potentially problematic aspect of our research design is that we compare women early on in the parliamentary term with the same women later in the same term. Although we control for earlier parliamentary experience, it may be that women without experience are more reluctant to speak early on in the term than are men without experience. Research on gender

differences in communication styles has argued that women improve their ability to navigate gendered communicational expectations as they gain in experience (Pfafman and McEwan 2014).

To evaluate this potential alternative explanation, we used additional data from the two earlier parliamentary terms in our dataset (1999–2004 and 2004–2009). We divided the terms into two periods, breaking them at the half-point of the term. We thus compare women and men in the early months of the 1999 and 2004 parliaments with the same women and men in the late months of the 1999 and 2004 parliaments. Results are displayed in Figure 5 (full table in the appendix Table A4). Contrary to this alternative explanation, we do not find that women generally speak more frequently later in the parliamentary term. In fact, the opposite is true. Looking at the middle panel of the top row, we find that in the earlier Malawian parliaments both women and men actually spoke significantly less in the later part of the parliamentary term than they did in the earlier part of the same term. Looking at the middle panel of the lower row, we find that the same is true if we focus particularly on the economy.

FIGURE 5. Difference Early and Late Parliamentary Terms in Muluzi and Mutharika I

Note: The 95% confidence intervals are included

A Party Leader Rather than a Presidential Symbolic Effect?

President Banda was not only the president but also the leader of a major party in parliament: the Peoples' Party (PP). No MPs were elected on a PP ticket; the party was founded by Joyce Banda in July 2011, two years after the 2009 election and only 10 months before the start of the Banda presidency. Although a few early MPs joined the party before April 2012, most PP members joined the party after Banda became president (Svåsand 2015). It is commonplace in Malawi politics that opposition MPs and independents join the ruling party to gain access to executive resources (Young 2014).

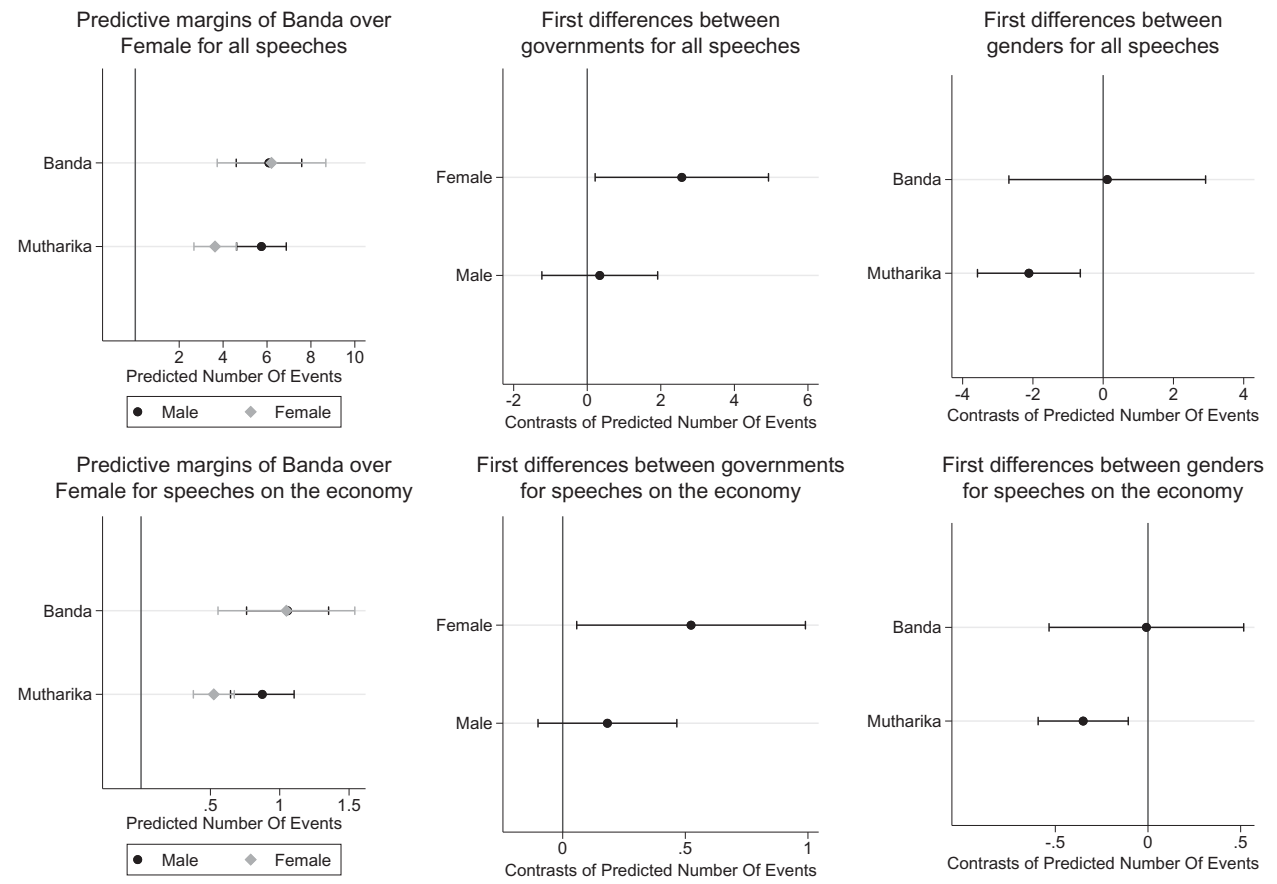
Although empirical literature on female party leaders has not unequivocally found that female party leaders are more inclined to promote the careers of female politicians (O'Brien et al. 2015), some research has argued that gender dynamics within parliamentary groups may affect female legislative behavior. For instance, Bäck and Debus (2019) hypothesize that women MPs in parties with higher female representation speak more frequently than their female colleagues do in more male-dominated parties. It is

possible that the Banda effect can be attributed to women within PP being empowered by their female party leader and that the increased speech frequency of women MPs is related to the PP gaining in parliamentary numeric strength after Banda became president.

To investigate this possibility, we reran the analysis excluding all PP members of parliament from the analysis. The results are displayed in Figure 6. The results of our analysis remain substantially unchanged even when excluding PP MPs from the analysis.

To further probe the importance of political parties, Figure 7 shows the change in the female/male speech ratios for PP's two main party rivals, DPP and MCP, during the Mutharika and Banda periods, respectively. It is possible that opposition to women's participation would increase particularly in the DPP as misogynistic opposition to the female president grew stronger. However, this is not what we find. On the contrary, the female to male speech ratio increased in both DPP and MCP during the Banda period. Looking at nonsenior, newcomer MPs, the group that makes up the vast majority of parliament, the average DPP female MP made only 67% as many speeches as the average male DPP MP during the Mutharika period, compared with 92% during the Banda period. The corresponding

FIGURE 6. Difference between the Banda and Mutharika Periods, Excluding PP MPs



Note: The 95% confidence intervals are included

averages were 71% for MCP female MPs during the Mutharika period and 91% during the Banda period. All in all, this additional analysis confirms that the symbolic effect of the female president is not confined to her own political party, but runs across parties.

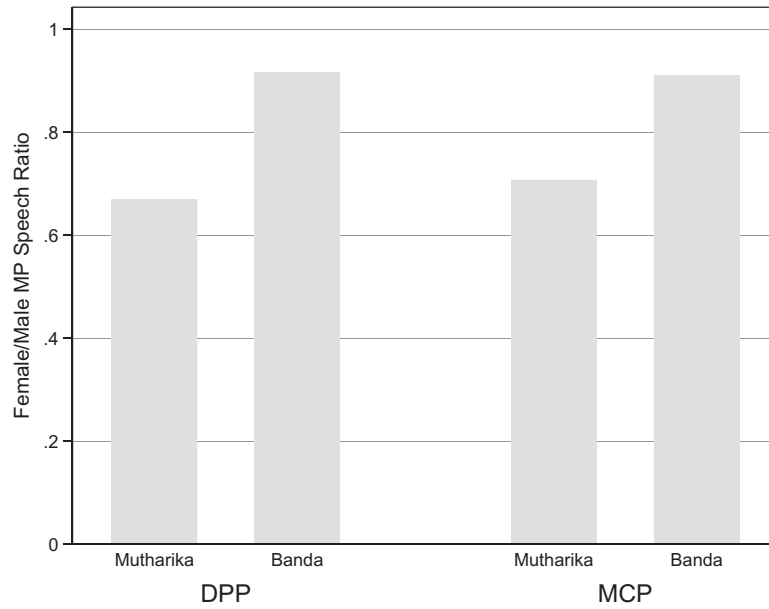
Do Women Speak Less During Democratic Erosion?

The second Mutharika term was characterized by political instability and creeping authoritarianism. As the executive was put under intense pressure, the regime resorted to political repression and strengthened executive control. The extent of Malawi’s democratic backsliding was most acutely felt at the time of the July 2011 demonstrations, at which point Malawi police shot and killed 11 pro-democracy protesters (Cammack 2012). After Mutharika’s death, Malawi’s democracy normalized under the reign of President Banda. Banda implemented important reforms to scale back many of the draconian laws put in place by the Mutharika regime and restore the freedom of the press (Chinsinga 2015). Could it be that women were particularly reluctant to speak in parliament during Mutharika due to eroding democracy? To investigate this alternative explanation,

we study an earlier episode of democratic erosion in Malawian history, the time of President Muluzi’s third-term presidential bid. This period lasted roughly between January 2001 and March 2003¹³ and has many similarities with the backsliding period under Mutharika (VonDoepp 2005). For Muluzi to pave the way for a constitutional amendment to allow for a third term in office, the government increased repression on opposition, journalists, and civil society (Cammack 2012). During the period, Malawi was downgraded on Freedom House’s Freedom scale from a rating of 3 to a rating of 4 on both Civil Liberties and Political Rights (higher values represent lower levels of freedom). If we find that women speak less frequently during the period of democratic backsliding under Muluzi, it could be that the effect observed in our main analysis is a consequence of the shrinking democratic space in Mutharika’s second term. Figure 8 compares the frequency of speeches between men and women during President Muluzi’s second term, comparing the period of “democratic backsliding” (January 2001–March 2003) with that of

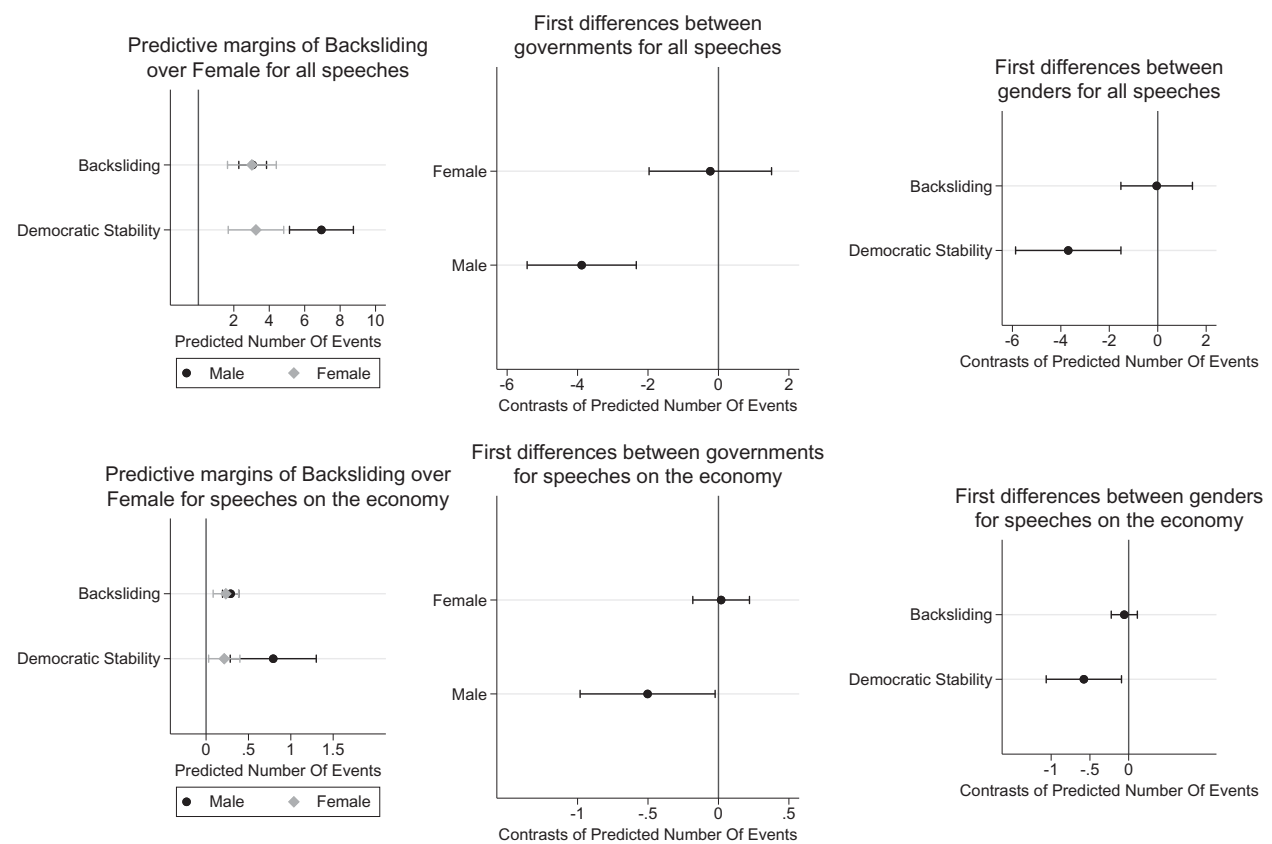
¹³ Starting with the first serious floating of the third-term agenda and ending with the final recognition that Muluzi would not run for reelection (VonDoepp 2005).

FIGURE 7. Female to Male Speech Ratio for DPP and MCP in Mutharika and Banda Periods



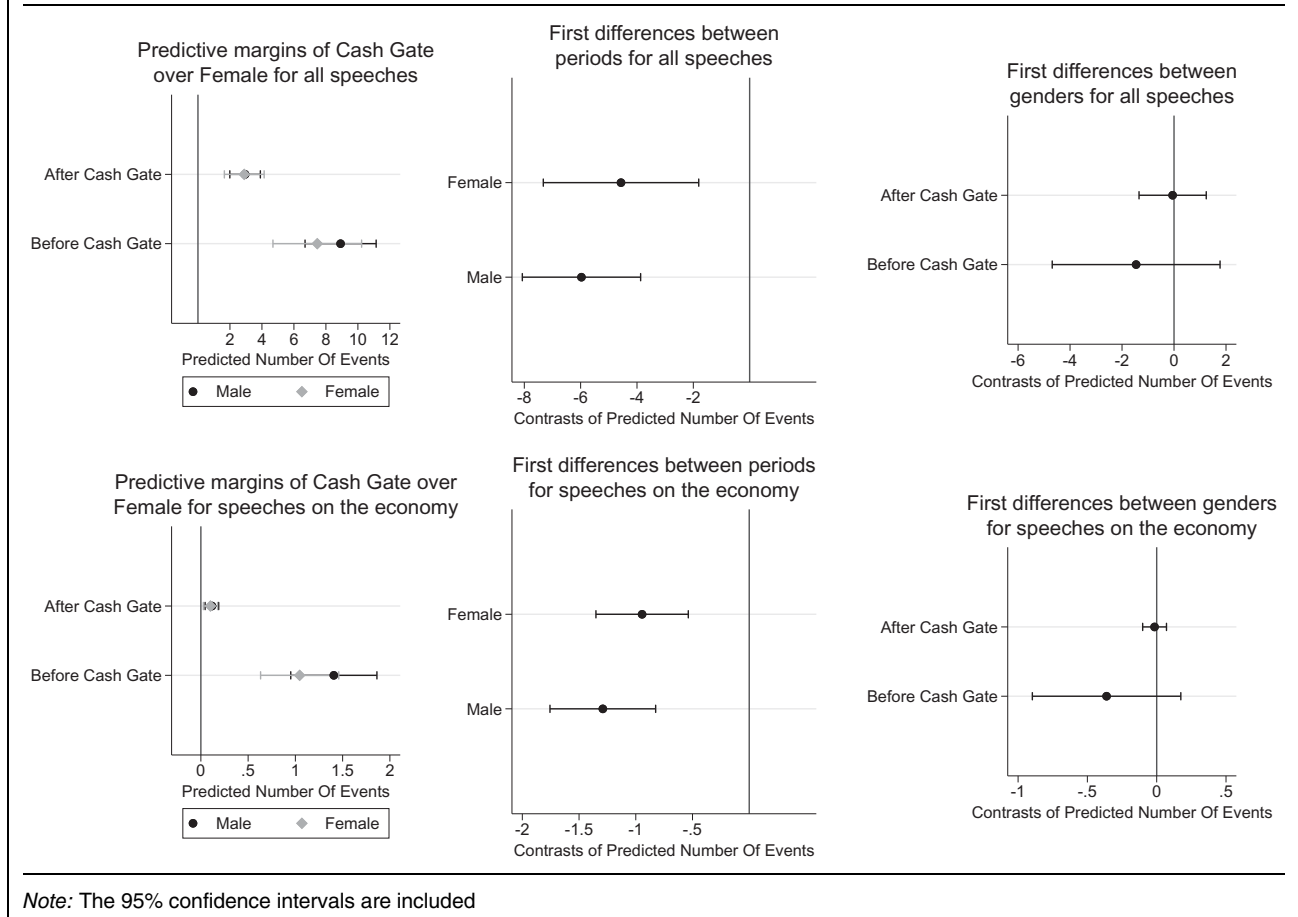
Note: Bars represent male/female speech ratio for nonsenior, newcomer MPs.

FIGURE 8. Difference between the Democratic Stability and Democratic Erosion Period during the Muluzi Regime



Note: The 95% confidence intervals are included

FIGURE 9. Difference between the Pre- and Post-Cashgate period during the Banda Regime



“democratic stability” (June 1999–January 2001 and March 2003–May 2004).¹⁴

As with the other alternative explanations, we do not find any support. The middle upper-row panel shows that while men spoke significantly less during the backsliding period, there was no difference for women MPs. Similarly, the right-hand panel on the upper row shows that while women spoke significantly less than men did during the democratic stability period, there was no statistically significant difference during the backsliding period. Looking particularly at speeches on the economy, the middle panel in the bottom row of Figure 8 shows that while men spoke significantly less during the backsliding period than they did during the stability period, there is no statistically significant difference between the periods for women. All in all, these models show that, in fact, men’s advantage in speech making vis-à-vis women is greater during the stability period than it is during the backsliding period.

A Banda Backlash?

While a woman president challenges gendered stereotypes, female political advancements may also enhance

the degree to which male MPs perceive their female colleagues as a threat to their own political advancement. For this reason, we might experience a backlash against female MPs (Krook 2015). Although we have not observed a general backlash, it is possible that the symbolic effect of a female president is highly related to the popularity of the president. In cases where the female president is perceived as performing poorly, women politicians might collectively be blamed and gender stereotypes reinforced. Over time, Banda’s popularity vanished and prominent scholars of Malawi politics such as Tiyesere Mercy Chikapa (2016) have argued that Banda’s perceived failure had negative repercussions for other female politicians in their effort to gain reelection. Is it the case that the symbolic effect disappears as Banda’s popularity diminished?

Although we do not have monthly data on President Banda’s approval ratings, Afrobarometer data collected shortly after Banda’s installation and just before the 2014 election make clear that Banda’s popularity was reduced significantly during her term in office (Dulani and Chunga 2015). It is hard to pinpoint exactly when Banda’s popularity drops, but it is widely believed that the Cashgate corruption scandal revealed in September 2013 was a decisive moment associated with Banda’s fall from grace (Zimmerman 2015). In Figure 9, we break the Banda presidency into a pre-Cashgate and a post-Cashgate

¹⁴ Full results in Table A5.

period. Although women speak less post-Cashgate, we see an even larger reduction in the number of speeches for men. In fact, the predicted difference in the number of speeches between men and women is smaller in the post-Cashgate period than it is in the pre-Cashgate period (the difference between men and women remains statistically insignificant in both periods). In other words, the intraelite symbolic effect persists despite the female president's reduced popularity.

CONCLUSION

Although women's descriptive representation in parliament has increased globally, women are still lacking in thick representation (Hassim 2006). Much important work has been conducted to describe the form of obstacles faced by female legislators around the world, but we still need more research that identifies paths toward enhanced thick female representation. As argued by previous researchers, increasing female descriptive representation is insufficient (Childs and Krook 2009; Weldon 2002). Women legislators, even in practically gender-balanced parliaments, still possess less voice than their male colleagues do in vital parliamentary debates (Bäck, Debus, and Müller 2014). This paper has offered a new path toward enhanced thick parliamentary representation: intraelite symbolic representation.

We argue that elite women will find inspiration from other more successful women within the same political hierarchies. The presence of successful women at high positions in political hierarchies has the ability to redefine the role of women in politics, challenge perceptions of male and female leadership, and create a general momentum for women in politics. Looking particularly at the importance of Malawi's first-ever female president, Joyce Banda, we showed that having a woman president led to women occupying more space in parliamentary debates and being less confined in their parliamentary roles.

To be sure, our study still leaves many questions about intraelite symbolic representation to be answered by future work. Most importantly, further explorations of causal mechanisms would certainly help in establishing more precise links between female leadership and women's empowerment within political institutions. Much of this work is likely to be at the micro level and should also consider studying the effect of female leadership on male and female elites, respectively (e.g., Schwindt-Bayer 2010). More work is particularly needed on the ways in which male elites may respond negatively to female political empowerment (Krook 2015).

Second, future work should also consider similar intraelite symbolic effects at other levels of political hierarchies and within institutions other than national parliaments. For instance, research has pondered the ways in which female chiefs (Bauer 2016) or female justices (Dawuni and Kang 2015) may inspire female leadership within other political institutions.

Third, looking more specifically at legislative politics, more work is also needed to study the ways in which

formal institutions may mitigate positive intraelite symbolic effects. Particularly, one may hypothesize that such effects may be affected by the presence of gender quotas (Clayton, Josefsson, and Wang 2014) or be quelled by highly structured parliamentary speech-making procedures giving significant power to male gatekeepers (Proksch and Slapin 2012).

Fourth, this paper studies the effects of a first-ever female president. The novelty of a first-ever female president is likely to have the greatest short-term influence on female parliamentary behavior (Schwindt-Bayer and Reyes-Housholder 2017). Nevertheless, future work from countries where female executive power is more normalized through repeated and/or long spells of female executive power may study both the short-term effects of having a female executive in office and the long-term effects of accumulated experience of female executive power (see also Beauregard 2018).

Overall, we believe that this study has wide implications for debates on women in politics. Our findings stress the interconnected nature of political representation at various levels of government and highlight the need to study these institutions in tandem. Previous research has questioned the role of women in executive positions in enhancing women's descriptive representation in legislatures and cabinets (Chikapa 2016; O'Brien et al. 2015). Our argument is considerably more optimistic about the role of female executives in enhancing women's political representation. Focusing on thick, rather than thin, representation, we show how a female president may enhance the political role of women by changing the nature of political representation for women already present within male-dominated political institutions. The concept of intraelite symbolic representation was applied here to the highest levels of government, but there is little reason to believe that such effects are limited to this level. Our results confirm that real political empowerment diffuses between institutional levels and that a singular focus on increasing women's descriptive representation in parliament may not be enough for reaching political gender equality within contemporary democracies.

SUPPLEMENTARY MATERIALS

To view supplementary material for this article, please visit <http://dx.doi.org/10.1017/S000305542100006X>.

DATA AVAILABILITY STATEMENT

Replication files are available at the American Political Science Dataverse: <https://doi.org/10.7910/DVN/DZWOCK>.

ACKNOWLEDGEMENTS

Previous versions of this paper were presented at the 2018 Annual Meeting of the American Political Science Association, the 2018 University of Aarhus Challenges to Democratization Workshop, the 2019 Gender, Political

Representation, and Development in Africa Conference at University of Ghana, the 2019 Comparative Agendas Project Conference in Budapest, and at the Michigan State University Comparative Politics Seminar. We are grateful for invaluable comments and support provided by Frank Baumgartner, Sarah Brierley, Ruth Carlitz, Nicholas Cheeseman, Aaron Erlich, Erica Frantz, Manolis Frantzeskakis, Hamida Harrison, Andrew Kerner, Staffan Lindberg, Anna Lührmann, Valeriya Mechkova, Shahryar Minhas, Nandini Patel, Christina Scheller, Merete Bech Seeberg, Peter VonDoepf, and three anonymous reviewers. We are also hugely indebted to the Chief Parliamentarian Librarian in Lilongwe, Maxwell Banda, and the Malawi Clerk of Parliament, Fiona Kalemba. Invaluable research assistance was provided in Malawi by Felix Chauluka and Fannie Nthakomwa. We are also grateful to two dedicated teams of undergraduate research assistants: one team at University of Missouri, including Andrew Gilstrap, Trent Hall, Katie Mechlin, Seamus Saunders, Tricia Swartz, Momoko Tamamura, Mandy Trevor, Hunter Windholtz, and Hanna Wimberly and one team at Michigan State University including Layla Brooks, Cooper Burton, Isaac Cinzori, and Anthony Luongo.

CONFLICT OF INTEREST

The authors declare no ethical issues or conflicts of interest in this research.

ETHICAL STANDARDS

The authors affirm that this research did not involve human participants.

REFERENCES

- Adams, Melinda, and Kristin Wylie. 2020. "Transnational Organizing, the Boosting Effect, and Women's Legislative Caucuses in Africa." *Politics, Groups, and Identities* 8 (3): 615–26.
- Afrobarometer. 2014. "Malawi, Round 6" available at <http://www.afrobarometer.org>.
- Ai, Chunrong, and Edward C. Norton. 2003. "Interaction Terms in Logit and Probit Models." *Economics Letters* 80 (1): 123–29.
- Alexander, Amy C. 2012. "Change in Women's Descriptive Representation and the Belief in Women's Ability to Govern: A Virtuous Cycle." *Politics & Gender* 8 (4): 437–64.
- Alexander, Amy C., and Farida Jalalzai. 2020. "Symbolic Empowerment and Female Heads of States and Governments: A Global Multilevel Analysis." *Politics, Groups, and Identities* 8 (1): 24–43.
- Amanatullah, Emily T., and Catherine H. Tinsley. 2013. "Punishing Female Negotiators for Asserting Too Much. ... Or Not Enough: Exploring Why Advocacy Moderates Backlash against Assertive Female Negotiators." *Organizational Behavior and Human Decision Processes* 120 (1): 110–22.
- Amundsen, Inge, and Happy Kayuni. 2016. Women in Politics in Malawi: An Introduction. Chap. 1 in *Women in Politics in Malawi*, eds. Inge Amundsen and Happy Kayuni Bergen. Zomba: CMI and PAS.
- Arriola, Leonardo R., and Martha C. Johnson. 2014. "Ethnic Politics and Women's Empowerment in Africa: Ministerial Appointments to Executive Cabinets." *American Journal of Political Science* 58 (2): 495–510.
- Atkeson, Lonna Rae. 2003. "Not All Cues Are Created Equal: The Conditional Impact of Female Candidates on Political Engagement." *The Journal of Politics* 65 (4): 1040–61.
- Banda, Joyce. 2013. "Address by Her Excellency Dr. Joyce Banda." Address to the 102nd International Labour Conference, Geneva, Switzerland, June 12. https://www.ilo.org/ilc/ILCSessions/previous-sessions/102/media-centre/speeches/WCMS_215752/lang-en/index.htm.
- Barnes, Tiffany D., and Stephanie M. Burchard. 2013. "'Engendering' Politics: The Impact of Descriptive Representation on Women's Political Engagement in Sub-Saharan Africa." *Comparative Political Studies* 46 (7): 767–90.
- Barnes, Tiffany D., and Michelle M. Taylor-Robinson. 2017. "Women Cabinet Ministers in Highly Visible Posts and Empowerment of Women: Are the Two Related?" In *Measuring Women's Empowerment Across the Globe*, eds. Amy C. Alexander, Catherine Bolzendahl, and Farida Jalalzai, 229–55. Cham, Switzerland: Palgrave.
- Bauer, Gretchen. 2006. Namibia: Losing Ground without Mandatory Quotas. Chap. 4 in *Women in African Parliaments*, eds. Gretchen Bauer and Hannah E. Britton. Boulder, CO: Lynne Rienner Publishers.
- Bauer, Gretchen. 2016. "What is Wrong with a Woman Being Chief? Women Chiefs and Symbolic and Substantive Representation in Botswana." *Journal of Asian and African Studies* 51 (2): 222–37.
- Bauer, Gretchen. 2019. "Women in African Parliament: Progress and Prospects." In *The Palgrave Handbook of African Women's Studies*, eds. Olajumoke, Yacob-Haliso and Toyin Falola, 1–18. New York: Palgrave.
- Bauer, Gretchen, and Hannah Evelyn Britton. 2006. "Women in African Parliaments: A Continental Shift?" Chap. 1 in *Women in African Parliaments*, eds. Gretchen Bauer and Hannah E. Britton. Boulder, CO: Lynne Rienner Publishers.
- Baumgartner, Frank R., Christoffer Green-Pedersen, and Bryan D. Jones. 2006. "Comparative Studies of Policy Agendas." *Journal of European Public Policy* 13 (7): 959–74.
- Beaman, Lori, Raghavendra Chattopadhyay, Esther Duflo, Rohini Bande, and Petia Topalova. 2009. "Powerful Women: Does Exposure Reduce Bias?" *The Quarterly Journal of Economics* 124 (4): 1497–540.
- Beauregard, Katrine. 2018. "Women's Representation and Gender Gaps in Political Participation: Do Time and Success Matter in a Cross-national Perspective?" *Politics, Groups, and Identities* 6 (2): 237–63.
- Beckwith, Karen, and Kimberly Cowell-Meyers. 2007. "Sheer Numbers: Critical Representation Thresholds and Women's Political Representation." *Perspectives on Politics* 5 (3): 553–65.
- Blumenau, Jack. 2019. "The Effects of Female Leadership on Women's Voice in Political Debate." *British Journal of Political Science*. <https://doi.org/10.1017/S0007123419000334>.
- Bäck, Hanna, Marc Debus, and Jochen Müller. 2014. "Who Takes the Parliamentary Floor? The Role of Gender in Speech-making in the Swedish Riksdag." *Political Research Quarterly* 67 (3): 504–18.
- Bäck, Hanna, and Marc Debus. 2019. "When Do Women Speak? A Comparative Analysis of the Role of Gender in Legislative Debates." *Political Studies* 67 (3): 576–96.
- Brambor, Thomas, William Roberts Clark, and Matt Golder. 2006. "Understanding Interaction Models: Improving Empirical Analyses." *Political Analysis* 14 (1): 63–82.
- Burnet, Jennie E. 2011. "Women Have Found Respect: Gender Quotas, Symbolic Representation, and Female Empowerment in Rwanda." *Politics & Gender* 7 (3): 303–34.
- Cammack, Diana. 2012. "Malawi in Crisis, 2011–2012." *Review of African Political Economy* 39 (132): 375–88.
- Childs, Sarah, and Lena Krook Mona. 2008. "Critical Mass Theory and Women's Political Representation." *Political Studies* 56 (3): 725–36.
- Childs, Sarah, and Mona Lena Krook. 2009. "Analysing Women's Substantive Representation: From Critical Mass to Critical Actors." *Government and Opposition* 44 (2): 125–45.
- Chimunthu Banda, Henry. 2017. *Malawi Parliament: Origins, Reforms and Practice*. Lilongwe: Pan-African Publishers.
- Chinsinga, Blessings. 2015. "The Political Economy Context." Chap. 2 in *The Malawi 2014 Tripartite Elections: Is Democracy*

- Maturing?* eds. Nandini Patel and Michael Wahman. Malawi: National Initiative for Civic Education Press.
- Chikapa, Tiyesere Mercy. 2016. "The 'Joyce Banda Effect': Explaining the Discrepancy between Public Opinion and Voter Behaviour." Chap. 5 in *Women in Politics in Malawi*, eds. Inge Amundsen and Happy Kayuni. Bergen, Norway: CMI.
- Chikaipa, Victor. 2019. "Caring Mother or Weak Politician? A Semiotic Analysis of Editorial Cartoon Representations of President Joyce Banda in Malawi Newspapers." *Critical Arts* 33 (2): 14–28.
- Chiweza, Asiyati Lorraine. 2016. "Women in Local Government: A Potential Arena for Women's Substantive Representation." *CMI Briefing* 15: 13. <https://www.cmi.no/publications/5930-women-in-local-government-potential-malawi>.
- Chiweza, Asiyati Lorraine, Vibeke Wang, and Ann Maganga. 2016. "The Women's Parliamentary Caucus: Promoting Cross-Party Substantive Representation." Chap. 4 in *Women in Politics in Malawi*, eds. Inge Amundsen and Happy Kayuni. Bergen, Norway: CMI.
- Clayton, Amanda. 2015. "Electoral Gender Quotas, Female Leadership, and Women's Political Engagement: Evidence from a Randomized Experiment." *Comparative Political Studies* 48 (3): 333–69.
- Clayton, Amanda, Cecilia Josefsson, and Vibeke Wang. 2014. "Present without Presence? Gender, Quotas and Debate Recognition in the Ugandan Parliament." *Representation* 50 (3): 379–92.
- Clayton, Amanda, Cecilia Josefsson, and Vibeke Wang. 2017. "Quotas and Women's Substantive Representation: Evidence from a Content Analysis of Ugandan Plenary Debates." *Politics & Gender* 13 (2): 276–304.
- Clayton, Amanda, Cecilia Josefsson, Robert Mattes, and Shaheen Mozaffar. 2019. "In Whose Interest? Gender and Mass-Elite Priority Congruence in Sub-Saharan Africa." *Comparative Political Studies* 52 (1): 69–101.
- Coppedge, Michael, John Gerring, Carl Henrik Knutsen, Staffan I. Lindberg, Jan Teorell, David Altman, Michael Bernhard, et al. 2020. V-Dem Dataset v10 [Country-Year/Country-Date] Varieties of Democracy (V-Dem) Project. <https://doi.org/10.23696/vdemds20>.
- Dahlerup, Drude. 1988. "From a Small to a Large Minority: Women in Scandinavian Politics." *Scandinavian Political Studies* 11 (4): 275–98.
- Dawuni, Josephine, and Alice Kang. 2015. "Her Ladyship Chief Justice: The Rise of Female Leasers of the Judiciary in Africa." *Africa Today* 62 (2): 45–69.
- Devlin, Jacob, Ming-Wei Chang, Kenton Lee, and Kristina Toutanova. 2018. "Bert: Pre-training of deep bidirectional transformers for language understanding." [arXiv:1810.04805](https://arxiv.org/abs/1810.04805).
- Dolan, Kathleen, and Lynne E. Ford. 1997. "Change and Continuity among Women State Legislators: Evidence from Three Decades." *Political Research Quarterly* 50 (1): 137–51.
- Dolan, Kathleen. 2006. "Symbolic Mobilization? The Impact of Candidate Sex in American Elections." *American Political Research* 34 (6): 687–704.
- Dulani, Boniface, and Joseph Chunga. 2015. "When is Incumbency No Longer an Advantage?" Chap. 14 in *Is Democracy Maturing? The Malawi 2014 Tripartite Elections*, eds. Nandini Patel and Michael Wahman. Malawi: National Initiative for Civic Education Press.
- Erikson, Joseфина, and Cecilia Josefsson. 2019. "The Legislature as a Gendered Workplace: Exploring Members of Parliament's Experiences of Working in the Swedish Parliament." *International Political Science Review* 40 (2): 197–214.
- Fernandes, Jorge M., Cristina Leston-Bandeira, and Carsten Schwemmer. 2018. "Election Proximity and Representation Focus in Party-constrained Environments." *Party Politics* 24 (6): 674–85.
- Ferree, Myra Marx. 2006. "Angela Merkel: What Does it Mean to Run as a Woman?" *German Politics and Society* 78 (24): 93–107.
- Fox, Richard L., and Jennifer L., Lawless. 2004. "Entering the Arena: Gender and the Decision to Run for Office." *American Journal of Political Science* 48 (2): 264–80.
- Franceschet, Susan, Mona Lena Krook, and Jennifer M. Piscopo. 2012. *The Impact of Gender Quotas*. Oxford: Oxford University Press.
- Franceschet, Susan, Jennifer M. Piscopo, and Gwynn Thomas. 2016. "Supermadres, Maternal Legacies and Women's Political Participation in Contemporary Latin America." *Journal of Latin American Studies* 48 (1): 1–32.
- Gilardi, Fabrizio. 2015. "The Temporary Importance of Role Models for Women's Political Representation." *American Journal of Political Science* 59 (4): 957–70.
- Hassim, Shireen. 2006. "The Virtuous Circle of Representation: Women in African Parliaments." Chap. 8 in *Women in African Parliaments*, eds. Gretchen Bauer and Hannah E. Britton. Boulder, CO: Lynne Rienner Publishers.
- Hayes, Danny, and Jennifer L. Lawless. 2015. "A Non-Gendered Lens? Media, Voters, and Female Candidates in Contemporary Congressional Elections." *Perspectives on Politics* 13 (1): 95–118.
- Heath, Roseanna Michelle, Leslie A. Schwindt-Bayer, and Michelle M. Taylor-Robinson. 2005. "Women on the Sidelines: Women's Representation on Committees in Latin American Legislatures." *American Journal of Political Science* 49 (2): 420–36.
- Heilman, Madeline E., and Tyler G. Okimoto. 2007. "Why Are Women Penalized for Success at Male Tasks? The Implied Communitarity Deficit." *Journal of Applied Psychology* 92 (1): 81–92.
- Hopkins, Daniel, and Gary King. 2007. "Extracting Systematic Social Science Meaning from Text." Working paper. <http://www.afsp.msh-paris.fr/congres2007/tables rondes/textes/tr1sess3kinghopkins.pdf>.
- Jalalzai, Farida. 2008. "Women Rule: Shattering the Executive Glass Ceiling." *Politics & Gender* 4 (2): 205–31.
- Jalalzai, Farida. 2013. *Shattered, Cracked, or Firmly Intact? Women and the Executive Glass Ceiling World Wide*. Oxford: Oxford University of Press.
- Karp, Jeffrey A., and Susan A. Banducci. 2008. "When Politics Is Not Just a Man's Game: Women's Representation and Political Engagement." *Electoral Studies* 27 (1): 105–15.
- Kayuni, Happy M., and Ragnhild L. Muriaas. 2014. "Alternatives to Gender Quotas: Electoral Financing of Women Candidates in Malawi." *Representation* 50 (3): 393–404.
- Krook, Mona Lena. 2010. *Quotas for Women in Politics: Gender and Candidate Selection Reform Worldwide*. Oxford University Press.
- Krook, Mona Lena. 2015. "Empowerment versus Backlash? Gender Quotas and Critical Mass Theory." *Politics, Groups and Identities* 3 (1): 184–88.
- Krook, Mona Lena, and Diana Z. O'Brien. 2012. "All the President's Men? The Appointment of Female Cabinet Ministers Worldwide." *The Journal of Politics* 74 (3): 840–55.
- Lawless, Jennifer. 2015. "Female Candidates and Legislators." *Annual Review of Political Science* 18: 349–66.
- Lechner, Michael. 2010. "The Estimation of Causal Effects by Difference-in-Difference Methods Estimation of Spatial Panels." *Foundations and Trends in Econometrics* 4 (3): 165–224.
- Liu, Shan-Jan Sarah. 2018. "Are Female Political Leaders Role Models? Lessons from Asia." *Political Research Quarterly*, 71(2), 255–69.
- Liu, Shan-Jan Sarah, and Lee Ann Banaszak. 2017. "Do Government Positions Held by Women Matter? A Cross-National Examination of Female Ministers' Impacts on Women's Political Participation." *Politics & Gender* 13 (1): 132–62.
- Lora-Kayambazinthu, Edrinnie, and Edith Kalilombe Shame. 2016. "A Different Yardstick: Gender and Leadership in Political Discourse." Chap. 6 in *Women in Politics in Malawi*, eds. Inge Amundsen and Happy Kayuni Bergen. Zomba: CMI and PAS.
- Lovenduski, Joni. 2005. *Feminizing Politics*. Cambridge: Polity.
- Lucas, Christopher, Richard A. Nielsen, Margaret E. Roberts, Brandon M. Stewart, Alex Storer, and Dustin Tingley. 2015. "Computer-assisted Text Analysis for Comparative Politics." *Political Analysis* 23 (2): 254–77.
- Malawi Parliamentary Hansard. 2012. "Malawi National Assembly: Parliamentary Debates (Hansard), Second Meeting- Forty-third Session, Twenty-Fourth Day Wednesday, 20th June 2012." Parliament of Malawi.
- Mansbridge, Jane. 1999. "Should Blacks Represent Blacks and Women Represent Women? A Contingent 'Yes.'" *Journal of Politics* 61 (3): 628–57.
- Morgan, Jana, and Melissa Buice. 2013. "Latin American Attitudes toward Women in Politics: The Influence of Elite Cues, Female Advancement, and Individual Characteristics." *American Political Science Review* 107 (4): 644–62.

- Muriaas, Ragnhild L., Vibeke Wang, Lindsay Benstead, Boniface Dulani, and Lise Rakner. 2019. "Why the Gender of Traditional Authorities Matters: Intersectionality and Women's Rights Advocacy in Malawi." *Comparative Political Studies* 52 (12): 1881–924.
- Nwankwor, Chiedo. 2019. "Women Cabinet Ministers' Substantive Representation in Africa." *Social Politics*. <https://doi.org/10.1093/sp/jxz042>.
- O'Brien, Diana Z., Matthew Mendez, Jordan Carr Peterson, and Jihyun Shin. 2015. "Letting Down the Ladder or Shutting the Door: Female Prime Ministers, Party Leaders, and Cabinet Ministers." *Politics & Gender* 11 (4): 689–717.
- Ott, Martin, and Fidelis Edge Kanyongolo. 2010. *Democracy in Progress: Malawi's 2009 Parliamentary and Presidential Elections*. Zomba: Kachere Books.
- Patel, Nandini, and Michael Wahman. 2015. "The Presidential, Parliamentary and Local Elections in Malawi, May 2014." *Africa Spectrum* 50 (1): 79–92.
- Pfafman, Tessa M., and Bree McEwan. 2014. "Polite Women at Work: Negotiating Professional Identity through Strategic Assertiveness." *Women's Studies in Communication* 37 (2): 202–19.
- Ponton, Douglas. 2010. "The Female Political Leader: A Study of Gender Identity in the Case of Margaret Thatcher." *Journal of Language and Politics* 9 (2): 195–218.
- Proksch, Sven-Oliver, and Jonathan B. Slapin. 2012. "Institutional Foundations of Legislative Speech." *American Journal of Political Science* 56 (3): 520–37.
- Reynolds, Andrew. 1999. "Women in the Legislatures and Executives of the World: Knocking at the Highest Glass Ceiling." *World Politics* 51 (4): 547–72.
- Robinson, Amanda, and Jessica Gottlieb. 2021. "How to Close the Gender Gap in Political Participation: Lessons from Matrilineal Societies in Africa." *British Journal of Political Science* 51 (1): 68–92.
- Schwindt-Bayer, Leslie A. 2010. *Political Power and Women's Representation in Latin America*. Oxford: Oxford University Press.
- Schwindt-Bayer, Leslie A., and Catherine Reyes-Housholder. 2017. "Citizen Response to Female Executives: Is It Sex, Novelty or Both?" *Politics, Groups, and Identity* 5 (3): 378–98.
- Shalaby, Marwa M., and Laila Elimam. 2020. "Women in Legislative Committees in Arab Parliaments." *Comparative Politics* 53 (1): 139–67.
- Simien, Evelyn M. 2015. *Historic Firsts: How Symbolic Empowerment Changes US Politics*. Oxford: Oxford University Press.
- Spiker, Julia. 2019. *Empowering Women: Global Voices of Rhetorical Influence*. London: Lexington Books.
- Stockemer, Daniel. 2011. "Women's Parliamentary Representation in Africa: The Impact of Democracy and Corruption on the Number of Female Deputies in National Parliaments." *Political Studies* 59 (3): 693–712.
- Stockemer, Daniel, and Maeve Byrne. 2011. "Women's Representation around the World: The Importance of Women's Participation in the Workforce." *Parliamentary Affairs* 65 (4): 802–21.
- Svåsand, Lars. 2015. "Political Parties: Fragmentation and Consolidation, Change and Stability." Chap. 6 in *The Malawi 2014 Tripartite Elections: Is Democracy Maturing?* eds. Nandini Patel and Michael Wahman. Malawi: National Initiative for Civic Education Press.
- Thames, Frank C., and Margaret S. Williams. 2013. *Contagious Representation: Women's Political Representation in Democracies around the World*. New York: New York University Press.
- Thomas, Sue. 1994. *How Women Legislate*. Oxford: Oxford University Press.
- Thomas, Gwynn, and Melinda Adams. 2010. "Breaking the Final Glass Ceiling: The Influence of Gender in the Elections of Ellen Johnson-Sirleaf and Michelle Bachelet." *Journal of Women, Politics, and Policy* 31 (2): 105–31.
- Tripp, Aili Mari, and Alice Kang. 2008. "The Global Impact of Quotas: On the Fast Track to Increased Female Legislative Representation." *Comparative Political Studies* 41 (3): 338–61.
- Tripp, Aili Mari. 2015. *Women and Power in Post-Conflict Africa*. Cambridge: Cambridge University Press.
- Tjøraasen, Marianne. 2019. "Gender Parity and the Symbolic Representation of Women in Senegal." *The Journal of Modern African Studies* 57 (3): 459–81.
- Verge, Tània, and Raquel Pastor. 2018. "Women's Political Firsts and Symbolic Representation." *Journal of Women, Politics & Policy* 39 (1): 26–50.
- VonDoepp, Peter. 2005. "Party Cohesion and Fractionalization in New African Democracies: Lessons from Struggles over Third-Term Amendments." *Studies in Comparative International Development* 40 (3): 65–87.
- Wahman, Michael, and Layla Brooks. 2021. "A Statistical Analysis of the 2019 Malawi Presidential and Parliamentary Vote: Persistence, Change, and Electoral Geography." Chap. 14 in *Democracy Tested: The Case of Malawi's 2019 Tripartite Elections*, eds. Kanyongolo, Edge Fidelis and Nandini Patel. Pretoria: Pretoria University Press.
- Wahman, Michael, Nikolaos Frantzeskakis, and Tevfik Murat Yildirim. 2021. "Replication Data for: From Thin to Thick Representation: How a Female President Shapes Female Parliamentary Behavior." Harvard Dataverse. Dataset. <https://doi.org/10.7910/DVN/DZWOCK>.
- Wang, Vibeke. 2014. "Tracing Gender Differences in Parliamentary Debates: A Growth Curve Analysis of Ugandan MPs' Activity Levels in Parliamentary Sessions, 1998–2008." *Representation* 50 (3): 365–77.
- Weldon, S. Laurel. 2002. "Beyond Bodies: Institutional Sources of Representation for Women in Democratic Policymaking." *The Journal of Politics* 64 (4): 1153–74.
- Wolak, Jennifer. 2020. "Descriptive Representation and the Political Engagement of Women." *Politics & Gender* 16 (2): 339–62.
- Wolbrecht, Christina, and David E. Campbell. 2007. "Leading by Example: Female Members of Parliament as Political Role Models." *American Journal of Political Science* 51 (4): 921–39.
- Wängnerud, Lena. 2009. "Women in Parliaments: Descriptive and Substantive Representation." *Annual Review of Political Science* 12: 51–69.
- Yoon, Mi Yung. 2011. "More Women in the Tanzanian Legislature: Do Numbers Matter?" *Journal of Contemporary African Studies* 29 (1): 83–98.
- Young, Daniel. 2014. "An Initial Look into Party Switching in Africa: Evidence from Malawi." *Party Politics* 20 (1): 105–15.
- Zetterberg, Pär. 2009. "Do Gender Quotas Foster Women's Political Engagement? Lessons from Latin America." *Political Research Quarterly* 62 (4): 715–30.
- Zimmerman, Brigitte. 2015. Voter Response to Scandal: Cashgate. Chap. 13 in *The Malawi 2014 Tripartite Elections: Is Democracy Maturing?* eds. Nandini Patel and Michael Wahman. Lilongwe: The National Initiative for Civic Education.