

A population-scale temporal case–control evaluation of COVID-19 disease phenotype and related outcome rates in patients with cancer in England (UKCCP)

Starkey, Thomas; Ionescu, Maria C.; Tilby, Michael; Little, Martin; Burke, Emma; Fittall, Matthew W.; Khan, Sam; Liu, Justin K. H.; Platt, James R.; Mew, Rosie; Tripathy, Arvind R.; Watts, Isabella; Williams, Sophie Therese; Appanna, Nathan; Al-Hajji, Youssra; Barnard, Matthew; Benny, Liza; Burnett, Alexander; Bytyci, Jola; Cattell, Emma L.

DOI:

[10.1038/s41598-023-36990-9](https://doi.org/10.1038/s41598-023-36990-9)

License:

Creative Commons: Attribution (CC BY)

Document Version

Publisher's PDF, also known as Version of record

Citation for published version (Harvard):

Starkey, T, Ionescu, MC, Tilby, M, Little, M, Burke, E, Fittall, MW, Khan, S, Liu, JKH, Platt, JR, Mew, R, Tripathy, AR, Watts, I, Williams, ST, Appanna, N, Al-Hajji, Y, Barnard, M, Benny, L, Burnett, A, Bytyci, J, Cattell, EL, Cheng, V, Clark, JJ, Eastlake, L, Gerrand, K, Ghafoor, Q, Grumett, S, Harper-Wynne, C, Kahn, R, Lee, AJX, Lomas, O, Lydon, A, Mckenzie, H, Panneerselvam, H, Pascoe, JS, Patel, G, Patel, V, Potter, VA, Randle, A, Rigg, AS, Robinson, TM, Roynance, R, Roques, TW, Rozmanowski, S, Roux, RL, Shah, K, Sheehan, R, Sintler, M, Swarup, S, Taylor, H, Tillett, T, Tuthill, M, Williams, S, Ying, Y, Beggs, A, Iveson, T, Lee, SM, Middleton, G, Middleton, M, Protheroe, A, Fowler, T, Johnson, P & Lee, LYW 2023, 'A population-scale temporal case–control evaluation of COVID-19 disease phenotype and related outcome rates in patients with cancer in England (UKCCP)', *Scientific Reports*, vol. 13, no. 1, 11327. <https://doi.org/10.1038/s41598-023-36990-9>

[Link to publication on Research at Birmingham portal](#)

General rights

Unless a licence is specified above, all rights (including copyright and moral rights) in this document are retained by the authors and/or the copyright holders. The express permission of the copyright holder must be obtained for any use of this material other than for purposes permitted by law.

- Users may freely distribute the URL that is used to identify this publication.
- Users may download and/or print one copy of the publication from the University of Birmingham research portal for the purpose of private study or non-commercial research.
- User may use extracts from the document in line with the concept of 'fair dealing' under the Copyright, Designs and Patents Act 1988 (?)
- Users may not further distribute the material nor use it for the purposes of commercial gain.

Where a licence is displayed above, please note the terms and conditions of the licence govern your use of this document.

When citing, please reference the published version.

Take down policy

While the University of Birmingham exercises care and attention in making items available there are rare occasions when an item has been uploaded in error or has been deemed to be commercially or otherwise sensitive.

If you believe that this is the case for this document, please contact UBIRA@lists.bham.ac.uk providing details and we will remove access to the work immediately and investigate.

Download date: 02. May. 2024



OPEN

A population-scale temporal case–control evaluation of COVID-19 disease phenotype and related outcome rates in patients with cancer in England (UKCCP)

Thomas Starkey^{1,40}, Maria C. Ionescu^{2,40}, Michael Tilby^{3,40}, Martin Little^{4,40}, Emma Burke^{4,40}, Matthew W. Fittall^{5,40}, Sam Khan^{6,40}, Justin K. H. Liu^{7,40}, James R. Platt^{8,40}, Rosie Mew^{9,40}, Arvind R. Tripathy^{10,40}, Isabella Watts^{11,40}, Sophie Therese Williams^{12,40}, Nathan Appanna¹³, Youssra Al-Hajji¹⁴, Matthew Barnard², Liza Benny², Alexander Burnett¹⁵, Jola Bytyci¹⁶, Emma L. Cattell¹⁷, Vinton Cheng⁷, James J. Clark¹⁸, Leonie Eastlake¹⁹, Kate Gerrand², Qamar Ghafoor³, Simon Grumett³, Catherine Harper-Wynne²⁰, Rachel Kahn²¹, Alvin J. X. Lee²², Oliver Lomas⁴, Anna Lydon⁹, Hayley Mckenzie²³, NCRI Consumer Forum^{24*}, Hari Panneerselvam²⁵, Jennifer S. Pascoe³, Grisma Patel²², Vijay Patel²⁶, Vanessa A. Potter²⁷, Amelia Randle²⁸, Anne S. Rigg²⁹, Tim M. Robinson³⁰, Rebecca Roylance³¹, Tom W. Roques³², Stefan Rozmanowski², René L. Roux⁴, Ketan Shah⁴, Remarez Sheehan³³, Martin Sintler³⁴, Sanskriti Swarup¹⁶, Harriet Taylor¹³, Tania Tillett³⁵, Mark Tuthill⁴, Sarah Williams³, Yuxin Ying¹⁶, Andrew Beggs¹, Tim Iveson²³, Siow Ming Lee³¹, Gary Middleton³⁶, Mark Middleton¹⁶, Andrew Protheroe³⁷, Tom Fowler^{2,38}, Peter Johnson^{39,41} & Lennard Y. W. Lee^{1,16,41}✉

Patients with cancer are at increased risk of hospitalisation and mortality following severe acute respiratory syndrome coronavirus 2 (SARS-CoV-2) infection. However, the SARS-CoV-2 phenotype evolution in patients with cancer since 2020 has not previously been described. We therefore evaluated SARS-CoV-2 on a UK populationscale from 01/11/2020–31/08/2022, assessing case-outcome rates of hospital assessment(s), intensive care admission and mortality. We observed that the SARS-CoV-2 disease phenotype has become less severe in patients with cancer and the non-cancer population. Case-hospitalisation rates for patients with cancer dropped from 30.58% in early 2021 to 7.45% in 2022 while case-mortality rates decreased from 20.53% to 3.25%. However, the risk of hospitalisation and mortality remains 2.10x and 2.54x higher in patients with cancer, respectively. Overall, the SARS-CoV-2 disease phenotype is less severe in 2022 compared to 2020 but patients with cancer remain at higher risk than the non-cancer population. Patients with cancer must therefore be empowered to live more normal lives, to see loved ones and families, while also being safeguarded with expanded measures to reduce the risk of transmission.

¹Institute of Cancer and Genomic Sciences, University of Birmingham, Birmingham, UK. ²UK Health Security Agency, London, UK. ³University Hospitals Birmingham NHS Foundation Trust, Birmingham, UK. ⁴Oxford University Hospitals NHS Trust, Oxford, UK. ⁵Cancer Institute, University College London, London, UK. ⁶University of Leicester, Leicester, UK. ⁷University of Leeds, Leeds, UK. ⁸Leeds Institute of Medical Research at St James's, Leeds, UK. ⁹Torbay and South Devon NHS Foundation Trust, Torquay, UK. ¹⁰Queen Elizabeth Hospital Birmingham, Birmingham, UK. ¹¹Royal Free London NHS Foundation Trust, London, UK. ¹²University of Sheffield, Sheffield, UK. ¹³Oxford Medical School, University of Oxford, Oxford, UK. ¹⁴Birmingham Medical School, University of Birmingham, Birmingham, UK. ¹⁵Weston Park Cancer Centre, Sheffield, UK. ¹⁶Department of Oncology, University of Oxford, Oxford, UK. ¹⁷Taunton and

Somerset NHS Foundation Trust, Taunton, UK. ¹⁸Imperial College London, London, UK. ¹⁹Royal Cornwall Hospital Trust, Truro, UK. ²⁰Kent Oncology Centre, Maidstone and Tunbridge Wells NHS Trust, Maidstone, UK. ²¹Blood Cancer UK, London, UK. ²²University College London, London, UK. ²³University Hospital Southampton NHS Foundation Trust, Southampton, UK. ²⁴National Cancer Research Institute Consumer Forum, London, UK. ²⁵Wye Valley NHS Trust, Hereford, UK. ²⁶National Health Service, London, UK. ²⁷University Hospitals Coventry and Warwickshire NHS Trust, Coventry, UK. ²⁸Royal College of Physicians, London, UK. ²⁹Guy's and St Thomas' NHS Foundation Trust, London, UK. ³⁰University of Bristol, Bristol, UK. ³¹University College London Hospitals NHS Foundation Trust, London, UK. ³²Norfolk and Norwich University Hospitals NHS Foundation Trust, Norwich, UK. ³³Nuffield Department of Surgical Sciences, University of Oxford, Oxford, UK. ³⁴Sandwell and West Birmingham Hospitals NHS Trust, Birmingham, UK. ³⁵Royal United Hospital Bath NHS Trust, Bath, UK. ³⁶Institute of Immunology and Immunotherapy, University of Birmingham, Birmingham, UK. ³⁷Churchill Hospital, Oxford University Hospitals NHS Foundation Trust, Oxford, UK. ³⁸William Harvey Research Institute, London, UK. ³⁹University of Southampton, Southampton, UK. ⁴⁰These authors contributed equally: Thomas Starkey, Maria C. Ionescu, Michael Tilby, Martin Little, Emma Burke, Matthew W. Fittall, Sam Khan, Justin K. H. Liu, James R. Platt, Rosie Mew, Arvind R. Tripathy, Isabella Watts and Sophie Therese Williams. ⁴¹These authors jointly supervised this work: Peter Johnson and Lennard Y. W. Lee. *A list of consortium members appears at the end of the paper. ✉email: lennard.lee@oncology.ox.ac.uk; L.lee.2@bham.ac.uk

The SARS-CoV-2 pandemic has had a significant effect on cancer care globally since 2020. People with cancer are at heightened risk compared to the non-cancer population due to their increased propensity to infections, and there is evidence of poor immunological responses to COVID-19 vaccines and boosters^{1–9}. Additionally, population scale studies have identified that patients with cancer experience waning immunity following vaccination to a much greater extent than the general population¹⁰.

Cancer centres in the United Kingdom have been at the vanguard of the global response to COVID-19, rapidly implementing new measures such as COVID-19 screening tests for patients undergoing cancer treatment¹¹, implementing shielding (also known as isolation measures) when rates were high in the pre-vaccination era¹², driving access to intensive care units¹³, promoting vaccination and vaccination boosters¹⁰, delivering access to diagnostics like antibody testing¹⁴, and implementing early treatment programmes with antivirals¹⁵.

It is widely acknowledged that the risk from SARS-CoV-2 is heterogenous. For people living with cancer, the risks are dependent on a combination of intrinsic patient factors, cancer factors (subtypes and treatments), COVID-19 measures (primary vaccination, boosters, early treatment programmes, access to intensive care units), and additionally by external factors such as the virulence of SARS-CoV-2 variants. The interactions of these factors vary over time as pandemics evolve, with changes to both the intrinsic and extrinsic risk factors. To date, there have been no population-scale analyses reporting on how the COVID-19 phenotype has evolved since 2020 in patients with cancer. Contemporary, accurate evaluations of levels of protection in patients with cancer are required as healthcare systems develop strategies for living with SARS-CoV-2 as an endemic disease. This information is also crucial for individual discussions between patients and their oncologists to adequately inform cancer treatment options.

There have been a small number of reports of severe COVID-19 outcomes in patients with cancer during 2022 when Omicron became the predominant circulating SARS-CoV-2 variant. In a study from Europe of 365 patients with cancer, the majority of whom were vaccinated against COVID-19, the case-hospitalisation rate was 24.4% with a 28-day case mortality of 13.1%¹⁶. In a subsequent study from the United States of 285 patients with cancer, of which 72% were vaccinated, a case mortality rate of 4.9% was observed¹⁷. Although on a small-scale, this indicates changes in clinical severity linked to circulating SARS-CoV-2 variants when compared to clinical outcomes of individuals earlier in the COVID-19 pandemic^{18,19}.

The UK Coronavirus Cancer Programme (UKCCP) has been responsible for providing outcome analyses and severity metrics in the United Kingdom since March 2020. In this analysis, we report on case-outcome rates, including hospital assessment, hospitalisation, intensive care admission and case-mortality rates in patients with cancer, and how these have changed over time. This evaluation provides the largest global granular analyses of the complex interaction between intrinsic patient factors and severe COVID-19 outcomes from the start of the pandemic using our UK population-scale COVID-19 cancer dataset.

Results

Study dataset. During the study evaluation from 1st November 2020 to 31st August 2022, 198,819 positive SARS-CoV-2 polymerase chain reaction (PCR) and lateral flow device (LFD) tests were identified from individuals identified in the national cancer registry, corresponding to 127,322 individual infections. In the non-cancer population, 18,188,573 positive tests from 15,801,004 individual infections were identified. Within the cancer cohort, 39,033 SARS-CoV-2 tests were associated with a hospital assessment, 28,061 with inpatient hospitalisation, 2,168 with intensive care admission and 15,278 with SARS-CoV-2 mortality (Supplementary Table 2). Patient demographics including age, sex, ethnicity, deprivation and vaccination status were captured for each cohort and are outlined in Supplementary Table 3.

Temporal changes in SARS-CoV-2 phenotype. We observed that during the study period from November 2020 to August 2022, the disease phenotype of the SARS-CoV-2 virus became less severe in both patients with cancer and the non-cancer population. COVID-19 hospital assessment and hospitalisation rates in patients with cancer decreased from 35.73% (884/2474) and 30.58% (6185/20,228) in early 2021 to 13.26% (5606/42,270) and 7.45% (3149/42,270) by Spring 2022, respectively (Supplementary Table 4). Similar drops

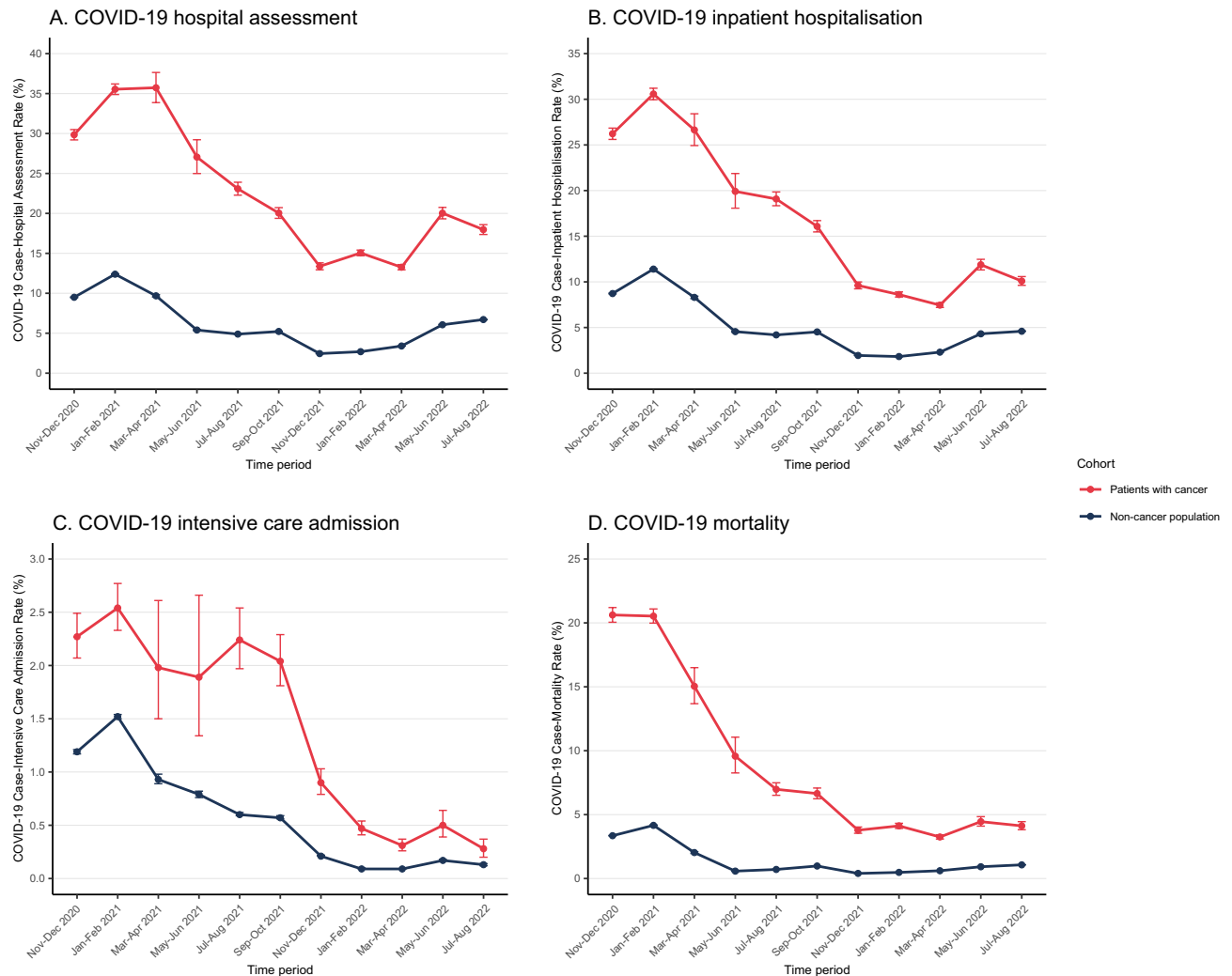


Figure 1. Temporal trends of case-outcome rates between patients with cancer and the non-cancer population in England between November 2020 and August 2022. Case-outcome rates (%) with 95% confidence intervals are shown at 2-month intervals for COVID-19 hospital assessment (A), inpatient hospitalisation (B), intensive care admission (C) and mortality (D).

in COVID-19 hospital assessment and hospitalisation rates were also noted in the non-cancer population (Fig. 1a-b, Supplementary Table 4). For both patients with cancer and the non-cancer population, COVID-19 case-intensive care admission rates of <0.5% (131/42,270 and 2926/3,238,009, respectively) were observed in Spring 2022 as opposed to 2.54% (514/20,228) and 1.52% (17,812/1,173,794) in early 2021, respectively (Fig. 1c, Supplementary Table 4). The COVID-19 case-mortality rate in patients with cancer decreased from 20.62% (3961/19,209) in late 2020/early 2021 to 3.25% (1374/42,270) by spring 2022 with a corresponding decrease from 4.16% (48,839/1,173,794) to 0.40% (14,175/3,543,980) in the non-cancer population (Fig. 1d, Supplementary Table 4). Over the course of the study period, uptake of one or more COVID-19 vaccine dose(s) increased to over 90% for both the cancer and non-cancer population (Supplementary Fig. 1, Supplementary Table 5).

SARS-CoV-2 phenotype in cancer subgroups in 2022. Having identified temporal trends in COVID-19 phenotype throughout the pandemic, we sought to understand the relative risk of these severe COVID-19 outcomes in the cancer cohort compared to the non-cancer population in 2022 by means of logistic regression models. We observed that the rate of hospital assessment was 5.34× (95% CI: 5.23–5.45) higher for patients with cancer with a 4.22× (95% CI: 4.11–4.33) higher rate of inpatient hospitalisation (Supplementary Fig. 2, all $p < 0.00001$). When adjusting for clinically relevant demographics including age, sex, ethnicity and deprivation, the relative risk of COVID-19 hospital assessment and inpatient hospitalisation in patients with cancer were 3.02× (95% CI 2.95–3.08) and 2.10× (95% CI 2.04–2.16), respectively (Fig. 2, all $p < 0.00001$). Similarly, the relative risk of COVID-19 intensive care admission and mortality within patients with cancer was 2.53× (95% CI 2.24–2.86) and 2.54× (95% CI 2.44–2.65) greater compared to the non-cancer population, respectively, when adjusted for age, sex, ethnicity and deprivation (Fig. 2, Supplementary Fig. 2, all $p < 0.00001$, Supplementary Table 6).

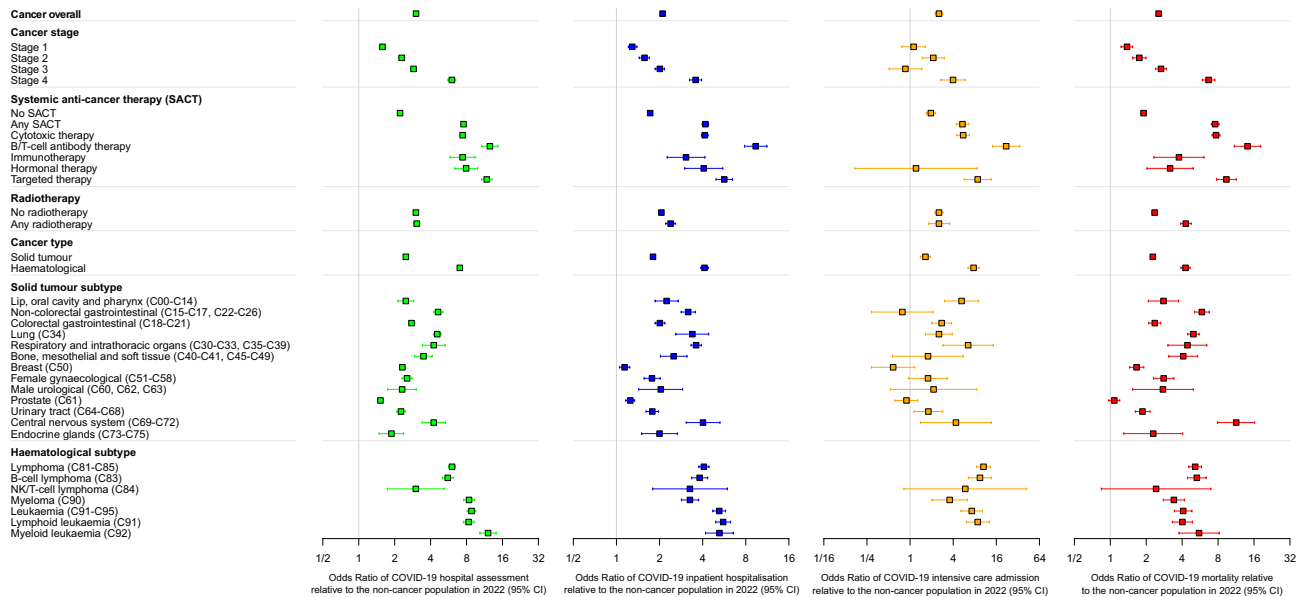


Figure 2. Relative risk of severe clinical outcomes in subgroups of patients with cancer compared to the non-cancer population following a COVID-19 infection between January 2022 and August 2022. Multivariable logistic regression models adjusting for age, sex, ethnicity and deprivation show the relative risk of COVID-19 hospital assessment (green), inpatient hospitalisation (blue), intensive care admission (orange) and mortality (red). Odds ratios are used to approximate relative risk with 95% confidence intervals. Corresponding ICD-10 codes for specific primary tumour subtypes are listed in brackets.

We then assessed the relative risks for subgroups of patients with cancer, compared to the non-cancer population. Our cancer subgroups included cancer stage, cancer treatment and cancer subtype as previously reported^{12,13}. For severe COVID-19 outcomes (hospital assessment, inpatient hospitalisation, intensive care admission, COVID-19 mortality), the most notable subgroups associated with significantly higher risk were individuals with blood cancer (particularly leukaemia), receipt of SACT (cytotoxic therapy, B/T cell antibody, targeted therapy) and stage 4 cancer (Fig. 2, Supplementary Fig. 2).

Personalised SARS-CoV-2 phenotype variations over time. Having identified differences in COVID-19 outcomes between different subgroups in 2022, we performed a more granular assessment of case-outcome rates across the COVID-19 pandemic. Building on previous analyses of COVID-19 outcomes, we calculated case-outcome rates for individual cancer subtypes across different age groups and sex in late 2020, 2021 and 2022¹³.

We observed that case-outcome rates across the majority of cancer subtypes were lower in 2022, corresponding with the Omicron wave, when the majority of patients with cancer had received one or more COVID-19 vaccine dose, compared to both 2020 and 2021 (Supplementary Fig. 3). Individuals with haematological malignancies were at greater risk than those with solid organ cancers, with elevated risks also observed (though to a lesser extent) in those with lung cancers (Fig. 3, Supplementary Fig. 3).

Across the cancer cohort in 2022, patient age corresponded with greater differences in case-mortality rates than primary tumour subtype (Fig. 3). In 2022, the case-mortality rate for patients with cancer aged 80+ was 10.32% (1771/17,169, 95% CI 9.87–10.78) compared to 2.83% (2781/98,117, 95% CI 2.73–2.94) for those aged 18–79. The case-mortality rate for individuals with any haematological malignancy was 5.68% (945/16,649, 95% CI 5.33–6.04).

Discussion

This UKCCP analysis has comprehensively described the evolution of the SARS-CoV-2 disease phenotype in patients with cancer within the UK. This population-scale study enables patients and clinicians to better understand risks from SARS-CoV-2. The disease phenotype is now different from what was experienced by patients with cancer and treating physicians in 2020 and likely to reflect global trends. Our analyses have identified that severe SARS-CoV-2 outcomes (hospital assessment, inpatient hospitalisation, intensive care and mortality) are now less frequent. Fewer patients are hospitalised, and many may be managed in the community. Nevertheless, patients with cancer remain at elevated risk of these outcomes compared to the non-cancer population.

The reduction in the severity of disease phenotype is likely attributable to the great strides taken by health care professionals to adapt cancer care, including access to vaccination and reconfigurations of treatment programmes and wider healthcare services. This includes the rapid early-stage roll-out of SARS-CoV-2 vaccines by UK public health bodies and the National Health Service to clinically vulnerable individuals including people living with cancer. More recently, antiviral and monoclonal therapies have been developed and utilised, further

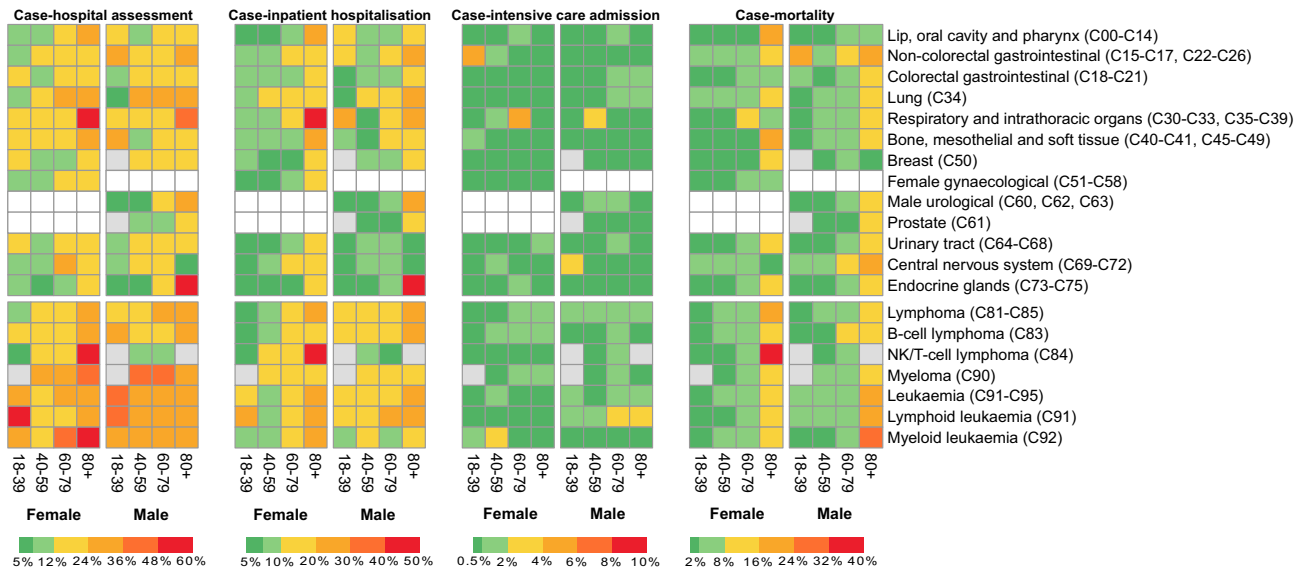


Figure 3. Case-outcome rates of solid and haematological cancer subtypes by age group and sex (female or male) following a COVID-19 infection in 2022. Case-outcome rates for COVID-19 hospital assessment, inpatient hospitalisation, intensive care admission and mortality are shown for each cancer subtype and are colour coded according to the scales below each heatmap. Grey boxes denote <10 SARS-CoV-2 tests within a subgroup. White boxes denote <10 SARS-CoV-2 tests within sex-specific cancer subtypes (female gynaecological, male urological, prostate cancers). Corresponding ICD-10 codes for specific primary tumour subtypes are listed in brackets.

improving clinical outcomes^{20–23}. These measures have likely made cancer centres better protected from respiratory pathogens than at any time in history.

However, the risks of severe COVID-19 outcomes are still significantly higher in patients with cancer than the general population and it is therefore important to maintain access to protective measures for this group. The excess risks associated with the receipt of SACT in our population is at clear odds to papers that were published in 2020 in the pre-vaccination era^{24,25}. B and T cell-depleting therapies were associated with increased risk. This is possibly the result of more comprehensive evaluations of COVID-19 outcomes within patients receiving SACT and corresponds with evidence of lower vaccine effectiveness and post-vaccination SARS-CoV-2 antibody responses in patients receiving SACT^{10,26,27}. The elevated risks of severe COVID-19 outcomes therefore need to be weighed against the oncological benefits of cancer treatment. We hope that our dataset will enable patients and clinicians to understand the relative risks and benefits of cancer treatment in an evolving pandemic landscape and allow for informed joint decision-making.

The trends of SARS-CoV-2 outcome severity must be monitored and further efforts to reduce excess risk experienced by patients with cancer remain important. Many countries are now employing new approaches such as pre-exposure prophylactic antibody therapies and immunisations to provide a critical boost for those who derive lower levels of benefit from vaccination. Infection prevention in patients with cancer is important; concerns around treating COVID-19-positive patients will inevitably lead to delays in delivering effective cancer care and ultimately poorer cancer outcomes. However, the effectiveness of prophylactic antibody therapies needs to be assessed with different disease variants of SARS-CoV-2, and their ongoing benefit evaluated.

There are a few limitations to this study. The first is that we have reported on case severity and not absolute number of events. Unrestrained community transmission of SARS-CoV-2 with a low severe event rate will lead to more cases of severe events in the population, whilst the risk to given individuals remains low. In addition, clinical guidelines for hospital and intensive care admissions for patients with cancer were altered during the pandemic for managing healthcare capacity and infection control which might have impacted admission of subgroups of cancer patients, possibly including those with advanced-stage disease^{28,29}. Secondly, we acknowledge that further iterations and evolution of the multivariable models could be performed to incorporate additional clinically-important covariates, such as vaccination status and time from most recent vaccine, which could be informative for clinical decision-making. Furthermore, our cancer registry takes time to accrue cases and the most recent diagnoses are not recorded. This will therefore be an underestimate of COVID-19 risk, though this will occur in both populations of interest. Finally, we know there is clinical utility of diagnostic tests such as antibody responses in terms of forecasting risk in cancer cohorts and this was not assessed in this analysis³⁰.

To summarise, in patients with cancer, the risk of severe COVID-19 events is at its lowest since 2020. Following interventions by the oncology community, the disease phenotype is now markedly less severe for most patients with cancer compared to previous years. Further work can and should be done to reduce the excess risk to patients with cancer and provide similar levels of COVID-19 protection as the wider population. This work can be expanded to other at-risk populations, for example immunosuppressed post-transplant patients. A renewed focus on strategies to maximise quality of living as well as a focus back to effective cancer care and

research are more important than ever. In combination, these measures will allow healthcare systems to deliver successful cancer research programmes and safeguard the future for those who have developed or are at risk of developing cancer.

Online methods

Study setting. The UKCCP is one of the United Kingdom's longest running pandemic responses with a mission to safeguard, evaluate and protect patients with cancer, (www.ukcovidcancerprogramme.org). This project was a population-based study of COVID-19 outcomes in patients with cancer from the study period of 1st November 2020 to 31st August 2022, initiated to define the disease phenotype in the highest clinical risk groups. The study period includes significant milestones over the course of the pandemic, including the start of the COVID-19 vaccination programme (December 2020), the COVID-19 booster vaccines (September 2021), SARS-CoV-2 Delta variant wave (April 2021–December 2021), the start of the SARS-CoV-2 Omicron variant wave (December 2021–April 2022) and the availability of community antiviral treatment following recent infection (June 2022).

Study design and population. The study was performed as a population-scale case–control evaluation of clinical outcomes following a SARS-CoV-2 infection in patients with cancer and the non-cancer population. The study population contains all positive SARS-CoV-2 polymerase chain reaction (PCR) and lateral flow device (LFD) test results from England during the study period. The cancer cohort comprises adults (18 years or older) who underwent SARS-CoV-2 testing, identified from Public Health England's rapid registration national cancer dataset between 1st January 2018 and 30th April 2021. A control population cohort was constructed from SARS-CoV-2 tests from adults who were not contained within this national cancer dataset. The study was designed as a public health surveillance analysis to support rapid clinical decision making during the pandemic in accordance with the UK Policy Framework for Health and Social Care Research. The project was supported by the UK Health Security Agency (UKHSA) with ethical approval from the Health Research Authority (20/WA/0181). The corresponding authors and senior author had final responsibility for the decision to submit for publication.

Data and sampling. NHS England used PCR testing for those with COVID-19 symptoms, and LFD testing, also known as antigen-detecting rapid diagnostic testing, for identification of asymptomatic cases. Furthermore, in the NHS, infection and prevention control measures in secondary care required COVID-19 testing of asymptomatic inpatients and outpatients prior to many procedures or treatments. From 1st April 2022, guidelines for COVID-19 testing in the community were updated to end free, universal symptomatic and asymptomatic testing for the general public in England but continue testing provision for eligible clinically-vulnerable individuals³¹. Identification of patient-level COVID-19 test results, including from community and hospital testing, were obtained from the second-generation surveillance system (SGSS). Corresponding hospital and intensive-care admission records were obtained from the Secondary Use Statistics (SUS) datasets and COVID-19 vaccination records from the National Immunisation Management Service (NIMS) for both the cancer cohort and non-cancer population control. Data linkage required exact matching of NHS ID at the patient level between each dataset, and each data point corresponds to a single SARS-CoV-2 test. All data was anonymised prior to data analysis and no patient-identifiable features are included within the manuscript in accordance with relevant guidelines and regulations to maintain data security and patient confidentiality.

The UKCCP dataset comprises information including age, sex, ethnicity, vaccination status and deprivation, with geographical location being used to determine the index of multiple deprivation (IMD), a national indicator of deprivation³². For patients with cancer, the dataset contains information about cancer stage and subtype, receipt of radiotherapy and systemic anti-cancer treatments (SACT). SACT is an umbrella term of cancer treatments including cytotoxic agents (chemotherapy), targeted, immune or hormonal therapies. SACT was also divided into five different classes (cytotoxic, B or T cell antibody, targeted, immunotherapy, hormonal) with treatment classification outlined in Supplementary Table 1. Variables were either binary or grouped with age categorised into age bands (18–39, 40–59, 60–79, 80+) to align with previous UKCCP studies^{13,24}.

Statistical Analysis. The co-primary outcomes of the study were COVID-19 case-outcome rates including COVID-19 hospital assessment, COVID-19 inpatient hospitalisation, COVID-19 intensive care admission and COVID-19 mortality. A COVID-19 hospital assessment was defined as a secondary care encounter from –1 to +14 days of a positive SARS-CoV-2 test. A COVID-19 inpatient hospitalisation was defined as a hospitalisation episode lasting more than one day. A COVID-19 intensive care admission was an intensive care admission following a COVID-19 hospitalisation. COVID-19 mortality was defined as any death up to 28 days of a positive SARS-CoV-2 test, in keeping with standard COVID-19 deaths reported by UK Office for National Statistics¹⁰.

Univariable and multivariable logistic regression were utilised to assess the relative risk of COVID-19 outcomes in subgroups of patients with cancer compared to the non-cancer population. This analysis was performed in 2022 when Omicron had become the predominant SARS-CoV-2 variant circulating in the population. Adjustments were made for clinically important covariates of patient age, sex, ethnicity and deprivation which may act as confounders and/or effect modifiers for analysing clinical outcomes following a SARS-CoV-2 infection and performed as per our previous analyses^{10,26}. Univariable analyses were also performed to determine absolute COVID-19 case-outcome rates, with cancer subtype subdivided by patient age and sex and performed as per our previous analyses¹³.

Within the cancer cohort, cancer subgroup analyses were assessed with ICD-10 subtype codes³³, cancer stage, receipt of systemic anti-cancer therapy (SACT) and/or radiotherapy. Cancer treatments (SACT or radiotherapy) were evaluated as to whether the individual had received these treatments.

Data availability and patient consent

Individual participant data was utilised in the study, for which informed patient consent was obtained. All data was anonymised prior to data analysis and no patient-identifiable features are included within the manuscript in accordance with relevant guidelines and regulations. In order to comply with data privacy laws, data from this study, including individual participant data is not available for sharing. Data field definition within the data dictionary are available by reasonable request. The privacy statement for individuals performing coronavirus testing provided by the UK Health Security Agency (UKHSA) and Department for Health and Social care (DHSC) is available here: <https://www.gov.uk/government/publications/phe-privacy-information/privacy-information>.

Received: 3 February 2023; Accepted: 14 June 2023

Published online: 25 July 2023

References

- Becerril-Gaitan, A. *et al.* Immunogenicity and risk of severe acute respiratory syndrome coronavirus 2 (SARS-CoV-2) infection after coronavirus disease 2019 (COVID-19) vaccination in patients with cancer: A systematic review and meta-analysis. *Eur. J. Cancer* **160**, 243–260 (2022).
- Gounant, V. *et al.* Efficacy of severe acute respiratory syndrome coronavirus-2 vaccine in patients with thoracic Cancer: A prospective study supporting a third dose in patients with minimal serologic response after two vaccine doses. *J. Thorac. Oncol.* **17**, 239–251 (2022).
- Ligumsky, H. *et al.* Immunogenicity and safety of BNT162b2 mRNA vaccine booster in actively treated patients with cancer. *Lancet Oncol.* **23**(2), 193–195 (2021).
- Naranbhai, V. *et al.* Immunogenicity and reactogenicity of SARS-CoV-2 vaccines in patients with cancer: The CANVAX cohort study. *J. Clin. Oncol.* **40**, 12–23 (2022).
- Fendler, A. *et al.* Functional antibody and T cell immunity following SARS-CoV-2 infection, including by variants of concern, in patients with cancer: The CAPTURE study. *Nat. Cancer* <https://doi.org/10.1038/s43018-021-00275-9> (2021).
- Monin, L. *et al.* Safety and immunogenicity of one versus two doses of the COVID-19 vaccine BNT162b2 for patients with cancer: Interim analysis of a prospective observational study. *Lancet Oncol.* **22**, 765–778 (2021).
- Lim, S. H. *et al.* Antibody responses after SARS-CoV-2 vaccination in patients with lymphoma. *Lancet Haematol.* **8**, e542–e544 (2021).
- Barrière, J. *et al.* Impaired immunogenicity of BNT162b2 anti-SARS-CoV-2 vaccine in patients treated for solid tumors. *Ann. Oncol. Off. J. Eur. Soc. Med. Oncol.* **32**, 1053–1055 (2021).
- Shapiro, L. C. *et al.* Efficacy of booster doses in augmenting waning immune responses to COVID-19 vaccine in patients with cancer. *Cancer Cell* **40**(1), 3–5 (2021).
- Vaccine effectiveness against COVID-19 breakthrough infections in patients with cancer (UKCCEP): A population-based test-negative case-control study - The Lancet Oncology. [https://www.thelancet.com/journals/lanonc/article/PIIS1470-2045\(22\)00202-9/fulltext](https://www.thelancet.com/journals/lanonc/article/PIIS1470-2045(22)00202-9/fulltext).
- Lee, L. Y. W. *et al.* Utility of COVID-19 screening in cancer patients. *Cancer Cell* **38**, 306–307 (2020).
- Lee, L. Y. W. *et al.* COVID-19 mortality in patients with cancer on chemotherapy or other anticancer treatments: A prospective cohort study. *The Lancet* **395**(10241), 1919–1926 (2020).
- Lee, L. Y. W. *et al.* COVID-19 prevalence and mortality in patients with cancer and the effect of primary tumour subtype and patient demographics: A prospective cohort study. *Lancet Oncol.* **21**, 1309–1316 (2020).
- National COVID Cancer Survey. *National COVID Cancer Survey* <https://covidcancersurvey.uk/>.
- Second ground-breaking antiviral to be deployed to country's most vulnerable. *GOV.UK* <https://www.gov.uk/government/news/second-ground-breaking-antiviral-to-be-deployed-to-countrys-most-vulnerable>.
- Pinato, D. J. *et al.* Outcomes of the SARS-CoV-2 omicron (B.1.1.529) variant outbreak among vaccinated and unvaccinated patients with cancer in Europe: Results from the retrospective, multicentre, OnCovid registry study. *Lancet Oncol.* **23**(7), 865–875 (2022).
- Lee, M. *et al.* Impact of COVID-19 on case fatality rate of patients with cancer during the Omicron wave. *Cancer Cell* **40**, 343–345 (2022).
- Leiner, J. *et al.* Characteristics and outcomes of COVID-19 patients during B.1.1.529 (Omicron) dominance compared to B.1.617.2 (Delta) in 89 German hospitals. *BMC Infect. Dis.* **22**, 802 (2022).
- Temporal trends in COVID-19 outcomes among patients with systemic autoimmune rheumatic diseases: from the first wave through the initial Omicron wave | *Annals of the Rheumatic Diseases*. <https://ard.bmj.com/content/81/12/1742>.
- Ng, T. I. *et al.* Antiviral drug discovery for the treatment of COVID-19 infections. *Viruses* **14**, 961 (2022).
- Vegivinti, C. T. R. *et al.* Efficacy of antiviral therapies for COVID-19: A systematic review of randomized controlled trials. *BMC Infect. Dis.* **22**, 107 (2022).
- Ambrose, N. *et al.* Neutralizing monoclonal antibody use and COVID-19 infection outcomes. *JAMA Netw. Open* **6**, e239694 (2023).
- Suribhatla, R. *et al.* Systematic review and meta-analysis of the clinical effectiveness of tixagevimab/cilgavimab for prophylaxis of COVID-19 in immunocompromised patients. *Br. J. Haematol.* **n/a**.
- Lee, L. Y. W. *et al.* COVID-19 mortality in patients with cancer on chemotherapy or other anticancer treatments: A prospective cohort study. *Lancet Lond. Engl.* **395**, 1919–1926 (2020).
- Kuderer, N. M. *et al.* Clinical impact of COVID-19 on patients with cancer (CCC19): A cohort study. *Lancet Lond. Engl.* **395**, 1907–1918 (2020).
- Lee, L. Y. W. *et al.* COVID-19: Third dose booster vaccine effectiveness against breakthrough coronavirus infection, hospitalisations and death in patients with cancer: A population-based study. *Eur. J. Cancer* **175**, 1–10 (2022).
- Lee, L. Y. W. *et al.* Association of SARS-CoV-2 spike protein antibody vaccine response with infection severity in patients with cancer: A national COVID cancer cross-sectional evaluation. *JAMA Oncol.* **9**, 188–196 (2023).
- Spicer, J., Chamberlain, C. & Papa, S. Provision of cancer care during the COVID-19 pandemic. *Nat. Rev. Clin. Oncol.* **17**, 329–331 (2020).
- Mitchell, H. *et al.* Impact of the COVID-19 pandemic on emergency hospital cancer admissions in a UK region. *BMC Cancer* **22**, 850 (2022).
- Al Hajji, Y., Taylor, H., Starkey, T., Lee, L. Y. W. & Tilby, M. Antibody response to a third booster dose of SARS-CoV-2 vaccination in adults with haematological and solid cancer: A systematic review. *Br. J. Cancer* **127**, 1827–1836 (2022).
- COVID-19 Response: Living with COVID-19. *GOV.UK* <https://www.gov.uk/government/publications/covid-19-response-living-with-covid-19/covid-19-response-living-with-covid-19>.
- English indices of deprivation 2019. *GOV.UK* <https://www.gov.uk/government/statistics/english-indices-of-deprivation-2019>.
- ICD-10 Version:2019. <https://icd.who.int/browse10/2019/en>.

Acknowledgements

The authors thank our patients, oncologists, physicians and health-care staff working tirelessly on the frontlines of the COVID-19 pandemic. We would like to thank Department of Health and Social Care (DHSC), UK Health Security Agency (UKHSA), University of Oxford, University of Birmingham, University of Southampton and Blood Cancer UK for providing funding and support for this study. The funders had no formal role in data analysis, interpretation or decision to submit for publication. The research was supported by the National Institute of Health Research (NIHR) Oxford Biomedical Research Centre (BRC). Lennard Lee is supported by grants from the Academy of Medical Sciences (AMS) and the Government Department of Business, Energy and Industrial Strategy (BEIS). Sam Khan is supported by an NIHR Academic Clinical Lecturer award. We would also like to acknowledge the work by the NCRI consumer forum for initiating this project. This work uses data provided by patients and collected by the NHS as part of their care and support. The views expressed are those of the author(s) and not necessarily those of the NHS, the NIHR, the UK Health Security Agency or the Department of Health and Social Care.

Author contributions

The following authors were involved in study design (T.S., M.C.I., M.T., M.L., E.B., M.W.F., S.K., J.K.H.L., J.R.P., R.M., A.R.T., I.W., S.T.W., A.B., T.F., P.J., L.Y.W.L.), data acquisition (M.C.I., M.B., L.B., S.R., T.F., L.Y.W.L.), data processing and analysis (T.S., M.C.I.), table and figure generation (T.S.), writing of the manuscript (T.S., M.C.I., M.T., M.L., E.B., M.W.F., S.K., J.K.H.L., J.R.P., R.M., A.R.T., I.W., S.T.W., A.B., L.Y.W.L.), critical review of the manuscript (N.A., Y.A.-H., M.B., L.B., J.B., E.L.C., V.C., J.J.C., L.E., K.G., Q.G., S.G., C.H.-W., R.K., A.J.X.L., O.L., A.L., H.M., NCRI Consumer Forum, H.P., J.S.P., G.P., V.P., V.A.P., A.R., A.S.R., T.M.R., R.R., T.W.R., S.R., R.L.R., K.S., R.S., M.S., S.S., H.T., T.T., M.T., S.W., Y.Y., A.B., T.I., S.M.L., G.M., M.M., A.P., T.F., P.J.), decision to submit (all authors).

Competing interests

The authors declare no competing interests.

Additional information

Supplementary Information The online version contains supplementary material available at <https://doi.org/10.1038/s41598-023-36990-9>.

Correspondence and requests for materials should be addressed to L.Y.W.L.

Reprints and permissions information is available at www.nature.com/reprints.

Publisher's note Springer Nature remains neutral with regard to jurisdictional claims in published maps and institutional affiliations.



Open Access This article is licensed under a Creative Commons Attribution 4.0 International License, which permits use, sharing, adaptation, distribution and reproduction in any medium or format, as long as you give appropriate credit to the original author(s) and the source, provide a link to the Creative Commons licence, and indicate if changes were made. The images or other third party material in this article are included in the article's Creative Commons licence, unless indicated otherwise in a credit line to the material. If material is not included in the article's Creative Commons licence and your intended use is not permitted by statutory regulation or exceeds the permitted use, you will need to obtain permission directly from the copyright holder. To view a copy of this licence, visit <http://creativecommons.org/licenses/by/4.0/>.

© The Author(s) 2023

NCRI Consumer Forum

Emma Kinloch²⁴, Emily Lam²⁴, Gillian Murphy²⁴, Malcolm Rhodes²⁴ & Kate Robinson²⁴