

# Adipocyte-specific deletion of Tcf7l2 induces dysregulated lipid metabolism and impairs glucose tolerance in mice

Nguyen-Tu, Marie-Sophie; Martinez-Sanchez, Aida; Leclerc, Isabelle; Rutter, Guy A; da Silva Xavier, Gabriela

DOI:

[10.1007/s00125-020-05292-4](https://doi.org/10.1007/s00125-020-05292-4)

License:

Creative Commons: Attribution (CC BY)

*Document Version*

Publisher's PDF, also known as Version of record

*Citation for published version (Harvard):*

Nguyen-Tu, M-S, Martinez-Sanchez, A, Leclerc, I, Rutter, GA & da Silva Xavier, G 2021, 'Adipocyte-specific deletion of Tcf7l2 induces dysregulated lipid metabolism and impairs glucose tolerance in mice', *Diabetologia*, vol. 64, no. 1, pp. 129-141. <https://doi.org/10.1007/s00125-020-05292-4>

[Link to publication on Research at Birmingham portal](#)

## General rights

Unless a licence is specified above, all rights (including copyright and moral rights) in this document are retained by the authors and/or the copyright holders. The express permission of the copyright holder must be obtained for any use of this material other than for purposes permitted by law.

- Users may freely distribute the URL that is used to identify this publication.
- Users may download and/or print one copy of the publication from the University of Birmingham research portal for the purpose of private study or non-commercial research.
- User may use extracts from the document in line with the concept of 'fair dealing' under the Copyright, Designs and Patents Act 1988 (?)
- Users may not further distribute the material nor use it for the purposes of commercial gain.

Where a licence is displayed above, please note the terms and conditions of the licence govern your use of this document.

When citing, please reference the published version.

## Take down policy

While the University of Birmingham exercises care and attention in making items available there are rare occasions when an item has been uploaded in error or has been deemed to be commercially or otherwise sensitive.

If you believe that this is the case for this document, please contact [UBIRA@lists.bham.ac.uk](mailto:UBIRA@lists.bham.ac.uk) providing details and we will remove access to the work immediately and investigate.



# Adipocyte-specific deletion of *Tcf7l2* induces dysregulated lipid metabolism and impairs glucose tolerance in mice

Marie-Sophie Nguyen-Tu<sup>1</sup> · Aida Martinez-Sanchez<sup>1</sup> · Isabelle Leclerc<sup>1</sup> · Guy A. Rutter<sup>1,2</sup> · Gabriela da Silva Xavier<sup>1,3</sup>

Received: 17 June 2020 / Accepted: 7 August 2020 / Published online: 17 October 2020  
© The Author(s) 2020

## Abstract

**Aims/hypothesis** Transcription factor 7-like 2 (TCF7L2) is a downstream effector of the Wnt/ $\beta$ -catenin signalling pathway implicated in type 2 diabetes risk through genome-wide association studies. Although its expression is critical for adipocyte development, the potential roles of changes in adipose tissue TCF7L2 levels in diabetes risk are poorly defined. Here, we investigated whether forced changes in *Tcf7l2* expression in adipocytes affect whole body glucose or lipid metabolism and crosstalk between disease-relevant tissues.

**Methods** *Tcf7l2* was selectively ablated in mature adipocytes in C57BL/6J mice using *Cre* recombinase under *Adipoq* promoter control to recombine *Tcf7l2* alleles floxed at exon 1 (referred to as aTCF7L2 mice). aTCF7L2 mice were fed normal chow or a high-fat diet for 12 weeks. Glucose and insulin sensitivity, as well as beta cell function, were assessed in vivo and in vitro. Levels of circulating NEFA, selected hormones and adipokines were measured using standard assays.

**Results** Reduced TCF7L2 expression in adipocytes altered glucose tolerance and insulin secretion in male but not in female mice. Thus, on a normal chow diet, male heterozygote knockout mice (aTCF7L2het) exhibited impaired glucose tolerance at 16 weeks ( $p = 0.03$ ) and increased fat mass ( $1.4 \pm 0.1$ -fold,  $p = 0.007$ ) but no changes in insulin secretion. In contrast, male homozygote knockout (aTCF7L2hom) mice displayed normal body weight but impaired oral glucose tolerance at 16 weeks ( $p = 0.0001$ ). These changes were mechanistically associated with impaired in vitro glucose-stimulated insulin secretion (decreased  $0.5 \pm 0.1$ -fold vs control mice,  $p = 0.02$ ) and decreased levels of the incretins glucagon-like peptide-1 and glucose-dependent insulinotropic polypeptide ( $0.6 \pm 0.1$ -fold and  $0.4 \pm 0.1$ -fold vs control mice,  $p = 0.04$  and  $p < 0.0001$ , respectively). Circulating levels of plasma NEFA and fatty acid binding protein 4 were increased by  $1.3 \pm 0.1$ -fold and  $1.8 \pm 0.3$ -fold vs control mice ( $p = 0.03$  and  $p = 0.05$ , respectively). Following exposure to a high-fat diet for 12 weeks, male aTCF7L2hom mice exhibited reduced in vivo glucose-stimulated insulin secretion ( $0.5 \pm 0.1$ -fold vs control mice,  $p = 0.02$ ).

**Conclusions/interpretation** Loss of *Tcf7l2* gene expression selectively in adipocytes leads to a sexually dimorphic phenotype, with impairments not only in adipocytes, but also in pancreatic islet and enteroendocrine cells in male mice only. Our findings suggest novel roles for adipokines and incretins in the effects of diabetes-associated variants in *TCF7L2*, and further illuminate the roles of *TCF7L2* in glucose homeostasis and diabetes risk.

**Keywords** Adipocyte · Beta cell · Fatty acid · Incretin · Insulin · Mouse · TCF7L2 · Type 2 diabetes

Gabriela da Silva Xavier and Guy A. Rutter are joint corresponding authors

**Electronic supplementary material** The online version of this article (<https://doi.org/10.1007/s00125-020-05292-4>) contains peer-reviewed but unedited supplementary material, which is available to authorised users.

✉ Gabriela da Silva Xavier  
g.dasilvaxavier@bham.ac.uk

✉ Guy A. Rutter  
g.rutter@imperial.ac.uk

<sup>2</sup> Lee Kong Chian School of Medicine, Nanyang Technological University, Singapore, Singapore

<sup>3</sup> Institute of Metabolism and Systems Research, University of Birmingham, Birmingham, UK

<sup>1</sup> Section of Cell Biology and Functional Genomics, Department of Metabolism, Digestion and Reproduction, Hammersmith Hospital, Imperial College Centre for Translational and Experimental Medicine, London, UK

## Research in context

### What is already known about this subject?

- Transcription factor 7-like 2 (TCF7L2) is a transcription factor and a member of the Wnt signalling pathway, which regulates development and cell proliferation. According to genome-wide association studies, TCF7L2 is associated with diabetes risk; it is highly expressed in pre-adipocytes and regulates adipogenesis
- Loss of *Tcf7l2* in the mature adipocyte affects whole body glucose tolerance and induces hepatic insulin resistance under chow and high-fat diet
- TCF7L2 plays a key role in adipocytes in the regulation of genes involved in triacylglycerol hydrolysis and lipolysis

### What is the key question?

- How do changes in TCF7L2 expression in mature adipocytes impact other tissues involved in the regulation of energy homeostasis?

### What are the new findings?

- Reduced TCF7L2 expression in mouse adipocytes leads to age-, sex- and diet-dependent impairment in glucose tolerance
- Adipocyte TCF7L2 controls circulating NEFA and fatty acid binding protein 4 levels
- Disrupted circulating lipid levels are associated with altered beta cell function and lowered incretin levels

### How might this impact on clinical practice in the foreseeable future?

- Changes in the expression of *Tcf7l2* in adipocytes associated with the inheritance of risk alleles or metabolic disturbances may lead to knock-on effects in the function of other tissues involved in the regulation of energy. A better understanding of TCF7L2 function in tissues involved in the regulation of systemic energy homeostasis may assist the development of novel therapies

## Abbreviations

aTCF7L2het	(Mice with) genetic ablation of a single <i>Tcf7l2</i> gene in mature adipocytes
aTCF7L2hom	(Mice with) genetic ablation of both <i>Tcf7l2</i> genes in mature adipocytes
COVID-19	Coronavirus disease-2019
DPP4	Dipeptidyl peptidase 4
eWAT	Epididymal white adipose tissue
FABP4	Fatty acid binding protein 4
GIP	Glucose-dependent insulinotropic polypeptide
GLP-1	Glucagon-like peptide-1
HFD	High-fat diet
HTRF	Homogeneous time resolved fluorescence
iWAT	Inguinal white adipose tissue
NC	Normal chow diet
PAI-1	Plasminogen activator inhibitor-1
TCF7L2	Transcription factor 7-like 2

## Introduction

Transcription factor 7-like 2 (TCF7L2) is a member of the high mobility group box family of transcription factors, a

downstream effector of the Wnt/ $\beta$ -catenin signalling pathway, and a key regulator of development and cell growth [1]. TCF7L2 has also emerged as an important regulator of energy homeostasis. Thus, TCF7L2 is required for normal glucose homeostasis via the maintenance of functional pancreatic beta cell mass and insulin release from the endocrine pancreas [2, 3]. On the other hand, the role(s) of this factor in other metabolically important tissues are less clear cut. For example, ablation of *Tcf7l2* expression from hepatocytes has variously been shown to lead to reduced hepatic glucose production and improved glucose homeostasis [4] or to hyperglycaemia [5].

The possible involvement of TCF7L2 in type 2 diabetes pathophysiology became apparent following the identification in genome-wide association studies of SNPs in the *TCF7L2* gene as amongst the most strongly associated with an increased risk of type 2 diabetes (reviewed in [6]). Humans carrying the T risk allele at SNP rs7903146 have elevated proinsulin levels, lowered insulin secretion and impaired responses to the incretin hormone glucagon-like peptide 1 (GLP-1) [7, 8]. While *TCF7L2* variants in humans are thought chiefly to act via pancreatic beta cell function, the mechanisms driving impaired insulin secretion are still poorly defined [9, 10]. Previous studies of the relationship between *TCF7L2*

expression and glucose homeostasis have suggested that the combined effects of loss of *TCF7L2* in multiple tissues may underlie exaggerated diabetes risk [11].

The expression of *TCF7L2* has been shown to be reduced in adipose tissue from individuals with type 2 diabetes [12] and in obese mice [13], indicating that *TCF7L2* function in adipose tissue may influence diabetes risk. MacDougald and colleagues [14, 15] have demonstrated that Wnt signalling is involved in regulating the expression of pro-adipogenic genes during adipocyte development. Recent studies have also implicated *TCF7L2* as an important regulator of adipocyte differentiation and function [13, 16]. In addition, insulin and insulin growth factor 1 (IGF-1) have been shown to mediate crosstalk with the Wnt signalling pathway to regulate insulin sensitivity in pre-adipocytes [17]. The presence of *TCF7L2* binding sites on the promoter of the insulin receptor gene also suggests a role for *TCF7L2*/Wnt signalling pathway in regulating insulin action in adipocytes [18]. However, the role of *TCF7L2* in maintaining normal adipose tissue crosstalk in adult mice between adipocytes (important integrators of systemic energy homeostasis), and other tissues, is currently unclear.

In the present report, we have used *Tcf7l2* ablation selectively in mature adipocytes in mice to explore these questions. We have focused in particular on whether loss of *Tcf7l2* expression in the adipocyte may impact circulating levels of adipokines, incretins or insulin. In this way, we sought to explore the possibility that altered *TCF7L2* expression in the adipocyte may contribute to type 2 diabetes risk by affecting crosstalk between multiple tissues involved in energy homeostasis.

## Methods

Detailed descriptions of the experimental procedures can be found in the [Electronic supplementary material](#) (ESM).

**Animals** To achieve tissue-selective ablation of *Tcf7l2* alleles, we crossed mice in which exon 1 of *Tcf7l2* was flanked by *LoxP* sites [2] to mice expressing *Cre* recombinase under the control of the *Adipoq* promoter [19] to produce deletion of a single (a*TCF7L2*het) or two *Tcf7l2* alleles (a*TCF7L2*hom). Animals were housed in a pathogen-free facility with 12 h light–dark cycle with free access to a standard mouse chow (RM-1; Special Diet Services, UK) diet and water. High-fat diet (HFD) cohorts were placed on a high-sucrose, high-fat diet (D12331; Research Diets, New Brunswick, NJ, USA) for 12 weeks from 7 weeks of age. For the chow diet cohort, metabolic exploration was performed on each animal within a 2 week window at each stage (8-week-old and 16-week-old mice). All in vivo procedures described were performed at the Imperial College Central Biomedical Service and approved by the UK Home Office Animals Scientific Procedures Act, 1986 (PPL PA03F7F0F).

**In vivo metabolic assays** Glucose and insulin tolerance were assessed on fasted mice after oral or i.p. administration of glucose or insulin. Blood was collected to assess plasma insulin levels after oral or i.p. administration of glucose. Plasma insulin was measured using an ELISA kit (Crystal Chem, Netherlands) or a homogeneous time-resolved fluorescence (HTRF) kit (Cisbio, France).

## Protein isolation and Western immunoblotting

Antibodies used for immunoblotting are TCF4/*TCF7L2* (C48H11) (#2569, 1:500, Cell signalling, NEB, UK), phospho-AKT (#9271, 1:1000, Cell signalling, NEB, UK), total-AKT (#9272, 1:1000, Cell signalling, NEB, UK), GAPDH (#2118, 1:10000, Cell signalling, NEB, UK) and alpha-tubulin (T5168, 1:10000, Sigma-Aldrich, UK).

## Pancreatic islet isolation and in vitro insulin secretion

Pancreatic islets were isolated by collagenase digestion. Insulin secretion assays were performed on batches of ten size-matched islets and incubated for 30 min in Krebs-Ringer HEPES bicarbonate (KHB) solution with glucose (3–17 mmol/l) or KCl (30 mmol/l). Secreted and total insulin were quantified using a HTRF kit.

**Intracellular free calcium imaging** Intact isolated islets were incubated with Fura-8 AM (Invitrogen, UK) and incubated in KHB containing glucose (3–17 mmol/l) or KCl (30 mmol/l).  $Ca^{2+}$ -dependent fluorescence was imaged using a Nipkow spinning disk head (Yokogawa CSU-10; Runcorn, UK).

**Analysis of circulating factors in plasma and serum** Blood was obtained from the tail vein of mice in the fed state. The concentrations of GLP-1, glucose-dependent insulinotropic polypeptide (GIP), leptin, adiponectin, plasminogen activator inhibitor-1 (PAI-1), fatty acid binding protein 4 (FABP4), resistin, NEFA and dipeptidyl peptidase 4 (DPP4) were measured using the kits detailed in [ESM](#) Methods.

## Histology

Epididymal adipose tissue was harvested, fixed overnight in 10% (v/v) formalin and embedded in paraffin wax. Tissue slices (5  $\mu$ m) were stained with H&E (Sigma-Aldrich, UK) for morphological analysis using a widefield Axiovert 200M microscope (Zeiss, Germany) in the Facility for Imaging by Light Microscopy (Imperial College London).

## RNA isolation and quantitative PCR

RNA was isolated from epididymal and subcutaneous adipose tissue, liver and pancreatic islets. Gene expression was



determined by quantitative RT-PCR. Primer sequences are listed in ESM Table 1.

## Statistical analysis

GraphPad Prism 8.4 was used for statistical analysis (GraphPad Software, USA). Significance was evaluated by unpaired Student *t* tests and one- or two-way ANOVA, with Tukey's multiple comparison test. A *p* value of <0.05 was considered statistically significant. Data are shown as mean ± SEM.

## Results

**Reduced TCF7L2 expression in adipose tissue does not affect body weight but increases fat mass** We generated a mouse line in which *Tcf7l2* was deleted selectively in adipocytes through the expression of *Cre* recombinase under the control of the *Adipoq* promoter. In aTCF7L2het mice, *Tcf7l2* mRNA levels were decreased in inguinal adipose tissue (iWAT) by  $39.8 \pm 13.3\%$ ,  $p = 0.02$ , while in epididymal white adipose tissue (eWAT) a non-statistically significant reduction ( $46.3 \pm 20.1\%$ ;  $p = 0.09$ ) was observed compared with control mice. In aTCF7L2hom mice, expression was reduced by  $77.3 \pm 11.2\%$  and  $57.8 \pm 20.2\%$ , respectively in eWAT ( $p = 0.008$ ) and iWAT ( $p = 0.003$ ) compared with control mice. Conversely, no changes in *Tcf7l2* expression were apparent in liver or pancreatic islets from aTCF7L2het and aTCF7L2hom mice compared with controls (Fig. 1a). Correspondingly, expression of the two TCF7L2 protein isoforms (79 kDa and 58 kDa) in eWAT was significantly reduced by  $77 \pm 17\%$  and  $80 \pm 14\%$  in aTCF7L2hom mice, while TCF7L2 protein levels were not different between aTCF7L2het and controls (Fig. 1b, c). Body weight in male (Fig. 1d) and female (Fig. 1e) aTCF7L2het and aTCF7L2hom mice was similar to that of control mice maintained on a normal chow diet (NC). No apparent changes in adipocyte morphology were observed in male mice maintained under NC (Fig. 1f). Likewise, adipose-selective *Tcf7l2* deletion did not affect fat or lean mass in 8-week-old male or female mice, as assessed by echoMRI (Fig. 1g, i, k, m). However, in older male aTCF7L2het mice, fat mass was increased (1.4-fold), and lean mass was decreased (0.9-fold; Fig. 1h, j) vs that in male control mice. Female mice showed no difference in body fat composition between the three groups (Fig. 1l and n).

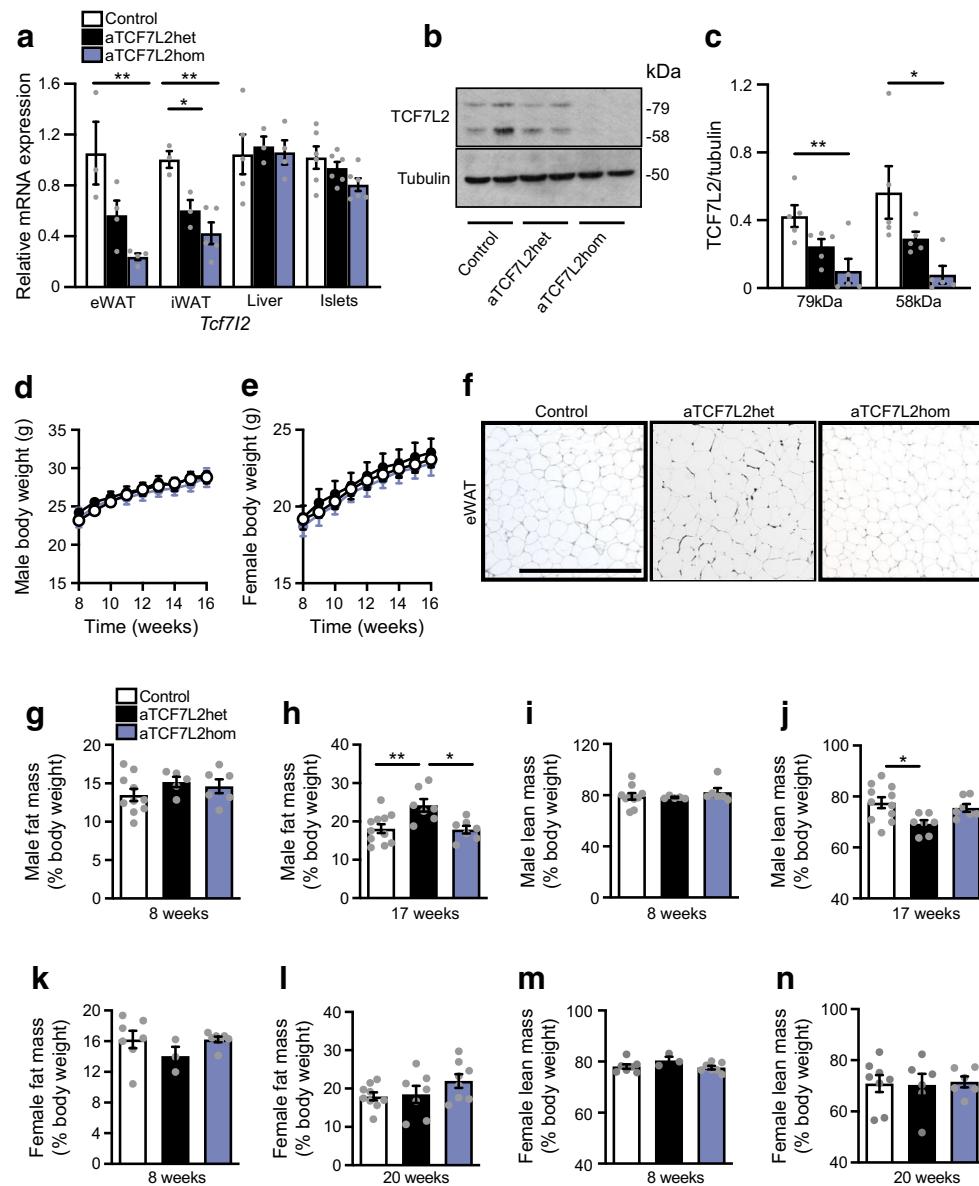
**Adipocyte-selective *Tcf7l2* deletion leads to impaired glucose tolerance, with no effect on insulin sensitivity** Next, we explored the effects of adipocyte-selective *Tcf7l2* ablation on whole body glucose handling. Glucose challenge was performed in male and female mice at 8 and 16 weeks of age. At 8 weeks, blood glucose levels after i.p. injection of glucose were similar in aTCF7L2het and aTCF7L2hom mice and sex-

matched littermate controls (Fig. 2a, Fig. 3a). At 16 weeks, glucose tolerance was impaired in male aTCF7L2het mice vs controls ( $17.7 \pm 1.0$  mmol/lvs  $13.4 \pm 0.8$  mmol/l at 15 min after i.p. injection of glucose,  $p = 0.01$ ; Fig. 2b). Eight-week-old aTCF7L2het and aTCF7L2hom mice had similar oral glucose tolerance to control mice (Fig. 2c). However, oral glucose tolerance was impaired in 16-week-old aTCF7L2hom mice compared with aTCF7L2het and control mice ( $p = 0.006$  at 15 min, Fig. 2d). There were no differences in glucose tolerance between the three groups of female mice, regardless of age (Fig. 3a–c). For each sex, body insulin sensitivity was unaffected across the genotypes (Fig. 2e, Fig. 3d).

**Adipocyte-selective *Tcf7l2* deletion leads to defective pancreatic beta cell function** To assess whether impaired i.p. and oral glucose challenge in 16-week-old male aTCF7L2het and aTCF7L2hom mice, respectively (Fig. 2b and d), was due to defective insulin secretion, beta cell secretory capacity was measured. Plasma insulin levels were similar after i.p. glucose injection (Fig. 2f) or after oral glucose administration (Fig. 2g) in aTCF7L2het and aTCF7L2hom mice vs controls. Insulin secretion following stimulations with 17 mmol/l glucose was impaired in islets isolated from aTCF7L2hom mice vs that in islets from controls ( $0.32 \pm 0.08\%$  of vs  $0.59 \pm 0.13\%$ , respectively, corresponding to a  $0.54 \pm 0.13$ -fold decrease; Fig. 2h), while responses to KCl (30 mmol/l) were not different between islets from aTCF7L2hom and those from control mice (Fig. 2h). Insulin secretion in aTCF7L2het islets showed no statistically significant differences in response to high glucose ( $p = 0.1$ ) or KCl ( $p = 0.8$ ) vs that in control islets.

To explore the origins of the insulin secretory defects observed in isolated islets (Fig. 2h), we measured changes in cytosolic free calcium ( $Ca^{2+}$ ) of isolated islets in response to incubation with varying concentrations of glucose (3–17 mmol/l) or KCl (Fig. 2i). Islets from aTCF7L2hom male mice showed a diminished glucose-induced rise in cytosolic  $Ca^{2+}$  compared with aTCF7L2het animals ( $p = 0.01$  at  $t = 7.3$  min), while no statistical differences in  $Ca^{2+}$  dynamics were observed compared with control mice (Fig. 2i). Islets from aTCF7L2het male mice showed an elevated  $Ca^{2+}$  response to KCl compared with controls ( $p = 0.01$ ; Fig. 2i).

To examine the potential effects of adipose-selective *Tcf7l2* ablation on beta cell identity we measured the expression of signature genes associated with this and other islet cell types. No differences were observed in the expression of the insulin (*Ins1*, *Ins2*), or glucagon (*Gcg*) genes in islets across genotypes. However, a significant reduction in the expression of *Glut2* (also known as *Slc2a2*), usually confined to beta cells, was observed in aTCF7L2hom mice in comparison with controls ( $0.73 \pm 0.06$  in aTCF7L2hom vs  $1.00 \pm 0.03$  in controls,  $p = 0.007$ ; Fig. 2j). In vivo and in vitro insulin secretion was unchanged in female aTCF7L2het and aTCF7L2hom mice vs controls (Fig. 3e, f).

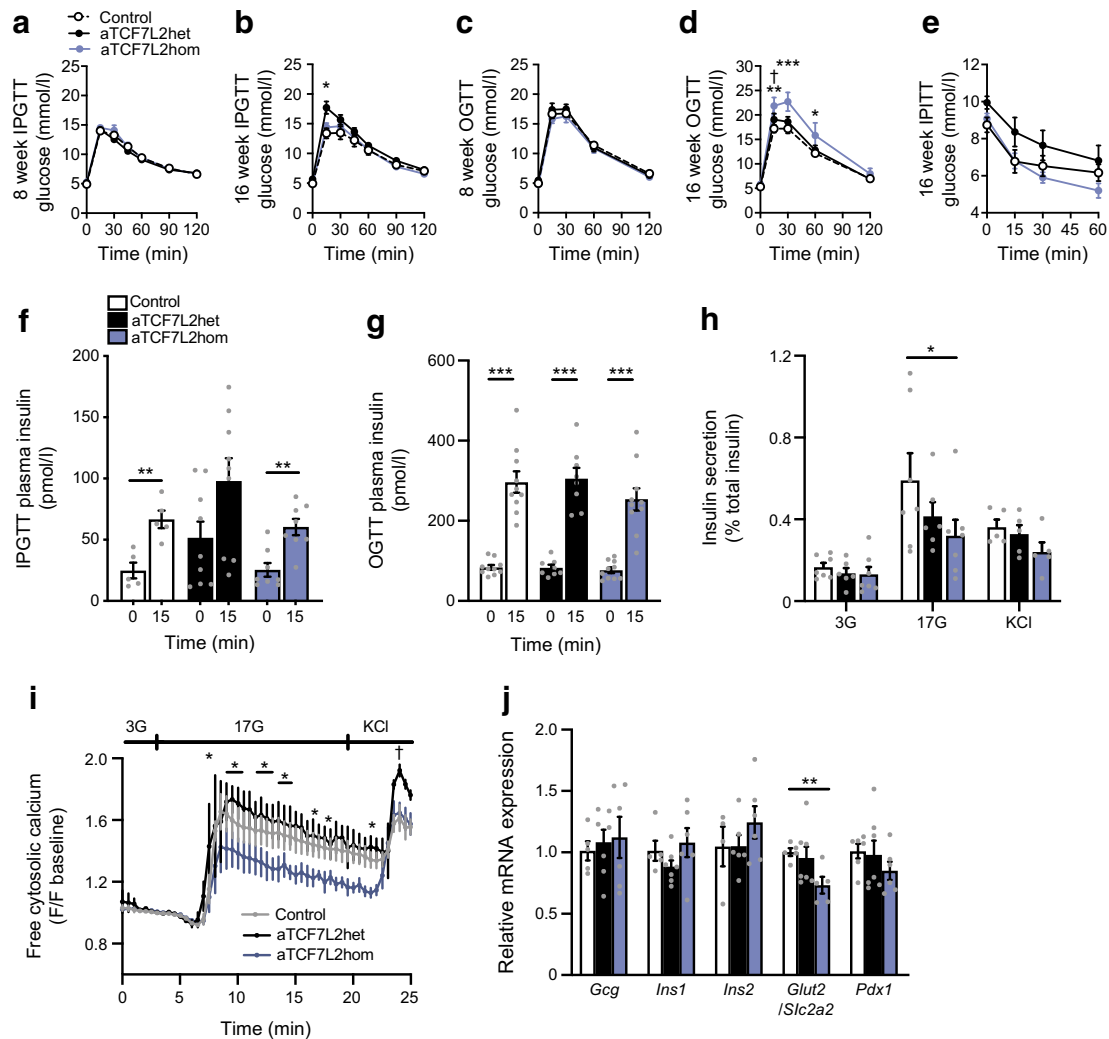


**Fig. 1** Effects of adipocyte-selective *Tcf7l2* deletion on body weight and fat mass in male and female mice on an NC diet. **(a)** *Tcf7l2* mRNA expression by quantitative RT-PCR in eWAT, iWAT, liver and isolated islets with *Gapdh*, *Actb* or *Ppia* used as internal normalisation control genes ( $n = 3\text{--}6$  mice/genotype). One-way ANOVA with Tukey's post hoc test,  $**p < 0.01$  aTCF7L2hom and  $*p < 0.05$  aTCF7L2het vs control, respectively. **(b)** Representative western blot of TCF7L2 protein expression in eWAT. **(c)** Densitometry quantification of TCF7L2 expression by western blotting in eWAT ( $n = 5$  mice/genotype). One-way ANOVA with Tukey's post hoc test,  $**p < 0.01$  and  $*p < 0.05$  aTCF7L2hom vs control. **(d)** Body weight in male and **(e)** female mice on an NC (males:  $n = 10$  control mice,  $n = 9$  aTCF7L2het mice,  $n = 6$  aTCF7L2hom mice; females:  $n = 13$  control mice,  $n = 7$  aTCF7L2het mice,  $n = 7$  aTCF7L2hom mice). **(f)** H&E staining of eWAT from mice on an NC. Scale bar, 100  $\mu\text{m}$ . **(g)** Fat mass in 8-week-old males ( $n = 10$  control mice,

$n = 5$  aTCF7L2het mice,  $n = 6$  aTCF7L2hom mice), **(h)** in 17-week-old males ( $n = 11$  control mice,  $n = 6$  aTCF7L2het mice,  $n = 7$  aTCF7L2hom mice). One-way ANOVA with Tukey's post hoc test,  $**p < 0.01$  aTCF7L2het vs control and  $*p < 0.05$  aTCF7L2hom vs aTCF7L2het. **(i)** Lean mass in 8-week-old males ( $n = 10$  control mice,  $n = 5$  aTCF7L2het mice,  $n = 6$  aTCF7L2hom mice) and **(j)** in 17-week-old males ( $n = 11$  control mice,  $n = 6$  aTCF7L2het mice,  $n = 7$  aTCF7L2hom mice). One-way ANOVA with Tukey's post hoc test,  $*p < 0.05$  aTCF7L2het vs control. **(k)** Fat mass in 8-week-old females ( $n = 7$  control mice,  $n = 3$  aTCF7L2het mice,  $n = 7$  aTCF7L2hom mice) and **(l)** in 20-week-old females ( $n = 9$  control mice,  $n = 7$  aTCF7L2het mice,  $n = 8$  aTCF7L2hom mice). **(m)** Lean mass in 8-week-old females ( $n = 7$  control mice,  $n = 3$  aTCF7L2het mice,  $n = 7$  aTCF7L2hom mice) and **(n)** in 20-week-old females ( $n = 9$  control mice,  $n = 7$  aTCF7L2het mice,  $n = 8$  aTCF7L2hom mice). Data shown as mean  $\pm$  SEM

**Adipocyte TCF7L2 expression affects plasma levels of incretins and circulating NEFA** To investigate the causes of impaired oral glucose tolerance in male aTCF7L2hom mice, we measured the circulating levels of other factors known to

be involved in the regulation of blood glucose in 16-week-old animals. Circulating GIP levels in randomly fed (i.e. had free access to food) male aTCF7L2het and aTCF7L2hom mice (Fig. 4a) were significantly decreased compared with

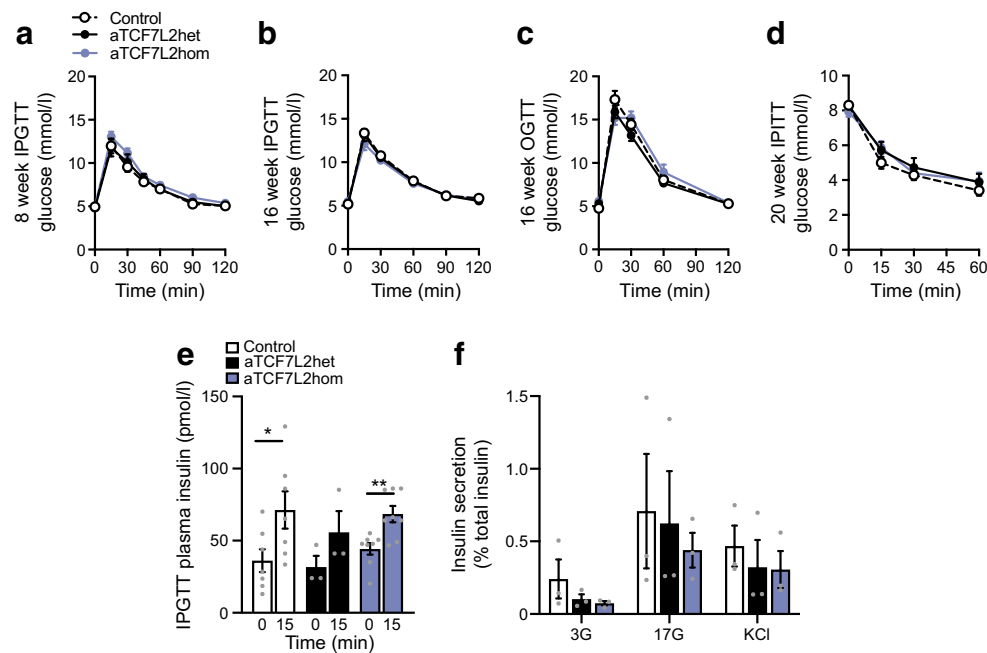


**Fig. 2** Effects of adipocyte-selective *Tcf7l2* deletion on glucose tolerance and beta cell function in male mice maintained on an NC diet. **(a)** IPGTT in 8-week-old male mice ( $n = 10$  control mice,  $n = 10$  aTCF7L2het mice,  $n = 9$  aTCF7L2hom mice) maintained on an NC, and **(b)** in 16-week-old male mice ( $n = 10$  control mice,  $n = 10$  aTCF7L2het mice,  $n = 9$  aTCF7L2hom mice).  $*p < 0.05$  aTCF7L2het vs control group by two-way ANOVA with Tukey's post hoc test. **(c)** OGTT in 8-week-old male mice ( $n = 10$  control mice,  $n = 6$  aTCF7L2het mice,  $n = 6$  aTCF7L2hom mice), and **(d)** 16-week-old male mice ( $n = 10$  control mice,  $n = 6$  aTCF7L2het mice,  $n = 6$  aTCF7L2hom mice).  $***p < 0.001$ ,  $**p < 0.01$ ,  $*p < 0.05$  aTCF7L2hom vs control and  $\dagger p < 0.05$  aTCF7L2hom vs aTCF7L2het by two-way ANOVA with Tukey's post hoc test. **(e)** IPITT in 16-week-old mice ( $n = 10$  control mice,  $n = 10$  aTCF7L2het mice,  $n = 10$  aTCF7L2hom mice). **(f)** Plasma insulin levels after i.p. injection of glucose (3 g/kg) in 16-week-old male mice ( $n = 5$  control mice,  $n = 9$  aTCF7L2het mice,  $n = 8$  aTCF7L2hom mice).  $**p < 0.01$  15 min vs 0 min condition by unpaired Student's *t* test. **(g)**

Insulin plasma levels after oral administration of glucose (3 g/kg) in 16-week-old male mice ( $n = 10$  control mice,  $n = 7$  aTCF7L2het mice,  $n = 9$  aTCF7L2hom mice).  $***p < 0.001$  15 min vs 0 min condition by unpaired Student's *t* test. **(h)** Insulin secretion by isolated islets from 17-week-old male mice ( $n = 5-7$  mice/genotype).  $*p < 0.05$  aTCF7L2het vs control by two-way ANOVA with Tukey's post hoc test. **(i)** Measurement of dynamic changes in intracellular calcium concentrations in isolated islets from 17-week-old male mice in response to perfusion of glucose (3 mmol/l, 3G; 17 mmol/l, 17G) and KCl (30 mmol/l) and represented as fold change of fluorescence intensity (F) compared with basal state at low glucose ( $n = 3$  mice/genotype).  $*p < 0.05$  aTCF7L2het vs aTCF7L2hom,  $\dagger p < 0.05$  aTCF7L2het vs control by two-way ANOVA with Tukey's post hoc test. **(j)** mRNA expression profiling by quantitative RT-PCR of key pancreatic islet markers in isolated islets from 17-week-old male mice; each dot represents data from one mouse.  $**p < 0.01$  aTCF7L2hom vs control by two-way ANOVA with Tukey's post hoc test. Data are shown as mean  $\pm$  SEM

those in age- and sex-matched littermate control mice ( $421.8 \pm 24.6$  ng/ml [ $p = 0.002$ ] and  $335.1 \pm 21.4$  ng/ml [ $p < 0.0001$ ], respectively, vs  $583.8 \pm 39.5$  ng/ml in controls, corresponding to a  $0.4 \pm 0.1$ -fold decrease). Likewise, circulating GLP-1 levels in randomly fed male aTCF7L2hom mice (Fig. 4b) were decreased compared with controls

( $23.7 \pm 6.8$  ng/ml vs  $57.6 \pm 11.6$  ng/ml,  $p = 0.04$ , corresponding to a  $0.6 \pm 0.1$ -fold decrease). In aTCF7L2het mice, changes in GLP-1 levels did not reach statistical significance ( $27.1 \pm 5.8$  ng/ml, vs  $57.6 \pm 11.6$  ng/ml,  $p = 0.06$ ). Plasma DPP4 levels in male aTCF7L2hom mice were not different than those in controls (Fig. 4c).



**Fig. 3** Effects of adipocyte-selective *Tcf7l2* deletion on glucose tolerance and beta cell function in female mice maintained on an NC. **(a)** IPGTT in 8-week-old female mice maintained on an NC ( $n = 10$  control mice,  $n = 10$  aTCF7L2het mice,  $n = 8$  aTCF7L2hom mice) and **(b)** in 16-week-old female mice ( $n = 10$  control mice,  $n = 10$  aTCF7L2het mice,  $n = 8$  aTCF7L2hom mice). **(c)** OGTT in 16-week-old female mice ( $n = 6$  control mice,  $n = 9$  aTCF7L2het mice,  $n = 4$  aTCF7L2hom mice). **(d)** IPITT in 20-week-old female mice ( $n = 10$  control mice,  $n = 7$

aTCF7L2het mice,  $n = 5$  aTCF7L2hom mice). **(e)** Insulin plasma levels after glucose injection (3 g/kg) in 20-week-old female mice on an NC ( $n = 7$  control mice,  $n = 3$  aTCF7L2het mice,  $n = 8$  aTCF7L2hom mice);  $*p < 0.05$ ,  $**p < 0.01$  15 min vs 0 min condition by unpaired Student's *t* test. **(f)** Insulin secretion on isolated islets from 20-week-old female mice during static incubation with 3 mmol/l glucose (3G), 17 mmol/l glucose (17G) and 30 mmol/l KCl ( $n = 3$  mice/genotype). Data are shown as mean  $\pm$  SEM

Suggesting a role for adipose tissue TCF7L2 as a regulator of fatty acid release from these cells, plasma levels of circulating NEFA and the lipid carrier FABP4 were increased in aTCF7L2hom mice compared with age- and sex-matched littermate controls (NEFA:  $0.79 \pm 0.04$  vs  $0.62 \pm 0.04$  mmol/l, respectively,  $p = 0.03$ , corresponding to a  $1.3 \pm 0.1$ -fold increase; FABP4:  $75.0 \pm 13.5$  ng/ml vs  $42.1 \pm 6.0$  ng/ml, respectively,  $p = 0.05$ , corresponding to a  $1.8 \pm 0.3$ -fold increase; Fig. 4d, e). Plasma levels of adiponectin, leptin, resistin and PAI-1 in the fed state were not different in aTCF7L2het or aTCF7L2hom mice compared with those in littermate control mice (Fig. 4f, g; ESM Fig. 1a, b).

We next explored whether the above effects of *Tcf7l2* deletion may reflect altered insulin signalling in adipocytes. Akt (also known as protein kinase B) Ser473 phosphorylation was elevated under basal conditions prior to insulin stimulation in aTCF7L2hom male mice (Fig. 4h, i). The difference in Akt phosphorylation after insulin stimulation (i.e. fold change above basal) did not reach statistical significance in adipocytes from aTCF7L2hom mice vs those from littermate controls ( $p = 0.07$ ; Fig. 4j).

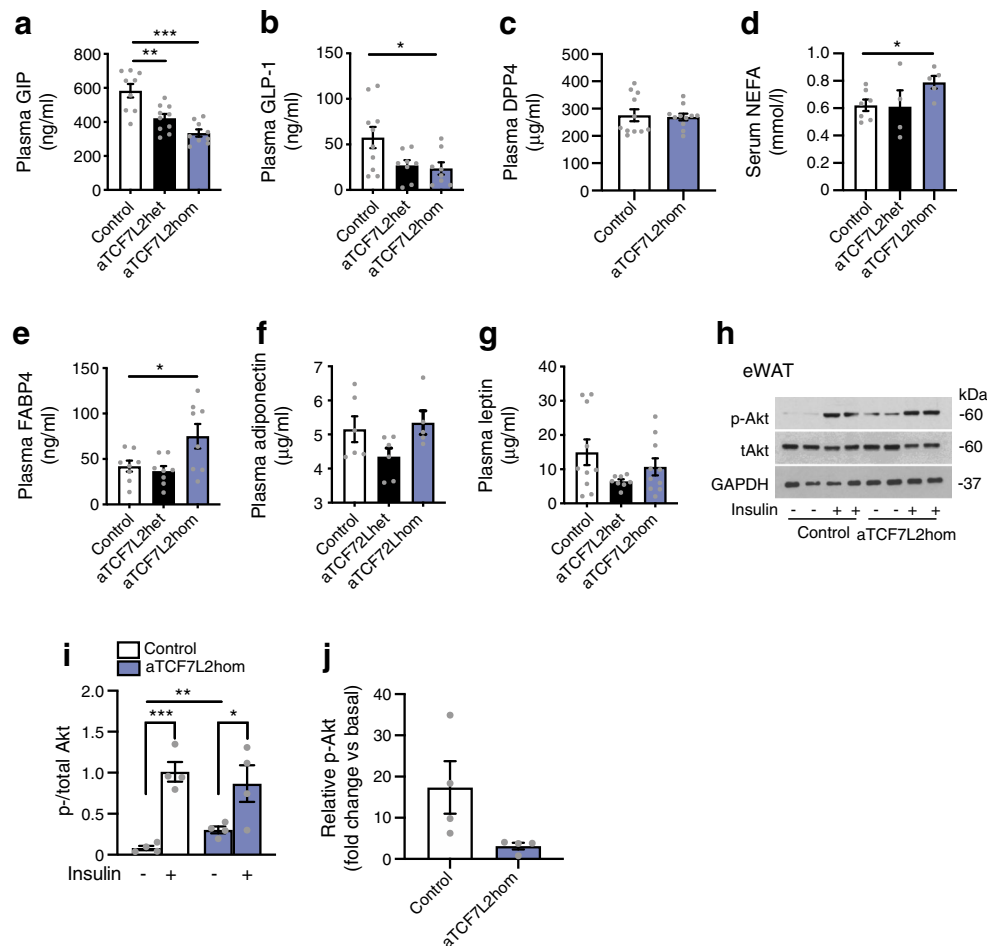
**Exposure to an HFD reduced insulin secretion in aTCF7L2hom mice** To determine whether the absence of TCF7L2 in adipocytes may influence the response of glucose homeostasis to a metabolic stress, we maintained male aTCF7L2hom or

control mice on an HFD for up to 12 weeks. No significant differences in changes in body weight over time were observed between aTCF7L2hom mice and littermate controls (Fig. 5a). After 9 weeks' exposure to an HFD, a delayed blood glucose peak was observed in aTCF7L2hom compared with controls in response to i.p. glucose injection (Fig. 5b). No significant differences were observed between the two groups of mice during OGTT (Fig. 5d, e) or in insulin sensitivity (Fig. 5f) after exposure to an HFD for 12 weeks. Insulin secretion was impaired (at 15 min,  $526.2 \pm 223.1$  in aTCF7L2hom vs  $881.9 \pm 166.9$  pmol/l in control,  $p = 0.02$ , corresponding to a  $0.5 \pm 0.1$ -fold decrease; Fig. 5h) during in vivo oral glucose challenge in aTCF7L2hom mice compared with littermate control mice, while no differences in plasma insulin content were observed following i.p. glucose injection (Fig. 5g). Ex vivo insulin release in response to glucose (17 mmol/l), GLP-1 (20 nmol/l) and KCl (30 mmol/l) was found to be no different between islets isolated from aTCF7L2hom mice and control mice following 12 weeks of an HFD (Fig. 5i).

## Discussion

The overall aim of the present study was to explore the possibility that changes in *Tcf7l2* expression in the adipocyte may affect whole body glucose homeostasis and, if so, to explore





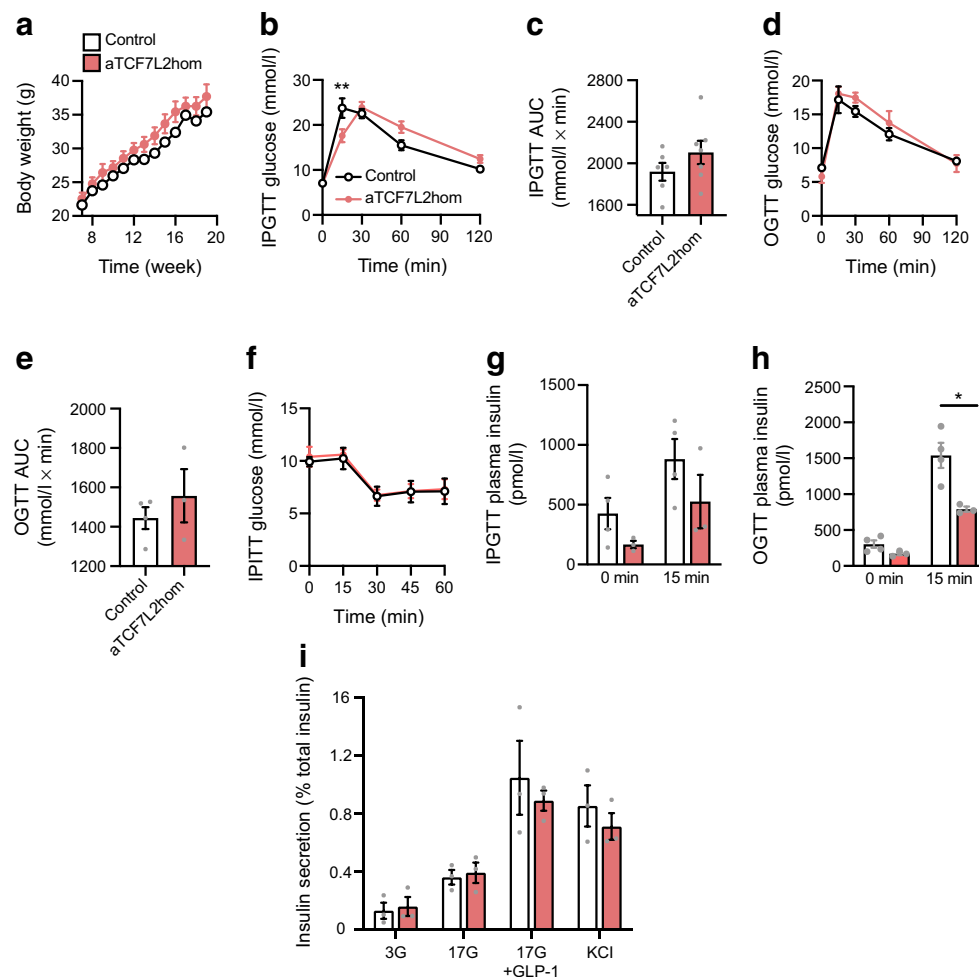
**Fig. 4** NEFA and incretin levels depend on adipocyte *Tcf7l2* expression. **(a)** GIP plasma levels in the fed state. \*\*\* $p < 0.001$  aTCF7L2homo vs control and \*\* $p < 0.01$  aTCF7L2het vs control by one-way ANOVA with Tukey's post hoc test. **(b)** GLP-1 plasma levels in the fed state. \* $p < 0.05$  aTCF7L2homo vs control by one-way ANOVA with Tukey's post hoc test. **(c)** DPP4 plasma levels. **(d)** NEFA serum levels. \* $p < 0.05$  aTCF7L2homo vs control by one-way ANOVA with Tukey's post hoc test. **(e)** FABP4 plasma levels. \* $p < 0.05$  aTCF7L2homo vs control by one-way ANOVA with Tukey's post hoc test. **(f)** Adiponectin plasma levels. **(g)** Leptin plasma levels. **(h)** Representative western blot of phosphorylated and total Akt from eWAT homogenates harvested from male mice

10 min after i.p. injection of sterile PBS (– insulin) or 1 U/kg of insulin (+ insulin) ( $n = 4$  mice/genotype). **(i)** Densitometry analysis of  $n = 4$  mice per genotype \*\*\* $p < 0.001$  insulin (+) vs insulin (–) condition in control by unpaired Student's *t* test, \*\* $p < 0.01$  insulin (–) in aTCF7L2homo vs insulin (–) control by unpaired Student's *t* test, \* $p < 0.05$  insulin (+) vs insulin (–) condition in aTCF7L2homo by unpaired Student's *t* test. **(j)** Fold change of phosphorylated Akt expression after insulin stimulation over basal (– insulin).  $p = 0.07$  aTCF7L2homo vs control by unpaired Student's *t* test. Data shown as mean  $\pm$  SEM

the mechanisms involved. While our studies mimic alterations in *TCF7L2* expression that may occur in human adipose tissue as a function of rs7903146 genotype (see below), the extent of these changes in the mouse adipocyte are likely to be of much greater magnitude. We show that forced changes in *Tcf7l2* expression in murine adipose tissue leads to alterations not only in adipocyte function but also to the function of other tissues involved in the regulation of energy homeostasis in a sex- and age-dependent manner. Of note, the severity of the phenotypes was broadly dependent on the extent of *Tcf7l2* perturbation.

Wnt signalling involves an association between  $\beta$ -catenin and a member of the TCF family, such as TCF7L2, TCF7, TCF7L1 or lymphoid enhancer-binding factor-1 (LEF-1) [1].

The availability of free  $\beta$ -catenin able to enter the nucleus and bind TCF7L2 is crucial to activate downstream target genes. However, the regulation of TCF7L2 content is also important [20]. Previous studies have suggested that variation in *Tcf7l2* expression alters glucose metabolism and induces a type 2 diabetes phenotype [21], and that high-fat feeding modulates *Tcf7l2* expression in pancreatic islets, hepatocytes and adipocytes [22–24]. We show here that the extent *Tcf7l2* ablation impacts metabolic outcome. Thus, deletion of a single *Tcf7l2* allele led to impaired tolerance of glucose administered intraperitoneally, and generated distinct features of obesity-induced glucose intolerance, while biallelic *Tcf7l2* deletion impacted on the oral glucose tolerance, it might exert an effect through endocrine signalling molecules such as the incretins.



**Fig. 5** Effects of HFD on adipocyte-selective deletion of *Tcf7l2*. **(a)** Body weight in male mice during HFD feeding ( $n = 6$  mice/genotype). **(b)** IPGTT in male mice after 9 weeks of HFD ( $n = 6$  mice/genotype).  $**p = 0.003$  aTCF7L2hom vs control by two-way ANOVA followed by Bonferroni post hoc test. **(c)** AUC corresponding to **(b)**. **(d)** OGTT in male mice after 12 weeks of HFD ( $n = 4$  control mice,  $n = 3$  aTCF7L2hom mice). **(e)** AUC corresponding to **(d)**. **(f)** IPITT in male mice after 12 weeks of HFD ( $n = 3$  mice/genotype). **(g)** Insulin plasma levels after i.p. injection of glucose (2 g/kg) in male mice following

12 weeks of HFD ( $n = 4$  control mice,  $n = 3$  aTCF7L2hom mice). **(h)** Insulin plasma levels after oral administration of glucose (2 g/kg) in male mice following 12 weeks of HFD ( $n = 4$  control mice,  $n = 3$  aTCF7L2hom mice).  $*p < 0.05$  aTCF7L2hom vs control at 15 min condition by unpaired Student's *t* test. **(i)** Insulin secretion on isolated islets from male mice after 12 weeks of HFD during static incubation of glucose (3 mmol/l, 3G; 17 mmol/l, 17G), a combination of 17 mmol/l glucose and 20 nmol/l GLP-1 (17G+GLP-1) and KCl (30 mmol/l), ( $n = 3$  mice/genotype). Data shown as mean  $\pm$  SEM

We note that the impact of the deletion of a single *Tcf7l2* allele on oral glucose and GLP-1 levels in randomly fed mice may not have reached significance due to the low number of mice analysed. A more thorough examination in the differences in phenotype could not be conducted in the present study because of disruptions to the breeding and experimental programme resulting from the coronavirus disease-2019 (COVID-19) pandemic. These questions merit further investigation at a future date.

Wnt and its effectors ( $\beta$ -catenin and TCF7L2) are critical for adipogenesis [14–16]. However, the persistence of this signalling module into adulthood indicates that it is also important in the mature adipocyte. In the present study, we found that young mice lacking TCF7L2 in the adipocyte displayed no alteration of glucose tolerance or body

composition, while defects appeared with age in male mice (Fig. 1g, h, Fig. 2a, b). Interestingly, female mice were largely unaffected by the loss of TCF7L2 from the adipocyte (Fig. 3), consistent with a role for female hormones in the maintenance of glucose homeostasis and differences in fat distribution between male and female mice (Figs 1, 2 and 3). Correspondingly, Tian et al [25] have previously revealed crosstalk between Wnt signalling and female hormones through TCF7L2. We therefore conducted our studies on the effects of HFD exposure (see below) in male mice only.

Impaired adipocyte function has previously been shown to impact beta cell function by various mechanisms, including the release of adipokines (reviewed in [26]). Male mice lacking both *Tcf7l2* alleles selectively in adipocytes and maintained on an NC diet displayed an impaired response to oral

glucose challenge (Fig. 2d) but normal tolerance to i.p. injection of the sugar (Fig. 2b). This suggests an abnormal incretin effect, defined as the postprandial insulin response provoked by incretin hormones such as GLP-1 and GIP. However, insulin release in response to oral glucose was maintained (Fig. 2g) with lowered circulating levels of GIP and GLP-1 (Fig. 4a, b), while glucose-stimulated insulin secretion *ex vivo* from isolated islets was impaired (Fig. 2h). Our data therefore suggest that a mechanism exists to maintain insulin release *in vivo* after deletion of *Tcf7l2* from adipocytes when the incretin effect is compromised. One possible explanation for this difference between *in vivo* and *ex vivo* glucose-stimulated insulin secretion is that elevated fatty levels compensate in part for the lowered levels of circulating incretins, acting to amplify insulin release through the action of fatty acid receptors. NEFA, and specifically long-chain fatty acids, potentiate glucose-stimulated insulin secretion [27, 28]. Moreover, a direct insulinotropic action of FABP4—a cytosolic lipid chaperone expressed and secreted by white and brown adipocytes whose levels were increased in aTCF7L2<sup>hom</sup> mice, as described below—may act directly on pancreatic beta cells, as demonstrated in previous studies showing that recombinant FABP4 administration enhanced glucose-stimulated insulin secretion *in vitro* and *in vivo* [29, 30]. This is consistent with recently published data indicating that an elevated FABP4 level is associated with the incidence of type 2 diabetes in humans [31, 32].

How might depletion of *Tcf7l2* from adipocytes lead to a decrease in the circulating levels of GLP-1 and GIP? Decreased plasma incretin content in aTCF7L2<sup>hom</sup> mice is unlikely to be due to an increase in the rate of degradation of these hormones in the bloodstream, as no change was found in circulating DPP4 in aTCF7L2<sup>hom</sup> mice (Fig. 4c). Providing potential candidates as regulators of the corresponding enteroendocrine cells, we observed elevated circulating NEFA and FABP4 levels (Fig. 4d, e), after TCF7L2 deletion from the adipocyte. However, *Fabp4* expression at the mRNA level was not altered in aTCF7L2<sup>hom</sup> mice, suggesting regulation at a later stage in biosynthesis, or conceivably an alternative source of the adipokine, such as the liver. In addition, our measurements of GLP-1 and GIP were performed in randomly fed mice. Future experiments might include a more in-depth analysis of the release of the incretins in response to an oral glucose load and an assessment of whether incretin release is affected by adipose-selective *Tcf7l2* deletion in mice that have been maintained on an HFD. Measurements of food intake and energy expenditure would also be of merit.

Wnt and TCF7L2 are regulators of serum and hepatic triacylglycerol content [25], consistent with elevated plasma triacylglycerol associated with risk rs7903146 alleles [33]. Martchenko and colleagues [34] have recently reported fatty acid-induced lowering of circadian release of GLP-1 from L cells as a result of decreased *Bmal1* expression. Similar

findings on the inhibition by fatty acids of GLP-1 secretion have been reported by others [35, 36]. Activation of fatty acid receptors (FFARs) with the FFAR1/GPR40 agonist TAK-875 [37] or with short-chain fatty acids (FFAR2/GPR43) [38] acutely increases GLP-1 secretion from L cells. This suggests a balance between positive shorter term effects and more chronic ‘lipotoxic’ effects of NEFA may govern overall incretin production, with the latter predominating after *Tcf7l2* deletion in adipocytes.

To explore further the direct role of TCF7L2 in lipid metabolism, future studies will be necessary to assess lipolysis in adipocytes lacking TCF7L2 and peripheral insulin action. Finally, we note that selective loss of TCF7L2 from mouse beta cells lowers GLP-1 receptor expression [3]. This is in line with data showing that carriers of the risk allele of rs7903146 exhibit incretin resistance [39, 40].

Our data would appear partly to contradict a previous study wherein post-glucose challenge GLP-1 levels were not different between human carriers of the risk vs non-risk allele of rs7903146 [40]. However, the knockout strategy that we employed in the mouse results in a much more drastic change in *Tcf7l2* gene expression than that observed in humans bearing the risk allele of rs7903146. We note that we measured plasma GIP and GLP-1 levels in randomly fed mice; measurement of GIP and GLP-1 responses to a glucose bolus in aTCF7L2 knockout and control mice may provide a better indication as to whether secretion from the relevant enteroendocrine cells, rather than subsequent metabolism of the peptides, is affected.

*In vivo* glucose-stimulated insulin secretion in aTCF7L2<sup>hom</sup> male mice was impaired by exposure to an HFD (Fig. 5h), a finding reminiscent of the impact of this regimen on TCF7L2 deletion-induced impairments in insulin secretion [2, 3, 41]. Surprisingly, however, high-fat feeding had only minor effects on the impact on glucose tolerance. Future studies will need to assess the effects of an HFD on incretin and insulin secretion in beta cells, and to characterise the impact of an HFD on aTCF7L2<sup>het</sup> mice, as explorations were suspended during the COVID-19 pandemic. The size of the cohorts should be increased in future studies to determine the impact of an HFD. A further limitation of the present study is the lack of examination of a potential role for incretins in the impaired glucose tolerance observed in mice lacking TCF7L2 in adipocytes.

We would stress that there are several differences between our results and previous studies on TCF7L2 function in mouse adipocytes. When examining the effects of conditional deletion *Tcf7l2* in these cells, Chen et al [16] observed impairments in glucose tolerance after i.p. injection of glucose in 3-month-old male and female mice under standard diet associated with hepatic insulin resistance. In contrast, we observed no changes in glucose tolerance in NC-fed aTCF7L2 knockout female mice. Geoghegan et al [13] also generated a

conditional knockout of *Tcf7l2* in the adipocyte, reporting that knockout animals maintained on regular chow displayed no change in i.p. glucose tolerance, while exaggerated insulin resistance and impaired glucose tolerance were apparent after high-fat feeding [13]. The authors demonstrated a role for TCF7L2 in regulating lipogenic and lipolytic gene expression, finding impaired lipolysis in response to fasting. We note that slightly different genetic strategies were used to reduce TCF7L2 expression in these studies. Whereas we deleted exon 1 of *Tcf7l2*, Chen et al targeted exon 11 and Geoghegan et al targeted exon 5 [13, 16]. Genetic background, housing and experimental conditions may also have contributed to the differences observed.

Might changes in TCF7L2 expression in adipose tissue contribute to the effects of type 2 diabetes-associated variants in humans? Although rs7903146 variants in *TCF7L2* are not associated with changes in overall *TCF7L2* levels (i.e. the total of all isoforms), there are conflicting expression quantitative trait loci (eQTL) data regarding the association of rs7903146 with the expression of specific *TCF7L2* splice variants in subcutaneous fat [42–44]. These differences may reflect sample size and disease heterogeneity [45, 46]. Nevertheless, Mahajan and colleagues [47] recently identified genomic variants in the *TCF7L2* gene in linkage disequilibrium with rs7903146 which map to adipose and liver enhancers, and may therefore influence *TCF7L2* expression in these tissues. In addition, surgery-induced weight loss [48], plasma triacylglycerol and NEFA levels [49] have been shown to influence alternative splicing of *TCF7L2* in adipose tissue, with other evidence indicating that acute intake of fat leads to reduced expression of *TCF7L2* in human adipocytes [24]. Overall, these data suggest that changes in *TCF7L2* expression may be linked to adaptation to changes in fuel intake. While inspection of data in the GTEx database [50] does not reveal any genotype-driven alteration in subcutaneous or breast adipose tissue *TCF7L2* expression with rs7903146 genotype, studies on larger numbers of individuals may now be warranted.

**Conclusion** We demonstrate here a critical role for adipocyte TCF7L2 in systemic glucose homeostasis in mice. Thus, we provide unexpected insights into the action of TCF7L2, revealing a novel mechanism through which changes in the expression of this gene in adipocytes has sex-specific effects on glucose homeostasis, and may impact both insulin and incretin secretion. Although our data do not directly model the effects of rs7903146 on type 2 diabetes risk, in revealing a new level of complexity in diabetes-related gene action at the systems level, our findings may help in the development of novel personalised therapies.

**Acknowledgements** The authors would like to thank D. Withers (MRC London Institute of Medical Sciences [LMS] at Imperial College London)

for the *Adipoq-Cre* mouse, L. Lawrence (Research Histology Facility at Imperial College London) and S. Rothery (Facility for Imaging by Light Microscopy FILM at Imperial College London) for technical assistance with immunohistochemistry.

**Data availability** Data presented in this manuscript are available upon request from the corresponding authors.

**Funding** This project was supported by an Early Career Research grant from the Society for Endocrinology to M-SN-T. GdSX was supported by Diabetes UK (BDA13/0004672), European Foundation for the Study of Diabetes (EFSD/Boehringer-Ingelheim and EFSD/Lilly), University of Birmingham (research start-up grant and Research Development Fund-Publication Award) and the Rosetrees Trust. GAR was supported by Wellcome Trust Senior Investigator (WT098424AIA) and Investigator (212625/Z/18/Z) Awards, MRC Programme grants (MR/R022259/1, MR/J0003042/1, MR/L020149/1) an MRC Experimental Challenge Grant (DIVA, MR/L02036X/1), MRC (MR/N00275X/1), Diabetes UK (BDA/11/0004210, BDA/15/0005275, BDA 16/0005485) and Imperial Confidence in Concept (ICiC) grants, and a Royal Society Wolfson Research Merit Award. This project has received funding from the European Association for the Study of Diabetes, and University of Birmingham starter grant and Publication Data Award to GdSX, and European Union's Horizon 2020 research and innovation programme via the Innovative Medicines Initiative 2 Joint Undertaking under grant agreement No 115881 (RHAPSODY), which receives support from the European Union's Horizon 2020 research and innovation programme and EFPIA, to GAR. The study sponsor/funders were not involved in the design of the study; the collection, analysis, and interpretation of data; writing the report; and did not impose any restrictions regarding the publication of the report.

**Authors' relationships and activities** GAR has received grant funding from Sun Pharma and Les Laboratoires Servier. The remaining authors declare that there are no relationships or activities that might bias, or be perceived to bias, their work.

**Contribution statement** M-SN-T co-designed the study, collected, analysed, interpreted the data and drafted the manuscript. GdSX conceived and co-designed the study, collected, interpreted the data and substantially critically revised the manuscript. GAR conceived and supervised the study and co-wrote the manuscript. AM-S contributed to the collection of data and critically revised the manuscript for important intellectual content. IL contributed resources and critically revised the manuscript for important intellectual content. All authors gave final approval of the manuscript and gave consent to publication. GAR is the guarantor of this work.

**Open Access** This article is licensed under a Creative Commons Attribution 4.0 International License, which permits use, sharing, adaptation, distribution and reproduction in any medium or format, as long as you give appropriate credit to the original author(s) and the source, provide a link to the Creative Commons licence, and indicate if changes were made. The images or other third party material in this article are included in the article's Creative Commons licence, unless indicated otherwise in a credit line to the material. If material is not included in the article's Creative Commons licence and your intended use is not permitted by statutory regulation or exceeds the permitted use, you will need to obtain permission directly from the copyright holder. To view a copy of this licence, visit <http://creativecommons.org/licenses/by/4.0/>.



## References

- Jin T, Liu L (2008) The Wnt signaling pathway effector TCF7L2 and type 2 diabetes mellitus. *Mol Endocrinol* 22(11):2383–2392. <https://doi.org/10.1210/me.2008-0135>
- da Silva Xavier G, Mondragon A, Sun G et al (2012) Abnormal glucose tolerance and insulin secretion in pancreas-specific Tcf7l2-null mice. *Diabetologia* 55(10):2667–2676. <https://doi.org/10.1007/s00125-012-2600-7>
- Mitchell RK, Mondragon A, Chen L et al (2015) Selective disruption of Tcf7l2 in the pancreatic beta cell impairs secretory function and lowers beta cell mass. *Hum Mol Genet* 24(5):1390–1399. <https://doi.org/10.1093/hmg/ddu553>
- Boj SF, van Es JH, Huch M et al (2012) Diabetes risk gene and Wnt effector Tcf7l2/TCF4 controls hepatic response to perinatal and adult metabolic demand. *Cell* 151(7):1595–1607. <https://doi.org/10.1016/j.cell.2012.10.053>
- Oh KJ, Park J, Kim SS, Oh H, Choi CS, Koo SH (2012) TCF7L2 modulates glucose homeostasis by regulating CREB- and FoxO1-dependent transcriptional pathway in the liver. *PLoS Genet* 8(9):e1002986. <https://doi.org/10.1371/journal.pgen.1002986>
- Grant SFA (2019) The TCF7L2 locus: a genetic window into the pathogenesis of type 1 and type 2 diabetes. *Diabetes Care* 42(9):1624–1629. <https://doi.org/10.2337/dci19-0001>
- Strawbridge RJ, Dupuis J, Prokopenko I et al (2011) Genome-wide association identifies nine common variants associated with fasting proinsulin levels and provides new insights into the pathophysiology of type 2 diabetes. *Diabetes* 60(10):2624–2634. <https://doi.org/10.2337/db11-0415>
- Villareal DT, Robertson H, Bell GI et al (2010) TCF7L2 variant rs7903146 affects the risk of type 2 diabetes by modulating incretin action. *Diabetes* 59(2):479–485. <https://doi.org/10.2337/db09-1169>
- Le Bacquer O, Kerr-Conte J, Gargani S et al (2012) TCF7L2 rs7903146 impairs islet function and morphology in non-diabetic individuals. *Diabetologia* 55(10):2677–2681. <https://doi.org/10.1007/s00125-012-2660-8>
- Miguel-Escalada I, Bonas-Guarch S, Cebola I et al (2019) Human pancreatic islet three-dimensional chromatin architecture provides insights into the genetics of type 2 diabetes. *Nat Genet* 51(7):1137–1148. <https://doi.org/10.1038/s41588-019-0457-0>
- Nobrega MA (2013) TCF7L2 and glucose metabolism: time to look beyond the pancreas. *Diabetes* 62(3):706–708. <https://doi.org/10.2337/db12-1418>
- Cauchi S, Meyre D, Dina C et al (2006) Transcription factor TCF7L2 genetic study in the French population: expression in human beta-cells and adipose tissue and strong association with type 2 diabetes. *Diabetes* 55(10):2903–2908. <https://doi.org/10.2337/db06-0474>
- Geoghegan G, Simcox J, Seldin MM et al (2019) Targeted deletion of Tcf7l2 in adipocytes promotes adipocyte hypertrophy and impaired glucose metabolism. *Mol Metab* 24:44–63. <https://doi.org/10.1016/j.molmet.2019.03.003>
- Kennell JA, MacDougald OA (2005) Wnt signaling inhibits adipogenesis through beta-catenin-dependent and -independent mechanisms. *J Biol Chem* 280(25):24004–24010. <https://doi.org/10.1074/jbc.M501080200>
- Ross SE, Hemati N, Longo KA et al (2000) Inhibition of adipogenesis by Wnt signaling. *Science* 289(5481):950–953. <https://doi.org/10.1126/science.289.5481.950>
- Chen X, Ayala I, Shannon C et al (2018) The diabetes gene and Wnt pathway effector TCF7L2 regulates adipocyte development and function. *Diabetes* 67(4):554–568. <https://doi.org/10.2337/db17-0318>
- Palsgaard J, Emanuelli B, Winnay JN, Sumara G, Karsenty G, Kahn CR (2016) Cross-talk between insulin and Wnt signaling in preadipocytes. Role of Wnt co-receptor LDL receptor-related protein-5 (LRP5). *J Biol Chem* 291(32):16878. <https://doi.org/10.1074/jbc.A111.337048>
- Singh R, De Aguiar RB, Naik S et al (2013) LRP6 enhances glucose metabolism by promoting TCF7L2-dependent insulin receptor expression and IGF receptor stabilization in humans. *Cell Metab* 17(2):197–209. <https://doi.org/10.1016/j.cmet.2013.01.009>
- Eguchi J, Wang X, Yu S et al (2011) Transcriptional control of adipose lipid handling by IRF4. *Cell Metab* 13(3):249–259. <https://doi.org/10.1016/j.cmet.2011.02.005>
- Jin T (2016) Current understanding on role of the Wnt signaling pathway effector TCF7L2 in glucose homeostasis. *Endocr Rev* 37(3):254–277. <https://doi.org/10.1210/er.2015-1146>
- Savic D, Ye H, Aneas I, Park SY, Bell GI, Nobrega MA (2011) Alterations in TCF7L2 expression define its role as a key regulator of glucose metabolism. *Genome Res* 21(9):1417–1425. <https://doi.org/10.1101/gr.123745.111>
- Columbus J, Chiang Y, Shao W et al (2010) Insulin treatment and high-fat diet feeding reduces the expression of three Tcf genes in rodent pancreas. *J Endocrinol* 207(1):77–86. <https://doi.org/10.1677/JOE-10-0044>
- Ip W, Shao W, Chiang YT, Jin T (2012) The Wnt signaling pathway effector TCF7L2 is upregulated by insulin and represses hepatic gluconeogenesis. *Am J Physiol Endocrinol Metab* 303(9):E1166–E1176. <https://doi.org/10.1152/ajpendo.00249.2012>
- Justesen L, Ribel-Madsen R, Gillberg L et al (2019) TCF7L2 expression is regulated by cell differentiation and overfeeding in human adipose tissue. *Endocr Res* 44(3):110–116. <https://doi.org/10.1080/07435800.2019.1573827>
- Tian L, Shao W, Ip W, Song Z, Badakhshi Y, Jin T (2019) The developmental Wnt signaling pathway effector beta-catenin/TCF mediates hepatic functions of the sex hormone estradiol in regulating lipid metabolism. *PLoS Biol* 17(10):e3000444. <https://doi.org/10.1371/journal.pbio.3000444>
- Rosen ED, Spiegelman BM (2006) Adipocytes as regulators of energy balance and glucose homeostasis. *Nature* 444(7121):847–853. <https://doi.org/10.1038/nature05483>
- Latour MG, Alquier T, Oseid E et al (2007) GPR40 is necessary but not sufficient for fatty acid stimulation of insulin secretion in vivo. *Diabetes* 56(4):1087–1094. <https://doi.org/10.2337/db06-1532>
- Hauke S, Keutler K, Phapale P, Yushchenko DA, Schultz C (2018) Endogenous fatty acids are essential signaling factors of pancreatic  $\beta$ -cells and insulin secretion. *Diabetes* 67(10):1986–1998. <https://doi.org/10.2337/db17-1215>
- Wu LE, Samocha-Bonet D, Whitworth PT et al (2014) Identification of fatty acid binding protein 4 as an adipokine that regulates insulin secretion during obesity. *Mol Metab* 3(4):465–473. <https://doi.org/10.1016/j.molmet.2014.02.005>
- Kralisch S, Klötting N, Ebert T et al (2015) Circulating adipocyte fatty acid-binding protein induces insulin resistance in mice in vivo. *Obesity (Silver Spring)* 23(5):1007–1013. <https://doi.org/10.1002/oby.21057>
- Nakamura R, Okura T, Fujioka Y et al (2017) Serum fatty acid-binding protein 4 (FABP4) concentration is associated with insulin resistance in peripheral tissues, a clinical study. *PLoS One* 12(6):e0179737. <https://doi.org/10.1371/journal.pone.0179737>
- Gudmundsdottir V, Zaghlool SB, Emilsson V et al (2020) Circulating protein signatures and causal candidates for type 2 diabetes. *Diabetes*. <https://doi.org/10.2337/db19-1070>
- Xia Q, Chesi A, Manduchi E et al (2016) The type 2 diabetes presumed causal variant within TCF7L2 resides in an element that controls the expression of ACSL5. *Diabetologia* 59(11):2360–2368. <https://doi.org/10.1007/s00125-016-4077-2>
- Martchenko A, Oh RH, Wheeler SE, Gurses P, Chalmers JA, Brubaker PL (2018) Suppression of circadian secretion of glucagon-like peptide-1 by the saturated fatty acid, palmitate.



- Acta Physiol (Oxford) 222(4):e13007. <https://doi.org/10.1111/apha.13007>
35. Vasu S, Moffett RC, McClenaghan NH, Flatt PR (2015) Differential molecular and cellular responses of GLP-1 secreting L-cells and pancreatic alpha cells to glucotoxicity and lipotoxicity. *Exp Cell Res* 336(1):100–108. <https://doi.org/10.1016/j.yexcr.2015.05.022>
36. Hayashi H, Yamada R, Das SS et al (2014) Glucagon-like peptide-1 production in the GLUTag cell line is impaired by free fatty acids via endoplasmic reticulum stress. *Metabolism* 63(6):800–811. <https://doi.org/10.1016/j.metabol.2014.02.012>
37. Christensen LW, Kuhre RE, Janus C, Svendsen B, Holst JJ (2015) Vascular, but not luminal, activation of FFAR1 (GPR40) stimulates GLP-1 secretion from isolated perfused rat small intestine. *Physiol Rep* 3(9):e12551. <https://doi.org/10.14814/phy2.12551>
38. Tolhurst G, Heffron H, Lam YS et al (2012) Short-chain fatty acids stimulate glucagon-like peptide-1 secretion via the G-protein-coupled receptor FFAR2. *Diabetes* 61(2):364–371. <https://doi.org/10.2337/db11-1019>
39. Jaghutriz BA, Heni M, Lutz SZ et al (2019) Gene × gene interactions highlight the role of incretin resistance for insulin secretion. *Front Endocrinol (Lausanne)* 10:72. <https://doi.org/10.3389/fendo.2019.00072>
40. Schafer SA, Tschritter O, Machicao F et al (2007) Impaired glucagon-like peptide-1-induced insulin secretion in carriers of transcription factor 7-like 2 (TCF7L2) gene polymorphisms. *Diabetologia* 50(12):2443–2450. <https://doi.org/10.1007/s00125-007-0753-6>
41. da Silva Xavier G, Mondragon A, Mourougavelou V et al (2017) Pancreatic alpha cell-selective deletion of Tcf7l2 impairs glucagon secretion and counter-regulatory responses to hypoglycaemia in mice. *Diabetologia* 60(6):1043–1050. <https://doi.org/10.1007/s00125-017-4242-2>
42. Elbein SC, Chu WS, Das SK et al (2007) Transcription factor 7-like 2 polymorphisms and type 2 diabetes, glucose homeostasis traits and gene expression in US participants of European and African descent. *Diabetologia* 50(8):1621–1630. <https://doi.org/10.1007/s00125-007-0717-x>
43. Mondal AK, Das SK, Baldini G et al (2010) Genotype and tissue-specific effects on alternative splicing of the transcription factor 7-like 2 gene in humans. *J Clin Endocrinol Metab* 95(3):1450–1457. <https://doi.org/10.1210/jc.2009-2064>
44. Prokunina-Olsson L, Welch C, Hansson O et al (2009) Tissue-specific alternative splicing of TCF7L2. *Hum Mol Genet* 18(20):3795–3804. <https://doi.org/10.1093/hmg/ddp321>
45. Ahlqvist E, Storm P, Karajamaki A et al (2018) Novel subgroups of adult-onset diabetes and their association with outcomes: a data-driven cluster analysis of six variables. *Lancet Diabetes Endocrinol* 6(5):361–369. [https://doi.org/10.1016/S2213-8587\(18\)30051-2](https://doi.org/10.1016/S2213-8587(18)30051-2)
46. Udler MS, Kim J, von Grotthuss M et al (2018) Type 2 diabetes genetic loci informed by multi-trait associations point to disease mechanisms and subtypes: a soft clustering analysis. *PLoS Med* 15(9):e1002654. <https://doi.org/10.1371/journal.pmed.1002654>
47. Mahajan A, Taliun D, Thurner M et al (2018) Fine-mapping type 2 diabetes loci to single-variant resolution using high-density imputation and islet-specific epigenome maps. *Nat Genet* 50(11):1505–1513. <https://doi.org/10.1038/s41588-018-0241-6>
48. Kaminska D, Kuulasmaa T, Venesmaa S et al (2012) Adipose tissue TCF7L2 splicing is regulated by weight loss and associates with glucose and fatty acid metabolism. *Diabetes* 61(11):2807–2813. <https://doi.org/10.2337/db12-0239>
49. Huertas-Vazquez A, Plaisier C, Weissglas-Volkov D et al (2008) TCF7L2 is associated with high serum triacylglycerol and differentially expressed in adipose tissue in families with familial combined hyperlipidaemia. *Diabetologia* 51(1):62–69. <https://doi.org/10.1007/s00125-007-0850-6>
50. Consortium GT (2013) The Genotype-Tissue Expression (GTEx) project. *Nat Genet* 45(6):580–585. <https://doi.org/10.1038/ng.2653>

**Publisher's note** Springer Nature remains neutral with regard to jurisdictional claims in published maps and institutional affiliations.