

## Atrial resting membrane potential confers sodium current sensitivity to propafenone, flecainide and dronedarone

Holmes, Andrew P.; Saxena, Priyanka; Kabir, S. Nashitha; O'Shea, Christopher; Kuhlmann, Stefan M; Gupta, Suranjana; Fobian, Dannie; Apicella, Clara; O'Reilly, Molly; Syeda, Fahima; Reyat, Jasmeet S; Smith, Godfrey L; Workman, Antony J; Pavlovic, Davor; Fabritz, Larissa; Kirchhof, Paulus

DOI:

[10.1016/j.hrthm.2021.03.016](https://doi.org/10.1016/j.hrthm.2021.03.016)

License:

Creative Commons: Attribution (CC BY)

*Document Version*

Publisher's PDF, also known as Version of record

*Citation for published version (Harvard):*

Holmes, AP, Saxena, P, Kabir, SN, O'Shea, C, Kuhlmann, SM, Gupta, S, Fobian, D, Apicella, C, O'Reilly, M, Syeda, F, Reyat, JS, Smith, GL, Workman, AJ, Pavlovic, D, Fabritz, L & Kirchhof, P 2021, 'Atrial resting membrane potential confers sodium current sensitivity to propafenone, flecainide and dronedarone', *Heart Rhythm*, vol. 18, no. 7, pp. 1212-1220. <https://doi.org/10.1016/j.hrthm.2021.03.016>

[Link to publication on Research at Birmingham portal](#)

### General rights

Unless a licence is specified above, all rights (including copyright and moral rights) in this document are retained by the authors and/or the copyright holders. The express permission of the copyright holder must be obtained for any use of this material other than for purposes permitted by law.

- Users may freely distribute the URL that is used to identify this publication.
- Users may download and/or print one copy of the publication from the University of Birmingham research portal for the purpose of private study or non-commercial research.
- User may use extracts from the document in line with the concept of 'fair dealing' under the Copyright, Designs and Patents Act 1988 (?)
- Users may not further distribute the material nor use it for the purposes of commercial gain.

Where a licence is displayed above, please note the terms and conditions of the licence govern your use of this document.

When citing, please reference the published version.

### Take down policy

While the University of Birmingham exercises care and attention in making items available there are rare occasions when an item has been uploaded in error or has been deemed to be commercially or otherwise sensitive.

If you believe that this is the case for this document, please contact [UBIRA@lists.bham.ac.uk](mailto:UBIRA@lists.bham.ac.uk) providing details and we will remove access to the work immediately and investigate.

# Atrial resting membrane potential confers sodium current sensitivity to propafenone, flecainide and dronedarone



Andrew P. Holmes, PhD,<sup>\*,†</sup> Priyanka Saxena, PhD,<sup>‡</sup> S. Nashitha Kabir, MSc,<sup>\*</sup> Christopher O'Shea, PhD,<sup>\*</sup> Stefan M. Kuhlmann, MD,<sup>\*,§</sup> Suranjana Gupta, PhD,<sup>†,¶</sup> Dannie Fobian, PhD,<sup>\*</sup> Clara Apicella, MSc,<sup>\*,||</sup> Molly O'Reilly, PhD,<sup>\*</sup> Fahima Syeda, PhD,<sup>\*</sup> Jasmeet S. Reyat, PhD,<sup>\*</sup> Godfrey L. Smith, PhD,<sup>‡</sup> Antony J. Workman, PhD,<sup>‡</sup> Davor Pavlovic, DPhil,<sup>\*</sup> Larissa Fabritz, MD,<sup>\*\*\*</sup> Paulus Kirchhof, MD<sup>\*,††‡‡</sup>

From the <sup>\*</sup>Institute of Cardiovascular Sciences, University of Birmingham, Birmingham, United Kingdom, <sup>†</sup>Institute of Clinical Sciences, University of Birmingham, Birmingham, United Kingdom, <sup>‡</sup>Institute of Cardiovascular & Medical Sciences, University of Glasgow, Glasgow, United Kingdom, <sup>§</sup>Department of Cardiology, Charité-Universitätsmedizin, Berlin, Germany, <sup>¶</sup>Computational Neurophysiology Lab, Indian Institute of Technology (IIT) Bombay, Mumbai, India, <sup>||</sup>Equipe Gametes to Birth, Institut Cochin, U1016 INSERM, Paris, France, <sup>\*\*</sup>Department of Cardiology, University Hospital Birmingham, Birmingham, United Kingdom, <sup>††</sup>University Heart and Vascular Center, UKE Hamburg, Hamburg, Germany, and <sup>‡‡</sup>German Center for Cardiovascular Research (DZHK), partner site Hamburg/Kiel/Lübeck, Hamburg, Germany.

**BACKGROUND** Although atrial fibrillation ablation is increasingly used for rhythm control therapy, antiarrhythmic drugs (AADs) are commonly used, either alone or in combination with ablation. The effectiveness of AADs is highly variable. Previous work from our group suggests that alterations in atrial resting membrane potential (RMP) induced by low *Pitx2* expression could explain the variable effect of flecainide.

**OBJECTIVE** The purpose of this study was to assess whether alterations in atrial/cardiac RMP modify the effectiveness of multiple clinically used AADs.

**METHODS** The sodium channel blocking effects of propafenone (300 nM, 1  $\mu$ M), flecainide (1  $\mu$ M), and dronedarone (5  $\mu$ M, 10  $\mu$ M) were measured in human stem cell-derived cardiac myocytes, HEK293 expressing human  $\text{Na}_v1.5$ , primary murine atrial cardiac myocytes, and murine hearts with reduced *Pitx2c*.

**RESULTS** A more positive atrial RMP delayed  $\text{I}_{\text{Na}}$  recovery, slowed channel inactivation, and decreased peak action potential (AP) upstroke velocity. All 3 AADs displayed enhanced sodium channel block at more positive atrial RMPs. Dronedarone was the most sensitive to changes in atrial RMP. Dronedarone caused greater reductions in AP amplitude and peak AP upstroke velocity at more positive RMPs. Dronedarone evoked greater prolongation of the atrial effective refractory period and postrepolarization refractoriness in murine Langendorff-perfused *Pitx2c*<sup>+/-</sup> hearts, which have a more positive RMP compared to wild type.

**CONCLUSION** Atrial RMP modifies the effectiveness of several clinically used AADs. Dronedarone is more sensitive to changes in atrial RMP than flecainide or propafenone. Identifying and modifying atrial RMP may offer a novel approach to enhancing the effectiveness of AADs or personalizing AAD selection.

**Funding sources:** This work was supported by a Medical Research Council Confidence in Concept Award to Dr Holmes, Professor Kirchhof, and Dr Syeda; the European Union (Grant Agreement No. 633196 [CATCH ME]) to Professors Kirchhof and Fabritz; the British Heart Foundation (PG/17/30/32961 to Professor Kirchhof and Dr Holmes; FS/13/43/30324 and AA/18/2/34218 to Professors Kirchhof and Fabritz; PG/20/22/35093 to Professor Kirchhof; PG/17/55/33087, RG/17/15/33106, FS/19/12/34204, and FS/19/16/34169 to Dr Pavlovic; PG/16/42/32142 to Dr Workman and Professor Smith); a Wellcome Trust Seed Award Grant (109604/Z/15/Z) to Dr Pavlovic; the German Centre for Cardiovascular Research supported by the German Ministry of Education and Research (DZHK) via a grant to AFNET to Professor Kirchhof; the Leducq Foundation to Professor Kirchhof; and the University of Birmingham India Institute Fellowship scheme to Dr Gupta. The Genotype-Tissue Expression (GTEx) Project was supported by the Common Fund of the Office of the Director, NIH and NCI, NHGRI, NHLBI, NIDA, NIMH, and NINDS. **Disclosures:** Professor Kirchhof receives support from several drug and device companies active in atrial fibrillation; and has received honoraria from several such companies but independent of the current work. Professor Fabritz has received institutional research grants and nonfinancial support from European Union, British Heart Foundation, Medical Research Council (UK), and several biomedical companies. Professors Kirchhof, Fabritz, and Dr Syeda are listed as inventors on 2 patents held by the University of Birmingham (WO 2015140571, WO 2016012783). All other authors have reported that they have no relationships relevant to the contents of this paper to disclose. **Address reprint requests and correspondence:** Dr Andrew P. Holmes, The Medical School, Institute of Clinical Sciences, University of Birmingham, Vincent Drive, Birmingham, B15 2TT, United Kingdom. E-mail address: [a.p.holmes@bham.ac.uk](mailto:a.p.holmes@bham.ac.uk).

**KEYWORDS** Atrial action potential; Atrial fibrillation; Dronedaron; Flecainide; PITX2; Propafenone; Resting membrane potential

(Heart Rhythm 2021;18:1212–1220) © 2021 Heart Rhythm Society. This is an open access article under the CC BY license (<http://creativecommons.org/licenses/by/4.0/>).

## Introduction

Rhythm control therapy is used in 10%–20% of patients with atrial fibrillation (AF) to improve AF-related symptoms, often involving antiarrhythmic drugs (AADs) as first-line therapy<sup>1</sup> or in combination with AF ablation.<sup>2</sup> Although anticoagulation now prevents most ischemic strokes in AF patients, the rates of stroke, heart failure, unplanned hospitalizations, and cardiovascular death remain high.<sup>1,3</sup> Data suggest that restoring and maintaining sinus rhythm in patients with recently diagnosed AF provides clinical benefit compared to symptom-directed, selective rhythm control therapy.<sup>4</sup> This clinical benefit was achieved using a treatment strategy comprising AADs and AF ablation.<sup>4</sup> These results enhance the need for widely accessible and effective rhythm control therapy.

AADs are readily available in many cardiovascular care settings,<sup>5</sup> but their effectiveness is variable.<sup>1</sup> Predicting efficacy remains an unresolved clinical challenge,<sup>1,3</sup> and practice patterns suggest that local protocols rather than patient factors determine AAD selection.<sup>5</sup> Methods supporting the selection of effective AAD therapy could improve delivery of accessible rhythm control therapy in patients with AF.<sup>6</sup>

An important factor in determining AAD effectiveness likely is the underlying atrial electrical dysfunction,<sup>6</sup> including a more positive atrial resting membrane potential (RMP).<sup>7</sup> A shift in RMP directly modifies the efficacy of the sodium channel blocker flecainide in murine atria.<sup>7</sup> Whether this effect is evident in humanized cardiac cell models has not been tested. The effect of a more positive RMP on other AADs with sodium channel blocking capabilities has not been assessed in atrial cardiac myocytes or humanized cardiac cell models. The aim of this study was to quantify and compare the impact of different RMPs on the sodium channel blocking efficacy of propafenone, flecainide, and dronedarone in human cardiac cell models, primary murine atrial cells, and clinically relevant genetic animal models.

## Methods

Details of the methods are given in the [Supplemental Methods](#).

## Ethics and approval

Procedures and experiments involving human atrial cells were approved by the West of Scotland Research Ethics Service (REC 17/WS/0134). The human research reported in this article adhered to the Helsinki Declaration. All animal procedures were performed in accordance with UK Animals (Scientific Procedures) Act 1986 and were approved by the UK Home Office (PFDAAF77F). Animal research reported in this article adhered to the ARRIVE and Guide for the Care and Use of Laboratory Animals guidelines. Hearts were isolated from wild-type (WT) and *Pitx2c*<sup>+/-</sup> male and female adult mice (N = 77) bred on a MF1 background, by thoracotomy under deep terminal isoflurane anesthesia (4%–5% isoflurane in O<sub>2</sub>, 1.5 L/min).

## Recordings of sodium currents and action potentials in human Na<sub>v</sub>1.5/SCN1B-expressing HEK293 cells and human-induced pluripotent stem cell-derived cardiac myocytes

For sodium currents (I<sub>Na</sub>), whole-cell patch-clamp recordings were obtained as described previously.<sup>7,8</sup> I<sub>Na</sub> was elicited in 100-ms steps to −30 mV from holding potentials of −100 to −70 mV. Currents were measured before and after propafenone (300 nM or 1 μM; Sigma-Aldrich, Gillingham, UK), dronedarone (5 and 10 μM; Sigma-Aldrich, Gillingham, UK), and flecainide (1 μM; Sigma-Aldrich, Gillingham, UK). These concentrations are consistent with those previously reported in the literature.<sup>7,9,10</sup> Cells were paced at 1 Hz while the drugs were introduced to the perfusate.

Action potentials (APs) were recorded at 36°–37°C in the whole-cell current-clamp configuration and triggered by 2-ms current injections (1.5 nA). AP trains were stimulated at 1 Hz. APs were recorded at RMPs from −90 to −65 mV by varying the background current injection. Action potential amplitude (APA) and peak AP phase 0 upstroke velocity (dV·dt<sup>-1</sup>) were analyzed using modified algorithms from ElectroMap.<sup>11</sup>

## Recordings of human atrial APs

Right atrial tissue samples were obtained from 6 adult patients undergoing cardiac surgery ([Supplemental Table 1](#)). Cardiomyocytes were enzymatically isolated from this tissue using the “chunk” method.<sup>12</sup> APs were stimulated and recorded at 35°–37°C by whole-cell patch clamp, using an AxoClamp 2B amplifier (Axon Instruments, Foster City, CA, USA) and WinWCP or WinEDR software (J Dempster, Strathclyde Institute of Pharmacy & Biomedical Sciences, University of Strathclyde, Glasgow, UK).

## Cell isolation and recordings of sodium currents in primary murine left atrial cardiac myocytes

Hearts were isolated from WT and *Pitx2c*<sup>+/-</sup> mice and digested using a Langendorff apparatus as described previously.<sup>13</sup> Peak I<sub>Na</sub> was recorded as described for human-induced pluripotent stem cell-derived cardiac myocytes (hiPSC-CMs) and HEK293 cells, except that a low sodium external solution was used.

## Recordings of murine left atrial transmembrane APs

Transmembrane APs were recorded at 37°C from the epicardial surface of WT and *Pitx2c*<sup>+/-</sup> left atrium (LA) using custom-made glass microelectrodes containing 3 M KCl (resistance 15–20 MΩ) as described previously.<sup>13,14</sup>

## Recordings of murine LA monophasic APs

LA monophasic APs were recorded at 37°C from Langendorff-perfused beating hearts isolated from WT and *Pitx2c*<sup>+/-</sup> mice as described previously.<sup>7</sup> Monophasic APs

were recorded over a range of 120-, 100-, and 800-ms cycle lengths. Programmed stimulation was performed at baseline and with dronedarone (10  $\mu$ M).

## Data analysis

Values are given as mean  $\pm$  SEM. Single cell/heart/patient measurements are shown as individual points. Statistical analysis was performed using 1-way repeated measures analysis of variance, 2-way analysis of variance with Bonferroni *post hoc* analysis, or a paired/unpaired 2-tailed Student *t* test (Prism8, GraphPad, San Diego, CA).  $P < .05$  was considered significant.

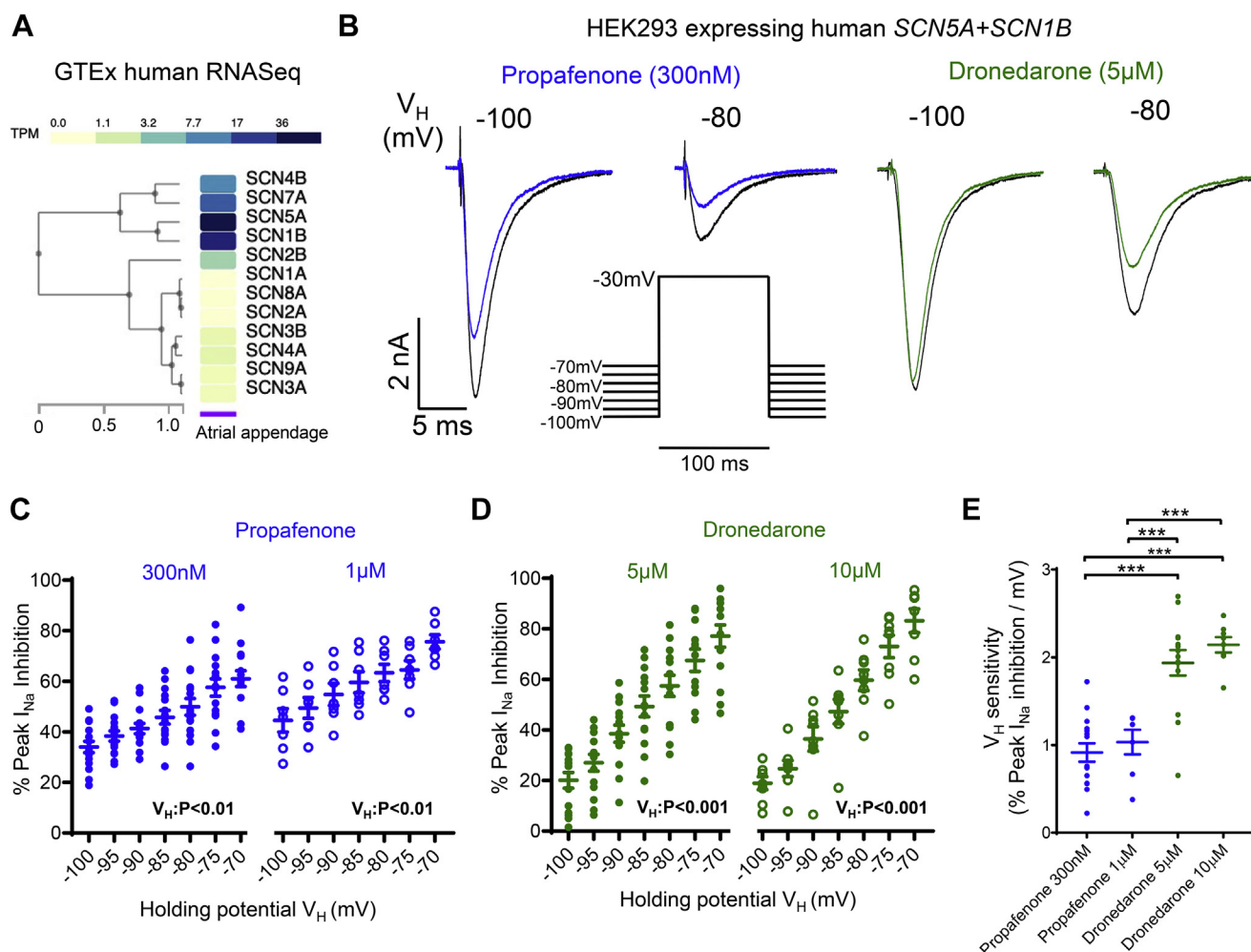
## Results

### Propafenone and dronedarone inhibit $\text{Na}_v1.5$ currents more effectively at more positive RMPs

Analysis of the Genotype-Tissue Expression (GTEx) database identified *SCN5A* and *SCN1B* as the most highly expressed alpha- and beta-subunits respectively in human atria (Figure 1A). Therefore, the effects of dronedarone and

propafenone were assessed in HEK293 cells stably expressing *SCN5A* and *SCN1B*. For propafenone and dronedarone, peak  $I_{\text{Na}}$  inhibition progressively increased at more positive RMP/ $V_{\text{H}}$  (Figure 1B–1D). This was consistent at both concentrations tested for each AAD (Figure 1C and 1D). Comparison between agents showed that dronedarone has an almost 2-fold greater sensitivity (percent inhibition per mV increase in RMP/ $V_{\text{H}}$ ) to RMP/ $V_{\text{H}}$  than propafenone ( $P < .01$ ) (Figure 1E). For both agents, RMP/ $V_{\text{H}}$  sensitivity was not modified by concentration (Figure 1E).

A more positive RMP/ $V_{\text{H}}$  decreased the peak  $I_{\text{Na}}$  activation time constant, an effect that was not further modified by propafenone or dronedarone (Figures 2A and 2B). More positive RMP/ $V_{\text{H}}$  increased the inactivation time constant, consistent with a slower rate of current decay (Figure 2B). Additionally, a more positive RMP/ $V_{\text{H}}$  significantly slowed the time-dependent peak  $I_{\text{Na}}$  recovery rate under control conditions and in the presence of propafenone (300 nM) and dronedarone (5  $\mu$ M) (Figure 2C). Comparison of the 50% recovery times ( $P_{50}$ ) showed that neither propafenone nor dronedarone caused



**Figure 1** Human  $\text{Na}_v1.5$  sodium current ( $I_{\text{Na}}$ ) inhibition by propafenone and dronedarone is enhanced at more positive resting membrane potentials (RMPs). **A**: Genotype-Tissue Expression (GTEx) data showing relative mean expression of sodium channel genes in human atrial appendage ( $N = 429$  samples). **B**: Inhibition of  $I_{\text{Na}}$  caused by propafenone (300 nM) and dronedarone (5  $\mu$ M) at 2 different resting membrane potentials/holding potentials (RMP/ $V_{\text{H}}$ ). **C, D**: Effect of RMP/ $V_{\text{H}}$  on  $I_{\text{Na}}$  inhibition by propafenone at 300 nM ( $N = 15$  cells) and 1  $\mu$ M ( $N = 8$  cells), and dronedarone at 5  $\mu$ M ( $N = 14$  cells) and 10  $\mu$ M ( $N = 8$  cells). Data are given as mean  $\pm$  SEM, 1-way repeated measures analysis of variance (ANOVA). **E**: RMP/ $V_{\text{H}}$  sensitivities of propafenone and dronedarone. \*\*\* $P < .001$ , 2-way ANOVA with Bonferroni *post hoc* analysis.



further slowing of recovery times at any of the RMP/ $V_H$  tested (Figure 2D).

### RMP modifies human atrial AP morphology

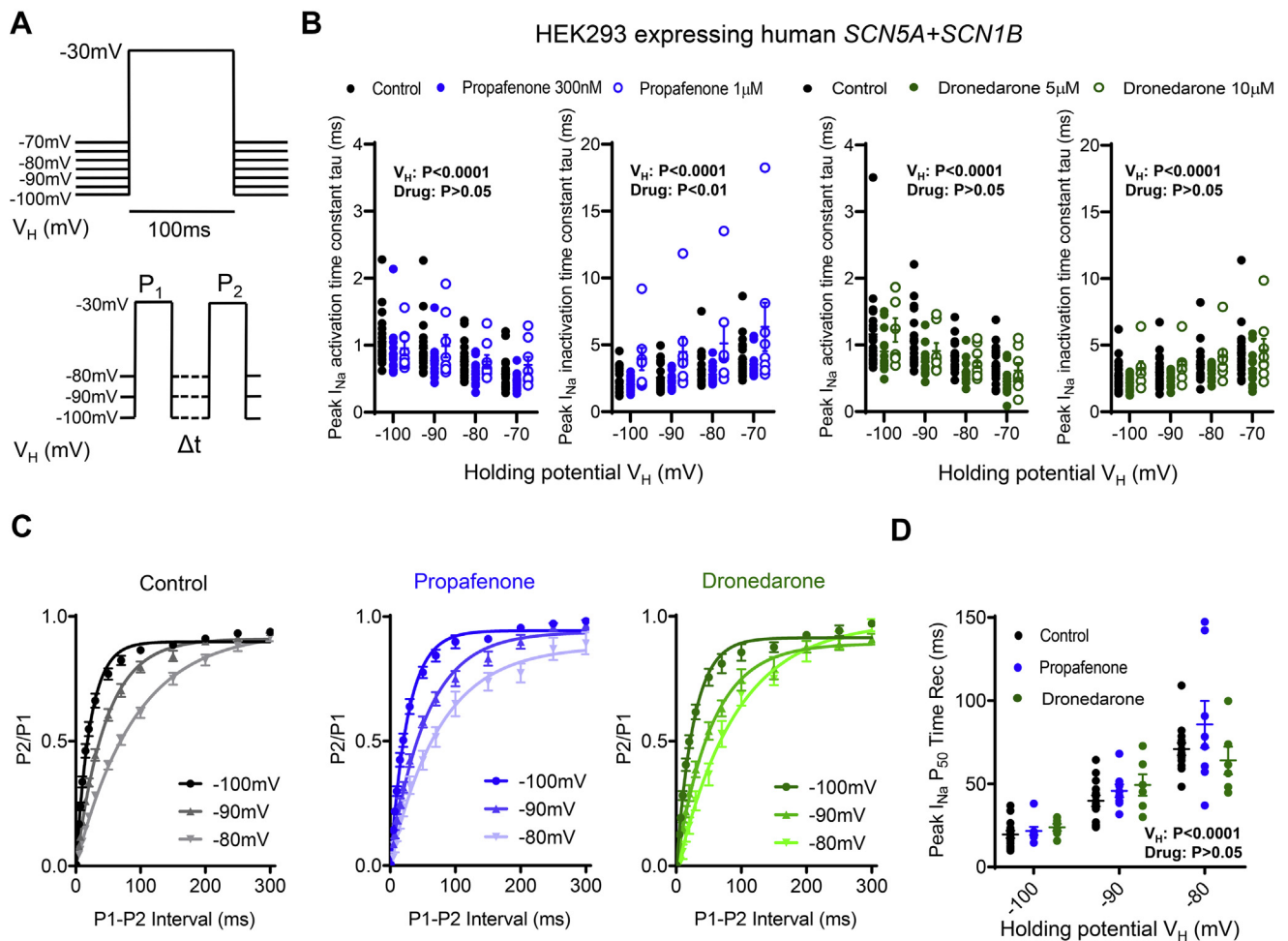
In hiPSC-CMs paced at 1 Hz, at more positive RMPs (incrementing from  $-90$  to  $-65$  mV) there was a graded reduction in both APA and peak  $dV \cdot dt^{-1}$  (Figures 3A–3C). In primary human atrial myocytes paced at 1 Hz, current-clamping of RMP in 5-mV steps from  $-85$  to  $-55$  mV evoked a marked decrease in peak  $dV \cdot dt^{-1}$ , from  $\sim 205$  V/s at RMP  $-85$  V, to  $\sim 25$  V/s at RMPs of  $-65$  mV or more positive (Figures 3D–3G). This is consistent with voltage-dependent inactivation of  $I_{Na}$  between  $-70$  and  $-60$  mV and with the corresponding decrease in APA (Figures 3D–3G).

### Dronedaron causes greater changes in AP morphology at more positive RMPs in hiPSC-CMs

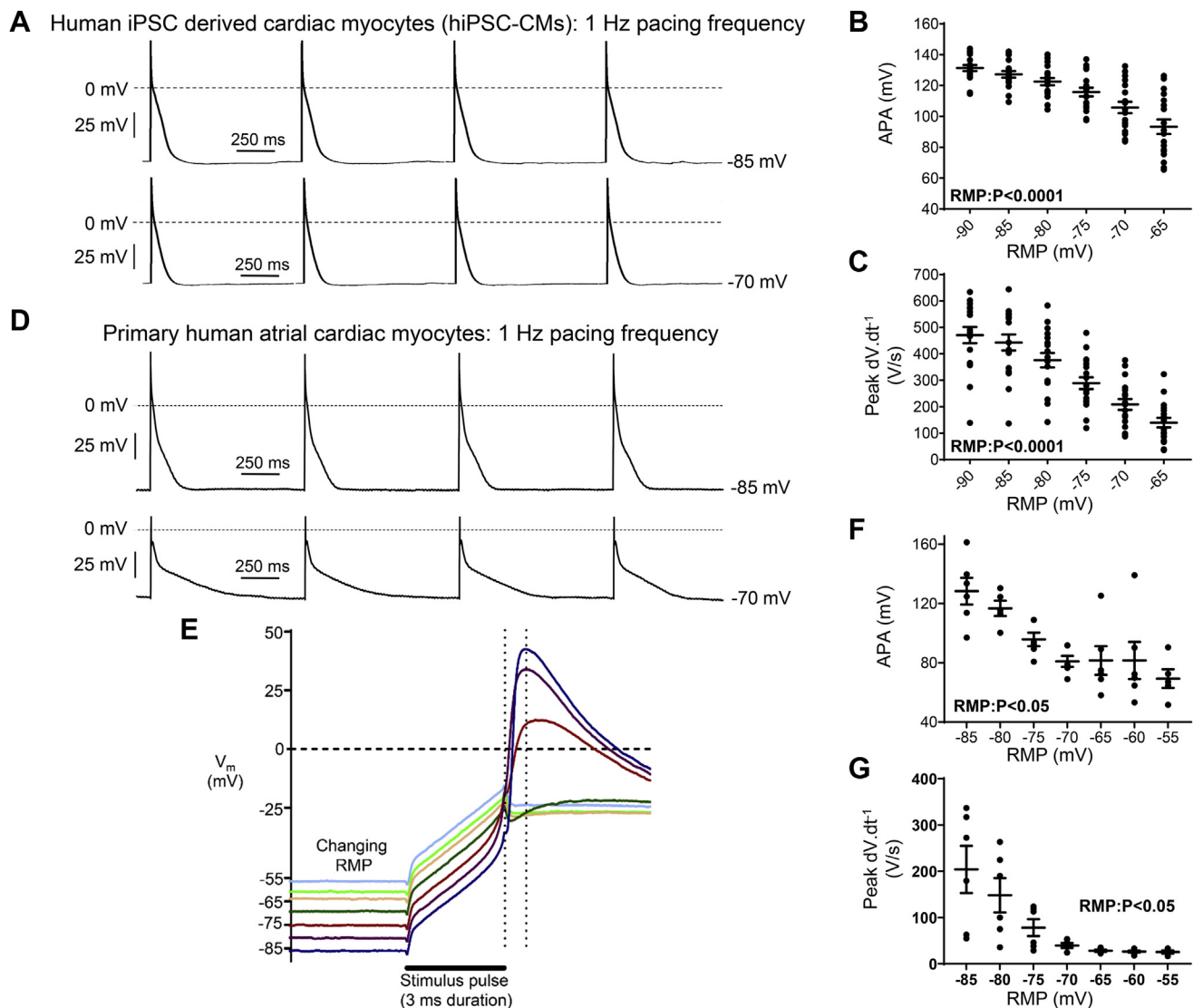
In hiPSC-CMs, control peak  $I_{Na}$  was progressively reduced as RMP/ $V_H$  became more positive (from  $-5.5 \pm 0.5$  nA

at  $-90$  mV, to  $-0.8 \pm 0.2$  nA at  $-70$  mV;  $n = 15$  cells;  $P < .001$ ). For propafenone (300 nM) and dronedarone (5  $\mu$ M),  $I_{Na}$  inhibition was enhanced at more positive RMP/ $V_H$  (Figure 4A). RMP/ $V_H$  sensitivity of propafenone ( $\sim 1\%/mV$ ) was similar to that of flecainide (1  $\mu$ M) (Figure 4B). Dronedaron inhibition of peak  $I_{Na}$  was 2-fold more sensitive to changes in RMP ( $\sim 2\%$  per mV) compared to both propafenone and flecainide (Figure 4B).

Because dronedaron showed the highest sensitivity to RMP/ $V_H$ , this agent was taken forward for functional testing on hiPSC-CMs. Dronedaron caused action potential duration (APD) prolongation in the majority of cells, consistent with its known inhibition of  $I_{Kr}$ , and a reduction in both APA and peak  $dV \cdot dt^{-1}$  (Figure 4C–4E, and Supplemental Figures 1 and 2). The magnitude of responses to dronedaron varied at different RMPs. At RMP of  $-90$  mV, dronedaron caused a minimal reduction in APA (Figure 4D, and Supplemental Figures 1 and 2). However, dronedaron caused a greater reduction in APA as RMP became progressively more positive



**Figure 2** Human  $Na_V1.5$  sodium current ( $I_{Na}$ ) activation, inactivation, and time-dependent recovery kinetics are sensitive to changes in resting membrane potential (RMP). **A**: Protocols used to measure  $I_{Na}$  activation/inactivation time kinetics (top) and time-dependent recovery (bottom). **B**: Activation and inactivation time constants (tau) measured at different resting membrane potentials/holding potentials (RMP/ $V_H$ ) for control, propafenone (300 nM and 1  $\mu$ M;  $N = 23$  cells total), and dronedaron (5  $\mu$ M and 10  $\mu$ M;  $N = 21$  cells total). One-way repeated measures analysis of variance (ANOVA). **C**:  $I_{Na}$  time-dependent recovery measured in control cells ( $N = 14$  cells), propafenone-treated cells (300 nM;  $N = 8$  cells), and dronedaron-treated (5  $\mu$ M;  $N = 6$  cells). **D**: Effect of RMP/ $V_H$  on mean 50%  $I_{Na}$  recovery times ( $P_{50}$ ) for all 3 groups. Data are given as mean  $\pm$  SEM, 2-way repeated measures ANOVA with Bonferroni *post hoc* analysis.



**Figure 3** Resting membrane potential (RMP) regulates the human atrial action potential (AP). **A**: Short trains of APs measured at two different RMPs (–85 and –70 mV) in a single human-induced pluripotent stem cell–derived cardiac myocyte (hiPSC-CM), paced at 1 Hz. **B**, **C**: Mean data from hiPSC-CMs ( $N = 18$  cells). **D**: Short trains of APs recorded at 2 RMPs (–85 and –70 mV) in a single primary human right atrial cardiac myocyte, paced at 1 Hz. **E**: Representative superimposed AP traces recorded from a single primary human right atrial myocyte, paced at 1 Hz. Vertical dashed cursors indicate the end of the stimulus and the action potential amplitude (APA), respectively. Peak  $dV/dt$  was measured between these 2 cursors to avoid the stimulus current. **F**, **G**: Mean data ( $N = 14$  cells; 6 patients). Data are given as mean  $\pm$  SEM, 1-way analysis of variance.

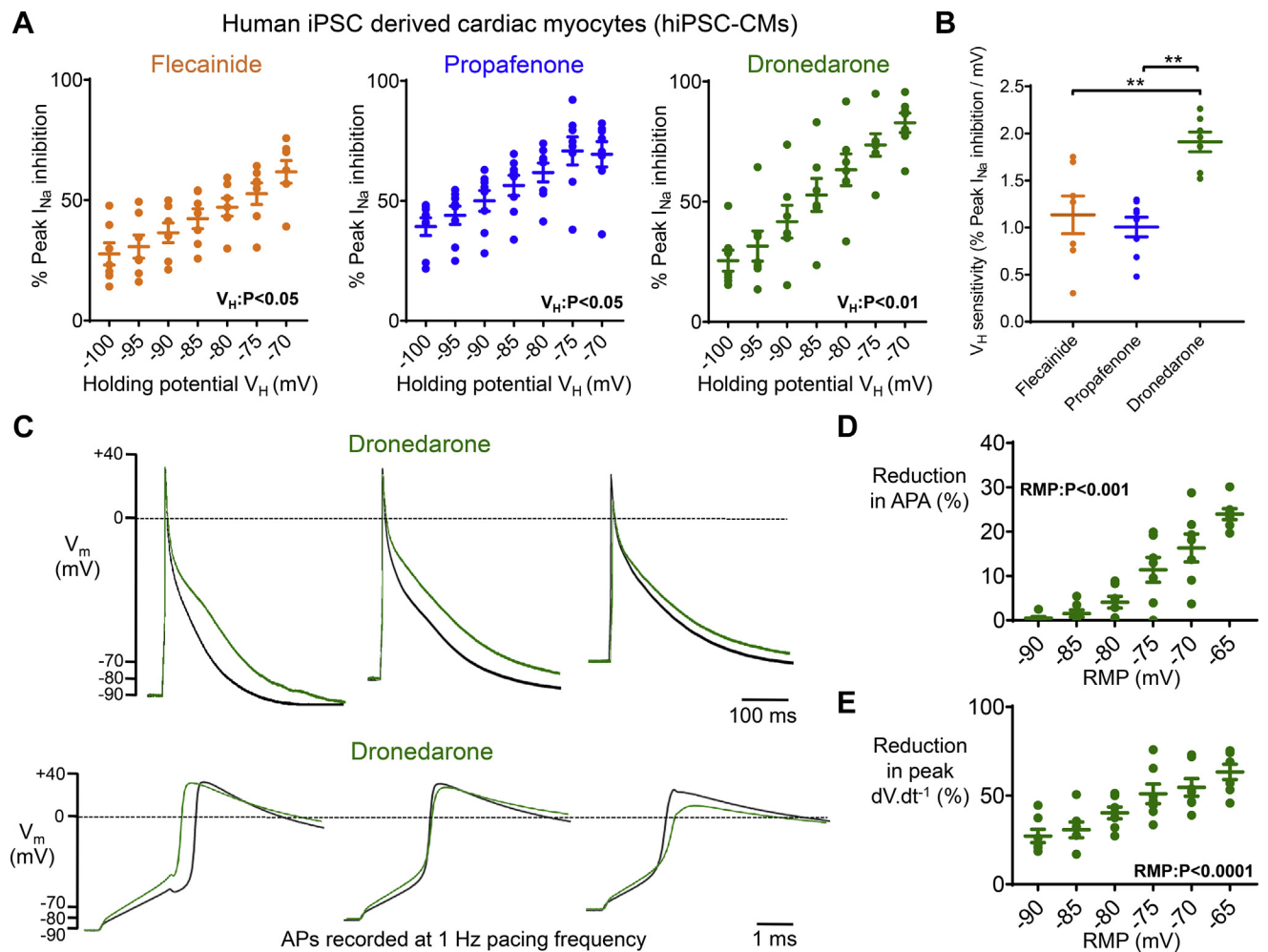
(Figure 4D, and Supplemental Figures 1 and 2). Similarly, dronedarone more effectively decreased peak  $dV/dt$  at more positive RMPs (Figure 4E).

### Dronedarone causes greater effective refractory period prolongation and postrepolarization refractoriness in atria with reduced *Pitx2c*

*Pitx2c*<sup>+/-</sup> LA cardiac myocytes had a more positive RMP and reduced APA (Supplemental Figures 3A and 3B), as expected.<sup>7</sup> Peak  $I_{Na}$  was not different between genotypes at fixed  $V_H$ /RMP (Supplemental Figure 3C). Murine LA  $I_{Na}$  inhibition by dronedarone, propafenone, and flecainide was enhanced at more positive RMP/ $V_H$  and was similar for

both genotypes at fixed  $V_H$ /RMPs (Supplemental Figures 3D and 3E).

In isolated, beating mouse hearts, dronedarone (10  $\mu$ M) caused a greater prolongation of the LA effective refractory period (ERP) in *Pitx2c*<sup>+/-</sup> than in WT littermates (Figures 5A and 5B, and Supplemental Figure 4). Dronedarone prolonged APD similarly in both genotypes, and there were no genotype-dependent differences in activation times (ATs) (Figures 5C and 5D). Postrepolarization refractoriness (PRR) (ERP-APD<sub>90</sub>) was significantly shorter at baseline in *Pitx2c*<sup>+/-</sup> LA (Figure 6A, and Supplemental Table 2). This effect was abolished after treatment with dronedarone (Figure 6B) as dronedarone caused greater prolongation of PRR in *Pitx2c*<sup>+/-</sup> LA (Figure 6 and Supplemental Table 2).



**Figure 4** Dronedaron causes greater inhibition of cardiac action potential amplitude (APA) and upstroke velocity at more positive resting membrane potentials (RMPs). **A:** Data from human-induced pluripotent stem cells–derived cardiac myocytes (hiPSC-CMs) demonstrating the effect of resting membrane potential/holding potential (RMP/ $V_H$ ) on sodium current ( $I_{Na}$ ) inhibition by flecainide (1  $\mu$ M;  $N = 7$  cells), propafenone (300 nM;  $N = 8$  cells) and dronedaron (5  $\mu$ M;  $N = 7$  cells). **B:** RMP/ $V_H$  sensitivities of flecainide, propafenone, and dronedaron.  $**P < .01$ , 1-way analysis of variance (ANOVA) with Bonferroni *post hoc* analysis. **C:** Action potentials (APs) measured at 3 different RMPs (–100, –90, and –70 mV) measured in a single hiPSC-CM  $\pm$  dronedaron (5  $\mu$ M), paced at 1 Hz. **D, E:** Mean data from hiPSC-CMs ( $N = 7$  cells). Data are given as mean  $\pm$  SEM, 1-way repeated measures ANOVA.

## Discussion

### Main findings

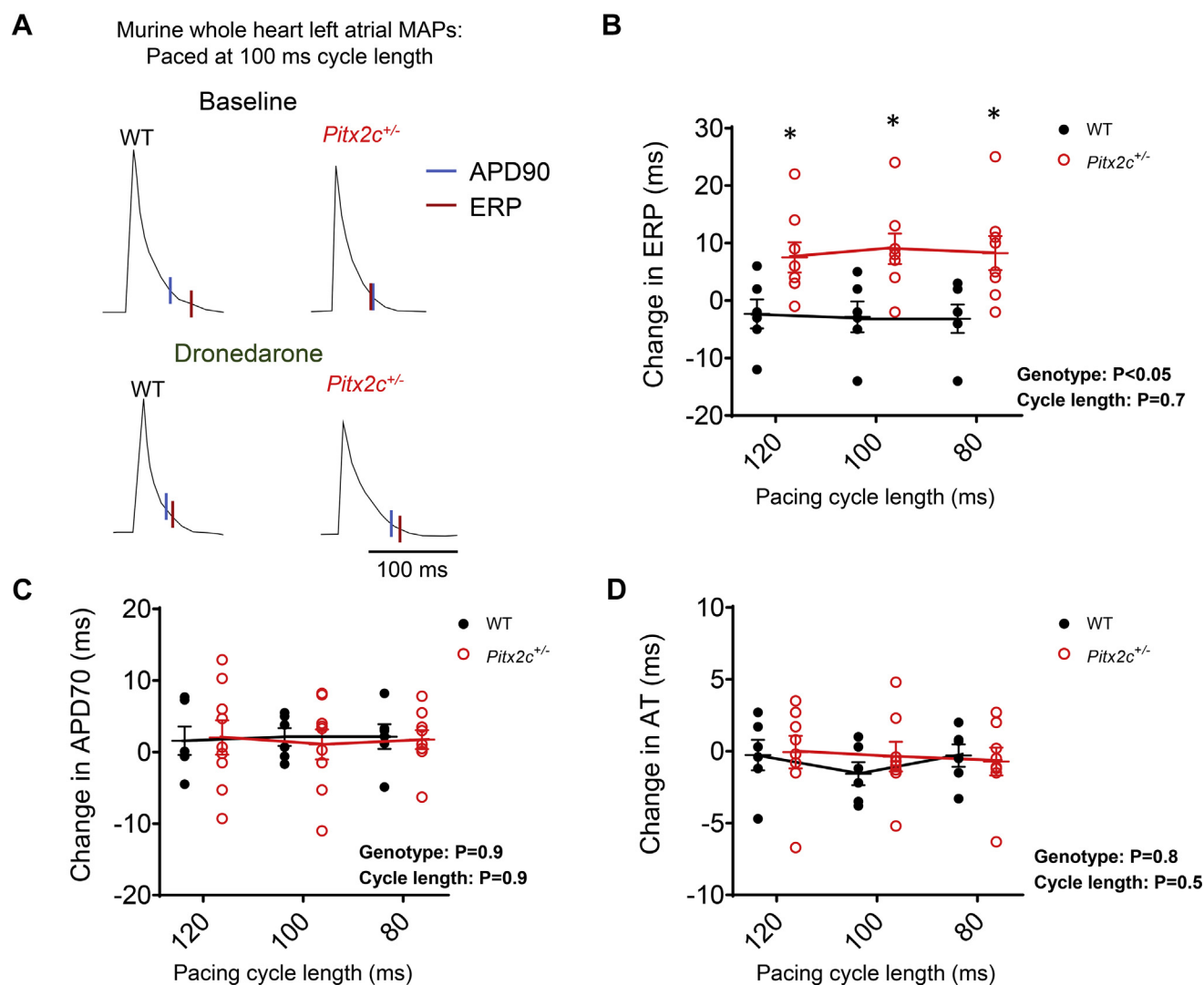
A more positive RMP increases the effectiveness of propafenone, flecainide, and dronedaron in human cardiac cell models and primary murine atrial cardiac myocytes. Dronedaron is more sensitive to RMP than propafenone or flecainide. Dronedaron-induced PRR is enhanced in atria, with a more positive RMP caused by a reduction in *Pitx2c*. Selecting dronedaron or other sodium channel blockers based on markers for a more positive RMP and/or as potential companion therapies with RMP-depolarizing agents in patients with a hyperpolarized RMP has emerged as a promising approach to improve the effectiveness of AAD therapy for AF.

### Atrial RMP modulates the effectiveness of AADs

Approximately 10%–20% of AF patients currently receive rhythm control therapy to improve symptoms.<sup>1</sup> This proportion may increase due to the clinical benefit of early rhythm

control therapy,<sup>4</sup> enhancing the need for readily available and effective rhythm control therapy. Although some patients respond well to AAD therapy, many experience early recurrences, with symptomatic AF recurrence occurring in 40%–70% of AF patients within 6–12 months.<sup>1</sup> Three of the most used AADs inhibit the cardiac sodium channel and were tested here: flecainide, propafenone, and dronedaron.

The present study demonstrated that RMP modulates the effectiveness of 3 AADs in human cardiac cell models and murine LA cells. AF has been associated with diverse changes in atrial RMP, including a more negative RMP ( $\sim$ 5–10 mV).<sup>12,15</sup> Other studies suggest an unchanged<sup>16</sup> or more positive RMP in AF,<sup>17</sup> illustrating the heterogeneous electrical changes in AF. Variations in different  $K^+$  currents, including  $I_{K1}$ ,  $I_{KACh}$ ,  $I_{KCa}$ , and  $I_{Kleak}$ ,<sup>18</sup> can explain these findings. In instances in which RMP is altered, our findings suggest that the extent of this modification may be a contributing factor to the overall efficacy of flecainide, propafenone, and dronedaron.



**Figure 5** Dronedarone causes greater effective refractory period (ERP) prolongation in murine left atria (LA) with reduced *Pitx2c* compared to wild type (WT). **A:** Monophasic action potentials (MAPs) recorded at 100-ms pacing cycle length from WT and *Pitx2c*<sup>+/-</sup> intact LA. Action potential duration at 90% repolarization (APD90; blue line) and ERP (red line) before and after dronedarone (10 μM) are indicated. **B–D:** Mean effects of dronedarone on LA ERP (**B**), action potential duration at 70% repolarization (APD70) (**C**), and activation time (AT) in WT (N = 6 hearts; 6 animals) and *Pitx2c*<sup>+/-</sup> (N = 9 hearts; 9 animals), measured at pacing cycle lengths at 120, 100, and 80 ms (**D**). Data are given as mean ± SEM. \*P < .05 WT vs *Pitx2c*<sup>+/-</sup>, 2-way analysis of variance with Bonferroni *post hoc* analysis.

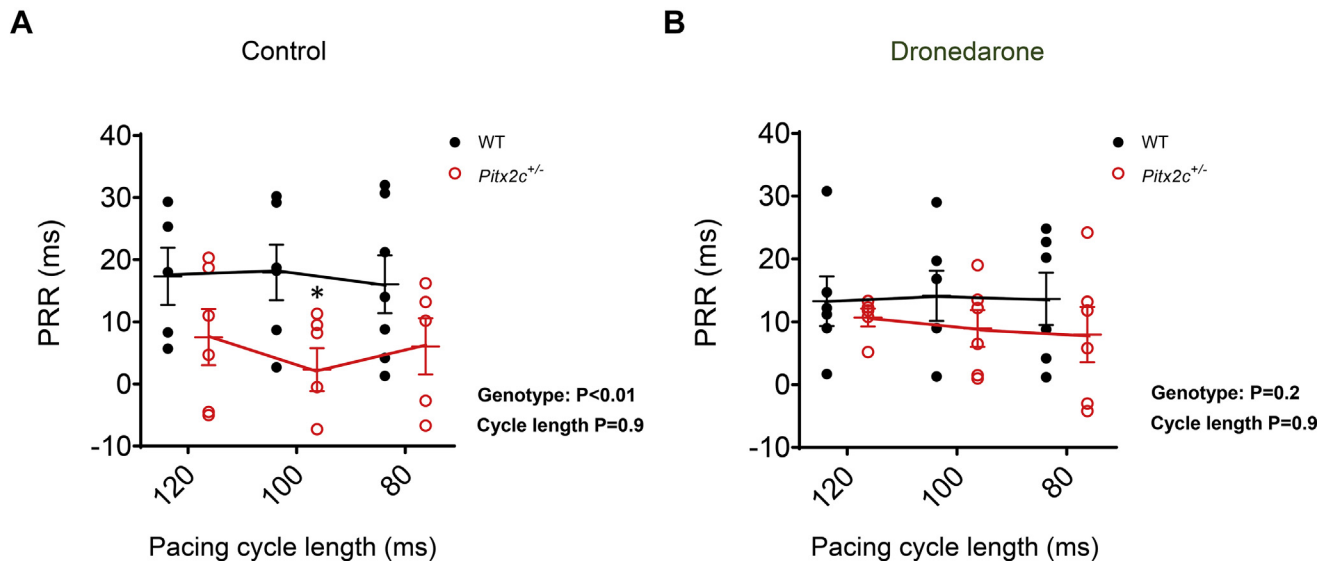
Previous studies have shown that dronedarone is more effective at blocking  $I_{Na}$  at more positive RMPs in guinea pig ventricular cardiac myocytes.<sup>9</sup> Our data show that this effect is consistent in hiPSC-CMs and murine atrial cells. One reason for the observed atrial selectivity of dronedarone likely is the more positive RMP in comparison with ventricular myocytes.<sup>9</sup> Our data also show that dronedarone is more sensitive to RMP than both propafenone and flecainide. The reduced RMP sensitivity of flecainide and propafenone in comparison to dronedarone could be a contributing factor to their apparent lack of differential atrial/ventricular selectivity.<sup>19</sup> Other biophysiological differences between atrial and ventricular myocytes may modify drug sensitivity, such as alterations in accessory subunits, ion channel localization, and posttranslational modifications. Although *Pitx2* is expressed in all chambers in the developing heart, *Pitx2* in the

adult heart is almost completely confined to the LA.<sup>20,21</sup> Although it may be tempting to speculate that the difference in RMP between LA and left ventricular cardiomyocytes is due to differential *Pitx2* expression, other mechanisms must be at play, as right atrial cardiomyocytes also have a more positive RMP compared to ventricular cardiomyocytes. Our experiments in *Pitx2*-deficient atria demonstrated that the effect of RMP on dronedarone leads to increased PRR, an important mechanism of AADs.<sup>22</sup>

### Is there a link between a more positive atrial RMP and the genomic markers for AF on chromosome 4q25?

Key single nucleotide polymorphisms on chromosome 4q25, adjacent to the *PITX2* gene, are by far the strongest genomic





**Figure 6** Dronedaronone reverses the shortening of postrepolarization refractoriness (PRR) in murine left atria with reduced *Pitx2c*. Data show PRR before (A) and after (B) dronedaronone (10  $\mu$ M) in wildtype (WT; N = 6 hearts; 6 animals) and *Pitx2c*<sup>+/-</sup> (N = 6 hearts; 6 animals), measured at pacing cycle lengths of 120, 100, and 80 ms. Data are given as mean  $\pm$  SEM. \**P* < 0.05 WT vs *Pitx2c*<sup>+/-</sup>, 2-way analysis of variance with Bonferroni *post hoc* analysis.

signal associated with AF.<sup>23</sup> *PITX2* is an important transcription factor that regulates ion channel expression and electrical integrity in the adult LA.<sup>24</sup> The single nucleotide polymorphisms lie in a region that has putative transcriptional enhancer activity of *PITX2*.<sup>25,26</sup> Risk alleles on chromosome 4q25<sup>27</sup> and reduced LA *PITX2* expression<sup>28</sup> are associated with recurrent AF on rhythm control therapy. In this study, we demonstrated that murine cardiac myocytes with low *Pitx2c* mRNA expression have a more positive RMP, consistent with previous reports,<sup>7,24</sup> suggesting one potential mechanism for this clinical effect. Dronedaronone caused greater ERP prolongation in *Pitx2c*<sup>+/-</sup> atria than in WT, leading to enhanced atrial PRR. However, dronedaronone did not cause greater APD elongation in either genotype. Therefore, we do not believe that the exaggerated increase of ERP in *Pitx2c*<sup>+/-</sup> deficient atria is due to excessive lengthening of the APD but instead is dependent on an enhanced level of sodium channel block. This is consistent with observations from our human and animal cell experiments in which sodium channel block was elevated at more positive RMPs. It also demonstrates that small fluctuations in RMP can have important functional effects on AAD efficacy. It has been reported that flecainide extends the ERP more in *Pitx2c*<sup>+/-</sup> hearts compared to WT, whereas sotalol has no genotype-dependent effects.<sup>7</sup> Collectively, these data suggest that both dronedaronone and flecainide may provide effective treatment in atria with reduced *PITX2*. To extend these findings, a key next step will be to determine whether human atrial cells with reduced *PITX2* have a more positive RMP and whether they respond well to flecainide and/or dronedaronone.

### Clinical perspective

Currently no clinically accessible marker identifies patients with a depolarized atrial RMP, although elevated bone

morphogenic protein 10 has recently been suggested as a blood biomarker for reduced LA *PITX2*.<sup>28</sup> Drugs that depolarize atrial RMP could be combined with sodium channel blockers such as dronedaronone to enhance their effectiveness. More research is required to better understand how RMP is altered by different genetic or environmental causes of AF, and clinical markers identifying patients with a depolarized atrial RMP are needed to develop and test such therapeutic concepts.

### Study limitations

This study utilized murine atrial cardiac myocytes, hiPSC-CMs, and HEK293 expressing human cardiac sodium channels. We also provided validation in perfused beating murine atria (Figures 5 and 6). However, we did not perform differentiation protocols to generate atrial-specific hiPSC-CMs. Validation of the impact of atrial RMP on AAD sensitivities and electrical function specifically in primary human atrial tissue is still warranted. There are some limitations with using hiPSC-CMs due to their relatively immature status.<sup>29</sup> However, the study findings showed consistency with both primary murine atrial cardiac myocytes and HEK293 cells expressing human cardiac *Scn5a*. Whether atrial RMP is stable over time and/or whether regional variability in the RMP affect atrial function and recurrent AF should be studied in future projects. Although enhanced PRR and suppression of automatic activity are valid surrogates for AAD action, this study could not test whether RMP had an effect on spontaneous or inducible AF. This needs to be addressed in future studies, ideally investigating patients and using clinical markers for patients with a more positive atrial RMP. The range of drug concentrations used in this study are consistent with values reported in previous experimental literature,<sup>7,9,10</sup> are within the range reported to inhibit *I*<sub>Na</sub>, and are either within or close to the reported therapeutic plasma

concentrations. As exact intra-atrial concentrations have not been reported, we cannot say for certain that the concentrations used in this study precisely mimic those present *in vivo* at the level of a single atrial cardiac myocyte.

## Conclusion

Dronedaron, propafenone, and flecainide all are sensitive to changes in atrial RMP, promoting greater peak  $I_{Na}$  inhibition at more positive RMP. Dronedaron is most sensitive to variations in RMP. In human cardiac cell models, dronedaron reduces APA and peak  $dV \cdot dt^{-1}$  to a greater extent at more positive RMPs. Dronedaron causes greater prolongation of ERP and PRR in *Pitx2c*<sup>+/-</sup> atria that have a more positive RMP compared to WT. Therefore, RMP is an important modulator of the  $I_{Na}$  inhibiting effect of different clinically used AADs. Targeting RMP to increase the effectiveness of AADs or selecting AADs based on specific RMP alterations in different types of AF provide novel approaches for improving patient outcomes.

## Acknowledgments

The authors thank the Golden Jubilee National Hospital cardiothoracic surgical teams, research nurses, and administrative staff; patients for providing human atrial tissues; and University of Glasgow technicians for isolating cardiomyocytes and providing technical support. The data for the analyses were obtained from the GTEx Portal at <https://www.gtexportal.org/home/> on June 27, 2020. The graphical abstract was created in BioRender available at [biorender.com](https://biorender.com).

## Appendix

### Supplementary data

Supplementary data associated with this article can be found in the online version at <https://doi.org/10.1016/j.hrthm.2021.03.016>.

## References

- Kirchhof P, Benussi S, Kotecha D, et al. 2016 ESC Guidelines for the management of atrial fibrillation developed in collaboration with EACTS. *Eur Heart J* 2016;37:2893–2962.
- Duytschaever M, Demolder A, Philips T, et al. Pulmonary vein isolation With vs. without continued antiarrhythmic Drug treatment in subjects with Recurrent Atrial Fibrillation (POWDER AF): results from a multicentre randomized trial. *Eur Heart J* 2018;39:1429–1437.
- Kloosterman M, Chua W, Fabritz L, et al. Sex differences in catheter ablation of atrial fibrillation: results from AXAFA-AFNET 5. *EP Europace* 2020;22:1026–1035.
- Kirchhof P, Camm AJ, Goette A, et al. Early rhythm-control therapy in patients with atrial fibrillation. *N Engl J Med* 2020;383:1305–1316.
- Glorioso TJ, Grunwald GK, Ho PM, Maddox TM. Reference effect measures for quantifying, comparing and visualizing variation from random and fixed effects in non-normal multilevel models, with applications to site variation in medical procedure use and outcomes. *BMC Med Res Methodol* 2018;18:74.
- Fabritz L, Guasch E, Antoniadou C, et al. Defining the major health modifiers causing atrial fibrillation: a roadmap to underpin personalized prevention and treatment. *Nat Rev Cardiol* 2016;13:230–237.
- Syeda F, Holmes AP, Yu TY, et al. PITX2 modulates atrial membrane potential and the antiarrhythmic effects of sodium-channel blockers. *J Am Coll Cardiol* 2016;68:1881–1894.
- Ackers-Johnson M, Li PY, Holmes AP, O'Brien SM, Pavlovic D, Foo RS. A simplified, Langendorff-free method for concomitant isolation of viable cardiac myocytes and nonmyocytes from the adult mouse heart. *Circ Res* 2016;119:909–920.
- Bogdan R, Goegelein H, Ruetten H. Effect of dronedaron on Na<sup>+</sup>, Ca<sup>2+</sup> and HCN channels. *Naunyn Schmiedeberg Arch Pharmacol* 2011;383:347–356.
- Burashnikov A, Belardinelli L, Antzelevitch C. Atrial-selective sodium channel block strategy to suppress atrial fibrillation: ranolazine versus propafenone. *J Pharmacol Exp Ther* 2012;340:161–168.
- O'Shea C, Holmes AP, Yu TY, et al. ElectroMap: high-throughput open-source software for analysis and mapping of cardiac electrophysiology. *Sci Rep* 2019;9:1389.
- Workman AJ, Kane KA, Rankin AC. The contribution of ionic currents to changes in refractoriness of human atrial myocytes associated with chronic atrial fibrillation. *Cardiovasc Res* 2001;52:226–235.
- Holmes AP, Yu TY, Tull S, et al. A regional reduction in Ito and IKACH in the murine posterior left atrial myocardium is associated with action potential prolongation and increased ectopic activity. *PLoS One* 2016;11:e0154077.
- Yu TY, Syeda F, Holmes AP, et al. An automated system using spatial oversampling for optical mapping in murine atria. Development and validation with monophasic and transmembrane action potentials. *Prog Biophys Mol Biology* 2014;115:340–348.
- Skibsbjerg L, Poulet C, Diness JG, et al. Small-conductance calcium-activated potassium (SK) channels contribute to action potential repolarization in human atria. *Cardiovasc Res* 2014;103:156–167.
- Molina CE, Abu-Taha IH, Wang QL, et al. Profibrotic, electrical, and calcium-handling remodeling of the atria in heart failure patients with and without atrial fibrillation. *Front Physiol* 2018;9:1383.
- Fatkin D, Otway R, Vandenberg JJ. Genes and atrial fibrillation—a new look at an old problem. *Circulation* 2007;116:782–792.
- Nattel S, Heijman J, Zhou LP, Dobrev D. Molecular basis of atrial fibrillation pathophysiology and therapy: a translational perspective. *Circ Res* 2020;127:51–72.
- Burashnikov A, Antzelevitch C. Novel pharmacological targets for the rhythm control management of atrial fibrillation. *Pharmacol Ther* 2011;132:300–313.
- Kirchhof P, Kahr PC, Kaese S, et al. PITX2c is expressed in the adult left atrium, and reducing Pitx2c expression promotes atrial fibrillation inducibility and complex changes in gene expression. *Circ Cardiovasc Genet* 2011;4:123–133.
- Wang J, Klysis E, Sood S, Johnson RL, Wehrens XH, Martin JF. Pitx2 prevents susceptibility to atrial arrhythmias by inhibiting left-sided pacemaker specification. *Proc Natl Acad Sci U S A* 2010;107:9753–9758.
- Kirchhof P, Fabritz L, Franz MR. Post-repolarization refractoriness versus conduction slowing caused by class I antiarrhythmic drugs—antiarrhythmic and proarrhythmic effects. *Circulation* 1998;97:2567–2574.
- Roselli C, Rienstra M, Ellinor PT. Genetics of atrial fibrillation in 2020: GWAS, genome sequencing, polygenic risk, and beyond. *Circ Res* 2020;127:21–33.
- Chinchilla A, Daimi H, Lozano-Velasco E, et al. PITX2 insufficiency leads to atrial electrical and structural remodeling linked to arrhythmogenesis. *Circ Cardiovasc Genet* 2011;4:269–279.
- Zhang M, Hill MC, Kadow ZA, et al. Long-range Pitx2c enhancer–promoter interactions prevent predisposition to atrial fibrillation. *Proc Natl Acad Sci U S A* 2019;116:22692–22698.
- Ye J, Tucker NR, Weng LC, Clauss S, Lubitz SA, Ellinor PT. A functional variant associated with atrial fibrillation regulates PITX2c expression through TFAP2a. *Am J Hum Genet* 2016;99:1281–1291.
- Shoemaker MB, Bollmann A, Lubitz SA, et al. Common genetic variants and response to atrial fibrillation ablation. *Circ Arrhythm Electrophysiol* 2015;8:296–302.
- Reyat JS, Chua W, Cardoso VR, et al. Reduced left atrial cardiomyocyte PITX2 and elevated circulating BMP10 predict atrial fibrillation after ablation. *JCI Insight* 2020;5:e139179.
- Goversen B, van der Heyden MAG, van Veen TAB, de Boer TP. The immature electrophysiological phenotype of iPSC-CMs still hampers in vitro drug screening: special focus on IK1. *Pharmacol Ther* 2018;183:127–136.