

Intercomparison and evaluation of global aerosol microphysical properties among AeroCom models of a range of complexity

Mann, G.W.; Carslaw, K.S.; Reddington, C.L.; Pringle, K.J.; Schulz, M.; Asmi, A.; Spracklen, D.V.; Ridley, D.A.; Woodhouse, M.T.; Lee, L.A.; Zhang, K.; Ghan, S.J.; Easter, R.C.; Liu, X.; Stier, P.; Lee, Y.H.; Adams, P.J.; Tost, H.; Lelieveld, J.; Bauer, S.E.

DOI:

[10.5194/acp-14-4679-2014](https://doi.org/10.5194/acp-14-4679-2014)

License:

Creative Commons: Attribution (CC BY)

Document Version

Publisher's PDF, also known as Version of record

Citation for published version (Harvard):

Mann, GW, Carslaw, KS, Reddington, CL, Pringle, KJ, Schulz, M, Asmi, A, Spracklen, DV, Ridley, DA, Woodhouse, MT, Lee, LA, Zhang, K, Ghan, SJ, Easter, RC, Liu, X, Stier, P, Lee, YH, Adams, PJ, Tost, H, Lelieveld, J, Bauer, SE, Tsigaridis, K, Van Noije, TPC, Strunk, A, Vignati, E, Bellouin, N, Dalvi, M, Johnson, CE, Bergman, T, Kokkola, H, Von Salzen, K, Yu, F, Luo, G, Petzold, A, Heintzenberg, J, Clarke, A, Ogren, JA, Gras, J, Baltensperger, U, Kaminski, U, Jennings, SG, O'Dowd, CD, Harrison, RM, Beddows, DCS, Kulmala, M, Viisanen, Y, Ulevicius, V, Mihalopoulos, N, Zdimal, V, Fiebig, M, Hansson, H-C, Swietlicki, E & Henzing, JS 2014, 'Intercomparison and evaluation of global aerosol microphysical properties among AeroCom models of a range of complexity', *Atmospheric Chemistry and Physics*, vol. 14, no. 9, pp. 4679-4713. <https://doi.org/10.5194/acp-14-4679-2014>

[Link to publication on Research at Birmingham portal](#)

Publisher Rights Statement:

Eligibility for repository : checked 30/05/2014

General rights

Unless a licence is specified above, all rights (including copyright and moral rights) in this document are retained by the authors and/or the copyright holders. The express permission of the copyright holder must be obtained for any use of this material other than for purposes permitted by law.

- Users may freely distribute the URL that is used to identify this publication.
- Users may download and/or print one copy of the publication from the University of Birmingham research portal for the purpose of private study or non-commercial research.
- User may use extracts from the document in line with the concept of 'fair dealing' under the Copyright, Designs and Patents Act 1988 (?)
- Users may not further distribute the material nor use it for the purposes of commercial gain.

Where a licence is displayed above, please note the terms and conditions of the licence govern your use of this document.

When citing, please reference the published version.

Take down policy

While the University of Birmingham exercises care and attention in making items available there are rare occasions when an item has been uploaded in error or has been deemed to be commercially or otherwise sensitive.

If you believe that this is the case for this document, please contact UBIRA@lists.bham.ac.uk providing details and we will remove access to the work immediately and investigate.



Intercomparison and evaluation of global aerosol microphysical properties among AeroCom models of a range of complexity

G. W. Mann^{1,2}, K. S. Carslaw², C. L. Reddington², K. J. Pringle^{2,5}, M. Schulz³, A. Asmi⁴, D. V. Spracklen², D. A. Ridley^{2,6}, M. T. Woodhouse^{2,25}, L. A. Lee², K. Zhang^{7,8}, S. J. Ghan⁸, R. C. Easter⁸, X. Liu^{8,37}, P. Stier⁹, Y. H. Lee^{10,13}, P. J. Adams¹⁰, H. Tost^{5,32}, J. Lelieveld^{5,12}, S. E. Bauer^{11,13}, K. Tsigaridis^{11,13}, T. P. C. van Noije¹⁴, A. Strunk¹⁴, E. Vignati¹⁵, N. Bellouin¹⁶, M. Dalvi¹⁷, C. E. Johnson¹⁷, T. Bergman¹⁸, H. Kokkola¹⁸, K. von Salzen¹⁹, F. Yu²⁰, G. Luo²⁰, A. Petzold^{21,33}, J. Heintzenberg²², A. Clarke²³, J. A. Ogren²⁴, J. Gras²⁵, U. Baltensperger²⁶, U. Kaminski²⁷, S. G. Jennings²⁸, C. D. O'Dowd²⁸, R. M. Harrison^{29,34}, D. C. S. Beddows²⁹, M. Kulmala³⁰, Y. Viisanen⁴, V. Ulevicius³¹, N. Mihalopoulos³⁵, V. Zdimal³⁶, M. Fiebig³⁸, H.-C. Hansson³⁹, E. Swietlicki⁴⁰, and J. S. Henzing⁴¹

¹National Centre for Atmospheric Science, University of Leeds, Leeds, UK

²School of Earth and Environment, University of Leeds, Leeds, UK

³Norwegian Meteorological Institute, Oslo, Norway

⁴Helsinki University, Helsinki, Finland

⁵Max Planck Institute for Chemistry, Mainz, Germany

⁶Civil and Environmental Engineering, Massachusetts Institute of Technology, Cambridge, MA, USA

⁷Max Planck Institute for Meteorology, Hamburg, Germany

⁸Pacific Northwest National Laboratory, Richland, WA, USA

⁹Department of Physics, University of Oxford, Oxford, UK

¹⁰Civil & Environment Engineering, Carnegie Mellon University, Pittsburgh, PA, USA

¹¹Center for Climate Systems Research, Columbia University, New York, NY, USA

¹²The Cyprus Institute, Nicosia, Cyprus

¹³NASA Goddard Institute for Space Studies, New York, USA

¹⁴Royal Netherlands Meteorological Institute (KNMI), De Bilt, the Netherlands

¹⁵EU Joint Research Centre (JRC), Ispra, Italy

¹⁶Department of Meteorology, University of Reading, Reading, UK

¹⁷Met Office Hadley Centre, Exeter, UK

¹⁸Finnish Meteorological Institute, Kuopio Unit, Kuopio, Finland

¹⁹Canadian Centre for Climate Modelling and Analysis, Environment Canada, Canada

²⁰Department of Earth and Atmospheric Sciences, NY State University, Albany, USA

²¹Institute of Atmospheric Physics, DLR, Oberpfaffenhofen, Germany

²²Leibniz Institute for Tropospheric Research, Leipzig, Germany

²³Department of Oceanography, University of Hawaii, Honolulu, HI, USA

²⁴Earth System Research Laboratory, NOAA, Boulder, Colorado, USA

²⁵CSIRO Marine and Atmospheric Research, Aspendale, Victoria, Australia

²⁶Paul Scherrer Institute, Villigen, Switzerland

²⁷Deutscher Wetterdienst (DWD), Germany

²⁸National University of Ireland Galway, Ireland

²⁹National Centre for Atmospheric Science, University of Birmingham, Birmingham, UK

³⁰Department of Physics, University of Helsinki, Helsinki, Finland

³¹Center for Physical Sciences and Technology, Vilnius, Lithuania

³²Institute for Physics of the Atmosphere, Johannes Gutenberg University, Mainz, Germany

³³Forschungszentrum Juelich, IEK-8 Troposphere, Juelich, Germany

³⁴Department of Environmental Sciences, King Abdulaziz University, P.O. Box 80203, Jeddah, 21589, Saudi Arabia

³⁵Department of Chemistry, University of Crete, Heraklion, Greece

³⁶Institute of Chemical Process Fundamentals, Rozvojova, Prague, Czech Republic

³⁷Department of Atmospheric Science, University of WY, Laramie, Wyoming, USA

³⁸Department for Atmospheric and Climate Research, Norwegian Institute for Air Research (NILU), Norway

³⁹Department of Applied Environmental Science, Stockholm University, Sweden

⁴⁰Department of Physics, Lund University, Lund, Sweden

⁴¹Netherlands Organisation for Applied Scientific Research (TNO), Utrecht, the Netherlands

Correspondence to: G. W. Mann (gmann@env.leeds.ac.uk)

Received: 30 August 2013 – Published in Atmos. Chem. Phys. Discuss.: 30 August 2013

Revised: 30 August 2013 – Accepted: 7 April 2014 – Published: 13 May 2014

Abstract. Many of the next generation of global climate models will include aerosol schemes which explicitly simulate the microphysical processes that determine the particle size distribution. These models enable aerosol optical properties and cloud condensation nuclei (CCN) concentrations to be determined by fundamental aerosol processes, which should lead to a more physically based simulation of aerosol direct and indirect radiative forcings. This study examines the global variation in particle size distribution simulated by 12 global aerosol microphysics models to quantify model diversity and to identify any common biases against observations. Evaluation against size distribution measurements from a new European network of aerosol supersites shows that the mean model agrees quite well with the observations at many sites on the annual mean, but there are some seasonal biases common to many sites. In particular, at many of these European sites, the accumulation mode number concentration is biased low during winter and Aitken mode concentrations tend to be overestimated in winter and underestimated in summer. At high northern latitudes, the models strongly underpredict Aitken and accumulation particle concentrations compared to the measurements, consistent with previous studies that have highlighted the poor performance of global aerosol models in the Arctic. In the marine boundary layer, the models capture the observed meridional variation in the size distribution, which is dominated by the Aitken mode at high latitudes, with an increasing concentration of accumulation particles with decreasing latitude. Considering vertical profiles, the models reproduce the observed peak in total particle concentrations in the upper troposphere due to new particle formation, although modelled peak concentrations tend to be biased high over Europe. Overall, the multi-model-mean data set simulates the global variation of the particle size distribution with a good degree of skill, suggesting that most of the individual global aerosol microphysics models are performing well, although the large model diversity indicates that some models are in poor agreement with the observations. Further work is required to better constrain size-resolved primary and secondary particle number sources, and an improved understanding of nucleation and

growth (e.g. the role of nitrate and secondary organics) will improve the fidelity of simulated particle size distributions.

1 Introduction

Atmospheric aerosol exerts a substantial influence on the earth's climate both directly by scattering and absorbing solar and terrestrial radiation (e.g. Haywood and Boucher, 2000) and indirectly by affecting the evolution and optical properties of clouds (e.g. Lohmann and Feichter, 2005). There are also many other ways in which the atmospheric aerosol interacts with the earth's climate system (e.g. Heintzenberg et al., 2012). Surface cooling induced by increases in aerosol abundance since the pre-industrial period may have partially offset the warming from increased greenhouse gases, but there is large uncertainty in the magnitude of aerosol radiative forcings, particularly in the indirect effects associated with changes in cloud properties (Forster et al., 2007). There is also a range of Earth System feedbacks associated with climate change induced changes in natural aerosol and precursor emissions (Carslaw et al., 2010) and these are expected to exert a strong influence on regional climate (Paasonen et al., 2013). There is a need for models to better quantify global aerosol properties and trends in order to reduce uncertainties in model projections of future changes in climate (Andreae et al., 2005) and over recent decades (Booth et al., 2012). To address uncertainties in indirect forcings, it is particularly important to improve model representation of aerosol microphysical properties, such as particle number concentrations and size distributions.

Atmospheric aerosol particles have traditionally been separated into coarse and fine particles (diameters larger and smaller than about 2 μm respectively, e.g. Whitby, 1978), which broadly maps onto whether they were mechanically generated or formed following growth from nanometre-sized nuclei. Aerosol particles are also classified as either primary (i.e. directly emitted), or secondary particles (formed in the atmosphere from gas to particle nucleation). Fine particles are much more numerous than coarse particles (e.g. Raes et al., 2000) and consist of small primary particles

(e.g. sub-micron sea-spray/dust and carbonaceous combustion aerosol) and also secondary particles, which initially form at nanometre sizes, but can grow by coagulation and condensation to large enough sizes to scatter visible radiation and activate into cloud droplets. Fine particles are further separated into Aitken and accumulation modes, based on observed number size distributions in a range of environments showing two distinct peaks, generally found in the 10 to 100 nm and 100 to 1000 nm dry diameter range (Raes et al., 2000). The larger peak occurs at particle sizes where both dry deposition and sedimentation are relatively inefficient, causing size distributions to evolve into a distinct “accumulation” mode. In remote marine regions, the two separate modes are caused by cloud processing, where the larger sub-set of fine particles activate to cloud droplets where they can grow larger following aqueous chemical reactions in non-precipitating clouds (Lelieveld and Heintzenberg, 1992; Hoppel et al., 1994). Although combustion sources generate particles as small as 10 nm dry diameter, these particles rapidly evolve to larger sizes due to coagulation (e.g. Jacobson and Seinfeld, 2004) and global models directly emit the particles in the mid-Aitken size range (e.g. Dentener et al., 2006). The Aitken size range can also contain secondary particles which have grown from an initial nucleation mode at around 1 to 3 nm (e.g. Kulmala et al., 2004).

Modelling the evolution of the particle size distribution is therefore rather complex, and requires an aerosol dynamics scheme whereby two or more moments (e.g. number and mass) are prognosed in several size classes. Models following this approach are called aerosol microphysics models, and can be broadly classified into two different types. Sectional schemes (Gelbard et al., 1980) discretise the particle size spectrum into multiple size bins whereas modal schemes (Whitby and McMurry, 1997) parametrise the variation of the size distribution within the nucleation, Aitken, accumulation and coarse ranges, with each mode usually approximated via a log-normal function in particle dry diameter. In the 1990s, sectional aerosol microphysics schemes were incorporated into several regional air quality models (e.g. Jacobson, 1997a, b; Lurmann et al., 1997) and in the 2000s became established in several global models (Jacobson, 2001; Adams and Seinfeld, 2002; Spracklen et al., 2005a, 2011; Yu and Luo, 2009; Lee and Adams, 2010; Bergman et al., 2012). Two-moment modal aerosol microphysics schemes were similarly initially implemented into regional models (e.g. Binkowski and Shankar, 1995) and subsequently within several global models (Ghan et al., 2001a, b; Wilson et al., 2001; Stier et al., 2005; Liu et al., 2005, 2012; Bauer et al., 2008; Mann et al., 2010; Aan de Brugh et al., 2011; Zhang et al., 2012; Bellouin et al., 2013).

The international AeroCom initiative seeks to improve our understanding of global aerosol and associated radiative forcings and has provided a mechanism for coordinating efforts to evaluate and intercompare global aerosol models. The stated overall goals of AeroCom are to identify weaknesses

in particular models and modelling aspects, and to assess uncertainties in simulated aerosol properties and radiative forcings (Kinne et al., 2006). The first phase of AeroCom aligned with the lead-up to the Intergovernmental Panel on Climate Change (IPCC) fourth climate assessment report (AR4), and resulted in several multi-model intercomparison papers documenting simulated aerosol optical properties (Kinne et al., 2006), aerosol lifecycles (Textor et al., 2006, 2007) and radiative forcings (Schulz et al., 2006; Penner et al., 2006). New observational constraints on simulated aerosol optical properties from satellite measurements and retrievals from the AERONET global network of sun photometers led to a reduced uncertainty range for aerosol direct forcings in AR4, which also caused a narrower uncertainty range in total anthropogenic radiative forcing (Haywood and Schulz, 2007).

In recent years, many more modelling centres have incorporated aerosol modules with size-resolved aerosol microphysics into climate models. This represents a major shift in model sophistication (Ghan and Schwarz, 2007), improving upon previous “first generation” aerosol schemes in which aerosol optical properties and cloud droplet concentrations tended to be based on the simulated mass of several externally mixed aerosol types, each assigned a prescribed size distribution. The microphysical aerosol schemes calculate and transport the number concentration and component mass in several size classes of particles and can also represent both external and internal mixtures. Separate transport of size-resolved number and mass allows growth processes such as condensation and aqueous sulfate production to realistically conserve particle number while adding mass, and enables new particle formation and coagulation to provide explicit sources and sinks for particle number, which has been shown to be important in capturing changes in aerosol in response to changing emissions (Bellouin et al., 2013). The microphysics models explicitly simulate the evolution of the particle size distribution, and use this to determine aerosol optical properties and cloud condensation nuclei concentrations. In so doing, they represent aerosol interactions with clouds and radiation consistently with the underlying physics of the fundamental aerosol processes. We note however that climate model representations of cloud processes tend to be highly parametrised, and characterising aerosol–cloud interactions in these models continues to be a major challenge.

In the second phase of AeroCom (AeroCom-2), working groups have been established to examine different aspects of the global aerosol, with a new set of experiments defined (Schulz et al., 2009). Analysis of the AeroCom-2 experiments, and of the original set of experiments, have led to recent publications with multi-model comparisons of simulated direct forcings (Myhre et al., 2013), indirect effects (Quaas et al., 2009), black carbon (Koch et al., 2009; Schwarz et al., 2010; Samset et al., 2013), dust (Huneus et al., 2011), vertical profiles (Koffi et al., 2012), radiative transfer (Stier et al., 2013; Randles et al., 2013) and

organics (Tsigaridis et al., 2014). This paper reports initial findings from a working group to intercompare and evaluate 12 global aerosol microphysics models which participated in AeroCom-2. This initial study focuses on the particle size distribution, whose evolution is specifically simulated by these models, and has so far not specifically been considered in AeroCom publications. Note that we also plan a follow-up study to intercompare simulated CCN concentrations, and will use the globally varying size distribution fields derived here for offline calculations of cloud droplet number concentrations and first indirect radiative effects predicted by the global aerosol microphysics models.

The present paper has three key objectives. First, we aim to document the diversity of simulated particle number concentrations in several size ranges among the new generation of global aerosol microphysics models. Secondly, we derive data sets of multi-model mean particle concentrations that can be used as a reference for future development and improvement of these models. Thirdly, we evaluate the multi-model mean (with associated diversity) against several benchmark observational data sets from ground station networks and compilations over multiple field campaigns. The chosen benchmark observational data sets have been selected to provide a climatological overview of the skill of the models covering both marine and a range of different continental environments, both at the surface and in the vertical profile. In carrying out these objectives, we aim to determine how well the models simulate aerosol microphysical properties and identify any generic weaknesses or gaps in scientific understanding.

2 Methodology

2.1 Particle size distribution metrics considered

Aerosol indirect radiative effects are driven by the sub-set of particles large enough to be activated to cloud droplets (so-called cloud condensation nuclei, CCN). Although the minimum size for activation can be just a few tens of nm for supersaturations of around 1.0 %, concurrent size distribution and CCN measurements for more moderate supersaturations of 0.2 to 0.5 % suggest that 50 to 100 nm is a reasonable value for the threshold CCN diameter (Kerminen et al., 2012). Aerosol microphysical processes such as nucleation, coagulation, condensation and cloud processing exert a strong control on the evolution of nucleation, Aitken and accumulation mode particle concentrations and are therefore very important in determining CCN concentrations.

In comparing and evaluating size distributions simulated by global aerosol microphysics models, we will often consider integral size-resolved particle concentrations, which help summarise the comparisons and evaluation considering different sub-sets of particles. The number concentrations N_3 , N_{10} , N_{14} are integral concentrations of particles

with dry diameters larger than 3, 10 and 14 nm, and are often referred to as condensation nuclei (CN). The sizes refer to the typical thresholds of condensation particle counter (CPC) instruments, which we use to evaluate the total number of particles simulated by the models across the full measurable particle size range. Not all of these particles are directly relevant to CCN, but they provide information about how well the models capture concentrations of secondary particles, which contribute a large fraction of CCN in many regions (e.g. Merikanto et al., 2009; Kerminen et al., 2012).

We also consider concentrations of particles larger than 30, 50 and 100 nm dry diameter (N_{30} , N_{50} and N_{100}). The N_{50} concentrations counts accumulation and coarse sized particles, and also part of the Aitken size range, with 50 nm representing the minimum size ammonium sulfate particles would activate at supersaturations of 0.42 % (a value typical for marine stratocumulus). The 30 nm dry diameter (N_{30}) represents a typical lower size limit for activation (0.9 % supersaturation) and 100 nm (N_{100}) represents an upper limit (0.14 % supersaturation). Aerosol optical properties are mainly controlled by particles larger than 100 nm, since they account for most of the light scattering at visible and longer wavelengths. None of these metrics are uniquely relevant to the aerosol effect on clouds and climate because the actual activation size depends on the particle chemical composition, cloud updraught velocity and the details of the full size distribution (e.g. Abdul-Razzak and Ghan, 2000; Nenes and Seinfeld, 2003). However, studies suggest (e.g. Dusek et al., 2006) that the particle number size distribution is the most important quantity in determining atmospheric CCN concentrations (Kerminen et al., 2012). The metrics therefore represent typical aerosol microphysical properties of relevance to climate and can easily and consistently be compared among models and with observations.

2.2 Description of model experiments

For the second phase of AeroCom coordinated experiments (Schulz et al., 2009), a new control present-day emissions simulation was defined (A2-CTRL-2006). A matching pre-industrial emissions double-call nudged run (A2-PRE-2006) was also requested for intercomparison of simulated direct aerosol forcings (see Myhre et al., 2013). To reduce inter-model differences, general circulation models (GCMs) were advised to use nudging techniques (e.g. Jeuken et al., 1996; Telford et al., 2008) to follow meteorological re-analysis fields for the year 2006. Also, GCMs were asked to use a double-call configuration (see e.g. Bellouin et al., 2013) whereby the main “advancing call” to the model radiation scheme has zero aerosol and only a second “diagnostic-call” includes the simulated aerosol properties. This approach allows aerosol forcings to be diagnosed without the aerosol feeding back on the model dynamics, so that control and perturbed experiments have equivalent meteorology. Modellers were also requested to submit 3-D monthly-mean data sets

Table 1. List of participating global aerosol microphysics models. Two-moment schemes (2 m) carry number and mass in each size class whereas single-moment (1 m) schemes carry only mass. Most models are modal or sectional but CanAM4-PAM uses the piecewise log-normal approach (pcwise-lgnrml). The “Multi-dist” column indicates whether the scheme includes multiple distributions, i.e. whether it is possible to have two particles of the same size but different composition. The “Tracers” column indicates the total number of transported aerosol tracers for each scheme (the sum of the number concentrations and component masses over all size classes). Schemes running in free-running (free) General Circulation Models (GCMs) submitted multi-annual monthly means from 5 yr simulations whereas nudged (nudg) GCMs and CTMs submitted monthly-mean results driven by 2006 meteorological re-analyses.

Model	Scheme type	Classes	Multi-dist	Tracers	Host model	Resolution	Reference
CAM5-MAM3	modal (2 m)	3	N	15	GCM (free)	1.9° × 2.5° × L30	Liu et al. (2012)
HadGEM3-UKCA	modal (2 m)	5	Y	20	GCM (nudg)	1.3° × 1.9° × L63	Mann et al. (2014)
TM5	modal (2 m)	7	Y	25	CTM	2.0° × 3.0° × L34	Aan de Brugh et al. (2011)
GLOMAP-mode	modal (2 m)	7	Y	26	CTM	2.8° × 2.8° × L31	Mann et al. (2012)
EMAC	modal (2 m)	7	Y	41	GCM (nudg)	2.8° × 2.8° × L19	Pringle et al. (2010)
ECHAM5-HAM2	modal (2 m)	7	Y	29(a)	GCM (nudg)	1.9° × 1.9° × L31	Zhang et al. (2012)
GISS-MATRIX	modal ^b (2 m)	16	Y	60	GCM (nudg)	2.0° × 2.5° × L40	Bauer et al. (2008)
CanAM4-PAM	pcwise-lgnrml (2 m)	7	N	20	GCM (free)	3.7° × 3.7° × L35	von Salzen (2006)
GEOS-Chem-APM	mode & sect. (1 m)	100	Y	100	CTM	2.0° × 2.5° × L47	Yu and Luo (2009)
ECHAM5-SALSA	sectional (2 m)	20	Y	65	GCM (nudg)	1.9° × 1.9° × L31	Bergman et al. (2012)
GISS-TOMAS	sectional (2 m)	12	N	72	GCM (free)	4.0° × 5.0° × L09	Lee and Adams (2010)
GLOMAP-bin	sectional (2 m)	40	Y	160	CTM	2.8° × 2.8° × L31	Spracklen et al. (2005a, 2011)

^a Although treatment of SOA in ECHAM5-HAM2 involves 20 SOA species, only four additional advected aerosol tracers are required in addition to the 25 for ECHAM5-HAM. Another four species are required for the condensable organic gases.

^b Note that GISS-MATRIX scheme follows the quadrature method of moments.

of all transported aerosol types (known as aerosol tracers) to allow flexible intercomparison of simulated particle size distributions between models of different complexity. Having the full tracer distribution available also allowed the models to be compared with a wide range of in situ measurements across different particle size ranges.

Twelve global aerosol microphysics models submitted 3-D all-aerosol-tracer data sets for the A2-CTRL-2006 experiment, with a range of sophistication in their aerosol size representation (Table 1). The number of transported aerosol tracers over these global models ranges from 15 to 160, with between 3 and 100 size classes to describe the size distribution. Several models are flexible in the selection of resolution, the number of layers and their vertical extent, and some apply the aerosol schemes in the stratosphere as well as the troposphere. Furthermore, some models include thermodynamics schemes to represent the gas–particle partitioning of semi-volatile components (e.g. Metzger et al., 2002) whereas others parametrise this process or neglect compounds such as nitrate. The model spatial resolution also varied widely, with the highest longitude by latitude resolution at 1.875° by 1.25° and the lowest at 4.0° by 5.0°. Six of the eight GCMs nudged to meteorological re-analyses from the year 2006, with the chemical transport models (CTMs) prescribing winds and temperatures from meteorological re-analyses also from that year. Where modelling centres did not have the capability to nudge their GCM to meteorological re-analysis fields, results were submitted from means over 5 yr of free-running simulations.

Seven of the models use modal aerosol schemes (GLOMAP-mode, ECHAM5-HAM2, EMAC, TM5, CAM5-MAM3, GISS-MATRIX and HadGEM-UKCA), three use sectional schemes (GISS-TOMAS, GLOMAP-bin and ECHAM5-SALSA), whilst GEOS-Chem-APM uses a modal approach for black carbon (BC) and primary organic particles, with sectional approach for other particle types. CanAM4-PAM uses the piecewise log-normal approach, which applies sectional and modal methods for different parts of the particle size spectrum (see von Salzen, 2006).

Eleven of the 12 models use two-moment approaches whereby both the number and mass concentration in each size class are transported, allowing each size class to have representative size which varies in time and space. The GEOS-Chem-APM model uses a single-moment approach, but has a large number of size classes to allow the size distribution to freely evolve in response to the processes.

Table 2 summarises the primary and secondary aerosol sources used in each model. Although the intention was for the models to use the same anthropogenic emissions from Diehl et al. (2012) for the year 2006, this was not achieved, with some submissions using the IPCC year 2000 emissions (Lamarque et al., 2010), and others using the AEROCOM first-phase emissions (Dentener et al., 2006). In addition to these differences in emissions inventories, the models also used their own choice for the size and injection heights applied to primary emissions sources. Although recommendations for these emission size assumptions were made by Dentener et al. (2006) for several source types based on measurements in the literature, there is a wide

Table 2. Treatment of emissions, oxidants and nucleation in each model. Abbreviations for emissions are AERO-00 (Dentener et al., 2006), HCA-06 (Diehl et al., 2012), IPCC-00 (Lamarque et al., 2010), IPCC-06 (RCP4.5 for 2006, Thomson et al., 2011). The “Primary size” column refers to the geometric mean diameter values (nm) assumed for primary carbonaceous emissions, which most (but not all) models treat as a source of particles consisting of an internal mixture of BC and OC. The comma-separated values shown are for fossil fuel and biofuel sources respectively with geometric standard deviation also shown in parentheses. Nucleation parametrisations are abbreviated as BHN (binary homogeneous nucleation), BLN (activation boundary layer nucleation), THN (ternary homogeneous nucleation), IIN (ion-induced nucleation) and IMN (ion-mediated nucleation). References for nucleation parametrisations are V02 (Vehkamaki et al., 2002), S06 (Sihto et al., 2006), M07 (Merikanto et al., 2007), K98 (Kulmala et al., 1998), K10 (Kazil et al., 2010), N02 (Napari et al., 2002) and Y10 (Yu, 2010). Also shown is each model’s column global burdens of sulfate (Tg of sulfur) and BC (Tg of carbon), and global mean surface number concentrations (cm^{-3}) of particles with dry diameter larger than 30 nm (N_{30}) and 100 nm (N_{100}).

Model	Emissions	Primary size	Oxidants	Nucleation	SO ₄	BC	N_{30}	N_{100}
CAM5-MAM3	IPCC-00	80, 80 (1.80,1.80)	prescribed	BHN (V02) and BLN (S06)	0.42	0.08	447	231
HadGEM3-UKCA	IPCC-00	60, 150 (1.59,1.59)	online	BHN (V02)	0.60	0.10	425	198
TM5	IPCC-06	30, 30 (1.59,1.59)	online	BHN (V02)	0.51	0.16	1535	186
GLOMAP-mode	HCA-06	30, 80 (1.80,1.80)	prescribed	BHN (K98)	0.75	0.11	527	313
EMAC	AERO-00	60, 150 (1.59,1.59)	online	BHN (V02)	0.38	0.20	1140	405
ECHAM5-HAM2	HCA-06	60, 60 (1.59,1.59)	prescribed	IIN (K10)	0.94	0.12	490	199
GISS-MATRIX	IPCC-00	50, 100 (1.80,1.80)	online	THN (N02)	0.60	0.09	213	108
CanAM4-PAM	HCA-06	30, 80 (1.80,1.80)	prescribed	THN (M07)	0.61	0.15	1868	480
GEOS-Chem-APM	AERO-00*	60, 150 (1.80,1.80)	online	IMN (Y10)	0.59	0.12	705	274
ECHAM5-SALSA	HCA-06	60, 150 (1.59,1.59)	prescribed	BHN (V02)	0.61	0.08	380	154
GISS-TOMAS	AERO-00	30, 80 (1.80,1.80)	prescribed	BHN (V02)	1.39	0.11	1129	379
GLOMAP-bin	HCA-06	30, 80 (1.80,1.80)	prescribed	BHN (K98)	0.80	0.12	972	411

* Except for anthropogenic SO₂ and NO_x which is based on the Emissions Database for Global Atmospheric Research (EDGAR) inventory (Olivier and Berdowski, 2001) and scaled to year 2006 with also some improved estimates from other inventories for several regions (G. Luo, personal communication, 2013).

range of values used by the models. The assumed size has been shown to have a strong influence on simulated particle concentrations (Spracklen et al., 2010) and size distribution (Reddington et al., 2011), so we list these here for each model. Many of the models used prescribed oxidant fields in determining aerosol precursor oxidation, although five did have tropospheric chemistry schemes determining oxidant concentrations online in the simulation. A diversity of nucleation parametrisations was apparent across the models, with most including only binary homogeneous nucleation which produces particles only in the free troposphere. Only one of the models used an empirical boundary layer nucleation mechanism (e.g. Sihto et al., 2006) for their AEROCOM simulations, although some models simulate ternary or ion-induced/mediated nucleation which can generate particles efficiently in the boundary layer. The simulated burdens and surface size-resolved number concentrations from each model are also shown in Table 2 for reference.

Comparison of aerosol properties simulated by the same aerosol microphysics scheme implemented within different modelling frameworks have been carried out for both sectional (Trivitayanurak et al., 2008) and modal (Zhang et al., 2010) modules, and have shown that predictions are sensitive to host model differences. We have therefore chosen not to try to discriminate the extent to which sectional schemes may outperform modal aerosol microphysics schemes, as we

believe this would not be possible given the variety of host model frameworks used for the benchmark simulations.

2.3 Deriving comparable model size distributions

To compare particle size distributions between models of different complexity, the 3-D-varying number and size for each size class is required. The CanAM4-PAM and GEOS-Chem-APM models submitted data sets which had mapped their size classes onto a fixed size bin grid. Since all other models followed either two-moment modal or two-moment sectional size distribution approaches, a common methodology could be applied. First, the mean dry volume $V_{\text{dry},i}$ was calculated for each size class i summing over all present internally mixed aerosol components j (sulfate, sea salt, BC, organic matter, dust, nitrate or ammonium):

$$V_{\text{dry},i} = \sum_j \left(\frac{m_{ij} M_j}{N_a \rho_j} \right), \quad (1)$$

where m_{ij} is the number of molecules per particle of component j in mode i , the ρ_j and M_j are the density and molar mass of component j and N_a is Avogadro’s constant. The m_{ij} values were derived from each model’s submitted number concentrations (n_i) and mass mixing ratios (q_{ij}) as

$$m_{ij} = \frac{M_{\text{da}} q_{ij} p}{M_j n_i k_B T}, \quad (2)$$

where M_{da} is the molar mass of dry air, k_{B} is Boltzmann's constant and p and T are the ambient pressure and temperature. Once the mean dry volume for each size class was derived, the geometric (number) mean dry diameter \bar{D}_i was then calculated as

$$\bar{D}_i = \left(\frac{6V_{\text{dry},i}}{\pi \exp(4.5 \log_e^2(\sigma_{g,i}))} \right)^{\frac{1}{3}}, \quad (3)$$

where $\sigma_{g,i}$ is set to unity for sectional schemes and to their assumed constant values for the log-normal modes used by the modal schemes. Each modelling group provided a document explaining the mapping from tracer index to size class and aerosol component, together with their scheme's values for $\sigma_{g,i}$, ρ_j and M_j .

The monthly-mean number concentration N_i and size \bar{D}_i was then calculated for each size class on the 3-D grid. The vertical coordinate grid for each model was also constructed from the information provided.

Size-resolved number concentrations were then derived for particles larger than 3, 10, 14, 30, 50 and 100 nm by integrating the size distribution based on n_i , D_i and $\sigma_{g,i}$ in each size class. These threshold dry diameters (D_{thresh}) were chosen to facilitate comparison with the measurements described in Sect. 3.2. For modal schemes, partial integrals over each log-normal size class were computed using the error function. For sectional schemes, the calculation involved summing the number concentration in all size classes larger than the threshold size including a fractional contribution from bins with interface dry diameters that span D_{thresh} .

To enable size distributions to be assembled into a multi-model mean, each model's size distribution was calculated on a common size grid. For sectional models, the number size distribution $\frac{dN}{d \log_{10}(D)}$ was first constructed on the parent size grid:

$$\left\{ \frac{dN}{d \log_{10}(D)} \right\}_i = \log_e(10) \frac{N_i \bar{D}_i}{\Delta D_i}, \quad (4)$$

where ΔD_i is from the parent model bin dry diameter grid. These parent dry diameter grid size distributions were then interpolated onto a common 50-bin grid D_k between 1 nm and 10 μm . For modal schemes, $\frac{dN}{d \log_{10} D}$ was calculated by evaluating the lognormal distribution on the common 50-bin grid:

$$\left\{ \frac{dN}{d \log_{10}(D)} \right\}_k = \log_e(10) \frac{N_i}{(2\pi)^{0.5} \log_e(\sigma_{g,i})} \exp \left\{ -\frac{(\log_e(D_k) - \log_e(\bar{D}_i))^2}{2 \log_e^2(\sigma_{g,i})} \right\}. \quad (5)$$

Although calculating size-resolved number concentrations and size distributions from monthly-mean aerosol tracers does not account for higher temporal variations in mass to

number ratios, the approach allows us to intercompare the full set of global aerosol microphysics models with a consistent methodology. To assemble the multi-model mean and diversity, each model quantity at the surface (BC, sulfate, N_{30} , N_{100}) was interpolated onto a 1° by 1° grid and zonal-means against latitude and height were interpolated onto a 1° by 100 m grid.

2.4 Definition of multi-model mean and diversity

In Sect. 3.1, we examine spatial distributions of multi-model mean and diversity over a “central” sub-set of the models, omitting models with aerosol properties outside a chosen range. Such central-model-mean fields provide a “best estimate” of the global distribution of aerosol properties and may also become useful as reference data sets against which to assess evolving model development. We follow the approach of Kinne et al. (2006) in using the central two-thirds (here eight models) as the basis for the central model mean and diversity. When calculating the central-8 mean we take the geometric mean over the values for each model. Note that the assessment of which models are “central” is done locally, so the central mean will be over different models in different regions. As in Kinne et al. (2006), the diversity is presented as the ratio of the maximum and minimum values over those central two-thirds of models. This approach is useful as it immediately gives the factor over which those central models range. It is important to note that we always refer to model diversity as the ratio of the central two-thirds maximum and minimum (rather than as an absolute quantity) to enable the diversity to be compared between clean and polluted regions. Finally, we note that multi-model diversity is not the same as the true model uncertainty. For example, the diversity may be low close to emissions sources if models use similar emissions inventories. Additional uncertainty will be caused by uncertainties in emissions (L. A. Lee et al., 2013) which has not been accounted for here.

3 Results

3.1 Multi-model mean and diversity of aerosol properties

As a reference to help understand the mean and diversity of size-resolved number concentrations, we first examine simulated mass concentrations of sulfate and BC. We do not intercompare simulated particulate organic matter (POM) among the models as this is the subject of another AeroCom intercomparison paper (Tsigaridis et al., 2014). We also do not analyse simulated mass concentrations of dust and sea salt as they are mainly from super- μm particles, whereas our focus is on sub- μm particles. Note however, that the size-resolved POM, dust and sea salt masses in the models are included in the construction of the model size distributions, and hence

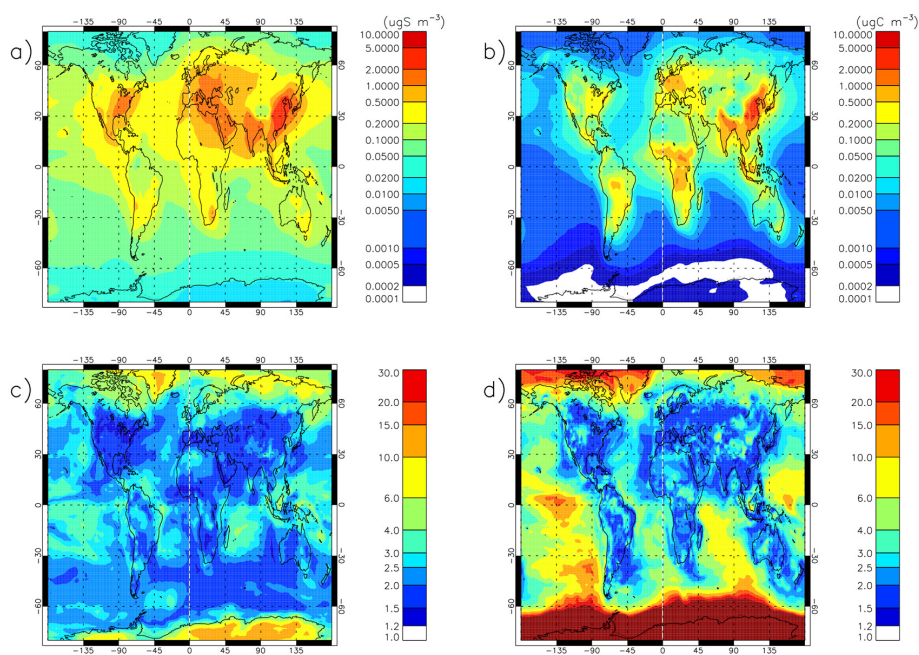


Figure 1. Global maps of central-8 model mean (panels **a** and **b**) and diversity (panels **c** and **d**) for simulated annual mean surface mass concentrations of sulfate (**a**, **c**) and black carbon (**b**, **d**). Diversity here is the ratio of the maximum and minimum values over the central 8 of the 12 models (defined locally, as described in Sect. 2.4). Note that the geometric mean is used when averaging over the central-8 models.

their influence on size-resolved number concentration is accounted for.

3.1.1 Surface sulfate and black carbon

Sulfate is mostly a secondary aerosol species formed by oxidation of sulfur dioxide (SO_2). In marine regions SO_2 derives mainly from the oxidation of dimethyl sulfide (DMS), produced by phytoplankton, although SO_2 from continuously erupting volcanoes also has an important influence on aerosol properties (Andres and Kasgnoc, 1998; Schmidt et al., 2012). In the present-day atmosphere, the dominant global source of sulfate is derived from anthropogenic SO_2 which greatly exceeds marine and volcanic SO_2 sources (e.g. Dentener et al., 2006). Figure 1a illustrates this strong anthropogenic influence, with the multi-model mean sulfate mass concentration highest over the main industrialised regions, with maximum surface annual means of 2 to $5 \mu\text{g m}^{-3}$ of sulfur over eastern China.

BC mainly determines the aerosol absorption and is a primary aerosol mass species, being directly emitted from wildfires and anthropogenic fossil fuel and biofuel combustion sources. The global BC distribution in Fig. 1b reflects these source regions, and since the vast majority of BC is emitted from continental sources, marine concentrations are typically at least a factor of 10 lower than over the continents.

The central diversities of surface sulfate and BC mass (Fig. 1c and d) are generally lower in continental regions than in marine regions. For BC, which is almost entirely emit-

ted in continental regions, this land–sea contrast in diversity is much greater. Since BC is a primary emitted species, the main cause of the diversity near to the sources is likely to be differences in emissions between the models, although boundary layer mixing and dry deposition may also play a role. BC emissions are treated in all models based on prescribed emissions inventories, and Fig. 1d shows that the diversity in simulated BC concentrations is less than a factor of 2 in the main polluted regions.

In general, the diversity in surface BC (Fig. 1d) increases substantially with distance away from source, from a factor of about 3 in the main source regions to a factor of 4 to 6 in more remote marine regions, and to around a factor of 10 or more at high latitudes. These large diversities are consistent with the findings from Koch et al. (2009) who found the largest model BC diversity occurred in northern Eurasia and the remote Arctic and Schwarz et al. (2010) who showed that, over the remote Pacific, the ratio of the 75th to 25th percentiles was around a factor of 10 at the surface between 60°N and 60°S and a factor of 30 to 100 at higher latitudes. In these previous studies, the differences were attributed to both emissions and removal processes. The mapping of the diversity here suggests that differences in removal processes are the dominant source of model BC diversity in remote regions (possibly in combination with approaches to ageing), because diversity is much lower in the main emission regions. This finding agrees with recent studies (Vignati et al., 2010; Kipling et al., 2013) which have also found a strong influence of model treatment of scavenging on simulated BC in

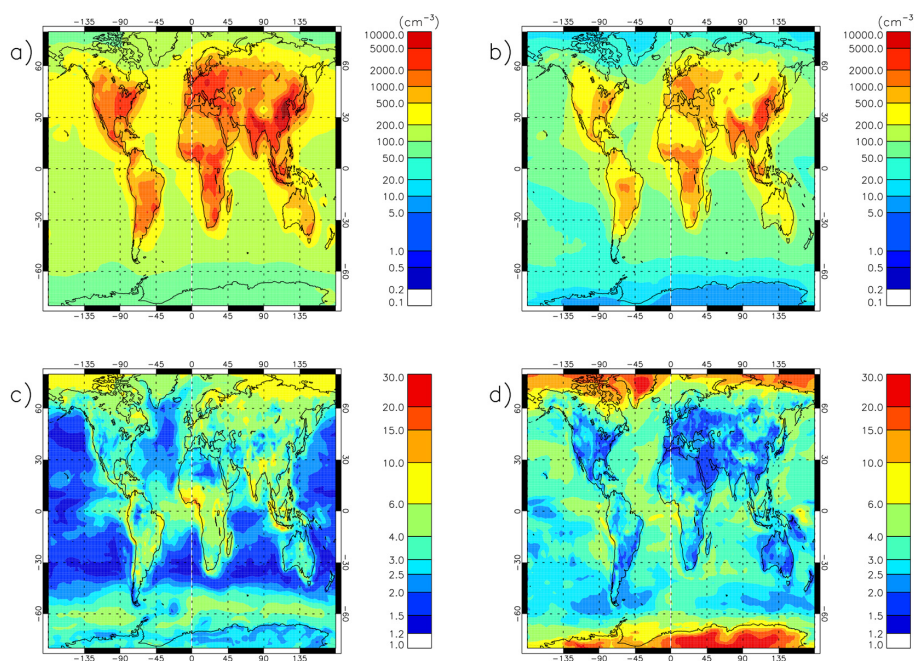


Figure 2. Global maps of central-8 model mean (panels **a** and **b**) and diversity (panels **c** and **d**) for simulated annual mean surface size-resolved number concentrations for $N(D_p > 30 \text{ nm})$ (**a**, **c**) and $N(D_p > 100 \text{ nm})$ (**b**, **d**). Diversity here is the ratio of the maximum and minimum values over the central 8 of the 12 models (defined locally, as described in Sect. 2.4). Note that the geometric mean is used when averaging over the central-8 models.

remote regions. Y. H. Lee et al. (2013) investigated the diversity in simulated BC from seven models participating in the Atmospheric Chemistry and Climate Model Intercomparison Project (ACCMIP) and also found increasing diversity with increasing distance from source, with the standard deviation among simulated Arctic BC columns greater than their mean. In that study, only one of the chemistry–climate models was nudged to meteorological reanalysis data, while all models used the same emissions inventory, and the large diversity in simulated BC (a factor of 3 for global column burdens) was found to be caused by differences in removal and transport.

The diversity in surface sulfate mass has regional variations that are not evident in BC. For example, there is much more diversity over the high-sulfate region in Europe than over the eastern United States (US). By contrast, the two regions have similar BC diversity at the surface, although the western US is more diverse in simulated BC, where wildfire emissions dominate. Figure 1c also shows that model diversity in simulated sulfate is much higher in northern Europe than in southern Europe. An important sulfate production mechanism is from aqueous oxidation of dissolved sulfur dioxide in cloud droplets (e.g. Barrie et al., 2001) via aqueous chemical reactions with dissolved hydrogen peroxide and ozone. In northern Europe, concentrations of hydrogen peroxide and ozone are much lower than in southern Europe (e.g. Berglen et al., 2004) and different treatments of chemistry, including some models' prescription of oxidant fields (see Table 2) could explain the higher sulfate diversity

in northern Europe. The higher sulfate diversity in northern Europe could also be explained by the expected increase with distance away from the source region, due to differences in the representation of removal processes. However, the BC diversity map does not show this maximum in northern Europe, so the model treatment of sulfate production is the more likely cause. In their comprehensive analysis of aerosol microphysical uncertainties, L. A. Lee et al. (2013) also found that aqueous sulfate production was a major cause of uncertainty in simulated CCN at high northern latitudes.

3.1.2 Surface size-resolved particle concentrations

Figure 2 shows global maps of particle number concentrations with dry diameter larger than 30 nm (N_{30} , Fig. 2a) and 100 nm (N_{100} , Fig. 2b). In each grid box, the central two-thirds of the model annual means was calculated, and the map shows the geometric mean over those eight values. Surface N_{30} concentrations are highest in the main industrialised regions, due mainly to anthropogenic primary emissions. In eastern China, annual mean N_{30} reaches $10\,000 \text{ cm}^{-3}$, and in India, central Europe and eastern USA there are large regions with annual-mean N_{30} above 2000 cm^{-3} . Regions with strong biomass burning emissions also have high annual mean N_{30} , with central Africa and South America in excess of 1000 cm^{-3} . In marine regions, N_{30} is much higher in the Northern Hemisphere than the Southern Hemisphere, exceeding 200 cm^{-3} everywhere between 30 and 60° N in

the North Atlantic and North Pacific. By contrast, N_{30} is less than 200 cm^{-3} throughout the Southern Hemisphere marine boundary layer, falling below 100 cm^{-3} poleward of 60° S . It is interesting that, even in the Antarctic, annual mean N_{30} never falls below 50 cm^{-3} , whereas the annual means of N_{100} and the mass concentrations of sulfate and BC mass have steep meridional gradients towards the remote polar regions. This constant background N_{30} is likely due to a steady source of particles from nucleation in the free troposphere (e.g. Raes, 1995; Merikanto et al., 2009). The presence of this constant background source of potential CCN could be important for determining the baseline pre-industrial cloud droplet concentrations which has a strong influence on indirect forcing over the industrial period (e.g. Carslaw et al., 2013; Schmidt et al., 2012).

Surface N_{100} concentrations show a similar spatial distribution to N_{30} in continental regions, but with lower concentrations. However, in the outflow regions off the coast of East Asia and eastern USA, N_{100} decreases more rapidly away from the source than N_{30} which may reflect a lower proportion of particles in marine N_{100} than N_{30} . Another factor is that larger particles tend to be shorter-lived because they are more efficiently removed by nucleation scavenging. Only a weak local maximum in N_{100} is seen in the high sea-spray belt in the Southern Ocean between 40 and 55° S with N_{100} above 50 cm^{-3} , and N_{100} only falls below 10 cm^{-3} over continental Antarctica.

The diversity in the main anthropogenic emissions regions (Fig. 2c) is high for N_{30} (factor 2 to 5), whereas N_{100} is substantially lower (within a factor of 2, Fig. 2d) and follows a continental diversity pattern similar to BC (Fig. 1d). The high continental N_{30} diversity is partly due to differences in assumed size distribution for primary emissions sources in the different models (see Table 2). A smaller assumed size results in higher primary particle number emissions (for a given particle emission mass flux), and also affects simulated size-dependent processes such as gas to particle transfer and particle growth by coagulation and condensation. Different assumptions for the size distribution of primary emitted particles have been shown to strongly influence simulated particle number concentrations (Pierce and Adams, 2009; Spracklen et al., 2010). Reddington et al. (2011) examined the effect on model size distributions finding a stronger influence on simulated N_{30} than N_{100} in Europe where carbonaceous emissions are mostly from fossil fuel combustion sources. The size at which these primary particles are emitted also strongly affects how efficiently they are removed and also their cloud nucleating and optical properties. As seen in Table 2, although all the models represent new particle formation, most only include a binary nucleation mechanism such as Kulmala et al. (1998) or Vehkamäki et al. (2002). These parametrisations do not generate a significant number of new particles in the continental boundary layer (e.g. Spracklen et al., 2006; Merikanto et al., 2009; Yu et al., 2010), so the main particle number source in continental regions (near the surface)

will tend to be from direct emission of primary particles (e.g. carbonaceous or sub-grid “primary sulfate” particles).

In remote marine regions, N_{30} has a relatively low diversity (a factor of 2), with higher values (factor 3 to 6) seen in regions where primary aerosol dominates the particle source, such as the sea-spray belt (40 to 55° S), and in biomass burning outflow regions (Merikanto et al., 2009). Whereas N_{30} has much higher diversity in continental than marine regions, the reverse is true for N_{100} (Fig. 2d), which has a diversity generally within a factor of 2 in the anthropogenic source regions, although biomass burning regions are more diverse. Marine N_{100} is diverse among the central two-thirds, typically by around a factor 3 to 5, with even higher diversity near the equator.

The patterns of diversity in N_{30} and N_{100} can be explained by differences in the sources of the two size classes of particles. N_{30} in marine regions tends to be dominated by secondary particles which were nucleated in the free troposphere and subsequently entrained into the marine boundary layer (e.g. Raes, 1995; Clarke and Kapustin, 2002; Merikanto et al., 2009). Marine CCN concentrations have been shown (Spracklen et al., 2005b; L. A. Lee et al., 2013) to be relatively insensitive to a factor of 10 change in the free tropospheric nucleation rate, due mainly to the negative feedback effect from coagulation being more effective at higher particle concentrations. In the main sea-spray region (40 – 50° S), the N_{30} diversity is much higher than in other marine regions, likely indicating differences in the way the models treat ultrafine sea-spray, which is more diverse among the models than concentrations of entrained particles from the free troposphere. Observations from field campaigns (e.g. O’Dowd and Smith, 1993) and laboratory measurements (e.g. Martensson et al., 2003) have shown that sea-spray efficiently produces particles down to sub-100 nm dry diameters and global model studies have shown that these ultrafine sea-spray particles contribute directly to CCN (Pierce and Adams, 2006) and also indirectly through their influence on the size distribution of marine sulfate aerosols (Gong and Barrie, 2003). The higher diversity in marine N_{100} (than N_{30}) may also be indicative of those particles being long-range transported or cloud-processed particles that have been shaped by several processes with a higher combined diversity.

3.1.3 Meridional and vertical distributions

In this section, we examine the modelled vertical and meridional distributions, considering zonal-means in each model as a function of latitude and altitude. Figure 3 shows the zonal mean vertical and latitudinal profile of sulfate and BC mass concentrations and Fig. 4 shows N_{30} and N_{100} .

The zonal and annual-mean BC concentrations (Fig. 3b) are highest for latitudes 30 to 40° N at about $0.2\text{ }\mu\text{g m}^{-3}$ of carbon, with a second, slightly weaker, local maximum at 0 – 10° N . These two maxima correspond to the major source regions in the mid-latitude Northern Hemisphere (mostly

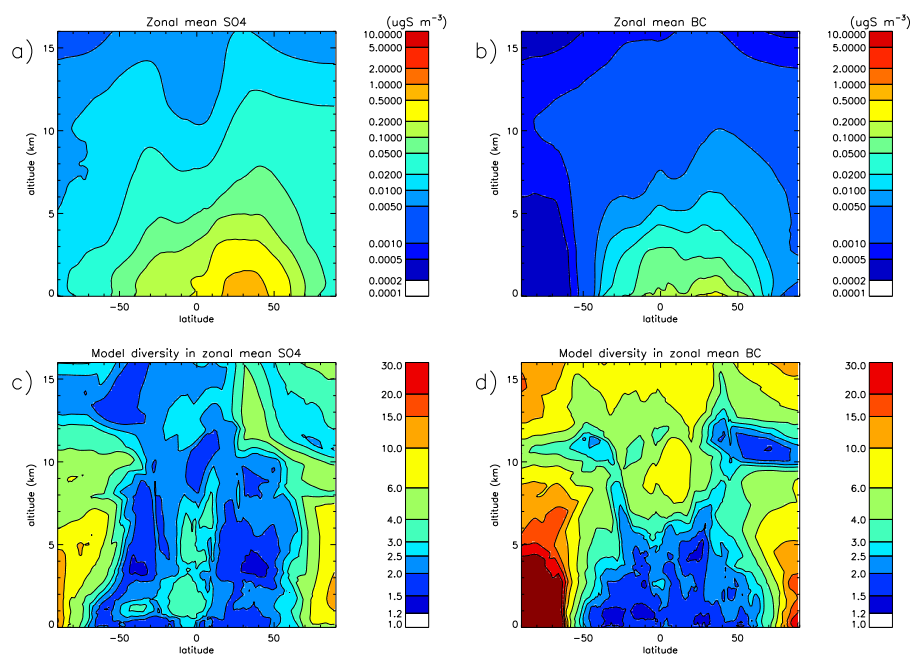


Figure 3. Zonal-mean vs. latitude and altitude plots of central-8 model mean and diversity for simulated annual mean mass concentrations of sulfate (a, c) and black carbon (b, d). Diversity here is the ratio of the maximum and minimum values over the central 8 of the 12 models (defined locally, as described in Sect. 2.4). All concentrations are with respect to local temperatures and pressures in the models. Note that the geometric mean is used when averaging over the central-8 models.

anthropogenic) and tropical regions (mostly biomass burning). It is noticeable that the vertical concentration gradient is steeper for the Northern Hemisphere mid-latitude BC maximum than it is in the Tropics. The explanation is likely to be stronger convection in the Tropics and the fact that wildfire sources can inject aerosol to higher altitudes (e.g. Dentener et al., 2006) whereas anthropogenic BC is mostly emitted near the surface. Since BC is emitted almost entirely in continental regions, its concentration is very low in the mid- and high-latitude Southern Hemisphere.

The vertical profile of BC diversity (Fig. 3d) shows the expected distribution, with the least diversity near source in the lowest few km (50° S–50° N). Model diversity is higher in the mid- and upper troposphere and in remote regions because differences in removal and processing add to the initial emissions-induced diversity near sources. Sulfate has a more complex structure of meridional and vertical diversity distribution compared to BC. The lowest diversity occurs between about 3 and 4 km, with slightly higher model diversity at the surface and a factor of 2 to 3 between 1 and 2 km, possibly due to large differences in model treatments of in-cloud sulfate production. There is a local maximum in model diversity for BC between 8 and 11 km in the latitude range 15° S to 15° N that is not present for sulfate. This is likely due to the strong sensitivity of BC to different model treatments of convective scavenging (e.g. Kipling et al., 2013).

The different vertical and meridional pattern of sulfate and BC diversity reflects the fact that sulfate is a secondary

aerosol species formed via oxidation in the atmosphere some time after emission of the precursor gases (DMS and SO₂). Thus sulfate has a less steep vertical gradient than BC above the northern mid-latitude anthropogenic source regions. The meridional gradient in sulfate is also weaker than for BC since there is a substantial marine source of sulfate originating from DMS (mainly during summer).

The meridional and vertical distribution of N_{30} and N_{100} is shown in Fig. 4. The zonal-mean N_{100} distribution (Fig. 4b) is qualitatively similar to the BC distribution (Fig. 3b), but has a much slower decrease with increasing altitude, suggesting that N_{100} is influenced by secondary particle sources in the free and upper troposphere. N_{30} has an even weaker vertical gradient, particularly in the Southern Hemisphere, consistent with N_{30} being more strongly influenced by secondary particles formed in the free troposphere than N_{100} .

The model diversity in N_{30} (Fig. 4c) is quite high at the surface due to differences in the size distribution of primary emissions. Above the boundary layer the N_{30} diversity is much lower as there is a mixture of nucleated and primary particles. It is interesting that for both N_{30} and N_{100} there is a maximum in model diversity at about 5 to 7 km in the Tropics which could reflect differences in vertical transport and scavenging between the models.

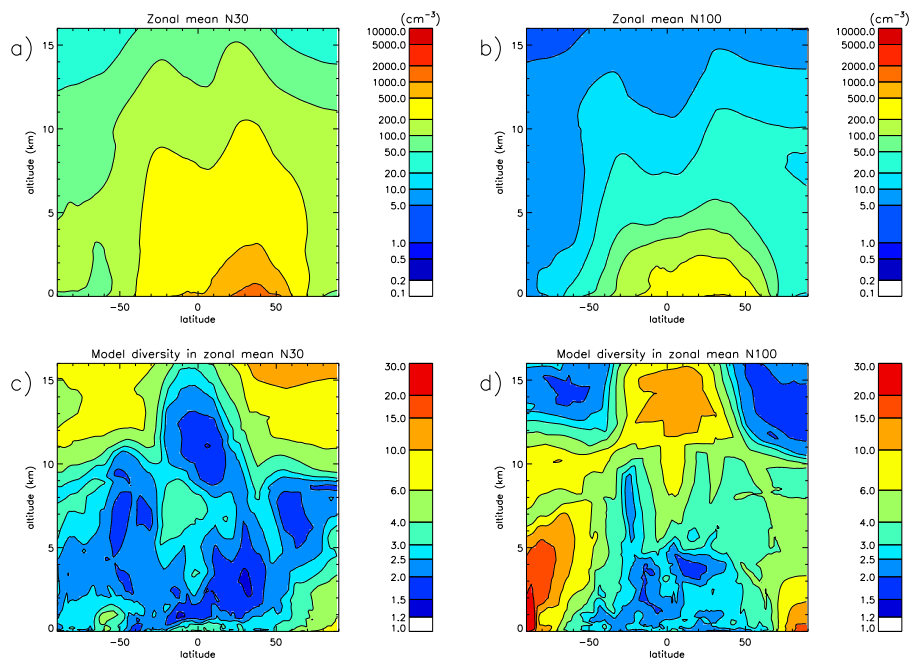


Figure 4. Zonal-mean vs. latitude and altitude plots of central-8 model mean and diversity for simulated annual mean size-resolved number concentrations for $N(D_p > 30 \text{ nm})$ (a, c) and $N(D_p > 100 \text{ nm})$ (b, d). Diversity here is the ratio of the maximum and minimum values over the central 8 of the 12 models (defined locally, as described in Sect. 2.4). All concentrations are with respect to local temperatures and pressures in the models. Note that the geometric mean is used when averaging over the central-8 models.

3.2 Comparison with observations

Previous evaluation of multiple global aerosol models against observations (e.g. Kinne et al., 2006) has tended to focus on data sets with a wide spatial and temporal coverage, such as the AERONET sun photometer network (Holben et al., 1998) or satellite data (e.g. Tanre et al., 1997; Torres et al., 2002; Kahn et al., 1998). Although these data sets have given useful information on the global distribution of column aerosol optical properties, they provide only limited information on the particle size distribution. In situ measurements of the particle size distribution have been made in numerous field campaigns and at monitoring sites over several decades, and several data compilations have been created that are useful for model evaluation.

Here, we evaluate the 12 global aerosol microphysics models against several such data compilations from airborne, ship-borne and land-based in situ measurements. Global aerosol microphysics models are considerably more complex than mass-based aerosol schemes with prescribed size distributions (see Sect. 2.2). As a consequence, intercomparing the size distributions simulated by different aerosol microphysics schemes is a technically challenging exercise. Rather than providing a comprehensive evaluation of each model, the idea here is to assess the skill of the multi-model mean and isolate cases where the central models cannot account for the observations. The data sets used are listed in Table 3 and

are briefly described below. Their locations are shown on a global map in Fig. 5.

– Global Atmosphere Watch (GAW) sites

The World Meteorological Organisation coordinates the GAW network of measurement stations (http://www.wmo.int/pages/prog/arep/gaw/gaw_home_en.html) to provide long-term monitoring of aerosol optical, physical and chemical properties. The first data set we compare the aerosol microphysics models to are CPC measurements of total (size integrated) particle number concentration at 13 of the GAW sites. The measurements for these sites were downloaded from the World Data Centre for Aerosols (WDCA) database hosted by the EU Joint Research Centre (JRC), Ispra (<http://www.jrc.ec.europa.eu/data/parameters/datacnc.html>). Note that this database has now moved from JRC and is currently hosted at the Norwegian Institute for Air Research (NILU) within the wider EBAS database (<http://ebas.nilu.no/>).

As in Spracklen et al. (2010), we classify these 13 GAW sites into three types: free troposphere (FT): Jungfraujoch (JFJ), Mauna Loa (MLO), South Pole (SPO), marine boundary layer: Mace Head (MHT), Neumayer (NEU), Barrow (BRW), Samoa (SMO), Trinidad Head (THD), Cape Grim (CGR) and continental boundary layer: Southern Great Plains (SGP), Bondville (BND), Pallas (PAL) and Hohenpeissenberg (HOP). Many of

Table 3. Observational data sets on size-resolved number concentrations used in the evaluation of the global aerosol microphysics models. When comparing to the CPC measurements, we derive from the models particle concentrations larger than 3, 10 and 14 nm. These size thresholds correspond to the cut-off diameters for the different type of particle counter used in the measurements at each site.

Data set	Environment	Instrument	Quantity compared	Location	Data duration
GAW-WDCA	Free Trop.	CPC	N_{10} , N_{10} , N_{14}	JFJ, MLO, SPO	11, 24, 25 yr
GAW-WDCA	Marine BL	CPC	N_{10} , N_{14} , N_{14} , N_{14} , N_{14} , N_3	MHT, NEU, BRW, SMO, THD, CGR	6, 13, 31, 20, 5, 7 yr
GAW-WDCA	Cont'l BL	CPC	N_{10} , N_{14} , N_{10} , N_3	SGP, BND, PAS, HOP	11, 13, 6, 10 yr
EUSAAR	Nordic/Baltic BL	D/SMPS	N_{30} , N_{50} , N_{100} , size dis	ASP, BIR, SMR, PAL, PLA, VHL	2 yr (2008/09)
EUSAAR-GUAN	C. Europe BL	D/SMPS	N_{30} , N_{50} , N_{100} , size dis	BOS, HPB, KPO, OBK, MPZ, WAL	2 yr (2008/09)
EUSAAR	W. Europe BL	D/SMPS	N_{30} , N_{50} , N_{100} , size dis	CBW, HWL, MHT, JRC	2 yr (2008/09)
EUSAAR	Mediterranean BL	D/SMPS	N_{30} , N_{50} , N_{100} , size dis	FKL	2 yr (2008/09)
EUSAAR	Arctic BL	D/SMPS	N_{30} , N_{50} , N_{100} , size dis	ZEP	2 yr (2008/09)
LACE campaign	C. Europe BL/FT	CPC,PCASP	N_5 , N_{15} , N_{120}	Over eastern Germany	summer 1998
Heintzenberg	marine BL	DMPS/APS	sub- μm size dis	75° S to 90° N	30 yr
Clarke	marine BL/FT	u-CPC	N_3	Pacific and S. Ocean	10+ yr

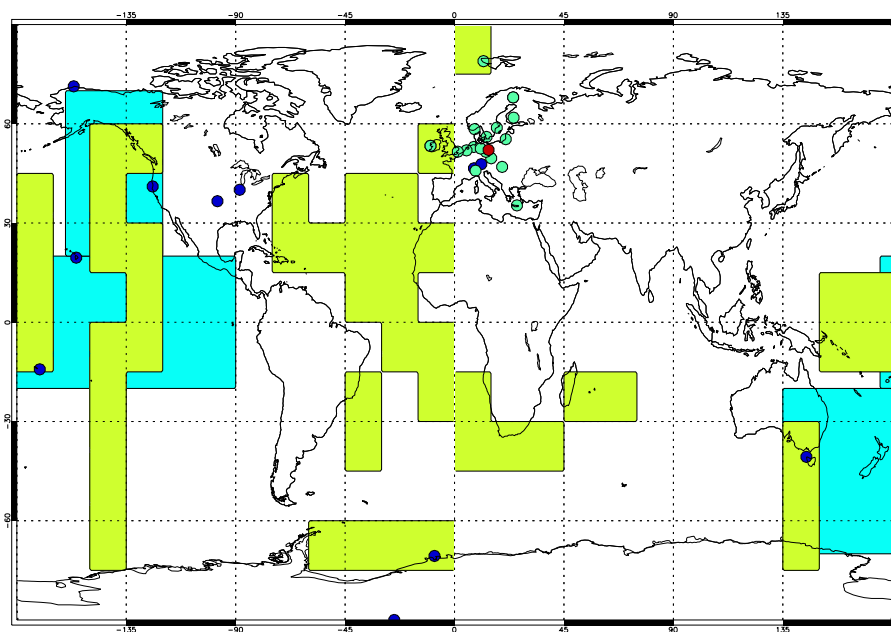


Figure 5. Global map indicating the locations of the measurement data sets shown in Table 3. Coloured circles show GAW-WDCA stations (blue), EUSAAR/GUAN supersites (aqua) and the location of the LACE 98 field campaign (red). The aqua boxed regions indicate where the aircraft field campaign measurements compiled in Clarke and Kapustin (2002) were made. The yellow boxed regions show the locations of the cruise campaign measurements compiled by Heintzenberg et al. (2000). When comparing to the measurements, each of the models was sampled based on a mask or interpolation to these locations.

these sites have several decades of data available which can be used to establish trends in aerosol concentration (e.g. Asmi et al., 2013). In this study, we compare to multi-annual means and standard deviations over the monthly-mean data over the number of years listed in Table 3. The total number of years of data used, and the size thresholds for the CPC at each site are shown in Table 3. The four original NOAA baseline aerosol monitoring stations (SPO, BRW, SMO, MLO) have operated since the 1970s and are described by Bod-

haine (1983). Further information on these and the other sites can be found in Collaud Coen et al. (2013) and Asmi et al. (2013).

– *European Supersites for Atmospheric Aerosol Research (EUSAAR)*

EUSAAR was a European project which established a coordinated network of 20 aerosol supersites (Philippin et al., 2009) which are now supported by the ACTRIS initiative (Aerosols, Clouds, and Trace gases Research InfraStructure Network, <http://www.actris.net>).

Each of the supersites is equipped with differential or scanning mobility particle sizers (DMPS/SMPS) to measure particle size distributions following standardised protocols for instrument maintenance and measurement procedures (Wiedensohler et al., 2012). Asmi et al. (2011) compiled the EUSAAR measured size distribution data sets over 2008/2009 and combined them with additional concurrent measurements from the German Ultrafine Aerosol Network (GUAN) which also had DMPS/SMPS instruments measuring sub- μm aerosol size distributions (Birmili et al., 2009). The general findings of the Asmi et al. (2011) study were that central European sites had strong unimodal size distributions with relatively low CCN variability, whereas Nordic and western European sites have lower concentrations, were more variable and often bimodal with distinct Aitken and accumulation modes. We compare the models to the climatological size distributions at each site from Asmi et al. (2011), and group them into five types – Nordic and Baltic: Aspreveten (ASP), Birkenes (BIR), Hyytiälä (SMR), Pallas (PAL), Preila (PLA) and Vavihill (VHL); central Europe: Bosel (BOS), Hohenpeissenberg (HPB), K-Puzsta (KPO), Kosetice (OBK), Melpitz (MPZ), Waldhof (WAL); western Europe: Cabauw (CBW), Harwell (HWL), Mace Head (MHT); Mediterranean: Ispra (JRC), Finokalia (FKL); and Arctic: Zeppelin (ZEP).

– *The Lindenberg Aerosol Characterization Experiment 1998 (LACE 98)*

The LACE 98 campaign (Petzold et al., 2002) took place over eastern Germany during summer 1998 with a range of airborne aerosol measurements made to characterise aerosol properties over central Europe. The aircraft instrumentation deployed in LACE 98 included three CPCs measuring total integral particle concentrations (with different lower size limits) and Passive Cavity Aerosol Spectrometer Probe (PCASP) measurements of the particle size distribution between 0.1 and 3 μm dry diameter. Further work to analyse and process these measurements led to median and 25th/75th percentile profiles of N_5 , N_{15} and N_{120} on a 1 km vertical grid (see Lauer et al., 2005) that have been used to evaluate size-resolved particle concentrations in the boundary layer and free troposphere, as simulated by global aerosol microphysics models. Note that when comparing to this data set, each model's number concentrations are at ambient temperature and pressure to be consistent with the observed profiles.

– *30 yr of ship-borne aerosol measurements*

Marine boundary layer particle concentrations and number size distribution measurements have been compiled into a global climatological data set (Heintzenberg et al., 2000). The data set brings together measurements

from several field campaigns in many regions including the Arctic (Heintzenberg and Leck, 1994; Covert et al., 1996), the central Pacific (Quinn et al., 1990, 1993, 1995, 1996), the North Atlantic (Van Dingenen et al., 1995; Leaitch et al., 1996; Raes et al., 1997) and the Southern Ocean and Antarctic (Jaenicke et al., 1992; Davison et al., 1996; Bates et al., 1998). The climatology has been used as an observational constraint for global model simulated Aitken and accumulation mode number, size and widths (e.g. Easter et al., 2004; Pierce and Adams, 2006; Spracklen et al., 2007; Trivitanurak et al., 2008; Zhang et al., 2010; Mann et al., 2012). It would be highly desirable to repeat the valuable efforts of Heintzenberg et al. (2000), and produce a similar, updated marine climatology incorporating the wide range of aerosol microphysics measurement data sets made on cruises since 2000.

– *10 yr of aircraft measurements over the Pacific and Southern Oceans*

Data from numerous field campaigns have been compiled by Clarke and Kapustin (2002) to produce climatological profiles of ultrafine particle concentrations within latitude ranges 70 to 20° S, 20° S to 20° N and 20 to 70° N. The aircraft measurements very clearly show a distinct maximum in particle concentrations in the free and upper troposphere, which has been shown to provide an important source of CCN in marine regions (Merikanto et al., 2009). Note that when comparing to this data set, each model's number concentrations are converted to standard temperature and pressure to be consistent with the observed profiles.

3.2.1 Total particle number concentrations at GAW sites

Figure 6 shows a scatter plot of modelled annual mean particle number concentrations against the multi-year annual mean from the observations at each site. The model values are simulated concentrations of particles larger than the cut-off diameter used by the CPC at each measurement site (3, 10 or 14 nm, see Sect. 2.3 and Table 3). The vertical whiskers indicate the range over the central 8 models, whereas the horizontal whisker shows the standard deviation over the annual-means over the several years of measurements (see Table 3).

The central-model mean represents the spatial variation of the annual mean particle concentrations well with a Pearson correlation coefficient (R) of 0.96 and normalised mean bias (b) of -0.21 , and is within a factor 2 of the observations at all 13 sites. However, as seen in Sect. 3.1, particle concentrations are rather diverse among the different models. For example, at Pallas and Mace Head, the central model diversity is about a factor of 5. The three FT sites (Jungfraujoch, Mauna Loa and South Pole) have lower diversity but still it is around a factor 2 to 4. This large model diversity indicates

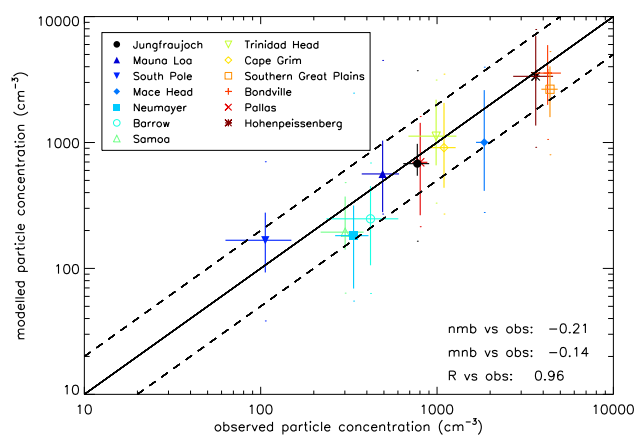


Figure 6. Simulated annual mean surface $N(D_p > 3/10/14 \text{ nm})$ against CPC observations at all 13 GAW sites. Different size thresholds are used for each site corresponding to the cut-off diameters for the CPC used (3 nm at Cape Grim, Hohenpeissenberg, 10 nm at Jungfraujoch, Mauna Loa, Mace Head, Southern Great Plains, Pallas and 14 nm at South Pole, Neumayer, Barrow, Samoa, Trinidad Head, Bondville). The model values are geometric means over the central 8 models with the vertical whisker indicating their range. For the observations, the multi-annual mean is shown with the horizontal whisker showing plus and minus the standard deviation over the several years of data shown in Table 3.

that many of the models have considerable biases against the observations. However, at only 2 of the 13 sites (Southern Great Plains and Neumayer) does the central two-thirds range not span the multi-annual mean of the measurements. It is interesting that the central models have opposite bias at the two Antarctic sites, tending to be slightly biased high at the South Pole site, but biased low at the coastal Neumayer site. Boundary layer nucleation events have been observed in a recent field campaign at Neumayer (R. Weller, personal communication, 2013) and have also been measured at the Finnish coastal Antarctic site Aboa (Asmi et al., 2010). The coastal N_{14} low bias could therefore be due to most models' nucleation parametrisations not forming new particles efficiently in the boundary layer. The other site with a low bias is Southern Great Plains in rural continental USA. As shown in Table 2, most of the model nucleation parametrisations do not generate particles efficiently in the boundary layer, and such boundary layer nucleation mechanisms have been shown to represent a substantial source of small particles in rural continental environments (e.g. Kulmala et al., 2004; Spracklen et al., 2006, 2008).

Annual cycles of total particle number at the GAW sites are shown in Figs. 7–9. Considering the free troposphere sites, Mauna Loa in Hawaii (19°N) has no significant seasonal variation (Fig. 7b), whereas Jungfraujoch (Fig. 7a) and South Pole (Fig. 7c) have clear seasonal cycles with summer total particle concentrations higher than in winter by factors of about 2 and 10 respectively. At South Pole, this seasonal

cycle in N_{14} is likely driven by the strong seasonal variations in DMS seawater concentration and photochemistry although seasonal transport effects are also a likely contributor (Bodhaine et al., 1986). The central model mean captures the South Pole seasonal cycle in N_{14} very well ($R = 0.95$) albeit with a slight high bias ($b = 0.39$, as seen in Fig. 6), which worsens during winter. At Jungfraujoch, the seasonal cycle likely reflects stronger photochemistry during the summer, leading to higher gas phase H_2SO_4 concentrations or organic vapours which will tend to give higher nucleation rates at the site (Boulon et al., 2010). Increased pollution and transport from lower altitudes during the summer will also be an important influence. The models also show elevated N_{10} during summer at Jungfraujoch, although the central-8 mean model shows a moderate low bias ($b = -0.13$) over the full year.

For the marine boundary layer GAW sites, the strong seasonal cycle at the Antarctic coastal site Neumayer (Fig. 8b) is well captured by the multi-model mean ($R = 0.92$), with a low bias (as seen in Fig. 6) apparent throughout the year ($b = -0.51$). However, at the Alaskan site Barrow, although the central-mean model compares fairly well with observations on the annual mean, the seasonal cycle is not well captured ($R = 0.22$), with the models highest in May when the observations show a local minimum (Fig. 8c). Simulating Arctic aerosol is challenging because of the complex factors that lead to the formation of the Arctic haze observed in late winter and early spring (e.g. Quinn et al., 2002). The poor model performance is consistent with the findings of previous studies, which have highlighted the importance of seasonal variations in scavenging processes and local nucleation (Browse et al., 2012, 2013; Bougeois and Bey, 2011; Garrett et al., 2010; Huang et al., 2010; Korhonen et al., 2008a; Liu et al., 2011). At Mace Head (Fig. 8a), simulated particle concentrations are biased low ($b = -0.48$) as seen on the annual mean in Fig. 6, and the models also do not capture the observed concentration peaks in May and September ($R = 0.22$). At Cape Grim (Fig. 8f), the N_3 seasonal cycle (over all air masses) is fairly flat despite there being an established strong influence of DMS on the N_3 and CCN seasonal cycle from the marine air mass sector (e.g. Ayers and Gras, 1991; Korhonen et al., 2008b). At the other two sites: Samoa in the Pacific (Fig. 8d) and Trinidad Head on the US California coast (Fig. 8e), the observations show no clear seasonal cycle, but the models have highest concentrations in late summer at Trinidad Head, which is not seen in the observations.

At the continental boundary layer sites (except for Southern Great Plains), the central-8 model mean agrees well with the observations on the annual mean (Fig. 6). The weak seasonal N_{14} variation at Bondville (Fig. 9b) and Hohenpeissenberg (Fig. 9d) is also well captured by the central-8 model mean, although the models predict a peak at Hohenpeissenberg during March that is outside the observed multi-year mean plus or minus standard deviation (1995 to 2005). At Pallas (Fig. 9c), the observations show a strong

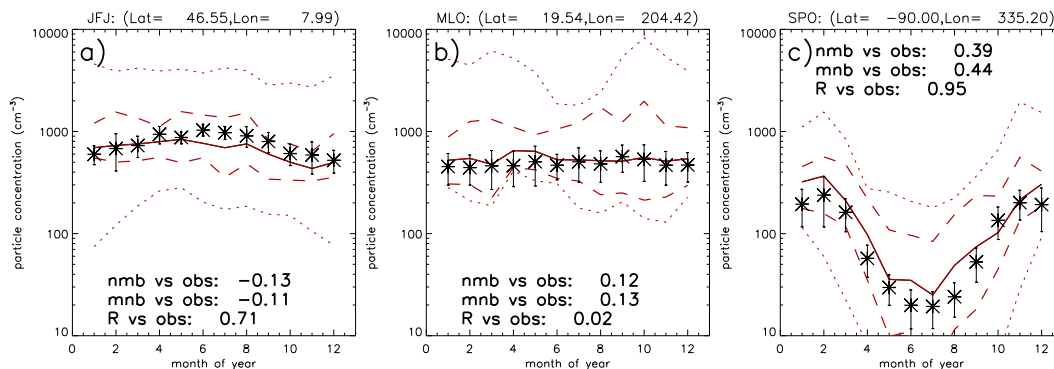


Figure 7. Simulated annual cycle in surface $N(D_p > 10 \text{ nm}/14 \text{ nm})$ against CPC observations at free troposphere GAW sites Jungfraujoch (10 nm), Mauna Loa (10 nm) and South Pole (14 nm). The solid line is the geometric mean over the central two-thirds of models in each month, with the dashed lines the minimum and maximum over those central-8. The dotted line shows the minimum and maximum over all 12 models. The error bars on the observations indicate the standard deviation over the several years of data shown in Table 3.

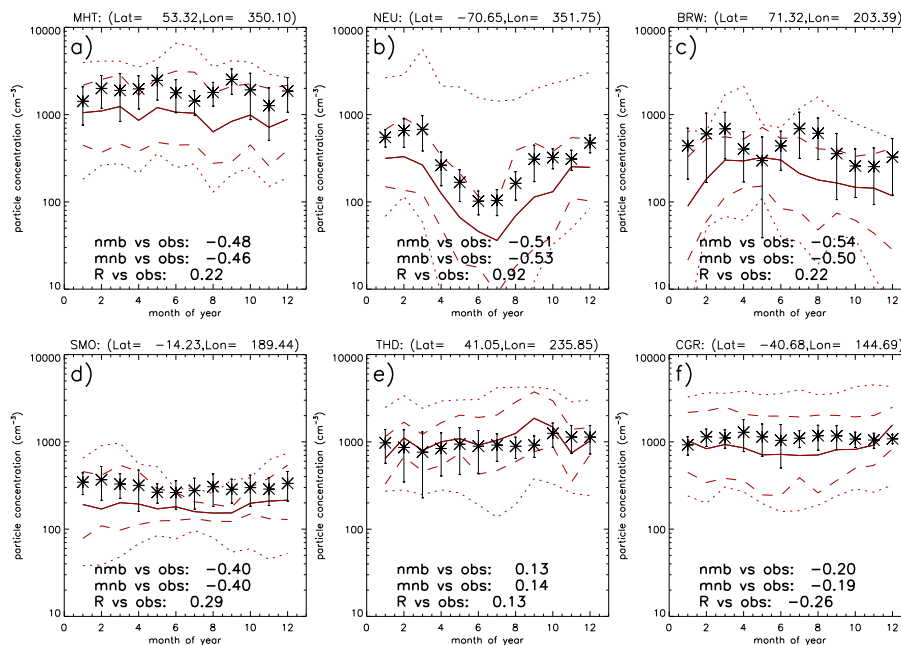


Figure 8. Simulated annual cycle in surface $N(D_p > 10 \text{ nm}/14 \text{ nm}/3 \text{ nm})$ against CPC observations at marine boundary layer GAW sites Mace Head (10 nm), Neumayer (14 nm), Barrow (14 nm), Samoa (14 nm), Trinidad Head (14 nm) and Cape Grim (3 nm). The solid line is the geometric mean over the central two-thirds of models in each month, with the dashed lines the minimum and maximum over those central-8. The dotted line shows the minimum and maximum over all 12 models. The error bars on the observations indicate the standard deviation over the several years of data shown in Table 3.

seasonal variation, with monthly mean N_{10} concentrations around a factor of 3 higher in spring and summer than in winter. The central-8 mean model particle concentration peaks in spring rather than summer, and the variation is weaker than in the observations (by about a factor 2). Spracklen et al. (2010) found that including a boundary layer nucleation mechanism improves the seasonal variation in particle concentrations at continental sites, particularly at Pallas, although simulated concentrations tend to peak in spring whereas the observations show a peak in summer. Secondary organic aerosol

has been shown to strongly influence new particle formation rates (e.g. Metzger et al., 2010) and Scott et al. (2014) examined the seasonal cycle in N_{80} at Hyytiälä and Pallas, showing that the observed summertime peak in particle concentrations could be much better reproduced in their model when an organic-mediated nucleation parametrisation was used.

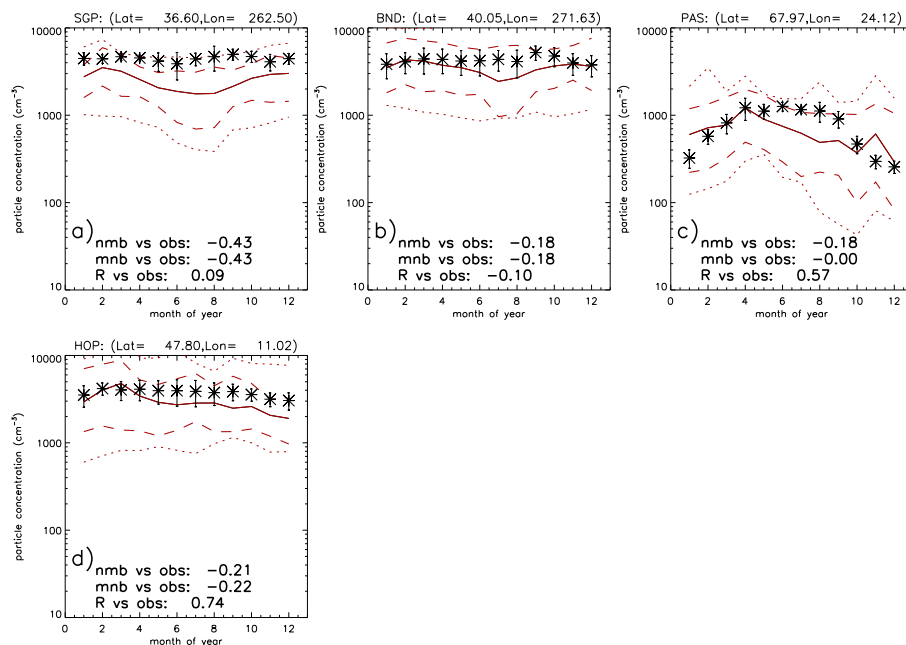


Figure 9. Simulated annual cycle in surface $N(D_p > 10 \text{ nm}/14 \text{ nm}/3 \text{ nm})$ against CPC observations at continental boundary layer GAW sites Southern Great Plains (10 nm), Bondville (14 nm), Pallas (10 nm) and Hohenpeissenberg (3 nm). The solid line is the geometric mean over the central two-thirds models in each month, with the dashed lines the minimum and maximum over those central-8. The dotted line shows the minimum and maximum over all 12 models. The error bars on the observations indicate the standard deviation over the several years of data shown in Table 3.

3.2.2 Size-resolved number concentrations at EUSAAR/GUAN sites

Figure 10 compares the mean of the central two-thirds models with observed size-resolved particle concentrations at 17 low-altitude sites in the EUSAAR/GUAN network (Asmi et al., 2011). The seven sites above 900 m altitude were omitted as these tend to be affected by local factors, for example daily variations from polluted air masses from lower altitudes (Asmi et al., 2011), which is unlikely to be captured at the coarse resolution used in the global models.

Asmi et al. (2011) analysed the EUSAAR/GUAN observations, presenting percentiles of the size distributions and size-resolved number concentrations from the hourly measurements. However, since the model results are monthly means, i.e. an arithmetic mean over values at all time steps, we compare here against an arithmetic mean over the hourly observations (A. Asmi, personal communication, 2012). In the full size distribution comparisons (Figs. 15–17), the median observed values are also shown for reference (from Asmi et al., 2011). At most sites, the median and mean observed values are similar at sizes larger than 100 nm, but at Aitken mode sizes (10 to 100 nm), the median is much lower than the mean, suggesting that it is temporally the more variable of the two modes.

Simulated N_{30} (Fig. 10a) is very diverse among the central 8 models at most of these European sites, more so than for

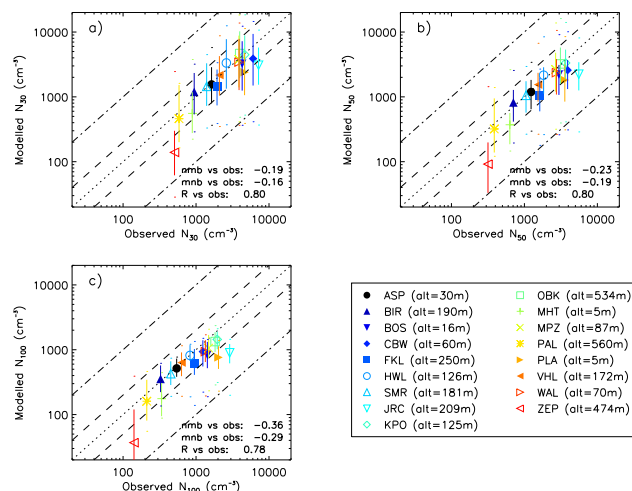


Figure 10. Simulated annual mean surface $N(D_p > 30 \text{ nm}$ (a), $> 50 \text{ nm}$ (b) and $> 100 \text{ nm}$ (c), against those measured by SMPS/DMPS instruments at 17 of the EUSAAR/GUAN sites (excludes those at high altitude, taken as above 900 m altitude). Model values are the geometric mean of the central two-thirds model annual-means, with the vertical whiskers indicating the minimum and maximum values over those central 8. Observed values are arithmetic means over the hourly measurement data (A. Asmi, personal communication, 2012).

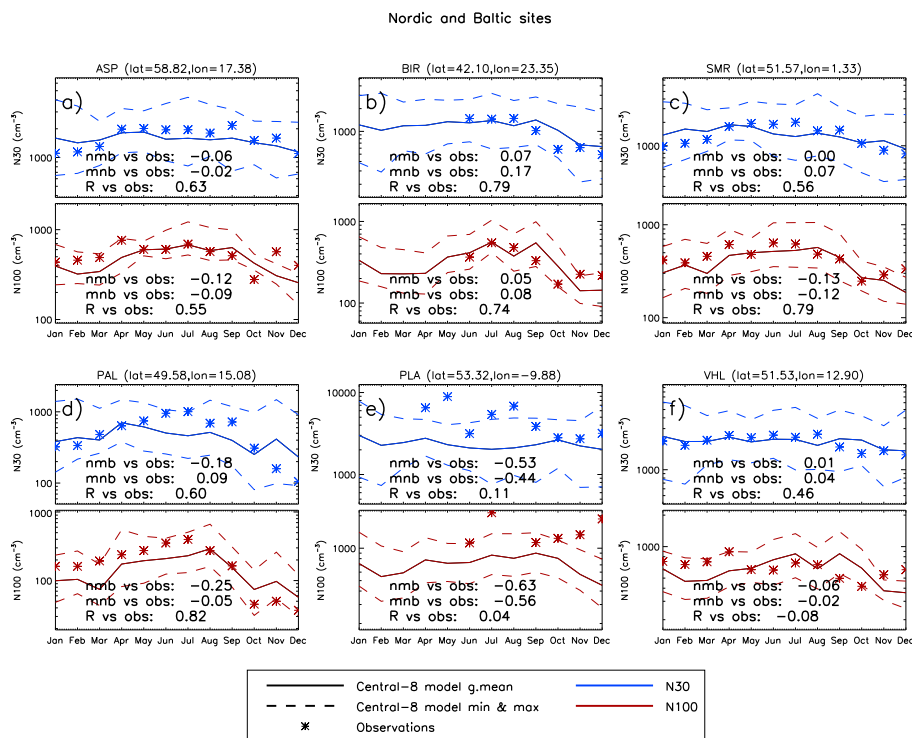


Figure 11. Annual cycle of simulated $N(D_p > 30 \text{ nm})$ (blue), and $N(D_p > 100 \text{ nm})$ (red) against those measured by SMPS/DMPS instruments (asterisks) at the six Nordic and Baltic EUSAAR sites: Aspvetren (ASP, **a**), Birkenes (BIR, **b**), Hyytiälä (SMR, **c**), Pallas (PAL, **d**), Preila (PLA, **e**) and Vavihill (VHL, **f**). Model values are the geometric mean (solid) and min/max (dashed) over the central-8 model monthly mean values. Observed values are arithmetic means over the hourly measurement data (A. Asmi, personal communication, 2012).

N_{100} (Fig. 10c), more than 50% of their mean at many sites. However, at the Arctic site Zeppelin N_{30} diversity is lower than for N_{100} , consistent with the spatial distribution in diversity seen in Fig. 2. Despite this large model diversity however, as seen for the comparisons to the CPC measurements (Fig. 6), the central two-thirds model mean generally compares quite well with the observations on the annual-mean, with $R = 0.80, 0.80, 0.78$ and $b = -0.19, -0.23, -0.36$ for N_{30}, N_{50}, N_{100} respectively over the full set of sites. At all sites, except Ispra (which is strongly influenced by local pollution sources) and the Arctic site Zeppelin, the central mean is within a factor of 2 of the observations for all three size ranges on the annual mean. Aside from Zeppelin, the N_{100} particle concentrations have lower diversity and also generally compare better with the measurements than N_{30} and N_{50} . This suggests that CCN concentrations (which can be approximated by N_{50}) are more diverse among the models than are aerosol optical properties (which are mainly influenced by particles larger than 100 nm). It is noticeable however that Ispra and Preila have a stronger low bias at N_{100} than N_{30} .

Simulated size-resolved number concentrations across the full annual cycle are compared to the EUSAAR/GUAN observations in Fig. 11 (Nordic and Baltic sites), Fig. 12 (western European, Mediterranean and Arctic sites) and Fig. 13

(central European sites). Figure 14 summarises these seasonal cycle comparisons in terms of the winter and summer bias (model divided by observed) for each site.

From Fig. 10 we have seen that, on that annual mean, at the Nordic and Baltic sites, the central two-thirds mean is in good agreement with the observations for N_{30}, N_{50} and especially N_{100} . However, the seasonal cycle is less well captured at these sites (Fig. 11). In particular, for several of the sites, the central-8 mean model N_{30} is mostly biased high during the winter (see also Fig. 14) and biased low during the summer. This discrepancy is similar to the total particle concentration comparison at Pallas (Fig. 9c), with the multi-model value having a fairly flat seasonal variation whereas the observations show concentrations at least a factor of 2 higher in summer than winter. By contrast, the central-8 model mean captures the seasonal variation in N_{100} much better. For many of the models (see Table 2), binary homogeneous nucleation is the only new particle formation mechanism, and this may explain the poor seasonal variation of N_{30} in the models. As already noted, Spracklen et al. (2010) found that, in model simulations with only binary nucleation, although adjustments to the assumed size distribution for primary emissions could reproduce observed annual mean concentrations of the finest particles at Pallas, better agreement with the observed

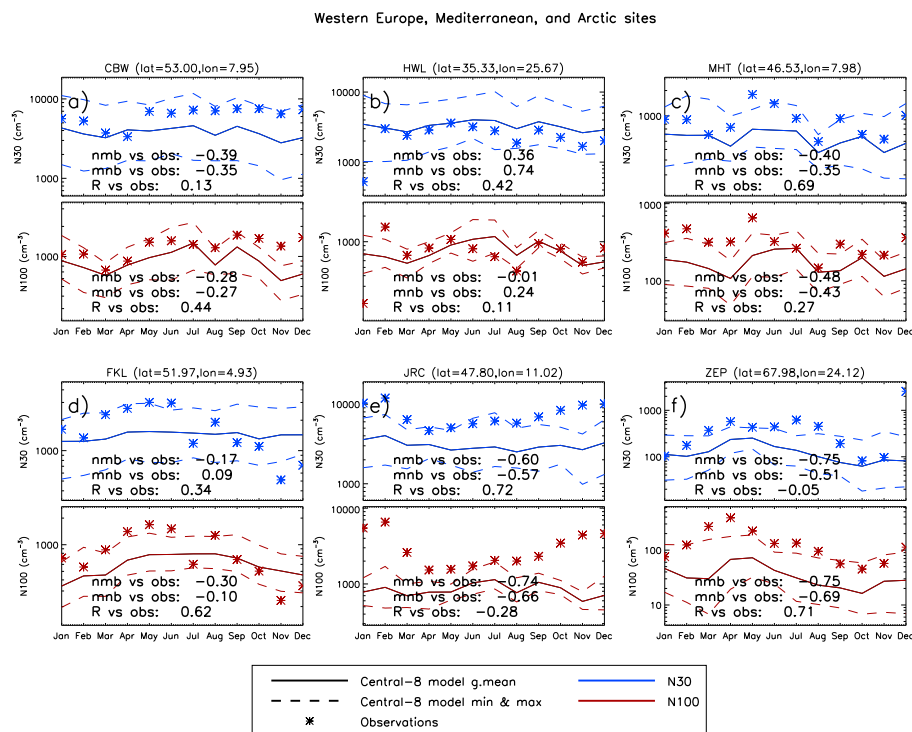


Figure 12. Annual cycle of simulated $N(D_p > 30 \text{ nm})$ (blue) and $N(D_p > 100 \text{ nm})$ (red) against those measured by SMPS/DMPS instruments (asterisks) at the six EUSAAR sites classified as western Europe: Cabauw (CBW, a), Harwell (HWL, b), Mace Head (MHT, c), Mediterranean: Finokaklia (FKL, d), Ispra (JRC, e), or Arctic: Zeppelin (ZEP, f). Model values are the geometric mean (solid) and min/max (dashed) over the central-8 model monthly (arithmetic) mean values. Observed values are arithmetic means over the hourly measurement data (A. Asmi, personal communication, 2012).

seasonal cycle could be achieved by also including a nucleation mechanism effective in the boundary layer.

At the Arctic EUSAAR site (Fig. 12f), the observations show that there is a substantial shift in the particle size distribution in the winter and early spring compared to the rest of the year. High accumulation mode concentrations (N_{100}) are observed between January and April (the Arctic haze season) whereas Aitken mode particles (N_{30}) are highest during summer. In contrast, for the central-8 mean model, N_{30} and N_{100} have very similar seasonal cycles. Possible reasons for this model–observation discrepancy could be due to the models not representing seasonal changes in long-range transport and the models' limited representation of scavenging by drizzle, which has also been shown (Browse et al., 2012) to be an important control for simulated Arctic aerosol during summer. Local particle sources (missing in most models) have also been shown to exert important controls on Arctic aerosol properties, for example marine primary organic aerosol (e.g. Leck and Bigg, 2005) or boundary layer new particle formation (Browse et al., 2013).

At Harwell (Fig. 12b), the central-8 mean model N_{30} and N_{100} agree quite well with the observations ($R = 0.42, 0.11$ and $b = 0.36, -0.01$). At Cabauw (Fig. 12a) the central-8 mean agrees quite well with N_{100} ($R = 0.44, b = -0.28$),

whereas at Mace Head (Fig. 12c) the models strongly underpredict N_{100} ($b = -0.48$) with observed peaks in December, February, May and September not captured by any of the central models ($R = 0.27$). As seen for most of the Nordic and Baltic sites, at both Cabauw and Mace Head, the central-8 mean model underestimates N_{30} during summer. Mace Head has been shown to be influenced by coastal new particle formation events (e.g. O'Dowd et al., 1998) which will not be well represented in the global models, and this could explain some of the strong underprediction of particle concentrations during the summer. By contrast, new particle formation episodes are much less frequent at Harwell, occurring on only around 5 % of observation days (Charron et al., 2007).

We saw in Fig. 10 that the models underpredict particle concentrations at Ispra for all three size ranges. In Fig. 12e, it is clear that the low bias at this site is apparent throughout the year, with the accumulation mode (represented by N_{100}) particularly strongly underestimated ($b = -0.74$, with even the highest of the central models being too low). Very high N_{100} is observed during winter, likely reflecting local boundary layer trapping of nearby pollution sources adjacent to steep orography, which will tend to be poorly represented at the coarse resolution of the global models. Another source of error in N_{100} could be that most of the models do not represent

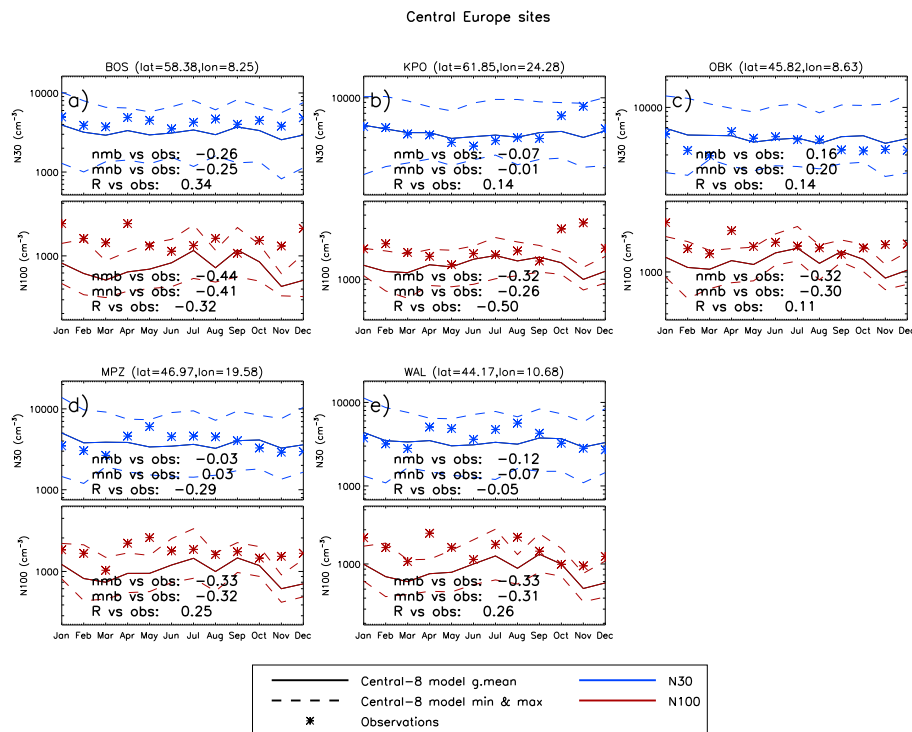


Figure 13. Annual cycle of simulated $N(D_p > 30 \text{ nm})$ (blue) and $N(D_p > 100 \text{ nm})$ (red) against those measured by SMPS/DMPS instruments (asterisks) at the five low-altitude EUSAAR/GUAN sites classified as central European: Bosel (BOS, a), K-Pusztá (KPO, b), Kosetice (OBK, c), Melpitz (MEL, d) and Waldhof (WAL, e). Model values are the geometric mean (solid) and min/max (dashed) over the central-8 model monthly (arithmetic) mean values. Observed values are arithmetic means over the hourly measurement data (A. Asmi, personal communication, 2012).

nitrate aerosol, which efficiently partitions into the particle phase during the colder winter months (e.g. Adams et al., 1999), although this alone is unlikely to explain such a large N_{100} discrepancy.

At the five central European sites (Fig. 13), the central-8 model mean N_{30} compares quite well to the observations over the annual cycle. However, at several of these central European sites (Bosel, Kosetice, Melpitz, Waldhof), the observed N_{30} shows a local maximum in April or May that is not seen in the models. For N_{100} there is quite good agreement at the five sites during summer, with a weak low bias, but there is a much larger low bias during winter at many of the sites, as was also seen at Ispra.

An overview of the summer and winter N_{30} , N_{50} and N_{100} biases against the measurements is shown in Fig. 14. As seen for the annual mean comparisons, aside from Ispra (JRC) and Zeppelin (ZEP), modelled N_{100} is generally in good agreement with the observations during summer. During winter however, modelled N_{100} is biased low at many sites, which could indicate missing number sources at those sizes or insufficient growth from smaller sizes. Aquila et al. (2011) evaluated a global aerosol microphysics model against a different set of European size distribution measurements (Van Dingenen et al., 2004) and also found that, in the accumula-

tion mode, number concentrations had a strong low bias during winter but were in much better agreement during summer. Nitric acid partitions into the particle phase during winter forming an important component of the sub- μm particle mass (e.g. Adams et al., 1999), and this may account for some of the missing mass. Tsigaridis et al. (2014) find a general underprediction of wintertime organics which will also contribute to this model accumulation mode low bias.

For N_{30} the agreement is also reasonable, however the median model often has a high bias during winter and a low bias during summer. This was also seen for the total particle concentrations comparison for Pallas (see Fig. 9c) with a flat seasonal cycle in the models whereas the observations showed greatly enhanced concentrations during the summer. A factor that could explain some of this bias is that many of the models may have used too small particle size (when characterising primary emissions) leading to a high bias in particle number emissions derived from the emitted mass flux. This would lead to too many particles in the Aitken sizes and too few in the accumulation mode, which would also be consistent with the N_{30} and N_{100} biases seen at many of these continental sites. There is clear need for improved understanding of primary and secondary particle sources, and better constraints for model assumptions for the size of primary emitted

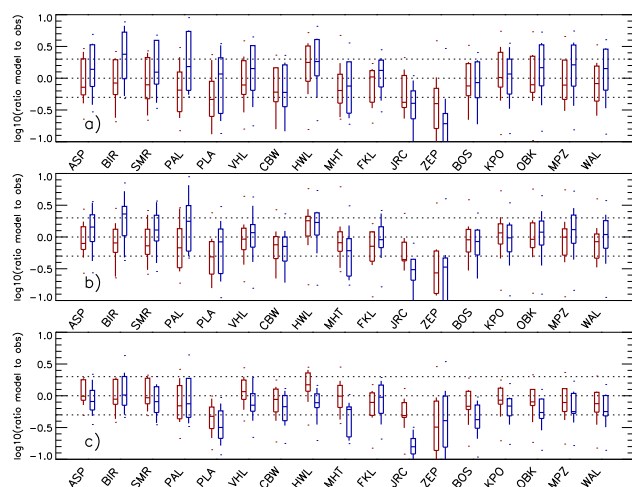


Figure 14. Box plots indicating the median, 25th and 75th percentiles of model to observation ratio for (a) N_{30} , (b) N_{50} and (c) N_{100} at the 17 low-altitude EUSAAR/GUAN sites. Winter and summer values are shown in blue and red respectively. The plots show the base-10 logarithm of the ratio, so a value of 1.0 means a factor of 10 high bias and a value of -1.0 means a factor of 10 low bias. The dashed lines indicate where the model is within a factor of 2 of the observations.

particles. Future studies are needed to carry out more detailed comparisons of the model size distributions to the new measurements from the EUSAAR/GUAN supersites. For example these could examine probability density functions over high temporal resolution model and observed data sets and apply cluster analysis techniques (e.g. Beddows et al., 2009), such as have already been applied to the EUSAAR/GUAN sites (Beddows et al., 2014).

3.2.3 Sub- μm size distributions at European surface sites

Figures 15–17 compare simulated particle size distributions against the SMPS/DMPS measurements at the EUSAAR and GUAN sites. The upper panels (a–f) are for summer with the lower panels (g–l) showing winter. Model size distributions are derived from the different complexity models following the methodology described in Sect. 2.3. When comparing the multi-model size distribution to the measurements, one should compare the red solid line (central model geometric mean) to the black solid line, which shows the arithmetic mean over the hourly observations for that season. The observed median (dot-dashed black) and 5th to 95th percentile ranges (grey shading) as published by Asmi et al. (2011) are also shown for reference.

Where there is a large difference between the observed median and mean size distributions, it is indicative that the site experiences large temporal variability in particle number concentrations. Many of the sites show such large variability in the Aitken size range, and at some sites (e.g. Hyttiala,

SMR) this may indicate that nucleation events (e.g. Kulmala et al., 2004) frequently affect that part of the size range. Such variability can also exist when a site experiences diverse air mass types. For example, at Mace Head (MHT) there is large variation across the Aitken and accumulation size range, which is likely due to the site experiencing episodes of polluted air from mainland Europe as well as the more frequent clean air from the North Atlantic.

At Nordic and Baltic EUSAAR sites, in summer the multi-model geometric-mean size distribution (red line) compares well to the observations (solid black line) in the accumulation mode (except for Preila) but tends to be biased low in the Aitken size range (Fig. 15). At most of these sites, the maximum over the central-8 models (dashed line) compares better to the observed size distribution below 200 nm dry diameter. This indicates that some models are better able to capture the size distribution at these sites and sizes. In winter however, the multi-model mean overestimates the concentration of Aitken particles and the central-8 model maximum is biased very high (by up to a factor 10). By contrast, the models' wintertime accumulation mode has a strong low bias, which can be interpreted either as a substantial underprediction of particle growth or as an underprediction of particle sources at these sizes. To grow these particles sufficiently to match the observations however, would require about a factor 2 increase in diameter, equivalent to a factor 8 increase in mode mass, suggesting that missing number is an important component.

At the central European sites (Fig. 16a–f), there is good agreement between the modelled and observed accumulation mode in summer. The summertime Aitken mode low bias seen at Nordic and Baltic sites is much less in central Europe, although the multi-model mean is still slightly low. In wintertime (Fig. 16g–l), the Aitken mode compares quite well with, if anything, a slight high bias at some sites. However, the wintertime accumulation mode low bias seen in the Nordic and Baltic sites is very evident here.

At Harwell during summer (Fig. 17b) the multi-model mean compares very well with the observations across the entire size range, but in winter (Fig. 17h) there is much too little number (and mass) in the accumulation mode and too much number below 200 nm dry diameter. At Mace Head and Cabauw, during summer (Fig. 17a and c), although there is good agreement above 200 nm dry diameter, there is a strong underestimation of number in the Aitken mode size range (10 to 100 nm) at both sites, although the size of the Aitken mode peak is well represented. The summertime Aitken low bias, and the high variability in the Aitken size range (difference between the solid and dot-dashed black lines in Fig. 17a), would be consistent with biogenic nucleation events occurring during summer as observed frequently at the coastal Mace Head site (e.g. O'Dowd et al., 2007). At Cabauw however, the median and mean size distribution are similar across the size range, suggesting that a more uniform particle source is missing or underestimated in the models. Also,

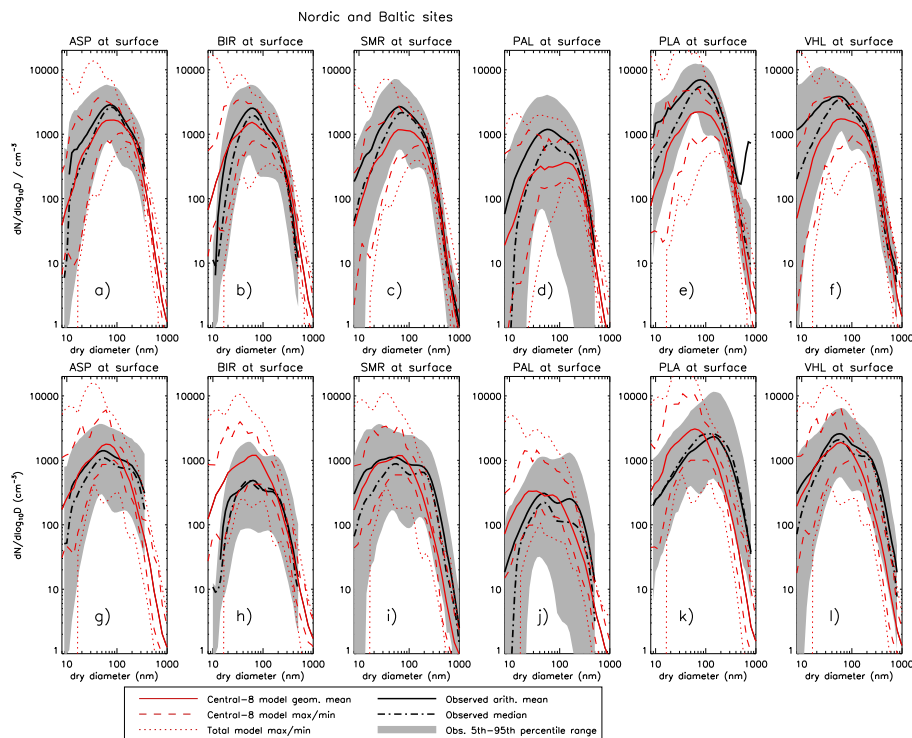


Figure 15. Summer (a–f) and winter (g–l) multi-model simulated size distributions against DMPS/SMPS measurements at the six Nordic/Baltic EUSAAR sites: Aspvreten (ASP), Birkenes (BIR), Hyttiala (SMR), Pallas (PAL), Preila (PLA) and Vavihill (VHL). Shown are the central-8 model geometric means (red solid), central-8 model maximum/minimum (red dashed) and all-12 model minimum/maximum (red dotted) of the June–July–August (arithmetic) mean size distributions at each site. Observed values (black solid line) are arithmetic means over the hourly measurement data (A. Asmi, personal communication, 2012). The published (Asmi et al., 2011) median (black dot-dashed) and 5th to 95th percentile range (grey shading) over the hourly measurement data are also shown for reference.

considering Fig. 17g and i, whereas Mace Head compares better in the Aitken mode during summer, the Cabauw Aitken mode low bias is present in both seasons, suggesting that the cause of the model–observation discrepancy may be different between the two sites. As noted in the discussion around Fig. 12b, new particle formation events are rather infrequent at Harwell (Charron et al., 2007), and the better agreement there is consistent with such secondary particle production not being well captured by the models.

At the Arctic site Zeppelin, during summer (Fig. 17f), the multi-model mean has a low bias across the size range, although the models do capture the observed shape of the size distribution with the Aitken mode peak being around a factor 2 higher than the accumulation mode peak. During winter however (Fig. 17l), the observations suggest that the Aitken peak is a factor 10 higher than the accumulation mode peak, whereas the multi-model mean predicts the ratio less than 2. The observed 5th to 95th percentile range suggests that very high observed particle concentrations are sporadically observed at around 20 nm dry diameter, which indicates a strong local nucleation or ultrafine particle source, which none of the central models capture.

At the Mediterranean site Finokalia, the multi-model mean compares well with the observations in both summer and winter (Fig. 17d and j). The good agreement in the accumulation mode at this site is consistent with the model wintertime accumulation mode low bias seen at other sites being caused by semi-volatile organics or nitrate since the warmer conditions at Finokalia will mean these species will tend not to partition into the particle phase there. At Ispra (Fig. 17e and k), the previously identified very strong wintertime accumulation mode low bias is clearly evident, likely due to boundary layer trapping of local pollution sources. During the summer there is a more moderate low bias across both Aitken and accumulation size particles.

3.2.4 Vertical profile of size distribution over Europe

Figure 18 compares the models against a compilation of aircraft measurements of size-resolved particle concentrations from the LACE 98 field campaign (Petzold et al., 2002). The measurements comprise vertical profiles of N_5 and N_{15} from two CPCs, and N_{120} from integrating the size distribution measured by the PCASP instrument (as presented by Lauer et al., 2005). For this comparison, the model data for

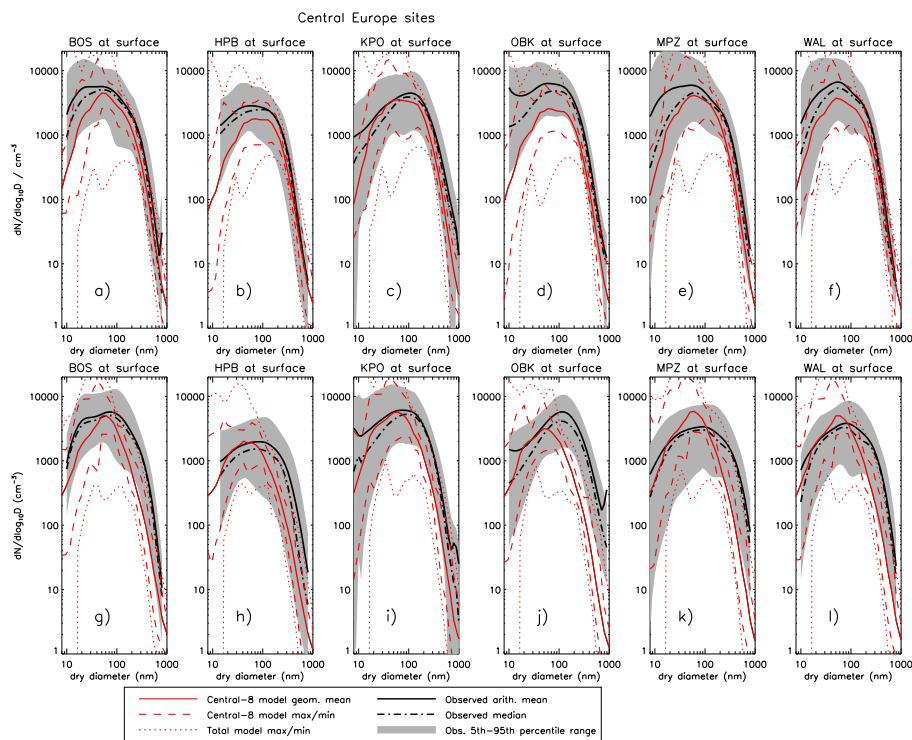


Figure 16. Summer (a–f) and winter (g–l) multi-model simulated size distributions against DMPS/SMPS measurements at the six central European EUSAAR/GUAN sites: Bosel (BOS), Hohenpeissenberg (HPB), K-Pusztá (KPO), Kosetice (OBK), Melpitz (MEL) and Waldhof (WAL). Shown are the central-8 model geometric means (red solid) central-8 model maximum/minimum (red dashed) and all-12 model minimum/maximum (red dotted) of the June–July–August (arithmetic) mean size distributions at each site. Observed values (black solid line) are arithmetic means over the hourly measurement data (A. Asmi, personal communication, 2012). The published (Asmi et al., 2011) median (black dot-dashed) and 5th to 95th percentile range (grey shading) over the hourly measurement data are also shown for reference.

August was interpolated to 14.0° N, 52.1° E, the mid-point of the relatively small region of the flights (13.5 – 14.5° N, 51.5 – 52.7° E, Lauer et al., 2005). The model vertical profiles were then interpolated onto a common pressure grid between 950 and 220 hPa.

The modelled accumulation mode particle concentrations (represented here by N_{120}) capture the vertical profile well (Fig. 18c), although throughout the lowest few kilometres most of the models have a considerable low bias ($b = -0.48$ for the central two-thirds model mean). For particle concentrations at the smallest sizes (N_5 and N_{15}), the central two-thirds model mean is also biased low in the boundary layer, but is biased high (around a factor of 5) in the free and upper troposphere. Within the boundary layer the observations show a sharp increase in N_5 and N_{15} towards the surface that is not captured by the central models, likely due to nucleation being underestimated. The observations also suggest only a weak peak in N_5 in the upper troposphere, with maximum concentrations of about 800 cm^{-3} , whereas the models predict a strong peak with a central-8 mean and range of about 2300 cm^{-3} and 900 – 9000 cm^{-3} .

3.2.5 Marine boundary layer size distributions

Marine boundary layer (MBL) particle size distribution measurements from Heintzenberg et al. (2000), based on 30 yr of field campaigns, are shown for the Southern Hemisphere (Fig. 19) and Northern Hemisphere (Fig. 20). To summarise these comparisons, in Fig. 21 we compare the models' simulated number and size in the Aitken and accumulation modes to observed values shown in Heintzenberg et al. (2000), which were derived via log-normal fits to the size distribution measurements. The data compilation is based on 15° longitude by 15° latitude averages of ship-borne measurements using Differential Mobility or Aerodynamic Particle Sizers (DMPS/APS) over several field campaigns (see Fig. 5). To derive equivalent size distributions from the models, the number concentration and representative dry diameters for each model's size class were averaged over marine grid boxes in each of the 15° by 15° regions.

The observations show that accumulation mode number concentrations are approximately symmetric across the equator, while Aitken mode particle concentrations are around a factor of 2 higher in the Southern Hemisphere than in the Northern Hemisphere. The measurements also show that

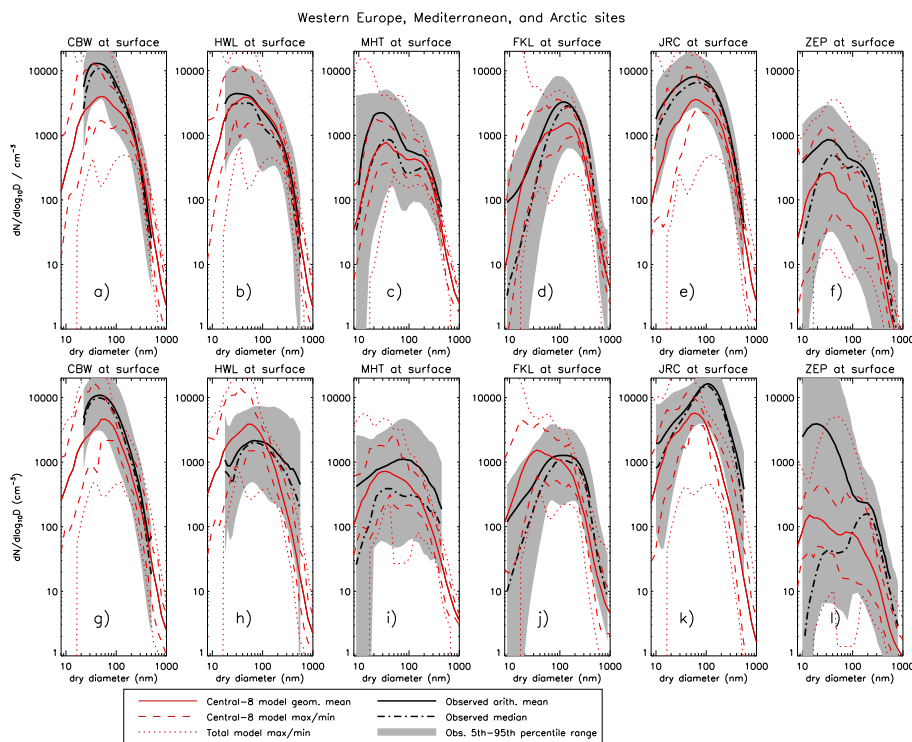


Figure 17. Summer (a–f) and winter (g–l) multi-model simulated size distributions against DMPS/SMPS measurements at the six EUSAAR sites classified as western Europe: Cabauw (CBW), Harwell (HWL), Mace Head (MHT), Mediterranean: Ispra (JRC), Finokalia (FKL) or Arctic: Zeppelin (ZEP). Shown are the central-8 model geometric means (red solid), central-8 model maximum/minimum (red dashed) and all-12 model minimum/maximum (red dotted) of the June–July–August (arithmetic) mean size distributions at each site. Observed values (black solid line) are arithmetic means over the hourly measurement data (A. Asmi, personal communication, 2012). The published (Asmi et al., 2011) median (black dot-dashed) and 5th to 95th percentile range (grey shading) over the hourly measurement data are also shown for reference.

typical sizes of both Aitken and accumulation modes are around 25 % larger in the Northern Hemisphere, implying a factor 2 higher particle volume concentration, approximately matching observations of sulfate mass.

In the Southern Hemisphere (Fig. 19), the central models capture the general variation of the boundary layer size distribution, with the observed minimum between the Aitken and accumulation modes (e.g. Hoppel et al., 1994) at around the right size, although peak concentrations in both modes are biased low by about a factor 2 south of 30° S. The shift in the Aitken–accumulation mode $dN/d\log_{10}r$ ratio is also well captured, with the Aitken mode peak stronger than the accumulation mode south of 30° S, whereas these two size distribution peaks are of similar magnitude between 30° S and the equator.

In the Northern Hemisphere (Fig. 20), the multi-model mean size distribution is rather flat, which likely indicates that the models do not agree on the position of the Hoppel gap rather than the models predicting a flat size distribution across the Aitken and accumulation size ranges. At latitudes > 30° N, the central model range of MBL number concentrations in these two modes agrees quite well with the obser-

vations, but is low biased between 0 and 30° N. The general shift in the Aitken–accumulation $dN/d\log_{10}r$ ratio is again well captured, with the two peaks approximately equal at low latitudes and the Aitken mode peak much stronger at high latitudes.

Figure 21 compares the meridional variation of N_{10} (Fig. 21a) and particle concentrations in the Aitken (Fig. 21b) and accumulation (Fig. 21c) size ranges. The comparisons show that although the general variation of the size distributions is well captured, the models predict higher MBL particle concentrations in the Northern Hemisphere than in the Southern Hemisphere whereas the observations show the reverse.

A general finding across all the models is that Aitken mode particle concentrations are underpredicted in Southern Hemisphere mid-latitudes and overpredicted in Northern Hemisphere mid-latitudes. The Southern Hemisphere low bias in Aitken mode particle concentrations has also been found in multi-model comparisons of sectional (Trivitanurak et al., 2008) and modal schemes (Zhang et al., 2010). Pierce and Adams (2006) found the bias was much reduced by using sea-spray source functions which capture the observed

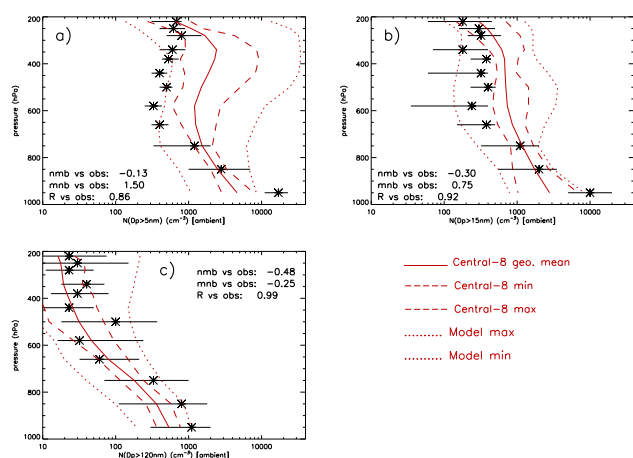


Figure 18. Summertime central-model simulated profiles of $N(D_p > 5 \text{ nm})$ (a), $N(D_p > 15 \text{ nm})$ (b), and $N(D_p > 120 \text{ nm})$ (c), over Germany against those derived from aircraft-borne CPC and PCASP measurements (asterisks) during the Lindenberg Aerosol Characterisation Experiment (Petzold et al., 2002), as presented by Lauer et al. (2005). The solid line shows the geometric mean of the central-8 models, dashed lines indicate the maximum and minimum of the central-8, while dotted lines indicate the maximum and minimum over all 12 models.

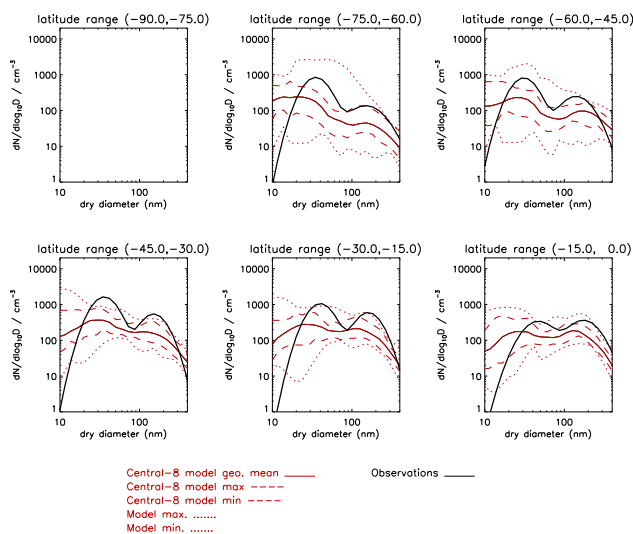


Figure 19. Southern Hemisphere annual-mean central-model simulated size distributions in the marine boundary layer averaged into 15° latitude ranges to compare against the compilation of 30 yr of cruise DMPS/APS measurements from Heintzenberg et al. (2000). The solid line shows the geometric mean of the central-8 models, dashed lines indicate the maximum and minimum of the central-8, while dotted lines indicate the maximum and minimum over all 12 models.

efficient emission at ultrafine particle sizes (e.g. Martensson et al., 2003; Clarke et al., 2006). The meridional variation of accumulation mode concentrations is better captured with good agreement in the Northern Hemisphere, but a low bias

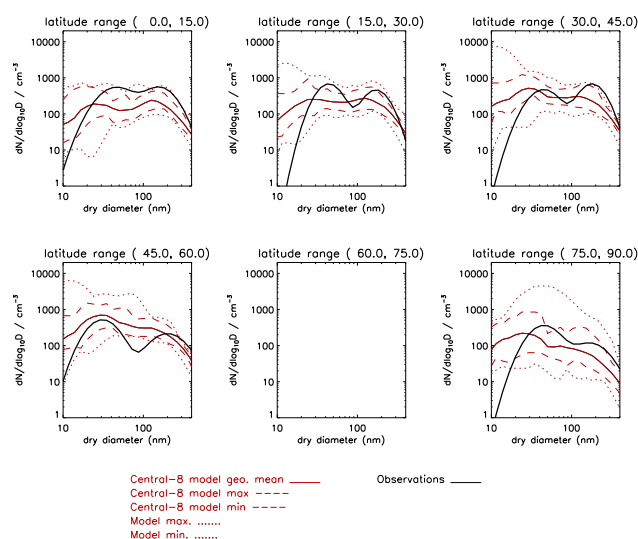


Figure 20. Northern Hemisphere annual-mean central-model simulated size distributions in the marine boundary layer averaged into 15° latitude ranges to compare against the compilation of 30 yr of cruise DMPS/APS measurements from Heintzenberg et al. (2000). The solid line shows the geometric mean of the central-8 models, dashed lines indicate the maximum and minimum of the central-8, while dotted lines indicate the maximum and minimum over all 12 models.

in the Southern Hemisphere mid and high latitudes. As noted by Spracklen et al. (2007), it is also important to realise that most of the Southern Hemisphere cruise measurements in the Heintzenberg et al. (2000) observation climatology were taken during the summer. So some of the apparent low bias in Aitken and accumulation mode concentrations there may just be reflecting a sampling bias with higher concentrations tending to be observed and modelled (not shown) during the summer.

3.2.6 Vertical profile of particle concentrations in marine regions

Figure 22 compares vertical profiles of total particle concentrations (N_3) over the Pacific and Southern Oceans against profiles compiled from aircraft measurements (Clarke and Kapustin, 2002). These measurements were produced from ultrafine condensation particle counter (u-CPC) measurements over several field campaigns (GLOBE-2: May 1990, ACE-1: November 1995, PEM-Tropics A: September 1996 and PEM-Tropics-B: March 1999), and compiled as three separate climatological profiles for the Southern Hemisphere (70 – 20° S), tropical regions (20° S– 20° N) and the Northern Hemisphere (20 – 70° N).

In the free and upper troposphere, over all three marine regions, the central models capture the vertical N_3 profile very well, with relatively small inter-model diversity. This agreement is in contrast to Europe, where the models overestimate

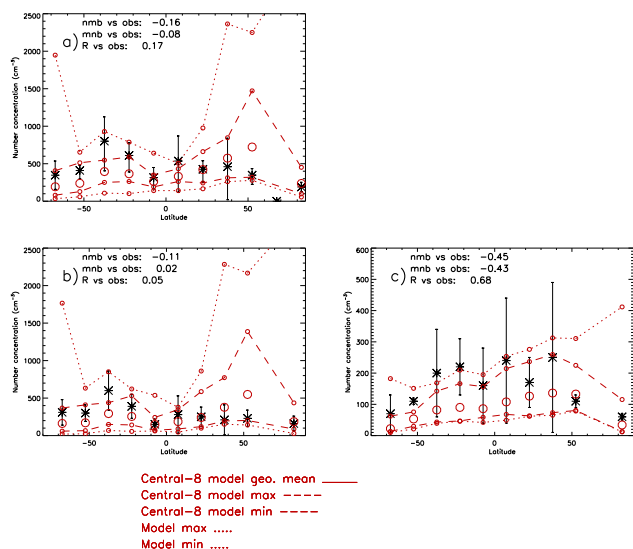


Figure 21. Meridional variation of central-model simulated N_{10} , Aitken mode and accumulation mode particle concentrations in the marine boundary layer, compared with a compilation of observations from cruise measurements (Heintzenberg et al., 2000). The observed values were derived from fitting modes to the full size distributions, whereas the model Aitken and accumulation mode concentrations are here calculated as mean $N_{10} - N_{100}$ and N_{100} respectively, averaging over all marine grid boxes in each latitude band. The solid line shows the geometric mean of the central-8 models, dashed lines indicate the maximum and minimum of the central-8, while dotted lines indicate the maximum and minimum over all 12 models.

particle concentrations (Fig. 18). The observed maximum in particle concentrations (which reflects the balance between particle production via nucleation and loss via coagulation) is captured very well by the central-8 model mean in the Northern and Southern Hemisphere regions, although it is biased slightly low in the Tropics. The central-8 model mean captures boundary layer N_3 concentrations well in the Tropics and particularly the Northern Hemisphere, although there is a slight low bias compared to the aircraft measurements in the Southern Hemisphere. Considering the full model range, one model is showing a factor 20–50 too high particle concentrations, which could indicate too high sulfuric acid vapour concentrations or that the nucleation parametrisation is producing particles much too efficiently. The lowest model has N_3 a factor 10 too low throughout the free troposphere. Since N_3 is dominated by secondary particles from new particle formation, the low bias could be due to an aerosol surface area high bias in the free troposphere, which would give too low simulated sulfuric acid concentrations and nucleation rates. Lee et al. (2011) considered the effect on simulated CCN concentrations of co-varying eight parameters in a global aerosol microphysics model, showing that in the European free troposphere, simulated CCN concentra-

tions are highly sensitive to parameters associated with the treatment of nucleation scavenging.

4 Conclusions

We have carried out the largest ever intercomparison of model simulated size distributions among the new generation of global aerosol microphysics models. Twelve global microphysics models have participated in the coordinated experiments within the AeroCom multi-model intercomparison initiative. We have derived benchmark multi-model data sets based around the mean of the central two-thirds of these models which provides a best estimate of global variation of the sub- μm particle size distribution, critical for understanding aerosol–climate interactions. These multi-model data sets will also serve as a useful reference to assist in model development.

An assessment of the diversity of the central two-thirds of models has identified regions where the models agree and disagree in terms of their predictions of size-resolved particle concentrations and mass concentrations of BC and sulfate. The different patterns of diversity can be explained by dominating aerosol processes and their associated uncertainty. In regions of strong anthropogenic emissions, the diversity of simulated number concentrations of particles larger than 30 nm dry diameter (N_{30}) is very high (factor 2 to 6), while the diversities of N_{100} (factor 1.5 to 2) and of sulfate and BC mass concentrations (factor 1.2 to 3) are lower. The high N_{30} diversity in emissions regions is most likely due to inter-model differences in the size distribution assumed for primary emitted particles, which is a key parameter in need of better observational constraint. In remote marine regions, the pattern of size-resolved diversity is opposite to polluted regions, with N_{30} diversity (factor 1.5 to 2) much lower than for N_{100} (factor 2 to 5), sulfate (factor 2 to 4) and BC (factor 5 to 15). The relatively low N_{30} diversity in remote environments suggests that current global aerosol microphysics models are fairly consistent in their simulation of “natural” background concentrations of particles in the 30 to 100 nm dry diameter range. Model diversity is highest in polar regions, where N_{30} diversity reaches a factor 2 to 7 and N_{100} diversity a factor 6 to 20.

Although there is large model diversity, the central models in general capture well the global variation of the size distribution. For example, the mean of the central two-thirds models agrees very well with observed total particle concentrations at Global Atmosphere Watch sites on the annual mean. Exceptions are poor agreement at the Arctic site Barrow, moderate high biases at South Pole and moderate low biases at Samoa, Mace Head, Neumayer and Southern Great Plains. For this central two-thirds mean, agreement is reasonable against particle size distributions over Europe, aside from the Arctic site Zeppelin, and Ispra, which is strongly affected by nearby pollution sources and steep orography, features not

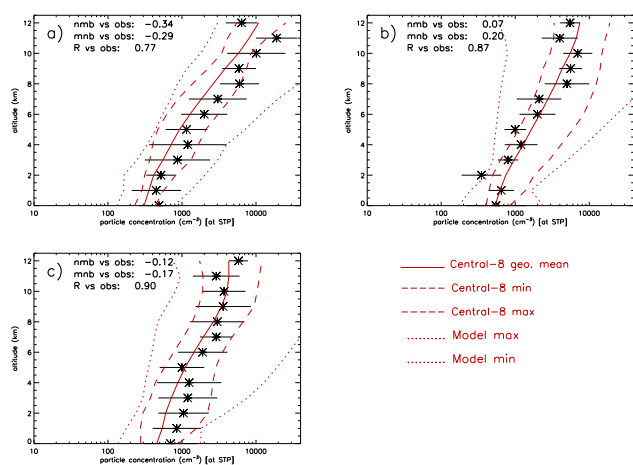


Figure 22. Simulated vertical profile of marine size-resolved N_3 profiles over the Pacific and Southern Oceans compared to observed compilation of aircraft-borne u-CPC measurements as compiled in Clarke and Kapustin (2002). Model values are averages over grid boxes in the latitude ranges a) 70 to 20° S, b) 20° S to 20° N and c) 20 to 70° N. Longitude ranges used to sample the models were a) 185 to 90° W, b) 160 to 120° W and c) 135 to 180° E respectively. These averaged profiles for each model were interpolated onto a 1 km vertical grid. Again, since the measurements are taken over many different seasons, annual mean values were used when constructing the multi-model quantities. The solid line shows the geometric mean of the central-8 models, dashed lines indicate the maximum and minimum of the central-8, while dotted lines indicate the maximum and minimum over all 12 models. Note that model particle concentrations have been converted to values at standard temperature (300 K) and pressure (1000 hPa) to be consistent with these u-CPC measurements. In all other figures measured and model values are at ambient conditions.

expected to be well captured by the global models. However, there are some important biases common among the models at many of the EUSAAR/GUAN sites. For example there is a strong underprediction of accumulation mode particle concentrations during winter, which is likely due to inadequately constrained particle number sources (both primary and secondary) or underprediction of growth due to a general underprediction of wintertime sources of mass (for example from secondary organic aerosol), or both. The results also show that model Aitken mode concentrations are too high during winter and too low during summer, which may reflect an underprediction of particle growth (to larger sizes) in winter and an underprediction of nucleation events in the summer.

The central models capture well the general meridional variation of size distribution in marine regions, with number concentrations at high latitudes mainly in the Aitken mode, whereas the Aitken and accumulation modes have similar number concentrations in the Tropics and mid-latitudes. However, for total particle concentrations (larger than 10 nm) there is a general overestimation in the Northern Hemisphere mid-latitudes and a low bias in the Southern Hemi-

sphere mid-latitudes. The Southern Ocean low bias in total and Aitken particle number concentrations may be due to the models not adequately capturing the observed emission of sea-spray at sub-100 nm sizes (e.g. O'Dowd and Smith, 1993; Clarke et al., 2006; Pierce and Adams, 2006).

The global aerosol microphysics models capture very well the observed peak in ultra-fine condensation nuclei concentrations in the upper troposphere, which is caused by efficient new particle formation in that region. In continental regions there is a tendency to overpredict particle concentrations which could indicate a deficiency in nucleation parametrisations or in the simulated condensation sink.

Overall, the multi-model-mean data set constructed in this study has been shown to have reasonable skill in simulating global particle size distributions, albeit with some important biases in some locations and seasons. The incorporation of aerosol microphysics schemes into climate models has the potential to represent a significant step forward in the fidelity of simulated aerosol radiative forcings. The findings here indicate that most of these global aerosol microphysics models are performing quite well in terms of global variation of the size distribution. Further work to compare the models against size distribution observations at higher temporal resolution is required to better characterise primary and secondary particle sources. Greater understanding of the role of secondary organic aerosol and other components (e.g. nitrate) in affecting nucleation and particle growth in the boundary layer is also required.

Acknowledgements. G. W. Mann and K. S. Carslaw received funding from the National Centre for Atmospheric Science, one of the UK Natural Environment Research Council (NERC) research centres. NERC research grants funded D. V. Spracklen (NE/G015015/1) and L. A. Lee (NE/G006172/1), while D. A. Ridley was funded via an NERC Doctoral Training Grant. M. T. Woodhouse and G. W. Mann received EU funding from the European Research Council (ERC) under Seventh Framework Programme (FP7) consortium projects MACC and MACC-II (grant agreements 218793 and 283576 respectively). C. L. Reddington, K. J. Pringle and K. S. Carslaw also received ERC FP7 funding under the PEGASOS Integrated Project (grant agreement 265148). N. Bellouin, M. Dalvi, C. E. Johnson were supported as part the UK Integrated Climate Programme funded by the Department for Energy and Climate Change (DECC) and Department for Environment Food and Rural Affairs – DECC/Defra (GA01101). S. J. Ghan, R. C. Easter and X. Liu were supported by the US Department of Energy (DOE) Scientific Discoveries through Advanced Computing program. The Pacific Northwest National Laboratory (PNNL) is operated for the DOE by Battelle Memorial Institute under contract DE-AC06-76RLO 1830. S. E. Bauer and K. Tsigaridis were supported by the NASA Modeling, Analysis and Prediction Program (NASA NNX09AK66G) with supercomputing resourced via the NASA High-End Computing (HEC) Program through the NASA Center for Climate Simulation (NCCS) at Goddard Space Flight Center. P. Stier has been supported by the NERC project AEROS (NE/G006148/1) and received EU funding from

the European Research Council (ERC) under FP7 grant agreement FP7-280025. K. J. Pringle, H. Tost and J. Lelieveld received funding from the ERC (grant agreement 226144). K. Zhang was supported by funding from the Max Planck Society. Simulations with ECHAM5-HAM2 were performed at the German Climate Computing Center (Deutsches Klimarechenzentrum GmbH, DKRZ). K. von Salzen was supported by the Canadian Foundation for Climate and Atmospheric Sciences (CFCAS) and Environment Canada. A. Strunk acknowledges financial support from the Flemish agency for Innovation by Science and Technology (IWT) through the Climate and Air Quality Modelling for Policy Support (CLIMAQS) project. F. Yu and G. Luo were supported by NASA under grant NNX11AQ72G and NSF under grant 0942106. The EUSAAR network of aerosol supersites were established with EU funding from the Research Infrastructure Action under the FP6 Structuring the European Research Area Programme, Contract RII3-CT-2006-026140. Data for the Aspöreten and Zeppelin sites were provided by the Atmospheric Science Unit, Department of Applied Env. Sci, Stockholm University with financial support from the Swedish Environmental Protection Agency. The Harwell station is operated with financial support from the UK Department for Environment, Food and Rural Affairs. The Mace Head station received support from several Irish Government Agencies including the EPA, Met Eireann, and Department of the Environment. S. G. Jennings and C. D. O'Dowd would like to acknowledge the support of the European Union, through various projects within the 5th, 6th and 7th Framework programmes. J. Heintzenberg gratefully acknowledges financial support from the German Ministry of Education and Science (AFO 2000 programme) and from the European Commission's DGXII Environment RTD 4th, 5th, 6th and 7th framework programmes. Airborne data provided by A. Clarke, University of Hawaii, represent about 2 decades of approximately equal support from the NSF-Atmospheric Chemistry Program and the NASA-Earth Science Division. We are also grateful to the two anonymous reviewers whose comments have improved the paper considerably.

Edited by: Y. Balkanski

References

- Aan de Brugh, J. M. J., Schaap, M., Vignati, E., Dentener, F., Kahnert, M., Sofiev, M., Huijnen, V., and Krol, M. C.: The European aerosol budget in 2006, *Atmos. Chem. Phys.*, 11, 1117–1139, doi:10.5194/acp-11-1117-2011, 2011.
- Abdul-Razzak, J. and Ghan, S. J.: A parameterization of aerosol activation: 2. Multiple aerosol types, *J. Geophys. Res.*, 105, 6837–6844, 2000.
- Adams, P. J. and Seinfeld, J. H.: Predicting global aerosol size distributions in general circulation models, *J. Geophys. Res.*, 107, 4370, doi:10.1029/2001JD001010, 2002.
- Adams, P. J., Seinfeld, J. H., and Koch, D. M.: Global concentrations of tropospheric sulfate, nitrate and ammonium aerosol simulated in a general circulation model, *J. Geophys. Res.*, 104, 13791–13823, 1999.
- Andreae, M. O., Jones, C. D., and Cox, P. M.: Strong present-day aerosol cooling implies a hot future, *Nature*, 435, 1187–1190, doi:10.1038/nature03671, 2005.
- Andres, R. J. and Kasgnoc, A. D.: A time-averaged inventory of subaerial volcanic sulfur emissions, *J. Geophys. Res.*, 103, 25251–25261, 1998.
- Aquila, V., Hendricks, J., Lauer, A., Riemer, N., Vogel, H., Baumgardner, D., Minikin, A., Petzold, A., Schwarz, J. P., Spackman, J. R., Weinzierl, B., Righi, M., and Dall'Amico, M.: MADE-in: a new aerosol microphysics submodel for global simulation of insoluble particles and their mixing state, *Geosci. Model Dev.*, 4, 325–355, doi:10.5194/gmd-4-325-2011, 2011.
- Asmi, A., Wiedensohler, A., Laj, P., Fjaeraa, A.-M., Sellegri, K., Birmili, W., Weingartner, E., Baltensperger, U., Zdimal, V., Zikova, N., Putaud, J.-P., Marinoni, A., Tunved, P., Hansson, H.-C., Fiebig, M., Kivekäs, N., Lihavainen, H., Asmi, E., Ulevicius, V., Aalto, P. P., Swietlicki, E., Kristensson, A., Mihalopoulos, N., Kalivitis, N., Kalapov, I., Kiss, G., de Leeuw, G., Henzing, B., Harrison, R. M., Beddows, D., O'Dowd, C., Jennings, S. G., Flentje, H., Weinhold, K., Meinhardt, F., Ries, L., and Kulmala, M.: Number size distributions and seasonality of submicron particles in Europe 2008–2009, *Atmos. Chem. Phys.*, 11, 5505–5538, doi:10.5194/acp-11-5505-2011, 2011.
- Asmi, A., Collaud Coen, M., Ogren, J. A., Andrews, E., Sheridan, P., Jefferson, A., Weingartner, E., Baltensperger, U., Bukowiecki, N., Lihavainen, H., Kivekäs, N., Asmi, E., Aalto, P. P., Kulmala, M., Wiedensohler, A., Birmili, W., Hamed, A., O'Dowd, C., G. Jennings, S., Weller, R., Flentje, H., Fjaeraa, A. M., Fiebig, M., Myhre, C. L., Hallar, A. G., Swietlicki, E., Kristensson, A., and Laj, P.: Aerosol decadal trends – Part 2: In-situ aerosol particle number concentrations at GAW and ACTRIS stations, *Atmos. Chem. Phys.*, 13, 895–916, doi:10.5194/acp-13-895-2013, 2013.
- Asmi, E., Frey, A., Virkkula, A., Ehn, M., Manninen, H. E., Timonen, H., Tolonen-Kivimäki, O., Aurela, M., Hillamo, R., and Kulmala, M.: Hygroscopicity and chemical composition of Antarctic sub-micrometre aerosol particles and observations of new particle formation, *Atmos. Chem. Phys.*, 10, 4253–4271, doi:10.5194/acp-10-4253-2010, 2010.
- Ayers, G. and Gras, J.: Seasonal relationship between cloud condensation nuclei and aerosol methanesulphonate in marine air, *Nature*, 353, 834–835, 1991.
- Barrie, L. A., Yi, Y., Leaitch, W. R., Lohmann, U., Kasibhatla, P., Roelofs, G.-J., Wilson, J., McGovern, F., Benkovitz, C., Melieres, M. A., Law, K., Prospero, J., Kristz, M., Bergmann, D., Bridgeman, C., Chin, M., Christensen, J., Easter, R., Feichter, J., Land, C., Jeuken, A., Kjellstrom, E., Koch, D., and Rasch, P.: A comparison of large-scale atmospheric sulphate aerosol models (COSAM): overview and highlights, *Tellus B*, 53, 615–645, 2001.
- Bates, T. S., Kapustin, V. N., Quinn, P. K., Covert, D. S., Coffman, D. J., Mari, C., Durkee, P. A., De Bruyn, W. J., and Saltzman, E. S.: Processes controlling the distribution of aerosol particles in the lower marine boundary layer during the First Aerosol Characterization Experiment (ACE 1), *J. Geophys. Res.*, 103, 16369–16383, 1998.
- Bauer, S. E., Wright, D. L., Koch, D., Lewis, E. R., McGraw, R., Chang, L.-S., Schwartz, S. E., and Ruedy, R.: MATRIX (Multiconfiguration Aerosol TRacker of mIXing state): an aerosol microphysical module for global atmospheric models, *Atmos. Chem. Phys.*, 8, 6003–6035, doi:10.5194/acp-8-6003-2008, 2008.

- Beddows, D. C. S., Dall'Osto, M., and Harrison, R. M.: Cluster analysis of rural, urban and curbside atmospheric particle size data, *Environ. Sci. Technol.*, 43, 4694–4700, 2009.
- Beddows, D. C. S., Dall'Osto, M., Harrison, Roy M., Kulmala, M., Asmi, A., Wiedensohler, A., Laj, P., Fjaeraa, A. M., Sellegri, K., Birmili, W., Bukowiecki, N., Weingartner, E., Baltensperger, U., Zdimal, V., Zikova, N., Putaud, J.-P., Marinoni, A., Tunved, P., Hansson, H.-C., Fiebig, M., Kivekäs, N., Swietlicki, E., Lihavainen, H., Asmi, E., Ulevicius, V., Aalto, P. P., Mihalopoulos, N., Kalivitis, N., Kalapov, I., Kiss, G., de Leeuw, G., Henzing, B., O'Dowd, C., Jennings, S. G., Flentje, H., Meinhardt, F., Ries, L., Denier van der Gon, H. A. C., and Visschedijk, A. J. H.: Variations in tropospheric submicron particle size distributions across the European continent 2008–2009, *Atmos. Chem. Phys.*, 14, 4327–4348, doi:10.5194/acp-14-4327-2014, 2014.
- Bellouin, N., Mann, G. W., Woodhouse, M. T., Johnson, C., Carslaw, K. S., and Dalvi, M.: Impact of the modal aerosol scheme GLOMAP-mode on aerosol forcing in the Hadley Centre Global Environmental Model, *Atmos. Chem. Phys.*, 13, 3027–3044, doi:10.5194/acp-13-3027-2013, 2013.
- Berglen, T. F., Bertsen, T. K., Isaksen, I. S. A., and Sundet, J. K.: A global model of the coupled sulfur/oxidant chemistry in the troposphere: the sulfur cycle, *J. Geophys. Res.*, 109, D19310, doi:10.1029/2003JD003948, 2004.
- Bergman, T., Kerminen, V.-M., Korhonen, H., Lehtinen, K. J., Makkonen, R., Arola, A., Mielonen, T., Romakkaniemi, S., Kulmala, M., and Kokkola, H.: Evaluation of the sectional aerosol microphysics module SALSA implementation in ECHAM5-HAM aerosol-climate model, *Geosci. Model Dev.*, 5, 845–868, doi:10.5194/gmd-5-845-2012, 2012.
- Binkowski, F. S. and Shankar, U.: The Regional Particulate Matter Model: 1. Model description and preliminary results, *J. Geophys. Res.*, 100, 26191–26209, 1995.
- Birmili, W., Weinhold, K., Nordmann, S., Wiedensohler, A., Spindler, G., Müller, K., Herrmann, H., Gnauk, T., Pitz, M., Cyrys, J., Flentje, H., Nickel, C., Kulhbusch, T., Lschau, G., Haase, D., Meinhardt, F., Schwerin, A., Ries, L., and Wirtz, K.: Atmospheric aerosol measurements in the German Ultrafine Aerosol Network (GUAN), Part 1: Soot and particle number distributions, *Gefahrst. Reinhalt. L.*, 69, 137–145, 2009.
- Bodhaine, B. A.: Aerosol measurements at four background sites, *J. Geophys. Res.*, 88, 10753–10768, 1983.
- Bodhaine, B. A., Deluisi, J. J., Harris, J. M., Houmère, P., and Bauman, S.: Aerosol measurements at the South Pole, *Tellus B*, 38, 223–235, 1986.
- Booth, B., B. B., Dunstone, N. J., Halloran, P. R., Andrews, T., and Bellouin, N.: Aerosols implicated as a prime driver of twentieth-century North Atlantic climate variability, *Nature*, 484, 228–232, 2012.
- Boulon, J., Sellegri, K., Venzac, H., Picard, D., Weingartner, E., Wehrle, G., Collaud Coen, M., Bütkofer, R., Flückiger, E., Baltensperger, U., and Laj, P.: New particle formation and ultrafine charged aerosol climatology at a high altitude site in the Alps (Jungfraujoch, 3580 m a.s.l., Switzerland), *Atmos. Chem. Phys.*, 10, 9333–9349, doi:10.5194/acp-10-9333-2010, 2010.
- Bourgeois, Q. and Bey, I.: Pollution transport efficiency toward the Arctic: sensitivity to aerosol scavenging and source regions, *J. Geophys. Res.*, 116, D08213, doi:10.1029/2010JD015096, 2011.
- Browse, J., Carslaw, K. S., Arnold, S. R., Pringle, K., and Boucher, O.: The scavenging processes controlling the seasonal cycle in Arctic sulphate and black carbon aerosol, *Atmos. Chem. Phys.*, 12, 6775–6798, doi:10.5194/acp-12-6775-2012, 2012.
- Browse, J., Carslaw, K. S., Mann, G. W., Birch, C. E., Arnold, S. R., and Leck, C.: The complex response of Arctic cloud condensation nuclei to sea-ice retreat, *Atmos. Chem. Phys. Discuss.*, 13, 17087–17121, doi:10.5194/acpd-13-17087-2013, 2013.
- Carslaw, K. S., Boucher, O., Spracklen, D. V., Mann, G. W., Rae, J. G. L., Woodward, S., and Kulmala, M.: A review of natural aerosol interactions and feedbacks within the Earth system, *Atmos. Chem. Phys.*, 10, 1701–1737, doi:10.5194/acp-10-1701-2010, 2010.
- Carslaw, K. S., Lee, L. A., Reddington, C. L., Pringle, K. J., Rap, A., Forster, P. M., Mann, G. W., Spracklen, D. V., Woodhouse, M. T., Regayre, L. A., and Pierce, J. R.: Large contribution of natural aerosols to uncertainty in indirect forcing, *Nature*, 503, 67–71, doi:10.1038/nature12674, 2013.
- Charron, A., Birmili, W., and Harrison, R. M.: Factors influencing new particle formation at the rural site, Harwell, UK, *J. Geophys. Res.*, 112, D14210, doi:10.1029/2007JD008425, 2007.
- Clarke, A. D. and Kapustin, V. N.: A Pacific aerosol survey, Part 1: a decade of data on particle production, transport, evolution and mixing in the troposphere, *J. Atmos. Sci.*, 59, 363–382, 2002.
- Clarke, A. D., Owens, S. R., and Zhou, J.: An ultrafine sea-salt flux from breaking waves: implications for CCN in the remote marine atmosphere, *J. Geophys. Res.*, 111, D06202, doi:10.1029/2005JD006565, 2006.
- Collaud Coen, M., Andrews, E., Asmi, A., Baltensperger, U., Bukowiecki, N., Day, D., Fiebig, M., Fjaeraa, A. M., Flentje, H., Hyvärinen, A., Jefferson, A., Jennings, S. G., Kouvarakis, G., Lihavainen, H., Lund Myhre, C., Malm, W. C., Mihapopoulos, N., Molnar, J. V., O'Dowd, C., Ogren, J. A., Schichtel, B. A., Sheridan, P., Virkkula, A., Weingartner, E., Weller, R., and Laj, P.: Aerosol decadal trends – Part 1: In-situ optical measurements at GAW and IMPROVE stations, *Atmos. Chem. Phys.*, 13, 869–894, doi:10.5194/acp-13-869-2013, 2013.
- Covert, D. S., Wiedensohler, A., Aalto, P., Heintzenberg, J., McMurry, P. H., and Leck, C.: Aerosol number size distributions from 3 to 500 nm diameter in the arctic marine boundary layer during summer and autumn, *Tellus B*, 48, 197–212, 1996.
- Davison, B., O'Dowd, C., D., Hewitt, C. N., Smith, M. H., Harrison, R. M., Peel, D. A., Wolf, E., Mulvaney, R., Schwikowski, M., and Baltensperger, U.: Dimethyl sulfide and its oxidation products in the atmosphere of the Atlantic and Southern Oceans, *Atmos. Environ.*, 30, 1895–1906, 1996.
- Dentener, F., Kinne, S., Bond, T., Boucher, O., Cofala, J., Generoso, S., Ginoux, P., Gong, S., Hoelzemann, J. J., Ito, A., Marelli, L., Penner, J. E., Putaud, J.-P., Textor, C., Schulz, M., van der Werf, G. R., and Wilson, J.: Emissions of primary aerosol and precursor gases in the years 2000 and 1750 prescribed data-sets for AeroCom, *Atmos. Chem. Phys.*, 6, 4321–4344, doi:10.5194/acp-6-4321-2006, 2006.
- Diehl, T., Heil, A., Chin, M., Pan, X., Streets, D., Schultz, M., and Kinne, S.: Anthropogenic, biomass burning, and volcanic emissions of black carbon, organic carbon, and SO₂ from 1980 to 2010 for hindcast model experiments, *Atmos. Chem. Phys. Discuss.*, 12, 24895–24954, doi:10.5194/acpd-12-24895-2012, 2012.

- Dusek, U., Frank, G. P., Hildebrandt, L., Curtius, J., Schneider, J., Walter, S., Chand, D., Drewnick, F., Hings, S., Jung, D., Borrmann, S., and Andreae, M. O.: Size matters more than chemistry for cloud-nucleating ability of aerosol particles, *Science*, 312, 1375–1378, 2006.
- Easter, R. C., Ghan, S. J., Zhang, Y., Saylor, R. D., Chapman, E. G., Laulainen, N. S., Abdul-Razzak, H., Leung, R., Bian, X., and Zaveri, R. A.: MIRAGE: model description and evaluation of aerosols and trace gases, *J. Geophys. Res.*, 109, D20210, doi:10.1029/2004JD004571, 2004.
- Forster, P., Ramaswamy, V., Artaxo, P., Bernsten, T., Betts, R., Fahey, D. W., Haywood, J., Lean, J., Lowe, D. C., Myhre, G., Nganga, J., Prinn, R., Raga, G., Schulz, M., and Van Dorland, R.: Climate Change 2007: the Physical Science Basis, in: *Changes in Atmospheric Constituents and in Radiative Forcing*, Contribution of Working Group I to the Fourth Assessment Report of the Intergovernmental Panel on Climate Change, Cambridge University Press, Cambridge, New York, 129–234, 2007.
- Garrett, T. J., Zhao, C., and Novelli, P. C.: Assessing the relative contributions of transport efficiency and scavenging to seasonal variability in Arctic aerosol, *Tellus B*, 62, 190–196, 2010.
- Gelbard, F., Tambour, Y., and Seinfeld, J. H.: Sectional representations for simulating aerosol dynamics, *J. Colloid Interf. Sci.*, 76, 541–556, 1980.
- Ghan, S. J. and Schwartz, S. E.: Aerosol properties and processes: a path from field and laboratory measurements to global climate models, *B. Am. Meteorol. Soc.*, 88, 1059–1083, 2007.
- Ghan, S. J., Laulainen, N., Easter, R. C., Wagener, R., Nemesure, S., Chapman, E., Zhang, Y., and Leung, R.: Evaluation of aerosol direct radiative forcing in MIRAGE, *J. Geophys. Res.*, 106, 5295–5316, 2001a.
- Ghan, S. J., Easter, R. C., Hudson, J., and Breon, F.-M.: Evaluation of aerosol indirect radiative forcing in MIRAGE, *J. Geophys. Res.*, 106, 5317–5334, 2001b.
- Gong, S.-L. and Barrie, L.: Simulating the impact of sea salt on global nss sulphate aerosols, *J. Geophys. Res.*, 108, 4516, doi:10.1029/2002JD003181, 2003.
- Haywood, J. and Boucher, O.: Estimates of the direct and indirect radiative forcing due to tropospheric aerosols – a review, *Rev. Geophys.*, 38, 513–543, 2000.
- Haywood, J. and Schulz, M.: Causes of the reduction in uncertainty in the anthropogenic radiative forcing of climate between IPCC (2001) and IPCC (2007), *Geophys. Res. Lett.*, 34, L20701, doi:10.1029/2007GL030749, 2007.
- Heintzenberg, J.: The aerosol-cloud-climate conundrum, *Int. J. Global Warm.*, 4, 219–241, 2012.
- Heintzenberg, J. and Leck, C.: Seasonal variation of the atmospheric aerosol near the top of the marine boundary layer over Spitsbergen related to the Arctic sulphur cycle, *Tellus B*, 46, 52–67, 1994.
- Heintzenberg, J., Covert, D. C., and Van Dingenen, R.: Size distribution and chemical composition of marine aerosols: a compilation and review, *Tellus B*, 52, 1104–1122, 2000.
- Holben, B., Eck, T., Slutsker, I., Tanre, D., Buis, J., Vermote, E., Reagan, J., Kaufman, Y., Nakajima, T., Lavenau, F., Jankowiak, I., and Smirnov, A.: AERONET, a federated instrument network and data-archive for aerosol characterization, *Remote Sens. Environ.*, 66, 1–66, 1998.
- Hoppel, W. A., Frick, G. M., Fitzgerald, J. W., and Larson, R. E.: Marine boundary-layer measurements of new particle formation and the effects nonprecipitating clouds have on aerosol size distribution, *J. Geophys. Res.*, 99, 14443–14459, 1994.
- Huang, L., Gong, S. L., Jia, C. Q., and Lavoue, D.: Importance of deposition processes in simulating the seasonality of the Arctic black carbon aerosol, *J. Geophys. Res.*, 115, D17207, doi:10.1029/2009JD013478, 2010.
- Huneus, N., Schulz, M., Balkanski, Y., Griesfeller, J., Prospero, J., Kinne, S., Bauer, S., Boucher, O., Chin, M., Dentener, F., Diehl, T., Easter, R., Fillmore, D., Ghan, S., Ginoux, P., Grini, A., Horowitz, L., Koch, D., Krol, M. C., Landing, W., Liu, X., Mahowald, N., Miller, R., Morcrette, J.-J., Myhre, G., Penner, J., Perlwitz, J., Stier, P., Takemura, T., and Zender, C. S.: Global dust model intercomparison in AeroCom phase I, *Atmos. Chem. Phys.*, 11, 7781–7816, doi:10.5194/acp-11-7781-2011, 2011.
- Jacobson, M. Z.: Strong radiative heating due to the mixing state of black carbon in atmospheric aerosols, *Nature*, 409, 695–697, 2001.
- Jacobson, M. Z.: Development and application of a new air pollution modeling system – II. Aerosol module structure and design, *Atmos. Environ.*, 31, 131–144, 1997a.
- Jacobson, M. Z.: Development and application of a new air pollution modeling system – III, *Atmos. Environ.*, 31, 587–608, 1997b.
- Jacobson, M. Z. and Seinfeld, J. H.: Evolution of nanoparticle size and mixing state near the point of emission, *Atmos. Environ.*, 38, 1839–1850, 2004.
- Jaenicke, R., Dreiling, V., Lehmann, E., Koutsenogui, P. K., and Stigl, J.: Condensation nuclei at the German Antarctic Station “Georg von Neumayer”, *Tellus B*, 44, 311–317, 1992.
- Jeuken, A., Siegmund, P., Heijboer, L., Feichter, J., and Bengtsson, L.: On the Potential of assimilating meteorological analyses in a global climate model for the purposes of model validation, *J. Geophys. Res.*, 101, 16939–16950, 1996.
- Kahn, R., Banerjee, P., McDonald, D., and Diner, D. J.: Sensitivity of multi-angle imaging to aerosol optical depth and to pure particle size distribution and composition over ocean, *J. Geophys. Res.*, 103, 32195–32213, 1998.
- Kazil, J., Stier, P., Zhang, K., Quaas, J., Kinne, S., O’Donnell, D., Rast, S., Esch, M., Ferrachat, S., Lohmann, U., and Feichter, J.: Aerosol nucleation and its role for clouds and Earth’s radiative forcing in the aerosol-climate model ECHAM5-HAM, *Atmos. Chem. Phys.*, 10, 10733–10752, doi:10.5194/acp-10-10733-2010, 2010.
- Kerminen, V.-M., Paramonov, M., Anttila, T., Riipinen, I., Fountoukis, C., Korhonen, H., Asmi, E., Laakso, L., Lihavainen, H., Swietlicki, E., Svenningsson, B., Asmi, A., Pandis, S. N., Kulmala, M., and Petäjä, T.: Cloud condensation nuclei production associated with atmospheric nucleation: a synthesis based on existing literature and new results, *Atmos. Chem. Phys.*, 12, 12037–12059, doi:10.5194/acp-12-12037-2012, 2012.
- Kinne, S., Schulz, M., Textor, C., Guibert, S., Balkanski, Y., Bauer, S. E., Bernsten, T., Berglen, T. F., Boucher, O., Chin, M., Collins, W., Dentener, F., Diehl, T., Easter, R., Feichter, J., Fillmore, D., Ghan, S., Ginoux, P., Gong, S., Grini, A., Hendricks, J., Herzog, M., Horowitz, L., Isaksen, I., Iversen, T., Kirkevåg, A., Kloster, S., Koch, D., Kristjansson, J. E., Krol, M., Lauer, A., Lamarque, J. F., Lesins, G., Liu, X., Lohmann, U., Montanaro, V., Myhre,

- G., Penner, J., Pitari, G., Reddy, S., Seland, O., Stier, P., Takemura, T., and Tie, X.: An AeroCom initial assessment – optical properties in aerosol component modules of global models, *Atmos. Chem. Phys.*, 6, 1815–1834, doi:10.5194/acp-6-1815-2006, 2006.
- Kipling, Z., Stier, P., Schwarz, J. P., Perring, A. E., Spackman, J. R., Mann, G. W., Johnson, C. E., and Telford, P. J.: Constraints on aerosol processes in climate models from vertically-resolved aircraft observations of black carbon, *Atmos. Chem. Phys.*, 13, 5969–5986, doi:10.5194/acp-13-5969-2013, 2013.
- Koch, D., Schulz, M., Kinne, S., McNaughton, C., Spackman, J. R., Balkanski, Y., Bauer, S., Bernsten, T., Bond, T. C., Boucher, O., Chin, M., Clarke, A., De Luca, N., Dentener, F., Diehl, T., Dubovik, O., Easter, R., Fahey, D. W., Feichter, J., Fillmore, D., Freitag, S., Ghan, S., Ginoux, P., Gong, S., Horowitz, L., Iversen, T., Kirkevåg, A., Klimont, Z., Kondo, Y., Krol, M., Liu, X., Miller, R., Montanaro, V., Moteki, N., Myhre, G., Penner, J. E., Perlwitz, J., Pitari, G., Reddy, S., Sahu, L., Sakamoto, H., Schuster, G., Schwarz, J. P., Seland, Ø., Stier, P., Takegawa, N., Takemura, T., Textor, C., van Aardenne, J. A., and Zhao, Y.: Evaluation of black carbon estimations in global aerosol models, *Atmos. Chem. Phys.*, 9, 9001–9026, doi:10.5194/acp-9-9001-2009, 2009.
- Koffi, B., Schulz, M., Bréon, F.-M., Griesfeller, J., Winker, D., Balkanski, Y., Bauer, S., Bernsten, T., Chin, M., Collins, W. D., Dentener, F., Diehl, T., Easter, R. C., Ghan, S. J., Ginoux, P., Gong, S., Horowitz, L. W., Iversen, T., Kirkevåg, A., Koch, D., Krol, M., Myhre, G., Stier, P., and Takemura, T.: Application of the CALIOP layer product to evaluate the vertical distribution of aerosols estimated by global models: AeroCom phase I results, *J. Geophys. Res.*, 117, D10201, doi:10.1029/2011JD016858, 2012.
- Korhonen, H., Carslaw, K. S., Spracklen, D. V., Ridley, D. A., and Strom, J.: A global model study of processes controlling aerosol size distributions in the Arctic spring and summer, *J. Geophys. Res.*, 113, D08211, doi:10.1029/2007JD009114, 2008a.
- Korhonen, H., Carslaw, K. S., Spracklen, D. V., Mann, G. W., and Woodhouse, M. T.: Influence of ocean dimethyl sulfide emissions on cloud condensation nuclei concentrations and seasonality over the remote Southern Hemisphere oceans: a global model study, *J. Geophys. Res.*, 113, D15204, doi:10.1029/2007JD009718, 2008b.
- Kulmala, M., Laaksonen, A., and Pirjola, L.: Parameterizations for sulfuric acid/water nucleation rates, *J. Geophys. Res.*, 103, 8301–8307, 1998.
- Kulmala, M., Vehkamäki, H., Petäjä, T., Dal Maso, M., Lauria, A., Kerminen, V.-M., Birmili, W., and McMurry, P. H.: Formation and growth rates of ultrafine atmospheric particles: a review of observations, *J. Aerosol Sci.*, 35, 143–176, 2004.
- Lamarque, J.-F., Bond, T. C., Eyring, V., Granier, C., Heil, A., Klimont, Z., Lee, D., Liou, C., Mieville, A., Owen, B., Schultz, M. G., Shindell, D., Smith, S. J., Stehfest, E., Van Aardenne, J., Cooper, O. R., Kainuma, M., Mahowald, N., McConnell, J. R., Naik, V., Riahi, K., and van Vuuren, D. P.: Historical (1850–2000) gridded anthropogenic and biomass burning emissions of reactive gases and aerosols: methodology and application, *Atmos. Chem. Phys.*, 10, 7017–7039, doi:10.5194/acp-10-7017-2010, 2010.
- Lauer, A., Hendricks, J., Ackermann, I., Schell, B., Hass, H., and Metzger, S.: Simulating aerosol microphysics with the ECHAM/MADE GCM – Part I: Model description and comparison with observations, *Atmos. Chem. Phys.*, 5, 3251–3276, doi:10.5194/acp-5-3251-2005, 2005.
- Leaitych, W. R., Banic, C. M., Isaac, G. A., Couture, M. D., Liu, P. S. K., Gultepe, I., Li, S.-M., Kleinman, L., Daum, P. H., and MacPherson, J. I.: Physical and chemical observations in marine stratus during the 1993 North Atlantic Regional Experiment, factors controlling cloud droplet number concentrations, *J. Geophys. Res.*, 101, 29123–29135, 1996.
- Leck, C. and Bigg, E. K.: Biogenic particles in the surface microlayer and overlying atmosphere in the central Arctic Ocean during summer, *Tellus B*, 57, 305–316, 2005.
- Lee, L. A., Carslaw, K. S., Pringle, K. J., Mann, G. W., and Spracklen, D. V.: Emulation of a complex global aerosol model to quantify sensitivity to uncertain parameters, *Atmos. Chem. Phys.*, 11, 12253–12273, doi:10.5194/acp-11-12253-2011, 2011.
- Lee, L. A., Pringle, K. J., Reddington, C. L., Mann, G. W., Stier, P., Spracklen, D. V., Pierce, J. R., and Carslaw, K. S.: The magnitude and causes of uncertainty in global model simulations of cloud condensation nuclei, *Atmos. Chem. Phys.*, 13, 8879–8914, doi:10.5194/acp-13-8879-2013, 2013.
- Lee, Y. H. and Adams, P. J.: Evaluation of aerosol distributions in the GISS-TOMAS global aerosol microphysics model with remote sensing observations, *Atmos. Chem. Phys.*, 10, 2129–2144, doi:10.5194/acp-10-2129-2010, 2010.
- Lee, Y. H., Lamarque, J.-F., Flanner, M. G., Jiao, C., Shindell, D. T., Bernsten, T., Bisiaux, M. M., Cao, J., Collins, W. J., Curran, M., Edwards, R., Faluvegi, G., Ghan, S., Horowitz, L. W., McConnell, J. R., Ming, J., Myhre, G., Nagashima, T., Naik, V., Rumbold, S. T., Skeie, R. B., Sudo, K., Takemura, T., Thevenon, F., Xu, B., and Yoon, J.-H.: Evaluation of preindustrial to present-day black carbon and its albedo forcing from Atmospheric Chemistry and Climate Model Intercomparison Project (ACCMIP), *Atmos. Chem. Phys.*, 13, 2607–2634, doi:10.5194/acp-13-2607-2013, 2013.
- Lelieveld, J. and Heintzenberg, J.: Sulfate cooling effect on climate through in-cloud oxidation of anthropogenic SO₂, *Science*, 258, 117–120, 1992.
- Liu, J., Fan, S., Horowitz, L. W., and Levy II, H.: Evaluation of factors controlling long-range transport of black carbon to the Arctic, *J. Geophys. Res.*, 116, D00A14, doi:10.1029/2010JD015145, 2011.
- Liu, X., Penner, J. E., and Herzog, M.: Global modeling of aerosol dynamics: model description, evaluation, and interactions between sulfate and nonsulfate aerosols, *J. Geophys. Res.*, 110, D18206, doi:10.1029/2004JD005674, 2005.
- Liu, X., Easter, R. C., Ghan, S. J., Zaveri, R., Rasch, P., Shi, X., Lamarque, J.-F., Gettelman, A., Morrison, H., Vitt, F., Conley, A., Park, S., Neale, R., Hannay, C., Ekman, A. M. L., Hess, P., Mahowald, N., Collins, W., Iacono, M. J., Bretherton, C. S., Flanner, M. G., and Mitchell, D.: Toward a minimal representation of aerosols in climate models: description and evaluation in the Community Atmosphere Model CAM5, *Geosci. Model Dev.*, 5, 709–739, doi:10.5194/gmd-5-709-2012, 2012.
- Lohmann, U. and Feichter, J.: Global indirect aerosol effects: a review, *Atmos. Chem. Phys.*, 5, 715–737, doi:10.5194/acp-5-715-2005, 2005.
- Lurmann, F. W., Wexler, A. S., Pandis, S. N., Musarra, S., Kumar, N., and Seinfeld, J. H.: Modelling urban and regional

- aerosols –II. Application to California's south coast air basin, *Atmos. Environ.*, 31, 2695–2715, 1997.
- Mann, G. W., Carslaw, K. S., Spracklen, D. V., Ridley, D. A., Manktelow, P. T., Chipperfield, M. P., Pickering, S. J., and Johnson, C. E.: Description and evaluation of GLOMAP-mode: a modal global aerosol microphysics model for the UKCA composition-climate model, *Geosci. Model Dev.*, 3, 519–551, doi:10.5194/gmd-3-519-2010, 2010.
- Mann, G. W., Carslaw, K. S., Ridley, D. A., Spracklen, D. V., Pringle, K. J., Merikanto, J., Korhonen, H., Schwarz, J. P., Lee, L. A., Manktelow, P. T., Woodhouse, M. T., Schmidt, A., Breider, T. J., Emmerson, K. M., Reddington, C. L., Chipperfield, M. P., and Pickering, S. J.: Intercomparison of modal and sectional aerosol microphysics representations within the same 3-D global chemical transport model, *Atmos. Chem. Phys.*, 12, 4449–4476, doi:10.5194/acp-12-4449-2012, 2012.
- Mann, G. W., Johnson, C. E., Bellouin, N., Dalvi, M., Abraham, L., Carslaw, K. S., Boucher, O., Stier, P., Rae, J., Spracklen, D. V., Telford, P., Pyle, J. A., O'Connor, F., Carver, G., Pringle, K. J., and Woodhouse, M. T.: Evaluation of the new UKCA climate-composition model, Part 3: Tropospheric aerosol properties, in preparation, 2014.
- Martensson, E. M., Nilsson, E. D., de Leeuw, G., Cohen, L. H., and Hansson, H.-C.: Laboratory simulations and parameterization of the primary marine aerosol production, *J. Geophys. Res.*, 108, 4297, doi:10.1029/2002JD002263, 2003.
- Merikanto, J., Napari, I., Vehkamäki, H., Anttila, T., and Kulmala, M.: New parameterization of sulfuric acid-ammonia-water ternary nucleation rates at tropospheric conditions, *J. Geophys. Res.*, 112, D15207, doi:10.1029/2006JD007977, 2007.
- Merikanto, J., Spracklen, D. V., Mann, G. W., Pickering, S. J., and Carslaw, K. S.: Impact of nucleation on global CCN, *Atmos. Chem. Phys.*, 9, 8601–8616, doi:10.5194/acp-9-8601-2009, 2009.
- Metzger, A., Verheggen, B., Dommen, J., Duplissy, D., Prevot, A. S. H., Weingartner, E., Riipinen, I., Kulmala, M., Spracklen, D. V., Carslaw, K. S., and Baltensperger, U.: Evidence for the role of organics in aerosol particle formation under atmospheric conditions, *P. Natl. Acad. Sci. USA*, 107, 6646–6651, doi:10.1073/pnas.0911330107, 2010.
- Metzger, S., Dentener, F., Krol, M., Jeuken, A., and Lelieveld, J.: Gas/aerosol partitioning: 2. Global modeling results, *J. Geophys. Res.*, 107, 4313, doi:10.1029/2001JD001103, 2002.
- Myhre, G., Samset, B. H., Schulz, M., Balkanski, Y., Bauer, S., Bernsten, T. K., Bian, H., Bellouin, N., Chin, M., Diehl, T., Easter, R. C., Feichter, J., Ghan, S. J., Hauglustaine, D., Iversen, T., Kinne, S., Kirkevåg, A., Lamarque, J.-F., Lin, G., Liu, X., Lund, M. T., Luo, G., Ma, X., van Noije, T., Penner, J. E., Rasch, P. J., Ruiz, A., Seland, Ø., Skeie, R. B., Stier, P., Takemura, T., Tsigaridis, K., Wang, P., Wang, Z., Xu, L., Yu, H., Yu, F., Yoon, J.-H., Zhang, K., Zhang, H., and Zhou, C.: Radiative forcing of the direct aerosol effect from AeroCom Phase II simulations, *Atmos. Chem. Phys.*, 13, 1853–1877, doi:10.5194/acp-13-1853-2013, 2013.
- Napari, I., Noppel, M., Vehkamäki, H., and Kulmala, M.: Parameterization of ternary nucleation rates for H₂SO₄-NH₃-H₂O vapours, *J. Geophys. Res.*, 107, 4381, doi:10.1029/2002JD002132, 2002.
- Nenes, A. and Seinfeld, J. H.: Parameterizations of cloud droplet formation in global climate models, *J. Geophys. Res.*, 108, 4415, doi:10.1029/2002JD002911, 2003.
- O'Dowd, C. D. and Smith, M. H.: Physicochemical properties of aerosols over the Northeast Atlantic: evidence for wind-speed-related submicron sea-salt aerosol production, *J. Geophys. Res.*, 98, 1137–1149, 1993.
- O'Dowd, C. D., Geever, M., Hill, M. K., Smith, M. H., and Jennings, S. G.: New particle formation: spatial scales and nucleation rates in the coastal environment, *Geophys. Res. Lett.*, 25, 1661–1664, 1998.
- O'Dowd, C. D., Yoon, Y. J., Junkerman, W., Aalto, P., Kulmala, M., Lihavainen, H., and Viisanen, Y.: Airborne measurements of nucleation mode particles I: coastal nucleation and growth rates, *Atmos. Chem. Phys.*, 7, 1491–1501, doi:10.5194/acp-7-1491-2007, 2007.
- Olivier, J. G. J. and Berdowski, J. J. M.: Global emissions sources and sinks, in: *The Climate System*, edited by: Berdowski, J., Guicherit, R., and Heij, B. J., A. A. Balkema Publishers, Swets and Zeitlinger Publishers, Lisse, the Netherlands, 33–78, 2001.
- Paasonen, P., Asmi, A., Petaja, T., Kajos, M. K., Aijala, M., Junninen, H., Holst, T., Abbatt, J. P. D., Arneth, A., Birmili, W., van der Gon, H. D., Hamed, A., Hoffer, A., Laakso, L., Laaksonen, A., Leaitch, W. R., Plass-Dulmer, C., Pryor, S. C., Raisanen, P., Swietlicki, E., Wiedensohler, A., Worsnop, D. R., Kerminen, V.-M., and Kulmala, M.: Warming-induced increase in aerosol number concentration likely to moderate climate change, *Nat. Geosci.*, 6, 438–442, 2013.
- Penner, J. E., Quaas, J., Storelvmo, T., Takemura, T., Boucher, O., Guo, H., Kirkevåg, A., Kristjánsson, J. E., and Seland, Ø.: Model intercomparison of indirect aerosol effects, *Atmos. Chem. Phys.*, 6, 3391–3405, doi:10.5194/acp-6-3391-2006, 2006.
- Petzold, A., Fiebig, M., Flentje, H., Keil, A., Leiterer, U., Schroeder, F., Stifter, A., Wendisch, M., and Wendling, P.: Vertical variability of aerosol properties observed at a continental site during the Lindenberg Aerosol Characterization Experiment (LACE 98), *J. Geophys. Res.*, 107, 8128, doi:10.1029/2001JD001043, 2002.
- Philippin, S., Laj, P., Putaud, J.-P., Wiedensohler, A., de Leeuw, G., Fjæraa, A., Platt, U., Baltensperger, U., and Fiebig, M.: EU-SAAR: an unprecedented network of aerosol observation in Europe, *Eurozoru Kenkyu*, 24, 78–83, 2009.
- Pierce, J. R. and Adams, P. J.: Global evaluation of CCN formation by direct emission of sea salt and growth of ultrafine sea salt, *J. Geophys. Res.*, 111, D06203, doi:10.1029/2005JD006186, 2006.
- Pierce, J. R. and Adams, P. J.: Uncertainty in global CCN concentrations from uncertain aerosol nucleation and primary emission rates, *Atmos. Chem. Phys.*, 9, 1339–1356, doi:10.5194/acp-9-1339-2009, 2009.
- Pringle, K. J., Tost, H., Message, S., Steil, B., Giannadaki, D., Nenes, A., Fountoukis, C., Stier, P., Vignati, E., and Lelieveld, J.: Description and evaluation of GMXe: a new aerosol submodel for global simulations (v1), *Geosci. Model Dev.*, 3, 391–412, doi:10.5194/gmd-3-391-2010, 2010.
- Quaas, J., Ming, Y., Menon, S., Takemura, T., Wang, M., Penner, J. E., Gettelman, A., Lohmann, U., Bellouin, N., Boucher, O., Sayer, A. M., Thomas, G. E., McComiskey, A., Feingold, G., Hoose, C., Kristjánsson, J. E., Liu, X., Balkanski, Y., Donner, L. J., Ginoux, P. A., Stier, P., Grandey, B., Feichter, J., Sednev, I.,

- Bauer, S. E., Koch, D., Grainger, R. G., Kirkevåg, A., Iversen, T., Seland, Ø., Easter, R., Ghan, S. J., Rasch, P. J., Morrison, H., Lamarque, J.-F., Iacono, M. J., Kinne, S., and Schulz, M.: Aerosol indirect effects – general circulation model intercomparison and evaluation with satellite data, *Atmos. Chem. Phys.*, 9, 8697–8717, doi:10.5194/acp-9-8697-2009, 2009.
- Quinn, P. K., Bates, T. S., Johnson, J. E., Covert, D. S., and Charlson, R. J.: Interactions between the sulfur and reduced nitrogen cycles over the central Pacific ocean, *J. Geophys. Res.*, 95, 16405–16416, 1990.
- Quinn, P. K., Covert, D. S., Bates, T. S., Kapustin, V. N., Ramsey-Bell, D. C., and McInnes, L. M.: Dimethylsulfide/cloud condensation nuclei/climate system: relevant size-resolved measurements of the chemical and physical properties of atmospheric aerosol particles, *J. Geophys. Res.*, 98, 10411–10427, 1993.
- Quinn, P. K., Marshall, S. F., Bates, T. S., Covert, D. S., and Kapustin, V. N.: Comparison of measured and calculated aerosol properties relevant to the direct radiative forcing of tropospheric sulfate aerosol on climate, *J. Geophys. Res.*, 100, 8977–8991, 1995.
- Quinn, P. K., Kapustin, V. N., Bates, T. S., and Covert, D. S.: Chemical and optical properties of marine boundary layer aerosol particles of the mid-Pacific in relation to sources and meteorological transport, *J. Geophys. Res.*, 101, 6931–6951, 1996.
- Quinn, P. K., Miller, T. L., Bates, T. S., Ogren, J. A., Andrews, G. E., and Shaw, G. E.: A 3-year record of simultaneously measured aerosol chemical and optical properties at Barrow, Alaska, *J. Geophys. Res.*, 107, 4130, doi:10.1029/2001JD001248, 2002.
- Raes, F.: Entrainment of free tropospheric aerosol as a regulating mechanism for cloud condensation nuclei in the remote marine boundary layer, *J. Geophys. Res.*, 100, 2893–2903, 1995.
- Raes, F., Dingenen Van, R., Cuevas, E., Velthoven Van, P. F. J., and Prospero, J. M.: Observations of aerosols in the free troposphere and marine boundary layer of the subtropical Northeast Atlantic: discussion of processes determining their size distribution, *J. Geophys. Res.*, 102, 21315–21328, 1997.
- Raes, F., Van Dingenen, R., Vignati, E., Wilson, J., Putaud, J.-P., Seinfeld, J. H., and Adams, P.: Formation and cycling of aerosols in the global troposphere, *Atmos. Environ.*, 34, 4215–4240, 2000.
- Randles, C. A., Kinne, S., Myhre, G., Schulz, M., Stier, P., Fischer, J., Doppler, L., Highwood, E., Ryder, C., Harris, B., Huttunen, J., Ma, Y., Pinker, R. T., Mayer, B., Neubauer, D., Hittenberger, R., Oreopoulos, L., Lee, D., Pitari, G., Di Genova, G., Quaas, J., Rose, F. G., Kato, S., Rumbold, S. T., Vardavas, I., Hatzianastassiou, N., Matsoukas, C., Yu, H., Zhang, F., Zhang, H., and Lu, P.: Intercomparison of shortwave radiative transfer schemes in global aerosol modeling: results from the AeroCom Radiative Transfer Experiment, *Atmos. Chem. Phys.*, 13, 2347–2379, doi:10.5194/acp-13-2347-2013, 2013.
- Reddington, C. L., Carslaw, K. S., Spracklen, D. V., Frontoso, M. G., Collins, L., Merikanto, J., Minikin, A., Hamburger, T., Coe, H., Kulmala, M., Aalto, P., Flentje, H., Plass-Dülmer, C., Birmili, W., Wiedensohler, A., Wehner, B., Tuch, T., Sonntag, A., O’Dowd, C. D., Jennings, S. G., Dupuy, R., Baltensperger, U., Weingartner, E., Hansson, H.-C., Tunved, P., Laj, P., Sellegri, K., Boulon, J., Putaud, J.-P., Gruening, C., Swietlicki, E., Roldin, P., Henzing, J. S., Moerman, M., Mihalopoulos, N., Kouvarakis, G., Ždímal, V., Zíková, N., Marinoni, A., Bonasoni, P., and Duchi, R.: Primary versus secondary contributions to particle number concentrations in the European boundary layer, *Atmos. Chem. Phys.*, 11, 12007–12036, doi:10.5194/acp-11-12007-2011, 2011.
- Samset, B. H., Myhre, G., Schulz, M., Balkanski, Y., Bauer, S., Berntsen, T. K., Bian, H., Bellouin, N., Diehl, T., Easter, R. C., Ghan, S. J., Iversen, T., Kinne, S., Kirkevåg, A., Lamarque, J.-F., Lin, G., Liu, X., Penner, J. E., Seland, Ø., Skeie, R. B., Stier, P., Takemura, T., Tsigaridis, K., and Zhang, K.: Black carbon vertical profiles strongly affect its radiative forcing uncertainty, *Atmos. Chem. Phys.*, 13, 2423–2434, doi:10.5194/acp-13-2423-2013, 2013.
- Schmidt, A., Carslaw, K. S., Mann, G. W., Rap, A., Pringle, K. J., Spracklen, D. V., Wilson, M., and Forster, P. M.: Importance of tropospheric volcanic aerosol for indirect radiative forcing of climate, *Atmos. Chem. Phys.*, 12, 7321–7339, doi:10.5194/acp-12-7321-2012, 2012.
- Schulz, M., Textor, C., Kinne, S., Balkanski, Y., Bauer, S., Berntsen, T., Berglen, T., Boucher, O., Dentener, F., Guibert, S., Isaksen, I. S. A., Iversen, T., Koch, D., Kirkevåg, A., Liu, X., Montanaro, V., Myhre, G., Penner, J. E., Pitari, G., Reddy, S., Seland, Ø., Stier, P., and Takemura, T.: Radiative forcing by aerosols as derived from the AeroCom present-day and pre-industrial simulations, *Atmos. Chem. Phys.*, 6, 5225–5246, doi:10.5194/acp-6-5225-2006, 2006.
- Schulz, M., Chin, M., and Kinne, S.: The Aerosol Model Comparison Project, AeroCom, Phase II: Clearing Up Diversity, International Global Atmospheric Chemistry Newsletter, No. 41, <http://www.igacproject.org/Newsletters>, 2009.
- Schwarz, J. P., Spackman, J. R., Gao, R. S., Watts, L. A., Stier, P., Schulz, M., Davis, S. M., Wofsy, S. C., and Fahey, D. W.: Global-scale black carbon profiles observed in the remote atmosphere and compared to models, *Geophys. Res. Lett.*, 37, L18812, doi:10.1029/2010GL044372, 2010.
- Scott, C. E., Rap, A., Spracklen, D. V., Forster, P. M., Carslaw, K. S., Mann, G. W., Pringle, K. J., Kivekäs, N., Kulmala, M., Lihavainen, H., and Tunved, P.: The direct and indirect radiative effects of biogenic secondary organic aerosol, *Atmos. Chem. Phys.*, 14, 447–470, doi:10.5194/acp-14-447-2014, 2014.
- Sihto, S.-L., Kulmala, M., Kerminen, V.-M., Dal Maso, M., Petäjä, T., Riipinen, I., Korhonen, H., Arnold, F., Janson, R., Boy, M., Laaksonen, A., and Lehtinen, K. E. J.: Atmospheric sulphuric acid and aerosol formation: implications from atmospheric measurements for nucleation and early growth mechanisms, *Atmos. Chem. Phys.*, 6, 4079–4091, doi:10.5194/acp-6-4079-2006, 2006.
- Spracklen, D. V., Pringle, K. J., Carslaw, K. S., Chipperfield, M. P., and Mann, G. W.: A global off-line model of size-resolved aerosol microphysics: I. Model development and prediction of aerosol properties, *Atmos. Chem. Phys.*, 5, 2227–2252, doi:10.5194/acp-5-2227-2005, 2005a.
- Spracklen, D. V., Pringle, K. J., Carslaw, K. S., Chipperfield, M. P., and Mann, G. W.: A global off-line model of size-resolved aerosol microphysics: II. Identification of key uncertainties, *Atmos. Chem. Phys.*, 5, 3233–3250, doi:10.5194/acp-5-3233-2005, 2005b.
- Spracklen, D. V., Carslaw, K. S., Kulmala, M., Kerminen, V.-M., Mann, G. W., and Sihto, S.-L.: The contribution of boundary layer nucleation events to total particle concentrations on regional and global scales, *Atmos. Chem. Phys.*, 6, 5631–5648, doi:10.5194/acp-6-5631-2006, 2006.

- Spracklen, D. V., Pringle, K. J., Carslaw, K. S., Mann, G. W., Manktelow, P., and Heintzenberg, J.: Evaluation of a global aerosol microphysics model against size-resolved particle statistics in the marine atmosphere, *Atmos. Chem. Phys.*, 7, 2073–2090, doi:10.5194/acp-7-2073-2007, 2007.
- Spracklen, D. V., Carslaw, K. S., Kulmala, M., Kerminen, V.-M., Sihto, S.-L., Riipinen, I., Merikanto, J., Mann, G. W., Chipperfield, M. P., Wiedensohler, A., Birmili, W., and Lihavainen, H.: Contribution of particle formation to global cloud condensation nuclei concentrations, *Geophys. Res. Lett.*, 35, L06808, doi:10.1029/2007GL033038, 2008.
- Spracklen, D. V., Carslaw, K. S., Merikanto, J., Mann, G. W., Reddington, C. L., Pickering, S., Ogren, J. A., Andrews, E., Baltensperger, U., Weingartner, E., Boy, M., Kulmala, M., Laakso, L., Lihavainen, H., Kivekäs, N., Komppula, M., Mihalopoulos, N., Kouvarakis, G., Jennings, S. G., O'Dowd, C., Birmili, W., Wiedensohler, A., Weller, R., Gras, J., Laj, P., Sellegri, K., Bonn, B., Krejci, R., Laaksonen, A., Hamed, A., Minikin, A., Harrison, R. M., Talbot, R., and Sun, J.: Explaining global surface aerosol number concentrations in terms of primary emissions and particle formation, *Atmos. Chem. Phys.*, 10, 4775–4793, doi:10.5194/acp-10-4775-2010, 2010.
- Spracklen, D. V., Carslaw, K. S., Pöschl, U., Rap, A., and Forster, P. M.: Global cloud condensation nuclei influenced by carbonaceous combustion aerosol, *Atmos. Chem. Phys.*, 11, 9067–9087, doi:10.5194/acp-11-9067-2011, 2011.
- Stier, P., Feichter, J., Kinne, S., Kloster, S., Vignati, E., Wilson, J., Ganzeveld, L., Tegen, I., Werner, M., Balkanski, Y., Schulz, M., Boucher, O., Minikin, A., and Petzold, A.: The aerosol-climate model ECHAM5-HAM, *Atmos. Chem. Phys.*, 5, 1125–1156, doi:10.5194/acp-5-1125-2005, 2005.
- Stier, P., Schutgens, N. A. J., Bellouin, N., Bian, H., Boucher, O., Chin, M., Ghan, S., Huneus, N., Kinne, S., Lin, G., Ma, X., Myhre, G., Penner, J. E., Randles, C. A., Samset, B., Schulz, M., Takemura, T., Yu, F., Yu, H., and Zhou, C.: Host model uncertainties in aerosol radiative forcing estimates: results from the AeroCom Prescribed intercomparison study, *Atmos. Chem. Phys.*, 13, 3245–3270, doi:10.5194/acp-13-3245-2013, 2013.
- Tanre, D., Kaufman, Y. J., Herman, M., and Mattoo, S.: Remote sensing of aerosol properties over ocean using the MODIS/EOS spectral radiances, *J. Geophys. Res.*, 102, 16971–16988, 1997.
- Telford, P. J., Braesicke, P., Morgenstern, O., and Pyle, J. A.: Technical Note: Description and assessment of a nudged version of the new dynamics Unified Model, *Atmos. Chem. Phys.*, 8, 1701–1712, doi:10.5194/acp-8-1701-2008, 2008.
- Textor, C., Schulz, M., Guibert, S., Kinne, S., Balkanski, Y., Bauer, S., Bernsten, T., Berglen, T., Boucher, O., Chin, M., Dentener, F., Diehl, T., Easter, R., Feichter, H., Fillmore, D., Ghan, S., Ginoux, P., Gong, S., Grini, A., Hendricks, J., Horowitz, L., Huang, P., Isaksen, I., Iversen, I., Kloster, S., Koch, D., Kirkevåg, A., Kristjansson, J. E., Krol, M., Lauer, A., Lamarque, J. F., Liu, X., Montanaro, V., Myhre, G., Penner, J., Pitari, G., Reddy, S., Seland, Ø., Stier, P., Takemura, T., and Tie, X.: Analysis and quantification of the diversities of aerosol life cycles within AeroCom, *Atmos. Chem. Phys.*, 6, 1777–1813, doi:10.5194/acp-6-1777-2006, 2006.
- Textor, C., Schulz, M., Guibert, S., Kinne, S., Balkanski, Y., Bauer, S., Bernsten, T., Berglen, T., Boucher, O., Chin, M., Dentener, F., Diehl, T., Feichter, J., Fillmore, D., Ginoux, P., Gong, S., Grini, A., Hendricks, J., Horowitz, L., Huang, P., Isaksen, I., Iversen, I., Kloster, S., Koch, D., Kirkevåg, A., Kristjansson, J. E., Krol, M., Lauer, A., Lamarque, J. F., Liu, X., Montanaro, V., Myhre, G., Penner, J. E., Pitari, G., Reddy, S., Seland, Ø., Stier, P., Takemura, T., and Tie, X.: The effect of harmonized emissions on aerosol properties in global models – an AeroCom experiment, *Atmos. Chem. Phys.*, 7, 4489–4501, doi:10.5194/acp-7-4489-2007, 2007.
- Thomson, A. M., Calvin, K. V., Smith, S. J., Page Kyle, G., Volke, A., Patel, P., Delgado-Arias, S., Bond-Lamberty, B., Wise, M. A., Clarke, L. E., and Edmonds, J. A.: RCP4.5: a pathway for stabilisation of radiative forcing by 2100, *Climatic Change*, 109, 77–94, 2011.
- Torres, O., Barthia, P. K., Herman, J. R., Sinyuk, A., Ginoux, P., and Holben, B.: A long-term record of aerosol optical depth from TOMS observations and comparisons to AERONET measurements, *J. Atmos. Sci.*, 59, 398–413, 2002.
- Trivittayanurak, W., Adams, P. J., Spracklen, D. V., and Carslaw, K. S.: Tropospheric aerosol microphysics simulation with assimilated meteorology: model description and intermodel comparison, *Atmos. Chem. Phys.*, 8, 3149–3168, doi:10.5194/acp-8-3149-2008, 2008.
- Tsigaridis, K., Daskalakis, N., Kanakidou, M., Adams, P. J., Artaxo, P., Bahadur, R., Balkanski, Y., Bauer, S. E., Bellouin, N., Benedetti, A., Bergman, T., Bernsten, T. K., Beukes, J. P., Bian, H., Carslaw, K. S., Chin, M., Curci, G., Diehl, T., Easter, R. C., Ghan, S. J., Gong, S. L., Hodzic, A., Hoyle, C. R., Iversen, T., Jathar, S., Jimenez, J. L., Kaiser, J. W., Kirkevåg, A., Koch, D., Kokkola, H., Lee, Y. H., Lin, G., Liu, X., Luo, G., Ma, X., Mann, G. W., Mihalopoulos, N., Morcrette, J.-J., Müller, J.-F., Myhre, G., Myriokefalitakis, S., Ng, S., O'Donnell, D., Penner, J. E., Pozzoli, L., Pringle, K. J., Russell, L. M., Schulz, M., Sciare, J., Seland, Ø., Shindell, D. T., Sillman, S., Skeie, R. B., Spracklen, D., Stavrou, T., Steenrod, S. D., Takemura, T., Tittia, P., Tilmes, S., Tost, H., van Noije, T., van Zyl, P. G., von Salzen, K., Yu, F., Wang, Z., Wang, Z., Zaveri, R. A., Zhang, H., Zhang, K., Zhang, Q., and Zhang, X.: The AeroCom evaluation and intercomparison of organic aerosol in global models, *Atmos. Chem. Phys. Discuss.*, 14, 6027–6161, doi:10.5194/acpd-14-6027-2014, 2014.
- Van Dingenen, R., Raes, F., and Jenson, N. R.: Evidence for anthropogenic impact on number concentration and sulfate content of cloud-processed aerosol particles over the North Atlantic, *J. Geophys. Res.*, 100, 21057–21067, 1995.
- Van Dingenen, R., Raes, F., Putaud, J.-P., Baltensperger, U., Charon, A., Facchini, M. C., Decesar, S., Fuzzi, S., Gehrig, R., Hansson, H. C., Harrison, R. M., Hüglin, C., Jones, A. M., Laj, P., Lorbeer, G., Maenhaut, W., Palmgren, F., Querol, X., Rodriguez, S., Schneider, J., Ten Brink, H., Tunved, P., a Torseth, K., Wehner, B., Weingartner, E., Wiedensohler, A., and Waehlin, P.: A European aerosol phenomenology – 1: physical characteristics of particulate matter at kerbside, urban, rural and background sites in Europe, *Atmos. Environ.*, 38, 2561–2577, 2004.
- Vehkamäki, H., Kulmala, M., Napari, I., Lehtinen, K. E. J., Timmreck, C., Noppel, M., and Laaksonen, A.: An improved parameterization for sulfuric acid-water nucleation rates for tropospheric and stratospheric conditions, *J. Geophys. Res.*, 107, 4622, doi:10.1029/2002JD002184, 2002.

- Vignati, E., Karl, M., Krol, M., Wilson, J., Stier, P., and Cavalli, F.: Sources of uncertainties in modelling black carbon at the global scale, *Atmos. Chem. Phys.*, 10, 2595–2611, doi:10.5194/acp-10-2595-2010, 2010.
- von Salzen, K.: Piecewise log-normal approximation of size distributions for aerosol modelling, *Atmos. Chem. Phys.*, 6, 1351–1372, doi:10.5194/acp-6-1351-2006, 2006.
- Whitby, E. and McMurry, P.: Modal aerosol dynamics modeling, *Aerosol. Sci. Tech.*, 27, 673–688, 1997.
- Whitby, K. T.: The physical characteristics of sulfur aerosols, *Atmos. Environ.*, 12, 135–159, 1978.
- Wiedensohler, A., Birmili, W., Nowak, A., Sonntag, A., Weinhold, K., Merkel, M., Wehner, B., Tuch, T., Pfeifer, S., Fiebig, M., Fjåraa, A. M., Asmi, E., Sellegri, K., Depuy, R., Venzac, H., Villani, P., Laj, P., Aalto, P., Ogren, J. A., Swietlicki, E., Williams, P., Roldin, P., Quincey, P., Hüglin, C., Fierz-Schmidhauser, R., Gysel, M., Weingartner, E., Riccobono, F., Santos, S., Gröning, C., Faloon, K., Beddows, D., Harrison, R., Monahan, C., Jennings, S. G., O'Dowd, C. D., Marinoni, A., Horn, H.-G., Keck, L., Jiang, J., Scheckman, J., McMurry, P. H., Deng, Z., Zhao, C. S., Moerman, M., Henzing, B., de Leeuw, G., Lösschau, G., and Bastian, S.: Mobility particle size spectrometers: harmonization of technical standards and data structure to facilitate high quality long-term observations of atmospheric particle number size distributions, *Atmos. Meas. Tech.*, 5, 657–685, doi:10.5194/amt-5-657-2012, 2012.
- Wilson, J., Cuvelier, C., and Raes, F.: A modeling study of global mixed aerosol fields, *J. Geophys. Res.*, 106, 34081–34108, 2001.
- Yu, F.: Ion-mediated nucleation in the atmosphere: key controlling parameters, implications, and look-up table, *J. Geophys. Res.*, 115, D03206, doi:10.1029/2009JD012630, 2010.
- Yu, F. and Luo, G.: Simulation of particle size distribution with a global aerosol model: contribution of nucleation to aerosol and CCN number concentrations, *Atmos. Chem. Phys.*, 9, 7691–7710, doi:10.5194/acp-9-7691-2009, 2009.
- Yu, F., Luo, G., Bates, T., Anderson, B., Clarke, A., Kapustin, V., Yantosca, R., Wang, Y., and Wu, S.: Spatial distributions of particle number concentrations in the global troposphere: simulations, observations, and implications for nucleation mechanisms, *J. Geophys. Res.*, 115, D17205, doi:10.1029/2009JD013473, 2010.
- Zhang, K., Wan, H., Wang, B., Zhang, M., Feichter, J., and Liu, X.: Tropospheric aerosol size distributions simulated by three online global aerosol models using the M7 microphysics module, *Atmos. Chem. Phys.*, 10, 6409–6434, doi:10.5194/acp-10-6409-2010, 2010.
- Zhang, K., O'Donnell, D., Kazil, J., Stier, P., Kinne, S., Lohmann, U., Ferrachat, S., Croft, B., Quaas, J., Wan, H., Rast, S., and Feichter, J.: The global aerosol-climate model ECHAM-HAM, version 2: sensitivity to improvements in process representations, *Atmos. Chem. Phys.*, 12, 8911–8949, doi:10.5194/acp-12-8911-2012, 2012.