

Macroscopic assessment of the quality of cold perfusion after deceased-donor kidney procurement

Dabare, Gangodawilage; Hodson, James; Nath, Jay; Sharif, Adnan; Kalia, Neena; Inston, Nicholas

DOI:
[10.1111/ctr.14272](https://doi.org/10.1111/ctr.14272)

License:
Other (please specify with Rights Statement)

Document Version
Peer reviewed version

Citation for published version (Harvard):

Dabare, G, Hodson, J, Nath, J, Sharif, A, Kalia, N & Inston, N 2021, 'Macroscopic assessment of the quality of cold perfusion after deceased-donor kidney procurement: a United Kingdom population-based cohort study', *Clinical transplantation*, vol. 35, no. 5, e14272. <https://doi.org/10.1111/ctr.14272>

[Link to publication on Research at Birmingham portal](#)

Publisher Rights Statement:

This is the peer reviewed version of the following article: Dabare, D, et al. Macroscopic assessment of the quality of cold perfusion after deceased-donor kidney procurement: A United Kingdom population-based cohort study. *Clin Transplant*. 2021; 35:e14272., which has been published in final form at: <https://doi.org/10.1111/ctr.14272>. This article may be used for non-commercial purposes in accordance with Wiley Terms and Conditions for Use of Self-Archived Versions. This article may not be enhanced, enriched or otherwise transformed into a derivative work, without express permission from Wiley or by statutory rights under applicable legislation. Copyright notices must not be removed, obscured or modified. The article must be linked to Wiley's version of record on Wiley Online Library and any embedding, framing or otherwise making available the article or pages thereof by third parties from platforms, services and websites other than Wiley Online Library must be prohibited.

General rights

Unless a licence is specified above, all rights (including copyright and moral rights) in this document are retained by the authors and/or the copyright holders. The express permission of the copyright holder must be obtained for any use of this material other than for purposes permitted by law.

- Users may freely distribute the URL that is used to identify this publication.
- Users may download and/or print one copy of the publication from the University of Birmingham research portal for the purpose of private study or non-commercial research.
- User may use extracts from the document in line with the concept of 'fair dealing' under the Copyright, Designs and Patents Act 1988 (?)
- Users may not further distribute the material nor use it for the purposes of commercial gain.

Where a licence is displayed above, please note the terms and conditions of the licence govern your use of this document.

When citing, please reference the published version.

Take down policy

While the University of Birmingham exercises care and attention in making items available there are rare occasions when an item has been uploaded in error or has been deemed to be commercially or otherwise sensitive.

If you believe that this is the case for this document, please contact UBIRA@lists.bham.ac.uk providing details and we will remove access to the work immediately and investigate.

Title Page

Title: Macroscopic assessment of the quality of cold perfusion after deceased-donor kidney procurement: A United Kingdom population-based cohort study.

Authors:

Dilan Dabare^{1,2}, James Hodson³, Jay Nath¹, Adnan Sharif¹, Neena Kalia², Nicholas Inston¹.

Correspondence: dilan.dabare1@nhs.net

Affiliations:

¹Department of Nephrology and Transplantation, Queen Elizabeth Hospital, Birmingham, B152GW, UK

²Institute of Cardiovascular Sciences, College of Medical and Dental Sciences, University of Birmingham, Edgbaston, Birmingham, UK, B15 2TT

³Institute of Translational Medicine, University Hospitals Birmingham NHS Foundation Trust, Birmingham, UK.

Running head: Quality of perfusion of procured kidneys

Abstract

Concern regarding the quality of cold perfusion (QOP) during macroscopic assessment of procured kidneys is a common reason for discard. In the UK, QOP is routinely graded by both retrieving and implanting teams during back-bench surgery as: 1 (good), 2 (fair), 3 (poor) or 4 (patchy). We evaluated the association of this grading with organ utilisation and graft outcomes, as well as agreement between teams. Data on all deceased-donor kidneys procured between January 2000 and December 2016 were analysed for discard rates, whilst association with graft outcomes was studied in single adult transplants. Of 31,167 kidneys procured, 90.6%, 5.7%, 1.7% and 2.1% were assigned grades 1, 2, 3 and 4, respectively at retrieval. QOP was an independent risk factor for discard, with the highest rates observed in grade 3 kidneys (41.8%), compared to 6.5% in grade 1 (adjusted odds ratio 7.67, 95% CI 5.44-10.82, $p<0.001$). Grading at retrieval was an independent predictor of delayed graft function ($p=0.019$) and primary non-function ($p=0.001$), but not long-term graft survival ($p=0.111$). Implanting grade was an independent predictor of all three outcomes ($p<0.001$, $p<0.001$ and $p=0.002$ respectively). Consistency of grading between teams was poor (Kappa=0.179). QOP influences utilisation and predicts outcomes, but a standardised and validated scoring system is required.

1 | Introduction

Despite the on-going shortage of kidneys for transplantation, a significant number of organs continue to be discarded after procurement. In the UK, discard rates range from 10-12%, with rates of up to 20% in the US.¹ Marginal and donation after circulatory death (DCD) donor kidneys are more susceptible, with reported discard rates of around 50%.² Although discard of a small proportion of organs is inevitable, evidence suggests that, in some cases, potentially usable kidneys are being discarded.^{3, 4} The reasons for discard are multiple, complex, and compounded by a lack of established tools for viability assessment.^{5, 6} Donor risk indices and pre-implantation histological scoring have been incorporated into some transplant programs,⁷ but lack universal approval, and the latter may even lead to inappropriate discards.⁸ Improved understanding of objective markers that affect outcomes (e.g. donor age and cold ischaemia time) have led to changes in allocation and utilisation.⁹ However, more granular and subjective factors that continue to influence decision-making and graft outcomes remain poorly understood.¹⁰ One such factor is the macroscopic assessment of quality of cold perfusion (QOP) of procured kidneys.

Macroscopic assessment is routinely performed by surgical teams and forms a crucial element of post-procurement decision-making.⁵ Inspection involves assessment for retrieval damage, anatomical abnormalities and QOP. Previous national registry studies have explored factors associated with retrieval damage of kidneys, but overlooked the effects of perfusion defects on organ utilisation and outcomes.^{11, 12} Most transplant programs require the retrieving surgeon to comment on the QOP,¹³ but it remains a poorly defined entity, with no validated

categorisation and/or quantification.¹⁴ Studies have shown that considerable disagreement can exist in assessing QOP, even amongst experienced surgeons within the same centre.^{15, 16} QOP is generally accepted as the subjective assessment of the differential colour staining or discolouration across the surface of the kidney. A well perfused kidney should have a uniformly pale appearance, whilst a poorly perfused kidney may be patchy or globally purple.¹⁷

In the United Kingdom (UK), each procured deceased-donor kidney is routinely graded on its QOP by the retrieval team. This grade is communicated to the implanting team before final acceptance. If the kidney is subsequently transplanted, the implanting team will also grade the perfusion during back-bench preparation. This study sought to use this existing information to explore three main questions with regard to macroscopic assessment of QOP:

- 1) Does the QOP at retrieval influence the decision to discard organs?
- 2) Do the retrieving and implanting teams give consistent perfusion grades?
- 3) Is the QOP at either retrieval or implantation independently associated with graft outcomes (delayed graft function, primary non-function and graft survival)?

2 | Methods

2.1 | Study Population

Data were obtained from the National Health Service Blood and Transplant (NHSBT) database for all deceased-donor kidneys retrieved in the UK between January 2000 and December 2016. Organs were excluded in a stepwise approach, in order to perform various analyses, and details of these exclusions and the resulting sample sizes are depicted in Figure 1. Initially, the association between the QOP grade assigned by the retrieval team and discard rates was assessed, which included all retrieved kidneys in the analysis. Kidneys that are discarded after retrieval (either before or after travelling to recipient centre) are not routinely given a second QOP grade by the implanting team; hence, these were excluded from subsequent analysis. For analysis of the consistency of the QOP grading between retrieving and implanting teams, those kidneys that underwent machine perfusion were additionally excluded, as were those that did not have a QOP grade assigned by both teams. Analyses of the associations between QOP and graft outcomes in transplanted kidneys excluded paediatric recipients (<18 years), and recipients of multi-organ or antibody-incompatible transplants.

The project was registered as an audit with University Hospitals Birmingham NHS Trust (audit code: CARMS-15648) and approved by NHSBT.

2.2 | Quality of Perfusion

During the study period, standard practice was for the QOP, anatomy (number and orientation of vessels, ureters or abnormal lesions), retrieval damage, timing and type of perfusion fluid used to be documented by the retrieving team. This is ordinarily performed

during back-bench surgery, after an adequate amount of perinephric fat has been removed to reveal the parenchyma. The QOP of each kidney is graded as good = 1, fair = 2, poor = 3 or patchy = 4. Findings are communicated to the implanting team before final acceptance. The implanting team performs the same assessment during back-bench surgery before a final decision to use the kidney. The primary reason for discard is also routinely documented, where applicable. Of note, pre-mortem donor heparinisation is not performed in the UK.

2.3 | Definitions

Cold ischaemia time (CIT) was defined as time from the start of cold perfusion to reperfusion after implantation. The donor risk index used was based on the one developed by Watson et al.¹⁸ Delayed graft function (DGF) was defined as need for dialysis within the first 7 days post-transplantation, with grafts that never functioned being classified as having primary non-function (PNF). Graft survival was defined as the time from transplantation to graft nephrectomy, return to dialysis, or death, with patients being censored at the end of follow up. In addition, the outcome of “long-term graft survival” was assessed, which excluded those patients with PNF, and those that either died, developed graft nephrectomy, returned to dialysis or were lost to follow-up within 30 days of transplant.

2.4 | Statistical analysis

2.4.1 | Discard rates

Multivariable analysis was performed, to assess whether QOP measured by the retrieving team was an independent predictor of organ discard. Prior to this analysis, goodness-of-fit

testing was performed for continuous factors using Hosmer–Lemeshow tests, with variables divided into categories based on the quartiles of the distribution if poor fit was detected. A binary logistic regression model was then produced, with the QOP grade entered into the model at the first step, and a backwards stepwise approach to select independent predictors of discard rates for inclusion. Initially, a complete-cases model was produced, which only included those patients with data recorded for all factors being considered. To prevent excessive exclusions of cases, factors with >50% missing data were excluded from this analysis, whilst factors with >10% missing data were included in the initial analysis, but were subsequently excluded if not selected for inclusion by the stepwise procedure. The factors considered for inclusion in the model are detailed in Table S1.

In addition to the complete-cases analyses, a sensitivity analysis was performed, which used a replace-with-mean approach to maximise the number of cases included. For this analysis, missing values for factors other than the perfusion grade were replaced with the mean for continuous factors, or the mode for nominal factors. The results of the replace-with-mean analyses were then compared to the primary complete-cases analysis, to assess whether findings were consistent.

2.4.2 | Outcomes by QOP grade

Initially, a range of factors were compared across the QOP grades. To account for the fact that the grades were ordinal, analyses were performed using Jonckheere-Terpstra tests for continuous factors and Kendall's tau for ordinal factors, with nominal variables being analysed using Chi-square tests. Graft survival was initially analysed using Kaplan-Meier curves. However, this showed that the relatively high rate of PNF in some groups meant that short-

term graft failure rates were high, resulting in the assumption of proportional hazards being broken. As such, analyses of graft survival were repeated for the outcome of “long-term graft survival”, which excluded those patients with PNF, and those that either died, developed graft nephrectomy, returned to dialysis or were lost to follow-up within 30 days of transplant.

Multivariable analysis was then performed, using binary logistic regression models for the outcomes of DGF and PNF, with Cox regression models used for long-term graft survival. Analyses of DGF excluded patients with PNF, whilst analysis of long-term graft survival made exclusions as previously described. Variable selection was performed using a backwards stepwise approach, as previously described. For analyses of the QOP at retrieval, only factors that would be known at this time were considered for inclusion (i.e. donor factors), and the complete-cases model was reported as the primary analysis. Analyses of the QOP by the implanting team considered all factors for inclusion (i.e. adding recipient and transplant-related factors), with the replace-with-mean models reported as the primary analyses, to maximise the included sample size. A full list of factors considered for inclusion in each analysis is reported in Table S1.

All analyses were performed using IBM SPSS 22 (IBM Corp. Armonk, NY), with $p < 0.05$ deemed to be indicative of statistical significance throughout.

3 | Results

During the study period, a total of 31,167 kidneys were retrieved from 15,750 donors. At the time of retrieval, QOP was recorded for a total of 30,808 (98.8%) organs, of which 90.6% (n=27,915) were classified as grade 1; 5.7% (n=1,752) grade 2; 1.7% (n=509) grade 3; and 2.1% (n=632) grade 4, respectively.

3.1 | Discard rates

A total of 2,556 (8.2%) retrieved kidneys were discarded, with the most common primary reasons being poor perfusion (15.0%), anatomical issues (13.6%) and organ damage (9.0%). Discard rates differed significantly with the QOP at retrieval ($p<0.001$), increasing from 6.5% at grade 1 to 17.6% and 41.8% at grades 2 and 3, respectively. However, discard rates were lower (27.1%) for organs with perfusion grade 4 ('patchy') at retrieval. Multivariable analysis identified a number of independent predictors of organ discard, including increasing donor age and creatinine, as well as DCD donations, whilst kidneys where the liver was retrieved at the same time, and those from donors that died of trauma had significantly lower discard rates (Table 1). After accounting for these factors, the association between QOP and discard rates remained significant ($p<0.001$). As per the univariable analysis, discard rates increased progressively from grade 1 to grade 3, before declining at grade 4.

3.2 | Consistency of organ grading

Of the transplanted kidneys, QOP was reported by both retrieval and implanting teams in n=24,105 (96.2%) cases. The consistency of grading was poor, with a quadratic weighted

Kappa statistic of 0.169. Whilst the majority of organs with grade 1 at retrieval retained this grade at the implanting centre (88.1%), consistency of grading for higher grade (2-4) organs was low, ranging from 17.6% - 26.2% (Figure 2). For kidneys classified as grade 2-4 at retrieval, the majority were upgraded to a better grade by the implanting team, with 64.5% of these increasing to QOP grade 1.

3.3 | Factors associated with QOP at the implanting centre

QOP was recorded by the implanting team in n=23,035 (96.9%) of the transplanted kidneys meeting the inclusion criteria for this analysis (Figure 1), of which 86.2% (n=19,845) were assigned grade 1, 9.5% (n=2,187) grade 2, 2.0% (n=464) grade 3 and 2.3% (n=539) grade 4. Of the donor factors considered (Table 2a/b), increasing age, BMI, terminal creatinine, final temperature, last pre-donation systolic blood pressure, donor risk index and length of stay were associated with significantly poorer QOP grade. Kidneys assigned poorer grading by the implanting team were transplanted into recipients that were significantly older, more likely to be male and on haemodialysis, and with higher BMI and rates of diabetes (Table 2a/b). Analyses using the QOP assigned by the retrieval team returned similar results (data not shown).

3.4 | Outcomes based on QOP

On univariable analysis, rates of initial graft dysfunction differed significantly across QOP grades, as assigned both by retrieval and implantation teams ($p < 0.001$, Table 3). More specifically, rates of DGF increased markedly between grade 1 and grade 2, with marginal increases across the subsequent grades, whilst rates of PNF increased progressively from grade 1 to grade 3, before declining at grade 4. The QOP grade assigned by the retrieval team

was not found to be significantly associated with the outcome of long-term graft survival (i.e. after excluding graft failures within 30 days, $p=0.454$, Figure 3b). However, QOP grade denoted by implantation team was associated with long-term graft survival ($p<0.001$, Figure 3d), with graft survival declining progressively between grade 1 and grade 3 ($p=0.001$), but no significant difference detected between grade 1 and grade 4 organs ($p=0.326$).

Multivariable analyses were then performed, to assess the association between QOP and graft outcomes, after accounting for the effects of potentially confounding factors (Table 4, Table S3a-c, Table S4a-e). Analysis of QOP assessed by the retrieval team only adjusted for those factors that would be known at the time that the kidney was retrieved, to assess whether QOP could improve predictive accuracy over and above the other information available to the retrieval team (Table S1). After adjustment for these factors, the rates of the DGF were found to increase significantly from grade 1 to grade 2 (adjusted odds ratio [aOR]: 1.28, 95% CI: 1.06 – 1.54, $p=0.009$). However, no significant increase in the risk of DGF was observed in grade 3 ($p=0.292$) or grade 4 ($p=0.090$) organs, with these groups having similar risk to that of grade 2 organs. Analysis of PNF showed a significant progressive increase from grade 1 to 3, but no significant difference was detected between grade 1 and 4 organs ($p=0.371$). As per the univariable analysis, long-term graft survival was not found to differ significantly across the QOP grades assigned by the retrieval team after multivariable adjustment for confounding factors ($p=0.111$).

Multivariable analyses of the QOP measured by the implanting team additionally adjusted for the recipient and transplant-related factors that would be known at this time (Table S1). This analysis found the risk of DGF to increase progressively across the QOP grades ($p<0.001$), with

the largest difference being between grade 4 and grade 1 organs (aOR: 2.08, 95% CI: 1.69 – 2.54, $p < 0.001$). Analysis of PNF found in the risk to be significantly higher in QOP grades 2-4, relative to grade 1, but with the highest risk observed in QOP grade 3 kidneys (aOR: 3.65, 95% CI: 2.55 – 5.23, $p < 0.001$). Unlike when measured at retrieval, the QOP measured by the implanting team was found to be a significant independent predictor of long-term graft survival ($p = 0.002$). Compared to grade 1 organs, long-term graft survival was found to be significantly shorter in QOP grade 2 (adjusted hazard ratio [aHR]: 1.18, 95% CI: 1.06 – 1.31, $p = 0.003$) and grade 3 (HR: 1.36, 95% CI: 1.09 – 1.69, $p = 0.007$) organs, but not in those of QOP grade 4 (aHR: 1.04, 95% CI: 0.83 – 1.29, $p = 0.749$).

4 | Discussion

Subjective concern over the QOP of procured deceased-donor kidneys is the most common reason for discard (15%) in the UK. This objective analysis, to our knowledge the largest study on this factor, confirms that macroscopic assessment of the QOP has an independent effect on organ utilisation, and can be used to predict short and long-term graft outcomes. Our key findings are; 1) grade 3 (poor perfusion) kidneys are over 6 times more likely to be discarded than grade 1 (good perfusion) kidneys when assessed immediately after retrieval; 2) there is poor consistency between retrieval and implantation macroscopic assessment of kidney perfusion, 3) QOP measured by the implanting team is superior to that measured by the retrieval team for predicting short and long-term outcome, and should be considered during decision-making, patient counselling and risk assessment.

The impact of QOP on organ utilisation is poorly reported, with studies primarily based on single-centre series of discarded kidneys only. In a study of 20 nationally discarded kidneys in the UK, Callaghan et al. observed poor perfusion was the most common reason for discard (25%).¹⁵ In a follow-up study, after the introduction of a national fast-track offering scheme for hard-to-place deceased-donor kidneys, Mittal et al. observed that 22.6% (7/31) of discarded kidneys were not implanted due to poor perfusion.¹⁶ In the US, Narvaez et al. evaluated 456 hard-to-place kidneys offered to a single-centre, and observed 11% of discarded kidneys had visual signs of perfusion defects which, on multivariable analysis, was significantly associated with discard (aOR 2.76, 95% CI, 1.48-5.12).⁽¹⁰⁾ Our study supports

these findings, demonstrating an independent effect of QOP alone on discard rates, with odds of discard based on discrete grades.

Interestingly, discard rates for grade 4 organs was similar to grade 2 organs, which may reflect the subjective nature of the terms 'fair' (grade 2) and 'patchy' (grade 4). Alternatively, grade 4 kidneys may represent high-quality kidneys that have been poorly perfused during retrieval (e.g. aortic cannulae being placed too cranially). These results suggest that further work is required to refine the current grading scale. Recently, Ayorinde et al. have developed a pre-implantation, objective macroscopic scoring system (Cambridge Kidney Assessment Tool, CKAT).¹⁴ Of the variables included in their system, the quality of the Carrel patch and the perfusion grade were found to be independently associated with organ utilisation. These two variables, when combined, performed better than independent consultant surgeon in predicting utilisation, and correlated well with 1-year graft survival. The authors advocated the development of a common language to aid assessment and prevent inappropriate discards.

The prognostic value of macroscopic assessment on eventual graft outcomes in the recipient is poorly understood. Kidneys with sub-optimal perfusion are intuitively expected to have inferior graft outcomes, yet data to support this is limited. Berardelli et al. applied a complex macroscopic scoring system to select kidneys from older (age > 60 years) donors, and found that 3-year graft survival was similar to that of 'ideal' (age 11 – 49 years) donors.¹⁹ The authors concluded macroscopic assessment obviated need for histological assessment and reduced cold ischaemia time, but their scoring system remains unvalidated. More recently, Tière et al. undertook a single-centre, prospective study of 166 transplanted kidneys and correlated the

macroscopic assessment of QOP by the procurement surgeon with immediate graft function, DGF and PNF.²⁰ In addition to other macroscopic variables, the surgeon graded the perfusion on a scale of 1 (poor) to 10 (excellent). Multivariable analysis showed QOP was significantly associated with these short-term outcome measures. The authors suggested that these kidneys may benefit from machine perfusion and should be incorporated into multi-variable scoring systems to aid decision-making. Our study supports these recommendations with data from a national perspective.

Early graft loss can have catastrophic effects on patient survival.²¹ We demonstrated that QOP at both time points is independently associated with PNF, with the grade measured by the implanting team being the stronger predictor. When considering DGF alone, poorer grades had significantly higher rates, with 44.5% of kidneys classified as QOP grade 4 by the implanting team developing DGF, compared to 25.7% of grade 1 kidneys ($p < 0.001$). Given that DGF is associated with short-term morbidity in all deceased-donors, and with graft survival in DBD kidneys,²² early recognition of kidneys prone to DGF may help decide on appropriate pre-implantation optimisation and post-operative planning.²³ Our study is the first to consider the effect of QOP on long-term graft survival. Whilst the QOP classified by the retrieval team was not found to be significantly predictive of this outcome ($p = 0.111$), the QOP from the implanting team was found to be a significant independent predictor of outcome ($p = 0.002$), with an adjusted hazard ratio of 1.36 (95% CI: 1.09 – 1.69) for grade 3 vs. grade 1 organs.

These findings should be considered during pre-implantation donor quality assessment and optimisation. A number of donor risk indices (DRIs), combining multiple donor and/or pre-transplant factors, have been used to assess donor quality, but lack sufficient predictive

power.¹⁸ Further work is required to ascertain the value of a kidney risk index including factors such as the quality of perfusion and renal artery atherosclerosis. The combination of donor and kidney factors may provide a better decision-making model. Indeed, poorly perfused kidneys with otherwise favourable factors may be acceptable to challenging recipients (long-waiters or highly sensitised).⁽²⁴⁾ In addition, several groups are exploring the use of normothermic machine perfusion to evaluate and optimise kidneys pre-implantation.⁽²⁵⁾ Kidneys with sub-optimal perfusion have been successfully evaluated and transplanted after a period of machine perfusion.^(17, 26) Our data may help identify kidneys that could benefit from such 'rescue therapy'. This would particularly be valuable for grade 2-4 kidneys, where there is doubt regarding their viability.

The inconsistency in grading between retrieval and implanting teams is a concern, given the potential for inappropriate discard at the time of offering. For kidneys classified as having sub-optimal perfusion (grade 2-4) at retrieval, the majority were assigned a better grade by the implanting team. There are number of plausible explanations for this, including better exposure and flushing at implanting centre, discrepancies in the level of surgical experience and perhaps a natural bias of the implanting surgeon to document a better grade. Hosgood et al. and Mittal et al. observed similar variations in judgement when poorly perfused discarded kidneys were re-evaluated by experienced kidney transplant surgeons.^(16, 17) This highlights the importance of re-assessment at the implanting centre, before the final decision is made to discard an organ, and the need for further standardisation and training on macroscopic assessment.

The main strength of this study is the large, consecutive sample size, resulting in sufficient statistical power to detect clinically meaningful effect sizes, and to allow for analysis of infrequently occurring outcomes, such as PNF. The cohort also included organs from both marginal and non-marginal donors, which should further improve generalizability relative to previous studies, which have tended to focus on hard-to-place kidneys with poor perfusion only.

There are a number of limitations to this study. Firstly, this grading scale is not validated, but instead represents real-world data and application of one aspect of donor kidney assessment in a national deceased-donor programme. A further limitation was the lack of a second assessment of perfusion for kidneys that were discarded. In some cases, these kidneys may have been discarded due to sub-optimal perfusion. Although this represents only 8.2% of all the kidneys analysed, it may have biased results based on recipient outcomes. Other more subtle retrieval related factors, such as inappropriate placement of the aortic cannula, degree of arterial atherosclerosis and time from in-situ perfusion to removal of kidney are not available for analysis, but may have influenced outcomes in some cases. In addition, changes to the retrieval service and allocation system over time (era effect) may have influenced outcomes. Finally, this data is not necessarily generalisable to other transplant programs, which may have different allocation policies, longer average cold ischaemia times, higher discard rates and differing retrieval practices.⁽²⁷⁾

To conclude, our study has identified macroscopic assessment of the QOP as an important predictor of organ utilisation and graft outcomes, based on an existing grading system. Where there are concerns about perfusion at retrieval, we suggest that the organ is sent to a kidney

unit with a view to further evaluation and/or optimisation. Urgent refinement, standardisation and validation of macroscopic scoring systems using a common language is required to prevent inappropriate discards.

References

1. Stewart DE, Garcia VC, Rosendale JD, Klassen DK, Carrico BJ. Diagnosing the decades-long rise in the deceased donor kidney discard rate in the United States. *Transplantation*. 2017;101(3):575-87.
2. Singh SK, Kim SJ. Epidemiology of Kidney Discard from Expanded Criteria Donors Undergoing Donation after Circulatory Death. *Clin J Am Soc Nephrol*. 2016;11(2):317-23.
3. Mohan S, Chiles MC, Patzer RE, Pastan SO, Husain SA, Carpenter DJ, et al. Factors leading to the discard of deceased donor kidneys in the United States. *Kidney Int*. 2018;94(1):187-98.
4. Husain SA, Chiles MC, Lee S, Pastan SO, Patzer RE, Tanriover B, et al. Characteristics and Performance of Unilateral Kidney Transplants from Deceased Donors. *Clin J Am Soc Nephrol*. 2018;13(1):118-27.
5. Dare AJ, Pettigrew GJ, Saeb-Parsy K. Preoperative assessment of the deceased-donor kidney: from macroscopic appearance to molecular biomarkers. *Transplantation*. 2014;97(8):797-807.
6. Miret Alomar E, Trilla Herrera E, Lorente Garcia D, Regis Placido L, Lopez Del Campo R, Cuadras Sole M, et al. Systematic review of kidney transplantation functional predictors. *Actas Urol Esp*. 2018;42(4):218-26.
7. Rao PS, Schaubel DE, Guidinger MK, Andreoni KA, Wolfe RA, Merion RM, et al. A comprehensive risk quantification score for deceased donor kidneys: the kidney donor risk index. *Transplantation*. 2009;88(2):231-6.
8. Stallone G, Grandaliano G. To discard or not to discard: transplantation and the art of scoring. *Clin Kidney J*. 2019;12(4):564-8.
9. Summers DM, Johnson RJ, Hudson A, Collett D, Watson CJ, Bradley JA. Effect of donor age and cold storage time on outcome in recipients of kidneys donated after circulatory death in the UK: a cohort study. *Lancet (London, England)*. 2013;381(9868):727-34.
10. Narvaez JRF, Nie J, Noyes K, Leeman M, Kayler LK. Hard-to-place kidney offers: Donor- and system-level predictors of discard. *Am J Transplant*. 2018;18(11):2708-18.
11. Ausania F, White SA, Pocock P, Manas DM. Kidney damage during organ recovery in donation after circulatory death donors: data from UK National Transplant Database. *Am J Transplant*. 2012;12(4):932-6.
12. Wigmore SJ, Seeney FM, Pleass HC, Praseedom RK, Forsythe JL. Kidney damage during organ retrieval: data from UK National Transplant Database. *Kidney Advisory Group. Lancet (London, England)*. 1999;354(9185):1143-6.
13. Foundation E. Eurotransplant Manual Chapter 9 - Donor. 2016:37.
14. Ayorinde JOO, Hamed M, Goh MA, Summers DM, Dare A, Chen Y, et al. Development of an objective, standardized tool for surgical assessment of deceased donor kidneys: The Cambridge Kidney Assessment Tool. *Clin Transplant*. 2020;34(2):e13782.
15. Callaghan CJ, Harper SJ, Saeb-Parsy K, Hudson A, Gibbs P, Watson CJ, et al. The discard of deceased donor kidneys in the UK. *Clin Transplant*. 2014;28(3):345-53.
16. Mittal S, Adamusiak A, Horsfield C, Loukopoulos I, Karydis N, Kessaris N, et al. A Re-evaluation of Discarded Deceased Donor Kidneys in the UK: Are Usable Organs Still Being Discarded? *Transplantation*. 2017;101(7):1698-703.
17. Hosgood SA, Barlow AD, Dormer J, Nicholson ML. The use of ex-vivo normothermic perfusion for the resuscitation and assessment of human kidneys discarded because of inadequate in situ perfusion. *J Transl Med*. 2015;13:329.

18. Watson CJ, Johnson RJ, Birch R, Collett D, Bradley JA. A simplified donor risk index for predicting outcome after deceased donor kidney transplantation. *Transplantation*. 2012;93(3):314-8.
19. Berardinelli L, Beretta C, Raiteri M, Carini M. Early and long-term results using older kidneys from cadaver or living donors. *Clin Transpl*. 2001:157-66.
20. Tierie EL, Roodnat JJ, Dor F. Systematic Surgical Assessment of Deceased-Donor Kidneys as a Predictor of Short-Term Transplant Outcomes. *European surgical research Europäische chirurgische Forschung Recherches chirurgicales europeennes*. 2019;60(3-4):97-105.
21. Hamed MO, Chen Y, Pasea L, Watson CJ, Torpey N, Bradley JA, et al. Early graft loss after kidney transplantation: risk factors and consequences. *Am J Transplant*. 2015;15(6):1632-43.
22. Mannon RB. Delayed Graft Function: The AKI of Kidney Transplantation. *Nephron*. 2018;140(2):94-8.
23. Moers C, Smits JM, Maathuis MH, Treckmann J, van Gelder F, Napieralski BP, et al. Machine perfusion or cold storage in deceased-donor kidney transplantation. *N Engl J Med*. 2009;360(1):7-19.
24. Manook M, Koeser L, Ahmed Z, Robb M, Johnson R, Shaw O, et al. Post-listing survival for highly sensitised patients on the UK kidney transplant waiting list: a matched cohort analysis. *Lancet (London, England)*. 2017;389(10070):727-34.
25. Kathis JM, Paul A, Robinson LA, Selzner M. Ex vivo machine perfusion for renal graft preservation. *Transplant Rev (Orlando)*. 2018;32(1):1-9.
26. Georgiades F, Hosgood SA, Butler AJ, Nicholson ML. Use of ex vivo normothermic machine perfusion after normothermic regional perfusion to salvage a poorly perfused DCD kidney. *Am J Transplant*. 2019.
27. Ibrahim M, Vece G, Mehew J, Johnson R, Forsythe J, Klassen D, et al. An international comparison of deceased donor kidney utilization: What can the United States and the United Kingdom learn from each other? *Am J Transplant*. 2020;20(5):1309-22.

Figure 1

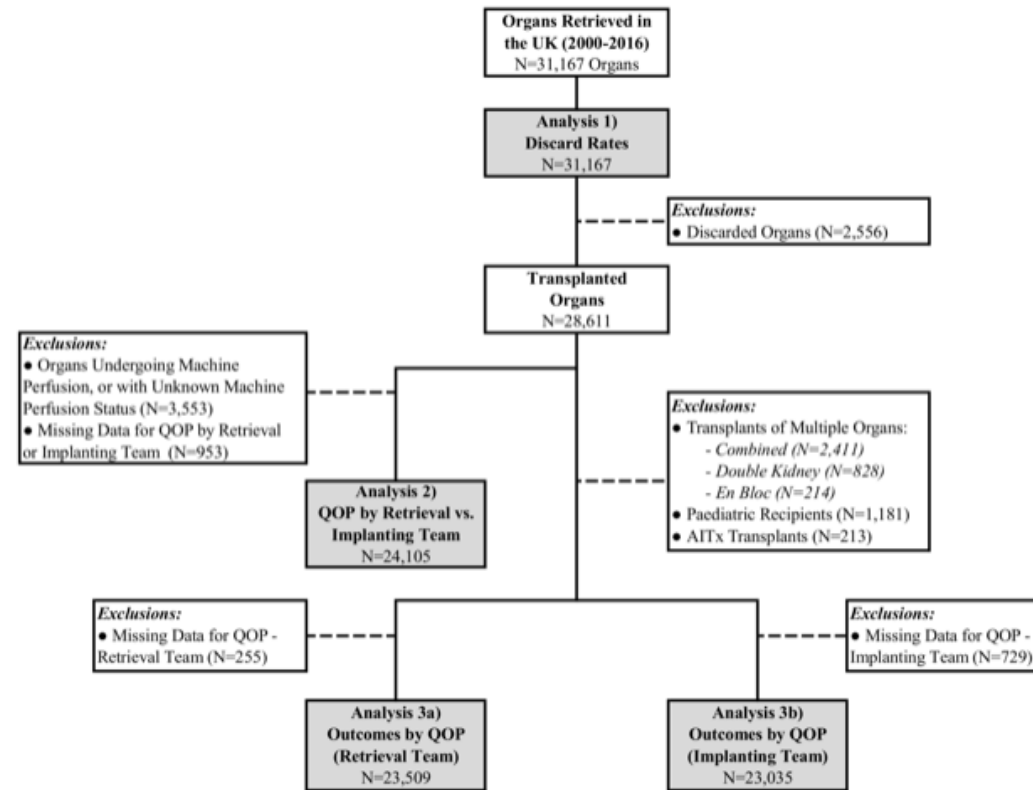


Figure 2

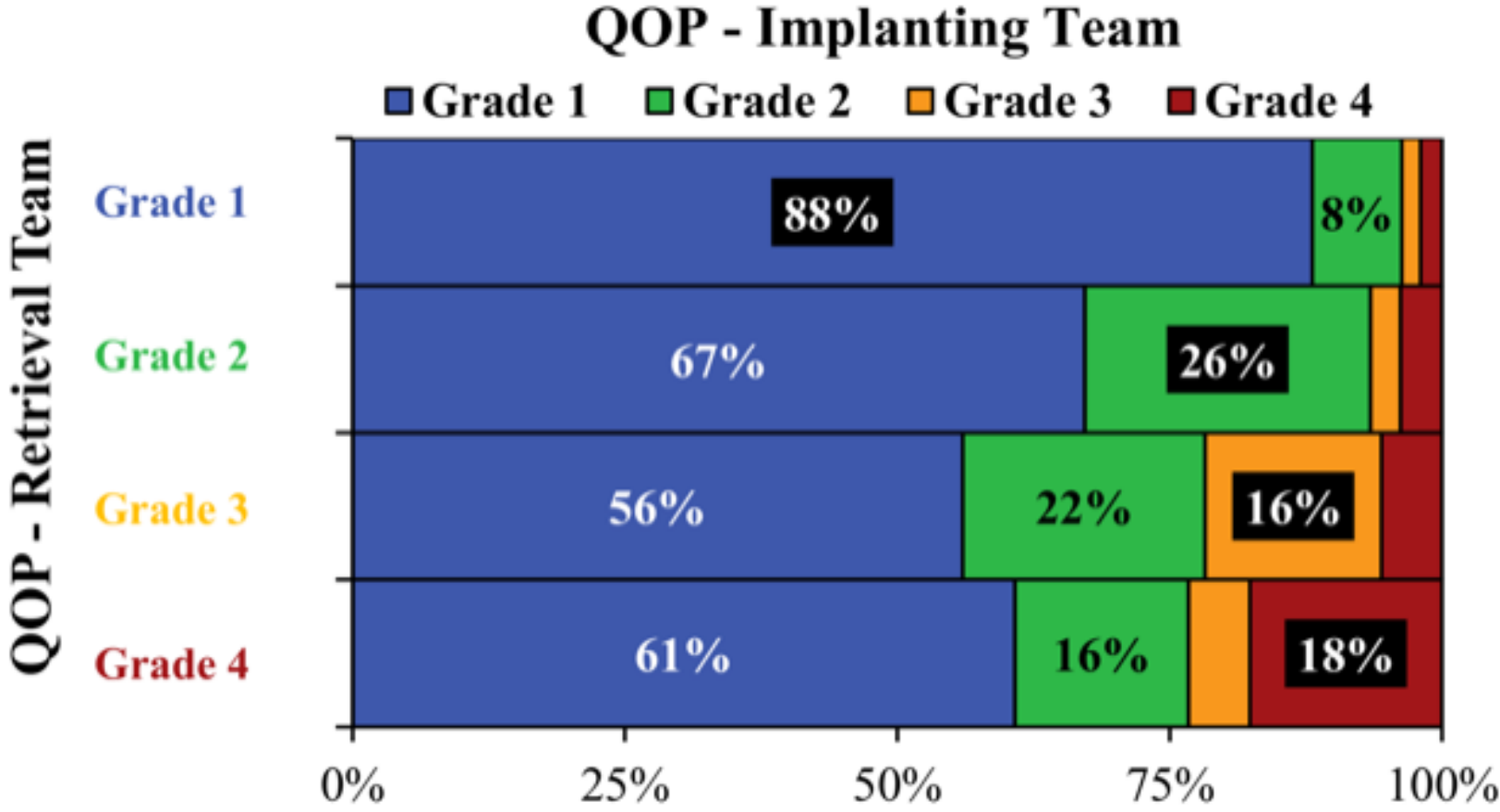
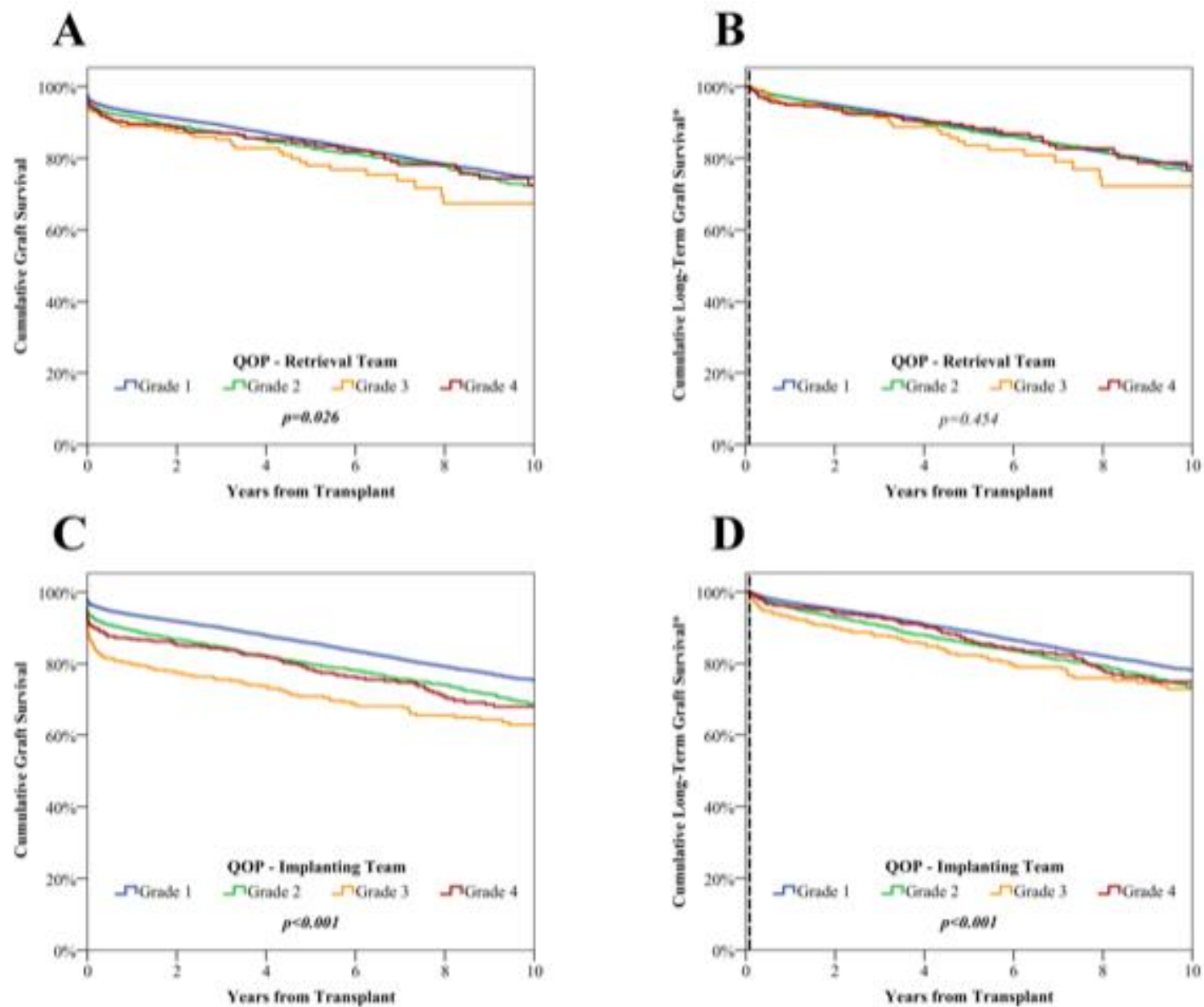


Figure 3



Tables

Table 1 – Multivariable analysis of predictors of organ discard

	Odds Ratio (95% CI)	P-Value
Quality of perfusion (retrieval team)		<0.001
Grade 1	-	-
Grade 2	2.13 (1.65 - 2.75)	<0.001
Grade 3	7.67 (5.44 - 10.82)	<0.001
Grade 4	3.79 (2.69 - 5.34)	<0.001
Machine perfusion		0.044
No	-	-
Hypothermic	0.64 (0.45 - 0.91)	0.012
Normothermic	0.92 (0.20 - 4.28)	0.913
Donor Age (Years)		<0.001
<40	-	-
40-49	1.50 (0.77 - 2.94)	0.236
50-59	1.88 (0.97 - 3.65)	0.061
60+	5.88 (2.77 - 12.49)	<0.001
Donor body mass index (kg/m ²)		0.082
<18.5	1.50 (0.84 - 2.66)	0.171
18.5-24.9	-	-
25.0-29.9	1.25 (1.04 - 1.50)	0.018
30.0+	1.15 (0.92 - 1.43)	0.212
Donor history of hypertension	1.64 (1.33 - 2.03)	<0.001
Donor Hepatitis C Virus (Positive)	34.90 (17.03 - 71.53)	<0.001
Donor Cytomegalovirus (Positive)	1.19 (1.02 - 1.38)	0.030
Donor cause of death		0.015
Intracranial haemorrhage	-	-
Hypoxic brain damage	1.12 (0.92 - 1.37)	0.254
Trauma	0.64 (0.44 - 0.94)	0.022
Other	1.26 (0.97 - 1.63)	0.089
Donor type (DCD)	1.24 (1.01 - 1.52)	0.041
Donor liver retrieved	0.65 (0.54 - 0.78)	<0.001
Donor terminal creatinine (mmol/L)		<0.001
<60	-	-
60-74	1.09 (0.87 - 1.37)	0.466
75-99	1.29 (1.04 - 1.61)	0.021
100+	2.70 (2.18 - 3.35)	<0.001
Donor last temperature (°C)		<0.001
<36.0	-	-
36.0-36.4	0.63 (0.50 - 0.80)	<0.001
36.5-36.9	0.91 (0.71 - 1.17)	0.477
37.0+	0.72 (0.59 - 0.88)	0.002
Donor last systolic blood pressure (mmHg)		0.024
<110	-	-
110-119	1.12 (0.88 - 1.42)	0.347
120-134	1.02 (0.81 - 1.28)	0.870
135+	1.33 (1.07 - 1.65)	0.010
Donor risk index score		<0.001
<0.95	-	-
0.95-1.04	1.47 (0.75 - 2.90)	0.259
1.05-1.49	0.82 (0.39 - 1.70)	0.592
1.50+	0.68 (0.29 - 1.59)	0.380

Results are from a multivariable binary logistic regression, using a backwards stepwise approach to variable selection. Factors considered for inclusion in the model are detailed in Supplementary Table 1. The final model was based on N=10,285 organs (N=851 discarded) after excluding cases with missing data for any of the factors considered. An alternative model, using a replace-with-mean approach to maximise the included sample size, is reported in Supplementary Table 2. Bold P-values are significant at P<0.05.

Table 2a – Associations between donor/recipient factors and QOP assigned by the implanting team

	Total N	Grade 1	QOP – Implanting Team Grade 2	Grade 3	Grade 4	P- Value
Donor Factors						
Age (Years)	23035	50 (38-59)	53 (43-62)	53 (42-62)	54 (44-63)	<0.001
Sex (% Male)	23030	10430 (52.6%)	1244 (56.9%)	273 (59.0%)	322 (59.9%)	<0.001
Ethnicity	23001					0.886*
White		19055 (96.2%)	2091 (95.6%)	443 (95.7%)	521 (96.7%)	
Asian		351 (1.8%)	45 (2.1%)	9 (1.9%)	8 (1.5%)	
Black		191 (1.0%)	27 (1.2%)	7 (1.5%)	5 (0.9%)	
Mixed/Other		215 (1.1%)	24 (1.1%)	4 (0.9%)	5 (0.9%)	
Body mass index (kg/m ²)	22372	25.5 (22.9-28.7)	26.3 (23.7-30.0)	26.0 (23.6-29.4)	26.7 (23.9-30.2)	<0.001
Diabetes	22416	1018 (5.3%)	140 (6.6%)	30 (6.6%)	33 (6.3%)	0.006
Hypertension	22182	4551 (23.8%)	628 (30.1%)	132 (29.7%)	177 (34.2%)	<0.001
Smoking history	22364	9358 (48.5%)	1015 (47.8%)	212 (46.9%)	243 (47.2%)	0.309
Hepatitis C virus (Positive)	22956	23 (0.1%)	0 (0.0%)	4 (0.9%)	0 (0.0%)	0.783
Cytomegalovirus (Positive)	22760	9807 (50.0%)	1072 (49.8%)	229 (49.9%)	268 (50.0%)	0.855
Cause of death	23035					<0.001*
Intracranial haemorrhage		12536 (63.2%)	1406 (64.3%)	332 (71.6%)	351 (65.1%)	
Hypoxic brain damage		3356 (16.9%)	367 (16.8%)	58 (12.5%)	99 (18.4%)	
Trauma		2203 (11.1%)	206 (9.4%)	41 (8.8%)	40 (7.4%)	
Other		1750 (8.8%)	208 (9.5%)	33 (7.1%)	49 (9.1%)	
Type	23035					<0.001
DBD		14442 (72.8%)	1329 (60.8%)	301 (64.9%)	307 (57.0%)	
DCD		5403 (27.2%)	858 (39.2%)	163 (35.1%)	232 (43.0%)	
Liver retrieved	23033	15320 (77.2%)	1528 (69.9%)	342 (73.7%)	359 (66.6%)	<0.001
Adrenaline	23035	1995 (10.1%)	207 (9.5%)	39 (8.4%)	51 (9.5%)	0.176
Terminal creatinine (mmol/L)	21393	75 (59-96)	78 (60-101)	81 (61-103)	77 (61-103)	<0.001
Last temperature (°C)	14125	36.6 (36.0-37.1)	36.7 (36.0-37.4)	36.8 (36.0-37.1)	36.8 (36.0-37.4)	<0.001
Last systolic blood pressure (mmHg)	15292	120 (109-134)	120 (110-137)	124 (112-143)	123 (110-143)	<0.001
Last diastolic blood pressure (mmHg)	15247	69 (60-78)	70 (60-78)	70 (60-80)	69 (60-80)	0.153
Hospital stay (Days)	22668	3.2**	3.7**	3.4**	3.6**	<0.001
Donor risk index	21646	1.04 (0.96-1.44)	1.10 (0.99-1.51)	1.09 (0.99-1.51)	1.30 (1.01-1.55)	<0.001
Recipient Factors						
Age (Years)	23035	50 (40-60)	52 (41-61)	52 (43-61)	52 (42-62)	<0.001
Sex (% Male)	23026	12339 (62.2%)	1439 (65.9%)	310 (67.0%)	361 (67.0%)	<0.001
Body mass index (kg/m ²)	13257	25.9 (22.9 – 29.4)	26.5 (23.3 – 29.9)	27.2 (24.0 – 30.6)	26.2 (23.0 – 29.9)	<0.001
Ethnicity	22848					0.120*
White		15546 (79.0%)	1706 (78.4%)	353 (76.2%)	439 (81.8%)	
Asian		2636 (13.4%)	281 (12.9%)	65 (14.0%)	52 (9.7%)	
Black		1241 (6.3%)	155 (7.1%)	35 (7.6%)	37 (6.9%)	
Mixed/Other		250 (1.3%)	33 (1.5%)	10 (2.2%)	9 (1.7%)	
Diabetes	23035	1495 (7.5%)	198 (9.1%)	31 (6.7%)	59 (10.9%)	0.005
Hepatitis C virus (Positive)	17340	109 (0.7%)	12 (0.7%)	3 (0.8%)	2 (0.5%)	0.660
Cytomegalovirus (Positive)	20650	9309 (52.5%)	1053 (52.8%)	224 (52.8%)	254 (51.4%)	0.934
Waiting time (Days)	23016	779 (325-1383)	793 (354-1368)	839 (422-1425)	711 (314-1330)	0.342
Dialysis status at transplant	20813					0.028*
Haemodialysis		12455 (69.5%)	1410 (71.8%)	313 (72.0%)	350 (72.3%)	
Peritoneal dialysis		5441 (30.3%)	551 (28.1%)	120 (27.6%)	131 (27.1%)	
Pre-emptive		35 (0.2%)	2 (0.1%)	2 (0.5%)	3 (0.6%)	
Calculated reaction frequency at transplant	23035					0.555
0%		13306 (67.0%)	1456 (66.6%)	304 (65.5%)	361 (67.0%)	
1-85%		4874 (24.6%)	545 (24.9%)	123 (26.5%)	131 (24.3%)	
>85%		1665 (8.4%)	186 (8.5%)	37 (8.0%)	47 (8.7%)	

Data are reported as median (IQR), with p-values from Jonckheere-Terpstra tests, or as N (%), with p-values from Kendall's tau, unless stated otherwise. Bold p-values are significant at p<0.05. *p-Value from Chi-square test. **Reported as means to highlight the differences between groups.

Table 2b – Associations between transplantation/organ factors and QOP assigned by the implanting team

	Total N	QOP – Implanting Team				P- Value
		Grade 1	Grade 2	Grade 3	Grade 4	
Damage to organ	22873	2283 (11.6%)	423 (19.5%)	96 (20.8%)	95 (17.8%)	<0.001
Transplant year	23035					<0.001
2000-2004		5115 (25.8%)	436 (19.9%)	99 (21.3%)	78 (14.5%)	
2005-2009		4876 (24.6%)	601 (27.5%)	134 (28.9%)	164 (30.4%)	
2010-2013		5075 (25.6%)	651 (29.8%)	130 (28.0%)	168 (31.2%)	
2014-2016		4779 (24.1%)	499 (22.8%)	101 (21.8%)	129 (23.9%)	
Number of renal arteries	22963					0.192
1		15769 (79.7%)	1715 (78.8%)	364 (78.4%)	422 (78.4%)	
2		3636 (18.4%)	418 (19.2%)	90 (19.4%)	109 (20.3%)	
3+		379 (1.9%)	44 (2.0%)	10 (2.2%)	7 (1.3%)	
Number of centres offered	7129					0.422
1		4689 (76.6%)	552 (79.5%)	97 (68.3%)	134 (78.8%)	
2		924 (15.1%)	93 (13.4%)	30 (21.1%)	23 (13.5%)	
3+		510 (8.3%)	49 (7.1%)	15 (10.6%)	13 (7.6%)	
Perfusate used	22160					<0.001*
Wisconsin		9929 (52.0%)	1205 (57.3%)	255 (57.2%)	319 (61.0%)	
Marshalls		8949 (46.9%)	878 (41.8%)	190 (42.6%)	200 (38.2%)	
Other		211 (1.1%)	19 (0.9%)	1 (0.2%)	4 (0.8%)	
Machine perfusion	21373					0.181*
No		17351 (94.2%)	1906 (94.3%)	407 (94.2%)	470 (93.6%)	
Hypothermic		1025 (5.6%)	113 (5.6%)	25 (5.8%)	28 (5.6%)	
Normothermic		41 (0.2%)	3 (0.1%)	0 (0.0%)	4 (0.8%)	
Fast track	23035	711 (3.6%)	89 (4.1%)	19 (4.1%)	30 (5.6%)	0.045
Cold ischaemia time (hrs)	22840	16.0 (12.8- 19.6)	15.8 (12.4- 19.2)	16.0 (13.0- 19.9)	15.6 (12.8- 19.1)	0.012
Mismatch Level	23034					<0.001
1		2898 (14.6%)	283 (12.9%)	63 (13.6%)	66 (12.2%)	
2		7495 (37.8%)	715 (32.7%)	130 (28.0%)	198 (36.7%)	
3		8148 (41.1%)	999 (45.7%)	229 (49.4%)	233 (43.2%)	
4		1303 (6.6%)	190 (8.7%)	42 (9.1%)	42 (7.8%)	

Data are reported as median (IQR), with p-values from Jonckheere-Terpstra tests, or as N (%), with p-values from Kendall's tau, unless stated otherwise. Bold p-values are significant at p<0.05. *p-Value from Chi-square test.

Table 3 – Associations between graft outcomes and quality of perfusion

	Total N	Quality of perfusion				P- Value
		Grade 1	Grade 2	Grade 3	Grade 4	
Quality of perfusion Assigned by Retrieval Team						
Graft Function	19489					<0.001
Primary Function		12583(70.7%)	644 (57.5%)	110 (51.6%)	199 (54.4%)	
Delayed graft function		4714 (26.5%)	426 (38.0%)	89 (41.8%)	153 (41.8%)	
Primary non-function		493 (2.8%)	50 (4.5%)	14 (6.6%)	14 (3.8%)	
Graft Survival	23475					0.026
Rate at five years		85.0%	83.0%	78.0%	84.0%	
Long-Term Graft Survival*	22383					0.454
Rate at five years		88.6%	87.9%	83.6%	88.9%	
Hazard ratio (95% CI)		-	1.04 (0.88- 1.22)	1.33 (0.93- 1.90)	1.05 (0.78- 1.40)	
P-Value (vs. Grade 1)		-	0.655	0.123	0.752	
Quality of perfusion Assigned by Implanting Team						
Graft Function	19158					<0.001
Primary function		11801(71.9%)	1069 (57.2%)	206 (53.4%)	239 (49.3%)	
Delayed graft function		4224 (25.7%)	702 (37.5%)	142 (36.8%)	216 (44.5%)	
Primary non-function		392 (2.4%)	99 (5.3%)	38 (9.8%)	30 (6.2%)	
Graft Survival	23001					<0.001
Rate at five Years		85.8%	79.8%	71.0%	78.5%	
Long-Term Graft Survival*	21948					<0.001
Rate at five Years		88.9%	85.4%	82.4%	86.6%	
Hazard ratio (95% CI)		-	1.28 (1.15- 1.42)	1.43 (1.15- 1.79)	1.12 (0.90- 1.39)	
P-Value (vs. Grade 1)		-	<0.001	0.001	0.326	

Categorical outcomes are reported as N (%), with p-values from Chi-square tests. Survival outcomes are reported as Kaplan-Meier estimated rates at five years, as well as hazard ratios with 95% confidence intervals from univariable Cox regression models, relative to QOP grade 1. *Long-term graft survival excluded patients with graft failure or loss of follow up within 30 days, to negate the difference in PNF between the groups. Bold p-values are significant at p<0.05.

Table 4 – Summary of multivariable analyses by quality of perfusion

Outcome	Type of Model	Included N		Overall P-Value	Quality of perfusion			
		Total	Outcomes		Grade 1	Grade 2	Grade 3	Grade 4
Quality of perfusion assigned by retrieval team								
Delayed graft function*	BLR	10,160	2,841	0.019	-	1.28 (1.06 - 1.54) (P=0.009)	1.24 (0.83 - 1.84) (P=0.292)	1.31 (0.96 - 1.78) (P=0.090)
Primary non-function	BLR	7,794	465	0.001	-	1.66 (1.19 - 2.32) (P=0.003)	2.54 (1.32 - 4.89) (P=0.005)	1.34 (0.71 - 2.55) (P=0.371)
Long-term graft survival**	CR	12,342	2,028	0.111	-	0.97 (0.77 - 1.22) (P=0.811)	1.79 (1.10 - 2.89) (P=0.018)	1.14 (0.76 - 1.71) (P=0.529)
Quality of perfusion assigned by implanting team								
Delayed graft Function*	BLR	18,599	5,284	<0.001	-	1.50 (1.34 - 1.67) (P<0.001)	1.54 (1.22 - 1.94) (P<0.001)	2.08 (1.69 - 2.54) (P<0.001)
Primary non-function	BLR	19,158	559	<0.001	-	2.02 (1.60 - 2.54) (P<0.001)	3.65 (2.55 - 5.23) (P<0.001)	2.42 (1.64 - 3.57) (P<0.001)
Long-term graft survival**	CR	21,955	3,526	0.002	-	1.18 (1.06 - 1.31) (P=0.003)	1.36 (1.09 - 1.69) (P=0.007)	1.04 (0.83 - 1.29) (P=0.749)

Results are from multivariable binary logistic regression (BLR), or Cox regression (CR) models, as applicable. A backwards stepwise approach was used for variable selection, and the full list of factors considered for inclusion are detailed in Table S1. The analyses reported for the QOP assigned by the retrieval team use a complete cases approach, whilst analysis of the QOP assigned by the implanting team use a replace-with-mean approach. The full models, and further details about the methodology are reported in Tables S3a-c and S4a-e. Data are reported as odds ratios (BLR) or hazard ratios (CR) with 95% CIs, and bold p-values are significant at p<0.05. *Analyses of DGF exclude patients with PNF. **For graft survival, patients with graft failure or loss of follow up within 30 days were excluded, to negate the difference in PNF between the groups. DGF/PNF – delayed graft function/primary non-function

Supplementary Table 1 – Factors considered for inclusion in multivariable analyses

	Category			
	1	2	3	4
Multivariable Analyses of QOP Assigned by Retrieval or Implanting Teams				
Donor Age (Years)	<40	40-49	50-59	60+
Donor Sex	Male	Female	-	-
Donor BMI (kg/m ²)	18.5-24.9	<18.5	25.0-29.9	30.0+
Donor Ethnicity	White	Asian	Black	Mixed/Other
Donor terminal creatinine (mmol/L)	<60	60-74	75-99	100+
Donor last temperature (°C)*	<36.0	36.0-36.4	36.5-36.9	37.0+
Donor last systolic blood pressure (mmHg)*	<110	110-119	120-134	135+
Donor last diastolic blood pressure (mmHg)*	<60	60-69	70-79	80+
Donor cause of death	ICH	Hypoxic BD	Trauma	Other
Donor history of diabetes	No	Yes	-	-
Donor history of hypertension	No	Yes	-	-
Donor type	DBD	DCD	-	-
Donor liver retrieved	No	Yes	-	-
Donor smoking history	No	Yes	-	-
Donor hepatitis C virus	Negative	Positive	-	-
Donor cytomegalovirus	Negative	Positive	-	-
Donor hospital stay (Days)	1	2	3-4	5+
Donor adrenaline	No	Yes	-	-
Donor risk index	<0.95	0.95-1.04	1.05-1.49	1.50+
Number of renal arteries	1	2	3+	-
Transplant year**	2000-2004	2005-2009	2010-2013	2014-2016
Damage to organ**	No	Yes	-	-
Multivariable Analysis of QOP by the Implanting Team Only				
Recipient age (Years)	<40	40-49	50-59	60+
Recipient sex	Male	Female	-	-
Recipient ethnicity	White	Asian	Black	Mixed/Other
Recipient body mass index (kg/m ²)*	18.5-24.9	<18.5	25.0-29.9	30.0+
Recipient diabetes	No	Yes	-	-
Recipient Hepatitis C virus*	Negative	Positive	-	-
Recipient Cytomegalovirus *	Negative	Positive	-	-
Recipient waiting time (Months)	<12	12-23	24-47	48+
Recipient dialysis at transplant	Haemodialysis	Peritoneal	Not on Dialysis	-
Mismatch level	1	2	3	4
Cold ischaemia time (Hours)	<13	13-15	16-19	20+
Calculated reaction frequency at transplant	0%	1-85%	>85%	-
Perfusate used	Wisconson	Marshalls	Other	-
Machine perfusion**	No	Hypothermic	Normothermic	-
Fast track offering scheme	No	Yes	-	-

Multivariable analyses for the QOP assigned by the retrieval team considered all factors in the upper section of the table for inclusion in the models, as these were known at the time that the organ was retrieved. Analyses for the QOP assigned by the implanting team additionally included the factors from the lower section of the table. Category 1 represents the reference category for each variable. *Data were unavailable for >10% of cases, hence these factors were removed from consideration in the complete-cases models if not selected by the stepwise procedure and the model re-run, in order to maximise the included sample size. **Analyses of discard rates excluded the transplant year and organ damage, as these were not recorded for discarded organs, and additionally considered machine perfusion for inclusion in the model.

Supplementary Table 2 - Multivariable analysis of predictors of organ discard using a replace-with-mean approach to missing data

	Odds Ratio (95% CI)	P-Value
Quality of perfusion (Retrieval Team)		<0.001
Grade 1	-	-
Grade 2	2.08 (1.81 - 2.40)	<0.001
Grade 3	7.45 (6.10 - 9.10)	<0.001
Grade 4	3.69 (3.03 - 4.48)	<0.001
Number of centres offered		<0.001
1	-	-
2	1.80 (1.51 - 2.15)	<0.001
3+	2.63 (2.15 - 3.20)	<0.001
Machine perfusion		0.002
No	-	-
Hypothermic	0.73 (0.61 - 0.87)	<0.001
Normothermic	0.78 (0.27 - 2.23)	0.645
Donor age (Years)		<0.001
<40	-	-
40-49	1.68 (1.43 - 1.99)	<0.001
50-59	2.18 (1.86 - 2.55)	<0.001
60+	4.16 (3.58 - 4.84)	<0.001
Donor history of diabetes	1.36 (1.17 - 1.58)	<0.001
Donor history of hypertension	1.30 (1.18 - 1.43)	<0.001
Donor hepatitis C virus (Positive)	29.70 (18.35 - 48.07)	<0.001
Donor cytomegalovirus (Positive)	1.12 (1.03 - 1.23)	0.010
Donor cause of death		<0.001
Intracranial Haemorrhage	-	-
Hypoxic Brain Damage	1.03 (0.91 - 1.15)	0.660
Trauma	0.61 (0.50 - 0.75)	<0.001
Other	1.42 (1.23 - 1.64)	<0.001
Donor type (DCD)	1.74 (1.55 - 1.96)	<0.001
Donor liver retrieved	0.73 (0.65 - 0.81)	<0.001
Donor terminal creatinine (mmol/L)		<0.001
<60	-	-
60-74	1.14 (0.99 - 1.32)	0.065
75-99	1.46 (1.29 - 1.65)	<0.001
100+	2.24 (1.97 - 2.55)	<0.001
Donor last temperature (°C)		0.015
<36.0	-	-
36.0-36.4	0.79 (0.66 - 0.93)	0.006
36.5-36.9	0.81 (0.70 - 0.93)	0.002
37.0+	0.82 (0.70 - 0.95)	0.008
Donor last diastolic blood pressure (mmHg)		0.013
<60	-	-
60-69	1.19 (1.04 - 1.36)	0.010
70-79	1.18 (1.00 - 1.38)	0.045
80+	1.02 (0.86 - 1.21)	0.830

Results are from a multivariable binary logistic regression, using a backwards stepwise approach to variable selection. Factors considered for inclusion in the model are detailed in Supplementary Table 1. Instances of missing data were replaced with the mean for continuous variables, or the mode for categorical variables. The final model was based on N=31,167 cases (2,556 outcomes). Bold p-values are significant at p<0.05

Supplementary Table 3a – Multivariable analyses of retrieval factors predictive of DGF

	Complete Cases		Replace-With-Mean	
	Odds Ratio (95% CI)	p-Value	Odds Ratio (95% CI)	p-Value
QOP (Retrieval Team)		0.019		<0.001
Grade 1	-	-	-	-
Grade 2	1.28 (1.06 - 1.54)	0.009	1.25 (1.09 - 1.43)	0.001
Grade 3	1.24 (0.83 - 1.84)	0.292	1.42 (1.06 - 1.91)	0.019
Grade 4	1.31 (0.96 - 1.78)	0.090	1.46 (1.16 - 1.83)	0.001
Donor Age (Years)		0.004		<0.001
<40	-	-	-	-
40-49	1.41 (0.97 - 2.04)	0.073	1.53 (1.29 - 1.83)	<0.001
50-59	1.63 (1.13 - 2.36)	0.010	1.72 (1.45 - 2.04)	<0.001
60+	1.30 (0.86 - 1.96)	0.221	1.76 (1.43 - 2.16)	<0.001
Donor Sex (Female)	0.89 (0.80 - 0.98)	0.019	0.87 (0.81 - 0.94)	<0.001
Donor BMI (kg/m ²)		0.009		0.014
<18.5	0.86 (0.59 - 1.25)	0.415	1.00 (0.81 - 1.25)	0.976
18.5-24.9	-	-	-	-
25.0-29.9	1.16 (1.04 - 1.29)	0.007	1.09 (1.01 - 1.18)	0.024
30.0+	1.21 (1.06 - 1.38)	0.005	1.17 (1.06 - 1.30)	0.002
Donor Terminal Creatinine (mmol/L)		<0.001		<0.001
<60	-	-	-	-
60-74	1.10 (0.96 - 1.26)	0.172	1.07 (0.97 - 1.19)	0.196
75-99	1.10 (0.97 - 1.26)	0.147	1.14 (1.03 - 1.25)	0.010
100+	1.76 (1.53 - 2.02)	<0.001	1.80 (1.62 - 2.01)	<0.001
Donor Last SBP (mmHg)		0.074		0.003
<110	-	-	-	-
110-119	0.96 (0.84 - 1.10)	0.574	0.97 (0.86 - 1.10)	0.661
120-134	0.98 (0.86 - 1.11)	0.768	1.04 (0.94 - 1.14)	0.435
135+	1.12 (0.99 - 1.28)	0.077	1.19 (1.06 - 1.34)	0.003
Donor Cause of Death		NS		<0.001
Intercranial Haemorrhage	-	-	-	-
Hypoxic Brain Damage	-	-	1.05 (0.95 - 1.15)	0.366
Trauma	-	-	0.80 (0.71 - 0.91)	<0.001
Other	-	-	1.11 (0.98 - 1.25)	0.096
Donor History of Diabetes	-	NS	1.16 (1.01 - 1.34)	0.040
Donor History of Hypertension	-	NS	1.13 (1.03 - 1.25)	0.011
Donor Type (DCD)	2.77 (2.48 - 3.09)	<0.001	2.33 (2.13 - 2.55)	<0.001
Donor Liver Retrieved	-	NS	0.86 (0.79 - 0.94)	0.001
Donor Hospital Stay (Days)		NS		<0.001
1	-	-	-	-
2	-	-	1.02 (0.93 - 1.13)	0.645
3-4	-	-	1.21 (1.10 - 1.33)	<0.001
5+	-	-	1.26 (1.14 - 1.38)	<0.001
Donor Risk Index		<0.001		0.045
<0.95	-	-	-	-
0.95-1.04	0.98 (0.68 - 1.43)	0.934	0.91 (0.76 - 1.10)	0.338
1.05-1.49	1.26 (0.86 - 1.84)	0.238	1.00 (0.84 - 1.18)	0.971
1.50+	1.86 (1.20 - 2.87)	0.005	1.22 (0.96 - 1.55)	0.103
Year of Transplant		<0.001		<0.001
2000-2004	-	-	-	-
2005-2009	0.84 (0.73 - 0.97)	0.016	0.85 (0.77 - 0.94)	0.002
2010-2013	0.65 (0.56 - 0.75)	<0.001	0.62 (0.55 - 0.69)	<0.001
2014-2016	0.47 (0.41 - 0.55)	<0.001	0.44 (0.39 - 0.50)	<0.001
Damage to Organ	-	NS	1.10 (1.00 - 1.21)	0.058

Results are from multivariable binary logistic regression models, with DGF as the dependent variable. Patients with PNF were excluded from the analysis.

Variable selection was by a backwards stepwise approach, with the factors described in Supplementary Table 1 considered for inclusion, alongside the QOP.

The complete cases analysis was based on N=10,160 cases (2,841 outcomes), whilst the replace-with-mean analysis included N=18,918 (5,382 outcomes).

Bold p-values are significant at p<0.05. NS=Not selected for inclusion in the final model.

Supplementary Table 3b – Multivariable analyses of retrieval factors predictive of PNF

	Complete Cases		Replace-With-Mean	
	Odds Ratio (95% CI)	p-Value	Odds Ratio (95% CI)	p-Value
QOP (Retrieval Team)		0.001		<0.001
Grade 1	-	-	-	-
Grade 2	1.66 (1.19 - 2.32)	0.003	1.57 (1.16 - 2.12)	0.003
Grade 3	2.54 (1.32 - 4.89)	0.005	2.59 (1.49 - 4.53)	<0.001
Grade 4	1.34 (0.71 - 2.55)	0.371	1.43 (0.83 - 2.47)	0.198
Donor Age (Years)		<0.001		<0.001
<40	-	-	-	-
40-49	1.52 (1.09 - 2.12)	0.013	1.63 (1.21 - 2.19)	0.001
50-59	1.80 (1.31 - 2.46)	<0.001	1.85 (1.40 - 2.45)	<0.001
60+	2.29 (1.67 - 3.12)	<0.001	2.35 (1.77 - 3.12)	<0.001
Donor Terminal Creatinine (mmol/L)		0.017		<0.001
<60	-	-	-	-
60-74	1.36 (1.03 - 1.79)	0.033	1.35 (1.03 - 1.76)	0.031
75-99	1.54 (1.18 - 2.01)	0.002	1.63 (1.28 - 2.08)	<0.001
100+	1.36 (1.02 - 1.82)	0.035	1.63 (1.25 - 2.14)	<0.001
Donor Last SBP (mmHg)		<i>NS</i>		0.031
<110	-	-	-	-
110-119	-	-	1.07 (0.76 - 1.50)	0.704
120-134	-	-	1.33 (1.02 - 1.73)	0.038
135+	-	-	1.49 (1.09 - 2.02)	0.011
Donor Cause of Death		0.003		0.002
<i>Intercranial Haemorrhage</i>	-	-	-	-
<i>Hypoxic Brain Damage</i>	0.74 (0.56 - 0.98)	0.035	0.75 (0.58 - 0.96)	0.022
<i>Trauma</i>	0.57 (0.38 - 0.87)	0.009	0.59 (0.41 - 0.86)	0.005
<i>Other</i>	0.62 (0.41 - 0.93)	0.020	0.67 (0.46 - 0.95)	0.026
Donor Smoking History	-	<i>NS</i>	1.16 (0.98 - 1.38)	0.088
Donor CMV (Positive)	0.77 (0.64 - 0.93)	0.008	0.82 (0.69 - 0.97)	0.021
Year of Transplant		0.009		0.061
2000-2004	-	-	-	-
2005-2009	0.81 (0.62 - 1.06)	0.120	0.88 (0.69 - 1.12)	0.305
2010-2013	0.64 (0.48 - 0.84)	0.002	0.73 (0.57 - 0.94)	0.016
2014-2016	0.67 (0.50 - 0.90)	0.007	0.74 (0.57 - 0.97)	0.031
Damage to Organ	1.80 (1.43 - 2.26)	<0.001	1.72 (1.39 - 2.12)	<0.001

Results are from multivariable binary logistic regression models, with PNF as the dependent variable. Variable selection was by a backwards stepwise approach, with the factors described in Supplementary Table 1 considered for inclusion, alongside the QOP. The complete cases analysis was based on N=7,794 cases (465 outcomes), whilst the replace-with-mean analysis included N=19,489 (571 outcomes). Bold p-values are significant at p<0.05. NS=Not selected for inclusion in the final model.

Supplementary Table 3c – Multivariable analyses of retrieval factors predictive of long-term graft survival

	Complete Cases		Replace-With-Mean	
	Hazard Ratio (95% CI)	p-Value	Hazard Ratio (95% CI)	p-Value
QOP (Retrieval Team)		0.111		0.346
<i>Grade 1</i>	-	-	-	-
<i>Grade 2</i>	0.97 (0.77 - 1.22)	0.811	1.01 (0.86 - 1.18)	0.923
<i>Grade 3</i>	1.79 (1.10 - 2.89)	0.018	1.37 (0.95 - 1.96)	0.090
<i>Grade 4</i>	1.14 (0.76 - 1.71)	0.529	1.11 (0.83 - 1.48)	0.489
Donor Age (Years)		<0.001		<0.001
<40	-	-	-	-
40-49	1.36 (1.18 - 1.56)	<0.001	1.30 (1.18 - 1.44)	<0.001
50-59	1.53 (1.34 - 1.75)	<0.001	1.47 (1.33 - 1.62)	<0.001
60+	2.20 (1.92 - 2.53)	<0.001	2.11 (1.91 - 2.34)	<0.001
Donor Ethnicity		0.001		<0.001
<i>White</i>	-	-	-	-
<i>Asian</i>	1.64 (1.22 - 2.21)	0.001	1.48 (1.18 - 1.85)	0.001
<i>Black</i>	1.63 (1.07 - 2.47)	0.022	1.61 (1.19 - 2.16)	0.002
<i>Mixed/Other</i>	1.04 (0.63 - 1.74)	0.872	1.19 (0.84 - 1.69)	0.325
Donor Last Temperature (°C)		NS		0.072
<36.0	-	-	-	-
36.0-36.4	-	-	0.95 (0.83 - 1.09)	0.492
36.5-36.9	-	-	1.04 (0.92 - 1.18)	0.554
37.0+	-	-	0.94 (0.83 - 1.08)	0.385
Donor Terminal Creatinine (mmol/L)		0.029		NS
<60	-	-	-	-
60-74	1.01 (0.88 - 1.15)	0.936	-	-
75-99	0.98 (0.86 - 1.12)	0.773	-	-
100+	1.15 (1.01 - 1.32)	0.038	-	-
Donor Last SBP (mmHg)		0.038		NS
<110	-	-	-	-
110-119	1.13 (0.99 - 1.28)	0.072	-	-
120-134	1.00 (0.88 - 1.13)	0.986	-	-
135+	1.15 (1.01 - 1.31)	0.038	-	-
Donor History of Diabetes	1.32 (1.09 - 1.59)	0.005	1.18 (1.01 - 1.37)	0.032
Donor History of Hypertension	1.18 (1.06 - 1.31)	0.002	1.19 (1.10 - 1.29)	<0.001
Donor CMV (Positive)		NS	1.06 (0.99 - 1.14)	0.087
Number of Renal Arteries		NS		0.068
1	-	-	-	-
2	-	-	1.07 (0.99 - 1.16)	0.105
3+	-	-	1.23 (0.98 - 1.56)	0.078
Year of Transplant		<0.001		<0.001
2000-2004	-	-	-	-
2005-2009	0.80 (0.72 - 0.90)	<0.001	0.82 (0.76 - 0.89)	<0.001
2010-2013	0.71 (0.62 - 0.81)	<0.001	0.72 (0.65 - 0.80)	<0.001
2014-2016	0.55 (0.45 - 0.68)	<0.001	0.67 (0.58 - 0.78)	<0.001
Damage to Organ	1.18 (1.04 - 1.33)	0.010	1.17 (1.06 - 1.29)	0.001

Results are from multivariable Cox regression models. Patients with graft failure or lost to follow up within 30 days of transplant were excluded, to ensure that the proportional hazards assumption was met. Variable selection was by a backwards stepwise approach, with the factors described in Supplementary Table 1 considered for inclusion, alongside the QOP. The complete cases analysis was based on N=12,342 cases (2,028 outcomes), whilst the replace-with-mean analysis included N=22,383 (3,620 outcomes). Bold p-values are significant at p<0.05. NS=Not selected for inclusion in the final model.

Supplementary Table 4a – Multivariable analyses of factors predictive of DGF (part 1)

	Complete Cases		Replace-with-Mean	
	Odds Ratio (95% CI)	p-Value	Odds Ratio (95% CI)	p-Value
QOP (Implanting Team)		<0.001		<0.001
Grade 1	-	-	-	-
Grade 2	2.02 (1.59 - 2.56)	<0.001	1.50 (1.34 - 1.67)	<0.001
Grade 3	1.39 (0.79 - 2.46)	0.256	1.54 (1.22 - 1.94)	<0.001
Grade 4	1.64 (0.98 - 2.75)	0.062	2.08 (1.69 - 2.54)	<0.001
Machine Perfusion		0.003		<0.001
No	-	-	-	-
Hypothermic	0.59 (0.42 - 0.83)	0.003	0.69 (0.59 - 0.80)	<0.001
Normothermic	0.17 (0.02 - 1.49)	0.109	0.61 (0.26 - 1.42)	0.253
Donor Age (Years)		0.024		<0.001
<40	-	-	-	-
40-49	1.28 (0.67 - 2.44)	0.449	1.47 (1.23 - 1.75)	<0.001
50-59	1.49 (0.79 - 2.82)	0.219	1.63 (1.37 - 1.94)	<0.001
60+	0.93 (0.46 - 1.85)	0.830	1.64 (1.33 - 2.02)	<0.001
Donor Sex (Female)	-	NS	0.87 (0.81 - 0.94)	<0.001
Donor BMI (kg/m ²)		NS		0.015
<18.5	-	-	1.03 (0.83 - 1.29)	0.793
18.5-24.9	-	-	-	-
25.0-29.9	-	-	1.11 (1.02 - 1.20)	0.012
30.0+	-	-	1.17 (1.05 - 1.30)	0.003
Donor Terminal Creatinine (mmol/L)		<0.001		<0.001
<60	-	-	-	-
60-74	1.12 (0.90 - 1.39)	0.297	1.08 (0.97 - 1.20)	0.144
75-99	1.00 (0.80 - 1.23)	0.963	1.13 (1.03 - 1.25)	0.014
100+	1.86 (1.49 - 2.33)	<0.001	1.83 (1.64 - 2.04)	<0.001
Donor Last Temperature (°C)		0.030		NS
<36.0	-	-	-	-
36.0-36.4	1.01 (0.79 - 1.29)	0.943	-	-
36.5-36.9	0.93 (0.71 - 1.22)	0.603	-	-
37.0+	1.25 (1.00 - 1.57)	0.047	-	-
Donor Last SBP (mmHg)		NS		0.017
<110	-	-	-	-
110-119	-	-	0.95 (0.83 - 1.08)	0.402
120-134	-	-	1.02 (0.92 - 1.13)	0.684
135+	-	-	1.15 (1.02 - 1.29)	0.026
Donor Cause of Death		NS		<0.001
Intercranial Haemorrhage	-	-	-	-
Hypoxic Brain Damage	-	-	1.06 (0.96 - 1.17)	0.224
Trauma	-	-	0.80 (0.70 - 0.91)	0.001
Other	-	-	1.12 (0.99 - 1.27)	0.077
Donor History of Diabetes	-	NS	1.19 (1.02 - 1.37)	0.022
Donor History of Hypertension	-	NS	1.12 (1.01 - 1.24)	0.025
Donor Type (DCD)	3.27 (2.64 - 4.05)	<0.001	2.77 (2.52 - 3.06)	<0.001
Donor Liver Retrieved	0.79 (0.65 - 0.97)	0.021	0.82 (0.75 - 0.90)	<0.001
Donor Hospital Stay (Days)		NS		<0.001
1	-	-	-	-
2	-	-	1.03 (0.93 - 1.13)	0.614
3-5	-	-	1.19 (1.08 - 1.31)	0.001
5+	-	-	1.25 (1.14 - 1.38)	<0.001
Donor Risk Index		<0.001		0.053
<0.95	-	-	-	-
0.95-1.04	1.05 (0.55 - 2.00)	0.889	0.94 (0.78 - 1.14)	0.537
1.05-1.49	1.44 (0.76 - 2.76)	0.266	1.04 (0.87 - 1.23)	0.695
1.50+	3.00 (1.47 - 6.13)	0.003	1.27 (0.99 - 1.62)	0.058

Results are from multivariable binary logistic regression models, with DGF as the dependent variable. Patients with PNF were excluded from the analysis.

The remainder of the model is reported in Supplementary Table 4b. Variable selection was by a backwards stepwise approach, with the factors described in Supplementary Table 1 considered for inclusion, alongside the QOP. The complete cases analysis was based on N=3,698 cases (1,132 outcomes), whilst the replace-with-mean analysis included N=18,599 (5,284 outcomes). Bold p-values are significant at p<0.05. NS=Not selected for inclusion in the final model.

Supplementary Table 4b – Multivariable analyses of factors predictive of DGF (part 2)

	Complete Cases		Replace-with-Mean	
	Odds Ratio (95% CI)	p-Value	Odds Ratio (95% CI)	p-Value
Recipient Age (Years)		0.021		<i>NS</i>
<40	-	-	-	-
40-49	0.72 (0.56 - 0.92)	0.009	-	-
50-59	0.74 (0.58 - 0.94)	0.014	-	-
60+	0.87 (0.67 - 1.12)	0.284	-	-
Recipient Sex (Female)	0.68 (0.57 - 0.80)	<0.001	0.75 (0.70 - 0.81)	<0.001
Recipient Ethnicity		0.024		<0.001
White	-	-	-	-
Asian	1.12 (0.90 - 1.41)	0.315	1.01 (0.91 - 1.13)	0.796
Black	1.57 (1.17 - 2.11)	0.003	1.52 (1.34 - 1.74)	<0.001
Mixed/Other	0.95 (0.49 - 1.82)	0.868	0.76 (0.56 - 1.04)	0.082
Recipient BMI (kg/m ²)		<0.001		<0.001
<18.5	1.19 (0.71 - 2.02)	0.510	0.90 (0.66 - 1.22)	0.501
18.5-24.9	-	-	-	-
25.0-29.9	1.20 (1.00 - 1.44)	0.050	1.08 (0.99 - 1.18)	0.066
30.0+	1.73 (1.41 - 2.12)	<0.001	1.55 (1.39 - 1.74)	<0.001
Recipient Diabetes	-	<i>NS</i>	1.29 (1.14 - 1.45)	<0.001
Recipient CMV (Positive)	-	<i>NS</i>	1.10 (1.02 - 1.18)	0.011
Recipient Waiting Time (Months)		0.017		<0.001
<12	-	-	-	-
12-23	1.14 (0.88 - 1.47)	0.339	1.28 (1.15 - 1.42)	<0.001
24-47	1.40 (1.11 - 1.77)	0.005	1.61 (1.46 - 1.77)	<0.001
48+	1.42 (1.09 - 1.85)	0.010	1.70 (1.52 - 1.89)	<0.001
Recipient Dialysis at Transplant		<0.001		<0.001
Haemodialysis	-	-	-	-
Peritoneal Dialysis	0.35 (0.29 - 0.43)	<0.001	0.55 (0.51 - 0.60)	<0.001
Not on Dialysis	1.40 (0.08 - 23.88)	0.815	0.45 (0.19 - 1.09)	0.078
Transplant Year		<0.001		<0.001
2000 - 2004	-	-	-	-
2005 - 2009	0.59 (0.40 - 0.86)	0.006	0.70 (0.62 - 0.78)	<0.001
2010 - 2013	0.46 (0.32 - 0.68)	<0.001	0.46 (0.41 - 0.52)	<0.001
2014 - 2016	0.31 (0.21 - 0.45)	<0.001	0.34 (0.30 - 0.38)	<0.001
Mismatch Level		0.071		0.014
1	-	-	-	-
2	1.38 (1.05 - 1.80)	0.019	1.17 (1.03 - 1.31)	0.013
3	1.15 (0.87 - 1.51)	0.322	1.16 (1.03 - 1.32)	0.017
4	1.24 (0.84 - 1.82)	0.286	1.31 (1.11 - 1.56)	0.002
CIT (Hours)		<i>NS</i>		<0.001
<13	-	-	-	-
13-15	-	-	1.10 (0.99 - 1.21)	0.068
16-19	-	-	1.23 (1.11 - 1.35)	<0.001
20+	-	-	1.27 (1.15 - 1.41)	<0.001
CRF at Transplant		<0.001		<0.001
0%	-	-	-	-
1-85%	1.03 (0.85 - 1.24)	0.769	1.18 (1.09 - 1.28)	<0.001
>85%	1.96 (1.49 - 2.58)	<0.001	1.61 (1.41 - 1.84)	<0.001

Results are from multivariable binary logistic regression models, with DGF as the dependent variable. Patients with PNF were excluded from the analysis.

The remainder of the model is reported in Supplementary Table 4a. Variable selection was by a backwards stepwise approach, with the factors described in Supplementary Table 1 considered for inclusion, alongside the QOP. The complete cases analysis was based on N=3,698 cases (1,132 outcomes), whilst the replace-with-mean analysis included N=18,599 (5,284 outcomes). Bold p-values are significant at p<0.05. NS=Not selected for inclusion in the final model.

Supplementary Table 4c – Multivariable analyses of factors predictive of PNF

	Complete Cases		Replace-with-Mean	
	Odds Ratio (95% CI)	p-Value	Odds Ratio (95% CI)	p-Value
QOP (Implanting Team)	-	<0.001	-	<0.001
Grade 1	-	-	-	-
Grade 2	2.30 (1.75 - 3.03)	<0.001	2.02 (1.60 - 2.54)	<0.001
Grade 3	3.88 (2.49 - 6.06)	<0.001	3.65 (2.55 - 5.23)	<0.001
Grade 4	2.08 (1.23 - 3.51)	0.006	2.42 (1.64 - 3.57)	<0.001
Donor Age (Years)	-	NS	-	<0.001
<40	-	-	-	-
40-49	-	-	1.50 (1.11 - 2.04)	0.008
50-59	-	-	1.73 (1.30 - 2.31)	<0.001
60+	-	-	2.18 (1.64 - 2.91)	<0.001
Donor Terminal Creatinine (mmol/L)	-	NS	-	0.005
<60	-	-	-	-
60-74	-	-	1.35 (1.03 - 1.77)	0.031
75-99	-	-	1.52 (1.19 - 1.94)	<0.001
100+	-	-	1.53 (1.17 - 2.02)	0.002
Donor Last SBP (mmHg)	-	NS	-	0.087
<110	-	-	-	-
110-119	-	-	0.99 (0.70 - 1.40)	0.948
120-134	-	-	1.26 (0.96 - 1.65)	0.098
135+	-	-	1.36 (0.99 - 1.86)	0.056
Donor Cause of Death	-	0.015	-	0.004
Intracranial Haemorrhage	-	-	-	-
Hypoxic Brain Damage	0.78 (0.57 - 1.06)	0.117	0.76 (0.58 - 0.98)	0.034
Trauma	0.56 (0.34 - 0.91)	0.018	0.59 (0.40 - 0.86)	0.006
Other	0.61 (0.39 - 0.96)	0.033	0.66 (0.46 - 0.95)	0.024
Donor Type (DCD)	-	NS	1.30 (1.06 - 1.59)	0.011
Donor Smoking History	-	NS	1.16 (0.98 - 1.38)	0.093
Donor CMV (Positive)	0.78 (0.63 - 0.96)	0.018	0.81 (0.68 - 0.96)	0.014
Donor Risk Index	-	<0.001	-	-
<0.95	-	-	-	-
0.95-1.04	1.17 (0.81 - 1.68)	0.397	-	-
1.05-1.49	1.56 (1.11 - 2.20)	0.011	-	-
1.50+	1.97 (1.38 - 2.82)	<0.001	-	-
Recipient Sex (Female)	-	NS	0.86 (0.72 - 1.03)	0.101
Recipient Ethnicity	-	0.049	-	<0.001
White	-	-	-	-
Asian	1.39 (1.05 - 1.83)	0.021	1.51 (1.20 - 1.91)	<0.001
Black	1.41 (0.99 - 2.01)	0.055	1.64 (1.23 - 2.19)	<0.001
Mixed/Other	0.93 (0.38 - 2.30)	0.876	0.79 (0.35 - 1.82)	0.584
Recipient BMI (kg/m ²)	-	NS	-	0.001
<18.5	-	-	1.36 (0.65 - 2.84)	0.419
18.5-24.9	-	-	-	-
25.0-29.9	-	-	1.31 (1.04 - 1.65)	0.024
30.0+	-	-	1.79 (1.34 - 2.40)	<0.001
Recipient Diabetes	-	NS	0.73 (0.51 - 1.03)	0.071
Recipient CMV (Positive)	-	NS	1.18 (0.98 - 1.41)	0.085
Recipient Waiting Time (Months)	-	<0.001	-	<0.001
<12	-	-	-	-
12-23	1.43 (0.98 - 2.07)	0.061	1.39 (1.04 - 1.86)	0.024
24-47	1.70 (1.22 - 2.38)	0.002	1.65 (1.27 - 2.14)	<0.001
48+	2.14 (1.52 - 3.00)	<0.001	2.10 (1.61 - 2.75)	<0.001
Transplant Year	-	<0.001	-	0.026
2000 - 2004	-	-	-	-
2005 - 2009	0.63 (0.46 - 0.86)	0.003	0.82 (0.63 - 1.06)	0.131
2010 - 2013	0.48 (0.35 - 0.66)	<0.001	0.64 (0.48 - 0.86)	0.003
2014 - 2016	0.61 (0.44 - 0.84)	0.002	0.74 (0.55 - 0.99)	0.046
CIT (Hours)	-	NS	-	0.021
<13	-	-	-	-
13-15	-	-	1.24 (0.96 - 1.59)	0.099
16-19	-	-	1.19 (0.92 - 1.52)	0.182
20+	-	-	1.50 (1.16 - 1.94)	0.002
Damage to Organ	1.67 (1.29 - 2.16)	<0.001	1.52 (1.22 - 1.89)	<0.001

Results are from multivariable binary logistic regression models, with PNF as the dependent variable. Variable selection was by a backwards stepwise approach, with the factors described in Supplementary Table 1 considered for inclusion, alongside the QOP. The complete cases analysis was based on N=12,566 cases (371 outcomes), whilst the replace-with-mean analysis included N=19,158 (559 outcomes). Bold p-values are significant at p<0.05. NS=Not selected for inclusion in the final model.

Supplementary Table 4d – Multivariable analyses of factors predictive of long-term graft survival (part 1)

	Complete Cases		Replace-With-Mean	
	Hazard Ratio	p-Value	Hazard Ratio	p-Value
	(95% CI)		(95% CI)	
QOP (Implanting Team)		<0.001		0.002
Grade 1	-	-	-	-
Grade 2	1.19 (0.97 - 1.45)	0.100	1.18 (1.06 - 1.31)	0.003
Grade 3	2.07 (1.43 - 2.99)	<0.001	1.36 (1.09 - 1.69)	0.007
Grade 4	1.47 (1.02 - 2.12)	0.037	1.04 (0.83 - 1.29)	0.749
Number of Renal Arteries		NS		0.049
1	-	-	-	-
2	-	-	1.06 (0.98 - 1.16)	0.166
3+	-	-	1.29 (1.02 - 1.63)	0.034
Perfusate		0.002		<0.001
Wisconsin	-	-	-	-
Marshalls	1.28 (1.12 - 1.47)	<0.001	1.13 (1.04 - 1.22)	0.004
Other	1.12 (0.53 - 2.37)	0.768	1.52 (1.17 - 1.97)	0.001
Fast Track	1.47 (1.05 - 2.07)	0.027	-	NS
Donor Age (Years)		<0.001		<0.001
<40	-	-	-	-
40-49	1.32 (1.06 - 1.65)	0.015	1.37 (1.24 - 1.52)	<0.001
50-59	1.82 (1.48 - 2.24)	<0.001	1.60 (1.45 - 1.77)	<0.001
60+	2.67 (2.17 - 3.30)	<0.001	2.37 (2.13 - 2.64)	<0.001
Donor BMI (kg/m ²)		0.058		NS
<18.5	1.41 (0.90 - 2.22)	0.137	-	-
18.5-24.9	-	-	-	-
25.0-29.9	0.89 (0.77 - 1.04)	0.143	-	-
30.0+	0.84 (0.70 - 1.01)	0.060	-	-
Recipient Ethnicity		0.017		0.003
White	-	-	-	-
Asian	1.80 (1.20 - 2.70)	0.005	1.43 (1.13 - 1.80)	0.003
Black	1.64 (0.87 - 3.09)	0.124	1.42 (1.05 - 1.92)	0.024
Mixed/Other	1.16 (0.58 - 2.35)	0.669	1.16 (0.81 - 1.64)	0.415
Donor Terminal Creatinine (mmol/L)		NS		0.092
<60	-	-	-	-
60-74	-	-	1.07 (0.96 - 1.19)	0.211
75-99	-	-	1.02 (0.92 - 1.12)	0.736
100+	-	-	1.12 (1.01 - 1.24)	0.034
Donor Last Temperature (°C)		NS		0.031
<36.0	-	-	-	-
36.0-36.4	-	-	0.93 (0.81 - 1.08)	0.345
36.5-36.9	-	-	1.04 (0.91 - 1.18)	0.561
37.0+	-	-	0.93 (0.82 - 1.07)	0.322
Donor History of Diabetes	1.31 (1.02 - 1.68)	0.032	1.18 (1.02 - 1.37)	0.030
Donor History of Hypertension	-	NS	1.19 (1.10 - 1.29)	<0.001
Donor Smoking History	-	NS	1.07 (1.00 - 1.15)	0.048
Donor CMV (Positive)	-	NS	1.06 (0.99 - 1.14)	0.080

Results are from multivariable Cox regression models. Patients with graft failure or lost to follow up within 30 days of transplant were excluded, to ensure that the proportional hazards assumption was met. The remainder of the model is reported in Supplementary Table 4e. Variable selection was by a backwards stepwise approach, with the factors described in Supplementary Table 1 considered for inclusion, alongside the QOP. The complete cases analysis was based on N=8,089 cases (901 outcomes), whilst the replace-with-mean analysis included N=21,955 (3,526 outcomes). Bold p-values are significant at p<0.05. NS=Not selected for inclusion in the final model. NC=Not calculable, due to there being no events in this group.

Supplementary Table 4e – Multivariable analyses of factors predictive of long-term graft survival (part 2)

	Complete Cases		Replace-With-Mean	
	<i>Hazard Ratio (95% CI)</i>	<i>p-Value</i>	<i>Hazard Ratio (95% CI)</i>	<i>p-Value</i>
Recipient Age (Years)		<0.001		<0.001
<40	-	-	-	-
40-49	0.55 (0.46 - 0.66)	<0.001	0.65 (0.60 - 0.72)	<0.001
50-59	0.47 (0.39 - 0.57)	<0.001	0.59 (0.53 - 0.65)	<0.001
60+	0.52 (0.43 - 0.64)	<0.001	0.66 (0.60 - 0.73)	<0.001
Recipient Ethnicity		0.020		<0.001
White	-	-	-	-
Asian	0.89 (0.71 - 1.11)	0.311	0.94 (0.84 - 1.04)	0.231
Black	1.26 (0.96 - 1.64)	0.094	1.41 (1.23 - 1.60)	<0.001
Mixed/Other	0.19 (0.05 - 0.78)	0.021	0.92 (0.67 - 1.25)	0.579
Recipient BMI (kg/m ²)		<0.001		0.014
<18.5	0.90 (0.57 - 1.41)	0.639	1.15 (0.84 - 1.57)	0.381
18.5-24.9	-	-	-	-
25.0-29.9	0.86 (0.73 - 1.01)	0.065	1.02 (0.92 - 1.12)	0.744
30.0+	1.32 (1.12 - 1.56)	0.001	1.22 (1.07 - 1.40)	0.004
Recipient Diabetes	1.26 (1.00 - 1.59)	0.052	1.35 (1.20 - 1.52)	<0.001
Recipient HCV (Positive)			1.42 (0.97 - 2.06)	0.068
Recipient CMV (Positive)	1.17 (1.01 - 1.34)	0.032	1.09 (1.01 - 1.16)	0.022
Recipient Dialysis at Transplant		0.001		<0.001
Haemodialysis	-	-	-	-
Peritoneal Dialysis	0.74 (0.63 - 0.87)	<0.001	0.80 (0.74 - 0.87)	<0.001
Not on Dialysis	NC	NC	0.79 (0.29 - 2.10)	0.630
Transplant Year		<i>NS</i>		<0.001
2000 - 2004	-	-	-	-
2005 - 2009	-	-	0.84 (0.77 - 0.92)	<0.001
2010 - 2013	-	-	0.75 (0.67 - 0.85)	<0.001
2014 - 2016	-	-	0.69 (0.59 - 0.82)	<0.001
Mismatch Level		<i>NS</i>		<0.001
1	-	-	-	-
2	-	-	1.20 (1.08 - 1.34)	<0.001
3	-	-	1.31 (1.17 - 1.46)	<0.001
4	-	-	1.66 (1.43 - 1.93)	<0.001
CIT (Hours)		<i>NS</i>		0.031
<13	-	-	-	-
13-15	-	-	1.02 (0.91 - 1.14)	0.701
16-19	-	-	1.09 (0.98 - 1.22)	0.095
20+	-	-	1.15 (1.03 - 1.28)	0.012
CRF at Transplant		<0.001		<0.001
0%	-	-	-	-
1-85%	0.97 (0.83 - 1.14)	0.704	1.09 (1.01 - 1.18)	0.030
>85%	1.54 (1.26 - 1.88)	<0.001	1.61 (1.42 - 1.82)	<0.001
Damage to Organ	-	<i>NS</i>	1.14 (1.03 - 1.25)	0.008

Results are from multivariable Cox regression models. Patients with graft failure or lost to follow up within 30 days of transplant were excluded, to ensure that the proportional hazards assumption was met. The remainder of the model is reported in Supplementary Table 4d. Variable selection was by a backwards stepwise approach, with the factors described in Supplementary Table 1 considered for inclusion, alongside the QOP. The complete cases analysis was based on N=8,089 cases (901 outcomes), whilst the replace-with-mean analysis included N=21,955 (3,526 outcomes). Bold p-values are significant at p<0.05. NS=Not selected for inclusion in the final model. NC=Not calculable, due to there being no events in this group.