

Transitional events in the spectrophotometric regime between stripped envelope and superluminous supernovae

Prentice, S. J.; Inserra, C.; Schulze, S.; Nicholl, M.; Mazzali, P. A.; Vergani, S. D.; Galbany, L.; Anderson, J. P.; Ashall, C.; Chen, T. W.; Deckers, M.; Delgado Mancheño, M.; González Díaz, R.; González-Gaitán, S.; Gromadzki, M.; Gutiérrez, C. P.; Harvey, L.; Kozyreva, A.; Magee, M. R.; Maguire, K.

DOI:

[10.1093/mnras/stab2864](https://doi.org/10.1093/mnras/stab2864)

License:

None: All rights reserved

Document Version

Peer reviewed version

Citation for published version (Harvard):

Prentice, SJ, Inserra, C, Schulze, S, Nicholl, M, Mazzali, PA, Vergani, SD, Galbany, L, Anderson, JP, Ashall, C, Chen, TW, Deckers, M, Delgado Mancheño, M, González Díaz, R, González-Gaitán, S, Gromadzki, M, Gutiérrez, CP, Harvey, L, Kozyreva, A, Magee, MR, Maguire, K, Müller-Bravo, TE, Muñoz Torres, S, Pessi, PJ, Sollerman, J, Teffs, J, Terwel, JH & Young, DR 2021, 'Transitional events in the spectrophotometric regime between stripped envelope and superluminous supernovae', *Monthly Notices of the Royal Astronomical Society*, vol. 508, no. 3, pp. 4342–4358. <https://doi.org/10.1093/mnras/stab2864>

[Link to publication on Research at Birmingham portal](#)

General rights

Unless a licence is specified above, all rights (including copyright and moral rights) in this document are retained by the authors and/or the copyright holders. The express permission of the copyright holder must be obtained for any use of this material other than for purposes permitted by law.

- Users may freely distribute the URL that is used to identify this publication.
- Users may download and/or print one copy of the publication from the University of Birmingham research portal for the purpose of private study or non-commercial research.
- User may use extracts from the document in line with the concept of 'fair dealing' under the Copyright, Designs and Patents Act 1988 (?)
- Users may not further distribute the material nor use it for the purposes of commercial gain.

Where a licence is displayed above, please note the terms and conditions of the licence govern your use of this document.

When citing, please reference the published version.

Take down policy

While the University of Birmingham exercises care and attention in making items available there are rare occasions when an item has been uploaded in error or has been deemed to be commercially or otherwise sensitive.

If you believe that this is the case for this document, please contact UBIRA@lists.bham.ac.uk providing details and we will remove access to the work immediately and investigate.

Transitional events in the spectrophotometric regime between stripped envelope and superluminous supernovae

S. J. Prentice,^{1*} C. Inserra², S. Schulze³, M. Nicholl⁴, P. A. Mazzali^{5,6},
S. D. Vergani⁷, L. Galbany^{8,9}, J. P. Anderson¹⁰, C. Ashall¹¹, T. W. Chen³,
M. Deckers¹, M. Delgado Mancheño⁸, R. González Díaz^{9,12}, S. González-Gaitán¹³,
M. Gromadzki¹⁴, C. P. Gutiérrez^{15,16}, L. Harvey¹, A. Kozyreva⁶, M. R. Magee¹,
K. Maguire¹, T. E. Müller-Bravo¹⁷, S. Muñoz Torres⁸, P. J. Pessi^{10,18}, J. Sollerman³,
J. Teffs⁵, J. H. Terwel¹, and D. R. Young¹⁹,

¹*School of Physics, Trinity College Dublin, The University of Dublin, Dublin 2, Ireland*

²*School of Physics & Astronomy, Cardiff University, Queens Buildings, The Parade, Cardiff, CF24 3AA, UK*

³*The Oskar Klein Centre, Department of Astronomy, Stockholm University, AlbaNova, SE-106 91 Stockholm, Sweden*

⁴*Birmingham Institute for Gravitational Wave Astronomy and School of Physics and Astronomy, University of Birmingham, Birmingham B15 2TT, UK*

⁵*Astrophysics Research Institute, Liverpool John Moores University, IC2, Liverpool Science Park, 146 Brownlow Hill, Liverpool L3 5RF, UK*

⁶*Max-Planck-Institut für Astrophysik, Karl-Schwarzschild-Str. 1, D-85748 Garching, Germany*

⁷*GEPI, Observatoire de Paris, PSL University, CNRS, 5 Place Jules Janssen, 92190 Meudon, France*

⁸*Departamento de Física Teórica y del Cosmos, Universidad de Granada, E-18071 Granada, Spain*

⁹*Institute of Space Sciences (ICE, CSIC), Campus UAB, Carrer de Can Magrans, s/n, E-08193 Barcelona, Spain*

¹⁰*European Southern Observatory, Alonso de Córdova 3107, Casilla 19, Santiago, Chile*

¹¹*Institute for Astronomy, University of Hawai'i at Manoa, 2680 Woodlawn Dr., Hawai'i, HI 96822, USA*

¹²*Instituto Nacional de Astrofísica, Óptica y Electrónica (INAOE), 72840 Tonantzintla, Puebla, Mexico*

¹³*CENTRA-Centro de Astrofísica e Gravitação and Departamento de Física, Instituto Superior Técnico, Universidade de Lisboa, Avenida Rovisco Pais, 1049-001 Lisboa, Portugal*

¹⁴*Astronomical Observatory, University of Warsaw, Al. Ujazdowskie 4, 00-478 Warszawa, Poland*

¹⁵*Finnish Centre for Astronomy with ESO (FINCA), FI-20014 University of Turku, Finland*

¹⁶*Tuorla Observatory, Department of Physics and Astronomy, FI-20014 University of Turku, Finland*

¹⁷*School of Physics and Astronomy, University of Southampton, Southampton, Hampshire, SO17 1BJ, UK*

¹⁸*Facultad de Ciencias Astronómicas y Geofísicas (FCAG), Universidad Nacional de La Plata (UNLP), Paseo del bosque S/N, 1900, Argentina*

¹⁹*Astrophysics Research Centre, School of Mathematics and Physics, Queen's University Belfast, Belfast BT7 1NN, UK*

Accepted XXX. Received YYY; in original form ZZZ

ABSTRACT

The division between stripped-envelope supernovae (SE-SNe) and superluminous supernovae (SLSNe) is not well defined in either photometric or spectroscopic space. While a sharp luminosity threshold has been suggested, there remains an increasing number of transitional objects that reach this threshold without the spectroscopic signatures common to SLSNe. In this work we present data and analysis on four SNe transitional between SE-SNe and SLSNe; the He-poor SNe 2019dwa and 2019cri, and the He-rich SNe 2019hge and 2019unb. Each object displays long-lived and variable photometric evolution with luminosities around the SLSN threshold of $M_r < -19.8$ mag. Spectroscopically however, these objects are similar to SE-SNe, with line velocities lower than either SE-SNe and SLSNe, and thus represent an interesting case of rare transitional events.

Key words: supernovae: general

1 INTRODUCTION

The classification scheme of stripped-envelope supernovae (SE-SNe) is a spectroscopic one that mostly evolved over the latter half of the Twentieth Century (e.g., Filippenko 1997). Type I and Type II

* E-mail: sipren.astro@gmail.com

separate H-poor and H-rich transients. Type Ia separates thermonuclear events from the Type Ibc SE-SNe. The latter group separated into the He-rich Type Ib and the He-poor Type Ic. Some SE-SNe, of Type Ic in particular, display broad and blended absorption features in their spectra indicative of a high specific kinetic energy. These are then further separated into Type Ic-BL. To complicate matters, SE-SNe also include stars that explode with residual H in their outer layers, these are Type Iib. Prentice & Mazzali (2017) went further, separating the Type Ic into subclasses which expanded on the absorption width theme by counting the number of certain features in the spectra. This led to a sequence Ic-7 to Ic-3 with increasing specific kinetic energy, thus linking the taxonomic scheme with physical parameters.

Since the discovery of hydrogen-poor superluminous supernovae (SLSNe) in the last decade or so (Quimby et al. 2011), an active topic of research has been establishing how these objects are connected to normal SE-SNe, including SNe Ib, Ic, Iib, broad line SNe, and supernova associated with gamma-ray bursts (For studies of SE-SNe see Lyman et al. 2016; Prentice et al. 2016, 2019b). ‘Superluminous supernova’ however, is a classification mainly based upon a photometric property (luminosity). Initially, SLSNe were separated in luminosity space from SE-SNe by an empirical cut: SLSNe are found at $M_r = -20$ to -22 mag, making them amongst the most luminous transients in the universe (Gal-Yam 2012). Stripped-envelope supernovae are found at lower luminosities compared to SLSNe, $M_r = -16$ to -19 mag (e.g., Drout et al. 2011; Taddia et al. 2018). With larger and more homogeneous samples, this initially useful magnitude boundary has become blurry: Angus et al. (2019) compared the luminosity distributions of SLSNe from the Dark Energy Survey (DES) with the literature sample of SLSNe, and found that the DES SLSN luminosity distribution peaks at $M_{4000} \sim -19.5$ mag, while the literature sample peaks at $M_{4000} \sim -20.75$ mag (M_{4000} is an artificial band-pass centred on 4000 Å, see Inserra & Smartt 2014). De Cia et al. (2018) showed that if one assumes that SE-SNe and SLSNe are transients of similar origin then the luminosity distribution of these objects is smooth and decreases for increasing luminosity.

To have a phenomenological definition of SLSNe similar to those of other SN types, the spectra evolution up to 30 days post-maximum needs to be probed. A SLSN I spectrum at 30 days resembles that of a type Ic at peak (e.g. Pastorello et al. 2010; Inserra et al. 2013), exhibiting a photospheric velocity that does not evolve after 30+ days in contrast with typical SE-SNe (e.g. Nicholl et al. 2015; Liu et al. 2017a; Inserra et al. 2018b).

Another issue is that SLSNe are rare (Quimby et al. 2013; Frohmaier et al. 2021), and being luminous they are observed at higher redshift than other SN types making them relatively dim in the observer frame. Consequently, spectroscopic observations with good S/N are hard to come by, and long-term monitoring less likely. Thus the spectroscopic properties of the existing SLSN sample are not well sampled, with the exception of a few objects (e.g. SNe 2015bn and 2017egm, Nicholl et al. 2016a; Bose et al. 2018).

Inserra et al. (2018b) provided a statistical analysis of SLSNe-I identifying two subclasses based on their photometric and spectroscopic evolution together with the ejecta velocity. Quimby et al. (2018) analysed a large sample of Palomar Transient Factory (PTF) SLSN-I and reported a similar finding with most objects following a similar spectroscopic evolution to PTF12dam or SN 2011ke. They also note that a few objects were ‘SLSN-like’ but did not fit within this system or had limited data. One of these objects is PTF10ghi (henceforth SN 2010md) which showed H/He in its spectra, making it more SN Iib-like (Inserra et al. 2013; Quimby et al. 2018).

Indeed, despite the obvious lack of He in the spectra of most objects Mazzali et al. (2016) demonstrated through spectral models that He may be present in the post-peak spectra in some SLSN-I. They identify iPTF13ajg as a likely candidate and suggested reclassifying this as a SN Ib. Although the photospheric-phase properties of SLSNe are clearly quite heterogeneous, a clustering analysis of their nebular phase spectra by Nicholl et al. (2019) could not identify multiple populations, suggesting their interiors may be similar despite differences in their envelopes and environments.

Another possible distinction between SLSNe (and some energetic SN Ic) and SE-SNe is the observation that they are hosted in different type of galaxies. SLSNe occur in galaxies of lower metallicity and higher specific star-formation rate than is typical for SE-SNe (e.g., Wiseman et al. 2020; Schulze et al. 2020a). One possibility is that the SLSN rate is suppressed in galaxies above a metallicity threshold of around one-half solar (Perley et al. 2016; Chen et al. 2017; Schulze et al. 2020a). The high specific star-formation rate has been used to point to SLSNe having progenitors with larger M_{ZAMS} (Leloudas et al. 2015).

It is then clear that the division between SLSNe and normal SE-SNe is not as simple as originally proposed. In recent years, wide-field surveys have revealed a few unusual transients including transitional objects, in terms of luminosity or spectra evolution (or both) between SLSNe and normal CC-SNe (Modjaz et al. 2019) such as SN 2017ens (Chen et al. 2018), a transition between a SLSN and a SN IIn or SN 2019hcc (Parrag et al. submitted), a SN II with a classification spectrum typical of a SLSN. In this work, we present data and analysis on four photometrically unusual transients that sit in the ‘spectro-luminosity’ region between SLSNe and SE-SNe, but which are spectroscopically similar to normal SE-SNe rather than to most SLSNe. Two of these objects, SNe 2019hge and 2019unb, are spectroscopically similar to both normal He-rich SE-SNe and to SN 2010md, but with lower luminosity. They have previously been the subject of a study as part of a Zwicky Transient Facility (ZTF; Bellm et al. 2019) sample of SLSNe (Yan et al. 2020).

- SN 2019cri/ZTF19aanijpu/ATLAS19gnt/Gaia19cpo/PS20axc was discovered by ZTF on 2019-03-25 07:03:21. It was classified as a Type Ic-7 on 2019-04-23 08:47:39 (Prentice et al. 2019e).

- SN 2019dwa/ZTF19aarfyvc/Gaia19bxj was discovered by ZTF on 2019-04-10 07:42:31. It was classified as a Type Ic supernova on 2019-05-16 20:05:46 (Fremming et al. 2019).

- SN 2019hge/ZTF19aawfbtg/ATLAS19och/Gaia19est/PS19elv was another ZTF discovery from 2019-05-31 11:11:30. It was classified as a peculiar SN Iib on 2019-08-23 11:25:41 (Prentice et al. 2019a), and later as a SLSN-I (Dahiwale et al. 2019).

- Finally, SN 2019unb/ZTF19acgjpgh/ATLAS19bari/Gaia19fbu/PS19isr was discovered in the ZTF public stream and reported to the Transient Name Server¹ (TNS) by the Trinity College Dublin transient group on 2019-10-20 12:28:30 (Prentice et al. 2019c). It was classified as a peculiar Type II (Prentice et al. 2019d) and later a SLSN-I (Dahiwale & Fremming 2020).

2 DATA COLLECTION AND REDUCTION

The SNe, shown in context in Fig. 1, were observed with the Liverpool Telescope (LT; Steele et al. 2004). Optical imaging was obtained with the IO:O camera and spectra with the SPectrograph for the Rapid Acquisition of Transients (SPRAT; Piascik et al. 2014).

¹ <https://www.wis-tns.org/>

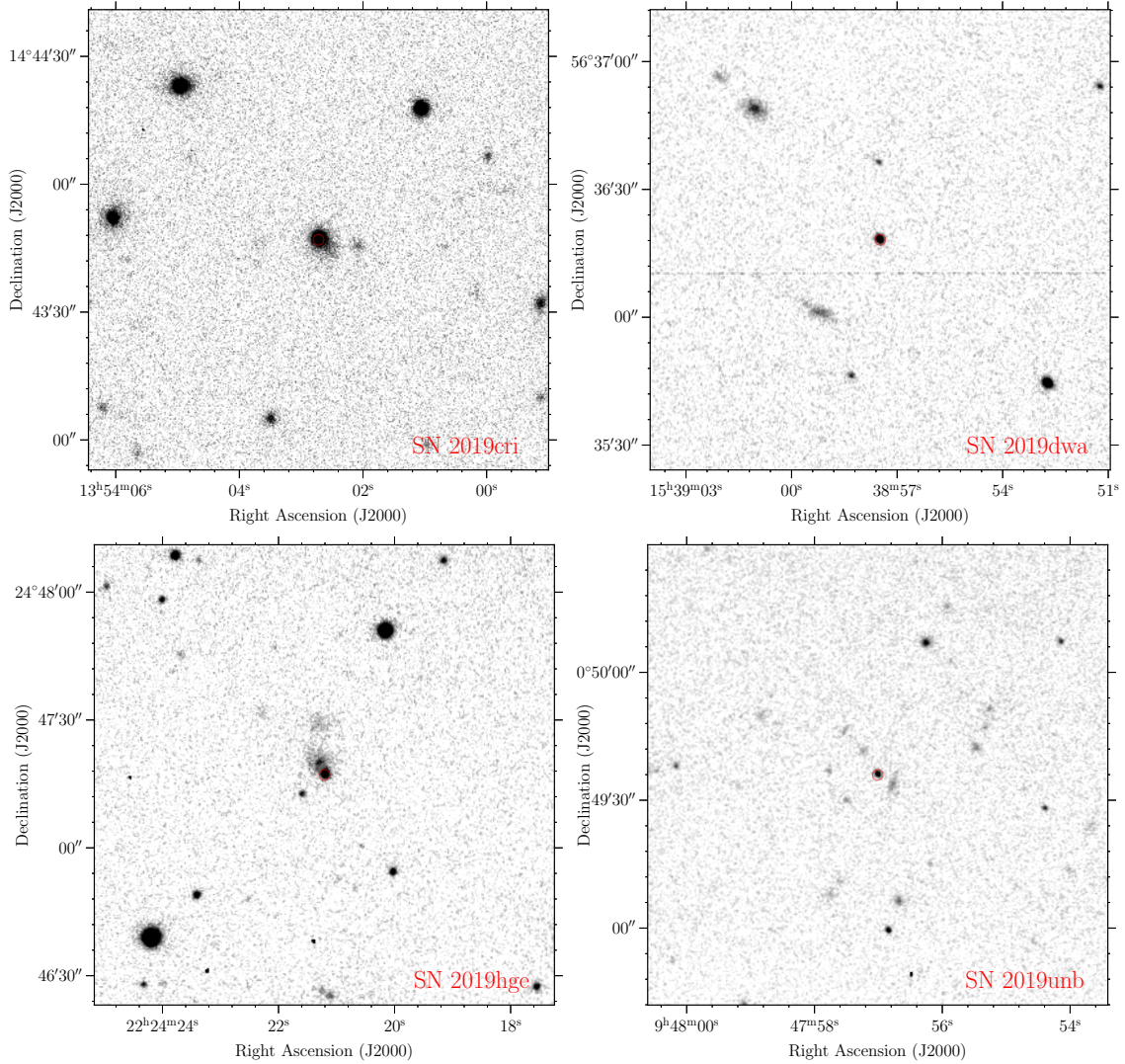


Figure 1. Liverpool Telescope *r*-band images of the SN 2019cri (upper left), SN 2019dwa (upper right), SN 2019hge (lower left), and SN 2019unb (lower right) as observed in their respective fields. Owing to the distances involved, the host galaxies are small and dim, and at the location of each transient.

Optical photometry was reduced with a custom PYTHON script utilising PYRAF, which was then calibrated to Sloan Digital Sky Survey (SDSS; Ahn et al. 2014) stars in the respective field. The SPRAT spectra were reduced and calibrated using the LT:SPRAT pipeline (Barnsley et al. 2012) and a custom PYTHON script.

Three of the objects were observed as part of the advanced Public ESO Spectroscopic Survey of Transients (ePESSTO+, for an overview of PESSTO see Smartt et al. 2015). These are SNe 2019cri, 2019hge, and 2019unb. For the aforementioned objects, spectra were obtained using ESO Faint Object Spectrograph and Camera (v.2) (EFOSC2; Buzzoni et al. 1984) on board the ESO New Technology Telescope. These spectra were reduced through standard pipelines².

We were able to obtain additional spectra using the Intermediate-dispersion Spectrograph and Imaging System (ISIS) mounted on the 4.2 m William Herschel Telescope (WHT). This was reduced using a custom IRAF pipeline.

Finally, all proprietary data will be made public via the Weizmann Interactive Supernova Data Repository (WiSeREP)³

2.0.1 Distance and extinction

The distance modulus μ for each SN was calculated using its redshift, and cosmological parameters from the Nine-year Wilkinson Microwave Anisotropy Probe; $H_0 = 69.32 \text{ km s}^{-1} \text{ Mpc}^{-1}$, $\Omega_m = 0.286$, $\Omega_\Lambda = 0.714$ (Hinshaw et al. 2013). Reddening within the Milky Way, $E(B - V)_{\text{MW}}$, were provided by the dust maps of Schlafly & Finkbeiner (2011). The spectra of each object were checked for evidence of absorption by local dust via Na I D absorption lines but no indication was found, thus we take intrinsic reddening $E(B - V)_{\text{host}}$ for all objects to be negligible. Relevant values are given in Table 1. All data were corrected for $E(B - V)_{\text{MW}}$ using $R_V = 3.1$ and the extinction law of Cardelli et al. (1989).

² <https://github.com/svalenti/pessto>

³ www.wiserep.org

Table 1. Redshift, extinction and distance of each object. Host extinction is assumed to be negligible.

SN	Type	α (J2000)	δ (J2000)	z	μ [mag]	$E(B - V)_{MW}$ [mag]	Comments
2019cri	Ic-7 (peculiar)	13:54:02.720	+14:43:46.96	0.041	36.31	0.02	Redshift from host H α
2019dwa	Ic-7 (peculiar)	15:38:57.480	+56:36:18.18	0.076	37.71	0.01	Redshift from host H α
2019hge	Ib-pec/SLSN-Ib	22:24:21.210	+24:47:17.12	0.087	38.01	0.06	Redshift from Yan et al. (2020)
2019unb	Ib-pec/SLSN-Ib	09:47:57.010	+00:49:35.94	0.064	37.31	0.11	Redshift from Yan et al. (2020)

2.1 Host Galaxies

The spectral energy distributions (SEDs) of the host galaxies were modelled with the software package PROSPECTOR⁴ version 0.3 (Leja et al. 2017). We assumed a linear-exponential star-formation history, the Chabrier (2003) IMF, the Calzetti et al. (2000) attenuation model, and the Byler et al. (2017) model for the ionized gas contribution. The priors were set as described in Schulze et al. (2020b). The results are shown in Fig. 2.

In order to build the SEDs, we retrieved science-ready coadded images from the *Galaxy Evolution Explorer* (GALEX) general release 6/7 (Martin et al. 2005), the Sloan Digital Sky Survey DR 9 (SDSS; Ahn et al. 2012), the Panoramic Survey Telescope and Rapid Response System (Pan-STARRS, PS1) DR1 (Chambers et al. 2016), the Two Micron All Sky Survey (2MASS; Skrutskie et al. 2006), and preprocessed WISE images (Wright et al. 2010) from the unWISE archive (Lang 2014)⁵. The unWISE images are based on the public WISE data and include images from the ongoing NEOWISE-Reactivation mission R3 (Mainzer et al. 2014; Meisner et al. 2017). We also retrieved deeper optical images from the DESI Legacy Imaging Surveys (Legacy Surveys, LS; Dey et al. 2019) DR7 for SN 2019dwa and SN 2019unb. Co-added *grz* images of the hosts from The Dark Energy Camera Legacy Survey (DECaLS) obtained through the Legacy Survey can be seen in Fig. 3.

The field of SN 2019hge was observed with the UV/optical (UVOT; Roming et al. 2005) on board the Neil Gehrels *Swift* Observatory (Gehrels et al. 2004). We use the data, after the SN faded, to measure the brightness of the host in the UV filters. The brightness in the UVOT filters was measured with UVOT-specific tools in the HEASOFT⁶ version 6.26.1. Source counts were extracted from the images using a region of 6.8''. The background was estimated using a circular region with a radius of 39'' close to the SN position. The count rates were obtained from the images using the *Swift* tool UVOTSOURCE. They were converted to magnitudes using the UVOT calibration file from September 2020. All magnitudes were transformed into the AB system using Breeveld et al. (2011).

We used the software package LAMBDA (Lambda Adaptive Multi-Band Deblending Algorithm in R) (Wright et al. 2016), which is based on a software package written by Bourne et al. (2012) and tools presented in Schulze et al. (2020b), to measure the brightness of the host galaxy. The brightness in the Legacy Surveys images were measured with the aperture-photometry tool presented by Schulze et al. (2018)⁷.

Figure 4 shows how these host galaxies compare with the hosts of the PTF sample of supernovae in star formation rate/stellar mass space. It can be seen that the hosts of SNe 2019cri, 2019dwa, and

2019unb have typically higher star formation rates than is usual for the hosts of ‘normal’ CC-SNe, and are consistent with the hosts of SLSNe. In terms of stellar mass, the host of SN 2019hge has the largest and is comparable with the typical hosts of CC-SNe. Finally, by inspecting the host galaxy morphology in the Legacy Survey images, we can see that the hosts of SN 2019cri and SN 2019hge have undergone, or are still undergoing, interaction with another galaxy, Fig. 3.

3 PHOTOMETRY

3.1 Light curves

Figure 5 shows the multi-colour light curves for each object. Also plotted are the epochs of spectroscopic observations. For both SN 2019hge and SN 2019dwa, the unusual nature of the events were only publicly reported quite late in the evolution of each object, so our observations began post-maximum. The presence of the public ZTF light curves are testament to the importance of public data release from large surveys, as without this data neither of these objects would have been identified as being unusual or been subject to a follow-up campaign.

From Fig. 5 there are two obvious defining features for each event. The first is the long lived rise to *r*-band maximum light. This is at least 65 days for SN 2019cri, 35 days for SN 2019dwa, 60 days for SN 2019hge and 70 days for SN 2019unb. The second, are the variations in brightness prominently seen in SN 2019cri, SN 2019hge, and SN 2019unb. These variations are highly reminiscent of another recent event, SN2019stc, which was also identified as a transitional event between SLSNe and normal SE-SNe (Gomez et al. 2021).

3.1.1 Light curve morphology

The brightness variations are unlike the typical evolution of SE-SNe, although they are seen in SLSNe. If we consider SN 2019cri, the light curves rise to an initial peak after ~ 60 days, before they decay but then level off between 80 – 100 days. The light curves then undergo another period of decay, but this last little beyond 150 days because the final observations at ~ 240 days show little change from the observations almost 100 days prior.

SN 2019dwa shows the least variation in brightness, however, around 65 – 70 days some variation is seen in *r* that is present in both the LT and the ZTF photometry. A curious aspect of SN 2019dwa’s light curve, aside from the long rise, is that after peak the light curve decays for nearly 100 days without ever settling on a ⁵⁶Co tail. This will be discussed further in relation to other objects in Section 3.1.2.

Next, we consider the complex light curves of SN 2019hge. The transient rises to a peak over 60 – 70 days. Around 30 days the light curve appears to ‘stall’ in its rise before continuing up to maximum light. At around 70 days the light curve drops 0.7 mag

⁴ <https://github.com/bd-j/prospector>

⁵ <http://unwise.me>

⁶ <https://heasarc.gsfc.nasa.gov/docs/software/heasoft/>

⁷ <https://github.com/steveschulze/Photometry>

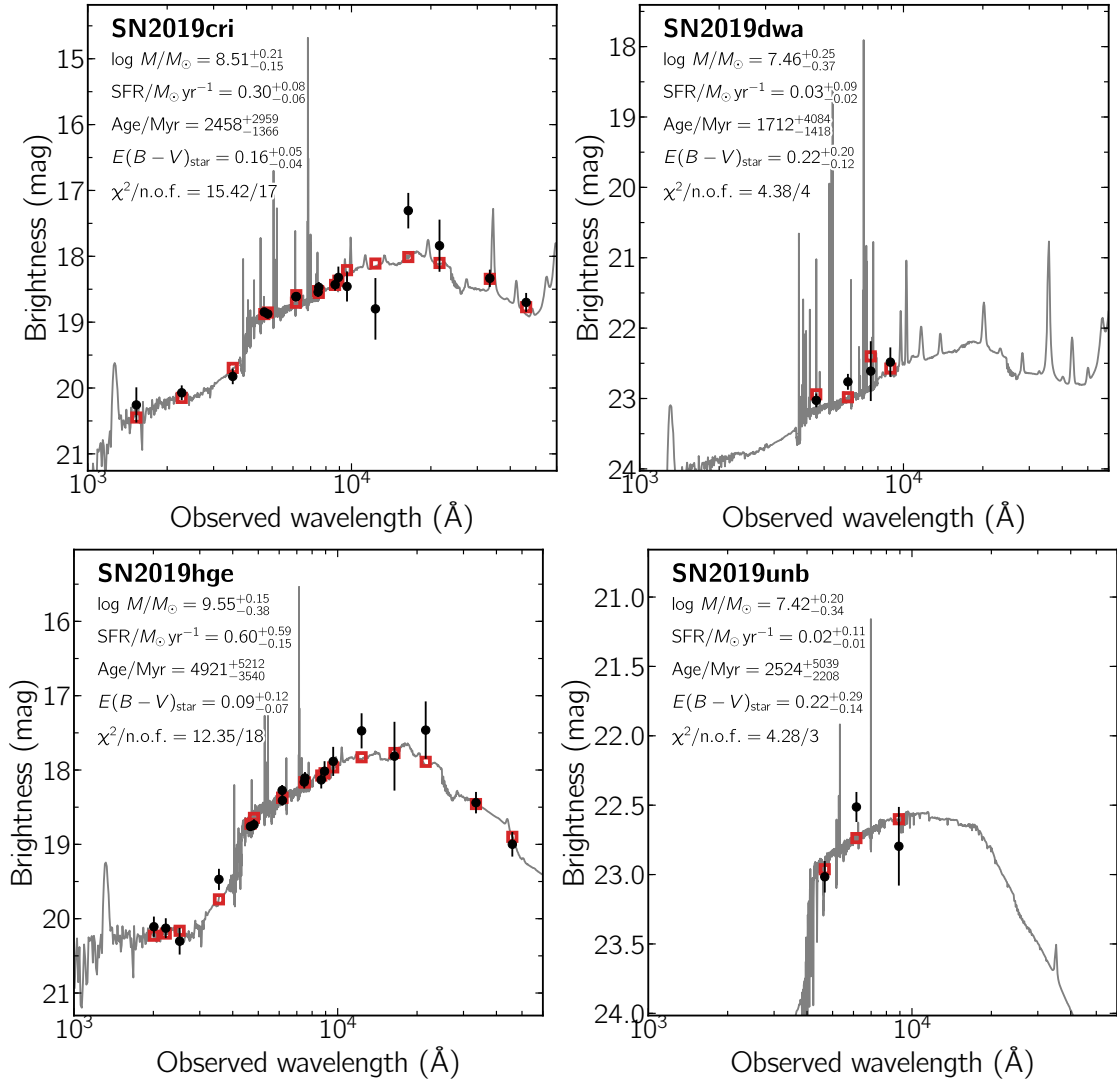


Figure 2. The spectral energy distribution of the host galaxies (detections \bullet ; model predicted magnitudes \square). The solid line displays the best-fitting model of the SED. The fitting parameters are shown in the upper-left corner. The abbreviation “n.o.f.” stands for numbers of filters.

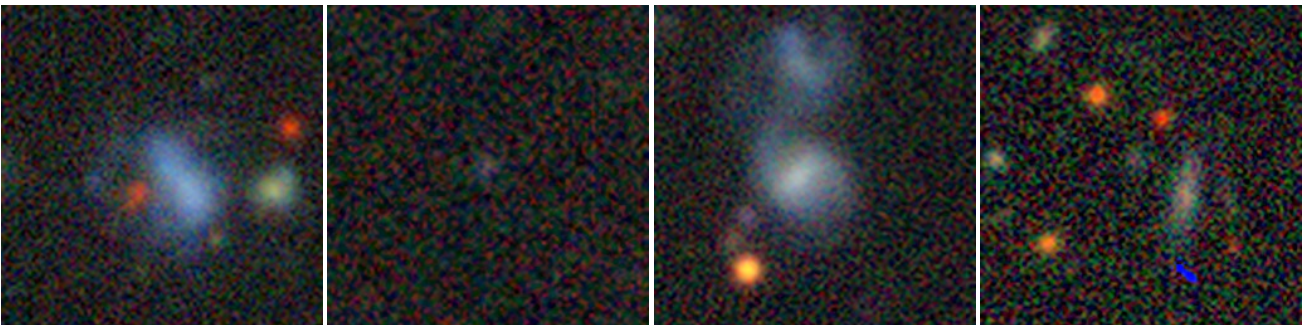


Figure 3. *grz* cut-outs from The Dark Energy Camera Legacy Survey (DECaLS). **Left:** The host of SN 2019cri. **Centre left:** The host of SN 2019dwa. **Centre right:** The host of SN 2019hge. **Right:** The host of SN 2019unb. The morphological shape of the hosts of SNe 2019cri and 2019hge provide evidence of recent interaction.

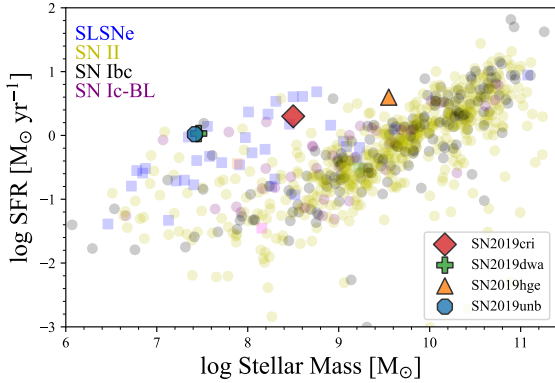


Figure 4. The position of the host of the four SNe in comparison with the PTF sample of Schulze et al. (2020a). While most of the host galaxies have high star formation and relatively low mass, the host of SN 2019hge stands out as being the most massive of the four, and comparable to regular CC-SNe.

and 1 mag over about a week for r and g respectively. The ZTF light curve then begins a slow rise again, at which point our photometric and spectroscopic observations start. The rise lasts 12 days before decaying further, at a slightly slower rate than previously. At about 125 days the decay ceases and another rise is seen in the ZTF g and r photometry. This decays again before settling on a relatively flat tail. At this point the object was no longer visible during the night, it was not later recovered.

Finally SN 2019unb evolves in a similar way to SN 2019hge. There is a rise to a plateau over 30 days, the plateau is seen in the optical bands but not in u , which decays from the first observation. After ~ 55 days the $griz$ light curves rise again until they reach maximum light at 70 days. The light curves then decay until around 95 days, with g decaying more rapidly than r as per SN 2019hge. There is then a period with much slower decay before the light curves return to a rapid decay between 120 – 150 days. At this point the light curve is sparsely sampled but shows a very flat evolution. The photometry is not contaminated by the host and was the transient was clearly detected in the images on these days.

3.1.2 Absolute r -band light curves

To estimate the absolute r -band light curves of the SNe, the relevant light curve was corrected for $E(B - V)_{MW}$ as per Table 1 then a K-correction was applied. These were derived from the spectra and assumed to be constant (the same as the calculated value nearest in time) outside of the epoch of spectroscopic observations. While this does miss the time-dependence of the K-correction at these phases the overall corrections are relatively small ($\sim |0.1|$ mag) and applied at phases away from maximum light. Most affected is SN 2019dwa, where the g -band K-corrections approach 0.3 mag and the spectroscopic time-series only covers a few weeks. Finally, the absolute magnitude was found by subtracting the distance modulus μ from the corrected apparent magnitude. The peak M_r and M_g are given in Table 2.

Figure 6 shows these light curves against a selection of SE-SNe and SLSNe. The four transients have peak M_r between -19 and -20.1 mag, which places them in between the space of the luminous SNe Ibc and the sub-luminous SLSNe. SN 2019dwa is the least luminous of the four in M_r and also has the narrowest light curve, as defined by the length of time the light curve is more

Table 2. Intrinsic peak magnitude and full width at half maximum light for M_g and M_r .

SN	M_g [mag]	Width [days]	M_r [mag]	Width [days]
2019cri	-19.02 ± 0.02	64	-19.45 ± 0.03	69
2019dwa	-19.0 ± 0.1	29	-19.0 ± 0.1	39
2019hge	-19.98 ± 0.06	57	-19.86 ± 0.07	83
2019unb	-20.2 ± 0.1	64	-20.21 ± 0.05	67

luminous than half its peak luminosity (full width half maximum; FWHM).

Brighter still is SN 2019cri, SN 2019hge, and then SN 2019unb. As is discussed in Section 4, SNe 2019cri and 2019dwa are spectroscopically similar to normal SNe Ic, while SNe 2019hge and 2019unb are similar to SNe Ib/Ib at later phases but at early phases have a SLSN-like blue spectrum. The well studied SLSN SN 2015bn (Nicholl et al. 2016a) peaks at nearly two orders of magnitude greater than our four objects, which are closer to the luminosity distribution of SE-SNe.

It was previously noted that SN 2019dwa has an unusual decline that does not reach a ^{56}Co tail by at least 70 days after maximum. Comparison with the SNe Ibc shows how unusual this is, as the decaying light curve of SN 2019dwa passes through the position of the late linear tails of many objects that are dimmer at peak magnitude.

Prior to the discovery of SN 2019cri, The Type Ic-7 SN 2011bm (Valenti et al. 2012) displayed the broadest known light curve for a spectroscopically normal SNe Ic. Figure 6 demonstrates that SN 2019cri is a considerably broader and more luminous an event. The spectroscopic similarity between these SNe Ic-7 shown in the figure is discussed in Section 4.1. SN 2019cri is also similar photometrically to the luminous H/He-poor SN 2018don (Lunnan et al. 2020) and transitional object SN 2012aa (Roy et al. 2016), all display a long rise followed by a decline, a period of levelling off and then a secondary decline. Spectroscopically however, neither SN 2018don or SN 2012aa display the strong narrow absorption of SN 2019cri.

3.2 Colour curves

The $g-r$ colour curves derived from the dereddened and K-corrected g and r photometry are shown in Fig. 7. For comparison are a sample of SNe Ibc from Prentice et al. (2019b) and a sample of SLSNe. Owing to the difference in temporal evolution between the SNe Ibc and the comparison object, the timescales of the SNe Ibc are multiplied by a factor of three.

SNe 2019cri and 2019dwa, which are both He-poor, follow the scaled evolution of the SNe Ibc. They both initially evolve slowly to the red, with SN 2019cri reaching a turnover at the same time as the scaled SE-SN colour curves. This is not apparent in the colour curve of SN 2019dwa and reflects that its light curves are never observed to settle on a late linear tail. In SE-SNe, the epoch of this turnover defines the early nebular phase when emission lines start appearing in the spectra, and this is also the case for SN 2019cri. The two SNe are bluer than the average for the SE-SNe, a slightly lower scaling would better fit the colour curve of SN 2019dwa but it does serve to show that the scaled evolution of the objects are similar. The relationship between colour curves and reddening is well established (see Drout et al. 2011; Stritzinger et al. 2018) and

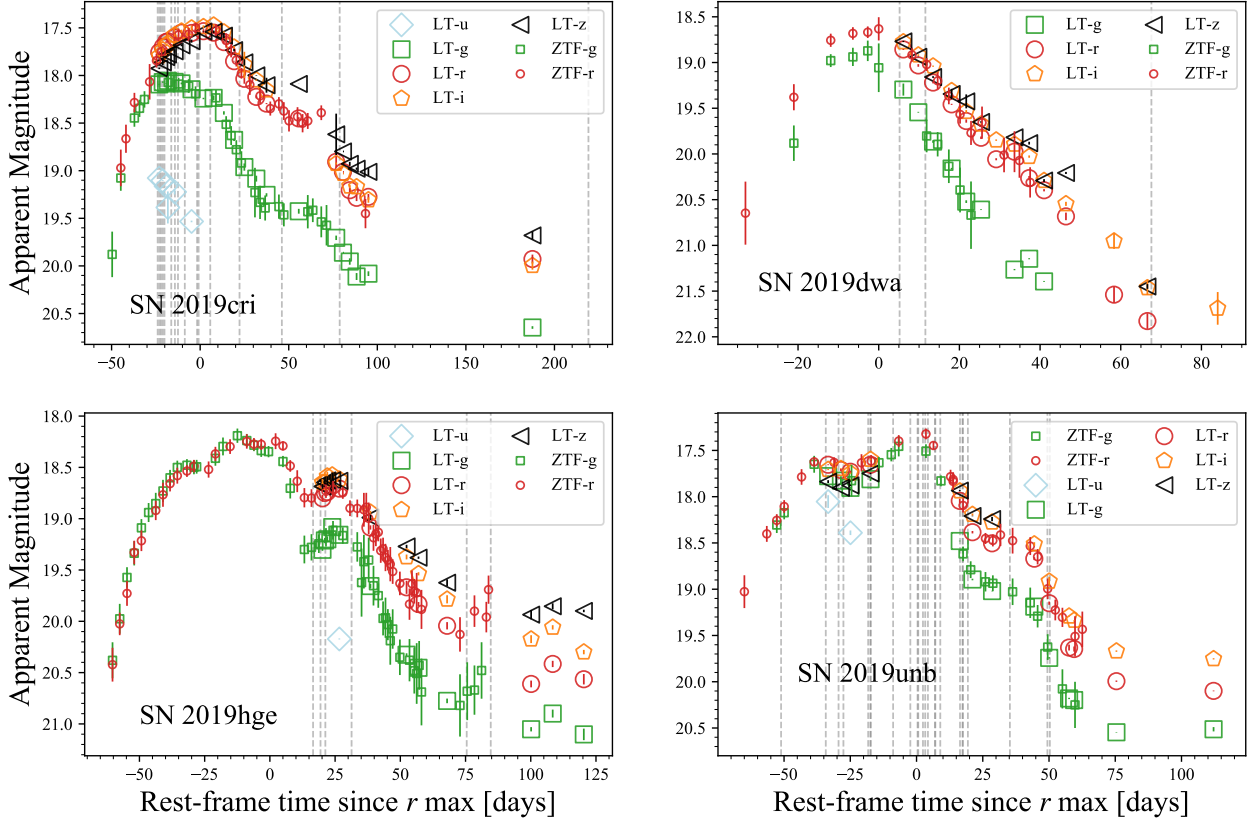


Figure 5. The multi-colour LT light curves of the four SNe featured here. Included in the figure is the public ZTF P60 photometry. **Top left:** SN 2019cri. **Top right:** SN 2019dwa. **Lower left:** SN 2019hge. **Lower right:** SN 2019unb. Grey dashed lines denote epochs of spectroscopic observations.

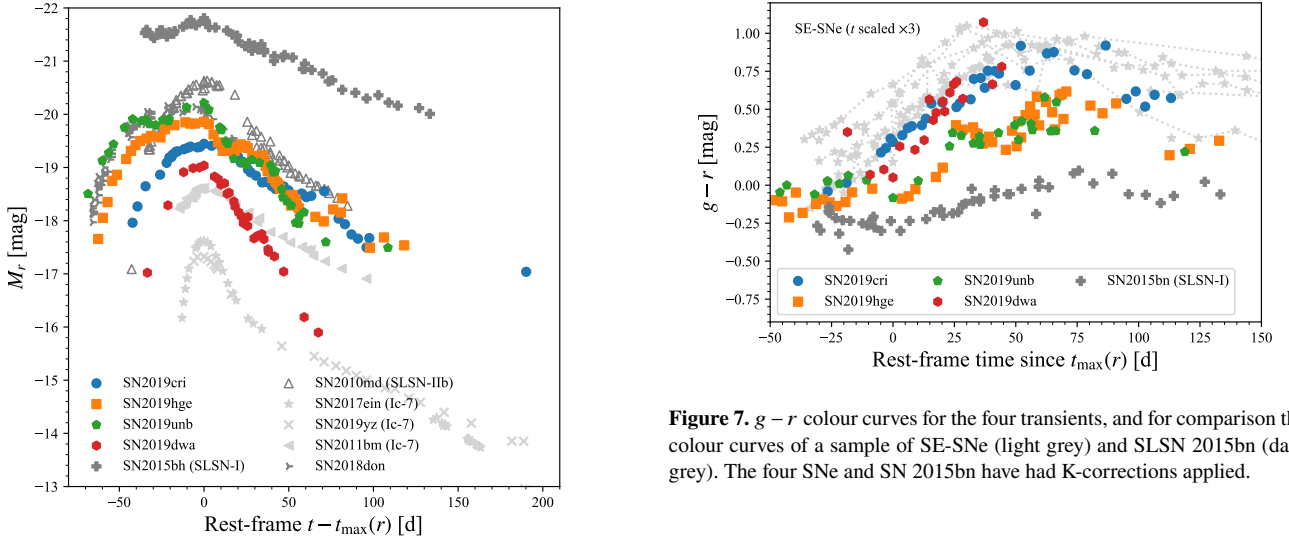


Figure 6. The absolute r -band magnitude of the four SNe. For comparison are a sample of SNe Ic-7 - SNe 2011bm (Valenti et al. 2011), 2017ein (Teffs et al. 2021), and 2019yz. SNe Ibc are generally found in the region bounded by these objects. Also included is a representative SLSN-I (SN 2015bn Nicholl et al. 2016a), as well as SLSN-Ib 2010md (Quimby et al. 2018) and luminous SN 2018don. The four SNe presented here lay between the two supernova groups, in a region known for the lack of H-poor CC-SNe. Despite the classification of SNe 2019hge and 2019unb as SLSNe, only SN 2019unb has $M_r < -20$ mag, and this only fleetingly.

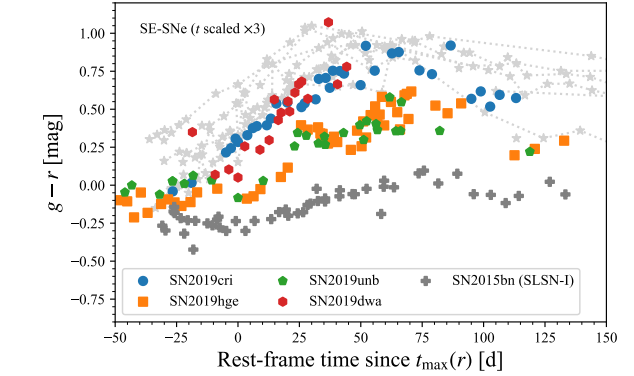


Figure 7. $g - r$ colour curves for the four transients, and for comparison the colour curves of a sample of SE-SNe (light grey) and SLSN 2015bn (dark grey). The four SNe and SN 2015bn have had K-corrections applied.

would suggest that the assumption of negligible $E(B - V)_{\text{host}}$ is valid.

SN 2019hge and 2019unb have very similar colour curves, especially in terms of the shape. They both start with a constant colour for some 50 days before evolving to the red, they then both take a series of blue-red-blue turn at similar times. They are bluer than the SE-SNe, but redder than the SLSNe but their colour curve shape is not similar to either, so no scaling will match the other objects in the same way as for SNe 2019cri and 2019hge.

4 SPECTROSCOPY

The previous section demonstrated that these SNe have peculiar light curve evolution compared with SE-SNe and SLSNe. In this section the spectroscopic observations of each object will be discussed in turn after we first establish each object's similarity to a reference object.

4.1 Comparison with other objects

The classification and parameters of the SNe in question depend upon similarity with known transients and their properties. This applies in particular in the line identification. Comparisons with various SE-SNe are shown in Fig. 8.

Starting with the simplest case first, that of SN 2019cri. It can be seen in Fig. 8 that this transient has very similar optical spectra to Type Ic-7, which are the narrow line H/He-poor SE-SNe (Prentice & Mazzali 2017). SNe in this sub-class include SN 2007gr (Hunter et al. 2009), which is shown for comparison, as well as SN 2011bm (Valenti et al. 2012), SN 2017ein (Teffs et al. 2021), SN 2005az, SN 2014L, and SN 2019yz⁸. These SNe are characterised by having the lowest photospheric velocities of SNe Ic but the largest range of light curve morphologies and luminosities, which suggests that objects in this spectroscopic sub-type can have a large range of ejecta masses M_{ej} and nickel masses M_{Ni} .

Next, we find that SN 2019dwa matches the spectra of several SNe Ic and SNe Ib, with a preference for the former. Our spectra are all more than a week after r -band maximum light, and SE-SNe at this phase become increasingly difficult to classify as their spectra tend to appear similar. The absence of strong He I lines at 6678 Å and 7065 Å would support that this is a SNe Ic. There is an absorption at 5800 Å, but this is likely to be due to Na I D rather than He I λ 5876. The comparison with Ic-7 SN 2007gr shows that this line is present in a similar strength in SNe Ic.

Finding comparison objects for SN 2019hge and SN 2019unb is considerably more difficult, as these are genuinely unusual objects spectroscopically. We attempted to match the early spectra, but no match with publicly available data was adequate. We did find matches to SE-SNe at the later phases of each object; SN Ib 2009jf (Valenti et al. 2011) for SN 2019hge, and Type IIB SN 1993J (Matheson et al. 2000) for SN 2019unb, these comparisons are shown in Fig. 8. As can be seen, the features of the transients overlap, although SN 2009jf is redder than the others. The SN 2009jf and SN 1993J spectra are not plotted in the rest frame, a redshift was artificially introduced to match the line velocities seen in the other two objects. Fundamentally, this is unimportant however, as line velocities vary from object to object and this shift can be replicated by comparing spectra with small shifts in velocity space (See Mazzali et al. 2017). SN 2019unb also matched the SLSN-Ib 2010md (Quimby et al. 2018; Shivvers et al. 2019) during its later phases, but it may also be said that SN 2010md matched He-rich SE-SNe in its later phases, and its peak luminosity was similar to that of SN 2019unb. The failure to find spectroscopically similar objects at earlier phases, and the later similarity to SN Ib/Ib, led to an exploratory attempt to replicate the early spectra of SNe 2019hge and 2019unb by convolving the pre-maximum spectra of several SE-SNe and a thermal continuum. This led to some success in replicating features in the earlier spectra that could be identified as Ca II H&K, Fe II, He I

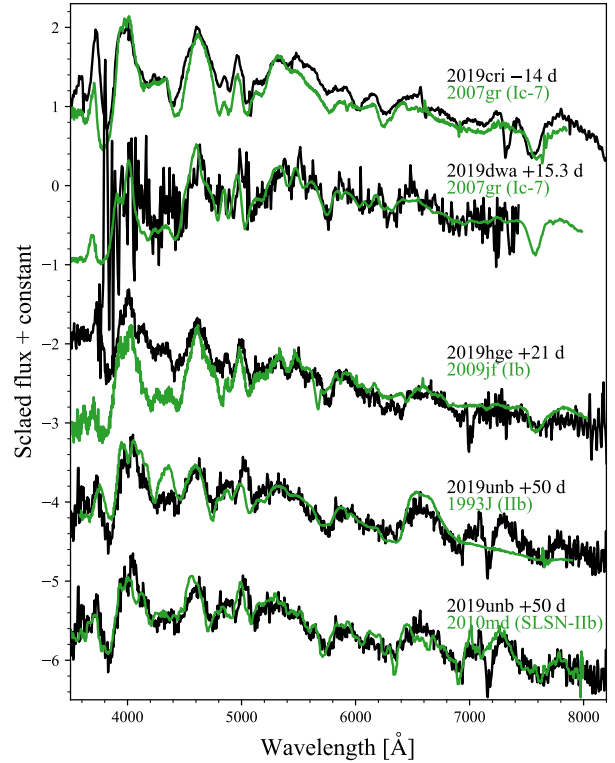


Figure 8. Spectroscopic comparisons between the four objects and spectra of SE-SNe in the photospheric phase. SNe 2019cri and 2019dwa match Ic-7 object, shown for comparison is SN 2007gr (Hunter et al. 2009). SN 2019hge is matched against the Type Ib 2009jf, and SN 2019unb against Type IIB SN 1993J and SLSN-Ib 2010md. Additional matches can be found between these objects and most SNe Ib and H-weak SNe IIB. Note that the comparison spectra have been shifted slightly in velocity space to match the line velocities of the target objects.

of Na I D, and H α or Si II. This is investigated in more detail in Section 5.3.

4.1.1 Classification

As has been demonstrated, SN 2019cri is spectroscopically similar to SNe Ic-7 and we retain this classification. Likewise, from limited spectroscopy of SN 2019dwa we find more of a match to narrow line SNe Ic-7 rather than to SNe Ib.

There exists no neat box in which to place SN 2019hge and SN 2019unb, they could be classified as SN Ib-pec and SN IIB-pec respectively, where ‘pec’ is short for ‘peculiar’, or SLSN-Ib/IIB. It has been shown that these objects, while luminous, are not clearly at SLSN luminosities. Therefore they may represent a transitional form of event that in different circumstances could lead to either a normal SN IIB or a SLSN.

4.2 The spectra of SN 2019cri

Figure 9 shows the spectroscopic observations of SN 2019cri. As previously discussed, the spectroscopic evolution is virtually identical to that of SNe Ic-7. The most significant difference is an absorption feature around 6100 Å. This is not usually seen in SE-SNe, and it may be O I λ 6158. The maximum light spectrum is modelled in Section 5.1 in order to investigate this feature.

⁸ Data for this object is presented in conjunction with this work.

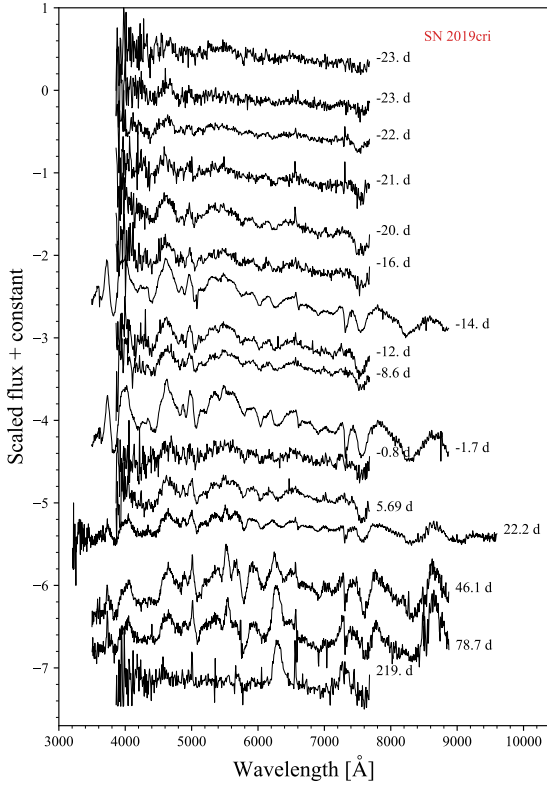


Figure 9. The spectroscopic sequence of SN 2019cri as observed by the LT and NTT. Despite the slow photospheric evolution, the SN enters the early nebular phase two months after maximum light, which is consistent with the timescales for normal SNe Ic. All phases are relative to the time of r -band maximum light.

The [O I] $\lambda\lambda 6300, 6364$ emission line is present in the spectra at +46.1 days, which would be a typical timescale for normal SE-SNe. This contrasts with the object’s unusual photometric evolution, which would lead one to expect a later transition into the early nebular phase. By +78.7 days, the [O I] $\lambda\lambda 6300, 6364$ line is the dominant feature in the spectrum, also present is the [Ca II] $\lambda\lambda 7291, 7323$ emission line. The observation coincides with the time that the light curve begins to fall rapidly again. At +219 days the spectrum is entirely nebular. Assuming that the entire emission line at ~ 6300 Å is from one [O I] $\lambda\lambda 6300, 6364$ doublet, the FWHM of the [O I] $\lambda 6300$ component is 5000 ± 200 km s $^{-1}$. This is at the very low end of the FWHM velocity distribution for SNe (Prentice et al. submitted), and shows that the relatively low photospheric velocities are also seen in the nebular phase. Finally, taking the flux ratio of [Ca II] $\lambda\lambda 7291, 7323$ /[O I] $\lambda\lambda 6300, 6364$ gives ~ 0.8 .

It is important to point out that there is no indication of H or He emission lines in the photospheric spectra, and there are no signatures within the spectra that mark the changes in the light curve. Spectroscopically, SN 2019cri is the same as any other Ic-7.

4.3 The spectra of SN 2019dwa

SN 2019dwa was too far North to be observed by ePESSTO+, so we obtained just three spectra for this object; two shortly after one another about a week after r maximum. Figure 10 shows that they are of low signal to noise but provide enough information to say that the spectra are not H or He rich and there are no signs of emission

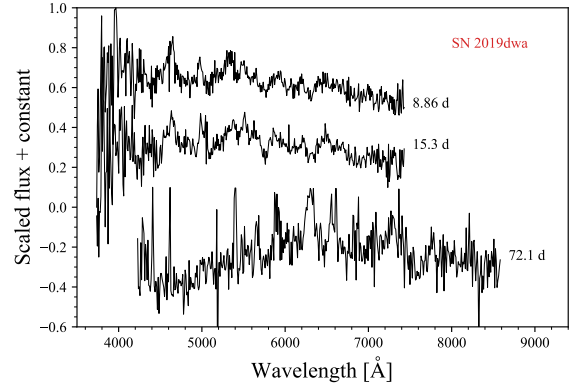


Figure 10. Spectroscopic observations of SN 2019dwa. The earliest two spectra are from the Liverpool Telescope. The final spectrum is from the WHT, and is affected by poor flux calibration. The important aspect of this spectrum is the presence of the [O I] $\lambda\lambda 6300, 6364$ and [Ca II] $\lambda\lambda 7291, 7323$ lines. There is also a narrow H α line present from the host galaxy. These confirm the core-collapse origin of this object and set the redshift at $z = 0.076$.

lines. The earliest spectra, taken just after r -band maximum, match well with that of SN Ic-7.

Two spectra were taken of the transient at +72.1 d using the WHT. The combined spectrum is noisy, and we reject any features that are not present in both spectra, but we can see that the dominant emission at this time is from [O I] $\lambda\lambda 6300, 6364$, also present is [Ca II] $\lambda\lambda 7291, 7323$ and Na I D. A full-width half-maximum measurement of the [O I] $\lambda 6300$ component to the doublet is 5000 ± 300 km s $^{-1}$. Like SN 2019cri, this is consistent with measurements of SE-SNe (Taubenberger et al. 2009) but is lower than the average. We also detect H α in emission, and an emission line at 5670 Å, which could be [N II] $\lambda 5680$. The presence of these lines provides a redshift of $z = 0.076 \pm 0.02$ for the transient. The H α line is noisy but thin, which suggests that it is emission from the host galaxy, this is discussed further in Section 2.1 where this interpretation is at odds with the photometry of the pre-explosion site. If this is the case, then this line may be weak emission from interaction.

4.4 The spectra of SN 2019hge

Our observations of SN 2019hge only began after the secondary maximum, these are presented in Fig. 11. At these epochs the spectra are typically SN Ib-like, with features from Fe II λ , Mg I λ , Ca II H&K, in the blue, He I $\lambda\lambda 5876, 6676, 7065$, in the mid part of the spectrum, and O I $\lambda 7774$ and the Ca II NIR triplet in the red. As with the previously discussed objects, there is no evidence for external influences on the spectra via IIn/Ibn like narrow emission lines that could explain the light curve variation.

The ZTF classification spectrum from MJD 58665.41 (Dahiwale et al. 2019) is 30 days after discovery (~ 48 rest-frame days prior to our first spectrum) and coincides with the brief flattening in the light curves during the rise. This spectrum is blue, as to be expected from the colours. The colour curves also suggest that this spectrum changes little in terms of continuum slope for much of the rise. This spectrum does not display the characteristic ‘w’ feature between 4000 – 5000 Å that is associated with O II and is common in SLSN-I.

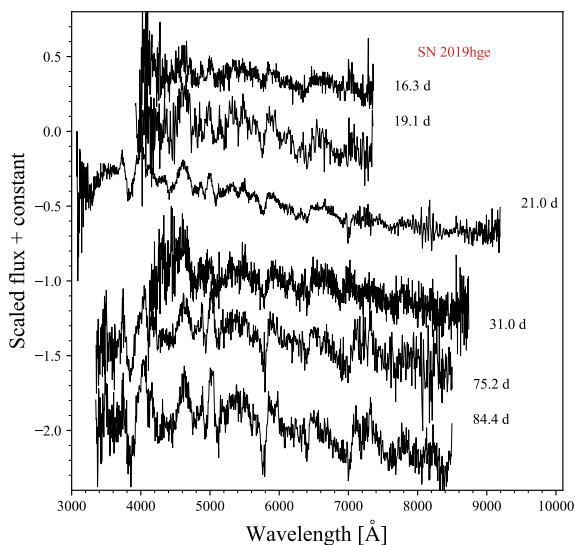


Figure 11. The spectra of SN2019hge, phases are in the rest-frame and relative to r maximum.

4.5 The spectra of SN 2019unb

Unlike SN 2019hge, SN 2019unb was recognised early as an unusual event. Our first series of spectra (Fig. 12) from -50 to $+7$ days are defined by a hot continuum with absorption present from Ca II H&K, He I $\lambda 5876$ and/or Na I D, and also possibly some weak Fe-group features between 4000 – 5000 Å. As with SN 2019hge these are revealed through a simple convolution between the spectra of SE-SNe and a thermal continuum, but it is also acknowledged that the temperature would suggest different ionisation regimes for the various elements and it is possible that such features may be a chance alignment. The spectra do not show the numerous C II and O II lines common to SLSNe, and as with the previous objects, we find nothing that evolves to trace the variations in the light curves and we find no obvious emission lines. The maximum light spectrum is modelled in Section 5.3.

Throughout its evolution, SN 2019unb displays a broad bump around 6563 Å, which becomes more prominent over time and which may be H α . There is no measurable absorption component to this line however, but it does suggest the presence of H in the ejecta. This would also support the presence of He and thus the comparison with SNe Ib/Iib.

4.6 Line velocities

To further characterise the properties of the SNe, photospheric phase line velocities were measured from the absorption minima of elements common to such transients. Figure 13 shows the measurements for Fe II $\lambda 5169$, Si II $\lambda 6355$, Ca II (due to limited spectroscopic wavelength, this is measured from both the NIR feature and H&K), and He I $\lambda 5876$ where possible. Also presented for comparison are a small sample of SNe Ib/Iib (Prentice et al. 2019b) and a sample of SNe Ic-7, including SN 2011bm.

4.6.1 Fe II $\lambda 5169$

In terms of Fe II velocity, all four transients have significantly lower velocities than any of the comparison objects. SN 2019cri shows evolution over time, from ~ 8000 km s $^{-1}$ to ~ 5000 km s $^{-1}$ and

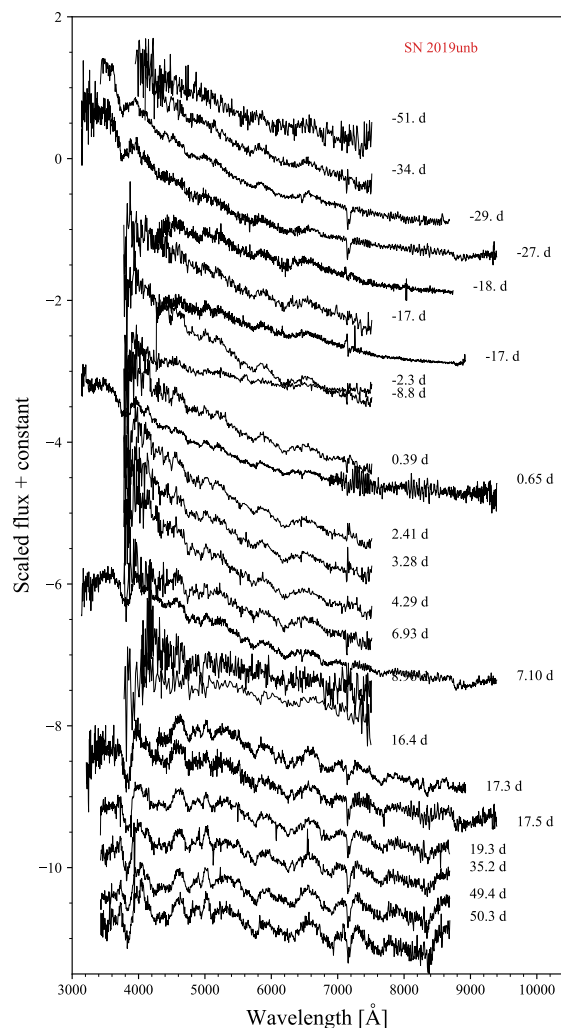


Figure 12. The spectroscopic sequence of SN 2019unb. Phases are relative to r maximum.

evolves on a similar timescale to SN 2011bm. If the velocity curve is scaled by $15/65$, which represents the ratio of rise times for a normal SNe Ic compared to SN 2019cri, then the curve shapes are similar between it and the SNe Ic-7, but with SN 2019cri being ~ 2500 km s $^{-1}$ slower. That the velocity decreases until around optical maximum light and then levels off, is characteristic to all SNe Ic. Only two measurements can be made of SN 2019dwa and both suggest that it also has low velocities at this phase. SN 2019hge was observed well after peak, and displays an Fe II velocity commensurate with SNe Ib/Iib ~ 6000 km s $^{-1}$. There is a reduction in this velocity over time to ~ 3000 km s $^{-1}$ at $+80$ days. SN 2019unb has the lowest maximum light Fe II velocity of all at $v \sim 4500$ km s $^{-1}$. The Fe II lines are not strong however, so measurement is made by considering Fe II $\lambda\lambda 4924, 5018$ as well. The measured velocities represent the only set of features that lined up with the strong series of Fe II lines between 4000 and 5000 Å. Comparison with SN 2009jf in Fig. 8 shows that the 4000 – 5000 Å regions are similar at later times. In SN 2009jf, which is one of the comparison objects in Fig. 13, the Fe II velocities are easily traceable.

4.6.2 Si II $\lambda 6355$

This line is commonly measured in SNe Ic, it can be seen in Fig. 13 that SNe 2019cri and 2019dwa have lower velocities than the SNe Ic-7. The maximum measured velocity for SN 2019cri is $\sim 6000 \text{ km s}^{-1}$ compared with $10\,000\text{--}12\,000 \text{ km s}^{-1}$ for the comparison objects. Both SN 2019cri and SN 2019dwa show a post-maximum velocity of $\sim 3000 \text{ km s}^{-1}$, approximately 4000 km s^{-1} slower than the SNe Ic.

4.6.3 Ca II

The velocity measurements of Ca II NIR and Ca II H&K show the most similarity to the comparison SNe. SNe 2019hge and 2019unb both follow the same track as the SNe Ib/Ib, as does SN 2019cri although this is a few 1000 km s^{-1} slower than the SNe Ic. Ca II is often found to evolve with similar velocities to Fe II (Prentice et al. 2019b), this is likely due to both being produced by primordial elements in the ejecta and so both trace the photosphere. This causes some tension for SN 2019unb with its standard Ca II velocity but very low Fe II velocity.

4.6.4 He I $\lambda 5876$

Finally, a comparison of the He I measurements for SNe 2019hge and 2019unb shows that they have lower line velocities compared to the bulk of these objects. However, scaling for rise times shows that the observed evolution of both are very similar to the SNe Ib/Ib. This line is often a blend of Na I and He I $\lambda 5876$ in SNe Ib, and in Section 5.3 it is shown that modelling can replicate this particular feature well with just Na I D. The strength of the feature pre-peak is comparable to SNe Ib rather than SNe Ic however, which would suggest that He I is present at this time.

4.6.5 Summary

The line velocities in the photospheric phase of these objects are generally lower than most, if not all of the comparison objects. The velocity curves evolve slowly, which partially reflects the long photometric evolution of these objects. However, the relative line velocities do not scale directly with the relative light curve time scales, for example, although SN 2019unb is approximately 4–5 time broader than a SN Ib its velocities are only approximately half by comparison. As with normal SNe, the velocities do not increase at any point. However, this is not well constrained as even changes of 10s of percent are below the resolution of the spectra. Slow velocity evolution can be produced by low specific kinetic energies and/or steep gradients in the ejecta density profile.

5 SNAPSHOT SPECTRAL MODELLING

Owing to the similarity of SN 2019cri and SN 2019dwa to SNe Ic, and the lack of obvious H and He in the maximum/pre-maximum spectra of SN 2019unb, we took the opportunity to make a “snapshot” model of the maximum light spectrum for each object using a well-established one-dimensional code for the synthesis of SN spectra (Mazzali & Lucy 1993; Lucy 1999; Mazzali 2000). The code, based on the Monte Carlo method, uses the Schuster-Schwarzschild approximation and enforces radiative equilibrium in the expanding SN ejecta. It requires as input a density/abundance distribution with radius (Stehle et al. 2005), as well as an emergent luminosity and

the epoch since explosion of the spectrum. Photons emitted at the photosphere are allowed to interact with the gas in the ejecta via absorption processes, which can be followed by re-emission in different lines, thereby implementing both fluorescence and reverse fluorescence processes, and to scatter off free electrons, which increases their residence time in the ejecta. Excitation and ionization are computed using the nebular approximation, which is appropriate in these low density environments (Pauldrach et al. 1996).

This code has been applied numerous times on stripped-envelope transients (e.g., Mazzali et al. 2002; Sauer et al. 2006; Mazzali et al. 2017; Ashall et al. 2019; Pian et al. 2020; Teffs et al. 2021), including SLSNe (Mazzali et al. 2016), and was used for a parameter study in relation to extremely energetic SNe Ic (Ashall & Mazzali 2020). For our models, we needed to create ad-hoc density profiles. Given that the SNe we analysed can be classified as Ic-7, which suggests a similar specific kinetic energy E_k/M_{ej} but that their light curves indicate a possible range of masses, we started with model CO21 (Nomoto et al. 1994), which was developed to model the spectra and light curves of Ic-6 SN 1994I. The initial abundances were based upon the work of Sauer et al. (2006). Next, we set suitable luminosities L and photospheric velocities v_{ph} in order to match the flux level and line velocity of the spectrum. We rescaled this model in M_{ej} and E_k using the rescaling equations of Hachinger et al. (2009). We used the assumption that objects with similar spectra have similar E_k/M_{ej} (e.g., Mazzali et al. 2013; Teffs et al. 2021). This was then used to constrain E_k to M_{ej} , with adjustments made to fit the line widths. The ejecta mass was found by fixing time of the spectrum $t - t_{exp}$ and then iterating the mass scaling until viable fits were found with a dilution factor of the model w is between 0.4 and 0.6. Finally, we adjusted the elemental abundances in order to optimise the fit to the observed spectra.

The process of determining optimal parameters is iterative, but when convergence is achieved it likely to point to the correct values given the model that has been used. While individual parameters can have uncertainties ranging from 5 to 25 per cent, when they are taken all together in a “best-fit model”, the uncertainty is likely to be much smaller, of the order of 5–10 percent (Ashall & Mazzali 2020).

5.1 Modelling the maximum light spectrum of SN 2019cri

The redshift and extinction corrected maximum light spectrum, in relation to the r -band, is dated 2019-05-14 and was observed by the NTT. A density profile with $M_{ej} = 10 M_{\odot}$ and $E_k = 4 \text{ foe}$ ($\text{foe} = 1 \times 10^{51} \text{ erg}$), and a specific kinetic energy of 0.4 [foe/M_{\odot}] was found to give appropriate model spectra at the required time t . This compares favourably with the 0.56 [foe/M_{\odot}] found for SN 2017ein (Teffs et al. 2021). The time since explosion $t - t_{exp} = 65$ days, with a photospheric velocity $v_{ph} = 5700 \text{ km s}^{-1}$. The abundance at this time assuming a single shell is 50% O, 29% C, 20% Ne, with the remaining 1% split between (in decreasing order) Mg, Si, S, Na, ^{56}Ni , ^{56}Fe , Ti, and Ca.

The kinetic energy was constrained through the width of the lines, in particular the Fe II and Mg I absorptions around 5000 \AA , which are distinct and are characteristic of SNe Ic-7. A larger kinetic energy leads to broader lines that blend together. This constraint on the kinetic energy is limited however, as it is sampling the lower velocity material. If the earlier spectra had displayed broader lines then this would have required a shallower density profile at these epochs which results in an increase in kinetic energy without an equivalent increase in ejecta mass, this then would increase the spe-

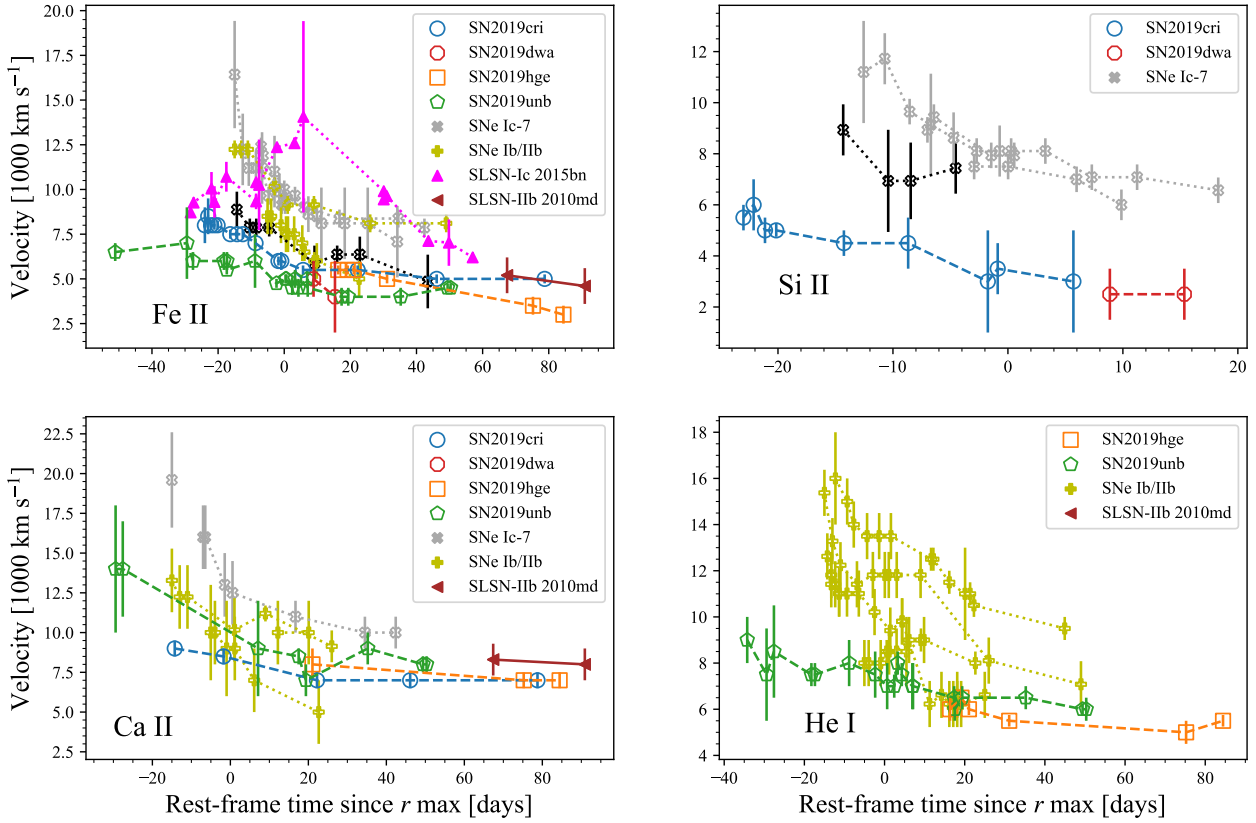


Figure 13. The line velocities measured as a function of time in comparison with SNe Ic-7 (dark grey, SN 2011bm emphasised in black), SNe Ib/Ib (yellow), SLSN-Ic 2015bn (magenta; Liu et al. 2017b) and SLSN-Ib (brown; Inserra et al. 2013). **Top left:** Fe II $\lambda 5169$. **Top right:** Si II $\lambda 6355$. **Lower left:** Ca II. **Lower right:** He I $\lambda 5876$.

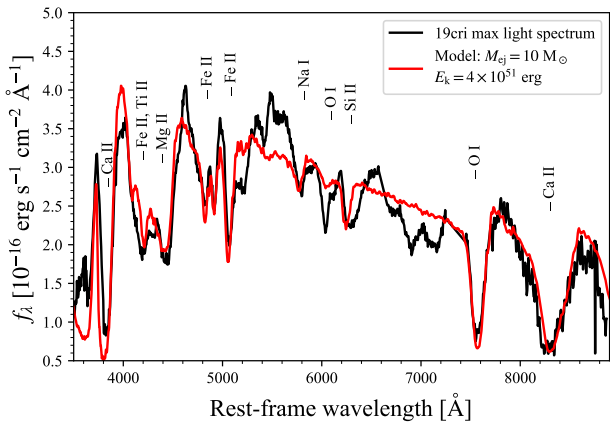


Figure 14. Snapshot modelling of SN 2019cri using a density profile of $10 M_{\odot}$ and $E_k = 4 \times 10^{51}$ erg.

cific kinetic energy (Mazzali et al. 2013). The photospheric velocity at this epoch is consistent with the measured line velocities in the spectra (see Section 4.6).

Despite this, a point of concern remains; the density profile used to give this snapshot is designed to produce the standard light curve of a supernova and could not replicate the variations seen in the post-peak light curves of SN 2019cri. Part of the problem is that energy deposition from the ^{56}Ni decay chain decreases in

a predictable manner over time, and that the light curve variations are achromatic in the optical. There are no indicators in the spectra either to suggest this is a recombination effect, as in the secondary bump in the r band light curves of SNe Ia. Speculatively, this may then suggest that the luminosity variation is due to an increase in continuum flux and may arise from thermalisation of energy emitted from a source in the interior of the ejecta.

5.2 The +8 day spectrum of SN 2019dwa

For SN 2019dwa, the +8.7 day spectrum is used. It has unfortunately low S/N and presents a limited wavelength range of approximately 4000 - 7400 Å in the SN rest-frame. The spectrum is still quite blue compared with SE-SNe at this relative age, but shows signs of being evolved, such as deep absorption features and low velocities. A similar process for SN 2019cri was used to find a density profile suitable combination of M_{ej} and E_k . The provisional model has $M_{\text{ej}} = 6 M_{\odot}$ with $E_k = 6$ foe, giving $E_k/M_{\text{ej}} = 1$ [foe/ M_{\odot}], at $t - t_{\text{exp}} = 45$ days with $v_{\text{ph}} = 3000$ km s $^{-1}$. The ions responsible for the features in the range 4000–5300 Å are mainly Mg II Fe II and Fe III. In the intermediate region we find Na I D and Si II $\lambda 6355$, with also the likely detection of Sc II resulting in absorptions, most prominently between 5400–5600 Å. Sc is also identified through spectral modelling in the post-maximum spectra of SN 2017ein (Teffs et al. 2021). The abundances used in the one-zone model at this time are 25% O, 20% Ne, 15% Si, 15% C, 10% Na, 9% ^{56}Ni , and 1% Sc and 5% split between Ca, Mg, ^{56}Fe , and S.

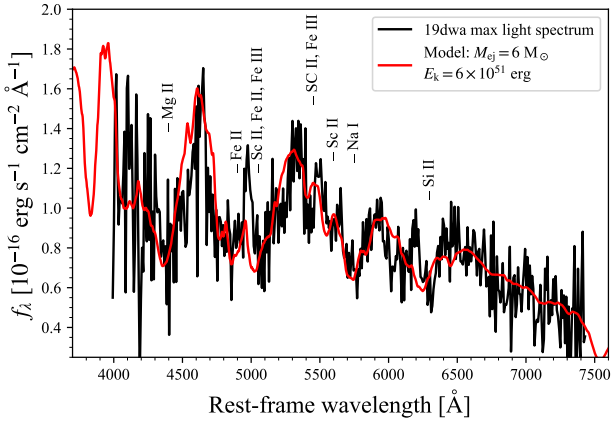


Figure 15. Modelling of SN 2019dwa using a density profile of $6 M_{\odot}$ and $E_k = 6 \times 10^{51}$ erg.

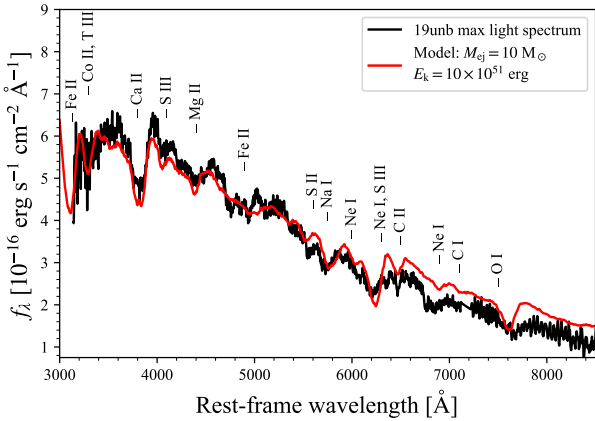


Figure 16. Modelling of SN 2019unb using a density profile of $10 M_{\odot}$ and $E_k = 10 \times 10^{51}$ erg. Time since explosion is 80 days. This snapshot recreates most of the features seen in the observed spectrum.

5.3 SN 2019unb at +7.2 days

The spectrum +7.2 days after r -band maximum of SN 2019unb is not dominated by H or He, so the same method can be applied to model this spectrum. Through an iterative process, a density profile with $M_{ej} = 10 M_{\odot}$ and $E_k = 10$ foe was chosen. The time since explosion $t - t_{exp} = 80$ days, and photospheric velocity $v_{ph} = 4900$ km s $^{-1}$. The low v_{ph} supports the Fe II velocities that were measured in Section 4.6. The spectra do not extend blueward enough to constrain the flux below 3200 Å, but the total bolometric luminosity of the model is 2.6×10^{43} erg s $^{-1}$ (−19.8 mag), comparable to the peak of M_r at this time. The ejecta composition is typical for a massive star; Ca, C, O, S, Si, Fe, Na, Ne. In the model, the abundances are 35% O, 40% C, 20% Ne, with the remaining 5% split between Na, Si, S, Mg, ^{56}Fe , and ^{56}Ni . This leads to an overly strong O I $\lambda 7774$ line in the one shell model. A solution to this would be to place some of the excess mass that is in the O fraction into an element that is not strong in the optical, which could be He. The presence of a “H α bump” in the later spectra would suggest some presence of H, and therefore He, in the ejecta. However, at this phase neither

are identified⁹. For the H Balmer features this is likely because the photospheric temperature is ~ 8000 K and so H is mostly ionised. Helium, on the other hand, needs to be non-thermally excited by the decay products of the ^{56}Ni decay chain, but at 80 days most of the ^{56}Ni and its daughter nuclei have decayed to ^{56}Fe .

6 DISCUSSION

6.1 Powering mechanisms

In addition to the large kinetic energies required, which exceed those for explosion modelling (Müller 2015), the luminous, long-lived, and variable light curves of these objects leads to the question of the powering mechanism. Here we discuss a few potential sources for powering of these events.

The analytical equations of Arnett (1982) can be used to estimate the mass of ^{56}Ni required to power the respective light curves. This “back of the envelope” calculation is used purely to illustrate the difficulty in powering these objects with ^{56}Ni . If we take the basic approximation that M_r approximated the absolute magnitude at bolometric maximum, then we can convert these values to cgs luminosity units. Combining this with the rise time and using the formulation of “Arnett’s Rule” given in Stritzinger & Leibundgut (2005) we get the following back-of-the-envelope M_{Ni} estimates of $\sim 1.5 M_{\odot}$ for SN 2019cri, $\sim 1 M_{\odot}$ for SN 2019dwa, $\sim 3.5 M_{\odot}$ for SN 2019hge, and $\sim 4.7 M_{\odot}$ for SN 2019unb. These should be considered an upper limit, as recent explosion models have suggested that “Arnett’s Rule” could lead to an overestimate of the ^{56}Ni mass (Khatami & Kasen 2019). In each case, the estimated M_{Ni} would still constitute a considerable fraction of the ejecta mass. This would lead to SN Ia-like temperatures, line blanketing, and emission dominated by Fe-group lines in the later phases, which is not seen. Instead, the results of the spectral modelling suggests that the amount of Fe group elements is relatively comparable to that in normal core-collapse events. This also rules out possibility of these events being pair-instability SNe, as the ejected mass is far too small.

If, as is most likely, that ^{56}Ni is not the power source behind these objects then we must look to alternative options. An easy way to reach the luminosities seen in these objects along with the variations in the light curves, is to have the ejecta interact with CSM. In this process, a small fraction of the kinetic energy is converted to radiative energy, and because $E_k \sim 10^{51}$ erg for a typical SN, this provides an ample energy reservoir to power the light curves. Under normal circumstances, the effect of ejecta interacting with CSM is prominent spectroscopic narrow emission lines of H or He, depending on the CSM composition. This respectively leads to Type IIn and Type Ibn SNe, both of which can reach luminosities greater than the object featured in this work (e.g. Hosseinzadeh et al. 2017; Nyholm et al. 2020). It was noted in Section 4 that none of these objects show emission lines consistent with CSM interaction. We can consider this an external process, as the energy injection occurs on the outside of the ejecta, however interaction has been proposed as a way to power the transitional event PTF11rka without explicit spectroscopic signatures of interaction (Pian et al. 2020).

An internal process would include radioactive powering (e.g.

⁹ Both H and He require NLTE treatment, which is beyond the scope of this work. However, while He I $\lambda 5876$ may contribute some small amount to the Na I feature in the modelled spectrum, H is entirely absent.

^{56}Ni and ^{56}Co decay), or some physical process that taps the rotational energy of a compact object. In this latter category we find black-hole accretions and magnetars. Magnetars are rapidly rotating highly magnetised neutron stars. Their energy reservoir and energy injection rate is governed by two parameters; the period P of rotation and the strength of the magnetic field B . Magnetars with millisecond spin periods and $B \sim 10^{15}$ Gauss can have a total rotational energy of $> 1 \times 10^{52}$ erg and provide a diverse range of monotonically decreasing energy injection rates. These objects are commonly invoked for SLSNe, as they provide a way to power these objects without requiring tens of solar masses of ejecta and several solar masses of ^{56}Ni , which is difficult to synthesise. Although most of the spin-down power must be thermalised in order to explain the high continuum luminosities of SLSNe, possible signatures of magnetar powering are present in the spectrum: at early times, broad O II lines seen in most SLSNe and some lower-luminosity SNe could indicate non-thermal ionization in rapidly expanding ejecta (Mazzali et al. 2016, Parrag et al., submitted), while at nebular phases a central energy source is needed to power a prominent O I recombination line (Jerkstrand et al. 2017; Nicholl et al. 2016b, 2019). However, the transitional events studied here lack O II lines and we have few nebular phase spectra. Another possible means to test the presence of a central engine is via the evolution of the photospheric velocity. Kasen & Bildsten (2010) suggested that magnetars may be able to produce cavities at the base of the ejecta equivalent to pulsar winds, with the consequence being that ejecta is pushed from below and accelerated into ejecta above, forming a high density ‘‘wall’’. An observational effect of this density spike could be a flat or very slow velocity evolution in spectroscopic lines. However, this density spike may also be an artefact of one-dimensional simulations, and can be washed out by turbulent mixing in higher dimensions (Chen et al. 2016), but simulations suggest this is energy-dependent (Suzuki & Maeda 2019, 2021).

The line velocities in the objects here are indeed slow, amongst the slowest evolving seen in stripped CC-SNe. SN 2019cri provides a good comparison because another explanation for low, and slowly evolving velocities is low energy. However, comparison of the line velocity curves in Fig. 13 with SN Ic-7 (equivalent specific kinetic energy) shows that this is not an impediment to having a relatively normal velocity profile.

A central compact object powering these SNe is an attractive idea. The evidence suggests that the powering source is probably not external unless all four objects were able to hide the CSM interaction below their photosphere. The luminosity variability of such an object, perhaps through accretion, is also a possible way to explain the variations in the light curves without affecting the appearance of the optical spectra.

6.2 Undulations and their origin

As observed in Section 3.1, these objects show some degree of undulations in their luminosity evolution. This is reminiscent of what observed in SLSNe I like SN 2015bn (Nicholl et al. 2016a; Inserra et al. 2017). To explore this further, we fitted a first-order polynomial to the bolometric light curve from the peak to the end of the available photometry. The choice of using the bolometric allows us to avoid an analysis dominated by line evolution within a particular passband. The bolometric light curves (cfr. Figure 17, top panel) were built following the procedure outlined in Inserra et al. (2018a). The choice of a linear fit is due to the fact that SE-SNe are usually well reproduced by models having a steady decline over the available timescale. The residuals in Fig. 17 (bottom panel) show

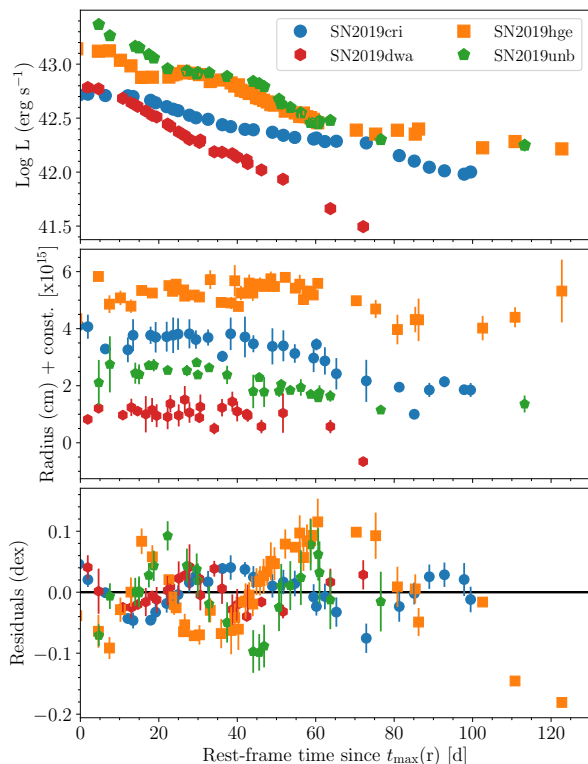


Figure 17. **Upper panel:** After peak bolometric light curves of our transitional objects. **Middle panel:** photospheric radius evolution as derived from black-body fitting of the spectral energy distribution. **Lower panel:** residuals, after subtracting fits to the declining bolometric light curve.

clear fluctuation of the order of roughly 0.1 dex for SN 2019hge (at ~ 20 d and ~ 70 d) and SN 2019unb (at ~ 20 d and ~ 60 d) and possibly also in SN 2019cri at ~ 70 d. Nothing conclusive can be said for SN 2019dwa as any possible fluctuation is at the same level of the uncertainties. This reflects what observed in the single broadband filters. Such fluctuations are a factor of 10 larger than the uncertainties, and roughly a factor of 2 larger than what observed in ‘slow’ SLSNe I (e.g. Nicholl et al. 2016a; Inserra et al. 2017; Inserra 2019).

In a normal SN scenario, such fluctuations might be caused by a change in the density profile of the emitting region. Such a change is also usually reflected by a change in the radius evolution of the photosphere (Liu et al. 2018). Hence, we derived the radius evolution via the Stefan-Boltzmann law and using as input the bolometric light curve and the temperature evolution derived by fitting the available spectra energy distribution with a Planck function. The radius evolution displayed in Fig. 17 (middle panel) do not show any stark change in the radius evolution. Nevertheless, a change in the line/ions is observed in the spectra evolution. Another viable alternative to produce such undulations is via interaction with a small amount of CSM material as observed in interacting transients (e.g. Smith et al. 2012). Using the scaling relation presented by Smith & McCray (2007) $L \approx M_{\text{CSM}} v^2 / 2t$ and assuming an average half-period of the fluctuation of $t = 10$ day (only the fluctuation at 70d of SN 2019hge has half-period of 20 days), average luminosity of $L = 10^{43}$ erg s^{-1} and velocity of 5000 km s^{-1} we obtain CSM masses of $0.03 - 0.07 M_{\odot}$. As this seems periodic, they might be the consequence of a close binary scenario for the progenitor, which cause an heterogeneous structure of the CSM and could also explain

the absence of interaction signature in the spectra due to a clumpy structure or viewing angle (Moriya et al. 2015).

6.3 SN 2019cri and Ic-7

The narrow lines of SNe Ic-7 are indicative of steep ejecta density profiles which results in low specific kinetic energy. The model spectrum presented here of SN 2019cri agrees with the E_k/M_{ej} found for SN 2017ein by Teffs et al. (2021). It becomes difficult to explain why objects with such diverse photometric properties should display so similar spectroscopic properties. The possible powering mechanisms for the four SNe featured in this work were discussed previously, and it was stated that the light curve of SN 2019cri is incompatible with a pure ^{56}Ni decay model. The question then arises; if SN 2019cri need not be powered primarily by ^{56}Ni then why should the other objects of this class? It then becomes pertinent to examine SN 2011bm in this context. This transient requires $\sim 0.7 M_{\odot}$ of ^{56}Ni to power its peak luminosity, comparable to SNe Ia, and $7 - 11 M_{\odot}$ of ejecta (via Arnett Valenti et al. 2012) to display such a broad light curve. Prentice et al. (submitted) show that if the ratio of $[\text{Ca II}] \lambda\lambda 7291, 7323$ to $[\text{O I}] \lambda\lambda 6300, 6364$ for this object is compared with other SE-SNe, where the ejecta masses are typically $\sim 3 M_{\odot}$, then SN 2011bm takes the same ratio as low mass objects. In Section 4.2 a value of ~ 0.8 was calculated for SN 2019cri. Figure 18 shows that this object sits above is an outlier compared with other SNe Ic. This ratio is assumed to trace oxygen core mass (Fransson & Chevalier 1987), which itself is a proxy for M_{ej} in stripped supernovae. Prentice et al. (submitted) suggest that one possible reason for this is that the powering mechanism of SN 2011bm is not predominantly via the ^{56}Ni decay chain and also pointed to lack of strong Fe II and Fe III emission lines in its nebular spectra. In SN 2019cri we find an object that is more extreme, where ^{56}Ni is disfavoured as the primary powering source. Fortunately, this transient was followed into the early nebular phase. By taking the $[\text{Ca II}]/[\text{O I}]$ ratio this object can be placed in context, and it is found that the ratio is even larger than for the SE-SNe. This could suggest that the slow evolution of this object is not due to a large ejecta mass, but perhaps a dense wall within the ejecta profile, perhaps blown by a magnetar (Kasen & Bildsten 2010). Another possibility is that the $[\text{Ca II}]$ line is contaminated or even dominated by $[\text{O II}]$, artificially inflating the $[\text{Ca II}]/[\text{O I}]$ ratio, if oxygen in the ejecta remains ionised into the nebular phase (Jerkstrand et al. 2017). This can occur due to ‘freeze-in’ of the ionisation state in ejecta heated by a power-law central engine (Margalit et al. 2018).

7 CONCLUSIONS

SN 2019unb and SN 2019hge have both been classified as super-luminous supernovae, yet, photometrically they are close to SNe Ib/c in terms of luminosity (they sit close to the $M = -19.8$ mag boundary defined by Quimby et al. 2018), strengthening the case that a more robust definition, ideally linked to the spectroscopic evolution, is needed (Gal-Yam 2019; Inserra 2019). Spectroscopically they share few similarities with the canonical SLSN, they lack the O II and C II lines seen in their early spectra, but they do not share the same evolution timescales as they are more similar to SNe Ib/IIb at later times than normal SLSN. It was noted that convolving a black body with a SN Ib spectrum gave a good approximation to the early spectra of SN 2019unb and spectral modelling suggests a $10 M_{\odot}$ ejecta and normal relative abundances compared with SN Ib.

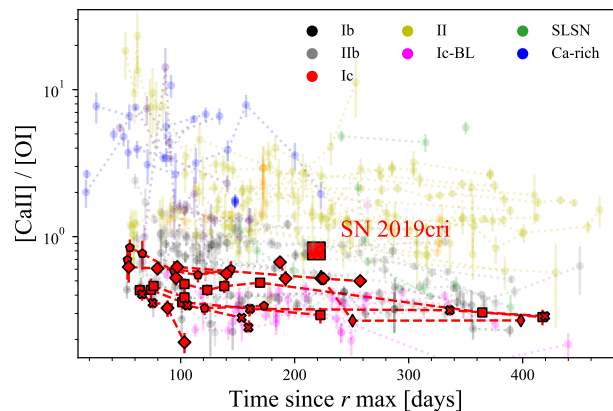


Figure 18. The $[\text{Ca II}] \lambda\lambda 7291, 7323/[\text{O I}] \lambda\lambda 6300, 6364$ plane (Prentice et al., submitted) with SN 2019cri (red square) in context against SNe Ic (red) and other transients (see legend). The ratio of SN 2019cri is marginally larger than SNe Ic at the same epoch. It may be expected however, that if this ratio is a measure of core oxygen mass, that SN 2019cri would be lower than the other transients based upon the light curve and snapshot spectral model, which would indicate a relatively large O mass.

SNe 2019cri and 2019dwa, are similar to SE-SNe, especially SN Ic-7; displaying narrow Fe II lines. Snapshot spectral modelling of the maximum light spectra suggests these transients may have large ejecta masses or 10 and $6 M_{\odot}$ respectively, and a specific kinetic energy of ~ 1 , although we add a note of caution with these results. It also shown that SN 2019cri evolves spectroscopically on a timescale typical of SE-SNe after maximum and that the appearance of $[\text{O I}] \lambda\lambda 6300, 6364$ coincides with a drop in luminosity. We suggest that this may be evidence for a density ‘‘wall’’ within the ejecta, whereby the line forming region drops from a high to low density region and so the spectra change appearance relatively rapidly. This is analogous to the bubble blown by a pulsar wind and has been shown to occur in the presence of a magnetar.

The variability and luminosity of the light curves preclude powering from a purely radioactive source, while the variability itself suggests either variation in the powering source or a non-monotonic ejecta density profile. Given the absence of any clear emission lines associated with CSM interaction in any of the objects, we suggest that the powering mechanism for the light curve and ejecta dynamics is likely dominated by energy from a compact source.

It is demonstrated that the hosts of these SNe are consistent with that of SLSNe; low mass and high star formation rates, with the exception of SN 2019hge, which was hosted in a high mass galaxy with a high star formation rate. Considering the inferred ejecta masses along with the presence of these events in star forming galaxies, it is likely that the progenitors of these objects are more massive than they that typically associated with SE-SNe and more akin to SLSNe.

If these objects are to be placed within the existing taxonomy, the classification should reflect physical parameters of the objects. In this case we can summarise these two events as follows:

- They have He-rich ejecta, possibly also a thin H shell.
- They have extremely low ejecta velocities in comparison with other SNe.
- Their light curves are luminous and variable which might be a hint of a binary system scenario (for at least some of them).

- Their early spectra are hot, and their early colour evolution suggests this is the case for many weeks.
- Spectroscopically they display no obvious signs of CSM interaction.

We can only hypothesise as to what powers these events, and there exists no theoretical model to explain their observed properties. Given the spectroscopic similarity with SNe Ib/Ib it may be useful to consider them as a peculiar sub-class of these events. It would also not be the first time that SNe Ib/Ib have displayed unusual photometric properties. Prior to this was the case of SN 2005bf and its double peaked light curve that reached $M_r \sim -18.5$ in nearly 60 days.

An increasing number of these rare objects are now being found and prove the diversity of SNe between SLSNe I and SE-SNe. To understand them, we need to address the following questions: do SE-SNe and SLSNe represent a continuous class of objects as suggested by the luminosity function, or are they separable, as suggested by their spectroscopic sequence? Can high resolution spectroscopy show a relationship between the ejecta velocity and light curve variation? If so, this could represent deviation away from a power law ejecta density profile.

ACKNOWLEDGEMENTS

KM, MRM, SJP are supported by H2020 ERC grant no. 758638. L.G. acknowledges financial support from the European Union's Horizon 2020 research and innovation programme under the Marie Skłodowska-Curie grant agreement No. 839090, and from the Spanish Ministry of Science, Innovation and Universities (MICIU) under the 2019 Ramón y Cajal program RYC2019-027683. TMB was funded by the CONICYT PFCHA / DOCTORADO BECAS CHILE/2017-72180113. MG is supported by the EU Horizon 2020 research and innovation programme under grant agreement No 101004719. SGG acknowledges support by FCT under Project CRISP PTDC/FIS-AST-31546/2017. MN is supported by a Royal Astronomical Society Research Fellowship and H2020 ERC grant no. 948381. T.-W.C. acknowledges the EU Funding under Marie Skłodowska-Curie grant H2020-MSCA-IF-2018-842471. The Liverpool Telescope is operated on the island of La Palma by Liverpool John Moores University in the Spanish Observatorio del Roque de los Muchachos of the Instituto de Astrofísica de Canarias with financial support from the UK Science and Technology Facilities Council. Based on observations collected at the European Organisation for Astronomical Research in the Southern Hemisphere, Chile, as part of ePESSTO+ (the advanced Public ESO Spectroscopic Survey for Transient Objects Survey). ePESSTO+ observations were obtained under ESO program ID 1103.D-0328 (PI: Inserra). The WHT is operated on the island of La Palma by the Isaac Newton Group of Telescopes in the Spanish Observatorio del Roque de los Muchachos of the Instituto de Astrofísica de Canarias. SJP thanks GPL for many insightful discussions at the bar over the last few years.

DATA AVAILABILITY

Data will be made available on the Weizmann Interactive Supernova Data Repository (WISeREP) at www.wiserep.org.

REFERENCES

- Ahn C. P., et al., 2012, *ApJS*, **203**, 21
 Ahn C. P., et al., 2014, *ApJS*, **211**, 17
 Angus C. R., et al., 2019, *MNRAS*, **487**, 2215
 Arnett W. D., 1982, *ApJ*, **253**, 785
 Ashall C., Mazzali P. A., 2020, *MNRAS*, **492**, 5956
 Ashall C., et al., 2019, *MNRAS*, **487**, 5824
 Barnsley R. M., Smith R. J., Steele I. A., 2012, *Astronomische Nachrichten*, **333**, 101
 Bellm E. C., et al., 2019, *PASP*, **131**, 018002
 Bose S., et al., 2018, *ApJ*, **853**, 57
 Bourne N., et al., 2012, *MNRAS*, **421**, 3027
 Breeveld A. A., Landsman W., Holland S. T., Roming P., Kuin N. P. M., Page M. J., 2011, in McEnery J. E., Racusin J. L., Gehrels N., eds, American Institute of Physics Conference Series Vol. 1358, American Institute of Physics Conference Series. pp 373–376 ([arXiv:1102.4717](https://arxiv.org/abs/1102.4717)), [doi:10.1063/1.3621807](https://doi.org/10.1063/1.3621807)
 Buzzoni B., et al., 1984, *The Messenger*, **38**, 9
 Byler N., Dalcanton J. J., Conroy C., Johnson B. D., 2017, *ApJ*, **840**, 44
 Calzetti D., Armus L., Bohlin R. C., Kinney A. L., Koornneef J., Storchi-Bergmann T., 2000, *ApJ*, **533**, 682
 Cardelli J. A., Clayton G. C., Mathis J. S., 1989, *ApJ*, **345**, 245
 Chabrier G., 2003, *PASP*, **115**, 763
 Chambers K. C., et al., 2016, arXiv e-prints, [p. arXiv:1612.05560](https://arxiv.org/abs/1612.05560)
 Chen K.-J., Woosley S. E., Sukhbold T., 2016, *ApJ*, **832**, 73
 Chen T.-W., Smartt S. J., Yates R. M., Nicholl M., Krühler T., Schady P., Dennefeld M., Inserra C., 2017, *MNRAS*, **470**, 3566
 Chen T. W., et al., 2018, *ApJ*, **867**, L31
 Dahiwalé A., Fremling C., 2020, Transient Name Server Classification Report, [2020-1504](https://arxiv.org/abs/2020.1504), 1
 Dahiwalé A., Dugas A., Fremling C., 2019, Transient Name Server Classification Report, [2019-2859](https://arxiv.org/abs/2019-2859), 1
 De Cia A., et al., 2018, *ApJ*, **860**, 100
 Dey A., et al., 2019, *AJ*, **157**, 168
 Drout M. R., et al., 2011, *ApJ*, **741**, 97
 Filippenko A. V., 1997, *ARA&A*, **35**, 309
 Fransson C., Chevalier R. A., 1987, *ApJ*, **322**, L15
 Fremling C., Dugas A., Sharma Y., 2019, Transient Name Server Classification Report, [2019-799](https://arxiv.org/abs/2019-799), 1
 Frohmaier C., et al., 2021, *MNRAS*, **500**, 5142
 Gal-Yam A., 2012, *Science*, **337**, 927
 Gal-Yam A., 2019, *ARA&A*, **57**, 305
 Gehrels N., et al., 2004, *ApJ*, **611**, 1005
 Gomez S., Berger E., Hosseinzadeh G., Blanchard P. K., Nicholl M., Villar V. A., 2021, arXiv e-prints, [p. arXiv:2103.02611](https://arxiv.org/abs/2103.02611)
 Hachinger S., Mazzali P. A., Taubenberger S., Pakmor R., Hillebrandt W., 2009, *MNRAS*, **399**, 1238
 Hinshaw G., et al., 2013, *ApJS*, **208**, 19
 Hosseinzadeh G., et al., 2017, *The Astrophysical Journal*, **836**, 158
 Hunter D. J., et al., 2009, *A&A*, **508**, 371
 Inserra C., 2019, *Nature Astronomy*, **3**, 697
 Inserra C., Smartt S. J., 2014, *ApJ*, **796**, 87
 Inserra C., et al., 2013, *ApJ*, **770**, 128
 Inserra C., et al., 2017, *MNRAS*, **468**, 4642
 Inserra C., et al., 2018a, *MNRAS*, **475**, 1046
 Inserra C., Prajs S., Gutierrez C. P., Angus C., Smith M., Sullivan M., 2018b, *ApJ*, **854**, 175
 Jerkstrand A., et al., 2017, *ApJ*, **835**, 13
 Kasen D., Bildsten L., 2010, *ApJ*, **717**, 245
 Khatami D. K., Kasen D. N., 2019, *ApJ*, **878**, 56
 Lang D., 2014, *AJ*, **147**, 108
 Leja J., Johnson B. D., Conroy C., van Dokkum P. G., Byler N., 2017, *ApJ*, **837**, 170
 Leloudas G., et al., 2015, *MNRAS*, **449**, 917
 Liu Y.-Q., Modjaz M., Bianco F. B., 2017a, *ApJ*, **845**, 85
 Liu Y.-Q., Modjaz M., Bianco F. B., 2017b, *ApJ*, **845**, 85
 Liu L.-D., Zhang B., Wang L.-J., Dai Z.-G., 2018, *ApJ*, **868**, L24

Lucy L. B., 1999, *A&A*, **345**, 211
Lunnan R., et al., 2020, *ApJ*, **901**, 61
Lyman J. D., Bersier D., James P. A., Mazzali P. A., Eldridge J. J., Fraser M., Pian E., 2016, *MNRAS*, **457**, 328
Mainzer A., et al., 2014, *ApJ*, **792**, 30
Margalit B., Metzger B. D., Berger E., Nicholl M., Eftekhari T., Margutti R., 2018, *MNRAS*, **481**, 2407
Martin D. C., et al., 2005, *ApJ*, **619**, L1
Matheson T., et al., 2000, *AJ*, **120**, 1487
Mazzali P. A., 2000, *A&A*, **363**, 705
Mazzali P. A., Lucy L. B., 1993, *A&A*, **279**, 447
Mazzali P. A., et al., 2002, *ApJ*, **572**, L61
Mazzali P. A., Walker E. S., Pian E., Tanaka M., Corsi A., Hattori T., Gal-Yam A., 2013, *MNRAS*, **432**, 2463
Mazzali P. A., Sullivan M., Pian E., Greiner J., Kann D. A., 2016, *MNRAS*, **458**, 3455
Mazzali P. A., Sauer D. N., Pian E., Deng J., Prentice S., Ben Ami S., Taubenberger S., Nomoto K., 2017, *MNRAS*, **469**, 2498
Meisner A. M., Lang D., Schlegel D. J., 2017, *AJ*, **153**, 38
Modjaz M., Gutiérrez C. P., Arcavi I., 2019, *Nature Astronomy*, **3**, 717
Moriya T. J., Liu Z.-W., Mackey J., Chen T.-W., Langer N., 2015, *A&A*, **584**, L5
Müller B., 2015, *MNRAS*, **453**, 287
Nicholl M., et al., 2015, *MNRAS*, **452**, 3869
Nicholl M., et al., 2016a, *ApJ*, **826**, 39
Nicholl M., et al., 2016b, *ApJ*, **828**, L18
Nicholl M., Berger E., Blanchard P. K., Gomez S., Chornock R., 2019, *ApJ*, **871**, 102
Nomoto K., Yamaoka H., Pols O. R., van den Heuvel E. P. J., Iwamoto K., Kumagai S., Shigeyama T., 1994, *Nature*, **371**, 227
Nyholm A., et al., 2020, *A&A*, **637**, A73
Pastorello A., et al., 2010, *ApJ*, **724**, L16
Pauldrach A. W. A., Duschinger M., Mazzali P. A., Puls J., Lennon M., Müller D. L., 1996, *A&A*, **312**, 525
Perley D. A., et al., 2016, *ApJ*, **830**, 13
Pian E., et al., 2020, *MNRAS*, **497**, 3542
Piascik A. S., Steele I. A., Bates S. D., Mottram C. J., Smith R. J., Barnsley R. M., Bolton B., 2014, in Ramsay S. K., McLean I. S., Takami H., eds, Society of Photo-Optical Instrumentation Engineers (SPIE) Conference Series Vol. 9147, Ground-based and Airborne Instrumentation for Astronomy V. p. 91478H, doi:10.1117/12.2055117
Poznanski D., Prochaska J. X., Bloom J. S., 2012, *MNRAS*, **426**, 1465
Prentice S. J., Mazzali P. A., 2017, *MNRAS*, **469**, 2672
Prentice S. J., et al., 2016, *MNRAS*, **458**, 2973
Prentice S. J., Maguire K., Skillen K., Magee M. R., Clark P., 2019a, Transient Name Server AstroNote, **74**, 1
Prentice S. J., et al., 2019b, *MNRAS*, **485**, 1559
Prentice S. J., Maguire K., Skillen K., Magee M. R., Clark P., 2019c, Transient Name Server Discovery Report, **2019-2335**, 1
Prentice S. J., Maguire K., Skillen K., Magee M. R., Clark P., 2019d, Transient Name Server Classification Report, **2019-2339**, 1
Prentice S. J., Maguire K., Skillen K., Magee M. R., Clark P., 2019e, Transient Name Server Classification Report, **2019-625**, 1
Quimby R. M., et al., 2011, *Nature*, **474**, 487
Quimby R. M., Yuan F., Akerlof C., Wheeler J. C., 2013, *MNRAS*, **431**, 912
Quimby R. M., et al., 2018, *The Astrophysical Journal*, **855**, 2
Roming P. W. A., et al., 2005, *Space Sci. Rev.*, **120**, 95
Roy R., et al., 2016, *A&A*, **596**, A67
Sauer D. N., Mazzali P. A., Deng J., Valenti S., Nomoto K., Filippenko A. V., 2006, *MNRAS*, **369**, 1939
Schlafly E. F., Finkbeiner D. P., 2011, *ApJ*, **737**, 103
Schulze S., et al., 2018, *MNRAS*, **473**, 1258
Schulze S., et al., 2020a, arXiv e-prints, p. arXiv:2008.05988
Schulze S., et al., 2020b, arXiv e-prints, p. arXiv:2008.05988
Shivvers I., et al., 2019, *MNRAS*, **482**, 1545
Skrutskie M. F., et al., 2006, *AJ*, **131**, 1163
Smartt S. J., et al., 2015, *A&A*, **579**, A40
Smith N., McCray R., 2007, *ApJ*, **671**, L17

Table A1. The properties of SN 2019yz

SN	z	μ [mag]	$E(B - V)_{\text{MW}}$ [mag]	$E(B - V)_{\text{host}}$ [mag]
2019yz	0.006	32.3	0.1	0.2±0.1

Smith N., Mauerhan J. C., Silverman J. M., Ganeshalingam M., Filippenko A. V., Cenko S. B., Clubb K. I., Kandrashoff M. T., 2012, *MNRAS*, **426**, 1905
Steele I. A., et al., 2004, in Jacobus M. Oschmann J., ed., Ground-based Telescopes. SPIE, doi:10.1117/12.551456, https://doi.org/10.1117/2F12.551456
Stehle M., Mazzali P. A., Benetti S., Hillebrandt W., 2005, *MNRAS*, **360**, 1231
Stritzinger M., Leibundgut B., 2005, *A&A*, **431**, 423
Stritzinger M. D., et al., 2018, *A&A*, **609**, A135
Suzuki A., Maeda K., 2019, *ApJ*, **880**, 150
Suzuki A., Maeda K., 2021, *ApJ*, **908**, 217
Taddia F., et al., 2018, *A&A*, **609**, A136
Taubenberger S., et al., 2009, *MNRAS*, **397**, 677
Teffs J. J., Prentice S. J., Mazzali P. A., Ashall C., 2021, *MNRAS*, **502**, 3829
Valenti S., et al., 2011, *MNRAS*, **416**, 3138
Valenti S., et al., 2012, *ApJ*, **749**, L28
Wiseman P., et al., 2020, *MNRAS*, **495**, 4040
Wright E. L., et al., 2010, *AJ*, **140**, 1868
Wright A. H., et al., 2016, *MNRAS*, **460**, 765
Yan L., et al., 2020, *ApJ*, **902**, L8

APPENDIX A: SN 2019YZ

SN 2019yz is a spectroscopically and photometrically normal Type Ic-7, and is provided here as a comparison object. We present a quick summary of the properties of this transient in Table A1. The distance modulus is a Tully-Fisher measurement, while $E(B - V)_{\text{MW}}$ is from Schlafly & Finkbeiner (2011). The host extinction is estimated by fitting two Gaussian profiles to the host Na I D absorption lines and applying the relationship between the pseudo-equivalent width and reddening from Poznanski et al. (2012). The data for this object will be made public along with the SNe featured in this work.

This paper has been typeset from a $\text{\TeX}/\text{\LaTeX}$ file prepared by the author.