

Occupational causes of hypersensitivity pneumonitis

Kongsupon, N; Walters, G I; Sadhra, S S

DOI:

[10.1093/occmed/kqab082](https://doi.org/10.1093/occmed/kqab082)

License:

Creative Commons: Attribution (CC BY)

Document Version

Publisher's PDF, also known as Version of record

Citation for published version (Harvard):

Kongsupon, N, Walters, GI & Sadhra, SS 2021, 'Occupational causes of hypersensitivity pneumonitis: a systematic review and compendium', *Occupational Medicine*, vol. 71, no. 6-7, pp. 255-259.
<https://doi.org/10.1093/occmed/kqab082>

[Link to publication on Research at Birmingham portal](#)

General rights

Unless a licence is specified above, all rights (including copyright and moral rights) in this document are retained by the authors and/or the copyright holders. The express permission of the copyright holder must be obtained for any use of this material other than for purposes permitted by law.

- Users may freely distribute the URL that is used to identify this publication.
- Users may download and/or print one copy of the publication from the University of Birmingham research portal for the purpose of private study or non-commercial research.
- User may use extracts from the document in line with the concept of 'fair dealing' under the Copyright, Designs and Patents Act 1988 (?)
- Users may not further distribute the material nor use it for the purposes of commercial gain.

Where a licence is displayed above, please note the terms and conditions of the licence govern your use of this document.

When citing, please reference the published version.

Take down policy

While the University of Birmingham exercises care and attention in making items available there are rare occasions when an item has been uploaded in error or has been deemed to be commercially or otherwise sensitive.

If you believe that this is the case for this document, please contact UBIRA@lists.bham.ac.uk providing details and we will remove access to the work immediately and investigate.

Occupational causes of hypersensitivity pneumonitis: a systematic review and compendium

N. Kongsupon¹, G. I. Walters^{1,2} and S. S. Sadhra¹

¹Institute of Occupational and Environmental Medicine, College of Medical and Dental Sciences, University of Birmingham, Birmingham B152TT, UK, ²Birmingham NHS Regional Occupational Lung Disease Service, Birmingham Chest Clinic, 151 Great Charles Street, Birmingham B3 3HX, UK.

Correspondence to: N. Kongsupon, Institute of Applied Health Research, College of Medical and Dental Sciences, University of Birmingham, Birmingham B152TT, UK. E-mail: nxk798@student.bham.ac.uk

Background	Hypersensitivity pneumonitis (HP) is caused by a variety of antigens and low-molecular-weight chemicals, often through occupational exposure. Making a diagnosis of HP and identifying a cause are challenging. Cryptogenic cases are frequently reported, and missing or incomplete exposure histories can cause misclassification.
Aims	To provide an evidence-based compendium of sources of exposure and causes of HP for the clinician, through systematic review of medical literature.
Methods	Articles related to HP causative agents and occupational exposure were searched from the databases OVID Medline (1946 to October 2020) and EMBASE (1974 to October 2020). Abstracts and full texts of articles were screened by two reviewers. Data on causative antigens, occupational source of exposure and any associated eponymous name were extracted and grouped according to source of exposure.
Results	A total of 1790 articles were identified, from which 305 articles met the inclusion criteria. An additional 22 articles were identified from citation lists of the selected review articles. Sources of exposure identified for HP were sorted into 14 categories of work (agricultural, plant matter processing, wood, animal-related, foodstuff, food processing, metal processing, polymers, other manufacturing, chemicals, aerosolized water, service, waste and sewage and wind instruments).
Conclusions	This work is a comprehensive list of occupational causative agents and exposures causing HP. Cases are grouped by source of exposure, allowing an immediately accessible compendium of causes for use during occupational exposure assessment, which could also form the basis for a clinical questionnaire.
Key words	Aetiology; extrinsic allergic alveolitis; occupational disease; occupational exposure; occupational health.

Introduction

Hypersensitivity pneumonitis (HP) is an inflammatory response occurring in the alveoli and bronchi following exposure to an inhaled organic antigen or low-molecular-weight agent. Pepys and Jenkins [1] first demonstrated precipitating antibodies to mouldy hay in farmers in the 1960s. Since then, many antigens and exposures have been identified as causes, from case reports, series and surveillance reports; these have given rise to labels based

on occupation, such as cheese washers' or mushroom workers' lung. In the UK, the most frequently reported causative exposure from occupational health surveillance is now metalworking fluid, having replaced farmers' lung over the last two decades [2].

Diagnosis of HP is based on exposure history, computerized tomographic appearance, bronchiolo-alveolar differential cell count, with or without histology, and demonstration of sensitization to a known antigen, by specific immunoglobulin G or precipitating antibodies.

Key learning points

What is already known about this subject:

- Hypersensitivity pneumonitis is caused by a variety of inhaled antigens and haptens, often through occupational exposures.
- Identifying the causative antigen and a relevant source of exposure is one of the most important factors in making an accurate diagnosis of hypersensitivity pneumonitis and for prognosis.
- Cryptogenic hypersensitivity pneumonitis is often reported, and missing or incomplete exposure histories can cause misclassification of the disease.

What this study adds:

- This is a compendium of occupational causes and sources of exposure for hypersensitivity pneumonitis, derived by systematic review of the medical literature.

What impact this may have on practice or policy:

- A compendium of cases of hypersensitivity pneumonitis sorted by industry, work process or substance used may provide a reference for the practising clinician during occupational exposure assessment.
- This could form the basis for an exposure assessment questionnaire, where the cause for hypersensitivity pneumonitis is not clear.

Diagnosis of HP can be difficult since radiological appearance is not specific to the disease, exposure to a known cause is not always apparent and specific sensitization can occur in the absence of lung disease. A recent Delphi study [3] among an international group of experts identified the most important discriminatory features in making a diagnosis; these comprised exposure to a known antigen, a suitable temporal relationship between exposure and disease, and improvement on avoidance of antigen exposure. However, 'cryptogenic' HP is frequently reported and exposure histories are often missing or incomplete [4–7]. In acute HP, antigen avoidance leads to better outcomes, though this is not necessarily the case for more fibrotic HP, where the natural history varies in response to antigen exposure, and the role of historical exposures is unclear [8, 9]. We aim to produce a comprehensive list of causative agents derived from occupational exposures for HP by systematic review of published medical literature.

Methods

A systematic evidence review was conducted by searching the databases OVID Medline (1946 until October 2020) and EMBASE (1974 until October 2020). A flow diagram is shown in Figure 1. The following search terms were used with no limits or filters: 'hypersensitivity pneumonitis OR extrinsic allergic alveolitis OR allergic alveolitis) AND (occupation OR occupational OR work-related)'. Search results were imported to EndNote software and duplicates were removed and then exported to a Microsoft Excel spreadsheet for the study selection process. Two reviewers (N.K. and S.S.S.) individually screened the titles and abstracts; full-text articles were reviewed when abstracts were not present or available. Articles were eligible if they met the following criteria: (i)

included individuals who were diagnosed with HP, (ii) causative exposures were occupational in origin and (iii) abstracts were written in English.

Eligible articles were categorized as conference abstracts, foreign language articles with English abstracts, case reports and series, surveillance reports, cross-sectional studies, cohort studies and review articles (narrative or systematic). The citation lists of included review articles were screened for additional causative agents and exposures. For each included article (authors, year, journal, study design), data on causative antigen or hapten, occupational source of exposure (work process, industry, substance encountered) and any given name for the disease were extracted by N.K.; antigens and haptens were grouped according to source of exposure. As a measure of quality control, included articles were categorized into peer and non-peer reviewed. 'Peer reviewed' was defined as: identified in 'Web of Science Core Collection' database (Clarivate Analytics, Philadelphia, PA, USA) or assigned as 'refereed' in 'Ulrichsweb' database (ProQuest, Ann Arbor, MI, USA). 'Non-peer reviewed' was defined as either not listed in the two databases above, or a conference abstract. Ethical review was not sought for this literature review, since the study did not involve NHS patients or workers.

Results

The database search identified 1790 articles. After removing the duplicates and irrelevant articles, 305 articles were eligible for the study; 22 additional articles were included from citation lists of review articles (Figure 1). Sources of exposure were sorted into 14 categories (see Table 1, available as Supplementary data at *Occupational Medicine* Online). There were 158 different antigens or haptens, and 125 occupational sources of HP identified

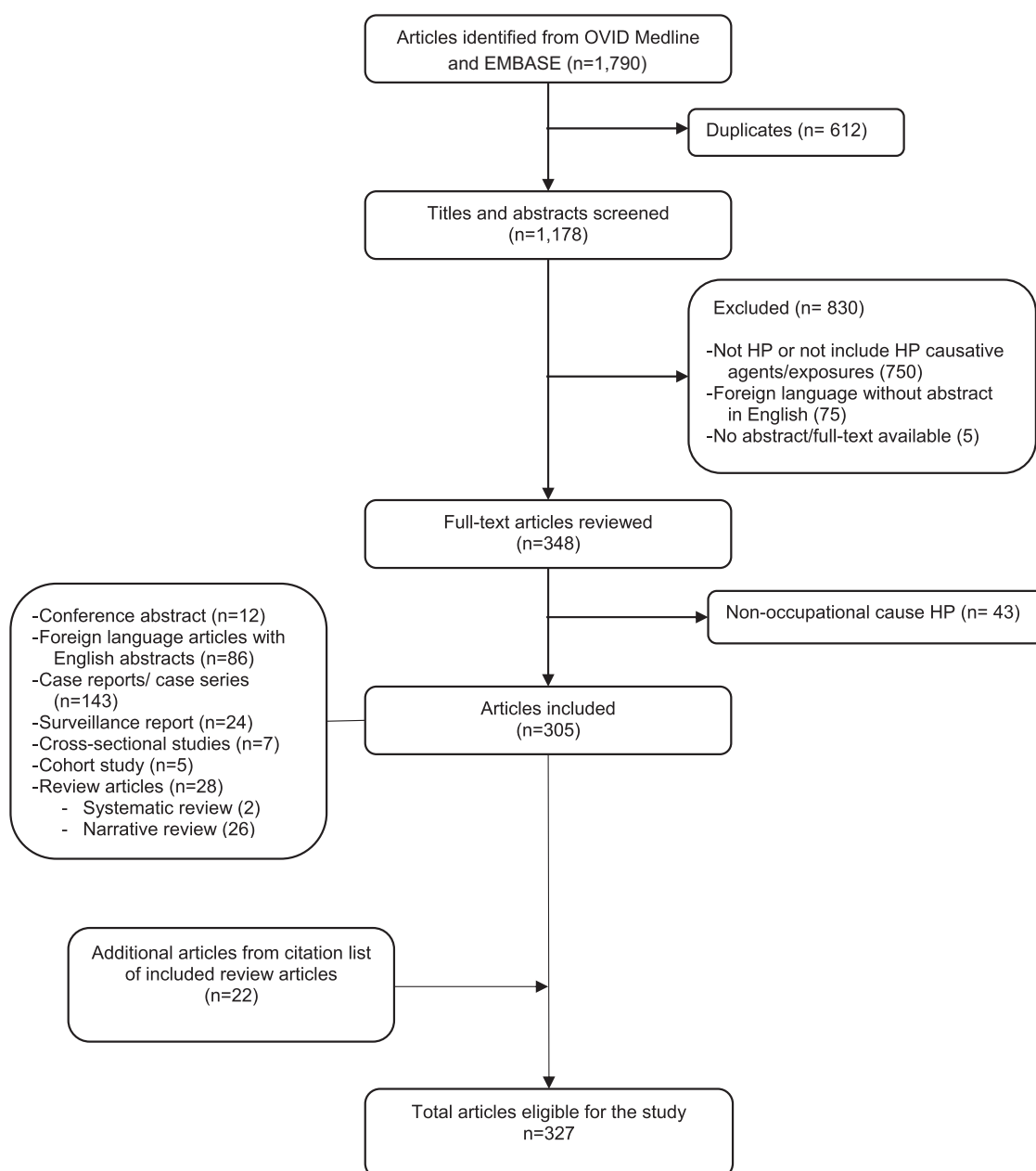


Figure 1. PRISMA diagram for systematic review of occupational causative agents implicated in diagnoses of HP [10].

from the review; out of these, 17 antigens or haptens and 9 occupational sources were evidenced by non-peer-reviewed references. For 17 exposures, causative antigens or haptens remained unidentified or were not reported in the articles. Five sources were inferred from review articles as original articles were unavailable. Citations for all included articles are listed in [Supplementary File](#) (available as Supplementary data at *Occupational Medicine Online*).

Discussion

We have undertaken a systematic review of the medical literature, which, in summary, has found 305 eligible

articles and additional 22 articles from citation lists of the review articles. We have identified 158 antigens or haptens and 125 occupational sources which were grouped into 14 categories. A handful of occupational sources were derived from non-peer-reviewed articles. This is a comprehensive list of reported occupational causative agents and exposures for HP. Evidence is based largely on case series and reports, with a small number of cross-sectional or cohort studies. Causes are grouped by source of exposure (industry, work process or substances encountered) rather than a specific antigen or hapten, which is likely to be of benefit to the practising clinician searching for an identifiable cause for HP in their worker or patient. This is an arbitrary categorization,

derived iteratively from examining previous reports, and not based on molecular structure or reactivity, so not intended to specifically evaluate the causal relationship.

There are several other limitations to this study. Firstly, the case definition for HP has not been pre-determined and assessed in each study. This is because HP diagnosis may be complex, due to non-specific clinical manifestations that mimic other interstitial lung diseases, variable natural history, variable radiological appearance and lack of universal diagnostic criteria. Secondly, the level of evidence is generally low with predominance of case reports and series, and there has been no individual assessment of quality of included clinical studies; rating was based upon whether an article had been peer reviewed or not.

However, the available information from many national registries shows that HP incidence is rare, making reports of individual cases and exposures important, and so a low threshold for inclusion was pre-established. In the UK general population, about nine cases per million person-years is an estimated incidence from a primary care database [11], while the number is reduced to one to two cases per million workers from the national voluntary reporting scheme by occupational and respiratory specialists [2]. In Europe, the incidence ranges from 0.35 to 12.2 cases per million workers; in high-risk occupations, HP cases could be as high as 10–13% (e.g. farmers, pigeon breeders) [12]. These numbers are in fact derived from different baseline populations (insurance-/health service-/workplace-based), reporting systems (voluntary/obligatory) and most importantly different diagnostic criteria; many HP cases are still under- or misdiagnosed.

To make an accurate diagnosis of HP and identify the cause, thorough occupational and environmental histories are essential; exposure enquiries are likely to be limited by individual prior clinical experience in the absence of a standardized assessment tool. Furthermore, in a large HP case series derived from interstitial lung disease multidisciplinary team discussion and consensus, exposure histories of patients with cryptogenic HP were missing in 20–30% [4]. Morell *et al.* [13] reported that 40% of patients who had a primary diagnosis of idiopathic pulmonary fibrosis were subsequently diagnosed with HP, following identification of occult exposures to feather bedding. Therefore, there is a good argument for further research to validate and examine the effectiveness of a systematically derived exposure questionnaire.

The difficulty here is, as this compendium demonstrates, that the number of causes and exposures is large and various, and would make a questionnaire cumbersome. Barnes *et al.* [14] have identified a small number of causative exposures (18) suitable for screening questionnaire, by systematic review of medical literature (exposures were included if reported in five or more cases), then studied by Delphi to determine their importance among experts. However, the sensitivity and specificity of this tool have not been established. As a rare disease

with many and various causes, a compendium is a useful tool, particularly in the setting of occupational HP, where an occupational cause is likely if working-age patients present with work-related symptoms of acute or sub-acute duration [4].

Funding

There was no funding for this study.

Competing interests

None declared.

References

1. Pepys J, Jenkins PA. Precipitin (F.L.H.) test in farmer's lung. *Thorax* 1965;**20**:21–35.
2. Barber CM, Wiggans RE, Carder M, Agius R. Epidemiology of occupational hypersensitivity pneumonitis; reports from the SWORD scheme in the UK from 1996 to 2015. *Occup Environ Med* 2017;**74**:528–530.
3. Morisset J, Johannson KA, Jones KD *et al.*; HP Delphi Collaborators. Identification of diagnostic criteria for chronic hypersensitivity pneumonitis: an international modified Delphi survey. *Am J Respir Crit Care Med* 2018;**197**:1036–1044.
4. Walters GI, Mokhlis JM, Moore VC *et al.* Characteristics of hypersensitivity pneumonitis diagnosed by interstitial and occupational lung disease multi-disciplinary team consensus. *Respir Med* 2019;**155**:19–25.
5. Hanak V, Golbin JM, Ryu JH. Causes and presenting features in 85 consecutive patients with hypersensitivity pneumonitis. *Mayo Clin Proc* 2007;**82**:812–816.
6. Fernández Pérez ER, Swigris JJ, Forssén AV *et al.* Identifying an inciting antigen is associated with improved survival in patients with chronic hypersensitivity pneumonitis. *Chest* 2013;**144**:1644–1651.
7. Xu JF, Shen L, Zhang Y, Zhang P, Qu JM, Li HP. Lung biopsy-proved hypersensitivity pneumonitis without known offending antigen: characteristics and follow-up. *Clin Respir J* 2014;**8**:297–304.
8. Zacharisen MC, Schlueter DP, Kurup VP, Fink JN. The long-term outcome in acute, subacute, and chronic forms of pigeon breeder's disease hypersensitivity pneumonitis. *Ann Allergy Asthma Immunol* 2002;**88**:175–182.
9. de Gracia J, Morell F, Bofill JM, Curull V, Orriols R. Time of exposure as a prognostic factor in avian hypersensitivity pneumonitis. *Respir Med* 1989;**83**:139–143.
10. Moher D, Liberati A, Tetzlaff J, Altman DG; PRISMA Group. Preferred reporting items for systematic reviews and meta-analyses: the PRISMA statement. *PLoS Med* 2009;**6**:e1000097.
11. Solaymani-Dodaran M, West J, Smith C, Hubbard R. Extrinsic allergic alveolitis: incidence and mortality in the general population. *QJM* 2007;**100**:233–237.
12. Quirce S, Vandenplas O, Campo P *et al.* Occupational hypersensitivity pneumonitis: an EAACI position paper. *Allergy* 2016;**71**:765–779.

13. Morell F, Villar A, Montero MÁ *et al.* Chronic hypersensitivity pneumonitis in patients diagnosed with idiopathic pulmonary fibrosis: a prospective case-cohort study. *Lancet Respir Med* 2013;**1**:685–694.
14. Barnes H, Morisset J, Molyneaux P, Westall G, Glaspole I, Collard HR; CHP Exposure Assessment Collaborators. A systematically derived exposure assessment instrument for chronic hypersensitivity pneumonitis. *Chest* 2020;**157**:1506–1512.

doi:10.1093/occmed/kqab051

The Post Covid-19 Pandemic Future of Work

The pandemic has brought many changes to working life with working from home a significant feature introduced at the behest of Government and employers. But with the introduction of vaccines and start of the relaxation of lockdown rules and restrictions thoughts are turning to how the 'new normal' of work will look.

Many commentators feel the 'new normal' will in fact be anything but normal for some workers and organizations. Many businesses have seen the financial benefits of the move from office to home working with reduction in the cost of travel and subsistence and the potential for savings on rents as working at home increases.

Workers have benefitted from reduced commuting time and the cost of lunch and coffees.

But there have been negative effects: organizations report a loss of creativity and innovation as people have not been in face-to-face contact. For workers the stress of commuting has, in some cases, been replaced by the stress of combining home and work life, of home schooling and of reduced social support networks.

So what will happen when workplaces open up?

What is certain is that there will be range of responses from delight to despair at the return to the 'new normal'.

Many employers say they are planning moving to hybrid working—a few days at home and a few days in the office to recapture that creativity and innovation that office presence brings and to once again provide a workplace social support network, which is especially important to workers who live alone.

But in the 'new world' there will be challenges.

Workforces are likely to consist of a mix of people—those who have been either partially or fully vaccinated, those who have yet to be vaccinated and those who will never be vaccinated either due to their refusal or rarely because vaccination is contraindicated. This issue is not going to go away as it is predicted we will all have to live with the virus and potentially with repeat vaccination, for years to come.

This may lead, in some instances and settings, into conflict. How will workers respond to each other? Will there be instances of workers refusing to work with unvaccinated colleagues, even in Covid-19 secure workplaces? Already employers both in and outside health and social care settings are changing contracts so that new employees are required to be vaccinated for the benefit of the business and of customers. But significant caution has been advised by lawyers about implementing strict requirements such as 'no jab no job' for existing staff.

With potential conflict comes the risk of accusations of direct and indirect discrimination, harassment and victimization under the Equality Act 2010. This can be avoided by occupational health professionals (OHPs) taking the lead in highlighting that action is needed now to prevent conflict later.

Every business, on opening up again, will need up-to-date risk assessments which have been refreshed in light of current knowledge. The planning of the physical return to the workplace and consistent messaging about the safety of the environment, the need for staff to maintain the Covid-secure workspace and the actions that should be taken if a worker becomes ill should all be crystal clear to both line managers and staff.

OHPs can support businesses by working with human resources colleagues to encourage the putting into place of policies and procedures that relate to Covid-19 including business expectations on how workers should act towards colleagues and by encouraging businesses to take proactive action to prevent ill-health such as allowing time off for vaccination and testing. Being accessible for expert medical advice to the Board and line managers, carrying out individual risk assessments for vulnerable and unvaccinated employees and working with communications colleagues to inform, persuade and influence can all demonstrate the value of occupational health.

Nerys Williams[®]

e-mail: neryswilliams1443@gmail.com