

DFT study of the structures and energetics of 98-atom AuPd clusters

Bruma, Alina; Ismail, Ramli; Oliver Paz-Borbón, L; Arslan, Haydar; Barcaro, Giovanni; Fortunelli, Alessandro; Li, Z Y; Johnston, Roy L

DOI:

[10.1039/c2nr32517a](https://doi.org/10.1039/c2nr32517a)

License:

None: All rights reserved

Document Version

Publisher's PDF, also known as Version of record

Citation for published version (Harvard):

Bruma, A, Ismail, R, Oliver Paz-Borbón, L, Arslan, H, Barcaro, G, Fortunelli, A, Li, ZY & Johnston, RL 2013, 'DFT study of the structures and energetics of 98-atom AuPd clusters', *Nanoscale*, vol. 5, no. 2, pp. 646-652. <https://doi.org/10.1039/c2nr32517a>

[Link to publication on Research at Birmingham portal](#)

Publisher Rights Statement:

Eligibility for repository : checked 28/02/2014

General rights

Unless a licence is specified above, all rights (including copyright and moral rights) in this document are retained by the authors and/or the copyright holders. The express permission of the copyright holder must be obtained for any use of this material other than for purposes permitted by law.

- Users may freely distribute the URL that is used to identify this publication.
- Users may download and/or print one copy of the publication from the University of Birmingham research portal for the purpose of private study or non-commercial research.
- User may use extracts from the document in line with the concept of 'fair dealing' under the Copyright, Designs and Patents Act 1988 (?)
- Users may not further distribute the material nor use it for the purposes of commercial gain.

Where a licence is displayed above, please note the terms and conditions of the licence govern your use of this document.

When citing, please reference the published version.

Take down policy

While the University of Birmingham exercises care and attention in making items available there are rare occasions when an item has been uploaded in error or has been deemed to be commercially or otherwise sensitive.

If you believe that this is the case for this document, please contact UBIRA@lists.bham.ac.uk providing details and we will remove access to the work immediately and investigate.

DFT study of the structures and energetics of 98-atom AuPd clusters†

Cite this: *Nanoscale*, 2013, 5, 646

Alina Bruma,^a Ramli Ismail,^{bc} L. Oliver Paz-Borbón,^{bd} Haydar Arslan,^e Giovanni Barcaro,^f Alessandro Fortunelli,^f Z. Y. Li^a and Roy L. Johnston^{*b}

The energetics, structures and segregation of 98-atom AuPd nanoclusters are investigated using a genetic algorithm global optimization technique with the Gupta empirical potential (comparing three different potential parameterisations) followed by local minimizations using Density Functional Theory (DFT) calculations. A shell optimization program algorithm is employed in order to study the energetics of the highly symmetric Leary Tetrahedron (LT) structure and optimization of the chemical ordering of a number of structural motifs is carried out using the Basin Hopping Monte Carlo approach. Although one of the empirical potentials is found to favour the LT structure, it is shown that Marks Decahedral and mixed FCC-HCP motifs are lowest in energy at the DFT level.

Received 30th August 2012
Accepted 20th November 2012

DOI: 10.1039/c2nr32517a

www.rsc.org/nanoscale

Introduction

Bimetallic nanoparticles (“nanoalloys”)¹ have received considerable attention for their unique properties, which are different from those of pure clusters^{2,3} especially in the domain of nanocatalysis.^{4–9} Gold–palladium (AuPd) nanoparticles are one of the most attractive systems because of their promising activity in catalysis.¹⁰ This superior performance has been widely attributed to electronic and/or geometric effects.^{11,12} Previous experimental studies have emphasized that it is possible to design various configurations of the same catalyst (*i.e.* alloy structure,¹³ Pd_{core}Au_{shell},¹⁴ Au_{core}Pd_{shell}¹⁵ or even 3 layer onion-like AuPd nanoparticles¹⁶) whereas theoretical studies¹⁷ have emphasized that a Pd_{core}Au_{shell} structure is favoured. From a theoretical point of view, empirical potentials (EP) have been widely employed for the determination of the structural and energetic configurations of nanoclusters in order to overcome the computational limitations imposed by more computationally expensive first principles approaches. The EP are suitable and versatile for modelling noble and quasi-noble

metals. However, as it is known that important modifications can be introduced by electronic effects,¹⁸ it is important to verify the predictions of the EP using first principles calculations. Density Functional Theory (DFT) is one of the most accurate methods for describing such effects. We have previously reported¹⁹ that a systematic search of the global minimum (GM) for 50-atom PdAu clusters is highly demanding for high level calculations because of the computational limitations in exploring vast areas of the configurational space. In the case of bimetallic clusters, it is generally accepted^{20,21} that the search is even more difficult due to the existence of homotops (isomers related by swapping the positions of one or more heterometallic pairs). In the present study, a hybrid approach has been adopted, based on a genetic algorithm (GA) for structural searching and Basin-Hopping Monte Carlo homotop searching²² at the EP level, followed by DFT local relaxation, to perform a thorough search of the configurational space for 98 atom AuPd nanoclusters. Three different parameterisations of the Gupta many-body empirical potential have been investigated and DFT local relaxations are performed for the putative global minimum (GM) structures identified for all parameter sets.

Fig. 1 shows a series of typical experimental images of AuPd nanoparticles obtained with a 200 kV Aberration-Corrected JEOL JEM2100F Scanning Transmission Electron Microscope (STEM) equipped with a High Angle Annular Dark Field (HAADF) detector. The images show AuPd nanoparticles deposited *via* physical vapour deposition onto amorphous carbon substrate and subsequently annealed *in situ* for 2 hours at 473 K. It can be seen that, for the same sample, a variety of sizes (from 1 to ~3 nm) and morphologies can be encountered, with chemical ordering ranging from alloy to Janus nanoparticles. However, although DFT calculations are limited to smaller sizes, these studies can be considered important

^aNanoscale Physics Research Laboratory, School of Physics and Astronomy, University of Birmingham, Edgbaston, Birmingham, B152TT, UK

^bSchool of Chemistry, University of Birmingham, Edgbaston, Birmingham, B152TT, UK. E-mail: r.l.johnston@bham.ac.uk

^cMax Planck Institute for Solid State Research, Heisenbergstrasse 1, D-70569 Stuttgart, Germany

^dCompetence Centre for Catalysis, Chalmers University of Technology, Gothenburg, SE-41296, Sweden

^eDepartment of Physics, Bulent Ecevit University, Zonguldak, 67100, Turkey

^fCNR-IPCF, Istituto per i Processi Chimico-Fisici del Consiglio Nazionale delle Ricerche, Via G. Moruzzi 1, 56124, Pisa, Italy

† Electronic supplementary information (ESI) available. See DOI: 10.1039/c2nr32517a

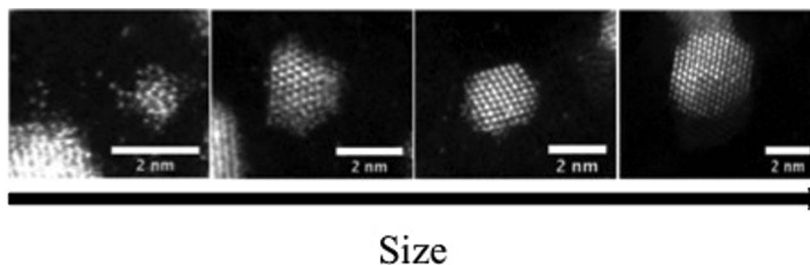


Fig. 1 Structural evolution with size of AuPd nanoparticles deposited *via* physical vapor deposition on amorphous carbon substrate and annealed at 473 K for 2 hours. Various morphologies of AuPd nanoparticles can be observed as size increases, from alloy to Janus structures.

starting points in understanding the metal–metal interactions in larger nanoparticles.

Computational details

The first step of this study involves the use of an empirical atomistic potential to allow a rapid search for the lowest energy isomers in configurational space. The Gupta potential has been used in order to model the interatomic interactions, with parameters chosen as described by Cleri and Rosato²³ and Ismail and Johnston.²⁴ The Gupta potential is based on the second moment approximation to tight-binding theory. The configurational energy of a cluster is written as the sum over all atoms of the many body attractive (V^m) and pair repulsive (V^r) energy components:

$$V_{\text{clus}} = \sum_{i=1}^N \left\{ V^r(i) - V^m(i) \right\} \quad (1)$$

where $V^r(i)$ and $V^m(i)$ are defined as:

$$V^r(i) = \sum_{j \neq i}^N A(\alpha, \beta) \exp \left\{ -p(\alpha, \beta) \left(\frac{r_{ij}}{r_0(\alpha, \beta)} - 1 \right) \right\} \quad (2)$$

$$V^m(i) = \left[\sum_{j \neq i}^N \xi^2(\alpha, \beta) \exp \left\{ -2q(\alpha, \beta) \left(\frac{r_{ij}}{r_0(\alpha, \beta)} - 1 \right) \right\} \right]^{1/2} \quad (3)$$

In eqn (1)–(3), the parameters α and β represent the atomic species of atoms i and j . Parameters A , r_0 , ξ , p and q are usually fitted to the experimental values of the cohesive energy, lattice parameters and independent elastic constants for the reference crystal structure of pure metals and bulk alloys at 0 K. The values of the Gupta potential parameters describing the Pd–Pd, Pd–Au and Au–Au interactions are described in Table 1 and are taken from ref. 23 and 24. Here, the three sets of parameters are described as: (a) ‘Average’: the heteronuclear Pd–Au parameters are obtained by averaging the pure Pd–Pd and Au–Au parameters; (b) ‘Exp-fit’: the Pd–Pd, Au–Au and Pd–Au parameters are fitted to the experimental properties of bulk Pd, Au and features of the bulk Pd–Au phase diagrams; (c) ‘DFT-fit’: the homo- and heteronuclear parameters were fitted to DFT calculations of solid phases.¹⁹

Global structural optimization has been performed using a GA, as encoded in the Birmingham Cluster Genetic Algorithm

(BCGA) program.²⁶ The GA parameters are: population size = 40; crossover rate = 0.8 (*i.e.* 32 offspring are produced per generation); crossover type = 1-point weighted (the splice position is calculated based on the fitness values of the parents); selection = roulette wheel; mutation rate = 0.1; mutation type = mutate_move; number of generations = 400; the number of GA runs for each composition is 100. This high number of GA runs is necessary due to the relatively large size of clusters and the presence of homotops.

For selected compositions, homotop optimization has been performed using the Basin Hopping Monte Carlo algorithm^{30,31} allowing only Pd–Au atom exchange moves,^{31–33} for a fixed structural configuration and composition. Typically, for each size and composition, a search of 50 000 steps at $k_B T = 0.05$ eV has been performed, followed by a final refinement of 20 000 steps at $k_B T = 0.01$ eV.

The 98-atom Leary Tetrahedron (LT) cluster is of interest as it has been discovered by Leary and Doye as the GM for the 98-atom Lennard-Jones cluster (LJ₉₈).³⁵ Furthermore, this structure has also been proposed as the lowest in energy for 98-atom silver clusters, described by the Sutton-Chen (SC) potential and for an aggregate of C₆₀ molecules.³⁶ Paz-Borbon *et al.* have established that the LT is the preferred structure over a wide compositional range for 98-atom Pd–Pt clusters at the Gupta potential level.²² A shell optimization program has been used to generate all possible high symmetry Leary Tetrahedron (LT) isomers, in order to assess how stable this structure is for 98-atom AuPd clusters. A substantial reduction in the search space is obtained if all sets of symmetry-equivalent atoms (*i.e.* ‘atomic shells’ or orbits of the T_d point group) in the LT structure are constrained to be of the same chemical species.³⁴ This reduces the number of inequivalent compositional and permutational isomers (homotops) to 2^S where S is the total number of atomic shells. The 98-atom LT has $S = 9$ shells (in order of increasing distance from the centre of the clusters these shells contain 4 : 12 : 12 : 12 : 4 : 6 : 12 : 12 : 24 atoms) resulting in a total of $2^9 = 512$ LT isomers.²²

DFT calculations were carried out using the Plane Wave Self Consistent Field (PWscf) code in Quantum Espresso (QE).²⁷ Calculations were made using the Perdew–Burke–Ernzerhof (PBE)²⁸ exchange–correlation functional and ultrasoft pseudo-potentials. Following convergence and accuracy tests, the following parameters have been selected: values of 40 and 160 Ry (1Ry = 13.606 eV) were used as the energy cut-off for the

Table 1 Comparison of the Average, DFT-fit and Exp-fit Gupta potential parameters

Parameter	Pd-Pd			Pd-Au			Au-Au		
	Average	DFT-fit	Exp-fit	Average	DFT-fit	Exp-fit	Average	DFT-fit	Exp-fit
A (eV)	0.1746	0.1653	0.171493044	0.19	0.1843	0.2764	0.2016	0.2019	0.209570656
ξ (eV)	1.718	1.6805	1.701873210	1.75	1.7867	2.082	1.79	1.8097	1.815276400
p	10.867	10.8535	11.000	10.54	10.5420	10.569	10.229	10.2437	10.139
q	3.742	3.7516	3.794	3.89	3.8826	3.913	4.036	4.0445	4.033
r_0	2.7485	2.7485	2.7485	2.816	2.8160	2.816	2.884	2.8840	2.884

selection of the plane-wave basis set for the description of the wave function and the electron density respectively. Eigenvalues and eigenstates of the Kohn–Sham Hamiltonian have been calculated at the Gamma point only of a cubic cell of side of approximately 20 Å, applying a Gaussian smearing technique with a broadening of the one-particle levels of 0.03 eV. The DFT local relaxations were performed by fully relaxing the coordinates of the metal atoms until the forces were smaller than 0.1 eV Å⁻¹.

Energetic analysis

The potential energy of a cluster calculated at the Gupta level, V_{clus} , can be written as:

$$V_{\text{clus}} = -NE_{\text{b}}^{\text{Gupta}} \quad (4)$$

where N is the total number of atoms in the cluster and $E_{\text{b}}^{\text{Gupta}}$ is the binding energy per atom of the cluster. For a fixed size of bimetallic clusters, the excess energy (mixing energy), Δ_N^{Gupta} calculated at the empirical level is a useful quantity, described as in eqn (5).²⁵

$$\Delta_N^{\text{Gupta}} = E_N^{\text{Gupta}}(\text{Pd}_m\text{Au}_n) - m \frac{E_N^{\text{Gupta}}(\text{Pd}_m)}{N} - n \frac{E_N^{\text{Gupta}}(\text{Au}_n)}{N} \quad (5)$$

here, $E_N^{\text{Gupta}}(\text{Pd}_m\text{Au}_n)$ represents the total energy of a given cluster calculated at the Gupta level and $E_N^{\text{Gupta}}(\text{Pd}_m)$ and $E_N^{\text{Gupta}}(\text{Au}_n)$ represent the total energies of the GM of the pure metal clusters.

The excess energy quantifies the energy of mixing (the energy associated with alloying) between two different metals. The most negative values of the excess energy indicate the presence of compositions for which mixing between the two metals is most favourable^{18,29} and thus more stable clusters. At the DFT level, the calculated total potential energy of a cluster is E_{clus} and the total energy of a single atom is E_{atom} (corresponding to the atom type present in the cluster, Pd or Au). The average binding energy of a pure N -atom cluster is:

$$E_{\text{b}} = E_{\text{atom}} - \frac{E_{\text{clus}}}{N} \quad (6)$$

The average binding energy of a bimetallic cluster is then given by:

$$E_{\text{b}}^{\text{DFT}} = -\frac{1}{N} [E_{\text{clus}} - mE_{\text{atom}}^{\text{Pd}} - nE_{\text{atom}}^{\text{Au}}] \quad (7)$$

where m , n , $E_{\text{atom}}^{\text{Pd}}$ and $E_{\text{atom}}^{\text{Au}}$ are the numbers of Pd and Au atoms in the cluster and the energies of a single atom of Pd and Au

respectively. $N = m + n$ represents the total number of atoms in a given cluster.

Results and discussions

The energetics of the 98-atom AuPd clusters have been investigated using a combination of BCGA and Basin Hopping Monte Carlo (BHMC) approaches for all the three Gupta potentials. First, the potential energy surface (PES) has been investigated using a GA search for all compositions, $\text{Pd}_m\text{Au}_{98-m}$; then the BHMC approach has been employed in order to optimize the chemical ordering corresponding to the structures located around the minima of the excess energy curves.

Gupta potential with DFT-fit parameters

In Fig. 2, the DFT-fit potential excess energy curve is shown in blue. The lowest values of the excess energy have been found in the compositional range $\text{Pd}_{39}\text{Au}_{59}$ – $\text{Pd}_{59}\text{Au}_{39}$, indicating that these are relatively stable structures. The vast majority of compositions in the range $\text{Pd}_{34}\text{Au}_{54}$ – $\text{Pd}_{74}\text{Au}_{42}$ are Marks Decahedron (M-Dh) structures (see Fig. 3 at Pd_{98}). Several other structural families such as Ino Decahedron (Ino-Dh) (e.g. $\text{Pd}_2\text{Au}_{96}$, $\text{Pd}_{14}\text{Au}_{84}$), incomplete icosahedron (In-Ico) (e.g. $\text{Pd}_{21}\text{Au}_{77}$), FCC (e.g. $\text{Pd}_1\text{Au}_{97}$) and FCC-HCP (e.g. $\text{Pd}_{93}\text{Au}_5$ and Au_{98}) with geometries exemplified in Fig. 3 can also be identified. The Ino-Dh clusters have been also reported for 98-atom Ni clusters modelled by the Sutton-Chen potential.³⁵ Other structures identified as a function of composition are described in detail in ESI S1.†

Gupta potential with Exp-fit parameters

The Exp-fit excess energy curve is shown in red in Fig. 2. For this choice of potential, in terms of structural variety, a structural

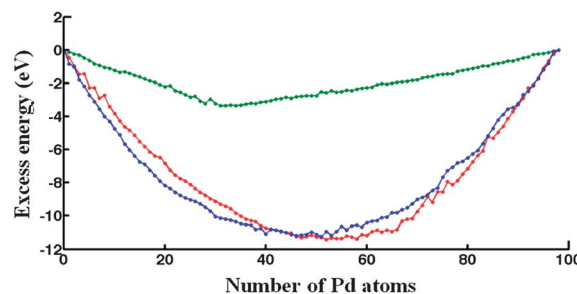


Fig. 2 Excess energy for 98-atom $\text{Pd}_m\text{Au}_{98-m}$ clusters determined for the: DFT fit (blue curve), Exp-fit (red curve) and Average (green curve) Gupta potentials.

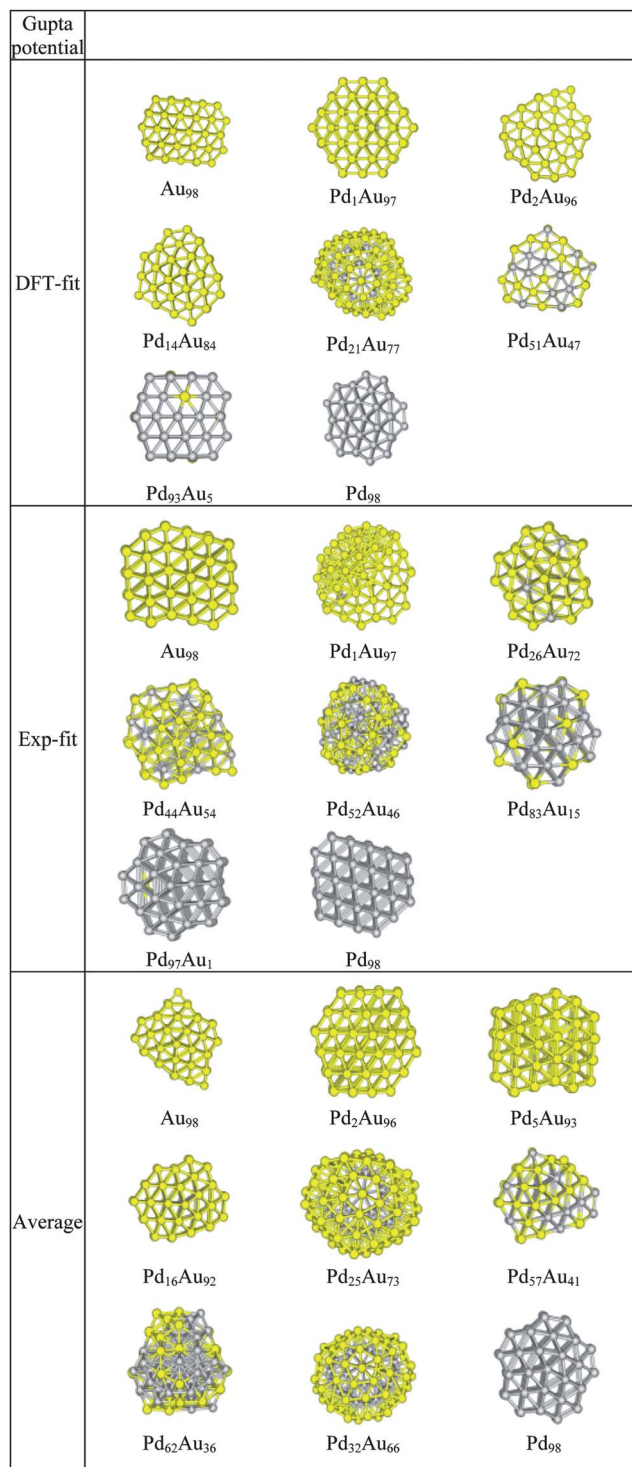


Fig. 3 Structural motifs found for selected Pd_mAu_{98-m} clusters using the three Gupta potentials.

transition from In-Ico to Ino-Dh or M-Dh appears on the left side of the minimum excess energy (*i.e.* biased towards pure Au), from $Pd_{47}Au_{51}$ to $Pd_{24}Au_{64}$ with exceptions including $Pd_{32}Au_{66}$ and $Pd_{45}Au_{53}$ (In-Ico) and $Pd_{37}Au_{61}$ with an FCC-HCP structure (see ESI S2†). The Au_{98} cluster has an FCC-HCP structure, whereas Pd_{98} is FCC-like. These structures are shown in Fig. 3 along with other interesting motifs.

Gupta potential with Average parameters

The excess energy for the Average potential is plotted in Fig. 2 (green curve). Compared with the other two potentials, the values of the excess energies are noticeably less negative and the shape of the curve is quite different. The minimum excess energy is found for $Pd_{32}Au_{66}$. This is an interesting structure, as the 32 Pd atoms sit in the centre of an In-Ico configuration, surrounded by a shell of Au atoms (Fig. 3). Also (see ESI S3†), we notice that Dh structures are predominantly encountered for Pd-rich compositions and there is a general trend of a transition to In-Ico and Dh clusters for Au-rich compositions. From a structural point of view, the pure Au_{98} cluster has a low symmetry Dh structure, whereas Pd_{98} has a M-Dh structure. As we increase the concentration of Au, the Au atoms tend to occupy surface sites forming patches distributed over the cluster surface. Another interesting cluster is $Pd_{62}Au_{36}$ which has a structure based on a fragment of the Leary Tetrahedron (Fig. 3).

It is interesting to note that both DFT-fit and Exp-fit Gupta potentials offered a larger degree of mixing between Pd and Au, than for the Average Gupta potential. This is confirmed by the quantification of the homonuclear and heteronuclear bonds, as shown in ESI S4.† As shown in Table 1, the Exp-fit potential has a pair (repulsive) energy scaling parameter (A) that is larger for Pd–Au than for either Pd–Pd or Au–Au. This has been shown to favour layer segregation in PdPt structures, in the paper of Massen *et al.*³⁷ However, this potential also has a larger value of the many-body energy scaling parameter, ξ , which is greatest for Pd–Au, favouring heteronuclear mixing.¹⁹ The value of the ξ parameter will eventually dominate overall, so the fitted potentials should favour more Pd–Au mixing.

Leary Tetrahedron (LT) clusters

Based on previous studies, the LT structure is difficult to find using the GA program – in the case of PdPt clusters, it is typically found about 1% of the time.²⁵ This is probably due to the existence of a narrower but deeper potential energy basin for the LT structures. The shell program constraints the structure to be LT (and in particular the high symmetry isomers and homotops) such that if the shell program finds (for a given composition) a LT isomer lower in energy than the structure found by

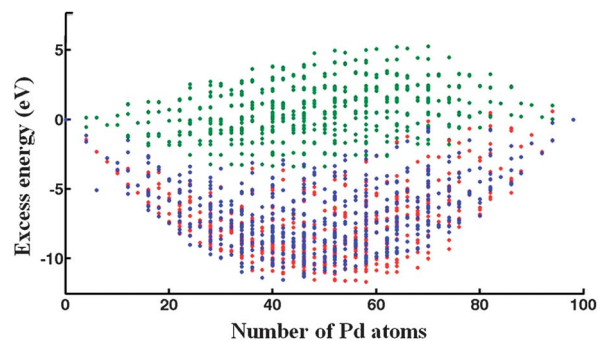


Fig. 4 Plot of the LT excess energy as a function of Pd content for high-symmetry 98-atom clusters modeled by the DFT-fit (blue dots), Exp-fit (red dots), Average (green dots) Gupta potentials.

the GA it shows that the GA obviously has not found the true GM. Possibly there could be a lower structure still – or even a lower symmetry LT – by exchanging positions of unlike atoms. This possibility has been tested using the BHMC technique, with exchange-only moves, as carried out for 98-atom Pd–Pt clusters.²⁵

The excess energy of LT clusters with respect to LT Au₉₈ and Pd₉₈ clusters are plotted in Fig. 4 as a function of Pd content for all three Gupta potentials. After optimization of the chemical ordering, the energies of the LT clusters are in close competition with those of other structural motifs; for example, when using the Average potential, the LT is found to be the lowest energy motif over a broad range, around the 50%/50% composition. Analysis of the LT structures with the lowest excess energies reveal that they possess segregated Pd_{core}Au_{shell} chemical ordering. Segregation of Au atoms to the surface can be rationalized in terms of the lower surface energy and cohesive energy of Au. The smaller atomic radius of Pd also favours Pd occupation of core sites.^{25,38}

DFT relaxation calculations and study of competition between different structural families

GM structures found at the EP level for compositions Pd₄₆Au₅₂–Pd₅₂Au₄₆ (*i.e.* in the region of the minima in the excess energy curves) were relaxed at the DFT level *before* the optimization of the chemical ordering with the BHMC code. The variation of excess energies as a function of number of Pd atoms, calculated at the DFT level (Δ_{98}^{DFT}), is shown in Fig. 5.

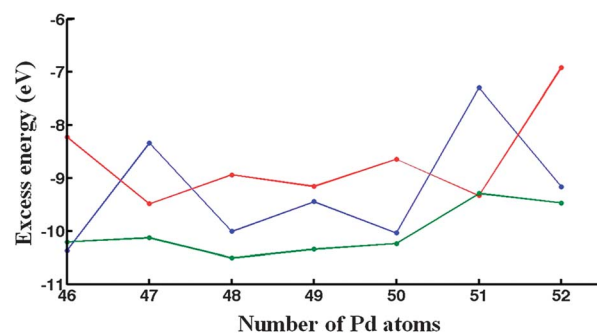


Fig. 5 DFT excess energies of the 'putative' GM for the DFT-fit (blue curve), Exp-fit (red curve) and Average (green curve) Gupta potentials, in the range Pd₄₆Au₅₂–Pd₅₂Au₄₆.

In contrast to the plots of $\Delta_{98}^{\text{Gupta}}$ shown in Fig. 2, which are quite smooth, the Δ_{98}^{DFT} plots are rather jagged, especially for the isomers produced by the DFT-fit and Exp-fit potentials. Fig. 5, shows that the Average potential leads to more negative excess energies at the DFT level for nearly all compositions compared to the DFT-fit and Exp-fit isomers (the exceptions are Pd₄₆Au₅₂, for which the DFT-fit isomer is lower, and Pd₅₁Au₄₇, for which the Exp-fit isomer is lower). As mentioned above, the Average potential stabilises Pd_{core}Au_{shell} homotops in contrast to the DFT-fit and Exp-fit, which prefer more mixed configurations. This is supported by the quantification of the homonuclear and heteronuclear bonds, as shown in ESI S4,† as well as the isomers shown in ESI S5.† It seem therefore that the Exp-fit and DFT-fit

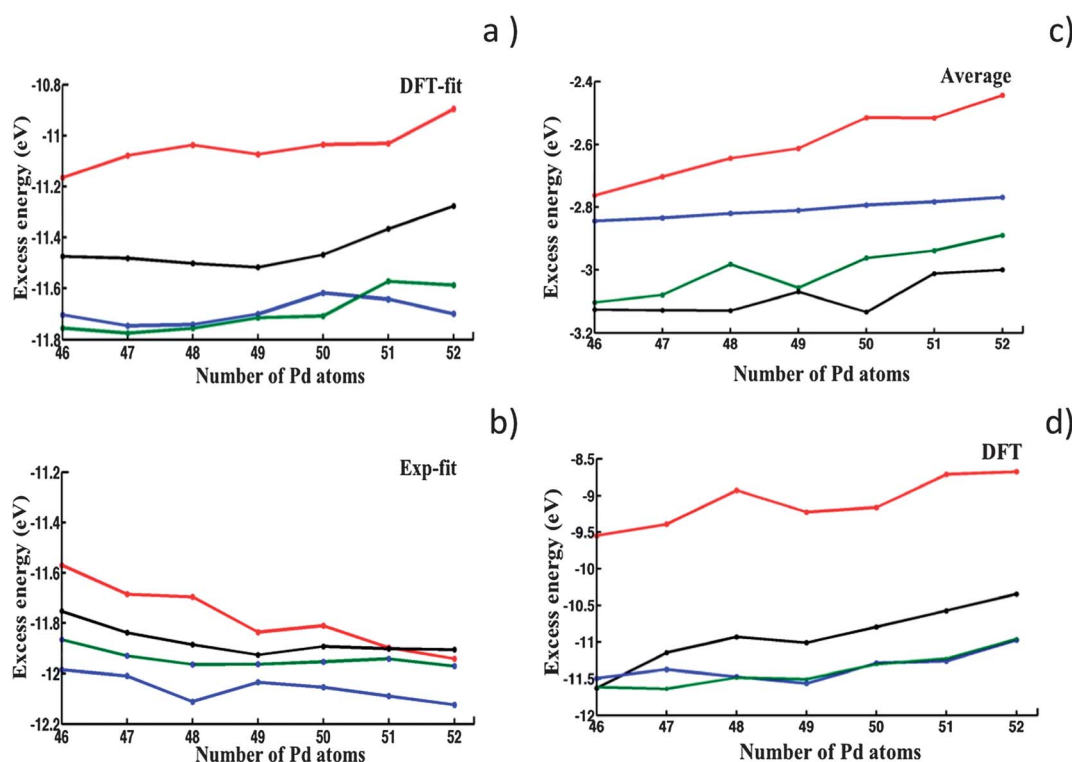


Fig. 6 Excess energy plots comparing LT (black), FCC-HCP (blue), M-Dh (green) and In-Ico (red) structural motifs in the range Pd₄₆Au₅₂–Pd₅₂Au₄₆. (a–c) Results of BHMC optimization of chemical ordering for: (a) DFT-fit; (b) Exp-fit; and (c) Average Gupta potentials. (d) Results of relaxation of Average potential isomers at the DFT level.

potentials overestimate the stability of mixed isomers relative to DFT calculations.

Fig. 6a–c shows the excess energies *after* optimization of chemical ordering for each of the three Gupta potentials, starting from the lowest-energy homotops of each structural motif found in the GA runs (FCC-HCP, M-Dh, In-Ico and LT). For compositions for which these structural motifs have not been found by GA and BH, these have been constructed, and subsequently subjected to BH atom-exchange in order to optimize the chemical ordering.

We have then performed DFT local relaxations on the optimized homotops obtained with the Average potential, with the DFT excess energies shown in Fig. 6d. This is justified because the Average potential was earlier shown to yield homotops with the lowest excess energy values after relaxation at the DFT level (Fig. 5).

In Fig. 6a and b it is interesting to note that, at the EP level, for the DFT-fit and Exp-fit potentials there is a close competition between the FCC-HCP and M-Dh motifs, which are significantly lower in energy than the LT motif by approximately 0.3 eV. The order is reversed for the Average potential (Fig. 6c), for which the LT isomers are competitive with M-Dh but are much lower in energy by 0.3 eV or more than FCC-HCP. All three potentials agree in predicting the In-Ico to lie higher in energy than the other three motifs (apart from the Exp-fit potential which finds In-Ico < LT for the composition Pd₅₂Au₄₆).

As shown in Fig. 6d, DFT relaxation of the structural motifs optimized for the Average potential (see also ESI S5[†]) leads to a change in the stability order, with the lowest excess energies now belonging (as for the DFT-fit and Exp-fit potentials) to the FCC-HCP and M-Dh motifs. It is clear that the LT is destabilised at the DFT level compared to the FCC-HCP and M-Dh structures, though it still lies considerably lower in energy than the In-Ico structures and is almost degenerate with the M-Dh (and lower than FCC-HCP) for Pd₄₆Au₅₂. This theoretical prediction can be directly linked to our experimental study of evaporated AuPd nanoparticles (Fig. 1), where structural motifs such as FCC are often encountered, whereas LT structures have not yet been observed for AuPd nanoparticles.

Conclusions

Three parameter sets (DFT-fit, Exp-fit and Average) have been compared for the Gupta potential in order to study the structures and energetics of 98-atom PdAu nanoclusters. An extensive search of the configurational space has been performed using a genetic algorithm in order to identify the global minimum for all three potentials, at the empirical potential level. It was found that the DFT-fit and Exp-fit potentials favour a higher degree of Pd–Au mixing compared to the Average potential, which favours core–shell configurations – which are in better agreement with DFT calculations. A shell optimization program has been employed to generate Leary Tetrahedron structures, which were found to be the most stable motif for the Average potential. However, Basin Hopping Monte Carlo optimization of the homotops of a number of low-energy structures, followed by DFT relaxation, reveal that the FCC-HCP and Marks Decahedron structural motifs are lower in energy than Leary

Tetrahedron and Icosahedron structures. These observations seem to be consistent with our experimental study of evaporated AuPd nanoparticles.

Acknowledgements

We acknowledge support from the Engineering and Physical Science Research Council (EPSRC), COST Action MP0903: “Nanoalloys as Advanced Materials-from Structure to Properties and Applications”, including COST STSM MP0903-240712-021238. The STEM used in this research was obtained through the Birmingham Science City project “Creating and Characterizing Next Generation Advanced Materials” supported by Advantage West Midlands (AWM) and partly funded by the European Regional Development Fund. Calculations have been performed on the University of Birmingham’s BlueBEAR high performance computer.³⁹ AB thanks Paul West for helpful discussions and valuable advice.

References

- 1 R. Ferrando, J. Jellinek and R. L. Johnston, *Chem. Rev.*, 2008, **168**, 845–910.
- 2 V. Ortalan, A. Uzun, B. C. Gates and N. Browning, *Nat. Nanotechnol.*, 2010, **5**, 843–847.
- 3 T. Shibata, B. A. Bunker, Z. Zhang, D. Meisel, C. F. Vardeman and J. D. Gezelter, *J. Am. Chem. Soc.*, 2002, **124**, 11989–11996.
- 4 J. Huang, T. Akita, J. Faye, T. Fujitani, T. Takei and M. Haruta, *Angew. Chem., Int. Ed.*, 2009, **48**, 7862–7866.
- 5 J. K. Edwards, *Science*, 2009, **323**, 1037–1041.
- 6 H. Zhang, T. Watanabe, M. Okumura, M. Haruta and N. Toshima, *Nat. Mater.*, 2012, **11**, 49–52.
- 7 A. Naitabi and B. R. Cuenya, *Appl. Phys. Lett.*, 2007, **91**, 113110.
- 8 J. Zhang, F. H. B. Lima, M. H. Shao, K. Sasaki, J. X. Wang, J. Hanson and R. R. Adzic, *J. Phys. Chem. B*, 2005, **109**, 22701–22704.
- 9 M. P. Humbert, L. E. Murillo and J. G. Chen, *ChemPhysChem*, 2008, **9**, 1262–1264.
- 10 M. S. Chen, D. Kumar, C. W. Yi and D. W. Goodman, *Science*, 2005, **310**, 291–293.
- 11 J. H. Sinfelt and G. D. Meitzner, *Acc. Chem. Res.*, 1993, **26**, 1–6.
- 12 B. R. Cuenya, *Thin Solid Films*, 2010, **518**, 3127–3150.
- 13 N. T. Tran, D. R. Powell and L. F. Dahl, *Dalton Trans.*, 2004, 217–223.
- 14 R. C. Tiruvalam, J. C. Pritchard, N. Dimitratos, J. A. Lopez-Sanchez, J. K. Edwards, A. F. Carley, G. J. Hutchins and C. J. Kiely, *Faraday Discuss.*, 2011, **152**, 63–86.
- 15 T. Akita, T. Hiroki, S. Tanaka, T. Kojima, M. Kohyama, A. Iwase and F. Hori, *Catal. Today*, 2008, **131**, 90–97.
- 16 D. Ferrer, D. A. Blom, L. F. Allard, S. Mejia, E. P. Tijerina and M. J. Yacaman, *J. Mater. Chem.*, 2008, **18**, 2242–2446.
- 17 L. O. Paz-Borbon, R. L. Johnston, G. Barcaro and A. Fortunelli, *J. Chem. Phys.*, 2008, **128**, 134517.
- 18 R. Ferrando, A. Fortunelli and G. Rossi, *Phys. Rev. B: Condens. Matter Mater. Phys.*, 2005, **72**, 085449.

- 19 F. Pittaway, L. O. Paz-Borbon, R. L. Johnston, H. Arslan, R. Ferrando, C. Mottet, G. Barcaro and A. Fortunelli, *J. Phys. Chem. C*, 2009, **113**, 9141–9152.
- 20 J. Jellinek and E. B. Krisinel, *Theory of Atomic and Molecular Clusters*, Springer, Berlin, 1999.
- 21 R. L. Johnston, *Atomic and Molecular Clusters*, Taylor and Francis, London, 2002.
- 22 L. O. Paz-Borbon, T. V. Mortimer-Jones, R. L. Johnston, A. Posada-Amarillas, G. Barcaro and A. Fortunelli, *Phys. Chem. Chem. Phys.*, 2007, **9**, 5202–5208.
- 23 F. Cleri and V. Rosato, *Phys. Rev. B: Condens. Matter Mater. Phys.*, 1993, **48**, 22–32.
- 24 R. Ismail and R. L. Johnston, *Phys. Chem. Chem. Phys.*, 2010, **12**, 8607–8619.
- 25 L. O. Paz-Borbon, R. L. Johnston, G. Barcaro and A. Fortunelli, *J. Phys. Chem. C*, 2007, **111**, 2936–2941.
- 26 R. L. Johnston, *Dalton Trans.*, 2003, 4193–4207.
- 27 P. Giannozzi, S. Baroni, N. Bonini, M. Calandra, R. Car, C. Cavazzoni, D. Ceresoli, G. L. Chiarotti, M. Cococcioni, I. Dabo, A. D. Corso, D. De Gironcoli, S. Fabris, G. Fratesi, R. Gebauer, U. Gerstmann, C. Gougoussis, A. Kokalj, M. Lazzeri, L. Martin-Samos, N. Marzari, F. Mauri, R. Mazzarello, S. Paolini, A. Pasquarello, L. Paulatto, C. Sbraccia, S. Scandolo, G. Sclauzero, A. P. Seitsonen, A. Smogunov, P. Umari and R. M. Wentzcovich, *J. Phys.: Condens. Matter*, 2009, **21**, 395502.
- 28 J. P. Perdew, K. Burke and M. Erzenhorf, *Phys. Rev. Lett.*, 1996, **77**, 3865.
- 29 A. Rapallo, G. Rossi, R. Ferrando, A. Fortunelli, B. C. Curley, L. D. Lloyd, G. M. Tarbuck and R. L. Johnston, *J. Chem. Phys.*, 2005, **122**, 194308.
- 30 J. Doye and D. Wales, *J. Phys. Chem. A*, 1997, **101**, 5111–5116.
- 31 G. Rossi and R. Ferrando, in *Nanomaterials: Design and Simulation*, ed. P. B. Balbuena and J. M. Seminario, Elsevier, Amsterdam, 2006.
- 32 G. Schmid, A. Lehnert, J. O. Malm and J. O. Bovin, *Angew. Chem., Int. Ed. Engl.*, 1991, **30**, 874–876.
- 33 A. F. Lee, C. J. Baddley, C. Hardacre, R. M. Orneord, R. M. Lambert, G. Schmid and H. West, *J. Phys. Chem.*, 1995, **99**, 6096.
- 34 G. Barcaro, A. Fortunelli, M. Polak and L. Rubinovich, *Nano Lett.*, 2011, **11**, 1766–1769.
- 35 R. H. Leary and J. P. K. Doye, *Phys. Rev. E: Stat. Phys., Plasmas, Fluids, Relat. Interdiscip. Top.*, 1999, **60**, R6320.
- 36 J. P. K. Doye, D. J. Wales, W. Branz and F. Calvo, *Phys. Rev. B: Condens. Matter Mater. Phys.*, 2001, **64**, 235409.
- 37 C. Massen, T. V. Mortimer-Jones and R. L. Johnston, *J. Chem. Soc., Dalton Trans.*, 2002, **23**, 4375–4388.
- 38 G. Rossi, R. Ferrando, A. Rapallo, A. Fortunelli, B. C. Curley, L. D. Lloyd and R. L. Johnston, *J. Phys. Chem.*, 2005, **122**, 194309.
- 39 <http://www.bluebear.bham.ac.uk>.