

Body mass index and diabetes risk in fifty-seven low- and middle-income countries

Teufel , Felix ; Seiglie , Jacqueline A. ; Geldsetzer, Pascal; Theilmann, Michaela; Marcus , Maja-Emilia ; Ebert, Cara; Lopez Arboleda , William Andres ; Agoudavi, Kokou; Andall-Brereton, Glennis; Aryal, Krishna K; Brian, Garry; Bovet, Pascal; Dorobantu, Maria; Singh Gurung, Mongal; Guwatudde, David; Houehanou, Corine; Houinato, Dismand; Jorgensen, Jutta Mari Adelin; Kagaruki, Gibson B; Karki, Khem B

DOI:

[10.1016/S0140-6736\(21\)00844-8](https://doi.org/10.1016/S0140-6736(21)00844-8)

License:

Creative Commons: Attribution-NonCommercial-NoDerivs (CC BY-NC-ND)

Document Version

Peer reviewed version

Citation for published version (Harvard):

Teufel , F, Seiglie , JA, Geldsetzer, P, Theilmann, M, Marcus , M-E, Ebert, C, Lopez Arboleda , WA, Agoudavi, K, Andall-Brereton, G, Aryal, KK, Brian, G, Bovet, P, Dorobantu, M, Singh Gurung, M, Guwatudde, D, Houehanou, C, Houinato, D, Jorgensen, JMA, Kagaruki, GB, Karki, KB, Labadarios, D, Martins, JS, Mayige, MT, McClure, RW, Mwangi, JK, Mwalim, O, Norov, B, Crooks , S, Farzadfar, F, Moghaddam, SS, Silver, BK, Sturua, L, Wesseh, CS, Stokes, A, Essien , UR, Neve , J-WDPG, Atun, R, Davies, J, Vollmer, S, Bärnighausen, TW, Ali, MK, Meigs , JB, Wexler , DJ & Manne-Goehler, J 2021, 'Body mass index and diabetes risk in fifty-seven low- and middle-income countries: a cross-sectional study of nationally representative individual-level data', *The Lancet*, vol. 398, no. 10296, pp. 238-248. [https://doi.org/10.1016/S0140-6736\(21\)00844-8](https://doi.org/10.1016/S0140-6736(21)00844-8)

[Link to publication on Research at Birmingham portal](#)

General rights

Unless a licence is specified above, all rights (including copyright and moral rights) in this document are retained by the authors and/or the copyright holders. The express permission of the copyright holder must be obtained for any use of this material other than for purposes permitted by law.

- Users may freely distribute the URL that is used to identify this publication.
- Users may download and/or print one copy of the publication from the University of Birmingham research portal for the purpose of private study or non-commercial research.
- User may use extracts from the document in line with the concept of 'fair dealing' under the Copyright, Designs and Patents Act 1988 (?)
- Users may not further distribute the material nor use it for the purposes of commercial gain.

Where a licence is displayed above, please note the terms and conditions of the licence govern your use of this document.

When citing, please reference the published version.

Take down policy

While the University of Birmingham exercises care and attention in making items available there are rare occasions when an item has been uploaded in error or has been deemed to be commercially or otherwise sensitive.

If you believe that this is the case for this document, please contact UBIRA@lists.bham.ac.uk providing details and we will remove access to the work immediately and investigate.

Figure 1. Geographic region-sex stratified generalized additive models of body mass index and diabetes in 57 low- and middle-income countries

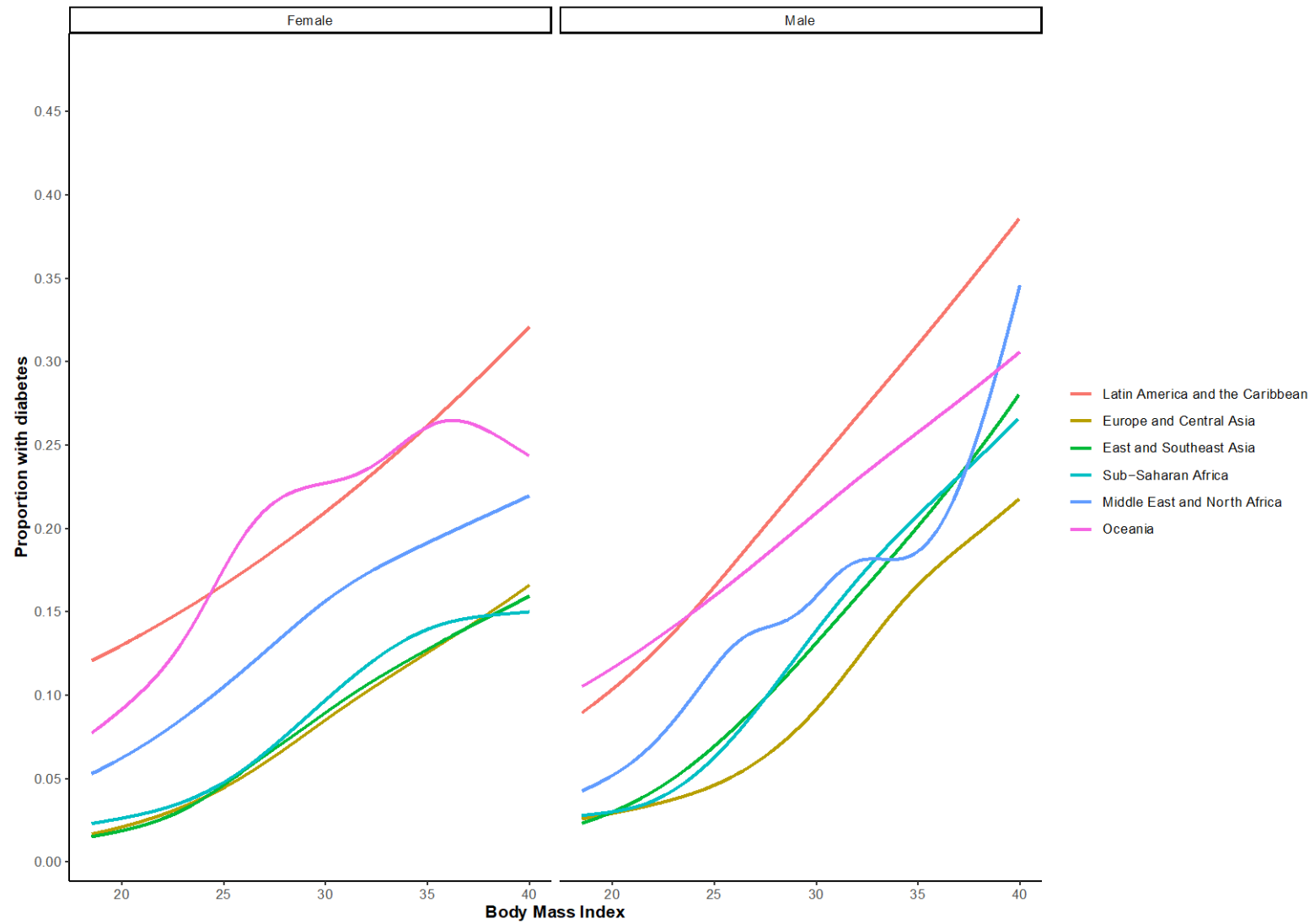


Figure 2. Geographic region-sex stratified risk ratios of body mass index categories and diabetes in 57 low- and middle-income countries

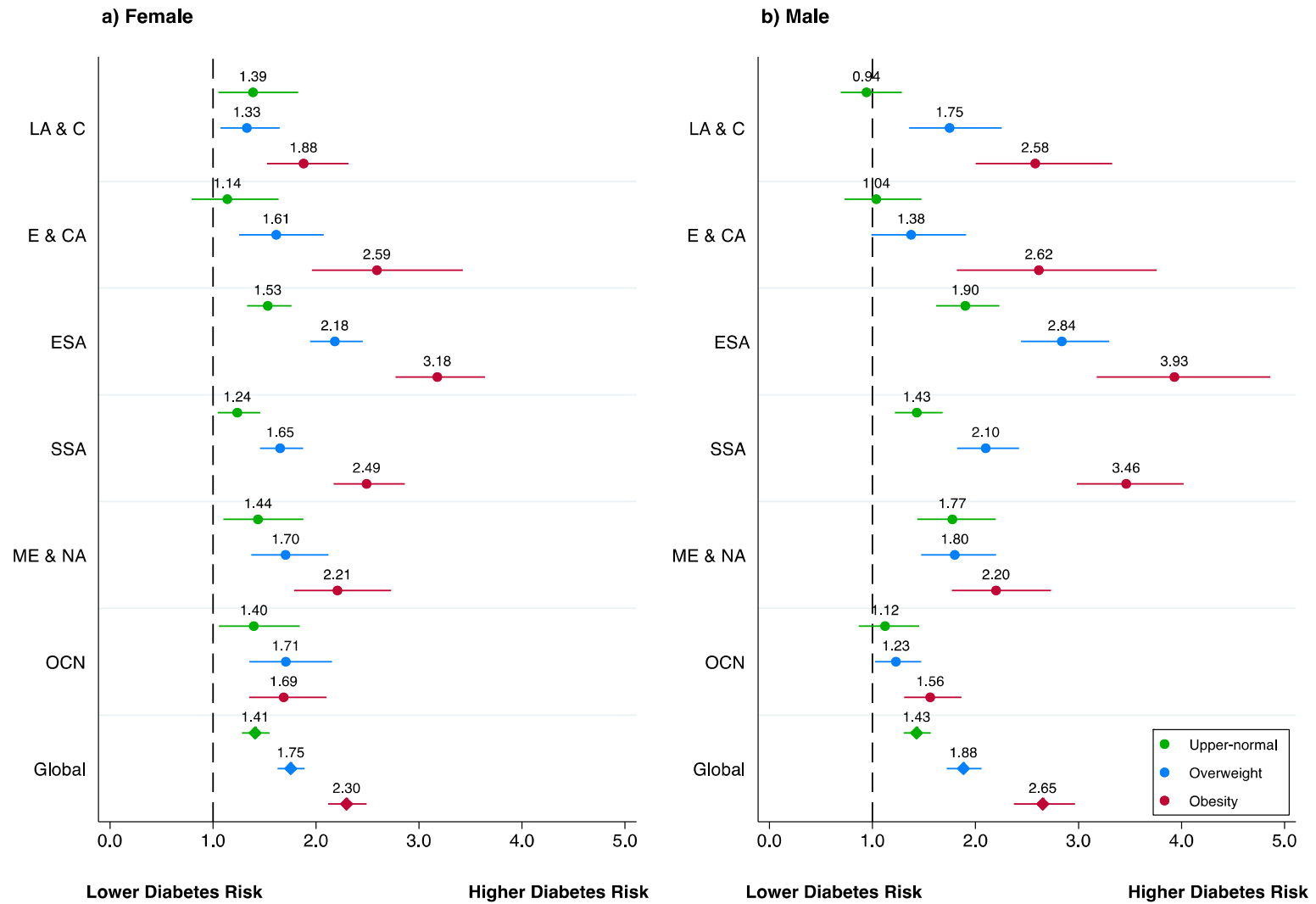


Figure 3. Geographic region-sex stratified ROC curves for body mass index and diabetes in 57 low- and middle-income countries

