

BamA and BamD are essential for the secretion of trimeric autotransporter adhesins

Rooke, Jessica L; Icke, Christopher; Wells, Timothy J; Rossiter, Amanda E; Browning, Douglas F; Morris, Faye C; Leo, Jack C; Schütz, Monika S; Autenrieth, Ingo B; Cunningham, Adam F; Linke, Dirk; Henderson, Ian R

DOI:

[10.3389/fmicb.2021.628879](https://doi.org/10.3389/fmicb.2021.628879)

License:

Creative Commons: Attribution (CC BY)

Document Version

Publisher's PDF, also known as Version of record

Citation for published version (Harvard):

Rooke, JL, Icke, C, Wells, TJ, Rossiter, AE, Browning, DF, Morris, FC, Leo, JC, Schütz, MS, Autenrieth, IB, Cunningham, AF, Linke, D & Henderson, IR 2021, 'BamA and BamD are essential for the secretion of trimeric autotransporter adhesins', *Frontiers in Microbiology*, vol. 12, 628879. <https://doi.org/10.3389/fmicb.2021.628879>

[Link to publication on Research at Birmingham portal](#)

General rights

Unless a licence is specified above, all rights (including copyright and moral rights) in this document are retained by the authors and/or the copyright holders. The express permission of the copyright holder must be obtained for any use of this material other than for purposes permitted by law.

- Users may freely distribute the URL that is used to identify this publication.
- Users may download and/or print one copy of the publication from the University of Birmingham research portal for the purpose of private study or non-commercial research.
- User may use extracts from the document in line with the concept of 'fair dealing' under the Copyright, Designs and Patents Act 1988 (?)
- Users may not further distribute the material nor use it for the purposes of commercial gain.

Where a licence is displayed above, please note the terms and conditions of the licence govern your use of this document.

When citing, please reference the published version.

Take down policy

While the University of Birmingham exercises care and attention in making items available there are rare occasions when an item has been uploaded in error or has been deemed to be commercially or otherwise sensitive.

If you believe that this is the case for this document, please contact UBIRA@lists.bham.ac.uk providing details and we will remove access to the work immediately and investigate.



BamA and BamD Are Essential for the Secretion of Trimeric Autotransporter Adhesins

Jessica L. Rooke^{1,2*}, Christopher Icke^{1,2}, Timothy J. Wells^{1,3}, Amanda E. Rossiter², Douglas F. Browning², Faye C. Morris², Jack C. Leo^{4,5}, Monika S. Schütz⁶, Ingo B. Autenrieth⁶, Adam F. Cunningham⁷, Dirk Linke⁵ and Ian R. Henderson^{1,2*}

¹ Institute for Molecular Bioscience, University of Queensland, St Lucia, QLD, Australia, ² Institute of Microbiology and Infection, University of Birmingham, Birmingham, United Kingdom, ³ The University of Queensland Diamantina Institute, The University of Queensland, Brisbane, QLD, Australia, ⁴ Department of Biosciences, Nottingham Trent University, Nottingham, United Kingdom, ⁵ Department of Biosciences, University of Oslo, Oslo, Norway, ⁶ Institut für Medizinische Mikrobiologie und Hygiene, Universitätsklinikum Tübingen, Tübingen, Germany, ⁷ Institute of Immunology and Immunotherapy, University of Birmingham, Birmingham, United Kingdom

OPEN ACCESS

Edited by:

Jai Justin Tree,
University of New South Wales,
Australia

Reviewed by:

Nicholas Noinaj,
Purdue University, United States
Angela Mitchell,
Texas A&M University, United States

*Correspondence:

Jessica L. Rooke
jessica.rooke@uq.edu.au
Ian R. Henderson
I.Henderson@uq.edu.au;
i.henderson@imb.uq.edu.au

Specialty section:

This article was submitted to
Microbial Physiology and Metabolism,
a section of the journal
Frontiers in Microbiology

Received: 13 November 2020

Accepted: 26 January 2021

Published: 23 February 2021

Citation:

Rooke JL, Icke C, Wells TJ, Rossiter AE, Browning DF, Morris FC, Leo JC, Schütz MS, Autenrieth IB, Cunningham AF, Linke D and Henderson IR (2021) BamA and BamD Are Essential for the Secretion of Trimeric Autotransporter Adhesins. *Front. Microbiol.* 12:628879. doi: 10.3389/fmicb.2021.628879

The BAM complex in *Escherichia coli* is composed of five proteins, BamA-E. BamA and BamD are essential for cell viability and are required for the assembly of β -barrel outer membrane proteins. Consequently, BamA and BamD are indispensable for secretion via the classical autotransporter pathway (Type 5a secretion). In contrast, BamB, BamC, and BamE are not required for the biogenesis of classical autotransporters. Recently, we demonstrated that TamA, a homologue of BamA, and its partner protein TamB, were required for efficient secretion of proteins via the classical autotransporter pathway. The trimeric autotransporters are a subset of the Type 5-secreted proteins. Unlike the classical autotransporters, they are composed of three identical polypeptide chains which must be assembled together to allow secretion of their cognate passenger domains. In contrast to the classical autotransporters, the role of the Bam and Tam complex components in the biogenesis of the trimeric autotransporters has not been investigated fully. Here, using the *Salmonella enterica* trimeric autotransporter SadA and the structurally similar YadA protein of *Yersinia* spp., we identify the importance of BamA and BamD in the biogenesis of the trimeric autotransporters and reveal that BamB, BamC, BamE, TamA and TamB are not required for secretion of functional passenger domain on the cell surface.

IMPORTANCE

The secretion of trimeric autotransporters (TAA's) has yet to be fully understood. Here we show that efficient secretion of TAAs requires the BamA and D proteins, but does not require BamB, C or E. In contrast to classical autotransporter secretion, neither trimeric autotransporter tested required TamA or B proteins to be functionally secreted.

Keywords: autotransporter, trimeric autotransporter adhesin, Bam complex, outer membrane assembly, protein secretion

INTRODUCTION

The Type 5 secretion system (T5SS) is the most abundant protein secretion system in Gram-negative bacteria (Henderson and Lam, 2001; Henderson et al., 2004; Desvaux et al., 2005). Recently, the T5SS has been divided into five sub categories; Type 5a (classical autotransporters), Type 5b (two-partner secretion), Type 5c [trimeric Autotransporter Adhesins (TAA)], Type 5d (fused two-partner) and Type 5e (inverted autotransporters) (Henderson et al., 2000; Tsai et al., 2010; Leo et al., 2012). All sub-classes of the T5SS have the following domains: a signal sequence, secreted passenger domain and a β -barrel translocation domain. However, the exact composition, order and size of these domains differ between sub-classes (Desvaux et al., 2004; Leo et al., 2012, 2014). In all instances, Type 5 member proteins are often associated with virulence functions, with Type 5c proteins having reported functions such as promoting host cell adherence, biofilm formation, autoaggregation and evasion of complement mediated killing (Leo et al., 2008; Raghunathan et al., 2011; Schindler et al., 2012).

Secretion via the T5SS has mostly been studied in the T5aSS. In this system, the autotransporter protein contains a signal sequence, a passenger domain, and a ca. 300 amino acid β -barrel translocation domain. The signal sequence directs translocation across the inner membrane via the SecYEG translocon (Desvaux et al., 2006; Hegde and Bernstein, 2006; Desvaux et al., 2007). Once in the periplasm, the signal sequence is cleaved (Knowles et al., 2009). Periplasmic chaperones, such as SurA, Skp, and DegP, assist in the delivery of the remaining protein to the outer membrane β -barrel Assembly Machinery (Bam) complex (Lazar and Kolter, 1996; Sklar et al., 2007b; Ruiz-Perez et al., 2010). This complex facilitates the insertion of the C-terminal translocation domain into the outer membrane as a monomeric β -barrel (Knowles et al., 2009). The β -barrel domain of the T5aSS initiates translocation of the passenger domain to the cell surface and once the passenger domain is located extracellularly it adopts a folded conformation (Leyton et al., 2012). Whilst the precise mechanism of passenger domain translocation is yet to be elucidated, the Bam complex is integrally involved in the secretion process (Jain and Goldberg, 2007; Ieva et al., 2008; Sauri et al., 2009).

In *Escherichia coli* the Bam complex is comprised of five proteins, BamA-BamE (Voulhoux et al., 2003; Jain and Goldberg, 2007; Rossiter et al., 2011). BamA is an essential outer membrane protein (Werner and Misra, 2005; Knowles et al., 2008). Four periplasmic lipoproteins, BamB-BamE, form a non-covalent interaction with BamA to create the complex (Wu et al., 2005; Knowles et al., 2011). Like BamA, BamD is essential for cell viability (Malinverni et al., 2006). The remaining components are not critical for viability but loss of these components compromises the integrity of the outer membrane and the biogenesis of some outer membrane proteins (Malinverni et al., 2006). Recent studies assessing the contribution of individual BAM complex proteins to the biogenesis of autotransporters have shown that BamA and BamD are essential for the secretion of the classical autotransporters from *E. coli* (Rossiter et al., 2011). In contrast, BamB, BamC, and BamE were not essential for the secretion or folding of these proteins (Rossiter et al., 2011).

Additionally, we have previously reported that the Translocation Assembly Machinery (Tam) complex was also required for efficient secretion of a T5aSS protein (Selkrig et al., 2012). The Tam complex consists of the integral outer membrane protein TamA and the integral inner membrane protein TamB; TamA shares structural similarity with BamA. Recent studies have demonstrated that the Tam complex facilitates efficient assembly of both Type I fimbriae and Type 5e autotransporters (Heinz et al., 2016; Stubenrauch et al., 2016). However, the precise contribution of the Tam complex to the biogenesis of all members of the T5SS is yet to be elucidated.

In contrast to the T5aSS, the mechanisms of secretion via the other subclasses are less understood. Proteins belonging to the T5cSS, or the Trimeric Autotransporter Adhesin (TAA) family, possess key differences when compared to members of the T5aSS (Linke et al., 2006; Hernandez Alvarez et al., 2008). TAAs are defined by the presence of a short 70–100 amino acid C-terminal translocation domain, and thus the protein must form a homotrimer in order to generate a complete β -barrel (Cotter et al., 2005; Wells et al., 2007; Wells et al., 2010; Shahid et al., 2012). Consequently, unlike the passenger domains of the T5aSS, which predominantly adopt a monomeric β -helical conformation, the TAA passenger domains form a trimeric structure composed of oligomeric coiled-coil regions interspersed with distinct head and neck motifs (Linke et al., 2006). The molecular organisation of these proteins presents logistical challenges for the bacterium. For example, the trimer must assemble in a manner that is consistent with the secretion of large passenger domains (up to 5 MDa) to the bacterial cell surface; at the outer membrane each monomer must be maintained in a conformation that is consistent with pairing to its sister monomers; and monomers must be inserted into the outer membrane whilst being prevented from pairing with the nascent β -strands of non-partner proteins. Previously, using the archetypical and widely studied TAA protein, YadA from enteropathogenic *Yersinia*, we demonstrated that BamA was essential for the assembly of a folded functional trimer into the outer membrane (Lehr et al., 2010). Although the Tam complex has been implicated during the biogenesis of some T5aSS proteins, loss of TamA did not affect the outer membrane accumulation or folding of two TAA proteins (Saragliadis et al., 2018). Due to the complexity of T5cSS, we hypothesised that the other components of the Bam complex and/or the components of the Tam complex would play important roles in co-ordinating the assembly of the TAA homotrimer into the outer membrane. Here we tested this hypothesis by determining the impact that loss of each Bam and Tam component had on the assembly and function of two TAAs, YadA from *Yersinia* spp., and SadA from *Salmonella enterica*.

MATERIALS AND METHODS

Bacterial Strains and Growth Conditions

The strains and plasmids used in this study are listed in **Table 1**. All strains were grown in lysogeny broth (LB) with appropriate antibiotics unless otherwise stated. Strains that

TABLE 1 | Strains and plasmids used in this study.

Strain or plasmid	Characteristics	References
Strains		
<i>E. coli</i> HB101	Laboratory <i>E. coli</i> strain	
<i>E. coli</i> HB101 <i>bamB:aph</i>	<i>bamB</i> gene replaced with a kanamycin cassette	Rossiter et al., 2011
<i>E. coli</i> HB101 <i>bamC:aph</i>	<i>bamC</i> gene replaced with a kanamycin cassette	Rossiter et al., 2011
<i>E. coli</i> HB101 <i>bamE:aph</i>	<i>bamE</i> gene replaced with a kanamycin cassette	Rossiter et al., 2011
<i>E. coli</i> BW25113	K-12 derivative	Baba et al., 2006
<i>E. coli</i> BW25113 <i>tamA:aph</i>	<i>tamA</i> gene replaced by kanamycin cassette	This study
<i>E. coli</i> BW25113 <i>tamB:aph</i>	<i>tamB</i> gene replaced by kanamycin cassette	This study
<i>E. coli</i> JWD3	<i>E. coli</i> K-12 BamA depletion strain.	Lehr et al., 2010
<i>E. coli</i> JCM290	<i>E. coli</i> K-12 BamD depletion strain.	Malinverni et al., 2006
Plasmids		
pQE60 <i>NdeI</i>	pQE60 with added <i>NdeI</i> restriction site in the multiple-cloning site and previously existing <i>NdeI</i> site removed	Raghunathan et al., 2011
pDR03	pQE60 <i>NdeI</i> carrying <i>sadA</i> gene in the <i>NdeI-HindIII</i> site	Raghunathan et al., 2011
pET22b(+)	IPTG inducible vector	Invitrogen
pET26b(+)	IPTG inducible vector	Invitrogen
pDR01	<i>sadA</i> gene in the <i>NdeI-EcoRI</i> sites of pET22b(+)	Raghunathan et al., 2011
pET26b-SadA	<i>sadA</i> gene in the <i>NdeI-EcoRI</i> sites of pET26b(+)	This study
pIBA2C	Anhydrotetracycline inducible vector.	IBA Lifesciences
pIBA2-YadA	<i>yadA</i> gene in AHTC-inducible expression vector pASK-IBA2	Grosskinsky et al., 2007
pIBA2C-YadA	<i>yadA</i> gene in the <i>XbaI-SaII</i> sites of pASK-IBA2C	This study

required antibiotics were supplemented with either 100 $\mu\text{g/ml}$ ampicillin or 50 $\mu\text{g/ml}$ kanamycin. The BamA and BamD depletion strains (JWD3, JCM290) were grown in the presence of 0.05% [w/v] arabinose and BamA/BamD were depleted by growth in 0.05% fructose. Plasmid mediated expression of proteins were induced using a final concentration of 0.5 mM IPTG or 0.2 $\mu\text{g/ml}$ of anhydrotetracycline for T7 and pASK vectors, respectively.

DNA Manipulations and Genetic Techniques

All plasmids were transformed into the wild-type and mutant strains via heat shock. To construct the pET26b-SadA plasmid, the *sadA* gene was *EcoRI*, *NdeI* digested from pET22b-SadA and religated into a *EcoRI*, *NdeI* digested pET26b(+) vector and

the correct clone (pET26b-SadA) confirmed by sequencing. The *yadA* gene was excised from pIBA2-YadA using *XbaI* and *SaII* and re-ligated into pASK-IBA2C (IBA Lifesciences) using the same restriction enzymes to create pIBA2C-YadA.

Protein Manipulation Techniques

Whole cell protein fractions were prepared by centrifuging 1 ml of overnight bacterial culture and resuspending the cell pellet in $2 \times$ Laemmli sample buffer (Sigma) and boiled for 5 min at 100°C. Outer membrane protein fractions were prepared as previously described (Parham et al., 2004). Briefly, 50 ml of cultures were grown to an OD₆₀₀ of 1. The pellet was resuspended in 20 ml 10 mM Tris-HCl pH 7.4 buffer and sonicated to lyse cells followed by centrifugation. The supernatant was harvested and centrifuged at 50,000 $\times g$. The resulting pellets were washed in 10 mM Tris-HCl pH 7.4, containing 0.2% [v/v] Triton X-100 and subsequently centrifuged at 50,000 $\times g$. The pellets, representing outer membrane fractions, were washed three times in 10 mM Tris-HCl pH 7.4 before final resuspension in 100 μl 10 mM Tris-HCl pH 7.4. Cellular fractions were analysed by SDS-PAGE and stained with Coomassie blue or transferred to a nitrocellulose membrane for Western blotting as described previously (Wells et al., 2009). Western blotting was performed with either a 1:1,000 dilution of anti-SadA antibody, 1:5,000 anti-YadA, anti-BamA, B, C, D, or E antibody or 1:10,000 anti-OmpF. Finally, a 1:10,000 anti-rabbit dilution of IgG alkaline phosphatase was used before detection with NBP-BCIP (nitroblue tetrazolium chloride-5-bromo-4-chloro-3'-indolylphosphate; Sigma-Aldrich) as the substrate.

Aggregation Assay

Aggregation of the strains was determined using an aggregation settling assay as described previously (Wells et al., 2008). Briefly, overnight cultures were diluted 1:100 and grown in LB until OD₆₀₀ of 0.8, at which point anhydrous tetracycline was added. The cultures were grown and standardised to a final OD₆₀₀ of 1.0 and mixed vigorously for 15 s prior to the start of the assay. Samples (150 μl) were removed at 30 min intervals taken approximately 0.1 cm from the liquid surface and transferred into a microtitre plate maintained on ice. At the end of the experiment the OD₆₀₀ values were measured using a microtitre plate reader.

Biofilm Assay

The ability of strains to form biofilms was determined using the microtitre plate biofilm assay as described previously (Schembri et al., 2001). Briefly, overnight cultures were inoculated into fresh M9 minimal media to an OD_{600nm} of 0.02. The plate was incubated overnight at 37°C with shaking. Following incubation, the cultures were removed from the plate and 150 μl of 0.1% [w/v] crystal violet stain was added to each well. Upon removal of the stain, the plates were washed with distilled water and left to dry. Addition of an 80:20 ethanol: acetone solution solubilised the crystal violet, and the OD_{620 nm} was measured. Each experiment was performed with 12 technical replicates and three biological replicates. Significance was determined by Student's *t*-test.

Bacterial Adherence to Extracellular Matrix (ECM) Molecules

Bacterial adherence to ECM molecules was measured via growth essentially as described previously (Wells et al., 2009). Briefly, cells from overnight cultures were grown to OD₆₀₀ of 1 and appropriately induced for 2 h. These cells were washed in PBS, resuspended to an OD₆₀₀ of 1 and added to wells coated with 20 μg/ml of collagen I (Sigma-Aldrich). BSA-coated wells (50 μg/ml) were used as a control. After 1 h incubation the wells were washed to remove non-adherent bacteria. Adherent cells were incubated in LB for a further 5 h prior to enumeration by direct colony counting on agar plates.

Immunofluorescence and Microscopy Imaging

Fixation and preparation of bacterial cells for immunofluorescence microscopy was performed as previously (Browning et al., 2013). Briefly, fixed cells were put onto poly-L-lysine-coated coverslips, washed three times with PBS and then blocked for 1 h in PBS containing 1% [v/v] bovine serum albumin (Europa Bioproducts). Coverslips were incubated with 1:500 primary antibody for 1 h, washed three times with PBS, and incubated for an additional 1 h with Alexa Fluor® 488 goat anti-rabbit IgG. The coverslips were washed a further three times with sterile PBS before mounting onto glass slides and visualised using either phase contrast or fluorescence using Leica DMRE fluorescence microscope (100 × objective) -DC200 digital camera system.

RESULTS

BamA and BamD Are Required for the Secretion of SadA

Previously, we determined that BamA was required for the biogenesis of the trimeric autotransporter YadA (Lehr et al., 2010). To determine if this observation was true for other TAAs, we investigated whether BamA was essential for the biogenesis of a sequence divergent TAA, namely SadA. We first transformed plasmids expressing either SadA (pSadA), YadA (pYadA) and corresponding empty vector(-) into *E. coli* HB101. Outer membrane fractions of induced cells were probed for either SadA or YadA using specific antibodies. SadA and YadA were detected in the outer membrane of HB101, demonstrating specificity of the antibodies used (Figures 1A,B). To determine the role of BamA during SadA outer membrane biogenesis, pSadA was transformed into the BamA depletion strain *E. coli* JWD3 (Lehr et al., 2010). After growth in the presence or absence of arabinose, outer membrane fractions were harvested and SadA was detected by Western immunoblotting. SadA could be detected under BamA replete conditions (Figure 1C). In contrast, like BamA and the BamA-dependent protein OmpF, SadA levels were severely diminished after growth in BamA-depleted cells.

BamD is the second component of the Bam complex that is vital for cell viability (Malinverni et al., 2006). To determine

whether BamD is required for TAA secretion we followed a similar method to BamA above. The secretion of SadA to the outer membrane was investigated in a BamD depletion strain (JCM290). When BamD was depleted from the cell, the protein levels of SadA and OmpF/C were considerably depleted in the outer membrane (Figure 1D), which was similar to the results observed for BamA.

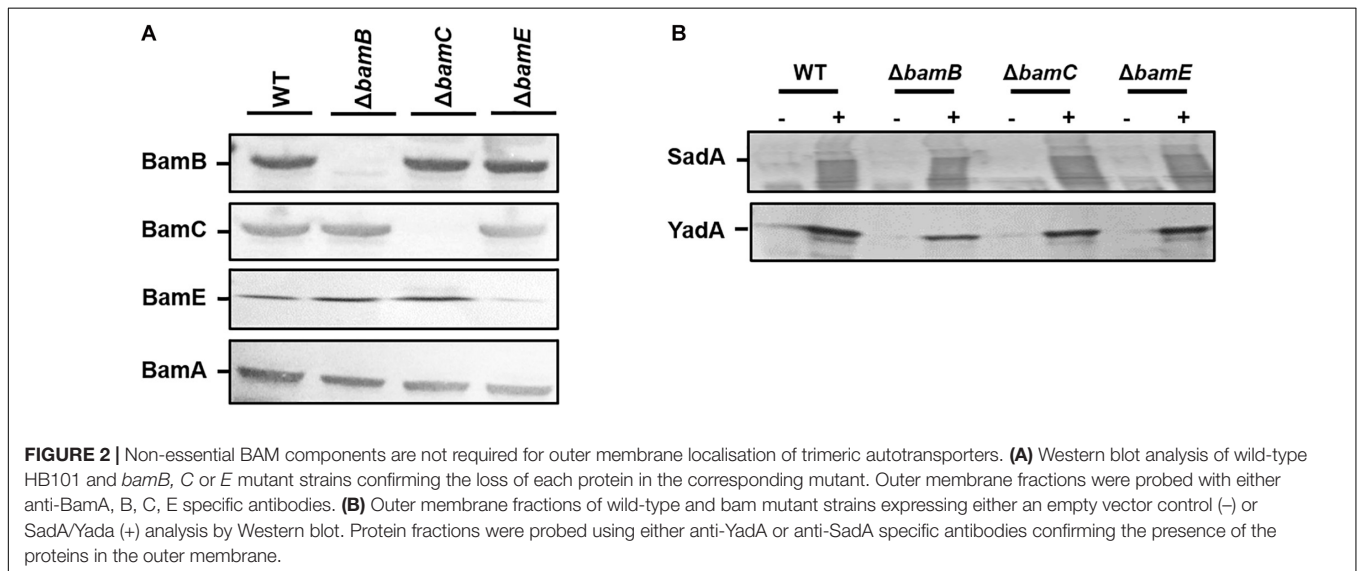
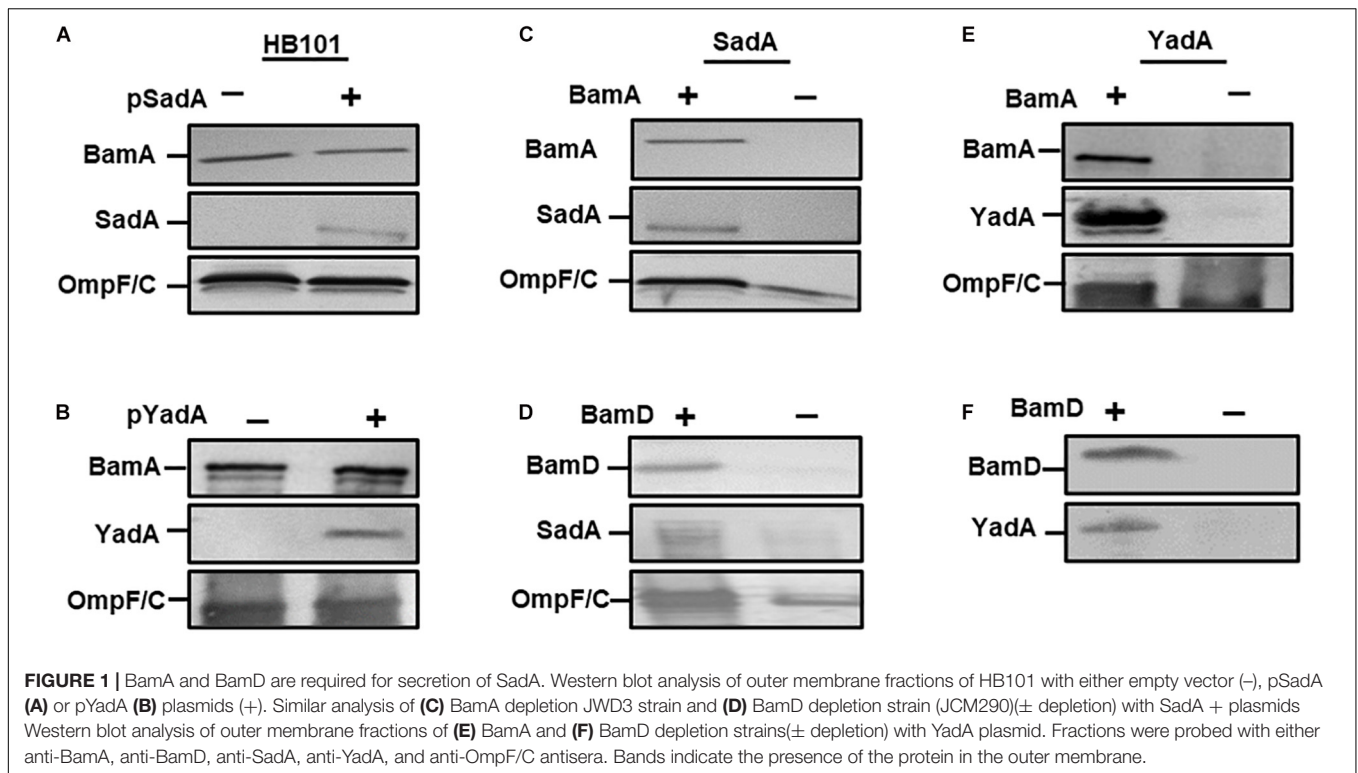
To further confirm the observations that the essential Bam components are required for the secretion of TAAs, YadA was investigated for secretion under BamA and D depletion conditions. JWD3 and JCM290 were transformed pYadA. After growth in the absence or presence of arabinose, the outer membrane proteins were isolated as previously described. The proteins were analysed by SDS-PAGE and Western immunoblot. Under BamA replete conditions, YadA was detected in the outer membrane of JWD3. Upon depletion of BamA, YadA was no longer detectable in the outer membrane (Figure 1E), as previously reported (Lehr et al., 2010). Similarly, when BamD was depleted from the cells, YadA could no longer be detected in the outer membrane (Figure 1F). These data reinforce previous observations that BamA is required for the biogenesis of TAAs and demonstrate for the first time that BamD is essential for TAA biogenesis.

The Non-essential Bam Components Are Not Required for Outer Membrane Localisation of TAA's

While BamA and BamD are required for the biogenesis of TAAs, we sought to investigate the contribution of the non-essential components of the Bam complex (BamB, C, and E) for TAA biogenesis. *E. coli* wild-type and *bamB*, *bamC*, and *bamE* deletion mutants (Rossiter et al., 2011) were transformed with pDR03 (SadA+) or pIBA2-YadA (YadA+) or empty vector. Outer membrane protein fractions of each sample were probed for the presence of SadA, YadA and each Bam component. The Bam mutants were confirmed by Western blot analysis (Figure 2A) and strains expressing either SadA or YadA were shown to have the protein present in the outer membrane fractions (Figure 2B). The absence of BamB, BamC, or BamE did not affect the accumulation of either YadA or SadA in the outer membrane (Figure 2B).

The Tam Complex Is Not Essential for Outer Membrane Localisation of TAA's

Earlier studies demonstrated that the Tam complex is required for the correct biogenesis of members of the T5aSS. Therefore, we hypothesised that the TAAs proteins would also require the assistance of the Tam complex for biogenesis. To test this, we first created *tamA* and *tamB* null mutants by P1 transducing the corresponding mutations from the Keio collection, and confirmed by Western blot analysis of whole cell protein fractions (Figure 3A). The resulting mutants were transformed with either the empty vector or plasmids encoding either SadA or YadA and outer membrane fractions probed for presence of YadA or SadA (Figure 3B). In the absence of TamA or TamB, both YadA and SadA

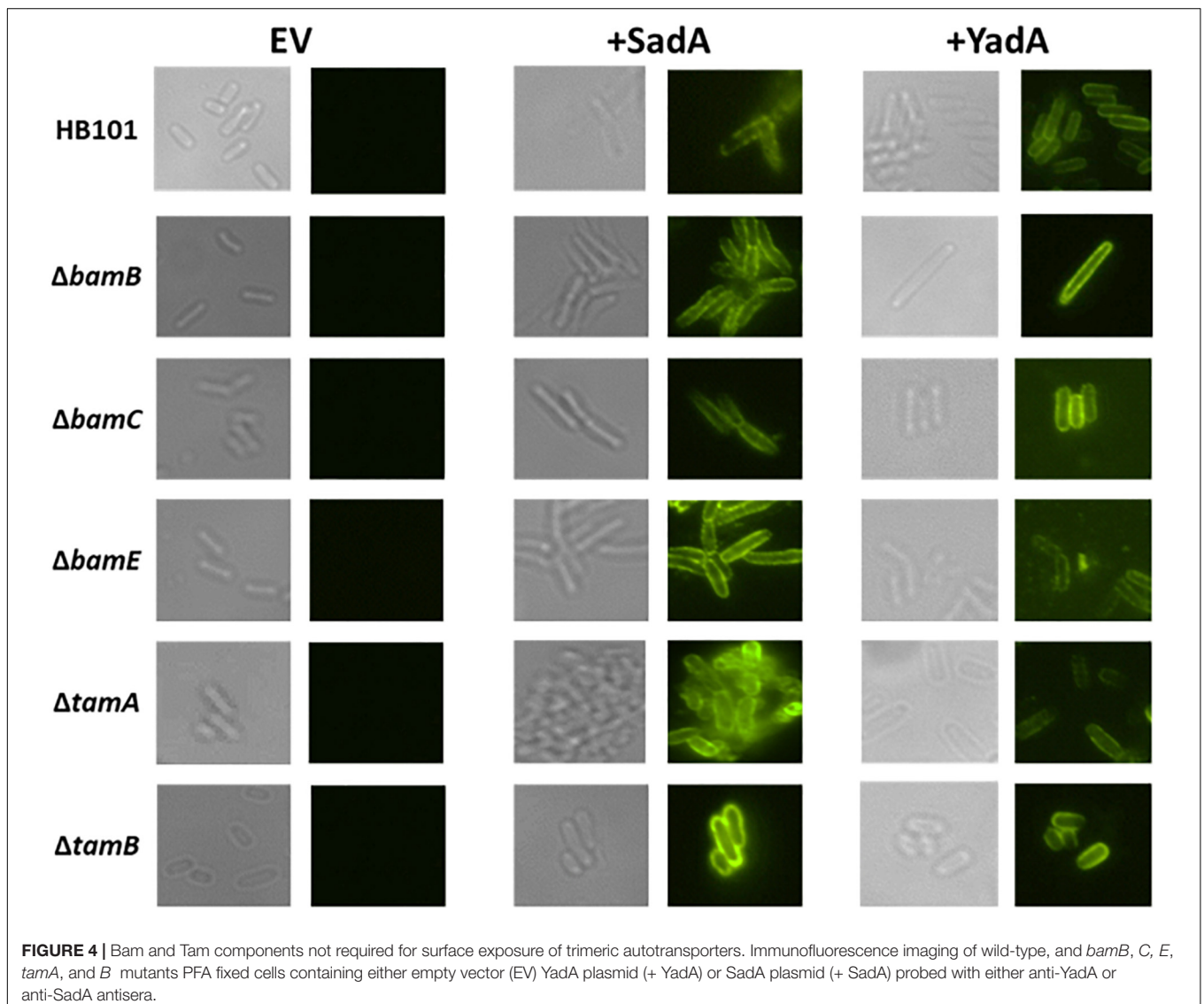
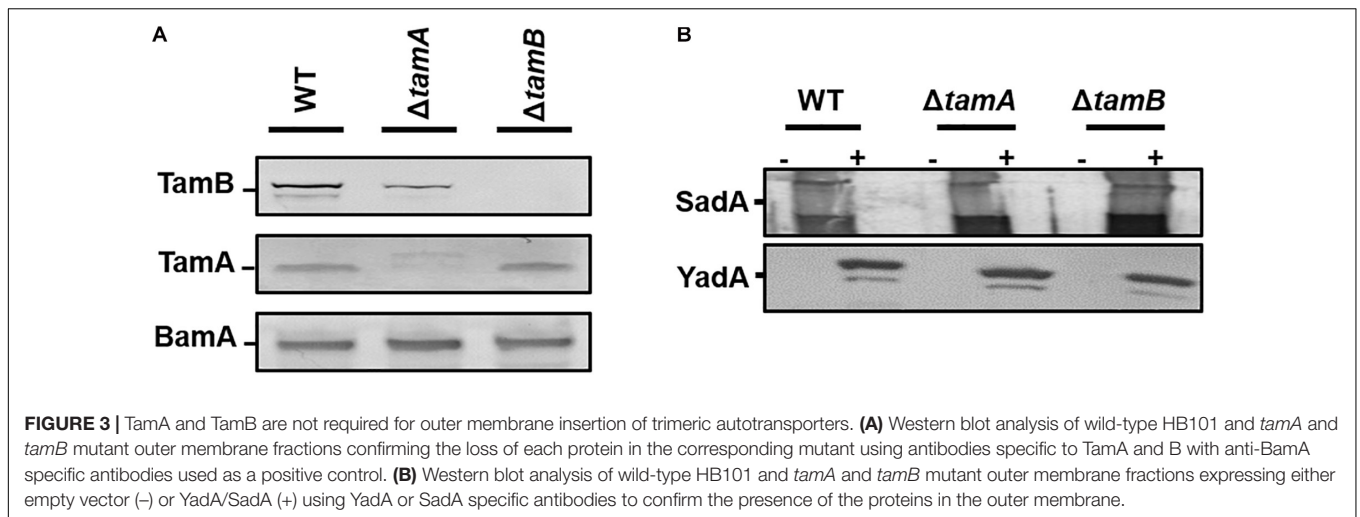


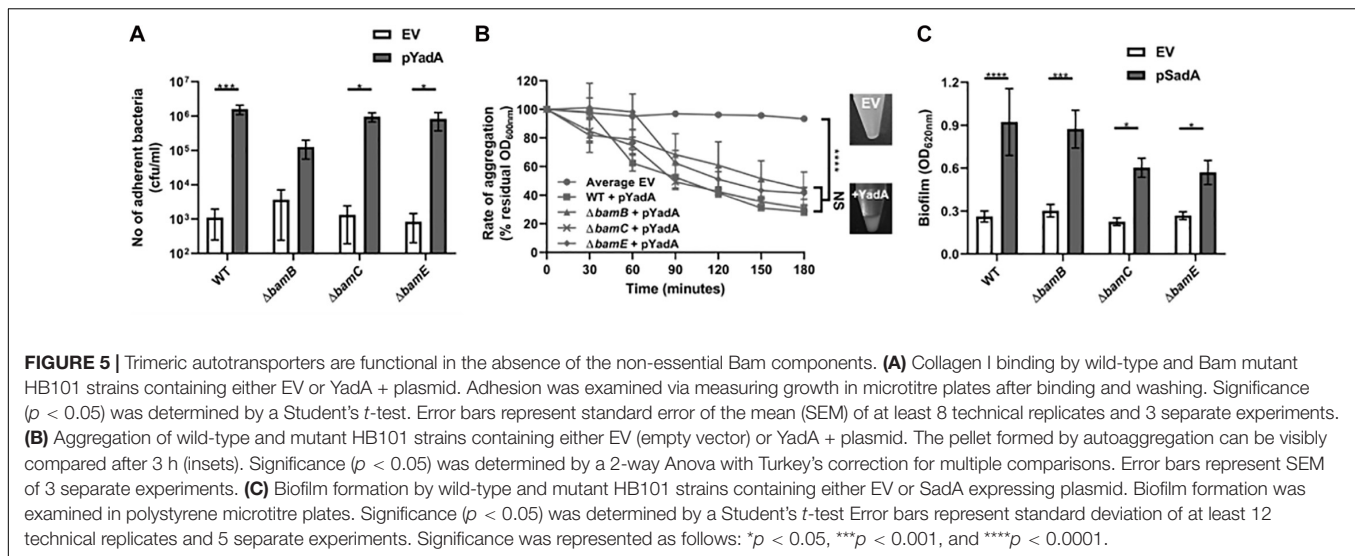
are incorporated into the outer membrane at levels similar to the wild-type parental strain, suggesting that the Tam complex is not essential for the localisation of TAAs to the OM (Figure 3B).

TAA Passenger Domains Are Secreted to the Cell Surface in *bam* and *tam* Mutants

Previously, we observed intermediates of the T5aSS that are localised to the outer membrane but are unable to translocate

their cognate passenger domains to the cell surface (Leyton et al., 2011). Therefore, we hypothesised that whilst the non-essential Bam components and the Tam components were not required for localisation to the outer membrane, they might be responsible for holding the C-terminal translocation unit and/or passenger domains in a conformation that permits secretion of the passenger domain to the cell surface. The surface exposure of both SadA and YadA were determined by specific immunofluorescence microscopy in WT, BamB, C, E and TamA and B mutants (Figure 4). Both YadA and SadA

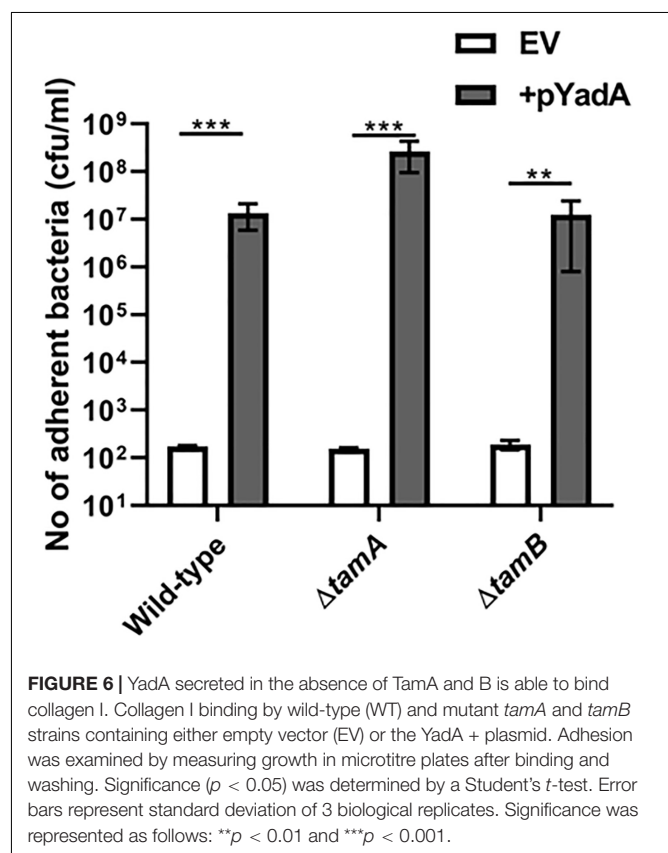




were detectable on the surface of all strains containing the corresponding vector including all three Bam mutants and both Tam mutants (Figure 4).

TAA Passenger Domains Are Functional in *bam* and *tam* Mutants

Although the Tam and the non-essential Bam components are not required for surface localisation of the passenger domain, they may be required for the correct folding and function of TAA passenger domains on the cell surface. Thus, we investigated whether the TAA proteins retained functional competence in these mutant backgrounds. As YadA is known to mediate binding to collagen I and to promote autoaggregation (Nummelin et al., 2004), the *E. coli* *bamB*, *bamC*, and *bamE* mutants expressing *yadA* were tested in a growth-based collagen binding assay. Expression of *yadA* in WT and *bamC* and *E* mutant strains promoted a significant increase in binding to collagen I compared to the empty vector controls (Figure 5A). Whilst there was an increase in bacterial adherence to collagen I in the *bamB* mutant, this was not significantly different to the empty vector control (Figure 5A). As *bamB* mutants are known to have a reduced growth rate, we concluded that this lack of significance was probably due to slower growth of the *bamB* mutant. YadA is also known to promote cell-cell autoaggregation therefore we tested the ability of YadA to promote autoaggregation in the non-essential Bam mutants. Induction of *yadA* expression in all strains led to significant autoaggregation, in contrast to empty vector control strains which had no discernible aggregation (Figure 5B). Previously, we demonstrated that SadA could promote biofilm production *in vitro* (Raghunathan et al., 2011). Thus, we investigated the ability of wild-type and Bam mutant strains, either expressing or not expressing SadA, for their ability to form a biofilm on polystyrene plates when grown in M9 minimal medium. All strains expressing SadA had significantly ($P < 0.05$) higher biofilm formation than the empty vector controls (Figure 5C).



To investigate whether TamA and TamB were required for correct folding of TAA passenger domains, the *tam* mutants described above were monitored for SadA and YadA function. As above we tested the WT and *tamA* and *B* mutants for their ability to bind collagen I. All three strains expressing YadA had significantly higher collagen I binding compared to empty vector controls (Figure 6). We found that *tamA* and *B*

mutants in *E. coli* form high biofilm (data not shown) and thus were unable to determine whether SadA could promote biofilm formation in these strains. These data suggest that TAAs are secreted, folded and function even in the absence of BamB, C, E, TamA or B mutants.

DISCUSSION

The proteins SadA and YadA are both trimeric autotransporter adhesins, however they vary greatly in sequence homology, length, and function. YadA is the prototypical TAA, its trimeric structure composed of a β -barrel in the outer membrane, with a single stalk, neck and head domain extending 35 nm into the extracellular environment (Koretke et al., 2006). In contrast, SadA extends 108 nm and is composed of multiple stalk, neck and head domains alternatingly dispersed along the length of the passenger domain (Hartmann et al., 2012). Here we found that both BamA and BamD are required for the secretion and function of YadA and SadA, and by implication all TAAs. This is in agreement with studies on other outer membrane proteins (Rossiter et al., 2011), and is further evidence that BamA and BamD are essential to assemble proteins into the outer membrane (Malinverni et al., 2006; Hagan et al., 2010). In contrast, both SadA and YadA were functionally assembled in the outer membrane in *bamB*, *bamC*, and *bamE* mutant strains. These three lipoproteins have been shown to be non-essential in *E. coli* and although they are needed for the secretion of some outer membrane proteins (Charlson et al., 2006; Hagan et al., 2010), are also not essential for others (Sklar et al., 2007a; Volokhina et al., 2009; Weirich et al., 2017). Importantly, our findings corroborate results from *Yersinia enterocolitica*, that showed the non-essential Bam components are not required for YadA secretion or function, suggesting our results using heterologous expression in *E. coli* is representative of native outer membrane biogenesis (Weirich et al., 2017). In addition, and consistent with previous studies (Saragliadis et al., 2018), we observe that TamA and B are not required for the biogenesis or function of TAA proteins. However, TamA and B have been implicated in the secretion of classical autotransporters (Selkrig et al., 2012), suggesting TamA and B may be involved in secretion of a specific subset of Type 5 proteins or may have importance under specific conditions.

Recent evidence suggests that trimerisation of TAAs occurs in the periplasm prior to outer membrane insertion (Sikdar and Bernstein, 2019) and that TAA passenger translocation occurs via hairpin intermediates (Chauhan et al., 2019). The ability of SadA to induce biofilm formation and YadA to induce autoaggregation in all of the mutants at levels similar to the wild-type suggests that these proteins are functionally assembled in a folded state on the surface of the bacterium. These data indicate that the non-essential Bam components and the Tam components are not essential for the translocation or folding of TAAs on the bacterial cell surface. This is in agreement with other studies that demonstrate other proteins such as Pet, TolC are functionally assembled in *bamB* mutants (Charlson et al., 2006; Rossiter et al., 2011). Additionally, TAA proteins such as NhhA exist in

bacterial species (*Neisseria meningitidis*) that do not have a BamB homologue, suggesting it is not required for proper assembly of this protein class (Volokhina et al., 2009). Interestingly, although SadA protein levels in outer membrane preparations were similar in all strains, biofilm formation induced by SadA was significantly lower in a *bamC* and *bamE* knockout compared to wild-type ($p < 0.05$) (Figure 5C). This suggests that these lipoproteins may play a more subtle role in TAA secretion, and multiple lipoprotein knockouts may lead to secretion defects. Indeed, in *N. meningitidis* a *bamC/E* double knockout leads to a lethal phenotype (Volokhina et al., 2009) and it has recently been shown that a double *bamB/bamE* mutant is lethal in *E. coli* (Tellez and Misra, 2012), suggesting the non-essential lipoproteins have some redundancy.

In conclusion, we show that the non-essential components of the Bam complex and both TamA and B are not essential for TAA assembly. Given the complex nature of TAA biogenesis, due to large and complex passenger structures and the need for trimerisation, it is plausible that loss of Bam and/or Tam proteins could lead to a reduced efficiency of TAA passenger translocation. Further experimental evidence would be required to investigate this hypothesis.

DATA AVAILABILITY STATEMENT

The raw data supporting the conclusions of this article will be made available by the authors, without undue reservation.

AUTHOR CONTRIBUTIONS

JR: conceptualisation, data curation, formal analysis, investigation, methodology, project administration, and writing—original draft. CI: conceptualisation, data curation, formal analysis, investigation, methodology, and writing—review and editing. TW: formal analysis, investigation, methodology, resources, supervision, writing—original draft, and writing—review and editing. AR: data curation, formal analysis, investigation, methodology, project administration, resources, and writing—review and editing. DB: data curation, formal analysis, investigation, project administration, resources, supervision, and writing—review and editing. FM: conceptualisation, investigation, methodology, project administration, resources, validation, and writing—review and editing. JL, MS, and DL: methodology, and resources, writing—review and editing. AC: formal analysis, funding acquisition, investigation, methodology, supervision, and writing—review and editing. IH: conceptualisation, formal analysis, funding acquisition, investigation, methodology, project administration, resources, supervision, and writing—review and editing. All authors contributed to the article and approved the submitted version.

FUNDING

This work was supported by Research Council of Norway Young Investigator grant (no. 249793 to JL).

REFERENCES

- Henderson, I. R., Navarro-Garcia, F., Desvaux, M., Fernandez, R. C., and Ala'Aldeen, D. (2004). Type V protein secretion pathway: the autotransporter story. *Microbiol. Mol. Biol. Rev.* 68, 692–744. doi: 10.1128/mmr.68.4.692-744.2004
- Desvaux, M., Khan, A., Beatson, S. A., Scott-Tucker, A., and Henderson, I. R. (2005). Protein secretion systems in *Fusobacterium nucleatum*: genomic identification of Type 4 piliation and complete Type V pathways brings new insight into mechanisms of pathogenesis. *Biochim. Biophys. Acta* 1713, 92–112. doi: 10.1016/j.bbame.2005.05.002
- Henderson, I. R., and Lam, A. C. (2001). Polymorphic proteins of Chlamydia spp.—autotransporters beyond the *Proteobacteria*. *Trends Microbiol.* 9, 573–578. doi: 10.1016/s0966-842x(01)02234-x
- Henderson, I. R., Cappello, R., and Nataro, J. P. (2000). Autotransporter proteins, evolution and redefining protein secretion. *Trends Microbiol.* 8, 529–532. doi: 10.1016/s0966-842x(00)10185-9
- Leo, J. C., Grin, I., and Linke, D. (2012). Type V secretion: mechanism(s) of autotransport through the bacterial outer membrane. *Philos. Trans. R. Soc. Lond. B Biol. Sci.* 367, 1088–1101. doi: 10.1098/rstb.2011.0208
- Tsai, J. C., Yen, M. R., Castillo, R., Leyton, D. L., Henderson, I. R., and Saier, M. H. Jr. (2010). The bacterial intimins and invasins: a large and novel family of secreted proteins. *PLoS One* 5:e14403. doi: 10.1371/journal.pone.0014403
- Desvaux, M., Parham, N. J., and Henderson, I. R. (2004). The autotransporter secretion system. *Res. Microbiol.* 155, 53–60. doi: 10.1016/j.resmic.2003.10.002
- Leo, J. C., Oberhettinger, P., Schutz, M., and Linke, D. (2014). The inverse autotransporter family: intimin, invasin and related proteins. *Int. J. Med. Microbiol.* 305, 276–282. doi: 10.1016/j.ijmm.2014.12.011
- Raghunathan, D., Wells, T. J., Morris, F. C., Shaw, R. K., Bobat, S., Peters, S. E., et al. (2011). SadA, a trimeric autotransporter from *Salmonella enterica* serovar Typhimurium, can promote biofilm formation and provides limited protection against infection. *Infect. Immun.* 79, 4342–4352. doi: 10.1128/iai.05592-11
- Leo, J. C., Elovaara, H., Brodsky, B., Skurnik, M., and Goldman, A. (2008). The *Yersinia* adhesin YadA binds to a collagenous triple-helical conformation but without sequence specificity. *Protein Eng. Des. Sel.* 21, 475–484. doi: 10.1093/protein/gzn025
- Schindler, M. K., Schutz, M. S., Muhlenkamp, M. C., Rooijackers, S. H., Hallstrom, T., Zipfel, P. F., et al. (2012). *Yersinia enterocolitica* YadA mediates complement evasion by recruitment and inactivation of C3 products. *J. Immunol.* 189, 4900–4908. doi: 10.4049/jimmunol.1201383
- Hegde, R. S., and Bernstein, H. D. (2006). The surprising complexity of signal sequences. *Trends Biochem. Sci.* 31, 563–571. doi: 10.1016/j.tibs.2006.08.004
- Desvaux, M., Scott-Tucker, A., Turner, S. M., Cooper, L. M., Huber, D., Nataro, J. P., et al. (2007). A conserved extended signal peptide region directs posttranslational protein translocation via a novel mechanism. *Microbiology* 153, 59–70. doi: 10.1099/mic.0.29091-0
- Desvaux, M., Cooper, L. M., Filenko, N. A., Scott-Tucker, A., Turner, S. M., Cole, J. A., et al. (2006). The unusual extended signal peptide region of the type V secretion system is phylogenetically restricted. *FEMS Microbiol. Lett.* 264, 22–30. doi: 10.1111/j.1574-6968.2006.00425.x
- Knowles, T. J., Scott-Tucker, A., Overduin, M., and Henderson, I. R. (2009). Membrane protein architects: the role of the BAM complex in outer membrane protein assembly. *Nat. Rev. Microbiol.* 7, 206–214. doi: 10.1038/nrmicro.2009.2069
- Lazar, S. W., and Kolter, R. (1996). SurA assists the folding of *Escherichia coli* outer membrane proteins. *J. Bacteriol.* 178, 1770–1773. doi: 10.1128/jb.178.6.1770-1773.1996
- Sklar, J. G., Wu, T., Kahne, D., and Silhavy, T. J. (2007b). Defining the roles of the periplasmic chaperones SurA, Skp, and DegP in *Escherichia coli*. *Genes Dev.* 21, 2473–2484. doi: 10.1101/gad.1581007
- Ruiz-Perez, F., Henderson, I. R., and Nataro, J. P. (2010). Interaction of FkpA, a peptidyl-prolyl cis/trans isomerase with EspP autotransporter protein. *Gut Microbes* 1, 339–344. doi: 10.4161/gmic.1.5.13436
- Leyton, D. L., Rossiter, A. E., and Henderson, I. R. (2012). From self sufficiency to dependence: mechanisms and factors important for autotransporter biogenesis. *Nat. Rev. Microbiol.* 10, 213–225. doi: 10.1038/nrmicro2733
- Ieva, R., Skillman, K. M., and Bernstein, H. D. (2008). Incorporation of a polypeptide segment into the beta-domain pore during the assembly of a bacterial autotransporter. *Mol. Microbiol.* 67, 188–201. doi: 10.1111/j.1365-2958.2007.06048.x
- Jain, S., and Goldberg, M. B. (2007). Requirement for YaeT in the outer membrane assembly of autotransporter proteins. *J. Bacteriol.* 189, 5393–5398. doi: 10.1128/jb.00228-07
- Sauri, A., Soprova, Z., Wickstrom, D., de Gier, J. W., Van der Schors, R. C., Smit, A. B., et al. (2009). The Bam (Omp85) complex is involved in secretion of the autotransporter haemoglobin protease. *Microbiology* 155, 3982–3991. doi: 10.1099/mic.0.034991-0
- Rossiter, A. E., Leyton, D. L., Tveen-Jensen, K., Browning, D. F., Sevastyanovich, Y., Knowles, T. J., et al. (2011). The essential beta-barrel assembly machinery complex components BamD and BamA are required for autotransporter biogenesis. *J. Bacteriol.* 193, 4250–4253. doi: 10.1128/jb.00192-11
- Voulhoux, R., Bos, M. P., Geurtsen, J., Mols, M., and Tommassen, J. (2003). Role of a highly conserved bacterial protein in outer membrane protein assembly. *Science* 299, 262–265. doi: 10.1126/science.1078973
- Knowles, T. J., Jeeves, M., Bobat, S., Dancea, F., McClelland, D., Palmer, T., et al. (2008). Fold and function of polypeptide transport-associated domains responsible for delivering unfolded proteins to membranes. *Mol. Microbiol.* 68, 1216–1227. doi: 10.1111/j.1365-2958.2008.06225.x
- Werner, J., and Misra, R. (2005). YaeT (Omp85) affects the assembly of lipid-dependent and lipid-independent outer membrane proteins of *Escherichia coli*. *Mol. Microbiol.* 57, 1450–1459. doi: 10.1111/j.1365-2958.2005.04775.x
- Knowles, T. J., Browning, D. F., Jeeves, M., Maderbocus, R., Rajesh, S., Sridhar, P., et al. (2011). Structure and function of BamE within the outer membrane and the beta-barrel assembly machine. *EMBO Rep.* 12, 123–128. doi: 10.1038/embor.2010.202
- Wu, T., Malinverni, J., Ruiz, N., Kim, S., Silhavy, T. J., and Kahne, D. (2005). Identification of a multicomponent complex required for outer membrane biogenesis in *Escherichia coli*. *Cell* 121, 235–245. doi: 10.1016/j.cell.2005.02.015
- Malinverni, J. C., Werner, J., Kim, S., Sklar, J. G., Kahne, D., Misra, R., et al. (2006). YfiO stabilizes the YaeT complex and is essential for outer membrane protein assembly in *Escherichia coli*. *Mol. Microbiol.* 61, 151–164. doi: 10.1111/j.1365-2958.2006.05211.x
- Selkrig, J., Mosbahi, K., Webb, C. T., Belousoff, M. J., Perry, A. J., Wells, T. J., et al. (2012). Discovery of an archetypal protein transport system in bacterial outer membranes. *Nat. Struct. Mol. Biol.* 19, 506–510, S1.
- Stubenrauch, C., Belousoff, M. J., Hay, I. D., Shen, H. H., Lillington, J., Tuck, K. L., et al. (2016). Effective assembly of fimbriae in *Escherichia coli* depends on the translocation assembly module nanomachine. *Nat. Microbiol.* 1:16064.
- Heinz, E., Stubenrauch, C. J., Grinter, R., Croft, N. P., Purcell, A. W., Strugnell, R. A., et al. (2016). Conserved Features in the Structure, Mechanism, and Biogenesis of the Inverse Autotransporter Protein Family. *Genome Biol. Evol.* 8, 1690–1705. doi: 10.1093/gbe/evw112
- Hernandez Alvarez, B., Hartmann, M. D., Albrecht, R., Lupas, A. N., Zeth, K., and Linke, D. (2008). A new expression system for protein crystallization using trimeric coiled-coil adaptors. *Protein Eng. Des. Sel.* 21, 11–18. doi: 10.1093/protein/gzn071
- Linke, D., Riess, T., Autenrieth, I. B., Lupas, A., and Kempf, V. A. (2006). Trimeric autotransporter adhesins: variable structure, common function. *Trends Microbiol.* 14, 264–270. doi: 10.1016/j.tim.2006.04.005
- Wells, T. J., Totsika, M., and Schembri, M. A. (2010). Autotransporters of *Escherichia coli*: a sequence-based characterization. *Microbiology* 156, 2459–2469. doi: 10.1099/mic.0.039024-0
- Wells, T. J., Tree, J. J., Ulett, G. C., and Schembri, M. A. (2007). Autotransporter proteins: novel targets at the bacterial cell surface. *FEMS Microbiol. Lett.* 274, 163–172. doi: 10.1111/j.1574-6968.2007.00833.x
- Cotter, S. E., Surana, N. K., and St Geme, J. W. III (2005). Trimeric autotransporters: a distinct subfamily of autotransporter proteins. *Trends Microbiol.* 13, 199–205. doi: 10.1016/j.tim.2005.03.004
- Shahid, S. A., Bardiaux, B., Franks, W. T., Krabben, L., Habeck, M., van Rossum, B. J., et al. (2012). Membrane-protein structure determination by solid-state NMR spectroscopy of microcrystals. *Nat. Methods* 9, 1212–1217.
- Lehr, U., Schutz, M., Oberhettinger, P., Ruiz-Perez, F., Donald, J. W., Palmer, T., et al. (2010). C-terminal amino acid residues of the trimeric autotransporter adhesin YadA of *Yersinia enterocolitica* are decisive for its recognition and assembly by BamA. *Mol. Microbiol.* 78, 932–946. doi: 10.1111/j.1365-2958.2010.07377.x

- Saragliadis, A., Trunk, T., and Leo, J. C. (2018). Producing gene deletions in *Escherichia coli* by P1 transduction with excisable antibiotic resistance cassettes. *J. Vis. Exp.* 139:58267. doi: 10.3791/58267
- Parham, N. J., Srinivasan, U., Desvaux, M., Foxman, B., Marrs, C. F., and Henderson, I. R. (2004). PicU, a second serine protease autotransporter of uropathogenic *Escherichia coli*. *FEMS Microbiol. Lett.* 230, 73–83. doi: 10.1016/s0378-1097(03)00862-0
- Wells, T. J., McNeilly, T. N., Totsika, M., Mahajan, A., Gally, D. L., and Schembri, M. A. (2009). The *Escherichia coli* O157:H7 EhaB autotransporter protein binds to laminin and collagen I and induces a serum IgA response in O157:H7 challenged cattle. *Environ. Microbiol.* 11, 1803–1814. doi: 10.1111/j.1462-2920.2009.01905.x
- Wells, T. J., Sherlock, O., Rivas, L., Mahajan, A., Beatson, S. A., Torpdahl, M., et al. (2008). EhaA is a novel autotransporter protein of enterohemorrhagic *Escherichia coli* O157:H7 that contributes to adhesion and biofilm formation. *Environ. Microbiol.* 10, 589–604. doi: 10.1111/j.1462-2920.2007.01479.x
- Schembri, M. A., Kjaergaard, K., Sokurenko, E. V., and Klemm, P. (2001). Molecular characterization of the *Escherichia coli* FimH adhesin. *J. Infect. Dis.* 183(Suppl. 1), S28–S31.
- Browning, D. F., Matthews, S. A., Rossiter, A. E., Sevastyanovich, Y. R., Jeeves, M., Mason, J. L., et al. (2013). Mutational and topological analysis of the *Escherichia coli* BamA protein. *PLoS One* 8:e84512. doi: 10.1371/journal.pone.0084512
- Leyton, D. L., Sevastyanovich, Y. R., Browning, D. F., Rossiter, A. E., Wells, T. J., Fitzpatrick, R. E., et al. (2011). Size and conformation limits to secretion of disulfide-bonded loops in autotransporter proteins. *J. Biol. Chem.* 286, 42283–42291. doi: 10.1074/jbc.m111.306118
- Nummelin, H., Merckel, M. C., Leo, J. C., Lankinen, H., Skurnik, M., and Goldman, A. (2004). The *Yersinia* adhesin YadA collagen-binding domain structure is a novel left-handed parallel beta-roll. *EMBO J.* 23, 701–711. doi: 10.1038/sj.emboj.7600100
- Koretke, K. K., Szczesny, P., Gruber, M., and Lupas, A. N. (2006). Model structure of the prototypical non-fimbrial adhesin YadA of *Yersinia enterocolitica*. *J. Struct. Biol.* 155, 154–161. doi: 10.1016/j.jsb.2006.03.012
- Hartmann, M. D., Grin, I., Dunin-Horkawicz, S., Deiss, S., Linke, D., Lupas, A. N., et al. (2012). Complete fiber structures of complex trimeric autotransporter adhesins conserved in enterobacteria. *Proc. Natl. Acad. Sci. U.S.A.* 109, 20907–20912. doi: 10.1073/pnas.1211872110
- Hagan, C. L., Kim, S., and Kahne, D. (2010). Reconstitution of outer membrane protein assembly from purified components. *Science* 328, 890–892. doi: 10.1126/science.1188919
- Charlson, E. S., Werner, J. N., and Misra, R. (2006). Differential effects of yfgL mutation on *Escherichia coli* outer membrane proteins and lipopolysaccharide. *J. Bacteriol.* 188, 7186–7194. doi: 10.1128/jb.00571-06
- Sklar, J. G., Wu, T., Gronenberg, L. S., Malinverni, J. C., Kahne, D., and Silhavy, T. J. (2007a). Lipoprotein SmpA is a component of the YaeT complex that assembles outer membrane proteins in *Escherichia coli*. *Proc. Natl. Acad. Sci. U.S.A.* 104, 6400–6405. doi: 10.1073/pnas.0701579104
- Volokhina, E. B., Beckers, F., Tommassen, J., and Bos, M. P. (2009). The beta-barrel outer membrane protein assembly complex of *Neisseria meningitidis*. *J. Bacteriol.* 191, 7074–7085. doi: 10.1128/jb.00737-09
- Weirich, J., Brautigam, C., Muhlenkamp, M., Franz-Wachtel, M., Macek, B., Meuskens, I., et al. (2017). Identifying components required for OMP biogenesis as novel targets for anti-infective drugs. *Virulence* 8, 1170–1188. doi: 10.1080/21505594.2016.1278333
- Sikdar, R., and Bernstein, H. D. (2019). Sequential translocation of polypeptides across the bacterial outer membrane through the trimeric autotransporter pathway. *mBio* 10:e01973-19.
- Chauhan, N., Hatlem, D., Orwick-Rydmark, M., Schneider, K., Floetenmeyer, M., van Rossum, B., et al. (2019). Insights into the autotransport process of a trimeric autotransporter, *Yersinia* Adhesin A (YadA). *Mol. Microbiol.* 111, 844–862. doi: 10.1111/mmi.14195
- Tellez, R. Jr., and Misra, R. (2012). Substitutions in the BamA beta-barrel domain overcome the conditional lethal phenotype of a DeltabamB DeltabamE strain of *Escherichia coli*. *J. Bacteriol.* 194, 317–324. doi: 10.1128/jb.06192-11
- Baba, T., Ara, T., Hasegawa, M., Takai, Y., Okumura, Y., Baba, M., et al. (2006). Construction of *Escherichia coli* K-12 in-frame, single-gene knockout mutants: the Keio collection. *Mol. Syst. Biol.* 2, 20060008.
- Grosskinsky, U., Schutz, M., Fritz, M., Schmid, Y., Lamparter, M. C., Szczesny, P., et al. (2007). A conserved glycine residue of trimeric autotransporter domains plays a key role in *Yersinia* adhesin A autotransport. *J. Bacteriol.* 189, 9011–9019. doi: 10.1128/jb.00985-07

Conflict of Interest: The authors declare that the research was conducted in the absence of any commercial or financial relationships that could be construed as a potential conflict of interest.

Copyright © 2021 Rooke, Icke, Wells, Rossiter, Browning, Morris, Leo, Schütz, Autenrieth, Cunningham, Linke and Henderson. This is an open-access article distributed under the terms of the Creative Commons Attribution License (CC BY). The use, distribution or reproduction in other forums is permitted, provided the original author(s) and the copyright owner(s) are credited and that the original publication in this journal is cited, in accordance with accepted academic practice. No use, distribution or reproduction is permitted which does not comply with these terms.