

# A combined approach to correct posterior left ventricular aneurysm, aortic stenosis and coronary artery disease

Patel, Akshay J; Mohamed, Saifullah; Iqbal, Yassir; Kar, Ashok; Soppa, Gopal

DOI:

[10.1093/jscr/rjaa356](https://doi.org/10.1093/jscr/rjaa356)

License:

Creative Commons: Attribution-NonCommercial (CC BY-NC)

*Document Version*

Publisher's PDF, also known as Version of record

*Citation for published version (Harvard):*

Patel, AJ, Mohamed, S, Iqbal, Y, Kar, A & Soppa, G 2020, 'A combined approach to correct posterior left ventricular aneurysm, aortic stenosis and coronary artery disease', *Journal of Surgical Case Reports*, vol. 2020, no. 10, rjaa356. <https://doi.org/10.1093/jscr/rjaa356>

[Link to publication on Research at Birmingham portal](#)

## General rights

Unless a licence is specified above, all rights (including copyright and moral rights) in this document are retained by the authors and/or the copyright holders. The express permission of the copyright holder must be obtained for any use of this material other than for purposes permitted by law.

- Users may freely distribute the URL that is used to identify this publication.
- Users may download and/or print one copy of the publication from the University of Birmingham research portal for the purpose of private study or non-commercial research.
- User may use extracts from the document in line with the concept of 'fair dealing' under the Copyright, Designs and Patents Act 1988 (?)
- Users may not further distribute the material nor use it for the purposes of commercial gain.

Where a licence is displayed above, please note the terms and conditions of the licence govern your use of this document.

When citing, please reference the published version.

## Take down policy

While the University of Birmingham exercises care and attention in making items available there are rare occasions when an item has been uploaded in error or has been deemed to be commercially or otherwise sensitive.

If you believe that this is the case for this document, please contact [UBIRA@lists.bham.ac.uk](mailto:UBIRA@lists.bham.ac.uk) providing details and we will remove access to the work immediately and investigate.

## CASE REPORT

# A combined approach to correct posterior left ventricular aneurysm, aortic stenosis and coronary artery disease

Akshay J. Patel<sup>1,3</sup>, Saifullah Mohamed<sup>2</sup>, Yassir Iqbal<sup>3</sup>, Ashok Kar<sup>4</sup> and Gopal Soppa<sup>5</sup>

<sup>1</sup>Institute of Immunology and Immunotherapy, University of Birmingham, Birmingham, B15 2TT, UK,

<sup>2</sup>Department of Cardiothoracic Surgery, Royal Stoke University Hospital, Stoke-On-Trent, UK, <sup>3</sup>Department of Cardiothoracic Surgery, Queen Elizabeth Hospital, Birmingham, UK, <sup>4</sup>Department of Cardiothoracic Surgery, Atkinson Morley Wing, St. George's Hospital, London, UK and <sup>5</sup>Department of Cardiothoracic Surgery, Bart's Heart Centre, Bart's Health NHS Trust, London, UK

\*Correspondence address: Institute of Immunology and Immunotherapy, University of Birmingham, Edgbaston, Birmingham B15 2TT, UK.  
Tel: 0121 4143344; E-mail: ajp.788@gmail.com

## Abstract

Ischaemic heart disease and aortic stenosis are potentially life-threatening conditions. A post-infarct left ventricular aneurysm, when combined with the above, is particularly hazardous. We present a case where all three conditions occurred simultaneously and describe the surgical approach undertaken to attempt correction. The patient underwent aneurysmectomy together with aortic valve replacement and two-vessel coronary artery bypass grafting. The aneurysm was excised with direct linear closure of the walls using a Teflon-butressed interrupted mattress suture technique. Post-operatively, ventricular systolic function was good (LVEF 40%) together with a well-seated aortic valve showing no paravalvular leaks. This case highlights the importance of meticulous removal of thrombus from the aneurysm and everting the edges thereby eliminating a thrombogenic surface and the risk of embolic stroke. The restorative procedure itself serves to underline the importance of ventricular shape in the effective functioning of the myocardium for sustaining an adequate stroke volume with normalized physiology.

## INTRODUCTION

A left ventricular aneurysm (LVA) is defined as a distinct area of abnormal left ventricular diastolic contour with systolic dyskinesia or paradoxical bulging, such that the left ventricular ejection fraction (LVEF) is reduced [1]. True aneurysms tend to occur with bulging of the full thickness of the left ventricular wall, whereas a false aneurysm involves a left ventricular wall rupture contained by surrounding pericardium. In 1881, LVAs were recognized to

be a consequence of coronary artery disease and 95% of true LVAs today are indeed a consequence of ischaemic heart disease [2]; however, other causes have been recognized such as trauma, Chagas disease, sarcoidosis as well as the congenital occurrences [1]. The incidence of LVA in post-infarct patients has varied between 10 and 35%, with a steady reduction in the absolute incidence following the advent of immediate revascularization following myocardial infarction [1].

Received: July 22, 2020. Revised: August 4, 2020. Accepted: August 7, 2020

Published by Oxford University Press and JSCR Publishing Ltd. All rights reserved. © The Author(s) 2020.

This is an Open Access article distributed under the terms of the Creative Commons Attribution Non-Commercial License (<http://creativecommons.org/licenses/by-nc/4.0/>), which permits non-commercial re-use, distribution, and reproduction in any medium, provided the original work is properly cited. For commercial re-use, please contact [journals.permissions@oup.com](mailto:journals.permissions@oup.com)

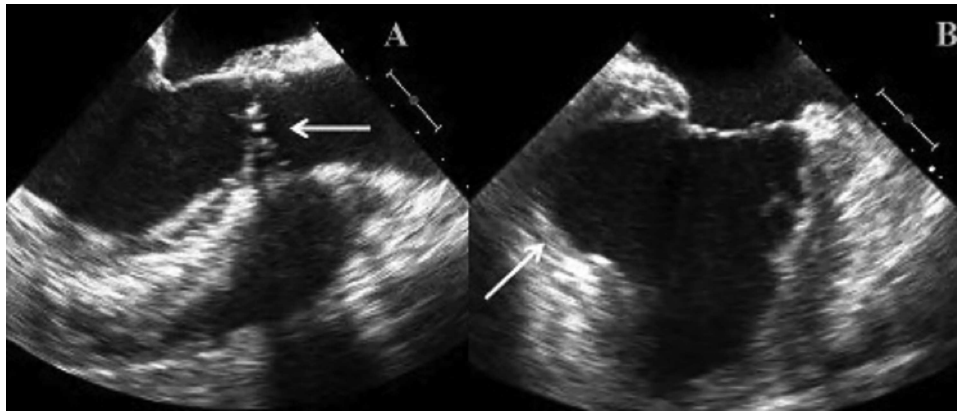


Figure 1: (A) TOE image showing bicuspid stenotic aortic valve. (B) TOE image demonstrating left ventricular apical aneurysm.

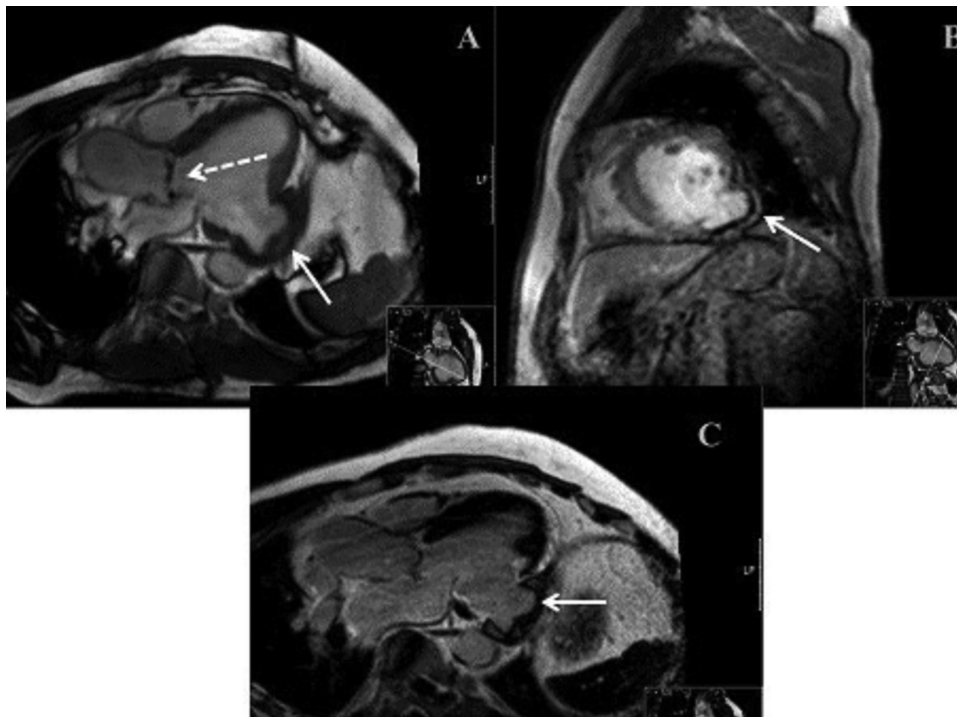
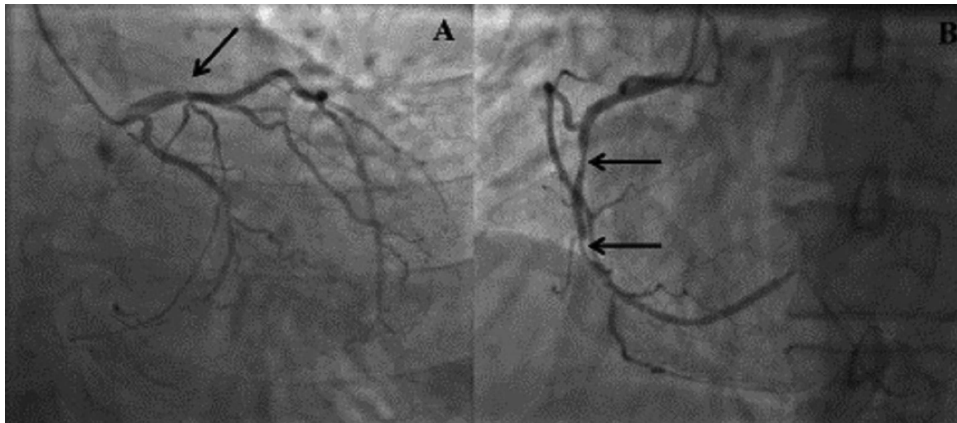


Figure 2: (A) MRI demonstrating bicuspid aortic valve (dashed arrow) and LVA (solid arrow). (B) MRI demonstrating parasagittal view of LVA. (C) MRI demonstrating mid-axial view of LVA.

The left ventricular shape has been defined as a prolate ellipsoid, with a unique architectural arrangement of the myocardial fibres; longitudinal, circumferential and oblique, the latter of which is essential to the effective clockwise and anticlockwise torsional movements during systole and diastole [3]. Pathological states such as ischaemic heart disease induce ventricular remodelling and this disrupts the oblique orientation, resulting in ventricular dilatation and increased sphericity [3]. These architectural changes herald the onset of physical myocardial changes and left ventricular compromise. True aneurysms are bound by scarred myocardium and are seen as a late complication of transmural infarcts that have undergone early expansion. The most consistent clinical manifestation in such patients is angina given that ~60% of such patients have concomitant coronary artery disease [4]. Symptomatic patients warrant the need for operative intervention over medical therapy.

## CASE REPORT

We report on a 57-year-old gentleman who initially presented with a 6-month history of heavy central chest pain, back and shoulder pain and shortness of breath on exertion (New York Heart Association Classification (NYHA) III, Canadian Cardiovascular Society Angina Classification (CCS) II). He suffered an inferior myocardial infarction in 2007 and has a known bicuspid aortic valve under follow-up. Risk factors for ischaemic heart disease include current smoking and a positive family history of heart disease on his maternal side. On admission, a transoesophageal ECHO (TOE) (Fig. 1) and cardiac magnetic resonance imaging (MRI) (Fig. 2) were carried out and demonstrated the bicuspid aortic valve with a mixed stenosis/regurgitation pattern (moderate–severe) (Fig. 1A). In addition, marked left ventricular dilatation and an inferior LVA extending from the base to the mid-cavity of the left ventricle measuring 4.5 cm across the



**Figure 3:** (A) Right anterior oblique (RAO) view demonstrating distal left anterior descending disease. (B) Left anterior oblique (LAO) view demonstrating mid right coronary artery disease.

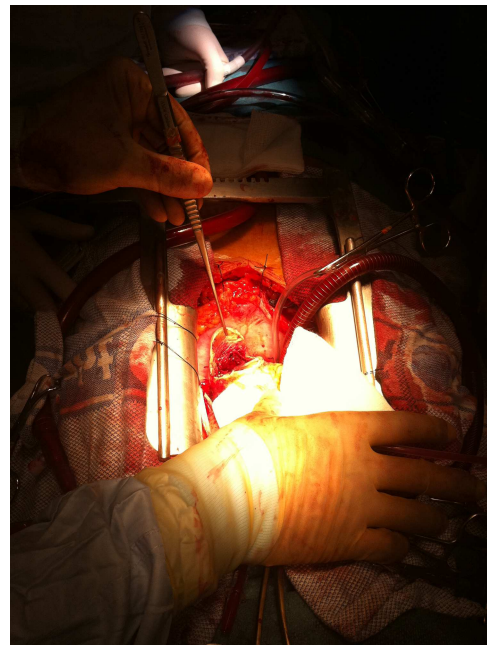
orifice (Fig. 1B) were seen. The aneurysm was thin walled, with dyskinetic motion with evidence of a dense thrombus adherent to the wall. The inferior wall was noted to be akinetic and non-viable. Preoperative LVEF was 60%. The angiogram showed stenosis of the right coronary artery (Fig. 3B) in the mid-segment together with distal left anterior descending disease (Fig. 3A).

#### Intraoperative process

The heart was elevated following application of the cross-clamp and the 5-cm posterior aneurysm opened and the thrombus within removed completely (Fig. 4). The aneurysm was excised leaving a 1-cm rim of scar tissue, which was everted, and the defect closed in a linear fashion with double-layered, Teflon-butressed, 3.0 Prolene sutures (Johnson&Johnson® Medical Devices). The heart was placed in the normal position and the left internal mammary artery was grafted to left anterior descending artery and saphenous vein graft to circumflex artery territory (obtuse marginal 1). An oblique aortotomy was performed; the stenotic aortic valve was excised, and a bioprosthesis was implanted. Post-operatively, systolic function was good together (LVEF 40%) with a well-seated aortic valve showing no paravalvular leaks. The patient was discharged home on the ninth post-operative day with dual antiplatelet therapy but no formal Coumadin-based anticoagulation as this was felt to incur too high a bleeding risk. This was a joint decision between both clinical teams and patient.

#### DISCUSSION

LVAs are rare yet important differentials to consider in patients with ischaemic type cardiac chest pain. They can present as did in this patient as straightforward cardiac symptoms, the angina type chest pain, shortness of breath with exertion, pre-syncope episodes. Furthermore, patients with a history of weakened myocardium through previous infarcts or otherwise are the category in which there will be the highest incidence of aneurysms. Moreover, given that the incidence is somewhat on the decline with the advent of the minimally invasive stenting age, one should be increasingly more vigilant for the possibilities of rarer complications. Imaging characteristics for pseudoaneurysms (false) and true aneurysms remain to be quite similar. There is a risk of ventricular arrhythmias and embolization with both types; however, the risk of rupture for pseudoaneurysms is higher than for true aneurysms. Given the fragility of the overlying pericardium in the former, this prompts



**Figure 4:** Intraoperative image demonstrating dissected LVA exposed and incised to perform intra-cavity thrombectomy.

the need for urgent surgical intervention for pseudoaneurysms, whereas true aneurysms are more effectively dealt with medically [5, 6].

Having said that, when presented with a severely symptomatic patient and the combined ambiguity that arises from imaging modalities when differentiating true from false aneurysms one would have to surgically intervene as a matter of urgency regardless of the aneurysm type. The procedure in this patient was albeit routine, however fundamental in principle as it aims to restore the distorted ventricular geometry back to its normal elliptical shape, and as such there is generally an increase in ejection fraction of ~12.5%, which continues to improve over the patient's lifetime. Owing to the nature of the case (combined presentation of aortic stenosis, LVA and coronary artery disease), the management was somewhat difficult. The LV was hypertrophied because of the increased afterload that made discerning the safely resectable aneurysm edges difficult. Ordinarily, the thin-walled, non-viable boundaries of the aneurysm are straightforward to discern but with the increased wall

thickness in this setting, dissection and division of the sac was not straightforward. Moreover, the extension of the sac inferiorly resulted in a non-viable posterior territory, hence the decision not to the graft the right coronary artery, which resulted in incomplete revascularization. Intraoperatively, the heart was not manipulated until the cross-clamp had been applied to avoid the increased risk of thromboembolism from the aneurysm. Owing to the position of the aneurysm, the heart had to be lifted and as such retrograde cardioplegia was avoided to prevent damage to the coronary sinus when the heart was lifted to the antegrade position. The procedure itself aims to remodel the ventricle back to optimal orientation, and there are many techniques used to achieve this; Dor procedure (endoventricular circular patch plasty), Cooley's linear suturing technique, surgical anterior ventricular endocardial restoration (SAVER method) and left ventricular aneurysmectomy reconstruction [5]. All procedures are different routes to achieving left ventricular geometric restoration [5].

### CONFLICT OF INTEREST STATEMENT

None declared.

### FUNDING

None.

### REFERENCES

1. Di GD, Ei LJ. Left ventricular aneurysm. In: Cohn LH, Edmunds LH Jr (eds). *Cardiac Surgery in the Adult*. New York: McGraw-Hill, 2003, 771–88.
2. Mills NL, Everson CT, Hockmuth DR. Technical advances in the treatment of left ventricular aneurysm. *Ann Thorac Surg* 1993;**55**:792.
3. Adhyapak SM, Parachuri VR. Architecture of the left ventricle: insights for optimal surgical restoration. *Heart Fail Rev* 2010;**15**:73–83.
4. Ba'albaki HA, Clements SD Jr. Left ventricular aneurysm: a review. *Clin Cardiol* 1989;**12**:5.
5. Impact of technique of left ventricular aneurysm repair on clinical outcomes: current best available evidence. *J Card Surg* 2009;**24**:319–24.
6. Brown SL, Gropler RJ, Harris KM. Distinguishing left ventricular aneurysm from pseudoaneurysm: a review of the literature. *Chest* 1997;**111**:1403–9.