

Generalisability of blood pressure lowering trials to older patients

Sheppard, James; Lown, Mark; Burt, Jenni; Temple, Eleanor; Lowe, Rebecca ; Ashby, Hannah ; Todd, Oliver; Allen, Julie ; Ford, Gary A ; Fraser, Rosalyn ; Heneghan, Carl; Hobbs, F D Richard; Jowett, Sue; Little, Paul; Mant, Jonathan; Mollison, Jill; Payne, Rupert ; Williams, Marney; Yu, Ly-Mee; McManus, Richard J.

DOI:
[10.1111/jgs.16749](https://doi.org/10.1111/jgs.16749)

License:
Creative Commons: Attribution (CC BY)

Document Version
Publisher's PDF, also known as Version of record

Citation for published version (Harvard):
Sheppard, J, Lown, M, Burt, J, Temple, E, Lowe, R, Ashby, H, Todd, O, Allen, J, Ford, GA, Fraser, R, Heneghan, C, Hobbs, FDR, Jowett, S, Little, P, Mant, J, Mollison, J, Payne, R, Williams, M, Yu, L-M & McManus, RJ 2020, 'Generalisability of blood pressure lowering trials to older patients: cross-sectional analysis', *Journal of the American Geriatrics Society*, vol. 68, no. 11, pp. 2508-2515. <https://doi.org/10.1111/jgs.16749>

[Link to publication on Research at Birmingham portal](#)

General rights

Unless a licence is specified above, all rights (including copyright and moral rights) in this document are retained by the authors and/or the copyright holders. The express permission of the copyright holder must be obtained for any use of this material other than for purposes permitted by law.

- Users may freely distribute the URL that is used to identify this publication.
- Users may download and/or print one copy of the publication from the University of Birmingham research portal for the purpose of private study or non-commercial research.
- User may use extracts from the document in line with the concept of 'fair dealing' under the Copyright, Designs and Patents Act 1988 (?)
- Users may not further distribute the material nor use it for the purposes of commercial gain.

Where a licence is displayed above, please note the terms and conditions of the licence govern your use of this document.


When citing, please reference the published version.

Take down policy

While the University of Birmingham exercises care and attention in making items available there are rare occasions when an item has been uploaded in error or has been deemed to be commercially or otherwise sensitive.

If you believe that this is the case for this document, please contact UBIRA@lists.bham.ac.uk providing details and we will remove access to the work immediately and investigate.

Generalizability of Blood Pressure Lowering Trials to Older Patients: Cross-Sectional Analysis

James P. Sheppard, PhD,*  Mark Lown, PhD,[†] Jenni Burt, PhD,[‡] Eleanor Temple, BSc,* Rebecca Lowe, BSc,* Hannah Ashby, BSc,* Oliver Todd, MBBS,[§] Julie Allen, BSc,* Gary A. Ford, FMedSci,^{||} Rosalyn Fraser, MSc,* Carl Heneghan, DPhil,* F.D. Richard Hobbs, FMedSci,* Sue Jowett, PhD,^{||} Paul Little, FMedSci,[†] Jonathan Mant, MD,** Jill Mollison, PhD,* Rupert Payne, PhD,^{††} Marney Williams, BEd,^{‡‡} Ly-Mee Yu, DPhil,* and Richard J. McManus, PhD*

See related editorial by Jeff Williamson

BACKGROUND/OBJECTIVES: Randomized controlled trials are used to inform clinical guidelines on the management of hypertension in older adults, but it is unclear to what extent these trials represent the general population attending routine clinical practice. This study aimed to define the proportion and characteristics of patients eligible for hypertension trials conducted in older people.

DESIGN: Cross-sectional study.

SETTING: A total of 24 general practices in England.

PARTICIPANTS: Anonymized electronic health record data from all individuals aged 80 and older.

MEASUREMENTS: Descriptive statistics were used to define the proportion and characteristics of patients eligible for two previous medication intensification trials (HYVET,

SPRINT) and one medication reduction trial (OPTiMISE). A logistic regression model was constructed to estimate predictors of eligibility for each trial.

RESULTS: Of 15,376 patients identified, 268 (1.7%; 95% confidence interval [CI] = 1.5–2.0%), 5,290 (34.4%; 95%CI = 33.7–35.2%), and 3,940 (25.6%; 95%CI = 24.9–26.3%) were eligible for the HYVET, SPRINT, and OPTiMISE trials, respectively. Between 5.6% and 30.7% of exclusions from each trial were due to eligibility criteria excluding those with high or uncontrolled blood pressure. Frailty (odds ratio [OR] = .44; 95%CI = .36–.54 [OPTiMISE]), cardiovascular polypharmacy (OR = .61; 95%CI = .55–.68 [SPRINT]) and multimorbidity (OR = .72; 95%CI = .64–.82 [SPRINT]) were associated with a lower likelihood of being eligible for one or more of the trials.

CONCLUSION: A possible unintended consequence of blood pressure criteria used by trials attempting to answer different primary questions is that for many older patients, no trial evidence exists to inform treatment decisions in routine practice. Caution should be exercised when applying results from existing trials to patients with frailty or multimorbidity. *J Am Geriatr Soc* 00:1-8, 2020.

Keywords: hypertension; cardiovascular disease; frailty; electronic health records; randomized controlled trials

From the *Nuffield Department of Primary Care Health Sciences, University of Oxford, Oxford, UK; [†]Primary Care Population Sciences and Medical Education Unit, Faculty of Medicine, University of Southampton, Southampton, UK; [‡]The Healthcare Improvement Studies Institute, University of Cambridge, Cambridge, UK; [§]Academic Unit of Elderly Care and Rehabilitation, University of Leeds, Leeds, UK; ^{||}Radcliffe Department of Medicine, University of Oxford, Oxford, UK; ^{||}Institute of Applied Health Research, University of Birmingham, Birmingham, UK; **Primary Care Unit, Department of Public Health and Primary Care, University of Cambridge, Cambridge, UK; ^{††}Centre for Academic Primary Care, University of Bristol, Bristol, UK; and the ^{‡‡}Patient and Public Involvement Representative, London, UK.

Address correspondence to Mark Lown, PhD, Primary Care and Population Sciences, Faculty of Medicine, University of Southampton, Aldermoor Health Centre, Aldermoor Close, Southampton, SO16 5ST, UK. E-mail: m.lown@soton.ac.uk

Part of these data were presented at these scientific meetings: Australia Association for Academic Primary Care, oral presentation, Adelaide, July 2019; European Society of Cardiology, poster presentation, Paris, August 2019; and North American Primary Care Research Group, poster presentation, Toronto 2019; All conference attendees were funded by the National Institute for Health Research School for Primary Care Research.

DOI: 10.1111/jgs.16749

Hypertension is a major modifiable risk factor for cardiovascular disease (CVD),¹ and an individual's risk of a cardiovascular event can be significantly reduced with treatment to lower blood pressure.² In older individuals aged 80 and older, previous trials showed benefit with treatment,^{3,4} although meta-analyses of these and other

trials indicated that larger blood pressure reductions and multiple antihypertensive prescriptions may also be harmful.^{5,6} Observational studies also suggested that blood pressure lowering in older patients may be harmful, particularly in patients with frailty and multimorbidity, increasing the risk of falls,⁷ acute kidney injury,⁸ and death.^{9,10}

The two largest trials that have examined the efficacy of antihypertensive treatment in patients aged 80 and older are the Hypertension in the Very Elderly Trial (HYVET)³ and the Systolic Blood Pressure Intervention Trial (SPRINT).⁴ HYVET showed in patients with a baseline systolic blood pressure of 160 mm Hg and higher that blood pressure lowering to a target of 150 mm Hg systolic reduces the risk of CVD, heart failure, and death from any cause.³ The SPRINT trial showed that in patients with a baseline systolic blood pressure of 130 mm Hg and higher, systolic blood pressure lowering to 120 mm Hg (defined using automated and mostly unaccompanied measurement methods) reduced the risk of CVD and death,⁴ and this effect was sustained in a subgroup of participants aged 80 and older, although not in those with reduced cognitive function.¹¹

However, it is unclear to what extent these results apply to older patients in routine practice,^{12,13} particularly with population-wide observational data suggesting treatment may be harmful.⁷⁻⁹ Indeed, patients in the HYVET trial are thought to have had fewer comorbidities,¹⁴ whereas it is unclear to what extent the levels of frailty observed in the SPRINT population¹⁵ compared with those in the general populations of Europe and North America.^{16,17}

The 2018 Optimizing Treatment for Mild Systolic Hypertension in the Elderly (OPTiMISE) trial examined the safety of reducing blood pressure medications in older patients with controlled systolic blood pressure (<150 mm Hg).¹⁸ The rationale for OPTiMISE was that patients with frailty and multimorbidity are not well represented in previous blood pressure lowering trials and may in fact benefit from fewer treatments, due to a reduction in adverse events from polypharmacy.^{19,20} The present study aimed to examine this rationale by (1) determining the proportion of patients registered at a primary care practice who would be eligible for each of the HYVET, SPRINT, and OPTiMISE trials; (2) establishing what patient characteristics are associated with being eligible, and (3) comparing the characteristics of patients in the participating practices who would have been eligible for the trials with those actually enrolled in each trial.

METHODS

Detailed methods are given in the Supplementary Methods S1 (Supplementary Appendix).

Study Design

This study used a cross-sectional design, utilizing anonymized data extracted from the medical records of patients registered at general practices enrolled in the OPTiMISE trial.¹⁸ Data were extracted between September 2017 and October 2018 using Egton Medical Information Systems (EMIS) search and reporting software (Egton Medical Information Systems Health, Leeds, UK). The study was approved by a National Health Service Research Ethics

Committee (South Central-Oxford A; ref 16/SC/0628). Because data were fully anonymized, no individual patient consent was required.

Population

Eligible patient data were those from individuals aged 80 and older and registered at English general practices hosting the OPTiMISE trial. General practices had to be using the EMIS electronic health record system and agree to anonymized patient data being extracted for the study.

Study Outcomes

The primary outcome for the study was the proportion of patients in the participating practices who would have been eligible for the HYVET, SPRINT, and OPTiMISE trials. These trials were chosen because they represent the largest trials conducted to date examining hypertension management strategies (both prescribing and deprescribing) in older adults. Secondary outcomes were to describe the characteristics of eligible patients, to determine the proportion of individuals excluded by each eligibility criteria, and to identify independent predictors of eligibility. The characteristics of those eligible in the participating practices were compared with those enrolled in each trial. Patients were classified as eligible if they fulfilled the published inclusion and exclusion criteria for each trial (Table 1). Due to the use of data from electronic health records, it was not possible to apply some eligibility criteria to the sample population (Supplementary Table S1).

Covariates

Data relating to baseline patient characteristics (age, sex, smoking status, and body mass index [BMI]), blood pressure, cholesterol, comorbidities, and details of all prescribed cardiovascular medications were extracted. A frailty index (FI) was developed retrospectively from 26 available deficits. Frailty was categorized using the thresholds reported in the SPRINT trial: fit (FI <.1), less fit (FI .1-.21), and frail (FI >.21). Cardiovascular polypharmacy was defined as being prescribed three or more medications for cardiovascular conditions (eg, antihypertensive, statin, antiplatelet, or diabetic medications).

To examine predictors of eligibility for each trial, missing data for blood pressure and BMI were assumed missing at random and imputed using multiple imputation with chained equations.²¹ Data on the characteristics of patients actually enrolled in each trial were extracted from previous publications (HYVET, SPRINT)^{3,11} or obtained from the original trial data set (OPTiMISE).¹⁸

Main Analyses

Descriptive statistics were used to define the primary outcome, the characteristics of eligible patients, and the proportion of patients excluded by each eligibility criteria. To better understand the phenotype of patients eligible for each trial, a logistic regression model was constructed to examine predictors of eligibility for each trial, with general practice (site) included as a random effect. Candidate predictors for each

Table 1. Eligibility Criteria for Each Trial^a

Covariate	Eligibility criteria applied		
	HYVET trial	SPRINT trial (older subgroup)	OPTiMISE trial
Age, y	≥80	≥80	≥80
Sex	Male and female	Male and female	Male and female
Systolic blood pressure	160–199 mmHg	130–180 mm Hg (0–1 meds), or 130–170 mm Hg (2 meds), or 130–160 mm Hg (3 meds), or 130–150 mm Hg (4 meds)	<150 mm Hg (≥2 meds)
Diastolic blood pressure	<110 mm Hg		
Serum creatinine	<150 μmol/L		
Dementia, secondary hypertension, terminal illness	Exclude	Exclude	Exclude
Angina, IHD, ACS, VHD		Exclude (if occurred in past 3 mo)	
Stroke or TIA		Exclude	Exclude (if occurred in past 12 mo)
Diabetes mellitus, type II, proteinuria, PKD, glomerulonephritis, organ transplant		Exclude	
Heart failure	Exclude (congestive heart failure with a diuretic or ACEi)	Exclude (if occurred in past 6 mo)	
Malignant hypertension	Exclude		Exclude
Left ventricular dysfunction			Exclude (if only on ACEis/ARBs and/or beta-blockers and/or spironolactone)
Myocardial infarction		Exclude (if occurred in past 3 mo)	Exclude (if occurred in past 12 mo)
Orthostatic hypotension		Exclude (standing SBP <110 mm Hg)	
Alcohol or drug abuse	Exclude	Exclude (if occurred in past 12 mo)	
In nursing home	Exclude	Exclude	
Unintentional weight loss		Exclude (if occurred in past 6 mo)	

Abbreviations: ACEi, angiotensin-converting enzyme inhibitor; ACS, acute coronary syndrome; ARB, angiotensin receptor blocker; HYVET, Hypertension in the Very Elderly Trial; IHD, ischemic heart disease; OPTiMISE, Optimizing Treatment for Mild Systolic Hypertension in the Elderly [trial]; PKD, polycystic kidney disease; SBP, systolic blood pressure; SPRINT, Systolic Blood Pressure Intervention Trial; TIA, transient ischemic attack; VHD, valvular heart disease.

^aApplied to data from electronic health records in this analysis.

model were prespecified as age, sex, blood pressure, BMI, frailty, number of comorbidities, number of cardiovascular medications, history of hypertension, chronic kidney disease, diabetes mellitus, type II, myocardial infarction, stroke (or transient ischemic attack), and heart failure or coronary artery bypass graft. Comparisons between the characteristics of eligible patients and those included in the original trials were made using independent samples *t* tests and two sample tests of proportions. Bonferroni correction was used to account for multiple comparisons.

Sensitivity Analyses

The definition of clinic blood pressure (most recently recorded reading) was examined in sensitivity analyses where

the blood pressure eligibility criteria for each trial were defined according to the mean of the last three readings documented in the medical records. Further analyses examined the proportion of patients with hypertension (defined by a coded diagnosis or prescription of antihypertensive therapy) who would have been eligible for each trial. For logistic regression models examining predictors of eligibility, sensitivity analyses were undertaken based on complete cases only, to establish the impact of using multiple imputations to deal with missing data. Further sensitivity analyses were undertaken on complete cases using a standard logistic regression model with backward stepwise selection of candidate predictors, with the significance level for inclusion set to $P < .05$. All analyses were conducted using STATA v.14.1 (Special Edition, StataCorp, College Station, TX).

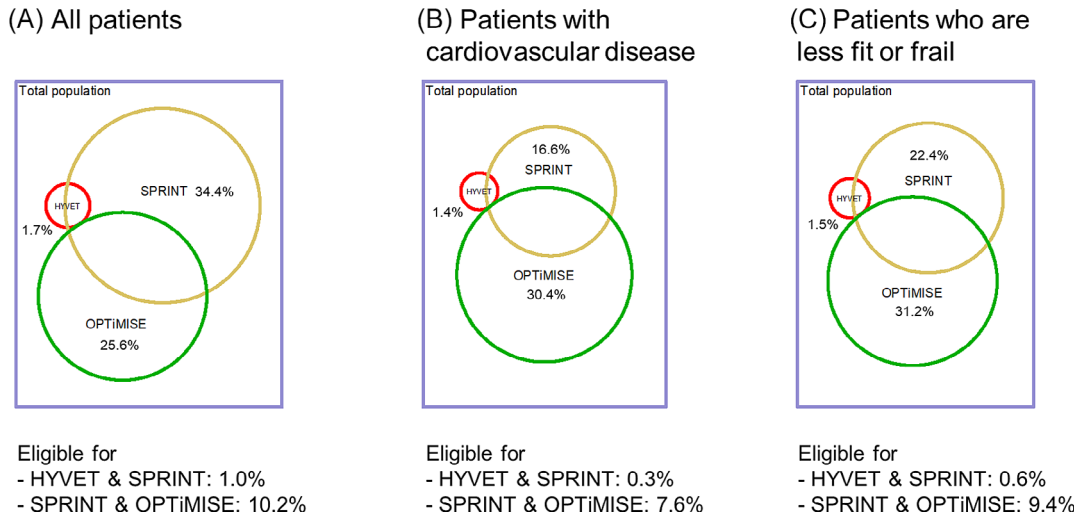


Figure 1. Proportion of patients eligible for each trial in the total population, those with cardiovascular disease and frailty. [Color figure can be viewed at wileyonlinelibrary.com]

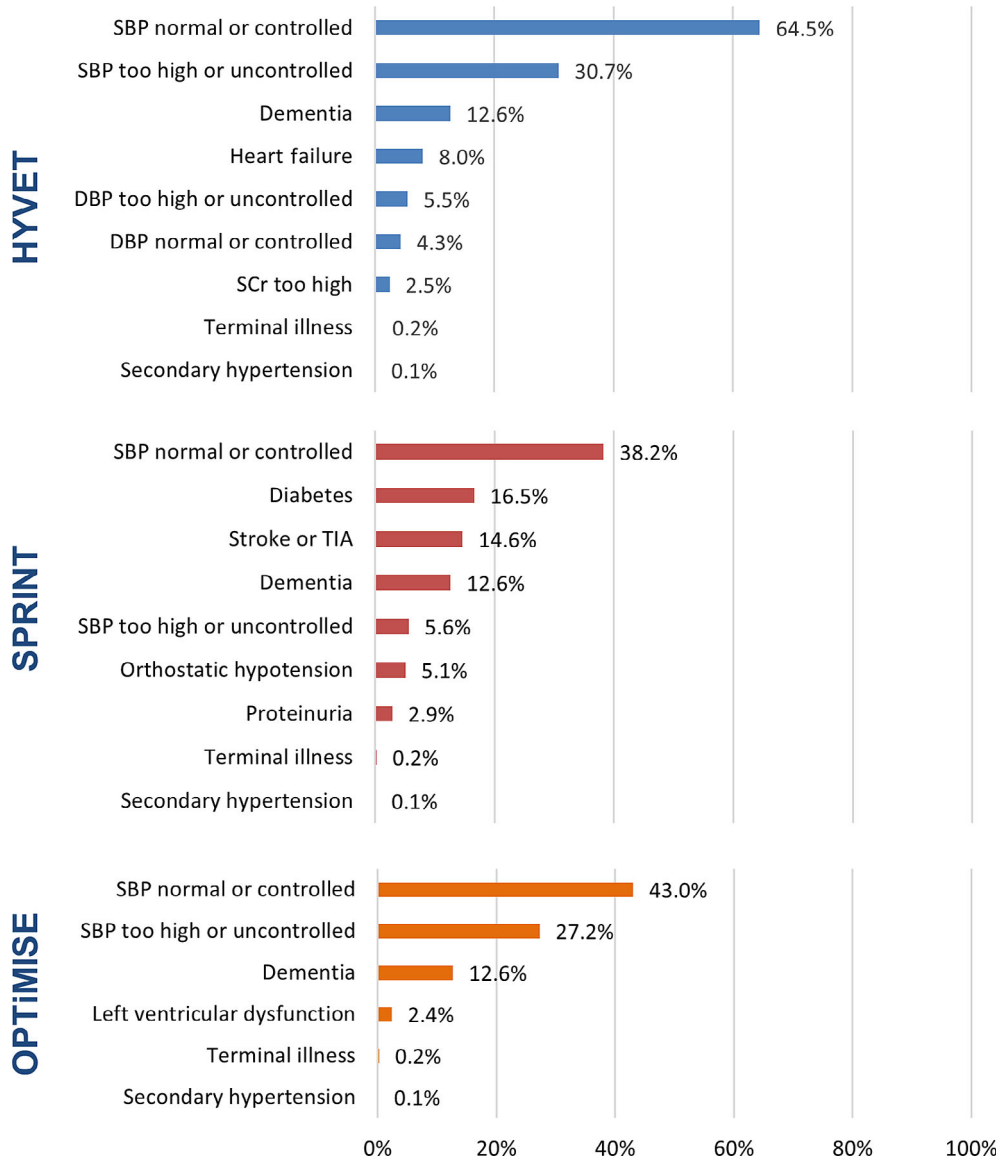


Figure 2. Proportion of patients excluded by each eligibility criteria (n = 15,376). DBP, diastolic blood pressure; SBP, systolic blood pressure; SCr, serum creatinine; TIA, transient ischemic attack.

RESULTS

Primary Results

Overall, 24 of 69 general practices participating in the OPTiMISE trial were using EMIS Health software and agreed to provide data for this study. A total of 15,376 patients aged 80 and older were registered at these practices. Approximately 268 (1.7%; 95% confidence interval [CI] = 1.5–2.0%), 5,290 (34.4%; 95% CI = 33.7–35.2%), and 3,940 (25.6%; 95% CI = 24.9–26.3%) patients would have been eligible for the HYVET, SPRINT, and OPTiMISE trials, respectively (Figure 1). No patients were eligible for both HYVET and OPTiMISE trials due to mutually exclusive blood pressure eligibility criteria, but there was some overlap in eligibility for HYVET and SPRINT, and SPRINT and OPTiMISE (Figure 1). Having normal or controlled systolic blood pressure was the most common reason for exclusion from each trial, but up to one-third of patients with high or uncontrolled blood pressure were also ineligible (HYVET = 30.7%; SPRINT = 5.6%; OPTiMISE = 27.2%). Diagnosis of dementia (12.6%), diabetes mellitus, type II (16.5% [SPRINT

only]), or stroke (14.6% [SPRINT only]) were other common reasons for exclusion (Figure 2).

Sensitivity analyses examining blood pressure defined as the mean of the last three recorded readings identified similar proportions of patients eligible for each trial (data available from authors). Similar proportions of patients were eligible for each trial when the population was limited to those with a previous diagnosis of hypertension, with the exception of OPTiMISE that had more eligible hypertensive patients (35.0%; 95% CI = 34.1–35.9%).

Characteristics of Eligible Patients

Patients eligible for each trial were similar in age and BMI, but they had different levels of mean systolic blood pressure (169 ± 9 mm Hg [HYVET]; 141 ± 10 mm Hg [SPRINT]; 131 ± 12 [OPTiMISE]; 132 ± 16 mm Hg [general population]), reflecting the different entry criteria. Patients eligible for the HYVET and SPRINT trials had less frailty and multimorbidity than those eligible for OPTiMISE (Table 2 and Supplementary Table S3). The proportion of cardiovascular

Table 2. Characteristics of Patients Eligible and Enrolled to Each Trial

Characteristic	HYVET trial			SPRINT trial			OPTiMISE trial		
	Eligible population	Reported population ³	P value ^a	Eligible population	Reported population ¹¹	P value ^a	Eligible population	Reported population ¹⁸	P value ^a
Patient characteristics									
Total population	268	3,845	—	5,290	1,167	—	3,940	569	—
Age, y	85.6	83.6	< .001	85.0	83.5	< .001	84.8	84.8	1.000
Sex, % female	67.2	60.5	.097	61.5	38.7	< .001	58.0	51.5	.003
SBP, mm Hg	169.3	173.0	< .001	141.2	142.5	< .001	130.8	130.0	.134
DBP, mm Hg	81.2	90.8	< .001	75.6	70.0	< .001	71	69.3	< .001
BMI, kg/m ²	26.6	24.7	< .001	26.4	27.1	< .001	27.7	27.6	.725
Frailty score: fit, %	50.8	—	—	63.2	—	—	31.0	22.3	< .001
Frailty score: less fit, %	42.2	—	—	33.9	—	—	55.3	59.9	.038
Frailty score: frail, %	7.1	—	—	2.9	—	—	13.7	17.8	.008
Electronic frailty index, median	.09	.16	—	.09	—	—	.13	.14	—
Medical history, %									
Hypertension	65.7	89.9	< .001	59.8	—	—	89.4	96.1	< .001
Myocardial infarction	8.2	3.1	< .001	4.4	—	—	10.1	7.0	.019
Stroke/TIA	11.9	6.8	.001	.0	.0	—	13.0	7.9	< .001
CVD	28.0	11.8	< .001	17.3	27.2	< .001	42.4	30.4	< .001
Diabetes mellitus, type II	14.6	6.8	< .001	.0	.0	—	23.0	17.8	.005
CKD	25.0	—	—	22.5	50.6	< .001	36.8	32.7	.057
Prescribed medications, %									
Antihypertensive	62.7	64.7	.508	61.4	—	—	100.0	100.0	1.00
Statin	33.6	—	—	32.1	50.7	< .001	61.0	33.2	< .001
Antiplatelet	25.4	—	—	15.8	60.2	< .001	31.8	19.5	< .001

Abbreviations: BMI, body mass index; CKD, chronic kidney disease; CVD, cardiovascular disease; DBP, diastolic blood pressure; HYVET, Hypertension in the Very Elderly Trial; OPTiMISE, Optimizing Treatment for Mild Systolic Hypertension in the Elderly [trial]; SBP, systolic blood pressure; SPRINT, Systolic Blood Pressure Intervention Trial; TIA, transient ischemic attack.

^aData relating to the reported populations were extracted from previous publications (HYVET, SPRINT)^{3,11} or obtained from the original trial data set (OPTiMISE).¹⁸ Comparisons were made using independent samples *t* tests and two sample tests of proportions. Standard deviations required for this analysis are taken from the variance reported in the intervention arms of the original HYVET and SPRINT trials, giving conservative estimates of the difference between groups. Bonferoni correction for significance level was *P* < .002.

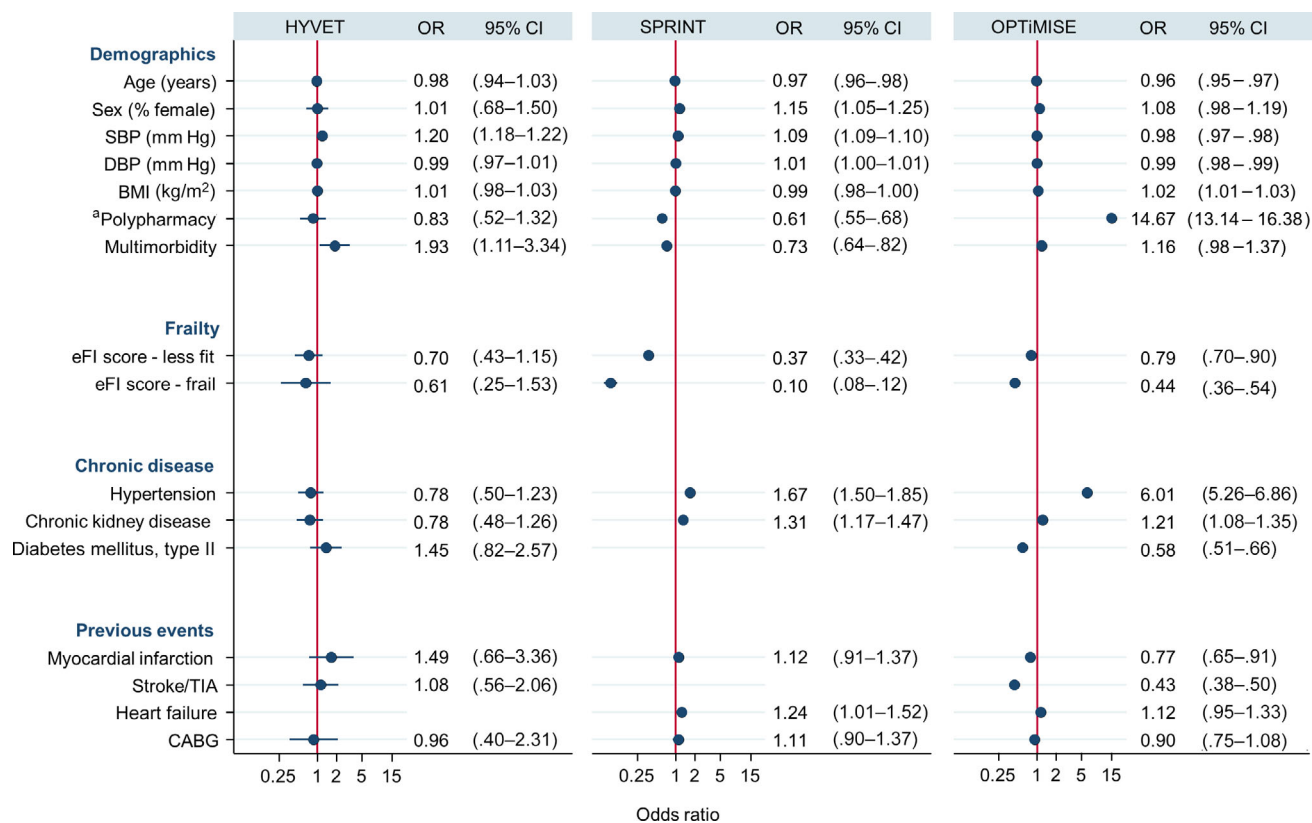


Figure 3. Coefficient plot showing results of logistic regression analysis examining predictors of eligibility for each trial ($n = 15,376$). ^aPolypharmacy defined as being prescribed three or more cardiovascular medications. BMI, body mass index; CABG, coronary artery bypass graft; CI, confidence interval; DBP, diastolic blood pressure; eFI, electronic frailty index; OR, odds ratio; SBP, systolic blood pressure; TIA, transient ischemic attack. [Color figure can be viewed at wileyonlinelibrary.com]

morbidities varied across trials, and the mean number of cardiovascular medications was highest in patients eligible for the OPTiMISE trial (Table 2 and Supplementary Table S3).

Predictors of Eligibility

Patients with higher systolic blood pressure were more likely to be eligible for the HYVET and SPRINT trials (odds ratio [OR] = 1.20; 95% CI = 1.18–1.22 [HYVET]; OR = 1.09; 95% CI = 1.09–1.10 [SPRINT]) but less likely to be eligible for OPTiMISE (OR = .98; 95% CI = .97–.98), again reflecting the opposing eligibility criteria for these trials (Figure 3). Having frailty was associated with a lower likelihood of being eligible for all trials (OR = .66; 95% CI = .53–1.37 [HYVET]; OR = .09; 95% CI = .08–.12 [SPRINT]; and OR = .44; 95% CI = .36–.54 [OPTiMISE]). The presence of cardiovascular polypharmacy and multimorbidity were associated with lower odds of being eligible for the SPRINT trial (OR = .61; 95% CI = .55–.68 [polypharmacy]; OR = .72; 95% CI = .64–.82 [multimorbidity]) but higher odds of being eligible for the OPTiMISE trial (OR = 14.67; 95% CI = 3.14–16.38 [polypharmacy]; OR = 1.16; 95% CI = .97–1.37 [multimorbidity]). Results were similar in sensitivity analyses examining complete cases only (Supplementary Figure S1). Analyses using backward stepwise selection identified systolic blood pressure and reduced frailty as factors predicting eligibility across all three trials (Supplementary Figure S2).

Eligible Patients Compared with Recruited Patients

Significant differences were found between those deemed eligible in the present study and those recruited to each individual trial (Supplementary Table S3). Patients enrolled in the HYVET trial were on average younger, with higher blood pressure, lower BMI, and fewer cardiovascular morbidities compared with the eligible population in the practices considered ($P < .002$). Patients in the SPRINT trial were also younger, had lower diastolic blood pressure but higher systolic blood pressure, BMI, and more cardiovascular morbidities and treatment ($P < .001$). Participants in the OPTiMISE trial had lower diastolic blood pressure, and fewer had a history of stroke, CVD, or prescriptions for statin and antiplatelet therapy than the total population that would have been eligible ($P < .001$; Supplementary Table S3).

DISCUSSION

Summary of Main Findings

This study examined the characteristics of 15,376 patients aged 80 and older registered in 24 general practices in England. We found that most patients would not have been eligible for randomized controlled trials that inform clinical guidelines^{22–25} on the management of hypertension. Most of the ineligibility related to the differing blood pressure eligibility criteria used by trials attempting to answer different primary questions, with up to a one-third of individuals with

high or uncontrolled blood pressure excluded. This is perhaps not surprising. However, a possible unintended consequence of these criteria was that eligible patients were less likely to be frail and more likely to be prescribed multiple cardiovascular medications or have multimorbidity. Therefore, for many older patients, no randomized controlled trials exist to directly inform treatment decisions in routine practice.

Strengths and Weaknesses

This study examined data from a large sample of more than 15,000 patients registered to general practices across the south-central region of England. Individuals were representative of the region and country in terms of age but may not be reflective of practices in other parts of the country that serve populations differing in ethnicity and social deprivation.²⁶ It is also possible that some selection bias may have been present because only 24 of 69 practices approached were able to participate.

The eligibility criteria that accounted for the largest number of exclusions were those related to having high or low systolic blood pressure. Our definition of systolic blood pressure, based on the most recently recorded value, almost certainly differs from the standardized readings taken in the original trials.²⁷ However, readings reflected routine practice, and the same definition was used for each trial, and so comparisons between trials are still likely to be valid.

Our analyses were unable to consider the proportion of eligible individuals who would likely give informed consent to participate in each trial or the proportion deemed in clinical equipoise by the treating physician. Indeed, in the OPTiMISE trial, as few as 9% of those deemed potentially eligible on the basis of information held in electronic health records gave informed consent and were randomized, suggesting that these estimates are likely to be conservative. Data presented in Table 2 suggest the decision to participate may have been influenced by patient characteristics such as sex, frailty, multimorbidity, and treatment prescription. It was not possible to examine the association between ethnicity and trial eligibility due to large amounts of missing data in the electronic health records for this patient characteristic.

Derivation of the FI was post hoc, and therefore some of the deficits described in previous models were not extracted from individual electronic health records.²⁸ Of the 26 deficits available, each of the five domains that make up a valid cumulative deficit frailty model were covered: signs, symptoms, disease, disability, and abnormal laboratory results.²⁹ We therefore consider our frailty model to be valid. Models used to define frailty in each of the previous trials examined here were also derived post hoc and included a wide variety of deficits (Supplementary Table S2).^{15,28,30} The current analysis offered a unique opportunity to estimate frailty and compare across trial-eligible populations using a consistent definition.

Comparison with Previous Literature

A study from the Netherlands found that in a population of patients attending a geriatric day clinic, less than one-half would have been eligible for the HYVET trial, and those eligible would have had significantly fewer comorbidities.¹⁴

The present study found of those older patients attending routine primary care, fewer than 2% fulfilled the eligibility criteria for HYVET, although those that were eligible had comparable multimorbidity. Furthermore, our finding that 34.4% of older patients would have been eligible for the SPRINT trial was very similar to that of Bress et al.,³¹ who examined patients from the National Health and Nutrition Examination Survey database and found 34.6% of patients aged 75 and older would have been eligible for the trial.

The present study found that eligible populations differed significantly from those who participated in the original trials. This accentuated the differences between eligible patients and the general population. Participating patients had higher blood pressure and BMI but fewer comorbidities.

Implications for Clinical Practices

Clinical guidelines for the management of hypertension in older patients continue to recommend lower thresholds for treatment initiation and targets for patients already on medication.^{22,24,25} Most suggest exercising clinical judgment in patients with multimorbidity and frailty,^{23,24} and some go as far as to explicitly cite the exclusion criteria from the SPRINT trial in reference to patients where such a strategy may not be appropriate.²⁵ The present data show the extent to which clinical judgment may be required with as many as two-thirds of patients aged older than 80 not meeting the eligibility criteria for previous trials.

Further work is needed to better understand if differences between recruited trial participants and the general population are important in determining the safety and efficacy of treatments. Ultimately, it is not feasible to conduct randomized controlled trials in all populations, but attempts should be made to better capture patients from underrepresented groups (such as those with frailty and multimorbidity) in future trials. One approach might be to consider the use of specific inclusion/exclusion criteria designed to maximize the number of patients with frailty and multimorbidity eligible.

In conclusion, the present study found that most patients aged older than 80 would not have been eligible for large randomized controlled trials examining hypertension management strategies in older adults, albeit mainly due to differing blood pressure control thresholds. Therefore, for many older patients, no randomized controlled trials exist that directly inform treatment decisions in routine practice, and so caution should be exercised when using existing data in older patients with frailty or multimorbidity.

ACKNOWLEDGMENTS

We acknowledge the support of the Primary Care Clinical Trials Unit, staff from the National Institute for Health Research Thames Valley and South Midlands and Wessex Clinical Research Network, and all of the practices contributing data to this study.

Financial Disclosure: This work received joint funding from the National Institute for Health Research (NIHR) Oxford Collaboration for Leadership in Applied Health Research and Care (CLAHRC) at Oxford Health National Health Service (NHS) Foundation Trust (reference P2-501) and the NIHR School for Primary Care Research (SPCR);

reference 335). James Sheppard and Richard J. McManus were funded by an NIHR professorship (NIHR-RP-R2-12-015). James Sheppard now receives funding from the Wellcome Trust/Royal Society via a Sir Henry Dale Fellowship (reference 211182/Z/18/Z) and an NIHR Oxford Biomedical Research Centre (BRC) Senior Fellowship. Richard J. McManus, Jonathan Mant, Carl Heneghan, and Gary A. Ford are supported by NIHR Senior Investigator awards. Carl Heneghan also receives support from the NIHR SPCR and NIHR Oxford BRC. F.D. Richard Hobbs acknowledges part support from the NIHR SPCR, the NIHR CLAHRC Oxford, and the NIHR Oxford BRC. Oliver Todd is funded by a Dunhill Medical Trust doctoral research fellowship (reference RTF107/0117). Rupert Payne receives funding from the NIHR for polypharmacy and medicines optimization research. The views expressed are those of the author(s) and not necessarily those of the NIHR or the Department of Health and Social Care.

Conflict of Interest: Gary A. Ford has received personal payment for advisory and educational work from Amgen, Daiichi Sankyo, Medtronic, Pfizer, and Stryker. All other authors have declared no conflicts of interest for this article.

Author Contributions: Conceived, designed, and secured funding for the study: Sheppard and McManus with Burt, Lown, Ford, Heneghan, Hobbs, Jowett, Little, Mant, Payne, Williams, and Yu. Study manager: Temple. Wrote the first draft: Sheppard. All authors reviewed and edited the manuscript. James Sheppard and Richard J. McManus are co-chief investigators and will act as guarantors for this work.

Sponsor's Role: The sponsor for this study (University of Oxford) had no role in the design and conduct of the study; collection, management, analysis, and interpretation of the data; preparation, review, or approval of the manuscript; and decision to submit the manuscript for publication.

REFERENCES

- Lewington S, Clarke R, Qizilbash N, Peto R, Collins R. Age-specific relevance of usual blood pressure to vascular mortality: a meta-analysis of individual data for one million adults in 61 prospective studies. *Lancet*. 2002; 360(9349):1903-1913.
- Etehad D, Emdin CA, Kiran A, et al. Blood pressure lowering for prevention of cardiovascular disease and death: a systematic review and meta-analysis. *Lancet*. 2016;387(10022):957-967.
- Beckett NS, Peters R, Fletcher AE, et al. Treatment of hypertension in patients 80 years of age or older. *N Engl J Med*. 2008;358(18):1887-1898.
- SPRINT Investigators. A randomized trial of intensive versus standard blood-pressure control. *N Engl J Med*. 2015;373(22):2103-2116.
- Bejan-Angoulvant T, Saadatian-Elahi M, Wright JM, et al. Treatment of hypertension in patients 80 years and older: the lower the better? A meta-analysis of randomized controlled trials. *J Hypertens*. 2010;28(7): 1366-1372.
- Thomopoulos C, Parati G, Zanchetti A. Effects of blood pressure-lowering treatment on cardiovascular outcomes and mortality: 13 - benefits and adverse events in older and younger patients with hypertension: overview, meta-analyses and meta-regression analyses of randomized trials. *J Hypertens*. 2018;36(8):1622-1636.
- Tinetti ME, Han L, Lee DS, et al. Antihypertensive medications and serious fall injuries in a nationally representative sample of older adults. *JAMA Intern Med*. 2014;174(4):588-595.
- Mansfield KE, Nitsch D, Smeeth L, Bhaskaran K, Tomlinson LA. Prescription of renin-angiotensin system blockers and risk of acute kidney injury: a population-based cohort study. *BMJ Open*. 2016;6(12):e012690.
- Benetos A, Labat C, Rossignol P, et al. Treatment with multiple blood pressure medications, achieved blood pressure, and mortality in older nursing home residents: the PARTAGE study. *JAMA Intern Med*. 2015;175(6): 989-995.

- Todd OM, Wilkinson C, Hale M, et al. Is the association between blood pressure and mortality in older adults different with frailty? A systematic review and meta-analysis. *Age Ageing*. 2019;48(5):627-635.
- Pajewski NM, Berlowitz DR, Bress AP, et al. Intensive vs standard blood pressure control in adults 80 years or older: a secondary analysis of the systolic blood pressure intervention trial. *J Am Geriatr Soc*. 2020;68(3):496-504.
- Rothwell PM. External validity of randomised controlled trials: "to whom do the results of this trial apply?". *Lancet*. 2005;365(9453):82-93.
- Supiano MA, Williamson JD. Applying the systolic blood pressure intervention trial results to older adults. *J Am Geriatr Soc*. 2017;65(1):16-21.
- Tulner LR, Kuper IM, van Campen JP, et al. Treatment of hypertension in an elderly outpatient population in The Netherlands. *Am J Geriatr Pharmacother*. 2009;7(4):204-209.
- Pajewski NM, Williamson JD, Applegate WB, et al. Characterizing frailty status in the systolic blood pressure intervention trial. *J Gerontol A Biol Sci Med Sci*. 2016;71(5):649-655.
- Kulminski A, Yashin A, Ukraintseva S, et al. Accumulation of health disorders as a systemic measure of aging: findings from the NLTC data. *Mech Ageing Dev*. 2006;127(11):840-848.
- Romero-Ortuno R, Kenny RA. The frailty index in Europeans: association with age and mortality. *Age Ageing*. 2012;41(5):684-689.
- Sheppard JP, Burt J, Lown M, et al. OPTimising Treatment for Mild Systolic hypertension in the Elderly (OPTiMISE): protocol for a randomised controlled non-inferiority trial. *BMJ Open*. 2018;8(9):e022930.
- Bradley MC, Motterlini N, Padmanabhan S, et al. Potentially inappropriate prescribing among older people in the United Kingdom. *BMC Geriatr*. 2014; 14:72.
- Sato I, Akazawa M. Polypharmacy and adverse drug reactions in Japanese elderly taking antihypertensives: a retrospective database study. *Drug Healthc Patient Saf*. 2013;5:143-150.
- Sterne JAC, White IR, Carlin JB, et al. Multiple imputation for missing data in epidemiological and clinical research: potential and pitfalls. *BMJ*. 2009; 338:b2393.
- Whelton PK, Carey RM, Aronow WS, et al. 2017 ACC/AHA/AAPA/ABC/ACPM/AGS/APhA/ASH/ASPC/NMA/PCNA guideline for the prevention, detection, evaluation, and management of high blood pressure in adults: a report of the American College of Cardiology/American Heart Association Task Force on clinical practice guidelines. *J Am Coll Cardiol*. 2017;71(19):2199-2269.
- National Guideline Centre. National Institute for Health and Care Excellence. Hypertension in Adults: Diagnosis and Management [NICE Guideline 136]. London, UK: Royal College of Physicians; 2019.
- Williams B, Mancia G, Spiering W, et al. 2018 ESC/ESH guidelines for the management of arterial hypertension. *Eur Heart J*. 2018;39(33):3021-3104.
- Nerenberg KA, Zarnke KB, Leung AA, et al. Hypertension Canada's 2018 guidelines for diagnosis, risk assessment, prevention, and treatment of hypertension in adults and children. *Can J Cardiol*. 2018;34(5):506-525.
- Public Health England. National General Practice Profiles. 2018. <https://fingertips.phe.org.uk/profile/general-practice>. Accessed May 21, 2019.
- Johnson KC, Whelton PK, Cushman WC, et al. Blood pressure measurement in SPRINT (systolic blood pressure intervention trial). *Hypertension*. 2018; 71(5):848-857.
- Clegg A, Bates C, Young J, et al. Development and validation of an electronic frailty index using routine primary care electronic health record data. *Age Ageing*. 2016;45(3):353-360.
- Song X, Mititiski A, Rockwood K. Prevalence and 10-year outcomes of frailty in older adults in relation to deficit accumulation. *J Am Geriatr Soc*. 2010;58(4):681-687.
- Warwick J, Falaschetti E, Rockwood K, et al. No evidence that frailty modifies the positive impact of antihypertensive treatment in very elderly people: an investigation of the impact of frailty upon treatment effect in the HYper-tension in the Very Elderly Trial (HYVET) study, a double-blind, placebo-controlled study of antihypertensives in people with hypertension aged 80 and over. *BMC Med*. 2015;13:78.
- Bress AP, Tanner RM, Hess R, Colantonio LD, Shimbo D, Muntner P. Generalizability of SPRINT results to the U.S. adult population. *J Am Coll Cardiol*. 2016;67(5):463-472.

SUPPORTING INFORMATION

Additional Supporting Information may be found in the online version of this article.

Supplementary Appendix S1: Supporting Information.