

Measurement of the fluorescence lifetime of GFP in high refractive index levitated droplets using FLIM

Davidson, N. M.; Gallimore, P. J.; Bateman, B.; Ward, A. D.; Botchway, S. W.; Kalberer, M.; Kuimova, M. K.; Pope, F. D.

DOI:

[10.1039/C9CP06395A](https://doi.org/10.1039/C9CP06395A)

License:

Creative Commons: Attribution (CC BY)

Document Version

Publisher's PDF, also known as Version of record

Citation for published version (Harvard):

Davidson, NM, Gallimore, PJ, Bateman, B, Ward, AD, Botchway, SW, Kalberer, M, Kuimova, MK & Pope, FD 2020, 'Measurement of the fluorescence lifetime of GFP in high refractive index levitated droplets using FLIM', *Physical Chemistry Chemical Physics*, vol. 22, no. 26, pp. 14704-14711. <https://doi.org/10.1039/C9CP06395A>

[Link to publication on Research at Birmingham portal](#)

General rights

Unless a licence is specified above, all rights (including copyright and moral rights) in this document are retained by the authors and/or the copyright holders. The express permission of the copyright holder must be obtained for any use of this material other than for purposes permitted by law.

- Users may freely distribute the URL that is used to identify this publication.
- Users may download and/or print one copy of the publication from the University of Birmingham research portal for the purpose of private study or non-commercial research.
- User may use extracts from the document in line with the concept of 'fair dealing' under the Copyright, Designs and Patents Act 1988 (?)
- Users may not further distribute the material nor use it for the purposes of commercial gain.

Where a licence is displayed above, please note the terms and conditions of the licence govern your use of this document.

When citing, please reference the published version.

Take down policy

While the University of Birmingham exercises care and attention in making items available there are rare occasions when an item has been uploaded in error or has been deemed to be commercially or otherwise sensitive.

If you believe that this is the case for this document, please contact UBIRA@lists.bham.ac.uk providing details and we will remove access to the work immediately and investigate.



Cite this: *Phys. Chem. Chem. Phys.*,
2020, 22, 14704

Measurement of the fluorescence lifetime of GFP in high refractive index levitated droplets using FLIM

N. M. Davidson,^a P. J. Gallimore,^b B. Bateman,^{id c} A. D. Ward,^c S. W. Botchway,^c
M. Kalberer,^b M. K. Kuimova^{id d} and F. D. Pope^{id *a}

Green fluorescent protein (GFP) is a widely used fluorescent probe in the life sciences and biosciences due to its high quantum yield and extinction coefficient, and its ability to bind to biological systems of interest. This study measures the fluorescence lifetime of GFP in sucrose/water solutions of known molarity in order to determine the refractive index dependent lifetime of GFP. A range of refractive indices from 1.43–1.53 were probed by levitating micron sized droplets composed of water/sucrose/GFP in an optical trap under well-constrained conditions of relative humidity. This setup allows for the first reported measurements of the fluorescence lifetime of GFP at refractive indices greater than 1.46. The results obtained at refractive indices less than 1.46 show good agreement with previous studies. Further experiments that trapped droplets of deionised water containing GFP allowed the hygroscopic properties of GFP to be measured. GFP is found to be mildly hygroscopic by mass, but the high ratio of molecular masses of GFP to water (ca. 1500 : 1) signifies that water uptake is large on a per-mole basis. Hygroscopic properties are verified using brightfield microscope imaging, of GFP droplets at low and high relative humidity, by measuring the humidity dependent droplet size. In addition, this experiment allowed the refractive index of pure GFP to be estimated for the first time (1.72 ± 0.07). This work provides reference data for future experiments involving GFP, especially for those conducted in high refractive index media. The work also demonstrates that GFP can be used as a probe for aerosol studies, which require determination of the refractive index of the aerosol of any shape.

Received 26th November 2019,
Accepted 15th June 2020

DOI: 10.1039/c9cp06395a

rsc.li/pccp

1. Introduction

Green fluorescent protein (GFP) has been widely used in cellular imaging since its isolation from *Aequorea victoria* jellyfish.¹ It contains an intrinsic fluorophore which remains functional when encoded into other organisms,² therefore, it is used as a fluorescent tag for a range of proteins. GFP has been used as a fluorescent marker to determine the extent of gene expression and spatial location of proteins in cells. In recent years, Fluorescence Lifetime Imaging (FLIM) has been particularly useful for probing protein–protein interactions using GFP as a donor in Förster Resonance Energy Transfer (FRET) experiments.

As well as specific molecular interactions, the lifetime of a fluorophore may depend on other characteristics of the surrounding solution. For GFP, the solution viscosity³ has been found not to influence lifetime. However, several studies have found that lifetime varies with refractive index (n).^{4–7} This is theoretically predicted; Strickler and Berg⁸ proposed that the inverse natural lifetime of a fluorophore ($1/\tau$) scales with the square of the refractive index n^2 , see eqn (1), where n^2 is also referred to as the relative permittivity.

$$\frac{1}{\tau} \propto n^2. \quad (1)$$

Subsequent theoretical work^{9–12} suggests that other power-law relationships may be more appropriate depending on the nature of fluorophore–solvent interactions (e.g. solvent “caging”), or if constants in the Strickler–Berg equation also vary with n . To date, however, GFP lifetimes measured as a function of refractive index are consistent with eqn (1).

Across two studies, Suhling *et al.*^{3,5} measured the lifetime of GFP in bulk mixtures of water and glycerol ($n = 1.33$ – 1.46),

^a School of Geography, Earth and Environmental Sciences, University of Birmingham, Edgbaston, Birmingham, B15 2TT, UK. E-mail: f.pope@bham.ac.uk

^b Department of Chemistry, University of Cambridge, Lensfield Road, Cambridge, CB2 1EW, UK

^c Central Laser Facility, Rutherford Appleton Laboratory, Harwell, Oxford, OX11 0QX, UK

^d Department of Chemistry, Imperial College London, South Kensington Campus, London, SW7 2AZ, UK



and found good agreement with eqn (1). Similar experiments by Borst *et al.*¹³ found that related yellow and cyan fluorescent proteins show the same functional dependence on refractive index.

On this basis, GFP lifetime has been used to estimate refractive index in living cells. Tregidgo *et al.*¹ used GFP-tagged proteins to estimate $n_{\text{cell}} = 1.45$ and found that the refractive index of the medium surrounding the cells influenced lifetime, again consistent with eqn (1). Van Manen *et al.*¹¹ measured the lifetimes of GFP-tagged proteins localised to the cytosol and the cell membrane and found $n_{\text{cytosol}} = 1.38$ and $n_{\text{membrane}} = 1.46$. They also noted that GFP physisorbed to high-refractive index polystyrene beads ($n = 1.60$) had a correspondingly short lifetime.

Systematic studies of GFP lifetime at high refractive index ($n > 1.46$) have not been reported, likely due to difficulties in preparing suitable bulk aqueous solutions. However, regions of the cell which are rich in proteins, nucleic acids and lipids may possess n above this range, as high as 1.6.¹⁴ Zhang *et al.*¹⁵ recently determined the distribution of refractive index in whole cells and noted significant heterogeneity, including regions with $n > 1.50$.

In this study, we determine the fluorescent lifetime of GFP in a high refractive index environment. Lifetime studies have also been carried out in reverse micelles to study the behaviour of enclosed water pools,¹⁶ and within cells during mitosis to monitor protein concentrations at different stages of the cell cycle.¹⁷ Specifically, we employ optical trapping^{18,19} to optically levitate micron-sized sucrose/water aerosols containing GFP. Aerosols provide well constrained systems, where the thermodynamic equilibrium of the particle water content is determined by the surrounding ambient relative humidity (RH). At low RH (<30%), sucrose aerosols do not crystallise like corresponding bulk sucrose solutions, but instead form a metastable “glassy” state with a high mass fraction of sucrose and hence high refractive index.²⁰ Using Fluorescent Lifetime Imaging, we measure GFP lifetimes using over a range of RH corresponding to $n = 1.43$ – 1.53 , to test the applicability of eqn (1) to previously unexplored conditions. Earlier FLIM work illustrated the changes in GFP lifetime as a result of medium refractive index.²¹ Furthermore, since aerosol refractive index is an important parameter in determining the radiative properties of atmospheric particles,^{22,23} we demonstrate that GFP could be used to probe atmospheric aerosol refractive index in laboratory studies employing FLIM.

We also investigate optical trapping of binary GFP/water mixtures and perform imaging over a wide range of RH. This exploratory work allows us to relate changes in refractive index to particle water content, including a tentative estimate of the refractive index of “pure” GFP at low RH by extrapolation. We also observe increases in droplet size with increasing RH as a consequence of hygroscopic water uptake by the protein.

This paper provides a methodology for determining the refractive index of aerosol particles and droplets, which are relevant for atmospheric science, including air quality and climate change, and potentially other applications.

2. Methods and materials

2.1 Calculation of refractive index of sucrose/water aerosols under controlled RH conditions

The refractive index (n) and hygroscopic properties of binary sucrose/water solutions are well defined. Tong *et al.*²⁰ measured the refractive indices of a series of aqueous sucrose solutions at varying concentration and hence mass fraction of solute (MFS), as parameterised in eqn (2).

$$n = 0.071w^2 + 0.1358w + 1.3339 \quad (2)$$

where n = refractive index and w = mass fraction of solute (MFS).

This formula allows the refractive index of a sucrose solution to be calculated based upon the MFS. For sucrose/water aerosols at a given RH, the MFS can be calculated using the parameterisation of eqn (10) in Zobrist *et al.*²⁴ which is shown in eqn (3).

$$a_w(T, w) = \frac{(1 + aw)}{(1 + bw + cw^2)} + (T - T^0)(dw + ew^2 + fw^3 + gw^4). \quad (3)$$

Where a_w = water activity, $T^0 = 298.15^\circ$ K, T = experimental temperature (293.65° K in this case), w = mass fraction of solute/MFS (sucrose/water), and a, b, c, d, e, f and g are fitting constants. The small difference between T and T^0 means that only the first term in eqn (3) has a significant impact on a_w , and the equation simplifies to easily soluble quadratic equation, hence the n of an aqueous sucrose droplet can be predicted from the measured RH of the surrounding air.

2.2 Green fluorescent protein solutions

A stock solution of the ternary mixture of GFP/sucrose/water was made from solid crystalline GFP (made in house), analytical grade sucrose (Sigma Aldrich), and deionised water. The concentration of the stock solution was 0.375 M sucrose (342.3 g mol^{-1}) and 36 μM GFP (*ca.* $27\,000 \text{ g mol}^{-1}$). The molarity and mass of sucrose in solution is in large excess compared to GFP, therefore, the hygroscopicity of the generated aerosol droplets is dependent solely on the sucrose to water ratio.

It is noted, that whilst the work of Suhling *et al.* used solutions of lower GFP concentration compared to this work, their fluorescence measurements were taken from bulk solutions in cuvettes (diameter = 1 cm) as opposed to micron-sized droplets. The corresponding number of fluorophores in the cuvette experiments far exceeds those in the droplets. Hence it was necessary to use higher GFP concentrations (36 μM) in these experiments in order to generate enough photons from 4–5 μm diameter aerosol droplets to have sufficient fluorescence to measure. Lower concentration solutions (18 μM) did not produce droplets with sufficient fluorescence for imaging.

2.3 Sample delivery

GFP solutions were aerosolised by adding approximately 1.5 ml of stock solution to the reservoir of an Aerosonic Travel Nebulizer



(Schill Medical). Droplets were carried into the trapping chamber *via* a modified Aerochamber Plus spacer (Trudell Medical International) to reduce droplet velocity approaching the chamber and improve the chances of successful trapping. The front baffle inside the mouthpiece of the spacer was removed to allow more droplets to pass through. Average droplets from the nebulizer had a diameter of $\leq 1 \mu\text{m}$. Once a droplet was trapped it was allowed to collide with additional droplets, until multiple collisions had occurred and the trapped droplet diameter was 4–5 μm across. The trapping chamber was a $1 \times 2 \times 10 \text{ cm}$ aluminium cuboid with borosilicate glass coverslips above and below to admit laser light and similar windows on the sides to allow direct imaging of trapped droplets. Aerosol droplets were pulled through the system by a vacuum pump attached to the chamber outlet. The vacuum pump's pull from the chamber was limited to $100 \text{ cm}^3 \text{ min}^{-1}$ using a needle valve, as higher flow rates tended to dislodge trapped droplets. An open side line was installed to avoid damaging the pump by restricting air flow. The pump exhaust was connected to the lab extraction vent.

Dry nitrogen gas, from the boil-off from a liquid nitrogen tank, was fed to the chamber at $100 \text{ cm}^3 \text{ min}^{-1}$ *via* a mass flow meter (Bronkhorst MV-301) to lower RH. To raise RH, the nitrogen feed was run from the mass flow meter through a water bubbler. Once the desired low RH was reached, the line from the mass flow controller was detached intermittently while the RH was monitored throughout each FLIM measurement. RH was monitored within the chamber with a Sensirion SHT75 temperature-RH probe (manufacturer stated RH uncertainty = $\pm 1.8\%$ over the range from 10% to 90%²⁵).

2.4 Flim & droplet imaging setup

The optical trap was a counter-propagating dual beam setup similar to the apparatus described by ref. 19 and 26, using a 1064 nm Nd:YAG CW laser (Ventus 1064, Laser Quantum) split across a beam splitter and carried to their respective objectives by optical fibres. The top objective was a $\times 50$ N.A. 0.42 NIR Mplan Apo by Mitutoyo, and the bottom objective was a $\times 60$ N.A. 1.2 Nikon Aplan Apo installed in a Nikon Eclipse Ti inverted scanning confocal microscope. Laser output from the top objective was 11.4 mW and 11.7 mW from the bottom objective. The bottom objective is a water immersion objective and requires a water drop external to the lower coverslip of the chamber. The optical trap was positioned 40 μm above the cover slip with a separation of 10 μm between the focal planes.

Excitation of the GFP was achieved using a SuperK Compact Supercontinuum white light laser set to 488 nm with a measured beam output of 0.744 mW. The supercontinuum is separated into the desired wavelength using an AOTF: a narrow band of the correct wavelength is selected to excite fluorescence. This is focussed to a diffraction limited spot using the same lower objective that is used for trapping. The spot is raster scanned across the field of view and the droplet. The beam waist is approximately 500 nm, contrasted with a droplet size of 4–5 μm . Droplet illumination is point by point and the fluorescence collection is *via* confocal microscopy.

2.5 Data processing

Fluorescence lifetime readings were collected using SPCM application software (Becker and Hickl), and results were processed in Tri2 (version 2.8). Each fluorescence measurement was binned by a factor of 8 (17×17 pixels) in order to reach a threshold of at least 100 counts per pixel, enough to generate a Gaussian distribution, following Suhling *et al.* 2002.⁵ A bi-exponential Marquardt fit was applied since this gave the best fit to the data and matched the fits produced by Suhling *et al.* in 2001.³ A χ^2 range of 0.8–1.2 was selected to exclude poor distributions and improve the shape of the resulting lifetime readings. Sample readings from SPCM and Tri2 are shown in Fig. 1.

Histograms of the fluorescence lifetime were analysed to obtain the full-width half-maximum (FWHM) of each measurement of a droplet at a fixed RH for a period of ~ 60 seconds. The mid-point of the FWHM region was taken to be the average lifetime value, while the upper and lower bounds of the FWHM define the error bars on the y-axis. The error in n was calculated by defining upper and lower bounds of each RH reading using the known uncertainty in the RH measurements. The error in the relative permittivity was calculated using standard error propagation methodology.

A graticule (Pyser-SGI S16 stage micrometer with 1 mm/100 \times 0.01 mm divisions) was imaged in brightfield to allow for the droplet size to be measured and calibrated. Images were processed with the ImageJ processing software (v1.51n).

3. Results

3.1 Dependence of inverse fluorescence lifetime on refractive index

The average fluorescence lifetime of droplets composed of sucrose/water/GFP were measured. In total three droplets were measured with each droplet analysed under multiple RH conditions, thereby resulting in 19 measurements in the RH range 17–90% and MFS range of 0.58–0.97. The relationship between inverse fluorescence lifetime and relative permittivity is found to be near linear, in the range of relative permittivity of 2.05–2.33, as shown previously by Suhling *et al.*,³ see Fig. 2.

In the region of overlap of relative permittivities, measured both by this study and by Suhling *et al.*, there is good agreement and all measurements agree within error. This study has extended the measurements of relative permittivity beyond 2.14 and up to 2.35 thereby increasing the measurement region beyond an n of 1.50, the highest n so far recorded within cells.¹⁴

While the Strickler & Berg formula⁸ predicts a linear relationship between inverse fluorescence lifetime and relative permittivity, at the highest measured relative permittivities there appears to be a deviation from linearity. Aerosolised sucrose becomes highly viscous at low RH and reaches a glass transition point to a glassy state at $< 24\%$ RH.⁴ In cognate experiments with similar sized sucrose/water droplets, this transition, according to Tong *et al.*'s measurements, takes at least 20 minutes to occur.



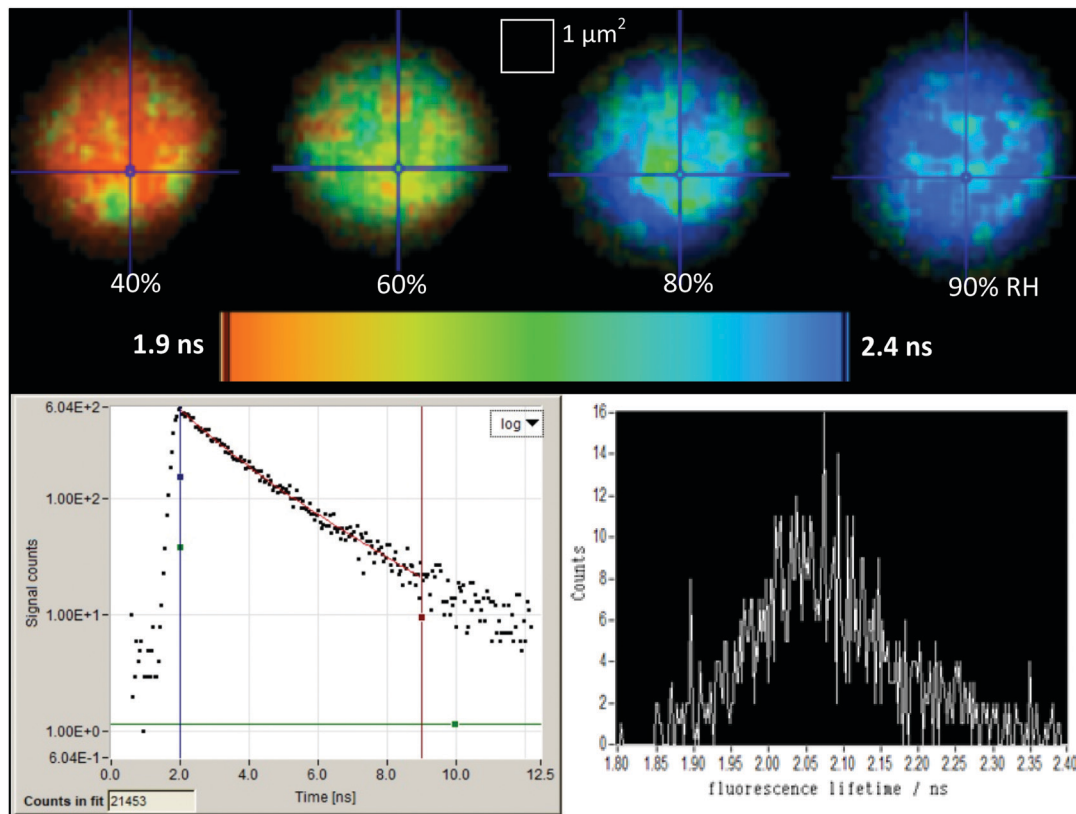


Fig. 1 Top: Example fluorescence lifetime images of the same droplet of GFP in sucrose/water at 40, 60, 80 & 90% RH collected by SPCimage. Bottom left: Log time-resolved fluorescence decay of the 40% RH droplet in Tri2. Bottom right: Lifetime histogram of the same droplet, with lifetime on the x-axis and number of counts on the y-axis.

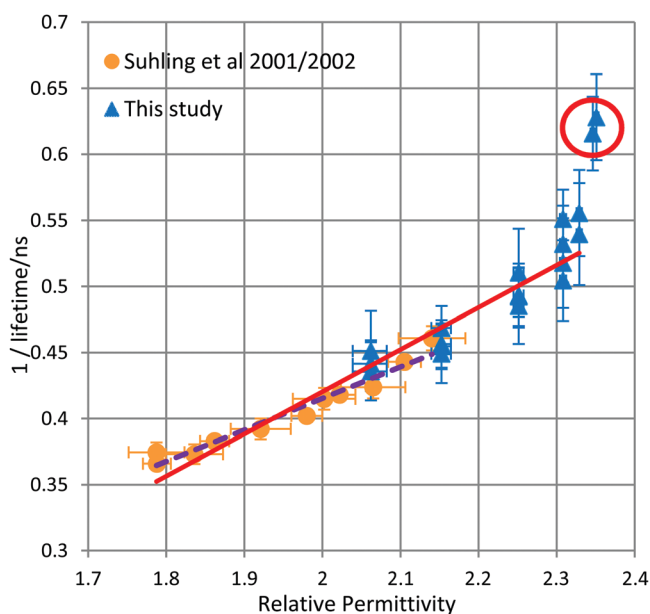


Fig. 2 Inverse fluorescence lifetime of GFP versus relative permittivity of droplets composed of sucrose/water/GFP. Data from this study are compared alongside the results from Suhling *et al.* Readings collected at RH below the glass transition point identified by Tong *et al.* are highlighted in the red circle and are excluded from the calculation of the trendline. The red solid trendline follows both the data from this study and from the studies of Suhling *et al.* The purple dashed trendline follows the Suhling data alone.

Due to the instability of particles in the optical trap at low RH (thus high relative permittivity), readings were collected at $\leq 20\%$ RH (corresponding to $n^2 > 2.34$) as soon as the humidity reading had stabilised but while the particle was still undergoing transition. If these thermodynamically unstable readings are excluded, the remaining readings (including those collected by Suhling *et al.*) correlate linearly in agreement with the Strickler & Berg formula as stated in eqn (4). It is noted that the Strickler & Berg formula is an empirical relationship and more advanced theoretical treatments are available, *e.g.*^{27,28} However, for the data in this paper, Strickler & Berg was found to be sufficient.

$$\frac{1}{\tau} = 0.32n^2 - 0.22. \quad (4)$$

where τ = fluorescence lifetime and n = refractive index. According to the calculations of Shiraiwa *et al.*²⁹ the droplet water content of the sucrose/GFP/water droplets measured at RH greater than or equal to 60% will be in equilibrium with the surrounding atmospheric environment. At lower RH, the droplets will likely not be at full equilibrium and this may explain the wider spread of values seen in Fig. 2 at relative permittivities greater than 2.2. Where data overlaps between this study and the Suhling data, there is agreement within stated error bars. However, the gradient and the intercept achieved from the linear fitting are distinct. The gradient and



intercept for the Suhling data is 0.2386 and -0.0619 , respectively. The difference in the intercept value is unsurprising due to the long extrapolation to the origin required. Measurements were not possible to the lower values of relative permittivity probed by Suhling *et al.*, because of weak fluorescence leading to low counts in droplets compared to bulk solution.

Some heterogeneity is visible in the range of fluorescence lifetime values recorded in the GFP/sucrose droplets shown in Fig. 1 (top images), although the resulting histograms illustrate that the influence over the average lifetime measurement is small. The recorded histograms show a normal distribution of lifetimes with no strong second peaks that would indicate heterogeneous regions within the droplet.

3.2 Hygroscopicity and the refractive index of GFP

The results shown in Section 3.1, along with the work of Suhling *et al.*, establish the relationship between n and GFP fluorescence lifetime. We now show results from binary GFP/water droplets. The n of GFP/water droplets are calculated by converting the fluorescence lifetime of the droplet to refractive index using eqn (4).

In total five GFP/water droplets were measured with each droplet being measured at multiple RH conditions, thereby resulting in 13 measurements in the RH range 11–91%. Fig. 3a shows the

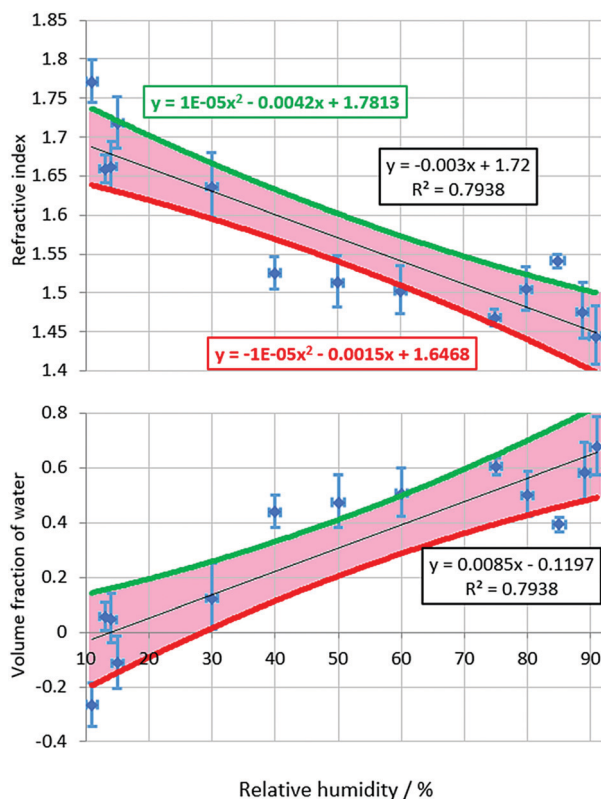


Fig. 3 Upper panel – Measured refractive index of GFP as a function of RH. Lower panel – Derived volume fraction of water in aqueous GFP droplets as a function of RH. The green and red lines define the upper and lower 95% confidence intervals. Equations for the regression line and upper and lower confidence intervals match the colour of the corresponding line.

measured n of the GFP/water droplets *versus* RH. It is unknown whether there are any kinetic limitations for water loss with GFP/water particles under low RH conditions, as there are for sucrose/water particles, but our readings do not indicate such a limit.

The n of the GFP/water droplets rise with falling RH because the loss of the water solvent, which has a lower n index than GFP, causes the droplet to become more concentrated with regard to the solute. The n of pure GFP can thus be estimated by plotting the curve of n *versus* RH and measuring the n value where RH = 0. This value is likely to be an upper limit estimate since GFP (a 27 000 Dalton protein) is anticipated to retain some associated water even under dry conditions.

The relationship of the n of GFP/water droplets appears to be approximately linear with respect to RH over the RH range investigated, with the data set having an R^2 value of 0.79.

Assuming a linear relationship between n and RH, and using a short extrapolation to an RH of 0%, *i.e.*, completely dry air; GFP in isolation is estimated to have an n of 1.72 ± 0.07 . The error bars are defined by the upper and lower bounds of the confidence interval limits. It is noted, the error bars of 11 of the 13 readings overlap the 95% confidence interval of the linear fitting.

GFP droplets might be expected to follow a hygroscopic growth curve in which the uptake of water becomes more significant at higher RH, *i.e.*, the relationship between n and RH would not be linear. This type of hygroscopic behaviour is observed for simple inorganic and organic aerosol systems, for example: Pope *et al.*³⁰ but the GFP relationship appears approximately linear within the specified errors.

To estimate the water content of GFP particles at different RH, a simple mixing rule was employed using the volume fractions of water and GFP in the droplets, see eqn (4). Where V_{GFP} = volume fraction of GFP at a given RH, n_{GFP} = refractive index of GFP, $V_{\text{H}_2\text{O}}$ = volume fraction of water at a given RH, $n_{\text{H}_2\text{O}}$ = refractive index of water and n_{mix} = refractive index of droplet at a given RH. Mole fraction is more often employed in mixing rules, but given the large difference in molecular weights between GFP and water ($\sim 27\,000$ *versus* 18 Daltons) volume fraction was deemed to be more representative.

$$n_{\text{mix}} = V_{\text{GFP}} \cdot n_{\text{GFP}} + V_{\text{H}_2\text{O}} \cdot n_{\text{H}_2\text{O}} \quad (5)$$

Since $V_{\text{GFP}} + V_{\text{H}_2\text{O}} = 1$, $V_{\text{H}_2\text{O}}$ can be expressed as $1 - V_{\text{GFP}}$ and eqn (5) can be rearranged into eqn (6):

$$V_{\text{GFP}} = \frac{n_{\text{mix}} - n_{\text{H}_2\text{O}}}{(n_{\text{GFP}} - n_{\text{H}_2\text{O}})} \quad (6)$$

This equation allows V_{GFP} and thus $V_{\text{H}_2\text{O}}$ to be calculated from known $n_{\text{H}_2\text{O}}$, n_{mix} values taken from eqn (1) (using MFS values calculated from the directly measured RH of droplets), and n_{GFP} obtained from the formula of the trendline in Fig. 3a. Fig. 3b gives the estimated water content of GFP as a function of RH. The equation of the line in Fig. 3b shows that from the data $V_{\text{H}_2\text{O}}$ should be close to ze at 0% RH, as was determined experimentally.



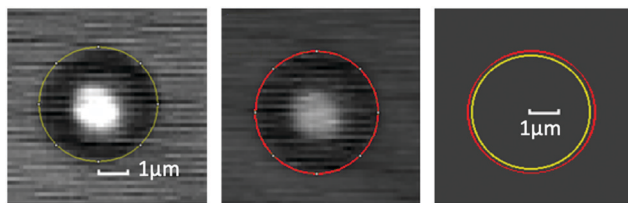


Fig. 4 imageJ measurements of the areas of a droplet of GFP at 17% (left) and 77% RH (centre). The droplet areas were defined manually by the “elliptical brush” tool followed by software pixel counting. The areas of the droplet at the 2 RHs are contrasted in the rightmost image.

It is noted, that two of the 13 readings collected for Fig. 3 generated average lifetime values that imply that the V_{H_2O} in the droplets is less than zero, which is physically impossible. However, these negative values provide an indication of the level of scatter in the fluorescence lifetime values collected by this technique, which is reflected in the size of the 95% confidence interval shown in the figure.

3.3 Droplet volume changes at different RH

Fig. 3b indicates that GFP/water droplets increase in volume when the RH is increased from low to high. This result is further verified by direct brightfield observations of a droplet at low and high RH, as illustrated in Fig. 4, in which the environmental RH surrounding the trapped droplet is increased from 17 to 77% RH. The change in droplet volume, predicted by eqn (6), using the calculated confidence limit is $27 \pm 21\%$, and is measured to be approximately 14% based on area analysis of the 2D images in Fig. 4 using ImageJ software.³¹ Hence, within associated errors the change in volume is found to be within similar ranges regardless of measurement technique.

Conclusions

This paper reports on a series of experiments that investigate optically levitated droplets which are part composed of GFP. Droplets contained either GFP mixed with sucrose solution or GFP in deionised water. The results demonstrate that viable fluorescence lifetime measurements can be collected from optically levitated droplets containing GFP at concentrations above $\sim 35 \mu\text{M}$.

The refractive indices for the droplets can be reliably calculated based on mass fraction of solute, which in turn can be calculated from the RH measured *in situ*. The combination of optical trap and fluorescence lifetime imaging allows droplets to be examined at a higher mass fraction of solute than is feasible in a bulk solution. Therefore, the fluorescence lifetime of GFP could be collected at high refractive indices using GFP in sucrose/water solutions.

Applying the trendline from the plot of relative permittivity vs. the inverse of the measured fluorescence lifetime allowed refractive index values to be obtained directly and thus predicted for GFP in aqueous aerosol droplets down to around 10% RH. Bulk liquid fluorimeter observations by Suhling *et al.* have monitored the RI of GFP at a mass fraction of up to 0.9,

while this technique allowed readings to be collected at a GFP mass fraction of ~ 0.985 . Plotting the resulting refractive index values in a humidogram allowed the refractive index of pure GFP to be estimated at around 1.72 ± 0.07 . This value is similar to values for n observed³² and predicted³³ in the literature.

The hygroscopic properties of GFP were observed by measuring brightfield microscope images of aqueous GFP droplets at low and high RH, and verified by comparing the changes in droplet area with those predicted by a volume-based mixing rule. These results show that GFP has the potential to be employed as a probe compound for aerosol droplets. The FLIM/optical trap setup demonstrates that GFP aerosol solution concentrations can be modified *in situ* to a high degree of accuracy. The refractive index of pure GFP should be an asset to future researchers examining GFP's optical properties. For example, it could be exploited for situations using high RI media like Mowiol[®], or GFP localised in non-cytoplasm parts of the cell, which have higher n .³⁴

The experiments reported in this paper highlight a new methodology for measuring droplet properties, in particular refractive index and hygroscopicity. Further iterations on the experimental setup should focus on droplet stability and fluorescence collection to increase the measured fluorescence intensity. These modifications will allow the approach to measure a greater number of droplets over a wider range of solute concentrations with a greater spatial resolution, for example, future experiments could investigate potential edge effects upon droplet refractive index as suggested by Jones and Suhling (2006),³⁵ and characterise other dynamically heterogeneous systems of interest. Longer term or higher concentration studies with greater fluorescence intensity will allow for more precise measurements, which will reduce the spread in the data, and hence allow further physico-chemical insights and testing of theories such as more advanced mixing rules than attempted in this paper, such as the Lorentz–Lorenz fitting model proposed by Cai *et al.*²⁹

Conflicts of interest

There are no conflicts to declare.

Acknowledgements

ND thanks the National Environmental Research Council for his studentship. Funding for the work was from the Science and Technology Facilities Council (STFC), Central Laser Facility, Programme Access Grant (LSF1207).

Notes and references

- 1 R. Y. Tsien, The Green Fluorescent Protein, *Annu. Rev. Biochem.*, 1998, **67**, 509–544.
- 2 M. Chalfie, Y. Tu, G. Euskirchen, W. W. Ward and D. C. Prasher, Green fluorescent protein as a marker for gene expression, *Science*, 1994, **263**(5148), 802–805.



- 3 K. Suhling, D. M. Davis, Z. Petrasek, J. Siegel and D. Phillips, *Influence of the refractive index on EGFP fluorescence lifetimes in mixtures of water and glycerol*, SPIE Proceedings, Biomarkers and Biological Spectral Imaging, San Jose, CA, 2001, vol. 4259.
- 4 L. H. Garcia-Rubio, *Refractive Index Effects on the Absorption Spectra of Macromolecules*, *Macromolecules*, 1992, **25**, 2608–2613.
- 5 K. Suhling, J. Siegel, D. Phillips, P. M. W. French, S. L ev eque-Fort and S. E. D. Webb, *et al.*, *Imaging the Environment of Green Fluorescent Protein*, *Biophys. J.*, 2002, **83**(6), 3589–3595.
- 6 K. Suhling, D. M. Davis and D. Phillips, *The Influence of Solvent Viscosity on the Fluorescence Decay and Time-Resolved Anisotropy of Green Fluorescent Protein*, *J. Fluoresc.*, 2002, **12**(1), 91–95.
- 7 C. Tregidgo, J. A. Levitt and K. Suhling, *Effect of refractive index on the fluorescence lifetime of green fluorescent protein*, *J. Biomed. Opt.*, 2008, **13**(3), 031218.
- 8 S. J. Strickler and R. A. Berg, *relationship between absorption intensity and fluorescence lifetime of molecules*, *J. Chem. Phys.*, 1962, **37**(4), 814–820.
- 9 D. Toptygin, *Effects of the Solvent Refractive Index and Its Dispersion on the Radiative Decay Rate and Extinction Coefficient of a Fluorescent Solute*, *J. Fluoresc.*, 2003, **13**(3), 201–219.
- 10 J. Y. Lee, C. Y. Kao, Y. J. Chen, T. Y. Wu and I. J. Hsu, *Optical properties of green fluorescent proteins and their applications on virus infection*, SPIE, Molecular Imaging, Munich, Germany, 2007.
- 11 H. J. Van Manen, P. Verkuijlen, P. Wittendorp, V. Subramaniam, T. K. van den Berg and D. Roos, *et al.*, *Refractive index sensing of green fluorescent proteins in living cells using fluorescence lifetime imaging microscopy*, *Biophys. J.*, 2008, **94**(8), L67–L69.
- 12 J. Zou, Y. Ye, K. Welshhans, M. Lurtz, A. L. Ellis and C. Louis, *et al.*, *Expression and optical properties of green fluorescent protein expressed in different cellular environments*, *J. Biotechnol.*, 2005, **119**(4), 368–378.
- 13 J. W. Borst, M. A. Hink, A. van Hoek and A. J. Visser, *Effects of refractive index and viscosity on fluorescence and anisotropy decays of enhanced cyan and yellow fluorescent proteins*, *J. Fluoresc.*, 2005, **15**(2), 153–160.
- 14 N. A. Hosny, C. Fitzgerald, C. Tong, M. Kalberer, M. K. Kuimova and F. D. Pope, *Fluorescent Lifetime Imaging of Atmospheric Aerosols: A Direct Probe of Aerosol Viscosity*, *Faraday Discuss.*, 2013, **165**, 343–356.
- 15 Q. Zhang, L. Zhong, P. Tang, Y. Yuan, S. Liu and J. Tian, *et al.*, *Quantitative refractive index distribution of single cell by combining phase-shifting interferometry and AFM imaging*, *Nature*, 2017, **7**, 2532.
- 16 M. A. Uskova, J. Borst, M. A. Hink, A. van Hoek, A. Schots, A. L. Klyachko and A. J. W. G. Visser, *Fluorescence dynamics of green fluorescent protein in AOT reversed micelles*, *Biophys. Chem.*, 2000, **87**, 73–84.
- 17 A. Pliss, L. L. Zhao, T. Y. Ohulchanskyy, J. L. Qu and P. N. Prasad, *Fluorescence lifetime of fluorescent proteins as an intracellular environment probe sensing the cell cycle progression*, *ACS Chem. Biol.*, 2012, **7**, 1385–1392.
- 18 T. Athanasiadis, C. Fitzgerald, N. M. Davidson, C. Glorio, S. W. Botchway and A. D. Ward, *et al.*, *Dynamic viscosity mapping of the oxidation of squalene aerosol particles*, *Phys. Chem. Chem. Phys.*, 2016, **18**(44), 30385–30393.
- 19 L. Rkiouak, M. J. Tang, J. C. J. Camp, J. McGregor, J. M. Watson and R. A. Cox, *et al.*, *Optical Trapping and Raman Spectroscopy of Solid Particles*, *Phys. Chem. Chem. Phys.*, 2014, 11426–11434.
- 20 H.-J. Tong, J. P. Reid, D. L. Bones, B. P. Luo and U. K. Krieger, *Measurements of the timescales for the mass transfer of water in glassy aerosol at low relative humidity and ambient temperature*, *Atmos. Chem. Phys.*, 2011, **11**, 4739–4754.
- 21 L. Joosen, M. A. Hink, T. W. J. Gadella and J. Goedhart, *Effect of fixation procedures on the fluorescence lifetimes of Aequorea victoria derived fluorescent proteins*, *J. Microsc.*, 2014, **256**, 166–176.
- 22 IPCC. *Climate Change 2007: The Physical Science Basis. Contribution of Working Group I to the Fourth Assessment Report of the Intergovernmental Panel on Climate Change*. Cambridge, UK & New York, USA; 2007.
- 23 Y. J. Ma, P. Rajendran, C. Blum, Y. Cesa, N. Gartmann, D. Bruhwiler and V. Subramaniam, *Microspectroscopic analysis of green fluorescent proteins infiltrated into mesoporous silica nanochannels*, *J. Colloid Interface Sci.*, 2011, **356**, 123–130.
- 24 B. Zobrist, V. Soonsin, B. P. Luo, U. K. Krieger, C. Marcolli and T. Peter, *et al.*, *Ultra-slow water diffusion in aqueous sucrose glasses*, *Phys. Chem. Chem. Phys.*, 2011, **13**, 3514–3526.
- 25 A. G. Sensirion Digital Humidity Sensor SHT7x (RH/T). [Online].; 2017 cited 2017 08 09. Available from: <https://www.sensirion.com/en/environmental-sensors/humidity-sensors/pintype-digital-humidity-sensors/>.
- 26 C. Fitzgerald, N. A. Hosny, H.-J. Tong, P. C. Seville, P. J. Gallimore and N. M. Davidson, *et al.*, *Fluorescence lifetime imaging of optically levitated aerosol: A technique to quantitatively map the viscosity of suspended aerosol particles*, *Phys. Chem. Chem. Phys.*, 2016, **18**(31), 21710–21719.
- 27 P.-H. Chung, C. Tregidgo and K. Suhling, *Determining a fluorophore's transition dipole moment from fluorescence lifetime measurements in solvents of varying refractive index*, *Methods Appl. Fluoresc.*, 2016, **4**, 045001.
- 28 C. Cai, R. E. H. Miles, M. I. Cotterell, A. Marsh, G. Rovelli, A. M. J. Rickards, Y.-h. Zhang and J. P. Reid, *Comparison of Methods for Predicting the Compositional Dependence of the Density and Refractive Index of Organic-Aqueous Aerosols*, *J. Phys. Chem. A*, 2016, **120**(33), 6604–6617.
- 29 M. Shiraiwa, M. Ammann, T. Koop and U. P oschl, *Gas uptake and chemical aging of semisolid organic aerosol particles*, *Proc. Natl. Acad. Sci. U. S. A.*, 2011, **108**(27), 11003–11008.
- 30 F. D. Pope, B. J. Dennis-Smith, P. T. Griffiths, S. L. Clegg and R. A. Cox, *Studies of single aerosol particles containing malonic acid, glutaric acid, and their mixtures with sodium chloride. I. Hygroscopic growth. The*, *J. Phys. Chem. A*, 2010, **114**(16), 5335–5341.



- 31 ImageJ Particle Analysis [Online].; 2017 [cited 2019 10 27]. Available from: https://imagej.net/Particle_Analysis.
- 32 T. L. McMeekin, M. Wilensky and M. L. Groves, Refractive indices of proteins in relation to amino acid composition and specific volume, *Biochem. Biophys. Res. Commun.*, 1962, 7, 151–156.
- 33 H. Zhao, P. H. Brown and P. Schuck, On the distribution of protein refractive index increments, *Biophys. J.*, 2011, 100, 2309–2317.
- 34 R. H. Valdivia, A. E. Hromockyi, D. Monack, L. Ramakrishnan and S. Falkow, Applications for green fluorescent protein (GFP) in the study of host-pathogen interactions, *Gene*, 1996, 173(1), 47–52.
- 35 C. Jones and K. Suhling, Refractive index sensing using Fluorescence Lifetime Imaging (FLIM). Proceedings of the Second International Conference on Optical and Laser Diagnostics, *J. Phys.: Conf. Ser.*, 2006, 45(1), 223.

